

Neue Entomologische Nachrichten 23:3-53 (Juni 2002), Marktleuthen

Types of Balkan butterflies in the collection of The Natural History Museum, London

(Lepidoptera: Hesperioidea & Papilionoidea)

by

STANISLAV P. ABADJIEV

Summary: A revision of the butterfly collection of The Natural History Museum, London, showed that it contains the type material of 70 nominal species group taxa of Balkan Hesperioidea and Papilionoidea. The collection contains type material of taxa described by 25 authors and comprises 1 taxon of Hesperioidea, 17 of Papilionoidea, 4 of Pieridae, 12 of Lycaenidae and 36 of Nymphalidae. For 4 taxa (*Polyommatus (Cyaniris) semiargus balcanica* TUTT, [1909]), *Erebia medusa euphrasia* FRUHSTORFER, 1917, *E. medusa narona* FRUHSTORFER, 1917, *E. rhodopensis* NICHOLL, 1900) the exact type localities have been fixed. For the stability of nomenclature lectotypes have been designated for *Erebia medusa euphrasia* FRUHSTORFER, 1917, *E. medusa narona* FRUHSTORFER, 1917, *E. alberganus phorcys* (FREYER, [1836]), *E. rhodopensis* NICHOLL, 1900 and *E. ottomana durmitorensis* WARREN, 1932. The following new synonyms have been established: *Parnassius mnemosyne caucasia* VERITY, [1911] = *P. mnemosyne deiotarus* FRUHSTORFER, 1917, syn. nov., *P. mnemosyne caucasia* VERITY, [1911] = *P. mnemosyne bulgarica* EISNER, 1936, syn. nov., *P. apollo graecus* ZIEGLER, 1901 = *P. apollo omotimoius* FRUHSTORFER, 1921, syn. nov., *P. apollo graecus* ZIEGLER, 1901 = *P. apollo yglanus* FRUHSTORFER, 1921, syn. nov., *P. apollo graecus* ZIEGLER, 1901 = *P. apollo hermiston* FRUHSTORFER, 1921, syn. nov., *P. apollo graecus* ZIEGLER, 1901 = *P. apollo olympiacus* KOLAR & REBEL, 1934, syn. nov., *P. apollo graecus* ZIEGLER, 1901 = *P. apollo thessalicus* BANG-HAAS, 1934, syn. nov., *P. apollo ottonius* FRUHSTORFER, 1909 = *P. apollo leimdoerfferi* BRYK, 1935, syn. nov., *Satyrus aegeria tircis* GODART, 1821 = *Pararge aegeria egestas* FRUHSTORFER, 1908, syn. nov., *Erebia medusa euphrasia* FRUHSTORFER, 1917 = *E. medusa narona* FRUHSTORFER, 1917, syn. nov.

Abbreviations

BMNH	The Natural History Museum, London
ITZA	Instituut voor Taxonomische Zoölogie, Universiteit van Amsterdam
MHNP	Muséum National d'Histoire Naturelle, Paris
MZSF	Museo Zoologico de la Specola, Firenze
NHMW	Naturhistorisches Museum, Wien
NMNH	National Museum of Natural History, Sofia
ZMHB	Museum für Naturkunde der Humboldt-Universität zu Berlin

Acknowledgments

First of all, I must acknowledge, with grateful thanks, the Improving Human Potential (IHP) Programme of the European Union for providing the necessary funding for this project thus enabling it to be undertaken.

I would like to thank Miss LYANNE HOUSEAGO, Research and Consulting Office, The Natural History Museum, London for the invaluable help on administrative matters.

I am very grateful to my colleagues in the Department of Entomology, The Natural History Museum, London. Mr PHILLIP ACKERY was really the perfect scientific host. Despite his administrative and scientific pressure of work he was wonderfully efficient in many difficult cases, even if the work necessitated "floor climbing" (sometimes using a lift) to find a certain specimen or "body-building" in carrying heavy books. His good humor was unforgettable and infectious. Mr JIM REYNOLDS guided me on general matters and on queries over several species. Mr CAMPBELL SMITH kindly helped me to locate



Fig. 1: The Natural History Museum (BMNH), London (Department of Entomology Block on the left).
Photo S. ABADJIEV, 9 December 2001.

certain specimens of HIGGINS' collection. Mrs KIM GOODGER was really very kind to forward all the messages designed for me.

I thank the staff of the Entomology Library at The Natural History Museum, London and especially Ms JOANNA KAPUSTA, Assistant Librarian, for the help with my enquires. I would like to thank Mr HANS-ULRICH RAAKE, Assistant Librarian, Museum für Naturkunde der Humboldt-Universität zu Berlin, who was so kind to advise me concerning the publication dates of certain journals.

I must record my special gratitude to Dr HARISH GAONKAR, Copenhagen for sharing impressions and for fascinating discussions concerning butterflies, types, nomenclature.

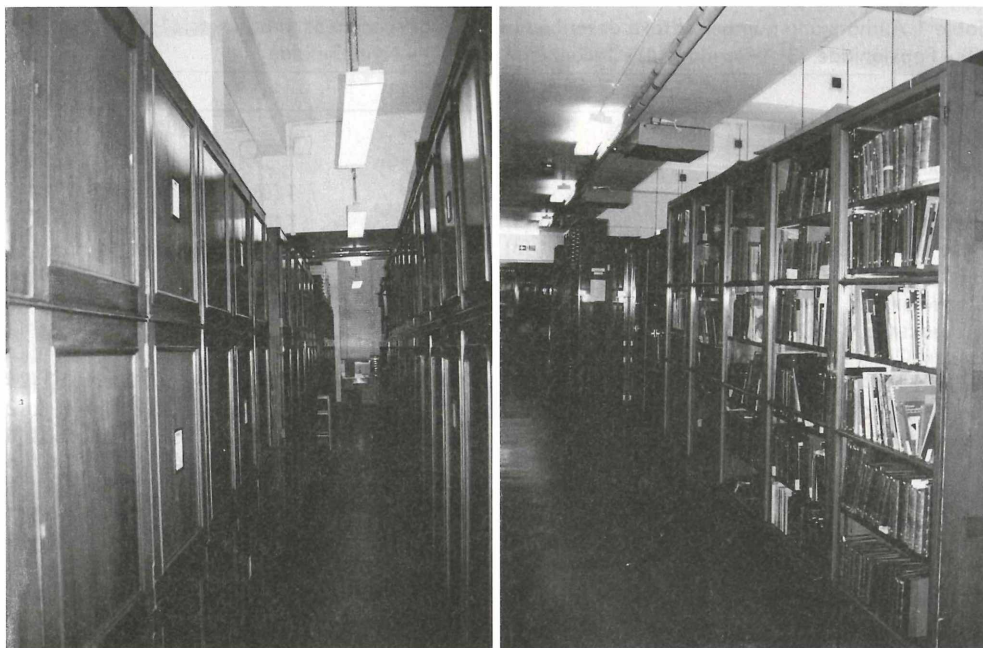
I am very obliged to Dr ULF EITSCHBERGER, Marktleuthen who kindly assisted with literature and for the publication of this lengthy paper.

I thank Dr ZSOLT BÁLINT, Hungarian Natural History Museum, Budapest, for his invaluable help on certain Lycaenid taxa and comments concerning FREYER's types. I thank Dr P. SIGBERT WAGENER, Oberhausen and Mr HARRY VAN OORSCHOT, Amsterdam for their valuable comments on certain taxa. I would like to thank Dr ANDREW WAKEHAM-DAWSON, International Commission on Zoological Nomenclature, London for his valuable comments of nomenclatural matter.

And finally, I am deeply indebted to my wife EKATERINA ABADJIEVA for the linguistic corrections.

Introduction

Taxonomic studies of any group of animals (including Lepidoptera) are very important and serve as a basis for future investigations. Of special importance in any taxonomic study is the good knowledge on the type material of the taxa applied. As far as name-bearing types (holotypes, syntypes) serve as a standard of nominal species group taxa, it is important to know all the data which can help in their subsequent recognition (including labels descriptions), and publishing lists of such types housed at certain institutions is even recommended (ICZN, 1999: 72F.4).



Figs 2 (left) and 3 (right): Cabinets and “butterfly” library at Basement Floor of the Entomology Block.
Photo S. ABADJIEV, 10 December 2001.

The Natural History Museum, London is well known as a depository of the largest and most important collection of type material of World Lepidoptera, including 125 000 types, and more than 40% primary type representation (ACKERY, 1999: 2). The present building (Fig. 1) was fully occupied in 1954 (ACKERY, 1999: 5). Here the butterfly collection occupies several floors and is usually housed in standard 20-drawer cabinets (Main Collection) and units of a 40-drawer cabinet as a base with a 26-drawer cabinet placed above (Rothschild Collection) (Fig. 2), on the Basement Floor alongside the useful “butterfly” library (Fig. 3). At the moment traditional card-indexes down to infra-subspecific level are used to facilitate taxon-level access to the Lepidoptera collection. Species-level/intra-subspecific electronic indexing is underway with end-date of 2003, but specimen-level databasing is never likely to happen as a routine task, even in such a special area as the type material (ACKERY, 1999: 2). Lists of type material housed at the BMNH have been already published for certain groups of butterflies, eg for Heliconiinae (ACKERY & SMILES, 1976), *Parnassius* (ACKERY, 1973), *Polyommatus* (BÁLINT, 1999), forming just a minor part of the museum holdings.

A task of compiling lists of type material of the Balkan butterflies is underway now. Such a list has been already published for the collection of the Institute of Zoology, Sofia (cf ABADJIEV, 2001a). As far as the collection of The Natural History Museum, London, is concerned, type material (partially) for some taxa, described from Bulgaria has been published (illustrated in colour) (cf ABADJIEV, 1993, 1995). In one particular case, due to the instability of nomenclature, it was found necessary to designate a lectotype (ABADJIEV, 2000). In another case part of the type material was previously unknown (not mentioned in the original description), eg *Erebia orientalis* (ABADJIEV, in print). It is necessary to mention that in both cases, stated above, the exact type localities of the taxa have been fixed. For the purpose of the current work the study area has been expanded outside the geographical boundaries of the Balkan Peninsula and includes all the territory of former Yugoslavia and the Greek islands. This publication is a result of my research visit to The Natural History Museum, London during 12.XI.–14.XII.2001. During this period each (examined) specimen was supplied with individual number and electronically indexed.

Table 1: Authors and number of taxa described (number of specimens in brackets; (1) is Hesperioidea, (2) – Papilionoidea, (3) – Pieridae, (4) – Lycaenidae, and (5) – Nymphalidae).

Author	(1)	(2)	(3)	(4)	(5)	Total
BANG-HAAS, O.		1 (3)				1 (3)
BERNARDI, G.			1 (19)			1 (19)
BROWN, J.				1 (8)		1 (8)
BRYK, F.		3 (8)				3 (8)
BRYK, F. & C. EISNER		1 (3)				1 (3)
BURESCH, I.		1 (2)			1 (2)	2 (4)
DAVENPORT, D.					1 (2)	1 (2)
DE LOUKER, S. & J. DILS					1 (1)	1 (1)
EISNER, C.		1 (4)				1 (4)
ELWES, H. J.					2 (24)	2 (24)
FREYER, C. F.					2 (2)	2 (2)
FRIVALDSZKY, I.				1 (1)		1 (1)
FRUHSTORFER, H.		8 (14)	1 (2)	2 (14)	24 (35)	35 (65)
GRAVES, P. P.				1 (28)		1 (28)
HEMMING, A. F.				1 (1)		1 (1)
HIGGINS, L. G.					2 (23)	2 (23)
KOLAR, H. & H. REBEL		1 (1)				1 (1)
NICHOLL, M. DE LA B.					1 (2)	1 (2)
REBEL, H.			1 (1)			1 (1)
ROTHSCHILD, W.		1 (23)				1 (23)
STAUDINGER, O.				1 (2)		1 (2)
TUTT, J. W.				1 (8)		1 (8)
VERITY, R.			1 (1)	3 (6)		4 (7)
WARREN, B.C. S.	1 (4)				2 (12)	3 (16)
ZÜLLICH, R.				1 (7)		1 (7)
Total	1 (4)	17 (58)	4 (23)	12 (75)	36 (103)	70 (263)

A revision of the butterfly collection of The Natural History Museum, London allowed to find type material of 70 nominal species group taxa (263 specimens) of Hesperioidea and Papilionoidea described from the Balkan Peninsula. The collection contains type material of taxa described by 25 authors (see Table 1) and is especially rich in HANS FRUHSTORFER's material (35, a half of the taxa located). It also contains a valuable material of taxa described by FELIX BRYK, HENRY JOHN ELWES, CHRISTIAN FRIEDRICH FREYER, LIONEL GEORGE HIGGINS, ROGER VERITY and BRISBANE CHARLES SOMERVILLE WARREN. As it was already mentioned (VANE-WRIGHT & ACKERY, 1981: 2–3) the evaluation of WARREN's type material with respect to the status of individual specimens is very difficult. Although most series of his own taxa include a labelled "holotype", often an "allotype" and "paratypes", in a majority of cases no indication of a selected holotype is given in the original description and these type series are regarded as syntypic.

The species group taxa names are arranged in systematic order. Each entry includes the species group name, followed by the original combination quoted from the original publication, type locality (containing a quotation from the original publication or subsequent fixation due to lectotype designation), type specimens as specified with their labels and notes about the type material and current taxonomic status. All extensions of abbreviations or remarks used are enclosed in square brackets "[]".

The text of the label is quoted in double quotation marks (to assist better recognition, each label is provided with characteristics of the paper). Each line in the text of the label is separated by a vertical line "|". In quotations of combined labels (handwritten on printed forms) the handwritten text is reproduced in *italics*; completely handwritten and completely printed labels are quoted in a plain character face.

An annotated catalogue

HESPERIOIDEA

HESPERIIDAE

Pyrgus HÜBNER, [1819]*P. serratulae* (RAMBUR, [1839])***balcanica* WARREN, 1926**

"*Hesperia serratulae*, Rambur s-sp. *balcanica*, nov. (? race)" WARREN, B. C. S., 1926 (Monograph of the tribe Hesperiidi... – Trans. ent. Soc. Lond. **74** (XI.1926): 97). Type locality: [Yugoslavia]: "Montenegro in the neighbourhood of Cetinje" (l. c.: 98).

Syntypes 2 ♂♂, 2 ♀♀ with labels:

[1 ♂] (1) printed with handwritten inscriptions [here italicised] (on white paper) "Cetinje, | Montenegro, | 8 June, 1912. | A. E. Gibbs."; (2) printed (on orange paper) "HOLOTYPE."; (3) printed with handwritten inscriptions [here italicized] (on light yellow-gray paper) "Photograph. | Trans. Ent. Soc. | Lond. 1926. | Pl: 29, Fig: 7&9."; (4) printed (on white paper) "BMNH(E) # 662222";

[2 ♂] (1) printed with handwritten inscriptions [here italicized] (on white paper) "Cetinje, | Montenegro, | 6 June, 1912. | A. E. Gibbs."; (2) printed with handwritten inscriptions [here italicized] (on light yellow-gray paper) "Photograph. | Trans. Ent. Soc. | Lond. 1926. | Pl: 29, Fig: 8."; (3) printed with handwritten inscriptions [here italicized] (on green paper) "Dissected. | SLIDE NO: | 57. | B.C.S.Warren."; (4) printed (on white paper) "BMNH(E) # 662223";

[3 ♀] (1) printed with handwritten inscriptions [here italicized] (on white paper) "Cetinje, | Montenegro, | 8 June, 1912. | A. E. Gibbs."; (2) printed (on orange paper) "ALLOTYPE."; (3) printed with handwritten inscriptions [here italicized] (on light yellow-gray paper) "Photograph. | Trans. Ent. Soc. | Lond. 1926. | Pl: 29, Fig: 11."; (4) printed (on white paper) "BMNH(E) # 662224";

[4 ♀] (1) printed with handwritten inscriptions [here italicized] (on white paper) "Cetinje, | Montenegro, | 9 June, 1912. | A. E. Gibbs."; (2) printed with handwritten inscriptions [here italicized] (on light yellow-gray paper) "Photograph. | Trans. Ent. Soc. | Lond. 1926. | Pl: 29, Fig: 10&12."; (3) printed (on white paper) "BMNH(E) # 662225";

Syntypes 2 and 4 with additional printed (on light yellow paper) "PARATYPE."; all the syntypes with additional (1) printed with handwritten inscriptions [here italicized] (on white paper) "*Hesperia serratulae* | *balcanica* Warren | det. R.I.Vane-Wright, 1979. | ♂ [♀ respectively] SYNTYPE.", and (2) printed (on white paper) "B.C.S. Warren | Bequest | B.M. 1979-101"

This taxon was originally described and subsequently treated (DE JONG, 1972: 70–71; HESSELBARTH, VAN OORSCHOT & WAGENER, 1995: 229) as a different subspecies, endemic for the Balkan Peninsula. The originally mentioned type material consisted of 2 ♂♂ and 3 ♀♀ (WARREN, 1926: 98). Syntypes listed by VANE-WRIGHT & ACKERY (1981: 112).

PAPILIONOIDEA

PAPILIONIDAE

Zerynthia OCHSENHEIMER, 1816

Z. cerisy (GODART, [1824])

martini FRUHSTORFER, 1906

"*Thais cerisyi martini* nov. subspec." FRUHSTORFER, H., 1906 (Eine neue *Thais* von Rhodos. – Societas ent. 21 (31.XII.1906): 147). Type locality: [Greece]: "Insel Rhodos" (l. c.: 148).

Syntype ♂ with labels:

- (1) printed (on red paper) "Type"; (2) handwritten (on white paper) "Rhodos | 29.3.05"; (3) handwritten (on white paper with black frame) "cerisy | martini | Fruhst."; (4) printed (on white paper) "Fruhstorfer Coll. | B.M. 1937-285"; (5) printed (on white paper) "BMNH(E) # 662001"; (6) printed with handwritten inscriptions [here italicized] (on red paper), double framed "SYNTYPE ♂ | *Thais cerisy* | *martini* | [line] | Dr S. Abadjiev det. 2001."

The originally mentioned type material consisted of 3 ♂♂ (FRUHSTORFER, 1906: 148). A junior subjective synonym of *Thais cerisy cerisy* GODART, [1824] (KOÇAK, 1981: 50).

Archon HÜBNER, 1822

A. apollinus (HERBST, 1798)

thracica BURESCH, 1915

"*Doritis apollinus* var. *thracica*" BURESCH, I., 1915b (Beitrag zur Lepidopterenfauna von Thrazien und Mazedonien. – Spis. bulg. Akad. Nauk. 12: 39). Type locality: [Turkey]: "[The crest of Kuru Dağı above Keşan]" (l. c.: 39).

Syntypes ♂, ♀ with labels:

- [1 ♂] (1) handwritten (on white paper, double framed) [italicized text in Cyrillic] "*Kuru-Dag* | (*Y. Is. Trak*). Ex larva | 12.V.1913–25.II.914."; (2) printed (on white paper) "BMNH(E) # 662014";
 [2 ♀] printed (on white paper) "BMNH(E) # 662015";
 – Both the syntypes with (1) printed with handwritten inscriptions [here italicized] (on white paper), double framed "*KURU DAGH* | *W. of* | Rodosto. | to P. P. Graves. | from Dr. Buresch | 1913"; (2) printed (on red paper) "Topotype"; (3) printed (on white paper) "Spec. exam. | C. Eisner"; (4) printed with handwritten inscriptions [here italicized] (on red paper), double framed "SYNTYPE ♂ [♀ respectively] | *Doritis apollinus* | *thracica* | [line] | Dr S. Abadjiev det. 2001"

Type material originally not stated; in BURESCH's previous publication (1915a) from about 80 larvae collected (l. c.: 17) 26 ♂♂ and 24 ♀♀ are mentioned as reared successfully (l. c.: 26). Treated as a junior subjective synonym of *Papilio apollinus apollinus* HERBST, 1798 (DE FREINA, 1985: 126).

Parnassius LATREILLE, 1804*P. mnemosyne* (LINNAEUS, 1758)*leonhardiana* FRUHSTORFER, 1917

"*P.[arnassius] mnemosyne leonhardiana* Bryk i. l." FRUHSTORFER, H., 1917a (Neue Rhopaloceren aus der Sammlung Leonhard. – Arch. Naturgesch. **82** (1916) A (2) (l.1917): 25; Taf.: 20 ♂, 21 ♀). Type locality: "Okkupationsländer" [Bosnia and Herzegovina] (l. c.: 25).

Syntypes 3 ♂♂, 1 ♀ with labels:

- [1 ♂] (1) circle printed (on white paper with red frame) "Type"; (2) printed (on red paper) "Type"; (3) handwritten (on white paper with black frame) "mnemosyne | leonhardiana | Frhsr."; (4) printed with handwritten inscriptions [here italicized] (on white paper) "♂ *Holotype* | B.M. TYPE | No.Rh. 18322 | *Parnassius* | *mnemosyne* | *leonhardiana* | *Fruh.*"; (5) printed (on white paper) "BMNH(E) # 662008";
- [2 ♂] (1) printed (on white paper) "Spec. exam. | C. Eisner"; (2) printed (on white paper) "BMNH(E) # 662009";
- [3 ♂] (1) printed (on red paper) "Paratypus"; (2) handwritten (on white paper) "ex c. | Leonhard"; (3) printed (on white paper) "leonhardiana | Fruhst."; (4) printed (on white paper) "Rothschild | Bequest | B. M. 1939-1."; (5) printed (on white paper) "BMNH(E) # 662010";
- [4 ♀] (1) printed (on white paper with black frame) "Erwähnt. Bryk"; (2) printed (on pink paper with black frame) "Cotypus"; (3) printed (on white paper) "R.E.Ellison coll. | B.M. 1960-550"; (4) printed (on white paper) "BMNH(E) # 662011";
– Syntypes 1 and 2 with (1) printed with handwritten inscriptions [here italicized] (on white paper with black frame) "Wettl | Trebevic | 17.6.08"; (2) circle printed (on white paper with blue frame) "SYN- | TYPE"; (3) printed (on white paper) "Fruhstorfer Coll. | B. M. 1937-285."; 3 and 4 with printed (on white paper) "Bosnia 1902 | Maklen Pass | O. Leonhard"

Type material originally not stated. Not listed by ACKERY (1973). Treated as a different subspecies (BRYK, 1935: 84).

deiotarus FRUHSTORFER, 1917

[*Parnassius mnemosyne* L.] "*deiotarus* subsp. nova" FRUHSTORFER, H., 1917a (Neue Rhopaloceren aus der Sammlung Leonhard. – Arch. Naturgesch. **82** (1916) A (2) (l.1917): 26; Taf.: 16 ♂, 17 ♀). Type locality: [Bulgaria]: "Tschamkorija [= Borovets]" (l. c.: 26).

Syntypes 2 ♂♂, 1 ♀ with labels:

- [1 ♂] (1) handwritten (on white paper), framed "deiotarus | Fruhst"; (2) printed with handwritten inscriptions [here italicized] (on white paper) "♂ *Holotype* | B.M. TYPE | No.Rh. 18323 | *Parnassius* | *mnemosyne* | *deiotarus* | *Fruh.*"; (3) printed (on white paper) "Illustrated in | Abadjiev, S. 1993 | Butterflies of Bulgaria | Part 2: Pl. 16: Figs 4–6"; (4) printed (on white paper) "BMNH(E) # 662002";
- [2 ♂] (1) printed (on white paper) "mn. deiotarus"; (2) printed (on white paper), framed "Coll. Eisner | Berlin"; (3) printed (on white paper) "Rothschild | Bequest | B. M. 1939-1"; (4) printed (on white paper) "Spec. exam. | C.Eisner"; (5) printed (on white paper) "BMNH(E) # 662003";
- [3 ♀] (1) printed with handwritten inscriptions [here italicized] (on white paper) "*Bulg.* | Fruhstorfer | [line]"; (2) circle printed (on white paper with red frame) "Type"; (3) printed with handwritten inscriptions [here italicized] (on white paper) "♀ *Allotype* | B.M. TYPE | No.Rh. 18324 | *Parnassius* | *mnemosyne* | *deiotarus* | *Fruh.*"; (4) printed (on red paper) "Type"; (5) printed (on white paper) "BMNH(E) # 662004";
– Syntypes 1 and 2 with (1) printed (on white paper) "Bulg Tschamkorija | M. Hilf 1911 | Coll. O. Leonhard"; (2) printed (on red paper) "TYPE"; (3) circle printed (on white paper with blue frame) "Syn- | type"; (4) printed (on white paper) "SYNTYPE | *Parnassius mnemosyne* |

deiotarus | Fruhstorfer. | det. P. Ackery, 1991."; 1 and 3 with printed (on white paper) "Fruhstorfer Coll. | B. M. 1937-285"; all with circle printed (on white paper with blue frame) "SYN- | TYPE"

Type material originally not stated. The first 2 syntypes were mentioned by ACKERY (1973: 12) and ABADJIEV (1992: 25); the first illustrated in colour by ABADJIEV (1993: 126; Pl. XVI: Figs 4–6). A junior subjective synonym of *Parnassius mnemosyne caucasia* VERITY, [1911] (Rhopalocera Palaearctica...: 320 (I.1911); Pl. LXXII (X.1911): Fig. 33), **syn. nov.** The names "*deiotaurus*" BRYK (1921: 113, 115), repeated by ACKERY (1973: 12) and "*deioratus*" KUDRNA (1985: 22, 48) are incorrect subsequent spellings, unavailable names.

bosniacus ROTHSCHILD, 1918

"*Parnassius mnemosyne bosniacus* subsp. nov." ROTHSCHILD, W., 1918 (Catalogue of the Parnassiinae in the Tring Museum. Novit. zool. 25: 223). Type locality: [Bosnia and Herzegovina]: "Mahnjaca Mountains, Bosnia, 1,200 metres = 3,900 ft." (l. c.: 223).

Syntypes 16 ♂♂, 7 ♀♀ with labels:

- [1 ♂] (1) circle printed (on white paper with red frame) "Type"; (2) handwritten (on white paper) "*Parnassius | mnemosyne | bosniacus | Type Rothschild*"; (3) printed with handwritten inscriptions [here italicized] (on white paper) "*♂ Holotype | B.M. TYPE | No.Rh. 18456 | Parnassius | mnemosyne | bosniacus | Rothschild*"; (4) printed (on white paper) "BMNH(E) # 662012";
- [2 ♂] (1) printed with handwritten inscriptions [here italicized] (on white paper) "*♂ Paratype | B.M. TYPE | No.Rh. 18457 | Parnassius | mnemosyne | balcanicus | Rothschild*"; (2) printed (on white paper) "BMNH(E) # 662038";
- [3 ♂] (1) printed with handwritten inscriptions [here italicized] (on white paper) "*♂ Paratype | B.M. TYPE | No.Rh. 18458 | Parnassius | mnemosyne | balcanicus | Rothschild*"; (2) printed (on white paper) "BMNH(E) # 662039";
- [4 ♂] (1) printed with handwritten inscriptions [here italicized] (on white paper) "*♂ Paratype | B.M. TYPE | No.Rh. 18459 | Parnassius | mnemosyne | balcanicus | Rothschild*"; (2) printed (on white paper) "BMNH(E) # 662040";
- [5 ♂] (1) printed with handwritten inscriptions [here italicized] (on white paper) "*♂ Paratype | B.M. TYPE | No.Rh. 18470 | Parnassius | mnemosyne | balcanicus | Rothschild*"; (2) printed (on white paper) "BMNH(E) # 662041";
- [6 ♂] (1) printed with handwritten inscriptions [here italicized] (on white paper) "*♂ Paratype | B.M. TYPE | No.Rh. 18469 | Parnassius | mnemosyne | balcanicus | Rothschild*"; (2) printed (on white paper) "BMNH(E) # 662042";
- [7 ♂] (1) printed with handwritten inscriptions [here italicized] (on white paper) "*♂ Paratype | B.M. TYPE | No.Rh. 18468 | Parnassius | mnemosyne | balcanicus | Rothschild*"; (2) printed (on white paper) "BMNH(E) # 662043";
- [8 ♂] (1) printed with handwritten inscriptions [here italicized] (on white paper) "*♂ Paratype | B.M. TYPE | No.Rh. 18467 | Parnassius | mnemosyne | balcanicus | Rothschild*"; (2) printed (on white paper) "BMNH(E) # 662044";
- [9 ♂] (1) printed with handwritten inscriptions [here italicized] (on white paper) "*♂ Paratype | B.M. TYPE | No.Rh. 18466 | Parnassius | mnemosyne | balcanicus | Rothschild*"; (2) printed (on white paper) "BMNH(E) # 662045";
- [10 ♂] (1) printed with handwritten inscriptions [here italicized] (on white paper) "*♂ Paratype | B.M. TYPE | No.Rh. 18465 | Parnassius | mnemosyne | balcanicus | Rothschild*"; (2) printed (on white paper) "BMNH(E) # 662046";
- [11 ♂] (1) printed with handwritten inscriptions [here italicized] (on white paper) "*♂ Paratype | B.M. TYPE | No.Rh. 18464 | Parnassius | mnemosyne | balcanicus | Rothschild*"; (2) printed (on white paper) "BMNH(E) # 662047";
- [12 ♂] (1) printed with handwritten inscriptions [here italicized] (on white paper) "*♂ Paratype | B.M.*

- TYPE | No.Rh. 18463 | *Parnassius* | *mnemosyne* | *balcanicus* | *Roths.*"; (2) printed (on white paper) "BMNH(E) # 662048";
- [13 ♂] (1) printed with handwritten inscriptions [here italicized] (on white paper) "♂ *Paratype* | B.M. TYPE | No.Rh. 18462 | *Parnassius* | *mnemosyne* | *balcanicus* | *Roths.*"; (2) printed (on white paper) "BMNH(E) # 662049";
- [14 ♂] (1) printed with handwritten inscriptions [here italicized] (on white paper) "♂ *Paratype* | B.M. TYPE | No.Rh. 18461 | *Parnassius* | *mnemosyne* | *balcanicus* | *Roths.*"; (2) printed (on white paper) "BMNH(E) # 662050";
- [15 ♂] (1) printed with handwritten inscriptions [here italicized] (on white paper) "♂ *Paratype* | B.M. TYPE | No.Rh. 18460 | *Parnassius* | *mnemosyne* | *balcanicus* | *Roths.*"; (2) printed (on white paper) "BMNH(E) # 662051";
- [16 ♂] (1) printed with handwritten inscriptions [here italicized] (on white paper) "♂ *Paratype* | B.M. TYPE | No.Rh. 18471 | *Parnassius* | *mnemosyne* | *balcanicus* | *Roths.*"; (2) printed (on white paper) "BMNH(E) # 662052";
- [17 ♀] (1) circle printed (on white paper with yellow frame) "Para- | type"; (2) printed with handwritten inscriptions [here italicized] (on white paper) "*Paratype* ♀ | B.M. TYPE | No.Rh. 18474 | *Parnassius* | *mnemosyne* | *balcanicus* | *Roths.*"; (3) printed (on white paper) "BMNH(E) # 662013";
- [18 ♀] (1) printed with handwritten inscriptions [here italicized] (on white paper) "♀ *Paratype* | B.M. TYPE | No.Rh. 18472 | *Parnassius* | *mnemosyne* | *balcanicus* | *Roths.*"; (2) printed (on white paper) "BMNH(E) # 662053";
- [19 ♀] (1) printed with handwritten inscriptions [here italicized] (on white paper) "♀ *Paratype* | B.M. TYPE | No.Rh. 18473 | *Parnassius* | *mnemosyne* | *balcanicus* | *Roths.*"; (2) printed (on white paper) "BMNH(E) # 662054";
- [20 ♀] (1) printed with handwritten inscriptions [here italicized] (on white paper) "♀ *Paratype* | B.M. TYPE | No.Rh. 18475 | *Parnassius* | *mnemosyne* | *balcanicus* | *Roths.*"; (2) printed (on white paper) "BMNH(E) # 662055";
- [21 ♀] (1) printed with handwritten inscriptions [here italicized] (on white paper) "♀ *Paratype* | B.M. TYPE | No.Rh. 18476 | *Parnassius* | *mnemosyne* | *balcanicus* | *Roths.*"; (2) printed (on white paper) "BMNH(E) # 662056";
- [22 ♀] (1) printed with handwritten inscriptions [here italicized] (on white paper) "♀ *Paratype* | B.M. TYPE | No.Rh. 18477 | *Parnassius* | *mnemosyne* | *balcanicus* | *Roths.*"; (2) printed (on white paper) "BMNH(E) # 662057";
- [23 ♀] (1) printed with handwritten inscriptions [here italicized] (on white paper) "♀ *Paratype* | B.M. TYPE | No.Rh. 18478 | *Parnassius* | *mnemosyne* | *balcanicus* | *Roths.*"; (2) printed (on white paper) "BMNH(E) # 662058";
 - All syntypes with (1) printed (on white paper) "Mahnjačageb. | Bosn. 1200 m | Mitte Juli"; (2) printed (on white paper) "Rothschild | Bequest | B. M. 1939-1."; (3) circle printed (on white paper with blue frame) "SYN- | TYPE"

Syntypes listed by ACKERY (1973: 10). Treated as a junior subjective synonym of *Parnassius mnemosyne leonhardiana* FRUHSTORFER, 1917 (BRYK, 1935: 84).

***balcanica* BRYK & EISNER, 1930**

"*Parnassius mnemosyne* L. subspecies *balcanica* (n.)" BRYK, F. & C. EISNER, 1930 (*Parnassius mnemosyne* L. subspecies *balcanica* (n.) - *Parnassiana* 1 (2) (27.VII.1930): 3-4). Type locality: [Yugoslavia: Kosovo]: "Schar-Dagh, Kacanik" (l. c.: 4).

Syntypes 1 ♂, 2 ♀♀ with labels:

- [1 ♂] printed (on white paper) "BMNH(E) # 662005";
- [2 ♀] printed (on white paper) "BMNH(E) # 662006";
- [3 ♀] (1) printed with handwritten inscriptions [here italicized] (on white paper) "♀ *Paratype* | B.M. TYPE | No.Rh. 18418 | *Parnassius* | *mnemosyne* | *balkanicus* | *Bryk and Eisner*"; (2) printed

(on white paper) "BMNH(E) # 662007";

Syntypes 1 and 2 with printed (on white paper), framed "Coll. Eisner | Berlin"; all with (1) printed with handwritten inscriptions [here italicized] (on white paper with black frame) "*Sar-Planina* | *bei Kacanik* | leg. *Bergel* | Dat. *V.1918*"; (2) circle printed (on white paper with yellow frame) "Para- | type"; (3) printed (on white paper) "mn. *balcanicus*"; (4) printed (on white paper) "Rothschild | Bequest | B. M. 1939-1."; (5) printed (on red paper) "PARATYPE"

Type material originally not stated. Not listed by ACKERY (1973). Treated as a different subspecies (BRYK, 1935: 87), although it is very similar to of *Parnassius mnemosyne caucasia* VERITY, [1911].

talboti BRYK, 1932

"*Parnassius mnemosyne talboti* subsp. nova." BRYK, F., 1932a (Parnassiologische Studien aus England. – Parnassiana 2 (3) (10.VI.19132): 33). Type locality: [Croatia]: "Zara [= Zadar] (Dalmatien)" (l. c.: 33).

Syntypes 1 ♂, 2 ♀♀ with labels:

[1 ♂] (1) circle printed (on white paper with red frame) "Holo- | type"; (2) printed with handwritten inscriptions [here italicized] (on white paper) "♂ *Holotype* | B.M. TYPE | No.Rh. *18319* | *Parnassius* | *mnemosyne* | *talboti* | *Bryk.*"; (3) printed (on white paper) "BMNH(E) # 662020";

[2 ♀] (1) circle printed (on white paper with red frame) "Type- | A T"; (2) circle printed (on white paper with red frame) "Type- | H T"; (3) printed with handwritten inscriptions [here italicized] (on white paper) "♀ *Allotype* | B.M. TYPE | No.Rh. *18320* | *Parnassius* | *mnemosyne* | *talboti* | *Bryk.*"; (4) printed (on white paper) "BMNH(E) # 662021";

[3 ♀] (1) circle printed (on white paper with yellow frame) "Para- | type"; (2) printed (on white paper) "Ex. Coll. | H. M. Peebles. | 1931."; (3) handwritten (on white paper) "Brit. Mus. | 1931-586."; (4) circle printed (on white paper with green frame) "Type- | P. T."; (5) printed with handwritten inscriptions [here italicized] (on white paper) "♀ *Paratype* | B.M. TYPE | No.Rh. *18321* | *Parnassius* | *mnemosyne* | *talboti* | *Bryk.*"; (6) printed (on white paper) "BMNH(E) # 662022";

– Syntypes 1 and 2 with (1) black circle; (2) printed (on white paper) "Ex. coll. | H. M. Peebles. | B.M. 1947-203."; all syntypes with (1) handwritten (on white paper) "Zara"; (2) printed (on white paper) "Ex. Coll. | H. J. Elwes, | 1920."; (3) printed (on white paper) "Ex. Coll. | Hill Museum. | 1931."

Listed by ACKERY (1973: 26). Treated as a different subspecies (BRYK, 1935: 85).

parnassia BRYK, 1932

"[*Parnassius mnemosyne*] *parnassia* subsp. nova." BRYK, F., 1932b (Parnassiologische Studien aus England. – Parnassiana 2 (4/5) (6.VIII.1932): 46). Type locality: [Greece]: "Parnass" (l. c.: 46).

Syntypes 2 ♂♂, 1 ♀ with labels:

[1 ♂] (1) handwritten (on white paper) "Parnassus | Kruper | 1890"; (2) printed with handwritten inscriptions [here italicized] (on white paper) "♂ *Paratype* | B.M. TYPE | No.Rh. *18361* | *Parnassius* | *mnemosyne* | *parnassia* | *Bryk.*"; (3) printed (on white paper) "BMNH(E) # 662023";

[2 ♂] (1) circle printed (on white paper with red frame) "Type"; (2) handwritten (on white paper) "1/6 60"; (3) handwritten (on white paper) "Parnass | /4 65"; (4) printed (on white paper) "Greece | Merlin Coll. | 96-275"; (5) printed with handwritten inscriptions [here italicized] (on white paper) "♂ *Holotype* | B.M. TYPE | No.Rh. *18360* | *Parnassius* | *mnemosyne* | *parnassia* | *Bryk.*"; (6) printed (on white paper) "BMNH(E) # 662024";

[3 ♀] (1) handwritten (on white paper) "v. Athene | Graec. Parnass"; (2) printed (on white paper) "999."; (3) handwritten (on white paper) "Paratype | Parnassiana | p. 46 1932", on the back side "parnassia | type Bryk"; (4) printed (on white paper) "Rothschild | Bequest | B.M.

1939-1."; (5) printed with handwritten inscriptions [here italicized] (on white paper) "♀ *Paratype* | B.M. TYPE | No.Rh. 18359 | *Parnassius* | *mnemosyne* | *parnassia* | *Bryk.*"; (6) printed (on white paper) "BMNH(E) # 662025";
 - Syntypes 1 and 3 with additional circle printed (on white paper with yellow frame) "Para- | type"

Listed by ACKERY (1973: 21). This taxon was originally described and subsequently treated as a different subspecies (BRYK, 1935: 85).

bulgarica EISNER, 1936

"*P[arnassius] mnemosyne* subsp. *bulgarica* (subsp. nova)." EISNER, C., 1936 (*P. mnemosyne* subsp. *bulgarica* (subsp. nova). - Parnassiana 4 (1-2) (19.XII.1936): 9). Type locality: "Pisanec am Lom, 300 m N.O. Bulgarien" (l. c.: 9).

Paralectotypes 3 ♂♂, 1 ♀ with labels:

- [1 ♂] (1) printed (on white paper) "Museum Leiden | Verzameling | C. Eisner"; (2) printed with handwritten inscriptions [here italicized] (on white paper) "♂ *P T.* | B.M. TYPE | No.Rh. 18286 | *Parnassius* | *mnemosyne* | *bulgariaca* | *Bryk.*"; (2) printed (on white paper) "BMNH(E) # 662018";
- [2 ♂] (1) printed with handwritten inscriptions [here italicized] (on white paper) "♂ *P T.* | B.M. TYPE | No.Rh. 18287 | *Parnassius* | *mnemosyne* | *bulgariaca* | *Bryk.*"; (2) printed (on white paper) "BMNH(E) # 662017";
- [3 ♂] (1) printed with handwritten inscriptions [here italicized] (on white paper) "♂ *P T.* | B.M. TYPE | No.Rh. 18288 | *Parnassius* | *mnemosyne* | *bulgariaca* | *Bryk.*"; (2) printed (on white paper) "Illustrated in | Abadjiev, S. 1993 | Butterflies of Bulgaria | Part 2: Pl. 16: Figs 1-3"; (3) printed (on white paper) "BMNH(E) # 662016";
- [4 ♀] (1) printed (on red paper) "Paratype"; (2) printed with handwritten inscriptions [here italicized] (on white paper) "♀ *P T.* | B.M. TYPE | No.Rh. 18285 | *Parnassius* | *mnemosyne* | *bulgariaca* | *Bryk.*"; (2) printed (on white paper) "BMNH(E) # 662019";
 - Paralectotypes 1 and 3 with printed (on red paper) "PARATYPE"; 2-4 with printed (on white paper) "Brit. Mus. | 1937-157"; all paralectotypes with (1) printed (on white paper) "Pisanec am Lom | N.O. Bulgarien 300 m. | V.1935 leg.Heinrich"; (2) circle printed (on white paper with yellow frame) "Para- | type"; (3) circle printed (on white paper with blue frame) "PARA- | LECTO- | TYPE"; (4) printed (on white paper) "Spec. exam. | C.Eisner"; (5) printed (on white paper) "PARALECTOTYPE | Parnassius mnemosyne | bulgarica Eisner. | det. P. Ackery, 1991."

Paralectotypes listed by ACKERY (1973: 11) and ABADJIEV (1992: 25); paralectotype 3 illustrated in colour in ABADJIEV (1993: 126; Pl. XVI: Figs 1-3). Originally the type series comprises 19 ♂♂, 18 ♀♀ (EISNER, 1936: 9). Lectotype designated by EISNER (1966: 10). A junior subjective synonym of *Parnassius mnemosyne caucasia* VERITY, [1911], **syn. nov.**

P. apollo (LINNAEUS, 1758)

ottonius FRUHSTORFER, 1909

"*P[arnassius] apollo ottonius* nov. subspec." FRUHSTORFER, H., 1909f (Neues über *Parnassius apollo*. - Int. ent. Z. 3 (30) (23.X.1909): 161). Type locality: "österreichischen Küstenlande... Krain" (l. c.: 161).

Syntypes ♂, ♀ with labels:

- [1 ♂] printed (on white paper) "BMNH(E) # 6620233";
- [2 ♀] printed (on white paper) "BMNH(E) # 6620234";
 - Both syntypes with (1) printed with handwritten inscriptions [italicized] (on white paper), framed "Oestr. Küstenland | Fužine 7.1906 | legit M. Hilf | Coll. O. Leonhard"; (2) printed (on

red paper) "Type"; (3) circle printed (on white paper with blue frame) "SYN- | TYPE"; (4) printed (on white paper) "Fruhstorfer Coll. | B. M. 1937-285"

Syntypes listed by ACKERY (1973: 21). The subsequent treatment of *Parnassius apollo ottonius* FRUHSTORFER, 1909 as a junior subjective synonym of *P. apollo rhea* (PODA, 1761) (BRYK, 1935: 449, ACKERY, 1973: 21; CAPDEVILLE, 1979: 109; GLASSL, 1993: 131) is erroneous. This taxon is surely a senior subjective synonym of *P. apollo leimdoerfferi* BRYK, 1935.

jelicus FRUHSTORFER, 1921

"*Parnassius apollo jelicus* subspec. nova." FRUHSTORFER, H., 1921 (Neue *Parnassius apollo* Rassen. – Ent. Anz. 1 (8) (10.VIII.1921): 87). Type locality: [Yugoslavia]: "Serbien, Jelicapaß" (l. c.: 87).

Syntype ♂ with labels:

(1) printed with handwritten inscriptions [here italicized] (on white paper) "*Serbien | Jelika Pass | Fruhstorfer*"; (2) printed (on white paper), framed "jelicus | Fruhst."; (3) printed (on white paper), framed "Type"; (4) circle printed (on white paper with blue frame) "SYN- | TYPE"; (5) printed (on white paper) "Fruhstorfer Coll. | B. M. 1937-285"; (6) printed (on white paper) "BMNH(E) # 662027"

Listed by ACKERY (1973: 17). The distribution "Jelica-Paß, nördlich von Mostar (Serbia)" stated by GLASSL (1993: 71) is clearly erroneous.

omotimoius FRUHSTORFER, 1921

"*P. apollo omotimoius* subspec. nova." FRUHSTORFER, H., 1921 (Neue *Parnassius apollo* Rassen. – Ent. Anz. 1 (8) (10.VIII.1921): 87). Type locality: "Vitosch bei Sofia, Bulgarien" (l. c.: 88).

Syntype ♀ with labels:

(1) circle printed (on white paper with blue frame) "SYN- | TYPE"; (2) printed (on white paper) "Vitosch | Juli Sofia | Bulgarien"; (3) printed (on white paper), framed "Type"; (4) printed (on white paper) "Fruhstorfer Coll. | B. M. 1937-285"; (5) handwritten (on white paper) "omotimoius | Fruhst."; (6) printed (on white paper) "BMNH(E) # 662031"

Listed by ACKERY (1973: 21) and ABADJIEV (1992: 24). A junior subjective synonym of *Parnassius apollo graecus* ZIEGLER, 1901 (In: Sitzungsberichte... – Berliner Entomologische Zeitschrift 46 (1) (VI.1901): (11)), **syn. nov.**

yglanus FRUHSTORFER, 1921

"*P. apollo yglanus* subspec. nova." FRUHSTORFER, H., 1921 (Neue *Parnassius apollo* Rassen. – Ent. Anz. 1 (8) (10.VIII.1921): 88). Type locality: "Rila Planina, 1400 mm, Bulgarien" (l. c.: 88).

Syntype ♀ with labels:

(1) circle printed (on white paper with blue frame) "SYN- | TYPE"; (2) printed (on red paper) "Type"; (3) printed (on white paper) "♀"; (4) printed with handwritten inscriptions [here italicized] (on white paper, framed) "*Rila-planina | 1400 m*", on the back side "*8.VIII. | 1906*"; (5) printed with handwritten inscriptions [here italicized] (on white paper, framed) "*Bulgarien | Al. K. Drenowski*"; (6) handwritten (on white paper) "In coll. Fr. | without a name. | near omotimoius | Fr."; (7) printed (on white paper) "Fruhstorfer Coll. | B. M. 1937-285"; (8) printed (on white paper) "BMNH(E) # 662032"

Listed by ACKERY (1973: 29) and ABADJIEV (1992: 24). A junior subjective synonym of *Parnassius apollo graecus* ZIEGLER, 1901, **syn. nov.**

hermiston FRUHSTORFER, 1921

"*Parnassius apollo hermiston* subsp. nova." FRUHSTORFER, H., 1921 (*Neue Parnassius apollo* Rassen. – Ent. Anz. 1 (8) (10.VIII.1921): 89). Type locality: [Bulgaria]: "Balkan, Schipkapaß, ca. 1300 m" (l. c.: 89).

Syntype ♂ (Colour plate I: Fig. 1) with labels:

(1) printed with handwritten inscriptions [here italicized] (on white paper) "*Schipka* | Fruhstorfer"; (2) printed (on white paper), framed "hermiston | Fruhst."; (3) printed (on white paper), framed "Type"; (4) circle printed (on white paper with blue frame) "Syn- | type"; (5) circle printed (on white paper with blue frame) "SYN- | TYPE"; (6) printed (on white paper) "Fruhstorfer Coll. | B. M. 1937-285"; (7) printed (on white paper) "SYNTYPE | *Parnassius apollo* | hermiston | Fruhstorfer | det. P. Ackery, 1991."; (8) printed (on white paper) "BMNH(E) # 662026"

Syntype listed by ACKERY (1973: 15) and ABADJIEV (1992: 24). This taxon is treated here as a junior subjective synonym of *Parnassius apollo graecus* ZIEGLER, 1901, **syn. nov.**

olympiacus KOLAR & REBEL, 1934

[*Parnassius apollo* L.] "*olympiacus* Kolar et Rebel" KOLAR, H. & H. REBEL, 1934 (In: KOLAR, H. *Parnassius apollo* L. auf dem Olymp. Int. ent. Z. 28 (29) (1.XI.1934): 368). Type locality: [Greece]: "aus der Gegend der über 1300 m hoch gelegenen Kalyvia Vrissula am Olymp" (l. c.: 366).

Syntype ♂ with labels:

(1) circle printed (on white paper with blue frame) "SYN- | TYPE"; (2) printed with handwritten inscriptions [here italicized] (on white paper) "*Olymp* | *Kasaphygi* | 2200 m | 01.VIII.1934 | coll. Dr. H. Kolar"; (3) handwritten (on pink paper) "Type | *olympiacus* Kol. Rbl."; (4) printed (on white paper) "BMNH(E) # 662030"

Syntype listed by ACKERY (1973: 21). Additional type material exists in NHMW (BRYK, 1935: 399). Treated here as a junior subjective synonym of *Parnassius apollo graecus* ZIEGLER, 1901, **syn. nov.**

thessalicus O. BANG-HAAS, 1934

"*Parnassius apollo thessalicus* O. B.-Haas, subsp. nova" BANG-HAAS, O. (1934b): Neubeschreibungen und Berichtigungen der Palaearktischen Macrolepidopterenfauna XIV. – Ent. Z. Frankf. a. M. 48 (16) (22.XI.1934): 128). Type locality: "Graecia sept., Prov. Thessalia, Litchoran, Olymp, hochalpine Region, 2100–2400 m" (l. c.: 128).

Syntypes 2 ♂♂, 1 ♀ with labels:

- [1 ♂] (1) printed (on white paper) "354"; (2) printed (on white paper) "BMNH(E) # 6620235";
 [2 ♂] (1) circle printed (on white paper with yellow frame) "Co- | type"; (2) printed (on white paper) "Brit.Mus. | 1936-586"; (3) printed (on white paper) "BMNH(E) # 6620236";
 [3 ♀] (1) printed (on white paper) "355"; (2) printed (on white paper) "BMNH(E) # 6620237";
 – Syntypes 1 and 3 with (1) printed (on white paper) "Brit.Mus. | 1936-809"; (2) circle printed (on white paper with yellow frame) "Para- | type"; all the syntypes with (1) printed (on white paper) "Graecia | Thessalia | Olymp | 2200 m. Aug."; (2) circle printed (on white paper with blue frame) "SYN- | TYPE"; (3) printed (on red paper) "Co-Type | e Collection | Bang-Haas"

Syntypes listed by ACKERY (1973: 27). OTTO BANG-HAAS introduced the name *thessalicus* under the combination [*Parnassius*] "*apollo thessalicus* O. B.-H." firstly in his previous paper "XIII" (1934a (22.X.1934): 110), unfortunately not supported with any description, definition or indication (nomen nudum, unavailable name). The necessary description appeared almost a month later in his next paper "XIV"; in this case giving the priority of *Parnassius apollo olympiacus* KOLAR & REBEL, 1934 (see the exact publication date of this taxon above) as a senior synonym. This taxon is treated here also as a junior subjective synonym of *Parnassius apollo graecus* ZIEGLER, 1901, **syn. nov.**

***leimdoerfferi* BRYK, 1935**

"*P.[arnassius] apollo leimdoerfferi*" BRYK, F., 1935 (Lepidoptera. Parnassiidae pars II (Subfam. Parnassiinae). Das Tierreich 65: 450). Type locality: [Croatia]: "Fiume [= Rijeka] (Cirkvenica [= Crikvenica] Distrikt)" (l. c.: 450).

Syntypes ♂, ♀ with labels:

- [1 ♂] printed (on white paper) "BMNH(E) # 662028";
- [2 ♀] printed (on white paper) "BMNH(E) # 662029";
- Both syntypes with (1) printed (on white paper) "Jugo Slavia: | Fiume. | Cirkvenica Distr. | Mrs de M. Leathes. | B.M. 1924-516"; (2) circle printed (on white paper with red frame) "Type"

Syntypes listed by ACKERY (1973: 18). A junior subjective synonym of *Parnassius apollo ottonius* FRUHS-TORFER, 1909, **syn. nov.** Treated also as a junior subjective synonym of *Parnassius apollo liburnicus* REBEL & ROGENHOFER, 1893 (CAPDEVILLE, 1979: 113).

PIERIDAE

Colias [FABRICIUS in Illiger], 1807 [cf TAEGER & GAEDIKE, 2001]

C. caucasica STAUDINGER, 1871

***balcanica* REBEL, 1901**

"*Colias Myrmidone* Esp. v. *Balcanica* Rbl." REBEL, H., 1901 (In: STAUDINGER, O. & H. REBEL, Nachträge (Addenda) zum Theil I.: 250). Type locality: Bosnia and Herzegovina: Vučja Bara (REBEL, 1904: 139, 142: "Vučija bara, Hochtal (1246 [m]) zwischen der 'Bjelasica, Berg (1867 [m]) südwestl. von Gacko' und der 'Baba (Djed), Berg (1737 [m]) westl. von Gacko'"); UTM grid reference 34TBN88.

Syntype ♂ with labels:

- (1) printed with handwritten inscriptions [here italicized] (on white paper) "Bosn. Rbl. | *Trebevic* | 5.VII.98"; (2) printed (on white paper) "Elwes Coll. | 1902-85"; (3) printed with handwritten inscriptions [here italicized] (on white paper, double framed) "SYNTYPE ♂ | *Colias* | *myrmidone* | *balcanica* | [line] | Dr S. Abadjiev det. 2001"; (4) printed (on white paper) "BMNH(E) # 662123"

Additional type material (syntypes) exists in the collections of NHMW and NMNH. Lectotype not designated (cf HESSELBARTH, VAN OORSCHOT & WAGENER, 1995: 328) by ABADJIEV (1992). This taxon is treated as a different subspecies, *Colias caucasica balcanica* REBEL, 1901 (WAGENER, 1990: 59), endemic for the Balkan Peninsula.

Anthocharis BOISDUVAL, RAMBUR, DUMÉRIL & GRASLIN, [1833]

A. gruneri HERRICH-SCHÄFFER, [1851]

***parnassia* BERNARDI, 1970**

"*A.[nthocharis] gruneri parnassia* subsp. nov." BERNARDI, G., 1970 (La variation géographique de l'*Anthocharis gruneri* Herrich Schaffer [sic] Lambilionea 70 (1-4) (25.IV.1970): 2). Type locality: "Graecia, Parnassus" (l. c.: 4).

Paratypes 14 ♂♂, 5 ♀♀ with labels:

- [1 ♂] (1) printed with handwritten inscriptions [here italicized] (on white paper) "Parnassus. | Greece. | 21V.1900 | H. J. Elwes."; (2) printed (on white paper) "BMNH(E) # 662059";

- [2 ♂] (1) printed (on white paper) "Morea. | V.1900 | H. J. Elwes."; (2) printed (on white paper) "BMNH(E) # 662060";
- [3 ♂] (1) printed with handwritten inscriptions [here italicized] (on white paper) "Morea. | 14V.1900 | H. J. Elwes."; (2) printed (on white paper) "BMNH(E) # 662061";
- [4 ♂] printed (on white paper) "BMNH(E) # 662062";
- [5 ♂] printed (on white paper) "BMNH(E) # 662063";
- [6 ♂] printed (on white paper) "BMNH(E) # 662064";
- [7 ♂] printed (on white paper) "BMNH(E) # 662065";
- [8 ♂] printed (on white paper) "BMNH(E) # 662066";
- [9 ♂] printed (on white paper) "BMNH(E) # 662067";
- [10 ♂] printed (on white paper) "BMNH(E) # 662068";
- [11 ♂] printed (on white paper) "BMNH(E) # 662069";
- [12 ♂] (1) handwritten (on white paper) "Euchloe Gruneri ♂ Var"; (2) printed (on white paper) "BMNH(E) # 662070";
- [13 ♂] (1) handwritten (on white paper) "Euchloe Gruneri ♂"; (2) printed (on white paper) "BMNH(E) # 662071";
- [14 ♂] printed (on white paper) "BMNH(E) # 662072";
- [15 ♀] printed (on white paper) "BMNH(E) # 662073";
- [16 ♀] printed (on white paper) "BMNH(E) # 662074";
- [17 ♀] printed (on white paper) "BMNH(E) # 662075";
- [18 ♀] (1) printed with handwritten inscriptions [here italicized] (on white paper) "Morea. | 16V.1900 | H. J. Elwes."; (2) printed (on white paper) "BMNH(E) # 662076";
- [19 ♀] printed (on white paper) "BMNH(E) # 662077";
 - Paratypes 1-4 and 15-18 with additional printed (on white paper) "Elwes Coll. | 1902-85"; 4-6 and 17 with printed with handwritten inscriptions [here italicized] (on white paper) "Morea. | 15V.1900 | H. J. Elwes."; 5 and 6 with (1) printed (on white paper) "Ex Coll. | H. J. Elwes, | 1920."; (2) printed (on white paper) "Joicey | Bequest. | Brit.Mus. | 1934-120."; 7, 8 and 19 with (1) printed with handwritten inscriptions [here italicized] (on white paper) "Parnass | 10 4 65."; (2) printed (on white paper) "Greece | Merlin Coll. | 96-275"; 9 and 10 with printed with handwritten inscriptions [here italicized] (on white paper) "GREECE: | Kaseniani. | 13.IV.1935 | R.A.Denne. | B M. 1935-300"; 11-14 with printed (on white paper) "GREECE: | Kaseniani. | 23.III.1935 | R.A.Denne. | B M. 1935-300"; 15 and 16 with printed with handwritten inscriptions [here italicized] (on white paper) "Morea. | 13V.1900 | H. J. Elwes."; all the paratypes with printed with handwritten inscriptions [here italicized] (on red paper), double framed "PARATYPE ♂ [♀ respectively] | *Anthocharis* | *gruneri parnassia* | [line] Dr. S. Abadjiev det. 2001"

The originally stated (BERNARDI, 1970: 4) type material in the BMNH (1 ♂: Parnassus 10.IV.1965 (Coll. Berlin [right Merlin]); 1 ♂: Parnassus 21.V.1900 (Coll. Elwes); 2 ♂♂: Kaseniani, Greece, 31.III.1935 [right 23.III.1935], 13.IV.1935 (Denne); 1 ♂, 1 ♀: Morea (Coll. Elwes)) has not been labelled properly and differs both in number of specimens and label contents. Additional type material exists in the collections of MHNP (holotype ♂, paratypes) and ZMHB. Treated as a junior subjective synonym of *Anthocharis gruneri gruneri* HERRICH-SCHÄFFER, [1851] (HESSELBARTH, VAN OORSCHOT & WAGENER, 1995: 362).

Pieris SCHRANK, 1801

P. rapae (LINNAEUS, 1758)

atomaria FRUHSTORFER, 1909

"*P. rapae* forma *atomaria* nova... oder subsp. nova" FRUHSTORFER, H., 1909b (Neues über *Pieris manni* [sic]. - Ent. Z. 23 (8) (22.V.1909): 42). Type locality: "Dalmatien" (l. c. 42).

Syntypes 2 ♀♀ with labels:

- [1] (1) printed with handwritten inscriptions [here italicized] (on white paper) "*Dalmatia | Spalato | 22.4.1908 | [on the left] H. STAUDER*"; (2) handwritten (on white paper, framed) "fa | atomaria | Fruhst."; (3) printed (on white paper) "BMNH(E) # 662220";
 [2] (1) printed with handwritten inscriptions [here italicized] (on white paper) "*Dalmatia | Spalato | 20.5.08 | [on the left] H. STAUDER*"; (2) printed (on white paper) "BMNH(E) # 662221";
 Both syntypes with (1) printed (on red paper) "Type"; (2) printed (on white paper) "Fruhs-
 torfer Coll. | B.M. 1937-285."

Type material originally not stated. Omitted by KUDRNA (1985). A junior subjective synonym of *Papilio rapae rapae* LINNAEUS, 1758 (HESSELBARTH, VAN OORSCHOT & WAGENER, 1995: 402).

P. ergane (GEYER, [1828])

stefanellii VERITY, [1908]

"*Pieris ergane* gen. vern. var. *stefanellii*" VERITY, R., [1908] (Rhopalocera Palaearctica...: 153 (31.I. 1908); Pl. XXXIII (30.XI.1908): Fig. 32–36; Pl. XXXIV (30.VI.1908): Fig. 1 [erroneously as underside of Pl. XXXIII: Fig. 23; right 32]). Type locality: "Grèce" (l. c.: Pl. XXXIII: Fig. 32).

Syntype ♀ with labels:

- (1) printed (on white paper), framed "ExMuseo | A KUWERT | [on the right] 1894"; (2) handwritten (on gray paper), framed "Pieris | Ergane | ♀ | Griechenland"; (3) circle printed (on white paper with red frame) "Type | A T"; (4) handwritten (on white paper) "stefanellii | Verity | ♀ Allotype"; (5) printed with handwritten inscriptions [here italicized] (on white paper) "Figuré par R. Verity | RHOPAL. PALAEARCTICA | Pl. XXXIII fig. 34"; (6) printed (on white paper) "Ex Oberthür Coll. | Brit.Mus.1927-3."; (7) printed (on white paper) "BMNH(E) # 662227"

Additional type material (13 ♂♂) in MZSF (KUDRNA, 1983: 61); syntypes from Greece: Attica (8 ♂♂) with uncertain status (l. c.: 61). Treated as an infrasubspecific taxon (l. c.: 61).

LYCAENIDAE

Lycaena [FABRICIUS in ILLIGER], 1807 [cf TAEGER & GAEDIKE, 2001]

L. virgaureae (LINNAEUS, 1758)

balcanicola GRAVES, 1928

"*Lycaena virgaureae*, subsp. *balcanicola* nov." GRAVES, P. P., 1928 (In: GRAVES, P. P. & A. F. HEMMING, The geographical variation of *Lycaena virgaureae* Linn. – Entomologist 61 (780): 106–107). Type locality: "Southern Bulgaria, Kostenetz (Kosteneec), 3000 ft." (l. c.: 106).

Holotype ♂ (Colour plate I: Figs 2–3) with labels:

- (1) circle printed (on white paper with red frame) "Holo- | type"; (2) circle printed (on white paper with red frame) "Type"; (3) printed with handwritten inscriptions [here italicized] (on white paper) "*Kosteneec | S. W. Bulgaria | 3 000 ft 14 7 99. | H. J. Elwes*"; (4) printed (on white paper) "Elwes Coll. | 1902-85"; (5) printed with handwritten inscriptions [here italicized] (on white paper) "B. M. TYPE | No. Rh. 273 | *H. virgaureae* | ssp. | *balcanicola*, | Graves. | ♂ *Holotype*."; (6) printed (on white paper) "HOLOTYPE | *Lycaena virgaureae* | *balcanicola* | Graves | det. P. Ackery, 1991."; (7) printed (on white paper) "BMNH(E) # 662104"

Paratypes 19 ♂♂, 8 ♀♀ with labels:

- [1 ♂] printed (on white paper) "BMNH(E) # 662078";

- [2 ♂] (1) printed with handwritten inscriptions [here italicized] (on white paper) "Brit.Mus. | 1937-144."; (2) printed (on white paper) "BMNH(E) # 662079";
- [3 ♂] printed (on white paper) "BMNH(E) # 662080";
- [4 ♂] printed (on white paper) "BMNH(E) # 662081";
- [5 ♂] printed (on white paper) "BMNH(E) # 662082";
- [6 ♂] (1) printed (on white paper) "Varnik, | Bulgaria | July 1927. | (P. P. Graves)"; (2) printed (on white paper) "BMNH(E) # 662083";
- [7 ♂] printed (on white paper) "BMNH(E) # 662084";
- [8 ♂] printed (on white paper) "BMNH(E) # 662085";
- [9 ♂] printed (on white paper) "BMNH(E) # 662086";
- [10 ♂] printed (on white paper) "BMNH(E) # 662087";
- [11 ♂] (1) printed with handwritten inscriptions [here italicized] (on white paper) "Varnik (calc.) | Musalla Mtns., | circ. 4600 ft. | 21.VII 1927 | P. P. Graves."; (2) printed (on white paper) "Rothschild | Bequest | B.M. 1939-1."; (3) printed (on white paper) "BMNH(E) # 662088";
- [12 ♂] printed (on white paper) "BMNH(E) # 662089";
- [13 ♂] (1) printed with handwritten inscriptions [here italicized] (on white paper) "Vitosha Mt. | 2700 ft. | 8.VII.1922 | P. Chorbajeff."; (2) printed (on white paper) "BMNH(E) # 662090";
- [14 ♂] printed (on white paper) "BMNH(E) # 662091";
- [15 ♂] printed (on white paper) "BMNH(E) # 662092";
- [16 ♂] printed (on white paper) "BMNH(E) # 662093";
- [17 ♂] printed (on white paper) "BMNH(E) # 662094";
- [18 ♂] printed (on white paper) "BMNH(E) # 662095";
- [19 ♂] printed (on white paper) "BMNH(E) # 662096";
- [20 ♀] Allotype (Colour plate I: Figs 4–5) (1) circle printed with handwritten inscriptions [here italicized] (on white paper with red frame) "Allo- | type"; (2) circle printed (on white paper with red frame) "Type"; (3) handwritten (on white paper) "Sofia | 12.VIII.97 | Bachmetjew"; (4) printed (on white paper) "Elwes Coll. | 1902-85"; (5) printed with handwritten inscriptions [here italicized] (on white paper) "B. M. TYPE | No. Rh. 274 | *H. virgaureae* | ssp. | *balcanicola*, | Graves. | ♀ Allotype."; (6) printed (on white paper) "ALLOTYPE | *Lycaena virgaureae* | *balcanicola* | Graves. | det. P. Ackery, 1991."; (7) printed (on white paper) "BMNH(E) # 662105";
- [21 ♀] printed (on white paper) "BMNH(E) # 662097";
- [22 ♀] (1) printed with handwritten inscriptions [here italicized] (on white paper) "Bansko, Mac., | Pirin Mtns. | 3000–4300 ft. | 14.viii. 1923. | P. Chorbajeff."; (2) printed (on white paper) "BMNH(E) # 662098";
- [23 ♀] (1) printed with handwritten inscriptions [here italicized] (on white paper) "Bansko, Mac., | Pirin Mtns. | 3000–4300 ft. | 12.viii. 1923. | P. Chorbajeff."; (2) printed (on white paper) "BMNH(E) # 662099";
- [24 ♀] (1) printed with handwritten inscriptions [here italicized] (on white paper) "Slivnitza Vall., | Musalla Mtns. | 3100–3500 ft. | 25.VII 1925 | capt. P.P.G."; (2) printed (on white paper) "BMNH(E) # 662100";
- [25 ♀] (1) printed with handwritten inscriptions [here italicized] (on white paper) "Slivnitza Vall., | Musalla Mtns. | 3100–3500 ft. | 25.VII 1925 | capt. P.P.Graves"; (2) printed (on white paper) "BMNH(E) # 662101";
- [26 ♀] printed (on white paper) "BMNH(E) # 662102";
- [27 ♀] (1) printed with handwritten inscriptions [here italicized] (on white paper) "Rilska Valley, | below Monastery, 2500–3400 ft. | 7.VII 1927 | capt. | P. P. Graves"; (2) printed (on white paper) "BMNH(E) # 662103";
- Paratypes 1, 2, 8, 12 and 26 with additional (1) printed with handwritten inscriptions [here italicized] (on white paper) "Varnik (calc.) | Musalla Mtns., | circ. 4600 ft. | 14.VII 1927 | P. P. Graves."; paratypes 1, 3–5, 8–10, 12–19, and 21–27 with printed (on white paper) "P.P.Graves. | B.M. 1937-655."; paratypes 3, 7, 9 and 10 with printed with handwritten inscriptions [here italicized] (on white paper) "Rilska Valley, | below Monastery, 2500–3400 ft. | 7.VII.1927 | capt."; paratypes 4 and 5 with printed with handwritten inscriptions [here italicized]

cized] (on white paper) "Rilska Valley, | below Monastery, 2500–3400 ft. | 7.VII 1927 | P. P. Graves capt."; 6 and 7 with printed (on white paper) "Rothschild | Bequest"; 14–19 and 21 with printed with handwritten inscriptions [here italicized] (on white paper) "Bansko, Mac., | Pirin Mtns. | 3000–4300 ft. | 12–14.viii. 1923. | P. Chorbajieff."; all the paratypes (except the allotype 20) with printed with handwritten inscriptions [here italicized] (on red paper, double framed) "PARATYPE { ♀ respectively} | *Lycaena* | *virgaureae* | *balcanicola* | [line] | Dr S. Abadjiev det. 2001"

Treated as a junior subjective synonym of *Papilio virgaureae virgaureae* LINNAEUS, 1758 (HESSELBARTH, VAN OORSCHOT & WAGENER, 1995: 470).

L. candens (HERRICH-SCHÄFFER, [1844])

leonhardi FRUHSTORFER, 1917

"*Chr. hippothoë leonhardi* subsp. nov." FRUHSTORFER, H., 1917d (Neue Lycaeniden. – Ent. Rdsch. 34 (4) (13.IV.1917): 16). Type locality: "Bulgarien, Rilo... Herzegowina Vucijabara" (l. c.: 16).

Syntypes 1 ♂, 2 ♀♀ with labels:

[1 ♂] (Colour plate I: Figs 6–7) (1) circle printed (on white paper with blue frame) "SYN- | TYPE"; (2) circle printed (on white paper with red frame) "Type | H T"; (3) printed (on white paper, framed) "Bulg. Tschamkorija | M. Hilf 1911 | Coll. O. Leonhard"; (4) handwritten (on white paper) "Presumed type | of leonhardi | Fruhst. | (G.T., May, 1941)."; (5) printed (on white paper) "BMNH(E) # 662106";

[2 ♀] (Colour plate I: Figs 8–9) (1) circle printed (on white paper with red frame) "Type | A T"; (2) printed with handwritten inscriptions [here italicized] (on white paper, framed) "Bulg. Tschamkorija | 17.8. | M. Hilf 1911 | Coll. O. Leonhard"; (3) handwritten (on white paper) "Presumed | ♀ type of | leonhardi | Fruhst. | (G.T., May, 1941)."; (4) handwritten (on white paper) "Pol. hip. aber- | ratio"; (5) printed (on white paper) "BMNH(E) # 662107";

[3 ♀] (1) printed with handwritten inscriptions [here italicized] (on white paper, framed) "Bulg. Tschamkorija | 20.7. | M. Hilf 1911 | Coll. O. Leonhard"; (2) printed (on white paper) "BMNH(E) # 662108";

– Syntypes 1 and 2 with printed (on white paper) "Fruhstorfer Coll. | B.M.1933-131"; 2 and 3 with circle printed (on white paper with blue frame) "Syn- | type"; all the syntypes with printed (on white paper) "SYNTYPE | Chrysophanus | hippothoë leonhardi | Fruhstorfer. | det. P. Ackery, 1991."

Type material originally mentioned consisted of "5 ♂♂, 4 ♀♀ Koll. Fruhst., eine große Serie in der Sammlung Leonhard" (l. c.: 16). This taxon was originally described as a subspecies of *Lycaena hippothoë* (LINNAEUS, 1761); subsequently treated as a subspecies of *Lycaena candens* (HERRICH-SCHÄFFER, [1844]). *Lycaena candens leonhardi* FRUHSTORFER, 1917 is an endemic for the Balkan Peninsula.

Pseudophilotes BEURET, 1958

P. vicrama (MOORE, 1865)

anteschiffmulleri VERITY, 1936

"*Turanana baton*, Bergstr. exerge (or twin species?) *vicrama*, Moore, race *schiffmülleri*, Hemming: l. gen. *anteschiffmülleri*, nom. nov." VERITY, R., 1936 (The Butterfly races of Macedonia. – Entomologist's Rec. J. Var. 48 (11–12) (Suppl.) (XI–XII.1936): 5). Type locality: [Greece]: "Salonika" (l. c.: 5).

Syntypes ♂, ♀ with labels:

[1 ♂] (1) printed with handwritten inscriptions [here italicized] (on white paper) "Macedonia |

Salonika, 1000' | 1934 | *IV.24 Romei*"; (2) handwritten (on white paper) "17"; (3) printed (on white paper) "BMNH(E) # 662110";

[2 ♀] (1) printed with handwritten inscriptions [here italicized] (on white paper) "Macedonia | Salonika, 1000' | April 26 1935 | Romei"; (2) handwritten (on white paper) "18"; (3) printed (on white paper) "BMNH(E) # 662111";

– Both syntypes with (1) circle printed (on white paper with yellow frame) "Para- | type" and (2) printed (on white paper) "Brit.Mus. | 1939-226."

Additional syntypes (4 ♂♂, 12 ♀♀) in MZSF (KUDRNA, 1983: 22). Infrasubspecific taxon (l. c.: 22).

P. bavius (EVERSMANN, 1832)

casimiri HEMMING, 1932

"*Scolitantides bavius casimiri*, ssp. nov." HEMMING, A. F., 1932 (Supplementary notes on the collection of butterflies made in Greece by General van Straubenzee in 1931. – Entomologist **65** (VIII.1932): 180). Type locality: "Greece, Kalavryta" (l. c.: 181).

Holotype ♂ with labels:

(1) circle printed (on white paper with red frame) "Type"; (2) printed with handwritten inscriptions [here italicized] (on white paper) "Kalavryta | 27.5.1931. | C. van Straubenzee."; (3) printed with handwritten inscriptions [here italicized] (on white paper) "B. M. TYPE | No. Rh. 795. | *S. bavius* | *casimiri* | ♂ *Hem.*"; (4) printed with handwritten inscriptions [here italicized] (on white paper) "Brit.Mus. | 1932-345."; (5) printed (on white paper) "BMNH(E) # 662109"

Additional ♂ paratype in collection VAN STRAUBENZEE (l. c.: 181); present location unknown. A junior subjective synonym of *Lycaena bavius egea* HERRICH-SCHÄFFER, [1852] (KOÇAK, 1979: 313).

Glaucopsyche SCUDDER, 1872

G. arion (LINNAEUS, 1758)

antesion FRUHSTORFER, 1917

"*L.[ycaena] arion antesion* subsp. nova" FRUHSTORFER, H., 1917e (Neue palaearktische Lycaeniden. – Dt. ent. Z. Iris **31** (1-2) (1.VII.1917): 27). Type locality: [Bosnia and Herzegovina]: "Bosnia, besonders von Korinca und dem Maklenpass" (l. c.: 28).

Syntypes 7 ♂♂, 4 ♀♀ with labels:

- [1 ♂] (1) circle printed (on white paper with red frame) "Type | H T"; (2) printed with handwritten inscriptions [here italicized] (on white paper), framed "Bosnia 1903 | Korična | 24.7 | O. Leonhard"; (3) handwritten (on white paper) "selected | as ♂ type of | antesion Fruhst. | (G.T., May, 1941)."; (4) handwritten (on white paper, framed) "arion | antesion | Fruhst."; (5) printed (on white paper) "BMNH(E) # 662112";
- [2 ♂] (1) printed with handwritten inscriptions [here italicized] (on white paper), framed "Bosnia 1904 | Korična | 10.7 | O. Leonhard"; (2) printed (on white paper) "BMNH(E) # 662114";
- [3 ♂] (1) printed with handwritten inscriptions [here italicized] (on white paper), framed "Bosnia 1902 | Prozor | O. Leonhard | Juli"; (2) printed (on white paper) "BMNH(E) # 662115";
- [4 ♂] printed (on white paper) "BMNH(E) # 662116";
- [5 ♂] (1) printed with handwritten inscriptions [here italicized] (on white paper), framed "Bosnia 1904 | Korična | 28.7 | O. Leonhard"; (2) printed (on white paper) "BMNH(E) # 662117";
- [6 ♂] printed (on white paper) "BMNH(E) # 662118";
- [7 ♂] (1) printed with handwritten inscriptions [here italicized] (on white paper), framed "Bosnia 1902 | Maklen-Pass | O. Leonhard | 7.7"; (2) printed (on white paper) "BMNH(E) # 662119";

- [8 ♀] (1) circle printed (on white paper with red frame) "Type | A T"; (2) handwritten (on white paper) "selected | as ♀ type of | antesion Fruhst. | (G.T., May, 1941)."; (3) printed (on white paper) "BMNH(E) # 662113";
- [9 ♀] (1) printed with handwritten inscriptions [here italicized] (on white paper), framed "Bosnia 1904 | Korična | 17.7 | O. Leonhard"; (2) printed (on white paper) "BMNH(E) # 662120";
- [10 ♀] printed (on white paper) "BMNH(E) # 662121";
- [11 ♀] (1) handwritten (on white paper) "antesion | Fruhst."; (2) printed (on white paper) "BMNH(E) # 662122";
- Syntypes 8 and 11 with printed with handwritten inscriptions [here italicized] (on white paper), framed "Bosnia 1902 | Maklen-Pass | O. Leonhard | 17.7"; 3-7 and 9-11 with circle printed (on white paper with yellow frame) "Para- | type"; 4, 6 and 10 with printed (on white paper), framed "Bosnia 1904 | Korična | O. Leonhard"; all syntypes with printed (on white paper) "Fruhstorfer Coll. | B.M. 1933-181"

The originally stated type material consists of "10 ♂♂ 7 ♀♀... Fruhstorfer... noch grössere Serie... Sammlung Leonhard" (l. c.: 28). A different subspecies, endemic for the Balkans.

Plebeius KLUG, 1780

P. pylaon (FISCHER VON WALDHEIM, 1832)

sephirus FRIVALDSZKY, 1835

"*Lycaena* [sic] *sephirus*" FRIVALDSZKY, I., 1835 (Közlések a' Balkány' vidékén tett természettudományi utazásról. A Magyar Tudós Társaság Évkönyvei 2: 269-270, Tab. 7: Fig. 1, 2). Type locality: "Haemeus, Szliven = Sliven (Bulgaria)" (BÁLINT & KERTÉSZ, 1990: 197).

Syntype ♂ with labels:

- (1) circle printed (on white paper with blue frame) "SYN- / TYPE"; (2) handwritten (on white paper, double framed) "Balkanmer | Lycaena | Zephyrus | Friv"; (3) printed (on white paper) "Rothschild | Bequest. / B.M.1939-1."; (4) handwritten (on white paper with red frame) "SYNTYPE | L. sephirus | Friv.", on the back side "des. by | Zs. Balint | 19.VIII.'98"; (5) printed (on white paper) "BMNH(E) # 265360"

Syntype listed by BÁLINT (1999: 58). Currently treated as a subspecies of *Plebeius pylaon* (FISCHER VON WALDHEIM, 1832) (HESSELBARTH, VAN OORSCHOT & WAGENER, 1995: 591).

P. idas (LINNAEUS, 1761)

balcanica ZÜLLICH, 1929

"*Lycaena argyrognomon* Bgstr. f. *balcanica*" ZÜLLICH, R., 1929 (Einige neue Lycaenidenformen aus meiner Sammlung. - Z. österr. Ent. Ver. 14 (5) (15.V.1929): 52). Type locality: "[Bulgaria]: Rilogeberge... Vučija bara in der Herzegowina" (l. c.: 52).

Syntypes 6 ♂♂, 1 ♀ with labels:

- [1 ♂] printed (on white paper) "BMNH(E) # 265270";
- [2 ♂] printed (on white paper) "BMNH(E) # 265271";
- [3 ♂] (1) handwritten (on white paper) "L. balcanica | Züll."; (2) printed (on white paper) "BMNH(E) # 265272"
- [4 ♂] printed (on white paper) "BMNH(E) # 265273";
- [5 ♂] printed (on white paper) "BMNH(E) # 265274";
- [6 ♂] printed (on white paper) "BMNH(E) # 265275";
- [7 ♀] (1) circle printed (on white paper with blue frame) "Para- | lecto- | type"; (2) handwritten (on white paper) "argyrognomen | f. balcanica | Zuell."; (3) printed (on white paper) "BMNH(E) # 265276";

- Syntypes 1-6 with circle printed (on white paper with blue frame) "SYN- | TYPE"; 1 and 4-7 with printed (on white paper) "Rotschild | Bequest | B.M.1939-1."; 2 and 3 with printed (on white paper) "P.P. Graves. | B.M. 1937-665."; all syntypes with (1) printed (on white paper) "BULGARIA OCC. | MON. RILSKI 1400 M | 20 VI.-6 VII 1928 | COLL. ZUELLICH"; (2) printed in red (on white paper with red frame) "Ex Typicalibus | Speciminibus"

Listed by BÁLINT (1999: 17). Additional syntypes in NHMW. A junior primary homonym of *Lycaena balkanica* FREYER, [1844]; replacement name "*Lycaeides argyrognomon baldur* nom. n. pro *Lycaena argyrognomon*, Bergstr. Rasse *balkanica*, Zulich" proposed by HEMMING (1934: 193).

P. anteros (FREYER, [1838])

minorata VERITY, 1938

"*Aricia anteros* Frr.... form *minorata*, nom. nov." VERITY, R., 1938 (Supplement to the "Butterfly races and Zygaenae of Macedonia" - Entomologist's Rec. J. Var. 50 (Suppl.) (9) (15.VII.1938): 5). Type locality: [Greece]: Olympus: "S. Dionisio, 800 m" (l. c.: 5).

Syntypes ♂, ♀ with labels:

- [1 ♂] (1) printed with handwritten inscriptions [here italicized] (on white paper) "Macedonia | Olympus, 2500' | July 16, 1935 | Romei"; (2) handwritten (on white paper) "31"; (3) printed (on white paper) "BMNH(E) # 662228";
- [2 ♀] (1) printed with handwritten inscriptions [here italicized] (on white paper) "Macedonia | Olympus, 2500' | July 167, 1935 | Romei"; (2) handwritten (on white paper) "32"; (3) printed (on white paper) "BMNH(E) # 662229";
- Both syntypes with (1) circle printed (on white paper with yellow frame) "Para- | type"; (2) printed (on white paper) "Brit.Mus. | 1939-226."

Additional syntypes (11 ♂♂) in MZSF (KUDRNA, 1983: 32). Infrasubspecific taxon (l. c.: 32).

minoratissima VERITY, 1938

"*Aricia anteros* Frr.... *minoratissima*, nom. nov." VERITY, R., 1938 (Supplement to the "Butterfly races and Zygaenae of Macedonia" - Entomologist's Rec. J. Var. 50 (Suppl.) (9) (15.VII.1938): 6). Type locality: [Greece]: Olympus: "S. Dionisio, 800 m" (l. c.: 5).

Syntypes ♂, ♀ with labels:

- [1 ♂] (1) handwritten (on white paper) "33"; (2) printed (on white paper) "BMNH(E) # 662230";
- [2 ♀] (1) handwritten (on white paper) "34"; (2) printed (on white paper) "BMNH(E) # 662231";
- Both syntypes with (1) printed with handwritten inscriptions [here italicized] (on white paper) "Macedonia | Olympus, 2500' | Aug. 18, 1935 | Romei"; (2) circle printed (on white paper with yellow frame) "Para- | type"; (3) printed (on white paper) "Brit.Mus. | 1939-226."

Additional syntypes (43 ♂♂, 13 ♀♀) in MZSF (KUDRNA, 1983: 32). Infrasubspecific taxon (l. c.: 32).

Polyommatus LATREILLE, 1804

P. semiargus (ROTTEMBERG, 1775)

parnassia STAUDINGER, 1870

"*Lycaena*... *Semiargus* Rott. (*Acis* S. V.)... v. *Parnassia*" STAUDINGER, O., 1870 (Beitrag zur Lepidopterenfauna Griechenlands. - Horae Soc. ent. ross. 7 (1780): 55). Type locality: [Greece]: "Parnass" (l. c.: 55).

Lectotype ♂ with labels:

- (1) circle printed (on white paper with deep blue frame) "LECTO- | TYPE"; (2) printed (on white

paper) "Greece. | Ex Staudinger."; (3) printed (on white paper) "Godman-Salvin | Coll. 1906.-110."; (4) handwritten (on white paper, framed) "L. parnassia | Greece | Ex Staudinger"; (5) handwritten (on white paper) "Lycaena | parnassia | Stdgr. | Lectotype", on the back side "des. by | ZsBalint | 7.VIII.'98."; (6) printed (on white paper) "BMNH(E) # 264427".

Paralectotype ♀ with labels:

- (1) circle printed (on white paper with light blue frame) "Para- | lecto- | type"; (2) printed (on white paper) "Greece. | Ex Staudinger"; (3) printed (on white paper) "Godman-Salvin | Coll. 1906.-110."; (4) handwritten (on white paper, framed) "L. parnassia | Greece | Ex Staudinger"; (5) printed (on white paper) "BMNH(E) # 264428".

Listed by BÁLINT (1999: 50). Lectotype designated by BÁLINT (1999: 50). Additional type material (7 ♂♂, 6 ♀♀) in ZMHB (NEKRUTENKO, 2000: 298-299). Listed by HESSELBARTH, VAN OORSCHOT & WAGENER (1995: 647) as a junior subjective synonym of *Lycaena helena* STAUDINGER, 1862.

balcanica TUTT, [1909]

Cyaniris semiargus "var. *balcanica*, n. var." TUTT, J. W., [1909] (A Natural History of the British Butterflies... 3 (12): 272). Type locality: originally the exact type locality not stated (TUTT, [1909]: 272: "Bosnia and Bulgaria"). Comparing NICHOLL's paper (NICHOLL, 1900: 64) with the lectotype data label and modern maps the exact locality should be fixed as: Bulgaria: Rila Mts: Levi Iskar, 7-8 miles S Samokov: 4000 ft [UTM grid reference 34TGM08] (see Fig. 4).

Lectotype ♂ with labels:

- (1) printed with handwritten inscriptions [here italicized] (on white paper) "Rilo Dagh, | S. W. Bulgaria. | 4000ft 22 6 99. | H. J. Elwes."; (2) printed (on white paper) "Elwes Coll. |

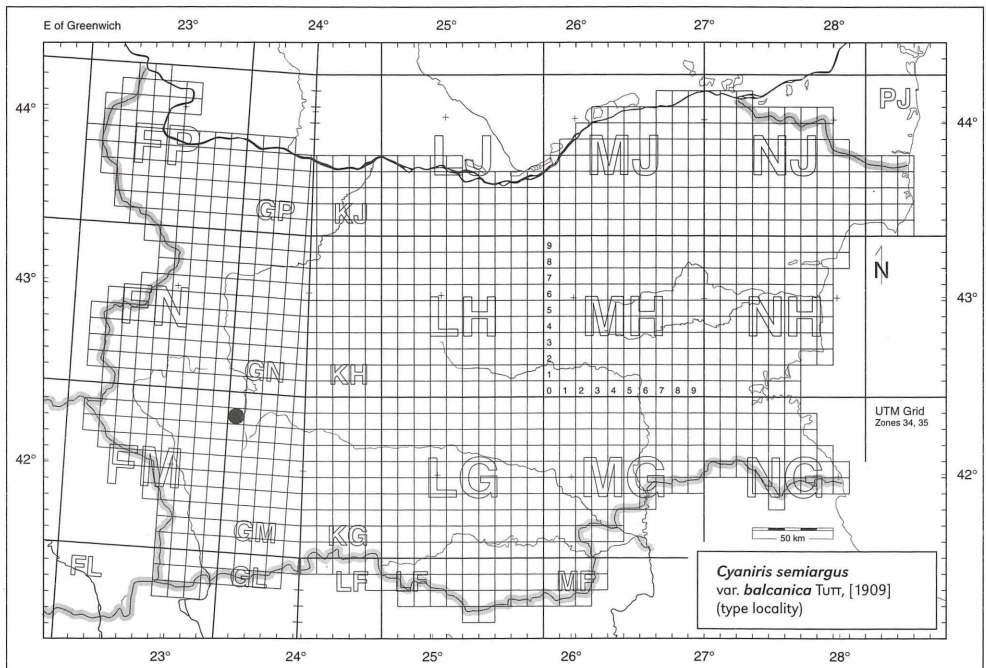


Fig. 4: UTM map of Bulgaria showing the position of the type locality of *Cyaniris semiargus* var. *balcanica* TUTT, [1909].

1902-85"; (3) circle printed (on white paper with light blue frame) "PARA- | LECTO- | TYPE"; (4) circle printed (on white paper with deep blue frame) "LECTO- | TYPE"; (5) handwritten (on white paper with red frame) "LECTOTYPE | C. balcanica | Ttt", on the back side "des. by | Zs. Balint | 11.IX.98"; (6) printed (on white paper) "BMNH(E) # 265786"

Paralectotypes 4 ♂♂, 3 ♀♀ with labels:

- [1 ♂] LN (1) printed (on white paper) "Rilo Dagh, | S. W. Bulgaria. | 000 ft 99. | H. J. Elwes."; (2) printed (on white paper) "Ex Coll. | H. J. Elwes, | 1920."; (3) printed (on white paper) "Joicey | Bequest. | Brit.Mus. | 1934-120."; (4) printed (on white paper) "BMNH(E) # 265785";
- [2 ♂] (1) printed (on white paper) "Bulgaria. | M.de la B. Nicholl. | 1900-53.", on the back side handwritten "L. semiargus | var. parnassus | Star."; (2) printed (on white paper) "BMNH(E) # 265792";
- [3 ♂] (1) printed with handwritten inscriptions [here italicized] (on white paper) "Rilo Dagh, | S. W. Bulgaria. | 5000 ft 3 99. | H. J. Elwes."; (2) printed (on white paper) "BMNH(E) # 265787";
- [4 ♂] (1) printed with handwritten inscriptions [here italicized] (on white paper) "Rilo Dagh, | S. W. Bulgaria. | 7000 ft 3 7 99. | H. J. Elwes."; (2) printed (on white paper) "BMNH(E) # 265788";
- [5 ♀] (1) printed with handwritten inscriptions [here italicized] (on white paper) "Rilo Dagh, | S. W. Bulgaria. | 7.000 ft. 3.7 99. | H. J. Elwes."; (2) printed (on white paper) "BMNH(E) # 265789";
- [6 ♀] (1) printed with handwritten inscriptions [here italicized] (on white paper) "Rilo Dagh, | S. W. Bulgaria. | 5000 ft 26 6 99. | H. J. Elwes."; (2) circle printed (on white paper with light blue frame) "PARA- | LECTO- | TYPE"; (3) printed (on white paper) "BMNH(E) # 265790";
- [7 ♀] (1) printed with handwritten inscriptions [here italicized] (on white paper) "Rilo Dagh, | S. W. Bulgaria. | 6000 ft. 3.7 99. | H. J. Elwes."; (2) printed (on white paper) "BMNH(E) # 265791"; - Paralectotypes 1-5 and 7 with additional circle printed (on white paper with light blue frame) "Para- | lecto- | type"; 3-7 with printed (on white paper) "Elwes Coll. | 1902-85"

Type specimens listed by BÁLINT (1999: 17). Type material originally stated consisted of 6 ♂♂ and 6 ♀♀ (ТУП, [1909]: 273). Lectotype designated by BÁLINT (1999: 17). This taxon was listed by HESSELBARTH, VAN OORSCHOT & WAGENER (1995: 647) as a junior subjective synonym of "*Cyaniris semiargus* (ROTEMBURG, 1775)"

P. escheri (HÜBNER, [1823])

***parnassica* BROWN, 1977**

"*P.[lebicula] escheri parnassica* ssp. n." BROWN, J., 1977 (Subspeciation in the butterflies (Lepidoptera) of the Peloponnesos with notes on adjacent parts of Greece. - Entomologist's Gaz. 28 (3) (26.VIII. 1977): 165-166). Type locality: "Delphi, Greece" (l.c.: 166).

Holotype ♂ with labels:

- (1) printed with handwritten inscriptions [here italicized] (on white paper) "GREECE | Delphi | 13. V. 31. | C.van Straubenzee | B.M. 1943-17"; (2) circle printed (on white paper with red frame) "Holo- | type"; (3) printed (on white paper) "BMNH(E) # 264562"

Paratypes 7 ♂♂ with labels:

- [1] (1) handwritten (on white paper) "Plebicula | escheri ♂. | ssp."; (2) circle printed (on white paper with yellow frame) "PARA- | TYPE"; (3) printed (on white paper) "BMNH(E) # 264569";
- [2] printed (on white paper) "BMNH(E) # 264568";
- [3] printed (on white paper) "BMNH(E) # 264565";
- [4] printed (on white paper) "BMNH(E) # 264564";
- [5] printed (on white paper) "BMNH(E) # 264566";
- [6] printed (on white paper) "BMNH(E) # 264567";
- [7] printed (on white paper) "BMNH(E) # 264563";
- Paratypes 2-7 with circle printed (on white paper with yellow frame) "Para- | type"; all the

paratypes with printed with handwritten inscriptions [here italicized] (on white paper)
 "GREECE | *Delphi* | 13. V. 31. | C.van Straubenzee | B.M. 1943-17".

Types listed by BROWN (1977: 166) and BÁLINT (1999: 50). Treated as a junior subjective synonym of *Agrodiaetus dalmatica* SPEYER, 1882 (HESSELBARTH, VAN OORSCHOT & WAGENER, 1995: 1107).

NYMPHALIDAE

Pararge HÜBNER, [1819]

P. aegeria (LINNAEUS, 1758)

egestas FRUHSTORFER, 1908

"*Pararge aegeria egestas* nov. subspec." FRUHSTORFER, H., 1908b (Neue palaearktische Satyriden. – Int. ent. Z. 2 (2) (11.IV.1908): 9). Type locality: "Dalmatien" (l. c.: 9).

Original description:

***Pararge aegeria egestas* nov. subspec.**

Kleiner, dunkler, ärmer an gelblichen Flecken als Exemplare aus Deutschland, Südtirol und insbesondere aus der Schweiz. Von griechischen Stücken entfernt sich *egestas* durch die mattgelbe, anstatt rotbraune Flügelsprenkelung.

Patria: Dalmatien, 3 ♂♂ in Coll. Fruhstorfer.

Syntype ♂ with labels:

- (1) printed (on red paper) "Type"; (2) printed with handwritten inscriptions [here italicized] (on light brown paper) "*Dalmatien* | Fruhstorfer."; (3) handwritten (on white paper) "*aegeria* | *egestas* | Fruhst."; (4) printed (on white paper) "Fruhstorfer Coll. | B.M. 1937-285."; (5) printed (on white paper) "BMNH(E) # 662205".

Type material originally mentioned consisted of 3 ♂♂ (l. c.: 9). *Pararge aegeria egestas* FRUHSTORFER, 1908 is treated here as a junior subjective synonym of *Satyryx aegeria tircis* GODART, J.-B., 1821 (Histoire naturelle des Lépidoptères ou Papillons de France. Diurnes 1: 163–164; Pl. 8a: Fig. 1 ♀: "*Satyre Tircis*"), **syn. nov.**

Lasiommata WESTWOOD, 1841

L. maera (LINNAEUS, 1758)

atabyris FRUHSTORFER, 1909

"*Pararge maera atabyris* nov. subspec." FRUHSTORFER, H., 1909e (Neue Satyriden. – Int. ent. Z. 3 (24) (11.IX.1909): 133). Type locality: [Greece]: "Rhodos" (l. c.: 133).

Syntype ♂ with labels:

- (1) printed (on red paper) "Type"; (2) handwritten (on white paper) "Rhodos | IV 05"; (3) handwritten (on white paper) "*maera* | *atabyris* | Fruhst."; (4) printed (on white paper) "Fruhstorfer Coll. | B.M. 1937-285."; (5) printed (on white paper) "BMNH(E) # 662206".

Type material mentioned as "unbekannt" ["unknown"] (HESSELBARTH, VAN OORSCHOT & WAGENER, 1995: 788). Type specimens number originally not stated; a possible holotype by monotypy. This taxon is treated as a junior subjective synonym of *Papilio maera maera* LINNAEUS, 1758 (OLIVIER, 1993: 187) and [monotypic!] *Papilio maera* LINNAEUS, 1758 (HESSELBARTH, VAN OORSCHOT & WAGENER, 1995: 788).

***silymbria* FRUHSTORFER, 1909**

"*Pararge maera silymbria* nov. subsp." FRUHSTORFER, H., 1909e (Neue Satyriden. – Int. ent. Z. 3 (24) (11.IX.1909): 134). Type locality: [Croatia]: "Dalmatien, Spalato [= Split]" (l. c.: 134).

Syntype ♀ with labels:

(1) printed (on red paper) "Type"; (2) circle printed (on white paper with red frame) "Type | A T"; (3) printed with handwritten inscriptions [here italicized] (on white paper, framed) "Dalmatia | *Spalato* | 24.05.08. | H. STAUDER [on the left]"; (4) handwritten (on white paper) "maera | silymbria | Fruhst."; (5) printed (on white paper) "Fruhstorfer Coll. | B.M. 1937-285."; (6) printed (on white paper) "BMNH(E) # 662207"

Type material originally consisted of 8 ♂♂, 4 ♀♀ (l. c.: 134). The above mentioned specimen is very similar to the so-called "var. *adrasta*": *Papilio maera adrasta* Hellwig, J. C. L., 1795 (In: Rossius, P., Fauna Etrusca... (Ed. 2) 1: 231), currently treated as an infrasubspecific taxon.

***Coenonympha* HÜBNER, [1819]**

C. tullia (MÜLLER, 1764)

***bosniae* DAVENPORT, 1941**

"*Coenonympha tullia bosniae* subsp. nov." DAVENPORT, D., 1941 (The Butterflies of the Satyrid Genus *Coenonympha*. Bull. Mus. comp. Zool. Harv. 87 (4) (I.1941): 244–245). Type locality: [Bosnia and Herzegovina]: "Lake Jesero, Bosnia" (l. c.: 245).

Syntypes ♂, ♀ with labels:

- [1 ♂] (1) printed with handwritten inscriptions [here italicized] (on white paper) "Det. 1936 | *Davenport* | *C. tullia* | *bosniae* ♂"; (2) printed with handwritten inscriptions [here italicized] (on white paper) "H. T. | ♂ B.M. TYPE | No. Rh. 16722. | *Coenonympha* | *tullia* | *bosniae* *Davenp*"; (3) printed (on white paper) "BMNH(E) # 662203";
- [2 ♀] (1) printed with handwritten inscriptions [here italicized] (on white paper) "Det. 1936 | *Davenport* | *C. tullia* | *bosniae* ♀"; (2) printed with handwritten inscriptions [here italicized] (on white paper) "A. T. | ♀ B.M. TYPE | No. Rh. 16723. | *Coenonympha* | *tullia* | *bosniae* *Davenp*"; (3) printed (on white paper) "BMNH(E) # 662204";
- Both syntypes with (1) circle printed (on white paper with red frame) "Type"; (2) handwritten (on white paper) "Jesero | 25.06.01 | HJElwes"; (3) printed (on white paper) "Elwes Coll. I 1902-85"; (4) printed (on yellow paper) "type"; (5) printed (on white paper) "Brit. Mus. | 1937-344"

Type specimens number of *Coenonympha tullia bosniae* DAVENPORT, 1941 originally not stated and no indication of a selected holotype is given in the original description (cf l.c: 244–245); the 2 specimens here regarded as syntopic.

C. rhodopensis* ELWES, 1900**rhodopensis* ELWES, 1900**

"*C.[oenonympha] tiphon*, var. *rhodopensis*, n. var." ELWES, H. J., 1900 (On the Butterflies of Bulgaria. – Trans. ent. Soc. London 48 (2) (VII.1900): 205). Type locality: Bulgaria: Riia Mts: Levi Iskar, about 12–13 miles S Samokov: 5000 ft [along the fusion of Levi Iskar and Dolna Liva Reka]; UTM grid reference 34TGM07 (ABADJIEV, 2000: 462).

Lectotype ♂ with labels:

(1) printed with handwritten inscriptions [here italicized] (on white paper) "Rilo Dagh, | S. W. Bulgaria. I 5600 ft. 24.6.99. | H. J. Elwes."; (2) printed (on white paper) "Elwes Coll. I 1902-85";

(3) handwritten (on white paper) "*rhodopensis*, 1 Elw. Type ♂"; (4) circle printed (on white paper with red frame) "Type"; (5) circle printed (on white paper with blue frame) "Syn- 1 type"; (6) circle printed (on white paper with deep blue frame) "LECTO- 1 TYPE"; (7) printed with handwritten inscriptions [here italicized] (on white paper) "B.M. TYPE | No.Rh. 6264 | *C. tiphon*, 1 *rhodopensis* 1 ♂ *Elwes*"; (8) printed (on white paper) "SYNTYPE 1 *Coenonympha tiphon* 1 var. *rhodopensis* 1 *Elwes* 1 det. P. Ackery, 1991."; (9) printed (on white paper) "Illustrated in | Abadjiev, S. 1995 | Butterflies of Bulgaria | Vol. 3: Pl. XXXII: Figs 1-3"; (10) printed (on red paper), double framed "LECTOTYPE ♂ | *Coenonympha rhodopensis* | *Elwes*, 1900 | «*C. tiphon*, var. *rhodopensis*, | n. var.» *Elwes*, H. J., 1900 | (On the Butterflies of Bulgaria. - | Trans. ent. Soc. London 48 (2): 205) | [line] | S. Abadjiev design. 2000"; (11) printed (on white paper) "BMNH(E) # 662189"

Paralectotypes 7 ♂♂, 6 ♀♀ with labels:

- [1 ♂] (1) printed with handwritten inscriptions [here italicized] (on white paper) "Rilo Dagħ, | S. W. Bulgaria. | 6000 ft. 3 7 99. | H. J. *Elwes*."; (2) printed with handwritten inscriptions [here italicized] (on white paper) "B.M. TYPE | No.Rh. 6266. | *C. tiphon*, v. | *rhodopensis*, | ♂ *Elwes*."; (3) printed (on white paper) "BMNH(E) # 662190";
- [2 ♂] (1) printed with handwritten inscriptions [here italicized] (on white paper) "B.M. TYPE | No.Rh. 6267. | *C. tiphon*, v. | *rhodopensis*, | ♂ *Elwes*."; (2) printed (on white paper) "BMNH(E) # 662191";
- [3 ♂] (1) printed with handwritten inscriptions [here italicized] (on white paper) "Rilo Dagħ, | S. W. Bulgaria. | 5000 ft. 24.6.99. | H. J. *Elwes*."; (2) printed with handwritten inscriptions [here italicized] (on white paper) "B.M. TYPE | No.Rh. 6269. | *C. tiphon*, v. | *rhodopensis*, | ♂ *Elwes*."; (3) circle printed (on white paper with blue frame) "Para- | lecto- | type"; (4) printed (on white paper) "BMNH(E) # 662192";
- [4 ♂] (1) printed with handwritten inscriptions [here italicized] (on white paper) "Rilo Dagħ, | S. W. Bulgaria. | 5000 ft. 6.7.99. | H. J. *Elwes*."; (2) printed with handwritten inscriptions [here italicized] (on white paper) "B.M. TYPE | No.Rh. 6270. | *C. tiphon*, v. | *rhodopensis*, | ♂ *Elwes*."; (3) printed (on white paper) "BMNH(E) # 662193";
- [5 ♂] (1) printed with handwritten inscriptions [here italicized] (on white paper) "Rilo Dagħ, | S. W. Bulgaria. | 5000 ft. 25.6.99. | H. J. *Elwes*."; (2) printed with handwritten inscriptions [here italicized] (on white paper) "B.M. TYPE | No.Rh. 6271 | *C. tiphon*, v. | *rhodopensis* | ♂ *Elwes*"; (3) printed (on white paper) "BMNH(E) # 662194";
- [6 ♂] (1) printed with handwritten inscriptions [here italicized] (on white paper) "Rilo Dagħ, | S. W. Bulgaria. | 5000 ft. 4.7 99. | H. J. *Elwes*."; (2) printed with handwritten inscriptions [here italicized] (on white paper) "B.M. TYPE | No.Rh. 6272 | *C. tiphon*, v. | *rhodopensis* | ♂ *Elwes*"; (3) printed (on white paper) "BMNH(E) # 662195";
- [7 ♂] (1) printed with handwritten inscriptions [here italicized] (on white paper) "Rilo Dagħ, | S. W. Bulgaria. | 5000 ft. 26.6 99. | H. J. *Elwes*."; (2) printed with handwritten inscriptions [here italicized] (on white paper) "B.M. TYPE | No.Rh. 6268. | *C. tiphon*, v. | *rhodopensis*, | ♂ *Elwes*."; (3) printed (on red paper), double framed "PARALECTOTYPE ♂ | *Coenonympha rhodopensis* | *Elwes*, 1900 | «*C. tiphon*, var. *rhodopensis*, | n. var.» *Elwes*, H. J., 1900 | (On the Butterflies of Bulgaria. - | Trans. ent. Soc. London 48 (2): 205) | [line] | S. Abadjiev design. 2001"; (4) printed (on white paper) "BMNH(E) # 662202";
- [8 ♀] (1) circle printed (on white paper with red frame) "Type"; (2) printed with handwritten inscriptions [here italicized] (on white paper) "B.M. TYPE | No.Rh. 6265 | *C. tiphon*, v. | *rhodopensis*, | ♀ *Elwes*"; (3) printed (on white paper) "Illustrated in | Abadjiev, S. 1995 | Butterflies of Bulgaria | Vol. 3: Pl. XXXII: Figs 7-9"; (4) printed (on white paper) "BMNH(E) # 662196";
- [9 ♀] (1) printed with handwritten inscriptions [here italicized] (on white paper) "B.M. TYPE | No.Rh. 6273 | *C. tiphon*, v. | *rhodopensis*, | ♀ *Elwes*"; (2) printed (on white paper) "Illustrated in | Abadjiev, S. 1995 | Butterflies of Bulgaria | Vol. 3: Pl. XXXII: Figs 4-6"; (3) printed (on white paper) "BMNH(E) # 662197";
- [10 ♀] (1) printed with handwritten inscriptions [here italicized] (on white paper) "Rilo Dagħ, | S. W.

- Bulgaria. | 5000 ft. 3.7.99. | H. J. Elwes.”; (2) printed with handwritten inscriptions [here italicized] (on white paper) “B.M. TYPE | No.Rh. 6274 | *C. tiphon*, | v. *rhodopensis* | ♀ *Elwes*”; (3) printed (on white paper) “BMNH(E) # 662198”;
- [11 ♀] (1) printed with handwritten inscriptions [here italicized] (on white paper) “B.M. TYPE | No.Rh. 6275 | *C. tiphon*, v. | *rhodopensis* | ♀ *Elwes*.”; (2) printed (on white paper) “BMNH(E) # 662199”;
- [12 ♀] (1) printed with handwritten inscriptions [here italicized] (on white paper) “B.M. TYPE | No.Rh. 6276 | *C. tiphon*, v. | *rhodopensis*, | ♀ *Elwes*”; (2) printed (on white paper) “BMNH(E) # 662200”;
- [13 ♀] (1) printed with handwritten inscriptions [here italicized] (on white paper) “Rilo Dagh, | S. W. Bulgaria. | 5000 ft. 24.6.99. | H. J. Elwes.”; (2) printed with handwritten inscriptions [here italicized] (on white paper) “B.M. TYPE | No.Rh. 6277 | *C. tiphon*, v. | *rhodopensis*, | ♀ *Elwes*”; (3) printed (on white paper) “BMNH(E) # 662201”;
- paralectotypes 1–7 and 9–13 with circle printed (on white paper with yellow frame) “Co- | type”; 1–6 and 9–12 with circle printed (on white paper with blue frame) “SYN- | TYPE”; 1, 2, 4–6 and 8–13 with circle printed (on white paper with blue frame) “PARA- | LECTO- | TYPE”; 2, 11 and 12 with printed with handwritten inscriptions [here italicized] (on white paper) “Rilo Dagh, | S. W. Bulgaria. | 6000 ft. 12.7.99. | H. J. Elwes.”; 7, 8 and 13 with circle printed (on white paper with blue frame) “Syn- | type”; 8 and 9 with printed with handwritten inscriptions [here italicized] (on white paper) “Rilo Dagh, | S. W. Bulgaria. | 5000 ft. 24.6.99. | H. J. Elwes.”; all the paralectotypes with (1) printed (on white paper) “Elwes Coll. | 1902-85”; (2) printed (on white paper) “SYNTYPE | *Coenonympha tiphon* | var. *rhodopensis* | Elwes | det. P. Ackery, 1991.” and (except 7) (3) printed (on red paper), double framed “PARA-LECTOTYPE ♂ [♀ respectively] | *Coenonympha rhodopensis* | Elwes, 1900 | «*C. tiphon*, var. *rhodopensis*, | n. var.» Elwes, H. J., 1900 | (On the Butterflies of Bulgaria. – | Trans. ent. Soc. London 48 (2): 205) | [line] | S. Abadjiev design. 2000”

Type material originally not stated. Lectotype illustrated in colour by АВАДЖИЕВ (1995: Pl. XXXII: Figs 1–3) and designated by АВАДЖИЕВ (2000: 462–463; 465: Fig. 2). Paralectotypes 8 and 9 illustrated by АВАДЖИЕВ (1995: Pl. XXXII: Figs 4–9). Treated as a different species.

Hyponephele MUSCHAMP, 1915

H. lycaon (ROTTEMBERG, 1775)

salona FRUHSTORFER, 1909

“*Epinephele lycaon salona* nov. subspec.” FRUHSTORFER, H., 1909d (Neue Palaearkten. – Int. ent. Z. 3 (21) (21.VIII.1909): 120). Type locality: “Bosnia, Prenj” (l. c.: 120).

Syntype ♂ with labels:

- (1) printed (on red paper) “Type”; (2) printed with handwritten inscriptions [here italicized] (on white paper, framed) “Wettl | Prenj | 15.7.08”; (3) printed (on white paper) “Fruhstorfer Coll. | B.M. 1937-285”; (4) handwritten (on white paper, framed) “*rhamnusia* | *salona* Fruhst.”; (5) printed (on white paper) “BMNH(E) # 662175”

Type specimens number originally not stated; a possible holotype by monotypy.

Proterebeia ROOS & ARNSCHIED, 1980

P. afra (FABRICIUS, 1787)

pyramus DE LOUKER & DILS, 1987

“*Proterebeia phegea pyramus* n. ssp.” DE LOUKER, S. & J. DILS, 1987 (The occurrence [sic] of *Proterebeia*

phegea Borkhausen in Greece...). – *Phegea* 15 (3) (1.VII.1987): 157–160). Type locality: “Greece, province of Kozani, 600 m” (l. c.: 159).

Paratype ♂ with labels:

- (1) circle printed (on white paper with yellow frame) “Para- | type”; (2) printed (on white paper) “02.05.87 600M | GREECE | NOMOS KOZANIS | LEG. J. DILS”; (3) printed (on red paper) “PARATYPE | P. PHEGEA BORKH. | SSP. PYRAMUS | DE LOUKER–DILS”; (4) handwritten (on white paper) “Brit.Mus. | 1988-272”; (5) printed (on white paper) “BMNH(E) # 662140”

Additional types: holotype ♂ ITZA, paratypes in collections DILS, DE LOUKER, ITZA (l. c.: 159).

Erebia DALMAN, 1816

E. euryale (ESPER, [1805])

syrmia FRUHSTORFER, 1909

“*Erebia adyte syrmia* nov. subspec.” FRUHSTORFER, H., 1909e (Neue Satyriden. – Int. ent. Z. 3 (24) (11.IX.1909): 134). Type locality: “Bosnien, Trebevic” (l. c.: 134).

Syntype ♂ with labels:

- (1) printed (on red paper) “Type”; (2) printed with handwritten inscriptions [here italicized] (on white paper, framed) “Wettl | Trebevic | 5.7.05.”; (3) handwritten (on white paper, framed) “euryale | syrmia | Fruhst.”; (4) printed (on white paper) “Fruhstorfer Coll. | B.M. 1937-285.”; (5) printed (on white paper) “BMNH(E) # 662154”

Type specimens number originally not stated. Subsequently treated by WARREN (1936: 61) as an infraspecific taxon and junior subjective synonym of *Erebia euryale euryale* (ESPER, [1805]).

E. orientalis ELWES, 1900

orientalis ELWES, 1900

“*Erebia epiphron*, var. *orientalis*, n. var.?” ELWES, H. J., 1900 (On the Butterflies of Bulgaria. Trans. ent. Soc. London 48 (2) (VII.1900): 199–200). Type locality: Bulgaria: Rila Mts: Maritsa Valley: 6000 ft [about 1969 m; just above the fusion of Tiha Maritsa and Prava Maritsa rivers] [UTM grid reference 34TGM17] (ABADJIEV, in print).

Lectotype ♀ with labels:

- (1) printed with handwritten inscriptions [here italicized] (on white paper) “Rilo Dagh, | S. W. Bulgaria. | 6000 ft. 12.7.99. | H. J. Elwes.”; (2) printed (on white paper) “Elwes Coll. | 1902-85”; (3) printed (on white paper) “Photographed | for B. C. S. Warren.”; (4) printed (on white paper) “Illustrated in | Abadjiev, S. 1995 | Butterflies of Bulgaria | Vol. 3: Pl. XXXI: Figs 6–8”; (5) handwritten (on white paper) “*orientalis*, | Elw. Type ♀”; (6) circle printed (on white paper with red frame) “Type”; (7) circle printed (on white paper with deep blue frame) “LECTO- | TYPE”; (8) circle printed (on white paper with blue frame) “Syn- | type”; (9) printed with handwritten inscriptions [here italicized] (on white paper) “B.M. TYPE | No.Rh. 6279 | *E. epiphron* | *orientalis*, | ♀ Elwes.”; (10) printed (on white paper) “SYNTYPE | *Erebia epiphron* | var. *orientalis* | Elwes. | det. P. Ackery, 1991.”; (11) printed (on red paper), double framed “LECTOTYPE ♀ | *Erebia orientalis* Elwes, 1900 | *Erebia epiphron*, var. *orientalis*, | n. var. Elwes, H. J., 1900 | (On the Butterflies of Bulgaria. – | Trans. ent. Soc. London 48 (2): 199) | [line] | label attachment S. Abadjiev 2001”; (12) printed (on white paper) “BMNH(E) # 662126”

Paralectotypes 6 ♂♂, 3 ♀♀ with labels:

- [1 ♂] (1) circle printed (on white paper with red frame) “Type”; (2) handwritten (on white paper)

- "*orientalis*, | Elw. Type ♂"; (3) printed with handwritten inscriptions [here italicized] (on white paper) "B.M. TYPE | No.Rh. 6278 | *E. epiphron* | *orientalis*, | ♂ *Elwes.*"; (4) printed (on white paper) "Illustrated in | Abadjiev, S. 1995 | Butterflies of Bulgaria | Vol. 3: Pl. XXXI: Figs 4, 5"; (5) printed (on white paper) "BMNH(E) # 662127";
- [2 ♂] (1) printed with handwritten inscriptions [here italicized] (on white paper) "B.M. TYPE | No.Rh. 6280 | *E. epiphron* | *orientalis*, | ♂ *Elwes.*"; (2) printed (on white paper) "BMNH(E) # 662128";
- [3 ♂] (1) printed with handwritten inscriptions [here italicized] (on white paper) "B.M. TYPE | No.Rh. 6281 | *E. epiphron* | *orientalis*, | ♂ *Elwes.*"; (2) printed (on white paper) "Photographed | for B. C. S. Warren."; (3) printed (on white paper) "Illustrated in | Abadjiev, S. 1995 | Butterflies of Bulgaria | Vol. 3: Pl. XXXI: Figs 1-3"; (4) printed (on white paper) "BMNH(E) # 662129";
- [4 ♂] (1) printed with handwritten inscriptions [here italicized] (on white paper) "B.M. TYPE | No.Rh. 6282 | *E. epiphron* | *orientalis*, | ♂ *Elwes.*"; (1) printed (on white paper) "BMNH(E) # 662130";
- [5 ♂] (1) printed with handwritten inscriptions [here italicized] (on white paper) "Elwes Coll. | 1902-85 | *Rilo Dagh* | 6500 | *July 1900*"; (2) printed with handwritten inscriptions [here italicized] (on white paper) "B.M. TYPE | No.Rh. 6283 | *E. epiphron* | *orientalis*, | ♂ *Elwes.*"; (3) printed (on white paper) "BMNH(E) # 662131";
- [6 ♂] (1) printed with handwritten inscriptions [here italicized] (on white paper) "S W Bulgaria. | M. de la B. Nicholl. | 1900-53 | *Ayrandere Valley*. | 7000 ft."; (2) printed with handwritten inscriptions [here italicized] (on white paper) "B.M. TYPE | No.Rh. 6284 | *E. epiphron* | *orientalis*, | ♂ *Elwes.*"; (3) printed (on white paper) "BMNH(E) # 662132";
- [7 ♀] (1) printed with handwritten inscriptions [here italicized] (on white paper) "B.M. TYPE | No.Rh. 6285 | *E. epiphron* | *orientalis*, | ♀ *Elwes.*"; (2) printed (on white paper) "BMNH(E) # 662133";
- [8 ♀] (1) printed with handwritten inscriptions [here italicized] (on white paper) "B.M. TYPE | No.Rh. 6286 | *E. epiphron* | *orientalis*, | ♀ *Elwes.*"; (2) printed (on white paper) "Illustrated in | Abadjiev, S. 1995 | Butterflies of Bulgaria | Vol. 3: Pl. XXXI: Figs 9, 10"; (3) circle printed (on white paper with blue frame) "Syn- | type"; (4) printed (on white paper) "BMNH(E) # 662134";
- [9 ♀] (1) printed with handwritten inscriptions [here italicized] (on white paper) "Bulgaria. | M. de la B. Nicholl. | 1900-53 | *Marica*. | 6500 ft. | 10:VI 99" [The month in the date written here (10 June 1899) is apparently erroneous. It must be July. On 10 June 1899 Mrs Nicholl collected down in the valley of Rilska Reka (cf Nicholl, 1900: 33)]; (2) printed with handwritten inscriptions [here italicized] (on white paper) "Received as | *Erebia epiphron*, | *Knoch*. | from *M^{rs}. Nicholl.*, | F. A. H."; (3) printed (on white paper) "♀"; (4) printed with handwritten inscriptions [here italicized] (on white paper) "B.M. TYPE | No.Rh. 6287 | *E. epiphron* | *orientalis*, | ♀ *Elwes.*"; (5) printed (on white paper) "BMNH(E) # 662135";
- Paralectotypes 1-5, 7 and 8 with printed (on white paper) "SYNTYPE | *Erebia epiphron* | var. *orientalis* | *Elwes.* | det. P. Ackery, 1991."; 1-5 and 7 with circle printed (on white paper with blue frame) "SYN- | TYPE"; 1-4, 7 and 8 with (1) printed with handwritten inscriptions [here italicized] (on white paper) "Rilo Dagh, | S. W. Bulgaria. | 6000 ft. 12.7.99. | H. J. Elwes."; (2) printed (on white paper) "Elwes Coll. | 1902-85"; 1, 3-5 and 7-9 with circle printed (on white paper with blue frame) "PARA- | LECTO- | TYPE"; 2-9 with circle printed (on white paper with yellow frame) "Co- | type"; 2 and 6 with circle printed (on white paper with blue frame) "Para- | lecto- | type"; 6 and 9 with handwritten (on white paper) "*Erebia rhodopensis* | Nicholl? Original | description not | traced."; all the paralectotypes with printed (on red paper), double framed "PARALECTOTYPE ♂ [♀ respectively] | *Erebia orientalis* *Elwes*, 1900 | *Erebia epiphron*, var. *orientalis*, | n. var. *Elwes*, H. J., 1900 | (On the Butterflies of Bulgaria. - | Trans. ent. Soc. London 48 (2): 199) | [line] | label attachment S. Abadjiev 2001"

Type material originally not stated. Lectotype designated (ICZN, 1999: Article 74.4) and illustrated by WARREN (1936: 113, Pl. 68: Figs 798, 799, 806). Later depicted in colour by АВАДЖИЕВ (1995: Pl. XXXI: Figs 6-8). Elevated to species rank by ARNSCHIED & ROOS (1977: 110).

E. medusa ([DENIS & SCHIFFERMÜLLER, 1775])*euphrasia* FRUHSTORFER, 1917

"*E.[rebia] medusa... euphrasia* subsp. nova" FRUHSTORFER, H., 1917f (Altes und Neues über Erebiën. – Dt. ent. Z. Iris 31 (1/2) (1.VII.1917): 44). Type locality (see lectotype data label below): Bulgaria: Rila Mts: Tschamkoriija [= Borovets]; UTM grid reference 34TGM18 (see Fig. 5).

Lectotype ♂ (**here designated**) with labels:

- (1) printed with handwritten inscriptions [here italicized] (on white paper) "Bulg.Tschamkoriija | 5. | M. Hilf 1911 | Coll. O. Leonhard"; (2) handwritten (on white paper, framed) "euphrasia | Fruhst."; (3) printed (on red paper) "Type"; (4) printed (on white paper) "Fruhstorfer Coll. | B.M. 1937-285."; (5) printed (on white paper) "BMNH(E) # 662150"; (6) printed (on red paper), double framed "LECTOTYPE ♂ | *Erebia medusa euphrasia* | Fruhstorfer, 1917 | (Altes und Neues über Erebiën. – | Dt. ent. Z. Iris 31 (1/2): 44) | [line] | Dr S. Abadjiev design. 2002".

Paralectotype ♀ with labels:

- (1) printed with handwritten inscriptions [here italicized] (on white paper) "Bulg.Tschamkoriija | 5. | M. Hilf 1911 | Coll. O. Leonhard"; (2) printed (on red paper) "Type"; (3) printed (on white paper) "Fruhstorfer Coll. | B.M. 1937-285." (4) printed (on white paper) "BMNH(E) # 662151"; (5) printed (on red paper), double framed "PARALECTOTYPE ♀ | *Erebia medusa euphrasia* | Fruhstorfer, 1917 | (Altes und Neues über Erebiën. – | Dt. ent. Z. Iris 31 (1/2): 44) | [line] | Dr S. Abadjiev design. 2002".

Type material mentioned as "unbekannt" (HESSELBARTH, VAN OORSCHOT & WAGENER, 1995: 855). Lectotype designation here was done for the stability of nomenclature. Treated as a different subspecies (WARREN, 1936: 187; HESSELBARTH, VAN OORSCHOT & WAGENER, 1995: 855).

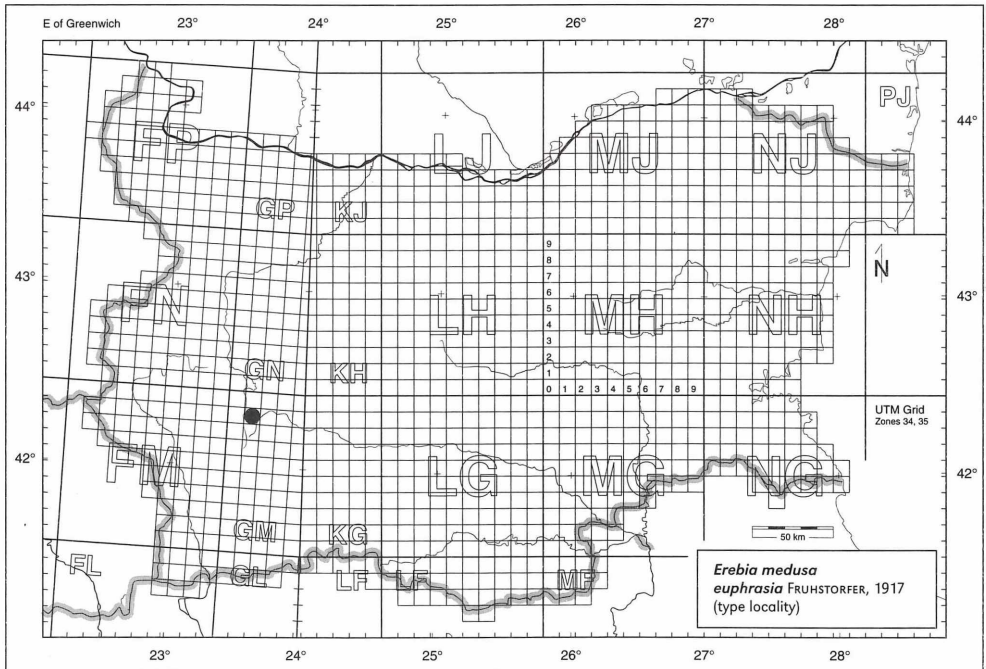


Fig. 5: UTM map of Bulgaria showing the position of the type locality of *Erebia medusa euphrasia* FRUHSTORFER, 1917.

***narona* FRUHSTORFER, 1917**

"*E.[rebia] medusa... narona* subsp. nova" FRUHSTORFER, H., 1917f (Altes und Neues über Erebie. – Dt. ent. Z. Iris 31 (1/2) (1.VII.1917): 45). Type locality (cf lectotype label below): Bosnia and Herzegovina: Maklen [Makljen] Pass; UTM grid reference 33TYJ05 (see Fig. 6).

Original description:

In Bosnien begegnen wir einer Diminutivrasse, *narona* subsp. nova, die sich ihrerseits sofort wieder in zwei Niveauformen scheidet lässt, jene der Niederung mit relativ reich gelb umringelten Augen (Trebevic) und die von mir als Namenstype hier eingeführte Höhenbewohnerin vom Maklenpass und Koricna, die sich von *hippomedusa* aber immer noch durch grössere Ozellen und namentlich fahler und breiter ausgeflossene gelbbraune Flecken beider Flügel differenziert.

Die Unterseite der ♀♀ erscheint viel heller grau als bei *hippomedusa*.

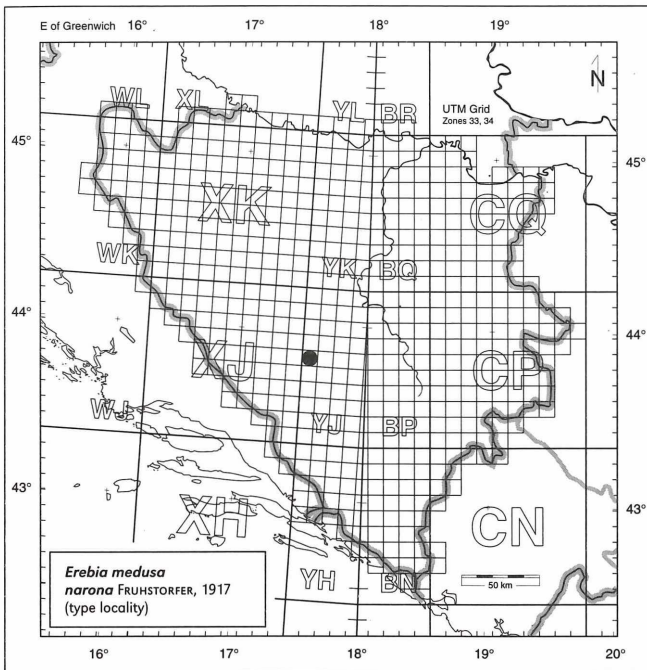


Fig. 6: UTM map of Bosnia and Herzegovina showing the position of the type locality of *Erebia medusa narona* FRUHSTORFER, 1917.

Lectotype ♀ (here designated) with labels:

- (1) printed with handwritten inscriptions [here italicized] (on white paper, framed) "*Bosnia 1902 | Maklen-Pass | O. Leonhard | 27.6.*"; (2) printed (on red paper) "*Type*"; (3) printed (on white paper) "*Fruhstorfer Coll. | B.M. 1937-285.*"; (4) printed (on white paper) "*BMNH(E) # 662153*"; (5) printed (on red paper), double framed "*LECTOTYPE ♀ | Erebia medusa narona | Fruhstorfer, 1917 | (Altes und Neues über Erebie. – | Dt. ent. Z. Iris 31 (1/2): 45) | [line] | Dr S. Abadjiev design. 2002*"

Paralectotype ♂ with labels:

(1) printed with handwritten inscriptions [here italicized] (on white paper) "Bosnia 1904 | Koriča | 6.6. | O. Leonhard"; (2) printed (on red paper) "Type"; (3) printed (on white paper) "Fruhstorfer Coll. | B.M. 1937-285."; (4) handwritten (on white paper, framed) "medusa | narona | Fruhst."; (5) printed (on white paper) "BMNH(E) # 662152"; (6) printed (on red paper), double framed "PARALECTOTYPE ♂ | *Erebia medusa narona* | Fruhstorfer, 1917 | (Altes und Neues über Erebien. - | Dt. ent. Z. Iris 31 (1/2): 45) | [line] | Dr S. Abadjiev design. 2002"

Lectotype designation here was done for the stability of nomenclature. Using the "Principle of the First Reviser" (ICZN, 1999: Article 24) *Erebia medusa narona* FRUHSTORFER, 1917 is a junior subjective synonym of *E. medusa euphrasia* FRUHSTORFER, 1917, **syn. nov.**

E. alberganus (PRUNNER, 1798)

phorcys FREYER, [1836]

"*Hipparchia*... 333. Pap. *Phorcys*" FREYER, C. F., [1836] (Neuere Beiträge zur Schmetterlingskunde... 3 (33): 4; Tab. 193: Fig. 2). Type locality: "Bulgaria, central Stara Planina" (BÁLINT & OLIVIER, 2001: 179).

Original description (see also Colour plate I: Fig. 10):

Gen. VIII. *Hipparchia*.

333. P a p. P h o r c y s.

Tab. 193. Fig. 2.

Im ersten Augenblick und wenn man die Unterseite dieses Schmetterlings nicht vergleicht, kann und wird ihn jeder Entomolog als Abart von Pap. *Ceto* halten. Er kommt ihm sowohl in Gestalt, als Größe und auch, auf der Oberseite in der Zeichnung und Farbe, ungemein nahe und könnte allerdings als eine Lokalvarietät gelten. Doch unterscheidet ihn von *Ceto* oben die längern rothbraunen Flecken zwischen den Sehnen der Flügel und die in diesen Flecken befindlichen schwarzen kleinen Augen, welche bei diesem Schmetterling eine deutliche glänzendweiße Pupille führen, die in der Regel bei *Ceto* vermisst wird. Die Unterseite ist indessen noch mehr verschieden, namentlich auf den Hinterflügeln. Während *Ceto* hier runde rothbraune Augen, mit kleinen schwarzen Punkten in der Mitte, führt, besitzt *P. Phorcys* diese Augen, und zwar die obern 3 länglich, die leßtern 3 rund, herzförmig, von blaßgelber Farbe wie das Weib von *P. Pharte*, mit bloß etwas röthlichem Anflug, und, in diesen Augen die schwarzen Punkte ebenfalls mit weißen Pupillen, welsch leßtere vorzüglich auch in den 3 Augen der Oberflügel, deutlich sich zeigen. Ich glaube nicht zu irren, wenn ich diese *Hipparchia* von *Ceto* trenne, und ihr einen andern, obgleich solcher sehr nahe verwandten Namen, beizulegen mir erlaube.

Es wurde dieser Falter ebenfalls durch Hr. Dr. Trevašsky in der europäischen Türkei aufgefunden und mir in zwei guten Exemplaren mitgetheilt. Er fliegt im July.

Lectotype ♂ (here designated) [without abdomen and left antenna] with labels:

(1) handwritten (on yellow paper upperside) "Phorcys"; (2) handwritten (on light blue paper) "Ceto var. | Phorcys | Fr. 193, 2."; (3) printed (on white paper) "Zell. Coll. | 1884."; (4) printed (on white paper) "BMNH(E) # 662141"; (5) printed (on red paper), double framed "LECTOTYPE ♂ | *Erebia alberganus phorcys* | (Freyer, [1836]) | «*Hipparchia*... 333. Pap. *Phorcys*» | Freyer, C. F., [1836] | (Neuere Beiträge zur Schmetterlingskunde... | 3: 4; Tab. 193: Fig. 2) | [line] | Dr S. Abadjiev design. 2002"

Lectotype designation here was done for the stability of nomenclature. Treated as a different subspecies, endemic for Stara Planina Range.

E. rhodopensis NICHOLL, 1900*rhodopensis* NICHOLL, 1900

"variety (*rhodopensis*) of *E. gorgone*" NICHOLL, M. DE LA B., 1900 (Bulgarian butterflies. – Entomologist's Rec. J. Var. 12 (3) (15.III.1900): 67). Type locality (see lectotype data label below): Bulgaria: Rila: Airandere [= Chavcha]: 6500 ft; UTM grid ref. 34TGM27 (see Fig. 7).

Original description:

Then I was fortunate enough to take an *Erebia* which greatly puzzled both Mr. Elwes and me, and we almost hoped that it might prove to be a new species. It is, however, stated to be only a local variety (*rhodopensis*) of *E. gorgone*, with which species the genitalia, as examined by Dr. Staudinger and Mr. Edwards, correspond exactly.

I append a description of this butterfly, of which we managed to secure six specimens, all males, between July 11th and July 18th. The females were not, probably, then out, and should be looked for a week later. All our specimens were taken in the highest part of the Marica valley, and in the Airandere, which is a valley running parallel to it on the east, at an elevation of 6000ft. or more. Its flight does not resemble that of *gorgone*, it is a more sluggish insect, and squarer in the wings; nor does it haunt rocks as *gorgone* does—we took all our specimens amongst the juniper bushes that clothe the stony slopes, near streams or boggy hollows.

Expanse 1.50in. Wings dark brown, with broad, sharply defined, rusty band, crossed by rays on forewings and hindwings, and a very faint rusty patch adjoining the costa of forewing. Two apical eyes, large, white-pupilled, and conspicuous; one of my specimens has a third, very minute one. There is also a small eye placed rather below the middle of the rusty band of forewing. In the band of the hindwing are several small white-pupilled eyes. Underside forewing entirely rust colour, with the band of the upperside repeated distinctly in a fainter shade. Eyes as above. Underside hindwings dark rusty brown, with two distinctly marked paler bands mottled with grey. Eyes of upper side repeated.

Lectotype ♂ (here designated) [without abdomen] with labels:

- (1) printed with handwritten inscriptions [here italicized] (on white paper) "*Airandere* | S.W. Bulgaria. | 65000 [sic] ft 17.7.99. | H. J. Elwes."; (2) printed in red (on white paper) "TYPE."; (3) printed (on white paper) "Elwes Coll. | 1902-85"; (4) circle printed (on white paper with red frame) "Type", on the back side handwritten "*Erebia* | *gorgone* | var. | *rhodopensis* | Elwes"; (5) printed with handwritten inscriptions [here italicized] (on white paper) "B.M. TYPE | No.Rh. 3556 | *Erebia* | *gorgone*, var. | *rhodopensis* | ♂ *Elwes*."; (6) printed with handwritten inscriptions [here italicized] (on red paper, double framed) "LECTOTYPE ♂ | *Erebia* | *rhodopensis* | [line] Dr S. Abadjiev design. 2001"; (7) printed (on white paper) "BMNH(E) # 662124"

Paralectotype ♂ with labels:

- (1) printed with handwritten inscriptions [here italicized] (on white paper) "*Airandere* | S.W. Bulgaria. | 65000 [sic] ft 17.7.99. | H. J. Elwes."; (2) printed in red (on white paper) "TYPE."; (3) printed (on white paper) "Elwes Coll. | 1902-85"; (4) printed with handwritten inscriptions [here italicized] (on white paper) "B.M. TYPE | No.Rh. 3557 | *Erebia* | *gorgone*, var. | *rhodopensis* | ♂ *Elwes*."; (5) printed with handwritten inscriptions [here italicized] (on red paper, double framed) "PARALECTOTYPE ♂ | *Erebia* | *rhodopensis* | [line] Dr S. Abadjiev design. 2001"; (6) printed (on white paper) "Photographed | for B.C.S. Warren."; (7) printed (on white paper) "BMNH(E) # 662125"

The type material is collected as follows: Marica [Marichini Ezera; UTM grid reference 34TGM17]: 11.VII.1899 – 1 ♂: NICHOLL; 12.VII.1899 – 1 ♂: ELWES (NICHOLL, 1900: 67); Airandere [Chavcha]: 6000 ft

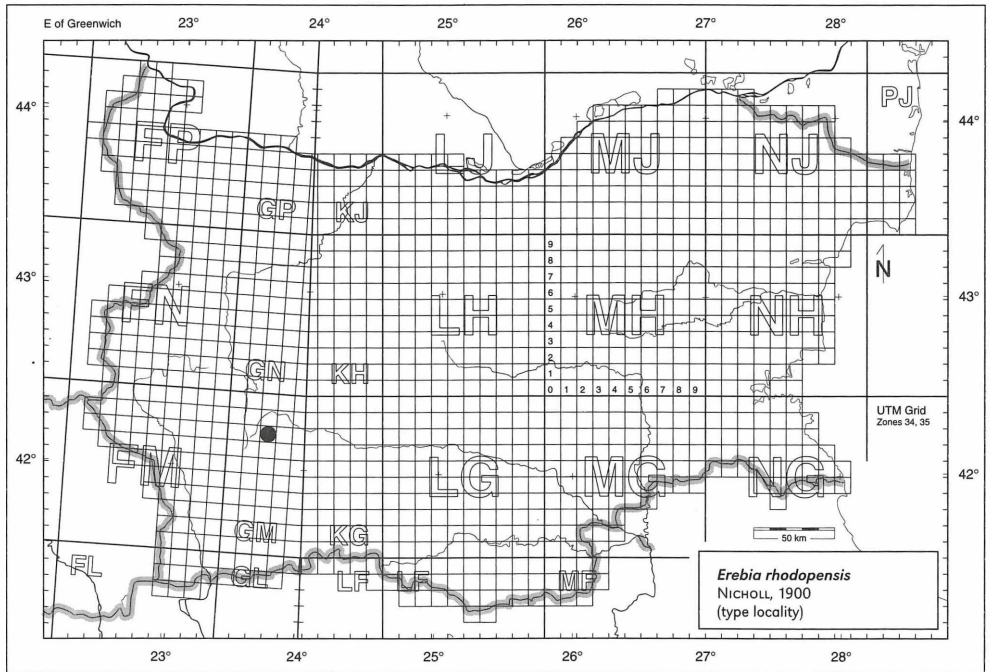


Fig. 7: UTM map of Bulgaria showing the position of the type locality of *Erebia rhodopensis* NICHOLL, 1900.

[500 ft difference with the data labels above]: 14.VII.1899 – 1 ♂: NICHOLL (NICHOLL, 1900: 67, 68); 18[a day difference with the data labels above].VII.1899 – 3 ♂♂: ELWES (NICHOLL, 1900: 67, 68). Lectotype designation here was done for the stability of nomenclature. A different species, endemic for the Balkan Peninsula.

sharsta HIGGINS, 1965

"*Erebia aethiopellus sharsta* s.sp. nov." HIGGINS, L. G., 1965 (Five New Butterflies. – Entomologist 98 (I.1965): 11). Type locality: "Yugoslav Macedonia, Schar Planina" (l.c: 12).

Holotype ♂ with labels:

- (1) printed (on white paper) "MACEDONIA: | Shar Planina. | 6-7500 ft. | 8-10.VII.1958. | L.G.Higgins. | B.M.1958-379."; (2) circle printed (on white paper with red frame) "Holo- | type"; (3) printed with handwritten inscriptions [here italicized] (on white paper) "*H.T.* | ♂ B.M. TYPE | No.Rh.18034 | *Erebia sharsta* | Higgins"; (4) handwritten (on white paper) "*E. sharsta* | Holotype | L. HIGGINS | ♂.1964"; (5) handwritten (on white paper) "*i.litt.*"; (6) printed with handwritten inscriptions [here italicized] (on white paper) "*Erebia* | *aethiopellus* | *sharsta* Higgins | C.R. Smith det. 1986 | HOLOTYPE"; (7) printed (on white paper) "BMNH(E) # 662234".

Paratypes 6 ♂♂, 1 ♀ with labels:

- [1 ♂] (1) handwritten in red (on white paper) "1427"; (2) printed (on white paper) "BMNH(E) # 662235";
- [2 ♂] printed (on white paper) "BMNH(E) # 662236";

- [3 ♂] printed (on white paper) "BMNH(E) # 662237";
 [4 ♂] printed (on white paper) "BMNH(E) # 662238";
 [5 ♂] printed (on white paper) "BMNH(E) # 662239";
 [6 ♂] (1) printed with handwritten inscriptions [here italicized] (on white paper) "FIELD GUIDE | Plate 16 | Fig. 14"; (2) printed (on white paper) "BMNH(E) # 662240";
 [7 ♀] (1) printed with handwritten inscriptions [here italicized] (on white paper) "AT. | ♀ B.M. TYPE | No.Rh.18035 | *Erebia sharsta* | Higgins."; (2) handwritten (on white paper) "E. sharsta | allotype | ♀.L. HIGGINS | 1964"; (3) handwritten (on white paper) "i.litt."; (4) printed (on white paper) "BMNH(E) # 662241";
 – All the paratypes with (1) printed (on white paper) "MACEDONIA: | Shar Planina. | 6-7500 ft. | 8-10.VII.1958. | L.G.Higgins. | B.M.1958-379."; (2) circle printed (on white paper with yellow frame) "Para- | type"; (3) printed with handwritten inscriptions [here italicized] (on white paper) "*Erebia* | *aethiopsellus* | *sharsta* Higgins | C.R. Smith det. 1986 | PARATYPE"

The originally mentioned type material comprised 1 more male (l.c. 12). Types listed by SMITH (1988: 1931). Temporarily, the taxon *sharsta* HIGGINS, 1965 is treated here as subspecies of *Erebia rhodopensis* NICHOLL, 1900.

E. cassioides (REINER & HOHENWARTH, 1792)

macedonica BURESCH, 1918

"[*Erebia tyndarus*] *macedonica* nov. subsp." BURESCH, I., 1918 (Beitrag zur Lepidopterenfauna des Piringebirges (Pirin-Planina) in Mazedonien. – Z. wiss. InsektBiol. 14 (9/10) (25.III.1918): 226–228, Taf. II: Fig. 10–13). Type locality: [Bulgaria]: "südlichen Teilen des Piringebirges, im Papas-Gjol-Tale" (l.c.: 227).

Syntypes ♂, ♀ with labels:

- [1 ♂] (1) printed with handwritten inscriptions [here italicized] (on purple paper) "SLIDE NO: | 759 [in red]"; (2) printed (on white paper) "BMNH(E) # 662136";
 [2 ♀] (1) printed (on white paper) "Photographed for | B.C.S. Warren."; (2) printed (on white paper) "BMNH(E) # 662137";
 – Both syntypes with (1) printed with handwritten inscriptions [here italicized] (on white paper) "Pirin-Pl. 2450 m. | Papas-Gjol 16.VII. | Dr lw. Buresch. 915."; (2) handwritten (on white paper) "Bulgaria. | Brit. Mus. 1925-111."; (3) printed with handwritten inscriptions [here italicized] (on red paper, double framed) "SYNTYPE ♂ [♀ respectively] | *Erebia* | *tyndarus* | *macedonica* | [line] Dr S. Abadjiev design. 2001"

Additional type material in NMNH. Treated as a different subspecies, endemic for Pirin Mountains, Bulgaria (ABADJIEV, 2001b: 57).

E. ottomana HERRICH-SCHÄFFER, [1847]

durmitorensis WARREN, 1932

"*E.[rebia] ottomana*... Race *durmitorensis*, nov." WARREN, B. C. S., 1932 (Notes on Erebiid species. – Entomologist's Rec. J. Var. 44 (15.XII.1932): 166). Type locality: [Yugoslavia: Montenegro]: "Durmitor" (l.c. 166).

Lectotype ♂ (here designated) with labels:

- (1) printed with handwritten inscriptions [here italicized] (on white paper) "MONTEN. | Durmitor | VII.30 | O. HOLIK"; (2) printed (on orange paper) "HOLOTYPE."; (3) printed (on light beige paper) "Monograph specimen; | B.C.S. Warren."; (4) printed with handwritten inscriptions [here italicized] (on white paper) "*Erebia ottomana* | *durmitorensis* Warren. | det. R.I.Vane-Wright, 1979. | ♂ SYNTYPE."; (5) printed (on white paper) "B.C.S. Warren | Bequest

| B.M. 1979–101"; (6) printed (on white paper) "BMNH(E) # 662214"; (7) printed (on red paper), double framed "LECTOTYPE ♂ | *Erebia ottomana* | *durmitorensis* Warren, 1932 | (Notes on Erebiid Species. – | Entomologist's Rec. J. Var. 44: 166) | [line] | Dr S. Abadjiev design. 2002"

Paralectotypes 5 ♂♂ with labels:

- [1] printed (on white paper) "BMNH(E) # 662215";
 - [2] printed (on white paper) "BMNH(E) # 662216";
 - [3] printed (on white paper) "BMNH(E) # 662217";
 - [4] printed (on white paper) "BMNH(E) # 662218";
 - [5] printed (on white paper) "BMNH(E) # 662219";
- Paralectotypes 1–3 with printed with handwritten inscriptions [here italicized] (on white paper) "MONTEN. | Durmitor | *Vil.30* | O. HOLIK"; 4–5 with printed with handwritten inscriptions [here italicized] (on white paper) "MONTEN. | Durmitor | *18.7.30* | O. HOLIK"; all with (1) printed (on light yellow paper) "PARATYPE."; (2) printed (on light beige paper) "Monograph specimen; | B.C.S. Warren."; (3) printed with handwritten inscriptions [here italicized] (on white paper) "*Erebia ottomana* | *durmitorensis* Warren. | det. R.I.Vane-Wright, 1979. | ♂ SYNTYPE."; (4) printed (on white paper) "B.C.S. Warren | Bequest | B.M. 1979–101"; (5) printed (on red paper), double framed "PARALECTOTYPE ♂ | *Erebia ottomana* | *durmitorensis* Warren, 1932 | (Notes on Erebiid Species. – | Entomologist's Rec. J. Var. 44: 166) | [line] | Dr S. Abadjiev design. 2002"

Type specimens of WARREN bear labels "HOLOTYPE" or "PARATYPE", but no indication of a selected holotype is given in the original description (cf l.c.: 166). Lectotype designation here was done for the stability of nomenclature. Listed as syntypes by VANE-WRIGHT & ACKERY (1981: 113).

bureschi WARREN, 1933

"*E.[rebia] ottomana* ssp. *bureschi* nov." WARREN, B. C. S., 1933 (Notes on Erebiid species. – Entomologist's Rec. J. Var. 45 (3) (15.III.1933): 40). Type locality: [Bulgaria]: "Alibutush [= Slavyanka]" (l.c.: 41).

Lectotype ♂ with labels:

- (1) printed with handwritten inscriptions [here italicized] (on white paper) "*Ali Botusch*. | *Bulg:Macedonia* | *30.VII.30*. | Ex I.Buresch."; (2) printed (on orange paper) "HOLOTYPE."; (3) printed with handwritten inscriptions [here italicized] (on light yellow paper) "Specimen figured: | Monog:of Gn:*Erebia*. | B.C.S.Warren. | Fig. 1296 & -"; (4) printed with handwritten inscriptions [here italicized] (on white paper) "*Erebia ottomana* | *bureschi* Warren. | det. R.I.Vane-Wright, 1979. | ♂ SYNTYPE."; (5) printed (on white paper) "B.C.S. Warren | Bequest | B.M. 1979–101"; (6) printed (on white paper) "BMNH(E) # 662208"; (7) printed (on red paper), double framed "LECTOTYPE ♂ | *Erebia ottomana* | *bureschi* Warren, 1933 | (Notes on Erebiid Species. | Entomologist's Rec. J. Var. 45: 40) | [line] | label attachment Dr S. Abadjiev 2002"

Paralectotypes 4 ♂♂, 1 ♀ with labels:

- [1 ♂] printed (on white paper) "BMNH(E) # 662210";
 - [2 ♂] printed (on white paper) "BMNH(E) # 662211";
 - [3 ♂] (1) printed with handwritten inscriptions [here italicized] (on light yellow paper) "Specimen figured: | Monog:of Gn:*Erebia*. | B.C.S.Warren. | Fig. 1302 & -"; (2) printed (on white paper) "BMNH(E) # 662212";
 - [4 ♂] printed (on white paper) "BMNH(E) # 662213";
 - [5 ♀] (1) handwritten (on white paper) "*Ali Botusch*. | *Bulg:Macedonia* | *30.VII.30*. | Ex I.Buresch"; (2) printed (on orange paper) "ALLOTYPE."; (3) printed with handwritten inscriptions [here italicized] (on light yellow paper) "Specimen figured: | Monog:of Gn:*Erebia*. | B.C.S.Warren. | Fig. 1297 & -"; (4) printed (on white paper) "BMNH(E) # 662209";
- Paralectotypes 1–4 with (1) printed with handwritten inscriptions [here italicized] (on white

paper) "*Ali Botusch. | Bulg:Macedonia | 30.VII.30. | Ex I.Buresch.*"; (2) printed (on light yellow paper) "PARATYPE."; 1-2 and 4 with printed (on light beige paper) "Monograph specimen; | B.C.S. Warren."; all with (1) printed with handwritten inscriptions [here italicized] (on white paper) "*Erebia ottomana | bureschi Warren. | det. R.I.Vane-Wright, 1979. | ♂ [♀ respectively] SYNTYPE.*"; (2) printed (on white paper) "B.C.S. Warren | Bequest | B.M. 1979-101"; (3) printed (on red paper), double framed "PARALECTOTYPE ♂ [♀ respectively] | *Erebia ottomana | bureschi Warren, 1933 | (Notes on Erebiid Species. - | Entomologist's Rec. J. Var. 45: 40) | [line] | label attachment Dr S. Abadjiev 2002"*

Type material originally not stated. Type specimens of WARREN bear labels "HOLOTYPE", "ALLOTYPE" or "PARATYPE", but no indication of a selected holotype is given in the original description. Lectotype designated (ICZN, 1999: Article 74.4) and illustrated by WARREN (1936: Pl. 89: Fig. 1296). Listed as syntypes by VANE-WRIGHT & ACKERY (1981: 112).

E. pronoe (ESPER, [1780])

zyxuta FRUHSTORFER, 1920

"*E.[rebia] pronoe zyxuta* subsp. nova" FRUHSTORFER, H., 1920 (Altes und Neues über Erebien. – Arch. Naturgesch. 84 (1918) A (7) (IV.1920): 98). Type locality: "Bulgarien, Rhodope [East Rila Mts; reliable records concerning the occurrence of *E. pronoe* in the Rhodopi Mts absent]... Rila Planina" (l. c.: 99).

Syntypes ♂, ♀ with labels:

- [1 ♂] (1) printed with handwritten inscriptions [here italicized] (on white paper) "Bulg.Rhodope Geb. | 18.8. | M. Hilf 1911 | Coll. O. Leonhard"; (2) handwritten (on white paper, framed) "prnoë | zyxuta | Fruhst."; (3) printed (on white paper) "BMNH(E) # 662142";
 [2 ♀] (1) printed with handwritten inscriptions [here italicized] (on white paper) "Bulg.Rhodope Geb. | 15.8. | M. Hilf 1911 | Coll. O. Leonhard"; (2) printed (on white paper) "BMNH(E) # 662143";
 Both syntypes with (1) printed (on red paper) "Type"; (2) printed (on white paper) "Fruhstorfer Coll. | B.M. 1937-285."

The name *Erebia pronoe zyxuta* FRUHSTORFER, 1920 is a junior primary homonym of *Erebia afer zyxuta* FRUHSTORFER, 1918; a replacement name "*E.[rebia] pronoe... ssp. fruhstorferi* nov. pro *zyxuta*, Frhst." has been proposed by WARREN (1933: 41). *Erebia pronoe fruhstorferi* WARREN, 1933 is treated as a different subspecies, endemic for the Balkans (WARREN, 1936: 314).

E. melas (HERBST, 1796)

leonhardi FRUHSTORFER, 1918

"*E.[rebia] melas leonhardi* subsp. nova" FRUHSTORFER, H., 1918a (*Erebia alecto* Rediviva. – Arch. Naturgesch. 82 (1916) A (7) (I.1918): 131; Taf. I: Fig. 3 [♂], 4 [♀]). Type locality: [Croatia]: "Velebit, Ostraria" (l. c.: 132).

Syntypes ♂, ♀ with labels:

- [1 ♂] (1) handwritten (on white paper, framed) "melas | leonhardi | Frhst."; (2) printed (on white paper) "BMNH(E) # 662144";
 [2 ♀] printed (on white paper) "BMNH(E) # 662145";
 – Both syntypes with (1) printed (on white paper) "Velebit.Ostraria | M. Hilf 1910 | Coll. O. Leonhard"; (2) printed (on red paper) "Type"; (3) printed (on white paper) "Fruhstorfer Coll. | B.M. 1937-285."

Originally mentioned type material: "3 ♂♀... Eine große Serie in der Sammlung Leonhard" (l. c.: 132). Treated as a different subspecies, endemic for the Balkans (WARREN, 1936: 350).

nanos FRUHSTORFER, 1918

"*Erebia melas nanos* subsp. nova" FRUHSTORFER, H., 1918a (*Erebia alecto* Rediviva. – Arch. Naturgesch. 82 (1916) A (7) (I.1918): 132; Taf. I: Fig. 1 [♂], 2 [♀]). Type locality: [Slovenia]: "Krain, Berg Nanos" (l. c.: 132).

Syntypes ♂, ♀ with labels:

- [1 ♂] (1) handwritten (on white paper, framed) "melas | nanos | Frhst."; (2) printed (on white paper) "BMNH(E) # 662148";
- [2 ♀] printed (on white paper) "BMNH(E) # 662149";
 - Both syntypes with (1) printed with handwritten inscriptions [here italicized] (on white paper, framed) "*Krain | Nanos | Coll. O. Leonhard*"; (2) printed (on red paper) "Type"; (3) printed (on white paper) "Fruhstorfer Coll. | B.M. 1937-285."

The originally mentioned type material consisted of "3 ♂♂, 2 ♀♀ Coll. Fruhstorfer" (l. c.: 132). Although it was treated as an infrasubspecific taxon (WARREN, 1936: 351) the name is available.

acoris FRUHSTORFER, 1918

"*Erebia melas acoris* subsp. nova" FRUHSTORFER, H., 1918a (*Erebia alecto* Rediviva. – Arch. Naturgesch. 82 (1916) A (7) (I.1918): 132; Taf. I: Fig. 7 [♂], 8 [♀]; Taf. II: Fig. 1). Type locality: "Bulgarien, Rhodope [East Rila Mts]... Rila Planina 1900 m, Kaloverski Balkan 1700 m" (l. c.: 132).

Syntypes ♂, ♀ with labels:

- [1 ♂] (1) handwritten (on white paper, framed) "melas | acoris | Frhst."; (2) printed (on white paper) "BMNH(E) # 662146";
- [2 ♀] printed (on white paper) "BMNH(E) # 662147";
 - Both syntypes with (1) printed with handwritten inscriptions [here italicized] (on white paper) "Bulg. Rhodope Geb. | 18.8. | M. Hilf 1911 | Coll. O. Leonhard"; (2) printed (on red paper) "Type"; (3) printed (on white paper) "Fruhstorfer Coll. | B.M. 1937-285."

Except for "2 ♂♀" from "Rhodope", the rest of the type material originally not stated (l. c.: 132). Although it was treated as an infrasubspecific taxon (WARREN, 1936: 352) the name *acoris* FRUHSTORFER, 1918 is available.

E. oeme (HÜBNER, [1804])

vetulonia FRUHSTORFER, 1918

"*E[rebia] oeme vetulonia* subsp. nova" FRUHSTORFER, H., 1918b (Monographische Uebersicht alter und neuer *Erebia*-Formen. – Dt. ent. Z. Iris 31 (1917) (3/4) (I.1918): 93–94). Type locality: "Bosnien, vom Trebevic bei Serajewo... Maklenpass... Montenegro, Durmitor" (l. c.: 94).

Syntype ♂ with labels:

- (1) printed (on red paper) "Type"; (2) printed with handwritten inscriptions [here italicized] (on white paper, framed) "Wettl Trebević | 5.7.08."; (3) handwritten (on white paper, framed) "oeme | vetulonia | Frhst."; (4) printed (on white paper) "Fruhstorfer Coll. | B.M. 1937-285."; (5) printed (on white paper) "BMNH(E) # 662155"

The originally mentioned type material consisted of "6 ♂♂, 1 ♀" "vom Trebevic", "8 ♂♂" from "Maklenpass" "Coll. Fruhst." and "eine grosse Serie Coll. Leonhard" (l. c.: 93). Treated as an infrasubspecific taxon (WARREN, 1936: 360), but the name is available.

Melanargia MEIGEN, [1828]*M. galathea* (LINNAEUS, 1758)*syntelia* FRUHSTORFER, 1917

"*Melanargia galathea... syntelia* subsp. nova" FRUHSTORFER, H., 1917a (Neue Rhopaloceren aus der Sammlung Leonhard. – Arch. Naturgesch. **82** (1916) A (2) (l.1917): 20; Taf. I: Fig. 8♂, 9♀). Type locality: originally "Occupationsländer... Banat" (l. c.: 20) the exact type locality not mentioned.

Syntypes ♂, ♀ with labels:

- [1 ♂] (1) handwritten (on white paper, framed) "galathea | syntelia | Fruhst."; (2) printed (on white paper) "BMNH(E) # 662156";
 [2 ♀] printed (on white paper) "BMNH(E) # 662157";
 – Both syntypes with (1) printed with handwritten inscriptions [here italicized] (on white paper) "*Dalmatien* | Fruhstorfer"; (2) printed (on red paper) "Type"; (3) printed (on white paper) "Fruhstorfer Coll. | B.M. 1937-285."

Description repeated by FRUHSTORFER (1917b: 5). Treated as a junior subjective synonym of *Melanargia galathea satnia* FRUHSTORFER, 1917 (HESSELBARTH, VAN OORSCHOT & WAGENER, 1995: 866).

tenebrosa FRUHSTORFER, 1917

"*Melanargia galathea... tenebrosa* subsp. nova" FRUHSTORFER, H., 1917a (Neue Rhopaloceren aus der Sammlung Leonhard. – Arch. Naturgesch. **82** (1916) A (2) (l.1917): 20; Taf. I: Fig. 7♂). Type locality: [Slovenia]: "in der Umgebung von Laibach [= Ljubljana] in Krain" (l. c.: 20).

Syntypes ♂, ♀ with labels:

- [1 ♂] (1) handwritten (on white paper, framed) "galathea | tenebrosa | Fruhst."; (2) printed (on white paper) "BMNH(E) # 662158";
 [2 ♀] printed (on white paper) "BMNH(E) # 662159";
 – Both syntypes with (1) printed (on white paper), double framed "Krain | Fruhstorfer"; (2) printed (on red paper) "Type"; (3) printed (on white paper) "Fruhstorfer Coll. | B.M. 1937-285."

Description repeated by FRUHSTORFER (1917b: 6); type material mentioned: "Laibach 6 ♂♂ 12 ♀♀, Novi und Zengg... 1 ♂ 3 ♀♀ Koll. Fruhstorfer" (l. c.: 6).

Satyrus LATREILLE, 1810*S. ferula* (FABRICIUS, 1793)*penketia* FRUHSTORFER, 1908

"*Satyrus actaea penketia* nov. subsp." FRUHSTORFER, H., 1908a (Zwei neue Lokalrassen von *Satyrus actaea* Esp. – Int. ent. Z. **1** (46) (15.II.1908): 351). Type locality: [Greece]: "Taygetos" (l. c.: 351).

Syntype ♂ with labels:

- (1) printed (on red paper) "Type"; (2) printed (on white paper, framed) "Griechenland | Fruhstorfer"; (3) handwritten (on light brown transparent paper) "Taygetos | Cordula"; (4) printed (on white paper, framed) "ferula | penketia | Fruhst."; (5) printed (on white paper) "Fruhstorfer Coll. | B.M. 1937-285"; (6) printed (on white paper) "BMNH(E) # 662160"

Type material originally mentioned: "Taygetos, Juli 1902 Dr. Krüper leg., 3 ♂♂ Coll. Fruhst." (l. c.: 351). One of the many subspecies of *Satyrus ferula* (FABRICIUS, 1793) described; the exact taxonomic status remains unclear; a revision is necessary.

serva FRUHSTORFER, 1909

"*Minois... actaea serva* nov. subspec." FRUHSTORFER, H., 1909c (Neues über *Satyrus cordula*. – Int. ent. Z. 3 (16) (17.VII.1909): 88). Type locality: "Dalmatien, Bosnien, Herzegowina" (l. c.: 88).

Syntype ♀ with labels:

- (1) printed (on red paper) "Type"; (2) handwritten (on white paper) "Gravosa | Dalm."; (3) handwritten (on white paper, framed) "serva | Fruhst."; (4) printed (on white paper) "Fruhstorfer Coll. I B.M. 1937-285"; (5) printed (on white paper) "BMNH(E) # 662161"

The type material originally mentioned consisted of "12 ♂♂ ♀♀... Coll. Fruhstorfer" (l. c.: 88). Additional subspecies of *Satyrus ferula* described; the exact taxonomic status remains unclear; needs further revision.

Hipparchia [FABRICIUS in ILLIGER], 1807 [cf TAEGER & GAEDIKE, 2001]

H. syriaca (STAUDINGER, 1871)

attikana FRUHSTORFER, 1907

"*Satyrus hermione attikana* nov. subsp." FRUHSTORFER, H., 1907 (Neue Lokalarassen von paläarktischen Rhopaloceren. – Int. ent. Z. 1 (29) (12.X.1907): 215). Type locality: [Greece]: "Attika" (l. c.: 215).

Syntype ♂ [without abdomen] with labels:

- (1) circle printed (on white paper with blue frame) "SYN- | TYPE"; (2) printed (on red paper) "Type"; (3) printed (on white paper), framed "Griechenland | Fruhstorfer"; (4) printed (on white paper) "Fruhstorfer Coll. | B.M. 1937-285"; (5) handwritten (on white paper) "Burnabat Kanagol | 10.7.02"; (6) printed in red with handwritten inscriptions in black [here italicized] (on white paper) "B.M.(N.H.) | Rhopalocera | Slide No. | *11,588*"; (7) printed with handwritten inscriptions [here italicized] (on white paper) "SYNTYPE | *Satyrus hermione* | *attikana Fruhstorfer* | det. P.R.Ackery 1977"; (8) handwritten (on white paper, framed) "syriaca | attikana | Fruhst."; (9) printed (on white paper) "BMNH(E) # 662169"

Syntype listed by KUDRNA (1977: 40). This taxon is treated as a junior subjective synonym of *Satyrus hermione syriaca* STAUDINGER, 1871 (KUDRNA, 1977: 37).

serula FRUHSTORFER, 1908

"*Eumenis fagi serrula* nov. subspec." FRUHSTORFER, H., 1908c (Neue europäische Satyriden. – Ent. Z. 22 (30) (24.X.1908): 121). Type locality: [Croatia]: "Dalmatien, Ragusa, Gravosa" (l. c.: 121).

Syntypes ♂ [without abdomen], ♀ with labels:

- [1 ♂] (1) printed in red with handwritten inscriptions in black [italicized] (on white paper) "B.M.(N.H.) | Rhopalocera | Slide No. | *11,587*"; (2) handwritten (on white paper, framed) "syriaca | serula | Fruhst."; (3) printed (on white paper) "BMNH(E) # 662170";
 [2 ♀] printed (on white paper) "BMNH(E) # 662171";
 – Both syntypes with additional (1) printed with handwritten inscriptions [here italicized] (on light brown paper) "*Dalmatia* | Fruhstorfer"; (2) printed (on white paper) "Fruhstorfer Coll. | B.M. 1937-285"; (3) circle printed (on white paper with blue frame) "SYN- | TYPE"; (4) printed (on red paper) "Type"; (5) printed with handwritten inscriptions [italicized] (on white paper) "SYNTYPE | *Eumenis fagi* | *serrula Fruhstorfer* | det. P.R.Ackery 1977."

Syntypes listed by KUDRNA (1977: 40). Treated as a junior subjective synonym of *Satyrus hermione syriaca* STAUDINGER, 1871 (KUDRNA, 1977: 37).

H. aristaeus (BONELLI, 1826)**senthes** FRUHSTORFER, 1908

"*Eumenis (Satyrus)...* *semele senthes* nova subspec." FRUHSTORFER, H., 1908b (Neue palaearktische Satyriden. - Int. ent. Z. 2 (2) (11.IV.1908): 10). Type locality: [Greece]: "Taygetos" (l. c.: 10).

Lectotype ♂ [without abdomen] with labels:

(1) circle printed (on white paper with deep blue frame) "LECTO- | TYPE"; (2) printed (on white paper), framed "Griechenland | Fruhstorfer"; (3) printed (on white paper) "Fruhstorfer Coll. | B.M. 1937-285"; (4) handwritten (on light brown transparent paper) "Taygetos"; (5) printed (on red paper) "Type"; (6) printed with handwritten inscriptions [here italicized] (on white paper) "LECTOTYPE | *Eumenis semele* | *senthes Fruhstorfer* | det. P.R.Ackery 1977"; (7) handwritten in red (on white paper) "2639"; (8) printed with handwritten inscriptions [here italicized] (on white paper) "Androconia | 061"; (9) handwritten (on white paper) "Eumenis semele | senthes | Fruhstorfer 1908 | [line] O. Kudrna det."; (10) handwritten (on white paper, framed) "semele | senthes | Fruhst."; (11) printed (on red paper) "Eumenis (Satyrus) semele senthes | Fruhstorfer, 1908 | LECTOTYPE design. Kudrna (1977: 116) | illustr. Olivier & Coutsis (1997: Plate 2, fig. 7)"; (12) printed (on white paper) "BMNH(E) # 662167"

Paralectotype ♀ with labels:

(1) circle printed (on white paper with light blue frame) "PARA- | LECTO- | TYPE"; (2) printed with handwritten inscriptions [here italicized] (on light brown paper) "*Griechenland* | Fruhstorfer.", on the back side "*Krüper*"; (3) printed (on white paper) "Fruhstorfer Coll. | B.M. 1937-285"; (4) printed (on red paper) "Type"; (5) printed with handwritten inscriptions [here italicized] (on white paper) "PARALECTOTYPE | *Eumenis semele* | *senthes Fruhstorfer* | det. P.R.Ackery 1977"; (6) printed (on red paper) "Eumenis (Satyrus) semele senthes | Fruhstorfer, 1908 | LECTOTYPE design. Kudrna (1977: 116) | illustr. Olivier & Coutsis (1997: Plate 2, fig. 8)"; (7) printed (on white paper) "BMNH(E) # 662168"

Lectotype designated by KUDRNA (1977: 116) and illustrated by OLIVIER & COUTSIS (1997: Pl. 2: Fig. 7). Paralectotype illustrated by OLIVIER & COUTSIS (1997: Pl. 2: Fig. 8). Treated as a different subspecies of *Hipparchia algirica* (OBERTHÜR, 1876) (KUDRNA, 1977: 113); later of *Hipparchia aristaeus* (BONELLI, 1826) (HESSELBARTH, VAN OORSCHOT & WAGENER, 1995: 900) and as a different species, *Hipparchia senthes* (FRUHSTORFER, 1908) (OLIVIER & COUTSIS, 1997: 204).

H. statilinus (HUFNAGEL, 1766)**pisistratus** FRUHSTORFER, 1908

"*E.[umenis] statilinus pisistratus* nov. subspec." FRUHSTORFER, H., 1908d (Lepidopterologisches Pele-Mele. VIII. Neue paläarktische Satyriden-Rassen. Ent. Z. 22 (31) (31.X.1908): 128). Type locality: "Istrien, Serbien" (l. c.: 128).

Syntypes ♂ [without abdomen], ♀ with labels:

[1 ♂] (1) circle printed (on white paper with yellow frame) "Para- | type"; (2) printed in red with handwritten inscriptions in black [here italicized] (on white paper) "B.M.(N.H.) | Rhopalocera | Slide No. | 11,574"; (3) printed with handwritten inscriptions [here italicized] (on white paper) "SYNTYPE | *Eumenis statilinus* | *pisistratus* | *Fruhstorfer* | det. P.R.Ackery 1977"; (4) handwritten (on white paper, framed) "statilinus | pisistratus | Fruhst."; (5) printed (on white paper) "BMNH(E) # 662172";

[2 ♀] (1) circle printed (on white paper with red frame) "Type | A T"; (2) printed (on red paper) "Type"; (3) printed with handwritten inscriptions [here italicized] (on white paper) "SYNTYPE | *Eumenis statilinus* | *pisistratus* | *Fruhstorfer* | det. P.R.Ackery 1977"; (4) printed (on white paper) "BMNH(E) # 662173";

Both syntypes with (1) printed (on white paper) "Istrien"; (2) printed (on white paper)

"Fruhstorfer Coll. | B.M. 1937-285"; (3) circle printed (on white paper with blue frame) "SYN- | TYPE".

Syntypes listed by KUDRNA (1977: 123). Treated as a junior subjective synonym of *Papilio statilinus* HUFNAGEL, 1766 (KUDRNA, 1977: 118).

vettius FRUHSTORFER, 1908

"*E.[umenis] statilinus vettius* nov. subspec." FRUHSTORFER, H., 1908d (Lepidopterologisches Pele-Mele. VIII. Neue paläarktische Satyriden-Rassen. – Ent. Z. 22 (31) (31.X.1908): 128). Type locality: "Griechenland" (l. c.: 128).

Holotype ♂ with labels:

- (1) circle printed (on white paper with blue frame) "SYN- | TYPE"; (2) printed (on red paper) "Type"; (3) handwritten (on white paper) "allionia ♂ | Griechenland | 79. Krüper"; (4) printed (on white paper) "Fruhstorfer Coll. | B.M. 1937-285"; (5) printed in red with handwritten inscriptions in black [here italicized] (on white paper) "B.M.(N.H.) | Rhopalocera | Slide No. | 11,575"; (6) printed with handwritten inscriptions [here italicized] (on white paper) "HOLOTYPE | *Eumenis statilinus* | *vettius Fruhstorfer* | det. P.R.Ackery 1977."; (7) handwritten (on white paper, framed) "statilinus | vettius Fruhst."; (8) printed (on white paper) "BMNH(E) # 662174".

Holotype (by implication) listed by KUDRNA (1977: 123). Treated as a junior subjective synonym of *Papilio statilinus* HUFNAGEL, 1766 (KUDRNA, 1977: 118).

Brintesia FRUHSTORFER, [1911]

B. circe (FABRICIUS, 1775)

pannonia FRUHSTORFER, 1917

"*Satyrus circe pannonia* subspec. nova" FRUHSTORFER, H., 1917c (Neue paläarktische Rhopaloceren. – Ent. Z. 30 (25) (3.III.1917): 99). Type locality: "Zengg, aus dem Litorale von Kroatien" (l. c.: 99).

Syntype ♂ with labels:

- (1) printed (on red paper) "Type"; (2) printed (on white paper) "Zengg | Ullrich | 1913.VI."; (3) handwritten (on white paper, framed) "circe | pannonia | Frhst."; (4) printed (on white paper) "Fruhstorfer Coll. | B.M. 1937-285"; (5) printed (on white paper) "BMNH(E) # 662164".

The exact type specimens number originally not stated. The taxonomic status of *Brintesia circe pannonia* (FRUHSTORFER, 1917) is not clarified; needs further revision.

Chazara MOORE, 1893

C. briseis (LINNAEUS, 1764)

saga FRUHSTORFER, 1909

"*Eumenis briseis saga* nov. subspec." FRUHSTORFER, H., 1909a (Neue paläarktische Satyriden. – Ent. Z. 22 (49) (6.III.1909): 211). Type locality: "Umgebung von Görz, Dalmatien" (l. c.: 211).

Syntype ♀ with labels:

- (1) printed (on red paper) "Type"; (2) printed with handwritten inscriptions [here italicized] (on white paper), framed "Litorale aust. | Garz | 24.8. 1908 | [on the left] H. STAUDER"; (3) printed (on white paper) "Fruhstorfer Coll. | B.M. 1937-285"; (4) printed (on white paper) "BMNH(E) # 662166".

In the BMNH a male with labels: (1) printed (on red paper) "Type"; (2) handwritten (on white paper) "Dalm. Knin | VII 08"; (3) handwritten (on white paper, framed) "briseis | saga | Fruhst."; (4) printed (on white paper) "Fruhstorfer Coll. | B.M. 1937-285"; (5) printed (on white paper) "BMNH(E) # 662165" exists; probably not a syntype. Type material originally mentioned consisted of "10 ♂♂, 12 ♀♀ Koll. Fruhstorfer" from "Görz" (l. c.: 211). The exact taxonomic status of *Chazara briseis saga* (FRUHSTORFER, 1909) remains unclear; a revision is necessary.

Pseudochazara DE LESSE, 1951

P. anthelea (HÜBNER, [1824])

schawerdae FRUHSTORFER, 1908

"*Satyrus anthelea schawerdae* nov. subspec." FRUHSTORFER, H., 1908c (Neue europäische Satyriden. – Ent. Z. 22 (30) (24.X.1908): 121). Type locality: "Herzegowina, Lastoa" (l. c.: 121).

Syntype ♂ with labels:

(1) printed (on red paper) "Type"; (2) printed with handwritten inscriptions [here italicized] (on white paper), double framed "Herzegowina | *Lastva* | Juli | Dr. Schawerda"; (3) handwritten (on white paper, framed) "anthelea | schawerdae | Fruhst."; (4) printed (on white paper) "Fruhstorfer Coll. | B.M. 1937-285"; (5) printed (on white paper) "BMNH(E) # 662162"

Additional ♀ with labels: (1) printed (on red paper) "Type"; (2) handwritten (on white paper) "Herzegowina | Lastoa, July, | 1908 | [line] | This label added | by G.T."; (3) printed (on white paper) "Fruhstorfer Coll. | B.M. 1937-285"; (4) printed (on white paper) "BMNH(E) # 662163" is probably not a syntype.

Melitaea [FABRICIUS in ILLIGER], 1807 [cf TAEGER & GAEDIKE, 2001]

M. arduinna (ESPER, [1783])

rhodopensis FREYER, [1836]

"*Melitaea*... 332. Pap. *Rhodopensis*" FREYER, C. F., [1836] (Neuere Beiträge zur Schmetterlingskunde... 3 (33): 3; Tab. 193: Fig. 1). Type locality: "europäischen Türkei" (l. c.: 3).

Original description (see also Colour plate I: Fig. 11):

Gen. I.*) Melitaea.

332. P a p. R h o d o p e n s i s.

Tab. 193. Fig. 1.

Ein in der europäischen Türkei durch Hrn. Dr. Friedvaldszky in Pest aufgefunden und neu entdeckter Falter, der auf der Oberseite dem *P. Ino* auf der Unterseite dem *P. Didyma* ähnlich sieht, jedoch größer als beide ist.

Die Grundfarbe der Oberseite aller Flügel ist dunkler und rothbrauner als bei *Ino*. Die Sehnen, Bänder, Halbmonde und Punkte, deutlich schwarz. Die Fühler gescheckt, die Kolben an solchen vorn mit einem rothbraunen Vorstoß. Die Unterseite sehr bunt mit deutlichen schwarzen Binden und Halbmonden. Die Flügelspitze der Vorderflügel, sowie auf den hintern Flügeln, die erste Binde an der Wurzel, die mittlere und die dritte am Franzenrande, gelb.

Die Franzen aller Flügel gelb und schwarz gescheckt. Beym Vergleich mit den verwandten Arten fällt der Unterschied sehr deutlich in die Augen und es ist kein Zweifel, daß dieser Falter nicht eigene Art seyn sollte.

Syntype ♂ with labels:

(1) handwritten (on yellow paper upperside) "Rhodopensis"; (2) printed (on white paper) "Ex coll. | Freyer."; (3) printed (on white paper) "BMNH(E) # 662226"; (4) printed (on red paper), double framed "SYNTYPE ♂ | *Melitaea rhodopensis* (Freyer, [1836]) | [? HOLOTYPE by monotypy] | «*Melitaea*... 332. Pap. Rhodopensis» | Freyer, C. F., [1836] | (Neuere Beiträge zur Schmetterlingskunde... | 3: 3; Tab. 193: Fig. 1) | [line] | Dr S. Abadjiev det. 2002"

Treated as a junior subjective synonym of *Papilio arduinna* ESPER, [1783] (HESSELBARTH, VAN OORSCHOT & WAGENER, 1995: 1035).

M. athalia (ROTTEMBURG, 1775)

satyra HIGGINS, 1955

"*M.[ellicta] athalia* mod. *satyra* mod. n." HIGGINS, L. G., 1955 (A descriptive catalogue of the genus *Mellicta* Billberg... Trans. R. ent. Soc. Lond. **106** (1) (IV.1955): 41–42; Pl. I: Fig. 19). Type locality: "Karlovo, Bulgaria" (l. c.: Pl. I: Fig. 19).

Holotype ♂ with labels:

(1) circle printed (on white paper with red frame) "Holo- | type"; (2) printed (on white paper) "Karlovo | Bulgaria | July 10–16. 1933. | L. G. Higgins."; (3) printed (on white paper) "L.G. Higgins | Bequest | 1985–476"; (4) handwritten (on white paper) "athalia satyra | holotype | 7.Mar.1955. | L.G.Higgins | illust."; (5) printed with handwritten inscriptions [italicized] (on white paper) "*Mellicta athalia* | mod. *Satyra Higgins* | C.R. Smith det. 1986 | HOLOTYPE"; (6) printed (on white paper) "BMNH(E) # 662242"

Paratypes 11 ♂♂, 3 ♀♀ with labels:

- [1 ♂] printed (on white paper) "BMNH(E) # 662243";
- [2 ♂] (1) printed with handwritten inscriptions [here italicized] (on white paper) "FIELD GUIDE | Plate 37 | Fig. 10"; (2) printed (on white paper) "BMNH(E) # 662244";
- [3 ♂] printed (on white paper) "BMNH(E) # 662245";
- [4 ♂] printed (on white paper) "BMNH(E) # 662246";
- [5 ♂] printed (on white paper) "BMNH(E) # 662247";
- [6 ♂] printed (on white paper) "BMNH(E) # 662248";
- [7 ♂] printed (on white paper) "BMNH(E) # 662249";
- [8 ♂] printed (on white paper) "BMNH(E) # 662250";
- [9 ♂] printed (on white paper) "BMNH(E) # 662251";
- [10 ♂] printed (on white paper) "BMNH(E) # 662252";
- [11 ♂] printed (on white paper) "BMNH(E) # 662253";
- [12 ♀] printed (on white paper) "BMNH(E) # 662254";
- [13 ♀] printed (on white paper) "BMNH(E) # 662255";
- [14 ♀] printed (on white paper) "BMNH(E) # 662256";

Paratypes 2–4 and 7–8 with handwritten (on white paper) "satyra | syntype"; all the paratypes with (1) printed (on white paper) "Karlovo | Bulgaria | July 10–16. 1933. | L. G. Higgins."; (2) circle printed (on white paper with yellow frame) "Para- | type"; (3) printed (on white paper) "L.G. Higgins | Bequest | 1985–476"; (4) printed with handwritten inscriptions [here italicized] (on white paper) "*Mellicta athalia* | mod. *Satyra Higgins* | C.R. Smith det. 1986 | PARATYPE"

Type material originally stated consisted of "Holotype ♂ and 17 paratypes" (l. c.: 41). Listed by SMITH (1988: 30). Infrasubspecific taxon.

References

- ABADJIEV, S. (1992): Butterflies of Bulgaria, Part 1, Papilionidae & Pieridae. – Verena Publishers, Sofia, 91 pp.
- ABADJIEV, S. (1993): Butterflies of Bulgaria, Part 2, Nymphalidae: Libytheinae & Satyrinae. – Verena Publishers, Sofia, 127 pp.
- ABADJIEV, S. (1995): Butterflies of Bulgaria, Volume 3, Nymphalidae: Apaturinae & Nymphalinae. – Published by the author, Sofia, 159 pp.
- ABADJIEV, S. (2000): Types of Balkan butterflies. II. Eastern Large Heath, *Coenonympha rhodopensis* ELWES, 1900: type locality and lectotype designation (Lepidoptera: Nymphalidae: Satyrinae). – *Atalanta* **31** (3/4) (XII.2000): 461–466.
- ABADJIEV, S. (2001a): An annotated list of type specimens of Lepidoptera deposited in the collection of the Institute of Zoology, Sofia. I. Butterflies (Lep.: Papilionoidea). – *Entomologist's Rec. J. Var.* **113** (25.I.2001): 19–23.
- ABADJIEV, S. (2001b): Description of a new subspecies of *Erebia cassioides* (REINER & HOHENWARTH, 1792) (Lepidoptera: Nymphalidae: Satyrinae) from Bulgaria. – *Revue suisse de Zoologie* **108** (1) (III.2001): 57–64.
- ABADJIEV, S. (in print): Types of Balkan butterflies. I. Type material and type locality of *Erebia orientalis* ELWES (Lep.: Nymphalidae: Satyrinae). – *Entomologist's Rec. J. Var.*
- ACKERY, P. R. (1973): A list of the type-specimens of *Parnassius* (Lepidoptera: Papilionidae) in the British Museum (Natural History). – *Bull. Br. Mus. nat. Hist. (Ent.)* **29** (1) (9.XI.1973): 1–35, 1 pl.
- ACKERY, R. R. (1999): The Lepidoptera Collections at the Natural History Museum (BMNH), in South Kensington, London. – *Holarctic Lepidoptera* **6** (1) (30.VI.1999): 1–9.
- ACKERY, P. R. & R. L. SMILES (1976): An illustrated list of the type-specimens of the Heliconiinae (Lepidoptera: Nymphalidae) in the British Museum (Natural History). – *Bull. Br. Mus. nat. Hist. (Ent.)* **32** (5) (I.1976): 173–214, 39 pl.
- ARNSCHIED, W. & P. ROOS (1977): Spezifität von *Erebia orientalis* ELWES, 1900. Beiträge zur Kenntnis der Erebiens VI. (Lep., Satyridae). – *Atalanta* **8** (2): 110–112.
- BÁLINT, Zs. (1999): Annotated list of type specimens of *Polyommatus* sensu ELIOT of the Natural History Museum, London (Lepidoptera, Lycaenidae). – *Neue ent. Nachr.* **46** (XI.1999): 1–89, 4 col. pls.
- BÁLINT, Zs. & A. KERTÉSZ (1990): A survey of the subgenus *Plebejides* (SAUTER, 1968) [sic] – preliminary revision. – *Linneana Belgica* **12** (5) (III.1990): 190–224.
- BÁLINT, Zs. & A. OLIVIER (2001): Butterfly species-group taxa from the Balkans and western Anatolia attributed to Imre FRIVALDSZKY (1799–1870) (Lepidoptera: Hesperioidea & Papilionoidea). *Annls hist.-nat. Mus. natn. hung.* **93**: 151–198.
- BANG-HAAS, O. (1934a): Neubeschreibungen und Berichtigungen der Palaearktischen Macrolepidopterenfauna XIII. – *Ent. Z. Frankf. a. M.* **48** (14) (22.X.1934): 108–110.
- BANG-HAAS, O. (1934b): Neubeschreibungen und Berichtigungen der Palaearktischen Macrolepidopterenfauna XIV. – *Ent. Z. Frankf. a. M.* **48** (16) (22.XI.1934): 128.
- BERNARDI, G. (1970): La variation géographique de *Anthocharis gruneri* HERRICH SCHAFFER [sic] – *Lambilionea* **70** (1–4) (25.IV.1970): 1–13.
- BROWN, J. (1977): Subspeciation in the butterflies (Lepidoptera) of the Peloponnesos with notes on adjacent parts of Greece. – *Entomologist's Gaz.* **28** (3) (26.VIII.1977): 141–174.
- BRYK, F. (1921): Neue Parnassiiden. – *Ent. Tidskr.* **42**: 112–119, Fig. 1–13.
- BRYK, F. (1932a): Parnassiologische Studien aus England. – *Parnassiana* **2** (3) (10.VI.1932): 31–33.
- BRYK, F. (1932b): Parnassiologische Studien aus England. – *Parnassiana* **2** (4/5) (6.VIII.1932): 46–50.
- BRYK, F. (1935): Lepidoptera. Parnassiidae pars II (Subfam. Parnassiinae). – *Das Tierreich* **65** (XI.1935): I–LI, 1–788.
- BRYK, F. & C. EISNER (1930): *Parnassius mnemosyne* L. ssp. *balcanica* (n.). – *Parnassiana* **1** (2) (27.VII.1930): 3–4.
- BURESCH, I. (1915a): Varhu biologiyata na *Doritis apollinus* Hbst. (Lepidoptera, Rhopalocera) i razprostranienieto na taya peperuda po Balkanskiya poluostrrov. [Sur la biologie du *Doritis apollinus*

- HBST et sa répartition dans le Péninsule des Balkans.] – Spis. bulg. Akad. Nauk. **12**: 15–36, 1 pl. (In Bulgarian).
- BURESCH, I. (1915b): [Beitrag zur Lepidopterenfauna von Thrazien und Mazedonien.] – Spis. bulg. Akad. Nauk. **12**: 37–54 (In Bulgarian with summary in German).
- BURESCH, I. (1918–1919): Beitrag zur Lepidopterenfauna des Piringebirges (Pirin-Planina) in Mazedonien. – Z. wiss. InsektBiol. **14** (5/6) (20.IX.1918): 97–107, (7/8) (15.XII.1918): 137–144, (9/10) (25.III.1918): 224–231, (11/12) (15.VII.1919): 271–281, Taf. II–IV.
- CAPDEVILLE, P. (1978–1980): Les races géographiques de (Die Geographischen Rassen von) *Parnassius apollo*. – Ed. Sciences nat., Venette, Fasc. I (1978): 1–39, Pl. I–IV; II (1979): 40–65, Pl. V–VIII, 6 cartes; III (1979): 67–94, Pl. IX–XII, 6 cartes; IV (1979): 95–120, Pl. XIII–XVI, V (1980): 121–148, Pl. XVII–XX, VI (1980): 149–191, Pl. XXI–XXIV.
- DAVENPORT, D. (1941): The Butterflies of the Satyrid Genus *Coenonympha*. – Bull. Mus. comp. Zool. Harv. **87** (4) (I.1941): 215–349, 10 pls.
- DE FREINA, J. J. (1985): Revision der Gattung *Archon* HübNER 1822 mit Angaben zur Biologie, Verbreitung, Morphologie und Systematik von *Archon apollinus* (HERBST 1798) und *Archon apollinaris* STAUDINGER [1892] 1891 (stat. nov.) (Lepidoptera, Papilionidae). Nota lepid. **8** (2) (30.VI.1985): 97–128.
- DE JONG, R. (1972): Systematics and geographic history of the genus *Pyrgus* in the Palaearctic region (Lepidoptera, Hesperiiidae). – Tijdschr. Ent. **115** (1) (10.III.1972): 1–121, Pls 1–6.
- DE LOUKER, S. & J. DILS (1987): The occurrence [sic] of *Proterebia phegea* BORKHAUSEN in Greece with description of a new subspecies (Lepidoptera: Nymphalidae: Satyrinae). – Phegea **15** (3) (1.VII.1987): 157–160.
- EISNER, C. (1936): *P. mnemosyne* subsp. *bulgarica* (subsp. nova). – Parnassiana **4** (1–2) (19.12.1936): 9.
- EISNER, C. (1966): Parnassiidae-Typen in der Sammlung J. C. EISNER. – Zool. Verhand. Leiden **81** (16.VI.1966): 1–190, 84 Taf.
- FREYER, C. F. (1831–1858): Neuere Beiträge zur Schmetterlingskunde mit Abbildungen nach der Natur. Published by the author and Rieger, Augsburg, **1** (1–16) (1831–1833): 182 S., 96 Tab.; **2** (17–32) (1833–1836): 162 S., 96 Tab.; **3** (33–48) (1836–1839): 134 S., 96 Tab.; **4** (49–64) (1839–1842): 167 S., 96 Tab.; **5** (65–80) (1842–1845): 166 S., 96 Tab.; **6** (81–100) (1846–1852): 195 S., 120 Tab.; **7** (101–120) (1858): 178 S., 100 Tab.
- FRIVALDSZKY, I. (1835): Közlések a' Balkány' vidékén tett természettudományi utazásról. – A Magyar Tudós Társaság Évkönyvei **2**: 235–276, Tab. I–VII.
- FRUHSTORFER, H. (1906): Eine neue *Thais* von Rhodos. – Societas ent. **21** (31.XII.1906): 147–148.
- FRUHSTORFER, H. (1907): Neue Lokalrassen von paläarktischen Rhopaloceren. – Int. ent. Z. **1** (29) (12.X.1907): 215–216.
- FRUHSTORFER, H. (1908a): Zwei neue Lokalrassen von *Satyrus actaea* Esp. – Int. ent. Z. **1** (46) (15.II.1908): 351.
- FRUHSTORFER, H. (1908b): Neue palaearktische Satyriden. – Int. ent. Z. **2** (2) (11.IV.1908): 9–10.
- FRUHSTORFER, H. (1908c): Neue europäische Satyriden. – Ent. Z. **22** (30) (24.X.1908): 121.
- FRUHSTORFER, H. (1908d): Lepidopterologisches Pele-Mele. VIII. Neue paläarktische Satyriden-Rassen. – Ent. Z. **22** (31) (31.X.1908): 127–128.
- FRUHSTORFER, H. (1909a): Neue paläarktische Satyriden. – Ent. Z. **22** (49) (6.III.1909): 210–212.
- FRUHSTORFER, H. (1909b): Neues über *Pieris manni* [sic]. – Ent. Z. **23** (8) (22.V.1909): 41–42.
- FRUHSTORFER, H. (1909c): Neues über *Satyrus cordula*. – Int. ent. Z. **3** (16) (17.VII.1909): 88–89.
- FRUHSTORFER, H. (1909d): Neue Palaearkten. – Int. ent. Z. **3** (21) (21.VIII.1909): 120.
- FRUHSTORFER, H., (1909e): Neue Satyriden. – Int. ent. Z. **3** (24) (11.IX.1909): 133–135.
- FRUHSTORFER, H. (1909f): Neues über *Parnassius apollo*. – Int. ent. Z. **3** (30) (23.X.1909): 161.
- FRUHSTORFER, H. (1917a): Neue Rhopaloceren aus der Sammlung LEONHARD. – Arch. Naturgesch. **82** (1916) A (2) (I.1917): 1–28; 1 Taf.
- FRUHSTORFER, H. (1917b): Neue *Melanargia galathea*-Rassen. – Societas ent. **32** (2) (2.II.1917): 5–6.
- FRUHSTORFER, H. (1917c): Neue paläarktische Rhopaloceren. – Ent. Z. **30** (25) (3.III.1917): 99–100.
- FRUHSTORFER, H. (1917d): Neue Lycaeniden. – Ent. Rdsch. **34** (4) (13.IV.1917): 16–18.
- FRUHSTORFER, H. (1917e): Neue palaearktische Lycaeniden. – Dt. ent. Z. Iris **31** (1/2) (1.VII.1917): 24–43.

- FRUHSTORFER, H. (1917f): Altes und Neues über Erebien. – Dt. ent. Z. *Iris* **31** (1/2) (1.VII.1917): 43–56.
- FRUHSTORFER, H. (1918a): *Erebia alecto* Rediviva. – Arch. Naturgesch. **82** (1916) A (7) (I.1918): 121–169, 2 Taf.
- FRUHSTORFER, H. (1918b): Monographische Uebersicht alter und neuer *Erebia*-Formen. – Dt. ent. Z. *Iris* **31** (1917) (3/4) (1.II.1918): 83–110.
- FRUHSTORFER, H. (1920): Altes und Neues über Erebien. – Arch. Naturgesch. **84** (1918) A (7) (IV.1920): 83–108.
- FRUHSTORFER, H. (1921): Neue *Parnassius apollo* Rassen. – Ent. Anz. **1** (8) (10.VIII.1921): 87–89.
- GLASSL, H. (1993): *P. apollo*. Seine Unterarten. – Published by the author, Möhrendorf, 214 pp.
- GODART, J.-B. (1821): Histoire naturelle des Lépidoptères ou Papillons de France. Descrits par M. GODART, peints par M. C. VAUTHIER. Diurnes. Première partie [1]. – Environs de Paris. – Crevot, Paris, 296 pp., 39 pls.
- GRAVES, P. P. & A. F. HEMMING (1928): The geographical variation of *Lycaena virgaureae* LINN. – Entomologist **61** (777): 25–31, 2 pls., (778): 56–62, (779): 86–90, (780): 104–109, (781): 128–135.
- HELLWIG, J. C. L. (1795): Fauna Etrusca sistens Insecta quae in provinciis Florentina et Pisana praesertim collegit PETRUS ROSSIVS. Tomus Primus, cum XI Tab. Mantissae priore parte adiecta, iterum edita et annotatis perpetuis aucta a. D. JOH. CHRIST. LUD. HELLWIG. – Fleckeisen, Helmstedtii. 2 Parts, 1795–1797. 8. 1: 28+457 pp., 11 pls (Butterflies: 222–253); 2: 6+511 pp. (by Illiger).
- HEMMING, A. F. (1932): Supplementary notes on the collection of butterflies made in Greece by General VAN STRAUBENZEE in 1931. – Entomologist **65** (VIII.1932): 179–183.
- HEMMING, A. F. (1934): Revisional notes on certain species of Rhopalocera (Lepidoptera). – *Stylops* **3** (9) (15.IX.1934): 193–200.
- HESELBARTH, G., VAN OORSCHOT, H. & S. WAGENER (1995): Die Tagfalter der Türkei unter Berücksichtigung der angrenzenden Länder. – Selbstverlag Sigbert Wagener, Bocholt, Bd. 1–3: 1354+847pp.
- HIGGINS, L. G. (1955): A descriptive catalogue of the genus *Mellicta* BILLBERG (Lepidoptera: Nymphalidae) and its species, with supplementary notes on the genera *Melitaea* and *Euphydryas*. – Trans. R. ent. Soc. Lond. **106** (1) (IV.1955): 1–131, 2 pls.
- HIGGINS, L. G. (1965): Five New Butterflies. – Entomologist **98** (I.1965): 10–12.
- ICZN – International Code of Zoological Nomenclature (1999): Fourth edition, adopted by the International Union of Biological Sciences. – International Trust for Zoological Nomenclature, c/o The Natural History Museum, London, xxx+306 pp.
- KOÇAK, A. Ö. (1979): Studies on the family Lycaenidae II. New Taxa and Records from Turkey. – *Atalanta* **10** (4a) (XII.1979): 309–325.
- KOÇAK, A. Ö. (1981): (1981–1983) Critical Check-List of European Papilionoidea (Lepidoptera). – *Primus* **1** (2) (9.XII.1981): 46–90.
- KOLAR, H. & H. REBEL (1934): In: KOLAR, H. *Parnassius apollo* L. auf dem Olymp. – Int. ent. Z. **28** (29) (1.XI.1934): 366–368.
- KUDRNA, O. (1977): A Revision of the Genus *Hipparchia* FABRICIUS. E. W. Classey Ltd, Faringdon, 300 pp.
- KUDRNA, O. (1983): An Annotated Catalogue of the Butterflies (Lepidoptera: Papilionoidea) Named by ROGER VERITY. – *J. Res. Lep.* **21** (15.VII.1983): 1–106.
- KUDRNA, O. (1985): European butterflies (Lepidoptera: Papilionoidea) named by HANS FRUHSTORFER. – *Nachr. ent. Ver. Apollo, Suppl.* **5** (XII.1985): 1–60.
- NEKRUTENKO, Y. P. (2000): A catalogue of the type specimens of Palaearctic Riodinidae and Lycaenidae (Lepidoptera, Rhopalocera) deposited in the collection of the Museum für Naturkunde der Humboldt Universität zu Berlin. – *Nota lepid.* **23** (3/4) (1.XII.2000): 192–352.
- NICHOLL, M. DE LA B. (1900): Bulgarian butterflies. – Entomologist's Rec. J. Var. **12** (2) (15.II.1900): 29–34, (3) (15.III.1900): 64–69.
- OLIVIER, A. (1993): The butterflies of the Greek Island of Ródos: taxonomy, faunistics, ecology and phenology with a tentative synthesis on the biogeography of the butterflies of Kíri (Crete),

- Kárpathos, Ródos, the Eastern Aegean islands and Kípros (Cyprus) (Lepidoptera: Hesperioidea & Papilionoidea). – Vlaamse Vereniging voor Entomologie, Antwerpen; 250 pp.
- OLIVIER, A. & J. G. COUSIS (1997): A revision of the superspecies *Hipparchia azorina* and of the *Hipparchia aristaeus* group (Nymphalidae: Satyrinae). – *Nota lepid.* **20** (3/4) (10.XII.1997): 150–292.
- REBEL, H. (1901): Nachträge (Addenda) zum Theil I. In: STAUDINGER, O. & H. REBEL, *Catalog der Lepidopteren des palaearctischen Faunengebietes*. – Friedländer & Sohn, Berlin: 249–256.
- REBEL, H. (1904): Studien über die Lepidopterenfauna der Balkanländer. II. Teil. Bosnien und Herzegowina. – *Annl. naturh. Mus. Wien* **19**: 97–377, Taf. IV–V.
- ROTHSCHILD, W. (1918): *Catalogue of the Parnassiinae in the Tring Museum*. – *Novit. zool.* **25**: 218–262.
- SMITH, C. R. (1988): LIONEL GEORGE HIGGINS – A bibliography and type catalogue. – *Entomologist's Gaz.* **39**: 17–37.
- STAUDINGER, O. (1870): Beitrag zur Lepidopterenfauna Griechenlands. – *Horae Soc. ent. ross.* **7** (1780): 3–304, Taf. 1–3.
- TAEGER, A. & R. GAEDIKE (2001): On the papers "Systema Glossatorum..." of FABRICIUS (1807) and "Die neueste Gattungs-Eintheilung der Schmetterlinge..." of ILLIGER (1807) and the consequences for authorship of several generic names. – *Nota lepid.* **24** (1/2) (10.VIII.2001): 85–88.
- TUTT, J. W. (1905–1914): *A Natural History of British Butterflies*. Vol. **1** (= 8): 479 pp., 20 pls (1.XI.1905–30.XII.1906); **2** (= 9): 495 pp., 28 pls (15.II.1907–25.IV.1908); **3** (= 10): 410 pp., 50 pls (XII.1908–XII.1909); **4**: continued by G. WHEELER: 373 pp., 45 pls (pls 3, 12 and 20 not published) (15.II.1910–4.VII.1914).
- VANE-WRIGHT, R. I. & P. R. ACKERY (1981): The B. C. S. WARREN Collection and its Type Material. – *Entomologist's Rec. J. Var.* **93** (1) (1.I.1981): 1–3; (5/6) (15.VI.1981): 112–115; (7/8) (VIII.1981): 172–175.
- VERITY, R. (1905–1911): *Rhopalocera palaearctica*. [1.] *Papilionidae et Pieridae*. – Published by the author, Firenze, 86+368 pp., 2+12+72 pls. [on the dates of publication see KUDRNA, 1983].
- VERITY, R. (1936–1937): The Butterfly races of Macedonia. *Entomologist's Rec. J. Var.* **48** (11–12) (Suppl.) (XI–XII.1936): (1)–(8); **49** (1–3) (Suppl.) (I–III.1937): (9)–(22).
- VERITY, R. (1938–1939): Supplement to the "Butterfly races and Zygaenae of Macedonia" – *Entomologist's Rec. J. Var.* **50** (Suppl.) (7) (15.VII.1938): (1)–(4), (9) (15.IX.1938): (5)–(8), (11) (15.XI.1938): (9)–(12), (12) (15.XII.1938): (13)–(16), Pl. 3; **51** (Suppl.) (1) (15.I.1939): (17)–(20).
- WAGENER, S. (1990): *Colias caucasica balcanica* REBEL, 1901 (comb. nov., stat. nov.) (Lepidoptera: Pieridae). – *Phegea* **18** (2) (1.VI.1990): 59–63.
- WARREN, B. C. S. (1926): Monograph of the tribe Hesperiiidi (European species) with revised classification of the subfamily Hesperiiinae (Palaearctic species) based on the genital armature of the males. – *Trans. ent. Soc. Lond.* **74** (XI.1926): 1–170; Pls I–LX; 2 Text-figs.
- WARREN, B. C. S. (1932): Notes on Erebiid species. – *Entomologist's Rec. J. Var.* **44** (15.XII.1932): 165–167.
- WARREN, B. C. S. (1933): Notes on Erebiid species. – *Entomologist's Rec. J. Var.* **45** (3) (15.III.1933): 40–41.
- WARREN, B. C. S. (1936): Monograph of the genus *Erebia*. – *British Museum (Natural History), London*, vii+407 pp.; 104 pls. (28.III.1936).
- ZIEGLER, H. (1901): In: *Sitzungsberichte des Entomologischen Vereins in Berlin für das Jahr 1900*. 1. Theil. Sitzung vom 22. März. – *Berliner Entomologische Zeitschrift* **46** (1) (VI.1901): (11)–(12).
- ZÜLLICH, R. (1929): Einige neue Lycaenidenformen aus meiner Sammlung. – *Z. österr. Ent. Ver.* **14** (5) (15.V.1929): 51–53.

address of the author

Dr. STANISLAV P. ABADJIEV
Institute of Zoology
1 Tsar Osvoboditel Blvd
Sofia 1000
Bulgaria
e-mail: abadjiev@mac.com

Colour plate I

© figs 1–9 The Natural History Museum, London.

Fig. 1: *Parnassius apollo hermiston* FRUHSTORFER, 1921, syntype ♂, "BMNH(E) # 662026", BMNH (Photo BMNH).

Fig. 2: *Lycaena virgaureae balcanicola* GRAVES, 1928, holotype ♂, "BMNH(E) # 662104", BMNH (Photo BMNH).

Fig. 3: Same as fig. 2, underside (Photo BMNH).

Fig. 4: *Lycaena virgaureae balcanicola* GRAVES, 1928, allotype [paratype] ♀, "BMNH(E) # 662105", BMNH (Photo BMNH).

Fig. 5: Same as fig. 4, underside (Photo BMNH).

Fig. 6: *Lycaena candens leonhardi* FRUHSTORFER, 1917, syntype ♂, "BMNH(E) # 662106", BMNH (Photo BMNH).

Fig. 7: Same as fig. 6, underside (Photo BMNH).

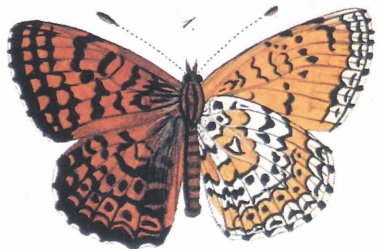
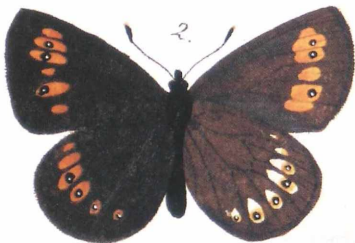
Fig. 8: *Lycaena candens leonhardi* FRUHSTORFER, 1917, syntype ♀, "BMNH(E) # 662107", BMNH (Photo BMNH).

Fig. 9: Same as fig. 8, underside (Photo BMNH).

Fig. 10: "*Hipparchia*... 333. Pap. *Phorcys*" FREYER, [1836]: Tab. 193: Fig. 2.

Fig. 11: "*Melitaea*... 332. Pap. *Rhodopensis*" FREYER, [1836]: Tab. 193: Fig. 1.

1		6
		7
2	4	8
3	5	9
10		11



ZOBODAT - www.zobodat.at

Zoologisch-Botanische Datenbank/Zoological-Botanical Database

Digitale Literatur/Digital Literature

Zeitschrift/Journal: [Neue Entomologische Nachrichten](#)

Jahr/Year: 2002

Band/Volume: [53](#)

Autor(en)/Author(s): Abadjiev Stanislav P.

Artikel/Article: [Types of Balkan butterflies in the collection of The Natural History Museum, London \(Lepidoptera: Hesperioidea & Papilionoidea\) 3-53](#)