

**Ergebnisse einer zoologischen Sammelreise nach Brasilien,  
insbesondere in das Amazonasgebiet, ausgeführt von  
Dr. H. Zerny.**

V. TEIL.

**Micro-Lepidoptera**

by Edward Meyrick (Marlborough).

(With two plates.)

The collection of Micro-Lepidoptera (*Tortrices*, *Tineae*, *Orneodidae*, *Pterophoridae*) made by Dr. H. Zerny in Brazil, May-September, 1927, was entrusted to me for study in June, 1929, and a list of the species is now given. There were about 750 specimens, and the condition of the material was excellent. Taperinha, the locality of the main collection, is near Santarem. About 300 determinable species are included; of these 9 genera and 69 species are found to be new to science. The previously ascertained geographical range is stated for each species.

**Pterophoridae.**

**Trichoptilus congrualis** Walk. Cat. XXX, 943 (1864).

2 ex. Pernambuco, April, May. Widely spread (probably by man) in warm regions of Africa, Asia, the Pacific islands, and North and South America.

**Platyptilia donatella** Walk. Cat. XXX, 952 (1864).

1 ex. Taperinha, July. This example has a snow-white blotch occupying apex and terminal cilia of first lobe of hindwings; I have a similar example in my collection, taken with others of ordinary type at Iquitos, Peru, which it resembles in all other characters; I am satisfied that it is only a curious variety. Upper and Lower Amazon.

**Platyptilia brachymorpha** Meyr. Trans. Ent. Soc. Lond. 1888, 240.

2 ex. Taperinha, June, July. In warm regions of Africa, Asia, Australia, and North America, but not previously recorded from South America, and doubtless still extending its range.

**Platyptilia** sp.?

1 ex. Serra do Itatiaya, Südabhang, Waldregion, October. Closely similar to *carduidactyla* Ril. (common in North America), with quite similar

scale-tooth of hindwings, but not in good enough condition to discriminate in this difficult group.

#### Orneodidae.

**Orneodes ancalopa** Meyr. Exot. Micr. II, 409 (1921).

1 ex., Taperinha, August. Brazil, Guiana.

#### Tortricidae.

**Cacoecia geographica** Meyr. Trans: Ent. Soc. Lond. 1911, 678 (1912).

1 ex., Taperinha, August. Venezuela, Guiana.

**Cacoecia biforata** n. sp. Pl. I, f. 1.

♀ 25 mm. Head dark brown. Palpi reddish-brown, terminal joint fuscous. Thorax pale ochreous. Forewings oblong, costa anteriorly moderately arched, then straight, apex pointed, prominent, termen sinuate, rather oblique; pale ochreous, a few scattered black specks; some light ochreous-brownish suffusion towards dorsum from  $\frac{1}{4}$  onwards and on terminal area, and an oblique light ochreous-brownish blotch on dorsum beyond middle indicating central fascia; a streak of light greyish-ochreous suffusion along costa from before middle to near apex; two small superposed grey marks spotted black in disc towards termen; some faint grey-whitish dots on upper part of termen: cilia pale ochreous, a brown basal line on termen, at apex a small dark fuscous spot. Hindwings whitish-grey, interneural series of grey dots or strigulae; cilia grey-whitish, a basal series of grey marks, on costa a thickened patch of dense raised grey scales in situation from beyond middle to near apex.

1 ex., Serra do Itatiaya, Südabhang, Waldregion, October. Distinct and interesting.

**Tortrix stictoneura** n. sp. Pl. II, f. 1.

♂ 15—17 mm. Head, palpi, thorax whitish-grey. Antennal ciliations 1. Forewings rather elongate, slightly dilated, costa gently arched, without fold, apex obtuse, termen straight, oblique; whitish sprinkled light grey, in one example suffused pale ochreous-grey, often with series of small fuscous dots on veins; a blackish dot on end of cell, sometimes also a smaller one in disc at  $\frac{2}{5}$ : cilia whitish. Hindwings whitish or grey-whitish; cilia whitish.

9 ex., Serra do Itatiaya, 2000—2700 m., October. Most nearly related to *indigestana* Meyr., from Australia and New Zealand.

**Tortrix degenerans** n. sp. Pl. II, f. 2.

♂ 18 mm. Head whitish-ochreous. Palpi light ochreous, internally white. Antennal ciliations 1. Thorax ochreous-brownish suffused grey. Forewings moderate, somewhat dilated, costa gently arched, without fold, apex obtuse, termen nearly straight, oblique; in one example light yellow-ochreous with anterior half partially suffused light fuscous and posteriorly with several

irregular undefined pale brownish oblique transverse streaks, in the other ochreous-brownish almost wholly irregularly suffused fuscous: cilia whitish-ochreous. Hindwings light grey; cilia ochreous-whitish, a faint light yellow-greyish subbasal shade.

2 ex., Serra do Itatiaya, 2000—2700 m., October. Allied to the preceding.

**Amorbia decerptana** Zell. Hor. Ross. XIII, 93 (1877).

1 ex., Taperinha, July. Guatemala, Panama, Guiana, Brazil, Peru.

#### Eucosmidae.

**Crociosema plebeiana** Zell. Is. 1847, 721.

1 ex., Taperinha, July. This familiar species, now spread through sufficiently warm regions of the whole world, is probably indigenous in South America, which is the home of the genus.

**Acharneodes cnemoptila** n. sp. Pl. II, f. 3.

♂ 15 mm. Head, palpi, thorax dark grey, sidetufts of crown and tegulae irrorated whitish. Posterior tibiae with long fine pale greyish hairs and long expansible hairpencil from base resting on these. Forewings triangular, costa slightly arched, apex obtuse, termen rather obliquely rounded; grey transversely strigulated and marbled dark fuscous, forming undefined basal patch, broad somewhat oblique central fascia, and slender subterminal fascia finely furcate near tornus, costa posteriorly with some indistinct short direct whitish strigulae between dark spots; a minute whitish dot on transverse vein: cilia dark grey. Hindwings dark grey; submedian fold forming a deep groove or furrow; cilia grey, a darker subbasal line.

1 ex., Pernambuco, April.

**Cosmorrhyncha ocelliferana** Walk. Cat. XXVIII, 408 (1863); *ocellata* Mab. Ann. S. E. Fr. LXVIII, 750 (1899); *acrocisma* Meyr, Proc. Zool. Soc. Lond. 1908, 767.

3 ex., Taperinha, July, September. Guiana, Brazil, Peru, Bolivia; also in South Africa and Madagascar; this remarkable distribution is as yet unexplained.

**Parachanda polycosma** n. sp. Pl. I, f. 2.

♀ 18 mm. Head ochreous, crown suffused purplish-brown. Palpi ochreous-yellow, terminal joint with a fuscous spot. Thorax purplish-grey suffused darker anteriorly, lateral margins spotted ochreous-whitish. Forewings elongate-triangular, costa gently arched, apex obtuse, termen slightly rounded, little oblique; 7 to termen; fulvous, mostly obscured with suffused blackish marbling and strigulation except along posterior half of costa and on ocellus; some whitish marking at base, two irregular curved whitish lines crossing wing about  $\frac{1}{3}$ , yellowish in middle, two yellowish marks in disc before these, and three transverse whitish spots above dorsum on basal area, separated by blue suffusion; a small white mark on middle of costa, beyond

this five oblique white marks tipped blue, tips of first and last of these connected by a subcostal blue line; a curved lighter ochreous line crossing disc at  $\frac{3}{4}$ , preceded by a blue-grey blotch with a whitish anterior mark; ocellus including a transverse-oval metallic-violet spot near termen and a dot below it, each preceded by a black dot, terminal edge light yellow except in middle: cilia glossy grey, a dark fuscous basal line, yellow-whitish spaces at apex and tornus. Hindwings bronzy-fuscous, disc suffused orange-yellow, apex and upper  $\frac{2}{3}$  of termen suffused dark fuscous; cilia grey-yellowish, a grey subbasal line.

1 ex., Taperinha, July. The second species of the genus; the other is a much larger insect from the Bolivian Andes.

**Argyroploce cymotoma** Meyr. Trans. Ent. Soc. Lond. 1917, 26.

1 ex., Taperinha, June. British Guiana.

#### Gelechiadae.

**Platyedra gossypiella** Saund. Trans. Ent. Soc. Lond. (1) III, 285 (1843).

6 ex., Pernambuco, April, May. Originally described from India, this well-known pest of the cotton-plant has now spread wherever cotton is grown.

**Parastega chionostigma** Wals. Biol. Centr. Amer. IV, 57, pl. II, 17 (1911);

*ochropis* Meyr. Trans. Ent. Soc. Lond. 1914, 236.

3 ex., Taperinha, July, September. Panama, Guiana, Ecuador, Brazil.

**Compsolechia perlatella** Walk. Cat. XXIX, 612 (1864).

1 ex., Taperinha, August. Guiana, Brazil, Peru.

**Compsolechia chelidonia** Meyr. Trans. Ent. Soc. Lond. 1922, 82.

1 ex., Santarem, October. The unique type is from Obidos.

**Compsolechia monochromella** Walk. Cat. XXIX, 607 (1864).

1 ex., Pernambuco, April. Upper and Lower Amazon.

**Pessograptis cyanactis** n. sp. Pl. II, f. 4.

♂ 15—16 mm. Head ochreous-whitish, crown mixed grey. Antennae nearly 1. Palpi second joint grey, tip white, terminal joint whitish, with median and basal grey bands. Thorax ochreous-whitish, somewhat sprinkled dark grey. Forewings rather narrow, costa straight, arched towards rounded apex, termen rather obliquely rounded; 7 and 8 stalked; ochreous-whitish, irregularly speckled grey; veins partially and irregularly streaked with blackish irroration; two very elongate irregular-oval spots about fold, first about  $\frac{1}{3}$ , suffused blackish, second somewhat beyond middle, light greyish outlined blackish irroration, surrounded with whitish suffusion beneath: cilia light greyish somewhat sprinkled blackish. Hindwings violet-hyaline (in oblique light deep violet-blue); veins suffused dark grey: a ter-

minal fascia of grey suffusion, narrower and darker on lower half; cilia grey.

3 ex., Taperinha, June, July.

**Crasimorpha peragrata** Meyr. Exot. Micr. III, 33 (1923).

♂. 26 mm. Differs from ♀ as follows: palpi longer, second joint with moderate projecting apical tuft beneath (doubtless present also in ♀ but partially abraded in the type), terminal joint longer, almost as long as second, with additional suprmedian blackish bar; forewings apex less rounded, 3 and 4 nearly approximated at base (not stalked); an elongate dark fuscous mark (shorter than median) on costa about  $\frac{1}{4}$  (indicated in ♀ also); hindwings suffused whitish anteriorly, 3 and 4 connate (not stalked); forewings beneath with a few very long expansible hairs from towards dorsum near base.

1 ex., Taperinha, August. Original type a ♀ from French Guiana; it is probable that the above differences are sexual (or individual) only, and that the present example is really conspecific.

**Porpodryas prasinantha** Meyr. Exot. Micr. II, 305 (1920).

2 ex., Taperinha, August, September. French Guiana, Upper Amazon.

**Vazugada phoenogramma** n. sp. Pl. II, f. 9.

♀ 17 mm. Head, thorax light lilac-grey. Palpi dark grey, apical edge of second joint whitish, terminal joint whitish posteriorly. Abdomen dark grey. Forewings elongate, costa gently arched, faintly sinuate in middle, apex obtuse-pointed, termen nearly straight, rather oblique; light lilac-grey partially sprinkled brownish; costa slenderly dull rosy from base to  $\frac{3}{4}$ , extreme edge ochreous; markings fulvous-brown, viz. a short irregular transverse line in disc at  $\frac{1}{5}$ , a rather curved irregular transverse streak before middle from towards costa to beneath fold, a dot beyond apex of this, a slender irregular streak on transverse vein, an irregular undefined transverse shade near beyond this, not crossing costal streak, and a similar irregular shade from costa at  $\frac{4}{5}$  to tornus; a marginal series of black triangular dots round apical part of costa and termen: cilia pale grey. Hindwings grey; cilia light grey.

1 ex., Taperinha, July.

**Vazugada percnacma** Meyr. Exot. Micr. II, 623 (1923).

1 ex., Taperinha, July. Upper and Lower Amazon.

**Myrophila caryoplecta** n. sp. Pl. II, f. 10.

♂ 16—17 mm. Head iron-grey. Palpi dark grey, slightly pale-speckled, expanded scales of second joint long, dense. Thorax dark grey. Abdomen pale grey, apical third suffused darker. Forewings elongate, apex obtuse, termen nearly straight, rather oblique; iron-grey, costa suffused darker, dorsal half tinged bluish or brownish in varying lights; an oblique brown streak from dorsum at  $\frac{1}{4}$ , reaching rather more than half across wing; a

dark fuscous rhomboidal blotch occupying dorsal half of wing from  $\frac{3}{5}$  to termen, anterior half of upper edge formed by a thick chestnut-brown streak; apical and terminal edge black slightly edged whitish internally: cilia glossy purple-grey. Hindwings and cilia grey.

2 ex., Taperinha, July. Differs from the other species of the genus by its grey colouring.

**Deoclona xanthoselena** Wals. Biol. Centr. Amer. IV, 83, pl. III, 4 (1911).

2 ex., Taperinha, July. Panama, Guiana, Lower Amazon.

**Cymotricha amphicosma** n. sp. Pl. II, f. 11.

♀. 17 mm. Head, thorax dark blue-fuscous, face paler. Palpi coppery-fuscous, terminal joint whitish sprinkled dark fuscous. Abdomen blackish-fuscous, segmental margins blue-grey. Forewings elongate, costa rounded-prominent at  $\frac{1}{3}$ , moderately arched at  $\frac{2}{3}$ , sinuate between these, apex rounded, termen rather obliquely rounded; blue-grey; a moderate blackish-fuscous fascia at  $\frac{1}{3}$ , mostly deep ferruginous on costal half, posteriorly edged whitish, rounded-angulated in middle, anteriorly with two projections in disc; a small round black whitish-edged spot in middle of disc, and a larger one beneath this, whence a ferruginous line runs along dorsum to tornus; a transverse blackish-fuscous whitish-edged blotch in disc beyond middle, upper half filled ferruginous; a triangular blackish patch resting on termen from apex to tornus, whitish-edged except above, its angle touching upper end of preceding blotch; some slight whitish suffusion on costa towards apex: cilia grey-whitish, blackish-grey basal and antemedian lines, outer half suffused coppery with grey lines, above apex dark grey. Hindwings grey, tornus suffused blackish-grey; cilia whitish, with five grey lines. Forewings beneath grey with elongate orange-ochreous patch along basal third of costa. Hindwings beneath grey; an irregular orange patch along basal third of costa; a pale silvery-bluish patch along posterior half of costa, including towards apex an orange blotch with some black irroration.

1 ex., Taperinha, July; also 1 seen from San Leopoldo, Brazil. A very distinct species perhaps with some relationship to *mitlophragma*; the ornamentation of undersurface of hindwings is doubtless displayed under appropriate circumstances.

**Cymotricha sumptella** Walk. Cat. XXIX, 609 (1864).

1 ex., Taperinha, July. Upper and Lower Amazon.

**Stibarenches** n. g.

Head with loosely appressed scales; ocelli posterior; tongue developed. Antennae  $\frac{3}{4}$ , ♂ simple, scape elongate, without pecten. Labial palpi long, recurved, second joint thickened with dense appressed scales loosely expanded at apex above, terminal joint as long as second, thickened with dense scales, rough posteriorly, pointed. Maxillary palpi rudimentary. Posterior tibiae rather rough-scaled above. Forewings 2 and 3 stalked, 4 and 5 rather approximated at base, 7 absent, 11 from middle. Hindwings over

1, trapezoidal-ovate, termen hardly sinuate, cilia  $\frac{2}{5}$ ; 2 from towards angle, 3 and 4 connate, 5 nearly parallel, 6 and 7 approximated towards base; without cubital pecten.

Belongs to the *Dichomeris* group, perhaps allied to *Trichotaphe*.

**Stibarenches bifissa n. sp.** Pl. II, f. 5.

♂. 14 mm. Head, thorax pale greyish-ochreous, shoulders suffused grey. Palpi whitish-ochreous irregularly sprinkled dark grey. Abdomen light grey, apex whitish-ochreous. Forewings elongate, costa gently arched, apex obtuse, termen rather obliquely rounded; dark grey; a small pale greyish-ochreous spot in middle of base, and extreme dorsal edge pale greyish-ochreous at base; a short pale greyish-ochreous dash on fold beneath middle; and a longer one in disc beyond middle; some indistinct marginal dots of pale greyish-ochreous suffusion round apex and termen: cilia pale greyish-ochreous mixed grey (imperfect). Hindwings grey; cilia pale grey.

1 ex., Taperinha, July.

**Glyphidocera indocilis n. sp.** Pl. II, f. 6.

♂, ♀. 13 mm. Head, thorax light ochreous-fuscous. Palpi ♂ fuscous, terminal joint with rough projecting scales posteriorly, ♀ ochreous-whitish irrorated fuscous. Antennae grey-whitish ringed fuscous, ♂ with rather shallow notch. Abdomen light greyish-ochreous. Forewings elongate, costa gently arched, apex obtuse, termen rather obliquely rounded; 8 and 9 approximated at base; greyish-ochreous irrorated fuscous; stigmata fuscous, discal moderately large, plical small, rather obliquely before first discal: cilia greyish-ochreous, a grey subbasal shade. Hindwings grey, paler anteriorly; in ♂ a fringe of rough hairscales along all lower margin of cell; cilia whitish-grey, in ♂ forming a whitish-ochreous hairpencil at base of dorsum.

1 ♂, Taperinha, June; also 2 ♀, Santarem and Teffé, August, January (*Parish*), in my Coll. Very like *inurbana*, but distinct by sexual structures of palpi and hindwings.

#### Cosmopterygidae.

**Amblytenes n. g.**

Head smooth; ocelli posterior; tongue developed. Antennae (nearly 1?) simple, scape elongate, rather swollen, without pecten. Labial palpi rather long, obliquely ascending, second joint with appressed scales, somewhat rough towards apex beneath, terminal joint less than half second, slender, pointed. Maxillary palpi rudimentary. Posterior tibiae rough-scaled above. Forewings 2 from angle, 4 absent, 7 and 9 stalked, 7 to costa, 8 absent, 10 from towards angle, 11 from middle, strong. Hindwings  $\frac{3}{4}$ , lanceolate, obtuse-pointed, cilia 1; 2—4 parallel, extremely short, cell open between 4 and 5, 5 and 6 short-stalked, 7 parallel.

Allied to *Batrachiedra*, of which it is a development.

**Amblytenes lunatica n. sp.** Pl. II, f. 7.

♂. 19 mm. Head, palpi, thorax silvery-white. Abdomen pale ochreous. Forewings elongate, rather narrow, costa faintly sinuate, strongly arched towards obtuse apex, termen very obliquely rounded; silvery-white suffused ochreous posteriorly, mostly varying from one colour to the other according to obliquity of light, tinged purple towards dorsum, a patch of ferruginous-brownish suffusion in disc beyond cell; some fine black irroration towards lower  $\frac{2}{3}$  of termen (cilia injured). Hindwings and cilia whitish-ochreous.

1 ex., Taperinha, July. The specimen is in indifferent condition, but is a distinct new type.

**Blastobasidae.****Blastobasis atrosema n. sp.** Pl. I, f. 3.

♂. 19 mm. Head white, crown tinged greyish. Palpi grey, terminal joint and apex of second white. Antennae without notch, ciliations 1. Thorax grey. Abdomen bronzy-brown, segmental margins grey. Forewings elongate, costa faintly sinuate, arched towards obtuse apex, termen extremely obliquely rounded; rather dark grey; an elongate patch of whitish suffusion in disc from near base, terminated by an indistinct angulated fascia of dark suffusion about  $\frac{2}{5}$ , and some whitish suffusion along costa from near base to fascia; some irregular streaking and marbling of whitish suffusion on posterior half of wing: cilia light grey. Hindwings subhyaline-greyish, veins dark grey, apex and termen irregularly suffused grey; cilia light grey.

1 ex., Taperinha, August.

**Blastobasis sp.?**

1 ♀, Taperinha, June, 20 mm, wings unusually broad and obtuse, but in poor condition and without traceable markings, not fit to describe.

**Auximobasis liberatella Walk.** Cat. XXIX, 624 (1864).

♀. 14 mm. Head, palpi, thorax light greyish-ochreous. Forewings elongate, somewhat widened anteriorly, costa arched towards pointed apex, termen extremely oblique; light grey-brownish, sprinkled grey-whitish; an obscure slightly curved fascia of grey-whitish suffusion at  $\frac{1}{3}$ , followed by a fascia without whitish irroration, its extremities suffused fuscous; discal stigmata distinct, dark fuscous, a similar dot beneath second, plical rather indistinct, on edge of whitish fascia, obliquely before first; a small fuscous spot on costa at  $\frac{3}{4}$ ; a marginal series of dark fuscous dots round posterior part of costa and termen: cilia pale greyish, round apex irrorated whitish. Hindwings  $\frac{1}{2}$ , grey; cilia 2, pale grey.

1 ex., Pernambuco, April. I have described this example, which I believe to be conspecific with Walker's unique type, also a ♀, from Upper Amazon, described as a *Gelechia*.



**Oecophoridae.**

**Triclonella elliptica** Meyr. Exot. Micr. I, 543 (1916).

14 ex., Taperinha, June—August. French Guiana, Upper Amazon.

**Philtronoma roseicorpus** Dogn. Hét. Nouv. I, 45 (1910).

9 ex., Taperinha, June—September. Guiana, Bolivia, Peru.

**Gonada falculinella** Busck. Proc. U. S. Mus. XL, 211, pl. VIII, 5 (1911).

3 ex., Taperinha, July, August. French Guiana.

**Orsotricha raptans** Meyr. Exot. Micr. II, 366 (1920).

1 ex., Taperinha, July. Guiana, Upper Amazon.

**Eomichla xystidota** Meyr. Exot. Micr. II, 215 (1918).

1 ex., mouth of Tocantins R., May. French Guiana.

**Eomichla nummulata** Meyr. Exot. Micr. I, 546 (1916).

1 ex., Taperinha, July. French Guiana.

**Eomichla leucoclista** n. sp. Pl. I, f. 4.

♂. 24 mm. Head white, face and anterior edge of collar suffused crimson. Palpi ochreous, second joint with suffused crimson lateral stripe, terminal joint half second. Antennal ciliations over 2. Thorax whitish, sides posteriorly and crest suffused orange. Abdomen reddish-orange. Forewings moderate, slightly dilated, costa gently arched, apex rounded, termen rather obliquely rounded; 2 and 3 approximated towards base, 9 and 10 nearly approximated to 8 at base; whitish-rose-pink; costal edge irregularly rosy-orange, an orange spot beneath this at  $\frac{1}{3}$ ; dorsal half irregularly suffused orange from about  $\frac{1}{4}$  to near termen, extending over posterior half of cell, which is terminated by an oblique white bar, beyond this confluent with a ferruginous-orange patch resting on costa just before apex: cilia pale yellow-ochreous (injured). Hindwings light ochreous-rosy; cilia pale yellow-ochreous.

1 ex., Taperinha, July. Allied to *notandella* Busck.

**Eomichla irenella** Busck Proc. U. S. Mus. XL, 209, pl. VIII, 17 (1911).

2 ex., Taperinha, July. Both ♂, 18 mm; antennae grey or white above; palpi with terminal joint and apex of second white; hindwings light bronzy-grey, veins and margin dark grey, cilia pale greyish, outer half white. French Guiana.

**Machimia neuroscia** n. sp. Pl. II, f. 28.

♂. 18 mm. Head, thorax brown. Palpi rosy-whitish sprinkled dark fuscous, basal third of second joint dark fuscous. Antennal ciliations  $1\frac{1}{2}$ . Forewings elongate, posteriorly dilated, apex obtuse, termen rather obliquely rounded; 2 and 3 rather remote; brown with faint pinkish tinge; a blackish dot on base of costa; stigmata moderate, blackish, plical obliquely beyond first discal, second discal forming a transverse mark; a rather strongly cur-

ved series of blackish dots from near costa at  $\frac{3}{4}$  to dorsum before tornus: cilia light grey, base pink. Hindwings grey, thinly scaled, especially towards base, veins and terminal edge dark grey; cilia grey, paler towards tips.

1 ex., Taperinha, August. Perhaps nearest *furva*.

**Machimia satura** Meyr. Exot. Micr. I, 182 (1914).

3 ex., Taperinha, July, August. Guiana, Upper Amazon.

**Machimia sciotoxa** Meyr. Exot. Micr. I, 180 (1914).

4 ex., Taperinha, June—September. Guiana, Upper Amazon.

**Machimia trunca** n. sp. Pl. II, f. 8.

♂. 15 mm. Head, thorax light ochreous-brownish. Palpi pale ochreous tinged rosy and thinly sprinkled dark fuscous, basal third of second joint dark fuscous. Antennal ciliations  $1\frac{1}{2}$ . Forewings elongate-triangular, apex obtuse, termen slightly rounded, hardly oblique; 2 and 3 connate; light reddish-brown, infuscated along costa except near apex; stigmata small, blackish, plical obliquely beyond first discal, second discal represented by two white dots transversely placed and connected by dark fuscous scales; a curved series of small blackish dots from beneath costa at  $\frac{3}{4}$  to dorsum before tornus, indented towards costa: cilia light flesh-colour, on termen dark grey with black basal line. Hindwings pale ochreous posteriorly suffused light rosy; cilia light ochreous-yellowish, slightly rosy-tinged towards base.

1 ex., Taperinha, July. Somewhat intermediate in character between *sciotoxa* and *flava*, but smaller and narrower-winged than either.

**Machimia flava** Zell. Isis 1839, 195.

1 ex., Taperinha, June. Colombia, Peru, Guiana, Brazil.

**Machimia incensatella** Walk. Cat. XXIX, 728 (1864).

♂. 16—17 mm. Differs from *cupidinea* Meyr. ♂ chiefly in having structure of hindwings normal, viz. veins 3 and 4 connate, 5—7 parallel, no round pale ochreous spot at base of 7, otherwise very similar.

2 ex., Taperinha, July, August. Upper Amazon.

**Machimia inflammata** Meyr. Exot. Micr. I, 551 (1916).

1 ex., Taperinha, June. Guiana, Upper Amazon.

**Machimia signifera** Meyr. Exot. Micr. I, 177 (1914).

2 ex., Taperinha, June, July. Guiana. The hindwings of these are more crimson-tinged than in Guiana specimens.

**Machimia trifurcata** Meyr. Exot. Micr. II, 215 (1918).

1 ex., Taperinha, July. Guiana, Upper Amazon.

**Machimia corallina** Meyr. Exot. Micr. I, 175 (1914).

3 ex., Taperinha, July. Guiana, Upper Amazon.

**Maclimia textrina** Meyr. Exot. Micr. I, 177 (1914).

1 ex., Taperinha, June. Guiana, Lower Amazon.

**Lysigrapha capsaria** Meyr. Exot. Micr. I, 185 (1914).

8 ex., Taperinha, June, July. Colombia, Guiana.

**Hypercallia eurydryas** Meyr. Exot. Micr. III, 314 (1926).

1 ex., Taperinha, June. Colombia.

**Hypercallia melobaphes** Wals. Biol. Centr. Amer. IV, 129, pl. IV, 27 (1912);  
*vexillata* Meyr. Trans. Ent. Soc. Lond. 1913, 179.

2 ex., Taperinha, June, July. Guatemala, Panama, Guiana, Venezuela, Colombia, Brazil, Bolivia, Peru.

**Struthoscelis semiotarsa** Meyr. Exot. Micr. I, 545 (1916).

4 ex., Taperinha, July. Guiana, Lower Amazon.

**Paepia carpocapsella** Walk. Cat. XXIX, 829 (1864).

1 ex., Taperinha, June. This genus and species (of which Walker's example is the only one hitherto known to me) is now seen to be clearly a derivative of the *quercicella* group of *Cryptolechia*, differing from it only in the loss of vein 7 of forewings (coincident with 8).

#### Xyloryctidae.

All the following belong to the subfamily *Stenomides*.

**Antaeotricha exusta** Meyr. Exot. Micr. 1, 492 (1916).

2 ex., Taperinha, July. French Guiana.

**Antaeotricha arachniotis** n. sp. Pl. I, f. 5.

♂. 23 mm. Head pale ochreous, crown centrally suffused white, face fuscous with a small whitish spot on each side. Palpi white, second joint with basal half greyish-ochreous externally and apex greyish, terminal joint greyish anteriorly with dark grey basal band. Antennal ciliations  $\frac{2}{3}$ . Thorax pale brownish-ochreous partially tinged whitish. Forewings elongate, costa moderately arched, apex obtuse, termen nearly straight, somewhat oblique; 7 to apex; brownish-ochreous; costal edge whitish from  $\frac{1}{4}$  to  $\frac{2}{3}$ ; basal fourth suffusedly marbled dark brown; dorsum whitish-ochreous from base to middle, above this a streak of dull olive greenish to dorsum beyond middle, tinged whitish near base, edged brown above at apex; a streak of brown suffusion in cell posteriorly; slender irregular white interneural streaks beyond cell, terminated shortly before a fine strongly curved slightly waved whitish line running from before middle of costa to tornus, somewhat edged brown anteriorly in disc; costa posteriorly and termen brownish: cilia pale ochreous tinged whitish towards tips, a brownish median shade. Hindwings grey, paler at base; costa rather expanded on basal  $\frac{2}{3}$ , with very strong projecting tuft of light greyish hairscales, an expansible sub-

costal pencil of whitish hairs reaching  $\frac{2}{3}$ ; cilia grey-whitish with grey basal shade, round apex pale ochreous with tips whitish.

1 ex., Taperinha, July. A distinct species, apparently belonging to the group of *malachita*.

**Antaeotricha malachita** Meyr. Exot. Micr. I, 404 (1915).

3 ex., Taperinha, July. Guiana.

**Antaeotricha lacertosa** Meyr. Exot. Micr. I, 404 (1915).

4 ex., Taperinha, June—August. Guiana.

**Antaeotricha pellocoma** Meyr. Exot. Micr. I, 387 (1915).

1 ex., Taperinha, June. Guiana, Bolivia, Lower Amazon.

**Antaeotricha acrograpta** Meyr. Exot. Micr. I, 387 (1915).

2 ex., Taperinha, June. Guiana.

**Antaeotricha mesostrota** Meyr. Trans. Ent. Soc. Lond. 1911, 708 (1912), Exot. Micr. 1, 393 (1915).

4 ex., Taperinha, June, July. Venezuela, Guiana, Upper Amazon.

**Antaeotricha amphizyga** n. sp. Pl. II, f. 12.

♀. 16 mm. Head whitish, a grey mark on each side of face, crown suffused grey except on sides. Palpi white, second joint grey except apex, base of terminal joint grey. Thorax grey, shoulders and outer edge of tegulae white. Forewings elongate, costa gently arched, apex rounded, termen rounded, little oblique; 7—9 separate; dull white; markings of dark fuscous mottling suffused grey; a dot on base of costa; a broad irregular oblique almost basal fascia continued on dorsal  $\frac{2}{5}$  of wing to unite with a broad slightly sinuate fascia from  $\frac{2}{3}$  of costa to dorsum before tornus, second fascia mixed white internally on upper half and carrying a black discal dot surrounded by white on anterior edge; a suffused spot from costa before upper part of termen, posterior edge waved and leaving termen white: cilia whitish with two grey shades, darker and suffused together above apex. Hindwings grey; cilia grey-whitish, a grey subbasal shade.

1 ex., Pará, Belem, May. Probably allied to *thesmophora*.

**Antaeotricha phaeosaris** Meyr. Exot. Micr. I, 394 (1915), 492 (1916).

1 ex., Taperinha, June. Guiana. Trinidad.

**Antaeotricha anaclintris** Meyr. Exot. Micr. I, 499 (1916).

3 ex., Taperinha, June, July. Guiana, Bolivia.

**Antaeotricha fascicularis** Zell. Linn. Ent. IX, 393, pl. III, 32, 33 (1854); *Gunni* Busck Proc. U. S. Mus. XL, 218, pl. VIII, 4 (1911); *leucogramma* Meyr. Exot. Micr. I, 404 (1915) (♀).

4 ex., Taperinha, June, July. Guatemala, Guiana, Ecuador, Upper Amazon.

**Antaeotricha walchiana** Cram. Pap. Exot. IV, pl. 384 F. (1782); *lativittella* Walk. Cat. XXIX, 720 (1864).

1 ex., Taperinha, June. Panama, Venezuela, Guiana, Brazil, Peru.

**Antaeotricha griseana** Fabr. Ent. Syst. III (2), 265 (1794); *walchiana* Zell. Linn. Ent. IX, 391, pl. III, 29, 30 (1854).

3 ex., Taperinha, June—August. Panama, Trinidad, Guiana, Colombia, Bolivia, Brazil.

**Antaeotricha milictis** Meyr. Exot. Micr. III, 163 (1925).

2 ex., Taperinha, June. Colombia, Upper Amazon.

**Antaeotricha basalis** Zell. Linn. Ent. IX, 398 (1854); *herilis* Feld. Reis. Nov. pl. CXXXVIII, 66 (1875).

2 ex., Taperinha, June, August. Guiana, Upper Amazon.

**Antaeotricha excisa** Meyr. Exot. Micr. I, 496 (1916).

1 ex., Taperinha, June. Guiana.

**Antaeotricha laudata** Meyr. Exot. Micr. I, 496 (1916).

1 ex., Taperinha, August. Guiana, Bolivia, Upper Amazon.

**Antaeotricha oxycentra** Meyr. Exot. Micr. I, 497 (1916).

2 ex., Taperinha, July, August. Guiana.

**Antaeotricha cantharitis** Meyr. Exot. Micr. I, 490 (1916).

1 ex., Taperinha, June. Guiana.

**Antaeotricha purulenta** Zell. Hor. Ross. XIII, 318, pl. IV, 97 (1877).

1 ex., Taperinha, July. Guiana, Upper and Lower Amazon.

**Antaeotricha adjunctella** Walk. Cat. XXIX, 726 (1864); *additella* ibid. 727; *absconditella* ibid. 727.

1 ex., Taperinha, August. Guiana, Upper and Lower Amazon.

**Antaeotricha quatiens** n. sp. Pl. I, f. 6.

♀. 26 mm. Head light greyish-ochreous, crown centrally suffused whitish, lower part of face whitish. Palpi white, second joint externally greyish-ochreous except tip, terminal joint with basal half and tip grey. Antennal ciliations 1. Thorax greyish-ochreous, lateral and posterior edge whitish. Forewings elongate, costa moderately arched, apex obtuse, termen straight, somewhat oblique; 7 to apex; greyish-ochreous; costal edge finely whitish from  $\frac{1}{4}$  to  $\frac{2}{3}$ ; a more or less developed very fine white line along fold; basal third above this brownish, terminated by an erect dark fuscous streak not reaching costa, suffused anteriorly and whitish-edged posteriorly, a white marking between its anterior edge and costa; within this area a light spot beneath costa tinged whitish beneath and edged darker brown on both sides; subbasal tuft of dorsum whitish-ochreous; an irregular suprmedian streak of dark fuscous suffusion from  $\frac{1}{3}$  to  $\frac{2}{3}$ , edged at anterior extremity by a white mark, above this a series of short interneural white lines extended

as curved irregular interrupted line to dorsum before tornus; a fine white median longitudinal line in posterior half of cell, terminated by a small spot of fuscous suffusion; an elongate wedge-shaped blackish dorsal spot about middle; a fine irregular blackish line from lower angle of cell to dorsum, edged whitish anteriorly; two small whitish marks beneath costa towards apex, some brownish costal suffusion beyond this; a fine waved whitish terminal line edged fuscous posteriorly and preceded by a small fuscous tornal spot: cilia light greyish-ochreous becoming ochreous-whitish on outer half, basal half obscurely barred fuscous. Hindwings light grey; basal  $\frac{2}{3}$  of costa rather expanded, with very strong projecting tuft of long greyish hairscales, an expansible subcostal pencil of grey-whitish hairs reaching  $\frac{2}{3}$ ; cilia whitish-ochreous, becoming whitish on outer half.

1 ex., Taperinha, July. Nearly approaching *mentigera* from Bolivia, which however has forewings shorter and relatively broader, termen still less oblique.

***Antaeotricha cynomorpha* Meyr.** Exot. Micr. III, 169 (1925).

1 ex., Taperinha, July, very worn but recognisable. Lower Amazon.

***Antaeotricha deltopis* Meyr.** Exot. Micr. I, 390 (1915).

1 ex., Taperinha, July. Guiana, Lower Amazon.

***Antaeotricha reciprocella* Walk.** Cat. XXIX, 731 (1864).

2 ex., Taperinha, July. Guiana, Upper Amazon.

***Antaeotricha chelobathra* Meyr.** Exot. Micr. I, 498 (1916).

29 ex., Taperinha, June—September. Guiana, Bolivia, Upper Amazon.

***Antaeotricha phryactis* Meyr.** Exot. Micr. III, 167 (1925).

1 ex., Taperinha, June. Upper Amazon.

***Antaeotricha sardania* Meyr.** Exot. Micr. III, 168 (1925).

2 ex., Taperinha, June. Upper and Lower Amazon.

***Antaeotricha superciliosa* Meyr.** Exot. Micr. II, 198 (1918).

1 ex., Taperinha, June. Guiana.

***Antaeotricha hemitephras* n. sp.** Pl. I, f. 7.

♂ 25 mm. Head grey-whitish. Palpi whitish, second joint grey except tip, terminal joint suffused grey towards base. Antennal ciliations hardly 1. Thorax greyish. Forewings elongate, costa gently arched, apex rounded-obtuse, termen rounded, little oblique; dull white, dorsal half irregularly suffused light ochreous-grey, more narrowly posteriorly but on termen extended as a narrow suffusion to apex; subbasal tuft of dorsum tinged ferruginous posteriorly; a small darker grey spot on middle of dorsum; a transverse nearly interrupted dark grey dot on end of cell, resting on greyish area, which is cut beneath it by an indistinct oblique whitish line, followed by some darker grey suffusion; a greyish shade from costa before  $\frac{2}{3}$  to tornus, pale towards costa and interrupted above middle, rather curved on

lower portion, this and terminal extension somewhat darker-barred; a dark grey marginal dot just above apex: cilia greyish, on costa white. Hindwings light grey; a strong grey subcostal tuft from base reaching to beyond middle, lying beneath forewings, basal half of wing expanded beneath this with broad strong projection of grey scales; cilia light grey, round apex white.

1 ex., Breves, Amazons Delta, September. Allied to *semicinerea* and *binubila*.

**Antaeotricha addon** Busck Proc. U. S. Mus. XL, 221, pl. IX, 36 (1911).

5 ex., Taperinha, July. Guiana, Upper and Lower Amazon.

**Antaeotricha aporodes** Meyr. Exot. Micr. I, 400 (1915).

2 ex., Taperinha, June, July. Guiana, Lower Amazon.

**Antaeotricha episimbla** Meyr. Exot. Micr. I, 389 (1915).

4 ex., Taperinha, June, August. Guiana, Bolivia, Upper and Lower Amazon.

**Antaeotricha costatella** Walk. Cat. XXIX, 737 (1864).

2 ex., Taperinha, June, July. Upper and Lower Amazon.

**Antaeotricha palaestrias** Meyr. Exot. Micr. I, 502 (1916).

6 ex., Taperinha, June—August. Guiana, Upper and Lower Amazon.

**Antaeotricha amphilyta** Meyr. Exot. Micr. I, 503 (1916).

2 ex., Taperinha, June, July. Guiana.

**Antaeotricha aglypta** Meyr. Exot. Micr. III, 174 (1925).

1 ex., Taperinha, September. Upper Amazon.

**Loxotoma elegans** Zell. Linn. Ent. IX, 384, pl. III, 22, 23 (1854).

4 ex., Taperinha, July, August. Colombia, Venezuela, Guiana, Brazil, Peru.

**Paraspastis circographa** Meyr. Exot. Micr. I, 480 (1915).

2 ex., Taperinha, July. British Guiana.

**Promenesta leucomias** Meyr. Exot. Micr. III, 162 (1925).

1 ex., Taperinha, July. Lower Amazon.

**Promenesta lithochroma** Busck Proc. U. S. Mus. XLVII, 22 (1914).

1 ex., Pernambuco, April. Panama.

**Eumiturga flocculosa** Meyr. Exot. Micr. III, 178 (1925).

1 ♂ ex., Taperinha, July: Antennae ♂ with small flattened and slightly hollowed nodosity towards base of stalk; forewings ♂ 10 and 11 short-stalked from beyond middle, 12 absent. These characters are omitted in my original description; the specimens then described included only one ♂, in which the antennal swelling is much less developed, and the fact that the ♂ differed from the ♀ in neuration was unfortunately overlooked. In

view of these peculiarities I now consider that *commutata* Meyr. (Exot. Micr. III, 233), which was placed in *Eumiturga* as agreeing otherwise in structure, but does not possess these sexual characters, and has the normal facies of *Stenoma*, should be transferred to that genus, making *Eumiturga* monotypic.

**Pomphocrita n. g.**

Head smooth, sidetufts slightly raised; ocelli posterior; tongue developed. Antennae  $\frac{5}{6}$ , ♂ moderately fasciculate-ciliated, scape moderate, without pecten. Labial palpi very long, recurved, second joint reaching base of antennae, thickened with appressed scales, terminal joint shorter than second, moderate, pointed. Maxillary palpi very short, filiform, appressed to tongue. Posterior tibiae slightly rough-scaled above. Forewings 2 and 3 short-stalked from angle, 4 closely approximated, 6 to apex (indefinite), 7 and 8 stalked, 11 from middle. Hindwings  $1\frac{1}{4}$ , subovate, cilia  $\frac{1}{6}$ ; 3 and 4 connate, 5 near and approximated at base, 6 and 7 nearly approximated at base.

A derivative of *Stenoma*.

**Pomphocrita obsordescens n. sp.** Pl. I, f. 8.

♂. 18 mm. Head, thorax pale greyish-ochreous, face and forehead whitish. Palpi second joint whitish-grey-ochreous, terminal joint greyish, towards apex whitish. Antennal ciliations 1. Forewings moderate, costa strongly and evenly arched, apex rounded, termen rather obliquely rounded; pale greyish-ochreous; costa slenderly whitish-ochreous from base to apex and finely continued round termen, edged beneath slenderly with rather dark grey suffusion, beneath this some broader whitish-ochreous suffusion towards base; dorsal area broadly suffused pale ochreous-yellowish; a triangular reddish-fuscous spot on dorsum before middle; a greyish mark on transverse vein (cilia injured). Hindwings light grey; cilia pale greyish.

1 ex., Taperinha, June.

**Stenoma crypsastra Meyr.** Exot. Micr. I, 414 (1915).

1 ex., Santarem, September. This example has a small white spot on base of abdomen, and a white discal dot in end of cell in forewings, which is also perceptible in the original specimen (in poor condition), but not mentioned in my description; the white discal spot of hindwings forms a transverse blotch reaching to costa. Guiana.

**Stenoma notosaris Meyr.** Exot. Micr. III, 181 (1925), 240 (1926).

1 ex., Pará, Belem, May. Only from Pará.

**Stenoma monosaris Meyr.** Exot. Micr. I, 419 (1915).

2 ex., Taperinha, June. Guiana, Upper and Lower Amazon.

**Stenoma thylacosaris Meyr.** Exot. Micr. I, 419 (1915).

2 ex., Taperinha, June, July. Guiana.



**Stenoma ptycta** Wals. Biol. Centr. Amer. IV, 156, pl. V, 22 (1912); *dryotechna* Meyr. Exot. Micr. I, 421 (1915).

3 ex., Taperinha, June, July. Guatemala, Panama, Trinidad, Guiana, Brazil, Ecuador, Peru.

**Stenoma spurca** Zell. Linn. Ent. X, 155, pl. I, 5 (1855) (♀); *humiferella* Walk. Cat. XXIX, 735 (1864) (♂); *Erschoffii* Zell. Hor. Ross. XIII, 300, pl. III; 87 (1877) (♂).

3 ex., Taperinha, June, July. Colombia, Guiana, Brazil, Peru.

**Stenoma phaeoplintha** Meyr. Exot. Micr. I, 424 (1915).

12 ex., Taperinha, June, July. British Guiana.

**Stenoma tephrodesma** Meyr. Exot. Micr. I, 511 (1916).

2 ex., Taperinha, June, August. Guiana, Lower Amazon.

**Stenoma tanysta** Meyr. Exot. Micr. I, 402 (1915), III, 189 (1925); *anticharis* ibid. I, 512 (1916).

2 ex., Taperinha, June, July. Guiana, Upper and Lower Amazon.

**Stenoma lepidocarpa** n. sp. Pl. I, f. 9.

♂. 19 mm. Head fuscous, face white. Palpi white, second joint with dark fuscous lateral streak on basal  $\frac{2}{3}$ , terminal joint with tip anteriorly and base grey. Antennal ciliations 1—1½. Thorax fuscous, humeral edge whitish. Forewings elongate, slightly narrowed posteriorly, costa gently arched, apex rounded, termen rounded, little oblique; 7 to apex (indefinite); rather dark fuscous with faint purplish tinge; extreme costal edge whitish; three obscure darker slightly sinuate oblique transverse lines, first from before  $\frac{1}{3}$  of costa to beyond middle of dorsum, second from beyond middle of costa to  $\frac{4}{5}$  of dorsum, third from  $\frac{3}{4}$  of costa to tornus, edged posteriorly with slight whitish tinge, second discal stigma forming a dark fuscous dot on second line preceded by a whitish dot; a marginal series of indistinct dark fuscous dots round apical part of costa and termen: cilia grey-whitish, a pale grey subbasal shade. Hindwings 3 and 4 connate; dark grey; an elongate-oval blotch of pale greyish-ochreous modified scales in middle of disc, connected with costa by a pale area; costal area from base to  $\frac{2}{3}$  forming a broad expansion edged with whitish scales; cilia grey, round apex and upper part of termen whitish on outer half. Forewings beneath with tuft of long whitish hairscales rising from beneath anterior part of cell and reaching to beyond middle, subdorsal area surrounding it dark grey, covered by expansion of hindwings.

1 ex., Taperinha, July. A quite peculiar form, probably allied to *insidiata* Meyr.

**Stenoma bathrotoma** Meyr. Exot. Micr. III, 189 (1925).

3 ex., Taperinha, July. Lower Amazon (Obidos).

**Stenoma syngraphosis n. sp.** Pl. I, f. 10.

♂♀. 15—19 mm. Head, thorax ochreous-white. Palpi white, second joint tinged grey except apex. Antennal ciliations ♂ 3. Forewings elongate, slightly dilated, costa gently arched, apex rounded-obtuse, termen rather obliquely rounded; 2—4 closely approximated from angle, 7 to apex (indefinite), 8 and 9 approximated; ochreous-whitish slightly grey-sprinkled in disc and posteriorly; a small dark fuscous dot on base of costa; a slender curved dark fuscous streak from base in middle to angle of a dark fuscous trapezoidal spot on middle of dorsum, fold sometimes suffused fuscous above this; discal stigmata small, cloudy, dark fuscous, beneath second an additional dot, towards which are directed slender suffused dark fuscous streaks from posterior angle of median dorsal spot, and from a triangular dark fuscous or brownish tornal spot, dorsal area between these forming a pale-edged blotch of obscure light red-brownish suffusion; a slender irregular zigzag grey streak from middle of costa towards second discal stigma; a marginal series of small blackish-grey interneural spots round posterior part of costa and termen to before tornus: cilia ochreous-whitish, partially tinged grey in certain lights. Hindwings pale grey; cilia grey-whitish, a greyer subbasal shade.

4 ex., Taperinha, June. A distinct form, perhaps allied to *pernocarpa* Meyr.

**Stenoma cymogramma** Meyr. Exot. Micr. III, 193 (1925).

1 ex., Taperinha, June. Guiana, Upper Amazon.

**Stenoma similis** Busck. Proc. U. S. Mus. XL, 222, pl. IX, 43 (1911).

1 ex., Taperinha, July. Guiana, Upper Amazon.

**Stenoma juvenalis n. sp.** Pl. II, f. 13.

♂. 17 mm. Head, thorax white. Palpi white, second joint with fuscous posterior streak on basal half. Antennal ciliations 2. Forewings elongate, rather narrowed posteriorly, costa anteriorly strongly arched, then faintly sinuate, apex rounded, termen somewhat obliquely rounded; 7—9 separate; shining white; markings fuscous; a small cloudy spot beneath costa at  $\frac{1}{5}$ , and one on dorsum at  $\frac{1}{4}$ ; a strong dash in disc before middle; a triangular blotch on dorsum beyond middle, reaching nearly half across wing; a slightly curved longitudinal line from disc above middle to meet a very oblique line from beneath costal edge at  $\frac{3}{5}$  which is curved round beneath to posterior angle of a subquadrate spot on tornus, its anterior angle emitting a linear projection; two small oval dark fuscous spots above apex: cilia white, above apex a dark fuscous basal shade. Hindwings 3 and 4 short-stalked; white; a greyish almost apical dot; cilia white, a grey subbasal shade round apex.

1 ex., Taperinha, July. Somewhat allied to *reductella*.

**Stenoma reductella** Walk. Cat. XXIX, 721 (1864); *phoebe* Busck Proc. U. S. Mus. XL, 222, pl. IX, 42 (1911).

2 ex., Taperinha, June, August. Guiana, Upper and Lower Amazon.

**Stenoma isoplintha** Meyr. Exot. Micr. III, 193 (1925).

3 ex., Taperinha, June. Lower Amazon (Parintins).

**Stenoma tectoria** Meyr. Exot. Micr. I, 429 (1915).

2 ex., Taperinha, August. Guiana.

**Stenoma lebetias** Meyr. Exot. Micr. I, 433 (1915).

1 ex., Taperinha, August. Guiana, Upper and Lower Amazon.

**Stenoma disjecta** Zell. Linn. Ent. IX, 368 (1854); *intersecta* Meyr. Exot. Micr. I, 515 (1916).

1 ex., Taperinha, July. Guiana, Brazil, Bolivia.

**Stenoma umbrinervis** n. sp. Pl. II, f. 14.

♂. 17 mm. Head ochreous-yellow, face whitish. Palpi violet-grey, second joint with whitish lateral line, terminal joint whitish posteriorly. Antennal ciliations  $1\frac{1}{2}$ . Thorax light grey, lateral edge ochreous-whitish. Forewings moderate, slightly narrowed anteriorly, costa moderately arched, apex rounded-obtuse, termen somewhat obliquely rounded; 7 to apex (indefinite); whitish-grey, all veins and dorsal edge marked with violet-grey streaks; costal edge and subcostal pale line tinged yellowish at base: cilia whitish-grey. Hindwings 3 and 4 short-stalked; light grey; cilia whitish-grey.

1 ex., Taperinha, July. Perhaps allied to *phaeoneura* Meyr.

**Stenoma venata** Busck Proc. U. S. Mus. XL, 217, pl. VIII, 14 (1911).

1 ex., Taperinha, June. Guiana, Bolivia.

**Stenoma renselariana** Cram. Pap. Exot. IV, pl. 348 H (1781).

1 ex., Taperinha, July. Panama, Trinidad, Guiana, Venezuela, Brazil, Paraguay.

**Stenoma orthocapna** Meyr. Trans. Ent. Soc. Lond. 1911, 717.

1 ex., Taperinha, June. Guiana.

**Stenoma thysanodes** Meyr. Exot. Micr. I, 434 (1915).

2 ex., Taperinha, June. Guiana.

**Stenoma recurvella** Walk. Cat. XXIX, 717 (1864); *pseudacma* Meyr. Exot. Micr. II, 203 (1918).

3 ex., Taperinha, July—September. Colombia, Guiana, Upper and Lower Amazon.

**Stenoma siraphora** Meyr. Exot. Micr. I, 475 (1915).

1 ex., Taperinha, August. Guiana.

*Stenoma salutaris* Butl. Cist Ent. II, 188 (1877); *maroni* Busck. Proc. U. S. Mus. XL, 220, pl. IX, 23 (1911).

2 ex., Taperinha, July, August. Guiana, Upper and Lower Amazon.

*Stenoma astacopsis* n. sp. Pl. I, f. 11.

♂♀. 26—29 mm. Head whitish-ochreous, face whitish. Palpi whitish, second joint violet-fuscous except apex. Antennal ciliations ♂ 1. Thorax light brownish-ochreous. Forewings moderate, slightly dilated, costa gently arched, apex obtuse, termen straight, vertical; 8 to apex; light brownish-ochreous; a slight fuscous-purplish mark on costa at  $\frac{1}{4}$ ; a broad oblique band more or less suffused brownish, anterior edge formed by a suffused fuscous-purplish streak from middle of costa to  $\frac{1}{4}$  of dorsum, posterior by a triangular or trapezoidal fuscous-purplish blotch occupying posterior third of costa, within the band a pale semicircular antemedian dorsal blotch marked posteriorly by two curved suffused dark grey bars; second discal stigma grey or purplish, followed by a dot of pale suffusion; a light greyish shade running round this dot posteriorly, then continued as a distinct rather oblique grey line from beneath it to dorsum, where it meets a curved grey line or shade from costal blotch to dorsum near tornus, indented below middle; a terminal series of grey dots: cilia purple-grey, on tornus pale greyish. Hindwings grey, paler or ochreous-whitish anteriorly; cilia pale greyish or whitish-grey, tinged purplish round apex. Forewings beneath with whitish-grey-ochreous subdorsal hairpencil from base reaching lower angle of cell, concealed beneath rather expanded costal area of hindwings.

2 ex., Taperinha, August, September; also 7 ex. in my Coll. from R. Maroni, French Guiana, and Teffé and Matura, Brazil. Allied and very similar to *salutaris*, but larger, costa of forewings somewhat more arched, and in *salutaris* the subdorsal hairpencil of forewings is longer and reaches well beyond cell; the easiest distinction is in the irregular grey or purplish line beyond cell, which in *salutaris* reaches dorsum at  $\frac{2}{3}$ , and is roughly parallel to the following line, whilst in *astacopsis* the two lines meet on dorsum.

*Stenoma meridogramma* n. sp. Pl. I, f. 12.

♂♀. 23—26 mm. Head light purplish-grey, face whitish. Palpi whitish, second joint light lilac-grey except tip, terminal joint greyish anteriorly. Antennal ciliations ♂ 1. Thorax purplish. Forewings moderate, posteriorly dilated, costa slightly arched, apex obtuse, termen hardly sinuate, vertical; 2 almost from angle, 8 to termen; light grey, suffused dull bronzy-purplish except towards anterior  $\frac{3}{5}$  of costa and along termen, an oblique irregular bronzy-purplish shade from costa at  $\frac{1}{3}$ ; costal edge ochreous-whitish, with two blackish areas on posterior half and a linear mark before apex; second discal stigma forming an obscure darker purplish mark preceded by light greyish; a curved series of cloudy darker grey marks from costa at  $\frac{4}{5}$  to tornus sometimes perceptible; an interrupted blackish terminal line: cilia

light greyish. Hindwings rather dark grey; cilia pale grey, a darker sub-basal shade.

2 ex., Taperinha. June, August. Nearest *clysmographa* Meyr., which however has not the costal whitish edge or black marks.

**Stenoma notogramma n. sp.** Pl. I, f. 13.

♀. 24 mm. Head violet-whitish, sides of face tinged ochreous. Palpi second joint pale greyish, terminal joint white, extreme base grey. Thorax violet-grey-whitish, a round black posterior spot enclosing whitish apex. Abdomen grey, anal tuft pale ochreous. Forewings suboblong, costa anteriorly moderately arched, apex rounded-obtuse, termen slightly rounded, hardly oblique; 7 to apex (indefinite); violet-whitish-grey; costal edge fuscous from base to  $\frac{4}{5}$ , extreme edge grey-whitish; some slight brownish suffusion towards costa on basal  $\frac{2}{5}$ , terminated by an indistinct direct transverse fuscous shade from costa to fold, thence obliquely and faintly extended to a cloudy fuscous spot on posterior extremity of a slender blackish-fuscous dorsal streak from subbasal tuft to beyond middle; a small fuscous spot on costa at  $\frac{1}{4}$ ; an irregular fuscous shade from before middle of costa to dorsum at  $\frac{4}{5}$ , nearly obsolete on median third but with a small blackish dot indicating second discal stigma, its dorsal extremity dark fuscous; an elongate mark of fuscous suffusion on costa at  $\frac{3}{4}$ , whence a faint grey-whitish curved line, indistinctly edged pale grey anteriorly, runs to tornus, rather indented near costa; a dark fuscous dot on costa near apex: cilia grey-whitish. Hindwings grey; cilia light grey, on apex and costa whitish.

1 ex., Breves, Amazon Delta, September. Of uncertain affinity, perhaps belonging to the *conturbatella* group; distinguished from any similar insects by the blackish dorsal edge.

**Stenoma asthenopa** Meyr. Exot. Micr. I, 517 (1916).

3 ex., Taperinha, June—August. Guiana.

**Stenoma tinctipennis** Butl. Cist. Ent. II, 187 (1877).

1 ex., mouth of Tocantins, May. Rio Negro.

**Stenoma minna** Busck Proc. U. S. Mus. XLVII, 52 (1914); *orthridia* Meyr. Exot. Micr. I, 520 (1916).

4 ex., Taperinha, June, July. Panama, Guiana, Brazil, Bolivia.

**Stenoma fusigera** Meyr. Exot. Micr. I, 476 (1915).

1 ex., Taperinha, July. Guiana.

**Stenoma myrodora** Meyr. Exot. Micr. III, 197 (1925).

2 ex., Taperinha, July, August. Guiana, Upper Amazon.

**Stenoma agraria** Meyr. Exot. Micr. III, 210 (1925).

7 ex., Taperinha, June—August. Variable; in 2 examples the second discal stigma is edged posteriorly by a distinct white dot; a median dorsal blotch of lighter brownish or ochreous suffusion is sometimes variably

developed. In ♂ there is a whitish hairpencil rising from thorax just behind second pair of legs and directed backwards, not mentioned in my description, but visible in the type-specimen. Bolivia.

**Stenoma invigilans** Meyr. Exot. Micr. 1, 476 (1915).

5 ex., Taperinha, July, August. Guiana.

**Stenoma heterosema** n. sp. Pl. I, f. 14.

♂♀. 30 mm. Head whitish-ochreous. Palpi whitish-ochreous, second joint with lateral streak of fuscous suffusion on basal  $\frac{3}{5}$ . Antennal ciliations ♂ 1. Thorax light violet-ochreous. Forewings suboblong, rather dilated posteriorly, costa anteriorly moderately arched, posteriorly nearly straight, apex rounded termen rounded, somewhat prominent; 8 to apex (indefinite); pale violet-grey-yellowish, dorsal half suffused light greyish-violet except towards termen; a straight pale suffused line from costa at  $\frac{1}{5}$  to dorsum at  $\frac{3}{5}$ , edged with greyish-violet or fuscous suffusion posteriorly, more strongly in ♀; a semioval dark fuscous spot on middle of costa; an inwards-oblique light brownish spot from costa at  $\frac{4}{5}$ , becoming dark fuscous and rounded beneath; second discal stigma small, fuscous, transverse or double; a rather curved fine indistinct fuscous line from posterior costal spot to dorsum at  $\frac{4}{5}$  more or less expressed: cilia pale yellowish. Hindwings pale yellowish, dorsal half tinged grey; cilia pale yellowish.

1 ♂, Taperinha, June; also 1 ♀, R. Maroni, French Guiana, in my Coll. Allied to *rosa*.

**Stenoma rosa** Busck Proc. U. S. Mus. XL, 224, pl. IX, 28 (1911).

9 ex., Taperinha, June—September, and mouth of Tocantins, May. Guiana, Upper and Lower Amazon.

**Stenoma contophora** Meyr. Exot. Micr. I, 472 (1915).

5 ex., Taperinha, June, July. Guiana, Bolivia, Upper and Lower Amazon.

**Stenoma adminiculata** Meyr. Exot. Micr. I, 472 (1915).

2 ex., Taperinha, July. One of these has the basal area of forewings as far as the first dark line tinted pale green, becoming pale violet on costa, an exceptional and interesting variety. Guiana.

**Stenoma phyllocosma** Meyr. Exot. Micr. I, 520 (1916).

1 ex., Taperinha, July. Guiana, Upper Amazon.

**Stenoma byssina** Zell. Linn. Ent. X, 165 (1855); *tetragonella* Walk. Cat. XXIX, 723 (1864); *isabella* Feld. Reis. Nov. pl. CXXXIX, 24 (1875).

1 ex., Taperinha, July. Mexico, Grenada, Trinidad, Guatemala, Panama, Colombia, Guiana, Brazil, Peru, Bolivia.

**Stenoma phortax** Meyr. Exot. Micr. I, 383 (1915).

8 ex., Taperinha, June, August. Trinidad, Venezuela, Guiana, Lower Amazon.

**Stenoma sericata** Butl. Cist. Ent. II, 163 (1877); *eminula* Meyr. Exot. I, 473 (1915).

1 ex., Taperinha, June. Guiana, Lower Amazon.

**Stenoma neoperca** n. sp. Pl. I, f. 15.

♂. 25—26 mm. Head violet-white. Palpi grey-whitish. Antennal ciliations 1. Thorax light violet-grey. Forewings rather elongate-triangular, costa hardly arched, apex obtuse-pointed, termen faintly sinuate, little oblique; 8 to termen; violet-fuscous; costal edge ochreous-yellow; some slight irregular irroration of pale grey scales, some accompanying obscure small dark grey stigmata, hardly defined; a faint darker curved subterminal shade preceding some pale grey irroration or suffusion along termen; some indistinct dark grey terminal dots: cilia greyish, on costa above apex ochreous-whitish. Hindwings dark grey; cilia whitish-grey, a grey subbasal shade.

3 ex., Taperinha, August. Notwithstanding the general dark colouring, this interesting form is nearly allied to the *symphonica* group by the peculiar wing-form and neuration.

**Stenoma satelles** Meyr. Exot. Micr. III, 202 (1925).

1 ex., Taperinha, June. Upper Amazon.

**Stenoma gubernata** Meyr. Exot. Micr. I, 465 (1915).

2 ex., Taperinha, August, September. Guiana, Upper Amazon.

**Stenoma pauperatella** Walk. Cat. XXIX, 721 (1864); *diatriba* Wals. Biol. Centr. Amer. IV, 171, pl. VI, 15 (1913); *linteata* Meyr. Exot. Micr. I, 525 (1916); *advocata* ibid. 525 (1916); *anita* Busck Ins. Insc. Menstr. VIII, 93 (1920).

9 ex., Taperinha, July, August, and Furos de Breves. May. Mexico, Costa Rica, Guatemala, Panama, Guiana, Brazil, Peru, Bolivia.

**Stenoma aptila** Meyr. Exot. Micr. I, 467 (1915).

4 ex., Taperinha, June—August. Guiana, Bolivia, Upper Amazon.

**Stenoma anna** Busck Proc. U. S. Mus. XL, 224, pl. IX, 27 (1911).

4 ex., Taperinha, June, July. Guiana.

**Stenoma vita** Busck Proc. U. S. Mus. XL, 226, pl. IX, 26 (1911).

1 ex., Taperinha, August. Guiana.

**Stenoma sequestra** Meyr. Exot. Micr. II, 205 (1918).

1 ex., Taperinha, July. Guiana, Upper Amazon.

**Stenoma ptychobathra** n. sp. Pl. I, f. 16.

♂. 23—25 mm. Head whitish. Palpi whitish, second joint with dark fuscous lateral streak on basal half. Antennal ciliations 1½. Thorax pale greyish-ochreous. Forewings suboblong, slightly dilated posteriorly, costa strongly arched near base, basal fifth narrowly folded over and rough-scaled on edge, then nearly straight, hardly sinuate in middle, apex obtuse,

termen somewhat rounded and slightly prominent; 8 to termen; pale greyish-ochreous; three faint greyish transverse lines, first curved, irregular, from just before end of costal fold to dorsum at  $\frac{2}{5}$ , second from a small brownish spot on costa beyond middle (costal edge fuscous for some distance before this) gently curved beyond cell but obsolete on dorsal third, third represented by a small semioval dark fuscous spot on costa near apex and a hardly curved series near termen of seven indistinct grey dots on veins 1 c to 7; second discal stigma small, grey; cilia pale greyish-ochreous. Hindwings pale grey, becoming pale greyish-ochreous towards base; cilia concolorous.

2 ex., Taperinha, July. A distinct form of the *burmanniana* group.

*Stenoma chionodora* Meyr. Exot. Micr. I, 464 (1915); *rita* Busck Ins. Insc. Menstr. VIII, 92 (1920).

2 ex., Taperinha, July; rather large, 28—29 mm. Guiana.

*Stenoma leucana* Sepp Surin. Vlind. II, 127, pl. LX (1852); *tenera* Zell. Linn. Ent. IX, 364 (1854); *virginalis* Butl. Cist. Ent. II, 192 (1877); *neanica* Wals. Biol. Centr. Amer. IV, 186 (1913).

2 ex., Taperinha, June, July. Mexico, Panama, Trinidad, Venezuela, Guiana, Brazil, Bolivia.

*Stenoma incitatrix* Meyr. Exot. Micr. III, 207 (1925).

1 ex., Taperinha, July. As this specimen is ♀, and the unique type from R. Paraná, Argentina, is ♂, there may be some uncertainty as to the specific identity; the hindwings of the ♀ are rather greyer, as usual in the genus, but the two examples are otherwise quite in accordance.

*Stenoma pleurotricha* Meyr. Exot. Micr. III, 206 (1925).

11 ex., Taperinha, June—August. Upper Amazon.

*Stenoma tectella* Walk. Cat. XXIX, 714 (1864); *thylacandra* Meyr. Exot. Micr. I, 468 (1915).

1 ex., Taperinha, July. Guiana, Upper and Lower Amazon.

*Stenoma expilata* Meyr. Exot. Micr. I, 469 (1915).

1 ex., Taperinha, June. Guiana.

*Stenoma ferrocanella* Walk. Cat. XXIX, 716 (1864).

2 ex., Taperinha, August, September. Panama, Guiana, Upper and Lower Amazon.

*Stenoma coniophaea* n. sp. Pl. I, f. 17.

♂. 28 mm. Head light grey, face suffused whitish. Palpi whitish, second joint light grey except tip. Antennal ciliations 1. Thorax light grey. Forewings rather elongate, slightly dilated, costa hardly arched, apex obtuse, termen straight, faintly waved, little oblique; 7 to termen; light grey sprinkled fuscous; extreme costal edge white except towards apex; plical and second discal stigmata very obscure, grey; a marginal series of dark



grey dots round apex and termen: cilia pale grey, a darker grey subbasal shade. Hindwings grey-whitish, apical edge slightly suffused grey; cilia whitish, round apex tinged grey.

1 ex., Taperinha, September. An obscure insect, probably belonging to the *sororia* group, but discordant in form of wing.

**Stenoma anaxesta** Meyr. Exot. Micr. I, 452 (1915).

1 ex., Taperinha, June. Guiana, Upper Amazon.

**Stenoma gymnastis** Meyr. Exot. Micr. I, 453 (1915).

3 ex., Taperinha, August. Guiana.

**Stenoma catapsecta** Meyr. Exot. Micr. I, 452 (1915).

3 ex., Taperinha, June. Colombia, Guiana, Bolivia, Upper and Lower Amazon.

**Stenoma nonagriella** Walk. Cat. XXIX, 715 (1864); *argillacea* Zell. Hor. Ross. XIII, 266 (1877); *praecauta* Meyr. Exot. Micr. I, 527 (1916).

2 ex., Taperinha, August. Panama, Colombia, Guiana, Brazil, Peru.

**Stenoma explicita** n. sp. Pl. I, f. 18.

♂. 19 mm. Head ochreous-whitish, face whiter, sidetufts pale greyish-ochreous. Palpi ochreous-whitish, second joint suffused light grey except apex, terminal joint with extreme base dark grey, anterior edge greyish. Antennal ciliations  $2\frac{1}{2}$ . Thorax light greyish-ochreous. Forewings moderate, slightly dilated, costa gently arched, apex rounded, termen rounded, little oblique; 2 from angle, 7 to apex (indefinite); whitish-ochreous closely irrorated grey, appearing light greyish-ochreous; extreme costal edge ochreous-whitish; stigmata blackish, plical very obliquely beyond first discal, a dark grey dot towards costa rather beyond first discal, a short fine grey dash in disc beyond first discal; a curved transverse series of faint greyish linear marks beyond cell, towards costa indented and forming two or three more distinct grey dots; a curved series of grey dots from costa at  $\frac{4}{5}$  to dorsum near tornus, sinuate-indented towards costa; a marginal series of blackish dots from one end of this to the other; cilia pale greyish-ochreous, tips whitish. Hindwings rather dark grey: cilia light grey, a darker subbasal shade.

1 ex., Taperinha, July. Allied to *acribota*, but certainly distinct by much longer antennal ciliations.

**Stenoma acribota** n. sp. Pl. I, f. 19.

♂♀. 20—24 mm. Head fuscous-whitish, face whiter. Palpi whitish, basal  $\frac{3}{5}$  of second joint grey, terminal joint greyish anteriorly. Antennal ciliations ♂ 1. Thorax pale greyish, sometimes ochreous-tinged. Forewings moderate, slightly dilated, costa gently arched, apex rounded-obtuse, termen rounded, hardly oblique; 2 from angle, 7 to termen; pale greyish, sometimes faintly ochreous-tinged; extreme costal edge whitish except near extremities; stigmata blackish, plical very obliquely beyond first discal;

a cloudy dark grey dot towards costa rather beyond first discal; a very obscure irregular cloudy grey shade, from beyond middle of costa to middle of dorsum, excurved beyond cell; a cloudy waved grey line sometimes marked with dark fuscous dots from costa at  $\frac{4}{5}$  to dorsum before tornus, excurved in disc, sinuate-indentured towards costa and dorsum; a marginal series of blackish dots from one end of this to the other; cilia whitish, basal half tinged pale greyish. Hindwings dark grey; cilia pale grey, a grey sub-basal shade.

4 ex. (all ♀), Taperinha, August, September; also a series in my Coll. from R. Maroni, French Guiana; Bartica and Mallali, British Guiana; Matara, Brazil; Chanchamayo, and Contamano, R. Ucayali, Peru. Distinguished from similar species (as *nonagriella*) by the unusually dark hindwings.

**Stenoma invulgata** Meyr. Exot. Micr. I, 458 (1915).

2 ex., Taperinha, July. Venezuela, Guiana.

**Stenoma plebicola** Meyr. Exot. Micr. II, 205 (1918).

2 ex., Taperinha, July, August. Guiana.

**Stenoma entephras** Meyr. Exot. Micr. I, 453 (1915).

4 ex., Taperinha, June, July. British Guiana.

**Stenoma porinodes** Meyr. Exot. Micr. I, 454 (1915).

5 ex., Taperinha, June—August. Guiana, Brazil, Peru.

**Stenoma sublunaris** n. sp. Pl. I, f. 29.

♂. 23 mm. Head, thorax whitish-violet. Palpi white, second joint violet-grey externally, terminal joint violet-grey anteriorly except towards base, extreme base dark grey. Antennal ciliations 1. Forewings moderate, slightly dilated, costa gently arched, apex obtuse, termen slightly rounded, little oblique; 2 from angle, 7 to termen; pale violet-grey with whitish reflections, irrorated grey; costal edge pale grey-yellowish, near base dark grey; plical and second discal stigmata small, cloudy, dark fuscous; an irregularly sinuate fuscous shade from beneath costal edge at  $\frac{2}{3}$ , passing behind second discal, obsolete towards dorsum; a rather curved connected series of cloudy fuscous dots from costa at  $\frac{4}{5}$  to tornus, hardly sinuate near costa; a marginal series of blackish dots round apex and termen: cilia whitish with slight greyish subbasal line, round apex light greyish. Hindwings 3 and 4 short-stalked; pale whitish-yellowish, yellower towards apex, dorsal half faintly tinged grey; cilia whitish-yellow, more whitish towards tips. Forewings and hindwings beneath whitish-yellowish.

1 ex., Taperinha, July. A distinct species, perhaps allied to *relatu* Meyr.

**Stenoma biannulata** n. sp. Pl. II, f. 15.

♂. 16 mm. Head grey, face and sides of crown white. Palpi white, second joint externally grey on basal  $\frac{2}{3}$ , terminal joint with dark grey basal

and subapical rings. Antennal ciliations 1. Thorax violet-grey. Forewings moderate, costa anteriorly moderately, posteriorly slightly arched, apex rounded, termen rather obliquely rounded; 2 and 3 stalked, 6 to apex (indefinite); light violet-grey, extreme costal edge white; a whitish dot near base in middle; first discal stigma grey, hardly defined, plical dark grey, obliquely beyond it, second discal dark grey, transverse, widest above, with slight whitish suffusion on both sides, an erect grey shade from dorsum just beyond and not reaching this; a curved grey shade from costa before  $\frac{3}{4}$  to tornus, hardly sinuate towards costa; a marginal series of blackish marks round apical part of costa and termen: cilia white. Hindwings grey; cilia white, a greyish subbasal shade on lower part of termen.

1 ex., Taperinha, July. Belongs to group of *sciaphilina*.

**Stenoma sciaphilina** Zell. Hor. Ross. XIII, 291, pl. III, 81 (1877); *aphanes* Wals. Biol. Centr. Amer. IV, 167 (1912); *torophragma* Meyr. Exot. Micr. I, 439 (1915).

3 ex., Taperinha, May, June, August. Mexico, Panama, Costa Rica, Guiana, Upper Amazon.

**Stenoma anonella** Sepp. Surin. Vlind. pl. CXXXVII (1852 ?); *hamon* Busck. Proc. U. S. Mus. XL, 223, pl. IX, 41 (1911).

1 ex., Taperinha, July. Guiana, Brazil, Peru.

**Stenoma ochricollis** Zell. Hor. Ross. XIII, 294, pl. III, 83 (1877); *marginata* Busck Proc. U. S. Mus. XLVII, 49 (1914); *thymiota* Meyr. Exot. Micr. I, 451 (1915).

2 ex., Taperinha, June, July. Panama, Colombia, Guiana, Upper Amazon.

**Stenoma niviliturella** Walk. Cat. XXX, 1020 (1864).

1 ex., Taperinha, August. Upper and Lower Amazon.

**Stenoma scitiorella** Walk. Cat. XXIX, 743 (1864); *laeviuscula* Zell. Hor. Ross. XIII, 290, pl. III, 80 (1877); *felix* Busck Proc. U. S. Mus. XLVII, 40 (1914).

1 ex., Taperinha, Sept. Panama, Guiana, Brazil, Peru.

**Stenoma uncticoma** Meyr. Exot. Micr. I, 528 (1916).

12 ex., Taperinha, June—August. Guiana, Upper and Lower Amazon.

**Stenoma compsocoma** n. sp. Pl. II, f. 16.

♂♀. 14—16 mm. Head whitish-ochreous, central line of crown suffused iridescent blue-purple. Palpi whitish-ochreous, second joint and base of terminal suffused grey externally. Antennal ciliations 2. Thorax violet-grey, edge of shoulder pale ochreous. Forewings elongate, costa gently arched, apex rounded, termen rather obliquely rounded; 6 to apex (indefinite); light violet-grey; costal edge ochreous-whitish or whitish-ochreous: cilia grey-whitish or ochreous-whitish. Hindwings grey; cilia pale greyish, a darker subbasal shade.

4 ex., Taperinha, July. Closely allied to *sematopa* Meyr. and *icteropis* Meyr., but distinct from both.

**Stenoma iocoma** Meyr. Exot. Micr. I, 450 (1915).

3 ex., Taperinha, July, August. Guiana, Lower Amazon.

**Stenoma unguentata** n. sp. Pl. I, f. 20.

♂. 22—23 mm. Head, thorax pale violet-grey. Palpi ochreous-whitish, second joint with violet-grey lateral streak on basal  $\frac{3}{5}$  and suffused violet-grey anteriorly towards apex, terminal joint suffused violet-grey anteriorly except tip. Antennal ciliations  $1\frac{1}{2}$ . Forewings rather elongate, costa gently arched, apex rounded, termen rounded, rather oblique; 7 to apex (indefinite); whitish-violet; costal edge pale ochreous-yellowish from base to  $\frac{2}{3}$ , edged with greyish-violet suffusion beneath; a fine greyish-violet straight shade from  $\frac{2}{5}$  of costa to middle of dorsum, plical stigma forming a faint spot on it; second discal stigma cloudy, violet-grey: cilia whitish-grey-violet. Hindwings 3 and 4 short-stalked; grey-whitish strewn violet-grey hairscales except towards base; cilia white.

2 ex., Taperinha, July. Allied to *caesarea*.

**Stenoma caesarea** Meyr. Exot. Micr. I, 450 (1915).

2 ex., Taperinha, June, and Breves, Delta, September. Guiana, Upper and Lower Amazon.

**Stenoma porphyrastis** Meyr. Exot. Micr. I, 449 (1915).

1 ex., Taperinha, July. Guiana, Upper Amazon.

**Stenoma hyalocryptis** n. sp. Pl. II, f. 17.

♂. 13 mm. Head ochreous-grey-whitish. Palpi whitish, second joint grey externally except tip, terminal joint with base grey and a blackish sub-apical ring. Antennal ciliations  $1\frac{1}{2}$ . Thorax light violet-grey. Forewings elongate, costa gently arched, apex rounded-obtuse, termen rather obliquely rounded; 2 and 3 stalked, 6 to apex (indefinite); light violet-grey; extreme costal edge ochreous-whitish; discal stigmata moderate, black, plical forming a large irregular black spot obliquely beyond first discal, partly whitish-edged; a blackish elongate mark on middle of costa; a somewhat inwards-oblique streak of dark grey suffusion from tornus, pointing to second discal stigma but not reaching it; three blackish dots in an oblique series towards costa about  $\frac{3}{4}$ , and a curved series of minute blackish dots on veins 3—7 near termen (cilia injured). Hindwings 3 and 4 stalked; iridescent violet-hyaline, thinly strewn light greyish hairscales except in cell; cilia whitish-grey, a grey subbasal shade.

1 ex., Taperinha, June. Not in good condition, but a distinct species, probably allied to *ancillaris*.

**Stenoma ancillaris** Meyr. Exot. Micr. I, 530 (1916).

2 ex., Taperinha, June, July. Guiana.

**Stenoma xanthobyrsa** Meyr. Exot. Micr. I, 447 (1915).

2 ex. (♀), Taperinha, June. In this species (described from a single ♂), the ♀ (18—20 mm) has forewings brown instead of yellow-ochreous; vein 6 of forewings runs to apex (indefinite). I have examples from French and British Guiana, and Pará, Brazil.

**Stenoma strenuella** Walk. Cat. XXIX, 736 (1864).

3 ex., Taperinha, June, July, September. Guiana, Bolivia, Upper Amazon.

**Stenoma horocharis** n. sp. Pl. I, f. 21.

♂. 17—19 mm. Head ochreous-whitish, face whiter. Palpi whitish, second joint with dark grey lateral streak on basal  $\frac{2}{3}$ , base and tip of terminal joint grey. Antennal ciliations  $1\frac{1}{2}$ . Thorax pinkish-grey-whitish. Forewings suboblong, costa gently arched, apex rounded, termen rounded, little oblique; 2 from angle, 7 to apex (indefinite); pinky-whitish, costal and terminal edge pale rosy; a blackish dot in middle of base, three (subcostal, median, subdorsal) in a curved series near base, one beneath costa at  $\frac{1}{4}$  and one obliquely beyond this, and three representing stigmata (plical obliquely beyond first discal); two strongly and irregularly curved series of ill-defined blackish-grey dots or scattered scales, first from before middle of costa passing beyond cell to dorsum beyond middle, second from  $\frac{3}{5}$  or  $\frac{2}{3}$  of costa to dorsum before tornus; a marginal series of black dots round apical part of costa and termen: cilia whitish, basal half tinged pinkish. Hindwings pale whitish-yellowish; cilia as in forewings, a light greyish median shade round apex.

2 ex., Taperinha, June, July. Allied to *languescens* Meyr. and *holcadica* Meyr., but very distinct.

**Stenoma languescens** Meyr. Exot. Micr. I, 458 (1915).

1 ex., Breves, Delta, September. Guiana, Upper Amazon.

**Stenoma codicata** Meyr. Exot. Micr. I, 530 (1916).

6 ex., Taperinha, June—August. Guiana, Lower Amazon.

**Stenoma methystica** n. sp. Pl. II, f. 18.

♂. 13 mm. Head whitish-grey-ochreous, crown suffused grey. Palpi ochreous-whitish, second joint suffused grey externally, base of terminal joint grey. Antennal ciliations 1. Thorax whitish-ochreous suffused grey. Forewings suboblong, costa anteriorly moderately arched, apex rounded, termen rather obliquely rounded; 2 and 3 short-stalked, 6 to apex (indefinite); pale greyish-ochreous; costal edge suffused fuscous on basal third, reddish-brown on median third, thence suffused dark grey round apex; costal third irregularly suffused light red-brownish to end of cell; second discal stigma small, grey, some irregular greyish clouding between this and dorsum; a curved series of blackish-grey dots from beneath costa at  $\frac{2}{3}$  to tornus: cilia ochreous-whitish. Hindwings 3 and 4 coincident; grey; cilia grey-whitish, a grey subbasal shade.

1 ex., Taperinha, August. Perhaps nearest *centrodina* Meyr.

***Stenoma epipacta* Meyr.** Exot. Micr. I, 444 (1915).

4 ex., Taperinha, June—August. Guiana, Upper Amazon.

***Stenoma scoliandra* Meyr.** Exot. Micr. I, 441 (1915).

2 ex., Taperinha, August. Guiana, Upper and Lower Amazon.

***Stenoma irascens* n. sp.** Pl. I, f. 22.

♂. 17 mm. Head pale fleshcolour, face tinged whitish. Palpi whitish-grey-ochreous. Antennal ciliations 1. Thorax light greyish-fleshcolour. Forewings moderate, widest before middle, narrowed posteriorly, costa moderately arched on anterior half, then faintly sinuate, apex rounded, termen rather obliquely rounded; 3 and 4 out of 2, 6 to apex (indefinite), 10 and 11 apparently absorbed in a subcostal groove beneath; light violet-purplish-brown; four or five grey dots or transverse marks towards costa on second fourth; plical and second discal stigmata minute, dark grey, a slender deep ferruginous streak along costa on posterior half; a strongly curved series of minute dark grey dots from towards costa in middle to near termen and thence to tornus: cilia whitish-grey. Hindwings 3 and 4 short-stalked; blackish-grey; cilia whitish-grey, a grey subbasal shade.

1 ex., Taperinha, August. Allied to *ascodes* Meyr.

***Stenoma ebria* Meyr.** Exot. Micr. I, 441 (1915).

1 ex., Taperinha, July. Venezuela.

***Stenoma modulata* Meyr.** Exot. Micr. I, 436 (1915).

2 ex., Taperinha, July, August. Guiana.

***Stenoma dryocosma* Meyr.** Exot. Micr. II, 206 (1918).

11 ex., Taperinha, June—September. Guiana.

***Stenoma chromotechna* Meyr.** Exot. Micr. III, 212 (1925).

1 ex., Taperinha, July. Upper Amazon.

***Stenoma malacoxesta* n. sp.** Pl. I, f. 23.

♀. 17 mm. Head whitish. Palpi white, second joint grey except apex. Thorax light ashy-grey. Forewings suboblong, slightly narrowed anteriorly, costa anteriorly gently arched, then straight, apex obtuse, termen slightly rounded, vertical; 7 to termen; pale ashy-fuscous, with whitish gloss; costal edge whitish-ochreous; plical and second discal stigmata very small, blackish; veins towards termen indistinctly streaked with greyish suffusion; a curved grey subterminal line from  $\frac{4}{5}$  of costa to tornus, thickened and darkened on costa; a marginal series of black dots or marks round apex and termen: cilia whitish-grey. Hindwings light grey; cilia whitish-grey, tinged whitish-ochreous round apex and upper part of termen.

1 ex., Taperinha, July. Perhaps allied to *comma* Busck.

**Stenoma picrantis n. sp.** Pl. I, f. 24.

♀. 19 mm. Head whitish, crown centrally mixed grey. Palpi white, second joint irrorated grey, terminal joint with grey basal ring and median band, tip black. Thorax light grey, margins white, tegulae fuscous, apex white. Forewings elongate-oblong, costa moderately arched near base, hardly sinuate in middle, apex rounded-obtuse, termen nearly straight, somewhat oblique; 2 from near angle, 7 to apex (indefinite); white, irregularly and suffusedly irrorated light grey, dorsal half suffused light greyish-ochreous; some dark fuscous scales indicating a short interrupted longitudinal streak from base of costa, and some along fold anteriorly; a slender dark fuscous costal streak with extreme costal edge whitish from  $\frac{1}{6}$  to  $\frac{2}{3}$ , slenderly interrupted at  $\frac{2}{5}$ , immediately beneath this some brownish suffusion forming irregular patches before and beyond middle, first with a spot of blackish irroration, some light yellow-ochreous suffusion beneath this, second with two elongate blackish spots, upper small; plical and second discal stigmata small, blackish; beyond  $\frac{2}{3}$  an elongate wedged-shaped blackish costal spot, from which a slender greyish line, rather acutely angulated in middle and curved-sinuate below this, runs to dorsum towards tornus; three black marks on apical part of costa, some grey suffusion beneath them; a terminal series of black dots: cilia light greyish. Hindwings 3 and 4 stalked; grey; cilia pale greyish, a darker subbasal shade.

1 ex., Taperinha, June. Allied to *fluminata*.

**Stenoma fluminata** Meyr. Trans. Ent. Soc. Lond. 1911, 716.

7 ex., Taperinha, June—August. Guiana, Colombia, Lower Amazon.

**Stenoma charitarcha** Meyr. Exot. Micr. I, 438 (1915).

2 ex., Taperinha, August. Guiana, Bolivia, Upper and Lower Amazon.

**Stenoma eusticta** Meyr. Exot. Micr. I, 521 (1916).

1 ex., Taperinha, July. Guiana, Upper Amazon.

**Stenoma vinifera** Meyr. Exot. Micr. I, 521 (1916).

1 ex., Taperinha, August. Guiana.

**Stenoma hoplitica** Meyr. Exot. Micr. III, 216 (1925).

2 ex., Taperinha, July. Upper Amazon.

**Stenoma bryocosma** Meyr. Exot. Micr. I, 535 (1916).

2 ex., Taperinha, July, August. These have the groundcolour of forewings grey-whitish, an oblique rather dark green blotch from dorsum towards base reaching half across wing, costal posterior marks dark green, hindwings whitish faintly tinged green; they are in better condition than the unique type, from French Guiana.

**Stenoma aplytopis n. sp.** Pl. II, f. 19.

♀. 13 mm. Head, thorax whitish. Palpi white, second joint greyish except towards apex, terminal joint with two indistinct greyish bands.

Forewings elongate, costa gently arched towards extremities, apex rounded-obtuse, termen rather obliquely rounded; 2 and 3 stalked, 7 to apex (indefinite); whitish, irregularly sprinkled grey; plical and second discal stigmata blackish; a marginal series of blackish dots or marks round posterior third of costa and termen: cilia white, a dark grey subbasal shade. Hindwings 3 and 4 coincident; grey-whitish; cilia white, round apex a grey subbasal line.

1 ex., Taperinha, July. Perhaps related to *dryaula* Meyr.

**Stenoma cynnographa n. sp.** Pl. I, f. 32.

♂♀. 20—23 mm. Head, thorax white. Palpi white, second joint light brownish except towards apex, base and tip of terminal joint fuscous. Antennal ciliations ♂ 1. Forewings suboblong, costa anteriorly moderately arched, then nearly straight, apex obtuse-pointed, termen rather strongly sinuate beneath apex, then rounded-prominent; 7 to termen; ochreous-white; plical and first discal stigmata minute, dark fuscous, plical very obliquely posterior, second discal forming a dark fuscous transverse mark followed by a spot of fuscous suffusion; some slight fuscous irroration above middle of dorsum: a spot of dark fuscous suffusion above dorsum near tornus; a rather curved line formed of fuscous lunulate marks from costa at  $\frac{4}{5}$  to tornus, indented towards costa; a terminal series of small black dots: cilia white. Hindwings and cilia white.

5 ex., Taperinha, June—August. Allied to *consociella*.

**Stenoma consociella** Walk. Cat. XXIX, 730 (1864); *surinamella* Möschl. Verh. zool. bot. Ges. Wien XXXII, 360, pl. XVIII, 46 (1882); *petrina* Wals. Biol. Centr. Amer. IV, 168, pl. VI, 9 (1912).

1 ex., Taperinha, July. Guatemala, Panama, Guiana, Upper and Lower Amazon.

**Stenoma alligans** Butl. Cist. Ent. II, 191 (1877); *obelodes* Meyr. Exot. Micr. I, 456 (1915).

5 ex., Taperinha and Breves, Delta, September. Guiana, Upper and Lower Amazon.

**Stenoma infecta n. sp.** Pl. II, f. 20.

♂. 13 mm, ♀ 16 mm. Head light greyish-ochreous, face ochreous-whitish. Palpi ochreous-whitish, second joint grey except tip. Antennal ciliations ♂  $1\frac{1}{2}$ . Thorax brownish-ochreous or greyish-ochreous. Forewings suboblong, costa anteriorly moderately arched, then nearly straight, apex rounded, termen rather obliquely rounded; 5 to apparent apex (indefinite); ochreous-brownish; plical and second discal stigmata minute, dark fuscous; small fine oblique marks of fuscous irroration from costa about  $\frac{1}{3}$  and middle; very fine linear interneural blackish marginal marks round posterior part of costa and apex, and two or three minute dots on termen: cilia light ochreous. Hindwings 3 and 4 stalked; dark grey; cilia light grey, a darker subbasal shade.



2 ex., Taperinha, June, July. Perhaps allied to *meridiana*.

**Stenoma meridiana** Meyr. Exot. Micr. I, 435 (1915).

1 ex., Taperinha, July. Guiana.

**Stenoma acratodes** Meyr. Exot. Micr. I, 536 (1916).

2 ex., Taperinha, July. Guiana.

**Stenoma satyropa** Meyr. Exot. Micr. I, 478 (1915).

1 ex., Taperinha, June. Guiana.

**Stenoma aromatica** Meyr. Exot. Micr. I, 449 (1915).

6 ex., Taperinha, June, August, September. Colombia, Brazil.

**Stenoma bythitis** Meyr. Exot. Micr. I, 443 (1915); *argospora* ibid. 443 (1915).

3 ex., Taperinha, June, July. Guiana, Upper and Lower Amazon. I am now satisfied that *argospora* Meyr. was founded on specimens of *bythitis* in inferior condition.

**Stenoma harpoceros** n. sp. Pl. I, f. 25.

♂. 27 mm. Head pale greyish-ochreous. Palpi light greyish-ochreous, second joint suffused grey on apical  $\frac{2}{5}$ , terminal joint whitish posteriorly. Antennae ciliated (1), stalk with a chitinous swelling near base, bearing an oblique notch on inner side. Thorax greyish-ochreous. Forewings moderate, slightly dilated, costa strongly arched, apex rounded, termen rounded, rather oblique; 6 to apparent apex (indefinite); greyish-ochreous or pale fuscous; costal edge pale from  $\frac{1}{6}$  to  $\frac{2}{3}$ , beneath this a grey shade, expanded into a suffused grey subtriangular blotch before middle of costa; second discal stigma small, dark grey, plical minute: cilia light greyish. Hindwings light grey; cilia whitish-ochreous.

1 ex., Taperinha, June. Belongs to group of *algosa*, but peculiarly characterised by the antennal structure.

**Stenoma algosa** Meyr. Exot. Micr. I, 537 (1916).

2 ex., Gurupà-Almeirim, May, and Taperinha, August. Colombia, Guiana, Brazil.

**Stenoma aerinotata** Butl. Cist. Ent. II, 190 (1877); *sperata* Busck Proc. U. S. Mus. XL, 219, pl. IX, 31 (1911).

1 ex., Taperinha, July. Bolivia, Guiana, Upper and Lower Amazon.

**Stenoma sesquiertia** Zell. Linn. Ent. IX, 379, pl. III, 20 (1854); *graphiphorella* Walk. Cat. XXIX, 770 (1864); *lapidea* Meyr. Exot. Micr. I, 541 (1916).

3 ex., Taperinha, June, July. Two of these specimens are of the form *lapidea* Meyr., in which the black subdorsal spot beneath plical stigma is entirely absent; but I am now satisfied that *lapidea* is not specifically distinct from *sesquiertia*. Peru, Guiana.

**Stenoma exarata** Zell. Linn. Ent. IX, 378, pl. III, 19 (1854).

1 ex., Taperinha, July. Mexico, Guatemala, Costa Rica, Venezuela, Colombia, Guiana, Brazil.

**Stenoma metroleuca n. sp.** Pl. II, f. 21.

♂. 14 mm. Head, thorax white. Palpi white, second joint light ashy-grey. Antennal ciliations 2. Abdomen whitish-ochreous, sides and ventral surface white. Forewings elongate, costa slightly arched, apex rounded, termen rounded, rather oblique; 2 and 3 stalked from angle, 4 connate, 7 to apex (indefinite); snow-white: cilia white. Hindwings 3 and 4 stalked; whitish, tinged grey posteriorly; cilia white. Wings beneath white, forewings with faint yellowish tinge.

1 ex., Taperinha, June. Allied to *xanthosoma* Dogn.; it is the smallest of all the unicolorous white species of the genus.

**Stenoma completella** Walk. Cat. XXIX, 718 (1864).

1 ex., Taperinha, June. Panama, Colombia, Brazil.

**Stenoma sphragidopis** Meyr. Exot. Micr. I, 431 (1915).

1 ex., Taperinha, July. Guiana, Upper Amazon.

**Stenoma nebrita** Wals. Biol. Centr. Amer. IV, 176, pl. VI, 11 (1913); *lithoxesta* Meyr. Exot. Micr. I, 432 (1915).

1 ex., Taperinha, July. Panama, Colombia, Guiana, Brazil.

**Baeonoma mastodes** Meyr. Exot. Micr. I, 508 (1916).

2 ex., Taperinha, July. September. Guiana, Lower Amazon.

**Baeonoma helotypa** Meyr. Exot. Micr. I, 508 (1916).

1 ex., Taperinha, July. Guiana.

**Chlamydastis lactis** Busck Proc. U. S. Mus. XL, 216, pl. VIII, 6 (1911).

1 ex., Taperinha, July. Guiana, Upper Amazon.

**Ptilogenes impressella** Walk. Cat. XXIX, 720 (1864); *prasoleuca* Meyr. Exot. Micr. I, 483 (1916).

1 ex., Taperinha, August. Guiana, Peru, Upper and Lower Amazon.

**Ptilogenes strabonia n. sp.** Pl. I, f. 26.

♂. 19 mm. Head white somewhat mixed ochreous. Palpi white tinged yellowish and slightly sprinkled dark fuscous, terminal joint half second. Antennal ciliations  $1\frac{1}{2}$ . Thorax white suffusedly mixed pale ochreous, a few black scales posteriorly, with strong posterior crest. Forewings rather elongate, slightly dilated, costa gently arched, apex obtuse, termen rather obliquely rounded; 2—4 almost connate from angle, 7 to apex; light greyish-ochreous, slightly sprinkled white towards costa; dots of one or two black scales at base of costa, and near base in middle; spots of fuscous suffusion mixed blackish on costa towards base, and in disc at  $\frac{1}{4}$ ; spots of ferruginous-brown suffusion on costa at  $\frac{1}{3}$ , middle, and  $\frac{4}{5}$ ; a dark brown spot in disc at  $\frac{2}{5}$ , and an irregular-elongate ferruginous tuft beneath it on fold; a narrow oblique transverse-oval white ring on end of cell, lower end filled ferruginous, a few black scales scattered beneath this; a triangular nearly apical fuscous patch mixed blackish and pale leaden-blue, preceded by

ochreous-yellowish suffusion, before which is a narrow transverse streak of fuscous and black scales in disc; termen and apical part of costa narrowly fuscous: cilia light greyish-ochreous with white basal dots, round upper half of termen a blackish subbasal line. Hindwings dark grey; cilia whitish-grey, a dark grey subbasal line.

1 ex., Taperinha, June. A peculiar form, perhaps with some relationship to *ophiopa* Meyr., but narrower-winged; *ichthyodes* Meyr. is probably also allied.

**Ptilogenes batrachopis** Meyr. Trans. Ent. Soc. Lond. 1913, 182.

1 ex., Taperinha, August. The white groundcolour of forewings is less obscured and stands out more distinctly, and the dark markings are more pronounced than in the unique Peruvian type-specimen, but otherwise there is no difference.

**Ptilogenes smodicopa** Meyr. Exot. Micr. I, 409 (1915).

2 ex., Taperinha, July. Peru, Upper Amazon.

**Ptilogenes stagnicolor** Meyr. Exot. Micr. III, 229 (1926).

2 ex., Taperinha, July. Upper Amazon.

**Ptilogenes lichenias** Meyr. Exot. Micr. I, 486 (1916).

1 ex., Taperinha, August. Colombia, Guiana.

**Ptilogenes scutellata** Meyr. Exot. Micr. I, 487 (1916); *hemichlora* ibid. 487 (1916).

7 ex., Taperinha, June—August. Costa Rica, Guiana, Brazil, Peru. Very variable.

**Ptilogenes chlorosticta** Meyr. Trans. Ent. Soc. Lond. 1913, 184.

2 ex., Taperinha, June, July. Peru, Guiana.

**Ptilogenes elaeostola** n. sp. Pl. I, f. 27.

♀. 18—19 mm. Head light olive-greenish, face tinged whitish. Palpi whitish, second and terminal joints each with two indistinct olive-greenish bands somewhat sprinkled blackish. Thorax light olive-greenish, anterior margin and posterior crests more or less tinged white. Forewings suboblong, apex rounded, termen rather obliquely rounded; light olive-greenish, a few minute fuscous or dark fuscous specks; greyish-tinged transverse marks on costa at  $\frac{1}{3}$ , middle, and  $\frac{2}{3}$ , first terminated by a blackish dot, third giving rise to a fine greyish unevenly curved line minutely dotted black running to tornus; stigmata small, indistinct, blackish, plical almost obscured by a whitish dot, slightly beyond first discal; an irregular dark grey blotch on dorsum about  $\frac{2}{3}$ : cilia light olive-greenish, obscurely barred grey. Hindwings dark grey; cilia grey, a dark grey subbasal shade.

2 ex., Taperinha, July. Perhaps next *disticha* Meyr.

**Ptilogenes bifida** Meyr. Exot. Micr. I, 541 (1916).

1 ex., Taperinha, July. Guiana.

**Ptilogenes chloroloba** Meyr. Exot. Micr. I, 439 (1915), ibid II, 212 (1918).

13 ex., Taperinha, June—August. Peru, Guiana, Upper and Lower Amazon.

**Ptilogenes trizeucta** n. sp. Pl. I, f. 28.

♂. 16—17 mm. Head ochreous-whitish or whitish-ochreous. Palpi whitish, second joint grey except towards apex. Antennal ciliations 1. Thorax whitish-ochreous or whitish, slightly sprinkled greyish. Forewings suboblong, slightly narrowed posteriorly, costa anteriorly moderately, posteriorly slightly arched, apex obtuse, termen nearly straight, vertical; ochreous-whitish or whitish-ochreous, irregularly sprinkled greyish or fuscous; three slender fuscous transverse lines forming small suffused spots on costa, first at  $\frac{1}{3}$ , straight, direct, scales rather raised, second from middle of costa to  $\frac{3}{4}$  of dorsum, somewhat sinuate, second discal stigma forming a darker mark on this, third from  $\frac{3}{4}$  of costa to dorsum before tornus, excurved in disc, indented towards costa; a marginal series of blackish dots round apical part of costa and termen: cilia ochreous-whitish. Hindwings whitish-grey, some whitish-ochreous suffusion above lower margin of cell except near base: cilia whitish. Forewings beneath with pale ochreous subdorsal hairpencil from base to middle, tinged grey towards apex, concealed beneath costal area of hindwings. Hindwings beneath with oval glandular scaled spot in cell near base.

1 ex., Taperinha, July. Also 1 ex. in my Coll. from Obidos, September (*Parish*). Allied to *chloroloba*.

**Ptilogenes melanonca** Meyr. Exot. Micr. I, 408 (1915).

17 ex., Taperinha, June—September. Bolivia, Guiana.

**Ptilogenes plocogramma** Meyr. Exot. Micr. I, 407 (1915).

2 ex., Taperinha, July. Colombia, Guiana, Upper Amazon.

**Ptilogenes deflua** Meyr. Exot. Micr. II, 210 (1918).

3 ex., Taperinha, June—August. Guiana.

**Ptilogenes ponderata** Meyr. Exot. Micr. I, 488 (1916).

2 ex., Taperinha, August. Guiana, Upper Amazon.

**Ptilogenes aphrogenes** Meyr. Exot. Micr. I, 407 (1915); *trastices* Busck Proc. U. S. Mus. XL, 215, pl. IX, 34 (van.) (1911).

8 ex., Taperinha, June, July. Guiana, Upper and Lower Amazon.

**Ptilogenes deflexa** Meyr. Exot. Micr. I, 489 (1916).

2 ex., Taperinha, August. Guiana, Upper and Lower Amazon.

**Ptilogenes inspectrix** Meyr. Exot. Micr. I, 542 (1916).

1 ex., Taperinha, August. Guiana.

**Ptilogenes hesmarcha** n. sp. Pl. II, f. 22.

♂. 14 mm. Head, thorax white. Palpi white, basal half of second joint

grey. Antennal ciliations 2. Forewings suboblong, slightly narrowed anteriorly, apex rounded-obtuse, termen rather obliquely rounded; 6 absent, 7 to termen; white; a ferruginous-ochreous spot towards costa before middle; some fuscous irroration towards posterior half of dorsum; some blackish irroration in disc beyond middle, preceding a round pale ochreous blotch surrounded by fine blackish irroration except beneath; a marginal fascia of blackish irroration round apical part of costa and termen, tending to form small darker marginal spots round apex, above apex suffused ferruginous-ochreous: cilia ochreous-whitish. Hindwings light grey; cilia grey-whitish.

1 ex., Taperinha, July. Although exceptional in the absence of vein 6 of forewings, this species agrees otherwise with *Ptilogenes* and need not be generically separated; it is even possible that the neural difference is an individual abnormality; the species may be placed near *inspectrix*.

### Copromorphidae.

#### *Saridacma* n. g.

Head with appressed scales; ocelli posterior; tongue short. Antennae under  $\frac{1}{2}$ , ♂ stout, compressed, lamellate, scape moderate, without pecten. Labial palpi rather long, recurved, second joint thickened with appressed scales, terminal joint half second, equally thick and with dense scales forming an obtuse apical brush. Maxillary palpi obsolete. Posterior tibiae loosely haired above. Forewings 2 from towards angle, 3—5 approximated at base, 7 to termen, 8 to costa, 11 from middle. Hindwings over 1, triangular-ovate, cilia  $\frac{1}{6}$ ; with cubital pecten; 2 from  $\frac{1}{2}$ , 3 and 4 short-stalked, 5 approximated, 6 and 7 parallel, 7 to apex.

Allied to *Ordrupia*, of which it is a development, differing by the curious palpi and costal termination of vein 8.

#### *Saridacma ilyopis* n. sp. Pl. I, f. 37.

♂. 20 mm. Head, thorax white. Palpi whitish, suffused pale fuscous except anteriorly and at apex. Forewings moderate, slightly dilated, costa slightly arched, apex obtuse, termen faintly sinuate, oblique: grey with silvery-blue iridescence, suffused whitish towards base and costa; a patch of darker grey suffusion extending on dorsum from middle to near tornus and reaching  $\frac{3}{4}$  across wing, some darker grey suffusion also along termen: cilia grey (imperfect). Hindwings pale grey; cilia grey-whitish.

1 ex., Taperinha, June.

#### *Neophylarcha helicosema* Meyr. Exot. Micr. III, 240 (1926).

2 ex., Taperinha, June, July. Guiana.

### Aegeriadae.

*Aegeria myrmosipennis* Walk. Cat. VIII, 46 (1856) (*myrmosaepennis*); *tryphoniformis* ibid. 48; *plectisciformis* ibid. 49; *cerceriformis* ibid. 49.

2 ex., Taperinha, July, and Breves, Delta, September. Mexico, Guatemala, Panama, Brazil.

**Aegeria anomaliformis** Walk. Cat. VIII, 47 (1856).

1 ex., Taperinha, June. Upper and Lower Amazon.

**Aegeria corporalis** n. sp. Pl. II, f. 27.

♂. 17 mm. Head deep indigo-blue, orbits white, collar pale yellowish. Palpi whitish, terminal joint and apical half of second grey externally. Thorax dark indigo-blue, inner edge of tegulae yellowish. Abdomen deep blue-purple, 3 and 5 with slender yellowish apical rings, anal tuft deep purple mixed whitish towards apex. Forewings iridescent amber-hyaline; veins, dorsal edge, a slender costal streak, a bar on transverse vein, and a moderate terminal fascia occupying at apex less than half distance to transverse vein and narrowed to tornus dark purple-fuscous, dorsal edge somewhat mixed ochreous-yellow: cilia dark grey. Hindwings iridescent amber-hyaline; veins and terminal edge black, costal edge yellow; cilia dark grey.

1 ex., Taperinha, July. Nearest to the larger *aequalis* Walk.

**Bombosceles** n. g.

Head smooth; ocelli large, posterior; tongue developed. Antennae  $\frac{1}{2}$ , tapering, ♂ strongly ciliated, scape short, without pecten. Labial palpi rather short, curved, ascending, with appressed scales, terminal joint as long as second, transversely compressed, pointed. Maxillary palpi absent. Abdomen stout, broadest in middle, anal tuft moderate. All tibiae broadly expanded with dense rough hairscales, middle and posterior tarsi roughly tufted on three basal joints. Forewings 2 from angle, 3 absent, 7 to apex (indefinite), 8 separate, 11 from  $\frac{3}{4}$ . Hindwings  $1\frac{1}{2}$ , subovate, cilia  $\frac{1}{5}$ ; 2 and 3 connate from  $\frac{3}{4}$  of cell, 4 from angle, 5 absent, 6 curved up at base and connate with 7.

Near *Tinthia*.

**Bombosceles cyanomyia** n. sp. Pl. II, f. 26.

♂. 14 mm. Head, palpi, antennae, thorax, abdomen dark indigo-blue, orbits behind eye whitish, antennal ciliations  $2\frac{1}{2}$ . Legs dark blue-grey, a light ochreous patch at apex of posterior tibiae, all tarsi with 2 or 3 apical joints whitish-ochreous. Forewings narrow, dilated posteriorly, apex rounded, termen obliquely rounded; brownish-hyaline; veins, a broad costal streak to vein 8, a slender dorsal streak, and a triangular blotch on end of cell blue-blackish: cilia dark fuscous. Hindwings ochreous-hyaline; veins finely blackish; cilia grey, a blackish-fuscous basal shade.

1 ex., Taperinha, July.

#### Heliodinidae.

**Percnarcha strategica** n. sp. Pl. I, f. 38.

♀. 20—22 mm. Head, palpi rather dark bluish-fuscous. Antennae dark fuscous. Thorax crimson, a posterior spot and apex of tegulae bluish-fuscous.

Abdomen crimson, apical third rather dark bluish-fuscous. Legs dark fuscous. Forewings narrow, slightly dilated, costa slightly sinuate, arched towards obtuse apex, termen obliquely rounded; rather dark violet-fuscous: cilia concolorous. Hindwings iridescent-hyaline; veins and terminal edge dark fuscous; costal half light pinkish; space between veins 5 and 6 grey, a dark grey terminal fascia from this attenuated to vein 2; cilia grey, round apex pale pinkish somewhat mixed grey.

2 ex., Pará, Belem, September.

#### Glyphipterygidae.

**Mictopsichia fuesliniana** Cram. Pap. Exot. IV, 163, pl. 372 E (1782); *superba* Feld. Reis. Nov. pl. CXXXVIII, 23 (1875).

1 ex., Pará, Belem, May. Guatemala, Honduras, Panama, Venezuela, Guiana, Brazil, Peru.

**Mictopsichia Durranti** Wals. Biol. Centr. Amer. IV, 304, pl. IX, 13 (1914).

1 ex., Pará, Belem, May. Panama, Guiana, Upper and Lower Amazon.

**Mictopsichia hubneriana** Cram. Pap. Exot. V, 41, pl. VIII, 5 (1787).

5 ex., Taperinha, July, August, and Pará, Belem, September. Panama, Grenada, Colombia, Guiana, Brazil, Peru.

**Mictopsichia gemmisparsana** Walk. Cat. XXVIII, 415 (1863).

6 ex., Taperinha, Santarem, and Pará, Belem, May, June, August. Mexico, Guatemala, Panama, Colombia, Guiana, Brazil, Peru, Bolivia.

**Sagalassa valida** Walk. Cat. VIII, 6 (1856); *compulsana* ibid. XXVIII, 457 (1863); *crassalis* ibid. XXXIV, 1289 (1865); *querula* Feld. Reis. Nov. pl. CXXXVIII, 44 (1875); *olivacea* Busck Proc. U. S. Mus. XLVII, 57 (1914).

6 ex., Taperinha, June, July, September. Panama, Guiana, Brazil, Peru.

**Tortyra bigerana** Walk. Cat. XXVIII, 419 (1863); *velatana* ibid. 420; *contrariana* ibid. 420; *lacunaris* Feld. Reis. Nov. pl. CXXXVIII, 21 (1875).

1 ex., Pará, Belem, September. Guatemala, Guiana, Brazil, Peru.

**Simaethis canofusana** Walk. Cat. XXVIII, 419 (1863).

1 ex., Taperinha, June. Upper Amazon.

**Simaethis albertiana** Cram. Pap. Exot. IV, 163, pl. 372 F (1781); *zebra* Walk. Cat. XII, 774 (1857).

1 ex., Taperinha, June. Panama, Trinidad, Venezuela, Guiana, Brazil, Peru.

**Simaethis houttuinalis** Cram. Pap. Exot. IV, 192, pl. 384 L (1781); *pulsana* Walk. Cat. XXVIII, 417 (1863).

2 ex., Taperinha and Santarem, June, September. Guatemala, Panama, Venezuela, Guiana, Brazil, Peru.

**Simaethis triacmias** Meyr. Exot. Micr. III, 304 (1926).

1 ex., Taperinha, June. Differs from the unique type-specimen (from

Rio Negro, Colombia) in having the hindwings wholly dark fuscous except a short orange streak from middle of base, and one along median area of termen, but similar variation occurs in the allied *houltuinialis*, and is doubtless not specific; the markings of forewings are identical.

**Brenthia stimulans** Meyr. Exot. Micr. II, 336 (1920).

1 ex., Taperinha, June. Guiana, Brazil, Peru.

**Ussara decoratella** Walk. Cat. XXIX, 801 (1864).

2 ex., Pará, Belem, May. Upper Amazon.

#### Hyponomeutidae.

**Atteva numeratrix** n. sp. Pl. I, f. 30.

♂. 25 mm. Head, thorax, abdomen white, a blackish spot in middle of face, a small blackish mark on shoulder. Palpi grey, base and apex of second joint white. Posterior tibiae with a fringe of very long fine white hairs on inner side, without spurs. Forewings very elongate, somewhat dilated, costa arched posteriorly, apex obtuse, termen obliquely rounded; white, markings dark grey-purple; costal half crossed by about 12 variable irregular transverse strigae, with several shorter ones, dorsal area with a round dot almost at base and five transverse marks from dorsum to fold or nearly, viz., one at  $\frac{1}{4}$ , two towards middle, and two towards tornus: cilia white, spotted grey on markings of costal half. Hindwings and cilia white.

1 ex., Taperinha, July. A novel and very interesting form.

**Atteva punctella** Cram. Pap. Exot. IV, 164, pl. 372 L (1781); *pustulella* Fabr. Ent. Syst. III (2), 292 (1794).

2 ex., Taperinha, June, July. Panama, Trinidad, Guadeloupe, Guiana, Colombia, Bolivia, Brazil, Argentina.

**Urodus opticosema** n. sp. Pl. II, f. 24.

♂. 18 mm. Head, palpi, thorax grey. Posterior tibiae and basal joint of tarsi much thickened above with dense appressed grey scales. Genitalia: uncus short, straight, obtuse-pointed; gnathos large, very broad, oval; valva long, slender, attenuated and upcurved round gnathos, apex pointed, slightly falcate. Forewings moderate, costa moderately arched, apex rounded, termen rather obliquely rounded; grey, faintly violet-tinged: cilia light grey. Hindwings rather dark grey; cilia grey; costa fringed with loosely reflexed hairs on basal third beneath; an oval spot within cell just before middle of wing thinly scaled beneath and appearing lighter; a subdorsal groove containing a pencil of long light greyish hairs. Forewings beneath with rough scales on basal third of vein 12.

2 ex., Taperinha, June, August.

**Urodus cyclopica** n. sp. Pl. II, f. 25.

♂. 15 mm. Head, palpi, thorax light grey. Posterior tibiae normal. Genitalia: uncus moderate, straight, obtuse; gnathos short, triangular, pointed;



valva long, moderately stout, gradually narrowed, apex upcurved, pointed. Forewings moderate, costa moderately arched, apex rounded, termen obliquely rounded; light violet-grey, with slight bluish gloss: cilia light grey; beneath with rough scales on basal  $\frac{2}{3}$  of vein 12. Hindwings and cilia grey; beneath with reflexed fringe of rough hairscales on basal fourth; an oval hyaline spot within cell just before middle of wing preceded on lower surface by rough hairs; a subdorsal groove clothed with modified scales.

1 ex., Taperinha, June. Allied to *opticosema*.

**Urodus perischias** Meyr. Exot. Micr. III, 129 (1925).

5 ex., Taperinha, June—August. Guiana, Upper Amazon.

**Urodus aphanoptis** n. sp. Pl. I, f. 39.

♂. 30 mm. Head light grey with blue gloss. Palpi, thorax light violet-grey. Posterior tibiae with long expansible whitish-grey hairpencil from base above. Abdomen blue-grey with rough light grey hairs dorsally near base. Genitalia: uncus short, straight; gnathos rather broad, oval; valva narrow throughout, apex upcurved, obtuse. Forewings moderate, costa moderately arched, apex rounded, termen rounded, somewhat oblique; light glossy violet-grey; faint undefined blotches of lighter suffusion indicated before middle above and below fold: cilia concolorous; beneath with 12 rough-scaled almost to apex. Hindwings grey, basal half grey-whitish; cilia light grey; beneath with subcostal groove above cell.

1 ex., Taperinha, June.

**Ethmia cypraspis** n. sp. Pl. I, f. 31.

♂♀. 19—22 mm. Head white, lower part of face suffused bronzy-fuscous. Palpi dark bronzy-grey, terminal joint white except towards base. Thorax white, dark indigo-grey with sometimes bisected median and posterior blotches (leaving apex white), and small spots on shoulders. Abdomen grey, segmental margins whitish, segment 2 tinged ochreous, apex ochreous-yellow. Forewings elongate, costa gently arched, apex rounded-obtuse, termen rounded, little oblique; dull white; small dark indigo-grey spots on base of costa, at base of fold, and three in a slightly oblique series in disc near base; an almost costal streak of grey suffusion from near base to  $\frac{2}{3}$ , beneath this two transverse oval grey blotches anteriorly, and two median grey blotches suffused together above and confluent with it; a grey blotch on lower angle of cell, and a narrow irregular transverse one beyond cell; a deep coppery semicircular blotch occupying median third of dorsum and reaching nearly half across wing, marked with a fine zigzag whitish median line; a coppery terminal fascia preceded by grey transverse blotches above and below middle, and containing a fine irregularly sinuate transverse whitish line: cilia purple-coppery, outer half coppery-grey-whitish. Hindwings grey-whitish, veins finely grey, apical half suffused grey, darker towards apex; cilia whitish, a grey basal line round apical half.

17 ex., Taperinha, July—September. Nearest *chalcodora* Meyr. from Argentina.

**Ethmia catapeltica** Meyr. Exot. Micr. III, 119 (1924).

5 ex., Taperinha, June—September. In all of these, and also in a specimen in my Coll. from R. Maroni, French Guiana, the black median streak forms an obvious blotch at apex of forewings, where in the original type-specimen from Costa Rica there is only a slender bar; there is no other noticeable difference, and the peculiarity probably indicates a slight geographical form.

**Gracilariadae.****Gracilaria eolampis** Meyr. Trans. Ent. Soc. Lond. 1915, 238.

1 ex., Santarem, August. Guiana.

**Tineidae.****Colpocrita** n. g.

Head rough-haired, hairs of face longer and spreading upwards; ocelli posterior; tongue absent. Antennae  $\frac{1}{2}$ , slender, scape moderate, without pecten. Labial palpi moderately long, subascending, second joint loosely scaled, terminal joint about half second, cylindrical, pointed. Maxillary palpi short, filiform, porrected. Posterior tibiae clothed with long rough scales above. Forewings with tufts of scales; 2 from  $\frac{5}{6}$ , 3 from angle, 4 approximated, 7 and 8 stalked, 7 to costa, 9 approximated, 10 from  $\frac{5}{6}$ , 11 from towards base. Hindwings 1, elongate-ovate, termen distinctly sinuate, cilia  $\frac{1}{4}$ ; 2 from  $\frac{2}{3}$ , 3 from angle, transverse vein angled inwards between 3 and 4, receiving lower branch of media, above this rather outwards-oblique, 4—7 parallel.

Not at all near any American genus; structurally most like *Metasticha* from Java.

**Colpocrita diptila** n. sp. Pl. I, f. 33.

♀. 22 mm. Head whitish-grey, face whitish. Palpi whitish-grey. Thorax light grey. Forewings elongate, slightly dilated, costa gently arched, apex pointed, termen sinuate, oblique; light violet-grey, overlaid whitish-grey, veins partially marked with obscure grey lines; two scale-tufts somewhat obliquely placed above and below fold beneath middle of wing; two small spots or dots of blackish-grey scales on tornus: cilia whitish-grey, outer half grey on termen. Hindwings bronzy-grey; cilia whitish-grey.

1 ex., Taperinha, July.

**Polypsecta** n. g.

Head rough-haired; ocelli posterior; tongue absent. Antennae nearly 1, joints closely set, ♂ simple, scape moderate. Labial palpi moderately long, ascending, second joint thickened and tufted anteriorly with dense scales, terminal joint as long as second, stout, obtuse. Maxillary palpi obsolete. Posterior tibiae rough-haired above, tarsi long. Forewings 2 from angle, 4 absent, 7 to costa (7 and 8 stalked in right wing only, 9 and 10 connate in left wing only, both these probably abnormal), 11 from towards base.

Hindwings somewhat under 1, elongate-ovate, cilia  $\frac{4}{5}$ ; 2 from  $\frac{4}{5}$ , 4 and 5 connate or short-stalked, 6 and 7 parallel.

Allied to *Myrmecozela*, but distinguished by peculiar neuration.

**Polypsecta halmeuta n. sp.** Pl. II, f. 23.

♂. 12 mm. Head pale brownish. Palpi whitish-grey-ochreous, second joint dark fuscous except apex, terminal joint with dark fuscous subapical band. Thorax light greyish-ochreous partially sprinkled dark fuscous. Forewings elongate, costa gently arched, apex rounded-obtuse, termen obliquely rounded; light greyish-ochreous, irregularly sprinkled or slightly strigulated blackish-fuscous; markings formed by dense blackish-fuscous irroration; an elongate spot on base of costa; a moderate fascia from costa at  $\frac{1}{3}$  to middle of dorsum; a spot on costa at  $\frac{2}{3}$ ; a roundish blotch in disc at  $\frac{3}{4}$ ; two small spots on costa posteriorly, second connected by a transverse shade with a small spot on lower part of termen; apical area dotted with whitish iridescence: cilia pale greyish-ochreous, an antemedian line of blackish points, some blackish-grey mixture round apex and at tornus. Hindwings grey; cilia grey-whitish, with two thick light grey shades.

1 ex., Taperinha, July.

**Psephocrita melanodoxa Meyr.** Exot. Micr. II, 255 (1919).

1 ex., Taperinha, August. Guiana.

**Tiquadra vilis Meyr.** Exot. Micr. II, 598 (1922).

1 ♀, Taperinha, June. This example is larger (24 mm) than my specimens of the same sex from the Upper Amazon, but not otherwise distinguishable.

**Tiquadra drapetica Meyr.** Exot. Micr. II, 276 (1919).

1 ex., Pará, Belem, September. Brazil, Peru.

**Pedaliotis n. g.**

Head with appressed scales, sidetufts somewhat rough; ocelli posterior; tongue rudimentary. Antennae nearly 1, joints closely set, ♂ simple, scape moderate, without pecten. Labial palpi moderate, curved, ascending, second joint much thickened with appressed scales, terminal joint shorter than second, stout, transversely compressed, obtuse. Maxillary palpi obsolete. Posterior tibiae rough-scaled above. Forewings with some raised scales in fold and disc; 2 from angle, 7 and 8 stalked, 7 to costa, 11 from towards base. Hindwings 1, elongate-ovate, cilia  $\frac{1}{3}$ ; 2 from  $\frac{1}{2}$ , 3 from angle, 4 rather approximated, 5 and 6 nearly approximated towards base.

Allied to *Tiquadra*, from which it is separable by the long antennae.

**Pedaliotis dryograptia n. sp.** Pl. I, f. 34.

♂. 18 mm. Head pale greyish-ochreous, sides of crown slightly speckled blackish. Palpi pale greyish-ochreous irrorated dark fuscous. Thorax pale greyish-ochreous partially sprinkled fuscous and blackish. Forewings rather elongate, costa gently arched, apex obtuse, termen obli-

quely rounded; pale greyish-ochreous, some scattered fuscous and blackish specks; markings formed of dense blackish-fuscous irroration; a blotch on base of costa; some dots beneath costal edge, and a small spot beyond middle; an irregular dash in disc beyond middle, preceded by a shorter mark, one on fold somewhat before this preceded by one or two dots, one beyond this towards costa and another towards tornus, one between and beyond these towards apex, and one on dorsum in middle; a marginal series of dots round apex and termen: cilia whitish-ochreous irregularly sprinkled fuscous tending to form bars. Hindwings rather dark grey; cilia whitish-grey.

1 ex., Taperinha, August.

**Episyrtia protonistis** n. sp. Pl. I, f. 35.

♂. 18—20 mm. Head pale brownish-ochreous. Palpi pale ochreous sprinkled fuscous tending to form bars. Hindwings rather dark grey; cilia Thorax whitish-ochreous sprinkled fuscous anteriorly. Forewings elongate, costa gently arched, apex obtuse, termen obliquely rounded; pale ochreous; costal half suffused brownish to middle, with dots of dark fuscous suffusion on costa, and a black mark near its extremity in disc; a semioval brown spot on middle of costa, and three others posteriorly; some slight brownish suffusion on dorsal area to beyond middle; an irregular brown blotch mixed blackish in disc beyond lower part of cell whence a thick streak runs to middle of termen, and another streak above this, attenuated anteriorly, from beyond middle to just above apex; a spot of brown suffusion on tornus: cilia ochreous-whitish barred brown. Hindwings dark grey; cilia grey.

2 ex., Taperinha, July.

**Ptychoxena tephrantha** Meyr. Exot. Micr. I, 616 (1916); *entripta* ibid. II, 88 (1917).

5 ex., Taperinha, July, August. One of these expands only 16 mm; I have a specimen of 38 mm; this disproportion is not, I think, surpassed in any species of Microlepidoptera known to me. S. America, S. Africa, India, Ceylon, Bismarck Archipelago, N. E. Australia.

**Axiagasta** n. g.

Head rough-haired; ocelli posterior; tongue absent. Antennae  $\frac{1}{2}$ , ♂ moderately ciliated, scape moderate, with slight pecten. Labial palpi moderate, subascending, second joint anteriorly with broad rounded tuft of dense scales, terminal joint as long as second, loosely scaled, somewhat pointed. Maxillary palpi obsolete. Posterior tibiae with loosely appressed hairs above. Forewings 2 from near angle, 7 to costa, 9 absent, 11 from towards base. Hindwings 1, elongate-ovate, cilia  $\frac{1}{2}$ ; 2 from  $\frac{2}{3}$ , 3 from angle, 3—7 tolerably parallel.

Perhaps allied to *Ardiosteres*.

**Axiagasta stactogramma** n. sp. Pl. I, f. 36.

♂. 17 mm. Head whitish-ochreous. Palpi whitish irrorated dark grey.

Thorax ochreous-whitish mixed ferruginous and blackish. Forewings elongate, costa moderately arched, apex obtuse, termen obliquely rounded; ferruginous-brownish irregularly marbled with blackish irroration, markings undefined except blotches on costa about middle and  $\frac{3}{4}$ , and irregularly strewn whitish dots or small spots, some of these with long possibly erectile scales, these appearing to form several irregular transverse series: cilia brownish mixed blackish-grey, with several whitish bars. Hindwings grey, darker towards apex; cilia whitish-grey, a dark grey subbasal shade.

1 ex., Taperinha, August.

**Acrolophus catagnampta n. sp.** Pl. I, f. 40.

♂. 25—27 mm. Head, palpi, thorax brown, pale-speckled, palpi extremely long, strongly recurved, reaching end of thorax, tufted with dense long scales. Antennae flatly dentate, minutely ciliated, light ochreous. Genitalia: uncus double, remote, down-curved, moderately long, slender, pointed; valva long, rather narrow, of nearly even width, down-curved, apex rounded. Forewings moderately broad, somewhat dilated, costa gently arched, apex rounded, termen rounded, little oblique; all veins separate; brown, more or less strewn with dark fuscous transverse strigulae, especially on costa; a blackish transverse spot crossing fold at about  $\frac{1}{4}$ , a triangular one on fold beneath middle of wing (in one example nearly obsolete, in another followed by two or three white dots on fold), and a roundish cloudy dark fuscous spot on end of cell: cilia brown. Hindwings fuscous; cilia brownish, tips pale.

3 ex., Taperinha, July. Allied to *xylotella* Walk. from Jamaica.

**Acrolophus erethismia n. sp.** Pl. I, f. 41.

♂. 20—21 mm. Head greyish, whitish-speckled. Palpi extremely long, strongly recurved, reaching beyond middle of thorax, tufted with dense scales, grey-whitish suffused dark grey on outer side and towards apex. Antennae bipectinated (4), whitish-grey. Thorax pale greyish-ochreous, sprinkled or suffused light grey. Genitalia: uncus rising from a triangular plate, single, downcurved, moderate, slender, pointed; valva moderate, rather narrow, of even width, straight, apex rounded. Forewings moderate, costa gently arched, apex rounded, termen obliquely rounded; all veins separate; light greyish-ochreous; some irregular rather scanty dark fuscous strigulation along costa and towards termen and posterior  $\frac{2}{3}$  of dorsum; dorsal half faintly yellowish-tinged anteriorly, and with a more or less developed cloud of dark fuscous irroration not reaching base or tornus; a dark fuscous strigula on end of cell: cilia ochreous-whitish mixed fuscous (injured). Hindwings grey; cilia light greyish.

2 ex., Taperinha, July, August. Not very near any form known to me.

## Explication of Plates.

## Plate I.

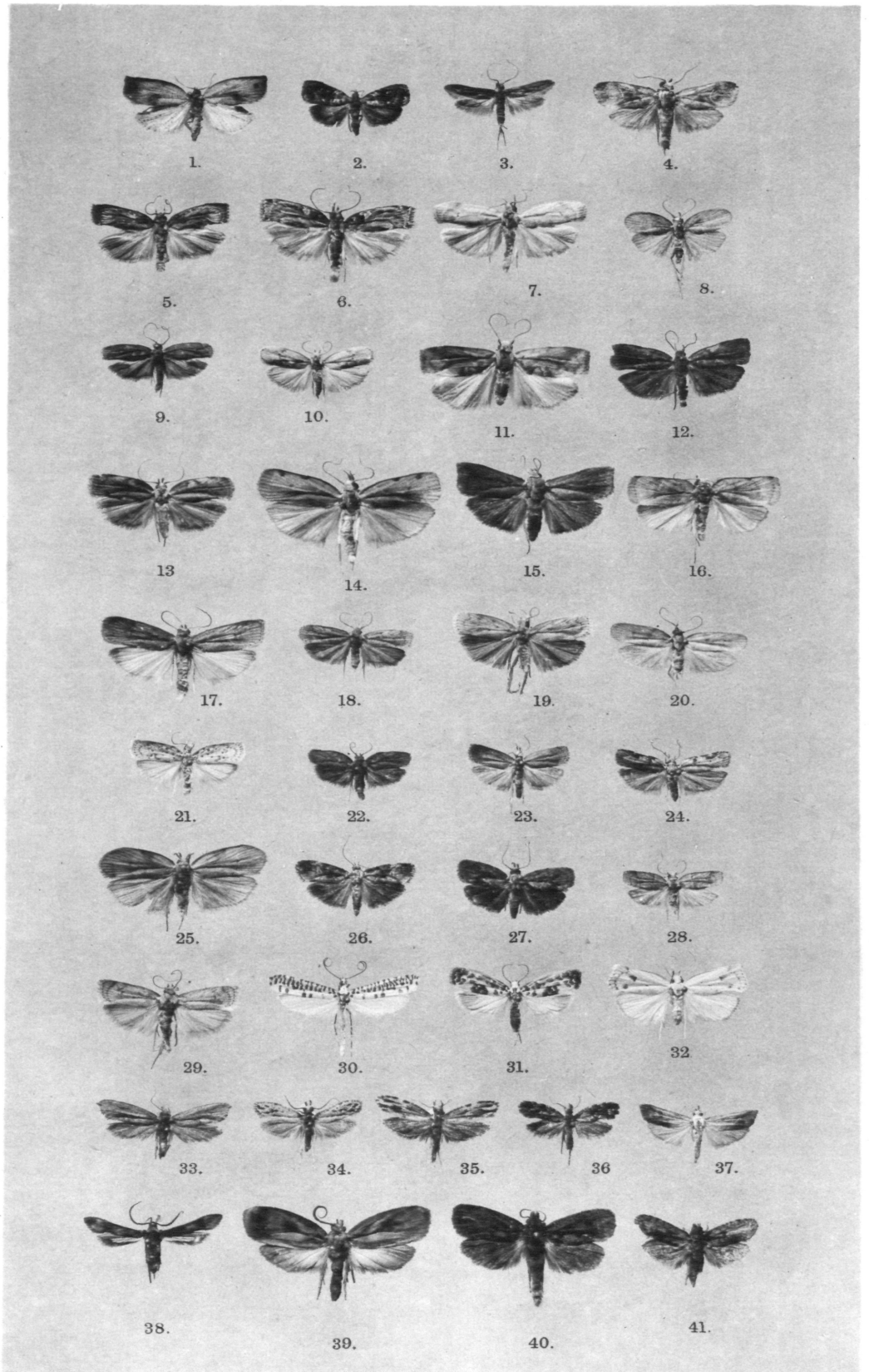
(All figures in natural size.)

- |  |  |
|--|--|
| Fig. 1. <i>Cacoecia biforata</i> .     | Fig. 22. <i>Stenoma irascens</i> .     |
| „ 2. <i>Parachanda polycosma</i> .     | „ 23. <i>Stenoma malacoxesta</i> .     |
| „ 3. <i>Blastobasis atrosema</i> .     | „ 28. <i>Machimia neuroscia</i> .      |
| „ 4. <i>Eomichla leucoclista</i> .     | „ 25. <i>Stenoma harpoceros</i> .      |
| „ 5. <i>Antaeotricha arachniotis</i> . | „ 26. <i>Ptilogenes strabonia</i> .    |
| „ 6. <i>Antaeotricha quatiens</i> .    | „ 27. <i>Ptilogenes elaeostola</i> .   |
| „ 7. <i>Antaeotricha hemitephras</i> . | „ 28. <i>Ptilogenes trizeucta</i> .    |
| „ 8. <i>Pomphocrita obsordescens</i> . | „ 29. <i>Stenoma sublunaris</i> .      |
| „ 9. <i>Stenoma lepidocarpa</i> .      | „ 30. <i>Atteva numeratrix</i> .       |
| „ 10. <i>Stenoma syngraphopis</i> .    | „ 31. <i>Ethmia cypraspis</i> .        |
| „ 11. <i>Stenoma astacopis</i> .       | „ 32. <i>Stenoma cycnographa</i> .     |
| „ 12. <i>Stenoma meridogramma</i> .    | „ 33. <i>Colpocrita diptila</i> .      |
| „ 13. <i>Stenoma notogramma</i> .      | „ 34. <i>Pedaliotis dryograptata</i> . |
| „ 14. <i>Stenoma heterosema</i> .      | „ 35. <i>Episyrtia protonistis</i> .   |
| „ 15. <i>Stenoma neoperca</i> .        | „ 36. <i>Axiagasta stactogramma</i> .  |
| „ 16. <i>Stenoma ptychobathra</i> .    | „ 37. <i>Saridacma ilyopis</i> .       |
| „ 17. <i>Stenoma coniophaea</i> .      | „ 38. <i>Percnarcha strategica</i> .   |
| „ 18. <i>Stenoma explicita</i> .       | „ 39. <i>Urodus aphanoptis</i> .       |
| „ 19. <i>Stenoma acribota</i> .        | „ 40. <i>Acrolophus catagnampta</i> .  |
| „ 20. <i>Stenoma unguentata</i> .      | „ 41. <i>Acrolophus erethismia</i> .   |
| „ 21. <i>Stenoma horocharis</i> .      |  |

## Plate II.

(All figures magnified to double of natural size.)

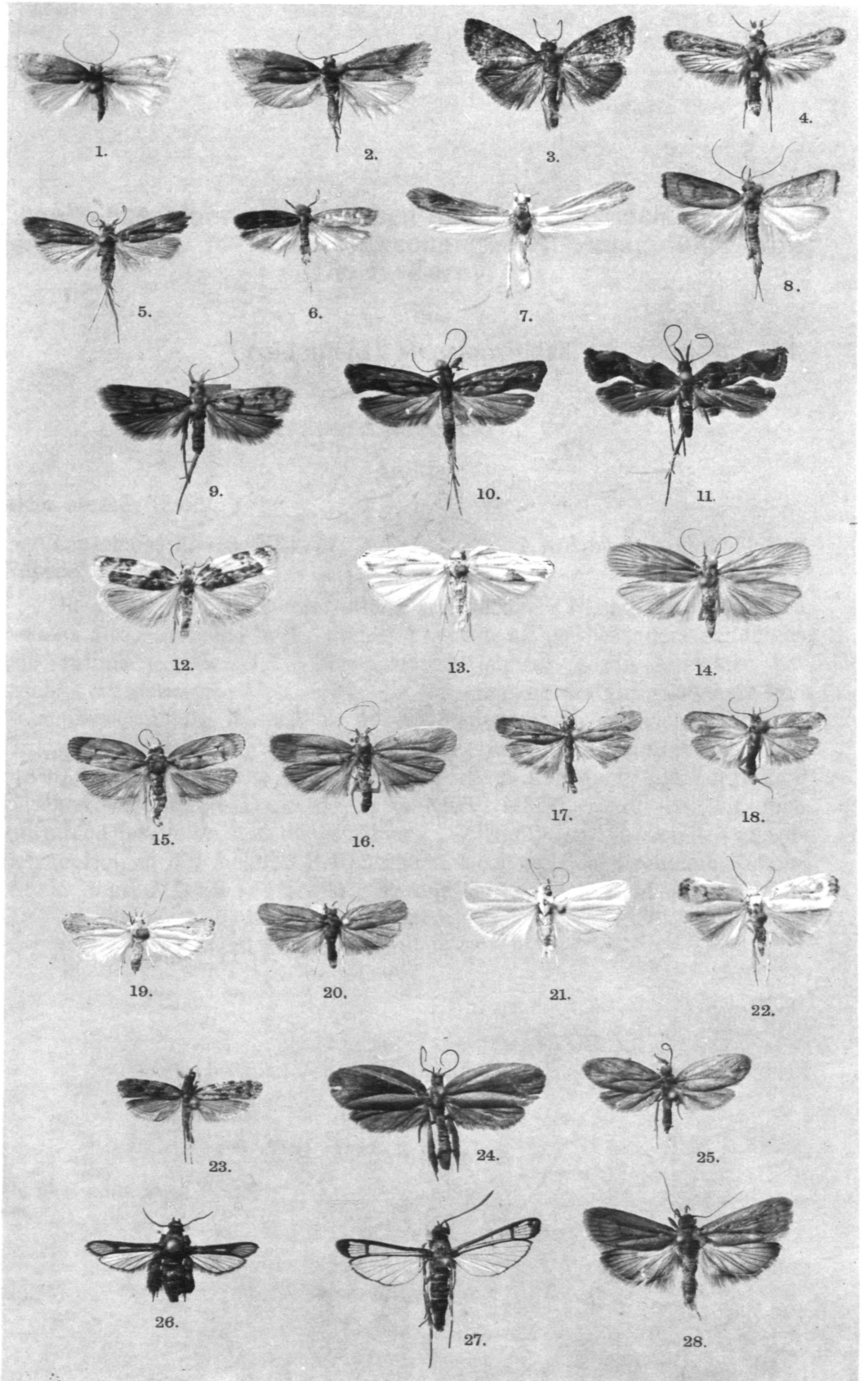
- |                                       |                                      |
|---------------------------------------|--------------------------------------|
| Fig. 1. <i>Tortrix stictioneura</i> . | Fig. 15. <i>Stenoma biannulata</i> . |
| „ 2. <i>Tortrix degenerans</i> .      | „ 16. <i>Stenoma compsocoma</i> .    |
| „ 3. <i>Acharneodes cnemoptila</i> .  | „ 17. <i>Stenoma hyalocryptis</i> .  |
| „ 4. <i>Pessograptis cyanactis</i> .  | „ 18. <i>Stenoma methystica</i> .    |
| „ 5. <i>Stibarenches bifissa</i> .    | „ 19. <i>Stenoma aplytopis</i> .     |
| „ 6. <i>Glyphidocera indocilis</i> .  | „ 20. <i>Stenoma infecta</i> .       |
| „ 7. <i>Amblytenes lunatica</i> .     | „ 21. <i>Stenoma metroleuca</i> .    |
| „ 8. <i>Machimia trunca</i> .         | „ 22. <i>Ptilogenes hesmarcha</i> .  |
| „ 9. <i>Vazugada phoenogramma</i> .   | „ 23. <i>Polypsecta halmeuta</i> .   |
| „ 10. <i>Myrophila caryoplecta</i> .  | „ 24. <i>Urodus opticosema</i> .     |
| „ 11. <i>Cymotricha amphicosma</i> .  | „ 25. <i>Urodus cyclopica</i> .      |
| „ 12. <i>Antaeotricha amphizyga</i> . | „ 26. <i>Bombosceles cyanomyia</i> . |
| „ 13. <i>Stenoma juvenalis</i> .      | „ 27. <i>Aegeria corporalis</i> .    |
| „ 14. <i>Stenoma umbrinervis</i> .    | „ 24. <i>Stenoma picrantis</i> .     |



Lichtdruck v. Max Jaffé, Wien







Lichtdruck v. Max Jaffé, Wien

# ZOBODAT - [www.zobodat.at](http://www.zobodat.at)

Zoologisch-Botanische Datenbank/Zoological-Botanical Database

Digitale Literatur/Digital Literature

Zeitschrift/Journal: [Annalen des Naturhistorischen Museums in Wien](#)

Jahr/Year: 1930

Band/Volume: [44](#)

Autor(en)/Author(s): Meyrick-Thornhanger Edward

Artikel/Article: [Ergebnisse einer zoologischen Sammelreise nach Brasilien, insbesondere in das Amazonasgebiet, ausgeführt von Dr. H. Zerny. V. Teil. Micro-Lepidoptera. \(Tafel I., II.\) 223-268](#)