



The Governor's 2003-05 Biennial Budget Proposal

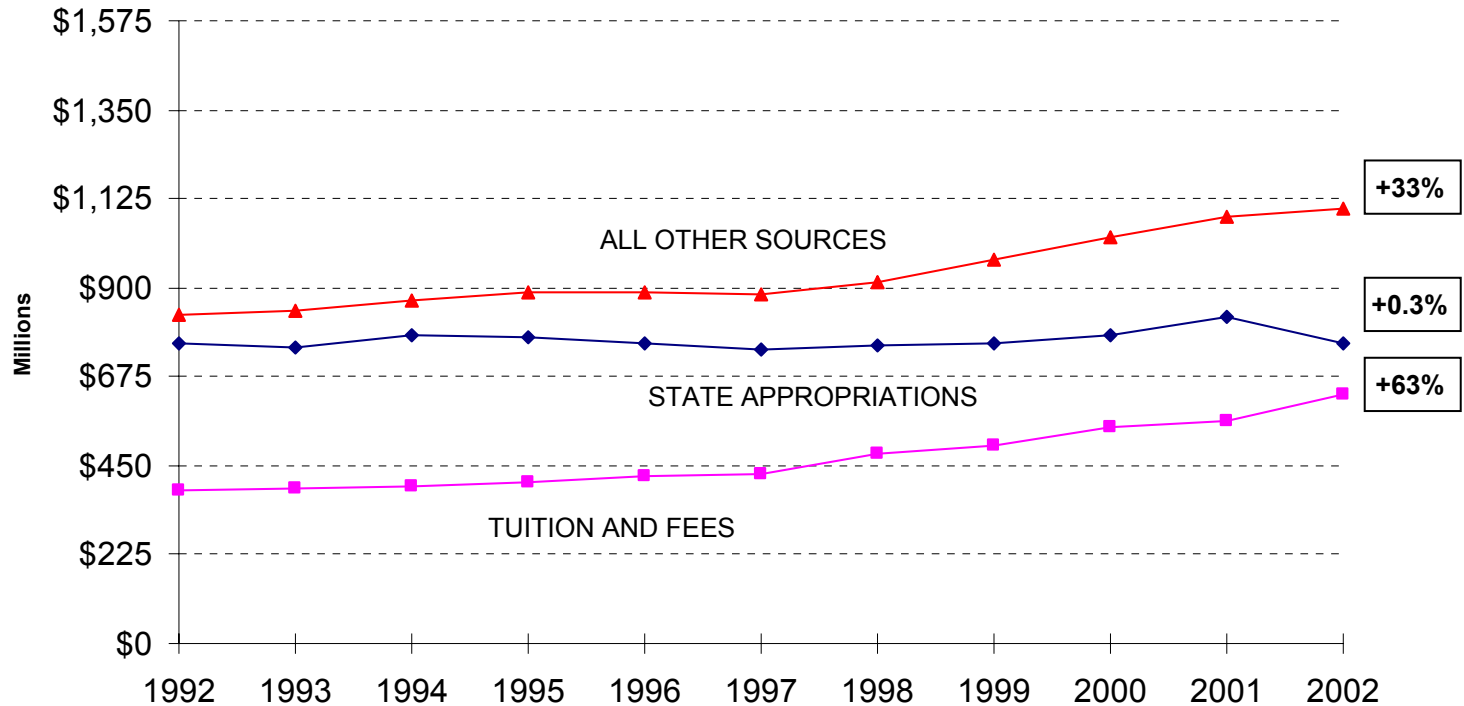
March 6, 2003



UW Budget Up; State Support Flat

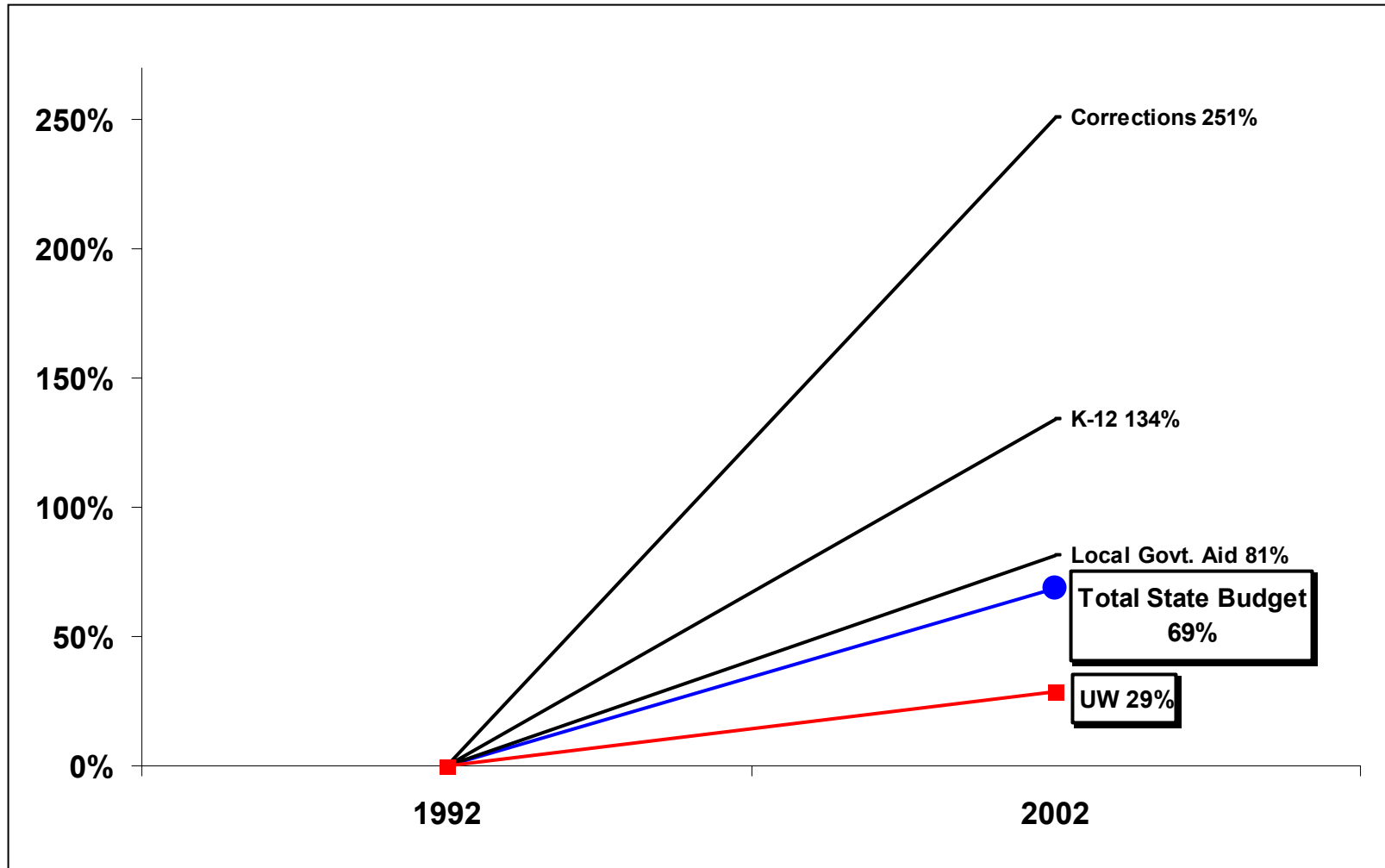
Ten-Year Comparison of Revenues

ADJUSTED FOR INFLATION, 1992 - 2002





State of Wisconsin Spending Growth FY 1992-2002





Base Cuts to UW State Funding

1993-94	-\$2,949,200
1994-95	-\$500,000
1995-96	-\$23,952,100
1996-97	-\$19,499,300
1997-98	-\$2,937,300
1998-99*	+\$620,800
2000-01	-\$1,091,800
2001-02	-\$21,670,600
2002-03	<u>-\$28,039,400</u>
Total Cuts	-\$100,018,900

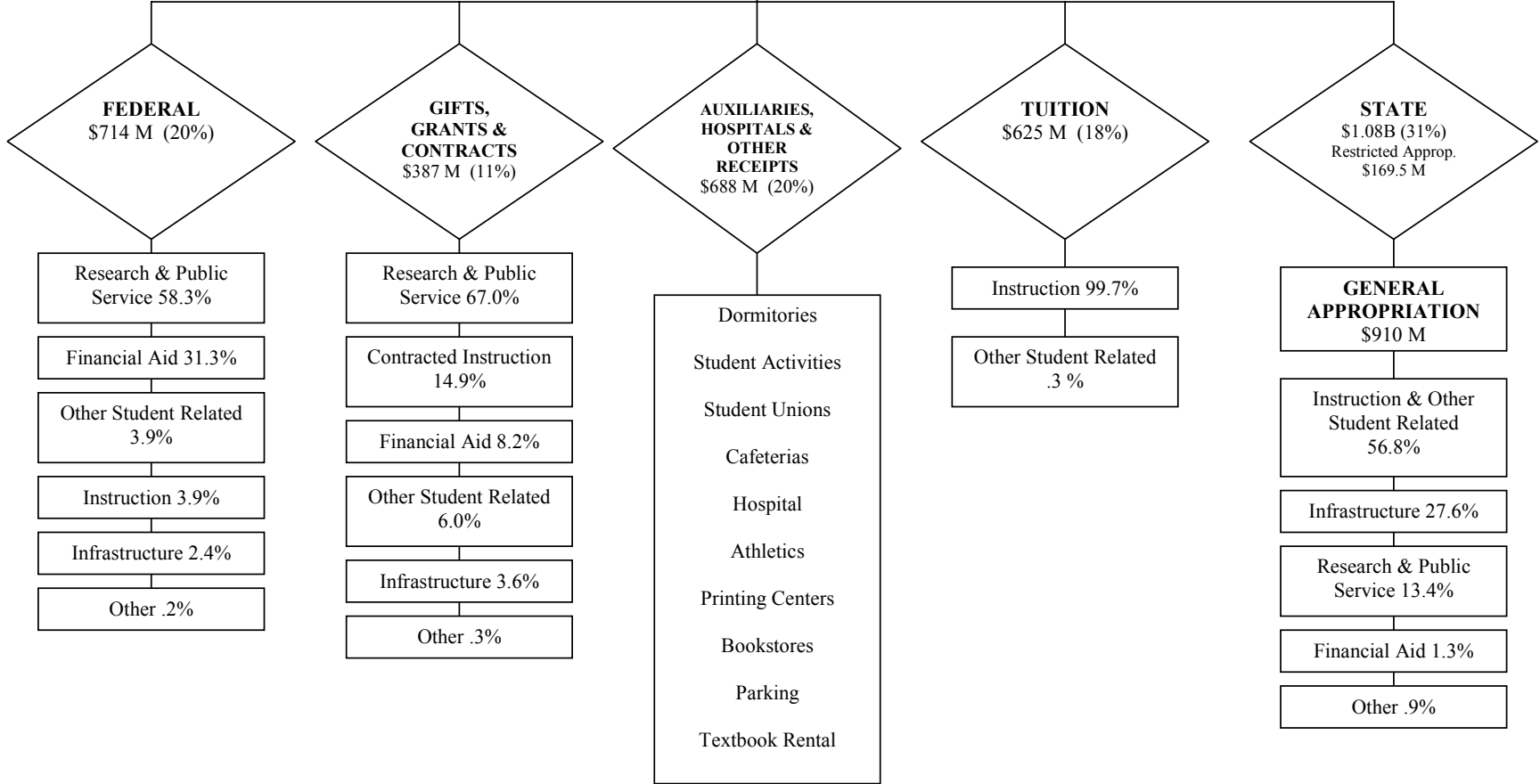
* This was a previous cut that was restored. In 1999-00, no cuts were administered.



UNIVERSITY OF WISCONSIN SYSTEM

2002-03 Operating Budget

\$3.49 Billion



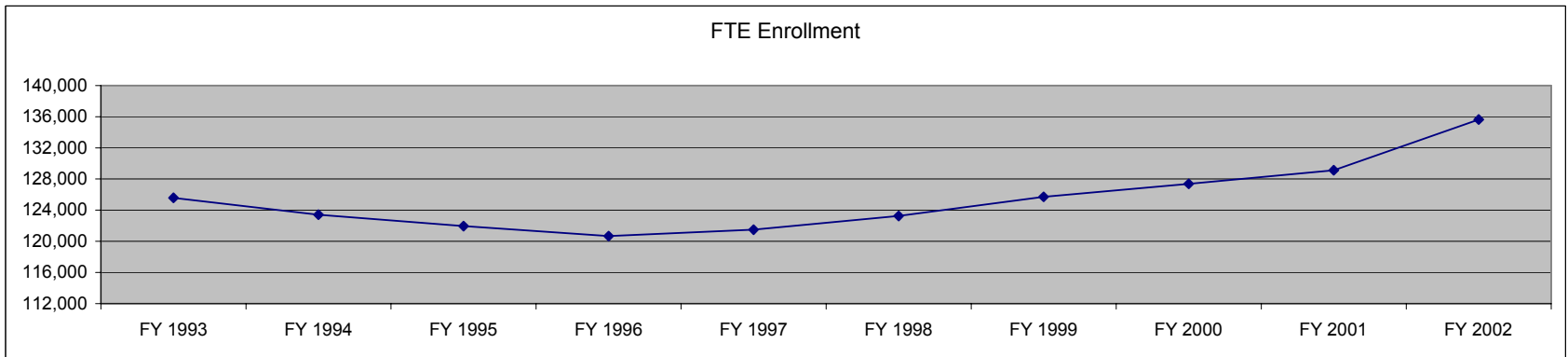
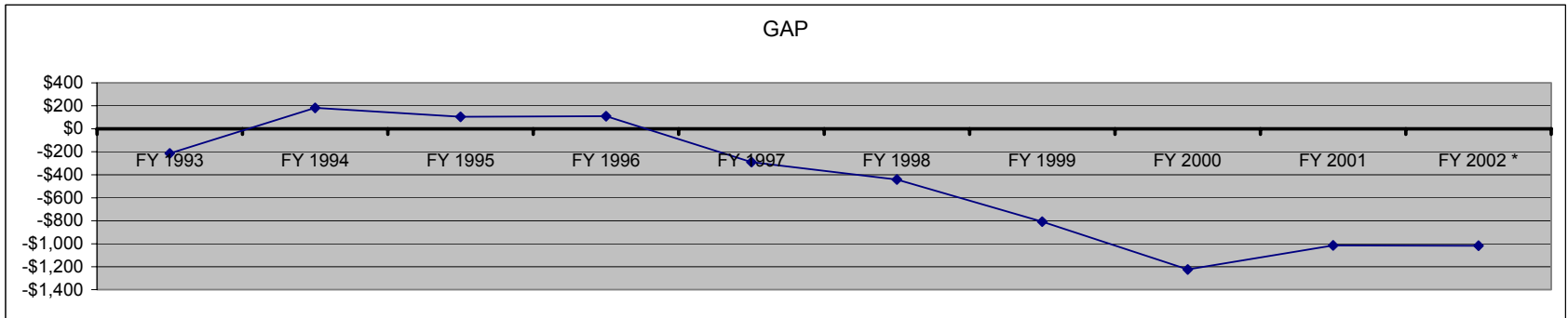
(1) Other Student Related = Student Services and Academic Support
 (2) Infrastructure = Physical Plant, Institutional Support
 (3) Other = Farm Operations, Hospital, and Auxiliaries



GAP in Spending Per Student from the National Average versus FTE Enrollment

	FY 1993	FY 1994	FY 1995	FY 1996	FY 1997	FY 1998	FY 1999	FY 2000	FY 2001	FY 2002 *
GAP	-\$214	\$182	\$104	\$110	-\$290	-\$441	-\$808	-\$1,224	-\$1,014	-1,017

	FY 1993	FY 1994	FY 1995	FY 1996	FY 1997	FY 1998	FY 1999	FY 2000	FY 2001	FY 2002
FTE Enrollment	125,586	123,412	121,947	120,666	121,480	123,246	125,703	127,370	129,128	135,634



* projected



The Governor's 2003-05 Biennial Budget Proposal

March 6, 2003



2001-03 Budget Reductions

Distribution of 2001-03 Reductions by Institution*

	Combined Act 16 & 109 <u>Reductions</u>	Additional \$8.3M Budget <u>Reduction</u>	Total 2001-03 Base <u>Reductions</u>
Madison	\$15,744,366	\$3,124,800	\$18,869,166
Milwaukee	\$8,080,316	\$1,103,100	\$9,183,416
Eau Claire	\$1,949,309	\$409,900	\$2,359,209
Green Bay	\$757,203	\$197,700	\$954,903
La Crosse	\$1,008,029	\$354,000	\$1,362,029
Oshkosh	\$1,092,888	\$390,400	\$1,483,288
Parkside	\$766,874	\$185,000	\$951,874
Platteville	\$1,378,368	\$240,900	\$1,619,268
River Falls	\$731,486	\$231,100	\$962,586
Stevens Point	\$1,769,037	\$350,700	\$2,119,737
Stout	\$1,274,204	\$323,300	\$1,597,504
Superior	\$424,414	\$120,600	\$545,014
Whitewater	\$1,851,040	\$369,100	\$2,220,140
Colleges	\$1,375,488	\$304,300	\$1,679,788
Extension	\$1,667,902	\$349,200	\$2,017,102
Sys Admin/wide	<u>\$610,503</u>	<u>\$213,900</u>	<u>\$824,403</u>
Total*	\$40,481,427	\$8,268,000	\$48,749,427

*Does not include targeted GPR reductions of \$9.3 million for: UW-Madison Intercollegiate Athletics; UW-Madison fleet maintenance consolidation; Non-resident undergraduate student tuition offset; environmental education grant offset; pharmacy internship board elimination; and driver education funding elimination.



Budget Reduction Principles

- **Administrative Reductions**
- **Program Consolidations**
- **Tuition Increase to the Peers**
- **Access as a Last Resort**



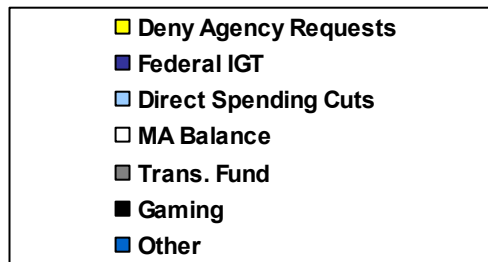
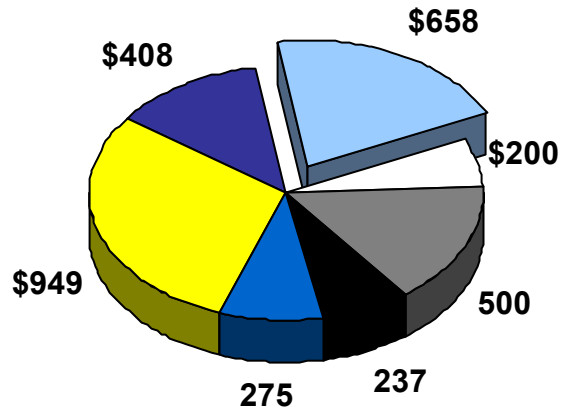
GPR Reduction & Tuition Offset

	<u>2003-04</u>	<u>2004-05</u>	<u>Biennial</u>
GPR	-\$110 M	-\$140 M	-\$250 M
Tuition Offset	<u>\$50 M</u>	<u>\$100 M</u>	<u>\$150 M</u>
Budget Reduction	-\$60 M	-\$40 M	-\$100 M

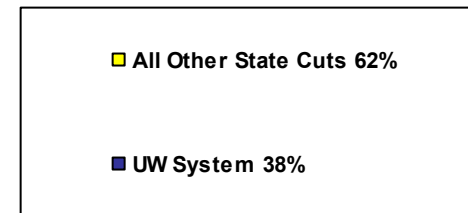
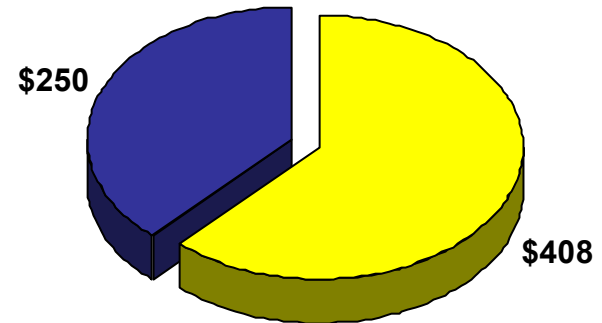


Governor's Proposed 2003-05 Budget

**2003-05 Proposed Budget
Deficit Solution \$3.2 billion**



**Allocation of \$658 million
proposed GPR cuts**





2003-04 Net Budget Reduction

(After Tuition Offset Of \$50,000,000)

	\$60,000,000 2003-04 Base <u>Reduction</u>	Economic Impact of <u>Reductions</u>
Madison	\$23,090,550	\$57,726,375
Milwaukee	\$7,914,000	\$19,785,000
Eau Claire	\$2,940,600	\$7,351,500
Green Bay	\$1,418,550	\$3,546,375
La Crosse	\$2,539,350	\$6,348,375
Oshkosh	\$2,800,800	\$7,002,000
Parkside	\$1,327,050	\$3,317,625
Platteville	\$1,728,150	\$4,320,375
River Falls	\$1,657,950	\$4,144,875
Stevens Point	\$2,515,800	\$6,289,500
Stout	\$2,319,450	\$5,798,625
Superior	\$865,050	\$2,162,625
Whitewater	\$2,648,100	\$6,620,250
Colleges	\$2,182,950	\$5,457,375
Extension	\$2,505,600	\$6,264,000
Sys Admin/wide	<u>\$1,546,050</u>	<u>\$3,865,125</u>
Total	\$60,000,000	\$150,000,000



Reduce 650 State Positions

	650 FTE GPR Position <u>Reduction</u>
Madison	258.40
Milwaukee	89.84
Eau Claire	32.55
Green Bay	16.19
LaCrosse	27.34
Oshkosh	32.99
Parkside	15.37
Platteville	18.31
River Falls	18.21
Stevens Point	28.70
Stout	25.32
Superior	10.53
Whitewater	29.22
Colleges	25.82
Extension	14.00
System Admin/Wide	<u>7.21</u>
Total System	650.00

Proration based on January, 2003 authorized levels



Resident Undergraduate Tuition and Fees

	Current 2002-03 Tuition and Fees			With Proposed Increases* 2003-04 Tuition and Fees		
		Peer Midpoint	Rank		Peer Midpoint**	Rank
UW-Madison	\$4,423	\$5,509	8th of 9	\$5,123	\$5,950	7th of 9
UW-Milwaukee	\$4,353	\$5,670	12th of 15	\$5,053	\$6,124	12th of 15
UW Comprehensives	\$3,604	\$4,462	34th of 35	\$4,104	\$4,826	31st of 35

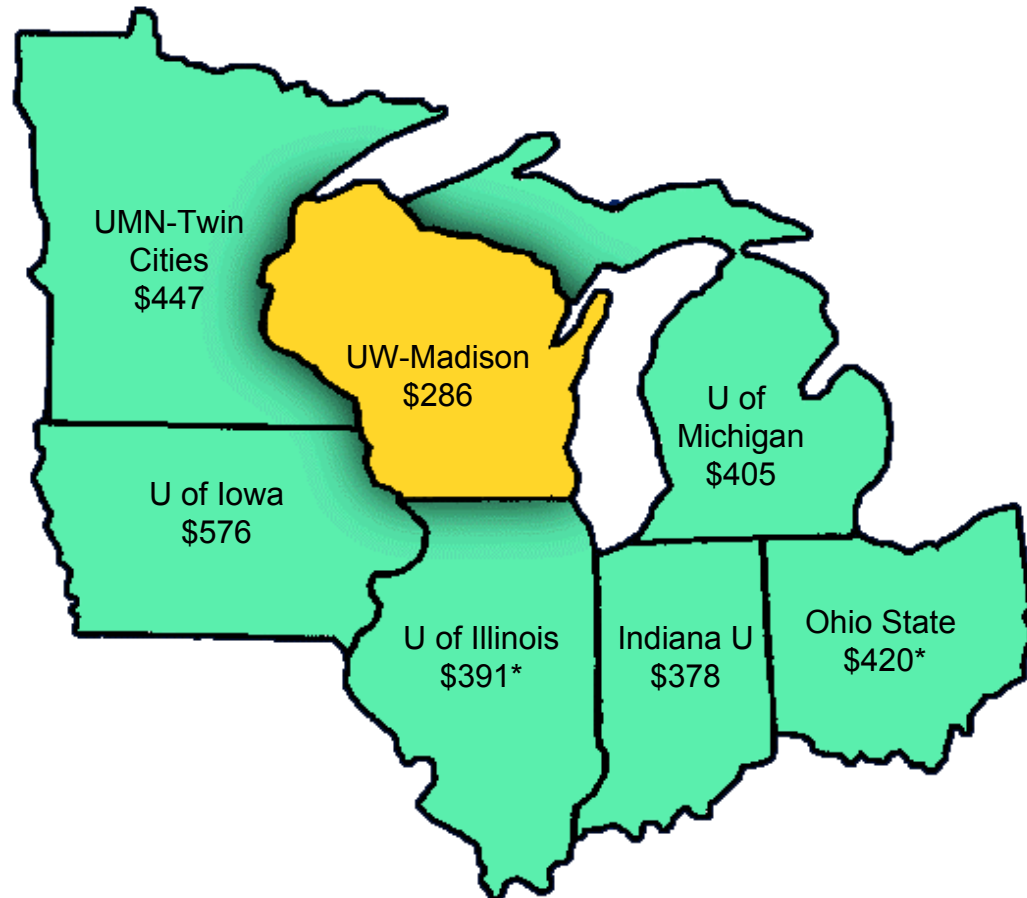


Offset in part by \$6.9 M increase in financial aid.

* \$350/sem. Madison & Milwaukee; \$250/sem. Comps
 ** Calculated using estimated tuition increases for peers



2002-03 Tuition Increase (Flagship Institutions)



* Tuition Increase for Returning Students



Resident Undergraduate Tuition and Fees

	Current 2002-03 Tuition and Fees			With Proposed Increases* 2003-04 Tuition and Fees		
		Peer Midpoint	Rank		Peer Midpoint**	Rank
UW-Madison	\$4,423	\$5,509	8th of 9	\$5,123	\$5,950	7th of 9
UW-Milwaukee	\$4,353	\$5,670	12th of 15	\$5,053	\$6,124	12th of 15
UW Comprehensives	\$3,604	\$4,462	34th of 35	\$4,104	\$4,826	31st of 35



Offset in part by \$6.9 M increase
in financial aid.

* \$350/sem. Madison & Milwaukee; \$250/sem. Comps

** Calculated using estimated tuition increases for peers

