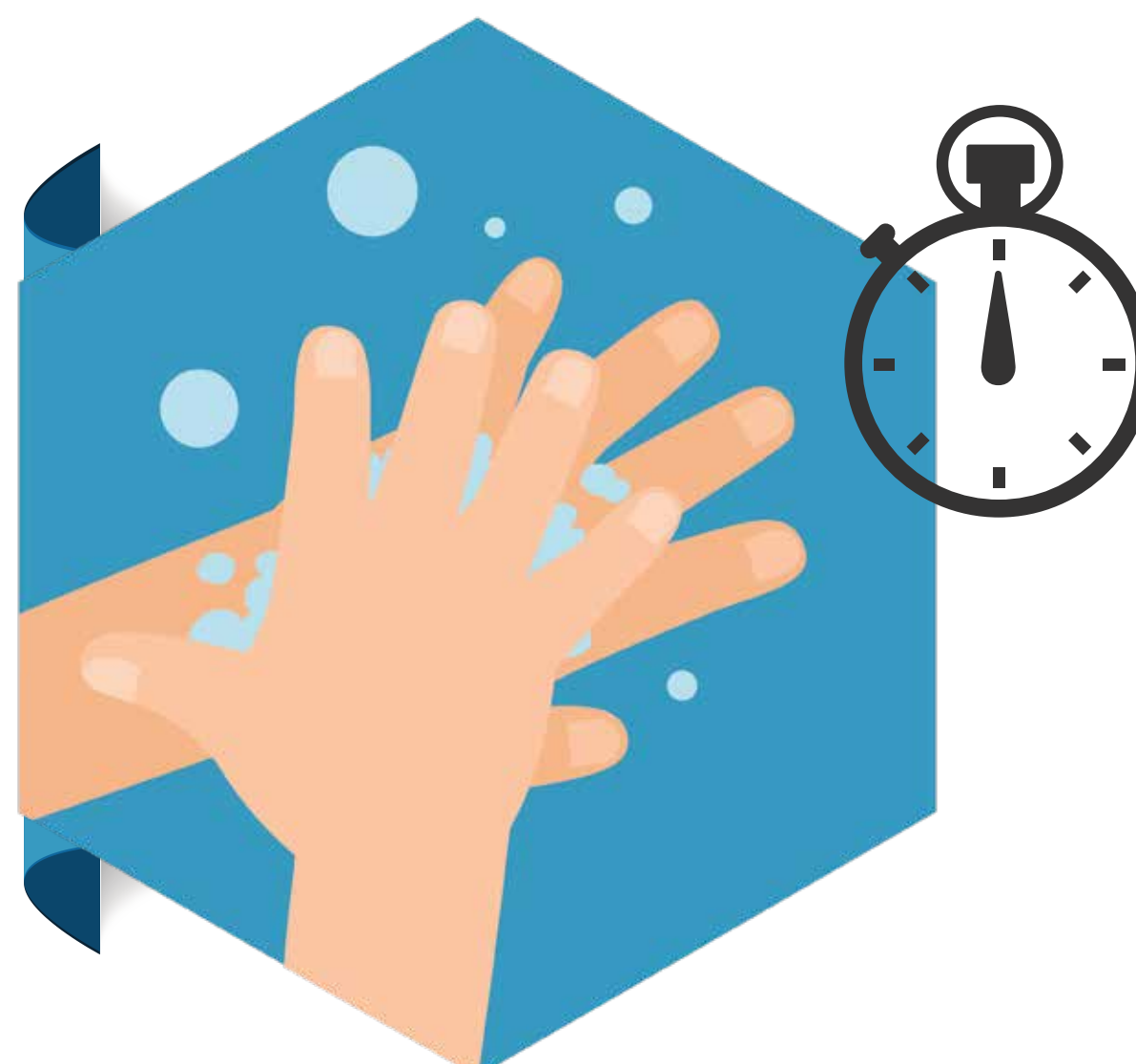


How to put on PPE (when all PPE items are needed)



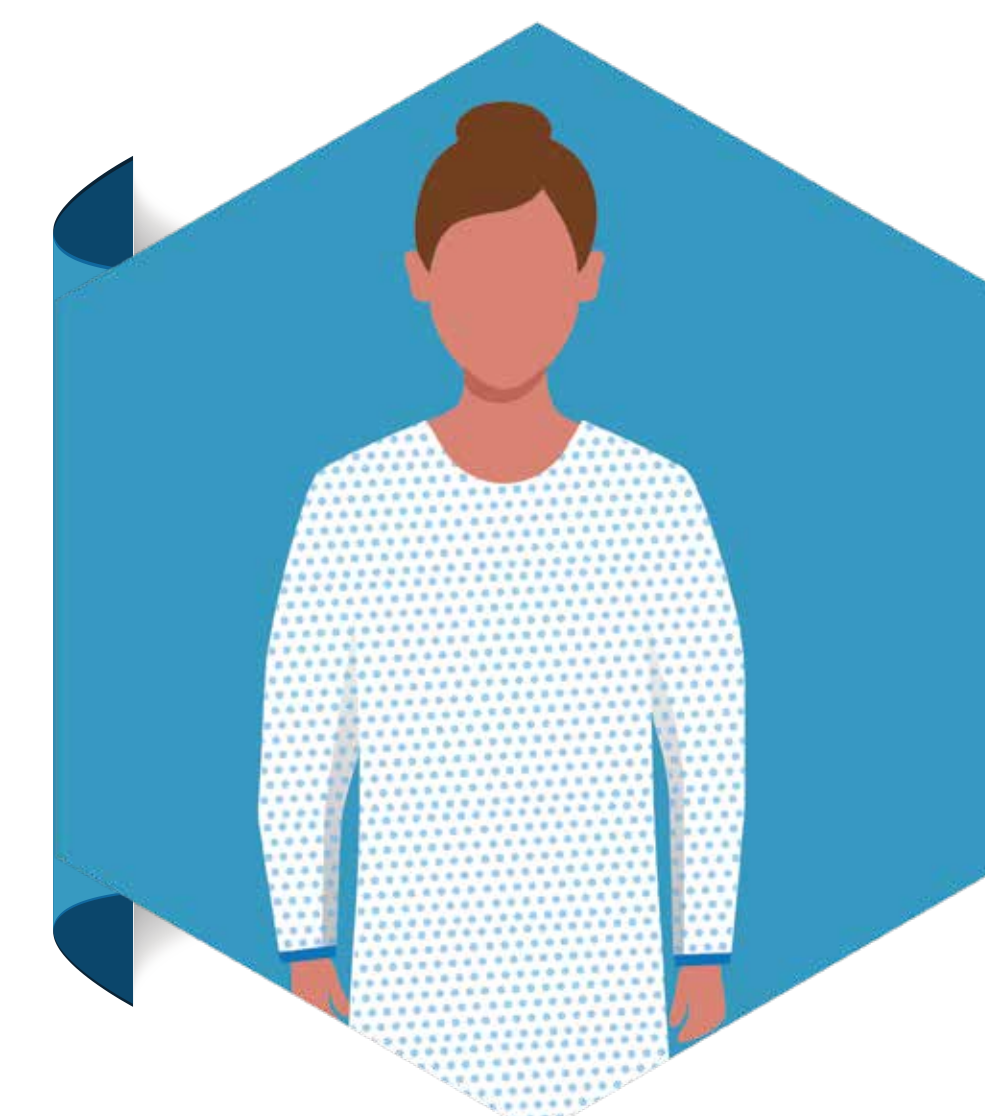
Step 1

- Identify hazards and manage risk
- Gather the necessary PPE
- Plan where to put on and take off PPE
- Do you have a buddy? Mirror?
- Do you know how you will deal with waste?



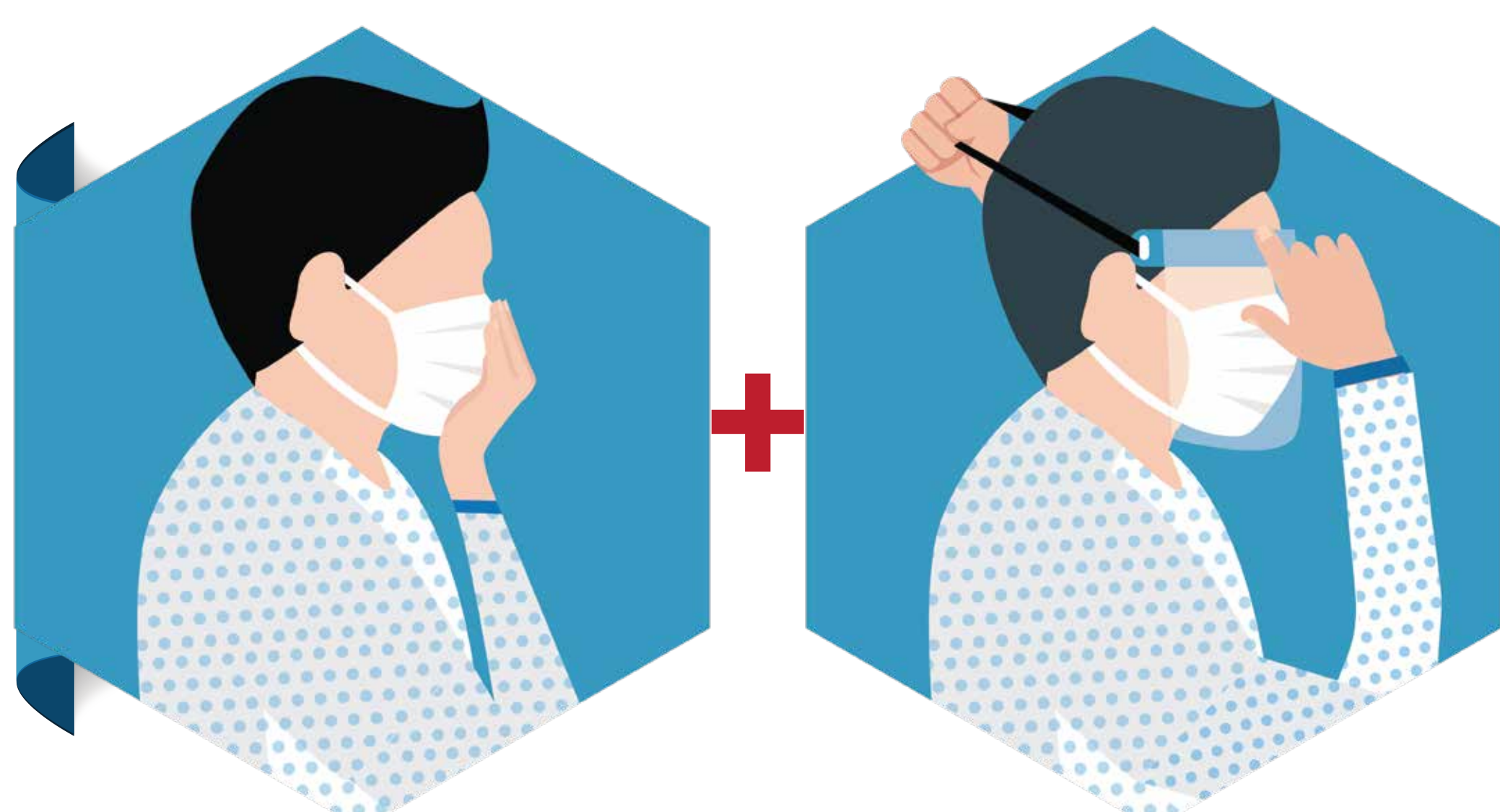
Step 2

Perform hand hygiene using soap and water (40-60 seconds) or alcohol based hand rub (20-30 seconds)



Step 3

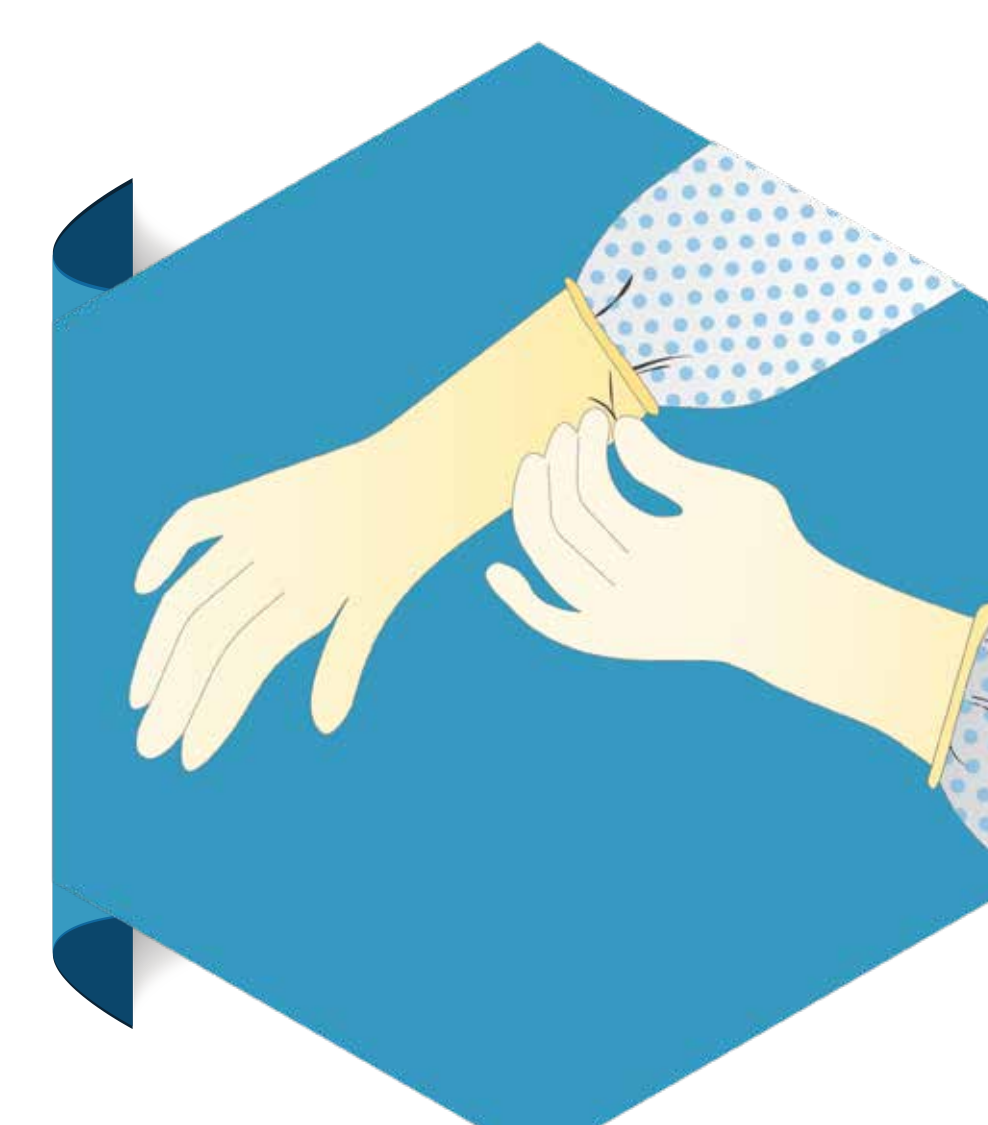
Put on a gown



Step 4

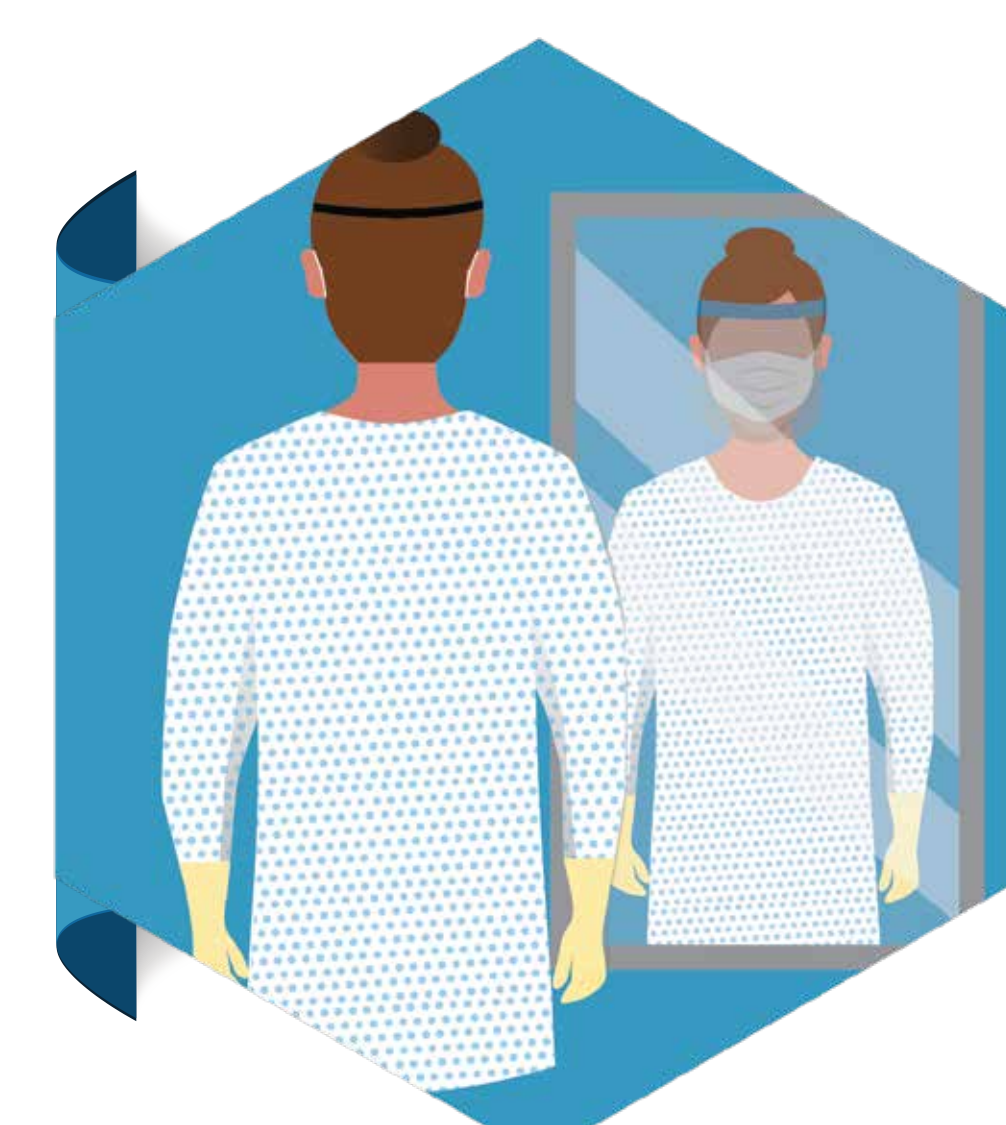
Put on medical mask and eye protection (e.g. face shield or goggles)

Note: If performing an aerosol-generating procedure (e.g. aspiration of respiratory tract, intubation, resuscitation, bronchoscopy), a particulate respirator (e.g. US NIOSH-certified N95, EU FFP2, or equivalent respirator) should be used in combination with eye protection. Do user seal check if using a particulate respirator.



Step 5

Put on gloves over gown cuff



Step 6

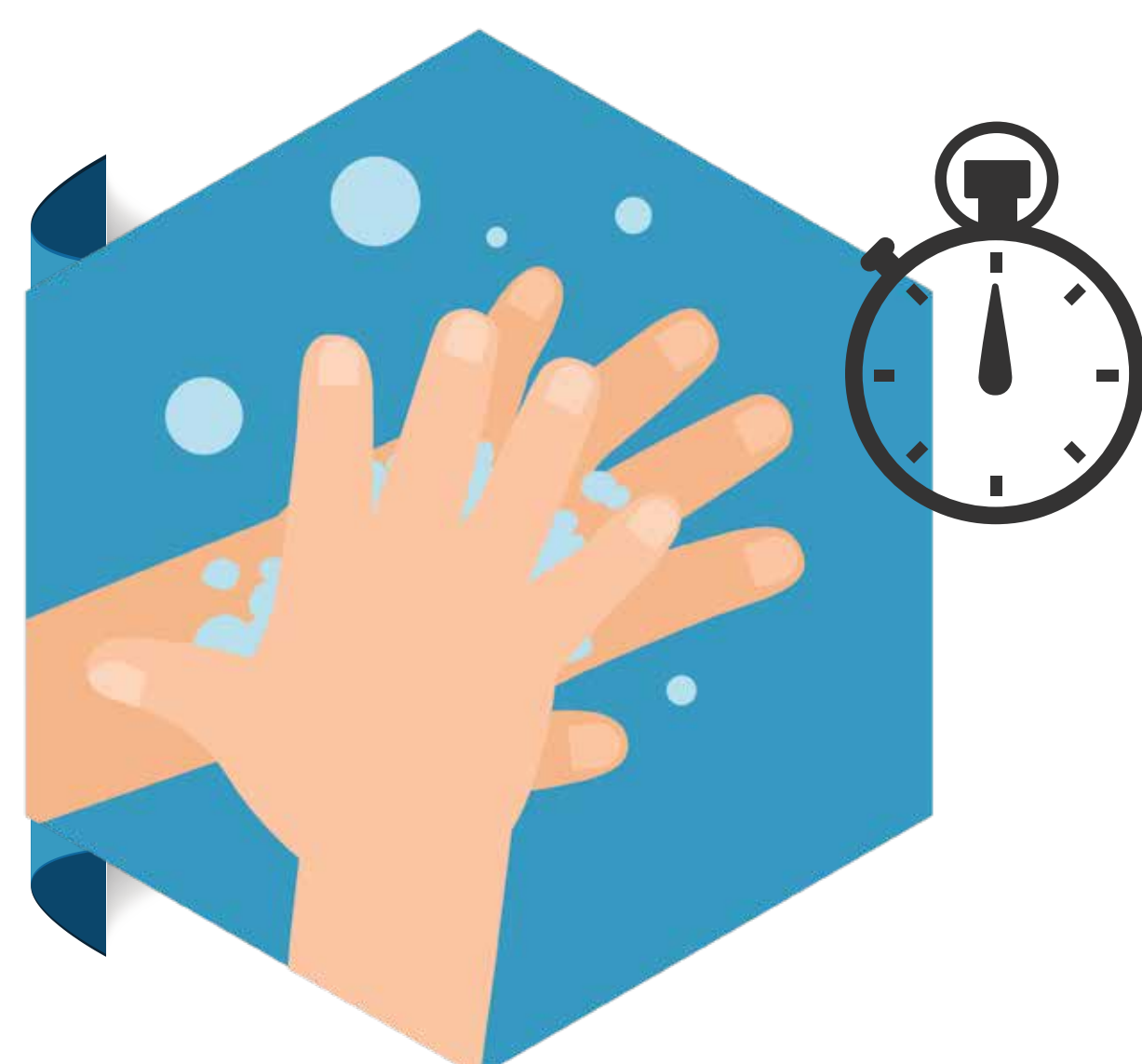
Visually check yourself in mirror or with buddy

How to remove PPE



Step 1

Remove gloves



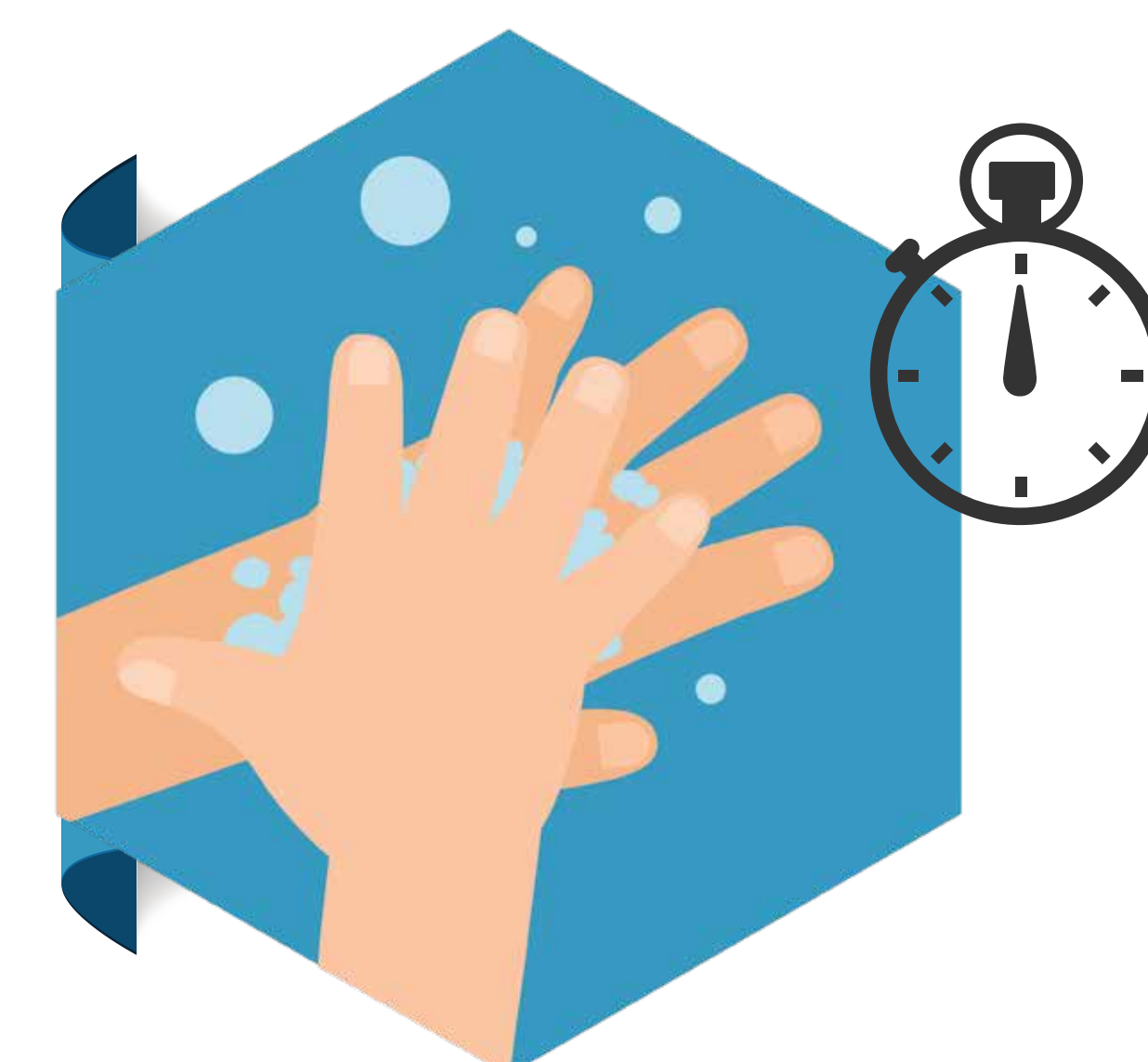
Step 2

Perform hand hygiene using soap and water (40-60 seconds) or alcohol based hand rub (20-30 seconds)



Step 3

- Peel off gown roll inside, out
- Dispose gloves and gown safely



Step 4

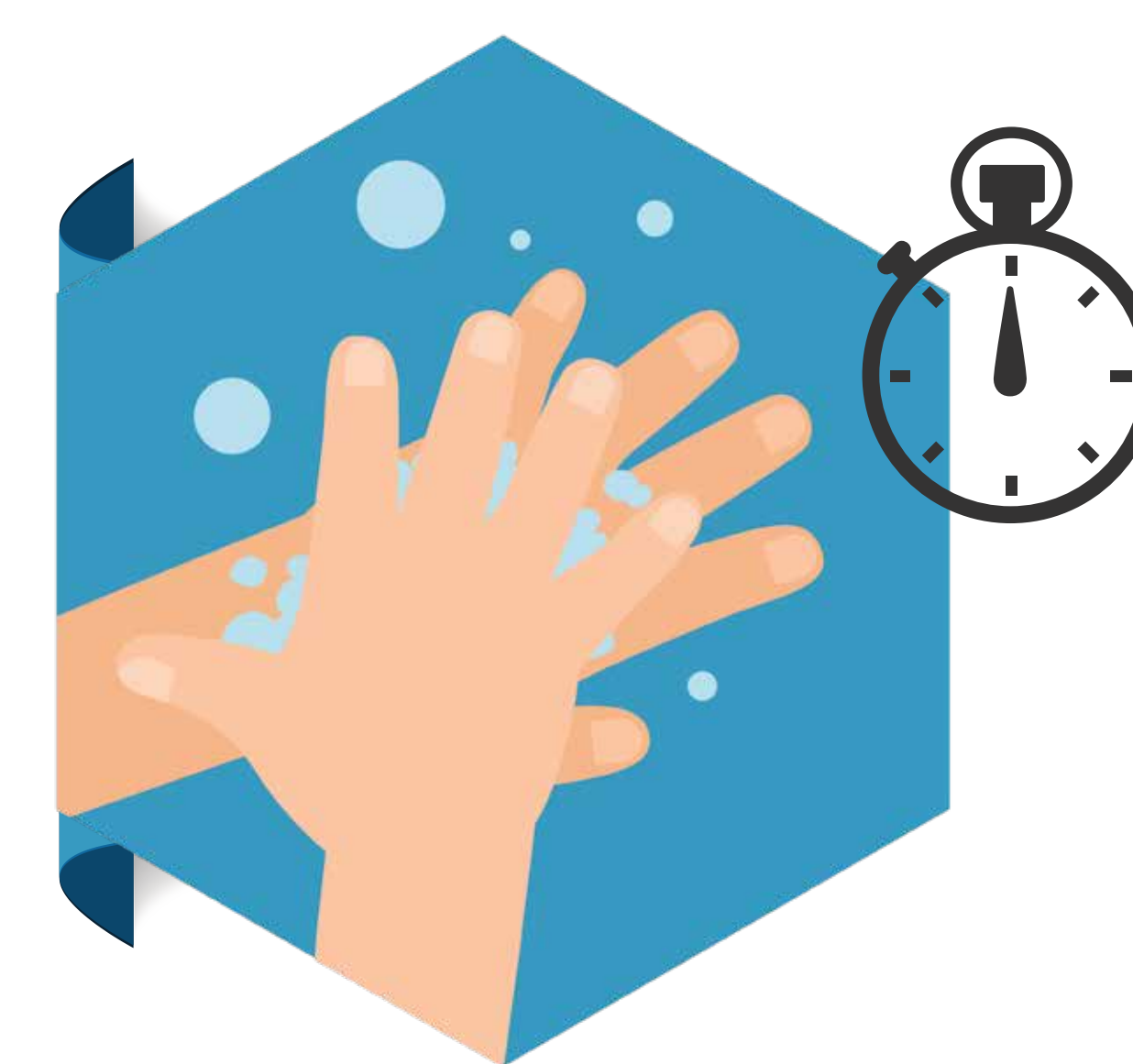
Perform hand hygiene using soap and water (40-60 seconds) or alcohol based hand rub (20-30 seconds)



Step 5

If wearing eye protection and mask:

- Remove eye protection from behind
- Put eye protection in a separate container for reprocessing
- Remove mask from behind
- Move mask away from face
- Do not touch front of mask
- Do not allow the contaminated mask to touch any surface
- Dispose of mask safely



Step 6

Perform hand hygiene using soap and water (40-60 seconds) or alcohol based hand rub (20-30 seconds)

Personal Protective Equipment (PPE)

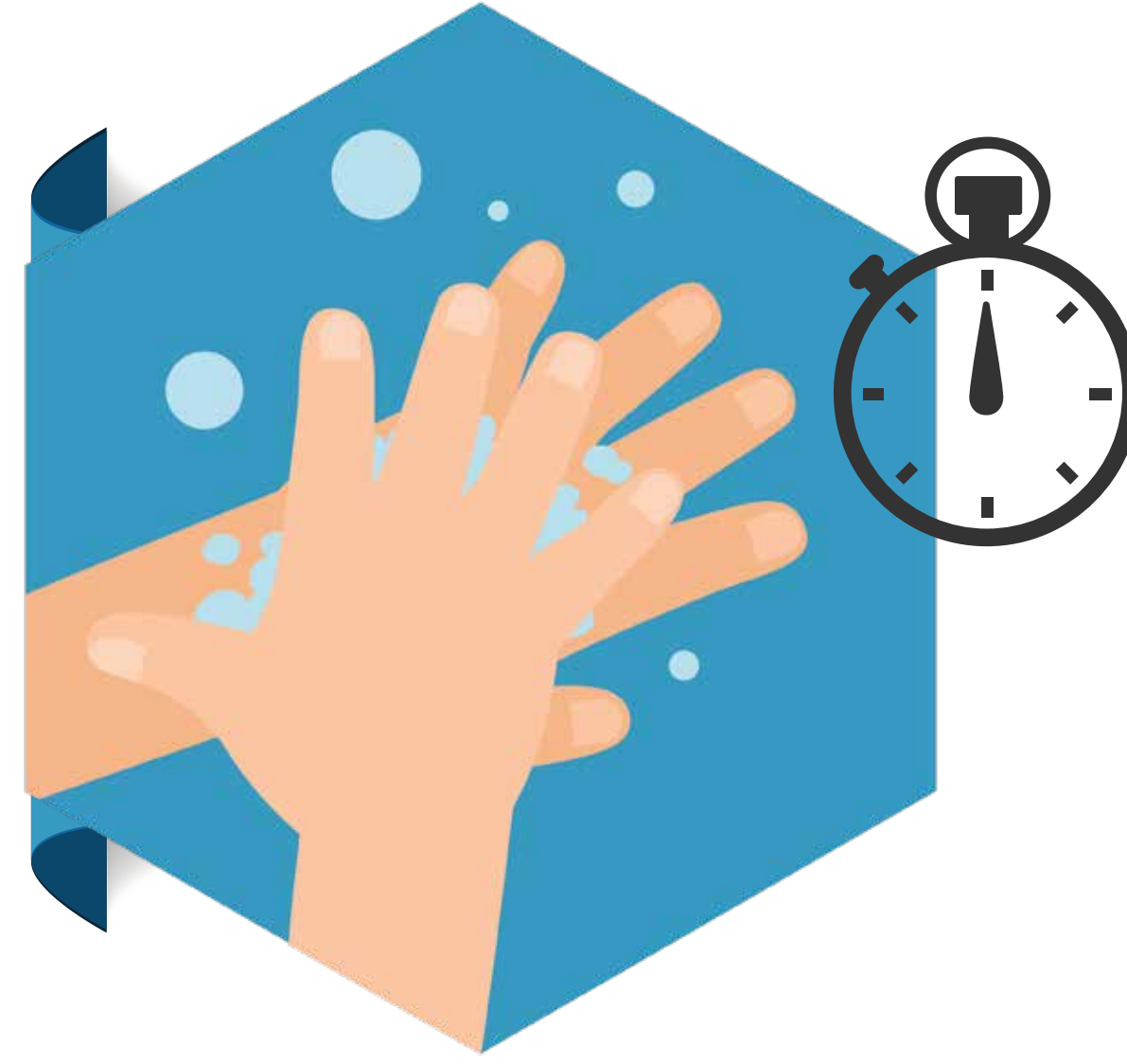
How to put on PPE (for aerosol generating procedures)

Note: Aerosol generating procedures include aspiration of respiratory tract, intubation, resuscitation, and bronchoscopy, requiring the use of a particulate respirator (N95/EU FFP2).



Step 1

- Identify hazards and manage risk
- Gather the necessary PPE
- Plan where to put on and take off PPE
- Do you have a buddy? Mirror?
- Do you know how you will deal with waste?



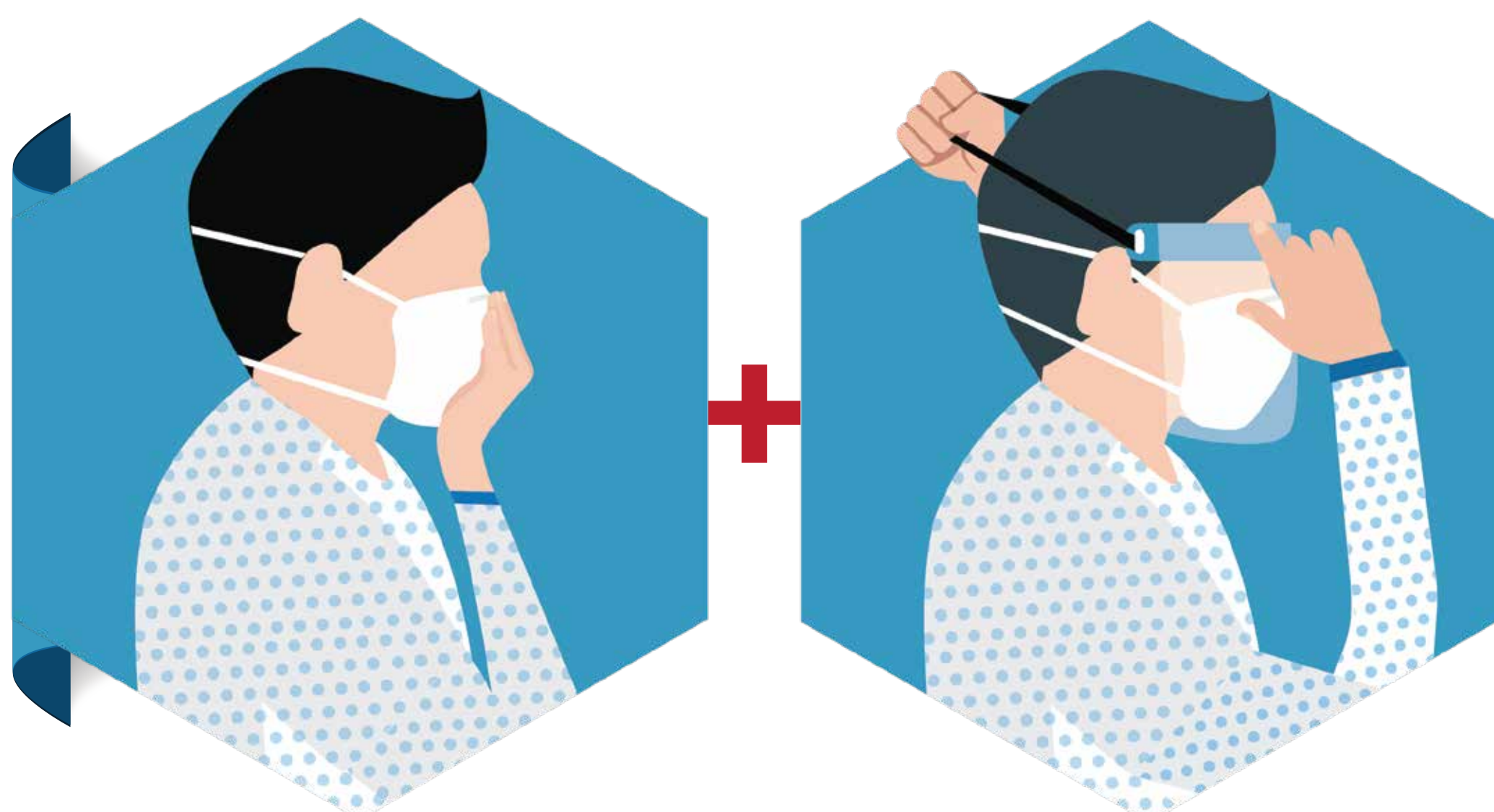
Step 2

Perform hand hygiene using soap and water (40-60 seconds) or alcohol based hand rub (20-30 seconds)



Step 3

Put on a gown



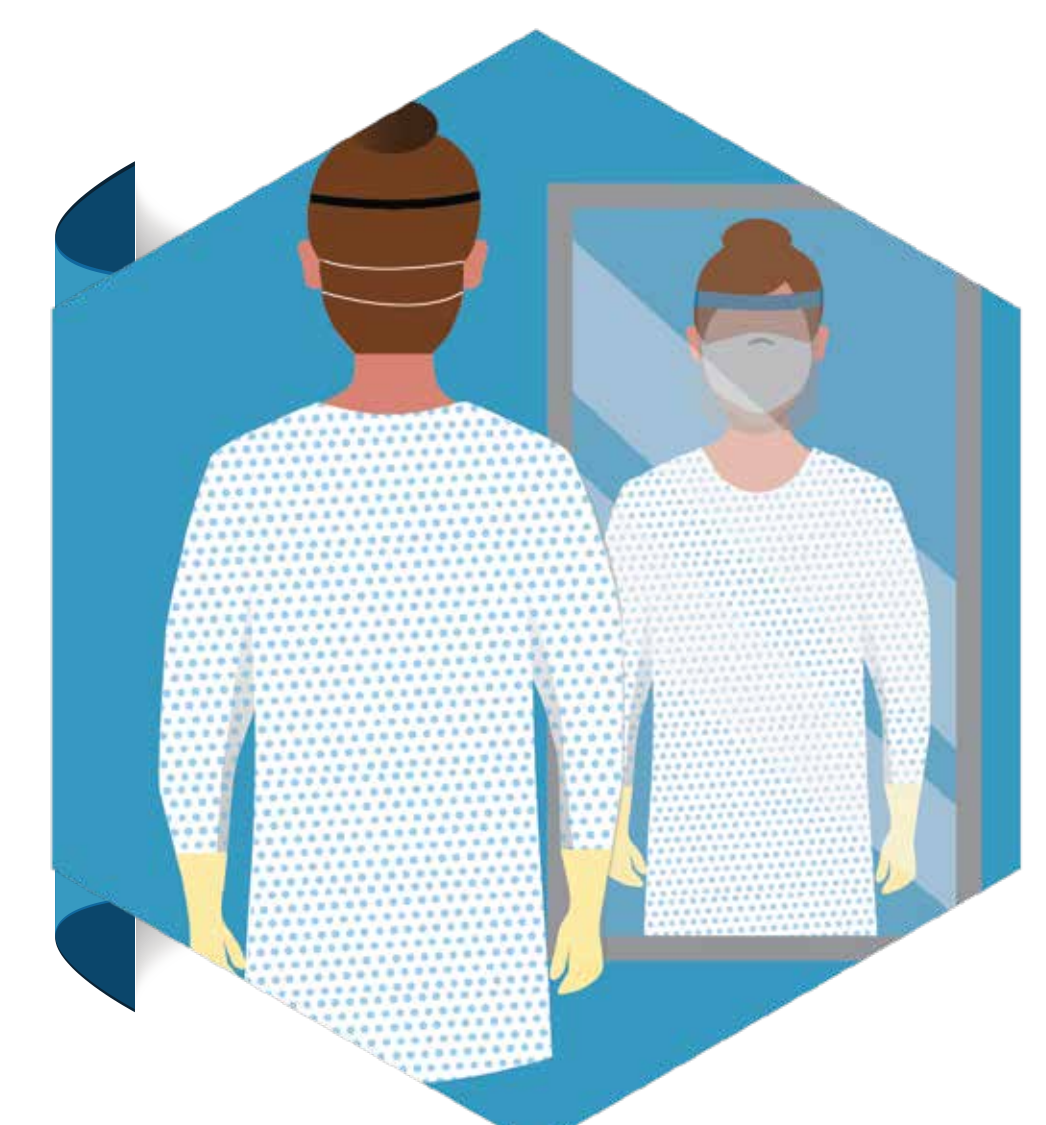
Step 4

Put on respirator mask and eye protection (e.g. face shield or goggles)



Step 5

Put on gloves over gown cuff.



Step 6

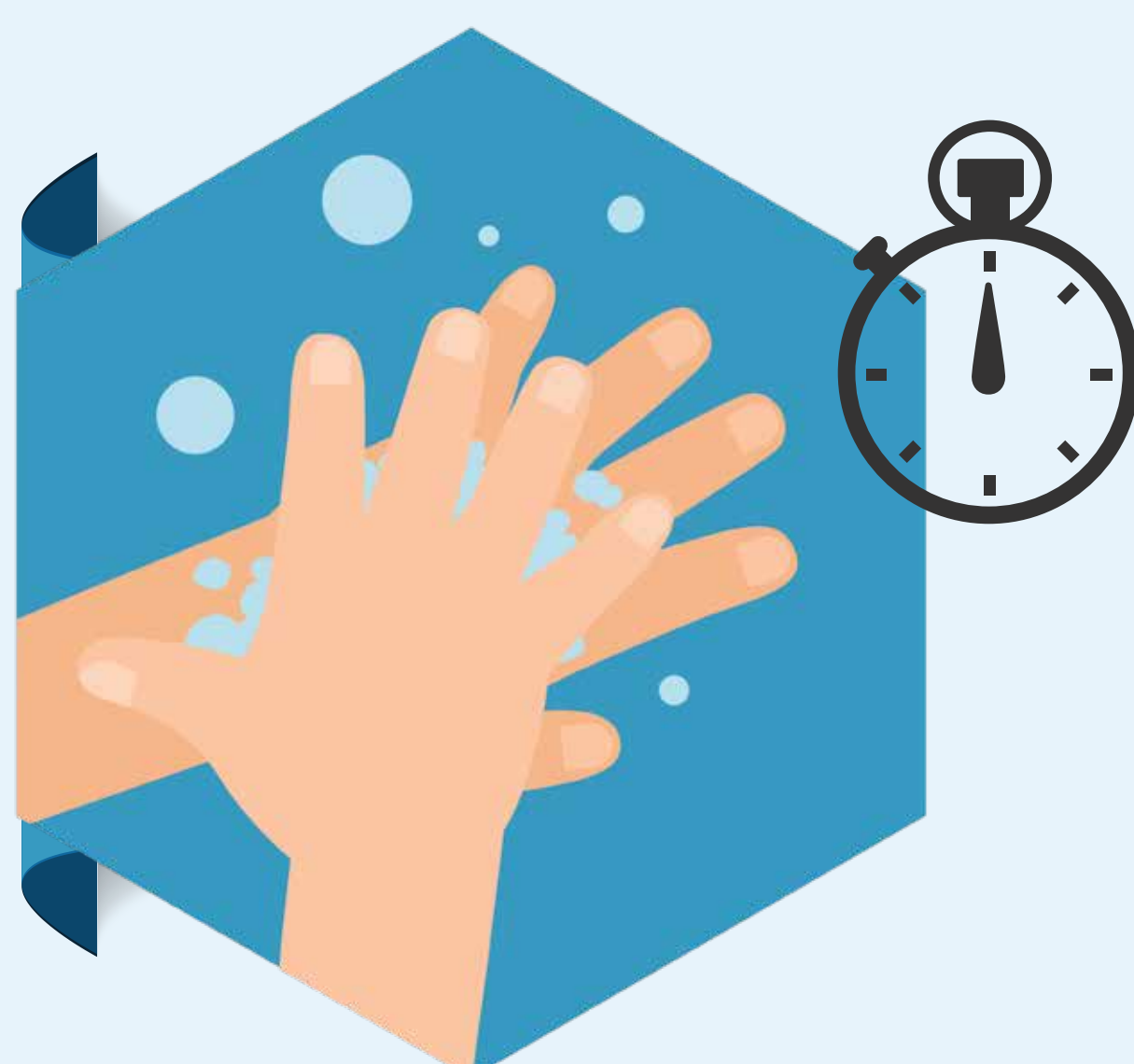
Visually check yourself in mirror or with buddy

How to remove PPE



Step 1

Remove gloves



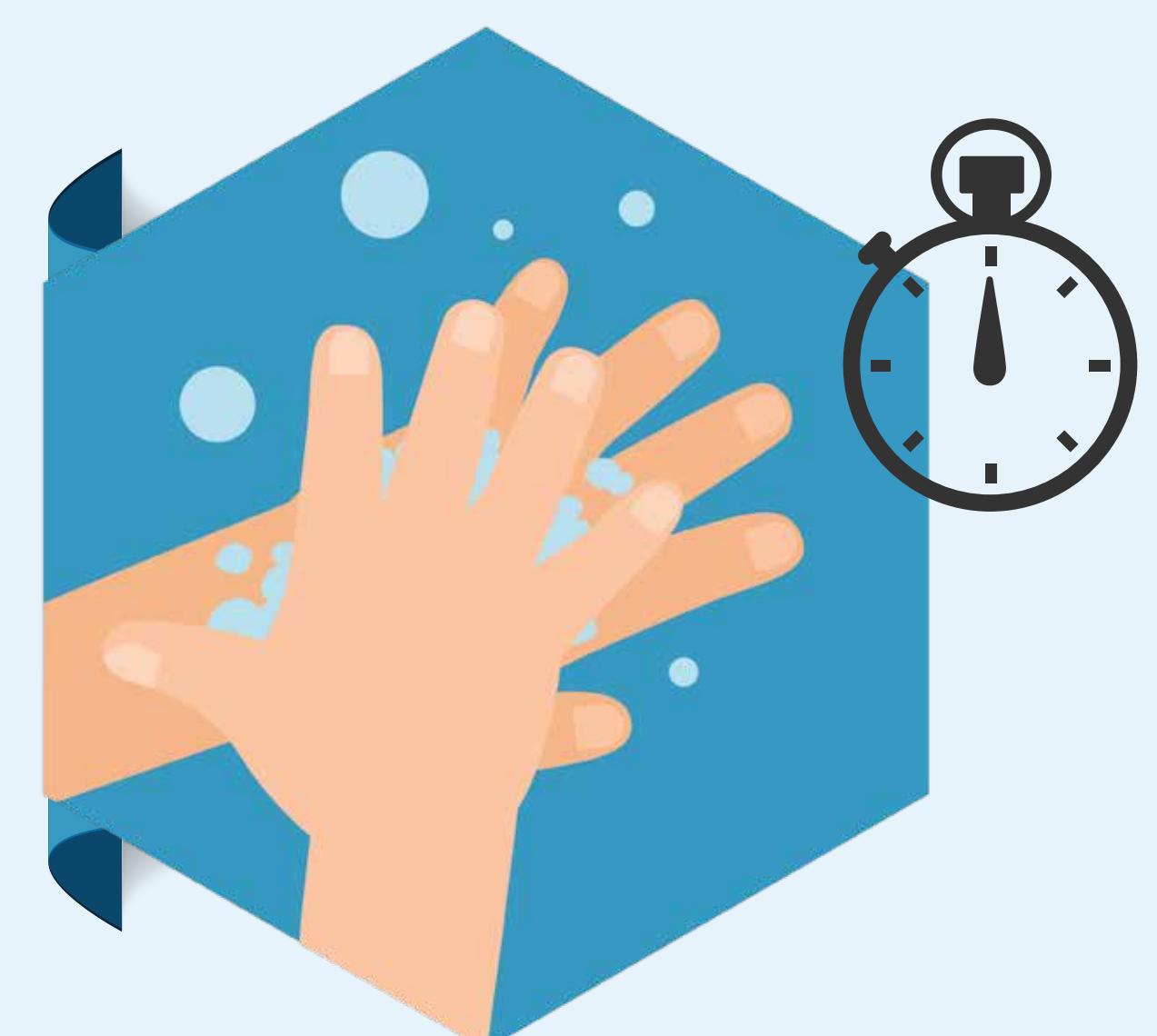
Step 2

Perform hand hygiene using soap and water (40-60 seconds) or alcohol based hand rub (20-30 seconds)



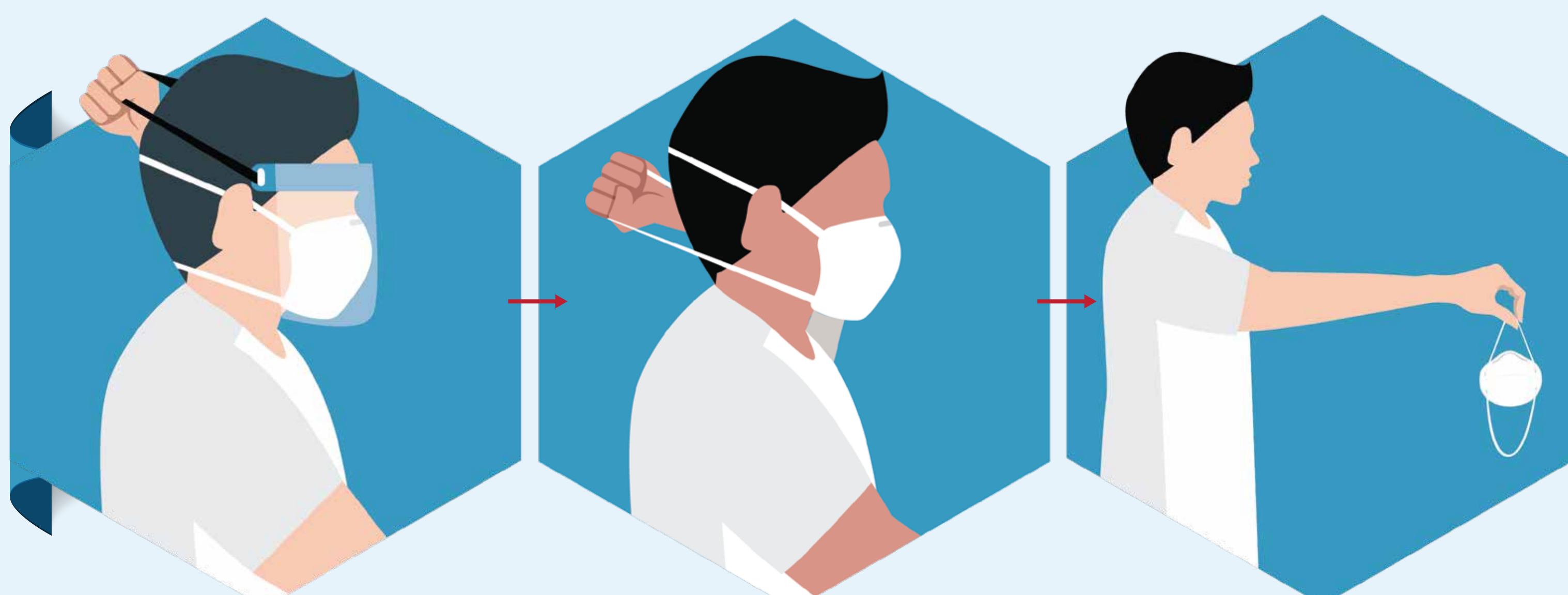
Step 3

- Peel off gown roll inside, out
- Dispose gloves and gown safely



Step 4

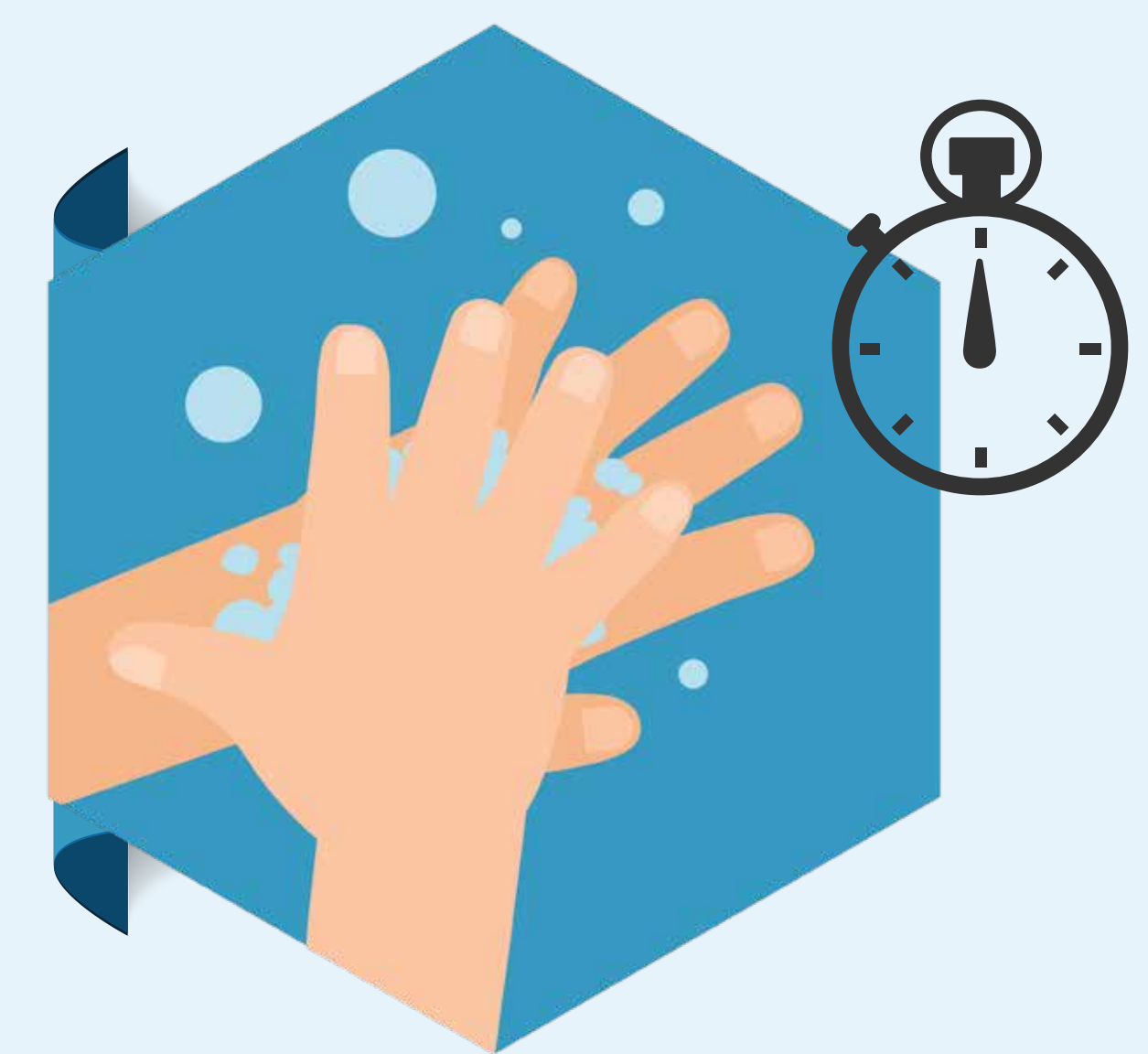
Perform hand hygiene using soap and water (40-60 seconds) or alcohol based hand rub (20-30 seconds)



Step 5

If wearing eye protection and mask:

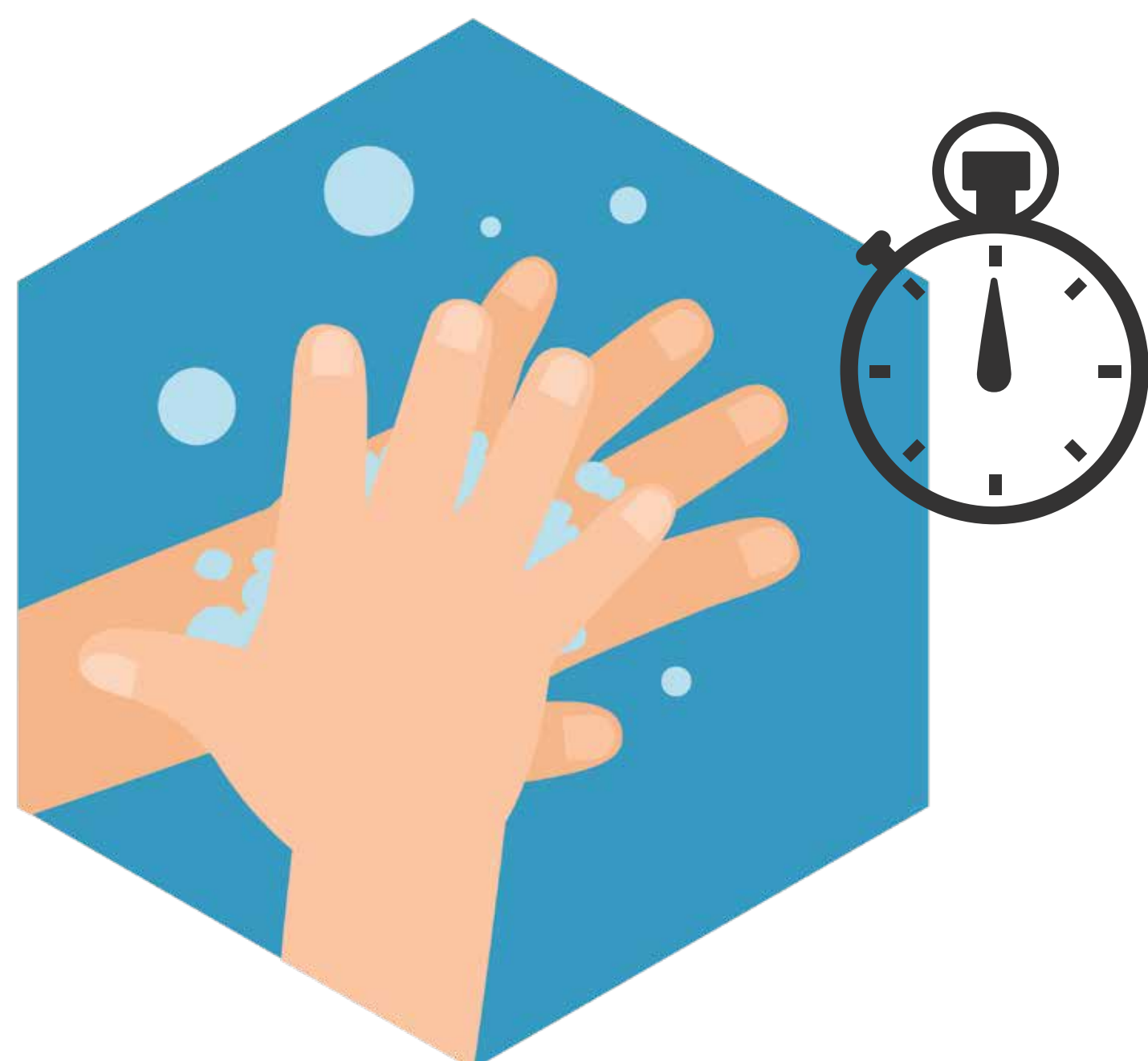
- Remove eye protection from behind
- Put eye protection in a separate container for reprocessing
- Remove mask from behind
- Remove lower strap first, then the upper
- Move mask away from face
- Do not touch front of mask
- Do not allow the contaminated mask to touch any surface
- Dispose of mask safely



Step 6

Perform hand hygiene using soap and water (40-60 seconds) or alcohol based hand rub (20-30 seconds)

How to perform a particulate respirator seal check



Step 1

Perform hand hygiene using soap and water (40-60 seconds) or alcohol based hand rub (20-30 seconds)



Step 2

Cup the respirator in your hand with the nosepiece at your fingertips allowing the headbands to hang freely below your hand



Step 3

Position the respirator under your chin with the nosepiece up



Step 4

Pull the top strap over your head resting it high at the back of your head.
Pull the bottom strap over your head and position it around the neck below the ears



Step 5

Place fingertips of both hands at the top of the metal nosepiece. Mold the nosepiece, using the fingers of each hand, to the shape of your nose. Pinching the nosepiece using only one hand may result in less effective respirator performance



Step 6

Cover the front of the respirator with both hands, being careful not to disturb the position of the respirator

Step 6a. Positive seal check

Exhale sharply. A positive pressure inside the respirator = no leakage.
If leakage, adjust the position and/or tension straps

Step 6b. Negative seal check

- Inhale deeply. If no leakage, negative pressure will make respirator cling to your face
- Leakage will result in loss of negative pressure in the respirator due to air entering through gaps in the seal