

One Talk W78B DECT IP base station quick start guide

onetalk.com

verizon.com/support/one-talk/



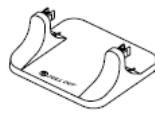
Package contents



W78B base station



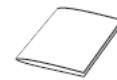
Power adapter



Base stand



Ethernet cable



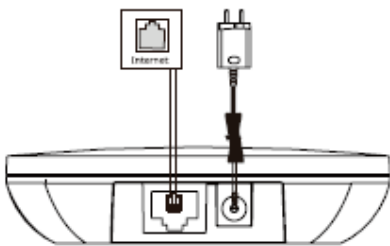
Quick start guide

Note: We recommend that you use the accessories provided or approved by Yealink. The use of unapproved third-party accessories may result in reduced performance.

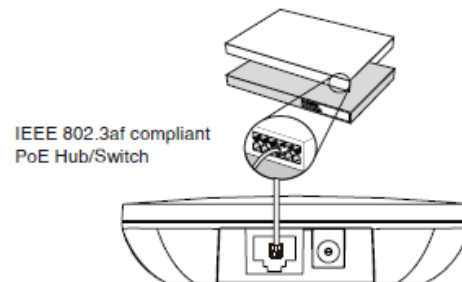
Assembling the DECT IP station

1. Connect the base station power and the network using method a or b.

a. AC power option



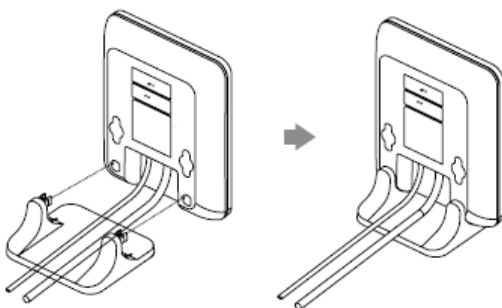
b. PoE (Power over Ethernet) option



Note:

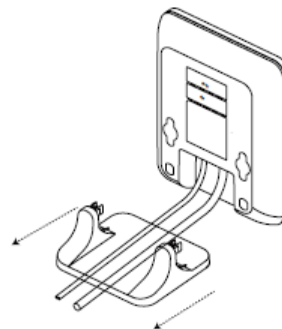
- If you choose method a, use Verizon supplied power adapter (5V/0.6A). A third-party power adapter may damage the base station
- If you choose method b, you do not need to connect the power adapter. Make sure the hub/switch is Power over Ethernet (PoE) compliant2a. (Desktop Installation) Attach and remove the base stand.

Attach the base stand

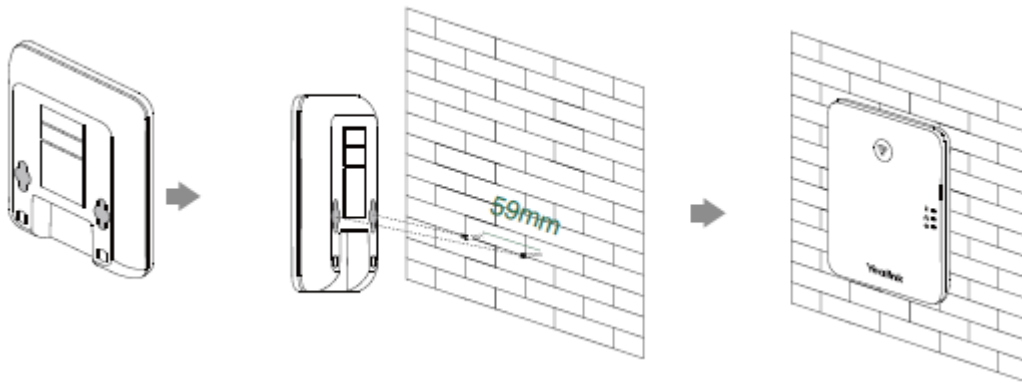


Align the snap-fits with the corresponding holes and push forward, snapping them into the holes.

Remove the base stand



Remove the snap-fits from the holes horizontally.

2b. (Wall-mount installation) Attach the base station.**Getting started****Handset Registration**

You can register up to 5 handsets (W78HV) to one W78B base station. Each handset can be registered to 2 different base stations.

When the handset LCD screen prompts “Unregistered!”, long press on the base station till the registration LED indicator flashes.

There are two methods to register a new handset:**Easy Registration**

1. Press the Reg soft key on the handset to register quickly.

Normal Registration

1. Press the OK soft key on the handset, and then select Register Handset.
2. Select the desired base station and then press the OK soft key. The handset begins searching the base station.
3. Press the OK soft key after searching a base station successfully.
4. Enter the base station PIN (default: 0000), and then press the Done soft key to complete the registration.

To register to multiple base stations, press OK to enter the main menu, and select Settings->Registration->Register Handset, then repeat steps 2-4.

Note:

- If the handset is registered to the base station successfully, the handset LCD screen prompts “Handset Subscribed” and “Base NO”. (the last 4 characters indicate the base station’s MAC address)
- If the handset LCD screen prompts “Searching for Base”, check that your base station is powered on

Notices

The specifications and information regarding the products in this guide are subject to change without notice. All statements, information and recommendations in this guide are believed to be accurate and presented without warranty of any kind, express or implied. Users must take full responsibility for their application of products.

Operating ambient temperatures

- Operating temperature: +14 to 122°F (-10 to 50°C)
- Relative humidity: 5% to 90%, noncondensing
- Storage temperature: -22 to +160°F (-30 to +70°C)

Technical support

For additional support information please visit the One Talk support site (verizonwireless.com/support/one-talk/) for the latest guides, FAQs, product documents and more.

Important customer information

To avoid electric shock, use caution when connecting cables. For example, do not connect safety extra-low voltage (SELV) circuits to telephone-network voltage (TNV) circuits. LAN ports contain SELV circuits, and WAN ports contain TNV circuits. Some LAN and WAN ports both use RJ-45 connectors.

To avoid electric shock, do not operate the product or connect or disconnect cables during electrical storms. To avoid electric shock, do not use this product in or near water.

To reduce the risk of fire or overheating, keep this product in well-ventilated areas, away from radiators or other heat sources. Do not block cooling vents.

The plug-socket combination must be accessible at all times because it serves as the main power-disconnecting device.

Use only the manufacturer-provided AC adaptor approved for use with this product. Use of another AC adaptor may cause a fire or explosion.

This product relies on short-circuit (overcurrent) protection installed in your home or office. Ensure that a fuse or circuit breaker no larger than 120 VAC, 15 A U.S. is used on the phase conductors (all current carrying conductors).

Unplug this product from the wall outlet and refer servicing to qualified service personnel under the following conditions:

1. When the power cord or plug is damaged or frayed.
2. If liquid has been spilled into the product.
3. If the product has been exposed to rain or water.
4. If the product does not operate normally when the operating instructions are followed. Adjust only those controls that are covered by the operating instructions, since improper adjustment of other controls may result in damage and will often require extensive work by a qualified technician to restore the product to normal condition.

WEEE warning



To avoid the potential effects on the environment and human health as a result of the presence of hazardous substances in electrical and electronic equipment, end users of electrical and electronic equipment should understand the meaning of the crossed-out wheeled bin symbol. Do not dispose of waste electrical and electronic equipment (WEEE) as unsorted municipal waste and collect such WEEE separately.

Warranty

The specifications and information regarding the products in this guide are subject to change without notice. All statements, information, and recommendations in this guide are believed to be accurate and presented without warranty of any kind, express or implied. Users must take full responsibility for their application of products.

Yealink Network Technology CO., LTD., makes no warranty of any kind with regard to this guide, including, but not limited to, the implied warranties of merchantability and fitness for a particular purpose. Yealink Network Technology CO., LTD., shall not be liable for errors contained herein nor for incidental or consequential damages in connection with the furnishing, performance, or use of this guide.

Important 911 emergency response information

If you call 911, emergency service responders will be sent to the registered location you provided when you ordered the phone. An incorrect address could result in incorrect routing of 911 calls and dispatch of emergency personnel to the wrong location, so please contact your administrator if your registered location is not accurate so that he can make the proper updates in the One Talk portal within My Business.

Data and voice functionality (including the ability to make and receive 911 calls) will not be available during a power outage, broadband connection failure or other service disruption. Neither Verizon Wireless nor any of its affiliates shall be liable for any service outage and/or inability to access emergency service personnel, nor shall Verizon Wireless or any of its affiliates be responsible for the acts or omissions of emergency response center personnel.

Declaration of conformity



Hereby, Yealink Network Technology CO., LTD., declares that this phone is in conformity with the essential requirements and other relevant provisions of Federal Communications Commission (FCC). You can find the FCC information from the label on the back of the IP phone.

Part 15 FCC rules

Any changes or modifications not expressly approved by the party responsible for compliance could void the user's authority to operate the equipment.

This device is compliant with Part 15 of the FCC Rules. Operation is subject to the following two conditions:

1. This device may not cause harmful interference.
2. This device must accept any interference received, including interference that may cause undesired operation.

Class B digital device or peripheral

Note: This equipment has been tested and found to comply with the limits for a Class B digital device, pursuant to Part 15 of the FCC Rules. These limits are designed to provide reasonable protection against harmful interference in a residential installation. This equipment generates, uses and can radiate radio frequency energy and, if not installed and used in accordance with the instructions, may cause harmful interference to radio communications. However, there is no guarantee that interference will not occur in a particular installation. If this equipment does cause harmful interference to radio or television reception, which can be determined by turning the equipment off and on, the user is encouraged to try to correct the interference by one or more of the following measures:

1. Reorient or relocate the receiving antenna.
2. Increase the separation between the equipment and receiver.
3. Connect the equipment into an outlet on a circuit different from that to which the receiver is connected.
4. Consult the dealer or an experienced radio/TV technician for help.

Important safety precautions

Please read the following important safety notices and instructions before installing or using the product.

- A DANGER warning refers to situations that could cause bodily injury
 - A CAUTION warning refers to situations that could result in equipment malfunction or damage
1. Follow all warnings and instructions marked on the product.
 2. Unplug this product from the wall outlet before cleaning. Do not use liquid cleaners or aerosol cleaners. Use an antistatic cleaning pad for cleaning.
 3. Do not use this product near water.
 4. Do not place this product on an unstable cart, stand or table. If the product falls, it could be seriously damaged.
 5. This product should be operated using the type of power indicated on the marking label. If you are not sure of the type of power available, consult your dealer or local power company.
 6. Do not allow anything to rest on the power cord. Do not locate this product where people will walk on the cord.
 7. Never push objects of any kind into this product through cabinet slots as they may touch dangerous voltage points or short out parts that could result in a fire or electric shock.
 8. Never spill liquid of any kind into or onto the product.
 9. Do not attempt to service this product yourself, as opening or removing covers may expose you to dangerous voltage points or other risks.
 10. Refer all questions regarding servicing of this product to qualified service personnel.

Danger—electric shock and fire

Electric current from power, telephone and communication cables is hazardous and could result in electric shock and/or fire.

Learn more

For more information, visit www.onetalk.com