

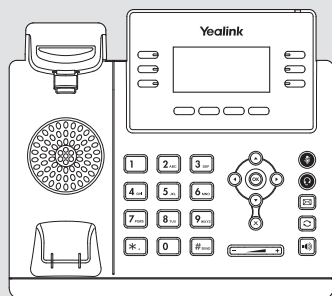
Quick Install Guide

verizon^v

One TalkSM T41P IP Desk Phone, Basic

www.verizonwireless.com/Support/One-Talk/

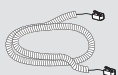
Packaging contents



T41 Desk Phone



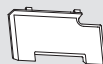
T41
Handset



Handset cord



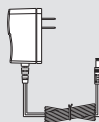
Ethernet cable



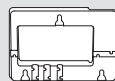
T41 Stand



Quick Install Guide
Quick Reference Guide



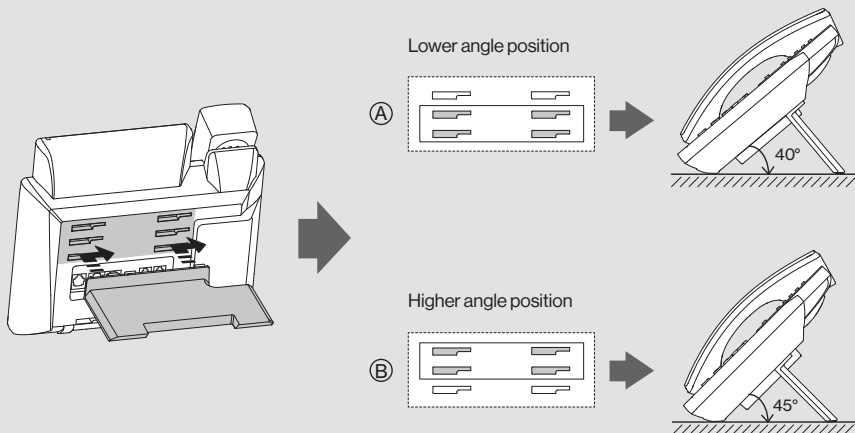
T41 Power adapter



T41 Wall
mount bracket
(not included)

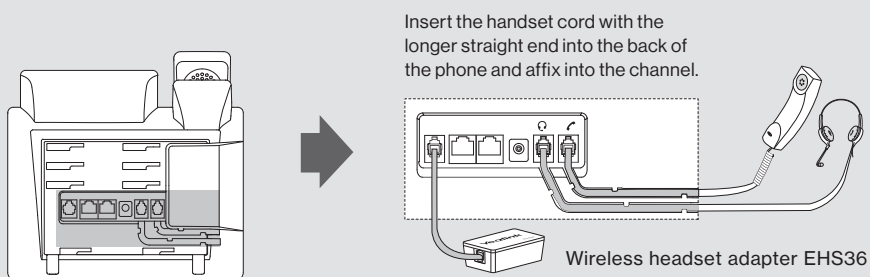
Assembling the phone

1. Attach the stand.



Note: You can also mount the phone to a wall. Purchase of the optional T41P Wall mount bracket is required.

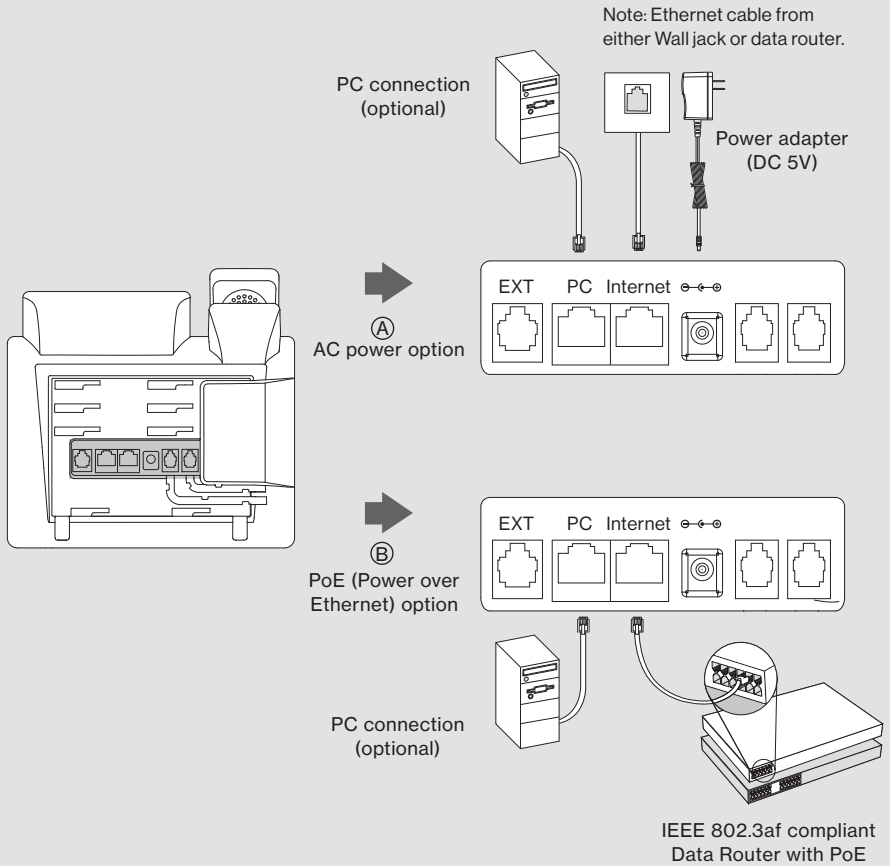
2. Connect the handset and optional headset.



Note: The headset and wireless headset adapter EHS36 must be purchased separately. EHS36 is used for connecting the phone and a compatible wireless headset. For more information on how to use the EHS36, www.verizonwireless.com/Support/One-Talk/.

3. Connect power.

You have two options for power connections. Your system administrator will advise you on which one to use.



Note: If inline power (PoE) is provided, you don't need to connect the power adapter. Make sure the hub/switch is PoE-compliant.

Startup

After the One Talk phone is connected to the network and supplied with power, it automatically begins the initialization process. After startup, and confirming the 911 address, the phone is ready for use.

Welcome
Initializing... Please wait

Note: Check with your system administrator if any error appears during the registration process or if a specific configuration is required for your registration.