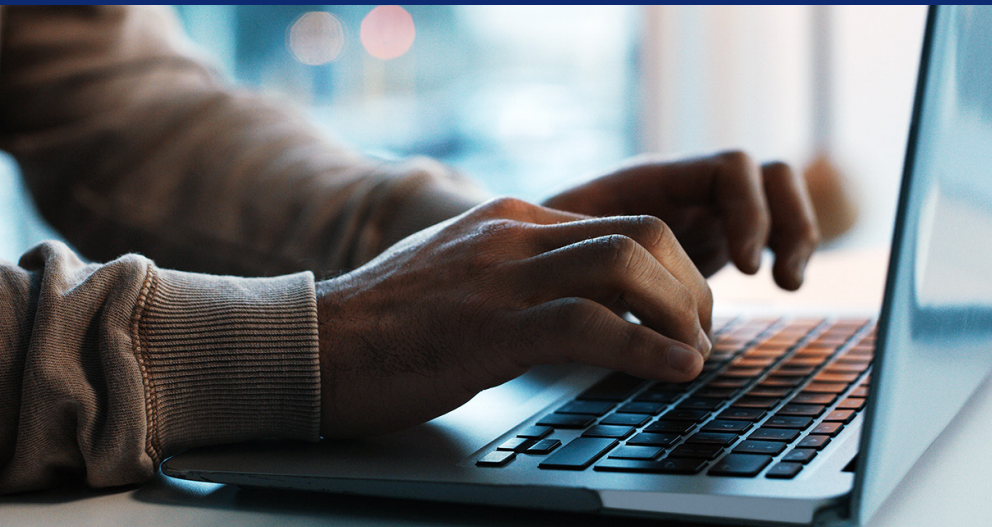
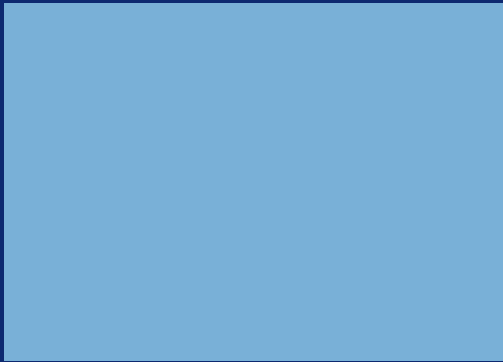


Annual Report of Non-Financial Data

For the Year Ended August 31, 2023



ANNUAL REPORT OF NON-FINANCIAL DATA

UNAUDITED

TEXAS WORKFORCE COMMISSION
Austin, Texas

Year Ended August 31, 2023

Texas Workforce Commission

A Member of Texas Workforce Solutions

Bryan Daniel, Chairman
Commissioner Representing
the Public

Alberto Treviño III
Commissioner Representing
Labor

Joe Esparza
Commissioner Representing
Employers

Edward Serna
Executive Director

December 21, 2023

The Honorable Greg Abbott, Governor
The Honorable Glenn Hegar, State Comptroller
Mr. Jerry McGinty, Director, Legislative Budget Board
Ms. Lisa R. Collier, CPA, State Auditor

Ladies and Gentlemen:

We are pleased to submit the Texas Workforce Commission's Annual Report of Non-Financial Data for the year ended August 31, 2023, in compliance with the TEX. GOV'T CODE ANN. §2101.0115 and in accordance with the instructions for completing the Annual Report of Non-Financial Data.

The accompanying report has not been audited and is independent of the agency's Annual Financial Report.

If you have any questions, please contact Chris Nelson, Chief Financial Officer, at (512) 463-1829.

Sincerely,



Edward Serna
Executive Director

TABLE OF CONTENTS

	Page Number
Agency Transmittal Letter	
Schedule of Space Occupied	1
Schedule of Professional/Consulting Fees and Legal Service Fees	7
Schedule of Itemized Purchases	9
HUB Strategic Plan Progress Report	12
Appropriation Item Transfer Schedule	13
Indirect Cost Schedule	18
Schedule of Recycled, Remanufactured, and Environmentally Sensitive Purchases	20
Schedule of State-Owned or Leased Vehicles Used by State Employees	21
Schedule of Vehicles Purchased	24

SCHEDULE OF SPACE OCCUPIED

For the Fiscal Year Ended August 31, 2023

Location	Street Address	Lessor
Agency-Owned Buildings:		
Amarillo	1206 W 7th Ave	
Austin	101 E 15th St	
Austin	1117 Trinity St	
Austin	1215 Guadalupe St	
Austin	12312 N Mo Pac Expy	
Austin	1411 Brazos St	
Austin	2810 E Martin Luther King Jr Blvd	
Austin	4800 N Lamar (Criss Cole Rehabilitation Ctr.)	
Brownsville	851 Old Alice Rd	
Brownwood	2202 Highway 377 S	
Corpus Christi	520 N Staples St	
Corsicana	720 N Beaton St	
Fort Worth	301 W 13th St	
Garland	217 N 10th St	
Harlingen	601 E Harrison St	
Marshall	4300 E End Blvd, S	
McAllen	400 E Hackberry Ave	
McKinney	1713 W Louisiana St	
Paris	5210 SE Loop 286	
San Antonio	330 Dwyer Ave	
Waxahachie	1712 W 287 Business	

State-Owned Space:

Austin	4800 N. Lamar Blvd. (Administrative Bldg.)	
--------	--	--

Leased Space:

Abilene	500 Chestnut St, Suite 1425	Abilene Tower LLC
Amarillo	2505 Lakeview Dr, Ste 300	Colonnade At Polo Park Venture
Arlington	110 W Randol Mill Rd, Suite 110	Randol Oaks, LTD
Arlington Appeals	524 E. Lamar Blvd, Suite 350	FN 524 Lamar, LLC
Arlington	1301 S Bown Rd., Ste. 150	Bowen Road Investments, LLC
Austin	1201 San Jacinto Blvd	State Preservation Board
Austin	4405 Springdale Rd, Suites A, B & C	Richard Fink
Austin	6400 Hwy 290 East, Suite 200 (Bldg 2)	We are blood
Beaumont	2615 Calder St, Ste 650	Beaumont Tower Venture, LTD
Brownwood	909 Main St	Lantec Investment Group, LLC
Bryan	3608 East 29th Street, Suite 214	KFF Ventures
Carrollton	1735 Keller Springs Rd, Suite 150	Buckeye Capital Investments, LLC
Corpus Tax	2037 Airline Rd, Suite 200	Kleburg Bank, N.A
Corpus Christi	4410 Dillon Ln, Suite 44	Commerce II Business Park, LLC
Crockett	1046 S 4th St	Stanley C. Maxwell
Dallas	3650 N Buckner Blvd, Suite 102	Leverage 3650 Buckner, LP
El Paso	1359 Lomaland Suite 300	Lomaland Center, LLC
Fort Worth	3320 Phoenix Dr	Kent Perkins Capital, Inc

Type	Usable Square Feet	TWC FTE's	Rental per Month		Actual Annual Cost	Comments
			Cost per Square Foot	Cost per Month		
Occupied	15,500	1.0				Workforce Center
Occupied	171,399	772.0				TWC Administrative Headquarters
Occupied	101,250	454.0				TWC Administrative Offices
Occupied	10,878	38.0				TWC Administrative Offices
Occupied	9,000	14.0				UI Tax & Appeals
Occupied	68,499	368.0				TWC Administrative Offices
Occupied	32,000	9.0				Inventory storage
Occupied	95,900	92.0				Rehabilitation Training Center
Occupied	17,244	14.0				Workforce Center
Occupied	4,000	4.0				Workforce Center
Occupied	22,616	28.0				Workforce Center
Occupied	5,280	5.0				Workforce Center
Occupied	64,470	233.0				Tele-Center
Occupied	7,546	3.0				Workforce Center
Occupied	8,160	9.0				Workforce Center
Occupied	8,327	6.0				Workforce Center
Occupied	30,546	231.5				Tele-Center
Occupied	4,410	21.0				UI Tax Office
Occupied	6,704	5.0				Workforce Center
Occupied	19,516	3.0				Tele-Center
Occupied	7,107	10.0				Workforce Center
	<u>710,352</u>	<u>2,320.5</u>				
Office	<u>34,688</u>	<u>100.0</u>				State Office North Lamar
	<u>34,688</u>	<u>100.0</u>				
Office	1,217	24.0	1.17	1,419.83	17,037.96	Tax / Appeals
Office	2,674	12.5	0.90	2,400.00	28,800.00	Tax
Office	5,412	15.0	1.15	6,201.25	74,415.00	Vocational Rehabilitation
Office	6,281	14.0	2.05	12,860.75	64,303.75	Tax / Appeals
Office	5,001	29.0	1.68	8,401.77	99,164.97	Vocational Rehabilitation
Parking	N/A	N/A	N/A	850.00	10,200.00	10 parking spaces
Office	43,920	26.0	0.97	42,644.00	511,728.00	Print Shop/Graphics/Records/Mail
Office	5,065	23.0	1.41	7,120.42	85,445.04	Vocational Rehabilitation
Office	2,104	5.0	1.86	3,920.40	47,044.80	Tax / Appeals / UI Support
Office	2,391	1.0	1.88	4,497.34	53,968.08	Tax
Office	1,225	4.0	1.55	1,900.00	22,800.00	Tax
Office	1,300	5.0	1.37	1,775.90	19,534.90	Vocational Rehabilitation
Office	2,918	12.0	1.58	4,620.17	13,860.51	Tax
Office	5,360	14.5	1.09	5,862.34	70,348.08	Vocational Rehabilitation
Office	1,340	3.0	0.71	950.00	11,400.00	Vocational Rehabilitation
Office	5,633	20.0	0.92	5,199.76	62,397.12	Vocational Rehabilitation
Office	20,500	168.5	2.15	43,994.66	527,935.92	UI Call Center
Office	5,364	22.0	1.47	7,889.81	94,677.72	Vocational Rehabilitation

SCHEDULE OF SPACE OCCUPIED

For the Fiscal Year Ended August 31, 2023

Location	Street Address	Lessor
Fort Worth	2400 Circle Dr, Suite 200	Tarrant County
Galveston	4700 Broadway St, Ste. E100	Galveston Housing Authority
Garland	1919 S Shiloh, Suite 420	Leis O'Hana Hui Family Partnership, LTD
Gatesville	104 Lutterloh	Mary Anzalone
Houston	18333 Egret Bay Blvd, Suite 590	Fullerton Egret Bay Houston, LLC
Houston	2636 South Loop W, Suite 525	SLS-South Loop, LLC
Houston	3555 Timmons Ln, Ste. 790	Houston-Galveston Area Council
Houston	8866 Gulf Freeway, Suite 225	Gulf Towers Houston, LLC
Houston	3311 Richmond Ave, Suite 175	Thomas Wertheim
Houston	2900 Woodridge, Ste. 260	SLS-Houston Properties LLC
Jacksonville	502 E Pine	Berry & Clay Properties, LLC
Laredo	709 E Calton Rd, Ste 108	JABE Ventures, LTD
Lewisville	2600 MacArthur Blvd, Ste. 101-102	SentientView Solutions, LLC
Longview	1125 Judson Rd, Ste 133	Robledo Investments, LTD
Longview	2124 Alpine St	Jose C. Juarez
Lubbock	4611 50th St	Farrokh N. Rad dba Franz Rad
Pampa	1712 N Hobart	TABAT Properties, LTD
Pasadena	4111 Fairmont Pkwy, Suite 104-A	John O. Harris Ventures, L.P.
Plano	520 E Central Pkwy, Suite 232	Haggard Enterprises, LTD
San Angelo	4241 Southwest Blvd., Ste 105	Rosebriar Sunset Mall, L.P.
San Antonio	4801 NW Loop 410, Ste 725	MASEHO, Inc.
San Antonio	4801 NW Loop 410, Ste 950	MASEHO, Inc.
San Antonio	4241 Woodcock Dr, Suite A105	Brass Centerview 11 LLC
San Antonio	10303 Nacogdoches	J. Allen Family Partners, LTD
Texarkana	2409 Moores Ln	Lyons Creek, LLC
Tyler	909 ESE Loop 323, Ste 640	Mesa Loan Company of Athens, LP
Tyler	3800 Paluxy Dr, Suites 320	Genecov Investments, LTD
Tyler	3800 Paluxy Dr, Suite 575	Genecov Investments, LTD
Wichita Falls	3709 Gregory St, Suite 102	Sherwood Oaks Shopping Center, LP

Type	Usable Square Feet	TWC FTE's	Rental per Month		Actual Annual Cost	Comments
			Cost per Square Foot	Cost per Month		
Office	14,328	36.0	1.11	15,880.20	190,562.40	Vocational Rehabilitation
Office	2,301	4.0	1.68	3,876.00	46,512.00	Vocational Rehabilitation
Office	4,615	15.0	1.09	5,041.43	60,497.16	Vocational Rehabilitation
Office	1,800	2.0	2.08	3,741.46	44,897.52	Vocational Rehabilitation
Office	1,635	7.0	1.44	2,354.40	28,252.80	Vocational Rehabilitation
Office	3,597	9.0	1.54	5,534.88	66,418.56	Vocational Rehabilitation
Office	5,578	54.0	2.23	12,434.29	149,211.48	Vocational Rehabilitation
Office	1,930	5.0	1.38	2,653.75	31,845.00	Vocational Rehabilitation
Office	5,830	15.0	2.56	14,904.51	178,854.12	Vocational Rehabilitation
Office	3,052	2.0	2.46	7,502.83	7,502.83	Vocational Rehabilitation
Office	865	2.0	1.40	1,212.00	14,544.00	Vocational Rehabilitation
Office	1,377	3.0	2.16	2,974.00	35,688.00	Tax
Office	2,814	7.0	2.46	6,917.75	13,835.50	Vocational Rehabilitation
Office	1,593	15.0	1.19	1,900.00	22,800.00	Tax
Office	4,185	18.0	1.27	5,294.33	62,097.99	Vocational Rehabilitation
Office	2,512	9.0	1.27	3,200.00	38,400.00	Tax
Office	1,215	3.0	1.83	2,227.67	26,732.04	Vocational Rehabilitation
Office	4,500	14.0	0.86	3,860.00	46,320.00	Vocational Rehabilitation
Office	5,571	19.0	1.25	6,961.07	83,532.84	Vocational Rehabilitation
Office	968	2.0	1.46	1,410.00	16,920.00	Tax
Office	7,212	62.0	2.44	17,566.36	210,796.32	Tax / Appeals
Office	9,656	75.0	2.59	25,007.87	300,094.44	UI Call Center
Office	13,043	40.0	1.45	18,858.00	226,296.00	Vocational Rehabilitation
Office	4,907	22.0	1.83	8,983.33	107,799.96	Vocational Rehabilitation
Office	1,050	2.0	1.24	1,300.00	15,600.00	Tax
Office	1,460	6.0	1.65	2,414.84	28,978.08	Tax
Office	7,828	26.0	1.87	14,611.74	175,340.88	Vocational Rehabilitation
Office	5,091	17.0	1.46	7,451.81	89,421.72	Vocational Rehabilitation
Office	2,671	10.0	1.10	2,926.09	14,630.45	Vocational Rehabilitation
	<u>240,889</u>	<u>899.5</u>		<u>\$ 371,509.01</u>	<u>\$ 4,149,443.94</u>	

SCHEDULE OF SPACE OCCUPIED

For the Fiscal Year Ended August 31, 2023

Location	Street Address	Lessor
Free Space:		
Austin	1102 S. Congress (TX School for the Deaf)	
El Paso	401 E Franklin Ave, Ste. 240	Texas Facilities Commission
San Marcos	601 University Dr. (TX State University)	
Waco	3801 Campus Drive (Waco TSTC)	

The Agency's efforts are directed toward full compliance with Texas Government Code, Title 10, Section 2165.104(c), and conformity with Rules promulgated by the Texas Facilities Commission. As of August 31, 2023, TWC staff occupied 21 Agency Owned Buildings and 47 leased facilities. Grants to Local Workforce Development Boards (Boards) support the occupancy of agency staff co-located in Board-managed Texas Workforce Centers throughout the state. Boards deliver program services in more than 170 Texas Workforce Solutions Offices.

Type	Usable Square Feet	TWC FTE's	Rental per Month		Actual Annual Cost	Comments
			Cost per Square Foot	Cost per Month		
Office	82	1.0				Vocational Rehabilitation
Office	6,551	25.0				Vocational Rehabilitation
Office	400	2.0				Vocational Rehabilitation
Office	2,026	1.0				Vocational Rehabilitation
	<u>9,059</u>	<u>29.0</u>				

**SCHEDULE OF PROFESSIONAL/CONSULTING FEES
AND LEGAL SERVICE FEES**

For the Fiscal Year Ended August 31, 2023

Vendor Name	Type of Service Rendered	Amount
Professional/Consulting Fees		
TEXAS DEPT OF INFORMATION RESOURCES	Computer Svcs-SW Tech Center	\$ 39,178,880.36
TEXAS HEALTH AND HUMAN SERVICES	Computer Programming Svcs	8,400,000.00
KINDERSYSTEMS INC	Computer Programming Svcs	3,676,735.00
GEOGRAPHIC SOLUTIONS INC	Computer Programming Svcs	2,234,612.00
UNISYS CORPORATION	Computer Programming Svcs	1,993,578.45
NIPUN SYSTEMS	Computer Programming Svcs	1,845,482.34
NEOS CONSULTING GROUP LLC	Computer Programming Svcs	1,663,084.05
TEXAS GOVLINK INC	Computer Programming Svcs	1,459,800.09
BANSAR TECHNOLOGIES INC	Computer Programming Svcs	1,244,146.16
ALLIED CONSULTANTS	Computer Programming Svcs	1,012,169.57
CONVERGEONE INC	Computer Programming Svcs	810,540.29
C & T CONSULTING SERVICES LLP	Computer Programming Svcs	806,598.27
THE UNIVERSITY OF TEXAS AT AUSTIN	Other Professional Services	760,913.71
C&T INFORMATION TECHNOLOGY CONSULTING	Computer Programming Svcs	719,840.79
ATHOMTECH INC	Computer Programming Svcs	672,850.20
STATE AUDITOR'S OFFICE	Financial And Accounting Serv	604,759.15
RAPISOURCE LLC	Computer Programming Svcs	577,978.00
ABACUS TECHNICAL SERVICES LLC	Computer Programming Svcs	576,191.36
LOBLOLLY CONSULTING LLC	Computer Programming Svcs	552,258.25
ELEMENTS OF ARCHITECTURE INC	Architectural/Engineering Serv	533,015.55
E-CONSULTING INC	Computer Programming Svcs	493,611.98
COOPER CONSULTING COMPANY	Computer Programming Svcs	483,331.00
FALKENBERG CONSTRUCTION CO INC	Architectural/Engineering Serv	459,568.94
RED SALSA TECHNOLOGIES INC	Computer Programming Svcs	458,937.03
CLOUD CONSULTING SERVICES INC	Computer Programming Svcs	440,295.56
INDOTRONIX INTERNATIONAL CORPORATION	Computer Programming Svcs	429,869.80
TEMPSET CONTROLS INC	Other Professional Services	407,758.86
INFOJINI INC	Computer Programming Svcs	357,122.96
TEXAS STATE UNIVERSITY-SAN MARCOS	Other Professional Services	343,829.86
INNOSOUL INC	Computer Programming Svcs	325,217.67
NATIONAL HUMAN RESOURCE GROUP INC	Computer Programming Svcs	300,769.20
PUBLIC CONSULTING GROUP	Other Professional Services	297,790.00
TEKSYSTEMS INC	Computer Programming Svcs	277,200.10
LUNA DATA SOLUTIONS INC	Computer Programming Svcs	257,796.46
TEXAS HEALTH AND HUMAN SERVICES	Other Professional Services	250,000.00
TEXAS A&M ENGINEERING EXTENSION SERVICE	Computer Programming Svcs	223,514.00
DATAMANUSA LLC	Computer Programming Svcs	220,200.00
COGENT INFOTECH CORPORATION	Computer Programming Svcs	208,268.50
CHANDRA TECHNOLOGIES INC	Computer Programming Svcs	197,000.00
FREEIT DATA SOLUTIONS INC	Computer Programming Svcs	155,555.16
WESTAT INC	Other Professional Services	148,318.29
UNIVERSITY OF NORTH TEXAS	Other Professional Services	142,211.35
GTS TECHNOLOGY SOLUTIONS INC	Computer Programming Svcs	140,622.72
RACHEL C ANDERSON	Other Professional Services	121,880.00
YESLMS LLC	Educational/Training Services	113,520.00
SHERRY MATTHEWS INC	Educational/Training Services	109,642.48
AT&T CORP	Computer Programming Svcs	105,390.40
ISF INC	Computer Programming Svcs	98,240.00
ALLIANCE WORK PARTNERS	Other Professional Services	91,650.58
THE CENTER FOR SOCIAL CAPITAL INC	Educational/Training Services	73,300.00
TEXAS A&M UNIVERSITY	Other Professional Services	73,115.15
UNIVERSITY OF ARKANSAS	Educational/Training Services	68,137.00
CARAHSOFT TECHNOLOGY CORPORATION	Computer Programming Svcs	62,504.82
CONNECTTEL INC	Computer Programming Svcs	58,520.00

**SCHEDULE OF PROFESSIONAL/CONSULTING FEES
AND LEGAL SERVICE FEES**

For the Fiscal Year Ended August 31, 2023

Vendor Name	Type of Service Rendered	Amount
Professional/Consulting Fees		
CATAPULT SYSTEMS LLC	Computer Programming Svcs	50,924.71
IBML	Data Processing Services	48,828.00
TEXAS COMPTROLLER OF PUBLIC ACCOUNTS	Educational/Training Services	44,134.97
RYAN MCCOLLUM	Educational/Training Services	35,533.50
CGI TECHNOLOGIES AND SOLUTIONS INC	Computer Programming Svcs	23,100.00
COTTEN/LANDRETH ARCHITECTS INC	Architectural/Engineering Serv	22,568.00
JEFF HENDERSON	Educational/Training Services	22,500.00
MANN LAW FIRM PLLC	Hearings Officers-Preapp-Ofcs	21,164.00
INTERNATIONAL DEVELOPMENT AND PLANNING	Educational/Training Services	17,690.00
UNIVERSITY OF MARYLAND COLLEGE PARK	Educational/Training Services	17,500.00
KEPPLER ASSOCIATES, INC	Educational/Training Services	17,500.00
COOPER CONSULTING COMPANY	Other Professional Services	17,304.00
INTERNATIONAL BUSINESS MACHINES	Computer Programming Svcs	16,200.00
LANGEVIN LEARNING SERVICES	Educational/Training Services	15,312.40
STANLEY CONSULTANTS INC	Architectural/Engineering Serv	12,750.00
CITIBANK N A	Educational/Training Services	11,464.96
JLL VALUATION & ADVISORY SERVICES LLC	Other Professional Services	11,400.00
ORACLE AMERICA INC	Educational/Training Services	10,567.42
AMERICAN INSTITUTES FOR RESEARCH IN THE	Other Professional Services	9,858.00
TEXAS COMPTROLLER OF PUBLIC ACCOUNTS	Data Processing Services	9,728.00
CRITICAL START INC	Educational/Training Services	9,600.00
HALFF ASSOCIATES INC	Architectural/Engineering Serv	9,350.74
SOCIETY FOR HUMAN RESOURCE MANAGEMENT	Educational/Training Services	7,115.00
WT APPRAISAL INC	Other Professional Services	6,500.00
ERC ENVIRONMENTAL & CONSTRUCTION	Architectural/Engineering Serv	5,650.00
THE UNIVERSITY OF TEXAS AT AUSTIN	Educational/Training Services	5,485.00
YORK CAREER DEVELOPMENT INC	Educational/Training Services	5,400.00
CUSTOMER RESEARCH INTERNATIONAL INC	Other Professional Services	5,246.00
PRESIDIO NETWORKED SOLUTIONS GROUP LLC	Computer Programming Svcs	5,127.31
70 other vendors under \$5,000.00		120,042.78
Total Professional/Consulting Fees		\$ 77,933,668.25
Legal Service Fees		
WINSTEAD PC	Legal Services	68,001.02
DOYLE & SEELBACH PLLC	Legal Services	27,031.00
Total Legal Service Fees		\$ 95,032.02
Total Professional/Consulting Fees and Legal Service Fees		\$ 78,028,700.27
<i>Reconciliation to Annual Financial Report (AFR):</i>		
<i>Total Professional/Consulting Fees and Legal Service Fees</i>		<i>\$ 78,028,700.27</i>
<i>Information Technology and Architectural/Engineering Services capitalized on the AFR</i>		<i>(6,710,064.88)</i>
		\$ 71,318,635.39

SCHEDULE OF ITEMIZED PURCHASES
For the Fiscal Year Ended August 31, 2023

<u>Vendor Name</u>	<u>PO Amount</u>	<u>Item Description</u>	<u>Justification</u>
Morrow Consulting LLC	\$99,999.00	SSA VR Claims Reimbursements	Proprietary Sole Source Approved. The potential contractor is the sole entity in the United States with the ability and knowledge to process and submit claims on behalf of Vocational Rehab (VR) for Texas. The Ticket Tracker VR was developed by Morrow Consulting LLC and the majority of VR agencies in the United States and its Territories use it to identify claims potentially eligible for SSA cost reimbursement.
SP Marketplace Holdings INC	\$12,495.00	SP Marketplace - CRM	Proprietary Sole Source Approved. This request was for the required upgrade and customization to the existing SP Marketplace Holdings Inc. software product. SP Marketplace Holdings Inc. has made several software upgrades to the product that needed to be installed and are compatible with SharePoint. The software upgrades enabled our office to expand the current security upgrades, product design, project task templates, and tracking project templates migration of CRM records, documents and reporting capabilities. The system allows for a more integrated staff portal to be expanded across the current structure. The upgrades were needed to enhance our business operations. This is not a new contract, this purchase is for upgrades to our existing software.
Inter-Con Security Systems INC	\$2,502.50	Inter-Con Security Services for Rosenberg Office January 2, 2023 - January 6, 2023	No competitive bidding required, no approval required. This request is for a one-week continuation of the Armed Security Services at the 28000 Ste. D Southwest Fwy, Rosenberg, Texas 77471 location.
Inter-Con Security Systems INC	\$5,005.00	Inter-Con Security Services for Rosenberg Office 12/19/2022 - 12/30/2022	No competitive bidding required, no approval required. This request is for a two-week continuation of the Armed Security Services at the 28000 Ste. D Southwest Fwy, Rosenberg, Texas 77471 location.
Catalis Regulatory & Compliance LLC	\$89,919.00	FY2023 AWARE (On Point) Support & Maintenance Svcs Service Period: Dec 1, 2022 thru Aug 31, 2023	Proprietary Sole Source Approved. On Point Technology, LLC is the only provider of the AWARE software product. AWARE is an expert data analysis management software package designed specifically for the UI industry. On Point Technology, LLC is the only company that licenses, installs, and supports the AWARE software product.
SP Marketplace Holdings INC	\$25,000.00	SP Marketplace FY 2023	Proprietary Sole Source Approved. This request was for the required upgrade and customization to the existing SP Marketplace Holdings Inc. software product. SP Marketplace Holdings Inc. has made several software upgrades to the product that need to be installed and is compatible with SharePoint. The software upgrades will enable our office to expand the current security upgrades, product design, project task templates, and tracking project templates migration of CRM records, documents and reporting capabilities. The system allows for a more integrated staff portal to be expanded across the current structure. This purchase is for an upgrade to the existing software.
GED Testing Services LLC	\$750,000.00	GEDTS FY2023	Proprietary Sole Source Purchase-Renewal PO issued in FY23. GEDTS and ETS are currently the only two entities authorized by the Teachers Education Agency (TEA) to deliver and administer a high school diploma equivalency test in Texas. TEA selected these entities through a competitive process. TWC staff recommended a proprietary procurement to select GEDTS and ETS to serve as the two entities that deliver and administer high school diploma equivalency tests to fulfill TWC's responsibilities under the High School Equivalency Subsidy Program to subsidize the costs of HB3 (2019) High School Diploma Equivalency Agreements providing those exams until funds are no longer available.

SCHEDULE OF ITEMIZED PURCHASES
 For the Fiscal Year Ended August 31, 2023

Vendor Name	PO Amount	Item Description	Justification
Third Sector New England INC	\$150,000.00	BUILD Initiative 2023 Annual Membership Fee	Proprietary Sole Source Approved. The BUILD Initiative is a national organization that advances work on behalf of young children from prenatal to five-year-olds, their families, and communities. The BUILD Initiative supports states as they build early childhood systems across multiple state agencies serving young children and their families. As the sole membership organization for states with this specific focus on early childhood systems building, participation in the BUILD Initiative provides an opportunity to work with other states and their agency partners who seek to create unified and coordinated early childhood systems. BUILD state membership will support Texas' federal Preschool Development Grant (PDG).
The Bradt Companies LLC	\$12,912.00	FY23 Grand Prairie Transocket Meter Base Replacement	PROPRIETARY SOLE SOURCE APPROVED. Per Oncor, Electrical Utility Company, the transocket meter base at the Grand Prairie AOB had to be replaced. Oncor sent their specified electrical meter materials to Brandt for installation at the Grand Prairie AOB; Oncor deemed them the only vendor that can provide the replacement.

THIS PAGE INTENTIONALLY LEFT BLANK

Texas Workforce Commission (320)

HUB STRATEGIC PLAN PROGRESS REPORT

For the Fiscal Year Ended August 31, 2024

(Source: Texas Government Code, Section 2161.124)

Category	Actual for FY 22 *	Actual for FY 23 *	Goal for FY 24**
Heavy construction other than building contracts	0.00%	0.00%	0.00%
Building construction, including general contractors and operative builders contracts	0.00%	0.00%	0.00%
Special trade construction contracts	37.76%	12.05%	32.90%
Professional services contracts	78.77%	97.40%	23.70%
Other services contracts	30.63%	9.84%	26.00%
Commodities contracts	12.01%	48.60%	21.10%

* **Actual** = Percent spent with HUBS from HUB report.

** **Goal** = Strategic Plan HUB goal.

Linda Alphonse

 Prepared By

Sonya Bebley, CTCD, CTCM

 APPROVED BY (Signature Required)

Linda Alphonse

 Printed Name

Sonya Bebley

 Printed Name

737-400-5562

 Phone Number

737-400-5694

 Phone Number

APPROPRIATION ITEM TRANSFERS*

For the Fiscal Year Ended August 31, 2023

ITEM OF APPROPRIATION

			<u>Transfers-In</u>	<u>Transfers-Out</u>	<u>Net Transfers</u>
A. Goal: Workforce Development					
Strategies					
A.1.1	13035	Workforce Investment Act - Adult and Dislocated	\$ 699,798.54	\$ (1,481,198.40)	\$ (781,399.86)
	56002	Workforce Investment Act - Adult and Dislocated	59,200.20		59,200.20
	56010	Workforce Investment Act - Adult and Dislocated	(2,172.12)		(2,172.12)
	47001	Workforce Investment Act - Adult and Dislocated	113,523.31		113,523.31
	57001	Workforce Investment Act - Adult and Dislocated	16,952.29		16,952.29
	57002	Workforce Investment Act - Adult and Dislocated	-	(36,534.95)	(36,534.95)
	57003	Workforce Investment Act - Adult and Dislocated	26,910.00	(42,064.73)	(15,154.73)
	57009	Workforce Investment Act - Adult and Dislocated	32.38		32.38
	57010	Workforce Investment Act - Adult and Dislocated	28,354.54		28,354.54
	57150	Workforce Investment Act - Adult and Dislocated	1,238,397.80		1,238,397.80
A.1.2	13036	Workforce Investment Act - Youth		(4,155.96)	(4,155.96)
A.1.3	13037	TANF Choices	52,982.24	(978,900.78)	(925,918.54)
	56010	TANF Choices	(1,700.48)		(1,700.48)
	47001	TANF Choices	54,851.72		54,851.72
	57001	TANF Choices	7,416.63		7,416.63
	57003	TANF Choices	13,110.00	(19,110.44)	(6,000.44)
	57009	TANF Choices	79.52		79.52
	57010	TANF Choices	20,573.53		20,573.53
	57150	TANF Choices	884,569.86		884,569.86
A.1.4	13038	Employment and Community Services	108,459.63	(8,964,675.59)	(8,856,215.96)
	56010	Employment and Community Services	(8,868.39)		(8,868.39)
	47001	Employment and Community Services	103,897.43		103,897.43
	57001	Employment and Community Services	22,249.88		22,249.88
	57003	Employment and Community Services	24,840.00	(108,459.63)	(83,619.63)
	57005	Employment and Community Services	2,639,116.00		2,639,116.00
	57009	Employment and Community Services	62.48		62.48
	57010	Employment and Community Services	168,673.97		168,673.97
	57150	Employment and Community Services	5,732,012.64		5,732,012.64
	56005	Employment and Community Services	86,131.05		86,131.05
A.1.5	13039	SNAP E&T	201,075.12	(456,935.31)	(255,860.19)
	46001	SNAP E&T	(15,070.00)	(727.60)	(15,797.60)
	56004	SNAP E&T		(0.66)	(0.66)
	56010	SNAP E&T		(987.28)	(987.28)
	57002	SNAP E&T	74,547.22	(118,640.10)	(44,092.88)
	57009	SNAP E&T	36.24	(459.24)	(423.00)
	57010	SNAP E&T	21,849.41	(17,124.92)	4,724.49
	57150	SNAP E&T	248,071.28	(56,772.32)	191,298.96
A.1.6	13040	Trade Affected Worker Training and Assistance	12,927.61	(312,232.36)	(299,304.75)
	56010	Trade Affected Worker Training and Assistance	(753.25)		(753.25)
	47001	Trade Affected Worker Training and Assistance	29,335.79		29,335.79
	57001	Trade Affected Worker Training and Assistance	6,357.11		6,357.11

APPROPRIATION ITEM TRANSFERS*

For the Fiscal Year Ended August 31, 2023

ITEM OF APPROPRIATION

			<u>Transfers-In</u>	<u>Transfers-Out</u>	<u>Net Transfers</u>
	57003	Trade Affected Worker Training and Assistance	6,900.00	(12,927.61)	(6,027.61)
	57009	Trade Affected Worker Training and Assistance	73.84		73.84
	57010	Trade Affected Worker Training and Assistance	22,639.31		22,639.31
	57150	Trade Affected Worker Training and Assistance	247,679.56		247,679.56
A.1.7	13043	Senior Employment Services	0.54	(1,429.26)	(1,428.72)
A.1.8	13044	Apprenticeship	259,768.53	(750,828.90)	(491,060.37)
	57005	Apprenticeship	99,900.00		99,900.00
	57009	Apprenticeship	14.20		14.20
A.1.9	13059	Adult Education and Family Literacy	13,761.70	(42,246.85)	(28,485.15)
	47001	Adult Education and Family Literacy	29,947.02		29,947.02
	57001	Adult Education and Family Literacy	5,297.59		5,297.59
	57003	Adult Education and Family Literacy	6,900.00	(13,761.70)	(6,861.70)
	57009	Adult Education and Family Literacy	102.24		102.24
A.2.1	13060	Vocational Rehabilitation	852,198.04	(9,605,270.59)	(8,753,072.55)
	46001	Vocational Rehabilitation	1,498.16		1,498.16
	56001	Vocational Rehabilitation	2,248.12		2,248.12
	56003	Vocational Rehabilitation	4,862.20		4,862.20
	56004	Vocational Rehabilitation	0.66		0.66
	56008	Vocational Rehabilitation	2,746.51		2,746.51
	56010	Vocational Rehabilitation	(12,223.52)		(12,223.52)
	56011	Vocational Rehabilitation	244.00		244.00
	47001	Vocational Rehabilitation	1,468,921.71		1,468,921.71
	57001	Vocational Rehabilitation	502,211.54		502,211.54
	57002	Vocational Rehabilitation	80,627.83		80,627.83
	57003	Vocational Rehabilitation	182,160.00	(536,499.91)	(354,339.91)
	57009	Vocational Rehabilitation	258.72	(531.53)	(272.81)
	57010	Vocational Rehabilitation	164,089.80		164,089.80
	57150	Vocational Rehabilitation	7,207,624.86	(100,000.00)	7,107,624.86
	56005	Vocational Rehabilitation		(86,131.05)	(86,131.05)
A.2.2	13061	Business Enterprises of Texas (BET)	2,900.93	(268,876.95)	(265,976.02)
	57001	Business Enterprises of Texas (BET)	4,238.07		4,238.07
	57003	Business Enterprises of Texas (BET)		(2,900.93)	(2,900.93)
	57007	Business Enterprises of Texas (BET)	250,000.00		250,000.00
	57009	Business Enterprises of Texas (BET)	13,468.25		13,468.25
A.3.1	13028	Skills Development	161,186.09	(1,245,740.71)	(1,084,554.62)
	46001	Skills Development		(176.82)	(176.82)
	56001	Skills Development		(1,057.94)	(1,057.94)
	56002	Skills Development	300,000.00	(59,108.95)	240,891.05
	56003	Skills Development		(881.52)	(881.52)
	56011	Skills Development		(4.08)	(4.08)
	57009	Skills Development	793.94	(10,388.04)	(9,594.10)
	57150	Skills Development	516.79	(222.48)	294.31

APPROPRIATION ITEM TRANSFERS*

For the Fiscal Year Ended August 31, 2023

ITEM OF APPROPRIATION

			<u>Transfers-In</u>	<u>Transfers-Out</u>	<u>Net Transfers</u>
A.3.3	13033	Labor Market and Career Information	334,570.90	(126,252.98)	208,317.92
	56002	Labor Market and Career Information		(300,000.00)	(300,000.00)
	47001	Labor Market and Career Information	90,910.41		90,910.41
	57001	Labor Market and Career Information	13,773.73		13,773.73
	57003	Labor Market and Career Information	21,390.00	(33,035.40)	(11,645.40)
	57009	Labor Market and Career Information	178.84	(1,535.50)	(1,356.66)
A.3.4	13045	Work Opportunity Tax Credit Certification	6,237.25	(25,499.34)	(19,262.09)
	47001	Work Opportunity Tax Credit Certification	20,626.74		20,626.74
	57003	Work Opportunity Tax Credit Certification	4,830.00	(6,237.25)	(1,407.25)
	57009	Work Opportunity Tax Credit Certification	42.60		42.60
A.3.5	13046	Foreign Labor Certification	4,677.93	(18,290.30)	(13,612.37)
	47001	Foreign Labor Certification	14,820.70		14,820.70
	57003	Foreign Labor Certification	3,450.00	(4,677.93)	(1,227.93)
	57009	Foreign Labor Certification	19.60		19.60
A.4.1	13047	TANF Choices & Mandatory Child Care		(54,059,779.95)	(54,059,779.95)
A.4.2	13048	At-Risk & Transitional Child Care	54,764,156.99	(868,030.18)	53,896,126.81
	57150	At-Risk & Transitional Child Care	1,200,000.00	(31,106.84)	1,168,893.16
A.4.3	13050	Child Care Administration	(275,147.71)	(3,987,214.04)	(4,262,361.75)
	56010	Child Care Administration	(4,387.60)		(4,387.60)
	47001	Child Care Administration	148,207.04		148,207.04
	57001	Child Care Administration	25,428.43		25,428.43
	57003	Child Care Administration	34,500.00	(62,009.25)	(27,509.25)
	57006	Child Care Administration	467,788.00		467,788.00
	57009	Child Care Administration	31.24		31.24
	57010	Child Care Administration	59,432.77		59,432.77
	57150	Child Care Administration	2,582,943.96		2,582,943.96
A.5.1	13052	Unemployment Claims	2,131,304.98	(16,833,415.95)	(14,702,110.97)
	56003	Unemployment Claims	275,740.29	(275,740.29)	0.00
	56006	Unemployment Claims	(90.00)		(90.00)
	56008	Unemployment Claims	(347,370.99)		(347,370.99)
	56010	Unemployment Claims	(3,597.73)		(3,597.73)
	47001	Unemployment Claims	2,424,132.91	(225,802.43)	2,198,330.48
	57001	Unemployment Claims	278,653.23	(45,782.98)	232,870.25
	57003	Unemployment Claims	2,894,468.75	(1,552,550.60)	1,341,918.15
	57009	Unemployment Claims	14,670.94	(968.87)	13,702.07
	57010	Unemployment Claims	182,139.32		182,139.32
	57011	Unemployment Claims		(24,459.81)	(24,459.81)
	57150	Unemployment Claims	11,114,669.23	(6,000.00)	11,108,669.23

APPROPRIATION ITEM TRANSFERS*

For the Fiscal Year Ended August 31, 2023

ITEM OF APPROPRIATION

			<u>Transfers-In</u>	<u>Transfers-Out</u>	<u>Net Transfers</u>
A.5.2	13053	Unemployment Appeals	76,132.95	(5,513,854.47)	(5,437,721.52)
	56010	Unemployment Appeals	(18,435.94)		(18,435.94)
	47001	Unemployment Appeals	166,846.97		166,846.97
	57001	Unemployment Appeals	56,154.45		56,154.45
	57003	Unemployment Appeals	40,020.00	(76,132.95)	(36,112.95)
	57009	Unemployment Appeals	156.20		156.20
	57010	Unemployment Appeals	138,607.65		138,607.65
	57150	Unemployment Appeals	5,130,505.14		5,130,505.14
A.5.3	13054	Unemployment Tax Collection	208,410.19	(5,563,404.39)	(5,354,994.20)
	56010	Unemployment Tax Collection	(8,868.39)		(8,868.39)
	47001	Unemployment Tax Collection	163,636.45	(21,698.59)	141,937.86
	57001	Unemployment Tax Collection	88,999.51		88,999.51
	57003	Unemployment Tax Collection	43,470.00	(119,829.15)	(76,359.15)
	57009	Unemployment Tax Collection	113.60		113.60
	57010	Unemployment Tax Collection	118,665.65		118,665.65
	57150	Unemployment Tax Collection	5,130,505.14		5,130,505.14
			<u>\$ 114,369,510.73</u>	<u>\$ (115,121,275.53)</u>	<u>\$ (751,764.80)</u>

B. Goal: Program Accountability/Enforcement Strategies

B.1.1	13055	Subrecipient Monitoring	\$ 805,964.31	\$ (177,661.75)	\$ 628,302.56
	47001	Subrecipient Monitoring	60,482.27		60,482.27
	57001	Subrecipient Monitoring	33,904.56		33,904.56
	57003	Subrecipient Monitoring	12,420.00	(20,615.32)	(8,195.32)
	57009	Subrecipient Monitoring	48.28		48.28
	57150	Subrecipient Monitoring	14,285.00		14,285.00
B.1.2	13056	Prgm Support, Tech Asst & Training Svcs	138,860.05	(47,448.29)	91,411.76
	57009	Prgm Support, Tech Asst & Training Svcs	355.28		355.28
B.1.3	13057	Labor Law Enforcement	73,423.60	(277,150.72)	(203,727.12)
	46001	Labor Law Enforcement		(398.51)	(398.51)
	56001	Labor Law Enforcement		(1,190.18)	(1,190.18)
	56003	Labor Law Enforcement		(2,524.10)	(2,524.10)
	56008	Labor Law Enforcement		(2,746.51)	(2,746.51)
	56011	Labor Law Enforcement		(239.92)	(239.92)
	47001	Labor Law Enforcement	109,944.15		109,944.15
	57001	Labor Law Enforcement	16,785.14		16,785.14
	57003	Labor Law Enforcement	22,563.26	(32,146.89)	(9,583.63)
	57009	Labor Law Enforcement	76.48	(667.98)	(591.50)
	57011	Labor Law Enforcement	2,029.23		2,029.23
	57150	Labor Law Enforcement	60,196.38		60,196.38

APPROPRIATION ITEM TRANSFERS*

For the Fiscal Year Ended August 31, 2023

ITEM OF APPROPRIATION

			<u>Transfers-In</u>	<u>Transfers-Out</u>	<u>Net Transfers</u>
B.1.4	13058	Career Schools & Colleges	13,801.24	(87,716.91)	(73,915.67)
	46001	Career Schools & Colleges	8,341.29	(88.98)	8,252.31
	56002	Career Schools & Colleges		(91.25)	(91.25)
	56003	Career Schools & Colleges		(538.50)	(538.50)
	47001	Career Schools & Colleges	29,688.06		29,688.06
	57001	Career Schools & Colleges	20,521.71		20,521.71
	57003	Career Schools & Colleges	11,000.22	(9,917.84)	1,082.38
	57009	Career Schools & Colleges	48.66	(417.49)	(368.83)
	57011	Career Schools & Colleges	8,116.97		8,116.97
	57150	Career Schools & Colleges	10,000.00		10,000.00
B.2.1	13034	Civil Rights	95,187.37	(131,688.61)	(36,501.24)
	46001	Civil Rights	6,728.71	(106.25)	6,622.46
	56003	Civil Rights		(918.08)	(918.08)
	47001	Civil Rights	131,623.69	(52,325.35)	79,298.34
	57001	Civil Rights	6,357.11		6,357.11
	57003	Civil Rights	(38,313.63)	(27,741.07)	(66,054.70)
	57009	Civil Rights	264.12		264.12
	57011	Civil Rights	14,313.61		14,313.61
	57150	Civil Rights	10,715.00		10,715.00
			\$ 1,679,732.12	\$ (874,340.50)	\$ 805,391.62
C. Goal: Indirect Administration					
Strategies					
C.1.1	13800	Central Administration	\$ 26,324.90	\$ (58,714.20)	\$ (32,389.30)
C.1.2	13801	Information Resources	14,376.43	(4,343.23)	10,033.20
C.1.3	13802	Other Support Services	<u>20,277.97</u>	<u>(51,548.69)</u>	<u>(31,270.72)</u>
			\$ <u>60,979.30</u>	\$ <u>(114,606.12)</u>	\$ <u>(53,626.82)</u>
NET APPROPRIATION TRANSFERS			\$ <u><u>116,110,222.15</u></u>	\$ <u><u>(116,110,222.15)</u></u>	<u><u>0.00</u></u>

*This schedule does not include Benefit Replacement Pay, Longevity, Earned Federal Funds, Insurance, Retirement, FICA, Rider Reduction Transfers, Supplemental and Contingencies.

INDIRECT COST SCHEDULE

For the Fiscal Year Ended August 31, 2023

A. Payroll-Related Costs*	
FICA Employer Matching Contribution	\$ 18,301,924.29
Group Health Insurance	57,971,241.09
Retirement	23,764,380.41
Payroll Health Insurance Contribution	2,169,333.31
Unemployment for TWC	193,728.29
** Unemployment Paid on Behalf of Other Agencies	<u>(1,663,443.37)</u>
Total Payroll-Related Costs	\$ <u>100,737,164.02</u>
State Office of Risk Management - Worker's Compensation	616,113.59
Benefit Replacement Pay (BRP)	<u>171,000.00</u>
Total Workers' Compensation and BRP	<u>787,113.59</u>
B. Indirect Costs - Not reported on operating statements	<u>0.00</u>
C. Indirect Costs - Statewide Full Cost Allocation Plan	
Comptroller of Public Accounts	491,084.68
Department Public Safety - Capitol Security	(133,705.39)
Texas Facilities Commission	1,664,085.99
Office of the Governor	<u>23,466.89</u>
Total Indirect Costs - Statewide Full Cost Allocation Plan	<u>2,044,932.17</u>
TOTAL INDIRECT COSTS	\$ <u><u>103,569,209.78</u></u>

* Payroll-Related Costs Reconciliation to Annual Financial Report

	<i>Payroll-Related Costs per Indirect Cost Schedule</i>	<i>Amounts Reclassified to Capital Assets on the Annual Financial Report (AFR)</i>	<i>Payroll-Related Costs Reported on the AFR (Exhibit II)</i>
<i>FICA Employer Matching Contribution</i>	\$ 18,301,924.29	\$ 156,658.07	\$ 18,458,582.36
<i>Group Health Insurance</i>	57,971,241.09	283,826.01	58,255,067.10
<i>Retirement</i>	23,764,380.41	201,628.21	23,966,008.62
<i>Payroll Health Insurance Contribution</i>	2,169,333.31	18,568.37	2,187,901.68
<i>Unemployment for TWC</i>	193,728.29	0.00	193,728.29
<i>** Unemployment Paid on Behalf of Other Agencies</i>	<u>(1,663,443.37)</u>	<u>0.00</u>	<u>(1,663,443.37)</u>
Total Payroll-Related Costs	\$ <u>100,737,164.02</u>	\$ <u>660,680.66</u>	\$ <u>101,397,844.68</u>

** Negative expenditures are the result of prior fiscal year adjustments of Unemployment Insurance payments made to former state employees on behalf of other state agencies.

THIS PAGE INTENTIONALLY LEFT BLANK

AGENCY REPORT OF RECYCLED, REMANUFACTURED AND ENVIRONMENTALLY SENSITIVE PURCHASES

For the Fiscal Year Ended August 31, 2023

Point of Contact: Sonya Bebley
 Phone Number: 737-400-5694
 E-mail Address: sonya.bebley@twc.texas.gov

Category	Description	Total Expenditures
Total E1, <i>Including 1st Choice</i>	Recycled	\$ 101,419.94
Total E1, <i>Including 1st Choice</i>	Remanufactured	
Total E1, <i>Including 1st Choice</i>	Environmentally Sensitive	
Total E1, E2, and E3		\$ 101,419.94
<i>Includes Recycled 1st Choice Targeted Totals</i>		

FY 2023 1st Choice Targeted Commodities	Expenditures			% Spent on 1st Choice Products 100*[A/(A+B)]
	1st Choice Products [A]	Virgin Counter- part [B]	Total [A+B]	
Motor Oil & Lubricants	\$ -	\$ -	\$ -	
Toilet Paper, Seat Covers & Paper Towels	20,609.38		20,609.38	100%
Printing Paper, Copier Paper & Computer Paper	64,826.13	4,709.66	69,535.79	100%
Business Envelopes	15,984.43		15,984.43	100%
Total 1st Choice Targeted Commodities	\$ 101,419.94	\$ 4,709.66	\$ 106,129.60	100%

Summary of Total Number of Justification Letters	Total Cost	Total Quality	Total Not Available	Total Other
Motor Oil & Lubricants				
Toilet Paper, Seat Covers & Paper Towels				
Printing Paper, Copier Paper & Computer Paper	\$ 4,709.66			
Business Envelopes				
Total Number(s)	\$ 4,709.66	0	0	0

SCHEDULE OF STATE-OWNED OR LEASED VEHICLES USED BY STATE EMPLOYEES

For the Fiscal Year Ended August 31, 2023

Last	Driver Name First	Job Title
Alvarez	Joe	Clerk III
Arnold	Keith	Inventory & Store Specialist IV
Arocho	Rafael	Maintenance Specialist IV
Arriaga	Michael	Maintenance Specialist IV
Beard	Joel	Training Specialist IV
Beasley	Richard	Clerk III
Behringer	Alison	Training Specialist IV
Beleck	David	Program Specialist II
Bustamante	Victor	Program Specialist IV
Bradford	Scott	Risk Management Specialist IV
Britt	Mary	Program Specialist II
Brown	Julie	Orientation & Mobility Ins IV
Brown	Michael	Administrative Assistant III
Carballo	Carlos	Drafting Technician I
Castilleja	Israel	Inventory & Store Specialist II
Chavanne	Thomas	Manager III
Ciobu	Firuta	Training Specialist III
Clarke	Todd	Orientation & Mobility Ins IV
Cooke	Melissa	Training Specialist III
Cruz	Conrad	Manager III
Daugherty	Heather	Training Specialist III
Diaz	Joshua	Inventory and Store Spec II
Diaz	Roberto	Training Specialist III
Dotson	Luisa	Orientation & Mobility Ins IV
Druker	Yael	Training Specialist IV
Dunn	Clayton	Maintenance Specialist V
Duran	Daniel	Administrative Assistant III
Fogel	Mariel	Training Specialist IV
Frederick	Mandy	Program Specialist IV
Gardner	Mary	Adaptive Skills Instructor IV
Gonzales	Jo Ann	HR Liaison
Gonzalez	Cynthia	Manager IV
Greely	Nancy	BET Business Consultant IV
Hall	Timothy	Program Supervisor VI
Hand	Kaitlan	Training Specialist III
Hanna	Aaron	BET Business Consultant IV
Haywood	Christopher	Clerk III
Hatfield	Cody	Program Specialist IV
Hernandez	John	Program Supervisor VI
Hibbitts	Kirt	Center VR Teacher IV
Hurtado	David	Inventory and Store Specialist II

SCHEDULE OF STATE-OWNED OR LEASED VEHICLES USED BY STATE EMPLOYEES

For the Fiscal Year Ended August 31, 2023

Last	Driver Name First	Job Title
Jackson	LaToya	Administrative Assistant III
Jean	Norman	Maintenance Specialist III
Johnson	Jerry	Fleet Manager I
Kachoris	Michael	HVAC Mechanic III
Keith	Shameka	Resident Specialist V
Kenyon	Joann	Management Analyst III
King	Gerard	Manager I
Kovalcheck	Roger	Risk Management Specialist IV
Lewis	Robert	Manager I
Luna	Frank	Maintenance Specialist III
Mann	Raoul	Safety Officer III
Melgarejo	Erica	Workforce Development Specialist II
Mendoza	Ada	Manager I
Meyer	John	Manager II
Meyers	Dustin	Orientation & Mobility Ins III
Moore	Lisa	Human Services Specialist VI
Mullen	Edward	Orientation & Mobility Ins IV
Muzquiz	Rebecca	Manager I
Nay	James	Training Specialist IV
Noblitt	James	Career Guidance Instructor IV
Odom	Crawford	Program Specialist IV
Parker	Stacy	Training Specialist IV
Penington	Anne	Program Specialist II
Perez	Stephen	Clerk III
Perfetto	Thomas	Inventory & Store Specialist II
Pewitt	John	Inventory & Store Specialist IV
Pocius	Clayton	Project Manager IV
Ramirez	Robert	Inventory and Store Spec V
Ramon	Maria	Staff Services Officer III
Ramos	Jose	Training Specialist II
Rios	Dezi	Program Specialist IV
Rivera	Alberto	Project Manager III
Roberts	Helena	Orientation & Mobility Ins IV
Rodgers	Chad	Voc Rehabilitation Teacher III
Rodriguez	Julia	Program Specialist II
Rodriguez	Ramon	Inventory & Store Specialist I
Royder	Jody Renee	Training Specialist IV
Salas	Carmen	Resident Specialist III
Salinas Jr.	Florencio	Program Supervisor III
Simcik	Aaron	Maintenance Specialist III
Shaw	Tracey	Manager IV
Shogan	Meghan	Planner V

SCHEDULE OF STATE-OWNED OR LEASED VEHICLES USED BY STATE EMPLOYEES

For the Fiscal Year Ended August 31, 2023

Last	Driver Name		Job Title
	First		
Smith	Nancy		Program Specialist IV
Stewart	Melia		Training Specialist III
Sweezy	Samantha		BET Business Consultant II
Teske	Christopher		Risk Management Specialist IV
Trevino	Miguel		Maintenance Specialist V
Vargas	Juan		HVAC Mechanic III
Vargas	Henry		Inventory and Store Specialist II
Vazquez	Rogelio		Electrician III
Weber	Wayne		Maintenance Supervisor IV
Weinrick	Timothy		Inventory and Store Specialist IV
White	Louis		BET Business Consultant IV
Yarrum	Justus		Training Specialist II
Zambrano	David		Document Services Tech V
Zapata	Martin		Maintenance Specialist IV

Purpose: Daily Operational Business Needs

SCHEDULE OF VEHICLES PURCHASED
 For the Fiscal Year Ended August 31, 2023

Make	Model	Price	Type of Use	MPG Fuel Efficiency Rating
Chevrolet	Suburban	\$ 48,160.00	Operations	15 City/20 HWY
Chevrolet	Suburban	\$ 48,160.00	Operations	15 City/20 HWY
Chevrolet	Suburban	\$ 48,160.00	Operations	15 City/20 HWY
Chevrolet	Suburban	\$ 48,160.00	Operations	15 City/20 HWY



101 East 15th Street
Austin, Texas 78778 0001
512 463 2222
twc.texas.gov

Equal Opportunity Employer/Program. Auxiliary aids and services are available upon request to individuals with disabilities. Relay Texas: 800 735 2989 (TTY) and 711 (Voice).