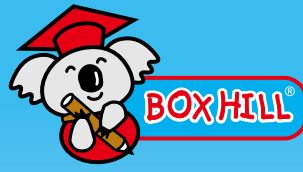


QUALITY SCHOOLS GUIDE

The Standard 英文虎報

November 2024





Box Hill (HK) International Kindergarten & Pre-school
 博士山(香港)國際幼稚園暨幼兒園

Confidence for a brighter future

ADMISSIONS NOW OPEN

PN - K3 (2-6 Years old)

 **Immersive English Learning Environment
Based on EYFS from the UK**

 **Systematic Chinese Curriculum
(Cantonese & Mandarin)**

FO TAN School Bus Service Available for
Science Park & Pak Shek Kok Area #

TSEUNG KWAN O Whole Day Class Available for K1 - K3! *

 **2025/26 ADMISSIONS OPEN
APPLY ONLINE!** bit.ly/3tKf2vv



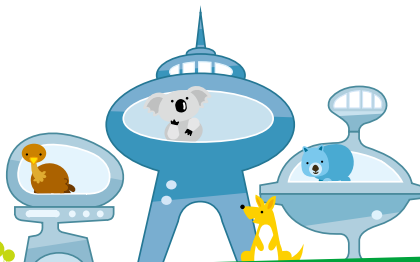
Parent-child Programmes (0.5-3 Years old)

 Interview waived for Pre-Nursery class
if certain conditions are met

Enrichment Programmes (2-6 Years old)

 Phonics, STEM, Sensory, Public Speaking,
Mandarin and more!

 **LEARN
MORE**
bit.ly/3eEYzEU



Come Visit Us!

Register for a School Tour
bit.ly/3yniv6F



* Subject to Availability
* Whole Day Class available
at Tseung Kwan O Campus

Ma On Shan
Vista Paradiso
2750 6323
馬鞍山 聽濤雅苑

Fo Tan
Jubilee Square
2688 2161
火炭 銀禧薈

Tseung Kwan O
Mount Verdant
2623 0023
將軍澳 翠嶺峰

www.boxhill.edu.hk

[boxhill.moments](https://www.instagram.com/boxhill.moments)

hello@boxhill.edu.hk

Increasing focus on digital transformation

We live in a rapidly-changing world where innovation and technology have advanced at a phenomenal pace, with the digital revolution impacting both the nature and scope of education.

Experts point out that to implement a successful digital transformation, schools must enhance their digital capacity by establishing the necessary culture, policies, infrastructure, as well as the digital competence of students and staff to support the effective integration of technology in teaching and learning practices.

Parents now are increasingly concerned with the level of experience and the digital capacity within the school ecosystem, as they want to ensure that their children are well-equipped with the requisite knowledge, know-how and skills to enter this new world economic order.

With big data and artificial intelligence coming to the fore in almost every aspect of our life, a holistic education delivered in a liberal and inquisitive mode is definitely more effective in nurturing children to become intelligent, adaptable whole persons who possess the drive and flexibility to realize their full potentials and tackle challenges unfazed.

A school is a community of learners who can learn with and from one another, so the caliber of the teaching staff as well as the quality of the cohorts are important considerations in molding students' personality and capabilities. There is the added dimension of interdisciplinary learning which calls for a holistic approach that mirrors real life where activities are not segregated into separate subjects.

Schools should also enable students to understand their own cultures and to respect the diversity of others in such areas as values, tradition, behavior and practices. The ultimate goal is develop them to become active and compassionate citizens.

We hope this Guide will provide you with useful reference in choosing the best-fit school for your child.



Andy Ng
Features Editor



CONTENTS



EDITOR'S MESSAGE

- 01** Editor's Message
Increasing focus on digital transformation



EVENT HIGHLIGHTS

- 08** Enthusiastic parents found a goldmine of useful information at The Standard's International Schools Fair 2024



FEATURE

- 10** HKICF
Choirs a sight for sore eyes
- 11** Adelaide University
University offers best of both worlds in Adelaide



INTERNATIONAL SCHOOLS

- 06** Hong Kong Academy
New Scholarship Programme
- 12** Cosmic Education Group
Cosmic Education Group Expands Presence in Asia-Pacific



"Quality Schools Guide" is published by The Standard

Display Advertising Department
3/F., Sing Tao News Corporation Building,
7 Chun Cheong Street,
Tseung Kwan O Industrial Estate,
Tseung Kwan O, New Territories,
Hong Kong

Advertising Hotline: (852) 3181 3311
Fax: 2758 3579

All rights reserved.

Features Editor: Andy Ng
Designer: Yuki Chung
Business Director: Irene Chan

Website: www.thestandard.com.hk
Email: advertise@thestandard.com.hk



ANNUAL TUITION FEES 2024-25

RECEPTION
HKD \$93,400

PRIMARY
HKD \$118,100

SECONDARY
HKD \$131,700

UK CURRICULUM

Cambridge Assessment
International Education

ACADEMIC EXCELLENCE SINCE 1994

ALL THROUGH SCHOOL | RECEPTION TO YEAR 13 | AGES 4-18



Academic
Excellence



International
Environment



Innovative
Teaching
Methods



Extra-Curricular
Activities



Supportive
Learning
Environment



Competitive
Tuition
Fees

NO CAPITAL LEVY OR COMPULSORY DEBENTURES



KOREAN INTERNATIONAL SCHOOL

find **PASSION** foster **VISION** encourage **ACTION**

**ADMISSIONS
APPLY NOW**



**ADMISSION FEE WAIVED
FOR RECEPTION & YEAR 1**

For enquiries, please email: admissions@kis.edu.hk, call +852 2569 5500 or visit our website: www.kis.edu.hk

CONTENTS



INTERNATIONAL SCHOOLS

- 14 Box Hill (HK) International Kindergarten and Pre-school
Box Hill nurtures confident and respectful children
- 16 Shrewsbury International School Hong Kong
Introducing the Hanqing Bilingual Pathway: A World-Class Bilingual Education
- 18 Christian Alliance International School
A unique educational experience that shapes future leaders
- 20 German Swiss International School
The German Approach - A Bilingual Education
- 22 Stamford American School Hong Kong
Advocating for Inquiry-Based Learning from Age Five
- 24 YMCA Christian Academy
Developing Student Agency



DIRECTORY

- 28 International Schools
- 40 Educational Centres / Others



HONG KONG ACADEMY OPENING DOORS TO A WORLD OF OPPORTUNITY

Apply Now

or Book a Personalised Tour

 INCLUSIVE EDUCATION	 THREE PROGRAMME IB WORLD SCHOOL	 EXCEPTIONAL LOCATION	 GLOBAL ALUMNI NETWORK
 LOW STUDENT:TEACHER RATIO	 COMMITMENT TO INTERNATIONALISM	 AWARD-WINNING FACILITY	 STRONG HOME-SCHOOL PARTNERSHIP



Hong Kong Academy is a non-profit, international through-train school offering a joyful and rigorous education for children aged 3 to 18 years. HKA students hone the competencies, knowledge and skills they need to be successful today and in the future.



Hong Kong Academy
@hongkongacademy



Scholarships

Up to 100% tuition fees & capital levy waiver

Available for students entering G6 - G10. Applicants must be strong academic all-rounders, have a good attendance record and be able to demonstrate talent and commitment in a field of excellence such as leadership, service, sport, art or advanced academics.

33 Wai Man Road, Sai Kung, New Territories, Hong Kong SAR
+852 2655 1111
admissions@hkacademy.edu.hk
www.hkacademy.edu.hk



New Scholarship Programme



Hong Kong Academy created a merit-based scholarship programme about 18 months ago. Here they share what that looks like, who is eligible, how to apply and what makes HKA special.

Tell us about HKA scholarships

HKA is able to offer up to five 100% tuition fee merit-based scholarships each year to new students joining Grade 6 - 10 of secondary school. There are also a number of merit-based scholarships valuing from HK\$75,000 to HK\$150,000 of tuition



fees per annum. To be eligible a student must be a strong academic all-rounder, have a good attendance record and be able to demonstrate talent and commitment in a field of excellence such as leadership, service, sport, art or advanced academics. New students joining Grade 11 are not eligible but if a student is awarded a scholarship in a lower grade they will continue to be awarded it through Grades 11 and 12 as long as they keep up their grades, attendance and area of excellence.

And why should students and their parents choose Hong Kong Academy?

Our school is known for its strong community and we intentionally create a culture of belonging because we know that when students feel seen, known, and understood they are happier, more confident, and more successful as learners. Having this at the heart of our Mission sets HKA apart as a school and as a community.

HKA is one of only 8 fully-authorised, 3 programme IB World Schools in Hong Kong. Our students benefit from a highly personalised education due to smaller class sizes, and because we focus on a culture of belonging we create strong home-school partnerships with parents too. This focus and support of each child means they are well positioned to reach their full potential.



We know it is essential for teenagers to take care of their physical and mental health as well as their academics and our counselling team run an advisory and wellbeing curriculum for all students right through until they graduate. We are also unusual because we continue to include PE in the Grade 11 and 12 schedule to ensure that every student is given time to exercise and take care of themselves as they work towards their final projects and exams.



HKA offers a truly international education. Typically we have families representing 35-40 nationalities so our students benefit from studying alongside a highly diverse student body and are well equipped to go out into the world and work effectively alongside peers and colleagues with different backgrounds and



experience. Approximately 20% of our students graduate with a bi-lingual IB Diploma each year. Students can opt to study their home language and we also offer Chinese Language & Literature as well as Spanish, French and Mandarin language classes.

We always put our students' interests first and support them to make choices of classes and study pathways which best suit their interests and talents. All our students graduate with the HKA Diploma and the Global Citizen Diploma, and 95% of them earn the IB Diploma or Diploma certificates. This combination of 3 credentials gives our students a platform to be successful on every continent. We have alumni who are successful lawyers and bankers, we have creatives who are working in the music and media world, we have teachers, climate scientists, vets, physiotherapists, professional sailors and more.

How can interested students apply?

Applicants should apply through the school's standard application process and also submit: a personal statement related to their area of excellence, copies of awards, certificates or other recognitions, recommendation from a teacher, mentor or other supporting individual, and, a video recording where appropriate or a portfolio where appropriate. Scholarship applications must be submitted by 30th November to be considered for August 2025 start date, applicants may be invited for an interview and will be notified of the scholarship committee's decision 10th January.

For further information check HKA's website or contact their Admissions team.

Hong Kong Academy

33 Wai Man Road, Sai Kung, New Territories

Tel: 2655 1118

Email: admissions@hkacademy.edu.hk

Website: www.hkacademy.edu.hk/admissions

Enthusiastic parents found a goldmine of useful information at The Standard's International Schools Fair 2024

The Standard's International Schools Fair 2024, held on September 7 at the Cordis Hotel in Mongkok, was a resounding success, drawing enthusiastic crowds eager to discover the top international schools in Hong Kong.

More than 20 of Hong Kong's premier international schools showcased their offerings, providing numerous opportunities for visitors to gather insights from principals, head of schools, and admission officers at their booths. The event also featured three panel discussions and an information session led by experienced educators from various institutions, addressing topics close to the heart of parents. These topics included the benefits of international schooling for student growth; how international schools balance students' academics and beyond; admission processes, and more.

Attendees also had the chance to engage in Q&A sessions, where a variety of questions were addressed. Participating schools detailed how prospective students and their families could benefit from their comprehensive curricula, enriching extracurricular activities, and student-centered teaching approaches.



In addition to gaining valuable insights into teaching methods and school cultures tailored to their children's needs, visitors enjoyed a pop-up photo booth, received the latest edition of The Standard's International Schools Guide, and had the chance to win fantastic prizes, including general admission tickets to Hong Kong Disneyland and a free skating session at Lohas Rink.



Thinking about enrolling your child in an international school? Some useful tips you'll want to know

The first panel discussed the benefits of international schools, highlighting their inquiry-based, child-led approach that promotes critical thinking and creativity. Emphasizing a holistic education, the panelists noted the importance of extracurricular activities and strong parent-school collaboration to prepare children as adaptable global citizens in a multicultural environment like Hong Kong.

The transformative impact: How international schooling shapes student growth

The second panel discussion emphasized the importance of aligning educational philosophies with family values when selecting a school. Transformative education prioritizes personal development, soft skills, and community engagement. Key insights included the necessity of strong parent-school partnerships, as highlighted by Mr Richard Vanderpyl, who stressed that education is a collaborative effort.



Future Education: OECD 2030 Learning Compass & UFO curriculum

As the guest speaker for the information session, Mr Li Tik David, Director of Public Relations and School Promotion from Salesian School introduced how the vibrant local subsidized primary school embraces a holistic approach to education. The school's unique UFO Curriculum celebrates every child, fostering security, happiness, and purpose. It emphasizes being Unique, Friendly, and Optimistic—nurturing individual talents, self-love, and critical thinking.

The tug-of-war: How do international schools balance students' academic development and beyond?

The last panel discussion highlighted how international schools navigate the balance between students' academic development and personal growth. The panelists emphasized the crucial roles of parents and teachers as role models in inspiring children's passions through project-based learning.



Join us at our upcoming fair to discover the international school that best suits your child's needs!

International Schools Fair 2025

Date: March 8, 2025 (Saturday)

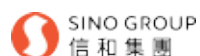
Venue: JW Marriott Hotel, Admiralty



Organizer:



Sponsors:



Exhibitors:



Choirs a sight for sore eyes

Music, for perhaps all but the occasional religious zealot, can transcend the boundaries that people so often draw between themselves and others. A choral performance particularly can restore that connection and, in trying times, even some long-forgotten sense of harmony.

That can literally be seen in the Hong Kong Inter-School Choral Festival's recent collaboration with New Sight.

It consisted of a virtual choir project in support of efforts to build the first eye hospital in Congo.

"This is more than just a regular music project," Kelvin Lau, artistic director of HKICF, said.

"We want the kids to learn how music intertwines with so many aspects of life.

Launched by the Hong Kong Virtuoso Chorus, HKICF has been providing choral education to local schools since 2011.

Spanning Hong Kong, Shenzhen, Norway and Congo, the project brings together 50 choirs and more than 2,000 participants to perform an original theme song, Love's Boundless Flight, stitched into a music video.

"It would be incredibly difficult 20 years ago to put together so many videos from people in different countries," Lau said.

"It warms my heart to see Congolese children singing the song," he said.

New Sight was founded by Joyce Samoutou-Wong, a family doctor here, and her husband Henri Samoutou in 2012.

Since it pioneered the first non-profit eye care center in Congo over a decade ago, the charity has empowered local communities through eye services, training programs and education - including the country's first optical workshop to produce prescription glasses.

"This virtual choir is about helping children see the needs of the world, and not just that, but actually exercise what is already in their hands to make a difference," said Samoutou-Wong.

"For this project, we're able to get about 50 students involved and they loved it.

"In Hong Kong, children are encouraged to reach for the stars, right? Whereas children in Congo really don't have the kind of opportunities that we sometimes take for granted," she said.

As their first eye center in the rural north of Congo was so



remote that only the people within the area could receive help, Samoutou-Wong and her family relocated to Ouessou in 2019 to build a comprehensive eye hospital at the invitation of the local government, set to open by the end of this year.

She continued: "During Covid, our children started the country's first children's magazine from the project Two Front Teeth. We partnered with over 30 schools, and that magazine has a national readership of 22,000 and is still growing. We see that health and education goes hand in hand.

"We're extremely proud of the work that we've been able to do and that's only been possible with supporters globally.

To be honest, my husband and I never set out to establish any charity.

We're medics, we open a door to help people in need," Samoutou-Wong said.

HKICF has held virtual choir projects in support of health-care workers and the Children's Cancer Foundation.

What started as a platform to connect students online during the pandemic has emerged as a celebration of music, strength and love.

"A doctor is a career path that many children dream of embarking upon," said Lau.

"And for someone who has gone that far, sacrificing their personal comfort to serve people in dire need, it certainly provides them with the context for the song and I hope it inspires the children."

It has certainly inspired Byra Lam, a primary school student in one of the choirs.

"I want to tell the children and the people in Congo that even though we live on different continents, we'll still support each other, no matter what," said Lam.

For another student, Zandrix Lam, it's the lyrics that touch him.

"The line that I like the most in Love's Boundless Flight is 'love is everywhere.' It really is if we choose to find it."

To view the virtual choir, visit the YouTube channel of the Hong Kong Virtuoso Chorus. For further details, check out HKICF and New Sight's websites: <https://hkicf.com/> and <https://www.newsightcongo.com/>.



University offers best of both worlds in Adelaide



Australia has long been a premier destination for international students, with its world-class education system, vibrant cities and stunning natural landscapes making for an irresistible mix. And joining the country's most prestigious institutions is the newly established Adelaide University.

Its arrival on the Hong Kong education scene was announced in a launch on September 23 in West Kowloon.

Its pedigree, however, is proven, having been formed as a result of a merger of the University of Adelaide and the University of South Australia.

With their academic infrastructure in place, the institution has embarked on accepting admission applications for more than 200 degrees and admitting students in 2026.

Regarded as one of Australia's prestigious "Group of Eight" research-intensive institutions, Adelaide University is poised to provide a diversified curriculum for students around the world.

"It's a unique opportunity for us to take the very best educators across two institutions, put them into single programs and get the best results," said co-vice chancellor David Lloyd, who led the Hong Kong delegation alongside his new counterpart Peter Hoj AC.

The university's over 200 programs are spread over undergraduate and postgraduate disciplines in sought-after fields of study.

The initial suite of degrees spans areas such as aviation, health, engineering, finance, business management, data science and information technology.

"Adelaide University is integrating cutting-edge research, industry insights and advanced learning technologies to deliver a transformative educational experience for our students," said Lloyd.

"This includes flexible, personalized pathways, project-based learning and the development of transferable skills."

Lloyd and Hoj emphasized that the university's approach aims to set new standards for graduate employability and success.

"Our curriculum reflects the diversity of the real-world workforce and our graduates will be well prepared to lead and excel in a rapidly evolving job market," they said.

Building on the internationally recognized research of its founding institutions, Adelaide University will focus on areas of strategic global priorities, including health, artificial intelligence, financial technologies and green energy.

While the number of international students dropped off during the three-year-long Covid pandemic, Lloyd said that the recovery since those lost years has been strong and steady.

"We have seen a steady recovery in the number of Hong Kong students," he said.

"And the landscape of Australian education is that Hong Kong has always been one of the primary engagement dominated markets for us and it's an area that we believe we will see continued engagement."

Adelaide University's diverse student population is expected to include international students from more than 100 countries, as well as the largest number of Australian students in the country.

With 85 to 86 percent of international students typically returning to their home countries after completing their studies, Hoj said that the university's programs are never meant to be a migration path.

"Our ambition is that we help educate them, provide them with the best research resources and best environment, so they can contribute to their country of origin," he said.

Beyond the university's extensive curriculum and industry connections, the city of Adelaide itself is a major draw for international students.

Consistently ranked as one of the world's most liveable cities, Adelaide is Australia's fastest-growing, with close industry ties, a vibrant cosmopolitan lifestyle and a welcoming multicultural community.

"Students come here from all over the world, attracted to our vibrant cosmopolitan lifestyle, welcoming multicultural community and close proximity to beaches, wine regions and other beautiful landscapes," said Lloyd and Hoj.

Adelaide University is expected to attract a large and diverse student body, comprising international students from more than 100 countries, as well as the largest cohort of Australian students in the nation.

Its graduates will join an alumni network of more than 400,000 individuals from 150 countries worldwide.





Cosmic Education Group Expands Presence in Asia-Pacific

Cosmic Education Group (CEG), a leader in exceptional Montessori education and the parent company of Guidepost Montessori and Nest Preschool, is thrilled to announce the opening of four new Guidepost Montessori campuses in Hong Kong in August, and Nest Preschool in Singapore in September 2024.

This expansion in Hong Kong and Singapore reinforces CEG's position as one of the largest operators of Montessori schools in Asia. With a network of 27 campuses located in Hong Kong, Singapore, Bali, and key cities in Mainland China, CEG offers high-quality, child-centered learning experiences for children ages 0-12.



Guidepost Montessori Mid-Levels

Close-knit school community and big network benefits:

At a CEG school, families get the advantages of an intimate school environment where everyone knows each other. Families enjoy the familiarity and personal connections within their campus while accessing network-wide benefits like free events for families, camps across Asia, and smooth transfers in the event of relocation.

In Hong Kong, Guidepost Montessori campuses are located conveniently in Causeway Bay, Chai Wan, Clearwater Bay, Discovery Bay, Happy Valley, Kennedy Town, Mid-Levels, Pok Fu Lam, Repulse Bay, and Sai Kung, featuring enriching indoor and outdoor gross motor playground spaces. In addition, Guidepost's approach to dual-language learning ensures that the entire curriculum is available in both English and Mandarin, with every classroom staffed by at least a full-time English teacher and a full-time Mandarin teacher.

"We are thrilled to celebrate the expansion of Guidepost Montessori campuses in Hong Kong and Nest Preschool in Singapore, providing more families with access to exceptional Montessori education," said Steve Xu, CEO and founder of Cosmic Education Group. "This strategic expansion further extends our reach in Asia and our commitment to fostering supportive communities and empowering children to reach their full potential."



CEG aims to provide unparalleled experiences for both children and their parents across its school network in Asia, focusing on key areas including:

Structured curriculum customised to each child:

CEG offers a scientifically sequenced curriculum designed to nurture children's independence at each stage of development. Each child's path through that curriculum is driven by her interests and choices, ensuring a deep engagement throughout.

True dual-language learning:

CEG's approach to language development goes beyond the bilingual structure of many schools, offering a full-time, full-curriculum approach that immerses children in both languages and offers them choices to learn in either context.

Exceptional experience for children and parents:

CEG schools prioritize children and parents, providing an unmatched educational program for children while making it easy for busy parents to be fully engaged in their children's education. Furthermore, CEG schools have no capital levies, material fees, debentures, registration fees, or other extra costs.

Cosmic Education Group

Admissions phone number: +852 9126 6211

Email: admissions@guidepost.hk

Website: guidepost.hk

Cosmic Education Group's website:

<https://cosmicedugroup.com/>

nurturing independence right from the start

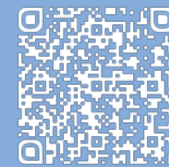
montessori programs for children ages 0 to 12 years

為0至12歲兒童而設的蒙特梭利課程



guidepost montessori

causeway bay | chai wan | clearwater bay
discovery bay | happy valley | kennedy town
mid-levels | pok fu lam | repulse bay | sai kung



book a tour
預約參觀校園

guideposthongkong

guidepost.hk

9126 6211





Box Hill nurtures confident and respectful children



Box Hill (HK) International Kindergarten and Pre-school cultivates children's character development to nurture them into confident and respectful individuals through a diverse array of hands-on activities, with the goal of providing quality education to children.

Raising respectful children

At Box Hill, the cultivation of respect is a fundamental aspect of the educational journey. Their dedicated educators employ a variety of research-based strategies to help children understand the importance of mutual respect. For example, they teach by role play; children are encouraged to take on different roles and engage in scenarios that promote respect, such as showing kindness to others, listening attentively, and valuing different perspectives. This hands-on approach enables children to effectively develop empathy and perspective-taking skills.

Furthermore, various activities such as workshops as well as parenting seminars are regularly conducted at the Ma On Shan campus. "Our goal is to encourage the respectful qualities instilled in students at school to extend into their homes and also all aspects of their lives," says Ms Luby Ng, School Principal of the Ma On Shan Campus.

A child-centered curriculum

Box Hill believes in the power of a child-centered curriculum that recognizes the unique qualities and learning styles of each child. The curriculum is designed to foster a love for learning and exploration by incorporating hands-

on activities, play-based learning, and interactive lessons. Children are encouraged to ask questions, make discoveries, and express their ideas while teachers encourage them through positive reinforcement. Mrs Holly Gonzales, School Development Specialist, further explains, "This approach not only enhances their cognitive development but also nurtures their creativity, critical thinking, problem-solving skills, and self-expression, setting them up for being confident leaders in the future."

Box Hill's UK Early Years Foundation Stage (EYFS) based curriculum also emphasizes on cultivating children's language skills from an early age. At the school, English is the primary language of instruction, but children will also be given plenty of opportunities to develop equal language proficiency in Cantonese and Mandarin. Teachers utilize a multitude of strategies that include interesting activities, modeling conversations and various props to engage students and encourage them to express themselves orally. Show-and-tell activities play a crucial role in providing ample opportunities for self-expression and language building. Instead of relying solely on paper-based reading or flashcards, real life objects are utilized to foster greater engagement and enhance language absorption. By fostering an interactive and stimulating learning environment, children can establish a strong connection between the languages they are acquiring.

Home-school collaboration

Box Hill acknowledges the crucial role parents play in their child's education and actively promotes a strong partnership between the home and the school. Open lines of communication give parents a glimpse into their child's behavior at school so that they can gain a better understanding of their child's abilities.

Luby elucidates on how the school actively encourages parents to participate in school activities, workshops, and events, fostering a sense of community and shared responsibility. "For instance, parents can volunteer to teach students their know-how, such as instruments, dancing, and even sign up as mystery storybook readers. We also have home activities for parents to collaborate with their child and learn in a fun and interactive way at home," she adds. "This collaborative approach ensures a holistic learning experience for the child, with consistent support from both home and school," she explains.



Box Hill (HK) International Kindergarten and Pre-school

3 Campuses: Ma On Shan, Fo Tan, Tseung Kwan O
Website / Facebook: boxhill.edu.hk
WhatsApp: +852 4621 1899
Email: hello@boxhill.edu.hk





Introducing the Hanqing Bilingual Pathway: A World-Class Bilingual Education



Shrewsbury International School Hong Kong is excited to announce the launch of the Hanqing Bilingual Pathway (HQP), opening for Early Years students in January 2025, with Year 1 to follow in August 2025. This ambitious, bespoke, and culturally rich programme is designed to offer an exceptional educational experience for young learners.

The HQP aims to expand linguistic and cultural learning experiences while supporting the advanced development of literacy skills in both Chinese and English. This unique approach is led by an outstanding team of native linguists, ensuring that students receive the best possible instruction. In addition to a balanced curriculum that includes specialist instruction in Music, Physical Education, and Aquatics, students will also benefit from sector-leading school-selection guidance.

“Underpinned by the academic rigour of the Early Years and Foundation Stage framework and the English National Curriculum, HQP students will develop native or near-native level Chinese and international standard English. Their academic strengths will ensure advantaged placement at all of the leading schools in Hong Kong and beyond.” — Sophie Che, HQP Chinese Principal

“At Shrewsbury International School Hong Kong, the Hanqing Bilingual Pathway enhances cognitive abilities and language proficiency, fostering character growth and problem-solving skills. Our dual pathway approach offers a world-class education, blending the best of English National Curriculum and Chinese National Curriculum.” — Dr. Lu, HQP Curriculum Director



Curriculum Highlights

The HQP curriculum features several key elements that set it apart:

- **Bilingual Integration:** A 50-50 daily balance of English and Chinese instruction, including Chinese Mathematics as part of the curriculum.
- **Cultural Cultivation:** Students will engage in rich linguistic and cultural experiences that bridge Chinese and Western cultures.
- **Academically Rigorous:** The curriculum is based on the UK Early Years framework and the English National Curriculum, blending the best of English National Curriculum and Chinese National Curriculum, ensuring a high standard of education.
- **Legacy of Success:** Inspired by over 470 years of Shrewsbury heritage, the programme draws upon a wealth of experience and tradition.

Commitment to Excellence

“The imminent launch of a tailored dual language programme speaks directly of an institutionalised commitment to refreshment, renewal and partnership with parents. Under the outstanding leadership of Sophie Che, the HQP will offer a sector leading range of opportunities and experiences. It will draw directly upon the many successes we have already enjoyed here in Hong Kong and the rich history available to us through connection with Shrewsbury School, founded by Royal Charter in 1552.” — Ben Keeling, Founding Principal, Shrewsbury International School Hong Kong

At Shrewsbury International School Hong Kong, we believe in Inspiring Exceptional People, Outstanding Opportunities, and Academic Excellence. The Hanqing Bilingual Pathway is not merely an educational programme; it is a holistic approach to nurturing confident, articulate, and independent learners.



As we prepare to welcome our first cohort of students to the HQP, we invite parents to explore the unique benefits this programme offers. By choosing the Hanqing Bilingual Pathway, you are investing in your child's future, providing them with the tools they need to succeed in an increasingly interconnected world.

For more information about the Hanqing Bilingual Pathway and to learn how your child can be part of this exceptional educational experience, please register for our Campus Tour. You will have the opportunity to meet our Principals, and children are also welcome to participate in our Taster Session alongside their parents. For details, please contact our admissions team at admissions@shrewsbury.edu.hk. Experience the difference that a world-class bilingual education can make!

Shrewsbury International School Hong Kong

10 Shek Kok Road, Tseung Kwan O

Tel: 2480 1500

Email: admissions@shrewsbury.edu.hk

Website: www.shrewsbury.edu.hk





A unique educational experience that shapes future leaders

Christian Alliance International School (CAIS) is dedicated to shaping students into holistic individuals through its diverse curriculum combined with a nurturing environment.

With its spacious and well-equipped campus, CAIS offers diversified options in its program of studies and extracurricular activities. The Academic Building has over 70 classrooms, a lecture hall, art room, multi-purpose areas, and a library – it is a place that fosters learning and a sense of belonging.

In the Amenities Building, students can explore their interests in athletics and the arts. Throughout the year, students display remarkable sportsmanship in inter-school and overseas tournaments, garnering not only titles and medals, but also developing skills and traits such as determination and perseverance that will help students succeed in life. This year, the school's Aquatic Centre is set to open and allow students the many benefits of swimming lessons and water sports on campus.

In academics, CAIS offers three education pathways for its students, including the Alberta (Canada) curriculum, International Baccalaureate Diploma Programme (IBDP), and Advanced Placement courses. Students are able to choose the curriculum that builds on their strengths and help them become effective lifelong learners.

Provincial Achievement Tests (PATs) are administered by Alberta Education every year to Grade 6 and 9 students studying the Alberta curriculum globally. The results of these standardized tests reflect if students are learning what they are expected to learn at their respective levels regardless of geographic location. In 2024, the PAT6 and PAT9 test results released indicate that CAIS students either outperformed or matched the performance of Alberta students globally in all subjects, including English Language Arts, Mathematics, Science, and Social Studies.

For Grade 12, CAIS students achieved outstanding results in the 2024 Alberta Diploma Exam results, surpassing the exam scores of



Alberta Diploma students globally. The academic results of CAIS students have gained recognition from universities worldwide, with close to 120 universities and institutions extending offers to the 2024 cohort.

Equally notable is that CAIS has been awarded Tier 4 status by Alberta Education, the highest level of accreditation and endorsement an Alberta international school can receive. Currently only two other international schools have received Tier 4 status globally.

A core mission of CAIS is to offer students a transformative educational experience, cultivating well-rounded individuals who not only excel academically but also possess the skills and qualities of future leaders.

Christian Alliance International School

33 King Lam Street, Lai Chi Kok, Kowloon
Tel: 3699 3862 / 3699 3863 / 3699 3865
Email: admissions@caisbv.edu.hk
Website: www.caisbv.edu.hk
Facebook: @cais.hk
Instagram: @caisbv



READY FOR THE FUTURE

Prepared for Life

Application Period for 2025/2026 Entry

Preparatory to Grade 1: Sept 1 to Oct 31, 2024

Grade 2 to 12 (Alberta Curriculum): Sept 1 to Dec 13, 2024

Grade 11 (IB Diploma Programme): Rolling Admissions

33 King Lam Street, Lai Chi Kok, Kowloon, Hong Kong
(852) 3699 3862, 3699 3863, 3699 3865
admissions@caisbv.edu.hk



www.caisbv.edu.hk



Our Prospectus

Accreditations:



Advanced Placement® and AP® are registered trademarks of the College Board and the National Merit Scholarship Corporation, which were not involved in the production of, and do not endorse, this publication.



The German Approach - A Bilingual Education

Benefitting from a network of over 135 German Schools Abroad, German Swiss International School (GSIS) is a leading dual-language institution in Hong Kong that has offered through-train education from Kindergarten to Secondary since 1969. Delivering a unique multicultural experience, GSIS is steadfast in pursuing its educational goals and continually evolving to meet the changing needs of 21st century learners. With two successful streams, both curriculums present globally recognised diplomas - the German International Stream (GIS) with the German International Abitur Diploma (DIA) and the English International Stream (EIS) with the IGCSE / International Baccalaureate (IB).

GERMAN INTERNATIONAL STREAM (GIS) & DIA DIPLOMA

Open to all nationalities, the core of the German International Stream is delivering a culturally rich bilingual education through a well-rounded curriculum of languages, sciences, mathematics, and arts. Graduates receive the German International Abitur Diploma (DIA) which is accepted at prestigious universities all over the world and is seen as an advantage over other common school qualifications. Those who choose to continue their academic career in Germany, an economic powerhouse, are given an education resident visa and tuition is offered gratuitously by the German government.

GIS KINDERGARTEN

The German approach promotes a holistic, child-centred journey where each child is unique and understands at their own pace. With an emphasis on learning through play, children ages 3-5 years old are taught through rhymes, songs, movement and colourful games in German and English.

GIS PRIMARY - CLIPPY PROGRAMME

The Cultural and Language Integration Programme in Primary Years (CLIPPY) presents an immersive German language curriculum for children 6-8 years old. It supports



children with no prior knowledge of German with personalised language lessons and fully integrate them into a nurturing community. It delivers an outstanding education that transforms lives, as well as minds, and develops critical thinking.

GIS SECONDARY - FAST TRACK PROGRAMME

For older children ages 11-12 years old, the Fast Track programme is an accelerated German-learning experience designed for Secondary international students where German language courses are integrated into the interdisciplinary curriculum, alongside German speaking students. They are cultivated into a language-rich learning environment and become inquisitive, open minded, and independent thinkers.

BENEFITS:

- Bilingual education in German & English
- Open to all passport holders where no prior knowledge of German is required for CLIPPY and Fast Track programme
- German International Abitur diploma (DIA) accepted at top universities worldwide including Europe, U.K., U.S.A. and Canada
- Education resident visa and tuition offered gratuitously at German universities
- Intimate class size to provide the best learning atmosphere

German Swiss International School

Peak Campus (Upper Primary and Secondary)

11 Guildford Road, The Peak

Pok Fu Lam Campus (Kindergarten and Lower Primary)

162 Pok Fu Lam Road, Pok Fu Lam

Tel: +852 2180 0510

Email: admissions@gsis.edu.hk

Website: www.gsis.edu.hk



CHOICE OF CURRICULUM

GERMAN INTERNATIONAL STREAM (GIS)

No prior knowledge of German is required for specific age groups.

German is the primary language of instruction where some subjects are taught in English in senior years.

ENGLISH INTERNATIONAL STREAM (EIS)

All classes are taught in English. German is included in the curriculum as a compulsory language up to IGCSE.

German International Abitur (DIA)
Ministry of Education of the Federal Republic of Germany



International Baccalaureate Diploma Programme (IBDP)
International Baccalaureate Organisation
(Non-profit Educational Organisation)

Required Across K11-12
Higher Level

German, English, Mathematics
Standard Level

7 elective subjects: History, Geography, Biology, Chemistry, Physics, French, Mandarin, Music, Art, Ethics, Religion, Physical Education
(Some subjects are taught in English, some bilingually in German and English)



Required Across Year 12-13
Higher Level and Standard Level
Choice of 6 subjects, 3 Higher Level & 3 Standard Level: Language & Literature, Language Acquisition, Individuals & Societies (Social Sciences), Sciences, Mathematics, The Arts
Additional Requirement: Theory of Knowledge Course, Extended Essay, Creativity, Activity and Service Projects

Accepted by prestigious universities worldwide
German universities provide education visa residency & tuition offered gratuitously by German government



Accepted by prestigious universities worldwide, including Germany

Universities may offer credit for successful exam results & national awards



Universities may offer up to a year's worth of credit for IB classes, depending on their specific policies

5 exams (3 written & 2 oral)
50% must be conducted in German



3 papers for Higher Level & 2 for each Standard Level subject
Language exams are written & oral



Discover more

Advocating for Inquiry-Based Learning from Age Five



Stamford American School in Ho Man Tin provides an exceptional American education, with Ms. Rae Lang, an early childhood and elementary education veteran, stepping in as Principal of the Elementary School in 2023. Her approach emphasizes inquiry-based learning, fostering an environment where students can thrive from an early age.

Building Confidence Through Mistakes

The elementary program at Stamford utilizes Columbia University's "Reading and Writing Workshop" to enhance reading and writing skills. This innovative method moves away from traditional teaching by employing small group "mini-lessons" tailored to individual learning needs. It encourages independent learning and the acceptance of mistakes as learning opportunities, helping students develop confidence and resilience.

Teachers adapt their guidance based on student levels, facilitating independent and collaborative work. Students present their learning outcomes and challenges at the end of each unit, allowing teachers to assess their progress and tailor future materials and assignments, preparing them for middle school.

Autonomous Learning and Flexible Assessment

Stamford's holistic educational approach spans from Pre-primary to grade 12, strongly emphasizing personal goal-setting alongside academic skills. For instance, 5th graders select a UN Sustainable Development Goal for their final project, integrating diverse subjects like STEMinn, creativity, and humanities. This project-based assessment model shifts focus from traditional exams to collaborative reports and daily observations, alleviating exam pressure while broadening students' perspectives.

Prioritizing Social-Emotional Learning

Research shows that emotionally healthy students are more engaged and perform better academically. Stamford prioritizes emotional well-being, with Ms. Lang advocating for a nurturing environment that excites students about learning and fosters peer relationships. The school employs specialized counselors and the award-winning "Second Step Social Program" for weekly social-emotional learning (SEL), enhancing students' Adversity Quotient (AQ) and encouraging them to face challenges positively.

Students build empathy, problem-solving skills, and self-management through interactive courses and role-playing activities. Stamford also collaborates with charities for fundraising events, providing practical experiences that expose students to diverse cultures and inspire self-improvement. This comprehensive approach cultivates compassionate, confident learners ready to tackle challenges and contribute positively to society.

Stamford American School Hong Kong

25 Man Fuk Road, Ho Man Tin

Tel: 2500 8688

Email: admissions@sais.edu.hk

Website: www.sais.edu.hk



2025/26 APPLICATIONS OPEN APPLY NOW FOR PRIORITY

Stamford offers an inspiring world of international education for students aged 5 to 18 using an inquiry-based learning approach combined with rigorous American academic standards. Graduates receive an American diploma and the option of the IB Diploma, both offering access to top universities worldwide.

Come and visit us to find out how our innovation approach will inspire your child.



Apply Now!

Stamford American School Hong Kong

25 Man Fuk Road, Ho Man Tin, Kowloon, Hong Kong

+852 2500 8688

admissions@sais.edu.hk

www.sais.edu.hk





Developing Student Agency



are opportunities to grow and improve, and failures are just stepping stones in the learning process. "I very much appreciate the school's approach to help my daughter learn and develop her growth mindset. They created an open platform for students to discuss topics like how to be a good learner in class, and listening to my daughter's ideas on how to improve recess play environment," says a Year 3 parent.

YMCA Christian Academy (YCA) is a unique community-oriented private primary school on Hong Kong Island offering a vibrant, future-ready curriculum. Following the International Primary Curriculum (IPC), students learn to ask research questions, conduct observations, investigate, understand, record and consolidate and present their ideas. They learn to be student agents and voice out their opinions and ideas.

An example would be their Year 5 and 6 students, they wanted to help those in need, and so, they came up with an idea for a Wacky Hair Day fundraising event. They wrote a letter to the Principal to convince him that it would be a fun idea and that they could give the money to those in need. Wacky Hair Day is now an annual event at YCA. Similarly, this year, the Year 6 class started their own student company called Paper Projects, where they design, create and sell their own creations and donate all the proceeds to a local charity.

Importance of a Growth Mindset

YCA fosters a growth mindset - a positive mindset is a superpower! They help students understand that well-directed effort moves them closer to their goals. Students learn to reflect, listen to feedback, and improve on their next try. They learn that challenges



Strengthening Student Transitions

Transition from kindergarten to primary can be huge for a child. YCA believes that if the transition is well-planned, it will help the child develop confidence and acquire skills to manage future changes in their lives. Every year, they host 4 Experience Afternoons where they invite upcoming Year 1 and 2 to their school. These events allow new students to familiarise themselves with the teachers and environment. They develop confidence and familiarity with the school before their first day of school, and so, for the past three years, new students came to school confidently and no tears were shed. Additionally, they also offer transition services to students graduating from YCA. Not only do they provide information regarding secondary school options, but they also host secondary schools coffee mornings, interview workshops, Principal 1-1 meetings and field trips to partnered secondary schools. As a school with a strong focus on wellbeing, we go above and beyond to support our families and students throughout their journey at YCA.



YMCA Christian Academy

70 Bridges Street, Sheung Wan

Tel: 2537 2552

Email: admission@yca.edu.hk

Website: yca.edu.hk



Sign Up Now for YCA's upcoming event

Open Afternoon

21 Nov 2024 | 12:45pm

See the school in action! Our Open Afternoons are held during school hours, and so, you will be able to visit key classrooms, hear our students present to you and experience the learning environment at YCA. Pre-booking is required.



*Please note that one ticket per family.

We are a unique community-oriented and nurturing Christian primary school with a vibrant and future-ready international curriculum.

- Small class size
- Inquiry-based learning
- Differentiated learning
- Daily Chinese classes
- SEN and EAL support



APPLY NOW for Year 1 - Year 6

70 Bridges Street, Sheung Wan | yca.edu.hk | admission@yca.edu.hk





Directory



ABC Pathways International Kindergarten

Tai Koo Campus
G/F, Block 8&9, Kornhill Garden,
1124 King's Road, Quarry Bay
Tel: 2110 1211
Email: enquiry.tk@abcpathways.edu.hk

Whampoa Campus
Shop LG01, 01A & 01B on LG/F, and
UG45A-C on UG/F, The Laguna Mall,
8 Laguna Verde Avenue, Hung Hom
Tel: 2110 9993
Email: enquiry.wp@abcpathways.edu.hk
Website: abcpathways.edu.hk
Year founded: 2014
Curriculum: International

American International School

125 Waterloo Road, Kowloon Tong, Hong Kong
Tel: 2336 3812
Email: admissions@ais.edu.hk
Website: www.ais.edu.hk
Year founded: 1986
Curriculum: US Common Core State Standards
and AP Courses

American School Hong Kong

6 Ma Chung Road, Tai Po, N.T.
Tel: 3919 4111
Email: admissions@ashk.edu.hk
Website: www.ashk.edu.hk
Year founded: 2016
Curriculum: US, IB



**Anchors Academy (Primary School)
Anchors Academy Affiliated International
Kindergarten cum Nursery**

1 Ko Po Path, Yuen Long, Kam Tin North,
Yuen Long, New Territories
Primary
Tel: 3860 5605
Email: AAPsinfo@anchorsacademy.edu.hk
Kindergarten cum Nursery
Tel: 3860 5655
Email: AAKGinfo@anchorsacademy.edu.hk
Website: www.anchorsacademy.edu.hk
Year Founded: 2023



Anfield School (Primary), Tai Wai

No.1, Lung Pak Street, Tai Wai, Statin, N.T.
Tel: 2692 8823
Email: enquiry@anfield.edu.hk

**Anfield International Kindergarten and
Nursery, Whampoa**

Level 2, Phase 1, 8 Laguna Verde Ave, Hung Hom.
Tel: 2766 3882
Email: enquiry@anfield.edu.hk

**Anfield International Kindergarten,
Kowloon Tong**

5 Cumberland Road, Kowloon Tong, Hong Kong
Tel: 2794 3668
Email: enquiry@anfield.edu.hk

**Anfield St. Bosco Koon Ying School,
Yuen Long**

St. Bosco Koon Ying School Castle Peak Road, Mai
Po, Yuen Long
Tel: 3582 8298
Email: enquiry@anfield.edu.hk
Year founded: 1999



Austin School

Austin Tower, 152 Austin Road, Tsim Sha Tsui,
Kowloon, Hong Kong
Tel: (852) 2711 1136
Email: admissions@austinschool.edu.hk
Website: www.austinschool.edu.hk

**Australian International School
Hong Kong**

3A Norfolk Road, Kowloon Tong
Tel: 2304 6078
Email: info@aishk.edu.hk
Website: www.aishk.edu.hk
Year founded: 1995
Curriculum: Australian National Curriculum, IBDP

Baumhaus Wan Chai

1/F Kar Yau Building,
36-44 Queen's Road East, Wan Chai
Tel: 2321 5898
Website: www.baumhaus.com.hk



Bloom KKCA Academy

7 Pui Tak Street, Shek Kip Mei
Tel: 2311 2268
Email: admissions@bloom.edu.hk
Website: www.bloom.edu.hk

Saint Too Bloom Academy

15 Tong Yam Street, Tai Hang Tung
Tel: 2216 5200
Email: admission@bloom.edu.hk
Website: www.secondary.bloom.edu.hk



Blooming Buds Preschool

Unit 7, 1/F, Island Crest, 8 First Street,
Sai Ying Pun, Hong Kong
Tel: 2887 9921
Email: enquiry@bloomingbuds.com.hk
Website: www.bloomingbuds.com.hk
Year founded: 2012
Curriculum: Reggio Emilia Approach and
the Creative Curriculum

**Box Hill (HK) International
Kindergarten & Pre-school**

Ma On Shan Campus
G/F, Tower 10, Phase 1, Vista Paradiso,
No. 2 Hang Ming Street, Ma On Shan
Tel: 2750 6323
Email: mos@boxhill.edu.hk
Fo Tan Campus
No. 327 on Podium of Jubilee Square,
2-18 Lok King Street, Fo Tan, New Territories
Tel: 2688 2161
Email: ft@boxhill.edu.hk
Tseung Kwan O Campus
Shop 2 & 3, Level G/F & 1/F, Mount Verdant,
48 Chui Ling Road, Tseung Kwan O, New Territories
Tel: 2623 0023
Email: tko@boxhill.edu.hk
Website: www.boxhill.edu.hk
Year founded: 2004
Curriculum: Early Years Foundation Stage

Brightland International Kindergarten

Shop 1, Wing A, Block A, Tak Nga Court,
2 Hiu Wan Road, Tai Po
Tel: 2651 3311
Email: info@brightland.edu.hk
Website: brightland.edu.hk
Year Founded: 2016

**Canadian International School
of Hong Kong**

Aberdeen Campus
36 Nam Long Shan Road, Aberdeen
The Southside Campus
Shop Units G21-24, G/F, THE SOUTHSIDE,
11 Heung Yip Road, Wong Chuk Hang, Hong Kong
Tel: 2525 7088
Email: schoolinfo@cdnis.edu.hk
Website: www.cdnis.edu.hk
Year founded: 1991
Curriculum: IB and OSSD

California School

3/F, Front Block, Lung Ma Building,
550 Nathan Road, Yau Ma Tei
Tel: 2388 9844 / 9822 7549
Email: info@californiaschool.edu.hk
Website: www.californiaschool.edu.hk
Year founded: 1992
Curriculum: IGCSE, A-Levels

Cannan Kindergarten (Whampoa Garden)

Portion of G/F, Commercial Podium,
Site 10, Whampoa Garden, Hung Hom
Tel: 2330 3336
Website: www.cannan.edu.hk
Year Founded: 1997

Carmel School Hong Kong

Elsa High School Campus
460 Shau Kei Wan Road, Shau Kei Wan, Hong Kong
Tel: 3665 5388
Carmel Elementary Campus
10 Borrett Road, Mid-Levels, Hong Kong
Tel: 2964 1600
Holly Rofé Early Learning Centre
70 Robinson Road, Mid-Levels, Hong Kong
Tel: 2249 7600
Email: admissions@carmel.edu.hk
Website: www.carmel.edu.hk
Year founded: 1991

Cherish English School & Kindergarten

Shop KG01, G/F & M/F, Sai Wan Estate,
East Terrace, Kennedy Town
Tel: 2855 0080
Website: www.cherish.edu.hk
Year Founded: 1988

Chinese Academy

77 Caroline Hill Road, Causeway Bay, Hong Kong
Tel: 2499 8000
Email: enquiry@caps.edu.hk
Website: www.caps.edu.hk
Year founded: 2017
Curriculum: Primary: Bilingual Immersion in
English & Chinese (Putonghua);
Secondary: IB MYP, IB DP

Chinese International School

1 Hau Yuen Path, Braemar Hill, North Point
Tel: 2510 7288
Email: cis_info@cis.edu.hk
Website: www.cis.edu.hk
Year founded: 1983
Curriculum: Primary: balanced and integrated
dual language curriculum in both English and
Chinese; Secondary: IBMYP & IBDP. In Year 10,
students study the IB MYP in our satellite campus in
Hangzhou (CIS Hangzhou)

Christian Alliance International School

33 King Lam Street, Lai Chi Kok, Kowloon
Tel: 3699 3862 / 3699 3863 / 3699 3865
Email: admissions@caisbv.edu.hk
Website: www.caisbv.edu.hk
Facebook: @cais.hk
Instagram: @caisbv



**Christian Alliance P.C. Lau Memorial
International School**

2 Fu Ning Street, Kowloon, Hong Kong
Tel: 2713 3733
Email: info@capcl.edu.hk
Website: www.capcl.edu.hk
Curriculum: Canada's Alberta Curriculum



Concordia International School

68 Begonia Road, Yau Yat Chuen
Tel: 2789 9890
Email: office@concordiaintl.edu.hk
Website: www.cihs.edu.hk
Year founded: 1990
Curriculum: North American

Creative Kindergarten

G/F, 6 Rutland Quadrant, Kowloon Tong
Tel: 2336 1139
Website: www.creative.edu.hk
Year Founded: 1984

Creative School Continuum

Creative Primary School's Kindergarten,
Creative Primary School
2A Oxford Road, Kowloon Tong, Kowloon, HK
Tel: 2336 1212 / 2336 0266
Email: cps@creativeprisch.edu.hk
Website: www.creativeprisch.edu.hk
Creative Secondary School
3 Pung Loi Road, Tseung Kwan O, Sai Kung
Tel: 2336 0233
Email: admin@css.edu.hk
Website: www.ccs.edu.hk
Year founded: 2006
Curriculum: HKDSE, IBMYP, IBDP

Dalton School Hong Kong

1/F & 2/F, Imperial Cullinan,
10 Hoi Fai Road, Kowloon
Tel: 3612 4660
Email: info@dshk.edu.hk
Website: www.dshk.edu.hk
Year founded: 2017
Curriculum: US Common Core Standards Tsinghua Chinese

David Exodus Kindergarten

Upper Ground Podium, Block 4,
Julimount Garden, Tai Wai, Shatin, N.T.
Tel: 2699 0100
Website: www.dek.edu.hk
Year founded: 1989
Curriculum: Own

Deborah Educational Institute:

Deborah International Pre-school /
Play school (Tseung Kwan O)
Kindergarten Tower, Bauhinia Garden,
11 Tong Chun Street, Tseung Kwan O
Tel: 3403 4393
Curriculum: International
Deborah International Pre-school / Play-school
(Hung Hom)
1/F, Site 2 and G/F, Site 7,
Whampoa Garden, Hung Hom, Kowloon
Tel: 2362 8379 (Site 2) / 2774 1669 (Site 7)
Curriculum: International / Japanese International

Delia Memorial School (Glee Path)

1-3 Glee Path, Mei Foo Sun Chuen, Kowloon
Tel: 2741 5239
Email: gp@deliagroup.edu.hk
Website: www.deliagg.edu.hk
Curriculum: HKDSE, IBDP

DSC International School

5-7, Tai Fung Avenue, Taikoo Shing
Tel: 3658 0400
Email: admissions@dsc.edu.hk
Website: www.dsc.edu.hk
Year founded: 1987
Curriculum: Ontario Curriculum / Alberta
Curriculum, Canada

**Diocesan Boys School Primary Division &
Diocesan Boys School**

131 Argyle Street, Mongkok, Kowloon
Tel: 2711 5191
Email: dbsadmin@dbs.edu.hk
Website: www.dbs.edu.hk
Year founded: 1869
Curriculum: HKDSE, IBDP

Diocesan Girls' School

1 Jordan Road, Kowloon
Tel: 2277 9100
Email: info@dgs.edu.hk
Website: www.dgs.edu.hk
Year founded: 1860
Curriculum: HKDSE, A-Levels

Discovery Bay International School

Discovery Bay, Lantau Island
Tel: 3987 7331
Email: admissions@dbis.edu.hk
Website: www.dbis.edu.hk
Year founded: 1983
Curriculum: British National Curriculum and
International Primary Curriculum



**Discovery Mind Kindergarten/
International Play Centre**

Discovery Bay Campus
401, Marina Commercial Centre, G/F,
2-8 Coastline Villa, Peninsula Village, Discovery Bay
Tel: 2987 8088
Email: dmk@discoverymind.edu.hk
Tung Chung Campus
G/F, Seaview Crescent,
No. 8 Waterfront Road, Tung Chung
Tel: 2987 8070
Email: dmtc@discoverymind.edu.hk

Discovery Mind Primary School

Discovery Bay Campus
1/F, Shop 102, 92 Siena Avenue,
North Plaza, Discovery Bay
Tel: 2914 2202
Email: admission_db@discoverymind.edu.hk
Tung Chung Campus
G/F, Shop A-D Seaview Crescent,
No. 8 Waterfront Road, Tung Chung
Tel: 2915 0666
Email: admission_tc@discoverymind.edu.hk
Website: www.discoverymind.edu.hk
Year founded: 2012
Curriculum: IPC

Discovery Montessori Academy

Block 1, 92 Siena Ave, Discovery Bay,
Lantau Island, Hong Kong
Tel: 2812 9206
Email: primary@dms.edu.hk
Website: www.dms.edu.hk
Year founded: 2015
Curriculum: Montessori

Discovery Montessori School

Discovery Bay Campus
Shop 101, 1/F, 92 Siena Avenue,
Discovery Bay, Lantau Island, Hong Kong
Tel: 2987 1201
Email: enquiry@discoverymontessori.info
Central Campus
3/F, Mandarin Building, 34-43 Bonham Strand,
Central, Hong Kong
Tel: 2850 8006
Email: enquiry@dms.edu.hk
Website: www.dms.edu.hk
Year founded: 2010
Curriculum: Montessori

EIS International Preschool

No.1 San Wai Tsuen, San Tin, Yuen Long
Tel: 2889 7680 / 2889 7681
Fax: 2889 7331
Email: info@eminent-education.org
Website: www.emient-education.org
IG/Facebook: theeminenteducation
Year founded: 2020
Curriculum: EYFS, Nature-based Preschool



English Schools Foundation

25/F, 1063 King's Road, Quarry Bay, Hong Kong
Tel: 3762 2411
Email: info@esfcentre.edu.hk
Website: www.esf.edu.hk
Year founded: 1967



ESF Abacus International Kindergarten

1A Mang Kung Uk Road, Clearwater Bay
Tel: 2719 5712
Email: kinder@abacus.edu.hk
Website: www.abacus.edu.hk
Year founded: 2002
School Type: Private
Curriculum: IB Primary Years Programme

ESF Abacus International Kindergarten

1A Mang Kung Uk Road, Clearwater Bay
Tel: 2719 5712
Email: kinder@abacus.edu.hk
Website: www.abacus.edu.hk
Year founded: 2002
School Type: Private
Curriculum: IB Primary Years Programme

ESF Beacon Hill School

23 Ede Road, Kowloon Tong
Tel: 2336 5221
Email: bhs@bhs.edu.hk
Website: www.beaconhill.edu.hk
Year founded: 1967
School Type: ESF
Curriculum: IB Primary Years Programme

ESF Bradbury School

43C Stubbs Road, Happy Vally
Tel: 2574 8249
Email: enquiries@bradbury.edu.hk
Website: www.bradbury.edu.hk
Year founded: 1992
School Type: ESF
Curriculum: IB Primary Years Programme

ESF Clearwater Bay School

DD 229, Lot 235, Clearwater Bay Road, Clearwater Bay
Tel: 2358 3221
Email: info@cwbs.edu.hk
Website: www.cwbs.edu.hk
Year founded: 1980
School Type: ESF
Curriculum: IB Primary Years Programme

ESF Discovery College

38 Siena Avenue, Discovery Bay, Lantau Island
Tel: 3969 1000
Email: office@dc.edu.hk
Website: www.discovery.edu.hk
Year founded: 2007
School Type: Private
Curriculum: IB Primary Years Programme, IB Middle Years Programme, IB Diploma

ESF Glenealy School

7 Hornsey Road, Mid Levels
Tel: 2522 1919
Email: enquiry@glenealy.edu.hk
Website: www.glenealy.edu.hk
Year founded: 1959
School Type: ESF
Curriculum: IB Primary Years Programme

ESF Hillside International Kindergarten

43B Stubbs Road, Mid-Levels East
Tel: 2540 0066
Email: kinder@hillside.edu.hk
Website: www.hillside.edu.hk
Year founded: 1999
School Type: Private
Curriculum: IB Primary Years Programme

ESF Island School

20 Borrett Road, Mid Levels
(permanent campus currently under redevelopment)
Temporary campuses:
Island School Sha Tin Wai (Years 7, 8, 12, 13)
Pok Hong Estate, Area 5A, Sha Tin, New Territories
Island School Tai Wai (Years 9, 10, 11)
Estate Secondary School No. 2, Sun Chui Estate, Sha Tin
Tel: 2524 7135
Email: school@online.island.edu.hk
Website: www.island.edu.hk
Year founded: 1967
School Type: ESF
Curriculum: GCSE/IGCSEs, IB Diploma, Applied Learning Programme (BTEC qualifications)

ESF Jockey Club Sarah Roe School

2B Tin Kwong Road, Homantin
Tel: 2761 9893
Email: info@jcsrs.edu.hk
Website: www.jcsrs.edu.hk
Year founded: 1985
School Type: ESF
Curriculum: Primary Learning Programme, ASDAN Award Programme, Transition Challenge Programme, Towards Independence Challenge

ESF Kennedy School

19 Sha Wan Drive, Pokfulam
Tel: 2579 5600
Email: admissions@kennedy.edu.hk
Website: www.kennedy.edu.hk
Year founded: 1961
School Type: ESF
Curriculum: IB Primary Years

ESF King George V School

2 Tin Kwong Road, Homantin
Tel: 2711 3029
Email: office@kgv.edu.hk
Website: www.kgv.edu.hk
Year founded: 1902
School Type: ESF
Curriculum: GCSE/IGCSEs, IB Diploma, Applied Learning Programme (BTEC qualifications)

ESF Kowloon Junior School

20 Perth Street, Homantin, Kowloon, Hong Kong
Tel: 3765 8700
Email: office@kjs.edu.hk
Website: www.kjs.edu.hk
Year founded: 1902
School Type: ESF
Curriculum: IB Primary Years Programme

ESF Peak School

20 Plunketts Road, The Peak
Tel: 2849 7211
Email: office@peakschool.net
Website: www.ps.edu.hk
Year founded: 1911
School Type: ESF
Curriculum: IB Primary Years Programme

ESF Quarry Bay School

6 Hau Yuen Path, Braemar Hill, North Point
Tel: 2566 4242
Email: office@qbs.edu.hk
Website: www.qbs.edu.hk
Year founded: 1926
School Type: ESF
Curriculum: IB Primary Years Programme

ESF Sha Tin College

3 Lai Wo Lane, Fo Tan, Sha Tin
Tel: 2699 1811
Email: info@shatincollege.edu.hk
Website: www.shatincollege.edu.hk
Year founded: 1982
School Type: ESF
Curriculum: IBGCSE, IB Diploma

ESF Sha Tin Junior School

3A Lai Wo Lane, Fo Tan, Sha Tin, New Territories
Tel: 2692 2721
Email: info@sjs.esf.edu.hk
Website: www.sjs.edu.hk
Year founded: 1988
School Type: ESF
Curriculum: IB Primary Years Programme

ESF South Island School

50 Nam Fung Road, Aberdeen, Hong Kong
Tel: 2555 9313
Email: sis@sis.edu.hk
Website: www.sis.edu.hk
Year founded: 1977
School Type: ESF
Curriculum: GCSE/IGCSEs, IB Diploma, IB Career-related Programme, Applied Learning Programme (BTEC qualifications)

ESF Tsing Yi International Kindergarten

Maritime Square, 33 Tsing King Road, Tsing Yi
Tel: 2436 3355
Email: admissions@tyk.edu.hk
Website: www.esf.edu.hk
Year founded: 1999
School Type: Private
Curriculum: IB Primary Years Programme

ESF Tung Chung International Kindergarten

1/F, Commercial Accommodation, The Visionary,
1 Ying Hong Street, Tung Chung, Lantau, N.T.
Tel: 3742 3500
Email: kinder@tc.esf.org.hk
Website: www.tck.edu.hk
Year founded: 2016
School Type: Private
Curriculum: IB Primary Years Programme

ESF West Island School

250 Victoria Road, Pok Fu Lam, Hong Kong
Tel: 2819 1962
Email: wis@wis.edu.hk
Website: www.wis.edu.hk
Year founded: 1991
School Type: ESF
Curriculum: GCSE/IGCSEs, IB Diploma, Applied Learning Programme (BTEC qualifications)

ESF Wu Kai Sha International Kindergarten

Level 1, Lake Silver Tower, 599 Sai Sha Road, Ma On Shan
Tel: 2435 5291
Email: kinder@wksk.edu.hk
Website: www.wksk.edu.hk
Year founded: 2009
School Type: Private
Curriculum: IB Primary Years Programme

EtonHouse International Pre-School

LG/F Kindergarten, Mayfair By The Sea I,
23 Fo Chun Road, Tai Po
Tel: 2780 5700
Email: enquiry@etonhouse.com.hk
Website: www.etonhouse.com.hk
Year founded: 1995
Curriculum: Inquiry based Reggio Emilia inspired curriculum

Fairchild Junior Academy

22/F, Park Commercial Centre,
180 Tung Lo Wan Road, Tin Hau, Hong Kong
Tel: 2898 1611
Email: info@fairchild.academy
Website: www.fairchild.academy
Year founded: 2016
Curriculum: Canadian Early Learning Framework



Fairchild Kindergarten

G/F & 1/F, Kong Chian Tower, Block 1,
351 Des Voeux Road West, Sai Ying Pun, Hong Kong
Tel: 2803 2638
Email: info@fairchild.edu.hk
Website: www.fairchild.edu.hk
Year founded: 2017
Curriculum: Canadian Early Learning Framework and Hong Kong Kindergarten Education Curriculum Guide

Forest House Waldorf School

Commercial Development Floral Villas,
18 Tso Wo Road, Sai Kung
Tel: 2792 6055
Email: info@foresthous.edu.hk
Website: www.waldorf.edu.hk
Year founded: 2014
Curriculum: Waldorf

French International School

Blue Pool Road Campus
165 Blue Pool Road, Happy Valley
Chai Wan Campus
1 Cheung Man Road, Chai Wan, Hong Kong
Jardine's Lookout Campus
34 Price Road, Jardine's Lookout, Hong Kong
Tseung Kwan O Campus
28 Tong Yin Street, Tseung Kwan O, N.T.
Tel: 2577 6217
Email: info@lfis.edu.hk
Website: www.fis.edu.hk
Year founded: 1963
Curriculum: English National Curriculum to IGCSE then IBDP; French National Curriculum

Funful Group of Schools Kindergarten Section

No.20 Durham Road, Kowloon Tong, Hong Kong
Tel: 2337 6883
Email: kln20funful@yahoo.com.hk
Website: www.kindergarten.funful.hk/
Primary Section
1 Cumberland Road, Kowloon Tong, Hong Kong
Tel: 2338 3434
Email: office@frris.edu.hk
Website: www.frris.edu.hk

Galilee International School – Kindergarten & Nursery

1/F Peace Garden, 2 Peace Avenue, Ho Man Tin, Kowloon
Tel: 2390 3000
Email: gis@gis.edu.hk
Website: www.gis.edu.hk
Year founded: 2014
Curriculum: International Baccalaureate (Primary Years Programme)

Garden House Waldorf School

G/F, Silverstrand Shopping Centre,
7 Silverstrand Beach Road, Clearwater Bay
Tel: 2358 1177
Email: info@gardenhouse.edu.hk
Website: www.gardenhouse.edu.hk
Year founded: 2008
Curriculum: Waldorf

German Swiss International School

Main Campus (Primary & Secondary)
11 Guildford Road, The Peak
Tel: 2849 6216
Pok Fu Lam Campus (Kindergarten & Lower Primary)
162 Pok Fu Lam Road, Pok Fu Lam, Hong Kong
Tel: 2849 6217
Email: info@gsis.edu.hk
Website: www.gsis.edu.hk
Year founded: 1969
Curriculum: GSIS is a multi-language through-train school, from Kindergarten to Secondary, operating two parallel streams - the German International Stream and the English International Stream - following curricula that respectively lead to the German International Abitur Diploma and the International Baccalaureate (IB) Diploma following IGCSE examinations in Year 11
Gigamind English Primary School
Block A, 9 Tin Lung Road, Phase 6, Maywood Court, Kingswood Villas, Tin Shui Wai, N.T.
Tel: 2446 9883
Email: info@gigamind.edu.hk



Gigamind Kindergarten & Children's House

Block B, 9 Tin Lung Road, Phase 6, Maywood Court, Kingswood Villas, Tin Shui Wai, N.T.
Tel: 2446 9210
Email: kginfo@gigamind.edu.hk
Website: www.gigamind.edu.hk
Year founded: 2001
Curriculum: Own

Good Time International Play School & Kindergarten

L4 Block C & D, Shatin Plaza, Shatin, New Territories
Tel: 2601 3278
Whatsapp: 9445 5085
Email: info@deikindergarten.org
Website: www.goodtimeie.edu.hk

Grace Garden International Nursery and Kindergarten

Shop GA 12B - 14, G/F, Site A, 55 Tai Hong Street, Lei King Wan, Sai Wan Ho (MTR Station Exit A)
Tel: 2702 9778
Whatsapp: 6100 8339
Email: enquiry@gracegarden.edu.hk
Website: www.gracegarden.edu.hk
Year founded: 2015
Curriculum: Early Years Foundation Stage

Greenfield English (International) Kindergarten

The Long Beach
 Unit 1 Kindergarten Area UG/F, 8 Hoi Fai Road, The Long Beach, West Kowloon
Tel: 3514 8081
Website: www.greenfield.edu.hk
Year Founded: 2011

Tung Chung
 Podium, 1/F, Caribbean Bazaar, Caribbean Coast, 1 Kin Tung Road, Tung Chung, Lantau Island
Tel: 2162 5538
Website: www.greenfield.edu.hk

Lohas Park
 Kindergarten Site, Hemera, Lohas Park III, Tseung Kwan O
Tel: 2246 4801
Website: www.greenfield.edu.hk
Year Founded: 2016

Tseung Kwan O
 G/F., Shop & Podium Level 1, Nan Fung Plaza, Tseung Kwan O
Tel: 2274 2238
Website: www.greenfield.edu.hk

Mont Vert
 The Kindergarten, Mont Vert, 9 Fung Yuen Road, Tai Po
Tel: 3907 0178
Website: www.greenfield.edu.hk

Ma On Shan
 Shop A1-a & 2/F, Podium, Ma On Shan Centre, Ma On Shan, New Territories
Tel: 2633 0327
Fax: 2640 4474
Website: www.greenfield.edu.hk

Guidepost Montessori

Chai Wan Campus
 Kindergarten, Harmony Garden, 9 Siu Sai Wan Rd, Chai Wan
Clearwater Bay Campus
 Level 7, Silverstrand Mart, Clear Water Bay Rd, Clear Water Bay, Sai Kung
Guidepost Family Club Causeway Bay
 G02-G03, Leighton Centre, 77 Leighton Rd, Causeway Bay
Discovery Bay Campus
 1-06, 1/F, 92 Siena Avenue, Discovery Bay North, Discovery Bay
Happy Valley Hawthorn Road Campus
 2 Hawthorn Road, Happy Valley
Happy Valley Sing Woo Road Campus
 1/F, Happy Court, 39E Sing Woo Rd, Happy Valley
Kennedy Town Campus
 1-2 Floor 554-560 Queen's Road West Sai Wan, Shek Tong Tsui
Mid-Levels Campus (opening in August 2024)
 On Fung Building, 110-118 Caine Road, Mid-Levels, Hong Kong
Pok Fu Lam Campus
 L101 Chi Fu Landmark, Chi Fu Fa Yuen, Pok Fu Lam
Repulse Bay Campus (opening in August 2024)
 2/F, 35 Beach Road Repulse Bay, Hong Kong
Sai Kung Campus (opening in August 2024)
 Shop D, G/F, Marina Cove Shopping Centre, Sai Kung, N.T., Hong Kong
Academy of Innovation Primary School
 77 Caroline Hill Road, Causeway Bay
Tel: 9126 6211
Email: admissions@guidepost.hk
Website: guidepost.hk

Hamilton Hill International Kindergarten

2/F Tang Kung Mansion, 31 Tai Koo Shing road. Tai Koo
Tel: 2567-5454
Website: www.hhik.edu.hk

Han Academy

G/F-2/F, 33-35 Wong Chuk Hang Road, Aberdeen
Tel: 3998 6300
Email: admission@hanacademy.edu.hk
Website: www.hanacademy.edu.hk
Year Founded: 2017
 Curriculum: Cambridge (Primary, Secondary, IGCSE, A Level), IBDP (candidate school)

Harrow International School Hong Kong

38 Tsing Ying Road, Tuen Mun
Tel: 2824 9099
Email: admissions@harrow.school.hk
Website: www.harrow.school.hk
Year founded: 2012
Curriculum: International

Highgate House School

2/F, 100 Peak Road, The Peak
Tel: 2849 6336
Website: www.highgatehouse.edu.hk
Year founded: 1992
Curriculum: Waldorf

HKCA Po Leung Kuk School

62 Tin Hau Temple Road, Hong Kong
Tel: 3465 8400
Email: info@plkis.edu.hk
Website: www.plkis.edu.hk
Year Founded: 2017
Curriculum: IBPYP

Hong Kong Academy

33 Wai Man Road, Sai Kung
Tel: 2655 1111
Email: admissions@hkacademy.edu.hk
Website: www.hkacademy.edu.hk
Year founded: 2000
Curriculum: IBPYP, IBMYP, IBDP



Hong Kong Adventist Academy

1111 Clear Water Bay Road, Sai Kung
Tel: 2623 0034
Email: info@hkaa.edu.hk
Website: www.hkaa.edu.hk
Year founded: 2011
Curriculum: Local curriculum with electives from the American curriculum

Hong Kong Chinese Christian Churches Union Logos Academy

Campus 1
 No. 5, Ling Kwong Street, Tseung Kwan O, N.T.
Tel: 2337 2126

Campus 11
 No. 1, Kan Hok Lane, Tseung Kwan O, N.T.
Tel: 2337 2123
Email: info@logosacademy.edu.hk
Website: www.logosacademy.edu.hk
Year founded: 2011
Curriculum: HKDSE, IBDP

Hong Kong International Learning Academy

Unit 7 & 8G Office Block One, North Plaza, 92 Siena Avenue, Discovery Bay
Tel: 2416 3198
Email: hkilacademy@gmail.com
Website: https://www.studyhkila.com

Hong Kong International School

Tai Tam Campus
 1 Red Hill Road, Tai Tam
Tel: 3149 7000

Repulse Bay Campus
 23 South Bay Close, Hong Kong
Tel: 2812 5000
Email: admissions@hkis.edu.hk
Website: www.hkis.edu.hk
Year founded: 1966
Curriculum: American with Advanced Placement courses offered in High School

Hong Kong Man Sang Kindergarten

Western District
 Shop A, G/F & 1/F, Nice Garden, 513-519 Queen's Road West
Tel: 2336 3232
Website: www.mansangkg.edu.hk
Year Founded: 2016

North Point
 2/F Foo Yet Kai Building, 52-60 Java Road, North Point
Tel: 2578 6763
Website: www.mansangkg.edu.hk
Year Founded: 1969
Email: admission@mansangkg.edu.hk

Hong Kong Nobel Preschool

G/F-2/F, 65 Waterloo Road, Kowloon
Tel: 2338 7899
Website: www.nobelpreschool.org
Year Founded: 2015

International Christian School

Shek Mun Campus
 1 On Muk Lane, Shek Mun
Tel: 3920 0000

Ma On Shan Campus (International Kindergarten)
 G/F, Kam Ho House (Block H), Kam Fung Court, Ma On Shan, Shatin, N.T.
Email: ics@ics.edu.hk
Website: www.ics.edu.hk
Year founded: 1991
Curriculum: American, AP

International College Hong Kong (Secondary)

60 Sha Tau Kok Road, Shek Chung Au, Sha Tau Kok
Tel: 2655 9018
Email: info@ichk.edu.hk
Website: www.ichk.edu.hk
Year founded: 1984
Curriculum: IBPYP, English, IGCSE, IBDP

International College Hong Kong Hong Lok Yuen (Kindergarten & Primary)

3, Twentieth Street, Hong Lok Yuen, Tai Po
Tel: 3955 3000
Email: info@ichkhly.edu.hk
Website: www.ichk.edu.hk
Year founded: 1984
Curriculum: IBPYP, English, IGCSE, IBDP

Invictus School Hong Kong

Tseung Kwan O Campus (Kindergarten & Primary)
 Monterey Place, 23 Tong Chun Street, Tseung Kwan O
Tel: 3643 1868
Email: admissions@invictus.edu.hk

Chai Wan Campus (Secondary)
 188 Tai Tam Road, Chai Wan
Tel: 3852 7200
Email: admissions.chaiwan@invictus.edu.hk
Website: www.invictus.edu.hk



Island Children's Montessori Kindergarten

Tin Hau Campus
 Units B & C, LG/F & UG/F, 16 Tin Hau Temple Road, Tin Hau

Lei King Wan Campus
 Shop GC 19-21 Site C, Tai Hong Street, Lei King Wan
Tel: 3421 9100
Email: admissions@icms.edu.hk

Island Montessori International Kindergarten

North Point Campus
 Commercial Unit, G/F, Bedford Gardens, 151-173 Tin Hau Temple Road, North Point, HK
Tel: 3427 9100
Email: info@icms.edu.hk
Website: www.icms.edu.hk
Year founded: 2010
Curriculum: Montessori

Lei King Wan Campus
 Shop GC 19-21, G/F, Lei King Wan, Site C, 35 Tai Hong Street, Sai Wan Ho
Tel: 2562 8500
Website: http://icms.edu.hk
Year Founded: 2012

Island Waldorf School

Primary & middle school
 1/F 455 Queen's Road West, Sai Wan, Hong Kong

Kindergarten
 G/F 71-77 Smithfield, Kennedy Town, Hong Kong

Outdoor Activities Centre
 Ka Nam New Village, Lamma Island
Tel: 5114 1451
Email: info@iws.edu.hk
Website: www.iws.edu.hk

Italian International Kindergarten

Podium Level 1, Block 4, Phase 1, South Horizons, Ap Lei Chau, Hong Kong
Tel: 2662 3066
Email: info@iikg.edu.hk
Website: www.iikg.edu.hk
Year Founded: 2019

Japanese International School (International Section)

4663 Tai Po Road, Tai Po
Tel: 2834 3531
Email: esinfo@jis.edu.hk
Website: es.jis.edu.hk
Year founded: 1997
Curriculum: IB Primary Years Programme

Kellett School

Kowloon Bay Preparatory and Senior Campus
 7 Lam Hing Street, Kowloon Bay

Po Fu Lam Preparatory Campus
 2 Wah Lok Path, Wah Fu, Pok Fu Lam, Hong Kong
Tel: 3120 0700
Email: admissions@kellettschool.com
Website: www.kellettschool.com
Year founded: 1976
Curriculum: English National Curriculum including IGCSE and A-level

Kendall International Preschool

G/F, Residence 228, 228 Fuk Wing Street, Cheung Sha Wan, West Kowloon, Hong Kong
Tel: 2328 8223
Email: info@kendallpreschool.edu.hk
Website: www.kendall.edu.hk/
Year Founded: 2017
Curriculum: Own

Kiangsu & Chekiang Primary School & Kiangsu-Chekiang College (International Section)

Lower School
 30 Ching Wah Street, North Point, Hong Kong
Tel: 2570 4594

Upper School
 20 Braemar Hill Road, North Point
Tel: 2570 1281
Email: inter@kcis.edu.hk (Primary)
Email: inter2@kcis.edu.hk (Secondary)
Website: www.kcis.edu.hk
Year founded: 1993
Curriculum: Early Years Foundation Stage (EYFS); British National Curriculum; IB Diploma

Kingston International Kindergarten and Children Centre

G/F & 1/F, 12-14 Cumberland Road, Kowloon Tong
Tel: 2337 9049
Email: enquiry@kingston.edu.hk
Website: www.kingston.edu.hk
Curriculum: IB Primary Years Programme

Kingston International School

Lower Primary Campus
 113 Waterloo Road, Kowloon Tong, Kowloon
Tel: 2337 9031

Upper Primary Campus
 105 Waterloo Road, Kowloon Tong, Kowloon
Tel: 2337 9012
Email: enquiry@kingston.edu.hk
Website: www.kingston.edu.hk
Curriculum: IB Primary Years Programme

Kohitsuji Kindergarten

Shop 1, G/F, Site 10, Whampoa Garden, Hung Hom
Tel: 2330 6677
Website: www.kohitsujiyouchien.com
Year Founded: 2013



**Kornhill International Nursery
(Kornhill Anglo Chinese Kindergarten)**

G/F 16 Hong Shing Street, Kornhill, Quarry Bay, HK
Tel: 2884 4186
Email: admin@kornhill-edu.com
Website: www.kornhill-edu.com
Year Founded: 1986
Curriculum: Teaching Strategies. The Creative Curriculum for Preschool

Korean International School

55 Lei King Road, Sai Wan Ho, Hong Kong
Tel: 2569 5500
Email: admissions@kis.edu.hk
Website: www.kis.edu.hk
Curriculum: IPC, UK, IGCSE, A-Levels, Korean



Kowloon Baptist Church Kindergarten

G/F., 45-47 Grampian Road, Kowloon
Tel: 2336 6213
Email: admission@kbck.edu.hk
Website: www.kbck.edu.hk

Kowloon Cannan Anglo-Chinese Kindergarten

G/F, 28B Grampian Road, Kowloon Tong
Tel: 2336 2096
Website: www.cannan.edu.hk
Year Founded: 1983

Lady Eleanor Holles International School Foshan

26 Jingping Road, Chancheng District 528000, Foshan
Tel: +86 757 2992 8101
Email: admissions@leh-foshan.cn
Website: http://www.leh-foshan.cn/

Lantau International School

Cheung Sha Campus
 No. 22, Upper Cheung Sha Village, Lantau Island, Hong Kong
Tel: 2984 0302
Tong Fuk Campus
 House 113, Tong Fuk Village, Lantau, Hong Kong
Tel: 2980 3676
Pui O Campus
 No. 17-19, Lo Wai Tsuen, Pui O, Lantau Island, Hong Kong
Tel: 2984 0302
Email: lisadmin@lis.edu.hk
Website: www.lis.edu.hk
Year founded: 1995
Curriculum: British Curriculum

Leapfrog Kindergarten and Playgroup

11 Pak Tam Chung Village, Sai Kung Country Park, Sai Kung
Tel: 2791 1540
Email: admim@leapfrogkindergarten.org
Website: www.leapfrogkindergarten.org
Year founded: 1992
Curriculum: EYFS

Learning Habitat Kindergarten

Hampton Loft Campus
 Shop 2, 5/F Hampton Loft, 11 Hoi Fan Road, Tai Kok Tsui
Tel: 2501 5105
Website: www.learninghabitat.org
Year Founded: 2005
Papillons LP Campus
 Shop 12, 15 & 16, G/F Papillons Square, 21 Tong Chun Street, Tseung Kwan O
Tel: 2363 3005
Website: www.learninghabitat.org
Year Founded: 2010

Les Petits Lascars French International Preschool

Central Campus
 2 & 3/F, Wellington Plaza, 56-58 Wellington Street, Central
Tseung Kwan O Campus
 G01, Capri Place, 33 Tong Yin Street, Tseung Kwan O
Wong Chuk Hang Campus
 Units 306-307, 3/F, One Island South, 2 Hung Yip Road, Wong Chuk Hang
Tel: 2526 8666
Email: admissions@petitslascars.com
Website: hkkidsacademy.edu.hk/les-petits-lascars
Year founded: 2006
Curriculum: French

Li Po Chun United World College

10 Lok Wo Sha Lane, Sai Sha Road, Shatin
Tel: 2640 0441
Email: office@lpcuwc.edu.hk
Website: www.lpcuwc.edu.hk
Year founded: 1992
Curriculum: IBDP

Little Lantau Montessori Kindergarten

Unit 12 & 13, G/F, Silverview Centre, 8 Ngan Kwong Wan Road, Mui Wo, Lantau Island
Tel: 3689 7033

Lou Pichoun French International Preschool Hong Kong

Tseung Kwan O Campus
 1A-2A, G/F, Alto Residences, 29 Tong Yin Street, Tseung Kwan O
Tel: 2813 4277 / 6304 1021
Website: www.loupichoun.com
Stanley Campus
 1/F, 5 Stanley New Street, Stanley, Hong Kong
Tel: 2813 2456
Happy Valley Campus
 G/F Door C, 22 Fung Fai Terrace, Hong Kong
Tel: 2813 2456
Email: info@loupichoun.com
Website: www.loupichoun.com
Year founded: 1997
Curriculum: French, Own

Ludus Kindergarten

2/F, Le Billionnaire, 46 Sa Po Road, Kowloon City
Tel: 2382 0061
Website: www.ludus.edu.hk
Year Founded: 2015

MAGART International Kindergarten

Whampoa Campus
 Shop G3A, Site 7, Whampoa Garden, 9 Tak On Street, Hong Kong
Tel: 2786 9314 / 2788 0788
WhatsApp: 9879 1509
Email: info.wp@magartedu.com
Kornhill Campus
 16 Hong Shing St, Kornhill, Quarry Bay, Hong Kong
Tel: 2786 9152 / 2786 9189
WhatsApp: 6717 3175
Email: info.tk@magartedu.com
Fanling Campus
 G/F, Phase 1, Fanling Centre, New Territories, Hong Kong
Tel: 2677 8109
WhatsApp: 9445 8322
Email: info.fl@magartedu.com
Year Founded: 2018
Curriculum: Enhanced EYFS, Reggio Emilia and inquiry approach

Malvern College Hong Kong

3 Fo Chun Road, Pak Shek Kok, New Territories
Tel: 3898 4688
Email: admissions@malverncollege.org.hk
Website: www.malverncollege.org.hk
Year founded: 2018
Curriculum: IB



Malvern College Pre-School Hong Kong

Island West
 G/F & 1/F Viking Court, 165-166 Connaught Road West, Sai Ying Pun, Hong Kong
Tel: 3898 4670
E-mail: iw-office@malvernpreschool.hk
Coronation Circle
 Units 9-12, Coronation Circle, 1 Yau Cheung Road, Southwest Kowloon
Tel: 3898 4660
E-mail: office@malvernpreschool.hk
Website: www.malvernpreschool.hk

Maple Bear Canadian International Kindergarten Hong Kong

Shop 7, G/F, Alto Residences, 29 Tong Yin Street, Tseung Kwan O
Tel: 2813 4887 / 6848 1264
Email: admissions@maplebear.hk
Website: www.maplebear.hk

MASS International Preschool

Shop 2, G/F & LG/F, Lai Tak Plaza, Tai Hang, Hong Kong
Tel: 3955 1588
Email: info@masspreschool.edu.hk
Website: www.masspreschool.com
Year founded: 2012
Curriculum: Other

Mighty Oaks Nursery & Kindergarten

1/F, Lungga Mansion, 46A Belcher's Street, Kennedy Town, Hong Kong
Tel: 2806 8383
Email: info@mightyoaks.edu.hk
Website: www.mightyoaks.edu.hk
Year founded: 2015
Curriculum: Early Years Foundation Stage

Ming Wai International Kindergarten

Flat A & B, G/F & 1/F, Alice Court, 10-12 Tsat Tsz Mui Road, North Point
Tel: 2561 5008
Website: www.mingwai.edu.hk
Year Founded: 1982
North Point Branch
 Shop 1 G/F & 1/F, Fairview Court, 5-13 Tsat Tsz Mui Road, North Point
Prince Edward Branch
 Shop 6 of G/F & Flat 1-5 of 1/F, Kenwood Mansion, 15 Playing Field Road, Prince Edward
Tel: 2522 2688

Mills International Preschool

The Spectacle, 8 Cho Yuen Street, Yau Tong, Kowloon, Hong Kong
Tel: 2717 6336
Email: preschool@millsinternational.edu.hk
Website: www.millsinternational.edu.hk
Year founded: 2013
Curriculum: Early Years Foundation Stage

Montessori for Children

House A, Phoenix Garden, RBL 1033 Tai Tam Village, Stanley, Hong Kong
Tel: 2813 9589
Email: hongkong@montessori.edu.sg
Website: www.montessori.edu.sg
Year founded: 1986
Curriculum: Montessori

Mori Lisa International Kindergarten

Level 5 Flat Roof, Block 7, Greenwood Terrace, Chai Wan
Tel: 3176 1236
Email: info@morilisa.hk
Website: www.morilisa.hk
Year founded: 2014
Curriculum: Early Years Foundation Stage

Morningstar Preschool and Kindergarten

Block 2, G/F, Chi Fu Fa Yuen, Pok Fu Lam
Tel: 6993 7157
Email: hello@morningstarschools.com
Website: www.morningstarpreschool.com.hk
Year founded: 2011
Curriculum: International

Mui Wo OWLS School & Kindergarten

1/F, Unit A, Silver Centre Building, Mui Wo Ferry Pier Road, Mui Wo, Lantau
Tel: 2984 0006
Email: office@muiwoowlsschool.edu.hk
Website: www.muiwoowlsschool.edu.hk
Year founded: 2010
Curriculum: English

Mulberry House International Kindergarten

Southside Campus
 Shops 1 & 2, G/F, Ocean Court, 3 Aberdeen Praya Road, Aberdeen, HK
Tel: 5598 0555
Tai Po Campus
 LG/F Kindergarten, Mayfair By The Sea I, 23 Fo Chun Road, Tai Po, HK
Tel: 5598 0909
Website: https://mulberryhousekg.com/

Munsang College Kindergarten

G/F-1/F, Block A & G/F-2/F, Block F, 8 Dumbarton Road, Kowloon City
Tel: 3655 3500
Website: www.munsang.edu.hk
Year Founded: 1926

Mynors International Kindergarten

Portion A, Commercial Unit, Shop 1-11, 1/F Belair Monte Shopping Centre, 3 Ma Sik Road, Fanling
Tel: 2355 7500
Website: www.mynors.hk

Nord Anglia International School Hong Kong

Early Years Campus
 285 Hong Kin Road, Tui Min Hoi, Sai Kung, New Territories
Primary Campus
 11 On Tin Street, Lam Tin, Kowloon
Secondary Campus
 19 Yuet Wah Street, Kwun Tong, Kowloon
Tel: 3958 1428
Email: admissions@nais.hk
Website: www.nais.hk
Year founded: 2014
Curriculum: English, IGCSE, IBDP



Norwegian International School

Kindergarten Campus
 175 Kwong Fuk Road, Tai Po
Tel: 2638 0269
Email: kinder@nis.edu.hk
Primary School Campus
 170 Kam Shan Road, Kam Shan Village, Tai Po
Tel: 2658 0341
Email: office@nis.edu.hk
Website: nis.edu.hk
Year founded: 1984
Curriculum: IPC, UK Literacy Curriculum, Australian Mathematics Curriculum





Oisca Japanese Kindergarten

G/F Ming Yuen Mansion, 26-48 Peacock Road, North Point
Tel: 2775 5899
Website: www.oisca-youchien.ne
Year Founded: 1986

Ontario eSchool

4/F Tower, 6 Bowring St, Jordan
Tel: 2393 8321/ 2393 8312
Email: info@oesasia.org
Website: www.oesasia.org



Oxbridge School

G/F B & 1F, Star Ruby, 1 San Wai Street, Hung Hom, Kowloon
Tel: 2612 1888
Email: admissions@oxbridgeschool.hk
Website: www.oxbridgeschool.hk

Parkview International Pre-School

Podium Level, Kowloon Station, 1 Austin Road West, Kowloon
Tel: 2812 6801
Email: pipsinfo-kl@pips.edu.hk
Website: www.pips.edu.hk
Year founded: 2007
Curriculum: International Baccalaureate (IB)

Parkview Rhine Garden Pre-school

Tower 1, 1st Floor, Rhine Garden, 38 Castle Peak Road, Sham Tseng, N.T.
Tel: 2491 1082
Email: school@pipsrg.edu.hk
Year founded: 1994

Parkview-Rhine Garden International Nursery

Tower 5, 1Podium Level 2, Rhine Garden, 38 Castle Peak Road, Sham Tseng, N.T.
Tel: 2496 2080
Email: school@pipsrg.edu.hk
Website: pipsrg.edu.hk
Year founded: 1994

Po Leung Kuk Choi Kai Yau School

6 Caldecott Road, Piper's Hill, Kowloon
Tel: 2148 2052
Email: info@cky.edu.hk
Website: www.cky.edu.hk
Year founded: 2002
Curriculum: Own, IGCSE, IBDP

Pods Kindergrten & Preschool

Tin Hau Campus
 11 Tin Hau Temple Road, Tin Hau, Hong Kong
Tel: 3460 3560
Harbour Heights Campus
 G01B & 1/F, Harbour Heights, 1 Fook Yum Road, North Point, Hong Kong
Tel: 2242 2261
Email: info@pods.com.hk
Website: www.pods.com.hk
Year founded: 2013
Curriculum: Own

Renaissance College ESF

5 Hang Ming Street, Ma On Shan
Tel: 3556 3556
Email: admissions@rchk.edu.hk
Website: www.rchk.edu.hk
Year founded: 2006
School Type: Private
Curriculum: IB Primary Years Programme, IB Middle Years Programme, IB Diploma, IB Career-related Programme

Rightmind International Nursery & Kindergarten

Shum Wan Campus
 G/F, Broadview Court, No. 11 Shum Wan Road, Hong Kong
Tel: 2795 1018
South Horizons Campus
 UG/F, Tower 26-28, South Horizons, Phase 4, Ap Lei Chau
Tel: 2875 0452
Email: parentservice@kinderu.org
Website: www.rmkg.org
Year founded: 1980
Curriculum: Other

Rosebud Primary School

UG 28-37 Waterside Plaza, 38 Wing Shun Street, Tsuen Wan
Tel: 2406 7300
Email: info@rosebud.edu.hk
Website: www.rosebud.edu.hk
Year Founded: 2004
Curriculum: IPC

Safari Kid International Kindergarten

Happy Valley Campus
 16 Min Fat Street, Happy Valley, Hong Kong
Tel: 2177 0001
Email: happyvalley@safarikidasia.com
Pok Fu Lam Campus
 L101 Chi Fu Landmark, Chi Fu Fa Yuen, Pok Fu Lam
Tel: 2177 0001
Email: infohk@safarikidasia.com
Website: www.safarikidasia.com
Year founded: 2005
Curriculum: Other

Sai Kung International Pre-school

159 Che Keng Tuk Road, Sai Kung
Tel: 2791 7354
Email: skip@skip.edu.hk
Website: skip.edu.hk
Year founded: 1989
Curriculum: Early Years Foundation Stage

Sai Kung Montessori

Unit SB, 787 Tan Cheung, Po Tung Road, Sai Kung
Tel: 5369 8587
Email: info@saikungmontessori.com
Website: www.saikungmontessori.com
Year Founded: 2017
Curriculum: Montessori

Saint Bright International Kindergarten

G/F & 1/F, Cameron Mansion, 29-31 Lion Rock Road, Kowloon City
Tel: 2337 5255
Website: www.stbrigt.edu.hk
Year Founded: 2014

Salesian School

Address: 16 Chai Wan Road, Shau Kei Wan, Hong Kong
Tel: 2885 0032
Email: mail@salesian.edu.hk
Website: salesian.edu.hk
Year Founded: 1951

Curriculum: Local curriculum with internationalised timetable & Multiple Intelligence electives



Sear Rogers International School

Tseun Wan Campus
 Portion A, Podium E, 4/F, Riviera Gardens, Tsuen Wan
Tel: 2547 5479
Email: enquiry@sris.edu.hk
Website: www.sris.edu.hk
Year founded: 1982
Curriculum: English, IGCSE, A-Levels

SDM-Chatsworth International Kindergarten & Nursery

166 Boundary Street, Kowloon Tong
Tel: 2560 3322
Email: info@sdm-chatsworth.hk
Website: www.sdm-chatsworth.hk
Year Founded: 2017
Curriculum: Singapore-based curriculum

Shrewsbury International School Hong Kong

10 Shek Kok Road, Tseung Kwan O
Tel: 2480 1500
Email: admissions@shrewsbury.edu.hk
Website: www.shrewsbury.edu.hk
Year founded: 2018
Curriculum: English National Curriculum



Singapore International School Preparatory Years and Primary Section

23 Nam Long Shan Road, Aberdeen
Tel: 2872 0266
Email: general@singapore.edu.hk
Secondary Section
 2 Police School Road, Wong Chuk Hang, Hong Kong
Tel: 2919 6966
Email: secondary@singapore.edu.hk
Website: www.singapore.edu.hk
Year founded: 1991
Curriculum: Singapore curriculum, IGCSE, IBDP

Small World Christian Kindergarten

10 Borrett Road, Mid-Levels
Tel: 2525 0922
Email: office@smallworld.edu.hk
Website: smallworld.edu.hk
Year founded: 1986

Spanish Primary School

130 Shuen Wan Chan Uk Tai Po, N.T., Hong Kong
Tel: 3955 1588
Email: info@spis.com.hk
Website: www.spis.com.hk

St. Catherine's International Kindergarten Campus 1

1 Essex Crescent, Kowloon Tong
Tel: 2337 7273
Website: www.stcatherines.edu.hk
Year Founded: 1970
Campus 2
 4 & 6 Norfolk Road, Kowloon Tong
Tel: 2337 7344 / 2337 7680
Website: www.stcatherines.edu.hk
Year Founded: 1970

St. Catherine's Kindergarten (Harbour Place)

1/F Harbour Place, 8 Oi King Street, Hung Hom
Tel: 2670 6600
Website: www.stcatherines.edu.hk
Year Founded: 2011

St. Paul's Covent School (Secondary Section)

140 Leighton Road, Causeway Bay, Hong Kong
Tel: 2576 0601
Website : www.spcs.edu.hk
Year founded: 1854
Curriculum: HKDSE, IGCSE, A-Levels

St. Stephen's College

22 Tung Tau Wan Road, Stanley, Hong Kong
Tel: 2813 0360
Email: sschk@ssc.edu.hk
Website: www.ssc.edu.hk
Year founded: 1903
Curriculum: IBDP, HKDSE

Stamford American School Hong Kong

25 Man Fuk Road, Ho Man Tin
Tel: 2500 8688
Email: admissions@sais.edu.hk
Website: www.sais.edu.hk
Year founded: 2017
Curriculum: Inquiry-based American Curriculum with AERO and Common Core Plus Standards

The Harbour School

The Grove (Primary Campus)
 332 Ap Lei Chau Bridge Road, Ap Lei Chau
The Garden (Secondary Campus)
 138 Lee Chi Road, Ap Lei Chau
Tel: 3612 1090
Email: admissions@ths.edu.hk
Website: www.ths.edu.hk
Year founded: 2007
Curriculum: American

The International Montessori School of Hong Kong

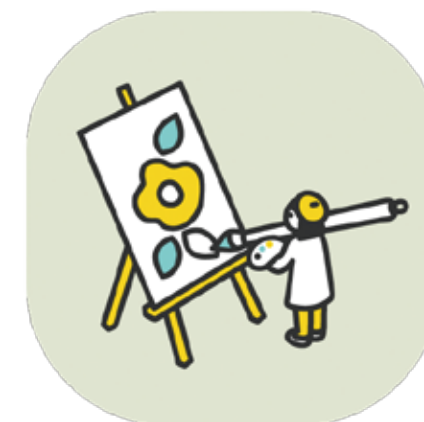
Aldrich Bay Campus
 G/F, i-UniQ Grand, 155 Shau Kei Wan Road, Shau Kei Wan, Hong Kong
Tel: 2156 9033
Email: admin.ab@ims.edu.hk
Mid-Level Campus
 Mezzanine Entrance, Tung Fai Gardens, 17 Po Yan Street, Sheung Wan, Hong Kong
Tel: 2857 7007
Email: admin.ml@ims.edu.hk
South Horizons Campus
 G/F, Blocks 23 to 23A, South Horizons, Phase III, Ap Lei Chau, Hong Kong
Tel: 2861 0339
Email: admin.sh@ims.edu.hk
Stanley Campus
 Phase III, Ma Hang Estate, Stanley (off Stanley Plaza), Hong Kong
Tel: 2566 7196
Email: admin.st@ims.edu.hk
Website: www.ims.edu.hk
Year founded: 2002
Curriculum: Montessori

The ISF Academy

1 Kong Sin Wan Road, Pokfulam, Hong Kong
Tel: 2202 2028
Email: admissions@isf.edu.hk
Website: academy.isf.edu.hk
Year founded: 2003
Curriculum: Own, IBMYP, IBDP

The ISF Pre-School

Shop G01, G/F, 97 Belcher's Street, Kennedy Town, Hong Kong
Tel: 2559 8518
Email: psenquiry@isf.edu.hk
Website: preschool.isf.edu.hk
Year founded: 2015
Curriculum: Other





Think International Academy

11 Kwong Lee Road, Cheung Sha Wan
Tel: 2157 2111
Email: think_ta@think.edu.hk
Website: www.think.edu.hk
Year founded: 2016
Curriculum: IBPYP, Cambridge CIE Secondary 1 & 2, IBDP

Think International School

117 Boundary Street, Kowloon Tong, Kowloon
Tel: 2338 3949
Email: think_tis@think.edu.hk

Think International Kindergarten

Kowloon Tong Campus
 5 Lincoln Road, Kowloon Tong
Tel: 2338 0211
Email: thinkkg_kt@think.edu.hk
Laguna Campus
 99 Cha Kwo Ling Road G/F, Kowloon
Tel: 2727 4747
Email: thinkkg_lc@think.edu.hk
Ma On Shan Campus
 Level 2, Sunshine Bazaar,
 628 Sai Sha Road, Ma On Shan, New Territories
Tel: 2633 7800
Email: thinkkg_mos@think.edu.hk
Mei Foo Campus
 The Podium, Nob Hill, 8 King Lai Path, Mei Foo,
 Kowloon
Tel: 2727 7585
Email: thinkkg_mf@think.edu.hk
Website: www.think.edu.hk
Year founded: 2003
Curriculum: Other

Topkids International Kindergarten (Yuen Long)

G/F (part of) & 1/F, Shing Fat Building,
 14 Yuen Long Tai Cheung Street, Yuen Long
Tel: 2447 2669
Website: www.topkids.edu.hk

Tsim Sha Tsui Funful International Kindergarten

No. 136 Nathan Road, Tsim Sha Tsui, Kowloon
Tel: 2311 3883 / 2311 4707
Website: www.funful.hk
Year founded: 1969
Curriculum: Local, International

Tutor Time International Nursery & Kindergarten

Kowloon Tong – Dorset Crescent
 No. 1 Dorset Crescent, Kowloon Tong
Tel: 2573 9188
Kowloon Tong – Suffolk Road
 No. 9 Suffolk Road, Kowloon Tong
Tel: 2529 1188
Mid Level – Caine Road
 Shop A-B, G/F, Botanical Court,
 5 Caine Road, Mid-Levels, Hong Kong
Tel: 2529 2288
North Point - Braemar Hill
 LG/F & G/F Braemar Hill Shopping Center,
 45 Braemar Hill Road, Hong Kong
Tel: 3529 1833
Yuen Long – Yoho
 Shop G011, Ground Level and Mezzanine Level,
 Yoho Mall 1, No. 9 Yuen Lung Street,
 Yuen Long, N.T.
Tel: 2392 8188
Email: info@tutortime.com.hk
Website: www.tutortime.com.hk
Year founded: 2001

Umah International Primary School

Fung Chi Tsuen, Wang Chau, Yuen Long, N.T.
Tel: 2618 3172 / 2450 5401
Email: umahdin@umahhk.com
Website: umahhk.com
Year founded: 1996
Curriculum: Own

Victoria Shanghai Academy

19 Shum Wan Road, Aberdeen
Tel: 3402 1000
Email: enquiries@vsa.edu.hk
Website: www.vsa.edu.hk
Year founded: 2004
Curriculum: IBPYP, IBMYP, IBDP

Victoria Education Organisation

Belcher Campus
 Podium of Level 3 (Kindergarten Area),
 The Westwood, 8 Belcher's Street, Hong Kong
Tel: 2542 7001
Email: bgvkoffc@victoria.edu.hk
Harbour Green Campus
 G/F, Harbour Green, 8 Sham Mong Road, Kowloon
Tel: 2885 1928
Email: hgvk@victoria.edu.hk
Harbour Heights Campus
 Ko Fung Court, Harbour Heights,
 5 Fook Yum Road, North Point, Hong Kong
Tel: 2571 7888
Email: hhvnoff2@victoria.edu.hk
Homantin Campus
 1/F, Carmel-on-the-Hill, 9 Carmel Village Street,
 Homatin, Kowloon
Tel: 2762 9130
Email: hmtoffc@victoria.edu.hk
Lower Kornhill Campus
 2-8 Hong On Street, Kornhill, Hong Kong
Tel: 2885 3331
Email: lkvkoffc@victoria.edu.hk
Middle Kornhill Campus
 2/F, No. 18 Hong On Street, Kornhill, Hong Kong
Tel: 2885 1888
Email: mkvkoffc@victoria.edu.hk
South Horizons Campus
 Phase II, Podium Level,
 South Horizons, Hong Kong
Tel: 2580 8633
Email: shvkoffc@victoria.edu.hk
Upper Kornhill Campus
 G/F, 14 Hong Yue Street, Kornhill, Hong Kong
Tel: 2513 1208
Email: ukoffc@victoria.edu.hk
Website: www.victoria.edu.hk
Year founded: 1965
Curriculum: IBPYP, TCRWP
Ocean Pride Campus
 G36 – G37 & Kindergarten
 G/F, Ocean Pride Mall, 100 Tai Ho Road,
 Tsuen Wan West
Tel: 2186 6222
Email: opvk@victoria.edu.hk

Wellborn International Pre-school

G/F, Nursery Block,
 Chevalier Garden, Ma On Shan
Tel: 2642 6033
Website: www.wellborn.edu.hk

Wilderness International Kindergarten

Ground Floor, Po Tak Mansion,
 85 Smithfield Rd, Kennedy Town, Hong Kong
Tel: 2595 9066
Email: admissions@wilderness.asia
Website: www.wilderness.asia
Year founded: 2016

Wycombe Abbey School Hong Kong

17 Tin Wan Street, Aberdeen, Hong Kong
Tel: 2129 7128
Email: admissions@was.edu.hk
Website: www.was.edu.hk
Year founded: 2019
Curriculum: National Curriculum for England

Yew Chung International School (YCIS)

Secondary Section
 3 To Fuk Road, Kowloon Tong
Primary Section (3 campuses)
 • 2 Kent Road, Kowloon Tong
 • 11 Kent Road, Kowloon Tong
 • 22 Somerset Road, Kowloon Tong
Early Childhood Education (5 campuses)
 • 29 Kent Road, Kowloon Tong
 • 151 Waterloo Road, Kowloon Tong
 • 3 Somerset Road, Kowloon Tong
 • 20 Somerset Road, Kowloon Tong
 • Savannah Place, 3 Chi Shin Street, Tseung Kwan O
Tel: 2338 7106
Email: admissions@ycef.com
Website: www.ycis-hk.com
Year founded: 1932
Curriculum: International curriculum, IGCSE,
 IB Diploma Programme

YMCA Christian Academy

70 Bridges Street, Sheung Wan, Hong Kong
Tel: 2537 2552
Email: admission@yca.edu.hk
Website: www.ymca.org.hk



YMCA of Hong Kong Christian College

2 Chung Yat Street, Tung Chung, Lantau
Tel: 2988 8123
Email: info@yhkcc.edu.hk
Website: www.yhkcc.edu.hk
Year founded: 2003
Curriculum: HKDSE, IGCSE, A-Levels

YMCA of Hong Kong Christian International Kindergarten

LG/F, 373 Po On Road, Cheung Sha Wan, Kowloon
Tel: 2281 6089
Email: christianikgw@ymcahk.org.hk
Website: ymcahk.org.hk
Year founded: 2003
Curriculum: EYFS, Own

York International Pre-School (Hong Kong)

1/F & 2/F, Tsui King Court,
 18 Water Street, Sai Ying Pun
Tel: 2368 7038
Website: www.york.edu.hk

York International Kindergarten

51 Cumberland Road, Kowloon Tong
Tel: 2336 1483
Website: www.york.edu.hk
Year Founded: 1979

York International Pre-School

G/F & 1/F, 14 Stafford Road, Kowloon Tong
Tel: 2339 0728
Website: www.york.edu.hk
Year Founded: 2012

York Montessori International Pre-School (Yuen Long)

G/F, Commercial Accomodation,
 No. 18 Castle Peak Road Tam Mei,
 Kam Tin, Yuen Long
Tel: 3485 9268
Website: www.york.edu.hk

Zebedee International Kindergarten & Nursery

G/F Yat Wing House,
 Yat Nga Court, Nam Wan Road, Tai Po
Tel: 2650 3339
Email: admin@zebedee.edu.hk
Website: www.zebedee.edu.hk
Year founded: 2008
Curriculum: Early Years Foundation Stage

Zenith Kindergarten (Kowloon Tong)

G/F & 1/F, No. 6 Kent Road, Kowloon Tong
Tel: 2337 3818
Website: www.zenith.edu.hk
Year Founded: 2010



Alliance Française de Hong Kong

1&2/F, 123 Hennessy Road, Wan Chai
Tel: 2527 7825
Email: wanchai@afhongkong.org
Website: www.afhongkong.org

British Council

3 Supreme Court Road, Admiralty
Tel: 3913 5100
Email: enquiries@britishcouncil.org.hk
Website: www.britishcouncil.hk

Camp Asia

25 Man Fuk Road, Ho Man Tin
Tel: 3467 4567
Email: info@campasia.hk

Capstone Prep Education Center

Secondary Section
 2/F, One Hysan Avenue, Causeway Bay, Hong Kong
Tel: 2893 6060
Email: info@capstoneprep.com
Website: www.capstoneprep.com

**Centre of Learning and Life Enhancement
Hong Kong Y.W.C.A.**

3/F No 1 MacDonnell Road, Central
Tel: 3476 1345
Website: http://clle.ywca.org.hk/
Facebook: https://www.facebook.com/YWCA.
 CLLE

CICERO Study Solutions

Tel: 9850 4764
Email: info@cicero.com.hk
Website: www.cicero.com.hk

Eye Level Hong Kong

Unit 601, Island Place Tower,
 510 Kind's Road, North Point
Tel: 2104 0188
Email: hongkong@myeyelevel.com
Website: www.myeyelevel.com

GAPSK

Room 1803, 18/F, Hollywood Plaza,
 No. 610 Nathan Road, MongKok, Kowloon
Tel: 3101 0800
Email: info@gapsk.org
Website: www.gapsk.org

**Genius Development Workshop and
Sciencetech Future**

Shop 401, 404, 406 & 412, Level 4, The Arcade,
 100 Cyberport Road, Hong Kong
Tel: 2338 9877
WhatsApp: 6351 8779
Kowloon Tong Campus
 No. 10 Somerset Road,
 Kowloon Tong, Hong Kong
Tel: 2180 9249
WhatsApp: 5395 4669
Websites:
<https://www.geniusdevelop.com/>
<https://www.scientechfuture.com/>

Goethe-Institut Hong Kong

14/F HK Arts Centre, 2 Harbour Road,
 Wanchai, Hong Kong
Tel: 2802 0088
Email: info-hongkong@goethe.de
Website: goethe.de

Hong Kong Golf & Tennis Academy

81 Tai Chung Hau, Sai Kung
Tel: 3187 8900
Email: enquiry@hkgta.com
Website: www.hkgta.com/

InNordics

Shop 111, Savannah Place, 3 Chi Shin Street, Tseung
 Kwan O, Hong Kong
Tel: 6083 3531
Email: info@innordics.com
Website: www.innordics.com

KUMON Education Centre

Room 3403-3408, 34/F, Chubb Tower, Windsor
 House, 311 Gloucester Road, Hong Kong
Tel: 2890 6533
Email: info@kumon.com.hk
Website: kumon.com.hk

Lee Educational Consulting

Unit 705, 7th Floor, Star House,
 No. 3 Salisbury Road, Tsim Sha Tsui
Mobile: 9416 0798
Wechat: ljasonkh
Website: www.leeeducation.com

LOHAS Rink

1 Lohas Park Road, Tseung Kwan O, NT
Tel: 2622 8400
Email: info@lohasrink.com.hk
Website: https://lohasrink.com.hk/

Mathconcept Learning Center

Park Central Shopping Arcade,
 Tseung Kwan O
Tel: 2796 3399
WhatsApp: 2788 1188
Website: www.mathconcept.com

Mini Mandarins Learning Centre

Causeway Bay Centre
 7/F, Capital Commercial Building,
 26 Leighton Road, Causeway Bay
Tel: 2320 1128
Email: info@minimandarins.com
Central Centre
 Room 1703 17/F Universal Trade Centre,
 No. 3-5A Arbuthnot Road, Hong Kong
Tel: 2320 5208
Email: central@minimandarins.com
Website: www.minimandarins.com
Year founded: 2014

**Monkey Tree English Learning Center
(Head Office)**

Room 2801, 28/F Citicorp Centre,
 18 Whitfield Road, Hong Kong
Tel: 3563 6771
Email: enquiry@monkeytree.com.hk
Website: www.monkeytree.com.hk

Novalearn

Unit 3, 16/F, W50,
 50 Wong Chuk Hang Road, Wong Chuk Hang
Tel: 2268 0084
Email: hello@novalearn.org
Website: www.novalearn.org

NTK Academic Group

Main Campus
 3-5/F & 7/F (Front office),
 Lee Garden Five, 18 Hysan Avenue, Causeway Bay
Tel: 2577 7844
Email: enquiry@ntk.edu.hk

Kowloon Campus

2/F, the Avery, 16 Hau Wong Road, Kowloon City
Tel: 2718 3000
Email: enquiry@ntk.edu.hk
Website: www.ntk.edu.hk
Year founded: 1996
Curriculum: SAT, AP, TOEFL, IB, IELTS

Specialist Education Advisory

Office 1401, 14/F Hermes Commercial center,
 4-4A Hillwood road, TST HK
Tel: 2569 5400
Whatsapp: 9174 7418
Email: info@specialistedu.com.hk

**Spanish World Leading Language Group**

404, 4/F Lap Fai Building,
 6-8 Pottinger Street, Central, Hong Kong
Tel: 2526 9927
Email: hk@spanishworldgroup.com
Website: www.spanishworld.hk

The Edge Learning Center

Causeway Bay
 2F, Zoroastrian Building,
 101 Leighton Road, Causeway Bay
Tel: 2972 2555
Email: info@theedge.com.hk
Website: www.theedge.com.hk

The Genius Workshop

Happy Valley Center
 Unit B, 1/F, Southern Pearl Court,
 151 Wong Nai Chung Road,
 Happy Valley, Hong Kong
Tel: 2591 0100

Taikoo Center

Unit 1001, Podium, Hang Sing Mansion,
 3 Tai Wing Avenue,
 Quarry Bay, Hong Kong
Tel: 2591 0009

Whampoa Center

Shop 25, G/F, Site 12, The Whampoa,
 Hung Hom, Kowloon
Tel: 3526 0701
Whatsapp: 6211 1968
Email: info@g-workshop.com
Website: http://www.g-workshop.com/





SHREWSBURY
HONG KONG



ONE SCHOOL: TWO PATHWAYS

RSVP



Shrewsbury International School Hong Kong offers two bespoke study pathways underpinned by the academic rigour of the Early Years and Foundation Stage framework and the English National Curriculum. At the heart of the British International Pathway lies a broad and holistic curriculum that supports the development of native or near-native level English and international standard Chinese. At the heart of the Hanqing Bilingual Pathway (汉庆双语课程) lies a culturally rich curriculum that supports the development of native or near-native level Chinese and international standard English. Both options support fluid entry into secondary schools of first choice both within and beyond Hong Kong.

Join us on a campus tour to learn more about the unique distinctions of a Shrewsbury education.

