

SERVICED SUITES

SPECIAL EDITION 2023

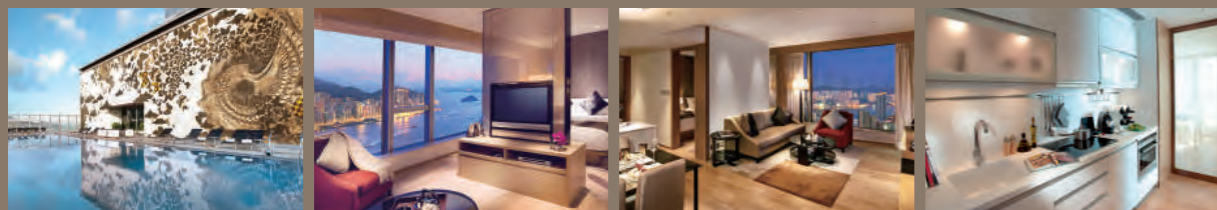


THE
HARBOUR
VIEW
PLACE

at the ICC megalopolis

Where LUXURY and CONVENIENCE converge

Serviced Suites atop Kowloon Station

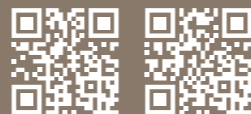


Situated atop MTR/AEL Kowloon Station and seamlessly connected to the Hong Kong Express Rail Link, The HarbourView Place offers an exquisite transport network to Mainland China and the world. Indulge in a range of stylish amenities and enjoy the luxurious living with breathtaking views of the harbour and city.

Enquiries on Monthly Package: ☎ 3718 8000 📞 9661 7100

1 Austin Road West, Kowloon, Hong Kong (Entrance next to W Hong Kong)

www.HarbourViewPlace.com



Website

WhatsApp

 新鴻基地產
Sun Hung Kai Properties



FOUR SEASONS
PLACE
HONG KONG

A NEW DIMENSION OF LUXURY

Serviced Suites atop Hong Kong Station

Indulge in our curated lifestyle at Four Seasons

Located atop the MTR/AEL Station in Central, Four Seasons Place offers luxury serviced suite living adorned with magnificent views. With a full range of world class facilities. Four Seasons Place blends tasteful living with elegant comfort and convenience.



Enquiries on Monthly Package: ☎ 3196 8228 📞 9728 1886 www.fsphk.com

8 Finance Street, Central, Hong Kong

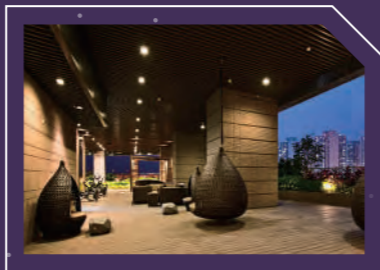




VEGA
SUITES

Redefining Contemporary Chic Serviced Suites atop Tseung Kwan O Station

Vega Suites features spectacular sea or city view suites that creates an ultimate living experience. Enjoy the seamless connection to the business district in Kowloon East & Hong Kong Island with two shopping centres, PopCorn and PopWalk just steps away.



Enquiries on Monthly Package: ☎ 3963 7888 📞 9731 7188

www.vegasuites.com.hk



 新鴻基地產
Sun Hung Kai Properties

VICTORIA 海
HARBOUR 航
RESIDENCE 匯

 新鴻基地產
Sun Hung Kai Properties

EXQUISITE *living*

by the harbour

Smart Home Living
Luxurious Seaview Clubhouse



Enquiries for
Monthly Packages
☎ 📞 9661 8200

133 Java Road (MTR North Point A1 Exit; Victoria Harbour T6)

Please refer to Important Notes on Victoria Harbour Residence website. (a) This promotional material is not an advertisement for promoting, and does not purport to promote, the sale of any residential property of Victoria Harbour Development. This promotional material does not constitute and must not be construed as any offer or representation, whether express or implied, on the part of Choice Win (H.K.) Limited in relation to the sale, or promotion for the sale, of any residential units of Victoria Harbour Development, and shall not be relied on by any person as such. (b) The photos may have been edited and/or processed with computerized imaging techniques and are not taken from Victoria Harbour Residence. They do not illustrate the actual view from any part of Victoria Harbour Residence.

Contents

06 Editor's Message

08 Overview

Hong Kong

18 Four Seasons Place Hong Kong

20 Victoria Harbour Residence

22 The Fullerton Ocean Park Hotel Hong Kong

24 The Repulse Bay – de Ricou Serviced Apartments

26 Pacific Place Apartments

28 D'HOME

30 Lanson Place Waterfront Suites, Hong Kong

32 Two MacDonnell Road

34 Hong Kong Parkview

36 Harbour Grand Hong Kong

38 Harbour Plaza North Point

40 Hotel Alexandra

42 Kornhill Apartments

46 Eight Kwai Fong Happy Valley

48 Hotel Madera Hollywood

50 CM+ Hotels and Serviced Apartments

52 Shama Serviced Apartments

54 The Unit Serviced Apartments

56 Regent Heights Serviced Apartment

58 Apartment O

60 Soho 69

62 Loplus Serviced Apartments

64 Yin Serviced Apartments

HOME SUITE HOME

SINO SUITES

Bespoke urban living

Well appointed and conveniently located in vibrant precincts.

Choices of partially or fully furnished to serviced suites are available.

It is where convenience meets comfort.



@ sinosuites 6396 7989

Leasing enquiries +852 8107 0038

SINO SUITES

SINO GROUP

All information and photos are for reference only. We take no responsibility for the contents of this promotional material, make no representation as to its accuracy or completeness and, to the extent permitted by law, expressly disclaim any liability whatsoever for any loss howsoever arising from or in reliance upon the whole or any part of the contents thereof. The photos of the Suites in this promotional material may be different from the reality and may have been processed with computerized imaging techniques and are for reference only. The fittings, appliances, amenities, lighting effects, furniture, decorative items, plants and other objects etc. thereat may not be provided in the Suites, please refer to the relevant agreement for the list of furniture and other items etc. to be provided in the Suites. This promotional material does not constitute any offer, representation, undertaking or warranty whatsoever, whether express or implied, on our part.

Contents

Kowloon & New Territories

- 68 The HarbourView Place @ICC megalopolis
- 70 Vega Suites
- 72 TOWNPLACE WEST KOWLOON
- 74 Hong Kong Gold Coast Residences
- 76 Harbour Grand Kowloon
- 78 Harbour Plaza Metropolis
- 80 Harbour Plaza 8 Degrees
- 82 Kowloon Harbourfront Hotel
- 84 The Kowloon Hotel
- 86 Harbour Plaza Resort City
- 88 Madera Residences
- 90 Xi Hotel
- 92 Yi Serviced Apartments
- 94 Sai Kung Serviced Apartment
- 96 Directory

Serviced Suites Special Edition



Display Advertising Department

3/F., Sing Tao News Corporation Building,
7 Chun Cheong Street, Tseung Kwan O Industrial Estate,
New Territories, Hong Kong

Features Editor: Andy Ng

Designer: Yan Au Yeung

Business Director: Irene Chan

Advertising Hotline: (852) 3181 3311

Fax: (852) 2758 3579

Website: www.thestandard.com.hk

Email: advertise@thestandard.com.hk

All rights reserved.



A LUXURY RESORT LIFESTYLE

The pinnacle of beachside living, The Repulse Bay combines breathtaking panoramic sea views, spacious accommodation and the highest standards of service with ultra-sophisticated residences nestled within tranquil, green surroundings.



109 REPULSE BAY ROAD, HONG KONG TEL: +852 2292 2808 E-MAIL: LEASINGTRB@PENINSULA.COM

therepulsebay.com

It's business as usual!

As the world emerges from the pandemic, it is important to take stock of the changes that have taken place in the last three extraordinary years, and the new challenges confronting us; we need to broaden our perspective in deciding on the next strategic move.

First and foremost, we should not lose sight of the fact that Hong Kong continues to enjoy strong support of the Motherland and maintains its close connections with the rest of the world, serving as a bridge to the huge Mainland market. Key national strategies, including the 14th Five-Year Plan, the development of the Guangdong-Hong Kong-Macao Greater Bay Area (GBA), and the Belt and Road Initiative, provide Hong Kong with unlimited opportunities moving forward.

With the successful implementation of the "One Country, Two Systems" regime, what has remained constant is Hong Kong's strongest business-friendly environment. It boasts an advanced infrastructure in both hardware and software, cementing its position as an international financial, trade and shipping center, as well as the world's largest offshore Renminbi (RMB) business center.

But far from resting on its laurels, Hong Kong is pumping resources into emerging industries, such as innovation and technology (I&T) which is set to benefit from the strategic development of the Northern Metropolis. These initiatives complement the enormous strides already made in the Greater Bay Area, and dovetail with the national Five-Year Plan.

Located at the heart of Asia, Hong Kong is a logistics hub and a top-choice destination for multinational corporations to set up their operations in Asia, with many using it as a regional headquarter. They are pleasantly surprised by the low and simple tax regime; feel secure with the sound legal system; and delight in finding that everything works like clockwork. As an open and diversified metropolis where old and new styles meet, Hong Kong is also an appealing city that happily embraces both Chinese and Western cultures.

In the midst of this positive milieu, we are blessed in having a robust serviced suites industry that has withstood the severest of tests, and is raring to receive visitors and businessmen as they re-discover Hong Kong's charms and vibrancy.

Andy Au

Features Editor



THE FULLERTON
OCEAN PARK HOTEL • HONG KONG



Sea, soul, stories
of the Southside

Welcome to Fullerton's *Oceanfront Resort*



Immerse yourself in endless blue, as you embrace joy and peacefulness brought by the surrounding nature. Wake up to the sound of the ocean and the warmth of the sun.

Featuring 425 oceanfront rooms and suites all with panoramic seaviews, 4 dining destinations, a 60-metre infinity pool, kids' lagoon with water slides, 6,400-square-foot indoor kids' zone, an oceanview luxury spa and gym, right on the doorstep of Water World and Ocean Park.

Experience a blissful getaway at The Fullerton Ocean Park Hotel.





With the final removal of all Covid restrictions, Hong Kong is able to fledge its wings again and is fully open for business. With a result-oriented government in place, 'Asia's World City' is ready, willing and able to start a new chapter of growth and development in a world that has undergone profound changes unseen in a century.

Building on its traditional advantages as a financial and trading hub, Hong Kong knows it must reinforce its strength to safeguard its position in the international arena, as well as develop emerging industries to keep pace with global trends.

In financial services, for instance, it has adopted a multi-pronged approach by facilitating large-scale advanced technology enterprises to list in its stock exchange; promoting the launch of more Renminbi-denominated investment tools; strengthening mutual market access; and developing green and sustainable finance, and more.

Government is also dedicated to promoting innovation and technology (I&T) development, and facilitating the commercialisation of research and development (R&D) outcomes. Attractive terms and conditions are offered to lure high-potential I&T enterprises to set up operations in Hong Kong, while a \$10 billion 'Research Academic and Industry Sectors One-plus Scheme' has been launched to support R&D commercialisation. Meanwhile, it is also pushing ahead with the construction of the Hong Kong-Shenzhen Innovation and Technology Park in the Lok Ma Chau Loop and development of San Tin Technopole, as an integral part of the Greater Bay Area Initiative.

Hong Kong is also set to flex its muscles in the arts, cultural

and creative industries with the establishment of a Culture Commission to formulate a development blueprint, and a Mega Arts and Cultural Events Fund to support staging of international shows and events in Hong Kong. There will also be financial support for promising and budding small and medium-sized arts groups and artists.

To effectively execute all these and other plans, Government recognises the importance of recruiting the requisite talents. An office has been set up to attract strategic enterprises to Hong Kong with targeted facilitated measures including a \$30 billion Co-Investment Fund, while another concentrates on recruiting talents and providing them with one-stop support. Measures include setting up Dedicated Teams for Attracting Businesses and Talents in 17 Mainland Offices and overseas Economic and Trade Offices to proactively reach out to target enterprises and talents; and launching Top Talent Pass Scheme to attract talents of high salary and graduates of the world's top 100 universities to pursue careers in Hong Kong.

All in all, Hong Kong is gearing up for a full-scale recovery, and making every effort to catch up on lost time and opportunities.

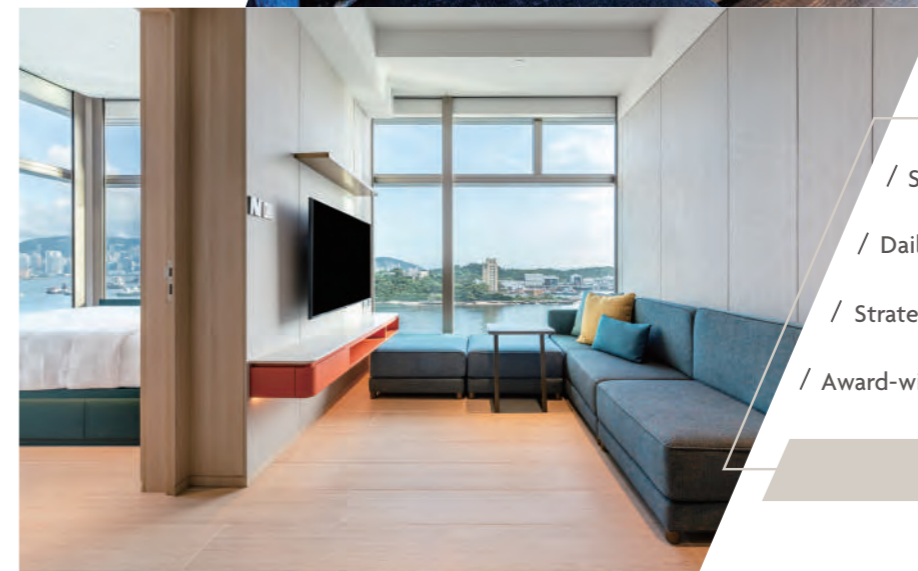
It's true that one has to pay a premium for living in a world-class metropolis like Hong Kong, but we certainly make up for it in terms of the quality of service and the amenities on offer. There is a range of accommodation to suit different budgets, personal preferences and lifestyles, and our efficient transport network means that distance to/from the CBD is not an over-riding determinant in the choice of accommodation.

TOWNPLACE 本舍

WEST KOWLOON

- NEW MEGA FLAGSHIP FOR LEASE -

THE FIRST MODERN
APARTHOTEL
FOR YOUNG PROFESSIONALS



- / Service On-demand Hospitality /
- / Daily to Monthly and Yearly Stay /
- / Strategic Location Brings Connectivity /
- / Award-winning Designed Suites /

townplacehk

10 Lai Ying Street,
West Kowloon



新鴻基地產
Sun Hung Kai Properties



TOWNPLACE本舍
本舍TOWNPLACE

(852) 7073 3377

VIEWING BY APPOINTMENT. The information and photos contained herein is for reference only. Some of the photos may have been enhanced by computer graphics. It is subject to change without prior notice and does not form part of any offer or contract. Subject to Availability.



Pacific View



SIGNATURE HOMES
— RESIDENTIAL LEASING —

RESIDENCE FOR LEASE

Mid-Levels · Island South
The Peak · Other Urban Areas

With extensive experience in luxury home leasing and one of the city's best residential property portfolio in prime areas, we strive to serve our tenants from our heart with attentive services. Offering an exceptional living experience that caters to our tenants' every need.



Dynasty Court



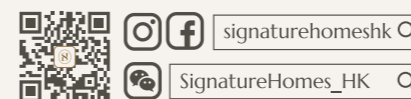
Hillsborough Court



127 Repulse Bay Road



Explore more availabilities to unfold your next leasing experience
Leasing Hotline ☎ 9228 2931 | www.signaturehomes.com.hk



THE SIGNATURE OF
luxury living

the
STAUNTON
CENTRAL

22 STAUNTON STREET CENTRAL HONG KONG



BESPOKE SERVICED
APARTMENT IN THE CBD

Serviced 1-bedroom suites with
balcony option

471 & 614 sq.ft. (MFA) / 306 & 399 sq.ft. (SFA)



thestaunton@sino.com @sinosuites
www.thestauntonsuites.com



50m to Central-Mid-Levels
Escalators
50米步行至中環半山扶手電梯

Leasing enquiries +852 8107 0038

SINO SUITES SINO GROUP

All information and photos are for reference only. We take no responsibility for the contents of this promotional material, make no representation as to its accuracy or completeness and, to the extent permitted by law, expressly disclaim any liability whatsoever for any loss howsoever arising from or in reliance upon the whole or any part of the contents thereof. The photos of the Suite in this promotional material may be different from the reality and may have been processed with computerized imaging techniques and are for reference only. The fittings, appliances, amenities, lighting effects, furniture, decorative items, plants and other objects etc. thereat may not be provided in the Suite, please refer to the relevant agreement for the list of furniture and other items etc. to be provided in the Suite. This promotional material does not constitute any offer, representation, undertaking or warranty whatsoever, whether express or implied, on our part.

the
JOHNSTON
WAN CHAI

74-80 JOHNSTON ROAD WAN CHAI HONG KONG



PRIME SERVICED APARTMENT
IN THE HEART OF WAN CHAI

Serviced 1-bedroom suites
Designer apartment options available

566 – 577 sq.ft. (MFA) / 354 – 365 sq.ft. (SFA)



thejohnston@sino.com @sinosuites
www.thejohnstonsuites.com



To Lee Tung Avenue and
Exit D of Wan Chai MTR
即達利東街及灣仔地鐵站

Leasing enquiries +852 8107 0038

SINO SUITES SINO GROUP

All information and photos are for reference only. We take no responsibility for the contents of this promotional material, make no representation as to its accuracy or completeness and, to the extent permitted by law, expressly disclaim any liability whatsoever for any loss howsoever arising from or in reliance upon the whole or any part of the contents thereof. The photos of the Suite in this promotional material may be different from the reality and may have been processed with computerized imaging techniques and are for reference only. The fittings, appliances, amenities, lighting effects, furniture, decorative items, plants and other objects etc. thereat may not be provided in the Suite, please refer to the relevant agreement for the list of furniture and other items etc. to be provided in the Suite. This promotional material does not constitute any offer, representation, undertaking or warranty whatsoever, whether express or implied, on our part.

太古廣場栢舍 PACIFIC PLACE APARTMENTS



Located in Admiralty, Pacific Place Apartments comprises 268 fully serviced one to three-bedroom suites with generously sized, intelligently proportioned layouts, full kitchens and the potential for any degree of personalisation, overlooking views of the tranquil greenery or Victoria Harbour.



For more information, please contact our leasing team.

+852 3515 6565

Pacific Place, 88 Queensway, Hong Kong

ppleasing@swirehotels.com



Serviced Suites

Hong Kong

Four Seasons Place Hong Kong



Boasting world-class amenities and impeccable services, Four Seasons Place promises an ultimate luxury living experience surrounded by panoramic views of the Victoria Harbour.



Where Location Meets Perfection

Resting in the heart of Hong Kong's financial district, Four Seasons Place offers unrivaled convenience. Located atop of MTR / Airport Express Link at Hong Kong station, guests can easily reach the Hong Kong International Airport within 24 minutes. Adjoining the property is the International Finance Centre, ifc mall and luxury landmark Four Seasons Hotel, offering direct access to business meetings as well as Michelin-starred dining options.

For a buzzing nightlife experience, the city's popular neighbourhood at Lan Kwai Fong and SOHO is just a short walk away. Guests can also take advantage of the nearby Star Ferry pier to explore Hong Kong's laid-back outlying islands and its sandy beaches, hiking trails and village cultures.

Luxury Perfected, Exquisite Facilities

Designed by internationally renowned designers Yabu Pushlberg and Bilkey Llinas Design, Four Seasons Place is a world-class serviced suite hotel that overlooks the iconic Victoria Harbour. Each serviced suite promises an extraordinary home-away-from-home experience with world-class amenities and warm hospitality. The suites are meticulously designed and furnished with elegant décor, providing guests with exquisite style and comfort. The serviced suites are further enhanced by a comprehensive range of high-quality entertainment provisions, including IPTV, Bose Home Entertainment system and Bluetooth enabled music system. Suites also feature a well-equipped kitchenette for those who enjoy a home-cooked meal.

At Four Seasons Place, guests can enjoy state-of-the-art facilities. Located on the 59th floor, a rooftop heated pool offers an elevated getaway from the city hustle. After taking a swim, guests can relax in the heated Jacuzzi or workout in the gym with full fitness facilities on the same floor. Also adjacent to the pool is the famous Sky Lounge, a recreational space where guests can simply take in the magnificent harbour view. For business travelers, a multi-function family room on the 59th floor with its breathtaking views of the Victoria Harbour is the perfect venue for meetings.

To ensure a hassle-free stay, a team of Guest Relation Executives is available to assist with personalized services. From opening a bank account to arranging city tours and leisure



activities, ensuring a hassle-free experience whilst settling into Hong Kong. Four Seasons Place also provides multilingual concierge services, housekeeping services, change of bed linens, laundry service and limousine service to ensure all our guests a memorable stay. Guests are pampered by an exclusive selection of shopping privileges with an esteemed membership at Hong Kong's premium shopping centre, ifc mall which is connected to Four Seasons Place.

Four Seasons Place offers flexible arrangements for short and long-term stays, with contract terms ranging from 1 to 12 months.

Information

Gross Size:	547 - 3,562 sq. ft.
No. of rooms:	519
Contract term:	1 month minimum
Monthly rate:	HK\$54,600 up
Address:	Atop Hong Kong Station, 8 Finance Street, Central
Enquiries:	(852) 3196 8228
WhatsApp/WeChat/Signal:	(852) 9728 1886
Email:	enquiries@fshk.com
Website:	www.fshk.com



Victoria Harbour Residence

VICTORIA HARBOUR RESIDENCE 海 嶺 匯



Echoes with SHKP's two flagship serviced suites hotels: Four Seasons Place and The HarbourView Place on both sides of Victoria Harbour, Victoria Harbour Residence offers a panoramic view of the world renowned harbour and dazzling Kowloon East and provides an exceptional living experience in a world-class integrated complex.

Accessibility

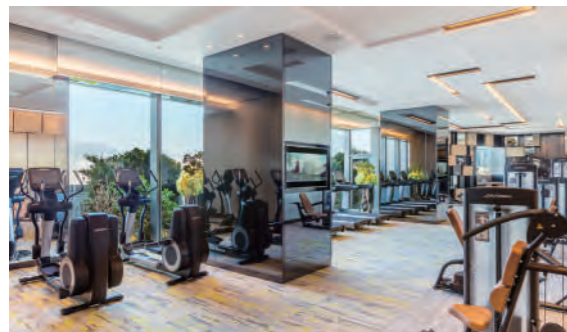
Victoria Harbour Residence, being Tower 6 of the luxury residential project Victoria Harbour, is one of the portfolio of Signature Homes. Located near MTR North Point station, Victoria Harbour Residence enables easy access to both Central and the Kowloon East CBD. With the Central-Wanchai



Bypass and Island Eastern Corridor link, it only takes around 5 minutes travel to Central by car. Perches on the North Point waterfront adjacent to Hyatt Centric Victoria Harbour Hong Kong and SHKP's flagship shopping mall Harbour North, different dining options and enticing shopping experience are within easy reach.

Services and facilities

Victoria Harbour Residence offers a total of 140 serviced residential units ranging from one to three bedrooms with balcony/ flat roof or roof to cater residents' varying needs. Saleable areas vary from 361 square feet to 1,063 square feet. Each flat provides home comforts with individual split-type air-conditioners, a fully equipped kitchenette including a Vintec



temperature-controlled wine cellar and a household refrigerator, stylish furniture in addition to high-quality appliances such as an LED/ OLED TV, a Blu-ray player, a Bluetooth speaker and wireless charging Bluetooth alarm clock. The bathroom in the master bedroom of three-bedroom units also features a geothermal heating system, ensuring a perfect home-away-from-home experience.

Delivering impeccable services throughout the stay, residents are offered with hassle-free and comfortable living. Flats are featured with free Wi-Fi, a dedicated mobile app and voice-activated Home Automation systems. Residents can experience a digitalised lifestyle by using voice control or the specially designed app to operate and remotely control the lights, the audio-visual system, the air-conditioning, and even the electric curtains (only available in three-bedroom units).

To enhance the luxury living experience, residents' recreation interest is well taken care of. Residents can enjoy Club Vici, the exclusive Victoria Harbour private clubhouse with leisure facilities comprise of indoor and outdoor heated pool, Jacuzzi, a well-equipped gym, yoga room, steam & sauna room, spa, children playground and Director's House with BBQ deck and banquet room.

Excellent personalized services are available to ensure a comfortable living experience including a 24-hour multilingual concierge service as well as housekeeping services for a hassle-free living. Stay at Victoria Harbour Residence for the most refined luxury inside, complimented by breathtaking views outside.



Information

Size: 361-1,063 sq. ft.(Saleable)
No. of rooms: 140
Contract term: 1 month minimum
Monthly rate: HK\$38,500 up
Address: 133 Java Road, North Point, Hong Kong (Near MTR North Point Station)
Enquiries: (852) 2284 2988
WhatsApp/WeChat/Signal: (852) 9661 8200
Email: enquiries@victoriaharbourresidence.com
Website: www.victoriaharbourresidence.com



"Important notes: Please refer to the website of Victoria Harbour Residence".

The Fullerton Ocean Park Hotel Hong Kong

As the first Fullerton hotel in Hong Kong, and the first Fullerton resort worldwide, The Fullerton Ocean Park Hotel Hong Kong is a brand-new, sustainability-minded, oceanfront luxury resort with panoramic views of the South China Sea.

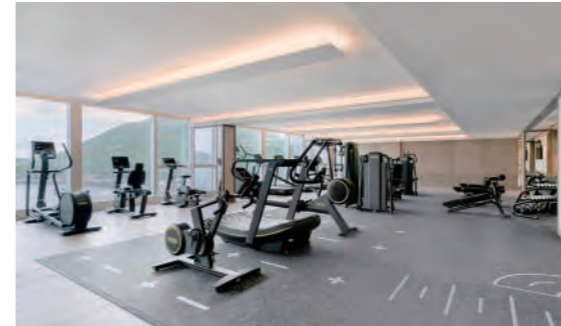


Location & accessibility

Adjacent to the Water World Ocean Park, one of Hong Kong's top leisure and entertainment attractions, The Fullerton Ocean Park Hotel Hong Kong is conveniently located on the Southside, often affectionately described as 'the back garden of the Island'.

It is in close proximity to Hong Kong's emerging cultural hub where you can capture the precinct's dynamic vibes with some leisurely art gallery-hopping. Alternatively, there is an array of magnificent hiking trails for the more energetic.

The Hotel is a relaxing and tranquil retreat far removed from the hustle and bustle of the city, and yet so well connected to the CBD. Complimentary coach service is available from 8 am to 11 pm daily between the Hotel and Ocean Park MTR station from which residents can enjoy a high-frequency, first-class commute to every corner of the city.



Services & facilities

The Hotel offers 425 well-appointed ocean-view guest rooms, complete with complimentary Wi-Fi services and local calls, as well as laundry service. Guests can pick and choose from flexible stay options for 7 days, 14 days and 30 days or more.

Guests are spoiled by the choice of four superb in-house dining destinations, including Jade Restaurant which serves



Cantonese cuisine renowned for its exquisite flavours, freshness and balance, and Satay Inn which is certain to titillate taste buds with its aromatic, spicy dishes from Singapore.

Outdoor facilities include a 60-meter infinity pool boasting immaculate ocean views, and a kids' lagoon, while indoor facilities include a kids' zone, a 24-hour gym with state-of-the-art equipments, and a luxury spa.

Information



Size:	377 sq. ft. up
No. of rooms:	425
Contract term:	7 nights or up
Monthly rate:	7 nights : HK\$1,780 and up 14 nights : HK\$1,680 and up 30 nights : HK\$30,000 and up
Address:	3 Ocean Drive, Aberdeen, Hong Kong
Tel:	(852) 2166 7326
WhatsApp :	(852) 6263 1146
Email:	fop.sales@fullertonhotels.com
Website:	fullertonhotels.com



The Repulse Bay – de Ricou Serviced Apartments



The de Ricou Apartments at The Repulse Bay represent the pinnacle of luxury beach-side living, offering a breathtaking panorama, uninterrupted sea views, spacious accommodation and the highest-quality finishes.



Accessibility

Located 15 minutes from Central, the de Ricou Apartments occupy the former site of the legendary Repulse Bay Hotel which had served literary luminaries, royalty and icons of the stage and screen. At this coveted location, if you fancy a dip in the pristine waters of the South China Sea, or a leisurely stroll on the seaside promenade to nearby Deep Water Bay, just nip down from your resort apartment to the world-renowned Repulse Bay beach.

Families will be pleased with the choice of leading international schools for their children in the neighbourhood, including Canadian International School of Hong Kong, French International School of Hong Kong, Hong Kong International School, and more.

Aside from a secured covered car park exclusively provided for residents, shuttle bus services operate to and from Central and the Ocean Park MTR station for added convenience.



Services and facilities

For a supremely comfortable, move-in-ready home away from home, the three-bedroom duplex is bright and airy with impeccable sea views, high-end finishes, and contemporary, custom-designed furnishings. Generously sized at 3,409 sq ft gross, the two-level space is connected by an elegant, cantilevered staircase. For a more choice, go for the spacious two-bedroom serviced apartments, ranging from 1,735 sq ft to 1,805 sq ft, all comfortably furnished for modern lifestyles.

The entire complex is operated by The Hongkong & Shanghai Hotels, Limited, renowned for quality and professional management. There is a dedicated, one-stop e-concierge service, TRBChat, to take care of all your needs so you can relax and indulge in the many pleasures the property offers. The range of other thoughtful services includes maid and linen service, as well as valet laundry.

For leisure and entertainment, you name it, they have it in the 60,000 sq ft clubhouse. There is something for everyone, including a fully equipped gym with aerobics and dance room, an outdoor resort pool with children's adventure and play area, a heated 25 m indoor pool, a squash court, two tennis courts, plus sauna, steam rooms and outdoor Jacuzzi. Stay connected in this community with regular activities exclusively for residents, such as seasonal carnivals, cocktail gatherings, movies on the lawn, festive programmes and more.

Other amenities include The Verandah, serving traditional Continental cuisine with a modern twist; and Spices, serving fresh, sustainable and authentic Asian cuisine in a beautiful indoor and outdoor setting. Residents enjoy a 20% discount at these two dining establishments. Unlock other exclusive benefits from The Peninsula Hotels including savings on your hotel stay worldwide and in restaurants and bars at The Peninsula Hong Kong.

Elsewhere within The Repulse Bay complex is The Arcade which offers a nostalgic main street atmosphere for easy grocery shopping and chic boutique browsing. It also houses an award-winning spa, medical and education services, all set within a serene garden environment.



Information	
Room/ Unit Size(s):	Three-Bedroom Duplex/3,409 sq.ft. (Gross) Two-Bedroom/ 1,735 sq.ft. (Gross)
Price range:	HK\$95,000 - 230,000
Min. length of stay:	30 days
Total number of rooms:	49 apartments (17 serviced apartments)
Enquiries/ reservation:	Tel : (852) 2292 2808 Email : leasingtrb@peninsula.com
Address:	109 Repulse Bay Road, Hong Kong
Website:	www.therepulsebay.com

Pacific Place Apartments

太古廣場栢舍
PACIFIC PLACE APARTMENTS

At PACIFIC PLACE APARTMENTS, residents luxuriate in a superior lifestyle and enjoy highly individualised service by The Upper House team – from well-equipped facilities to a central location in the heart of the city, and an ultra-convenient transport network.



Accessibility

With seamless access to the adjoining Admiralty MTR station, PACIFIC PLACE APARTMENTS residents enjoy connectivity to every corner of the metropolis as the station is a transport hub that connects four main railway lines and



other transportation networks, including the Airport Express. A limousine service for city commutes and airport transfers is also available.

The apartments are part of the Pacific Place complex comprising the world-class shopping mall of Pacific Place and luxury hotels, offering Hong Kong's finest shopping, dining, and

leisure experiences. And if that is not enough, boutique cafes, art galleries and designer furniture shops await in the trendy Starstreet Precinct nearby. Residents can also take advantage of the adjoining Hong Kong Park, with its myriad of fountains and waterfalls, for a restorative stroll.

Being a pet-friendly residence, PACIFIC PLACE APARTMENTS welcomes one vaccinated pet under 15 kg per suite. Furry friends can enjoy play time at Tamar Dog Park, located a mere stone's throw away.

Services and facilities

Comprising 268 fully-serviced modern suites, PACIFIC PLACE APARTMENTS offers one-, two-, or three-bedroom suites, ranging from 1,220 to 2,650 square feet, based on a contemporary or oriental design theme. The living room's smart TV is concealed by a siding artwork, whilst a Bose surround-sound home theatre system delivers premium cinematic clarity. In-room complimentary WiFi and broadband Internet are also available.

The kitchen features a full selection of branded appliances and utensils, including coffee maker, microwave oven, conventional oven, refrigerator, dishwasher and washer-dryer. A multilingual Guest Experience team provides personalised support, while a full range of housekeeping services ensure homes are clean and well maintained.



Residents also enjoy access to Bimbo Concept's Children Residency, PAKT Smart Wardrobe services, discounts and access to various amenities at The Upper House, including exclusive dining privileges, wellness classes and regular resident community events.



Information



Room/ Unit Size(s): 1,220 to 2,650 sq.ft
 Price range: \$88,000 to \$280,000 per calendar month
 Min. length of stay: One month
 Total number of rooms: 268
 Enquiries/ reservation: Tel : (852) 3515 6565
 Fax : (852) 2877 2661
 Email : ppaleasing@swirehotels.com
 Address: Pacific Place, 88 Queensway, Admiralty, Hong Kong
 Website: www.pacificplaceapartments.com.hk

D'HOME



Perched at one of the best-connected areas in Wanchai, Hong Kong's commercial and cultural hub, D'HOME offers unparalleled urban convenience to residents and provides tranquil quality living at the heart of the city. Residents are spoiled for choices of things to do!

The neighborhood

Developed by Nan Fung Group, a leading developer, D'HOME is located at the heart of a quaint and historical district famed for its upscale restaurants and bars, quirky cafes, vibrant art scene and world-class exhibitions.

Available for both short and long term leasing, the property offers all the home comforts you would expect of a high-class establishment, with all units featuring a balcony to take in the vibes of a vibrant neighborhood. Perfect for both business and pleasure, it is well served by public transport, including the nearby MTR that provides easy and convenient access across town.

Well-rounded facilities

D'HOME offers a wide variety of facilities for resident's exclusive enjoyment. They can fully relax and recharge in the outdoor swimming pool; enjoy an immersive workout experience



at the fully-equipped gym; and spend quality time in the multi-function lounge - allowing plentiful fun for the family. To unwind and clear minds, visit the rooftop garden or the podium garden for stunning city views.

The apartments feature complimentary Wi-Fi Internet access and selected paid TV channels. Residents can stay connected anytime and anywhere. A full spectrum of well-rounded housekeeping services boosts residents' comfortable living experience.



Information

- Gross Size:** 401-582 sq. ft. (GFA); 270-380 sq. ft. (SA)
- Contract term:** 1 month minimum
- Monthly rate:** HK\$17,000 up
- Address:** 239 Queen's Road East, Wanchai
- Enquiries:** (852) 3108 3636
- Email:** info@dhome.com.hk
- Website:** www.dhome.com.hk



Your serviced apartment home in Wanchai

239 Queen's Road East,
Wan Chai, Hong Kong

Leasing Enquiries
www.dhome.com.hk
info@dhome.com.hk
+ 852 3108 3636



Lanson Place Waterfront Suites, Hong Kong



Oozing contemporary charm, Lanson Place Waterfront Suites stands amidst the shore of the Eastern waterfront. For those looking for a slice of home and comfort on the vibrant Hong Kong Island, this brand new sleek block of furnished apartments is the one for you.



Location and Accessibility

Located right on the shore of Hong Kong's Eastern waterfront, with panoramic sea view on one side and tranquil park life on another, Lanson Place Waterfront Suites' luxury furnished apartments and its wellness-centred lifestyle can be reached easily via a mere 5-minute walk from Sai Wan Ho MTR station or a 10 minutes' drive from Quarry Bay. Complimentary shuttle bus to Quarry Bay, Causeway Bay and Admiralty is also available on weekdays.

More than just a place to work and live, East Side is many other things its residents wants it to be: a glamorous location for exciting nights out; a family-friendly setting for sports and play in the park; a foodie's paradise in which the best are reserved for those in the know; or a shopping galore where the biggest selection of popular shops is all under one roof.

Services and Facilities

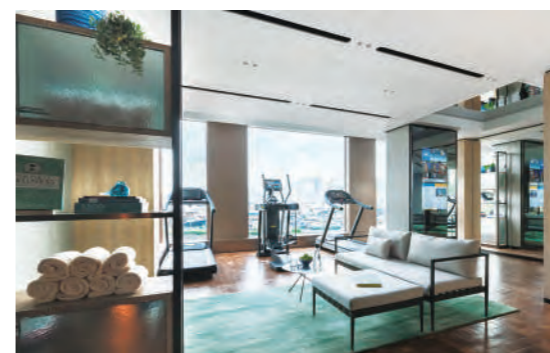
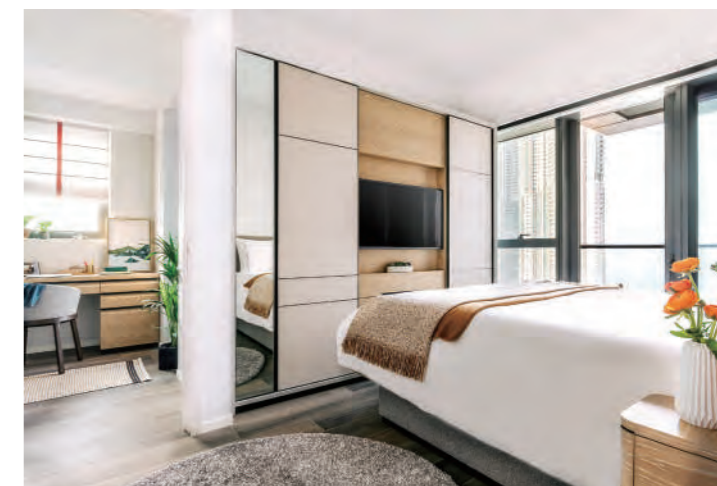
Each apartment comes with nice size balcony overlooking the sea, allowing residents to breathe in some fresh air. The high ceiling also allows plenty of sunlight and natural ventilation for our spaces. Featuring stylish furniture and appliances, high speed wi-fi, Bose Bluetooth speaker and iPad which can control TV, hue lighting and gates, our apartments aim to provide a high-end modern living for our residents. Complimentary grab-and-go breakfast and evening cocktails are available daily at the lounge, while housekeeping services will be provided twice a week.

In addition to a WOW tour upon arrival for residents to familiarize themselves with the neighborhood, Lanson Place Waterfront Suites has



every aspect of a modern wellness-centred lifestyle covered. Community-friendly services and facilities include a ground floor lounge specially designed for tenants to unwind. For those who want to get together with family and friends, an outdoor wellness pool and BBQ area are available for throwing private parties.

A fun array of resident activities include regular themed happy hour at the lounge and wellness-focused classes at the gym'brary or yoga'rden. For a complete mind and body workout, hit the gym'brary or the yoga'rden where you can overlook the magnificent harbour while working out. Alternatively, residents can also rent the STRiDA bike for free and cycle along the broadwalk promenade to breathe in some fresh air.



Information

Room Size: 345 - 1,363 sq. ft.
Price range: HK\$ 26,000-HK\$120,000 per month
No. of rooms: 74
Contract term: 1 month minimum
Address: 1 Oi Tak Street, Shau Kei Wan, Hong Kong
Enquiries: (852) 2178 2288
Fax: (852) 2178 2882
Email: enquiry.wfhk@lansonplace.com
Website: lansonplace.com/waterfrontsuites



Two MacDonnell Road



Well placed amongst the calming greenery of Central Mid-Levels, yet just minutes away from the CBD, Two MacDonnell Road is the perfect interim and long-term living solution for travelers and expats seeking a home away from home.



Location and accessibility

Located in the elite district of Central Mid-Levels, Two MacDonnell Road offers frequent shuttle bus service to and from the CBD, and carpark space is available upon request.

The HK Airport Express station, Central MTR station, and HK Convention and Exhibition Centre are all within 10 minutes of driving distance, while the HK International Airport is within reach in 45 minutes.

Just 10 minutes' stroll downhill are Lan Kwai Fong and SoHo, renowned for their eclectic dining and partying options. Within the same distance, you can reach the central financial district and up-scale shopping malls like the Landmark and ifc, brimming with luxury brands. The Hong Kong Zoological and Botanical Gardens and the Hong Kong Park are right next door, allowing a full immersion in nature.

Services and facilities

Benefitting from its unique location, most of the units command an unobstructed view of the park, with the city skyline as the backdrop. Subdued and cohesive colors spread over the whole apartment, and sunlight is ample. The use of windowsills demonstrates a wise use of space, as they are transformed into a padded sitting area decorated with colorful cushions.



Grasping the essence of home living, the kitchenette in every room is fully-equipped with appliances, including microwave oven, refrigerator, utensils and cookware. Other accessories like iron with ironing board, rollaway bed, and baby cot could also be arranged.

As a necessity of modern lifestyle, high-speed wireless broadband internet connection is present in every unit, together with cable TV, electronic safe, telephone lines with voice mail and IDD service.

Accommodating to every resident's unique requirements, the serviced apartment boasts impeccable service, ranging from in-room dining, to laundry and dry cleaning service. The reception and security are at your service 24/7, while housekeeping frees residents from household chores.

At Two MacDonnell Road, irresistible food is just at your fingertip. Overlooking the grandeur of the verdant Mid-levels and the city, residents can enjoy a delightful continental breakfast, comfort set lunch, the refreshing afternoon tea, and casual dining at the 'café bar on 8'. At the bar, you can indulge in the buy 1 get 1 free during the happy hours, perfect for



socializing and gatherings.

Looking for a space to socialize? The multipurpose Communal Room is an ideal setting for such a purpose. With a bit of work, this place could even be transformed into a party area fit for a maximum of 12 people.

Perfectly accommodating to busy schedules, a fitness session is welcomed at all times in the 24-hour gym. Sweaty clothes could be easily taken care of with the launderette service on site.



Information

Gross Size:	336 - 750 sq. ft.
No. of rooms:	213
Min. Length of Stay:	1 day
Daily rate:	HK\$1,200 and up
Monthly rate:	HK\$26,888 and up
Address:	2 MacDonnell Road, Mid-levels, Hong Kong
Enquiries:	(852) 2132 2132
Email:	resv@mr2.com.hk
Website:	www.twomr.com.hk



Hong Kong Parkview



Towering above the tranquil Tai Tam Country Park and the stunning southern coastline is Hong Kong Parkview. Offering a magical blend of scenic views and prime location, the property is a mere 15-minute drive to the CBD. Comprising 222 luxury serviced apartments, each representing a 'Home away from Home', Hong Kong Parkview guarantees guests a pleasant and impeccable experience while living in a cozy home that comes with five-star services and facilities.

Home meets art

Hong Kong Parkview sets itself apart with a distinctive, captivating artistic living experience for its residents. If you're on the lookout for the finer things in life, you can't go past Hong Kong Parkview's art-inspired serviced apartments. Boasting one of Hong Kong's most diverse private art collections, Parkview immerses guests in an extravaganza of exquisite sculptures, ceramics, modern artwork and paintings of all genres.

Your taste matters at this artistic serviced apartment. First, you can pick and choose your style from five different décor palettes. Next, you step into a world of inspiration and cinematic wonder with the thematic floors, each one boasting a unique and captivating ambience. From the classy themes of Hollywood, New York 1920s, Derby, Rock and Roll, Oriental, Gothic and Vampire, to hearty themes of Animal and Safari, as well as Nautical, there's something for everyone at this artistic abode.

An all-embracing resort

Catering to both families and solo travelers, this resort features an amazing array of indoor and outdoor facilities. Enjoy indoor heated and outdoor swimming pools, a three-floor well-equipped gym, tennis courts, golf simulators, a children's playground, and a plethora of dining options at the property's eight outlets – including Chinese, Western, Japanese, Whisky Bar, and Poolside Alfresco, and more, to satisfy all ages and tastes. But the enjoyment doesn't stop there.

As anyone would expect from a top-notch serviced apartment in Hong Kong, maid services, a fully-equipped kitchenette within

the suite, a private clubhouse, a private shuttle bus service, and car parking spaces are there for added convenience. At Hong Kong Parkview, a complete package of comfort, convenience and luxury is a given.

Bonus offerings

At Hong Kong Parkview, the longer you stay, the bigger your savings. A generous discount of up to 15% awaits those who book for a month or more before 31 Dec 2023 on New Luxury Package.

When you book a Standard or Deluxe Room now, there is a half board option of topping up HK\$3,500/month to enjoy exclusive perks, including an indulgent meal from the property's restaurant, complimentary access to co-working space and clubhouse membership.

And if you're looking to work away from a dream home-office, take advantage of the Perfect Home Office Package at a discounted price of HK\$36,000/month, also with the option of topping up to half board for HK\$3,500/month. With this attractive rate, you can work and wind down in a room with stunning views of the mountains or the podium, access the co-working space and the clubhouse, and enjoy one-stop services ranging from a carpark space to maid service. As always, tailoring an exceptional, all-rounded living experience for guests is at the heart of everything at Hong Kong Parkview.

Information

Gross Size:	254 - 2,010 sq. ft.
No. of room(s):	222 (Pet friendly apartments)
Contract term:	1 month minimum
Monthly rate:	HK\$ 21,000 - \$95,000
Address:	88 Tai Tam Reservoir Road, Hong Kong
Enquiries:	(852) 2812 3456 / 5200 8060
Email:	pvsales@hongkongparkview.com
Website:	www.hongkongparkview.com



HONG KONG PARKVIEW

An Oasis in the City



George's



The Whisky Bar

Home to seven dining outlets, including an all-day dining restaurant, an authentic Chinese restaurant, a Japanese Teppanyaki / Tempura restaurant, a Western-Japanese fusion beef restaurant, a poolside café, a Whisky Bar and more. The offering is impeccable and exquisite.



Kids Activities



Tennis Courts

Plays host to a variety of advanced fitness, sporting and recreational facilities, including a three level gymnasium, indoor and outdoor children's playgrounds, outdoor and indoor swimming pools, tennis courts and a golf simulator.

Located at the south of Hong Kong Island, surrounded by the tranquil Tai Tam Country Park and overlooking the stunning southern coastline, it's only a short 15-minute ride to Central, the business district and shopping centre.

Comprising 222 luxurious serviced apartments, each elegant and spacious suite represents a welcoming 'Home away from Home'. Staying guests can feel the warmth of home along with five-star service and facilities. Just like living with a personal butler, maid, driver, and with the opportunity to prepare international cuisine in the kitchen, just a step away.



Serviced Apartment



Enquiries: (852) 2812 3456 / 5200 8060
Email: pvsales@hongkongparkview.com
Address: 88 Tai Tam Reservoir Road, Hong Kong
Website: www.hongkongparkview.com

[Hong Kong Parkview](#) | [hongkongparkview](#)

[香港陽明山莊](#)



Harbour Grand Hong Kong



Harbour Grand Hong Kong, managed by Harbour Plaza Hotels & Resorts, offers luxury accommodation in its 828 fully-equipped guestrooms, five award-winning restaurants, all-rounded facilities and dedicated services.

Location & accessibility

Only a 2-minute walk from Fortress Hill MTR station, Harbour Grand Hong Kong is strategically located to combine comfort with convenience. Embracing panoramic Victoria Harbour view, the hotel is close to shopping malls, giving guests a wide array of dining and entertainment options.

Services and Facilities

Celebrating Hong Kong's famous harbourside skyline, Harbour Grand Hong Kong's luxury hotel accommodation comprises 828 rooms and serviced suites

featuring different perspectives of Victoria Harbour. Rooms and suites are spacious, coupled with premier guest services and amenities, such as laundry and housekeeping services. Some rooms come with a kitchenette or private patio.

Long staying guests can enjoy the use of hotel facilities, including the fitness centre and outdoor swimming pool, as well as the rooftop viewing deck overlooking the stunning Victoria Harbour. Meals can be enjoyed at the hotel's restaurants serving award-winning dishes. Management and maintenance fees, electricity and water charges are all inclusive.

The state-of-the-art fitness centre on the third floor features the latest fitness equipment, such as Function Training System, Treadmill, Crosstrainer, Recumbent Bike, and Climber, to help guests enhance their physical health and de-stress their minds. In addition, the hotel also features a 27-metre outdoor pool, with a children's swimming pool. For complete stress relief, guests can indulge in a therapeutic massage in the tranquillity of the Spa & Massage Centre.



Information

Gross Size: 333 - 1,075 sq. ft.
No. of rooms: 828
Contract term: 1 month
Monthly rate: HK\$22,400 - HK\$75,000 per month
Address: 23 Oil Street, North Point, Hong Kong
Tel: (852) 2121 2667
Fax: (852) 2121 2696
Email: servicedsuites.hghk@harbourgrand.com
Website: www.harbourgrand.com/hongkong



Harbour Plaza North Point



Side Harbour View Suite



Premier Harbour View Room

A popular choice for those looking for a homey stay in the Eastern District of Hong Kong, Harbour Plaza North Point offers a series of tastefully designed guest rooms and service suite, with overlooking the stunning view of Victoria Harbour.

Location & accessibility

Conveniently located on the Island East, Harbour Plaza North Point is just 2 minutes walk from MTR Quarry Bay Station, and in close proximity to iconic shopping malls City Plaza, local eateries, supermarket and banks. Only 10 minutes away from Causeway Bay by MTR and 10 minutes walk from commercial hub of Taikoo Place.

Accommodation

719 designed guest rooms and serviced suites with City View, Hill View and Harbour view are categorized into various room types of Superior, Studio, Premier, Side Harbour View Suite and Two-bedroom Quad Suite. Premier rooms located on 29-33/F, renovated in 2018

offer ultimate comfort experience. It will be a perfect choice for business travelers in this location.

Serviced Suite

Our fully furnished serviced suites are elegantly designed in contemporary settings and well equipped kitchenette with cooking utensils (applicable for Studio and Suite). Flexible leasing terms, no deposit, no agency fee and no management cost. Stay with us and make your home away from home to enjoy our hotel service and facilities with flexible monthly terms.

Services and facilities

All rooms are equipped with WiFi access, LCD TV with satellite TV channels. Guests can enjoy a wide array of daily necessities, includes individually thermostat control, in-room electronic safe and hairdryer, self-service laundry, 24-hour security and surveillance cameras and 24-hour hotel concierge and front desk service. Our comprehensive recreation facilities include 25-meters outdoor swimming pool and fully equipped fitness centre with sauna service.

Information

- Gross Size:** 240 – 1,200 sq. ft.
- No. of rooms:** 719
- Contract term:** 30 consecutive nights
- Monthly rate:** From HK\$18,500 nett
(Subject to change without prior notice)
- Address:** 665 King's Road, North Point, Hong Kong
- Tel:** (852) 2185 2822
- WhatsApp:** (852) 6340 3296
- Email:** servicedsuites@harbour-plaza.com
- Website:** <http://www.harbour-plaza.com/hpnp>



Deluxe Side Harbour View Studio

Hotel Alexandra



Hotel Alexandra, the newest addition to the fine line of established hotels managed by Harbour Plaza Hotels & Resorts, is a one-of-its-kind design-led hotel intertwining the affluent lifestyle of the Victorian era with levels of personalised service and amenities.

Location & accessibility

Conveniently located at the heart of Hong Kong Island on the North Point waterfront, the newly-built Hotel Alexandra is a 2-minute walk from the MTR Fortress Hill station which offers easy access to different parts of the city. Hotel guests are just a stroll from an exciting selection of cafés, restaurants, retail shops, and sight-seeing attractions.

Services and facilities

Designed for varying needs, Hotel Alexandra offers 840 artisanal rooms and comfortable suites, with a wide range of room categories that can accommodate between 2 to 6 people. Besides, all new suites feature wood grain floor tiles and individual ventilation system. Benefitting from its prime

location, all rooms command stunning city or harbour views, coupled with comprehensive services and amenities.

As a necessity of the modern lifestyle, high-speed WiFi is equipped in every room, together with individually controlled air conditioning, a 43" LED HDTV, mini-refrigerator, electronic safe, as well as coffee and tea making facilities. For home cooks, an in-room microwave (upon request) and electric kettle are also available.

Aside from the all-rounded amenities, the hotel also presents a wide array of services, including a choice of work desk or bed sofa, round-the-clock concierge and security services, laundry service (charge by the pound), housekeeping service and a wake-up call, to further boost guest's living quality. What's more, guests can also enjoy a special discount on private dining, business centre, laundry, pressing and dry cleaning services. The grand ballroom and multi-purpose function rooms are also available for hosting special functions. To stay healthy, guests can avail of the well-equipped Fitness Centre or enjoy a refreshing dip at the outdoor swimming pool.



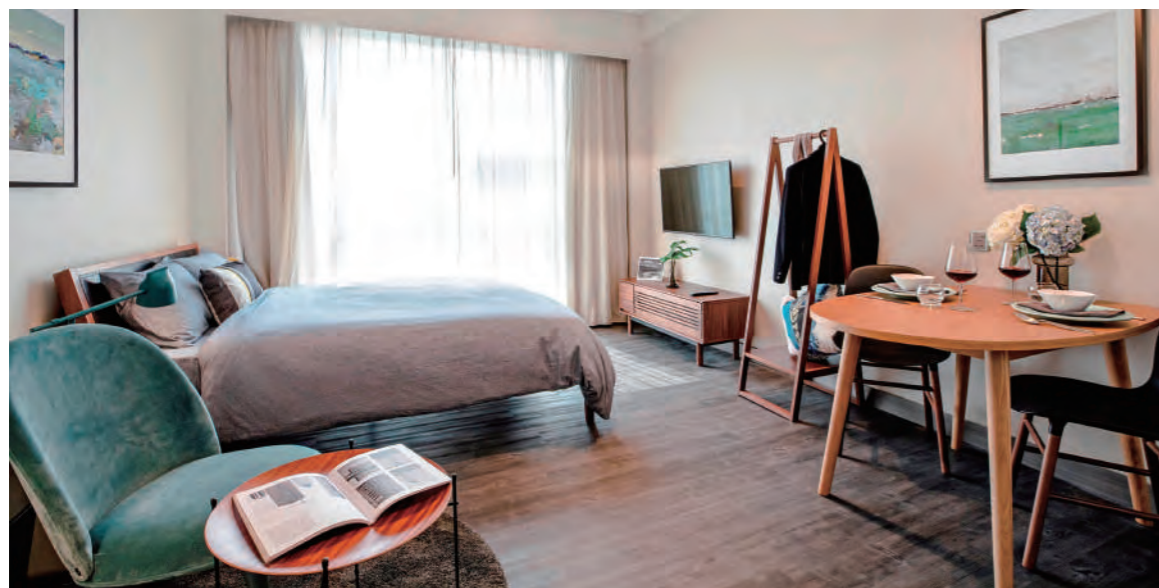
Information

Gross Size: 226 – 463 sq.ft.
No. of rooms: 840
Contract term: 30 consecutive nights
Monthly rate: From HK\$18,888
Address: 32 City Garden Road, North Point, Hong Kong (MTR Fortress Hill Station, Exit B)
Tel: (852) 3893 2888 / 3893 2808
Fax: (852) 3893 2800
Email: monthlystay@hotelalexandrahk.com
Website: <https://hotelalexandrahk.com/>



Kornhill Apartments

KORNHILL APARTMENTS | 康蘭居



A popular choice for those looking for a homey abode on Hong Kong Island, Kornhill Apartments provides top-notch resort facilities, together with attentive service, relaxing atmosphere, and contemporary decor.

Accessibility

A prime attraction of Kornhill Apartments is its convenient connections through an extensive and efficient transport network, as the adjacent Tai Koo MTR, bus, and tram stations provide excellent public transport coverage, while the Island Eastern Corridor and the Eastern Harbour Tunnel put you in touch with other parts of the city with ease.

Those on business will be in close proximity to the modern office complex on Island East. Kornhill Plaza is loaded with a plethora of dining, shopping, and recreational ideas, including a MX4D Cinema.

Services and facilities

At Waterfall on the 9th floor, residents can unwind in the indoor swimming pool, sauna, steam room, and Jacuzzi. Other sporting facilities include a gym, ball courts, and table tennis area.

Residents enjoy scheduled room cleaning service, and 24-hour concierge service. There is a self-service laundry room with ironing facilities, car parking spaces, and an airport limousine service.

Designed for singles as well as family, the 450 units in Kornhill Apartments range from studio to three-bedroom suites, with smoking and non-smoking floors, and even specific layout for handicapped patrons.

For many, a kitchen is fundamental for a homey stay. Even for the 400 sq. ft. studio flat, there is a handy, fully-equipped kitchenette. Other appliances include microwave



oven, a refrigerator, and electric kettle, and a basic dining set.

All units feature a widescreen LCD TV, with access to local, satellite, and TV channels. Complimentary Wi-Fi provides excellent connection, as well as IDD telephone and direct-dial-in telephone with voice mail system. There is also an electronic safe for added security.

Information

- Gross Size:** 400-1,250 sq.ft.
- No. of rooms:** 450
- Contract term:** 1 month minimum
- Monthly rate:** HK \$19,000 - \$71,300
- Address:** 2 Kornhill Road, Quarry Bay
- Enquiries:** (852) 2137 8101
- Email:** kornhillapts@hanglung.com
- Website:** www.kornhillapartments.com



Leasing Enquiries
(852) 2137 8101
Viewing by appointment only

2 Kornhill Road, Quarry Bay
kornhillapts@hanglung.com
www.kornhillapartments.com

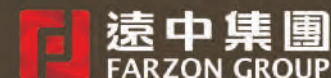


**EIGHT
KWAI FONG**
Happy Valley

URBAN VALLEY LIVING



8kwaifong.com.hk
2818 1388



District: Wong Nai Chung | Name of the street and the street number: 8 Kwai Fong Street | The address of the website designated by the Vendor for the Development for the purposes of Part 2 of the Residential Properties (First-hand Sales) Ordinance: <http://www.8kwaifong.com.hk> | The photographs, images, drawings or sketches shown in this advertisement/promotional material represent an artist's impression of the development concerned only. They are not drawn to scale and/or may have been edited and processed with computerized imaging techniques. Prospective purchasers should make reference to the sales brochure for details of the development. The vendor also advises prospective purchasers to conduct an on-site visit for a better understanding of the development site, its surrounding environment and the public facilities nearby.

Vendor: Land Source Investment Limited, East Kind Development Limited, Polyworth Limited, Peats Limited | Holding company of the vendor: Land Source Investment Limited, Pro Treasures Limited, Farzon Bravo Holding (Singapore) Pte. Ltd., Farzon Able Limited and Farzon Able Group (PTC) Ltd. | Holding company of the vendor: Polyworth Limited, Pro Treasures Limited, Prosperity Developments Limited, Farzon Bravo Holding (Singapore) Pte. Ltd., Farzon Bravo Limited and Farzon Able Group (PTC) Ltd. | Holding company of the vendor: Polyworth Limited, Pro Treasures Limited, Prosperity Developments Limited, Farzon Bravo Holding (Singapore) Pte. Ltd., Farzon Bravo Limited and Farzon Able Group (PTC) Ltd. | Authorized person for the Development: Mr. Lam Chi-ling (Wai) | The firm of corporation of which an Authorized person for the Development is a proprietor, director or employee or his or her professional capacity: ASC Design Limited | Building contractor for the Development: Build King Construction Limited | Firm of solicitors acting for the owner in relation to the sale of residential properties in the Development: H. Y. Leung & Co., S.P. | Any authorized institution that has made a loan or has undertaken to provide finance for the construction of the Development: Not applicable | All contents of this advertisement are for reference purposes only and do not constitute an offer and should not be construed as constituting any contractual offer or representation, underwritten or otherwise, in any express or implied form. Prospective Purchasers are advised to refer to the sales brochure for details of the Development. | This advertisement is published by the Vendor or with the consent of the Vendor. | Please refer to the sales brochure for details. | Date of Printing: 11/11/2024

EIGHT KWAI FONG HAPPY VALLEY



Luxury living in a coveted locale

Farzon Group has launched EIGHT KWAI FONG HAPPY VALLEY, their first-ever property project in Hong Kong. Acquired from New World Development, one of Asia's most celebrated developers, the property is rare gem, located in one of the city's most coveted locations, Mid-levels East Happy Valley.

Featuring a classy and sophisticated construction of wood cladding to the façade matched with emerald-like greenery, the 28-floored residence comprises 139 luxury studios and 1-bedroom units, ranging from 258 to 428 sq ft, best suited for single professionals and small families. Each unit boasts a private balcony and seamless sleek floor-to-ceiling windows, coupled with a highly practical unit design.

The residence features only the highest quality of fittings, including German-brand Miele's induction cooker, cooker hood, microwave oven; Gorenje's refrigerator, washer dryer; and Stiebel Eltron's or Siemens' electric water heater.

The luxurious clubhouse, Club Eight, features a fully equipped state-of-the-art 24-hour gym and a chic common room that accommodates up to 10 people. The room features a fully-equipped marbled kitchen and is perfect for small gatherings. Parties can also be organized outdoor as the room connects to a private garden fitted with a barbecue grill.



Refined individuals with an artistic and cultural bent can take advantage of the Reading Lounge. To unwind and clear minds, visit the Rooftop Garden for a sweeping mountain view. To escalate the fun, Club Eight will offer a fun range of workshops exclusively for residents in the future.

To commemorate the launch of Farzon Group's inaugural property project in Hong Kong, the group has exceptionally offered a first-rate butler service – Butler Asia for the first 50 buyers.

A sense of home in the center of the city that never sleeps

Situated in the esteemed upper-class neighbourhood of Happy Valley, EIGHT KWAI FONG HAPPY VALLEY connects residents to a variety of transportation mode to multiple districts in the city. Residents can reach the entertainment and commercial hubs of Causeway Bay and Wan Chai in 6 minutes, or the financial hubs of Admiralty and Central in only 8 minutes.

For families, EIGHT KWAI FONG HAPPY VALLEY is situated within the POA School Net Number 12. The district embraces an assemblage of prestigious schools, including St. Paul's Primary Catholic School, Marymount Primary School, Queen's College, French International School and Hong Kong Japanese School. The residence is also pet-friendly.



Information

- Gross Size: 258-428sq.ft
- No. of rooms: 139
- Contract term: 1 year minimum
- Monthly rate: HK\$15300up
- Address: 8 Kwai Fong Street, Happy Valley
- Enquiries: (852) 2818 1388
- Whatsapp: (852) 6346 0288
- Website: www.8kwaifong.com.hk



Hotel Madera Hollywood



Embrace grandeur and chic living at Madera Hollywood whilst immersing in the Hollywood style glamour in the heart of Hong Kong. Inspired by the golden age of Chaplin, Monroe, Hepburn, Sinatra, and Crosby, this boutique hotel is designed in the Hollywood Regency style, known and beloved by stars for its boldness and sophistication.

Comprising the 580 sq ft one-bedroom Deluxe Suite and the 750 sq ft one-bedroom Grand Deluxe Suite, all 38 spacious suites feature the finest amenities for discerning travelers to savor old-world charm in modern comfort. No matter you are looking for a luxurious escape or an extended stay, be ready to indulge in luxury and style at this brand new iconic hotel.

Services and facilities

The hotel features a comprehensive range of amenities, including custom made kitchenette with induction cooker, mini fridge, microwave oven with grill, Nespresso coffee machine, electric kettle and utensils; washing-drying machine in room; handy phone with free local & international calls and internet connection; thermo ventilator; LED TVs (with 55 Now TV channels including Sports channel); and JBL speakers.

Guests can also enjoy thoughtful services including room cleaning services (except Sundays & public holidays); linen change once per week, towel change thrice per week; 24-hour guest services team; 24-hour concierge; housekeeping service; limousine service; wake-up call; baby cribs; extra bed; and luggage storage. Utility charges are included. Pantry facilities are also available for long-stay guests.

For those who want to stay fit, take advantage of the hotel's 24-hour gymnasium to get your body in its best shape. You can also unwind at the Hollywood Lounge after an exhausting day.

What's more, it is also the first hotel in Hong Kong that adopts the 'Raze Nano-Photocatalyst' technology to medically

disinfect all premises and facilities.

Accessibility

Located at the corner of Peel Street and Hollywood Road, two of colonial Hong Kong's oldest streets built in the 1840s, Hotel Madera Hollywood is situated in the heart of the thriving SoHo district. It is a 45-minute ride to the Hong Kong International Airport with taxi or Airport Express; or a 5 to 10-minute walk to Lan Kwai Fong and Central Business District. You can reach the Hong Kong Convention and Exhibition Centre by MTR within 20 minutes.



Information

Gross Size:	580 – 750 sq.ft.
No. of rooms:	38
Contract term:	1 month minimum
Monthly rate:	From HK\$45,000 – \$60,000
Address:	53-55 Hollywood Road, Central, Hong Kong
Enquiries:	(852) 3913 2888
Fax:	(852) 3913 2800
Email:	mhwinfo@maderagroup.com
WeChat/ WhatsApp/ Line:	(852) 6590 5453
Website:	www.maderagroup.com/hollywood



Address
53-55 Hollywood Road,
Central, Hong Kong

Tel
(852) 3913 2888

Email
mhwinfo@maderagroup.com

Website
www.maderagroup.com/hollywood



CM+ Hotels and Serviced Apartments



Conveniently situated in the heart of the Sheung Wan District, CM+ Hotels and Serviced Apartments is near to MTR stations, the Hong Kong Macau Ferry Terminal, Hong Kong International Airport, and shopping hotspots. It is ideal for ones that love to balance work, travel, shopping and culinary indulgence.

Accommodation and facilities

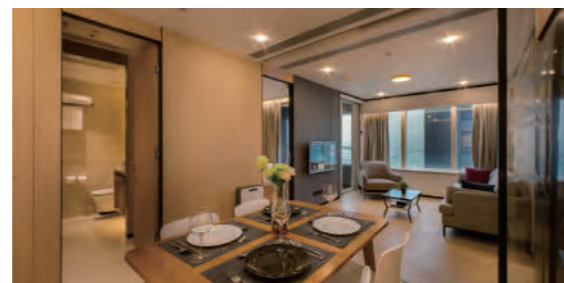
Situated in the Central Business District of Hong Kong, CM+ Hotels and Serviced Apartments consist of North Tower and South Tower, with a total of 135 rooms. Debuted in 2016, the North Tower features 54 Deluxe Studio and 1 bedroom, overlooking an unobstructed harbour view. Meanwhile, the South Tower, launched in 2018, offers 81 harbour view and city view deluxe rooms. The hotel is adorned with modern furnishings and kitchenware, as well as simplicity style furniture.

The serviced apartments are fully-equipped with high speed WiFi, Now TV International Channels, vending machines, and coffee machines under a smoke-free environment. After a long hectic day, those who stay in South Tower One Bedroom can unwind and dip in the Japanese-style bathtub installed whilst those who stay in North Tower rooms can unwind with the panoramic Victoria Harbour view. In addition, 2-in-1 washer and dryer, and air purifiers are installed in all rooms. South Tower Harbour View Two Bedroom with Two Bathrooms and Balcony rooms are also available.

Housekeeping services, 24-hour security guard services, and daytime front desk services are available as CM+ takes residents' needs as its first priority. Those who want to stay in touch with colleagues, friends and family, can take advantage of the hotel's complimentary broadband service and complimentary local calls. In addition, gymnasium room is available for those who want to stay fit.

Location and accessibility

Located in the heart of the Sheung Wan District, CM+ boasts its convenient location. The hotel is a mere 3-minute walk to Sheung Wan MTR station exit C and the Hong Kong Macau Ferry Terminal, and a 30-minute drive to Hong Kong International Airport. For those who want to be immersed in this vibrant metropolis, the hotel is within walking distance to renowned malls include ifc mall and the energetic SOHO district.



Information

Gross Size: 630 – 1,412 sq. ft.
No. of rooms: 135
Contract term: 1 day minimum
Monthly rate: HK\$32,000 - \$78,800
Address: 16 Connaught Road West, Hong Kong
Enquiries: (852) 3560 6738 / 3709 6600
Fax: (852) 3709 6622
Email: cmplus@cmpd.com.hk
Website: www.cmplus.com.hk



CM+ Hotels & Serviced Apartments



NORTH TOWER

- Full Harbour View / Harbour View Studio
- Full Harbour View One Bedroom
- Full Harbour View Connecting Room



SOUTH TOWER

- Harbour View Studio
- City View Studio
- Harbour View One Bedroom
- City View One Bedroom
- City View Connecting Room
- Harbour View Two Bedroom with Two Bathrooms and Balcony

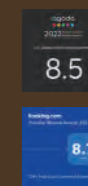
RECOMMEND

Viewing by Appointment only



16 Connaught Road West, HK (Sheung Wan MTR Exit C)

Leasing Enquiries : 3560 6738 | 37096600
 Email : cmplus@cmpd.com.hk



www.cmplus.com.hk

Photo for Reference Subject to Contract.

Shama Serviced Apartments



For those looking for an exceptional home that unites comfort and style, Shama Serviced Apartments, Asia's leading premier serviced apartment provider under the ONYX Hospitality Group, offers superior lifestyle accommodation solutions tailored to help you adapt to the city's pace with ease.

At Shama, we prioritise personalised service to make our tenants feel at home. Every resident is designated a dedicated housekeeper who takes the time to understand their individual preferences and routines, ensuring that the residence is cleaned and cared for. Our commitment to this excellence is aimed at crafting a cosy and personalised experience for each guest.

Accessibility

To provide a rich Hong Kong experience for residents, Shama's 6 properties are located in the heart of the city's prime business districts, including Central, Fortress Hill, North Point, Mid-levels, and Tsim Sha Tsui, benefitting from convenient transport links, proximity to cultural and entertainment hubs, and easy access to grocery stores and culinary hotspots.

Services and facilities

To ensure an exceptional living experience, the serviced apartments offers an incredible range of services, including a personalised housekeeping service, 24-hour concierge service, professional laundry and dry-cleaning services, self-service

laundry facilities, and 24-hour security. Pets are allowed at designated floors at Shama Fortress Hill and Shama Tsim Sha Tsui.

Through Shama Social Club, guests are granted everything they need to fast-track their social life, from hood tours to lifestyle venues and amenities in the neighbourhood, and residents' exclusive benefits to hidden gems in the area. Regular events, games, parties and events plus a whole host of other benefits are just a click away.

Shama Central Hong Kong

With extensive room upgrade expected to be completed by the end of 2022, the comprehensive room enhancement Shama Central Hong Kong aims to present an elevated and refined "home-away-from-home" experience with elevated taste. Each minimalist-style room will come with a smart TV, in-room washing and drying machine, and all-new kitchen appliances.

Located in the heart of Central, the 56 chic serviced apartments provide calming retreats in the perfect location. The city's vibrant neighborhood boasts traditional market stalls, fashionable restaurants and boutiques, offering a slice of Hong Kong life.

Information

Gross Size:	320 - 2,000 sq. ft.
No. of rooms:	385
Contract term:	1 night minimum
Monthly rate:	HK\$25,500 - \$100,000
Address:	Unit 2801, Vertical Sq. 28 Heung Yip Road, Wong Chuk Hang, Hong Kong
Enquiries:	(852) 3100 8555
Email:	reservations.hongkong@shama.com
Website:	www.shama.com



Freedom To Explore

Epitomising comfort, style and luxury, Shama offers peaceful residences in prime locations with everything you need to feel like home



shama
Freedom to Explore

(852) 3100 8555

reservations.hongkong@shama.com

Managed by ONYX Hospitality Group

www.shama.com | Hong Kong | Hangzhou | Daqing | Bangkok

The Unit Serviced Apartments



The Unit Davis

The Unit is the new serviced apartment collection of Emperor Hotels Group, comprising three properties in prime locations - Causeway Bay (The Unit Morrison Hill), Happy Valley (The Unit Happy Valley) and Kennedy Town (The Unit Davis) – and providing guests with absolute convenience in shopping, entertainment, dining and nightlife experiences right at your doorsteps. The exquisite, fully-furnished apartments offer flexible lease terms with diversified services and facilities.

Accessibility

Located in very accessible neighborhoods, the properties are close enough to the action but also far enough for city dwellers to relax and unwind.

The Unit Morrison Hill is surrounded by an endless list of luxurious boutiques and gourmet restaurants, providing millennials with a trendy, bon vivant lifestyle.



The Unit Happy Valley

The Unit Happy Valley resides in a community popular among celebrities and elites for its verdant greeneries, pleasant ambiance and handy amenities.

The Unit Davis situated in Kennedy Town, a charismatic community filled with character and eccentric flair, the apartments enjoy countless dining options nearby spanning local speakeasy to Michelin-starred restaurants along with a convenient transportation network – the MTR station is only a 2-minute walk away.

Services and facilities

The Unit Serviced Apartments have 143 units available, ranging from studio to 2-bedroom layout units with amenities such as rooftop garden, private terrace, gymnasium and private laundry to provide a flexible, refined living experience that is affordable – all utility bills are included in the accommodation charges.

The properties vary to suit the different tastes and requirements of discerning travelers expatriates and families of all sizes. The Unit Morrison Hill – the first-ever serviced apartments of Emperor Hotels Group – is equipped with furniture and fixtures of tasteful contemporary design. A perfect abode for families with its rooftop terrace and barbeque facility crafted for a unique experience.

Enjoy the convenience of smart living at The Unit Happy Valley with its innovative home design elements that provide one-stop hospitality services and mobile convenience at your fingertips. A comfortable and high-quality stay is guaranteed with bespoke services and superb amenities including 24-hour private gym rooms and laundromat.

The Unit Davis is the newest addition to the line of properties. Its 3.15-metre clear height design creates a commodious sensation. Each unit is furnished with first-class kitchen appliances and bathroom fittings together with an independent washer-dryer. The property also boasts all-rounded utilities and other facilities such as multi-purpose room and many more perks and privileges.

The trio properties of The Unit deliver impeccable services throughout the stay for residents' hassle-free modern living. All Units feature complimentary high-speed Wi-Fi as a necessity of modern lifestyle; LED TV and air-conditioning with climate control. To maintain a pristine state of the units, housekeeping service once a week is provided (on reservation). What's more, professional services are available in the form of 24-hour security and concierge service.

Information

- Gross size:** 170 – 680 sq. ft.
- No. of rooms:** 143
- Contract term:** 1 month minimum
- Monthly rate:** HK\$10,000 up
- Address:** 46-48 Morrison Hill Road, Causeway Bay, Hong Kong (The Unit Morrison Hill)
17 Yik Yam Street, Happy Valley, Hong Kong (The Unit Happy Valley)
22 Davis Street, Kennedy Town, Hong Kong (The Unit Davis)
- Enquiries:** (852) 2267 8901
- Email:** info@TheUnit.com.hk
- Website:** www.TheUnit.com.hk



The Unit Davis



The Unit Happy Valley



The Unit Morrison Hill

Regent Heights Serviced Apartment



Located in Causeway Bay, a vibrant district on Hong Kong Island, Regent Heights Serviced Apartment offers unrivaled convenience, together with well-furnished apartments, attentive service and impeccable amenities, making it a perfect abode for city dwellers who wish for effortless work-life balance.

Location and accessibility

Conveniently situated in Causeway Bay, Regent Heights offers a vibrant cosmopolitan lifestyle with seamless connectivity to every part of Hong Kong. Just a 5-minute stroll is all it takes to get you to the MTR station that puts you in easy touch with all parts of the city, including the CBD, the Kowloon Peninsula and the International Airport. Regent Heights is surrounded by a wide range of entertainment options; mere minutes away are upscale shopping malls - Times Square, SOGO, Hysan Place - the central library, sports grounds, grocery stores of local and international brands, as well as dining options spanning Michelin-starred restaurants to local speakeasy.

Services and facilities

Measuring from 218 sq. ft to 688 sq. ft, its 176 studios and 2-bedroom apartments are fully-furnished, paired with diversified designs to meet guests' varying needs and refined taste for living. For those who wish for more space, limited units featuring a spacious

balcony are available. Every room features modern furniture and appliances, as well as a fully-equipped kitchenette with hot plate, electric kettle, fridge, microwave and a range of tableware.

Regent Heights provides attentive in-room services to ensure a comfortable and homey stay for all guests, including complimentary high-speed Wi-Fi access, cable TV, individual air-conditioning, laundry service. Professional services are also available in the forms of day-time reception, 24-hour security service and round-the-clock lobby support with Wi-Fi and wireless chargers. Guests can also avail of facilities including the self-laundry room on 2/F, pantry, in-room digital safety box, iron and ironing board. To maintain a pristine state of the rooms, regular maid cleaning services are provided twice a week.

Considerate of guests' needs to refresh and recharge, Regent Heights provides impeccable amenities and abundant space for exercise and leisure. Its wellness club boasts state-of-the-art fitness equipments for guests to stay active and healthy. An exclusive pet-friendly floor that caters for a wide range of pets is thoughtfully designed with rooms tailor-made for guests' furry host friends and arranged with special cleaning. An expansive communal rooftop garden is also open to all staying guests. They may take a respite and escape from the hustle and bustle of city life in the outdoor seating with their relatives and pets.



Information

Gross Size:	218 - 688 sq.ft.
No. of rooms:	176
Contract term:	1 month
Monthly rate:	HK\$16,000 - HK\$38,500
Address:	11-17A Tung Lo Wan Road, Causeway Bay, Hong Kong
Enquiries:	(852) 2895 2555
Email:	regentheights@earlylight.com.hk
Website:	www.regentheights.com.hk



Apartment O

APARTMENT 



While the vintage-inspired Apartment O at Causeway Bay transfer guests back to 1930s Hong Kong and Shanghai, Apartment O at Happy Valley offers an unparalleled living experience with its stylishly modern apartments.

All apartments in Apartment O at both locations come with complimentary WiFi and housekeeping service. For entertainment, residents can access Netflix and free TV channels.

Residents can also enjoy a wide range of facilities, including 5-star hotel gym facilities, a lounge, business centre, rooftop BBQ facilities and more.

Apartment O at Causeway Bay

Situated in a quaint area in the midst of bustling Causeway Bay and comprising just 15 units, these pet-friendly apartments range from one to two bedroom options which include a terrace or balcony, an ensuite master bathroom with Jacuzzi, a fully functional kitchenette and separate dining area. The rooms are themed in two styles: Classic Shanghai and Old Hong Kong.

The apartments are in close proximity to Causeway Bay MTR station and some of the city's top-notch shopping centres – Hysan Place and Times Square.





Apartment O at Happy Valley





Apartment O at Happy Valley comprises 22 fully furnished units. Overlooking the racecourse, these comfy apartments offer ultimate privacy with merely a unit per floor.

Strategically situated in Happy Valley, a popular residential district favored by expats, local celebrities and pet owners in Hong Kong, Apartment O at Happy Valley provides luxury and private homes alongside an upscale suburbia neighbourhood brimming with trendy cafes, restaurants, hip bars, and boutiques.



Information

Address 5 Hoi Ping Road, Causeway Bay
No. of units 15
Area 1,020 - 1,500 sq. ft.    
Layout 1 - 2 bedrooms

Address 25 Wong Nai Chung Road, Happy Valley
No. of units 22
Area 670 sq. ft.    
Layout 1 bedroom

Enquiries (852) 9858 0812 / (852) 9165 6769
Website www.apartmento.hk
Email info@apartmento.hk

APARTMENT



Pet-friendly | Serviced | Furnished | Flexible lease terms





Signature Design | Pure Elegance



 5 Hoi Ping Road, Causeway Bay



 25 Wong Nai Chung Road, Happy Valley | *Luxury | Racecourse View*

Leasing enquiries

 Causeway Bay (852) 9858 0812
 Happy Valley (852) 9165 6769

 info@apartmento.hk
 www.apartmento.hk

 HKApartmentO
 [apartmento_hk](https://www.instagram.com/apartmento_hk)

Soho 69

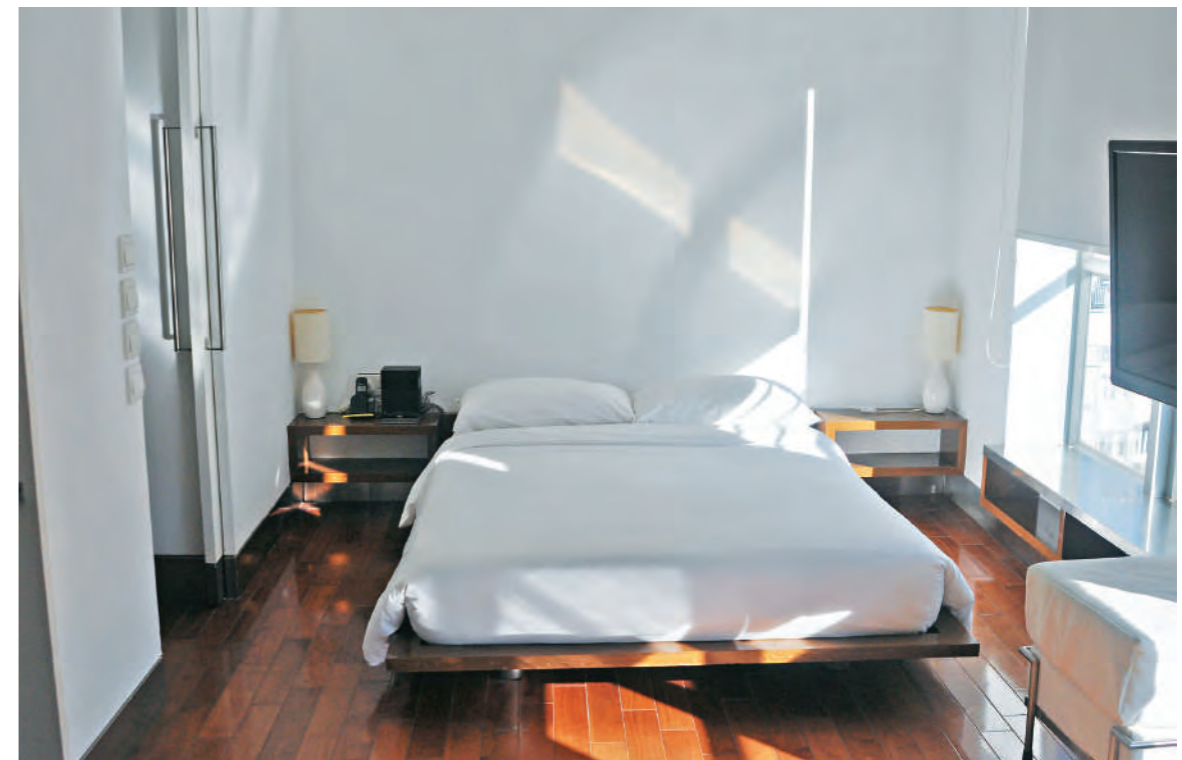


Exuding the vitality of city living, Soho 69 Serviced Apartment is a fully furnished apartment composed of modern fittings and furniture. Located at the legendary Hollywood Road in Central, the property enjoys easy connectivity on the nearby Mid-Levels pedestrian escalator. The residence is managed by Soho Management Limited which is a member of the Beautiful Group.



Accessibility

Situated in the midst of Central, residents of Soho 69 bathe in urban vibes. The Central Business District hums with dynamism and carries the finest restaurants and busiest shopping malls in the city. The Central MTR station, Airport Express and Star Ferry Terminal are only a few minutes' walk away, giving residents quick access to the rest of the city.



Services and facilities

Coming in one bedroom and studio style, units at Soho 69 are fully furnished and comprise comfortable double-bed, wardrobe, lavish sofa-set, TV and 48 basic channels, direct telephone line, dining and coffee tables. The kitchenette has been installed with cooker, microwave oven, refrigerator, crockery and cutlery. The size of studio suites starts from 380 sq. ft, and all the one-bedroom suites are 650 sq. ft.

Rooms receive general cleaning service and towels changed twice a week, and linens once a week. On the top floor of Soho 69 is a self-service Laundromat, but valet laundry with a contracted Laundromat is available at a discounted price.

Information

Gross Size:	380 - 650 sq. ft.
No. of rooms:	55
Contract term:	1 month minimum
Monthly rate:	HK\$17,000 - HK\$32,000
Address:	69 Hollywood Road, Central, Hong Kong
Enquiries:	(852) 2352 8833
Email:	Soho69@beautiful.com.hk
Website:	www.thesoho.com.hk



Loplus Serviced Apartments



Loplus Serviced Apartments offers a unique five-star lifestyle through its opulent interior design, exquisite in-room amenities and exceptional service. It comprises two properties in the Wan Chai district - Loplus@Hennessy & Loplus@Johnston, providing a wide range of room types - from studio to three-bedroom suites – that meets various needs. Guests can leverage the full support of the properties’ professional teams.

Accessibility

Located in the vibrant Wan Chai district, both Loplus Serviced Apartments enjoy excellent connectivity, and are within easy walking distance to the MTR station, putting guests in touch with other key districts in the rest of the city. The CBD, for instance, is just two stops away, where they can also make a convenient connection with the Airport Express rail service.

At both locations, residents are blessed with a plethora of dining and shopping options virtually at their doorstep. They are spoiled for choice ranging from high-end boutiques, Michelin-starred eateries, to cinemas and premium shopping malls such as Times Square, Hysan Place and Sogo.

Services and facilities

Guests can enjoy hassle-free living at Loplus as they are in the good hands of the friendly and helpful Guest Service Team. The contemporary homes have been thoughtfully designed to provide the ultimate homey comforts, featuring free in-room WiFi, HD LED TV with international channels and a handy kitchen. Selected suites come with a versatile walk-in closet, washer and dryer, air-conditioner with climatic control, and laminated windows that ensure tranquility.

Apart from tastefully-furnished interiors, the apartments feature state-of-the-art facilities. Guests can enjoy exclusive access to the Gym, Guest Service Centre, Sky Garden, and well-equipped Function Room where residents can hold private parties with friends. Complimentary services encompass housekeeping service, 24-hour concierge and laundry facilities.



Information

Gross Size: 239 - 1,373 sq. ft.
No. of rooms: 279
Contract term: 1 month minimum
Monthly rate: HK\$24,800 – HK\$100,400
Address: 388 Hennessy Road, Wan Chai / 5 Luard Road, Wan Chai
Enquiries: (852) 2625 2323 / 8202 3377
Email: enquiry@loplus.com.hk
Website: www.loplus.com.hk



Serve with Passion

ALL INCLUSIVE



Fully equipped kitchen



In-room 2-in-1 washer



Unique & versatile walk-in closet



Guest Service Centre with Executive Lounge



Gymnasium



Sky Garden



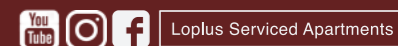
Visit www.loplus.com.hk



+852 2625 2323 / 8202 3377

Loplus@Hennessy, 388 Hennessy Road, Wan Chai (5 mins' walk to Causeway Bay MTR station)

Loplus@Johnston, 5 Luard Road, Wan Chai (3 mins' walk to Wan Chai MTR station)



Loplus Serviced Apartments

Yin Serviced Apartments



managed by XIN



Thoughtfully named after a Chinese character meaning both solicitous and prosperous, Yin Serviced Apartments is the ultimate combination of luxurious aenvironment of unparalleled warmth and comfort.

Accessibility

Occupying a coveted address in the heart of Central district, Yin promises excellent connectivity. Only minutes away from the vibrant clubbing hotspot of Lan Kwai Fong and the renowned dining hub of SoHo, residents will find a colorful array of entertainment and dining options right at their doorstep. High-end shopping malls such as The Landmark and ifc mall are within walking distance, ensuring that all everyday needs are met with absolute ease. The extensive transportation network, including MTR, Airport Express, and numerous bus routes, effectively connects Yin to all parts of the city.

Services and facilities

All quality suites are generously laid out and superbly furnished. The luxurious Garden Suite comes with an exclusive wooden decked podium, ideal for residents desiring additional space to unwind. In-room entertainment comprises an iDTV with international channels. A fully-equipped kitchen with quality appliances and utensils makes home cooking a breeze. Deluxe Bellora bedding and Simmons mattress ensure quality and restful sleep. Daily housekeeping is complemented by twice a week linen change services. Free WiFi combined with complimentary mail and message delivery helps to keep residents connected. Residents also enjoy exclusive access to a state-of-the-art gym and a cozy lounge featuring a coffee corner and business center.



Information



- Gross Size:** 740 – 862 sq. ft.
- No. of rooms:** 42
- Layout:** 1 bedroom / studio
- Contract term:** 1 day
- Monthly rate:** HK\$32,000.00 - \$50,000.00 per month
- Address:** 97A Wellington Street, Central, Hong Kong
- Enquiries:** (852) 8200 1100 / 2851 6966
- Fax:** (852) 2851 6766
- Email:** leasing@xin.com.hk
- Website:** www.xin.com.hk/yin-serviced-apartments



MANAGEMENT LIMITED

WWW.XIN.COM.HK
THE CONSTANT PURSUIT OF EXCELLENCE

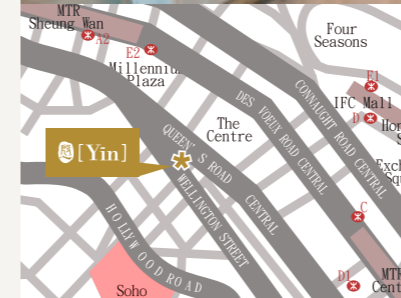


YIN SERVICED APARTMENTS

97A Wellington Street,
Central, Hong Kong

Service Hotline
+852 2851 6966

Email
service@xin.com.hk

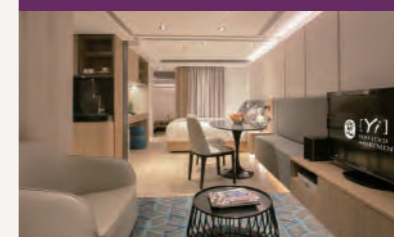


YI SERVICED APARTMENTS

10-12 Chatham Court,
Tsimshatsui, Hong Kong

Service Hotline
+852 2735 1882

Email
service@xin.com.hk



XI HOTEL

7 Minden Avenue, Tsimshat
Kowloon, Hong Kong

Service Hotline
+852 2739 7777

Email
rsvn@xihotel.com.hk





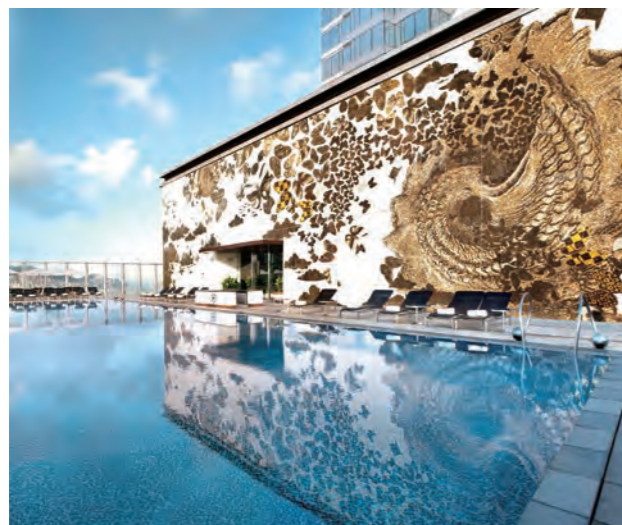
Serviced Suites

Kowloon & New Territories

The HarbourView Place @ICC megalopolis



Echoing the success of its sister project Four Seasons Place, The HarbourView Place offers breathtaking views with marvelous service and incredible access to Hong Kong's greatest features. Located on the 50-70th floors of The Cullinan II, The HarbourView Place boasts unsurpassed panoramic views of the world-renowned Victoria Harbour, promises a stylish, modern living experience complemented by five-star services and amenities.



Accessibility

Conveniently located atop the Kowloon MTR / AEL Station and adjoining the Express Rail Link at Hong Kong West Kowloon Station, The HarbourView Place boasts a prime location for discerning professionals with an exquisite transport network to Mainland China and the world. Guest can access Hong Kong International Airport within 22 minutes and Central district within 5 minutes by train.

Nestled between Hong Kong's tallest building, the International Commerce Centre (ICC), The Ritz-Carlton Hong Kong, W Hong Kong, and ELEMENTS mall as well as West Kowloon Waterfront Promenade, The HarbourView Place is in an ideal location for luxury and leisure – with an abundance of entertainment, shopping and dining options for guests to enjoy. From exquisite Michelin-star dining experiences to a portfolio of luxury shopping brands and cultural activities, The HarbourView Place delivers impressive lifestyle just a doorstep away to ensure a comfortable and tasteful stay.

Services and facilities

The 266 serviced suites, which range from 464 sq ft for studios, to three bedrooms up to 1,623 sq ft, and Presidential Suites, are immaculately designed to include a variety of convenient provisions that keep guests entertained and at ease. A comprehensive kitchenette with washing and drying unit, household refrigerator, induction hob and an array of crockery, glassware, tableware and utensils are provided for all guests.

Apart from kitchen essentials, rooms include world-class entertainment with LED HDTV, DVD player, and a comprehensive home theatre system; and homely touches such as a pillow menu and pillow top Sealy mattress for ultimate comfort in a home away from home.








Beyond the suites there are a variety of exquisite amenities that guarantee entertainment and leisure options for guests, including a rooftop heated pool and Jacuzzi on the 76th floor. Being one of the highest rooftop heated pools in Hong Kong overlooking the city's astonishing skyline, the pool offers a unique swimming experience with a top-of-the-world sensation. To ensure a satisfying all-round guest experience, a 24-hour gymnasium, sauna, multipurpose function room and a cozy reading lounge with internet access are also available.

Delivering impeccable hospitality throughout the visit, The HarbourView Place offers a 24-hour multilingual concierge service, housekeeping services and a team of Guest Liaison Specialists to help guests settle into the city. Personal storage spaces and car parking are available upon request.

Catering to a variety of schedules – from short to long term stays, The HarbourView Place offers flexible contract terms. At The HarbourView Place, guests are promised a stylish living experience complete with world-class facilities and impeccable services. It is an ideal option for professionals and business travelers seeking luxury and comfort in a home away from home.



Information

Gross Size:	464 - 3,270 sq. ft.	
No. of rooms:	266	
Contract term:	1 month minimum (short staying package also available)	
Monthly rate:	HK\$39,000 up	
Address:	Atop Kowloon Station, 1 Austin Road West, Kowloon	
Enquiries:	(852) 3718 8000	
WhatsApp/WeChat/Signal:	(852) 9661 7100	
Email:	enquiries@harbourviewplace.com	
Website:	www.harbourviewplace.com	



Vega Suites



Services and facilities






Vega Suites exudes contemporary chic and elegance. Each suite is exquisitely designed and modernly furnished with top-notch amenities. At every turn, guests can enjoy a beautiful open city view or a partial sea view, along with comprehensive in-room provisions and modern furnishing, with a selection of room types that are equipped with a comprehensive kitchenette including household refrigerator, crockery and utensils, while some also offer a washing and drying unit. Guests can make the most of high quality in-room provisions including LED/LCD TV, while some larger suites are also furnished with a sofa bed in the living room. Wireless broadband internet access is also available to ensure seamless connection.

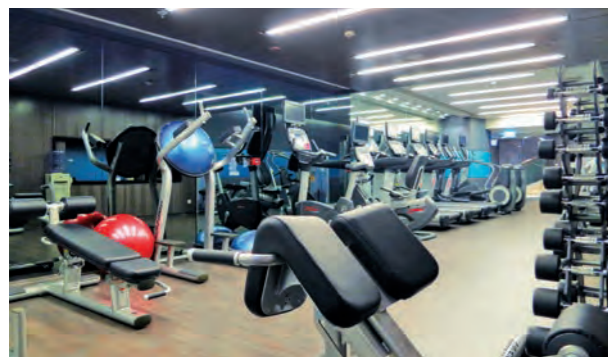
For recreation, guests have access to a wide range of entertainment and leisure facilities. Social hubs like the spacious Green Terrace is available to those who enjoy socializing. Guests who relish in leading a healthy lifestyle can also make use of a workout corner at Vega Suites and recreational facilities like the gymnasium at neighbouring Crowne Plaza Hong Kong Kowloon East. For a luxury experience, car parking spaces are available upon request.

Vega Suites offers suites ranging from studios with kitchenette option to three-bedrooms. Guests can choose from a monthly package with a minimum stay of 1 month, or opt for night stays in specific room types for shorter durations. To ensure the perfect home-away-from-home experience, a 24-hour multilingual concierge service is on hand to offer guests a personalized experience, as well as meticulous housekeeping services.



Information

Gross Size:	367 - 1,560 sq. ft.		
No. of rooms:	476		
Contract term:	1 month minimum (Night stays also available)		
Monthly rate:	HK\$17,500 up		
Address:	Atop MTR Tseung Kwan O Station, 3 Tong Tak Street, Tseung Kwan O		
Enquiries:	(852) 3963 7888		
WhatsApp/WeChat/Signal:	(852) 9731 7188		
Email:	enquiries@vegasuites.com.hk		



Located in a burgeoning neighbourhood of Kowloon East, Vega Suites offers a perfect home away from home experience with unparalleled convenience and tranquil lifestyle with its immaculate furnishings and exceptional service.

Accessibility

Located above the MTR Tseung Kwan O Station and public transport interchange, Vega Suites provides convenient access to the bustling Kowloon East and Island East commercial hubs. Guests can reach Kwun Tong, Kowloon Bay, Quarry Bay and North Point by MTR in 11-15 minutes; while Central and Tsim Sha Tsui are just 25-30 minutes away. With the new Tseung Kwan O – Lam Tin Tunnel and Cross Bay Link, it provides an even more convenient road access between Tseung Kwan O and Kwun Tong. Vega Suites is part of an integrated landmark development complex with international hotel Crowne Plaza Hong Kong Kowloon East and luxury residence The Wings. Within walking distance are trendy shopping malls like PopCorn and PopWalk, bursting with fine dining, elegant boutiques, supermarkets, as well as a diverse range of entertainment options. Guests who enjoy getting close to nature can take a bus to Sai Kung, often known as 'Hong Kong's back garden', for its gorgeous beaches, coastal hikes and stunning sea views.



TOWNPLACE WEST KOWLOON

TOWNPLACE 本舍
WEST KOWLOON

TOWNPLACE is a residential leasing brand of Sun Hung Kai Properties, targeting young professionals to provide dynamic living experience. The mega flagship TOWNPLACE WEST KOWLOON innovatively introduces “Aparthotel”, offering flexible monthly to yearly leasing terms - a hybrid model of hotel (for stays < 31days) and apartment (for stays > 31days) accommodations, with a total of 843 units. The units come in various layouts, mostly Studio and One-Bedroom units, and there are also options for Two and Three-Bedroom units, ranging in size from 243 to 860 square feet.



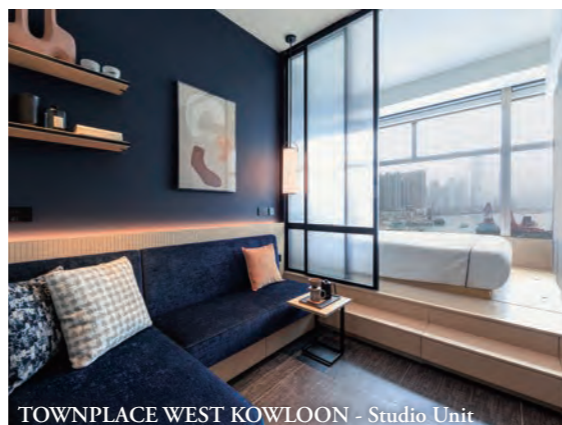
TOWNPLACE WEST KOWLOON - Three-Bedroom Unit

Location & Accessibility

TOWNPLACE WEST KOWLOON is a holistic experience-driven habitat for young professionals and strategically located in West Kowloon. Standing close to MTR Nam Cheong station, just a few steps away from the High Speed Rail and Airport Express, set to become a dynamic business, leisure and transportation hub with fantastic connections to the Mainland China and international destinations. It also offers convenient access to ICC and ifc, two of the world's tallest skyscrapers with grade-A offices. The buzzing West Kowloon Cultural District is a destination for creative activities, you can easily access to the M+ museum, Hong Kong Palace Museum, stylish café, famous restaurants and more.

Services and Facilities

This new mega flagship project offers a hybrid model of hotel (for stays < 31days) and apartment (for stays > 31days)



TOWNPLACE WEST KOWLOON - Studio Unit

accommodations, with a total of 843 units. The units come in various layouts, mostly Studio and One-Bedroom units, and there are also options for Two and Three-Bedroom units, ranging in size from 243 to 860 square feet.

Here also features comprehensive leisure and work facilities, including a 25-meter sky pool on the rooftop overlooking Victoria Harbour, sunbathing loungers, jacuzzi, sauna and steam rooms, commercial grade indoor and outdoor gyms provided by Technogym and SIDEA Fitness, barbecue areas, camping facilities, pet-friendly amenities, social kitchens, party rooms, bar area, function rooms, and event spaces, offering commercial grade shared workspaces and business support.

Being the quality residential leasing brand for young professionals, TOWNPLACE Community is also the heart of the property. Where premium amenities create bespoke experiences, and inventive design elevates the day-to-day. It creates a new way for stay, work, learn, play and socialize.

Serviced Apartment Features

TOWNPLACE WEST KOWLOON offer excellent views, allowing residents to enjoy stunning views of Victoria Harbour, the bustling cityscape, and iconic landmarks such as ICC and ifc. The units are designed by the award-winning architectural firms Conran & Partners and LAAB, thoughtfully maximizing the use of available space and delivering a stylish and enriched domesticity.

The units feature with an exclusive mobile application for managing home-automation systems and on-demand services. Also equipped with hotel class rain shower, branded hotel class mattresses with Pillow Tops, extra-large work surface and extendable desk, vertical storage spaces, enjoy the convenience of 50” - 65” HD smart TV that allows connection to residents’ own devices and a personalized entertainment setup. Residents have access to commercial-grade high-speed WIFI, exclusive access to the TP SOCIAL CLUB and reservation of facilities for various activities. The units also come with branded furniture, appliances, tableware, and utensils, as well as room services such as housekeeping and towel and linen changes. Laundry facilities and dry-cleaning service are available on all floors. For those with vehicles, on-site parking spaces are also provided.



TOWNPLACE WEST KOWLOON

The rental for the units are all-inclusive, including management fee, Government rents and rates, water and electricity bills - this comprehensive package allows residents to enjoy a hassle-free living experience with all their needs taken care of.

Information

Room/Unit Size(s) :	243-860 sq. ft. (Gross)	
Price range :	Starting from HK\$14,800 per month	
Min. length of stay :	1 day (Hotel) / 1 month (Apartment)	
Total number of rooms :	843	
Enquiries / reservation :	Tel : (852) 7073 3377	
Email :	info-wk@townplace.com.hk	
Address :	10 Lai Ying Street, West Kowloon	
Website URL :	westkowloon.townplace.com.hk	



TOWNPLACE WEST KOWLOON - One-Bedroom Unit



TOWNPLACE WEST KOWLOON - Two-Bedroom Unit

Hong Kong Gold Coast Residences



Hong Kong Gold Coast Residences is the perfect abode for resort living. Situated on the spectacular Castle Peak Bay, it is just steps away from verdant country parks, Tai Lam Chung Reservoir, MacLehose Trail and Golden Beach, offering residents precious getaways from the hustle and bustle of city life while closely commute to the Greater Bay Area metropolis.



Accommodation

Hong Kong Gold Coast Residences provides a choice of fully-furnished standard two to four-bedroom apartments with options of ensuite or duplexes; most apartments are even equipped with open-air balcony. The serviced apartments all boast spacious layout, accommodating different family size. Benefiting from its prime seaside location, most rooms command panoramic sea views or marina views, coupled with comprehensive services and amenities.

To provide guests with the ultimate homey comforts, each apartment is equipped with comprehensive facilities, including fully-equipped kitchen, private laundry facilities, and complimentary in-room Wi-fi. In addition, guests can avail of homecleaning services and upgrade to home automation or senior-friendly facilities.

Well-rounded facilities

An array of recreational facilities is available at its clubhouse, including gym, swimming pool, BBQ stoves, tennis courts, and more. The elegant property boasts abundant outdoor space with

a 50,000 sq.ft. lawn, offering extensive space for recreational activities. Residents can also experience farming fun at its Eco farm, and enjoy a host of perks and privileges at Gold Coast Hotel and Piazza.

Information

- Net Size:** 535 - 2,833 sq. ft. (SFA)
- Contract term:** 1 month up
- Monthly rate:** HK\$23,800 up
- Address:** 1 Castle Peak Road N.T., Hong Kong
- Tel:** (852) 8108 0200
- WhatsApp & WeChat:** (852) 9083 5268
- Email:** goldcoast@sino.com
- Website:** www.goldcoastresidences.com.hk



With its dedicated shuttle bus services, residents enjoy seamless connectivity to nearby areas including Tsuen Wan, Tsuen Wan West Station, Olympic Station and Nam Cheong Station. Shenzhen and Hong Kong Airport are just within 25-minute driving distance.

A comprehensive public transport network including buses, minibuses and shuttle buses offers easy access to different parts of the city and connect with the Greater Bay Areas as well. Gold Coast Piazza, with its restaurants, supermarket, clinic, and more, is less than 10 minutes' walk away.



Harbour Grand Kowloon



In its dedication to providing an exceptional living experience, Harbour Grand Kowloon is the ideal home away from home, bringing convenience and luxury to its guests in this dynamic hub of the world.

Location & accessibility

Boasting an unrivalled view of Victoria Harbour and the city's stunning skyline, Harbour Grand Kowloon is a deluxe five-star hotel, just a few steps from MTR Whampoa Station, adjacent to Hunghom Pier.

Services and facilities

Spacious and stylish, Harbour Grand Kowloon's 967 well-equipped rooms and suites feature magnificent harbour views and ample natural light, coupled with state-of-the-art facilities and modern comforts of a first-class property for both business and leisure travellers.

To provide guests with the ultimate homey comforts, the rooms are well-equipped and decorated, featuring in-room Wi-Fi with free local calls and parking service. What's more, guests can enjoy a 20% discount at selected F&B outlets as well as laundry services.

Apart from the comprehensive in-room services and facilities, the hotel also boasts a wide array of amenities that exceeds guests' expectations. They include a grand lobby with marble staircases and panoramic harbour views from grandiose 2-story windows; a modern and spacious residence lounge exclusively for guests staying at serviced suites; and four distinctive award-winning restaurants with diverse dining options to satisfy varying taste buds.

Guests can refresh in the rooftop glass-framed swimming pool surrounded by comfortable chaise lounges; or enjoy soothing spa and beauty services. Alternatively, the harbour-view Fitness Centre equipped with state-of-the-art fitness machines on the top floor is also a good place to stay active and healthy.



Information

Gross Size:	248 - 3,308 sq. ft.	
No. of rooms:	967	
Contract term:	1 month	
Monthly rate:	HK\$21,800 - \$204,300	
Address:	20 Tak Fung Street, Whampoa Garden, Hunghom, Kowloon, Hong Kong (MTR Whampoa Station, Exit D2)	
Tel:	(852) 2996 8491	
Fax:	(852) 2621 3328	
Email:	servicedsuites.hgkln@harbourgrand.com	
Website:	www.harbourgrand.com/kowloon	



Harbour Plaza Metropolis



Harbour Plaza Metropolis is conveniently located in the heart of Kowloon, overlooking the spectacular world-famous Victoria Harbour. Featuring 822 guestrooms and suites with eminent dining, comprehensive recreation facilities and convenient accessibility, the hotel offers unsurpassed comfort and functionality to both business and leisure travellers.

Location & accessibility

Located next to MTR Hung Hom Station, Harbour Plaza Metropolis provides convenient access to Hong Kong Island and Southern Mainland China by East Rail line, and New Territories by Tuen Ma Line. Guests can reach Hong Kong Convention and Exhibition Centre by MTR in 5 minutes. Shuttle bus service is available to commute between the business and shopping areas of bustling Tsim Sha Tsui in just 5 minutes. In addition, guests also enjoy direct access to Hong Kong Coliseum, restaurants and shops at the Fortune Metropolis Mall and nearby Tsim Sha Tsui East district.

Services and facilities

Designed for guests who expect discreet luxury and modern functionality, Harbour Plaza Metropolis has a variety of rooms and suites from 269 to 538 sq. ft. Each room offers either a charming view of the Victoria Harbour or the dynamic city.

Featuring an elegant interior design, all the rooms and suites are fully furnished, and come with home entertainment, complimentary in-room Wi-Fi internet access for 2 devices, an in-room electronic safe and free local telephone calls. Kitchenettes with cooking utensils for suites are also available for guests to enjoy home cooking. Guests can also avail of housekeeping and room services, with self-service coin laundry and a business service centre.

As for meals, guests can indulge themselves with a selection of Chinese, Japanese and Western cuisines in its distinguished restaurants and bars. Recreational facilities include an outdoor swimming pool with Jacuzzi, sauna, gymnasium and spa.



Information

Gross Size: 269 - 538 sq. ft.
No. of rooms: 822
Contract term: 30 days
Monthly rate: HK\$21,000 up – HK\$29,000 up
Address: 7 Metropolis Drive, Hunghom, Kowloon, Hong Kong
Tel: (852) 3160 6800
Fax: (852) 3160 6900
Email: servicedsuites.hpme@harbour-plaza.com
Website: www.harbour-plaza.com/metropolis



**The above rates, service and facilities are subject to change without prior notice.
 Please note that our rooms or suites vary in view, size and layout. The photos depict only one sample of each room or suite type and do not represent all rooms or suites. The photos have been edited and are for reference only.



Harbour Plaza 8 Degrees



A tranquil spot hidden from the city's hustle and bustle, Harbour Plaza 8 Degrees is an ideal accommodation for both leisure and business travellers to enjoy a relaxing long stay.

Location & accessibility

Situated in the quaint urban eastern shore of Hong Kong's Kowloon peninsula, Harbour Plaza 8 Degrees offers unrivalled convenience with just 6 to 8 minutes' walk from MTR Sung Wong Toi Station. In addition, residents can take advantage of the hotel's complimentary shuttle bus service to and from MTR Whampoa and Hung Hom Stations, as well as the vibrant Tsim Sha Tsui district.

Services and facilities

Designed for ultimate comfort, Harbour Plaza 8 Degrees offers an exquisite collection of 704 well-appointed guest rooms and suites, measuring from 280 to 655 sq. ft. All rooms are designed beautifully with tasteful decoration complemented

by impeccable amenities. What's more, an undisrupted view of the city and hotel's surroundings can be enjoyed from the Superior and Deluxe rooms. Featuring an extensive list of hotel services and facilities, the hotel requires a minimum of 30 nights' stay.

Dedicated to providing a serene and fun-filled place for guests to soothe their minds and body, Harbour Plaza 8 Degrees possesses an outdoor swimming pool, children pool, sauna and hotel gym. Guests can take a dip in the distinctively shaped outdoor swimming pool and whirlpool surrounded by sub-tropical gardens and a gentle waterfall, while the little ones can also have fun in the sun in the conjoined outdoor children's pool. Alternatively, gym lovers and people who can't swim can unwind in the fully-equipped gym with the latest state-of-the-art cardio-vascular exercise equipment, followed by a sauna.

Apart from the state-of-the-art facilities, adding to the relaxing lifestyle at Harbour Plaza 8 Degrees is the well-rounded amenities in every spacious suite. Home entertainment comprises a LCD TV with satellite, sports, movie, music and local high definition channels, plus free internet access and free local call. A fully-equipped kitchenette with microwave oven, refrigerator, electronic safe and electric kettle make home cooking enjoyable. Other noteworthy services include 32 lbs wash per 30 consecutive days; housekeeping service once a week; a 20% discount on extra laundry, pressing and dry cleaning services; and 24-hour concierge and security service. Guests can also enjoy a food and beverage discount and a special breakfast offer.



Information

Gross Size:	280 - 655 sq. ft.
No. of rooms:	704
Contract term:	30 nights
Monthly rate:	HK\$17,900 – HK\$43,500
Address:	199 Kowloon City Road, Tokwawan, Kowloon, Hong Kong (MTR Sung Wong Toi Station, Exit D)
Tel:	(852) 2126 1992
Fax:	(852) 2126 1909
Email:	servicesuites.hp8d@harbour-plaza.com
Website:	https://www.harbour-plaza.com/8degrees



Kowloon Harbourfront Hotel



Strategically located at Hung Hom Bay, Kowloon Harbourfront Hotel provides a cosy abode where guests can settle in and explore the city. With a lead-in category from 2-bedroom suite hotel in Hong Kong, Kowloon Harbourfront Hotel pledges to ensure your stay is in ultimate comfort. All our 240 suites featuring two bedrooms, a separate living room and a well-designed pantry, guests can also enjoy an array of recreational amenities.

Location & accessibility

Situate only minutes away from Hung Hom and Whampoa MTR Stations and the ferry pier. With a network of rail lines, roadways and sea routes nearby, all destinations in and around Hong Kong can be easily reached, exemplifying a true metropolitan living in Hong Kong.



Services and facilities

Each room is equipped with comprehensive facilities, including kitchenette with microwave oven, refrigerator and cooking utensils, free use of in-room coffee and tea making facilities, and complimentary in-room Wi-Fi internet access. In addition, guests can avail of an in-room electronic safe, free local telephone calls, housekeeping services, room service, and concierge service.

As a relaxing venue filled with amazing fun and entertainment, Kowloon Harbourfront Hotel presents a wide array of recreational facilities at its clubhouse.

Guests can refresh in a 70,000-sq. ft tropical garden and 60-metre outdoor swimming pool; or stay fit at the well-equipped fitness centre coupled with a table tennis area, changing rooms, sauna and steam facilities.

Family-friendly, the clubhouse also features an exclusive Kids Paradise area for the little ones. It comprises a ball pool, soft toy play area, soccer machine, study room, and children's library, offering a hassle-free yet safe area for children to develop their potentials and make new friends.



Information

Gross Size:	647 sq. ft.	
No. of rooms:	240	
Contract term:	30 days	
Monthly rate:	HK\$29,000 up – HK\$33,000 up	
Address:	8 Hung Luen Road, Hung Hom Bay, Kowloon, Hong Kong	
Tel:	(852) 3160 6800	
Fax:	(852) 3160 6900	
Email:	servicesuites.hpme@harbour-plaza.com	
Website:	www.harbour-plaza.com/kowloonharbourfront	

**The above rates, service and facilities are subject to change without prior notice.*

**Please note that our rooms or suites vary in view, size and layout. The photos depict only one sample of each room or suite type and do not represent all rooms or suites. The photos have been edited and are for reference only.*



The Kowloon Hotel



A modern hotel in bustling Tsim Sha Tsui, The Kowloon Hotel hits all the right marks when it comes to offering sophisticated accommodation for both business and leisure travellers.

Location & accessibility

Located in the heart of Tsim Sha Tsui, The Kowloon Hotel offers unrivalled convenience with dining and entertainment hotspots right on the doorstep, as well as excellent accessibility to all major districts of the city. The hotel is directly connected to the MTR Tsim Sha Tsui Station/Tsim Sha Tsui East Station (Exit L4) and Hong Kong's major shopping malls by an air-conditioned walkway from the hotel lobby.

Services and facilities

The Kowloon Hotel comprises 736 guest rooms including 8 suites, all of which provide all-rounded facilities for both business and leisure travellers. The hotel also features four restaurants and bar for customers' culinary delights. As a necessity of modern lifestyle, high-speed wireless broadband Internet access is available throughout the hotel.

Featuring a contemporary design, the guestrooms are categorized into Superior, Deluxe, Side Harbour View and Suites, ranging from 194 to 463 sq.ft. All rooms come with room service from 11 am to 11 pm, 24-hour hotel concierge service, 24-hour Business Service Centre, individual thermostat control, wireless broadband internet access, and room makeup service once a week.

To further accommodate residents' needs, the serviced apartment boasts impeccable service and facilities, including F&B and laundry discount, free local calls with two telephones and voicemail service, in-room EL-safe, under-bed storage space, microwave (subject to availability), and welcome amenities set.

Information



- Gross Size:** 18 - 43 sq. fm.
- No. of rooms:** 736
- Contract term:** 30 consecutive nights
- Monthly rate:** HK\$24,300 – HK\$59,640 per 30 consecutive nights
- Address:** 19 - 21 Nathan Road, Tsimshatsui, Kowloon, Hong Kong
- Tel:** (852) 2929 2888
- Fax:** (852) 2739 9811
- Email:** klnh_sales@harbour-plaza.com
- Website:** <https://www.harbour-plaza.com/kowloonhotel/en/>



Harbour Plaza Resort City



Stylish and comfortable, Harbour Plaza Resort City is a twin-tower complex with 1,102 guestrooms, representing a new concept in stylish living with hotel services and facilities of the highest standard.

Location & accessibility

Nestled in Tin Shui Wai, Harbour Plaza Resort City is surrounded by the 2-million sq. ft. Tin Shui Wai Central Park, and adjoins the 600,000-sq. ft. +WOO Shopping Mall, offering tranquillity and a neighbourhood vibe. It is easily accessible from Tin Shui Wai MTR Station - Exit E2 Ginza. Furthermore, its prime location also allows convenient commute to Shenzhen via the Shenzhen Western Corridor.

Services and facilities

Measuring from 408 to 1,200 sq.ft., its 1,012 guestrooms and suites are designed for a comfortable lifestyle, with most of them overlooking the Tin Shui Wai Central Park. All rooms are fully furnished with a custom interior design.

Home entertainment facilities include complimentary in-room Wi-Fi and satellite TV and cable channels. Incorporating the essence of home living, every room is equipped with an in-room refrigerator, electric kettle and safe; utilities such as water, electricity and phone lines are also included. In addition, its all-rounded services include housekeeping service (once a week), 24-hour security and concierge services, and coin laundry service.

The hotel also provides guests with a wide array of exclusive offers, like special rate for hotel outlets, a 10% discount on long-distance calls, laundry, dry cleaning, spa and treatment services, and a special rate for monthly parking at +WOO Shopping Mall (subject to availability).

Furthermore, The Club and Hotel spa are a healthy oasis with a large swimming pool and tennis courts. It features one of Hong Kong's longest indoor running tracks, fine Italian gymnasium machines, saunas and steam rooms. Guests can book the spa and tennis courts through The Club's reception desk. Located on the landscaped garden podium level with panoramic views of the nearby mountains, its wonderful free-form swimming pools are the perfect place to relax and unwind.



Information

Gross Size: 408 - 1,200 sq.ft
No. of rooms: 1,102
Contract term: 30 days
Monthly rate: HK\$13,388 - HK\$31,800
Address: 12 Tin Yan Road, Tin Shui Wai, N.T., Hong Kong
Tel: (852) 2123 8888
Email: servicedsuites.hprc@harbour-plaza.com
Website: www.harbour-plaza.com/hprc



Madera Residences



Inspired by the vitality of Barcelona and the leisurely Spanish lifestyle, Madera Residences has been painstakingly crafted by renowned Spanish firm Lagranja Design with lush décor and an air of serenity, just perfect for refined continental hospitality in the heart of Kowloon.

Dedicated to protecting the environment, Madera Residences was honored with the coveted Top 10 ‘Traveler’s Choice Award’ by TripAdvisor.com and has, for many years, been awarded ‘The Best Serviced Apartment Awards’ by REA Group.

What’s more, It is also the first serviced apartment in Hong Kong that adopts the ‘Raze Nano-Photocatalyst’ technology to medically disinfect all premises and facilities.

Luxuriate in the warmth and vitality of home amidst vibrant hues, elegant wooden décor, and lushly appointed open spaces; and experience the glamorous setting of Kowloon’s iconic cityscape right under your feet. Spotless, meticulously organized, and elegantly appointed with wooden elements, these 400 to 810 sq. ft. non-smoking suites and studios exude a sense of harmony and warmth.

The rooms feature design touches that give the space extra flexibility, such as a hidden partition to separate the living room and the bedroom, and a single bed you can pull out from the TV wall for a guest to stay the night in the Penthouse Suite.





Stay at the award-winning green serviced apartment and enjoy a comprehensive array of welcome amenities, including free in-room Wi-Fi internet access; cooking facilities; round-the-clock concierge and security services; self-served laundry room facility; limousine airport transfer upon request; membership Program ‘Madera Loyalty Programme’; Now TV with 51 channels, including movies and mega sport channels; housekeeping service; and more. Pantry facilities are also available for long-stay guests.

Connected to Hotel Madera Hong Kong, all guests can also enjoy the hotel’s facilities, including the gymnasium, yoga centre, and rooftop lounge. An incredible range of services, provided from multilingual staff, are available too, including 24 hour concierge; baby crib & wheelchairs; laundry & dry cleaning; wakeup call; and limousine service.

The rates of the flexible contract include management fee, water bills & electricity bills, government rent & rate, and A/C fee.



Information

Gross Size:	400 – 810 sq.ft.	
No. of rooms:	90	
Contract term:	1 month minimum	
Monthly rate:	From HK\$23,000 – \$50,000	
Address:	19 Cheong Lok Street, Jordan, Kowloon	
Enquiries:	(852) 3190 9888	
Fax:	(852) 3190 9889	
WeChat/ WhatsApp/ Line:	(852) 5620 8574	
Email:	mrinfo@maderagroup.com	
Website:	https://www.maderagroup.com/hotel_residence/	



Address

19 Cheong Lok Street,
Jordan, Kowloon

Tel

(852) 3190 9888

Email

mrinfo@maderagroup.com

Website

https://www.maderagroup.com/hotel_residence/



Xi Hotel



The Chinese character 'xi' reflects joy and passion, sentiments embodied by Xi Hotel. With stylish cosy rooms and helpful staff that strive for excellence, guests can expect nothing less than perfect satisfaction with this luxury boutique hotel.

We're thought of everything

Exuding Asian artistic flair, the 64-room hotel features a contemporary and elegant décor with size ranging from 220 to 320 sq. ft.

All rooms come with comprehensive amenities, including free broadband internet connection, in-room safe, LED TV with satellite and cable channels, air-conditioning and air purifier that nurture a comfortable environment, and coffee and tea making facilities with mini-bar.

It is a haven away from the fast-paced hustle and bustle lifestyle, meeting guests' every need and desire.

The Drawing Room on the 1st floor is a new multi-purpose venue that provides not only respite for travellers, but is also an exceptional space to hold

leisure or business functions alike, such as cocktail parties, or meetings and conferences. Featuring sophisticated furnishings, the spacious room is incredibly practical, accommodating a long conference table that fits 12 people, a stylish sofa with a large TV & computer screen, and a library all in one room.

Where the action to

Located in Tsim Sha Tsui, the heart of culture in Hong Kong and a renowned entertainment destination, Xi Hotel is just a 5-minute walk to the MTR or the iconic Victoria Harbour, hailed for its world-famous panoramic night views.

It is also within walking distance to many other iconic tourist attractions, such as the Hong Kong Space Museum, Hong Kong Cultural Centre, and Harbour city - Hong Kong's largest shopping arcade.

If guests would like to travel beyond Hong Kong, the airport is within 30 minutes' reach via Airport Express at the nearby Kowloon Station.

Information

Gross Size: 280 – 430 sq. ft.

No. of rooms: 64

Contract term: 1 day

Monthly rate: From \$22,800

Address: 7-9 Minden Avenue, Tsim Sha Tsui, Kowloon, Hong Kong

Enquiries: (852) 2739 7777

Email: rsvn@xihotel.com.hk

Website: www.xihotel.com.hk



Yi Serviced Apartments



managed by XIN



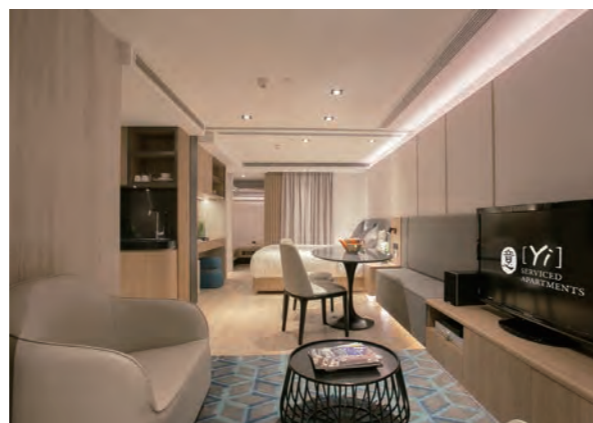
Seamlessly blending sophistication and coziness, Yi Serviced Apartments offers a genuine "home away from home" tailored for busy executives and business travelers. Characterized by a full spectrum of superb amenities and well-rounded services, Yi guarantees a comfortable, convenient, and personalized living environment.

Accessibility

Conveniently located at the heart of the bustling Kowloon Peninsula, Yi connects residents to both work and leisure. Just minutes away from the Tsim Sha Tsui MTR station, residents can reach all major office buildings, shopping centers, and entertainment hotspots with ease. Also, with iconic malls, such as Harbour City, and major tourist attractions, including museums and harborfront promenades, being just a stone's throw away, residents are spoilt for choice with destinations for gourmet dining, high-end shopping, and sightseeing.

Service and facilities

Designed exclusively for executives with tight schedules, all Yi apartments are fully furnished for ultimate convenience combined with a personalized touch. Luxurious Bellora bedding and Simmons mattress ensure quality, undisturbed sleep vital for busy individuals. An iDTV complete with international channels, combined with free WiFi keep guests entertained and connected at all times. Yi provides daily maid services on top of twice-a-week linen and towel change. Residents also enjoy special access to a comprehensive in-house gym and a lounge with a coffee corner and a business center.



Information



Gross Size: 368 – 755 sq. ft.
No. of rooms: 33
Layout: 1 bedroom / studio
Contract term: 1 day
Monthly rate: HK\$18,000.00 - \$30,800.00 per month
Address: 10-12 Chatham Court, Tsim Sha Tsui, Kowloon, Hong Kong
Enquiries: (852) 8200 1100 / 2735 1882
Fax: (852) 2735 0055
Email: leasing@xin.com.hk
Website: www.xin.com.hk/yi-serviced-apartments

URBAN HOUSE

Aside from accommodation, networking community space can also be found in Yi Serviced Apartments. Located on the 1st to 4th floor, URBAN HOUSE exudes a warm Japanese-style ambience, and provides a members' club with spacious co-working space and an event venue for the entrepreneur community to build a useful network.

Services and facilities

URBAN HOUSE is perfectly geared up for hosting events like training courses, seminars, weekend markets, exhibitions, and more. Accommodating more than 100 participants, the venue is well-equipped with a projector, HDTV, sound system, high-speed wireless broadband, and catering services.

Catering Services

URBAN HOUSE boasts three luxurious Japanese restaurants, namely Omakase Iki, Teppanichi, and Sakaki respectively. On top of fine dining, they also provide an ideal private environment for business functions and celebrations.



Information

Gross Size: 2000 sq. ft.
No. of event hall: 4
Hourly rate: \$300 up (per minimum 2 hours)
Address: 2/F-3/F, Yi Serviced Apartments, 10-12 Chatham Court, Tsim Sha Tsui, Kowloon, Hong Kong
Enquiries: (852) 2722 0116/ 5726 8231
Email: cs@urbanhousehk.com
Website: www.urbanhousehk.com

Sai Kung Serviced Apartment



Perched on the stunning Sha Ha Beach, Sai Kung Serviced Apartment is a collection of European-inspired four-storey low-density serviced apartments boasting eight units with a 270-degree panoramic sea view. Its spacious, serene and peaceful living environment in an unparalleled natural setting is ideal for those who seek undisturbed comfort and luxury paired with excellent service.

Location and Accessibility

Situated in Sha Ha Beach, Sai Kung Serviced Apartment not only commands an expansive vista of the sea, but also abundant space for outdoor activities as well as a choice of seaside restaurants. Mere steps away from sandy beaches, the residence provides guests with the chance to explore a wide range of watersports activities spanning canoeing, kayaking, wind surfing, and more. Diverse restaurants and pub bars can also be found at the seaside. Guests can also explore Sai Kung downtown, within 15 minutes walking distance along the beach, for an array of gourmet restaurants, sightseeing spots and shops.

Services and facilities

The low-density residence offers 8 spacious units ranging in two sizes, 1,827 sq. ft and 2,210 sq. ft. Two of the top-floor units even come with a private rooftop. Fully-furnished for comfort and style, all units boast two bedrooms and two bath arrangements, along with European rustic-chic decorative furniture.

Aside from the well-thought-out design, every unit comes with all-rounded services, including a HD Cable TV, individual air-conditioning, 24-hour security service, washing & drying machines and a pantry. To maintain a pristine state for the apartments, weekday cleaning services are provided. As a necessity of modern living, complimentary Wi-Fi connection is also offered. What's more, guests can enjoy home cooking in its fully-equipped modern kitchenette with a range of crockery, glassware, tableware and utensils.

To accommodate guests' needs to commute, one car parking space is included for each apartment. Guests can also enjoy a small getaway from the hustle and bustle of modern city life in its airy, spacious and secluded garden on the ground floor alongside the beach. Equipped with outdoor seating, it is perfect for family and friends to get together. Pet owners can bring along their pets as well and avail of the abundant serene open space in this pet-friendly serviced apartment.



Information

- Room Size:** 1,827 – 2,210 sq. ft.
- No. of rooms:** 8
- Contract term:** 1 month
- Monthly rate:** HK\$60,000 - HK\$82,500
- Address:** No 3 Sha Ha Path, Sha Ha, Tai Mong Tsai Road, Sai Kung, New Territories, Hong Kong
- Enquiries:** (852) 2407 6161
- Email:** residentialleasing@earlylight.com.hk
- Website:** www.saikungservicedapartment.com





Serviced Suites

Directory

Apartment O Causeway Bay (Pet Friendly)

Gross Size: 220-1,500 sq. ft.
Price Range: HK\$17,000 up
Min. Length of Stay: 1 month
Total No. of Rooms: 22
Tel: (852) 9858 0812
Website: www.apartmento.hk
Email: info@apartmento.hk
Address: 5 Hoi Ping Road, Causeway Bay



APARTMENT O

Apartment O Happy Valley (Pet Friendly)

Gross Size: 670 sq. ft.
Price Range: HK\$38,000 up
Min. Length of Stay: 1 month
Total No. of Rooms: 22
Tel: (852) 9165 6769
Website: www.apartmento.hk
Email: info@apartmento.hk
Address: 25 Wong Nai Chung Road, Happy Valley



APARTMENT O

The Camphora

Room Size: 491 - 518 s.f. (M.F.A.) / 319 - 337 s.f. (S.F.A.)
Balcony: 69 - 207 s.f. (S.F.A.)
Price Range: From HK\$30,500
Min. Length of Stay: 1 month
Total No. of Rooms: 24
Tel: (852) 8107 0038
Fax: (852) 2367 0923
Website: www.thecamphora.com.hk
Email: thecamphora@sino.com
Address: 51-52 Haiphong Road, Tsim Sha Tsui



the CAMPHORA
 TRIM SHA TSUI

CM+ Hotels and Serviced Apartments

Room Size: 630 - 1,412 sq. ft.
Price Range: HK\$32,000 - \$78,800
Min. Length of Stay: 1 day
Total No. of Rooms: 135
Tel: (852) 3560 6738 / 3709 6600
Fax: (852) 3709 6622
Website: www.cmplus.com.hk
Email: cmplus@cmpd.com.hk
Address: 16 Connaught Road West, Hong Kong



CM+ HOTELS AND SERVICED APARTMENTS

D'HOME 239 Queen's Road East

Room Size: 401 - 582 sq. ft. (GFA) 270 - 380 sq. ft. (SA)
Price Range: HK\$17,000 up
Min. Length of Stay: 1 month
Tel: (852) 3108 3636
Website: www.dhome.com.hk
Email: info@dhome.com.hk
Address: 239 Queen's Road East, Wanchai



D'HOME

Eight Kwai Fong Happy Valley

Gross Size: 258 - 428 sq.ft
Price Range: HK\$15300up per month
Min. Length of Stay: 1 year minimum
Total No. of Rooms: 139
Tel: (852) 2818 1388
Whatapp: (852) 6346 0288
Website: www.8kwaihong.com.hk
Address: 8 Kwai Fong Street, Happy Valley



EIGHT KWAI FONG
 Happy Valley

Four Seasons Place Hong Kong

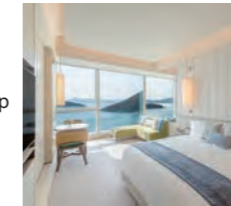
Gross Size: 547 - 3,562 sq. ft.
Price Range: HK\$54,600 up
Min. Length of Stay: 1 month
Total No. of Rooms: 519
Tel: (852) 3196 8228
WhatsApp/WeChat: (852) 9728 1886
Website: www.fsphk.com
Email: enquiries@fsphk.com
Address: Atop Hong Kong Station, 8 Finance Street, Central, Hong Kong



FOUR SEASONS PLACE
 HONG KONG

The Fullerton Ocean Park Hotel Hong Kong

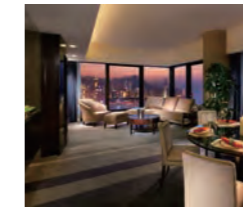
Gross Size: 377 sq.ft. up
Price Range: 7 nights : HK\$1,780 and up
 14 nights : HK\$1,680 and up
 30 nights : HK\$30,000 and up
Min. Length of Stay: 7 nights or up
Total No. of Rooms: 425
Tel: (852) 2166 7326
Whatapp: (852) 6263 1146
Website: fullertonhotels.com
Email: fop.sales@fullertonhotels.com
Address: 3 Ocean Drive, Aberdeen, Hong Kong



THE FULLERTON
 OCEAN PARK HOTEL · HONG KONG

Harbour Grand Hong Kong

Gross Size: 333 - 1,075 sq. ft.
Price Range: HK\$22,400 - HK\$75,000 per month
Min. Length of Stay: 1 month
Total No. of Rooms: 828
Tel: (852) 2121 2667
Fax: (852) 2121 2696
Website: www.harbourgrand.com/hongkong
Email: servicedsuites.hghk@harbourgrand.com
Address: 23 Oil Street, North Point, Hong Kong



HARBOUR GRAND
 HONG KONG

Harbour Grand Kowloon

Gross Size: 248 - 3,308 sq. ft.
Price Range: HK\$21,800 - \$204,300
Min. Length of Stay: 1 month
Total No. of Rooms: 967
Tel: (852) 2996 8491
Fax: (852) 2621 3328
Website: www.harbourgrand.com/kowloon
Email: servicedsuites.hgkln@harbourgrand.com
Address: 20 Tak Fung Street, Whampoa Garden, Hunghom, Kowloon, Hong Kong (MTR Whampoa Station, Exit D2)



HARBOUR GRAND
 KOWLOON

Harbour Plaza 8 Degrees

Gross Size: 535 - 2,833 sq. ft.
Price Range: HK\$17,900 - HK\$43,500
Min. Length of Stay: 30 nights
Total No. of Rooms: 704
Tel: (852) 2126 1992
Fax: (852) 2126 1909
Website: https://www.harbour-plaza.com/8degrees
Email: servicedsuites.hp8d@harbour-plaza.com
Address: 199 Kowloon City Road, Tokwawan, Kowloon, Hong Kong (MTR Sung Wong Toi Station, Exit D)



HARBOUR PLAZA
 8 DEGREES
 KOWLOON · HONG KONG

Harbour Plaza Metropolis

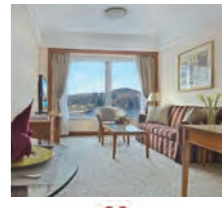
Gross Size: 269 - 538 sq. ft.
Price Range: HK\$21,000 up - HK\$29,000 up
Min. Length of Stay: 30 days
Total No. of Rooms: 822
Tel: (852) 3160 6800
Fax: (852) 3160 6900
Website: www.harbour-plaza.com/metropolis
Email: servicedsuites.hpme@harbour-plaza.com
Address: 7 Metropolis Drive, Hunghom, Kowloon, Hong Kong



HARBOUR PLAZA
 METROPOLIS
 KOWLOON · HONG KONG

Harbour Plaza North Point

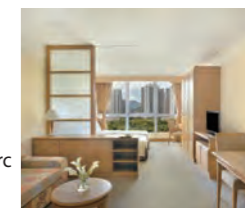
Gross Size: 240 - 1,200 sq. ft.
Price Range: From HK\$18,500 nett (Subject to change without prior notice)
Min. Length of Stay: 30 consecutive nights
Total No. of Rooms: 719
Tel: (852) 2185 2822
WhatsApp: (852) 6340 3296
Website: http://www.harbour-plaza.com/hpn
Email: servicedsuites@harbour-plaza.com
Address: 665 King's Road, North Point, Hong Kong



HARBOUR PLAZA
 NORTH POINT · HONG KONG

Harbour Plaza Resort City

Gross Size: 408 - 1,200 sq. ft.
Price Range: HK\$13,388 - HK\$31,800
Min. Length of Stay: 30 days
Total No. of Rooms: 1,102
Tel: (852) 2123 8888
Website: www.harbour-plaza.com/hprc
Email: servicedsuites.hprc@harbour-plaza.com
Address: 12 Tin Yan Road, Tin Shui Wai, N.T., Hong Kong



HARBOUR PLAZA
 Resort City
 TIN SHUI WAI · HONG KONG

The HarbourView Place @ ICC megalopolis

Gross Size: 464 - 3,270 sq. ft.
Price Range: HK\$39,000 up
Min. Length of Stay: 1 month (short staying package also available)
Total No. of Rooms: 266
Tel: (852) 3718 8000
WhatsApp/WeChat: (852) 9661 7100
Website: www.harbourviewplace.com
Email: enquiries@harbourviewplace.com
Address: Atop Kowloon Station, 1 Austin Road West, Kowloon, Hong Kong



Hotel Madera Hollywood

Room Size: 580 - 750 sq.ft.
Price Range: HK\$45,000 - \$60,000
Min. Length of Stay: 1 month
Total No. of Rooms: 38
Tel: (852) 3913 2888
Fax: (852) 3913 2800
WeChat/WhatsApp/Line: (852) 6590 5453
Website: www.maderagroup.com/hollywood
Email: mhwinfo@maderagroup.com
Address: 53-55 Hollywood Road, Central, Hong Kong



Kornhill Apartments

Room Size: 400 - 1,250 sq.ft.
Price Range: HK \$19,000 - \$71,300
Min. Length of Stay: 1 month
Total No. of Rooms: 450
Tel: (852) 2137 8101
Website: www.kornhillapartments.com
Email: kornhillapts@hanglung.com
Address: 2 Kornhill Road, Quarry Bay



Loplus@Hennessy

Room Size: 239 - 1,373 sq.ft.
Price Range: HK\$25,600 - HK\$100,400
Min. Length of Stay: 1 month
Total No. of Rooms: 210
Tel: (852) 2625 2323 / 8202 3377
WhatsApp: (852) 9320 2429
Website: www.loplus.com.hk
Email: enquiry@loplus.com.hk
Address: 388 Hennessy Road, Wan Chai, Hong Kong



Hong Kong Gold Coast Residences

Room Size: 535 - 2,833 sq. ft. (SFA)
Price Range: HK\$23,800 up
Min. Length of Stay: 1 month up
Tel: (852) 8108 0200
WhatsApp & WeChat: (852) 9083 5268
Website: www.goldcoastresidences.com.hk
Email: goldcoast@sino.com
Address: 1 Castle Peak Road N.T., Hong Kong



The Humphreys

Room Size: 358 - 575 s.f. (M.F.A.) / 233 - 374 s.f. (S.F.A.)
Balcony: 61 - 122 s.f. (S.F.A.)
Price Range: From HK\$27,000
Min. Length of Stay: 1 month
Total No. of Rooms: 20
Tel: (852) 8107 0038
Fax: (852) 2307 6012
Website: www.thehumphreys.com.hk
Email: thehumphreys@sino.com
Address: 6-6A Humphreys Avenue, Tsim Sha Tsui, Kowloon



The Kowloon Hotel

Gross Size: 18 - 43 sq.m
Price Range: HK\$24,300 - HK\$59,640 per 30 consecutive nights
Min. Length of Stay: 30 consecutive nights
Total No. of Rooms: 736
Tel: (852) 2929 2888
Fax: (852) 2739 9811
Website: https://www.harbour-plaza.com/kowloonhotel/en/
Email: klnh_sales@harbour-plaza.com
Address: 19 - 21 Nathan Road, Tsimshatsui, Kowloon, Hong Kong



Loplus@Johnston

Room Size: 320 - 630 sq.ft.
Price Range: HK\$24,800 - HK\$34,500
Min. Length of Stay: 1 month
Total No. of Rooms: 69
Tel: (852) 2625 2323 / 8202 3377
WhatsApp: (852) 9320 2429
Website: www.loplus.com.hk
Email: enquiry@loplus.com.hk
Address: 5 Luard Road, Wan Chai, Hong Kong



Hong Kong Parkview

Gross Size: 254 - 2,010 sq. ft.
Monthly rate: HK\$ 21,000 - \$95,000
Min. Length of Stay: 1 month
No. of Room (s): 222
Tel: (852) 2812 3456 / 5200 8060
Website: www.hongkongparkview.com
Email: pvsales@hongkongparkview.com
Address: 88 Tai Tam Reservoir Road, Hong Kong



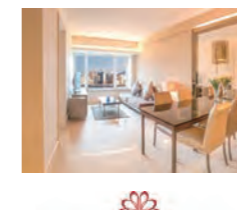
The Johnston

Room Size: 566 & 577 s.f. (M.F.A.) / 354 & 365 s.f. (S.F.A.)
Terrace Size: 234, 263 & 444 s.f. (M.F.A.)
Price Range: From HK\$32,850
Min. Length of Stay: 1 month
Total No. of Rooms: 87
Tel: (852) 8107 0038
Fax: (852) 3966 0066
Website: www.thejohnstonsuites.com/en
Email: thejohnston@sino.com
Address: 74-80 Johnston Road, Wan Chai, Hong Kong



Kowloon Harbourfront Hotel

Room Size: 647 sq. ft.
Price Range: HK\$29,000 up - HK\$33,000 up
Min. Length of Stay: 30 days
Total No. of Rooms: 240
Tel: (852) 3160 6800
Fax: (852) 3160 6900
Website: www.harbour-plaza.com/kowloonharbourfront
Email: servicedsuites.hpme@harbour-plaza.com
Address: 8 Hung Luen Road, Hunghom Bay, Kowloon, Hong Kong



Madera Residences

Room Size: 400 - 810 sq.ft.
Price Range: HK\$23,000 - \$50,000
Min. Length of Stay: 1 month
Total No. of Rooms: 90
Tel: (852) 3190 9888
Fax: (852) 3190 9889
WeChat/WhatsApp/Line: (852) 5620 8574
Website: https://www.maderagroup.com/hotel_residence/
Email: mrinfo@maderagroup.com
Address: 19 Cheong Lok Street, Jordan, Kowloon



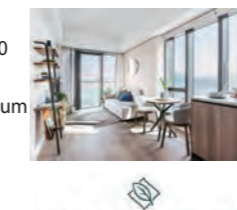
Hotel Alexandra

Gross Size: 226 - 463 sq. ft.
Price Range: From HK\$18,888
Min. Length of Stay: 30 consecutive nights
Total No. of Rooms: 840
Tel: (852) 3893 2888 / 3893 2808
Fax: (852) 3893 2800
Website: hotelalexandrahk.com
Email: monthlystay@hotelalexandrahk.com
Address: 32 City Garden Road, North Point, Hong Kong (MTR Fortress Hill Station, Exit B)



Lanson Place Waterfront Suites, Kong Kong

Room Size: 345 - 1,363 sq.ft.
Price Range: HK\$26,000 - HK\$120,000 per month
Min. Length of Stay: 1 month minimum
Total No. of Rooms: 74
Tel: (852) 2178 2288
Fax: (852) 2178 2882
Website: lansonplace.com/waterfrontsuites
Email: enquiry.wfhk@lansonplace.com
Address: 1 Oi Tak Street, Shau Kei Wan, Hong Kong



Pacific Place Apartments

Room Size: 1,220 - 2,650 sq.ft
Price Range: HK\$88,000 to \$280,000 per calendar month
Min. Length of Stay: 1 month
Total No. of Rooms: 268
Tel: (852) 3515 6565
Fax: (852) 2877 2661
Website: www.pacificplaceapartments.com.hk
Email: ppaleasing@swirehotels.com
Address: Pacific Place, 88 Queensway, Admiralty, Hong Kong



太古廣場栢舍
PACIFIC PLACE APARTMENTS

Shama Central

Room Size: 500 - 2,000 sq.ft.
Price Range: HK\$35,800 - \$100,000
Min. Length of Stay: 1 night
Total No. of Rooms: 56
Tel: (852) 3100 8555
Fax: (852) 3100 8500
Website: www.shama.com/central
Email: reservations.hongkong@shama.com
Address: 26 Peel Street, Central, Hong Kong



shama
Central

Shama Island North

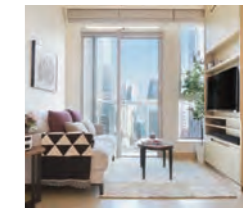
Room Size: 360 - 950 sq.ft.
Price Range: HK\$25,500 - \$58,000
Min. Length of Stay: 1 month
Total No. of Rooms: 92
Tel: (852) 3100 8555
Fax: (852) 3100 8500
Website: www.shama.com/island-north-hong-kong
Email: reservations.hongkong@shama.com
Address: 310 King's Road, North Point, Hong Kong



shama
Island North

The Staunton

Room Size: 471 & 614 s.f. (M.F.A.) / 306 & 399 s.f. (S.F.A.)
Balcony: 22 s.f. (S.F.A.)
Flat Roof: 367 s.f. (S.F.A.)
Price Range: From HK\$32,500
Min. Length of Stay: 1 month
Total No. of Rooms: 57
Tel: (852) 8107 0038
Fax: (852) 2642 2678
Website: www.thestauntonsuites.com.hk
Email: thestaunton@sino.com
Address: 22 Staunton Street, Central, Hong Kong



the
STAUNTON
CENTRAL

Regent Heights Serviced Apartment

Room Size: 218 - 688 sq.ft.
Price Range: HK\$16,000 - HK\$38,500
Min. Length of Stay: 1 month
Total No. of Rooms: 176
Tel: (852) 2895 2555
Website: www.regentheights.com.hk
Email: regentheights@earlylight.com.hk
Address: 11-17A Tung Lo Wan Road, Causeway Bay, Hong Kong



REGENT HEIGHTS

Shama Fortress Hill

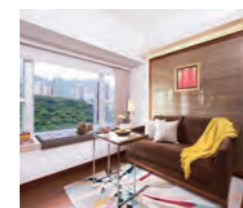
Room Size: 382 - 960 sq.ft.
Price Range: HK\$26,000 - \$66,800
Min. Length of Stay: 1 month
Total No. of Rooms: 115
Tel: (852) 3100 8555
Fax: (852) 3100 8500
Website: www.shama.com/fortreshill
Email: reservations.hongkong@shama.com
Address: 151 King's Road, North Point, Hong Kong



shama
Fortress Hill

Shama Midlevels

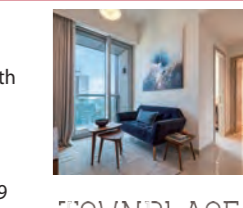
Room Size: 645 sq.ft.
Price Range: HK\$36,800 - \$55,000
Min. Length of Stay: 1 month
Total No. of Rooms: 24
Tel: (852) 3100 8555
Fax: (852) 3100 8500
Website: www.shama.com/midlevels-kennedy
Email: reservations.hongkong@shama.com
Address: 9K Kennedy Road, Midlevels, Hong Kong



shama
Midlevels

TOWNPLACE KENNEDY TOWN

Gross Size: 463-1,025 sq. ft. (Gross) 344-834 sq. ft. (Saleable)
Price Range: HK\$26,000 up per month
Min. Length of Stay: 1 month
Total No. of Rooms: 128
Tel: (852) 9383 9979
WhatsApp/WeChat: (852) 9383 9979
Website: www.townplace.com.hk
Email: info@townplace.com.hk
Address: 97 Belcher's Street, Kennedy Town



TOWNPLACE
KENNEDY TOWN

The Repulse Bay

Room Size: 1,735 - 3409 sq.ft.
Price Range: HK\$95,000 - 230,000
Min. Length of Stay: 30 days
Total No. of Rooms: 49 apartments (17 serviced apartments)
Tel: (852) 2292 2808
Website: www.therepulsebay.com
Email: leasingtrb@peninsula.com
Address: 109 Repulse Bay Road, Hong Kong



The Repulse Bay
HONG KONG

Shama Hollywood

Room Size: 580 sq.ft. with private balcony
Price Range: HK\$37,800 - \$48,600
Min. Length of Stay: 1 month
Total No. of Rooms: 11
Tel: (852) 3100 8555
Fax: (852) 3100 8500
Website: www.shama.com/hollywood
Email: reservations.hongkong@shama.com
Address: 52 Hollywood Road, Central, Hong Kong



shama
Hollywood

Shama Tsim Sha Tsui

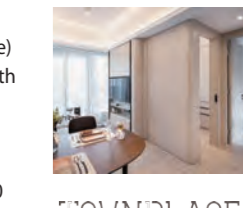
Room Size: 320 - 1,074 sq.ft.
Price Range: HK\$25,600 - \$64,500
Min. Length of Stay: 1 month
Total No. of Rooms: 87
Tel: (852) 3100 8555
Fax: (852) 3100 8500
Website: www.shama.com/tsimshatsui
Email: reservations.hongkong@shama.com
Address: 74-78 Nathan Road, Tsim Sha Tsui, Kowloon, Hong Kong



shama
Tsim Sha Tsui

TOWNPLACE SOHO

Gross Size: 354-1,299 sq. ft. (Gross) 286-1,092 sq. ft. (Saleable)
Price Range: HK\$26,000 up per month
Min. Length of Stay: 1 month
Total No. of Rooms: 293
Tel: (852) 7073 3300
WhatsApp/WeChat: (852) 7073 3300
Website: www.townplace.com.hk
Email: info@townplace.com.hk
Address: 18 Caine Road, Central (near Central-Mid-Levels Escalator)



TOWNPLACE
SOHO

Sai Kung Serviced Apartment

Room Size: 1,827 - 2,210 sq. ft.
Price Range: HK\$60,000 - HK\$82,500
Min. Length of Stay: 1 month
Total No. of Rooms: 8
Tel: (852) 2407 6161
Website: www.saikungservicedapartment.com
Email: residentialleasing@earlylight.com.hk
Address: No 3 Sha Ha Path, Sha Ha, Tai Mong Tsai Road, Sai Kung, New Territories, Hong Kong



Soho 69

Room Size: 380 - 650 sq.ft.
Price Range: HK\$17,000 - HK\$32,000
Min. Length of Stay: 1 month
Total No. of Rooms: 55
Tel: (852) 2352 8833
Website: www.thesoho.com.hk
Email: Soho69@beautiful.com.hk
Address: 69 Hollywood Road, Central, Hong Kong



SOHO

TOWNPLACE WEST KOWLOON

Gross Size: 243-860 sq. ft.
Price Range: HK\$14,800 up per month
Min. Length of Stay: 1 day (Hotel)
 1 month (Apartment)
Total No. of Rooms: 843
Tel: (852) 7073 3377
WhatsApp/WeChat: (852) 7073 3377
Website: westkowloon.townplace.com.hk
Email: info-wk@townplace.com.hk
Address: 10 Lai Ying Street, West Kowloon



Two MacDonnell Road

Room Size: 336 - 750 sq.ft.
Price Range: HK\$26,888 and up per month (Daily rate at HK\$1,200 up)
Min. Length of Stay: 1 day
Total No. of Rooms: 213
Tel: (852) 2132 2132
Fax: (852) 2132 1000
Website: www.twomr.com.hk
Email: resv@mr2.com.hk
Address: 2 MacDonnell Road, Mid-levels, Hong Kong



The Unit Davis

Room Size: 170 - 497 sq. ft.
Price Range: From HK\$11,000
Min. Length of Stay: 6 months
Total No. of Rooms: 57
Tel: (852) 2267 8901
Fax: (852) 2366 7939
Website: www.TheUnit.com.hk
Email: info@TheUnit.com.hk
Address: 22 Davis Street, Kennedy Town, Hong Kong



The Unit Happy Valley

Room Size: 209 - 414 sq. ft.
Price Range: From HK\$10,000
Min. Length of Stay: 1 month
Total No. of Rooms: 68
Tel: (852) 2267 8901
Fax: (852) 2366 7939
Website: www.TheUnit.com.hk
Email: info@TheUnit.com.hk
Address: 17 Yik Yam Street, Happy Valley, Hong Kong



The Unit Morrison Hill

Room Size: from 680 sq. ft.
Price Range: From HK\$14,000
Min. Length of Stay: 1 month
Total No. of Rooms: 18
Tel: (852) 2267 8901
Fax: (852) 2366 7939
Website: www.TheUnit.com.hk
Email: info@TheUnit.com.hk
Address: 46-48 Morrison Hill Road, Causeway Bay, Hong Kong



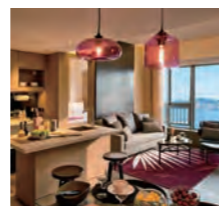
Victoria Harbour Residence

Saleable Size: 361 - 1,063 sq.ft.
Price Range: HK\$38,500 up
Min. Length of Stay: 1 month
Total No. of Rooms: 140
Tel: (852) 2284 2988
WhatsApp/WeChat: (852) 9661 8200
Website: www.victoriaharbourresidence.com
Email: enquiries@victoriaharbourresidence.com
Address: Near MTR North Point Station, 133 Java Road, North Point, Hong Kong



Vega Suites

Gross Size: 367 - 1,560 sq.ft.
Price Range: HK\$17,500 up
Min. Length of Stay: 1 month minimum (Night stays also available)
Total No. of Rooms: 476
Tel: (852) 3963 7888
WhatsApp/WeChat: (852) 9731 7188
Website: www.vegasuites.com.hk
Email: enquiries@vegasuites.com.hk
Address: Atop MTR Tseung Kwan O Station, 3 Tong Tak Street, Tseung Kwan O, Hong Kong



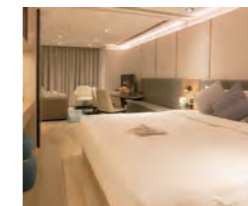
Xi Hotel

Room Size: 280 - 430 sq. ft.
Price Range: From HK\$22,800
Min. Length of Stay: 1 day
Total No. of Rooms: 64
Tel: (852) 2739 7777
Website: www.xihotel.com.hk
Email: rsvn@xihotel.com.hk
Address: 7-9 Minden Avenue, Tsim Sha Tsui, Kowloon, Hong Kong



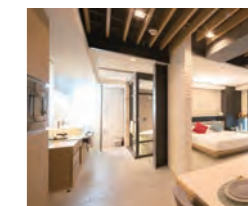
Yi Serviced Apartments

Room Size: 368 - 755 sq. ft.
Price Range: HK\$18,000 - \$30,800 per month
Min. Length of Stay: 1 day
Total No. of Rooms: 33
Tel: (852) 8200 1100 / 2735 1882
Fax: (852) 2735 0055
Website: www.xin.com.hk/yi-serviced-apartments
Email: leasing@xin.com.hk
Address: 10-12 Chatham Court, Tsim Sha Tsui, Kowloon, Hong Kong



Yin Serviced Apartments

Room Size: 740 - 862 sq. ft.
Price Range: HK\$32,000 - \$50,000 per month
Min. Length of Stay: 1 day
Total No. of Rooms: 42
Tel: (852) 8200 1100 / 2851 6966
Fax: (852) 2851 6766
Website: www.xin.com.hk/yin-serviced-apartments
Email: leasing@xin.com.hk
Address: 97A Wellington Street, Central, Hong Kong



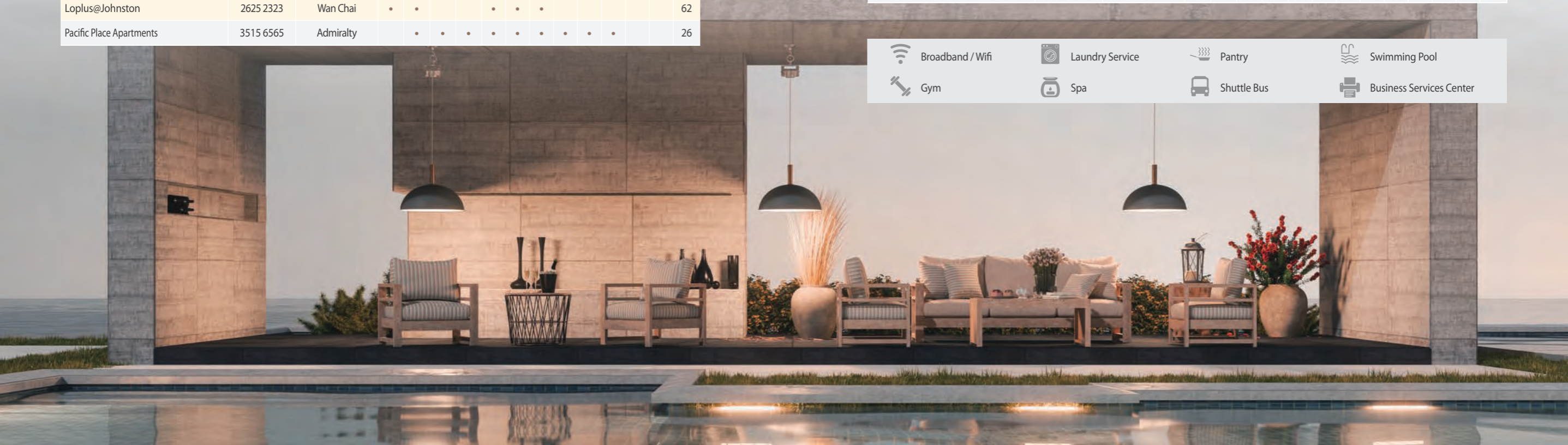
HONG KONG

Serviced Suite	Tel.	District	Layout				Facilities								Page No.	
			Studio	1 bedroom	2 bedrooms	3 bedrooms	WiFi	Washing	Pantry	Swimming Pool	Gym	Spa	Shuttle Bus	Business Services Center		
Apartment O	9858 0812 9165 6769	Causeway Bay Happy Valley	•	•	•	•	•	•	•	•	•	•	•	•	•	58
CM+ Hotels and Serviced Apartments	3560 6738 3709 6600	Sheung Wan	•	•	•	•	•	•	•	•	•	•	•	•	•	50
D'HOME 239 Queen's Road East	3108 3636	Wan Chai	•	•	•	•	•	•	•	•	•	•	•	•	•	28
D'HOME 80 Robinson Road	3108 3636	Mid-Levels	•	•	•	•	•	•	•	•	•	•	•	•	•	28
Eight Kwai Fong Happy Valley	2818 1388	Happy Valley	•	•	•	•	•	•	•	•	•	•	•	•	•	46
Four Seasons Place Hong Kong	3196 8228	Central	•	•	•	•	•	•	•	•	•	•	•	•	•	18
The Fullerton Ocean Park Hotel Hong Kong	2166 7326	Aberdeen	•	•	•	•	•	•	•	•	•	•	•	•	•	22
Harbour Grand Hong Kong	2121 2665	North Point	•	•	•	•	•	•	•	•	•	•	•	•	•	36
Harbour Plaza North Point	2185 2822	North Point	•	•	•	•	•	•	•	•	•	•	•	•	•	38
Hong Kong Parkview	2812 3456	Southern District	•	•	•	•	•	•	•	•	•	•	•	•	•	34
Hotel Alexandra	3893 2888	North Point	•	•	•	•	•	•	•	•	•	•	•	•	•	40
Hotel Madera Hollywood	3913 2888	Central	•	•	•	•	•	•	•	•	•	•	•	•	•	48
The Johnston	8107 0038	Wan Chai	•	•	•	•	•	•	•	•	•	•	•	•	•	/
Kornhill Apartments	2137 8101	Quarry Bay	•	•	•	•	•	•	•	•	•	•	•	•	•	42
Lanson Place Causeway Bay, Hong Kong	3477 6888	Causeway Bay	•	•	•	•	•	•	•	•	•	•	•	•	•	30
Lanson Place Waterfront Suites, Hong Kong	2178 2288	Shau Kei Wan	•	•	•	•	•	•	•	•	•	•	•	•	•	30
Loplus@Hennessy	2625 2323	Wan Chai	•	•	•	•	•	•	•	•	•	•	•	•	•	62
Loplus@Johnston	2625 2323	Wan Chai	•	•	•	•	•	•	•	•	•	•	•	•	•	62
Pacific Place Apartments	3515 6565	Admiralty	•	•	•	•	•	•	•	•	•	•	•	•	•	26

HONG KONG

Serviced Suite	Tel.	District	Layout				Facilities								Page No.	
			Studio	1 bedroom	2 bedrooms	3 bedrooms	WiFi	Washing	Pantry	Swimming Pool	Gym	Spa	Shuttle Bus	Business Services Center		
The Repulse Bay	2292 2808	Repulse Bay	•	•	•	•	•	•	•	•	•	•	•	•	•	24
Regent Heights Serviced Apartment	2895 2555	Causeway Bay	•	•	•	•	•	•	•	•	•	•	•	•	•	56
Shama Central	3100 8555	Central	•	•	•	•	•	•	•	•	•	•	•	•	•	52
Shama Fortress Hill	3100 8555	Fortress Hill	•	•	•	•	•	•	•	•	•	•	•	•	•	52
Shama Hollywood	3100 8555	Central	•	•	•	•	•	•	•	•	•	•	•	•	•	52
Shama Island North	3100 8555	North Point	•	•	•	•	•	•	•	•	•	•	•	•	•	52
Shama Midlevels	3100 8555	Mid-Levels	•	•	•	•	•	•	•	•	•	•	•	•	•	52
Soho 69	2352 8833	Central	•	•	•	•	•	•	•	•	•	•	•	•	•	60
The Staunton	8107 0038	Central	•	•	•	•	•	•	•	•	•	•	•	•	•	/
TOWNPLACE KENNEDY TOWN	9383 9979	Kennedy Town	•	•	•	•	•	•	•	•	•	•	•	•	•	/
TOWNPLACE SOHO	7073 3300	Central	•	•	•	•	•	•	•	•	•	•	•	•	•	/
Two MacDonnell Road	2132 2132	Central	•	•	•	•	•	•	•	•	•	•	•	•	•	32
The Unit Davis	2267 8901	Kennedy Town	•	•	•	•	•	•	•	•	•	•	•	•	•	54
The Unit Happy Valley	2267 8901	Happy Valley	•	•	•	•	•	•	•	•	•	•	•	•	•	54
The Unit Morrison Hill	2267 8901	Causeway Bay	•	•	•	•	•	•	•	•	•	•	•	•	•	54
Victoria Harbour Residence	2284 2988	North Point	•	•	•	•	•	•	•	•	•	•	•	•	•	20
Yin Serviced Apartments	8200 1100	Central	•	•	•	•	•	•	•	•	•	•	•	•	•	64

- Broadband / Wifi
- Laundry Service
- Pantry
- Swimming Pool
- Gym
- Spa
- Shuttle Bus
- Business Services Center











KOWLOON & NEW TERRITORIES

Serviced Suite	Tel.	District	Layout				Facilities								Page No.		
			Studio	1 bedroom	2 bedrooms	3 bedrooms	WiFi	Laundry	Pantry	Swimming Pool	Gym	Spa	Shuttle Bus	Business Services Center			
The Camphora	8107 0038	Tsim Sha Tsui	•				•	•	•	•							/
Harbour Grand Kowloon	2996 8491	Whampoa	•	•	•		•	•	•	•	•	•	•			•	76
Harbour Plaza 8 Degrees	2126 1992	Sung Wong Toi	•	•	•		•	•	•	•	•	•	•	•			80
Harbour Plaza Metropolis	3180 6800	Hung Hom	•	•			•	•	•	•	•	•	•	•			78
The HarbourView Place @ ICC megalopolis	3718 8000	Kowloon	•	•	•	•	•	•	•	•	•	•	•				68
Harbour Plaza Resort City	2123 8888	Tin Shui Wai	•	•	•		•	•	•	•	•	•	•				86
Hong Kong Gold Coast Residences	8108 0200	Tuen Mun		•	•	•	•	•	•	•	•	•	•		•		74
The Humphreys	8107 0038	Tsim Sha Tsui	•	•	•		•	•	•								/
Kowloon Harbourfront Hotel	2186 9036	Hung Hom			•		•	•	•	•	•	•	•		•		82
The Kowloon Hotel	2929 2888	Tsim Sha Tsui	•	•			•	•							•		84

KOWLOON & NEW TERRITORIES

Serviced Suite	Tel.	District	Layout				Facilities								Page No.		
			Studio	1 bedroom	2 bedrooms	3 bedrooms	WiFi	Laundry	Pantry	Swimming Pool	Gym	Spa	Shuttle Bus	Business Services Center			
Madera Residences	3190 9888	Jordon	•	•			•	•	•	•							88
Sai Kung Serviced Apartment	2407 6161	Sai Kung			•		•	•	•								94
Shama Tsim Sha Tsui	3100 8555	Tsim Sha Tsui	•	•	•		•	•	•	•				•			52
TOWNPLACE WEST KOWLOON	7073 3377	West Kowloon	•	•	•	•	•	•	•	•	•	•	•			•	72
Vega Suites	3963 7888	Tseung Kwan O	•	•	•	•	•	•	•	•	•	•	•	•	•		70
Xi Hotel	2739 7777	Tsim Sha Tsui	•	•			•	•							•		90
Yi Serviced Apartments	8200 1100	Tsim Sha Tsui	•	•			•	•	•	•				•		•	92

 Broadband / Wifi	 Laundry Service	 Pantry	 Swimming Pool
 Gym	 Spa	 Shuttle Bus	 Business Services Center





AIGBURTH • BRANKSOME GRANDE • TAVISTOCK

The Home of Prestige

Laced along the stunning Mid-Levels locations of May Road and Tregunter Path,
a signature collection of premier properties nestles within verdant greenery.
Aigburth, Branksome Grande and Tavistock – their names synonymous with luxury and distinction.
From your Dress Circle elevation, view a panorama of iconic Victoria Harbour and
the vibrant cityscape. A pre-eminent address in Hong Kong,
with exceptional management services – the pinnacle of prestige.

TREGUNTER PATH • MID-LEVELS • HONG KONG



嘉里物業代理有限公司
KERRY REAL ESTATE AGENCY LIMITED

residentialleasing@kerryprops.com

Leasing Hotline : (852) 2967 2200

WhatsApp : (852) 9151 3126



WeChat ID