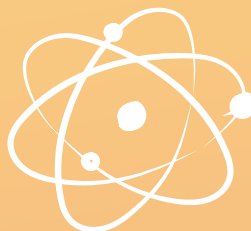




International Schools Guide



THREE BAYS

7 Stanley Beach Road, Tai Tam Bay, Hong Kong



Prestigious Townhouse in Tai Tam Bay

Located at the idyllic Tai Tam Bay, residents are greeted by the spectacular views of the three beaches and most of Stanley everyday.

The nine spacious houses are elegantly appointed, drawing on inspirations from the major design capitals of the world.

4 en-suites bedrooms 3,870 & 3,960 s.f. (M.F.A.) / 3,021 & 3,096 s.f. (S.F.A.)



Leasing Enquiries:

+852 8107 0038

leasingcs@sino.com ☎ +852 6396 7989



The image/picture has been edited and processed with computerized imaging techniques. It shall not be taken as depicting or representing the actual condition or appearance of the development and is for reference only. The surrounding environment, buildings or facilities may change from time to time. Please conduct an onsite visit for a better understanding of the development, its surrounding environment and the facilities nearby. This promotional material does not constitute and shall not be construed as giving any offer, representation, undertaking or warranty, whether express or implied.



13 Bowen Road, Mid-levels, Hong Kong



Distinguished Homes in Mid-levels

Nestled in Bowen Road in Mid-levels, a coveted area neighbouring consulates and iconic developments, Bowen's Lookout blends convenience of living and access to all corners of the city, with Admiralty and Central just a few minutes drive away.

4-bedroom apartment 2,322 & 2,388 s.f. (M.F.A.) / 1,635 & 1,702 s.f. (S.F.A.)
penthouse duplex 4,050 s.f. (M.F.A.) / 2,739 s.f. (S.F.A.)



Leasing Enquiries:

+852 8107 0038

leasingcs@sino.com ☎ +852 6396 7989



The image/picture has been edited and processed with computerized imaging techniques. It shall not be taken as depicting or representing the actual condition or appearance of the development and is for reference only. The surrounding environment, buildings or facilities may change from time to time. Please conduct an onsite visit for a better understanding of the development, its surrounding environment and the facilities nearby. This promotional material does not constitute and shall not be construed as giving any offer, representation, undertaking or warranty, whether express or implied.



International schools adopt an all-rounded education approach

It may come as a pleasant surprise to many parents that in opting for international school for their children's education, to find that they actually seem to rejoice in attending classes every day.

It is widely acknowledged that the quality of the formative years and early schooling impacts children's subsequent adult life. International school children are generally perceived to be more lively, joyful, confident, open-minded and warm-hearted because the holistic education they receive not only stand them in good stead for further education, whether locally or overseas, but also expand their horizon and hone their character development.

International schools not only provide the facilities, the environment, and the support for students, but also work in partnership with parents to bring out the best in individuals. Their inter-disciplinary approach with a STEAM focus is designed to equip students to face the challenges of the 21st century.

Parents like what they see in their broader curriculum and well-researched teaching methodology, not to mention digitally astute teachers and more caring and individual attention because of smaller classes. In addition to academic pursuits, their students are excellent communicators as they come into contact with school mates of different ethnic backgrounds. With no homework pressures, they have the time to pursue sports and the arts, and develop such invaluable attributes as reasoning power, creativity, problem-solving skills, teamwork, empathy, self-discipline, and more.

This guidebook contains updated information on international schools, and provides answers to questions to help you make the optimum choice for your children.


Features Editor



 INCLUSIVE EDUCATION	 THREE PROGRAMME IB WORLD SCHOOL	 EXCEPTIONAL LOCATION	 GLOBAL ALUMNI NETWORK
 LOW STUDENT:TEACHER RATIO	 COMMITMENT TO INTERNATIONALISM	 AWARD-WINNING FACILITY	 STRONG HOME-SCHOOL PARTNERSHIP

Exploration Day Sign Up



-  HongKongAcademy
-  hongkongacademy
-  Hong Kong Academy
-  +852 2655 1111
-  admissions@hkacademy.edu.hk

Hong Kong Academy is a non-profit, international through-train school offering a joyful and rigorous education for children aged 3 to 18 years. HKA students hone the competencies, knowledge and skills they need to be successful today and in the future.

A non-profit international IB World School
PLAYGROUP | KINDERGARTEN | PRIMARY | SECONDARY

33 Wai Man Road, Sai Kung, New Territories, Hong Kong SAR



Our Proven 'Finding the Fit Formula' to eliminate 80% of the risk and apply to just THREE schools to get ONE offer

Are you feeling that getting your child a spot in their best-fit international school is complicated, competitive and costly?

Have you been applying to schools and seem to be hitting a brick wall? You choose schools that seems to meet your needs and, yet, no offers?



Is that you?

You're not alone. We've been supporting parents in Hong Kong to be successful in school admissions since 2012. So, I do have the solution...

SIX Proven Steps to Get into the Best Fit School

- 1. Confirm your Criteria
Too often, parents forget what they want and feel that they need to settle for something else. If you take time to confirm your criteria at the start, you'll be more likely to stick to what fits.
- 2. Clarify your Child's Ability
You want to be as certain as possible that, once you submit an application and your child is invited for an assessment, your child will pass. To get that far and then get a 'No' can be devastating. So a short test is a good idea.
- 3. Compile your Smart Shortlist
Once you are clear on your criteria AND your child's ability, you are ready to research which schools fit and which ones are likely to have space when you need it.
- 4. Check with the Schools
You'll want to be sure you understand the admissions and assessment process completely for the schools you're interested in. If you're applying for a year without additional places, you'll want to ascertain your child's chances too.

- 5. Complete the Application
This should be the easy bit! Submitting a complete and correct application is not always as straightforward as it may seem, especially when essay questions are required. Ensure your application is as strong as it can be.
- 6. Confidently prepare for Assessment
A little preparation goes a long way. NOT lots of tutoring, but some targeted practice where it's needed so that your child feels confident on the day and you know you've done all you can.

These SIX steps are included in our signature program - Successful School Admissions - in our 'Finding the Fit' Formula, our proven process. This is how we eliminate 80% of the risk and apply to just THREE schools to get ONE offer.



Learn more at www.topschoolsadmissions.com

Spend THREE hours with me. I'll take you through the process I've been using to support my VIP clients.

I have walked this talk with my own children and supported thousands of parents just like you since 2012. This is NOT an application factory ("Spray & Pray"); this is not admin; it's STRATEGY that works. Would you like a strategy that just works?

No more spending hours researching online and compiling beautiful spreadsheets, visiting umpteen schools only to arrive at disappointment.

Save time, money & worry

This is for you if you are genuinely ready to Find the Fit for your child and seeking a preschool, primary or secondary place in 2025 or 2026.

On Day 1, you'll make the ONE key decision you need to make early.

On Day 2, you'll learn how to apply the proven process to create a smart shortlist

On Day 3, you'll create an Assessment Action Plan.



Learn more about Top Schools here:
<https://topschoools.link/Our-socials>



Summer Learning at HKA

International schools typically take a long summer break. Does this affect student's academic progress and how do schools help students back into good habits upon their return? We discussed this with Joanna Crimmins, Secondary School Assistant Principal at Hong Kong Academy.

Hi Joanna. Please could you introduce yourself and share a little about your role at HKA.

Hello. I am Secondary School Assistant Principal and originally from Wales in the UK. I started my teaching career as a drama teacher and taught in the UK, Taiwan and Thailand before coming to Hong Kong. I've been at HKA for 10 years and as Secondary School Principal my focus is on student pastoral care which means I work closely with our counsellors to deliver a comprehensive wellbeing programme, as well as collaborating with the MYP and DP coordinators on curriculum and student pathways.

How does HKA approach student learning during the long summer break?

At HKA we believe that the summer holidays are a time when students should take the opportunity to relax but also to apply and extend their learning in different contexts. In Grade 6-9 we do not issue any summer work, however, in the last

few weeks of school we do encourage them to think about summer learning opportunities. For example a student might go on a family holiday and practise a language, spend time helping out at a service programme, or pick up new skills or interests.



Grade 10's are given optional summer work which they can complete to help them prepare for their IB Diploma and high school classes. We share them into a bank of resources which link to the G11 and 12 course information, and core subject briefs which outline what topics are going to be covered and what skills will be important in their final two years of school. For example, the IB DP English paper 1 exam is an unseen text so reading or listening to new materials will help the student prepare for that by practising text analysis, interpretation and evaluation skills they will need to use in that exam.

In their final 2 years of school every HKA student has their own unique combination of course selections. Grade 11's are each issued with an individual summer plan which outlines all the IB DP coursework, Extended Essay (EE) and Internal Assessments (IA) that they need to work on, as well as recommendations for personalised learning which will support any areas of growth which the end of year assessments highlighted.

When the students do return to school how do they usually show up and how do you get them back into the school routine?

Students usually show up really excited to be back. The first day is filled with smiles and high fives and there's quite a buzz in the corridors and classrooms. Our first week back is intentionally designed to enable the students to reconnect and get familiar with expectations. On the first day we start with Advisory where up to 15 students meet with their advisory teacher, greet new classmates, and set up group norms and expectations for the year ahead. A similar pattern is followed in each of the subject classes. By the end of the first week back the students are typically quite tired and in need of the weekend to recover - it's a good tiredness and they've adjusted back to the school routine, are familiar with their new classmates and teachers, and ready for the learning ahead.



Anything more you would like to add?

Yes, I think it's important to point out that we encourage students to apply their summer experiences and learning in ways which are unique to HKA. Summer projects can be the basis of student-led Flex projects, or can be added to their Global Citizen Diploma portfolio which is a graduation requirement for all HKA students.

HKA is a non-profit through train school for students aged 3 - 18 years old. All students graduate with an HKA Diploma and Global Citizens Diploma, the majority also complete IB DP courses. Find out how their unique pathways might benefit your child by joining their Academic Pathways Evening on 26th September, or get insight into their teaching, facilities and community by attending Exploration Day on 19th October.



Academic Pathways Evening



Exploration Day

Hong Kong Academy

33 Wai Man Road, Sai Kung, New Territories, Hong Kong

Tel: 2655 1111

Email: admissions@hkacademy.edu.hk

Website: www.hkacademy.edu.hk



Top tips to apply for a private/international school in Hong Kong



Are you struggling to decide which private/international school in Hong Kong suits your child - Don't worry we have you covered! Specialist Education Advisory (SEA) founder and Registered Teacher Jessica Yuen has been supporting students as a teacher in international school and as an education counsellor for over 10 years.

Top tips to consider when applying for a private/international school in Hong Kong.

1. Your child's ability in English. Most international schools require that your child undertake an English language test, which assesses their reading, writing, speaking and listening.
2. Matching the right school with the right family. We recommend visiting the school to make sure you understand the ethos of the school and that you as parents are happy as well as your child!
3. Ask your teachers at your child's school for references and inform them that schools may reach out to them. Many schools particularly applicants from upper primary and secondary school will ask your teacher for a reference.



4. Are you looking for your child to be proficient in English and Mandarin? If so, bilingual schools such as CIS, Dalton, ISF, IMS, Kingston, VSA and YCIS all offer strong English and Mandarin programs. It is more beneficial for children to be exposed to bilingual education at a younger age learning both languages simultaneously. The importance of bilingualism in Hong Kong cannot be emphasised enough where English, Cantonese and Mandarin are used every day in Hong Kong.

5. Most schools open their applications one year in advance so this year students would be applying for the academic year 2025/26 for August 2025 entry. School deadlines vary from 1-30 September, others close on 1 October or 1 November. Some schools may be more flexible, but it is best to check as every school is different. Many schools also require parents to attend information sessions or may ask parents to complete questionnaires.

Navigating Hong Kong's education system can be challenging, but with the right information and guidance, you can make the best decision for your child's future. We hope this provides some clarity in applying to private/international schools in Hong Kong

Remember, the goal is to find a school where your child can thrive academically, socially, and personally, setting them up for a bright future.



Specialist Education Advisory

Office 1401, 14/F Hermes Commercial center, 4-4A Hillwood road, TST HK
Tel: 2569 5400
Whatsapp: 9174 7418
Email: info@specialistedu.com.hk

Where children find their own future

Bespoke Hong Kong International School Admissions

Jessica Yuen
Founder, Migration & Education Specialist



- ✓ Registered Teacher
- ✓ Native English Speaker
- ✓ Over 15+ years of teaching experience

SPECIALISTEDU.COM.HK

Our Service

We have over 10 years experience in admissions consultancy in Hong Kong International Schools.



Initial meeting



Readiness Assessment



Arrange School Tour



School selection/application



Review school offers



School placement



First-hand experience of Hong Kong International School as students



Personalised Service



Assessment of GL & Cat 4



Admissions Experts



One-on-One Consultation

Schedule a consultation now!

+ 852 2569 5400 +852 9174 7418

INFO@SPECIALISTEDU.COM.HK

OFFICE 1401, 14/F HERMES COMMERCIAL CENTRE, 4-4A HILLWOOD ROAD, TST HK



Contents

- 2 Editor's Message
International schools adopt an all-rounded education approach
- 4 Top Schools
Our Proven 'Finding the Fit Formula' to eliminate 80% of the risk and apply to just THREE schools to get ONE offer
- 6 Hong Kong Academy
Summer Learning at HKA
- 8 Specialist Education Advisory
Top tips to apply for a private/international school in Hong Kong
- 16 Anchors Academy (Primary School), Anchors Academy Affiliated International Kindergarten cum Nursery
A Modern 4-literacy approach to 21st Century Learning
- 18 Anfield School
Anfield - Educating the Hearts and Minds of Hong Kong



VICTORIA SHANGHAI ACADEMY



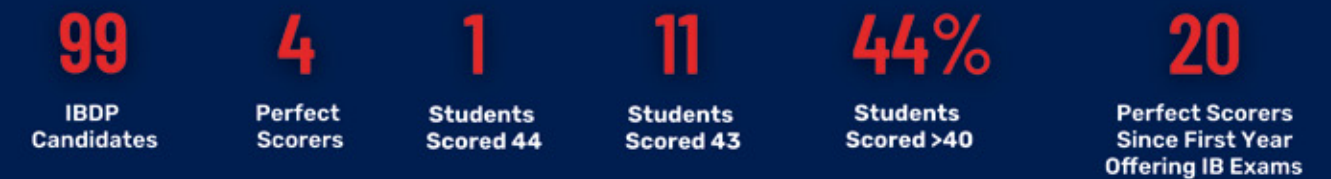
Celebrates the Class of '24 remarkable IB results with four perfect scorers, one 44 points, eleven 43s, and 44% attaining 40+ points, securing 443 offers from 155 universities worldwide

100% Pass Rate
49% Bilingual
Diploma Awarded

Our IBDP Results (Class of 2024)



443 UNIVERSITY OFFERS
155 UNIVERSITIES AROUND THE WORLD



VSA Graduates' 24 University Offers

- Canada**
 - University of Toronto
 - University of British Columbia
 - McGill University
 - Brock University
 - Carleton University
 - University of Calgary
 - University of Waterloo
 - and more
- United States**
 - Stanford University
 - Duke University
 - UC Berkeley
 - Barnard College, Columbia University
 - UC Los Angeles
 - Georgetown University
 - University of Southern California
 - UC San Diego
 - New York University
 - Boston College
 - Boston University
 - Berklee College of Music
 - Middlebury College
 - Savannah College of Art and Design
 - The New School
 - University of Wisconsin-Madison
 - and more
- United Kingdom**
 - University of Oxford
 - University of Cambridge
 - Imperial College
 - University College London
 - London School of Economics and Political Science
 - University of Edinburgh
 - University of St. Andrews
 - University of the Arts London
 - Durham University
 - Cardiff University
 - Newcastle University
 - University of Bath
 - University of Bristol
 - University of Sheffield
 - and more
- Mainland China**
 - Peking University
 - University of Nottingham Ningbo
- HKSAR**
 - University of Hong Kong
 - Chinese University of Hong Kong
 - Hong Kong University of Science and Technology
 - Hong Kong Polytechnic University
 - City University of Hong Kong



"International Schools Guide" is published by The Standard



Display Advertising Department
3/F, Sing Tao News Corporation Building,
7 Chun Cheong Street, Tseung Kwan O Industrial Estate,
Tseung Kwan O, New Territories, Hong Kong
Advertising Hotline: (852) 3181 3311
Fax: 2758 3579
All rights reserved.

Features Editor: Andy Ng
Designer: Saki Iu
Business Director: Irene Chan
Website: www.thestandard.com.hk
Email: advertise@thestandard.com.hk

Contents

- 20 Christian Alliance International School
Learning and Celebrating Together as One Community
- 22 Malvern College Hong Kong
Discovering Holistic Education at Malvern College Hong Kong
- 24 American School Hong Kong
Nurturing Potential: The Holistic Approach to Education at ASHK
- 26 Bloom KKCA Academy
A Bilingual School of Innovation
- 28 Christian Alliance P.C. Lau Memorial International School
Elevating the curricula of STEM to STREAM
- 30 English Schools Foundation
ESF - A WORLD CLASS INTERNATIONAL EDUCATION FOR YOUR CHILD
- 32 Fairchild Canadian Academy
Feel the Wonder of Play at Fairchild
- 34 Invictus School Hong Kong
Unlock Your Child's Potential for Success with a Singapore-Inspired Education



Admissions Open For Academic Years 2024-25 and 2025-26



MALVERN ALL-THROUGH SCHOOL

Malvern College Pre-School Hong Kong (MCPS), caters to children from Pre-Nursery to K2, with all graduating pupils guaranteed a place in Prep 1 at Malvern College Hong Kong (MCHK), providing they meet the admissions requirements. We provide our pupils with a clear and progressive pathway from pre-school through primary and secondary education, leading to graduation.

Malvern College Hong Kong (MCHK) is an IB World School offering the PYP, MYP, and DP curriculum from Prep 1 (Y1) to Upper Sixth (Y13). MCHK provides a holistic education that nurtures pupils' ethics, global understanding, critical thinking, leadership, and teamwork, alongside academic success.



To discover more

malverncollege.org.hk | malvernpreschool.hk

Contents



- 36 Korean International School
All Through School - UK Curriculum - Academic Excellence Since 1994
- 38 Norwegian International School
Embracing Nature, Nurturing Minds and Engaging our Community: The Spirit of NIS
- 40 Nord Anglia International School Hong Kong
Thinking beyond traditional education to transform learning
- 42 Ontario eSchool
Secure Admissions to World-Class Universities with Ontario eSchool
- 44 Salesian School
Salesian School Future Education : OECD 2030 Learning Compass & U.F.O. Curriculum
- 46 Shrewsbury International School Hong Kong
One School: Two Pathways
- 48 YMCA Christian Academy
A Small School With a Big Heart
- 50 Directory



安基司學校 (小學)
安基司學校附屬國際幼稚園暨幼兒園

Anchors Academy (Primary School)
Anchors Academy Affiliated International Kindergarten cum Nursery

School license number
PS: 622079 KG: 622060



Anchors Academy gathers STEAM

A 4-Literacy approach provides the skills to flourish in the 21st Century

Primary

- UK National Curriculum, HK Chinese (Putonghua and Traditional Characters) and Maths (Singapore CPA Approach) Curricula
- Advanced and Innovative STEAM & Digital ICT curricula
- Excellent Extra-curricula and Afterschool Activities Programmes
- VR/AR Innovation Labs and State-of-the Art Facilities

Primary Admissions



International Kindergarten cum Nursery

- UK EYFS Curriculum and Hong Kong Chinese (Putonghua and Traditional Characters)
- Learn through Play methodology
- Excellent Extra-curricula Programmes
- Innovation Lab, Music and Art Rooms, State-of-the Art Facilities

International Kindergarten and Pre-Nursery Admissions



Anchors Academy Affiliated International Kindergarten cum Nursery

Admission Hotline: 3860 5655

Class
Pre-Nursery
K1(AM/PM Class)
K2-K3(AM/PM, Whole day class)
Tuition fee (2024-25)
Half Day Class \$102,000 (With 10 installments)
Whole Day Class \$146,800 (With 10 installments)

Anchors Academy (Primary School)

Admission Hotline: 3860 5605

Class
Y1-Y3(Year 2024-25) Y1-Y4(Year 2025-26)
Tuition fee (2024-25)
\$146,800 (With 10 installments)
Annual Capital Levy (2024-25)
\$24,000 (with 10 installments)

Book a School Tour



Address

1 Ko Po Path, Kam Tin North, Yuen Long, New Territories, Hong Kong



A Modern 4-literacy approach to 21st Century Learning

A Through-Train School of Innovation

On the picturesque banks of the Kam Tin River, Anchors Academy's state-of-the-art 150,000m² campus hosts one of Hong Kong's most modern and innovative schools featuring its own indoor Swimming Pool, Multipurpose Sports grounds, modern classrooms, 2 VR innovation labs, and specialist subject-specific facilities for Music, the Arts, STEAM and Digital Technology.

With an established Pre-Nursery, Kindergarten, Primary School, and the development of another exceptional Secondary School campus around the corner, Anchors Academy can provide a one-stop destination for parents looking to instil attributes and skills to tackle the demands of the 21st century.

Primary School Curriculum and 4-Literacy Approach

Anchors Academy offers a unique 4-literacy approach to learning with a strong emphasis on English Literacy, Chinese Literacy, STEAM and Digital Literacy.

Combining the best of international curricula using the UK national curriculum, Hong Kong Chinese (Putonghua with traditional characters), the Singapore approach to mathematics and an advanced school-based STEAM and Digital ICT curriculum, we can ensure students acquire excellent 21st-century skills to tackle an ever-growing technological and globalised world.



STEAM & Digital Literacy

With an excellent team of digitally astute educators and specialist STEAM teachers, we can integrate STEAM and Digital education across curriculum. Our students have diverse opportunities to learn through exploration and project-based learning, and students from a young age can master computation, digital systems, and programming as they create content in a range of mediums, including coding, animation, video, and VR/AR.

An Ethos and Values-driven Education

In addition to academic endeavours, we stress huge importance on whole person development and our ANCHORS values are infused into every aspect of our school so that we remain committed to our mission and vision of fostering a compassionate community, that contributes positively to both Hong Kong society and the wider world.

- A**ct with Integrity
- N**urturing
- C**ommunication and Confidence
- H**ealth and Happiness
- O**ptimism and Opportunity
- R**espect and Responsibility
- S**ervice to the Community

Extra-Curricular and After School Activities

To enhance students' learning experiences, our school provides excellent learning opportunities with our comprehensive extracurricular and after-school programmes to develop key areas of student development under the following categories: Academic & Logical Development, Technology & Digital Intelligence, Sports & Athletics, Music & Visual Arts, Student Voice and Leadership, and Community Service, Charity, and Sustainability.



Kindergarten Curriculum

Anchors Academy Affiliated International Kindergarten cum Nursery, adopts the UK Early Years Foundation Stage (EYFS) curriculum with the methodology of "Learn through Play". Students learn through hands-on experiences following a thematic approach in learning. STEAM is embedded within Anchors curriculum with students gaining knowledge and understanding through regular visits to the Innovation Lab and their time at the STEAM wall.



Overseas Excursions, School Trips and Life-Wide Learning

As part of our curriculum, our school regularly exposes all our students to the world around us through school trips, excursions, and life-wide learning experiences. These activities broaden their horizons and provide valuable opportunities for learning beyond the classroom. As students grow through the school, students will also have regular opportunities to travel overseas for a variety of sports, language cultural exchanges and much more.

Admissions – Applications

Primary



International Kindergarten



Anchors Academy (Primary School), Anchors Academy Affiliated International Kindergarten cum Nursery

1 Ko Po Path, Kam Tin North
Yuen Long

Tel: 3860 5605

Email: AAPSinfo@anchorsacademy.edu.hk
AAKGinfo@anchorsacademy.edu.hk

Website: www.anchorsacademy.edu.hk

Facebook & Instagram: Anchors Academy



Anfield - Educating the Hearts and Minds of Hong Kong



Now in its 25th year, Anfield continues to grow and develop, with the new Anfield St. Bosco Koon Ying School opened in Yuen Long earlier this year. Anfield follows the Early Years Foundation Stage (EYFS) and English National Curriculum to provide a quality education for all students. Emphasis is placed upon student engagement and learning through a creative and imaginative approach, where students are encouraged to become independent and resilient learners. Global citizenship and the use of technology, provides students with the opportunity to learn about their place in the world and prepares them for life in the 21st Century. The SEND provision within the St. Bosco Centre (Tai Wai) and the St. Bosco Koon Ying School (Yuen Long) ensures Anfield offers high quality support for all.

The use of the EYFS and English National Curriculum across all campuses ensures a robust, structured and quality education for all students. This internationally recognised education system prepares students for successful learning beyond primary age. It encourages them to seek opportunities and developments within their own interests, as well as through



the learning opportunities presented by the high-quality teaching staff. Whilst emphasis is placed on English as the main medium of instruction, Anfield also offers a high standard of Chinese learning, with daily Mandarin lessons for all students from Nursery onwards. Written Chinese is traditional and pinyin is used in Years 1-2. Pupils explore Chinese culture through the Chinese Studies programme.

If parents are looking for a school which cares about their children in all aspects; socially, emotionally and academically, then Anfield is the place for them. Each campus offers an exceptional learning environment, where dedicated teachers help students to discover new and exciting pathways through their learning. We empower our students to become leaders and 'change-makers' through a variety of student leadership opportunities; School Council, International Mindedness Ambassadors and Digital Leaders. These unique roles give students the chance to share their creative ideas and contribute to the development and daily running of our schools.



At Anfield, our Catholic ethos and strong family values ensure each and every child is given opportunities to grow and develop to their full potential within a supportive and caring environment. We believe that every child possesses unique talents, and we strive to create learning environments which value our student's voice and ideas. Students experience stimulating activities within their classrooms and are encouraged and supported to become independent thinkers.

Anfield School

No. 1, Lung Pak Street, Tai Wai, Statin, N.T.

Tel: 2692 8823

Email: enquiry@anfield.edu.hk

Website: <https://anfield.edu.hk/>



Admissions Open 2025/2026

- Anfield International Kindergarten (Kowloon Tong)
- Anfield International Kindergarten & Nursery (Whampoa)
- Anfield St. Bosco Koon Ying School (SEND)
- Anfield School

REGISTER NOW

admissions@anfield.edu.hk
www.anfield.edu.hk





Learning and Celebrating Together as One Community

At the main reception area of Christian Alliance International School (CAIS), there is a vibrant wall installation that features the five core values of the school: love, wisdom, integrity, service, and community.



As the 2024/2025 school year commences, CAIS has chosen “Community: Life Together” as its school theme for the year. Head of School, Richard Vanderpyl, explains, “It comes from the Bible in Psalm 133:1: How good and pleasant it is when God’s people live together in unity!”

Throughout the year, there are many opportunities where students connect with the community. With *The Voices of CAIS* and Thanksgiving Carnival, two of the largest community events in the school calendar this year, Vanderpyl believes that these will be wonderful opportunities for the whole school and wider community to come together and bring the school theme truly alive. CAIS High School Principal, Daniel Schick, says, “As a school community of over 1,600 students, we are akin to an intricate tapestry, each student and teacher with their own style, abilities, and personalities. Together, we are strong and beautiful, interwoven as a community.”

In the last school year, CAIS students showcased their extraordinary talents to the community by presenting the

timeless Broadway musical, *Oliver! JR.* for three evenings. The enthusiastic applause from the full house audience echoing throughout the hall was a sounding validation of the astounding talents and hard work of the cast and crew. The school’s world-class facilities, such as the Alliance Hall, Drama Studio, full-size orchestra rehearsal room, and rooftop soccer pitch provide students the environment to explore their interests, as well as grow and develop as confident and holistic individuals.



universities and institutions extending offers to the 2024 cohort. Graduates have been accepted to pursue diverse fields including medicine, psychology, pharmacy, kinesiology, architecture, engineering, aviation, education, and law, among others. As the school’s 2023/2024 Alberta Valedictorian, Priscilla said in her graduation speech, “For many of us, high school wasn’t simply a place of learning. Instead, it was a place where we have built relationships and found our passions.”



Through connecting with the community, students embrace the chance to make a difference and develop their potential to become global citizens. Vanderpyl explains, “Our vision is to nurture students’ academic ability alongside their character, which is being kind and compassionate towards other people, a willingness to serve and have good spiritual development—those are what will make a difference to the community, and the world.”

CAIS is a through-train school that values both the personal and academic development of students. The school provides a unique transformative educational experience for children aged from 5 to 17 at its preparatory, lower and upper primary and secondary sections. It is the only international school in Hong Kong that offers three education pathways for its students, including the Alberta (Canada) curriculum, International Baccalaureate Diploma Programme (IBDP), and Advanced Placement courses. Students are able to choose the curriculum that builds on their strengths and help them become effective lifelong learners.

The academic results of CAIS students have gained recognition from universities worldwide, with close to 120



Christian Alliance International School

33 King Lam Street, Lai Chi Kok, Kowloon, HK

Tel: 3699 3862 / 3699 3863 / 3699 3865

Email: admissions@caisbv.edu.hk

Website: www.caisbv.edu.hk



Discovering Holistic Education at Malvern College Hong Kong

Malvern College Hong Kong (MCHK) is an esteemed IB World School offering a comprehensive educational experience through the Primary Years Programme (PYP), Middle Years Programme (MYP), and Diploma Programme (DP). In an era that often prioritizes academic success, MCHK stands out by emphasizing holistic education, nurturing not only scholars but well-rounded individuals. Headmaster Paul Wickes states, "While academic achievement is central to all that we do, our commitment to providing a truly holistic education ensures that education outside of the classroom is of equal importance, whether on the sports field, in the arts, or in the wider community."

Seamless Educational Journey

MCHK provides a continuous educational pathway from early years to secondary school, beginning with Malvern College Pre-School Hong Kong (MCPS). With two campuses—Island West and Coronation Circle—MCPS offers Playgroup (6 - 30 months) and Pre-school (2-5 years) programmes based on the Early Years Foundation Stage (EYFS) curriculum. The bilingual environment fosters essential skills in both English and Mandarin and includes a unique

Forest-Beach School programme that inspires an appreciation for nature.

Nurturing the Whole Person

At MCHK, the development of the whole person is integral to both the curriculum and co-curricular activities. Emulating the pastoral care tradition of Malvern College UK, with over



159 years of history, MCHK emphasizes each child's well-being. The robust pastoral care system ensures that every pupil feels valued and supported, empowering them to reach their full potential. Unique talents are celebrated through a comprehensive scholarship programme that spans eight areas, allowing MCHK to invest in students with exceptional abilities.

Exploring the Great Outdoors

Outdoor programmes enhance cognitive, emotional, and physical development at MCHK.



The Forest-Beach programme provides pupils in Prep 1 to 3 with opportunities for outdoor exploration, fostering a lasting connection with nature and teaching crucial ecological concepts. The commitment to outdoor learning includes expeditions and overnight camps that challenge students to step outside their comfort zones, promoting resilience and adaptability.

Fostering a Spirit of Service

Education at MCHK places a strong emphasis on social responsibility through service learning. Young pupils engage in volunteering initiatives that promote humility and dedication to community service. Through partnerships with organizations like Crossroads Foundation, students participate in immersive experiences addressing real-world issues. A notable example is when Foundation Year 1 pupils organized a bake sale, raising over HKD 5000 for those in need, reflecting the school's commitment to fostering a culture of kindness.

Experiential Learning in the Classroom

MCHK employs a project-based, experiential learning approach, empowering pupils to engage in creative and



collaborative projects. Significant initiatives, like the PYP Exhibition and the Personal Project Exhibition, enhance critical thinking, research, and communication skills. These experiences prepare students for future challenges and facilitate a smooth transition into the IB Diploma Programme.

Join the Malvern Community

Malvern College Hong Kong integrates academic rigor, outdoor exploration, service learning, and experiential education, nurturing compassionate, resilient, and well-rounded individuals. Our educational focus extends beyond exam preparation to cultivate leaders ready to make meaningful contributions to society. Families are invited to embark on this journey of discovery, supported by a legacy of excellence in holistic education.



Malvern College Hong Kong

3 Fo Chun Road, Pak Shek Kok, New territories, Hong Kong

Tel: 3898 4688

Email: admissions@malverncollege.org.hk

Website: www.malverncollege.org.hk



Nurturing Potential: The Holistic Approach to Education at ASHK



American School Hong Kong (ASHK) embraces a holistic approach to nurturing students, encouraging them to reach their fullest potential by balancing academic rigor and personal interests. At the heart of this approach lies the belief that education extends beyond textbooks and examinations, encompassing rich experiences that shape well-rounded individuals ready to navigate the complexities of the modern world.

ASHK provides students with a strong and rigorous academic program, combining comprehensive American curriculum standards with a STEAM focus, a multi-stream Mandarin language program and the world-renowned IB Diploma in Grades 11 and 12. While academic excellence remains a cornerstone of the ASHK experience, the school places equal importance on fostering social, physical, emotional, and creative development in its students. Recognizing that intellectual growth is one facet of a well-rounded individual, ASHK strives to create an environment where students are encouraged to explore their passions, develop their talents, and cultivate a sense of balance in all aspects of their lives.

ASHK provides a comprehensive range of Extra-Curricular Activities (ECAs) to offer students opportunities to explore new interests and delve deeper into existing passions. From student council to Taekwondo, filmmaking to volleyball, music engineering to maths games, art workshops to dance, the ECA program at ASHK covers a wide range. These activities are not mere pastimes but are integral to the school's commitment to providing a holistic education that nurtures values of leadership, teamwork and resilience.

The recent achievements of the ASHK Wushu Team stand as a testament to the success



of this holistic approach. They secured the championship at the prestigious 16th International Wushu Competition and clinched a team gold medal at the 5th Hong Kong World Martial Arts Competition. Individually, each team member shone brightly, earning many awards that speak to their dedication, perseverance, and exceptional skill.



By nurturing students with a blend of academic rigor, personal interests, and values-based learning, the school nurtures individuals who are not just academically proficient but socially adept, emotionally resilient, and creatively expressive. The ASHK experience is not just about imparting knowledge; it is about igniting a passion for learning, instilling a sense of purpose, and nurturing the potential within each student. Learn more about ASHK by contacting our Admissions team, booking a school tour or visiting our website www.ashk.edu.hk.



American School Hong Kong

6 Ma Chung Road, Tai Po,
New Territories, Hong Kong
Tel: +852 3919 4111

Email: admissions@ashk.edu.hk
Website: www.ashk.edu.hk



OPEN DAY

Experience our exceptional learning environment & vibrant community!

Sat. Sep. 28 | 10 a.m. to 2 p.m.

Come to our Open Day to enjoy an application fee waiver* for applications submitted before Oct 19!

Meet our Experienced Faculty

Discover our IBDP & US Curriculum

Tour our Tai Po Campus

Enjoy Interactive Faculty-Led Activities

Prizes & Fun Games

REGISTER



*Application fee waiver for attendees applying for mid-year 2024-25 or August 2025 entry.

Bloom KKCA Academy

A Bilingual School of Innovation

Our school is built with an eye toward the future. Founded by educators, entrepreneurs, and engineers, Bloom KKCA Academy and Saint Too Bloom Academy is a through-train school, provides an innovative G1-12 project-based education.

Bloom KKCA Academy
Tel: 2311 2268
Email: admissions@bloom.edu.hk
Website: www.bloom.edu.hk

Bilingual and Multicultural

We integrate both Chinese and English into different subjects from math to art as well as our daily campfires, projects, and field trips. The 50 / 50 split reinforces our respect for all cultures and communities and gives our students ample opportunity to function comfortably, competently, and confidently in both languages.

World-Class STEM Education

Unlike a traditional STEM classroom, where science experiments are pre-designed, Bloom KKCA Academy focuses on the design of the experiment itself. The STEM Program draws from the Next Generation Science Standards (NGSS), a research-based curriculum developed and designed by Nobel Laureates along with a team of education professionals.



Positive Education

In our program, wellbeing, the individual, self-awareness, self-expression, and citizenship are part of our DNA so that students, faculty, and staff can flourish. Daily campfires and low student-teacher ratios allow us to check in with one another and focus on the whole child. Our weekly excursions also promote our students' connection to the city and the planet. This regular interaction with the wider community instills a sense of belonging and provides opportunity for positive values to be translated into caring actions.

Weekly Field Trips

Our campus extends far beyond the classroom. Bloom students embark on weekly field trips, from organic farms to science experiments at the Aberdeen Reservoirs. Students make sense of what they have learned in the classroom out in the real world and bring questions, observations, that motivate them to pursue learning within the classroom.

EXPLORE **C**REATE **S**HARE

「探索 創造 分享」

Come and experience our innovative education first-hand! Students will immerse themselves in a sustainable workshop that will not only inspire them to think but also to put their ideas into practice. While parents will be having a campus tour to know more about Bloom learning environment.

Meet Us!
與我們見面!



For Ages
適合年齡 5-12



Saint Too Bloom Academy

First Entrepreneurship School in HK

Saint Too Bloom Academy
Tel: 2216 5200
Email: admissions@bloom.edu.hk
Website: www.secondary.bloom.edu.hk

Bloom unleashes the potential of each learner. We teach entrepreneurial thinking and inspire purposeful action. We challenge students to own their learning, care about their communities, and make meaningful impact.

Dual Pathways - A-Levels and HKDSE*

Our curriculum not only prepares students for the frontiers of traditional academic fields but extends into promising emerging ones. Lower secondary students follow the IGCSE subjects like humanities, mathematics, science, and computer science, and then bridge to the IGCSEs and A Levels with a wider range of subjects.

*HKDSE curriculum planning to start in 2025/2026



Experience the Future of Work

Bloom's signature STEM and 21st century studio program allows students to visit state-of-the-art companies such as InnoX Academy and connect with research institutes from China like ShenZhen University and TsingHua University as well as the West like Harvard and MIT. Students get to see the latest trends and learn and work with industry experts.



Build a Startup Fashion Company

Students will formulate to go-to-market strategy with one-on-one coaching with industry experts. This year, our G7 group visited the Esquel Group Manufacturing Factory and partnered with Determinant for a sustainable t-shirt sales event. The factory tour provided insights into textile sustainability, and the sales event allowed us to promote eco-friendly fashion.



OPEN DAY

Date: 5th October, 2024

Time: 12pm - 5pm

Address: 15 Tong Yam Street, Tai Hang Tung



Explore the endless possibilities here at Bloom, from an exhilarating entrepreneurship workshop, to a mesmerizing robotics showcase. Don't miss the chance to immerse in our state-of-the-art campus during a guided tour!



Elevating the curricula of STEM to STREAM



STEM (science, technology, engineering, and mathematics) education has rapidly expanded over the past decade as nations worldwide recognize the need to cultivate skills for the jobs of tomorrow. But Christian Alliance P.C. Lau Memorial International School (CAPCL) has taken it a step further with its introduction of STREAM.

Dr. Cora Hui, Head of School at CAPCL, and Vicky Wong, STREAM coordinator at CAPCL, share insights into their pioneering STREAM program and vision for 21st-century learning.

Under a co-homeroom system practiced at CAPCL, where a classroom is led by a Western and a Chinese teacher, project-based learning seamlessly blends STREAM concepts across subject areas based on the Canada Alberta Curriculum framework. "CAPCL's ambition is to lead in developing well-rounded global citizens through expanding our model to STREAM – adding the new elements of research ('R') and art ('A') to STEM," Dr. Hui explains.

In striving to provide future-focused learning opportunities for their students, CAPCL has launched a new STREAM room called the WOW (Work of Wonder) Workshop, along with the current CA Makerspace.

Dr. Hui explains how STEM education has risen globally in response to the needs of an evolving job market that demands competencies like creativity, collaboration, and problem-solving. "Multi-disciplinary learning engages children and teaches them to apply knowledge in a flexible, relevant way. This is the way forward to get our students ready for the future," she says.

In addition to the school's The Treehouse Library's excellent e-book and print collections that nurture students' research and reading skills, the two STREAM rooms aim to provide "an even more hands-on, collaborative and tech-enabled learning environment conducive to unleashing creativity," Wong says.



"Flexible furniture and a fully-equipped makerspace encourage collaboration and open-ended exploration across different disciplines," Wong elaborates. "Interactive technologies and tools like a 3D printer, an interactive TV, tablets and electronic software are of immense help in stimulating student creativity through multiple options and creative preferences."

While students take ownership of their learning by conducting research and investigations in the STREAM rooms, they would also be doing so under the guidance of teachers, which helps deepen children's understanding and build higher-order thinking skills like analytical, critical thinking and refining methods.

Wong cites the example of a project on indigenous shelters conducted by upper primary students. For starters, they spent time in the WOW Workshop researching and analyzing useful resources and information to include in their projects. They sat in groups and discussed how they wanted to construct and build their shelters, listing out the materials to include and collect. Then, they moved to CA Makerspace to start building the shelters.

"Integrating both of our STREAM rooms doesn't only benefit students' learning, it also provides educators with even more flexibility to create purposeful STREAM projects for children," Wong notes.

CAPCL's inter-disciplinary STREAM approach prepares students exceedingly well for the future, ensuring a seamless transition to secondary education and beyond. "They develop the cross-curricular and innovative mindsets so valued by secondary schools, universities and modern workplaces," says Dr. Hui.

Going forward, Dr. Hui says CAPCL will be placing its priorities on cultivating students' growth mindset and integrating all subjects with a cutting-edge, well-rounded curriculum. With purpose-built facilities and a visionary faculty, the school is poised to achieve this mission.



Christian Alliance P.C. Lau Memorial International School

2 Fu Ning Street, Kowloon, Hong Kong

Tel: 2713 3733

Email: info@capcl.edu.hk

Website: www.capcl.edu.hk



Christian Alliance P.C. Lau Memorial International School
宣道會劉平齋紀念國際學校



Learn and Grow in God's Love Serve and Flourish in God's Grace



Rejuvenated school campus
new school campus, same Christian ethos



Canadian curriculum
Alberta English-Chinese bilingual program



Christian ethos
cultivate students' character development and servant leadership



Small learning community
develop an engaging learning journey

Apply Now for 2025-2026

✉ admissions@capcl.edu.hk ☎ (852) 2950 6326

🌐 www.capcl.edu.hk



Chat With Us



Follow Us



ESF - A WORLD CLASS INTERNATIONAL EDUCATION FOR YOUR CHILD

You can apply for any one of the ESF schools in Hong Kong



The English Schools Foundation (ESF) is the largest English-medium international school organisation in Hong Kong. Our 22 schools and comprehensive programme of extra-curricular activities bring out the best in every student through a personalised approach to learning and by inspiring curious minds.

There are over 18,000 students from 75 different nationalities in ESF kindergartens, primary, secondary and all-through schools. ESF is proud of the high academic and wider achievements of our students. In 2024, we have a 97.6% pass rate in the IB Diploma exams and 23 ESF students achieved the perfect score of 45 points in the IB DP exams.

Why Choose ESF?

• Outstanding Education

We know that, first and foremost, we are here to help your child have the best education possible. Our results speak for themselves. The education that your child will receive at every stage of their journey, from K1 to Y13, will be designed to help them discover their passions.

• Outstanding Experiences

From incredible opportunities in sports, the arts and leadership, we work hard to make sure that your child is happy, kind, and always learning.

• Outstanding People

The biggest impact on your child's education comes from their teachers. We have the world's best in our schools, led by exceptional Principals.



Join ESF for the academic year 2025/26

ESF has removed all of our zoning restrictions. No matter where you live in Hong Kong, you are free to apply for any one of the ESF schools. Our kindergartens, primary, secondary and all-through schools are all world-class. You are free to choose whichever one of these amazing places of learning that best suits your individual circumstances.

ESF also offers Kindergarten Debentures or Nomination Rights Schemes for parents who wish to gain interview priority. Secure your child's future today!



Our 22 ESF schools across Hong Kong



English Schools Foundation

Tel: 3762 2411

Email: kindergarten.admissions@esfcentre.edu.hk /
primary.admissions@esfcentre.edu.hk /
secondary.admissions@esfcentre.edu.hk

Website: www.join-us.esf.edu.hk



A World Class Education from K1 to Y13

At ESF, our 22 schools share the same vision —
For every student to be the best they can be.

At ESF, we help our students achieve the extraordinary. We do this by holding on to a single truth: that every student is unique, that every child has their own talents, their own skills and their own passions. With our vast resources, wonderful teachers and network of 22 schools, we are able to provide a truly exceptional learning experience.

For parents who are looking to have their child join ESF in 2025/26, applications for K1 (born 2022), Year 1 (born 2020) & Year 7 (born 2014), will be open from 1 to 30 September 2024. Don't miss it!

Parents who wish to gain interview priority may apply for ESF's **Kindergarten Debentures** or **Nomination Rights Schemes**.

Central Application for
2025/26
K1 | YEAR 1 | YEAR 7
1-30 SEP 2024



Outstanding Education



Outstanding Experiences



Outstanding People



Chat With Us



Apply Now



Feel the Wonder of Play at Fairchild



At Fairchild, we promote the wonder of play through providing authentic learning experiences for children. We believe that childhood is a journey, and through cultivating curiosity, creativity and confidence, children can be independent and truly express themselves through numerous different learning engagements.

Our Reggio Emilia inspired philosophy allows children to learn through play, whilst having fun! You may often be surprised at how children love to play with the simplest of materials such as cardboard boxes or paper tubes rather than the contents of a box housing a new toy. Children naturally gravitate towards objects which pique their interest and curiosity. Loose parts are interesting resources which children can move, manipulate, control and change as they play. Objects such as bottle tops, small rocks, wooden pegs, corks, old keys, pine cones can allow children to lay out and coordinate the items to create something new, allowing children to imagine a new character, or a different ingredient for a recipe. They can also engage in different

conversations and interactions with friends, encouraging their communication, collaboration and cooperation.

The school and classroom environments also offer many ways for children to engage in different variable items, such as gravity, sound, chemical reactions, concepts, words and people, all of which can also be considered as loose parts. When a setting is rich in various loose parts, children have numerous ways to make changes, allowing them to think differently, process information for themselves and play with materials in an open ended manner.

Natural items such as the branch of a tree can become a fishing rod, a stick for stirring, a utensil to stir fry some vegetables, or even a magic wand! Through children's active engagement, they are self motivated to play and learn, and have the choice over what they play with and how they play with them. There is no prescribed way for children to use loose parts, the more random combinations, the better. As children develop their critical thinking, they investigate materials on offer, formulate their own theories on the items and ask questions as they challenge their own assumptions on the resources on offer. There are limitless opportunities for problem solving using interesting things - consider how many uses children might have for an empty cardboard box, and just feel the wonder!



Fairchild Kindergarten

Address: G/F & 1/F Kong Chian Tower, Block 1, 351 Des Voeux Road West, Sai Ying Pun
Tel: 2803 2638
WhatsApp: 9178 1722

Fairchild Junior Academy

Address: 22/F, Park Commercial Centre, 180 Tung Lo Wan Road, Tin Hau
Tel: 2898 1611
WhatsApp: 9276 8596



OPEN FOR ADMISSIONS

📍 Tin Hau 📍 Sai Ying Pun
English/Bilingual Kindergarten & Playgroup

Fairchild is, in the words of one of our children, *'that perfect place'* where children come to school every day with a big smile.

Ms. Betty Yau, Principal



CREATIVITY

CURIOSITY

CONFIDENCE

School Placement 升學情報

ESF 英基 CDNIS 加拿大國際學校 FIS 法國國際學校
Kiangsu & Chekiang International Section 蘇浙公學國際部
CIS 漢基國際學校 Harbour School 港灣學校 ISF 弘立
Kau Yan 救恩 HKIS 香港國際學校 and more 更多優質學校

Places in PN & K1 classes are very limited. Contact us to book a school tour.

Fairchild Junior Academy 📍 Tin Hau 📞 2898 1611 🏠 www.fairchild.academy
Fairchild Kindergarten 📍 Sai Ying Pun 📞 2803 2638 📱 fairchild_hongkong





Unlock Your Child's Potential for Success with a Singapore-Inspired Education



Our School

Celebrate with us as Invictus School Hong Kong approaches its fifth academic year since establishment, continuing to uphold its commitment to providing high-quality and accessible education. At Invictus, we strive to foster individuals in innovative and inspiring ways, nurturing them to become lifelong learners who contribute positively to society. Our modern Tseung Kwan O campus houses the Kindergarten and Primary years (Nursery to Year 6, ages 3 to 11), offering a bilingual program in English and Mandarin Chinese. For students in Years 7 to 13 (ages 11 to 18), our Secondary School campus in Chai Wan delivers the prestigious Cambridge curriculum, including IGCSEs and A-Levels.

Our Mission

"Our mission at Invictus is to nurture our students to be future-ready and enable them to skillfully navigate the Volatile, Uncertain, Complex and Ambiguous (VUCA) world that we live in today," says Julia Woo, Head of Schools. "To this end, strong instructional and curriculum leadership and sound assessment is key to empower students to not only thrive in the classroom, but also skillfully navigate an uncertain and changing world today." Beyond equipping students with the skills, knowledge and competence to enable them to succeed, Invictus students will also be anchored in values such as discipline, integrity, resilience and kindness, so that they will grow to be fine young men and women of good character.

Our Curriculum

Education at Invictus is structured around a challenging curriculum that progresses seamlessly from Kindergarten to Secondary years. Beginning with the International Early

Years Curriculum (IEYC) in Kindergarten, incorporating the Singapore Mathematics program and bilingual learning, our students transition to the Primary section where they build on these foundations. The Cambridge Primary Curriculum provides an international framework, with a continued emphasis on Singapore Mathematics and bilingual education, gradually shifting focus to English during the Primary years. In Secondary, students explore a core foundation of subjects in Years 7 to 9, followed by the Cambridge IGCSE program in Years 10 and 11, offering flexibility in subject choices and personal strengths. The final step of the Invictus journey is the AS and A-Level programs in Years 12 and 13. These Cambridge qualifications are world-renowned, unlocking pathways to top-tier universities worldwide.

Our Value-Proposition

Invictus School Hong Kong is a through school, where a child who joins Invictus at the Kindergarten or Primary levels, is guaranteed a place in the Primary and Secondary sections. The initial application for any year level is made online. We welcome both local and international families with affordable international school fees and provide support to facilitate the smooth integration of students from diverse educational backgrounds.



Connect With Us

Prospective parents and students eager to learn more about Invictus are encouraged to visit the school and engage with our admissions team. Experience our campus through tours, or a one-day taster class for a glimpse of the Secondary School environment before enrollment. Contact our admissions team to secure your spot and begin your journey with Invictus.

Invictus School Hong Kong

Tseung Kwan O Campus (Kindergarten & Primary)

Monterey Place, 23 Tong Chun Street, Tseung Kwan O

Tel: (852) 3643 1868

Email: admissions@invictus.edu.hk

Website: www.invictus.edu.hk/tko

Chai Wan Campus (Secondary)

188 Tai Tam Road, Chai Wan

Tel: (852) 3852 7201

Email: admissions.chaiwan@invictus.edu.hk

Website: www.invictus.edu.hk/chaiwan



INVICTUS
SCHOOL HONG KONG
茵維特(香港)學校

UNLOCK YOUR CHILD'S POTENTIAL FOR SUCCESS WITH A SINGAPORE-INSPIRED EDUCATION



WHY INVICTUS?



Accessible Quality Education



International Recognised Curriculum



Highly Qualified Teachers



Singapore-inspired Education



Supportive Learning Environment



Seamless Transfer To Overseas Invictus Schools

Affordable Fees

- ▶ Kindergarten **HKD 111,400**
- ▶ Primary **HKD 114,700**
- ▶ Secondary **HKD 135,000 – 137,600**

Find out more about us

Tseung Kwan O Campus (Kindergarten & Primary)

23 Tong Chun Street, Tseung Kwan O

tko@invictus.edu.hk

+852 3643 1868

www.invictus.edu.hk/tko

Chai Wan Campus (Secondary)

188 Tai Tam Road, Chai Wan

chaiwan@invictus.edu.hk

+852 3852 7201

www.invictus.edu.hk/chaiwan

School Tour



Apply Now



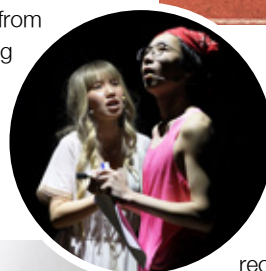


All Through School - UK Curriculum - Academic Excellence Since 1994



Korean International School (KIS) has been successfully running for 30 years in Hong Kong, providing students with an excellent standard of education and a well-rounded learning experience.

Since its establishment in 1994, KIS has been committed to providing a first-class education to students from diverse backgrounds. The school has a strong reputation for academic excellence, with students consistently achieving outstanding results in external exams such as the International General Certificate of Secondary Education (IGCSE) and Cambridge International AS & A Levels.



One of the unique aspects of KIS is its commitment to bilingual education. The school offers a Korean, Chinese and Spanish language program for students, as well as Chinese language classes for those who wish to study Mandarin or Cantonese. This approach allows students to develop their language skills and cultural understanding, which is essential in today's globalised world.



The school's facilities with modern classrooms, science labs, a library, an art studio, a performing arts center, and many port facilities. The school's campus is located in the Sai Wan Ho area of Hong Kong, providing a peaceful and conducive environment for learning. We recognise the importance of extracurricular activities in a student's overall development and offer a wide range of extracurricular activities, including sports, music, drama, and community service. The school's diverse student body allows for a rich cultural exchange and provides students with a global perspective.

KIS is committed to providing a safe and inclusive learning environment for all students. The school's policies and practices are designed to promote diversity, respect, and understanding, and to ensure that all students feel valued and supported.



KIS prides itself on providing a student-focused education that values individuality, creativity, and critical thinking. The school's dedicated faculty is composed of experienced and highly qualified teachers who are committed to providing a supportive and nurturing learning environment for all students.

Korean International School
 55 Lei King Road, Sai Wan Ho, Hong Kong
Tel: 2569 5500
Email: enquiry@kis.edu.hk
Website: www.kis.edu.hk



SAI WAN HO CAMPUS
 5 minute walk from the MTR station
 #WEAREKIS

UK CURRICULUM ACADEMIC EXCELLENCE SINCE 1994 ALL THROUGH SCHOOL | RECEPTION TO YEAR 13 | AGES 4-18

- Academic Excellence
- International Environment
- Innovative Teaching Methods
- Extra-Curricular Activities
- Supportive Learning Environment
- Competitive Tuition Fees

NO CAPITAL LEVY OR COMPULSORY DEBENTURES



KOREAN INTERNATIONAL SCHOOL
find **PASSION** foster **VISION** encourage **ACTION**

ADMISSIONS APPLY NOW
 Annual Tuition Fees 24-25
 Reception: HK\$ 93,400
 Primary: HK\$ 118,100
 Secondary: HK\$ 131,700

ADMISSIONS FEE WAIVED FOR RECEPTION & YEAR 1



Embracing Nature, Nurturing Minds and Engaging our Community: The Spirit of NIS



Norwegian International School (NIS) is a school like no other in Hong Kong. It's a school where you'll find wide open spaces, lush greenery, and students who love to spend time learning both in and out of doors. It's a school where the students, families, and staff truly are a learning community together.

At NIS, both the Primary School and Kindergarten campuses seamlessly blend classroom learning with outdoor exploration. The school's unique location in Tai Po provides a rich learning environment where students can observe the world around them in the classroom and then venture outdoors to witness the growth of vegetables they've planted or marvel at the ancient trees that grace the playground.

Learning at NIS is based on the International Primary Curriculum and International Early Years Curriculum. Both are enquiry-based programmes that use creative, thematic units to demonstrate how different subjects relate to each other. NIS School Principal Luis Mak says of these units, "Our students can learn about subjects through different lenses—so, for example, we view the topic from a scientist's perspective, an artist's perspective, and a historian's perspective."



An active, healthy lifestyle is vital to a child's development, and at NIS, it's an essential part of daily life. The primary campus' large outdoor playing field has encouraged students to love to be physically active for the simple enjoyment of it. When the time comes to return to the classroom, NIS students benefit from all the positive effects sunshine and activity have on their developing intellects.

In addition, at NIS, community involvement is not just encouraged; it's celebrated. Parents have ample opportunities to participate in classroom activities, and it's common to see families enjoying quality time together in the school playground long after the school day has ended. As part of Generations Christian Education, NIS also provides parent education opportunities to strengthen families and support learning at home.



NIS offers regular school tours and would be delighted to introduce all interested families to this vibrant, close-knit community.

Norwegian International School

Primary School Campus:

Tel: 2658 0341

Email: office@nis.edu.hk

Address: 170 Kam Shan Road, Tai Po

Kindergarten Campus:

Tel: 2638 0269

Email: kinder@nis.edu.hk

Address: 175 Kwong Fuk Road, Tai Po

Website: NIS.EDU.HK



PRIMARY SCHOOL & KINDERGARTEN



We offer:

- ✓ Rigorous academic programmes
- ✓ Faith-based, holistic education
- ✓ Spacious outdoors
- ✓ Close-knit community



NIS.EDU.HK



Celebrating 30 Years
1994 - 2024



Thinking beyond traditional education to transform learning

You want the best for your child. So do we. Nord Anglia International School Hong Kong (NAISHK) educates your child for the future, enhancing learning through collaborations with the world's best organisations. We teach the most respected and robust educational programmes through collaborations with MIT and The Juilliard School, delivered in some of the best facilities in all of Hong Kong. Our individual approach to each child enables them to achieve outstanding academic results whilst developing the skills and mind-set to thrive in an ever-changing world.

NAISHK offers an all-through education for students aged 3-18, with specialist teachers in Music, Art, PE and Mandarin Chinese from the very start of a child's educational journey with us. Our sole focus is on the success of each and every child. We want them to be the best they can be and we encourage them to "Be Ambitious", reflecting our school's philosophy. This means we support each student to progress further than they thought possible, achieving more academically, personally and socially – all of which are equally important.

At the heart of the school's success and excellent reputation, is the very high quality of teaching and learning delivered by our exceptional staff. Our teachers create an atmosphere of curiosity, passion and enjoyment for learning in all students. We are proud to attract the best specialist teachers who are committed to nurturing and inspiring every child they care for. We support them to do this through world-class professional development, amplified by the sharing of international best practice. Nord Anglia Education (NAE) offers our staff the opportunity to study for a fully-funded Master's degree from King's College London, underscoring our commitment to the career progression of each teacher. Teachers here teach children, not classes, so the focus is always on the child as an individual. We bring a new approach to the interdisciplinary subjects of STEAM (science, technology, engineering, arts, and mathematics), putting your child at the forefront of developing skills for the 21st century.

With over 40 nationalities represented in our own school, everyone learns to respect others regardless of differences in opinion, religion, race or ethnicity. All major festivals are celebrated and our annual International Day event is a culmination of the recognition that rich diversity is a strength. At NAISHK, every day is an 'international day' as our pupils are part of the greater Nord Anglia Education family, with more than 85 schools in 33 countries, linked by our Global Campus. This allows students to co-operate with each other on projects and learning across the world, making them internationally-minded, effective global citizens of the future.

At NAISHK, we offer the IGCSEs and IB Diploma Programme. This curricula provides the greatest success for the largest number of students. With our individualised approach to each child's learning, outstanding teachers and collaborations, and unique opportunities inside and outside the classroom, we promise to nurture your child to love learning and help them to achieve more than they ever thought possible.

We would love to welcome your family to become a valued member of our vibrant and growing global community. Join Nord Anglia International School Hong Kong today and give your child the very best education.

Apply now!

Nord Anglia International School Hong Kong

Early Years Campus

285 Hong Kin Road, Tui Min Hoi, Sai Kung, New Territories

Primary Campus

11 On Tin Street, Lam Tin, Kowloon

Secondary Campus

19 Yuet Wah Street, Kwun Tong, Kowloon

Tel: (852) 3958 1428

Email: admissions@nais.hk

Website: www.nais.hk



CREATE YOUR FUTURE

At NAIS Hong Kong, we'll help your child develop the knowledge, creativity and resilience they'll need to succeed - whatever they choose to be or do in life.

Find out how your child can make their mark on the world and how we'll make every moment of their education count.

NAIS.hk





Secure Admissions to World-Class Universities with Ontario eSchool



Ontario eSchool - a certified high school accredited by the prestigious Ontario Ministry of Education (BSID#882694). As a beacon of academic excellence, Ontario eSchool is empowered to grant the coveted Ontario Secondary School Diploma (OSSD), a passport to educational and professional success worldwide.

Rooted in Proven Excellence

Ontario eSchool's curriculum is a tapestry of internationally recognized credit courses, woven together by a team of highly qualified Ontario Certified Teachers (OCT). With decades of collective experience, our educators are masters of their craft, committed to igniting the intellectual curiosity of each student who walks through our doors.



Embracing the Future of Learning

Leveraging the power of technology, Ontario eSchool offers a revolutionary online learning experience that transcends geographical boundaries. Through real-time live teaching sessions, our students immerse themselves in a

personalized and engaging environment, where they can tailor their education to their unique interests and aspirations.

Holistic Evaluation for Holistic Growth

At Ontario eSchool, we believe that true academic success is more than just a number. Our comprehensive assessment system combines 70% coursework and 30% internal exams, providing students with regular feedback and the opportunity to refine their skills continuously. This holistic approach ensures our graduates not only excel academically, but also develop the critical thinking and problem-solving abilities that are essential for thriving in the 21st century.

Pathways to Global Opportunities

The Ontario Secondary School Diploma (OSSD) earned at Ontario eSchool is a key that unlocks a world of possibilities. Recognized by universities worldwide, this distinguished credential paves the way for our students to pursue their educational dreams, whether in Canada or on the global stage. Our dedicated education counselors further empower our graduates by offering unparalleled university preparation and guidance, navigating the intricacies of course selection, university applications, and scholarship opportunities.

At Ontario eSchool, we are more than just an educational institution - we are a gateway to a future filled with boundless opportunities. Join us on this transformative journey and unlock your true potential. Contact us today to take the first step towards a world-class education and a lifetime of success.



Ontario eSchool

1/F & 4/F Tower, 6 Bowring St, Jordan
Tel: 2393 8321/ 2393 8312
Email: info@oesasia.org
Website: www.oesasia.org



Ontario eSchool
加拿大安省網上中學





Call for
Consultation
Today!



Rooted in Proven Excellence Ontario Secondary School Diploma (OSSD) Program

The Ontario High School Diploma (OSSD) is a world-renowned system of non-tested centered high school education. With its excellent teaching quality and strict academic standards, universities recognize it around the world. The same level of recognition and competitive advantage as other international diplomas like IB, A-level, AP & DSE. Exam results had the same competitive advantage when applying to colleges and universities around the world.

100% University Admission: Transferable Credits for Grade 9-12 DSE, IB and AP students

 Online program with live Ontario certified teachers (OCT)	 Small class ratio (Max.: 6)
 World Recognized credit courses Grade 9-12	 No public exams 70% assignments + 30% internal exams





Salesian School Future Education : OECD 2030 Learning Compass & U.F.O. Curriculum

Salesian Highlights:

Salesian School "Future Education" pioneers an unprecedented school-centric educational framework to:



- 1) Equip learners with Future-oriented Transformative Competencies
- 2) Unleash students' potential through Experiential Learning & Multiple Intelligences
- 3) Nurture children's all-round Well-being

Salesian Background & Achievements



With 70+ years of foundation, Salesian School is a well-known local subsidized primary school. Featuring as one of St. Don Bosco Schools, our school adopts "Preventive System" i.e. Reason, Religion and Loving-Kindness. Our

outstanding alumni: Prof. Tony Chan (former President of HKUST), Arron Kwok (All-around artist) and Walter Kwok JP (former CEO of Sun Hung Kai Properties).

Salesian U.F.O. Curriculum

70th U.F.O. Curriculum, i.e. Unique (U) , Friendly (F) , Optimistic (O), is tailor-made for Salesian students. We believe : Every child is Unique (U) and exceptional in their own way. Our school strives to unleash their potential. Learning in a nurturing and loving environment, students blossom into Friendly (F) and appreciative individuals. Salesian learners, equipped with a future-oriented mindset, demonstrate an Optimistic (O) outlook towards the future.



Salesian Future Education

Adopting OECD 2030 Learning Compass Education Framework, Salesian School "Future Education" visualizes students' future needs and prepares children with knowledge, skills, values and attitudes via three aspects: Future Learning, Future Experience and Future Well-being.



Future Learning : Project-based Learning (PBL) , Theme-based Learning , Authentic assessment for learning and Multifaceted U.F.O. student portfolio

Future Experience : Multiple Intelligences (MI) , Potential Realization Program (PRP), Experiential Learning and Life Planning

Future Well-being : 1.) Physical health (Morning workout, Featured P.E. lessons, Various school teams), 2.) Mental health (Positive thinking, U.F.O. award scheme) , 3.) Cognitive health (Bridging course, Small-class teaching, Assistant Teacher in P.1) , 4.) Social health (Buddy scheme) and 5.) Spiritual health (School-wide daily prayers, class-based intercession bottle)



Salesian School

16 Chai Wan Road, Shau Kei Wan, Hong Kong

Tel: 2885 0032

Email: mail@salesian.edu.hk

Website: salesian.edu.hk



SALESIAN SCHOOL 慈幼學校

UNIQUE • FRIENDLY • OPTIMISTIC



Visit Salesian School
Open Day on 14/9 (Sat)

國際創科奧林匹克編程比賽

「幼兒編程」 Coding

matatalab



- ### Salesian Highlights:
- ✓ Over 70 Years of Foundation
 - ✓ U.F.O. Curriculum
 - ✓ Future Learning (Student Agency)
 - ✓ Future Experience (Experiential)
 - ✓ Future Well-being (All-rounded)
 - ✓ Small Class Teaching
 - ✓ Internationalized Timetable
 - ✓ Multiple-Intelligences Unleashed
 - ✓ Subsidized School: No School fee
 - ✓ Open for Application

Salesian
School
Open
Day



Apply
for
Free



One School: Two Pathways



Inspired by over 470 years of Shrewsbury heritage, Shrewsbury International School Hong Kong was set up in recognition of the influence childhood experiences have upon adult lives. The only premium provider of primary education in the region, Shrewsbury offers a unique and uncompromised range of opportunities for children between the ages of 3 and 11.

“Childhood experiences have been shown to have a profound impact upon our happiness, success and contentment. The quality of our adult life is often derived from the quality of our formative years and early schooling. Learning at Shrewsbury is centred upon the provision of a unique and aspirational set of experiences and opportunities to young people. Working in partnership with parents, we support the development of social and leadership skills, perseverance and determination.” Ben Keeling, Shrewsbury Principal

Shrewsbury International School Hong Kong offers two bespoke study pathways underpinned by the academic rigour of the Early Years and Foundation Stage framework and the English National Curriculum. At the heart of the British International Pathway (BIP) lies a broad and holistic curriculum that supports the development of native or near-native level



English and international standard Chinese. At the heart of the Hanqing Bilingual Pathway (HQP) lies a culturally rich curriculum that supports the development of native or near-native level Chinese and international standard English. Both options support fluid entry into secondary schools of first choice both within and beyond Hong Kong.

Learning at Shrewsbury is founded upon a thematic programme that encourages subject interconnection. As a result, students develop their ability to think both creatively and critically within a safe, nurturing and inspiring space, designed for and exclusively used by young learners.

Weekly aquatics lessons supplement an ambitious physical education and performing arts programme facilitated by the availability of an incredible range of exceptional spaces, while a three-tiered Chinese language programme ensures that children of all ages and abilities develop confidence and practical fluency.

“Shrewsbury students love school - they engage boldly and with confidence, empowered by their continually developing linguistic skills. The close and trusting relationships we share act to guide personalised exploration and stir deep fascination.” Lissie Rowe, Early Years Leader

Parents keen to learn more about what makes Shrewsbury sparkle are encouraged to reach out direct via their admissions team.

“You only get one childhood and the experiences on offer at Shrewsbury have a life-defining influence. We provide each of our students with the attributes to thrive both beyond their primary years and into early adulthood.” Ben Keeling, Principal



Shrewsbury International School Hong Kong

10 Shek Kok Road, Tseung Kwan O

Tel: 2480 1500

WhatsApp: 5997 8356

Email: admissions@shrewsbury.edu.hk

Website: www.shrewsbury.edu.hk



ONE SCHOOL: TWO PATHWAYS

RSVP



Shrewsbury International School Hong Kong offers two bespoke study pathways underpinned by the academic rigour of the Early Years and Foundation Stage framework and the English National Curriculum. At the heart of the British International Pathway lies a broad and holistic curriculum that supports the development of native or near-native level English and international standard Chinese. At the heart of the Hanqing Bilingual Pathway (汉庆双语课程) lies a culturally rich curriculum that supports the development of native or near-native level Chinese and international standard English. Both options support fluid entry into secondary schools of first choice both within and beyond Hong Kong.

Join us on a campus tour to learn more about the unique distinctions of a Shrewsbury education.





A Small School With a Big Heart



YMCA Christian Academy (YCA) is a unique community-oriented private primary school on Hong Kong Island offering a vibrant, future-ready curriculum. "We are blessed with a connected community, amazing parents and student body. The majority of our new students join YCA through parent referrals" says Geoff Blaik, Principal. Accredited by the Council of International Schools (CIS), it represents our high standards in our international education and commitment to continuous improvements in providing children with an outstanding and future-focused education.

Following the International Primary Curriculum (IPC) and UK National Curriculum, we provide a broad and balanced curriculum where students are empowered to identify and follow their passions and interests. Students learn how to be agents, taking ownership of their learning and development, maintaining a curious and reflective posture. We focus on the development of the whole child so that every student will grow and thrive academically, physically, spiritually, and socially. For this to happen, we maintain a nurturing learning environment and offer a range of support for students' wellbeing and pastoral care.



Wellbeing Curriculum & Pastoral Care Matters

We offer a holistic, child-centred approach. We use the best of both the Jigsaw PSHE programme (UK) and Positive Education Enhanced Curriculum (Australia) to help students develop the knowledge, skills, and attributes they need to thrive as an individual, a family member, and as part of the wider community. "Children who can understand and manage their emotions are more likely to express themselves calmly and in an appropriate way," says Mr. Blaik. Wellbeing-focused teaching aims to help students understand themselves as learners and to develop self-awareness and personal, social and emotional skills. Our students are able to identify their emotions and use strategies to help them regulate and solve problems together.

Importance of a Growth Mindset

We foster a growth mindset in our school - a positive mindset is a superpower! We help students understand that well-directed effort moves them closer to their goals. Students learn to reflect, listen to feedback, and improve on their next try. They learn that challenges are opportunities to grow and improve, and failures are just stepping stones in the learning process.

To help our students gain a rich and diverse experience, we offer over 20 different after school programmes for students to explore and develop new hobbies and interests. Every year at our Talent Show, our students confidently perform their dance routines, singing, instrument playing, magic tricks, kung fu, and gymnastics to name a few.



Connect with Us

YCA is currently accepting applications for 2025-26 academic year for Year 1 to Year 6. We would like to invite you to come see the school in action at our upcoming Open Day on 28 September 2024. You will meet our student ambassadors, Senior Leadership Team and teachers, and experience why YCA is such a unique school for children to prosper.

YMCA Christian Academy

70 Bridges Street, Sheung Wan
Tel: 2537 2552
Email: admission@yca.edu.hk
Website: yca.edu.hk



Sign Up Now for YCA's upcoming event

We are a unique community-oriented and nurturing Christian primary school with a vibrant and future-ready international curriculum.

- Small class size
- Inquiry-based learning
- Differentiated learning
- Daily Chinese classes
- SEN and EAL support

Open Day 28 Sep 2024

- 10:00am - 11:30am
- 12:00pm - 1:30pm
- 2:00pm - 3:30pm

Join us for our annual Open Day. Children can join our teacher-led workshop while parents join our information session. We'll finish the event with a school tour led by our Principal and Vice-Principal.



APPLY NOW
for Year 1 - Year 6



*Please note that one ticket per family.

70 Bridges Street, Sheung Wan | yca.edu.hk | admission@yca.edu.hk



ABC Pathways International Kindergarten

Tai Koo Campus
G/F, Block 8&9, Kornhill Garden,
1124 King's Road, Quarry Bay
Tel: 2110 1211
Email: enquiry.tk@ABCpathways.edu.hk

Whampoa Campus
Shop LG01, 01A & 01B on LG/F, and
UG45A-C on UG/F, The Laguna Mall,
8 Laguna Verde Avenue, Hung Hom
Tel: 2110 9993
Email: enquiry.wp@ABCpathways.edu.hk
Website: abcpathways.edu.hk
Year founded: 2014
Curriculum: International

American International School

125 Waterloo Road, Kowloon Tong, Hong Kong
Tel: 2336 3812
Email: admissions@ais.edu.hk
Website: www.ais.edu.hk
Year founded: 1986
Curriculum: US Common Core State Standards
and AP Courses

American School Hong Kong

6 Ma Chung Road, Tai Po, N.T.
Tel: 3919 4111
Email: admissions@ashk.edu.hk
Website: www.ashk.edu.hk
Year founded: 2016
Curriculum: US, IB



Anchors Academy (Primary School) Anchors Academy Affiliated International Kindergarten cum Nursery

1 Ko Po Path, Yuen Long, Kam Tin North,
Yuen Long, New Territories
Primary
Tel: 3860 5605
Email: AAPSinfo@anchorsacademy.edu.hk
Kindergarten cum Nursery
Tel: 3860 5655
Email: AAKGinfo@anchorsacademy.edu.hk
Website: www.anchorsacademy.edu.hk
Year Founded: 2023



Anfield School (Primary), Tai Wai

No.1, Lung Pak Street, Tai Wai, Statin, N.T.
Tel: 2692 8823
Email: enquiry@anfield.edu.hk

Anfield International Kindergarten and Nursery, Whampoa

Level 2, Phase 1, 8 Laguna Verde Ave, Hung Hom.
Tel: 2766 3882
Email: enquiry@anfield.edu.hk

Anfield International Kindergarten, Kowloon Tong

5 Cumberland Road, Kowloon Tong, Hong Kong
Tel: 2794 3668
Email: enquiry@anfield.edu.hk

Anfield St. Bosco Koon Ying School, Yuen Long

St. Bosco Koon Ying School Castle Peak Road, Mai
Po, Yuen Long
Tel: 3582 8298
Email: enquiry@anfield.edu.hk
Year founded: 1999



Austin School

Austin Tower, 152 Austin Road, Tsim Sha Tsui,
Kowloon, Hong Kong
Tel: (852) 2711 1136
Email: admissions@austinschool.edu.hk
Website: www.austinschool.edu.hk

Australian International School Hong Kong

3A Norfolk Road, Kowloon Tong
Tel: 2304 6078
Email: info@aishk.edu.hk
Website: www.aishk.edu.hk
Year founded: 1995
Curriculum: Australian National Curriculum, IBDP

Baumhaus Wan Chai

1/F Kar Yau Building,
36-44 Queen's Road East, Wan Chai
Tel: 2321 5898
Website: www.baumhaus.com.hk

Bloom KKCA Academy

7 Pui Tak Street, Shek Kip Mei
Tel: 2311 2268
Email: admissions@bloom.edu.hk
Website: www.bloom.edu.hk

Saint Too Bloom Academy

15 Tong Yam Street, Tai Hang Tung
Tel: 2216 5200
Email: admission@bloom.edu.hk
Website: www.secondary.bloom.edu.hk



Blooming Buds Preschool

Unit 7, 1/F, Island Crest, 8 First Street,
Sai Ying Pun, Hong Kong
Tel: 2887 9921
Email: enquiry@bloomingbuds.com.hk
Website: www.bloomingbuds.com.hk
Year founded: 2012
Curriculum: Reggio Emilia Approach and
the Creative Curriculum

Box Hill (HK) International Kindergarten & Pre-school

Ma On Shan Campus
G/F, Tower 10, Phase 1, Vista Paradiso,
No. 2 Hang Ming Street, Ma On Shan
Tel: 2750 6323
Email: mos@boxhill.edu.hk
Fo Tan Campus
No. 327 on Podium of Jubilee Square,
2-18 Lok King Street, Fo Tan, New Territories
Tel: 2688 2161
Email: ft@boxhill.edu.hk
Tseung Kwan O Campus
Shop 2 & 3, Level G/F & 1/F, Mount Verdant,
48 Chui Ling Road, Tseung Kwan O, New Territories
Tel: 2623 0023
Email: tko@boxhill.edu.hk
Website: www.boxhill.edu.hk
Year founded: 2004
Curriculum: Early Years Foundation Stage

Brightland International Kindergarten

Shop 1, Wing A, Block A, Tak Nga Court,
2 Hiu Wan Road, Tai Po
Tel: 2651 3311
Email: info@brightland.edu.hk
Website: brightland.edu.hk
Year Founded: 2016

PIONEERS OF THE
STORYTELLING IMAGE

venture
studios

CREATING MEMORIES



CALL NOW! 2885 6262

LONDON • HONG KONG • NEW YORK



Find us on:
facebook



Venture Studios Hong Kong



venturestudioshk



Venturephotography.com/hk



+852 5304 7363

Canadian International School of Hong Kong

Aberdeen Campus
36 Nam Long Shan Road, Aberdeen
The Southside Campus
Shop Units G21-24, G/F, THE SOUTHSIDE,
11 Heung Yip Road, Wong Chuk Hang, Hong Kong
Tel: 2525 7088
Email: schoolinfo@cdnis.edu.hk
Website: www.cdnis.edu.hk
Year founded: 1991
Curriculum: IB and OSSD

California School

3/F, Front Block, Lung Ma Building,
550 Nathan Road, Yau Ma Tei
Tel: 2388 9844 / 9822 7549
Email: info@californiaschool.edu.hk
Website: www.californiaschool.edu.hk
Year founded: 1992
Curriculum: IGCSE, A-Levels

Cannan Kindergarten (Whampoa Garden)

Portion of G/F, Commercial Podium,
Site 10, Whampoa Garden, Hung Hom
Tel: 2330 3336
Website: www.cannan.edu.hk
Year Founded: 1997

Carmel School Hong Kong

Elsa High School Campus
460 Shau Kei Wan Road, Shau Kei Wan, Hong Kong
Tel: 3665 5388
Carmel Elementary Campus
10 Borrett Road, Mid-Levels, Hong Kong
Tel: 2964 1600
Holly Rofé Early Learning Centre
70 Robinson Road, Mid-Levels, Hong Kong
Tel: 2249 7600
Email: admissions@carmel.edu.hk
Website: www.carmel.edu.hk
Year founded: 1991

Cherish English School & Kindergarten

Shop KG01, G/F & M/F, Sai Wan Estate,
East Terrace, Kennedy Town
Tel: 2855 0080
Website: www.cherish.edu.hk
Year Founded: 1988

Chinese Academy

77 Caroline Hill Road, Causeway Bay, Hong Kong
Tel: 2499 8000
Email: enquiry@caps.edu.hk
Website: www.caps.edu.hk
Year founded: 2017
Curriculum: Primary: Bilingual Immersion in English & Chinese (Putonghua);
Secondary: IB MYP, IB DP

Chinese International School

1 Hau Yuen Path, Braemar Hill, North Point
Tel: 2510 7288
Email: cis_info@cis.edu.hk
Website: www.cis.edu.hk
Year founded: 1983
Curriculum: **Primary:** balanced and integrated dual language curriculum in both English and Chinese; **Secondary:** IBMYP & IBDP. In Year 10, students study the IB MYP in our satellite campus in Hangzhou (CIS Hangzhou)

Christian Alliance International School

33 King Lam Street, Lai Chi Kok, Kowloon
Tel: 3699 3862 / 3699 3863 / 3699 3865
Email: admissions@caisbv.edu.hk
Website: www.caisbv.edu.hk
Facebook: @cais.hk
Instagram: @caisbv



Christian Alliance P.C. Lau Memorial International School

2 Fu Ning Street, Kowloon, Hong Kong
Tel: 2713 3733
Email: info@capcl.edu.hk
Website: www.capcl.edu.hk
Curriculum: Canada's Alberta Curriculum



Concordia International School

68 Begonia Road, Yau Yat Chuen
Tel: 2789 9890
Email: office@concordiaintl.edu.hk
Website: www.cihs.edu.hk
Year founded: 1990
Curriculum: North American

Creative Kindergarten

G/F, 6 Rutland Quadrant, Kowloon Tong
Tel: 2336 1139
Website: www.creative.edu.hk
Year Founded: 1984

Creative School Continuum

Creative Primary School's Kindergarten,
Creative Primary School
2A Oxford Road, Kowloon Tong, Kowloon, HK
Tel: 2336 1212 / 2336 0266
Email: cps@creativeprsch.edu.hk
Website: www.creativeprsch.edu.hk
Creative Secondary School
3 Pung Loi Road, Tseung Kwan O, Sai Kung
Tel: 2336 0233
Email: admin@css.edu.hk
Website: www.ccs.edu.hk
Year founded: 2006
Curriculum: HKDSE, IBMYP, IBDP

Dalton School Hong Kong

1/F & 2/F, Imperial Cullinan,
10 Hoi Fai Road, Kowloon
Tel: 3612 4660
Email: info@dshk.edu.hk
Website: www.dshk.edu.hk
Year founded: 2017
Curriculum: US Common Core Standards Tsinghua Chinese

David Exodus Kindergarten

Upper Ground Podium, Block 4,
Julimount Garden, Tai Wai, Shatin, N.T.
Tel: 2699 0100
Website: www.dek.edu.hk
Year founded: 1989
Curriculum: Own

Deborah Educational Institute:

Deborah International Pre-school /
Play school (Tseung Kwan O)
Kindergarten Tower, Bauhinia Garden,
11 Tong Chun Street, Tseung Kwan O
Tel: 3403 4393
Curriculum: International
Deborah International Pre-school / Play-school
(Hung Hom)
1/F, Site 2 and G/F, Site 7,
Whampoa Garden, Hung Hom, Kowloon
Tel: 2362 8379 (Site 2) / 2774 1669 (Site 7)
Curriculum: International / Japanese International

Delia Memorial School (Glee Path)

1-3 Glee Path, Mei Foo Sun Chuen, Kowloon
Tel: 2741 5239
Email: gp@deliagroup.edu.hk
Website: www.deliagp.edu.hk
Curriculum: HKDSE, IBDP

DSC International School

5-7, Tai Fung Avenue, Taikoo Shing
Tel: 3658 0400
Email: admissions@dsc.edu.hk
Website: www.dsc.edu.hk
Year founded: 1987
Curriculum: Ontario Curriculum / Alberta Curriculum, Canada

Diocesan Boys School Primary Division & Diocesan Boys School

131 Argyle Street, Mongkok, Kowloon
Tel: 2711 5191
Email: dbsadmin@dbs.edu.hk
Website: www.dbs.edu.hk
Year founded: 1869
Curriculum: HKDSE, IBDP

Diocesan Girls' School

1 Jordan Road, Kowloon
Tel: 2277 9100
Email: info@dgs.edu.hk
Website: www.dgs.edu.hk
Year founded: 1860
Curriculum: HKDSE, A-Levels

Discovery Bay International School

Discovery Bay, Lantau Island
Tel: 3987 7331
Email: admissions@dbis.edu.hk
Website: www.dbis.edu.hk
Year founded: 1983
Curriculum: British National Curriculum and International Primary Curriculum

LOHAS Rink
welcome

Back to School

New Students* Join our regular ice skating or ice hockey classes this September and receive:

1. A Buy-1-get-1-free-coupon
2. A pair of gloves

*Offer valid for first-time participants in our regular ice skating or ice hockey classes (5 lessons per class)

Lesson Enquiry: 2622 8400 /
WhatsApp: 5400 6942

More information



Discovery Mind Kindergarten/ International Play Centre

Discovery Bay Campus
401, Marina Commercial Centre, G/F,
2-8 Coastline Villa, Peninsula Village, Discovery Bay
Tel: 2987 8088
Email: dmk@discoverymind.edu.hk
Tung Chung Campus
G/F, Seaview Crescent,
No. 8 Waterfront Road, Tung Chung
Tel: 2987 8070
Email: dmtc@discoverymind.edu.hk

Discovery Mind Primary School

Discovery Bay Campus
1/F, Shop 102, 92 Siena Avenue,
North Plaza, Discovery Bay
Tel: 2914 2202
Email: admission_db@discoverymind.edu.hk
Tung Chung Campus
G/F, Shop A-D Seaview Crescent,
No. 8 Waterfront Road, Tung Chung
Tel: 2915 0666
Email: admission_tc@discoverymind.edu.hk
Website: www.discoverymind.edu.hk
Year founded: 2012
Curriculum: IPC

Discovery Montessori Academy

Block 1, 92 Siena Ave, Discovery Bay,
Lantau Island, Hong Kong
Tel: 2812 9206
Email: primary@dms.edu.hk
Website: www.dms.edu.hk
Year founded: 2015
Curriculum: Montessori

Discovery Montessori School

Discovery Bay Campus
Shop 101, 1/F, 92 Siena Avenue,
Discovery Bay, Lantau Island, Hong Kong
Tel: 2987 1201
Email: enquiry@discoverymontessori.info
Central Campus
3/F, Mandarin Building, 34-43 Bonham Strand,
Central, Hong Kong
Tel: 2850 8006
Email: enquiry@dms.edu.hk
Website: www.dms.edu.hk
Year founded: 2010
Curriculum: Montessori

EIS International Preschool

No.1 San Wai Tsuen, San Tin, Yuen Long
Tel: 2889 7680 / 2889 7681
Fax: 2889 7331
Email: info@eminent-education.org
Website: www.emient-education.org
IG/Facebook: theeminenteducation
Year founded: 2020
Curriculum: EYFS, Nature-based Preschool

English Schools Foundation

25/F, 1063 King's Road, Quarry Bay, Hong Kong
Tel: 3762 2411
Email: info@esfcentre.edu.hk
Website: www.esf.edu.hk
Year founded: 1967



ESF Abacus International Kindergarten

1A Mang Kung Uk Road, Clearwater Bay
Tel: 2719 5712
Email: kinder@abacus.edu.hk
Website: www.abacus.edu.hk
Year founded: 2002
School Type: Private
Curriculum: IB Primary Years Programme

ESF Abacus International Kindergarten

1A Mang Kung Uk Road, Clearwater Bay
Tel: 2719 5712
Email: kinder@abacus.edu.hk
Website: www.abacus.edu.hk
Year founded: 2002
School Type: Private
Curriculum: IB Primary Years Programme

ESF Beacon Hill School

23 Ede Road, Kowloon Tong
Tel: 2336 5221
Email: bhs@bhs.edu.hk
Website: www.beaconhill.edu.hk
Year founded: 1967
School Type: ESF
Curriculum: IB Primary Years Programme

ESF Bradbury School

43C Stubbs Road, Happy Valley
Tel: 2574 8249
Email: enquiries@bradbury.edu.hk
Website: www.bradbury.edu.hk
Year founded: 1992
School Type: ESF
Curriculum: IB Primary Years Programme

ESF Clearwater Bay School

DD 229, Lot 235, Clearwater Bay Road, Clearwater Bay
Tel: 2358 3221
Email: info@cwbs.edu.hk
Website: www.cwbs.edu.hk
Year founded: 1980
School Type: ESF
Curriculum: IB Primary Years Programme

ESF Discovery College

38 Siena Avenue, Discovery Bay, Lantau Island
Tel: 3969 1000
Email: office@dc.edu.hk
Website: www.discovery.edu.hk
Year founded: 2007
School Type: Private
Curriculum: IB Primary Years Programme,
IB Middle Years Programme, IB Diploma

ESF Glenealy School

7 Hornsey Road, Mid Levels
Tel: 2522 1919
Email: enquiry@glenealy.edu.hk
Website: www.glenealy.edu.hk
Year founded: 1959
School Type: ESF
Curriculum: IB Primary Years Programme

ESF Hillside International Kindergarten

43B Stubbs Road, Mid-Levels East
Tel: 2540 0066
Email: kinder@hillside.edu.hk
Website: www.hillside.edu.hk
Year founded: 1999
School Type: Private
Curriculum: IB Primary Years Programme

ESF Island School

20 Borrett Road, Mid Levels
(permanent campus currently under redevelopment)
Temporary campuses:
Island School Sha Tin Wai (Years 7, 8, 12, 13)
Pok Hong Estate, Area 5A, Sha Tin, New Territories
Island School Tai Wai (Years 9, 10, 11)
Estate Secondary School No. 2, Sun Chui Estate,
Sha Tin
Tel: 2524 7135
Email: school@online.island.edu.hk
Website: www.island.edu.hk
Year founded: 1967
School Type: ESF
Curriculum: GCSE/IGCSEs, IB Diploma,
Applied Learning Programme (BTEC qualifications)

ESF Jockey Club Sarah Roe School

2B Tin Kwong Road, Homantin
Tel: 2761 9893
Email: info@jcsrs.edu.hk
Website: www.jcsrs.edu.hk
Year founded: 1985
School Type: ESF
Curriculum: Primary Learning Programme,
ASDAN Award Programme, Transition Challenge
Programme, Towards Independence Challenge

ESF Kennedy School

19 Sha Wan Drive, Pokfulam
Tel: 2579 5600
Email: admissions@kennedy.edu.hk
Website: www.kennedy.edu.hk
Year founded: 1961
School Type: ESF
Curriculum: IB Primary Years

ESF King George V School

2 Tin Kwong Road, Homantin
Tel: 2711 3029
Email: office@kgv.edu.hk
Website: www.kgv.edu.hk
Year founded: 1902
School Type: ESF
Curriculum: GCSE/IGCSEs, IB Diploma,
Applied Learning Programme (BTEC qualifications)

ESF Kowloon Junior School

20 Perth Street, Homantin, Kowloon, Hong Kong
Tel: 3765 8700
Email: office@kjs.edu.hk
Website: www.kjs.edu.hk
Year founded: 1902
School Type: ESF
Curriculum: IB Primary Years Programme

THE
GENIUS
WORKSHOP

2024 FALL TERM STEM PROGRAMS

BACK TO SCHOOL

LIMITED TIME DISCOUNT UNTIL SEP 14

10% OFF ON ALL PROGRAMS

FREE MINECRAFT LEGO SET

FALL TERM STEM PROGRAMS AGES 3 - 14

MECHANICS CODING
ROBOTICS ENGINEERING
MINECRAFT SCIENCE
ROBLOX A.I.

ENQUIRE AND RECEIVE OFFER AT

6211 1968

WHATSAPP



PROGRAM DETAILS



ESF Peak School

20 Plunketts Road, The Peak
Tel: 2849 7211
Email: office@peakschool.net
Website: www.ps.edu.hk
Year founded: 1911
School Type: ESF
Curriculum: IB Primary Years Programme

ESF Quarry Bay School

6 Hau Yuen Path, Braemar Hill, North Point
Tel: 2566 4242
Email: office@qbs.edu.hk
Website: www.qbs.edu.hk
Year founded: 1926
School Type: ESF
Curriculum: IB Primary Years Programme

ESF Sha Tin College

3 Lai Wo Lane, Fo Tan, Sha Tin
Tel: 2699 1811
Email: info@shatincollege.edu.hk
Website: www.shatincollege.edu.hk
Year founded: 1982
School Type: ESF
Curriculum: IGCSE, IB Diploma

ESF Sha Tin Junior School

3A Lai Wo Lane, Fo Tan, Sha Tin, New Territories
Tel: 2692 2721
Email: info@sjs.esf.edu.hk
Website: www.sjs.edu.hk
Year founded: 1988
School Type: ESF
Curriculum: IB Primary Years Programme

ESF South Island School

50 Nam Fung Road, Aberdeen, Hong Kong
Tel: 2555 9313
Email: sis@sis.edu.hk
Website: www.sis.edu.hk
Year founded: 1977
School Type: ESF
Curriculum: GCSE/IGCSEs, IB Diploma, IB Career-related Programme, Applied Learning Programme (BTEC qualifications)

ESF Tsing Yi International Kindergarten

Maritime Square, 33 Tsing King Road, Tsing Yi
Tel: 2436 3355
Email: admissions@tyk.edu.hk
Website: www.esf.edu.hk
Year founded: 1999
School Type: Private
Curriculum: IB Primary Years Programme

ESF Tung Chung International Kindergarten

1/F, Commercial Accommodation, The Visionary, 1 Ying Hong Street, Tung Chung, Lantau, N.T.
Tel: 3742 3500
Email: kinder@tc.esf.org.hk
Website: www.tck.edu.hk
Year founded: 2016
School Type: Private
Curriculum: IB Primary Years Programme

ESF West Island School

250 Victoria Road, Pok Fu Lam, Hong Kong
Tel: 2819 1962
Email: wis@wis.edu.hk
Website: www.wis.edu.hk
Year founded: 1991
School Type: ESF
Curriculum: GCSE/IGCSEs, IB Diploma, Applied Learning Programme (BTEC qualifications)

ESF Wu Kai Sha International Kindergarten

Level 1, Lake Silver Tower, 599 Sai Sha Road, Ma On Shan
Tel: 2435 5291
Email: kinder@wksk.edu.hk
Website: www.wksk.edu.hk
Year founded: 2009
School Type: Private
Curriculum: IB Primary Years Programme

EtonHouse International Pre-School

LG/F Kindergarten, Mayfair By The Sea I, 23 Fo Chun Road, Tai Po
Tel: 2780 5700
Email: enquiry@etonhouse.com.hk
Website: www.etonhouse.com.hk
Year founded: 1995
Curriculum: Inquiry based Reggio Emilia inspired curriculum

Fairchild Junior Academy

22/F, Park Commercial Centre, 180 Tung Lo Wan Road, Tin Hau, Hong Kong
Tel: 2898 1611
Email: info@fairchild.academy
Website: www.fairchild.academy
Year founded: 2016
Curriculum: Canadian Early Learning Framework



Fairchild Kindergarten

G/F & 1/F, Kong Chian Tower, Block 1, 351 Des Voeux Road West, Sai Ying Pun, Hong Kong
Tel: 2803 2638
Email: info@fairchild.edu.hk
Website: www.fairchild.edu.hk
Year founded: 2017
Curriculum: Canadian Early Learning Framework and Hong Kong Kindergarten Education Curriculum Guide

Forest House Waldorf School

Commercial Development Floral Villas, 18 Tso Wo Road, Sai Kung
Tel: 2792 6055
Email: info@foresthous.edu.hk
Website: www.waldorf.edu.hk
Year founded: 2014
Curriculum: Waldorf

French International School

Blue Pool Road Campus
165 Blue Pool Road, Happy Valley
Chai Wan Campus
1 Cheung Man Road, Chai Wan, Hong Kong
Jardine's Lookout Campus
34 Price Road, Jardine's Lookout, Hong Kong
Tseung Kwan O Campus
28 Tong Yin Street, Tseung Kwan O, N.T.
Tel: 2577 6217
Email: info@fhis.edu.hk
Website: www.fhis.edu.hk
Year founded: 1963
Curriculum: English National Curriculum to IGCSE then IBDP; French National Curriculum

Funful Group of Schools

Kindergarten Section
No.20 Durham Road, Kowloon Tong, Hong Kong
Tel: 2337 6883
Email: kln20funful@yahoo.com.hk
Website: www.kindergarten.funful.hk/
Primary Section
1 Cumberland Road, Kowloon Tong, Hong Kong
Tel: 2338 3434
Email: office@fsris.edu.hk
Website: www.fsris.edu.hk

Galilee International School – Kindergarten & Nursery

1/F Peace Garden, 2 Peace Avenue, Ho Man Tin, Kowloon
Tel: 2390 3000
Email: gis@gis.edu.hk
Website: www.gis.edu.hk
Year founded: 2014
Curriculum: International Baccalaureate (Primary Years Programme)

Garden House Waldorf School

G/F, Silverstrand Shopping Centre, 7 Silverstrand Beach Road, Clearwater Bay
Tel: 2358 1177
Email: info@gardenhouse.edu.hk
Website: www.gardenhouse.edu.hk
Year founded: 2008
Curriculum: Waldorf

German Swiss International School

Main Campus (Primary & Secondary)
11 Guildford Road, The Peak
Tel: 2849 6216
Pok Fu Lam Campus (Kindergarten & Lower Primary)
162 Pok Fu Lam Road, Pok Fu Lam, Hong Kong
Tel: 2849 6217
Email: info@gsis.edu.hk
Website: www.gsis.edu.hk
Year founded: 1969
Curriculum: GSIS is a multi-language through-train school, from Kindergarten to Secondary, operating two parallel streams - the German International Stream and the English International Stream - following curricula that respectively lead to the German International Abitur Diploma and the International Baccalaureate (IB) Diploma following IGCSE examinations in Year 11

Gigamind English Primary School

Block A, 9 Tin Lung Road, Phase 6, Maywood Court, Kingswood Villas, Tin Shui Wai, N.T.
Tel: 2446 9883
Email: info@gigamind.edu.hk

Gigamind Kindergarten & Children's House

Block B, 9 Tin Lung Road, Phase 6, Maywood Court, Kingswood Villas, Tin Shui Wai, N.T.
Tel: 2446 9210
Email: kginfo@gigamind.edu.hk
Website: www.gigamind.edu.hk
Year founded: 2001
Curriculum: Own

Good Time International Play School & Kindergarten

L4 Block C & D, Shatin Plaza, Shatin, New Territories
Tel: 2601 3278
Whatsapp: 9445 5085
Email: info@deikindergarten.org
Website: www.goodtimeeie.edu.hk

Grace Garden International Nursery and Kindergarten

Shop GA 12B – 14, G/F, Site A, 55 Tai Hong Street, Lei King Wan, Sai Wan Ho (MTR Station Exit A)
Tel: 2702 9778
Whatsapp: 6100 8339
Email: enquiry@gracegarden.edu.hk
Website: www.gracegarden.edu.hk
Year founded: 2015
Curriculum: Early Years Foundation Stage

Greenfield English (International) Kindergarten

The Long Beach
Unit 1 Kindergarten Area UG/F, 8 Hoi Fai Road, The Long Beach, West Kowloon
Tel: 3514 8081
Website: www.greenfield.edu.hk
Year Founded: 2011
Tung Chung
Podium, 1/F, Caribbean Bazaar, Caribbean Coast, 1 Kin Tung Road, Tung Chung, Lantau Island
Tel: 2162 5538
Website: www.greenfield.edu.hk
Lohas Park
Kindergarten Site, Hemera, Lohas Park III, Tseung Kwan O
Tel: 2246 4801
Website: www.greenfield.edu.hk
Year Founded: 2016
Tseung Kwan O
G/F., Shop & Podium Level 1, Nan Fung Plaza, Tseung Kwan O
Tel: 2274 2238
Website: www.greenfield.edu.hk
Mont Vert
The Kindergarten, Mont Vert, 9 Fung Yuen Road, Tai Po
Tel: 3907 0178
Website: www.greenfield.edu.hk
Ma On Shan
Shop A1-a & 2/F, Podium, Ma On Shan Centre, Ma On Shan, New Territories
Tel: 2633 0327
Fax: 2640 4474
Website: www.greenfield.edu.hk

Guidepost Montessori

Chai Wan Campus
Kindergarten, Harmony Garden, 9 Siu Sai Wan Rd, Chai Wan
Clearwater Bay Campus
Level 7, Silverstrand Mart, Clear Water Bay Rd, Clear Water Bay, Sai Kung
Guidepost Family Club Causeway Bay
G02-G03, Leighton Centre, 77 Leighton Rd, Causeway Bay
Discovery Bay Campus
1-06, 1/F, 92 Siena Avenue, Discovery Bay North, Discovery Bay
Happy Valley Hawthorn Road Campus
2 Hawthorn Road, Happy Valley
Happy Valley Sing Woo Road Campus
1/F, Happy Court, 39E Sing Woo Rd, Happy Valley
Kennedy Town Campus
1-2 Floor 554-560 Queen's Road West Sai Wan, Shek Tong Tsui
Mid-Levels Campus (opening in August 2024)
On Fung Building, 110-118 Caine Road, Mid-Levels, Hong Kong
Pok Fu Lam Campus
L101 Chi Fu Landmark, Chi Fu Fa Yuen, Pok Fu Lam
Repulse Bay Campus (opening in August 2024)
2/F, 35 Beach Road Repulse Bay, Hong Kong
Sai Kung Campus (opening in August 2024)
Shop D, G/F, Marina Cove Shopping Centre, Sai Kung, N.T., Hong Kong
Academy of Innovation Primary School
77 Caroline Hill Road, Causeway Bay
Tel: 9126 6211
Email: admissions@guidepost.hk
Website: guidepost.hk

Hamilton Hill International Kindergarten

2/F Tang Kung Mansion, 31 Tai Koo Shing road. Tai Koo
Tel: 2567-5454
Website: www.hhik.edu.hk

Han Academy

G/F-2/F, 33-35 Wong Chuk Hang Road, Aberdeen
Tel: 3998 6300
Email: admission@hanacademy.edu.hk
Website: www.hanacademy.edu.hk
Year Founded: 2017
Curriculum: Cambridge (Primary, Secondary, IGCSE, A Level), IBDP (candidate school)

Harrow International School Hong Kong

38 Tsing Ying Road, Tuen Mun
Tel: 2824 9099
Email: admissions@harrowschool.hk
Website: www.harrowschool.hk
Year founded: 2012
Curriculum: International

Highgate House School

2/F, 100 Peak Road, The Peak
Tel: 2849 6336
Website: www.highgatehouse.edu.hk
Year founded: 1992
Curriculum: Waldorf

HKCA Po Leung Kuk School

62 Tin Hau Temple Road, Hong Kong
Tel: 3465 8400
Email: info@plkis.edu.hk
Website: www.plkis.edu.hk
Year Founded: 2017
Curriculum: IBPYP

Hong Kong Academy

33 Wai Man Road, Sai Kung
Tel: 2655 1111
Email: admissions@hkacademy.edu.hk
Website: www.hkacademy.edu.hk
Year founded: 2000
Curriculum: IBPYP, IBMYP, IBDP



Hong Kong Adventist Academy

1111 Clear Water Bay Road, Sai Kung
Tel: 2623 0034
Email: info@hkaa.edu.hk
Website: www.hkaa.edu.hk
Year founded: 2011
Curriculum: Local curriculum with electives from the American curriculum

Hong Kong Chinese Christian Churches Union Logos Academy

Campus I
No. 5, Ling Kwong Street, Tseung Kwan O, N.T.
Tel: 2337 2126
Campus II
No. 1, Kan Hok Lane, Tseung Kwan O, N.T.
Tel: 2337 2123
Email: info@logosacademy.edu.hk
Website: www.logosacademy.edu.hk
Year founded: 2011
Curriculum: HKDSE, IBDP

Hong Kong International Learning Academy

Unit 7 & 8G Office Block One, North Plaza, 92 Siena Avenue, Discovery Bay
Tel: 2416 3198
Email: hkilacademy@gmail.com
Website: https://www.studyhkila.com

Hong Kong International School

Tai Tam Campus
1 Red Hill Road, Tai Tam
Tel: 3149 7000
Repulse Bay Campus
23 South Bay Close, Hong Kong
Tel: 2812 5000
Email: admissions@hkis.edu.hk
Website: www.hkis.edu.hk
Year founded: 1966
Curriculum: American with Advanced Placement courses offered in High School

Hong Kong Man Sang Kindergarten

Western District
Shop A, G/F & 1/F, Nice Garden,
513-519 Queen's Road West
Tel: 2336 3232
Website: www.mansangkg.edu.hk
Year Founded: 2016
North Point
2/F Foo Yet Kai Building, 52-60 Java Road,
North Point
Tel: 2578 6763
Website: www.mansangkg.edu.hk
Year Founded: 1969
Email: admission@mansangkg.edu.hk

Hong Kong Nobel Preschool

G/F-2/F, 65 Waterloo Road, Kowloon
Tel: 2338 7899
Website: www.nobelpreschool.org
Year Founded: 2015

International Christian School

Shek Mun Campus
1 On Muk Lane, Shek Mun
Tel: 3920 0000
Ma On Shan Campus (International Kindergarten)
G/F, Kam Ho House (Block H),
Kam Fung Court, Ma On Shan, Shatin, N.T.
Email: ics@ics.edu.hk
Website: www.ics.edu.hk
Year founded: 1991
Curriculum: American, AP

International College Hong Kong (Secondary)

60 Sha Tau Kok Road, Shek Chung Au, Sha Tau Kok
Tel: 2655 9018
Email: info@ichk.edu.hk
Website: www.ichk.edu.hk
Year founded: 1984
Curriculum: IBPYP, English, IGCSE, IBDP

International College Hong Kong Hong Lok Yuen (Kindergarten & Primary)

3, Twentieth Street, Hong Lok Yuen, Tai Po
Tel: 3955 3000
Email: info@ichkhly.edu.hk
Website: www.ichk.edu.hk
Year founded: 1984
Curriculum: IBPYP, English, IGCSE, IBDP

Invictus School Hong Kong

Tseung Kwan O Campus (Kindergarten & Primary)
Monterey Place, 23 Tong Chun Street, Tseung Kwan O
Tel: 3643 1868
Email: admissions@invictus.edu.hk
Chai Wan Campus (Secondary)
188 Tai Tam Road, Chai Wan
Tel: 3852 7200
Email: admissions.chaiwan@invictus.edu.hk
Website: www.invictus.edu.hk



Island Children's Montessori Kindergarten

Tin Hau Campus
Units B & C, LG/F & UG/F,
16 Tin Hau Temple Road, Tin Hau
Lei King Wan Campus
Shop GC 19-21 Site C, Tai Hong Street, Lei King Wan
Tel: 3421 9100
Email: admissions@icms.edu.hk

Island Montessori International Kindergarten

North Point Campus
Commercial Unit, G/F, Bedford Gardens,
151-173 Tin Hau Temple Road, North Point, HK
Tel: 3427 9100
Email: info@icms.edu.hk
Website: www.icms.edu.hk
Year founded: 2010
Curriculum: Montessori
Lei King Wan Campus
Shop GC 19-21, G/F, Lei King Wan,
Site C, 35 Tai Hong Street, Sai Wan Ho
Tel: 2562 8500
Website: http://icms.edu.hk
Year Founded: 2012

Island Waldorf School

Primary & middle school
1/F 455 Queen's Road West, Sai Wan, Hong Kong
Kindergarten
G/F 71-77 Smithfield, Kennedy Town, Hong Kong
Outdoor Activities Centre
Ka Nam New Village, Lamma Island
Tel: 5114 1451
Email: info@iws.edu.hk
Website: www.iws.edu.hk

Italian International Kindergarten

Podium Level 1, Block 4, Phase 1,
South Horizons, Ap Lei Chau, Hong Kong
Tel: 2662 3066
Email: info@iikg.edu.hk
Website: www.iikg.edu.hk
Year Founded: 2019

Japanese International School (International Section)

4663 Tai Po Road, Tai Po
Tel: 2834 3531
Email: esinfo@jis.edu.hk
Website: es.jis.edu.hk
Year founded: 1997
Curriculum: IB Primary Years Programme

Kellett School

Kowloon Bay Preparatory and Senior Campus
7 Lam Hing Street, Kowloon Bay
Po Fu Lam Preparatory Campus
2 Wah Lok Path, Wah Fu, Pok Fu Lam, Hong Kong
Tel: 3120 0700
Email: admissions@kellettschool.com
Website: www.kellettschool.com
Year founded: 1976
Curriculum: English National Curriculum including IGCSE and A-level

Kendall International Preschool

G/F, Residence 228, 228 Fuk Wing Street,
Cheung Sha Wan, West Kowloon, Hong Kong
Tel: 2328 8223
Email: info@kendallpreschool.edu.hk
Website: www.kendall.edu.hk/
Year Founded: 2017
Curriculum: Own

Kiangsu & Chekiang Primary School & Kiangsu-Chekiang College (International Section)

Lower School
30 Ching Wah Street, North Point, Hong Kong
Tel: 2570 4594
Upper School
20 Braemar Hill Road, North Point
Tel: 2570 1281
Email: inter@kcis.edu.hk (Primary)
Email: inter2@kcis.edu.hk (Secondary)
Website: www.kcis.edu.hk
Year founded: 1993
Curriculum: Early Years Foundation Stage (EYFS);
British National Curriculum; IB Diploma

Kingston International Kindergarten and Children Centre

G/F & 1/F, 12-14 Cumberland Road, Kowloon Tong
Tel: 2337 9049
Email: enquiry@kingston.edu.hk
Website: www.kingston.edu.hk
Curriculum: IB Primary Years Programme

Kingston International School

Lower Primary Campus
113 Waterloo Road, Kowloon Tong, Kowloon
Tel: 2337 9031
Upper Primary Campus
105 Waterloo Road, Kowloon Tong, Kowloon
Tel: 2337 9012
Email: enquiry@kingston.edu.hk
Website: www.kingston.edu.hk
Curriculum: IB Primary Years Programme

Kohitsuji Kindergarten

Shop 1, G/F, Site 10, Whampoa Garden, Hung Hom
Tel: 2330 6677
Website: www.kohitsujiyouchien.com
Year Founded: 2013

Kornhill International Nursery (Kornhill Anglo Chinese Kindergarten)

G/F 16 Hong Shing Street, Kornhill, Quarry Bay, HK
Tel: 2884 4186
Email: admin@kornhill-edu.com
Website: www.kornhill-edu.com
Year Founded: 1986
Curriculum: Teaching Strategies. The Creative Curriculum for Preschool

Korean International School

55 Lei King Road, Sai Wan Ho, Hong Kong
Tel: 2569 5500
Email: admissions@kis.edu.hk
Website: www.kis.edu.hk
Curriculum: IPC, UK, IGCSE, A-Levels, Korean



Kowloon Baptist Church Kindergarten

G/F., 45-47 Grampian Road, Kowloon
Tel: 2336 6213
Email: admission@kbck.edu.hk
Website: www.kbck.edu.hk

Kowloon Cannan Anglo-Chinese Kindergarten

G/F, 28B Grampian Road, Kowloon Tong
Tel: 2336 2096
Website: www.cannan.edu.hk
Year Founded: 1983

Lady Eleanor Holles International School Foshan

26 Jingping Road, Chancheng District 528000,
Foshan
Tel: +86 757 2992 8101
Email: admissions@leh-foshan.cn
Website: http://www.leh-foshan.cn/

Lantau International School

Cheung Sha Campus
No. 22, Upper Cheung Sha Village,
Lantau Island, Hong Kong
Tel: 2984 0302
Tong Fuk Campus
House 113, Tong Fuk Village, Lantau, Hong Kong
Tel: 2980 3676
Pui O Campus
No. 17-19, Lo Wai Tsuen, Pui O,
Lantau Island, Hong Kong
Tel: 2984 0302
Email: lisadmin@lis.edu.hk
Website: www.lis.edu.hk
Year founded: 1995
Curriculum: British Curriculum

Leapfrog Kindergarten and Playgroup

11 Pak Tam Chung Village,
Sai Kung Country Park, Sai Kung
Tel: 2791 1540
Email: admim@leapfrogkindergarten.org
Website: www.leapfrogkindergarten.org
Year founded: 1992
Curriculum: EYFS

Learning Habitat Kindergarten

Hampton Loft Campus
Shop 2, 5/F Hampton Loft, 11 Hoi Fan Road, Tai
Kok Tsui
Tel: 2501 5105
Website: www.learninghabitat.org
Year Founded: 2005
Papillons LP Campus
Shop 12, 15 & 16, G/F Papillons Square,
21 Tong Chun Street, Tseung Kwan O
Tel: 2363 3005
Website: www.learninghabitat.org
Year Founded: 2010

Les Petits Lascars French International Preschool

Central Campus
2 & 3/F, Wellington Plaza,
56-58 Wellington Street, Central
Tseung Kwan O Campus
G01, Capri Place, 33 Tong Yin Street, Tseung Kwan O
Wong Chuk Hang Campus
Units 306-307, 3/F, One Island South,
2 Hung Yip Road, Wong Chuk Hang
Tel: 2526 8666
Email: admissions@petitslascars.com
Website: hkkidsacademy.edu.hk/les-petits-lascars
Year founded: 2006
Curriculum: French

Li Po Chun United World College

10 Lok Wo Sha Lane, Sai Sha Road, Shatin
Tel: 2640 0441
Email: office@lpcuwc.edu.hk
Website: www.lpcuwc.edu.hk
Year founded: 1992
Curriculum: IBDP

Little Lantau Montessori Kindergarten

Unit 12 & 13, G/F, Silverview Centre,
8 Ngan Kwong Wan Road, Mui Wo, Lantau Island
Tel: 3689 7033

Lou Pichoun French International Preschool Hong Kong

Tseung Kwan O Campus
1A-2A, G/F, Alto Residences,
29 Tong Yin Street, Tseung Kwan O
Tel: 2813 4277 / 6304 1021
Website: www.loupichoun.com
Stanley Campus
1/F, 5 Stanley New Street, Stanley, Hong Kong
Tel: 2813 2456
Happy Valley Campus
G/F Door C, 22 Fung Fai Terrace, Hong Kong
Tel: 2813 2456
Email: info@loupichoun.com
Website: www.loupichoun.com
Year founded: 1997
Curriculum: French, Own

Ludus Kindergarten

2/F, Le Billionnaire,
46 Sa Po Road, Kowloon City
Tel: 2382 0061
Website: www.ludus.edu.hk
Year Founded: 2015

MAGART International Kindergarten

Whampoa Campus
Shop G3A, Site 7, Whampoa Garden,
9 Tak On Street, Hong Kong
Tel: 2786 9314 / 2786 0788
WhatsApp: 9879 1509
Email: info.wp@magartedu.com
Kornhill Campus
16 Hong Shing St, Kornhill, Quarry Bay, Hong Kong
Tel: 2786 9152 / 2786 9189
WhatsApp: 6717 3175
Email: info.tk@magartedu.com
Fanling Campus
G/F, Phase 1, Fanling Centre,
New Territories, Hong Kong
Tel: 2677 8109
WhatsApp: 9445 8322
Email: info.fl@magartedu.com
Year Founded: 2018
Curriculum: Enhanced EYFS, Reggio Emilia
and inquiry approach

Malvern College Hong Kong

3 Fo Chun Road, Pak Shek Kok, New Territories
Tel: 3898 4688
Email: admissions@malverncollege.org.hk
Website: www.malverncollege.org.hk
Year founded: 2018
Curriculum: IB



Malvern College Pre-School Hong Kong Island West

G/F & 1/F Viking Court,
165-166 Connaught Road West,
Sai Ying Pun, Hong Kong
Tel: 3898 4670
E-mail: iw-office@malvernpreschool.hk
Coronation Circle
Units 9-12, Coronation Circle,
1 Yau Cheung Road, Southwest Kowloon
Tel: 3898 4660
E-mail: office@malvernpreschool.hk
Website: www.malvernpreschool.hk

Maple Bear Canadian International Kindergarten Hong Kong

Shop 7, G/F, Alto Residences,
29 Tong Yin Street, Tseung Kwan O
Tel: 2813 4887 / 6848 1264
Email: admissions@maplebear.hk
Website: www.maplebear.hk

MASS International Preschool

Shop 2, G/F & LG/F, Lai Tak Plaza,
Tai Hang, Hong Kong
Tel: 3955 1588
Email: info@masspreschool.edu.hk
Website: www.masspreschool.com
Year founded: 2012
Curriculum: Other

Mighty Oaks Nursery & Kindergarten

1/F, Lungga Mansion, 46A Belcher's Street,
Kennedy Town, Hong Kong
Tel: 2806 8383
Email: info@mightyoaks.edu.hk
Website: www.mightyoaks.edu.hk
Year founded: 2015
Curriculum: Early Years Foundation Stage

Ming Wai International Kindergarten

Flat A & B, G/F & 1/F, Alice Court,
10-12 Tsat Tsz Mui Road, North Point
Tel: 2561 5008
Website: www.mingwai.edu.hk
Year Founded: 1982
North Point Branch
Shop 1 G/F & 1/F, Fairview Court,
5-13 Tsat Tsz Mui Road, North Point
Prince Edward Branch
Shop 6 of G/F & Flat 1-5 of 1/F,
Kenwood Mansion, 15 Playing Field Road,
Prince Edward
Tel: 2522 2688

Mills International Preschool

The Spectacle, 8 Cho Yuen Street,
Yau Tong, Kowloon, Hong Kong
Tel: 2717 6336
Email: preschool@millsinternational.edu.hk
Website: www.millsinternational.edu.hk
Year founded: 2013
Curriculum: Early Years Foundation Stage

Montessori for Children

House A, Phoenix Garden,
RBL 1033 Tai Tam Village, Stanley, Hong Kong
Tel: 2813 9589
Email: hongkong@montessori.edu.sg
Website: www.montessori.edu.sg
Year founded: 1986
Curriculum: Montessori

Mori Lisa International Kindergarten

Level 5 Flat Roof, Block 7,
Greenwood Terrace, Chai Wan
Tel: 3176 1236
Email: info@morilisa.hk
Website: www.morilisa.hk
Year founded: 2014
Curriculum: Early Years Foundation Stage

Morningstar Preschool and Kindergarten

Block 2, G/F, Chi Fu Fa Yuen, Pok Fu Lam
Tel: 6993 7157
Email: hello@morningstarschools.com
Website: www.morningstarpreschool.com.hk
Year founded: 2011
Curriculum: International

Mui Wo OWLS School & Kindergarten

1/F, Unit A, Silver Centre Building,
Mui Wo Ferry Pier Road, Mui Wo, Lantau
Tel: 2984 0006
Email: office@muiwoowlsschool.edu.hk
Website: www.muiwoowlsschool.edu.hk
Year founded: 2010
Curriculum: English

Mulberry House International Kindergarten

Southside Campus
Shops 1 & 2, G/F, Ocean Court,
3 Aberdeen Praya Road, Aberdeen, HK
Tel: 5598 0555
Tai Po Campus
LG/F Kindergarten, Mayfair By The Sea I,
23 Fo Chun Road, Tai Po, HK
Tel: 5598 0909
Website: https://mulberryhousekg.com/

Munsang College Kindergarten

G/F-1/F, Block A & G/F-2/F, Block F,
8 Dumbarten Road, Kowloon City
Tel: 3655 3500
Website: www.munsang.edu.hk
Year Founded: 1926

Mynors International Kindergarten

Portion A, Commercial Unit, Shop 1-11,
1/F Belair Monte Shopping Centre,
3 Ma Sik Road, Fanling
Tel: 2355 7500
Website: www.mynors.hk

Nord Anglia International School Hong Kong

Early Years Campus
285 Hong Kin Road, Tui Min Hoi, Sai Kung, New Territories
Primary Campus
11 On Tin Street, Lam Tin, Kowloon
Secondary Campus
19 Yuet Wah Street, Kwun Tong, Kowloon
Tel: 3958 1428
Email: admissions@nais.hk
Website: www.nais.hk
Year founded: 2014
Curriculum: English, IGCSE, IBDP



Norwegian International School

Kindergarten Campus
175 Kwong Fuk Road, Tai Po
Tel: 2638 0269
Email: kinder@nis.edu.hk
Primary School Campus
170 Kam Shan Road, Kam Shan Village, Tai Po
Tel: 2658 0341
Email: office@nis.edu.hk
Website: nis.edu.hk
Year founded: 1984
Curriculum: IPC, UK Literacy Curriculum, Australian Mathematics Curriculum



Oisca Japanese Kindergarten

G/F Ming Yuen Mansion, 26-48 Peacock Road, North Point
Tel: 2775 5899
Website: www.oisca-youchien.ni
Year Founded: 1986

Ontario eSchool

4/F Tower, 6 Bowring St, Jordan
Tel: 2393 8321/ 2393 8312
Email: info@oesasia.org
Website: www.oesasia.org



Oxbridge School

G/F B & 1F, Star Ruby, 1 San Wai Street,
Hung Hom, Kowloon
Tel: 2612 1888
Email: admissions@oxbridgeschool.hk
Website: www.oxbridgeschool.hk

Parkview International Pre-School

Podium Level, Kowloon Station,
1 Austin Road West, Kowloon
Tel: 2812 6801
Email: pipsinfo-kl@pips.edu.hk
Website: www.pips.edu.hk
Year founded: 2007
Curriculum: International Baccalaureate (IB)

Parkview Rhine Garden Pre-school

Tower 1, 1st Floor, Rhine Garden,
38 Castle Peak Road, Sham Tseng, N.T.
Tel: 2491 1082
Email: school@pipsrg.edu.hk
Year founded: 1994

Parkview-Rhine Garden International Nursery

Tower 5, 1Podium Level 2, Rhine Garden,
38 Castle Peak Road, Sham Tseng, N.T.
Tel: 2496 2080
Email: school@pipsrg.edu.hk
Website: pipsrg.edu.hk
Year founded: 1994

Po Leung Kuk Choi Kai Yau School

6 Caldecott Road, Piper's Hill, Kowloon
Tel: 2148 2052
Email: info@cky.edu.hk
Website: www.cky.edu.hk
Year founded: 2002
Curriculum: Own, IGCSE, IBDP

Pods Kindergrten & Preschool

Tin Hau Campus
11 Tin Hau Temple Road, Tin Hau, Hong Kong
Tel: 3460 3560
Harbour Heights Campus
G01B & 1/F, Harbour Heights,
1 Fook Yum Road, North Point, Hong Kong
Tel: 2242 2261
Email: info@pods.com.hk
Website: www.pods.com.hk
Year founded: 2013
Curriculum: Own

Renaissance College ESF

5 Hang Ming Street, Ma On Shan
Tel: 3556 3556
Email: admissions@rchk.edu.hk
Website: www.rchk.edu.hk
Year founded: 2006
School Type: Private
Curriculum: IB Primary Years Programme,
IB Middle Years Programme, IB Diploma,
IB Career-related Programme

Rightmind International Nursery & Kindergarten

Shum Wan Campus
G/F, Broadview Court, No. 11 Shum Wan Road,
Hong Kong
Tel: 2795 1018
South Horizons Campus
UG/F, Tower 26-28, South Horizons, Phase 4, Ap
Lei Chau
Tel: 2875 0452
Email: parentservice@kinderu.org
Website: www.rmkg.org
Year founded: 1980
Curriculum: Other

Rosebud Primary School

UG 28-37 Waterside Plaza, 38 Wing Shun Street,
Tsuen Wan
Tel: 2406 7300
Email: info@rosebud.edu.hk
Website: www.rosebud.edu.hk
Year Founded: 2004
Curriculum: IPC

Safari Kid International Kindergarten

Happy Valley Campus
16 Min Fat Street, Happy Valley, Hong Kong
Tel: 2177 0001
Email: happyvalley@safarikidasia.com
Pok Fu Lam Campus
L101 Chi Fu Landmark, Chi Fu Fa Yuen, Pok Fu Lam
Tel: 2177 0001
Email: info@safarikidasia.com
Website: www.safarikidasia.com
Year founded: 2005
Curriculum: Other

Sai Kung International Pre-school

159 Che Keng Tuk Road, Sai Kung
Tel: 2791 7354
Email: skip@skip.edu.hk
Website: skip.edu.hk
Year founded: 1989
Curriculum: Early Years Foundation Stage

Sai Kung Montessori

Unit SB, 787 Tan Cheung, Po Tung Road, Sai Kung
Tel: 5369 8587
Email: info@saikungmontessori.com
Website: www.saikungmontessori.com
Year Founded: 2017
Curriculum: Montessori

Saint Bright International Kindergarten

G/F & 1/F, Cameron Mansion,
29-31 Lion Rock Road, Kowloon City
Tel: 2337 5255
Website: www.stbrigt.edu.hk
Year Founded: 2014

Salesian School

Address: 16 Chai Wan Road, Shau Kei Wan, Hong Kong
Tel: 2885 0032
Email: mail@salesian.edu.hk
Website: salesian.edu.hk
Year Founded: 1951

Curriculum: Local curriculum with internationalised timetable & Multiple Intelligence electives



Sear Rogers International School

Tseun Wan Campus
Portion A, Podium E, 4/F, Riviera Gardens, Tsuen Wan
Tel: 2547 5479
Email: enquiry@sris.edu.hk
Website: www.sris.edu.hk
Year founded: 1982
Curriculum: English, IGCSE, A-Levels

SDM-Chatsworth International Kindergarten & Nursery

166 Boundary Street, Kowloon Tong
Tel: 2560 3322
Email: info@sdm-chatsworth.hk
Website: www.sdm-chatsworth.hk
Year Founded: 2017
Curriculum: Singapore-based curriculum

Shrewsbury International School Hong Kong

10 Shek Kok Road, Tseung Kwan O
Tel: 2480 1500
Email: admissions@shrewsbury.edu.hk
Website: www.shrewsbury.edu.hk
Year founded: 2018
Curriculum: English National Curriculum



Singapore International School

Preparatory Years and Primary Section
23 Nam Long Shan Road, Aberdeen
Tel: 2872 0266
Email: general@singapore.edu.hk
Secondary Section
2 Police School Road, Wong Chuk Hang, Hong Kong
Tel: 2919 6966
Email: secondary@singapore.edu.hk
Website: www.singapore.edu.hk
Year founded: 1991
Curriculum: Singapore curriculum, IGCSE, IBDP

Small World Christian Kindergarten

10 Borrett Road, Mid-Levels
Tel: 2525 0922
Email: office@smallworld.edu.hk
Website: smallworld.edu.hk
Year founded: 1986

Spanish Primary School

130 Shuen Wan Chan Uk Tai Po, N.T., Hong Kong
Tel: 3955 1588
Email: info@spis.com.hk
Website: www.spis.com.hk

St. Catherine's International Kindergarten

Campus 1

1 Essex Crescent, Kowloon Tong
Tel: 2337 7273

Website: www.stcatherines.edu.hk

Year Founded: 1970

Campus 2

4 & 6 Norfolk Road, Kowloon Tong

Tel: 2337 7344 / 2337 7680

Website: www.stcatherines.edu.hk

Year Founded: 1970

St. Catherine's Kindergarten (Harbour Place)

1/F Harbour Place, 8 Oi King Street, Hung Hom

Tel: 2670 6600

Website: www.stcatherines.edu.hk

Year Founded: 2011

St. Paul's Covent School (Secondary Section)

140 Leighton Road, Causeway Bay, Hong Kong

Tel: 2576 0601

Website: www.spcs.edu.hk

Year founded: 1854

Curriculum: HKDSE, IGCSE, A-Levels

St. Stephen's College

22 Tung Tau Wan Road, Stanley, Hong Kong

Tel: 2813 0360

Email: sschk@ssc.edu.hk

Website: www.ssc.edu.hk

Year founded: 1903

Curriculum: IBDP, HKDSE

Stamford American School Hong Kong

25 Man Fuk Road, Ho Man Tin

Tel: 2500 8688

Email: admissions@sais.edu.hk

Website: www.sais.edu.hk

Year founded: 2017

Curriculum: Inquiry-based American

Curriculum with AERO and Common Core Plus Standards

The Harbour School

The Grove (Primary Campus)

332 Ap Lei Chau Bridge Road, Ap Lei Chau

The Garden (Secondary Campus)

138 Lee Chi Road, Ap Lei Chau

Tel: 3612 1090

Email: admissions@ths.edu.hk

Website: www.ths.edu.hk

Year founded: 2007

Curriculum: American

The International Montessori School of Hong Kong

Aldrich Bay Campus

G/F, i-UniQ Grand, 155 Shau Kei Wan Road, Shau Kei Wan, Hong Kong

Tel: 2156 9033

Email: admin.ab@ims.edu.hk

Mid-Level Campus

Mezzanine Entrance, Tung Fai Gardens,

17 Po Yan Street, Sheung Wan, Hong Kong

Tel: 2857 7007

Email: admin.ml@ims.edu.hk

South Horizons Campus

G/F, Blocks 23 to 23A, South Horizons,

Phase III, Ap Lei Chau, Hong Kong

Tel: 2861 0339

Email: admin.sh@ims.edu.hk

Stanley Campus

Phase III, Ma Hang Estate,

Stanley (off Stanley Plaza), Hong Kong

Tel: 2566 7196

Email: admin.st@ims.edu.hk

Website: www.ims.edu.hk

Year founded: 2002

Curriculum: Montessori

The ISF Academy

1 Kong Sin Wan Road, Pokfulam, Hong Kong

Tel: 2202 2028

Email: admissions@isf.edu.hk

Website: academy.isf.edu.hk

Year founded: 2003

Curriculum: Own, IBMYP, IBDP

The ISF Pre-School

Shop G01, G/F, 97 Belcher's Street,

Kennedy Town, Hong Kong

Tel: 2559 8518

Email: psenquiry@isf.edu.hk

Website: preschool.isf.edu.hk

Year founded: 2015

Curriculum: Other

Think International Academy

11 Kwong Lee Road, Cheung Sha Wan

Tel: 2157 2111

Email: think_ta@think.edu.hk

Website: www.think.edu.hk

Year founded: 2016

Curriculum: IBPYP, Cambridge CIE Secondary 1 &

2, IBDP

Think International School

117 Boundary Street, Kowloon Tong, Kowloon

Tel: 2338 3949

Email: think_tis@think.edu.hk

Think International Kindergarten

Kowloon Tong Campus

5 Lincoln Road, Kowloon Tong

Tel: 2338 0211

Email: thinkkg_kt@think.edu.hk

Laguna Campus

99 Cha Kwo Ling Road G/F, Kowloon

Tel: 2727 4747

Email: thinkkg_lc@think.edu.hk

Ma On Shan Campus

Level 2, Sunshine Bazaar,

628 Sai Sha Road, Ma On Shan, New Territories

Tel: 2633 7800

Email: thinkkg_mos@think.edu.hk

Mei Foo Campus

The Podium, Nob Hill, 8 King Lai Path, Mei Foo,

Kowloon

Tel: 2727 7585

Email: thinkkg_mf@think.edu.hk

Website: www.think.edu.hk

Year founded: 2003

Curriculum: Other

Topkids International Kindergarten (Yuen Long)

G/F (part of) & 1/F, Shing Fat Building,

14 Yuen Long Tai Cheung Street, Yuen Long

Tel: 2447 2669

Website: www.topkids.edu.hk

Tsim Sha Tsui Funful International Kindergarten

No. 136 Nathan Road, Tsim Sha Tsui, Kowloon

Tel: 2311 3883 / 2311 4707

Website: www.funful.hk

Year founded: 1969

Curriculum: Local, International

Tutor Time International Nursery & Kindergarten

Kowloon Tong – Dorset Crescent

No. 1 Dorset Crescent, Kowloon Tong

Tel: 2573 9188

Kowloon Tong – Suffolk Road

No. 9 Suffolk Road, Kowloon Tong

Tel: 2529 1188

Mid Level – Caine Road

Shop A-B, G/F, Botanical Court,

5 Caine Road, Mid-Levels, Hong Kong

Tel: 2529 2288

North Point - Braemar Hill

LG/F & G/F Braemar Hill Shopping Center,

45 Braemar Hill Road, Hong Kong

Tel: 3529 1833

Yuen Long – Yoho

Shop G011, Ground Level and Mezzanine Level,

Yoho Mall 1, No. 9 Yuen Lung Street,

Yuen Long, N.T.

Tel: 2392 8188

Email: info@tutortime.com.hk

Website: www.tutortime.com.hk

Year founded: 2001

Umah International Primary School

Fung Chi Tsuen, Wang Chau, Yuen Long, N.T.

Tel: 2618 3172 / 2450 5401

Email: umahdin@umahhk.com

Website: umahhk.com

Year founded: 1996

Curriculum: Own

Victoria Shanghai Academy

19 Shum Wan Road, Aberdeen

Tel: 3402 1000

Email: enquiries@vsa.edu.hk

Website: www.vsa.edu.hk

Year founded: 2004

Curriculum: IBPYP, IBMYP, IBDP

Victoria Education Organisation

Belcher Campus

Podium of Level 3 (Kindergarten Area),

The Westwood, 8 Belcher's Street, Hong Kong

Tel: 2542 7001

Email: bgvkoffc@victoria.edu.hk

Harbour Green Campus

G/F, Harbour Green, 8 Sham Mong Road, Kowloon

Tel: 2885 1928

Email: hgvk@victoria.edu.hk

Harbour Heights Campus

Ko Fung Court, Harbour Heights,

5 Fook Yum Road, North Point, Hong Kong

Tel: 2571 7888

Email: hhvnoff2@victoria.edu.hk

Homantin Campus

1/F, Carmel-on-the-Hill, 9 Carmel Village Street,

Homantin, Kowloon

Tel: 2762 9130

Email: hmtoffc@victoria.edu.hk

Lower Kornhill Campus

2-8 Hong On Street, Kornhill, Hong Kong

Tel: 2885 3331

Email: lkvkoffc@victoria.edu.hk

Middle Kornhill Campus

2/F, No. 18 Hong On Street, Kornhill, Hong Kong

Tel: 2885 1888

Email: mkvkoffc@victoria.edu.hk

South Horizons Campus

Phase II, Podium Level,

South Horizons, Hong Kong

Tel: 2580 8633

Email: shvkoffc@victoria.edu.hk

Upper Kornhill Campus

G/F, 14 Hong Yue Street, Kornhill, Hong Kong

Tel: 2513 1208

Email: ukoffc@victoria.edu.hk

Website: www.victoria.edu.hk

Year founded: 1965

Curriculum: IBPYP, TCRWP

Ocean Pride Campus

G36 – G37 & Kindergarten

G/F, Ocean Pride Mall, 100 Tai Ho Road,

Tsuen Wan West

Tel: 2186 6222

Email: opvk@victoria.edu.hk

Wellborn International Pre-school

G/F, Nursery Block,

Chevalier Garden, Ma On Shan

Tel: 2642 6033

Website: www.wellborn.edu.hk

Wilderness International Kindergarten

Ground Floor, Po Tak Mansion,

85 Smithfield Rd, Kennedy Town, Hong Kong

Tel: 2595 9066

Email: admissions@wilderness.asia

Website: www.wilderness.asia

Year founded: 2016

Wycombe Abbey School Hong Kong

17 Tin Wan Street, Aberdeen, Hong Kong

Tel: 2129 7128

Email: admissions@was.edu.hk

Website: www.was.edu.hk

Year Founded: 2019

Curriculum: National Curriculum for England

Yew Chung International School (YCIS)

Secondary Section

3 To Fuk Road, Kowloon Tong

Primary Section (3 campuses)

• 2 Kent Road, Kowloon Tong

• 11 Kent Road, Kowloon Tong

• 22 Somerset Road, Kowloon Tong

• Early Childhood Education (5 campuses)

• 29 Kent Road, Kowloon Tong

• 151 Waterloo Road, Kowloon Tong

• 3 Somerset Road, Kowloon Tong

• 20 Somerset Road, Kowloon Tong

• Savannah Place, 3 Chi Shin Street, Tseung Kwan O

Tel: 2338 7106

Email: admissions@ycef.com

Website: www.ycis-hk.com

Year founded: 1932

Curriculum: International curriculum, IGCSE,

IB Diploma Programme

YMCA Christian Academy

70 Bridges Street, Sheung Wan, Hong Kong

Tel: 2537 2552

Email: admission@yca.edu.hk

Website: www.ymca.org.hk



YMCA of Hong Kong Christian College

2 Chung Yat Street, Tung Chung, Lantau

Tel: 2988 8123

Email: info@yhkcc.edu.hk

Website: www.yhkcc.edu.hk

Year founded: 2003

Curriculum: HKDSE, IGCSE, A-Levels

YMCA of Hong Kong Christian International Kindergarten

LG/F, 373 Po On Road, Cheung Sha Wan, Kowloon

Tel: 2281 6089

Email: christianikgwk@ymcahk.org.hk

Website: ymcahk.org.hk

Year founded: 2003

Curriculum: EYFS, Own

York International Pre-School (Hong Kong)

1/F & 2/F, Tsui King Court,

18 Water Street, Sai Ying Pun

Tel: 2368 7038

Website: www.york.edu.hk

York International Kindergarten

51 Cumberland Road, Kowloon Tong

Alliance Française de Hong Kong

1&2/F, 123 Hennessy Road, Wan Chai
Tel: 2527 7825
Email: wanchai@afhongkong.org
Website: www.afhongkong.org

British Council

3 Supreme Court Road, Admiralty
Tel: 3913 5100
Email: enquiries@britishcouncil.org.hk
Website: www.britishcouncil.hk

Camp Asia

25 Man Fuk Road, Ho Man Tin
Tel: 3467 4567
Email: info@campasia.hk

Capstone Prep Education Center

Secondary Section
 2/F, One Hysan Avenue, Causeway Bay, Hong Kong
Tel: 2893 6060
Email: info@capstoneprep.com
Website: www.capstoneprep.com

Centre of Learning and Life Enhancement Hong Kong Y.W.C.A.

3/F No 1 MacDonnell Road, Central
Tel: 3476 1345
Website: http://clle.ywca.org.hk/
Facebook: https://www.facebook.com/YWCA.CLLE

CICERO Study Solutions

Tel: 9850 4764
Email: info@cicero.com.hk
Website: www.cicero.com.hk

Eye Level Hong Kong

Unit 601, Island Place Tower,
 510 Kind's Road, North Point
Tel: 2104 0188
Email: hongkong@myeyelevel.com
Website: www.myeyelevel.com

GAPSK

Room 1803, 18/F, Hollywood Plaza,
 No. 610 Nathan Road, MongKok, Kowloon
Tel: 3101 0800
Email: info@gapsk.org
Website: www.gapsk.org

Genius Development Workshop and Sciencetech Future

Shop 401, 404, 406 & 412, Level 4, The Arcade,
 100 Cyberport Road, Hong Kong
Tel: 2338 9877
WhatsApp: 6351 8779
Kowloon Tong Campus
 No. 10 Somerset Road,
 Kowloon Tong, Hong Kong
Tel: 2180 9249
WhatsApp: 5395 4669
Websites:
<https://www.geniusdevelop.com/>
<https://www.scientechfuture.com/>

Goethe-Institut Hong Kong

14/F HK Arts Centre, 2 Harbour Road,
 Wanchai, Hong Kong
Tel: 2802 0088
Email: info-hongkong@goethe.de
Website: goethe.de

Hong Kong Golf & Tennis Academy

81 Tai Chung Hau, Sai Kung
Tel: 3187 8900
Email: enquiry@hkgta.com
Website: www.hkgta.com/

InNordics

Shop 111, Savannah Place, 3 Chi Shin Street, Tseung
 Kwan O, Hong Kong
Tel: 6083 3531
Email: info@innordics.com
Website: www.innordics.com

KUMON Education Centre

Room 3403-3408, 34/F, Chubb Tower, Windsor
 House, 311 Gloucester Road, Hong Kong
Tel: 2890 6533
Email: info@kumon.com.hk
Website: kumon.com.hk

Lee Educational Consulting

Unit 705, 7th Floor, Star House,
 No. 3 Salisbury Road, Tsim Sha Tsui
Mobile: 9416 0798
Wechat: ljasonkh
Website: www.leeeducation.com

LOHAS Rink

1 Lohas Park Road, Tseung Kwan O, NT
Tel: 2622 8400
Email: info@lohasrink.com.hk
Website: https://lohasrink.com.hk/

Mathconcept Learning Center

Park Central Shopping Arcade,
 Tseung Kwan O
Tel: 2796 3399
WhatsApp: 2788 1188
Website: www.mathconcept.com

Mini Mandarins Learning Centre

Causeway Bay Centre
 7/F, Capital Commercial Building,
 26 Leighton Road, Causeway Bay
Tel: 2320 1128
Email: info@minimandarins.com
Central Centre
 Room 1703 17/F Universal Trade Centre,
 No. 3-5A Arbutnot Road, Hong Kong
Tel: 2320 5208
Email: central@minimandarins.com
Website: www.minimandarins.com
Year founded: 2014

Monkey Tree English Learning Center (Head Office)

Room 2801, 28/F Citicorp Centre,
 18 Whitfield Road, Hong Kong
Tel: 3563 6771
Email: enquiry@monkeytree.com.hk
Website: www.monkeytree.com.hk

Novalearn

Unit 3, 16/F, W50,
 50 Wong Chuk Hang Road, Wong Chuk Hang
Tel: 2268 0084
Email: hello@novalearn.org
Website: www.novalearn.org

NTK Academic Group

Main Campus
 3-5/F & 7/F (Front office),
 Lee Garden Five, 18 Hysan Avenue, Causeway Bay
Tel: 2577 7844
Email: enquiry@ntk.edu.hk

Kowloon Campus

2/F, the Avery, 16 Hau Wong Road, Kowloon City
Tel: 2718 3000
Email: enquiry@ntk.edu.hk
Website: www.ntk.edu.hk
Year founded: 1996
Curriculum: SAT, AP, TOEFL, IB, IELTS

Specialist Education Advisory

Office 1401, 14/F Hermes Commercial center,
 4-4A Hillwood road, TST HK
Tel: 2569 5400
Whatsapp: 9174 7418
Email: info@specialistedu.com.hk

**Spanish World Leading Language Group**

404, 4/F Lap Fai Building,
 6-8 Pottinger Street, Central, Hong Kong
Tel: 2526 9927
Email: hk@spanishworldgroup.com
Website: www.spanishworld.hk

The Edge Learning Center

Causeway Bay
 2F, Zoroastrian Building,
 101 Leighton Road, Causeway Bay
Tel: 2972 2555
Email: info@theedge.com.hk
Website: www.theedge.com.hk

The Genius Workshop

Happy Valley Center
 Unit B, 1/F, Southern Pearl Court,
 151 Wong Nai Chung Road,
 Happy Valley, Hong Kong
Tel: 2591 0100

Taikoo Center

Unit 1001, Podium, Hang Sing Mansion,
 3 Tai Wing Avenue,
 Quarry Bay, Hong Kong
Tel: 2591 0009

Whampoa Center

Shop 25, G/F, Site 12, The Whampoa,
 Hung Hom, Kowloon
Tel: 3526 0701
WhatsApp: 6211 1968
Email: info@g-workshop.com
Website: http://www.g-workshop.com/



Stamford American
 SCHOOL HONG KONG



2025/26 APPLICATIONS OPEN APPLY NOW FOR PRIORITY

First-round applications close on Oct 31

Stamford offers an inspiring world of international education for students aged 5 to 18 using an inquiry-based learning approach combined with rigorous American academic standards. Graduates receive an American diploma and the option of the IB Diploma, both offering access to top universities worldwide.

Come and visit us to find out how our innovation approach will inspire your child.



Apply Now!

Stamford American School Hong Kong

25 Man Fuk Road, Ho Man Tin, Kowloon, Hong Kong

+852 2500 8688 admissions@sais.edu.hk www.sais.edu.hk



CHRISTIAN ALLIANCE
INTERNATIONAL SCHOOL
宣道國際學校

READY FOR THE FUTURE

Prepared for Life



Application Period for 2025/2026 Entry

Preparatory to Grade 1: Sept 1 to Oct 31, 2024

Grade 2 to 12 (Alberta Curriculum): Sept 1 to Dec 13, 2024

Grade 11 (IB Diploma Programme): Rolling Admissions

33 King Lam Street, Lai Chi Kok, Kowloon, Hong Kong
(852) 3699 3862, 3699 3863, 3699 3865
admissions@caisbv.edu.hk



www.caisbv.edu.hk



Our Prospectus

Accreditations:



Advanced Placement® and AP® are registered trademarks of the College Board and the National Merit Scholarship Corporation, which were not involved in the production of, and do not endorse, this publication.

Our mission is to cultivate learners with knowledge, skills, integrity and discernment, growing in love for God and service to humanity.