

# International Schools Guide



# HOTEL STYLE *living*

Indulge in a selection of accommodations, ranging from studios to well-appointed 3-bedroom suites. Immerse yourself in a world of unrivaled comfort, where you can enjoy a plethora of exclusive concierge services and amenities.

Serviced Suites and Residence · Flexible Staying Packages



  
**FOUR SEASONS**  
PLACE  
HONG KONG  
四季匯

📍 香港站 Hong Kong Station  
☎ +852 3196 8228  
📞 +852 9728 1886

**THE HARBOUR VIEW** 港景匯  
PLACE

at the ICC megalopolis

📍 九龍站 Kowloon Station  
☎ +852 3718 8000  
📞 +852 9661 7100



  
**VEGA**  
SUITES 星峰薈

📍 將軍澳站 Tseung Kwan O Station  
☎ +852 3963 7888  
📞 +852 9731 7188

**VICTORIA HARBOUR RESIDENCE** 海峽匯

📍 北角站 North Point Station  
☎ +852 2284 2988  
📞 +852 9661 8200







## Grooming students to face 21st century challenges

International schools play an important role in the overall education system in Hong Kong because they meet the rapidly rising aspirations and requirements of parents for a first-class education for their children.

Parents like what they see in their broader curriculum and well-researched teaching methodology, not to mention well-qualified and caring teachers. While their academic pursuits are no less rigorous, their approach focuses on quality as opposed to quantity. In the absence of overwhelming homework pressures, students have the time to develop such invaluable attributes as confidence, communication prowess, reasoning power, creativity, problem-solving skills, teamwork, empathy, self-discipline, and more.

While traditional schools concentrate on dishing out information en masse to complete a demanding syllabus, international schools provide the facilities, the environment, and the support for students, bringing out the best in individuals. Their inter-disciplinary approach with a STEAM focus also equips students to face the new challenges of the 21st century.

This guidebook contains updated information on international schools, and provides answers to questions to help you make the optimum choice for your children.



Features Editor



# Transform Their World

**Admissions Open for the 2024-25 and 2025-26 Academic Years.**



**MALVERN**  
COLLEGE HONG KONG  
香港墨爾文國際學校

3 Fo Chun Rd, Providence Bay

SAPIENS QUI PROSPICIT  
*Wise the one who looks ahead*

Apply Now



# Discover the Wonders of Malvern

**Admissions Open for the 2024-25 Academic Year.**



**MALVERN**  
COLLEGE PRE-SCHOOL  
HONG KONG  
香港墨爾文國際幼稚園

**Coronation Circle Campus**  
G09-12 Coronation Circle,  
1 Yau Cheung Rd, Yau Ma Tei

**Island West Campus**  
G/F and 1/F Viking Court,  
165-166 Connaught Road  
West, Sai Ying Pun

Apply Now





# Contents



2

Editor's Message  
Grooming students to face 21st century challenges

10

Anchors Academy  
Anchors Academy Affiliated International Kindergarten cum Nursery  
A Modern 4-literacy approach to 21st Century Learning

12

Top Schools  
Our Proven 'Finding the Fit Formula' to eliminate 80% of the risk and apply to just THREE schools to get ONE offer

14

YWCA International Kids Club  
Unleash Your Child's Potential This Spring at YWCA!

16

Malvern College Hong Kong  
An Education of Heart and Mind

18

Korean International School  
Korean International School ushers in a new chapter in its robust development

20

The ISF Academy  
Cultivating critical thinkers with the passion to learn

22

Wycombe Abbey School Hong Kong  
Wycombe Abbey School Hong Kong Students Embark on Remarkable Journeys to Prestigious UK Schools, including Eton College and Badminton

24

American International School  
A School That Builds Confidence



The Standard

"International Schools Guide" is published by The Standard



**Display Advertising Department**  
3/F., Sing Tao News Corporation Building,  
7 Chun Cheong Street, Tseung Kwan O Industrial Estate,  
Tseung Kwan O, New Territories, Hong Kong

**Advertising Hotline:** (852) 3181 3311  
**Fax:** 2758 3579

All rights reserved.

**Features Editor:** Andy Ng  
**Designer:** Yannes Lee  
**Business Director:** Irene Chan  
**Website:** www.thestandard.com.hk  
**Email:** advertise@thestandard.com.hk



At Hong Kong International School, we learn with **compassion**, solve with **inquiry**, and serve with **courage** to shape a remarkable future.



Learn More.



admissions@hkis.edu.hk

www.hkis.edu.hk



# Contents



**26**

Bloom KKCA Academy  
A Bilingual School of Innovation

**28**

Christian Alliance International School  
Preparing students for success beyond the classroom

**30**

Carmel School  
An Education Designed for the Future at Carmel School Hong Kong

**32**

Christian Alliance P.C. Lau Memorial International School  
Elevating the curricula of STEM to STREAM

**34**

English Schools Foundation  
A World Class International Education For Your Child

**36**

Hong Kong Academy  
Accreditation Matters

**38**

Hong Kong International School  
In Service to Humanity

**40**

Invictus School Hong Kong  
A 15-year international programme that nurtures innovative lifelong learners

**42**

The Harbour School  
Adventures in Learning at The Harbour School



SIGNATURE HOMES  
— RESIDENTIAL LEASING —



Pacific View

## RESIDENCE FOR LEASE

Mid-Levels · Island South · The Peak · Other Urban Areas

Discover a selection of quality properties in over 35 prime locations near the catchment areas of international schools with easy access to exceptional educational opportunities. Our residences offer unrivaled convenience and attentive services that go beyond to create the Signature of Luxury Living.



Old Peak Mansion

Hillsborough Court

127 Repulse Bay Road

Furnished Option Available

Explore more availabilities: ☎ 9228 2931



[www.signaturehomes.com.hk](http://www.signaturehomes.com.hk)



[signaturehomeshk](#)



[SignatureHomes\\_HK](#)



Sun Hung Kai Properties



# Contents



44

Ontario eSchool  
Get Admissions into Top Universities with Our Professional Study Planning

46

Nord Anglia International School Hong Kong  
Thinking beyond traditional education to transform learning

48

Shrewsbury International School Hong Kong  
Premium British Primary School

50

Lou Pichoun École Maternelle Française Internationale Hong Kong  
Trilingual Environment: French, English and Chinese  
Small and Personalized Class

52

Fairchild Junior Academy / Fairchild Kindergarten  
Fairchild: Reggio Emilia Builds Creativity Through Play, Play and more Play!

54

Maple Bear Canadian International Kindergarten Hong Kong  
Brings the best of Canadian bilingual education to prepare students to succeed in their lifetime

57

Directory



安基司學校  
安基司學校附屬國際幼稚園暨幼兒園

Anchors Academy  
Anchors Academy Affiliated International Kindergarten cum Nursery

School license number  
PS: 622079 KG: 622060



## Anchors Academy gathers STEAM

A 4–Literacy approach provides the skills to flourish in the 21st Century

### Primary

- UK National Curriculum, HK/Singapore Maths and Hong Kong Chinese (Putonghua and Traditional Characters)
- Advanced and Innovative STEAM & Digital ICT curricula
- Excellent Extra–curricula and Afterschool Activities Programmes
- VR/AR Innovation Labs and State–of–the Art Facilities

Primary Admissions



### International Kindergarten cum Nursery

- UK EYFS Curriculum and Hong Kong Chinese (Putonghua and Traditional Characters)
- Learn through Play methodology
- Excellent Extra–curricula Programmes
- Innovation Lab, Music and Art Rooms, State–of–the Art Facilities

International Kindergarten and Pre–Nursery Admissions



Anchors Academy Affiliated International Kindergarten cum Nursery

Admission Hotline: 3860 5655

**Class**  
Pre–Nursery  
K1(AM/PM Class)  
K2–K3(AM/PM, Whole day class)  
**Tuition fee (2023–24)**  
Half Day Class \$96,000 (With 10 installments)  
Whole Day Class \$138,000 (With 10 installments)

Anchors Academy

Admission Hotline: 3860 5605

**Class**  
Y1–Y3 (Year 2024/25)  
**Tuition fee (2023–24)**  
\$138,000 (With 10 installments)  
**Annual Capital Levy (2023–24)**  
\$24,000 (with 10 installments)

Book a School Tour



Address

1 Ko Po Path, Kam Tin North, Yuen Long, New Territories, Hong Kong





# A Modern 4-literacy approach to 21st Century Learning

## A Through-Train School of Innovation

On the picturesque banks of the Kam Tin River, Anchors Academy's state-of-the-art 150,000m<sup>2</sup> campus hosts one of Hong Kong's most modern and innovative schools featuring its own indoor Swimming Pool, Multipurpose Sports grounds, modern classrooms, 2 VR innovation labs, and specialist subject-specific facilities for Music, the Arts, STEAM and Digital Technology.

With an established Pre-Nursery, Kindergarten, Primary School, and the development of another exceptional Secondary School campus around the corner, Anchors Academy can provide a one-stop destination for parents looking to instil attributes and skills to tackle the demands of the 21st century.

## Primary School Curriculum and 4-Literacy Approach

Anchors Academy offers a unique 4-literacy approach to learning with a strong emphasis on English Literacy, Chinese Literacy, STEAM and Digital Literacy.

Combining the best of International and local Curricula using the UK national curriculum, Hong Kong Chinese (Putonghua with traditional characters), the Singapore approach to mathematics and an advanced school-based STEAM and Digital ICT Curriculum, we can ensure students acquire excellent 21st-century skills to tackle an ever-growing technological and globalised world.



## STEAM & Digital Literacy

With an excellent team of digitally astute educators and specialist STEAM teachers, we can integrate STEAM and Digital education across curriculum. Our students have diverse opportunities to learn through exploration and project-based learning, and students from a young age can master computation, digital systems, and programming as they create content in a range of mediums, including coding, animation, video, and VR/AR.

## An Ethos and Values-driven Education

In addition to academic endeavours, we stress huge importance on whole person development and our ANCHORS values are infused into every aspect of our school so that we remain committed to our mission and vision of fostering a compassionate community, that contributes positively to both Hong Kong society and the wider world.

- A**ct with Integrity
- N**urturing
- C**ommunication and Confidence
- H**ealth and Happiness
- O**ptimism and Opportunity
- R**espect and Responsibility
- S**ervice to the Community

## Extra-Curricular and After School Activities

To enhance students' learning experiences, our school provides excellent learning opportunities with our comprehensive extracurricular and after-school programmes to develop key areas of student development under the following categories: Academic & Logical Development, Technology & Digital Intelligence, Sports & Athletics, Music & Visual Arts, Student Voice and Leadership, and Community Service, Charity, and Sustainability.



## Overseas Excursions, School Trips and Life-Wide Learning

As part of our curriculum, our school regularly exposes all our students to the world around us through school trips, excursions, and life-wide learning experiences. These activities broaden their horizons and provide valuable opportunities for learning beyond the classroom. As students grow through the school, students will also have regular opportunities to travel overseas for a variety of sports, language cultural exchanges and much more.



## Kindergarten Curriculum

Anchors Academy Affiliated International Kindergarten cum Nursery, adopts the UK Early Years Foundation Stage (EYFS) curriculum with the methodology of "Learn through Play". Students learn through hands-on experiences following a thematic approach in learning. STEAM is embedded within Anchors curriculum with students gaining knowledge and understanding through regular visits to the Innovation Lab and their time at the STEAM wall.

## Admissions – Accepting Applications for 2024/25

### Primary



### International Kindergarten



## Anchors Academy and Anchors Academy Affiliated International Kindergarten cum Nursery

1 Ko Po Path, Kam Tin North  
Yuen Long

**Tel:** 3860 5605

**Email:** AAPSinfo@anchorsacademy.edu.hk  
AAKGinfo@anchorsacademy.edu.hk

**Website:** www.anchorsacademy.edu.hk

**Facebook & Instagram:** Anchors Academy





# Our Proven 'Finding the Fit Formula' to eliminate 80% of the risk and apply to just THREE schools to get ONE offer

Are you feeling that getting your child a spot in their best-fit international school is complicated, competitive and costly?

Have you been applying to schools and seem to be hitting a brick wall? You choose schools that seems to meet your needs and, yet, no offers?



### Is that you?

You're not alone. We've been supporting parents in Hong Kong to be successful in school admissions since 2012. So, I do have the solution...

### SIX Proven Steps to Get into the Best Fit School

- 1. Confirm your Criteria  
Too often, parents forget what they want and feel that they need to settle for something else. If you take time to confirm your criteria at the start, you'll be more likely to stick to what fits.
- 2. Clarify your Child's Ability  
You want to be as certain as possible that, once you submit an application and your child is invited for an assessment, your child will pass. To get that far and then get a 'No' can be devastating. So a short test is a good idea.
- 3. Compile your Smart Shortlist  
Once you are clear on your criteria AND your child's ability, you are ready to research which schools fit and which ones are likely to have space when you need it.
- 4. Check with the Schools  
You'll want to be sure you understand the admissions and assessment process completely for the schools you're interested in. If you're applying for a year without additional places, you'll want to ascertain your child's chances too.

- 5. Complete the Application  
This should be the easy bit! Submitting a complete and correct application is not always as straightforward as it may seem, especially when essay questions are required. Ensure your application is as strong as it can be.
- 6. Confidently prepare for Assessment  
A little preparation goes a long way. NOT lots of tutoring, but some targeted practice where it's needed so that your child feels confident on the day and you know you've done all you can.

These SIX steps are included in our signature program - Successful School Admissions - in our 'Finding the Fit' Formula, our proven process. This is how we eliminate 80% of the risk and apply to just THREE schools to get ONE offer.



Join a FREE Masterclass with Ruth | Register at [www.topschooolsadmissions.com/training](http://www.topschooolsadmissions.com/training)

Spend THREE hours with me. I'll take you through the process I've been using to support my VIP clients.

I have walked this talk with my own children and supported thousands of parents just like you since 2012. This is NOT an application factory ("Spray & Pray"); this is not admin; it's STRATEGY that works. Would you like a strategy that just works?

No more spending hours researching online and compiling beautiful spreadsheets, visiting umpteen schools only to arrive at disappointment.

### Save time, money & worry

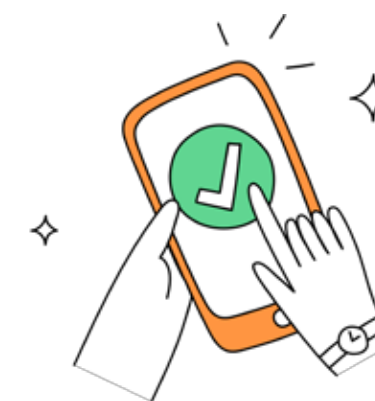
This is for you if you are genuinely ready to Find the Fit for your child and seeking a preschool, primary or secondary place in 2025 or 2026.

On Day 1, you'll make the ONE key decision you need to make early.

On Day 2, you'll learn how to apply the proven process to create a smart shortlist

On Day 3, you'll create an Assessment Action Plan.

Scan here to get signed up for the event



Learn more about Top Schools here: <https://topschoools.link/Our-socials>





# Unleash Your Child's Potential This Spring at YWCA!



In the bustling heart of Central at 1 MacDonnell Road, the YWCA International Kids Club (IKC) is more than just a learning centre; it is a one-stop portal to a world where children's potential is awakened and nourished. We provide a unique blend of educational programmes and Easter camps that address all aspects of your child's development in a safe, comfortable, and engaging environment.

### Diverse and Engaging Programmes

IKC is a one-stop hub that offers a wide range of programmes, including languages, music, robotics, and coding, as well as sports and martial arts. Our curricula are carefully crafted to accommodate each child's unique learning methods and interests. Whether improving academic skills, encouraging creativity, or encouraging physical fitness, we have something that will ignite every child's interest and enthusiasm.



### Customisable Learning Experiences

We believe in the power of choice. Our flexible scheduling allows you to design a learning experience ideally tailored to your child's needs. Our classes cover everything from interactive playgroups and phonics to creative arts, ballet, and even coding and chess, ensuring a well-rounded education.

### Join Our Global Learning Community

At IKC, we are more than just a learning centre; we are a lively international community that fosters cultural understanding and global thinking. Our inclusive approach not only improves the educational experience but also prepares your child for life in a globally connected world.

### Ready to Start Your Adventure?

Don't miss out on enriching your child's year with our spring term courses and Easter Camp activities. Enrol now and be a part of a journey that combines academic advancement with holiday pleasure all in one place.

Don't hesitate! Visit <https://bit.ly/3OnrkHk> today to discover more about our spring term and Easter Camp offerings and to guarantee your child's spot in our vibrant learning community. Let's make this spring a season of growth and discovery at IKC.



### Enrol Today and Watch Your Child Flourish at YWCA!

**How Much:** Starting price from HKD\$230 - please check the website for details

**Where:** YWCA International Kids Club  
3/F, No. 1 Macdonnell Road, Mid-Levels, Hong Kong

**Tel:** +852 3476 1340

**Email:** [clle@ywca.org.hk](mailto:clle@ywca.org.hk)

**Website:** [clle.ywca.org.hk](http://clle.ywca.org.hk)



女青活學中心  
Centre of Learning and  
Life Enhancement

# JAN - APR

## Welcome to

# Spring Term

## ENROLL NOW



Playground for Learning

# YWCA International Kids Club



6367 0304



YWCA.CCLE



3476 1340



[clle@ywca.org.hk](mailto:clle@ywca.org.hk)





# An Education of Heart and Mind

Malvern College Hong Kong (MCHK) draws upon the rich heritage and ethos of Malvern College UK, a co-educational day and boarding school founded in 1865. MCHK is an IB World School offering the Primary Years Programme (PYP) and Middle Years Programme (MYP) for its culturally diverse pupil body. Its state-of-the-art campus is located in Pak Shek Kok, New Territories, adjacent to the Hong Kong Science Park.

### Academic Success

MCHK's first cohort of Diploma students graduated in May 2023 with outstanding results, achieving average

scores of 39.4 points, significantly above the world average of 30.24. An impressive 50% of pupils scored 40 or more, and 50% of pupils also earned the Bilingual Diploma. Our graduates secured places at leading universities across the globe including, Imperial College London, The University of Hong Kong, The University of Toronto, The University of California Davis, and Edinburgh University, and received over 3.1 million HKD in scholarships. Academic success was also demonstrated by our Year 11 (or "Hundred" in Malvern language) cohort, who achieved a 99.5% pass rate in the MYP assessments, with 60% of pupils scoring 45 points or more.



### Five Centres of Excellence

Malvern's unique educational ethos is built around the "Five Centres of Excellence": British-style pastoral care, enhanced learning, entrepreneurial education, outdoor and environmental education, and a global network of Malvern schools around the world. Pupils are nurtured to become truly open-minded, global citizens who are respectful of other cultures and views whilst being capable of collaboration and building consensus.



### Personalised Learning & Pastoral Care

Small class sizes give teachers the chance to engage with all pupils individually and differentiate according to ability, skill set and need within lessons. Dedicated tutor-time and a genuine concern for the individual are additional key features. The school's strong pastoral care builds upon an active house system where a sense of community is fostered through house events like sports or performing arts competitions as well as community dining.

### Co-curricular Activities and Enrichment Programmes

Strongly committed to holistic education, Malvern offers an extensive co-curricular activities programme to pupils across all year groups. A wide variety of enrichment programmes like the Forest-Beach School Programme, Gifted & Talented Mentorship and Leadership Development Programme provide further opportunities for academic and personal growth.



### Malvern College Hong Kong

3 Fo Chun Road, Pak Shek Kok, New Territories, Hong Kong

Tel: 3898 4688

Email: admissions@malverncollege.org.hk

Website: www.malverncollege.org.hk





# Korean International School ushers in a new chapter in its robust development



2024 marks a special year for Korean International School (KIS) as it celebrates its 30th anniversary. As an integral part of its community engagement, the school held an Open Day Fair on March 2.

The Standard spoke with Daniel Hilton, Principal of the International Section at Korean International School, who explained how KIS, a well-regarded private and independent international school in Hong Kong, is committed to providing every one of its students with an outstanding education and an all-round learning experience.

### A choice of curriculum options

For approximately 800 students representing more than 30 nationalities, and aged from 4 to 18, the school has, since its establishment in 1994, provided a top-notch education through two separate streams - the Korean Basic Curriculum in Korean (Korean Section) and the British Curriculum in English (International Section).

The international section of the Korean International School strives to create an environment that fosters an enthusiasm for learning with a choice of curriculum options



that fits individual preference. "In addition to the many mainstream International General Certificate of Secondary Education (IGCSE) and A level courses you may expect a

school to offer, we regularly add new iGCSE, A-Level and BTEC courses to reflect changing student interests," Hilton says.

He points out that the curriculum is based on and teaches beyond the National Curriculum for England, providing students with both a local and international perspective. The tight benchmarking means the curriculum is highly transferable and widely recognized throughout the English-speaking world.

### Exploring broader interests

Referring to the power of following one's passion, Hilton points out that "What we have here is the flexibility available and the fact that you have a free choice by the time you reach the end of your study."

He advises students to give themselves time and space to explore their broader interests throughout their studies. He takes the A-Level curriculum as an illustration: "This program's primary benefit is freedom of choice. You do not need to study math if math is not your thing. However, double math and physics are doable if you enjoy math."

### Emphasis on extracurricular activities

Besides the extensive and well-rounded curriculum, KIS believes that extracurricular activities play a significant role in every student's life because they contribute to their intellectual, social, cultural and emotional growth.

"I challenge the children to come up with what they want," Hilton remarks. "Attending extracurricular activities allows young people to express themselves and forge closer links with the wider community."

"You can define a role for yourself in the future by combining your academic strengths with your extracurricular passion and your set of values, if you know a little about yourself," he continues.

### Commitment to developing well-rounded students



In addition to offering top-notch education, the school is committed to nurturing well-rounded individuals capable of succeeding in a constantly changing world. "We recognize, for example, that technology plays a crucial role in shaping the future, and we make sure our students have the tools

and skills they need to thrive," says Hilton.

"Academic outcomes are important, but so is the cultivation of a well-rounded personality," Hilton explains. "At KIS, we strive to create a caring and supportive environment that enables students to live up to our mission statement of Find Passion, Foster Vision and Encourage Action."

"Experiences like traveling abroad or attending a theater with friends are what you remember more than a math lesson on Friday afternoon," he elaborates. "You won't recall the details in thirty years, but you will remember being a part of that production."

"I hope that through having these rich experiences, students may find those things that become their hobbies or passions in life," he adds.

### Weaving a close-knit community

Hilton emphasizes the importance of multilateral communication.

"If a child wants to study, say, music and art, but the parent wants the child to study math and economics instead, this is where an education specialist comes in to speak up for the child, analyse the opportunities available, and offer their expertise," he explains. "We have exceptional teachers and staff who can effectively motivate students and guide them in the right trajectory."

"Our school is a place where families, teachers, and students come together to share their views and work on the best outcome," Hilton concludes. "We believe a strong community is essential to the success of our students, and in helping them become the best possible version of themselves."



### Korean International School

55 Lei King Road, Sai Wan Ho, Hong Kong

Tel: 2569 5500

Email: enquiry@kis.edu.hk

Website: www.kis.edu.hk





# Cultivating critical thinkers with the passion to learn

The Independent Schools Foundation Academy (The ISF Academy) is a not-for-profit private independent primary and secondary school providing a unique inquiry-based Chinese and English bilingual immersion education. We are a Chinese school with a global perspective.

We believe that learning is the active construction of knowledge best experienced through meaningful activities that foster exploration and creativity. An ISF education emphasizes probing discussions, passionate debates and critical thinking. ISF students are cheerful high achievers who exude a joy of learning that drives their development as culturally agile and confident communicators who possess the social, creative and analytical thinking skills necessary to succeed and thrive in a complex world.

We are a strong proponent of learning by doing. Our

hallmark Experiential Learning Program features unfamiliar settings and novel challenges that build character and confidence. An ISF learner is at home building dormitories in Laos, researching ancient texts in Cambridge or exploring the rich history of the Silk Road.

We are an accredited International Baccalaureate (IB) World School. The last three years has seen 188 students taking the IB Diploma exams and achieving an average score of 40 out of a possible 45, enabling our graduates to receive offers from leading universities all around the world.



### ► Personalized University Counseling

Our systematic and personalized university guidance and careers program spans from Grade 9 to 12 and allows our students to make informed decisions about their DP subject choices and subsequent university applications.



### ► Bilingual Diploma and Bilingual Theory of Knowledge

From our very first graduating class, we have had a 100% IB Diploma success rate with at least two thirds of our students each year being awarded the coveted Bilingual IB Diploma. Students also receive Theory of Knowledge instruction in both English and Chinese and may choose either language for their written paper.

### ► Exclusive Leadership and Experiential Learning Programs

Our Virtue and House structures in primary and secondary respectively, together with our Experiential Learning Programs, nurture our students' development as excellent communicators and leaders that empower them to serve as responsible global stewards of tomorrow.



### University Offers in the Last Three Years include (by alphabetical order):

**Canada:** McGill University, The University of British Columbia, University of Toronto

**Hong Kong:** Hong Kong University of Science and Technology, The Chinese University of Hong Kong, The University of Hong Kong

**U.K.:** Durham University, Imperial College London, London School of Economics and Political Science, Royal Academy of Music, University of Cambridge, University of Oxford, University of St Andrews

**U.S.A.:** Brown University, Columbia University, Cornell University, Dartmouth College, Harvard College, Johns Hopkins University, Parsons New School of Design, Pomona College, Princeton University, Stanford University, University of California (Berkeley), University of California (Los Angeles), University of Pennsylvania

Rolling Applications for 2024-25 for selected grades will open on April 12, 2024. Applications for all grades for 2025-26 will open on August 1, 2024. Please visit the Admissions News on our website for more information.



### The Admissions Office

1 Kong Sin Wan Road, Pokfulam, Hong Kong  
Tel: 2202 2028

Email: admissions@isf.edu.hk

Website: academy.isf.edu.hk



Scholarships and Financial Aid Available





## Wycombe Abbey School Hong Kong Students Embark on Remarkable Journeys to Prestigious UK Schools, including Eton College and Badminton

Students at Wycombe Abbey School Hong Kong are making remarkable choices for their academic futures, choosing esteemed schools across the United Kingdom for their secondary school careers. In the coming academic year, graduates will be attending prestigious institutions such as Eton College, Abingdon, Ardingly, Westonbirt, Woldingham, Rugby School, Handcross Park, Winchester, Mayfield, Badminton, and RHS Bath. The school is honoured to be nurturing and guiding students in years 6 and 8 as they prepare for their boarding school journeys at these prestigious schools.

Each of these schools is known for its commitment to academic excellence, outstanding facilities, and nurturing environments, and will provide Wycombe Abbey School Hong Kong graduates with a diverse range of choices and opportunities to pursue their passions and excel academically in an international setting.

“This young school already has a proud heritage of sending pupils to the finest boarding schools in the United Kingdom. As a traditional British Prep School in Hong Kong, (Year 1-Year 8), we are specifically designed to prepare those students who wish to go for entry to the very best British Independent schools. Whilst we are a part of the Wycombe Abbey family, and some of our girls have gone to take up their places at Wycombe Abbey in England, we offer a far broader provision, which allows each pupil to be matched with the perfect British boarding school for them. There are several hundred outstanding schools to choose from. This 23/24 academic year alone we have applications to thirty different British independent schools. At this early stage of the year, (February), we have already received 23 offers. Please do contact us to arrange a time to chat with me about how we can offer our parents and students this outstanding built-in service”, says Howard Tuckett, Headmaster.



Wycombe Abbey School Hong Kong offers a comprehensive Boarding & Secondary School Guidance Programme, led by the Headmaster and a team of expert mentors. This step-by-step programme is tailored to each pupil and family, assisting them in exploring, investigating, and researching potential secondary boarding schools worldwide, from prestigious schools in the United Kingdom to top secondary schools in Hong Kong. The aim is to create a viable shortlist of schools that best suit each pupil's unique requirements.



The programme also provides support and guidance to help students prepare for entry into their chosen schools. It identifies individual needs and offers additional academic preparation, such as foreign language studies, and skills training where required. Moreover, it equips students with the broader personal and social skills necessary to thrive in their preferred school. For those requiring boarding, the programme also helps students, and their families, prepare for this transition.



With the exceptional support provided by Wycombe Abbey School Hong Kong, it is anticipated that there will be more exciting paths chosen to top UK schools as the year progresses.

### Wycombe Abbey School Hong Kong

17 Tin Wan Street, Tin Wan, Aberdeen, Hong Kong  
 Tel: 2129 7128  
 Email: [admissions@was.edu.hk](mailto:admissions@was.edu.hk)  
 Website: [www.was.edu.hk](http://www.was.edu.hk)



Eton College



Badminton School



Wycombe Abbey UK



Benenden School





# A School That Builds Confidence



Band Slam, talent shows, drama performances, art shows, and so much more.

By harnessing the power of Apple technology, we empower our students with the **Creative Confidence** they need to move beyond **consuming** information, to **creating** new content and ideas to share with the world. Our commitment to inspiring innovation and creativity is strong, and an education at AIS ensures that our graduates have unique opportunities and specialized skills that few other students can claim.

From Early Childhood to Grade 12, AIS delivers an affordable and comprehensive program that develops students academically, socially, and personally. Our graduates are ready to face the world with confidence and optimism and prepared to make a positive difference in the lives of others. Come and see the difference that an education at AIS makes.

Centrally located in Kowloon Tong, the American International School has been providing a rigorous academic program to local and international students since 1986. Each year, AIS graduates are accepted to prestigious universities in the United States, Hong Kong, and around the world. AIS boasts a family-centered, close-knit school community where students, parents, and teachers share a collective sense of belonging and purpose. The school is organized into three divisions – Elementary, Middle, and High – and serves a student population of approximately 750 students from Early Childhood to Grade 12. The school is fully accredited by the Western Association of Schools and Colleges (WASC) in the United States and has been for over 30 years.



AIS' founding Core Values of **Justice, Knowledge, and Love** remain the hallmark of an AIS education. Our Expected School-wide Learning Results, or ESLRs, articulate what all students should know, understand, and be able to do as **Empowered Thinkers, Effective Communicators, Well-rounded Individuals, and Global Citizens**. Our **Social, Personal, and Applied Learning Model** is supported by our Essential Practices, key learning strategies used in every class, from Early Childhood to Grade 12. Above all, AIS builds student **Confidence**, the key outcome of our **Future Framework**.

Our challenging academic program is enriched by broad and highly diverse extra-curricular offerings, vibrant visual and performing arts opportunities, an extensive intramural and varsity sports program, unique experiential learning opportunities, challenging leadership programs, dedicated community service, and a schoolwide commitment to supporting student success. Families can also join in the fun at regular events throughout the year, including Winter Fair,



## American International School

125 Waterloo Rd, Kowloon Tong  
Tel: 2336 3812  
Email: [admissions@ais.edu.hk](mailto:admissions@ais.edu.hk)  
Website: [www.ais.edu.hk](http://www.ais.edu.hk)



# AMERICAN INTERNATIONAL SCHOOL



## LIMITED SPACES

for the 2024/25 Academic Year

EMAIL US AT [admissions@ais.edu.hk](mailto:admissions@ais.edu.hk)





# Bloom KKCA Academy A Bilingual School of Innovation



Our school is built with an eye toward the future. Founded by educators, entrepreneurs, and engineers, Bloom Academy provides an innovative G1-12 bilingual, project-based education.

### Bilingual and Multicultural

We integrate both Chinese and English into different subjects from math to art as well as our daily campfires, projects, and field trips. The 50 / 50 split reinforces our respect for all cultures and communities and gives our students ample opportunity to function comfortably, competently, and confidently in both languages.

### World-Class STEM Education

Unlike a traditional STEM classroom, where science experiments are pre-designed, Bloom KKCA Academy focuses on the design of the experiment itself. The STEM Program draws from the Next Generation Science Standards (NGSS), a research-based curriculum developed and designed by Nobel Laureates along with a team of education professionals.

### Positive Education

In our program, wellbeing, the individual, self-awareness, self-expression, and citizenship are part of our DNA so that students, faculty, and staff can flourish. Daily campfires and low student-teacher ratios allow us to check in with one another and focus on the whole child. Our weekly excursions also promote our students' connection to the city and the planet. This regular interaction with the wider community instills a sense of belonging and provides opportunity for positive values to be translated into caring actions.

### Weekly Field Trips

Our campus extends far beyond the classroom. Bloom students embark on weekly field trips, from organic farms to science experiments at the Aberdeen Reservoirs. Students make sense of what they have learned in the classroom out

in the real world and bring questions, observations that motivate them to pursue learning within the classroom.

### Secondary School

Saint Too Bloom Academy, our upcoming secondary school expected to open in September 2024, is proud to offer a leading Entrepreneurship Program in Hong Kong. This innovative program is designed to equip students with the mindset and skills necessary for entrepreneurial success while inspiring them to take purposeful action.



### Bloom KKCA Academy

Tel: 2311 2268

Email: [admissions@bloom.edu.hk](mailto:admissions@bloom.edu.hk)

Website: [www.bloom.edu.hk](http://www.bloom.edu.hk)

### Saint Too Bloom Academy

Tel: 2311 2268

Email: [admissions@bloom.edu.hk](mailto:admissions@bloom.edu.hk)

Website: [www.secondary.bloom.edu.hk](http://www.secondary.bloom.edu.hk)

(Registration License Pending EDB Approval)

For Ages  
適合年齡 5-12



# OPEN DAY

Sessions Dates:  
(Sat) 10am - 12nn

Mar 16	3月16日
Apr 20	4月20日
May 18	5月18日
Jun 8	6月8日

Sustainable workshop  
可持續性工作坊  
Campus Tour  
校園參觀



E XPLORE C REATE S Hare  
「探索 創造 分享」



MEET US!  
與我們見面!





# Preparing students for success beyond the classroom



At Christian Alliance International School (CAIS), there is an emphasis on celebrating students' success beyond the classroom. Head of School of CAIS, Richard Vanderpyl says, "We not only recognize academic achievements, but the exemplary work, service, dedication and achievements of individual students that are exemplifying the CAIS culture of excellence and demonstrating Christ-like character."



With a focus on holistic development, CAIS offers a variety of student clubs and extracurricular activities. With over 1,600 students from preparatory to grade 12, the school currently provides 34 student clubs and 47 sports teams, where students can continually grow and develop skills beyond the classroom. Scholarships are available to newly enrolled students based on academic performance, achievements in music, drama, art, sports, and commitment to service and leadership.

In addition, CAIS encourages students to take up leadership positions within the school community, such as becoming student ambassadors, house captains, or joining the student council and student representative council. By integrating leadership programs, service opportunities and spiritual growth, CAIS aims to cultivate well-rounded individuals who not only excel academically but also possess the soft skills and qualities of effective leaders. With a house

system running from primary through high school, students learn to work together and build a sense of unity through various activities held during the school year.

The school extends its curriculum beyond the school campus so that children can expand their horizons and grow in their understanding of the world through acts of service. Upper primary school students have the opportunity to challenge themselves and build community at overnight camps. In high school, students take part in the Discovery Days program, with a variety of service projects locally and abroad, allowing them to practice the school's core values of love, wisdom, integrity, service, and community. Every year, the United Nations Week is a major event at CAIS, focusing on celebrating different cultures and understanding the sustainable development goals of the United Nations.



Through service, students embrace the chance to make a difference and develop their potential to become global citizens. Vanderpyl explains, "Our vision is to nurture students' academic ability alongside their character, which is being kind and compassionate towards other people, a willingness to serve and have good spiritual development—those are what will make a difference to the community, and the world."

## Christian Alliance International School

33 King Lam Street, Lai Chi Kok, Kowloon, HK  
Tel: (852)3699 3862 / 3699 3863 / 3699 3865  
Email: admissions@caisbv.edu.hk  
Website: www.caisbv.edu.hk



# Scholarship Awards for New Students



The Christian Alliance International School scholarship scheme aims to offer continuous support for families with specific needs, as well as to serve as an encouragement and recognition of students' effort to excel in academics, and their dedication in pursuing extra-curricular accomplishments.

Scholarships are awarded to newly enrolled students (Grades 7 to 11) for the duration of their time at CAIS. Selection is based on demonstrated academic performance, achievements in music, drama, art, sporting prowess, and commitment to service and leadership.

### Categories:

Academic Scholarship / Cultural Scholarship / IB Scholarship / Sporting Scholarship

Contact our Admissions Team to explore a uniquely transformative educational experience

33 King Lam Street, Lai Chi Kok, Kowloon, Hong Kong  
(852) 3699 3862, 3699 3863, 3699 3865  
admissions@caisbv.edu.hk www.caisbv.edu.hk





# An Education Designed for the Future at Carmel School Hong Kong

At Carmel School we champion achievement, foster intellectual curiosity, and empower compassionate leaders to drive positive change in the world around them.



Carmel School is an inclusive Jewish international school committed to academic excellence. Our personalized approach, with emphasis on growing caring, compassionate, global citizens, produces independent thinkers and communicators who will become leaders and contribute to the wider world.

Along with a 4:1 student:teacher ratio and a personalized curriculum delivery that caters for a range of learning styles, the School provides a supportive, caring environment that develops confidence, imagination and skills across all academic and extracurricular areas.



### Our STEAM extension programmes

We offer the globally recognized IB curriculum with a focus on personalized learning and holistic growth, and we see success from our one year old early learners through to our 18 year old IB Diploma graduates. We seek to embrace the best of innovation & technology, while nurturing entrepreneurial leaders, preparing our students for the future by providing them with the tools and resources they need to thrive. Creativity, critical thinking and problem solving skills empower our students to grow resilience and an ability to adapt to the future.

Combining STEAM subjects into cross-subject modalities, starting with a structured early years curriculum encourages curiosity in these subjects. We provide dedicated makerspaces, fully equipped robotics labs, and 'Upcycle', a unique heavy-duty facility equipped for plastics recycling from collection and processing to design and manufacturing, all purpose built to foster these skills.

### Graduate Pathways

Carmel School graduates produce consistently strong academic results. Our Class of 2023 achieved an excellent overall cohort average of 37.3 out of 45 points, placing us in the top 10 in Hong Kong and top 40 in the world. Our graduates have gone on to study at top tertiary institutions around the world including University of Cambridge, McGill University, HKU, University of Toronto, The University of Melbourne, UCLA and Technion - Israel Institute of Technology.



### Carmel School

#### Holly Rofé Early Learning campus:

70 Robinson Road, Mid-Levels

#### Carmel Elementary campus:

10 Borrett Road, Mid-Levels

#### Elsa High School campus:

460 Shau Kei Wan Road, Shau Kei Wan

Tel: 3665 5388

Email: admissions@carmel.edu.hk

Website: www.carmel.edu.hk



# A Future-Proof Education

## IB Continuum School (PYP, MYP & DP)

Holly Rofé Early Learning Centre (Mid Levels)

Carmel Elementary Campus (Mid Levels)

Elsa High School Campus (Shau Kei Wan)

[www.carmel.edu.hk](http://www.carmel.edu.hk)



Book a tour  
[carmel.edu.hk/tour](http://carmel.edu.hk/tour)





# Elevating the curricula of STEM to STREAM



STEM (science, technology, engineering, and mathematics) education has rapidly expanded over the past decade as nations worldwide recognize the need to cultivate skills for the jobs of tomorrow. But Christian Alliance P.C. Lau Memorial International School (CAPCL) has taken it a step further with its introduction of STREAM.

Dr. Cora Hui, Head of School at CAPCL, and Vicky Wong, STREAM coordinator at CAPCL, share insights into their pioneering STREAM program and vision for 21st-century learning.

Under a co-homeroom system practiced at CAPCL, where a classroom is led by a Western and a Chinese teacher, project-based learning seamlessly blends STREAM concepts across subject areas based on the Canada Alberta Curriculum framework. "CAPCL's ambition is to lead in developing well-rounded global citizens through expanding our model to STREAM – adding the new elements of research ('R') and art ('A') to STEM," Dr. Hui explains.

In striving to provide future-focused learning opportunities for their students, CAPCL has launched a new STREAM room called the WOW (Work of Wonder) Workshop, along with the current CA Makerspace.

Dr. Hui explains how STEM education has risen globally in response to the needs of an evolving job market that demands competencies like creativity, collaboration, and problem-solving. "Multi-disciplinary learning engages children and teaches them to apply knowledge in a flexible, relevant way. This is the way forward to get our students ready for the future," she says.

In addition to the school's The Treehouse Library's excellent e-book and print collections that nurture students' research and reading skills, the two STREAM rooms aim to provide "an even more hands-

on, collaborative and tech-enabled learning environment conducive to unleashing creativity," Wong says.

"Flexible furniture and a fully-equipped makerspace encourage collaboration and open-ended exploration across different disciplines," Wong elaborates. "Interactive technologies and tools like a 3D printer, an interactive TV, tablets and electronic software are of immense help in stimulating student creativity through multiple options and creative preferences."

While students take ownership of their learning by conducting research and investigations in the STREAM rooms, they would also be doing so under the guidance of teachers, which helps deepen children's understanding and build higher-order thinking skills like analytical, critical thinking and refining methods.

Wong cites the example of a project on indigenous shelters conducted by upper primary students. For starters, they spent time in the WOW Workshop researching and analyzing useful resources and information to include in their projects. They sat in groups and discussed how they wanted to construct and build their shelters, listing out the materials to include and collect. Then, they moved to CA Makerspace to start building the shelters.



"Integrating both of our STREAM rooms doesn't only benefit students' learning, it also provides educators with even more flexibility to create purposeful STREAM projects for children," Wong notes.

CAPCL's inter-disciplinary STREAM approach prepares students exceedingly well for the future, ensuring a seamless transition to secondary education and beyond. "They develop the cross-curricular and innovative mindsets so valued by secondary schools, universities and modern workplaces," says Dr. Hui.

Going forward, Dr. Hui says CAPCL will be placing its priorities on cultivating students' growth mindset and integrating all subjects with a cutting-edge, well-rounded curriculum. With purpose-built facilities and a visionary faculty, the school is poised to achieve this mission.

## Christian Alliance P.C. Lau Memorial International School

2 Fu Ning Street, Kowloon, Hong Kong

Tel: 2713 3733

Email: info@capcl.edu.hk

Website: www.capcl.edu.hk



Christian Alliance P.C. Lau Memorial International School  
宣道會劉平齋紀念國際學校



## Learn and Grow in God's Love Serve and Flourish in God's Grace



**Rejuvenated school campus**  
new school campus, same Christian ethos



**Canadian curriculum**  
Alberta English-Chinese bilingual program



**Christian ethos**  
cultivate students' character development and servant leadership



**Small learning community**  
develop an engaging learning journey

## Apply Now for 2024-2025

✉ admissions@capcl.edu.hk ☎ (852) 2950 6326

🌐 www.capcl.edu.hk



Chat With Us



Follow Us





# ESF - A WORLD CLASS INTERNATIONAL EDUCATION FOR YOUR CHILD



The English Schools Foundation (ESF) is the largest English-medium international school organisation in Hong Kong. Our 22 schools and comprehensive programme of extra-curricular activities bring out the best in every student through a personalised approach to learning and by inspiring curious minds.

There are over 18,000 students from 75 different nationalities in ESF kindergartens, primary, secondary and all-through schools. ESF is proud of the high academic and wider achievements of our students. In 2023, we have a 98% pass rate in the IB Diploma exams and 11 ESF students achieved the perfect score of 45 points in the IB DP.

### Why Choose ESF?

#### • Outstanding Education

We know that, first and foremost, we are here to help your child have the best education possible. Our results speak for themselves. The education that your child will receive at every stage of their journey, from K1 to Y13, will be designed to help them discover their passions.

#### • Outstanding Experiences

From incredible opportunities in sports, the arts and leadership, we work hard to make sure that your child is happy, kind, and always learning.

#### • Outstanding People

The biggest impact on your child's education comes from their teachers. We have the world's best in our schools, led by exceptional Principals.



### Join ESF for the academic year 2025/26

If you're a parent seeking to enrol your child in ESF for the academic year 2025/26, applications for K1 (born 2022), Year 1 (born 2020), and Year 7 (born 2014) will be available from 1 to 30 September 2024. Don't miss out on this opportunity and find out more. Our General Applications are open for all year groups throughout the year. ESF has removed all of our zoning restrictions. No matter where you live in Hong Kong, you are free to apply for any one of the ESF schools. Our kindergartens, primary, secondary and all-through schools are all world-class. You are free to choose whichever one of these amazing places of learning that best suits your individual circumstances.

ESF also offers Kindergarten Debentures or Nomination Rights Schemes for parents who wish to gain interview priority. Secure your child's future today!



### English Schools Foundation

25/F, 1063 King's Road, Quarry Bay, Hong Kong

Tel: 3762 2411

Email: kindergarten.admission@esfcentre.edu.hk/

primary.admissions@esfcentre.edu.hk/

secondary.admissions@esfcentre.edu.hk

Website: www.join-us.esf.edu.hk



ENGLISH SCHOOLS FOUNDATION  
英基學校協會

www.join-us.esf.edu.hk



## A World Class Education From K1 To Y13

ESF is Hong Kong's largest international school organisation. Our 22 schools share the same vision - **for every student to be the best they can be.**

We help our students achieve the extraordinary by holding on to a single truth: that every student is unique, and that every child has their own talents, skills and passions. With our vast resources, wonderful teachers and network of 22 schools, we are able to provide a truly exceptional learning experience.

- ★ ESF School Zoning dropped, parents are free to apply for any one of ESF schools no matter where they live in Hong Kong
- ★ General Applications are open for all year groups throughout the year
- ★ Central Applications for K1, Year 1 and Year 7 for August 2025 admission will be open from 1 to 30 September 2024
- ★ Parents who wish to gain interview priority may apply for ESF's Kindergarten Debentures or Nomination Rights Schemes



Outstanding Education



Outstanding Experiences



Outstanding People



Chat With Us



More Details

5 International Kindergartens

9 Primary Schools

5 Secondary Schools

3 All-Through Schools

18,000+ Students

78+ Nationalities





# Accreditation Matters

Ever wondered about the value of school accreditation and how it works? Read on to find out more from Hong Kong Academy's Primary School Assistant Principal and Accreditation Co-ordinator, Ms Carly Buntin.



International schools around the world engage in accreditation processes to ensure they meet high standards of quality and effectiveness, and that they are providing students with a world-class education. Accreditation can be 'institutional' - used to assess the school as an overall organisation and/or 'programmatic' - used to assess the schools chosen educational programmes.



Accreditation provides an external and independent assessment of a school's strengths, and identifies areas for further development ensuring that the school is engaged in a continuous process of growth. Students from accredited schools are known to exhibit strong knowledge, skills and attributes, and are sought after by universities as they are likely to do well academically.

Hong Kong Academy is accredited by the International Baccalaureate (IB), the Council of International Schools (CIS) and the Western Association of Schools and Colleges (WASC), and is typically re-evaluated every 4 - 5 years. Thanks to many successful IB, CIS and WASC accreditations in the past, HKA was invited to engage in a newly introduced re-accreditation pathway for high performing schools, known as Pathway 2. This allows the school to engage in a Deep Dive process focusing on a specific area of school development.

HKA chose to focus on Global Citizenship and identified four keystone projects inspired by the mission statement.



Re-evaluation is a multi-step cycle including data analysis, internal self-study and preliminary review followed by on site and/or virtual visits from

the evaluators, and the production of a follow up report written by the evaluators. As a community school, HKA's approach to re-evaluation is to include a broad cross section of stakeholders including board, leadership, faculty, staff and student representatives thus ensuring a thorough and authentic 360 perspective.

HKA meets or exceeds all IB requirements for the three educational programmes offered at the school and looks forward to welcoming Pathway 2 evaluators onto campus in March of 2024. With commendations already in place for the school's commitment to educational equity and an abundance of inquiry-based learning opportunities we look forward to identifying our next steps for growth as a global leader in education.



Hong Kong Academy is committed to providing a high-quality, inclusive education for all learners that prepares students for success in a global society. The school's accreditation processes are an important part of this commitment and provide invaluable data which help inform strategic priorities and ensure that the school is meeting the highest standards of educational excellence, is staying true to its mission and values, and delivers what it promises.

Learn more about HKA by contacting the Admissions team, booking a personalised tour or visiting their website [www.hkacademy.edu.hk](http://www.hkacademy.edu.hk).

## Hong Kong Academy

33 Wai Man Road, Sai Kung, New Territories, Hong Kong

Tel: 2655 1111

Email: [admissions@hkacademy.edu.hk](mailto:admissions@hkacademy.edu.hk)

Website: [www.hkacademy.edu.hk](http://www.hkacademy.edu.hk)



## HONG KONG ACADEMY JOYFUL AND RIGOROUS INTERNATIONAL EDUCATION

 INCLUSIVE EDUCATION	 THREE PROGRAMME IB WORLD SCHOOL	 EXCEPTIONAL LOCATION	 GLOBAL ALUMNI NETWORK
 LOW STUDENT:TEACHER RATIO	 COMMITMENT TO INTERNATIONALISM	 AWARD-WINNING FACILITY	 STRONG HOME-SCHOOL PARTNERSHIP

Hong Kong Academy is a non-profit, international through-train school offering a joyful and rigorous education for children aged 3 to 18 years. HKA students hone the competencies, knowledge and skills they need to be successful today and in the future.

### HKA EXPLORATION DAY

9 March 2024 (Saturday), 9:15 am - 1:15 pm

Join specialist activities, faculty-Led workshops, meet the HKA Community and tour the campus. Attendees will be eligible for an application fee waiver!

Applications Open  
For 2024-25  
Mid-year Entry Available



Contact Admissions or  
Book a Personalised Tour

33 Wai Man Road, Sai Kung,  
New Territories, Hong Kong SAR

+852 2655 1111

[admissions@hkacademy.edu.hk](mailto:admissions@hkacademy.edu.hk)

[www.hkacademy.edu.hk](http://www.hkacademy.edu.hk)





# In Service to Humanity

One of the original founders of HKIS was a young Lutheran missionary from the Blackland prairies of Central Texas named Melvin Martin Kieschnick. He was living in Hong Kong in the 1960s and envisioned a school community defined by a few key attributes. In a conversation earlier this year, "Mel" as he is commonly known, recounted those attributes.

"The school should have concern for the whole child," said Mel, where athletics, activities and character development augment a rigorous college-preparatory curriculum. It should be a K-12 school with an American curriculum, both of which would be firsts for Hong Kong. And it should be a school where Christian values would be a defining quality. So Mel helped a group of business leaders and other community members to establish what would be a rather innovative school for this part of the world. Those foundational qualities still define an HKIS education.

And then there was service. HKIS should be a school where, among other important values, students learn how to ground their lives in service. Mel remembers that the mindset around service seventy years ago was different, when Hong Kong was a bustling business hub bedecked in neon.

"Back then, it was an awful lot of 'looking at it from the top down,' where the volunteer was on top of the chain and the receivers were beneath them," Mel reflected in a

conversation earlier this year.

Instead, he hoped this new international school would honor the teachings of Martin Luther, resulting in students and graduates who serve those in need because they are in need.

Over the next six decades, one generation of HKIS students after another found teachers, alumni and volunteers who lived out the value of service. Among these were Zella Talbot and Marty Schmidt. Over the last thirty years, Zella supported students to create Interact, a fundraising service club, while Marty, her husband, developed the Humanities in Action courses. Alumni mention these experiences often in Alumni surveys. Both Desmond Chu



'91 and Jasmin Lau '08, Bob Christian Alumni of the Year honorees, credit teachers like Marty and Zella with inspiring their commitment to service as adults.

But a problem arose. Despite the decades-long inclusion of service opportunities in the HKIS student experience, service learning was largely a product of *individual* teachers and students. And without a unifying set of goals or a framework for cascading concepts, learning outcomes were inconsistent.

To solve this problem of inconsistent outcomes, HKIS added a new position this year: the Service Learning Coordinator. The purpose of this role is to design, develop, and implement a comprehensive service learning framework built on global best practices.

Put another way, this new role will support the development of a coherent set of tools, content and experiences so that every HKIS student leaves with a clear understanding of what it means to "contribute to society."



Stepping into this new role is Lindsay Ernst, who joined HKIS from The University of Hong Kong where she served most recently as a Lecturer in Human Rights Experiential Learning in the Faculty of Law, as well as Co-Director of the Faculty's Master of Law in Human Rights program for the school.

Most new positions at HKIS or other schools are supported by increases in tuition. However, the Service Learning Coordinator role will be supported by the Mel Kieschnick Service Learning Coordinator Endowed Fund.

Like a university professorship or endowed lecturer, this unique endowed fund will reach its goal through gifts from philanthropists who believe in service learning. It will not be funded by tuition or fees.

Thanks to a seed gift, HKIS will work closely with other visionary donors and foundations to meet an ambitious fundraising goal of HK\$40,000,000. This goal ensures the Service Learning Coordinator role can always be staffed with excellent professionals without raising the cost of HKIS tuition.



## Hong Kong International School

### Tai Tam Campus

1 Red Hill Rd, Tai Tam, Hong Kong

Tel: 3149 7000

### Repulse Bay Campus

23 South Bay Close, Repulse Bay, Hong Kong

Tel: 2812 5000

Email: admissions@hkis.edu.hk

Website: www.hkis.edu.hk





# A 15-year international programme that nurtures innovative lifelong learners



### Our School

Invictus School Hong Kong was established in 2019 and takes pride in its high quality and accessible education. Invictus aims to nurture individuals in innovative and inspiring ways to become lifelong learners who contribute to a better tomorrow. The modern Tseung Kwan O campus houses the Kindergarten and Primary years (Nursery to Y6 and ages 3 to 11) and offers a bilingual programme through English and Mandarin Chinese. The Secondary School campus in Chai Wan caters for students from Years 7 to 13 (ages 11 – 18), and offers the world-renowned Cambridge curriculum, including IGCSEs and A-Levels.



### Our Mission

“Our mission at Invictus is to nurture our students to be future-ready and enable them to skillfully navigate the Volatile, Uncertain, Complex and Ambiguous (VUCA) world that we live in today,” says Julia Woo, Head of Schools. “To this end, strong instructional and curriculum leadership and sound assessment is key to empower students to not only thrive in the classroom, but also skillfully navigate an uncertain and changing world today.”

Beyond equipping students with the skills, knowledge and competence to enable them to succeed, Invictus students will also be anchored in values such as discipline, integrity, resilience and kindness, so that they will grow to be fine young men and women of good character.

### Our Curriculum

Learning at Invictus is structured around a rigorous curriculum which spirals up through the Kindergarten, Primary

and Secondary years. The Kindergarten follows the International Early Years Curriculum (IEYC), incorporating the Singapore Mathematics programme and bilingual learning approaches in English and Mandarin Chinese. In the Primary section these foundations are built upon, with Cambridge Primary Curriculum providing an international framework alongside a continuation of Singapore Mathematics and bilingual learning, but where the emphasis on English grows during the Primary years. The Secondary programme begins with a core foundation of subjects in Years 7 to 9, before the Cambridge IGCSE programme in Years 10 and 11 offers students some flexibility to align subject choices and personal strengths. The final step of the Invictus journey is the AS and A-Level programmes in Years 12 and 13. These Cambridge qualifications are world-renowned, offering entry to tertiary institutions around the world.

### Our value-proposition

Invictus School Hong Kong is a through school, where a child who joins Invictus at the Kindergarten or Primary levels, is guaranteed a place in the Primary and Secondary sections. The initial application for any year level is made online. The school promotes affordable international school fees, welcoming local and international families, and administrative and teaching staff are familiar with successfully transitioning students into Invictus from a variety of other school systems.



### Connect With Us

Parents and students who are keen to learn more about Invictus are welcome to visit the school and meet with members of the admissions and teaching teams. We offer visits, tours and also a one-day taster class for students who want to have a glimpse of a Secondary School experience before joining the school. Please reach out to the admissions team via the following details to save a spot.

### Invictus School Hong Kong

#### Tseung Kwan O Campus (Kindergarten & Primary)

Monterey Place, 23 Tong Chun Street, Tseung Kwan O

Tel: (852) 3643 1868

Email: admissions@invictus.edu.hk

Website: www.invictus.edu.hk/tko

#### Chai Wan Campus (Secondary)

188 Tai Tam Road, Chai Wan

Tel: (852) 3852 7201

Email: admissions.chaiwan@invictus.edu.hk

Website: www.invictus.edu.hk/chaiwan



**INVICTUS**  
SCHOOL HONG KONG  
茵維特(香港)學校

## Discover Excellence:

### Experience the Future at the Upcoming Open Day 2024 at Invictus School Hong Kong



#### KINDERGARTEN

9 March 2024, Saturday

1pm – 3pm



#### PRIMARY

9 March 2024, Saturday

10am – 12pm



#### SECONDARY

16 March 2024, Saturday

10am – 1pm

### WHY INVICTUS?



Accessible Premium Education



No Debenture or Levy



Seamless Transfer To Overseas Invictus Schools



Conductive Learning Environment



Robust Curriculum  
IEYC • IPC  
Cambridge Primary / Lower Secondary  
IGCSE • A-Level



Convenient Locations

### Affordable Fees

- ▶ Kindergarten HKD 107,120
- ▶ Primary HKD 110,250
- ▶ Secondary HKD 129,780 – 132,300

### Find out more about us

#### Tseung Kwan O Campus (Kindergarten & Primary)

23 Tong Chun Street, Tseung Kwan O

tko@invictus.edu.hk

+852 3643 1868

www.invictus.edu.hk/tko

#### Chai Wan Campus (Secondary)

188 Tai Tam Road, Chai Wan

chaiwan@invictus.edu.hk

+852 3852 7201

www.invictus.edu.hk/chaiwan

Register



School Tour



Apply Now







# Adventures in Learning at The Harbour School



The Harbour School (THS) is a progressive Pre-K to Grade 12 international school with two campuses on Hong Kong Island that aims to unlock the best in every student by taking a highly individual approach to teaching. The school was founded in 2007 and is already gaining a worldwide reputation as a center of excellence. It follows an American curriculum with an emphasis on 21st century skills such as problem solving, teamwork, creativity and innovation. The Harbour School is accredited by the Western Association of Schools and Colleges (WASC), one of the most rigorous and prestigious accreditation globally.

The Grove, the school's campus for primary and middle grade students, opened in August 2017 in Ap Lei Chau. The Grove features state of the art learning facilities including a makerspace, marine science center, performance theater, and a two-storey treehouse. Students also enjoy trips on the Black Dolphin, the school's 50-foot sailboat, which serves as an outdoor classroom moored in the nearby marine. All THS students from Prep to G12 utilize the facilities at the Grove Campus to extend hands-on learning and reinforce real-world concepts.

In keeping with the school's ethos of personalised learning, high school students enjoy an "urban college" feel in Ap Lei Chau at the Garden campus, a short five-minute walk from the Grove facilities. The school offers advanced placement (AP), honors, core and supported coursework for qualifying students in their pursuit of a US High School Diploma.

The Harbour School is a model for providing inclusive education for typical, advanced and gifted children while also providing attention and support to students with areas of weakness. They develop a global cultural literacy in science, history, technology and the arts in an atmosphere of kindness, flexibility, respect and individualism.

Progressive schools like THS implement student-centred ideas and practices, engaging its students in every aspect of school life.

- THS believes that all students are different, with different needs, learning styles and interests. THS provides a range of opportunities to suit each student.
- THS provides learning environments that are safe, exploratory, exciting and inspiring
- THS teachers are not only highly accomplished and dedicated to the school's mission, but they work collaboratively so that there is a rich and in-depth understanding of each student's strengths, interests and abilities.

Applications for admission are accepted on a rolling basis, for more information, please visit our website.



## THE HARBOUR SCHOOL

### THE GARDEN CAMPUS

138 Lee Chi Road, Ap Lei Chau

Tel: +852 3708 9060

### THE GROVE CAMPUS

332 Ap Lei Chau Bridge Road, Ap Lei Chau

Tel: +852 3905 0180

Email: admissions@theharbourschool.edu.hk

Website: www.ths.edu.hk



# What did we do at school today?

Learning is a voyage in curiosity every day at The Harbour School. Our students are provided with unique opportunities to explore their learning, hands-on. Whether it's studying the life-cycle of moon jellyfish at our Marine Science Center, project managing school development in Kenya or engineering solar-powered ovens at our makerspace, The Foundry, our students can't wait to embark on tomorrow's next adventure.

**Curious? We always are.**  
[www.ths.edu.hk](http://www.ths.edu.hk)



THE HARBOUR SCHOOL  
Unlocking the best







# Get Admissions into Top Universities with Our Professional Study Planning



of the assessment coming from assignments and 30% from internal exams. This comprehensive evaluation method allows us to assess students' understanding and progress over time, providing them with regular and constructive feedback on their performance. By receiving ongoing feedback, students gain valuable insights into their strengths and areas for improvement, enabling them to enhance their learning and reach their full potential.

We also offer credit transfers for Grades 9 to 12, allowing students to transfer up to 23 credits from their home country.

This flexibility enables students to complete the required 30 credits for the OSSD, and with credit transfers, some Grade 12 students can even complete the diploma in as little as eight months.

Ontario eSchool is committed to preparing students for their future educational endeavors. Our education counselors offer university preparation and guidance, assisting students with course selection, university applications, and scholarship opportunities. We strive to equip our students with the necessary skills and knowledge to succeed in their chosen university programs.

The Ontario Secondary School Diploma (OSSD) earned at Ontario eSchool is widely recognized by universities worldwide. This recognition opens doors to numerous educational opportunities for our students, both in Canada and internationally.



Ontario eSchool is a certified high school located in Ontario, Canada, and is accredited by the Ontario Ministry of Education (BSID#882694). As an accredited institution, we have the authority to grant high school credits and the Ontario Secondary School Diploma (OSSD). Our curriculum consists of internationally recognized credit courses, and our teaching staff is composed of highly qualified Ontario Certified Teachers (OCT).



We offer a flexible and self-paced learning environment, allowing students to tailor their education to their interests. Our dedicated teaching staff provides personalized guidance and access to high-quality resources, including digital textbooks and online learning tools, to enhance the learning experience. To ensure personalized attention and foster meaningful social interactions, we maintain a small class ratio that caters to the individual needs of our students. Additionally, all our classes are taught in English by Ontario Certified Teachers (OCT) through real-time live teaching sessions conducted online.

We provide students with a pathway to universities based on their average scores in six Grade 12 subjects, with 70%



## Ontario eSchool

4/F Tower, 6 Bowring St, Jordan

Tel: 2393 8321/ 2393 8312

Email: info@oesasia.org

Website: www.oesasia.org



免費 Free Study Plan 升學課程規劃 2393 8312

全球認可 網上中學課程 無需公開試 直入名牌大學

Accredited Online High School Program Ontario Secondary School Diploma (OSSD)

ONLINE COURSES

加拿大教育局認證中學 註冊編號: BSID#882694



# 專為中三至中六 應屆中學畢業生

DSE, IB, GCSE, IGCSE, A-Level, HD, ASSO

## 加拿大高中畢業文憑課程(OSSD)

### 課程特點

- 報讀學生均獲註冊加拿大安省學籍  
Ontario eSchool students are registered with Ontario Ministry of Education in Canada
- 不設公開考試 (70%作業成績 + 30%校內考試成績)  
No public exams (grades from 70% assignments + 30% internal exams)
- 只需修讀最少6科便可報讀全球大學  
Study a minimum of six subjects to meet global university entry requirements
- 最快可於半年內修畢完成  
The Ontario Secondary School Diploma can be completed in just six months
- 已獲過千個來自全球大學的取錄  
Our students received thousands of offers from universities globally



# Thinking beyond traditional education to transform learning



You want the best for your child. So do we. Nord Anglia International School Hong Kong (NAIS HK) educates your child for the future, enhancing learning through collaborations with the world's best organisations. We teach the most respected and robust educational programmes through collaborations with MIT and Juilliard, delivered in some of the best facilities in all of Hong Kong. Our individual approach to each child enables them to achieve outstanding academic results whilst developing the skills and mind-set to thrive in an ever-changing world.

NAIS HK offers an all-through education for students aged 3-18, with specialist teachers in Music, Art, PE and Mandarin from the very start of a child's educational journey with us. Our sole focus is on the success of each and every child. We want them to be the best they can be and we encourage them to "Be Ambitious", reflecting our school's philosophy. This means we support each student to progress further than they thought possible, achieving more academically, personally and socially – all of which are equally important.

At the heart of the school's success and excellent reputation, is the very high quality of teaching and learning delivered by our exceptional staff. Our teachers create an atmosphere of curiosity, passion and enjoyment for learning in all students. We are proud to attract the best specialist teachers who are committed to nurturing and inspiring every child they care for. We support them to do this through world-class professional development, amplified by the sharing of international best practice. Nord Anglia



Education (NAE) offers our staff the opportunity to study for a fully-funded Master's degree from King's College London, underscoring our commitment to the career progression of each teacher. Teachers here teach children, not classes, so the focus is always on the child as an individual. We bring a new approach to the interdisciplinary subjects of STEAM (science, technology, engineering, arts, and mathematics), putting your child at the forefront of developing skills for the 21st century.

With over 40 nationalities represented in our own school, everyone learns to respect others regardless of differences in opinion, religion, race or ethnicity. All major festivals are celebrated and our annual International Day event is a culmination of the recognition that rich diversity is a strength. At NAIS Hong Kong, every day is an 'international day' as our pupils are part of the greater Nord Anglia Education family, with more than 85 schools in 33 countries, linked by our Global Campus. This allows students to co-operate with each other on projects and learning across the world, making them internationally-minded, effective global citizens of the future.



At NAIS Hong Kong, we offer the IGCSEs and IB Diploma Programme. This curricula provides the greatest success for the largest number of students. With our individualised approach to each child's learning, outstanding teachers and collaborations, and unique opportunities inside and outside the classroom, we promise to nurture your child to love learning and help them to achieve more than they ever thought possible.

We would love to welcome your family to become a valued member of our vibrant and growing global community. Join Nord Anglia International School Hong Kong today and give your child the very best education.

Apply now!

## Nord Anglia International School Hong Kong

- Early Years Campus**  
285 Hong Kin Road, Tui Min Hoi, Sai Kung, New Territories
- Primary Campus**  
11 On Tin Street, Lam Tin, Kowloon
- Secondary Campus**  
19 Yuet Wah Street, Kwun Tong, Kowloon
- Tel:** 3958 1428
- Email:** admissions@nais.hk
- Website:** www.nais.hk

# CREATE YOUR FUTURE

At NAIS Hong Kong, we'll help your child develop the knowledge, creativity and resilience they'll need to succeed - whatever they choose to be or do in life.

Find out how your child can make their mark on the world and how we'll make every moment of their education count.

NAIS.hk





# Premium British Primary School



Inspired by over 470 years of Shrewsbury heritage, Shrewsbury International School Hong Kong was set up in recognition of the profound influence childhood experiences have upon adult lives. The only premium provider of primary education in the region, we offer a unique and uncompromised range of opportunities for children between the ages of 3 and 11, because we only have one chance to get it right.

"We are a Primary School and the vast majority of benefits our students enjoy stem from this critical distinction: they are the sole occupants of our beautiful campus and the most significant consideration of school leaders and governors." Ben Keeling, Principal

Learning at Shrewsbury is founded upon a thematic programme that encourages subject interconnection and runs in close alignment with the English National Curriculum. As a result, students develop their ability to think both creatively and critically within a safe, nurturing and inspiring space, designed for and exclusively used by young learners.

Weekly aquatics lessons supplement an ambitious physical education and performing arts programme facilitated by the availability of an incredible range of exceptional spaces, while a three-tiered Chinese language programme ensures that children of all ages and abilities develop confidence and practical fluency.

Home to a broad and diverse community of international families, the majority of students join Shrewsbury at the age of 3 or 5 and enter into a Nursery or Year 1 class, respectively.

A play centred framework defines the experiences of the youngest students. Children in Nursery classes learn through a process of personalised investigation guided by a highly skilled academic team who act to inspire purposeful, considered and conscious engagement - graduated access to



a full specialist programme of study and a carefully managed series of interactions with older students provides a bedrock for further interconnection and the steady development of a supporting network.

"Nursery students love school - they engage boldly and with confidence, empowered by their continually developing linguistic skills. The close and trusting relationships we share act to guide personalised exploration and stir deep fascination." Aileen Doyle, Early Years Leader



On entry to the Primary section, students are encouraged to develop an interconnected network of meaningful relationships, a passion for learning and an informed view of the world around them. The simultaneous introduction of a House system and the widening of an already expansive Co-Curricular programme broadens social and intellectual contact during a critical phase of childhood development.

"Students in Year 1 are required to interconnect, both formally and incidentally - they rehearse and refine their social skills and in doing so develop the positive learning habits required for critical analysis and creative solution." Ellie Woods, Key Stage 1 Leader

Parents keen to learn more about what makes Shrewsbury sparkle are encouraged to reach out direct via their admissions team.

"You only get one childhood and the experiences on offer at Shrewsbury have a life-defining influence. We provide each of our students with the attributes to thrive both within their primary years and beyond." Ben Keeling, Principal

## Shrewsbury International School Hong Kong

10 Shek Kok Road, Tseung Kwan O  
**Tel:** 2480 1500  
**WhatsApp:** 5997 8356  
**Email:** admissions@shrewsbury.edu.hk  
**Website:** www.shrewsbury.edu.hk



# EVERY CHILD: EVERY OPPORTUNITY

RSVP



Inspired by over 470 years of Shrewsbury heritage, Shrewsbury students enjoy a unique range of experiences and benefit from an unrivalled commitment to specialist provision. The only premium provider of primary education in the region, every student benefits from every available advantage.

Join us for a Campus Tour to learn more about a Shrewsbury education.







# Lou Pichoun École Maternelle Française Internationale Hong Kong

## French International Preschool Hong Kong

Founded in Hong Kong with over 27 years, Lou Pichoun is a French International Preschool with two campuses located in Stanley and Tseung Kwan O.



We welcome children from the Très Petite Section (2-3 years old) to the Grande Section (5-6 years old). Our trilingual preschool curriculum - French, English and Mandarin thoroughly follows the French National Education Official Bulletin and relevant guidelines in terms of programs and objectives. Students can choose between French Stream and International Stream. Our diversified theme-based preschool activities are curated to encourage students to discover, to achieve and to build self-confidence, with a great deal of arts!

support with various after school immersive activities.”

We organise Mini Pichoun playgroup in French, English and Mandarin in small classes for toddlers between 13-24 months with fun and interactive activities designed to develop your child’s emotional, cognitive, physical development and social skills to prepare them for preschool.

Club Pichoun is an after-school program French, English and Mandarin popular for the children between 2 to 6 years old. These language immersion classes are designed to give opportunities for children with or without a French-speaking, English-speaking or Mandarin-speaking family background to perfect their languages through playing, by means of diverse pedagogical tools aimed at putting what they have learned into practice.



Lou Pichoun Tseung Kwan O campus is an EDB registered kindergarten and received the AEFÉ certification for its French program. AEFÉ (Agency for French Education Abroad) is the government institution supervised by the French Ministry of Foreign Affairs. It is responsible for monitoring the quality of 500 accredited French schools abroad. Students of this program gain priority to enrol in other AEFÉ schools worldwide.

Application for PN-K3 for school year 2024/2025 is now open.



“At Lou Pichoun, we pride ourselves on providing a happy and harmonious environment. Our small class size allows more personalized interaction between teachers and children, which helps encourage them to discover, to achieve and build up better self-confidence, with a great deal of arts!” says Mr Pierre Colliot, school supervisor of Lou Pichoun.

“We welcome children with and without a French family background and we help those who need additional language

**Lou Pichoun École Maternelle Française Internationale Hong Kong**

**French International Preschool Hong Kong**

**Campuses:** Stanley | Tseung Kwan O

**Tel:** 2813 4277

**Email:** info@loupichoun.com

**Website:** loupichoun.com



# French Preschool and Playgroup

Since 1997

Welcome 13 months - 6 years old

**Trilingual Environment: French, English and Chinese**  
**Small and Personalized Class**



27+ Years of Experience



Trilingual Preschool



French School System



Emphasis in Arts



Small Classes

**2024 / 2025 REGISTRATIONS NOW OPEN**



JOIN THE FUN!

📞 2813 4277 📞 6304 1021

🏠 loupichoun.com 📧 info@loupichoun.com

STANLEY | TSEUNG KWAN O





# Fairchild: Reggio Emilia Builds Creativity Through Play, Play and more Play!



as water play, they are using their curiosity, figuring out mathematical concepts while measuring and pouring water, considering the changes in volume and seeing the cause and effect of relationships. This allows scientific exploration such as water absorption and changes in state as ice melts! Children are constructing their own theories about how things might work.



Creativity is as important as literacy in today's age, distinguishing us from artificial intelligence. We are human - individually unique. Creativity means we have imagination and have new ideas. At Fairchild, we adopt the Reggio Emilia inspired approach, which sees children as the protagonists of their own learning, allowing children to fully use their creativity and imagination.

The environment becomes the third teacher to motivate and inspire children's learning. Children in Reggio Emilia inspired settings have numerous hands-on learning provocations to support their individual interests, and have the freedom to share their own thoughts and ideas. As children are innately curious and creative, this is harnessed through hands-on activities, which are open-ended and enable children to be completely engrossed in their play. A small piece of wood can instantly become a cookie, a burger, a slice of tomato or cucumber, a pancake, a slice of cheese or even a plate. The possibilities of open ended resources are endless, and there are few limits on a child's imagination.



Art and creativity go hand in hand - the process becomes more important than the product, and through shared collaborative artwork, children build their interaction and language skills as they work and play together. Each child is respected in their own right, and often a child will be able to explain the rationale behind their masterpiece, explaining why they have used certain colours. By reflecting on their own work, children use evaluation skills and build their metacognitive skills.

As children are engaged in play based activities such

### Fairchild Kindergarten

G/F & 1/F Kong Chian Tower, Block 1,  
351 Des Voeux Road West, Sai Ying Pun  
Tel: 2803 2638

### Fairchild Junior Academy

22/F, Park Commercial Centre,  
180 Tung Lo Wan Road, Tin Hau  
Tel: 2898 1611

## OPEN FOR ADMISSIONS

📍 Tin Hau 📍 Sai Ying Pun  
**English/Bilingual Kindergarten & Playgroup**

Fairchild is, in the words of one of our children, *'that perfect place'* where children come to school every day with a big smile.

Ms. Betty Yau, Principal

CREATIVITY

CURIOSITY

CONFIDENCE

- Awarded "HK Top 10 Most Valuable Pre-schools"
- 90% of the graduates admitted to elite international schools
- Immersive language-rich environment

Places in PN & K1 classes are very limited. Contact us to book a school tour.







# Brings the best of Canadian bilingual education to prepare students to succeed in their lifetime

Maple Bear Canadian International Kindergarten brings the best of Canadian bilingual education to prepare students holistically to succeed. With over 600 Maple Bear schools in over 40 countries around the world, we operate in conformity by offering an international experience at every school, while still providing educational experiences personalised to each community's unique needs. Do have a chance to visit our beautiful Maple Bear Hong Kong campuses, located in Tseung Kwan O.



### Canadian Quality and Standard

The Maple Bear Curriculum is continually updated by our Maple Bear Faculty, a team of early childhood experts from Canada. Teachers at Maple Bear are all trained, qualified and receive continuous professional development training on the latest pedagogies and instructional strategies to make sure students are receiving the best education at their rapid development stages.

Maple Bear is more than learning a language through our bilingual language immersion experience, the model aims to provide a complete education of the child physically, intellectually, emotionally, and socially, in which three components are fundamental: Creativity, Collaboration and Critical Thinking. Based on a themed project, lessons are fully child-led, activity-driven and play-based, students learn English and Mandarin using a student-focused language immersion learning system based on Canadian educational pedagogies and best practices.



"Students are encouraged to take risks and explore in a safe environment for learning. Every staff member is acquainted with every Maple Bear student and finally we are able to achieve because of the love and care from our team and the full support and sharing of best practices from Maple Bear Global Schools!" said Ms Julie Chu, Principal at Maple Bear Hong Kong.

Maple Bear organises English playgroups for young children aged from 4 to 24 months, students will bridge directly into our Kindergarten classes to building up toddler confidence and making sure for a smooth transition.

Applications for PN-K3 for school year 2024/2025 is now open.



### Immersive Play-based Bilingual Environment

Play is a crucial part of development of the whole child. At Maple Bear, we put an emphasis on how valuable play is for young children. Play promotes interacting with people, manipulating objects, problem-solving and making discoveries that help make sense of the world and learning happens authentically.

### Maple Bear Canadian International Kindergarten Hong Kong

Shop 7, Alto Residences, 29 Tong Yin Street, Tseung Kwan O

Tel: 2813 4887 / 6848 1264

Email: admissions@maplebear.hk

Website: www.maplebear.hk

# MAPLE BEAR HONG KONG



## Maple Bear Canadian International Kindergarten

The best of Canadian education for a global future.  
**REGISTRATION NOW OPEN**

☎ 2813 4887 📞 6848 1264

Shop 7, G/F Alto Residences,  
29 Tong Yin Street, Tsung Kwan O

✉ admissions@maplebear.hk

🌐 maplebear.hk



MapleBear  
Canadian International Kindergarten



10% EARLY BIRD  
DISCOUNT  
BY MARCH 9



# 2024 EASTER STEM PROGRAMS

CURATED FOR STUDENTS AGES 3 - 14  
MARCH 25 TO APRIL 5 2024



20 YEARS OF STEM EXPERIENCE. CURRICULUM TRUSTED AND ADOPTED BY SCHOOLS



拔萃女小學  
Diocesan Girls' Junior School



Hong Kong  
International School



救恩學校



弘立書院  
THE ISF ACADEMY



VICTORIA  
Educational Organisation  
維多利亞教育機構

REGULAR AND HOLIDAY PROGRAMS COVERING THE FOLLOWING STEM TOPICS:

ROBOTICS

CODING

A.I.

DRONES

MINECRAFT

ROBLOX

SCIENCE

ENGINEERING



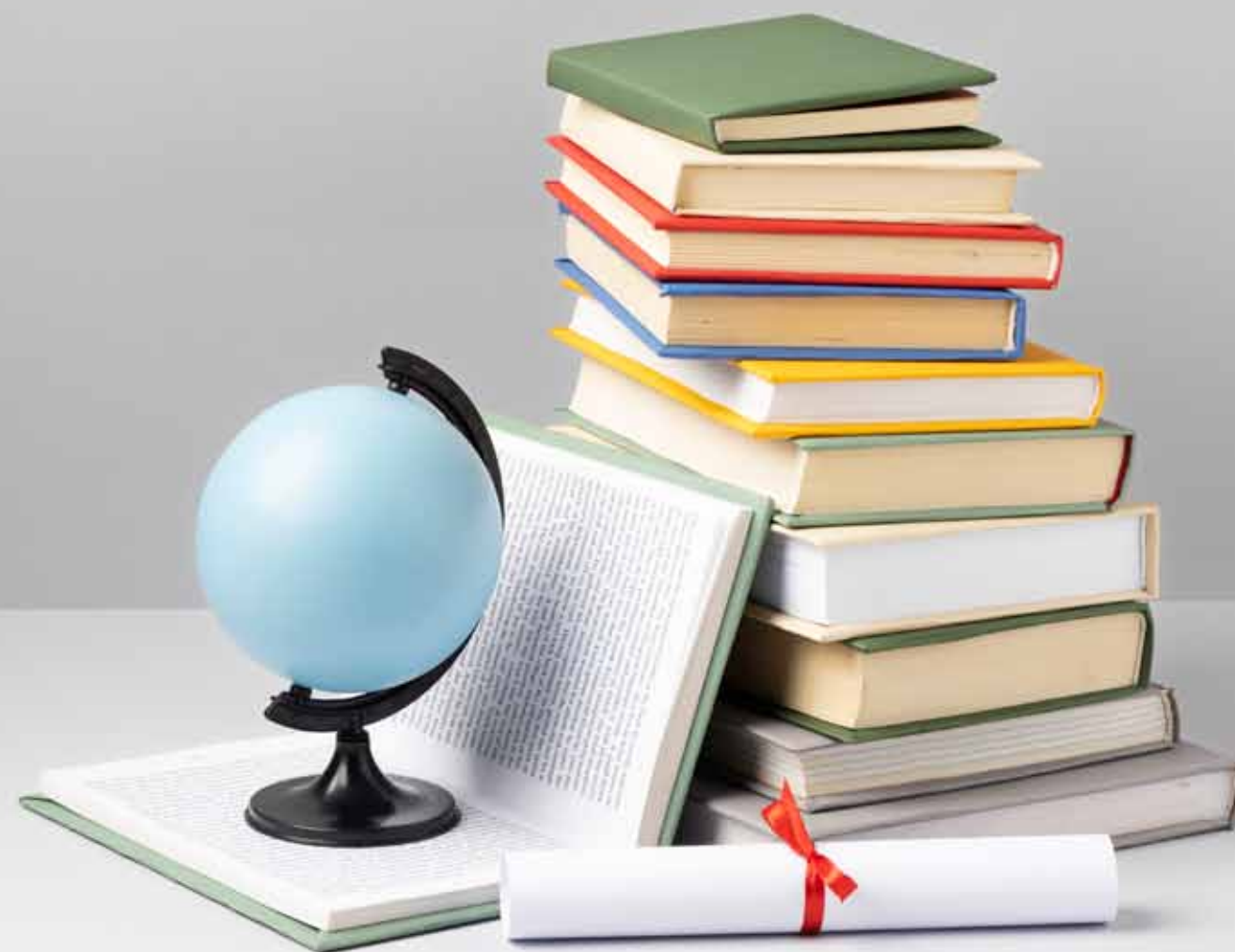
EASTER CAMPS



CHAT WITH US



## Directory





### ABC Pathways International Kindergarten

**Tai Koo Campus**  
G/F, Block 8&9, Kornhill Garden,  
1124 King's Road, Quarry Bay  
**Tel:** 2110 1211  
**Email:** enquiry.tk@ABCpathways.edu.hk

**Whampoa Campus**  
Shop LG01, 01A & 01B on LG/F, and  
UG45A-C on UG/F, The Laguna Mall,  
8 Laguna Verde Avenue, Hung Hom  
**Tel:** 2110 9993  
**Email:** enquiry.wp@ABCpathways.edu.hk  
**Website:** abcpathways.edu.hk  
**Year founded:** 2014  
**Curriculum:** International

### American International School

125 Waterloo Road, Kowloon Tong, Hong Kong  
**Tel:** 2336 3812  
**Email:** admissions@ais.edu.hk  
**Website:** www.ais.edu.hk  
**Year founded:** 1986  
**Curriculum:** US Common Core State Standards  
and AP Courses



### American School Hong Kong

6 Ma Chung Road, Tai Po, N.T.  
**Tel:** 3919 4111  
**Email:** admissions@ashk.edu.hk  
**Website:** www.ashk.edu.hk  
**Year founded:** 2016  
**Curriculum:** US, IB

### Anchors Academy Anchors Academy Affiliated International Kindergarten cum Nursery

1 Ko Po Path, Yuen Long, Kam Tin North,  
Yuen Long, New Territories  
**Primary**  
**Tel:** 3860 5605  
**Email:** AAPInfo@anchorsacademy.edu.hk  
**Kindergarten cum Nursery**  
**Tel:** 3860 5655  
**Email:** AAKGinfo@anchorsacademy.edu.hk  
**Website:** www.anchorsacademy.edu.hk  
**Year Founded:** 2023



### Anfield International Kindergarten

5 Cumberland Road, Kowloon Tong, Kowloon  
**Tel:** 2794 3668  
**Email:** admin@anfield.edu.hk  
**Website:** www.anfield.edu.hk  
**Year founded:** 1999

### Anfield International Kindergarten and Nursery

L2, Phase 1, Laguna Verde,  
8 Laguna Verde Avenue, Hung Hom, Kowloon  
**Tel:** 2766 3882  
**Email:** admin-lv@anfield.edu.hk

### Austin School

Austin Tower, 152 Austin Road, Tsim Sha Tsui,  
Kowloon, Hong Kong  
**Tel:** (852) 2711 1136  
**Email:** admissions@austinschool.edu.hk  
**Website:** www.austinschool.edu.hk

### Australian International School Hong Kong

3A Norfolk Road, Kowloon Tong  
**Tel:** 2304 6078  
**Email:** info@aishk.edu.hk  
**Website:** www.aishk.edu.hk  
**Year founded:** 1995  
**Curriculum:** Australian National Curriculum, IBDP

### Baumhaus Wan Chai

1/F Kar Yau Building,  
36-44 Queen's Road East, Wan Chai  
**Tel:** 2321 5898  
**Website:** www.baumhaus.com.hk

### Bloom KKCA Academy

7 Pui Tak Street, Shek Kip Mei  
**Tel:** 2311 2268  
**Email:** admissions@bloom.edu.hk  
**Website:** www.bloom.edu.hk



### Blooming Buds Preschool

Unit 7, 1/F, Island Crest, 8 First Street,  
Sai Ying Pun, Hong Kong  
**Tel:** 2887 9921  
**Email:** enquiry@bloomingbuds.com.hk  
**Website:** www.bloomingbuds.com.hk  
**Year founded:** 2012  
**Curriculum:** Reggio Emilia Approach and  
the Creative Curriculum

### Box Hill (HK) International Kindergarten & Pre-school

**Ma On Shan Campus**  
G/F, Tower 10, Phase 1, Vista Paradiso,  
No. 2 Hang Ming Street, Ma On Shan  
**Tel:** 2750 6323  
**Email:** mos@boxhill.edu.hk

**Fo Tan Campus**  
No. 327 on Podium of Jubilee Square,  
2-18 Lok King Street, Fo Tan, New Territories  
**Tel:** 2688 2161  
**Email:** ft@boxhill.edu.hk

**Tseung Kwan O Campus**  
Shop 2 & 3, Level G/F & 1/F, Mount Verdant,  
48 Chui Ling Road, Tseung Kwan O, New Territories  
**Tel:** 2623 0023  
**Email:** tko@boxhill.edu.hk  
**Website:** www.boxhill.edu.hk  
**Year founded:** 2004  
**Curriculum:** Early Years Foundation Stage

### Brightland International Kindergarten

Shop 1, Wing A, Block A, Tak Nga Court,  
2 Hiu Wan Road, Tai Po  
**Tel:** 2651 3311  
**Email:** info@brightland.edu.hk  
**Website:** brightland.edu.hk  
**Year Founded:** 2016

PIONEERS OF THE  
STORYTELLING IMAGE

venture  
studios

CREATING MEMORIES



CALL NOW!  
2885 6262

LONDON • HONG KONG • NEW YORK



Find us on:  
**facebook**



Venture Studios Hong Kong



Venturephotography.com/hk



venturestudioshk



+852 5304 7363



### Canadian International School of Hong Kong

36 Nam Long Shan Road, Aberdeen  
Tel: 2525 7088  
Email: schoolinfo@cdnis.edu.hk  
Website: www.cdnis.edu.hk  
Year founded: 1991  
Curriculum: IB and OSSD

### California School

3/F, Front Block, Lung Ma Building,  
550 Nathan Road, Yau Ma Tei  
Tel: 2388 9844 / 9822 7549  
Email: info@californiaschool.edu.hk  
Website: www.californiaschool.edu.hk  
Year founded: 1992  
Curriculum: IGCSE, A-Levels

### Cannan Kindergarten (Whampoa Garden)

Portion of G/F, Commercial Podium,  
Site 10, Whampoa Garden, Hung Hom  
Tel: 2330 3336  
Website: www.cannan.edu.hk  
Year Founded: 1997

### Carmel School Hong Kong

Elsa High School Campus  
460 Shau Kei Wan Road, Shau Kei Wan, Hong Kong  
Tel: 3665 5388  
Carmel Elementary Campus  
10 Borrett Road, Mid-Levels, Hong Kong  
Tel: 2964 1600  
Holly Rofé Early Learning Centre  
70 Robinson Road, Mid-Levels, Hong Kong  
Tel: 2249 7600  
Email: admissions@carmel.edu.hk  
Website: www.carmel.edu.hk  
Year founded: 1991



### Cherish English School & Kindergarten

Shop KG01, G/F & M/F, Sai Wan Estate,  
East Terrace, Kennedy Town  
Tel: 2855 0080  
Website: www.cherish.edu.hk  
Year Founded: 1988

### Chinese Academy

77 Caroline Hill Road, Causeway Bay, Hong Kong  
Tel: 2499 8000  
Email: enquiry@caps.edu.hk  
Website: www.caps.edu.hk  
Year founded: 2017  
Curriculum: Primary: Bilingual Immersion in English & Chinese (Putonghua);  
Secondary: IB MYP, IB DP

### Chinese International School

1 Hau Yuen Path, Braemar Hill, North Point  
Tel: 2510 7288  
Email: cis\_info@cis.edu.hk  
Website: www.cis.edu.hk  
Year founded: 1983  
Curriculum: Primary: balanced and integrated dual language curriculum in both English and Chinese; Secondary: IBMYP & IBDP. In Year 10, students study the IB MYP in our satellite campus in Hangzhou (CIS Hangzhou)

### Christian Alliance International School

33 King Lam Street, Lai Chi Kok, Kowloon  
Tel: 3699 3862 / 3699 3863 / 3699 3865  
Email: admissions@caisbv.edu.hk  
Website: www.caisbv.edu.hk  
Facebook: @cais.hk  
Instagram: @caisbv



### Christian Alliance P.C. Lau Memorial International School

2 Fu Ning Street, Kowloon, Hong Kong  
Tel: 2713 3733  
Email: info@capcl.edu.hk  
Website: www.capcl.edu.hk  
Curriculum: Canada's Alberta Curriculum



### Concordia International School

68 Begonia Road, Yau Yat Chuen  
Tel: 2789 9890  
Email: office@concordiaintl.edu.hk  
Website: www.cihs.edu.hk  
Year founded: 1990  
Curriculum: North American

### Creative Kindergarten

G/F, 6 Rutland Quadrant, Kowloon Tong  
Tel: 2336 1139  
Website: www.creative.edu.hk  
Year Founded: 1984

### Creative School Continuum

Creative Primary School's Kindergarten,  
Creative Primary School  
2A Oxford Road, Kowloon Tong, Kowloon, HK  
Tel: 2336 1212 / 2336 0266  
Email: cps@creativeprisch.edu.hk  
Website: www.creativeprisch.edu.hk  
Creative Secondary School  
3 Pung Loi Road, Tseung Kwan O, Sai Kung  
Tel: 2336 0233  
Email: admin@css.edu.hk  
Website: www.ccs.edu.hk  
Year founded: 2006  
Curriculum: HKDSE, IBMYP, IBDP

### Dalton School Hong Kong

1/F & 2/F, Imperial Cullinan,  
10 Hoi Fai Road, Kowloon  
Tel: 3612 4660  
Email: info@dshk.edu.hk  
Website: www.dshk.edu.hk  
Year founded: 2017  
Curriculum: US Common Core Standards Tsinghua Chinese

### David Exodus Kindergarten

Upper Ground Podium, Block 4,  
Julimount Garden, Tai Wai, Shatin, N.T.  
Tel: 2699 0100  
Website: www.dek.edu.hk  
Year founded: 1989  
Curriculum: Own

### Deborah Educational Institute:

Deborah International Pre-school /  
Play school (Tseung Kwan O)  
Kindergarten Tower, Bauhinia Garden,  
11 Tong Chun Street, Tseung Kwan O  
Tel: 3403 4393  
Curriculum: International  
Deborah International Pre-school / Play-school  
(Hung Hom)  
1/F, Site 2 and G/F, Site 7,  
Whampoa Garden, Hung Hom, Kowloon  
Tel: 2362 8379 (Site 2) / 2774 1669 (Site 7)  
Curriculum: International / Japanese International

### Delia Memorial School (Glee Path)

1-3 Glee Path, Mei Foo Sun Chuen, Kowloon  
Tel: 2741 5239  
Email: gp@deliagroup.edu.hk  
Website: www.deliagp.edu.hk  
Curriculum: HKDSE, IBDP

### DSC International School

5-7, Tai Fung Avenue, Taikoo Shing  
Tel: 3658 0400  
Email: admissions@dsc.edu.hk  
Website: www.dsc.edu.hk  
Year founded: 1987  
Curriculum: Ontario Curriculum / Alberta Curriculum, Canada

### Diocesan Boys School Primary Division & Diocesan Boys School

131 Argyle Street, Mongkok, Kowloon  
Tel: 2711 5191  
Email: dbsadmin@dbs.edu.hk  
Website: www.dbs.edu.hk  
Year founded: 1869  
Curriculum: HKDSE, IBDP

### Diocesan Girls' School

1 Jordan Road, Kowloon  
Tel: 2277 9100  
Email: info@dgs.edu.hk  
Website: www.dgs.edu.hk  
Year founded: 1860  
Curriculum: HKDSE, A-Levels

### Discovery Bay International School

Discovery Bay, Lantau Island  
Tel: 3987 7331  
Email: admissions@dbis.edu.hk  
Website: www.dbis.edu.hk  
Year founded: 1983  
Curriculum: British National Curriculum and International Primary Curriculum

### Discovery Mind Kindergarten/ International Play Centre

Discovery Bay Campus  
401, Marina Commercial Centre, G/F,  
2-8 Coastline Villa, Peninsula Village, Discovery Bay  
Tel: 2987 8088  
Email: dmk@discoverymind.edu.hk  
Tung Chung Campus  
G/F, Seaview Crescent,  
No. 8 Waterfront Road, Tung Chung  
Tel: 2987 8070  
Email: dmtc@discoverymind.edu.hk

### Discovery Mind Primary School

Discovery Bay Campus  
1/F, Shop 102, 92 Siena Avenue,  
North Plaza, Discovery Bay  
Tel: 2914 2202  
Email: admission\_db@discoverymind.edu.hk  
Tung Chung Campus  
G/F, Shop A-D Seaview Crescent,  
No. 8 Waterfront Road, Tung Chung  
Tel: 2915 0666  
Email: admission\_tc@discoverymind.edu.hk  
Website: www.discoverymind.edu.hk  
Year founded: 2012  
Curriculum: IPC

### Discovery Montessori Academy

Block 1, 92 Siena Ave, Discovery Bay,  
Lantau Island, Hong Kong  
Tel: 2812 9206  
Email: primary@dms.edu.hk  
Website: www.dms.edu.hk  
Year founded: 2015  
Curriculum: Montessori

### Discovery Montessori School

Discovery Bay Campus  
Shop 101, 1/F, 92 Siena Avenue,  
Discovery Bay, Lantau Island, Hong Kong  
Tel: 2987 1201  
Email: enquiry@discoverymontessori.info  
Central Campus  
3/F, Mandarin Building, 34-43 Bonham Strand,  
Central, Hong Kong  
Tel: 2850 8006  
Email: enquiry@dms.edu.hk  
Website: www.dms.edu.hk  
Year founded: 2010  
Curriculum: Montessori

### EIS International Preschool

No.1 San Wai Tsuen, San Tin, Yuen Long  
Tel: 2889 7680 / 2889 7681  
Fax: 2889 7331  
Email: info@eminent-education.org  
Website: www.emient-education.org  
IG/Facebook: theeminenteducation  
Year founded: 2020  
Curriculum: EYFS, Nature-based Preschool

### English Schools Foundation

25/F, 1063 King's Road, Quarry Bay, Hong Kong  
Tel: 3762 2411  
Email: info@esfcentre.edu.hk  
Website: www.esf.edu.hk  
Year founded: 1967



### ESF Abacus International Kindergarten

1A Mang Kung Uk Road, Clearwater Bay  
Tel: 2719 5712  
Email: kinder@abacus.edu.hk  
Website: www.abacus.edu.hk  
Year founded: 2002  
School Type: Private  
Curriculum: IB Primary Years Programme

### ESF Abacus International Kindergarten

1A Mang Kung Uk Road, Clearwater Bay  
Tel: 2719 5712  
Email: kinder@abacus.edu.hk  
Website: www.abacus.edu.hk  
Year founded: 2002  
School Type: Private  
Curriculum: IB Primary Years Programme

### ESF Beacon Hill School

23 Ede Road, Kowloon Tong  
Tel: 2336 5221  
Email: bhs@bhs.edu.hk  
Website: www.beaconhill.edu.hk  
Year founded: 1967  
School Type: ESF  
Curriculum: IB Primary Years Programme

### ESF Bradbury School

43C Stubbs Road, Happy Vally  
Tel: 2574 8249  
Email: enquiries@bradbury.edu.hk  
Website: www.bradbury.edu.hk  
Year founded: 1992  
School Type: ESF  
Curriculum: IB Primary Years Programme

### ESF Clearwater Bay School

DD 229, Lot 235, Clearwater Bay Road, Clearwater Bay  
Tel: 2358 3221  
Email: info@cwbs.edu.hk  
Website: www.cwbs.edu.hk  
Year founded: 1980  
School Type: ESF  
Curriculum: IB Primary Years Programme

### ESF Discovery College

38 Siena Avenue, Discovery Bay, Lantau Island  
Tel: 3969 1000  
Email: office@dc.edu.hk  
Website: www.discovery.edu.hk  
Year founded: 2007  
School Type: Private  
Curriculum: IB Primary Years Programme, IB Diploma

### ESF Glenealy School

7 Hornsey Road, Mid Levels  
Tel: 2522 1919  
Email: enquiry@glenealy.edu.hk  
Website: www.glenealy.edu.hk  
Year founded: 1959  
School Type: ESF  
Curriculum: IB Primary Years Programme

### ESF Hillside International Kindergarten

43B Stubbs Road, Mid-Levels East  
Tel: 2540 0066  
Email: kinder@hillside.edu.hk  
Website: www.hillside.edu.hk  
Year founded: 1999  
School Type: Private  
Curriculum: IB Primary Years Programme



### ESF Island School

20 Borrett Road, Mid Levels  
(permanent campus currently under redevelopment)  
Temporary campuses:  
[Island School Sha Tin Wai \(Years 7, 8, 12, 13\)](#)  
[Pok Hong Estate, Area 5A, Sha Tin, New Territories](#)  
[Island School Tai Wai \(Years 9, 10, 11\)](#)  
Estate Secondary School No. 2, Sun Chui Estate, Sha Tin  
**Tel:** 2524 7135  
**Email:** school@online.island.edu.hk  
**Website:** www.island.edu.hk  
**Year founded:** 1967  
**School Type:** ESF  
**Curriculum:** GCSE/IGCSEs, IB Diploma, Applied Learning Programme (BTEC qualifications)

### ESF Jockey Club Sarah Roe School

2B Tin Kwong Road, Homantin  
**Tel:** 2761 9893  
**Email:** info@jcsrs.edu.hk  
**Website:** www.jcsrs.edu.hk  
**Year founded:** 1985  
**School Type:** ESF  
**Curriculum:** Primary Learning Programme, ASDAN Award Programme, Transition Challenge Programme, Towards Independence Challenge

### ESF Kennedy School

19 Sha Wan Drive, Pokfulam  
**Tel:** 2579 5600  
**Email:** admissions@kennedy.edu.hk  
**Website:** www.kennedy.edu.hk  
**Year founded:** 1961  
**School Type:** ESF  
**Curriculum:** IB Primary Years

### ESF King George V School

2 Tin Kwong Road, Homantin  
**Tel:** 2711 3029  
**Email:** office@kgv.edu.hk  
**Website:** www.kgv.edu.hk  
**Year founded:** 1902  
**School Type:** ESF  
**Curriculum:** GCSE/IGCSEs, IB Diploma, Applied Learning Programme (BTEC qualifications)

### ESF Kowloon Junior School

20 Perth Street, Homantin, Kowloon, Hong Kong  
**Tel:** 3765 8700  
**Email:** office@kjs.edu.hk  
**Website:** www.kjs.edu.hk  
**Year founded:** 1902  
**School Type:** ESF  
**Curriculum:** IB Primary Years Programme

### ESF Peak School

20 Plunketts Road, The Peak  
**Tel:** 2849 7211  
**Email:** office@peakschool.net  
**Website:** www.ps.edu.hk  
**Year founded:** 1911  
**School Type:** ESF  
**Curriculum:** IB Primary Years Programme

### ESF Quarry Bay School

6 Hau Yuen Path, Braemar Hill, North Point  
**Tel:** 2566 4242  
**Email:** office@qbs.edu.hk  
**Website:** www.qbs.edu.hk  
**Year founded:** 1926  
**School Type:** ESF  
**Curriculum:** IB Primary Years Programme

### ESF Sha Tin College

3 Lai Wo Lane, Fo Tan, Sha Tin  
**Tel:** 2699 1811  
**Email:** info@shatincollege.edu.hk  
**Website:** www.shatincollege.edu.hk  
**Year founded:** 1982  
**School Type:** ESF  
**Curriculum:** IGCSE, IB Diploma

### ESF Sha Tin Junior School

3A Lai Wo Lane, Fo Tan, Sha Tin, New Territories  
**Tel:** 2692 2721  
**Email:** info@sj.s.esf.edu.hk  
**Website:** www.sjs.edu.hk  
**Year founded:** 1988  
**School Type:** ESF  
**Curriculum:** IB Primary Years Programme

### ESF South Island School

50 Nam Fung Road, Aberdeen, Hong Kong  
**Tel:** 2555 9313  
**Email:** sis@sis.edu.hk  
**Website:** www.sis.edu.hk  
**Year founded:** 1977  
**School Type:** ESF  
**Curriculum:** GCSE/IGCSEs, IB Diploma, IB Career-related Programme, Applied Learning Programme (BTEC qualifications)

### ESF Tsing Yi International Kindergarten

Maritime Square, 33 Tsing King Road, Tsing Yi  
**Tel:** 2436 3355  
**Email:** admissions@tyk.edu.hk  
**Website:** www.esf.edu.hk  
**Year founded:** 1999  
**School Type:** Private  
**Curriculum:** IB Primary Years Programme

### ESF Tung Chung International Kindergarten

1/F, Commercial Accommodation, The Visionary, 1 Ying Hong Street, Tung Chung, Lantau, N.T.  
**Tel:** 3742 3500  
**Email:** kinder@tc.esf.org.hk  
**Website:** www.tck.edu.hk  
**Year founded:** 2016  
**School Type:** Private  
**Curriculum:** IB Primary Years Programme

### ESF West Island School

250 Victoria Road, Pok Fu Lam, Hong Kong  
**Tel:** 2819 1962  
**Email:** wis@wis.edu.hk  
**Website:** www.wis.edu.hk  
**Year founded:** 1991  
**School Type:** ESF  
**Curriculum:** GCSE/IGCSEs, IB Diploma, Applied Learning Programme (BTEC qualifications)

### ESF Wu Kai Sha International Kindergarten

Level 1, Lake Silver Tower, 599 Sai Sha Road, Ma On Shan  
**Tel:** 2435 5291  
**Email:** kinder@wksk.edu.hk  
**Website:** www.wksk.edu.hk  
**Year founded:** 2009  
**School Type:** Private  
**Curriculum:** IB Primary Years Programme

### EtonHouse International Pre-School

LG/F Kindergarten, Mayfair By The Sea I, 23 Fo Chun Road, Tai Po  
**Tel:** 2780 5700  
**Email:** enquiry@etonhouse.com.hk  
**Website:** www.etonhouse.com.hk  
**Year founded:** 1995  
**Curriculum:** Inquiry based Reggio Emilia inspired curriculum

### Fairchild Junior Academy

22/F, Park Commercial Centre, 180 Tung Lo Wan Road, Tin Hau, Hong Kong  
**Tel:** 2898 1611  
**Email:** info@fairchild.academy  
**Website:** www.fairchild.academy  
**Year founded:** 2016

**Curriculum:** Canadian Early Learning Framework



### Fairchild Kindergarten

G/F & 1/F, Kong Chian Tower, Block 1, 351 Des Voeux Road West, Sai Ying Pun, Hong Kong  
**Tel:** 2803 2638  
**Email:** info@fairchild.edu.hk  
**Website:** www.fairchild.edu.hk  
**Year founded:** 2017  
**Curriculum:** Canadian Early Learning Framework and Hong Kong Kindergarten Education Curriculum Guide

### Forest House Waldorf School

Commercial Development Floral Villas, 18 Tso Wo Road, Sai Kung  
Tel: 2792 6055  
Email: info@foresthous.edu.hk  
Website: www.waldorf.edu.hk  
Year founded: 2014  
Curriculum: Waldorf

### French International School

Blue Pool Road Campus  
165 Blue Pool Road, Happy Valley  
Chai Wan Campus  
1 Cheung Man Road, Chai Wan, Hong Kong  
Jardine's Lookout Campus  
34 Price Road, Jardine's Lookout, Hong Kong  
Tseung Kwan O Campus  
28 Tong Yin Street, Tseung Kwan O, N.T.  
**Tel:** 2577 6217  
**Email:** info@fis.edu.hk  
**Website:** www.fis.edu.hk  
**Year founded:** 1963  
**Curriculum:** English National Curriculum to IGCSE then IBDP; French National Curriculum

### Funful Group of Schools

Kindergarten Section  
No.20 Durham Road, Kowloon Tong, Hong Kong  
**Tel:** 2337 6883  
**Email:** kln20funful@yahoo.com.hk  
**Website:** www.kindergarten.funful.hk/  
Primary Section  
1 Cumberland Road, Kowloon Tong, Hong Kong  
**Tel:** 2338 3434  
**Email:** office@fsris.edu.hk  
**Website:** www.fsris.edu.hk

### Galilee International School – Kindergarten & Nursery

1/F Peace Garden, 2 Peace Avenue, Ho Man Tin, Kowloon  
**Tel:** 2390 3000  
**Email:** gis@gis.edu.hk  
**Website:** www.gis.edu.hk  
**Year founded:** 2014  
**Curriculum:** International Baccalaureate (Primary Years Programme)

### Garden House Waldorf School

G/F, Silverstrand Shopping Centre, 7 Silverstrand Beach Road, Clearwater Bay  
Tel: 2358 1177  
Email: info@gardenhouse.edu.hk  
Website: www.gardenhouse.edu.hk  
Year founded: 2008  
Curriculum: Waldorf

### German Swiss International School

Main Campus (Primary & Secondary)  
11 Guildford Road, The Peak  
**Tel:** 2849 6216  
Pok Fu Lam Campus (Kindergarten & Lower Primary)  
162 Pok Fu Lam Road, Pok Fu Lam, Hong Kong  
**Tel:** 2849 6217  
**Email:** info@gsis.edu.hk  
**Website:** www.gsis.edu.hk  
**Year founded:** 1969  
**Curriculum:** GSIS is a multi-language through-train school, from Kindergarten to Secondary, operating two parallel streams - the German International Stream and the English International Stream - following curricula that respectively lead to the German International Abitur Diploma and the International Baccalaureate (IB) Diploma following IGCSE examinations in Year 11

### Gigamind English Primary School

Block A, 9 Tin Lung Road, Phase 6, Maywood Court, Kingswood Villas, Tin Shui Wai, N.T.  
**Tel:** 2446 9883  
**Email:** info@gigamind.edu.hk

### Gigamind Kindergarten & Children's House

Block B, 9 Tin Lung Road, Phase 6, Maywood Court, Kingswood Villas, Tin Shui Wai, N.T.  
**Tel:** 2446 9210  
**Email:** kginfo@gigamind.edu.hk  
**Website:** www.gigamind.edu.hk  
**Year founded:** 2001  
**Curriculum:** Own

### Good Time International Play School & Kindergarten

L4 Block C & D, Shatin Plaza, Shatin, New Territories  
**Tel:** 2601 3278  
**Whatsapp:** 9445 5085  
**Email:** info@deikindergarten.org  
**Website:** www.goodtimeie.edu.hk

### Grace Garden International Nursery and Kindergarten

Shop GA 12B – 14, G/F, Site A, 55 Tai Hong Street, Lei King Wan, Sai Wan Ho (MTR Station Exit A)  
**Tel:** 2702 9778  
**Whatsapp:** 6100 8339  
**Email:** enquiry@gracegarden.edu.hk  
**Website:** www.gracegarden.edu.hk  
**Year founded:** 2015  
**Curriculum:** Early Years Foundation Stage

### Greenfield English (International) Kindergarten

The Long Beach  
Unit 1 Kindergarten Area UG/F, 8 Hoi Fai Road, The Long Beach, West Kowloon  
**Tel:** 3514 8081  
**Website:** www.greenfield.edu.hk  
**Year Founded:** 2011  
Tung Chung  
Podium, 1/F, Caribbean Bazaar, Caribbean Coast, 1 Kin Tung Road, Tung Chung, Lantau Island  
**Tel:** 2162 5538  
**Website:** www.greenfield.edu.hk  
Lohas Park  
Kindergarten Site, Hemera, Lohas Park III, Tseung Kwan O  
**Tel:** 2246 4801  
**Website:** www.greenfield.edu.hk  
**Year Founded:** 2016  
Tseung Kwan O  
G/F., Shop & Podium Level 1, Nan Fung Plaza, Tseung Kwan O  
Tel: 2274 2238  
**Website:** www.greenfield.edu.hk  
Mont Vert  
The Kindergarten, Mont Vert, 9 Fung Yuen Road, Tai Po  
**Tel:** 3907 0178  
**Website:** www.greenfield.edu.hk  
Ma On Shan  
Shop A1-a & 2/F, Podium, Ma On Shan Centre, Ma On Shan, New Territories  
**Tel:** 2633 0327  
**Fax:** 2640 4474  
**Website:** www.greenfield.edu.hk

### Guidepost Montessori

Chai Wan Campus  
Kindergarten, Harmony Garden, 9 Siu Sai Wan Rd, Chai Wan  
Clearwater Bay Campus  
Level 7, Silverstrand Mart, Clear Water Bay Rd, Clear Water Bay, Sai Kung  
Guidepost Family Club Causeway Bay  
G02-G03, Leighton Centre, 77 Leighton Rd, Causeway Bay  
Discovery Bay Campus  
1-06, 1/F, 92 Siena Avenue, Discovery Bay North, Discovery Bay  
Happy Valley Hawthorn Road Campus  
2 Hawthorn Road, Happy Valley  
Happy Valley Sing Woo Road Campus  
1/F, Happy Court, 39E Sing Woo Rd, Happy Valley  
Kennedy Town Campus  
1-2 Floor 554-560 Queen's Road West Sai Wan, Shek Tong Tsui  
Mid-Levels Campus (opening in August 2024)  
On Fung Building, 110-118 Caine Road, Mid-Levels, Hong Kong  
Pok Fu Lam Campus  
L101 Chi Fu Landmark, Chi Fu Fa Yuen, Pok Fu Lam  
Repulse Bay Campus (opening in August 2024)  
2/F, 35 Beach Road Repulse Bay, Hong Kong  
Sai Kung Campus (opening in August 2024)  
Shop D, G/F, Marina Cove Shopping Centre, Sai Kung, N.T., Hong Kong  
Academy of Innovation Primary School  
77 Caroline Hill Road, Causeway Bay  
**Tel:** 9126 6211  
**Email:** admissions@guidepost.hk  
**Website:** guidepost.hk

### Hamilton Hill International Kindergarten

2/F Tang Kung Mansion, 31 Tai Koo Shing road. Tai Koo  
**Tel:** 2567-5454  
**Website:** www.hhik.edu.hk

### Han Academy

G/F-2/F, 33-35 Wong Chuk Hang Road, Aberdeen  
**Tel:** 3998 6300  
**Email:** admission@hanacademy.edu.hk  
**Website:** www.hanacademy.edu.hk  
**Year Founded:** 2017  
**Curriculum:** Cambridge (Primary, Secondary, IGCSE, A Level), IBDP (candidate school)

### Harrow International School Hong Kong

38 Tsing Ying Road, Tuen Mun  
**Tel:** 2824 9099  
**Email:** admissions@harrowschool.hk  
**Website:** www.harrowschool.hk  
**Year founded:** 2012  
**Curriculum:** International

### Highgate House School

2/F, 100 Peak Road, The Peak  
**Tel:** 2849 6336  
**Website:** www.highgatehouse.edu.hk  
**Year founded:** 1992  
**Curriculum:** Waldorf



### HKCA Po Leung Kuk School

62 Tin Hau Temple Road, Hong Kong  
**Tel:** 3465 8400  
**Email:** info@plkis.edu.hk  
**Website:** www.plkis.edu.hk  
**Year Founded:** 2017  
**Curriculum:** IBPYP

### Hong Kong Academy

33 Wai Man Road, Sai Kung  
**Tel:** 2655 1111  
**Email:** admissions@hkacademy.edu.hk  
**Website:** www.hkacademy.edu.hk  
**Year founded:** 2000  
**Curriculum:** IBPYP, IBMYP, IBDP



### Hong Kong Adventist Academy

1111 Clear Water Bay Road, Sai Kung  
**Tel:** 2623 0034  
**Email:** info@hkaa.edu.hk  
**Website:** www.hkaa.edu.hk  
**Year founded:** 2011  
**Curriculum:** Local curriculum with electives from the American curriculum

### Hong Kong Chinese Christian Churches Union Logos Academy

**Campus I**  
No. 5, Ling Kwong Street, Tseung Kwan O, N.T.  
**Tel:** 2337 2126  
**Campus II**  
No. 1, Kan Hok Lane, Tseung Kwan O, N.T.  
**Tel:** 2337 2123  
**Email:** info@logosacademy.edu.hk  
**Website:** www.logosacademy.edu.hk  
**Year founded:** 2011  
**Curriculum:** HKDSE, IBDP

### Hong Kong International Learning Academy

Unit 7 & 8G Office Block One, North Plaza, 92 Siena Avenue, Discovery Bay  
**Tel:** 2416 3198  
**Email:** hkilacademy@gmail.com  
**Website:** https://www.studyhkila.com

### Hong Kong International School

**Tai Tam Campus**  
1 Red Hill Road, Tai Tam  
**Tel:** 3149 7000  
**Repulse Bay Campus**  
23 South Bay Close, Hong Kong  
**Tel:** 2812 5000  
**Email:** admissions@hkis.edu.hk  
**Website:** www.hkis.edu.hk  
**Year founded:** 1966  
**Curriculum:** American with Advanced Placement courses offered in High School

### Hong Kong Man Sang Kindergarten

**Western District**  
Shop A, G/F & 1/F, Nice Garden, 513-519 Queen's Road West  
**Tel:** 2336 3232  
**Website:** www.mansangkg.edu.hk  
**Year Founded:** 2016  
**North Point**  
2/F Foo Yet Kai Building, 52-60 Java Road, North Point  
**Tel:** 2578 6763  
**Website:** www.mansangkg.edu.hk  
**Year Founded:** 1969  
**Email:** admission@mansangkg.edu.hk

### Hong Kong Nobel Preschool

G/F-2/F, 65 Waterloo Road, Kowloon  
**Tel:** 2338 7899  
**Website:** www.nobelpreschool.org  
**Year Founded:** 2015

### ICHK Hong Lok Yuen (Kindergarten and Primary)

3, Twentieth Street, Hong Lok Yuen, Tai Po, New Territories, Hong Kong  
**Tel:** (852) 3955 3000  
**Email:** admissions@ichkhly.edu.hk

### International Christian School

**Shek Mun Campus**  
1 On Muk Lane, Shek Mun  
**Tel:** 3920 0000  
**Ma On Shan Campus (International Kindergarten)**  
G/F, Kam Ho House (Block H), Kam Fung Court, Ma On Shan, Shatin, N.T.  
**Email:** ics@ics.edu.hk  
**Website:** www.ics.edu.hk  
**Year founded:** 1991  
**Curriculum:** American, AP

### International College Hong Kong (Secondary)

60 Sha Tau Kok Road, Shek Chung Au, Sha Tau Kok  
**Tel:** 2655 9018  
**Email:** info@ichk.edu.hk  
**Website:** www.ichk.edu.hk  
**Year founded:** 1984  
**Curriculum:** IBPYP, English, IGCSE, IBDP

### International College Hong Kong

**Hong Lok Yuen (Kindergarten & Primary)**  
3, Twentieth Street, Hong Lok Yuen, Tai Po  
**Tel:** 3955 3000  
**Email:** info@ichkhly.edu.hk  
**Website:** www.ichk.edu.hk  
**Year founded:** 1984  
**Curriculum:** IBPYP, English, IGCSE, IBDP

### Invictus School Hong Kong

**Tseung Kwan O Campus (Kindergarten & Primary)**  
Monterey Place, 23 Tong Chun Street, Tseung Kwan O  
**Tel:** 3643 1868  
**Email:** admissions@invictus.edu.hk  
**Chai Wan Campus (Secondary)**  
188 Tai Tam Road, Chai Wan  
**Tel:** 3852 7200  
**Email:** admissions.chaiwan@invictus.edu.hk  
**Website:** www.invictus.edu.hk



### Island Children's Montessori Kindergarten

**Tin Hau Campus**  
Units B & C, LG/F & UG/F, 16 Tin Hau Temple Road, Tin Hau  
**Lei King Wan Campus**  
Shop GC 19-21 Site C, Tai Hong Street, Lei King Wan  
**Tel:** 3421 9100  
**Email:** admissions@icms.edu.hk

### Island Montessori International Kindergarten

**North Point Campus**  
Commercial Unit, G/F, Bedford Gardens, 151-173 Tin Hau Temple Road, North Point, HK  
**Tel:** 3427 9100  
**Email:** info@icms.edu.hk  
**Website:** www.icms.edu.hk  
**Year founded:** 2010  
**Curriculum:** Montessori  
**Lei King Wan Campus**  
Shop GC 19-21, G/F, Lei King Wan, Site C, 35 Tai Hong Street, Sai Wan Ho  
**Tel:** 2562 8500  
**Website:** http://icms.edu.hk  
**Year Founded:** 2012

### Island Waldorf School

**Primary & middle school**  
1/F 455 Queen's Road West, Sai Wan, Hong Kong  
**Kindergarten**  
G/F 71-77 Smithfield, Kennedy Town, Hong Kong  
**Outdoor Activities Centre**  
Ka Nam New Village, Lamma Island  
**Tel:** 5114 1451  
**Email:** info@iws.edu.hk  
**Website:** www.iws.edu.hk

### Italian International Kindergarten

Podium Level 1, Block 4, Phase 1, South Horizons, Ap Lei Chau, Hong Kong  
**Tel:** 2662 3066  
**Email:** info@iikg.edu.hk  
**Website:** www.iikg.edu.hk  
**Year Founded:** 2019

### Japanese International School (International Section)

4663 Tai Po Road, Tai Po  
**Tel:** 2834 3531  
**Email:** esinfo@jis.edu.hk  
**Website:** es.jis.edu.hk  
**Year founded:** 1997  
**Curriculum:** IB Primary Years Programme

### Kellett School

**Kowloon Bay Preparatory and Senior Campus**  
7 Lam Hing Street, Kowloon Bay  
**Po Fu Lam Preparatory Campus**  
2 Wah Lok Path, Wah Fu, Pok Fu Lam, Hong Kong  
**Tel:** 3120 0700  
**Email:** admissions@kellettschool.com  
**Website:** www.kellettschool.com  
**Year founded:** 1976  
**Curriculum:** English National Curriculum including IGCSE and A-level

### Kendall International Preschool

G/F, Residence 228, 228 Fuk Wing Street, Cheung Sha Wan, West Kowloon, Hong Kong  
**Tel:** 2328 8223  
**Email:** info@kendallpreschool.edu.hk  
**Website:** www.kendall.edu.hk/  
**Year Founded:** 2017  
**Curriculum:** Own

### Kiangsu & Chekiang Primary School & Kiangsu-Chekiang College (International Section)

**Lower School**  
30 Ching Wah Street, North Point, Hong Kong  
**Tel:** 2570 4594  
**Upper School**  
20 Braemar Hill Road, North Point  
**Tel:** 2570 1281  
**Email:** inter@kcis.edu.hk (Primary)  
**Email:** inter2@kcis.edu.hk (Secondary)  
**Website:** www.kcis.edu.hk  
**Year founded:** 1993  
**Curriculum:** Early Years Foundation Stage (EYFS); British National Curriculum; IB Diploma

### Kingston International Kindergarten and Children Centre

G/F & 1/F, 12-14 Cumberland Road, Kowloon Tong  
**Tel:** 2337 9049  
**Email:** enquiry@kingston.edu.hk  
**Website:** www.kingston.edu.hk  
**Curriculum:** IB Primary Years Programme

### Kingston International School

**Lower Primary Campus**  
113 Waterloo Road, Kowloon Tong, Kowloon  
**Tel:** 2337 9031  
**Upper Primary Campus**  
105 Waterloo Road, Kowloon Tong, Kowloon  
**Tel:** 2337 9012  
**Email:** enquiry@kingston.edu.hk  
**Website:** www.kingston.edu.hk  
**Curriculum:** IB Primary Years Programme

### Kohitsuji Kindergarten

Shop 1, G/F, Site 10, Whampoa Garden, Hung Hom  
**Tel:** 2330 6677  
**Website:** www.kohitsujiyouchien.com  
**Year Founded:** 2013

### Kornhill International Nursery (Kornhill Anglo Chinese Kindergarten)

G/F 16 Hong Shing Street, Kornhill, Quarry Bay, HK  
**Tel:** 2884 4186  
**Email:** admin@kornhill-edu.com  
**Website:** www.kornhill-edu.com  
**Year Founded:** 1986  
**Curriculum:** Teaching Strategies. The Creative Curriculum for Preschool

### Korean International School

55 Lei King Road, Sai Wan Ho, Hong Kong  
**Tel:** 2569 5500  
**Email:** admissions@kis.edu.hk  
**Website:** www.kis.edu.hk  
**Curriculum:** IPC, UK, IGCSE, A-Levels, Korean



### Kowloon Baptist Church Kindergarten

G/F, 45-47 Grampian Road, Kowloon  
**Tel:** 2336 6213  
**Email:** admission@kbck.edu.hk  
**Website:** www.kbck.edu.hk

### Kowloon Cannan Anglo-Chinese Kindergarten

G/F, 28B Grampian Road, Kowloon Tong  
**Tel:** 2336 2096  
**Website:** www.cannan.edu.hk  
**Year Founded:** 1983

### Lady Eleanor Holles International School Foshan

26 Jingping Road, Chancheng District 528000, Foshan  
**Tel:** +86 757 2992 8101  
**Email:** admissions@leh-foshan.cn  
**Website:** http://www.leh-foshan.cn/

### Lantau International School

**Cheung Sha Campus**  
No. 22, Upper Cheung Sha Village, Lantau Island, Hong Kong  
**Tel:** 2984 0302  
**Tong Fuk Campus**  
House 113, Tong Fuk Village, Lantau, Hong Kong  
**Tel:** 2980 3676  
**Pui O Campus**  
No. 17-19, Lo Wai Tsuen, Pui O, Lantau Island, Hong Kong  
**Tel:** 2984 0302  
**Email:** lisadmin@lis.edu.hk  
**Website:** www.lis.edu.hk  
**Year founded:** 1995  
**Curriculum:** British Curriculum

### Leapfrog Kindergarten and Playgroup

11 Pak Tam Chung Village, Sai Kung Country Park, Sai Kung  
**Tel:** 2791 1540  
**Email:** admim@leapfrogkindergarten.org  
**Website:** www.leapfrogkindergarten.org  
**Year founded:** 1992  
**Curriculum:** EYFS

### Learning Habitat Kindergarten

**Hampton Loft Campus**  
Shop 2, 5/F Hampton Loft, 11 Hoi Fan Road, Tai Kok Tsui  
**Tel:** 2501 5105  
**Website:** www.learninghabitat.org  
**Year Founded:** 2005  
**Papillons LP Campus**  
Shop 12, 15 & 16, G/F Papillons Square, 21 Tong Chun Street, Tseung Kwan O  
**Tel:** 2363 3005  
**Website:** www.learninghabitat.org  
**Year Founded:** 2010

### Les Petits Lascars French International Preschool

**Central Campus**  
2 & 3/F, Wellington Plaza, 56-58 Wellington Street, Central  
**Tseung Kwan O Campus**  
G01, Capri Place, 33 Tong Yin Street, Tseung Kwan O  
**Wong Chuk Hang Campus**  
Units 306-307, 3/F, One Island South, 2 Hung Yip Road, Wong Chuk Hang  
**Tel:** 2526 8666  
**Email:** admissions@petitslascars.com  
**Website:** hkkidsacademy.edu.hk/les-petits-lascars  
**Year founded:** 2006  
**Curriculum:** French

### Li Po Chun United World College

10 Lok Wo Sha Lane, Sai Sha Road, Shatin  
**Tel:** 2640 0441  
**Email:** office@lpcuwc.edu.hk  
**Website:** www.lpcuwc.edu.hk  
**Year founded:** 1992  
**Curriculum:** IBDP



**Little Lantau Montessori Kindergarten**  
Unit 12 & 13, G/F, Silverview Centre,  
8 Ngan Kwong Wan Road, Mui Wo, Lantau Island  
**Tel:** 3689 7033

### Lou Pichoun French International Preschool Hong Kong

**Tseung Kwan O Campus**  
1A-2A, G/F, Alto Residences,  
29 Tong Yin Street, Tseung Kwan O  
**Tel:** 2813 4277 / 6304 1021  
**Website:** www.loupichoun.com  
**Stanley Campus**  
1/F, 5 Stanley New Street, Stanley, Hong Kong  
**Tel:** 2813 2456  
**Happy Valley Campus**  
G/F Door C, 22 Fung Fai Terrace, Hong Kong  
**Tel:** 2813 2456  
**Email:** info@loupichoun.com  
**Website:** www.loupichoun.com  
**Year founded:** 1997  
**Curriculum:** French, Own



### Ludus Kindergarten

2/F, Le Billionnaire,  
46 Sa Po Road, Kowloon City  
**Tel:** 2382 0061  
**Website:** www.ludus.edu.hk  
**Year Founded:** 2015

### MAGART International Kindergarten

**Whampoa Campus**  
Shop G3A, Site 7, Whampoa Garden,  
9 Tak On Street, Hong Kong  
**Tel:** 2786 9314 / 2788 0788  
**WhatsApp:** 9879 1509  
**Email:** info.wp@magartedu.com  
**Kornhill Campus**  
16 Hong Shing St, Kornhill, Quarry Bay, Hong Kong  
**Tel:** 2786 9152 / 2786 9189  
**WhatsApp:** 6717 3175  
**Email:** info.tk@magartedu.com  
**Fanling Campus**  
G/F, Phase 1, Fanling Centre,  
New Territories, Hong Kong  
**Tel:** 2677 8109  
**WhatsApp:** 9445 8322  
**Email:** info.fl@magartedu.com  
**Year Founded:** 2018  
Curriculum: Enhanced EYFS, Reggio Emilia  
and inquiry approach

**Malvern College Hong Kong**  
3 Fo Chun Road, Pak Shek Kok, New Territories  
**Tel:** 3898 4688  
**Email:** admissions@malverncollege.org.hk  
**Website:** www.malverncollege.org.hk  
**Year founded:** 2018  
**Curriculum:** IB



### Malvern College Pre-School Hong Kong Island West

G/F & 1/F Viking Court,  
165-166 Connaught Road West,  
Sai Ying Pun, Hong Kong  
**Tel:** 3898 4670  
**E-mail:** iw-office@malvernpreschool.hk  
**Coronation Circle**  
Units 9-12, Coronation Circle,  
1 Yau Cheung Road, Southwest Kowloon  
**Tel:** 3898 4660  
**E-mail:** office@malvernpreschool.hk  
**Website:** www.malvernpreschool.hk

### Maple Bear Canadian International Kindergarten Hong Kong

Shop 7, G/F, Alto Residences,  
29 Tong Yin Street, Tseung Kwan O  
**Tel:** 2813 4887 / 6848 1264  
**Email:** admissions@maplebear.hk  
**Website:** www.maplebear.hk



### MASS International Preschool

Shop 2, G/F & LG/F, Lai Tak Plaza,  
Tai Hang, Hong Kong  
**Tel:** 3955 1588  
**Email:** info@masspreschool.edu.hk  
**Website:** www.masspreschool.com  
**Year founded:** 2012  
**Curriculum:** Other

### Mighty Oaks Nursery & Kindergarten

1/F, Lungga Mansion, 46A Belcher's Street,  
Kennedy Town, Hong Kong  
**Tel:** 2806 8383  
**Email:** info@mightyoaks.edu.hk  
**Website:** www.mightyoaks.edu.hk  
**Year founded:** 2015  
**Curriculum:** Early Years Foundation Stage

### Ming Wai International Kindergarten

Flat A & B, G/F & 1/F, Alice Court,  
10-12 Tsat Tsz Mui Road, North Point  
**Tel:** 2561 5008  
**Website:** www.mingwai.edu.hk  
**Year Founded:** 1982  
**North Point Branch**  
Shop 1 G/F & 1/F, Fairview Court,  
5-13 Tsat Tsz Mui Road, North Point  
**Prince Edward Branch**  
Shop 6 of G/F & Flat 1-5 of 1/F,  
Kenwood Mansion, 15 Playing Field Road,  
Prince Edward  
**Tel:** 2522 2688

### Mills International Preschool

The Spectacle, 8 Cho Yuen Street,  
Yau Tong, Kowloon, Hong Kong  
**Tel:** 2717 6336  
**Email:** preschool@millsinternational.edu.hk  
**Website:** www.millsinternational.edu.hk  
**Year founded:** 2013  
**Curriculum:** Early Years Foundation Stage

### Montessori for Children

House A, Phoenix Garden,  
RBL 1033 Tai Tam Village, Stanley, Hong Kong  
**Tel:** 2813 9589  
**Email:** hongkong@montessori.edu.sg  
**Website:** www.montessori.edu.sg  
**Year founded:** 1986  
**Curriculum:** Montessori

### Mori Lisa International Kindergarten

Level 5 Flat Roof, Block 7,  
Greenwood Terrace, Chai Wan  
**Tel:** 3176 1236  
**Email:** info@morilisa.hk  
**Website:** www.morilisa.hk  
**Year founded:** 2014  
**Curriculum:** Early Years Foundation Stage

### Morningstar Preschool and Kindergarten

Block 2, G/F, Chi Fu Fa Yuen, Pok Fu Lam  
**Tel:** 6993 7157  
**Email:** hello@morningstarschools.com  
**Website:** www.morningstarpreschool.com.hk  
**Year founded:** 2011  
**Curriculum:** International

### Mui Wo OWLS School & Kindergarten

1/F, Unit A, Silver Centre Building,  
Mui Wo Ferry Pier Road, Mui Wo, Lantau  
**Tel:** 2984 0006  
**Email:** office@muiwoowlsschool.edu.hk  
**Website:** www.muiwoowlsschool.edu.hk  
**Year founded:** 2010  
**Curriculum:** English

### Mulberry House International Kindergarten

**Southside Campus**  
Shops 1 & 2, G/F, Ocean Court,  
3 Aberdeen Praya Road, Aberdeen, HK  
**Tel:** 5598 0555  
**Tai Po Campus**  
LG/F Kindergarten, Mayfair By The Sea I,  
23 Fo Chun Road, Tai Po, HK  
**Tel:** 5598 0909  
**Website:** https://mulberryhousekg.com/

### Munsang College Kindergarten

G/F-1/F, Block A & G/F-2/F, Block F,  
8 Dumbarton Road, Kowloon City  
**Tel:** 3655 3500  
**Website:** www.munsang.edu.hk  
**Year Founded:** 1926

### Mynors International Kindergarten

Portion A, Commercial Unit, Shop 1-11,  
1/F Belair Monte Shopping Centre,  
3 Ma Sik Road, Fanling  
**Tel:** 2355 7500  
**Website:** www.mynors.hk

### Nord Anglia International School Hong Kong

**Early Years Campus**  
285 Hong Kin Road, Tui Min Hoi, Sai Kung, New  
Territories  
**Primary Campus**  
11 On Tin Street, Lam Tin, Kowloon  
**Secondary Campus**  
19 Yuet Wah Street, Kwun Tong, Kowloon  
**Tel:** 3958 1428  
**Email:** admissions@nais.hk  
**Website:** www.nais.hk  
**Year founded:** 2014  
**Curriculum:** English, IGCSE, IBDP

### Norwegian International School Kindergarten Campus

175 Kwong Fuk Road, Tai Po  
**Tel:** 2638 0269  
**Email:** kinder@nis.edu.hk  
**Primary School Campus**  
170 Kam Shan Road, Kam Shan Village, Tai Po  
**Tel:** 2658 0341  
**Email:** office@nis.edu.hk  
**Website:** nis.edu.hk  
**Year founded:** 1984  
**Curriculum:** IPC, UK Literacy Curriculum, Australian  
Mathematics Curriculum

### Oisca Japanese Kindergarten

G/F Ming Yuen Mansion, 26-48 Peacock Road, North  
Point  
**Tel:** 2775 5899  
**Website:** www.oisca-youchien.ne  
**Year Founded:** 1986

### Ontario eSchool

4/F Tower, 6 Bowring St, Jordan  
**Tel:** 2393 8321 / 2393 8312  
**Email:** info@oesasia.org  
**Website:** www.oesasia.org



### Oxbridge School

G/F B & 1F, Star Ruby, 1 San Wai Street,  
Hung Hom, Kowloon  
**Tel:** 2612 1888  
**Email:** admissions@oxbridgeschool.hk  
**Website:** www.oxbridgeschool.hk

### Parkview International Pre-School

Podium Level, Kowloon Station,  
1 Austin Road West, Kowloon  
**Tel:** 2812 6801  
**Email:** pipsinfo-kl@pips.edu.hk  
**Website:** www.pips.edu.hk  
**Year founded:** 2007  
**Curriculum:** International Baccalaureate (IB)

### Parkview Rhine Garden Pre-school

Tower 1, 1st Floor, Rhine Garden,  
38 Castle Peak Road, Sham Tseng, N.T.  
**Tel:** 2491 1082  
**Email:** school@pipsrg.edu.hk  
**Year founded:** 1994

### Parkview-Rhine Garden International Nursery

Tower 5, 1Podium Level 2, Rhine Garden,  
38 Castle Peak Road, Sham Tseng, N.T.  
**Tel:** 2496 2080  
**Email:** school@pipsrg.edu.hk  
**Website:** pipsrg.edu.hk  
**Year founded:** 1994

### Po Leung Kuk Choi Kai Yau School

6 Caldecott Road, Piper's Hill, Kowloon  
**Tel:** 2148 2052  
**Email:** info@cky.edu.hk  
**Website:** www.cky.edu.hk  
**Year founded:** 2002  
Curriculum: Own, IGCSE, IBDP

### Pods Kindergrten & Preschool

**Tin Hau Campus**  
11 Tin Hau Temple Road, Tin Hau, Hong Kong  
**Tel:** 3460 3560  
**Harbour Heights Campus**  
G01B & 1/F, Harbour Heights,  
1 Fook Yum Road, North Point, Hong Kong  
**Tel:** 2242 2261  
**Email:** info@pods.com.hk  
**Website:** www.pods.com.hk  
**Year founded:** 2013  
**Curriculum:** Own

### Renaissance College ESF

5 Hang Ming Street, Ma On Shan  
**Tel:** 3556 3556  
**Email:** admissions@rchk.edu.hk  
**Website:** www.rchk.edu.hk  
**Year founded:** 2006  
**School Type:** Private  
**Curriculum:** IB Primary Years Programme,  
IB Middle Years Programme, IB Diploma,  
IB Career-related Programme

### Rightmind International Nursery & Kindergarten

**Shum Wan Campus**  
G/F, Broadview Court, No. 11 Shum Wan Road,  
Hong Kong  
**Tel:** 2795 1018  
**South Horizons Campus**  
UG/F, Tower 26-28, South Horizons, Phase 4, Ap  
Lei Chau  
**Tel:** 2875 0452  
**Email:** parentservice@kinderu.org  
**Website:** www.rmkg.org  
**Year founded:** 1980  
**Curriculum:** Other

### Rosebud Primary School

UG 28-37 Waterside Plaza, 38 Wing Shun Street,  
Tsuen Wan  
**Tel:** 2406 7300  
**Email:** info@rosebud.edu.hk  
**Website:** www.rosebud.edu.hk  
**Year Founded:** 2004  
**Curriculum:** IPC



### Safari Kid International Kindergarten

**Happy Valley Campus**  
16 Min Fat Street, Happy Valley, Hong Kong  
**Tel:** 2177 0001  
**Email:** happyvalley@safarikidasia.com  
**Pok Fu Lam Campus**  
L101 Chi Fu Landmark, Chi Fu Fa Yuen, Pok Fu Lam  
**Tel:** 2177 0001  
**Email:** infohk@safarikidasia.com  
**Website:** www.safarikidasia.com  
**Year founded:** 2005  
**Curriculum:** Other

### Sai Kung International Pre-school

159 Che Keng Tuk Road, Sai Kung  
**Tel:** 2791 7354  
**Email:** skip@skip.edu.hk  
**Website:** skip.edu.hk  
**Year founded:** 1989  
**Curriculum:** Early Years Foundation Stage

### Sai Kung Montessori

Unit SB, 787 Tan Cheung, Po Tung Road, Sai Kung  
**Tel:** 5369 8587  
**Email:** info@saikungmontessori.com  
**Website:** www.saikungmontessori.com  
**Year Founded:** 2017  
**Curriculum:** Montessori

### Saint Bright International Kindergarten

G/F & 1/F, Cameron Mansion,  
29-31 Lion Rock Road, Kowloon City  
**Tel:** 2337 5255  
**Website:** www.stbrigt.edu.hk  
**Year Founded:** 2014

### Sear Rogers International School

**Tseun Wan Campus**  
Portion A, Podium E, 4/F, Riviera Gardens, Tsuen Wan  
**Tel:** 2547 5479  
**Email:** enquiry@sris.edu.hk  
**Website:** www.sris.edu.hk  
**Year founded:** 1982  
**Curriculum:** English, IGCSE, A-Levels

### SDM-Chatsworth International Kindergarten & Nursery

166 Boundary Street, Kowloon Tong  
**Tel:** 2560 3322  
**Email:** info@sdm-chatsworth.hk  
**Website:** www.sdm-chatsworth.hk  
**Year Founded:** 2017  
**Curriculum:** Singapore-based curriculum

### Shrewsbury International School Hong Kong

10 Shek Kok Road, Tseung Kwan O  
**Tel:** 2480 1500  
**Email:** admissions@shrewsbury.edu.hk  
**Website:** www.shrewsbury.edu.hk  
**Year founded:** 2018  
**Curriculum:** English National Curriculum



### Singapore International School

**Preparatory Years and Primary Section**  
23 Nam Long Shan Road, Aberdeen  
**Tel:** 2872 0266  
**Email:** general@singapore.edu.hk  
**Secondary Section**  
2 Police School Road, Wong Chuk Hang, Hong Kong  
**Tel:** 2919 6966  
**Email:** secondary@singapore.edu.hk  
**Website:** www.singapore.edu.hk  
**Year founded:** 1991  
**Curriculum:** Singapore curriculum, IGCSE, IBDP

### Small World Christian Kindergarten

10 Borrett Road, Mid-Levels  
**Tel:** 2525 0922  
**Email:** office@smallworld.edu.hk  
**Website:** smallworld.edu.hk  
**Year founded:** 1986

### Spanish Primary School

130 Shuen Wan Chan Uk Tai Po, N.T., Hong Kong  
**Tel:** 3955 1588  
**Email:** info@spis.com.hk  
**Website:** www.spis.com.hk

### St. Catherine's International Kindergarten

**Campus 1**  
1 Essex Crescent, Kowloon Tong  
**Tel:** 2337 7273  
**Website:** www.stcatherines.edu.hk  
**Year Founded:** 1970  
**Campus 2**  
4 & 6 Norfolk Road, Kowloon Tong  
**Tel:** 2337 7344 / 2337 7680  
**Website:** www.stcatherines.edu.hk  
**Year Founded:** 1970

### St. Catherine's Kindergarten (Harbour Place)

1/F Harbour Place, 8 Oi King Street, Hung Hom  
**Tel:** 2670 6600  
**Website:** www.stcatherines.edu.hk  
**Year Founded:** 2011

### St. Paul's Covent School (Secondary Section)

140 Leighton Road, Causeway Bay, Hong Kong  
**Tel:** 2576 0601  
**Website:** www.spcs.edu.hk  
**Year founded:** 1854  
**Curriculum:** HKDSE, IGCSE, A-Levels

### St. Stephen's College

22 Tung Tau Wan Road, Stanley, Hong Kong  
**Tel:** 2813 0360  
**Email:** sschk@ssc.edu.hk  
**Website:** www.ssc.edu.hk  
**Year founded:** 1903  
**Curriculum:** IBDP, HKDSE

### Stamford American School Hong Kong

25 Man Fuk Road, Ho Man Tin  
**Tel:** 2500 8688  
**Email:** admissions@sais.edu.hk  
**Website:** www.sais.edu.hk  
**Year founded:** 2017  
**Curriculum:** Inquiry-based American Curriculum with AERO and Common Core Plus Standards

### Sunshine House International Pre-school

**Tung Chung Campus**  
No. 8 Mei Tung Street,  
Tung Chung Crescent, Lantau Island  
**Tel:** 2109 3873  
**Email:** tungchung@sunshinehouse.com.hk  
**Website:** www.sunshinehouse.com.hk  
**Year founded:** 1990  
**Curriculum:** Other

### The Harbour School

**The Grove (Primary Campus)**  
332 Ap Lei Chau Bridge Road, Ap Lei Chau  
**The Garden (Secondary Campus)**  
138 Lee Chi Road, Ap Lei Chau  
**Tel:** 3612 1090  
**Email:** admissions@ths.edu.hk  
**Website:** www.ths.edu.hk  
**Year founded:** 2007  
**Curriculum:** American



### The International Montessori School of Hong Kong

**Aldrich Bay Campus**  
G/F, i-UniQ Grand, 155 Shau Kei Wan Road,  
Shau Kei Wan, Hong Kong  
**Tel:** 2156 9033  
**Email:** admin.ab@ims.edu.hk  
**Mid-Level Campus**  
Mezzanine Entrance, Tung Fai Gardens,  
17 Po Yan Street, Sheung Wan, Hong Kong  
**Tel:** 2857 7007  
**Email:** admin.ml@ims.edu.hk  
South Horizons Campus  
G/F, Blocks 23 to 23A, South Horizons,  
Phase III, Ap Lei Chau, Hong Kong  
**Tel:** 2861 0339  
**Email:** admin.sh@ims.edu.hk  
**Stanley Campus**  
Phase III, Ma Hang Estate,  
Stanley (off Stanley Plaza), Hong Kong  
**Tel:** 2566 7196  
**Email:** admin.st@ims.edu.hk  
**Website:** www.ims.edu.hk  
**Year founded:** 2002  
**Curriculum:** Montessori

### The ISF Academy

1 Kong Sin Wan Road, Pokfulam, Hong Kong  
**Tel:** 2202 2028  
**Email:** admissions@isf.edu.hk  
**Website:** academy.isf.edu.hk  
**Year founded:** 2003  
**Curriculum:** Own, IBMYP, IBDP



### The ISF Pre-School

Shop G01, G/F, 97 Belcher's Street,  
Kennedy Town, Hong Kong  
**Tel:** 2559 8518  
**Email:** psenquiry@isf.edu.hk  
**Website:** preschool.isf.edu.hk  
**Year founded:** 2015  
**Curriculum:** Other

### Think International Academy

11 Kwong Lee Road, Cheung Sha Wan  
**Tel:** 2157 2111  
**Email:** think\_ta@think.edu.hk  
**Website:** www.think.edu.hk  
**Year founded:** 2016  
**Curriculum:** IBPYP, Cambridge CIE Secondary 1 & 2, IBDP

### Think International School

117 Boundary Street, Kowloon Tong, Kowloon  
**Tel:** 2338 3949  
**Email:** think\_tis@think.edu.hk

### Think International Kindergarten

**Kowloon Tong Campus**  
5 Lincoln Road, Kowloon Tong  
**Tel:** 2338 0211  
**Email:** thinkkg\_kt@think.edu.hk  
**Laguna Campus**  
99 Cha Kwo Ling Road G/F, Kowloon  
**Tel:** 2727 4747  
**Email:** thinkkg\_lc@think.edu.hk  
**Ma On Shan Campus**  
Level 2, Sunshine Bazaar,  
628 Sai Sha Road, Ma On Shan, New Territories  
**Tel:** 2633 7800  
**Email:** thinkkg\_mos@think.edu.hk  
**Mei Foo Campus**  
The Podium, Nob Hill, 8 King Lai Path, Mei Foo,  
Kowloon  
**Tel:** 2727 7585  
**Email:** thinkkg\_mf@think.edu.hk  
**Website:** www.think.edu.hk  
Year founded: 2003  
Curriculum: Other

### Topkids International Kindergarten (Yuen Long)

G/F (part of) & 1/F, Shing Fat Building,  
14 Yuen Long Tai Cheung Street, Yuen Long  
**Tel:** 2447 2669  
**Website:** www.topkids.edu.hk

### Tsim Sha Tsui Funful International Kindergarten

No. 136 Nathan Road, Tsim Sha Tsui, Kowloon  
**Tel:** 2311 3883 / 2311 4707  
**Website:** www.funful.hk  
**Year founded:** 1969  
**Curriculum:** Local, International

### Tutor Time International Nursery & Kindergarten

**Kowloon Tong – Dorset Crescent**  
No. 1 Dorset Crescent, Kowloon Tong  
**Tel:** 2573 9188  
**Kowloon Tong – Suffolk Road**  
No. 9 Suffolk Road, Kowloon Tong  
**Tel:** 2529 1188  
**Mid Level – Caine Road**  
Shop A-B, G/F, Botanical Court,  
5 Caine Road, Mid-Levels, Hong Kong  
**Tel:** 2529 2288  
**North Point - Braemar Hill**  
LG/F & G/F Braemar Hill Shopping Center,  
45 Braemar Hill Road, Hong Kong  
**Tel:** 3529 1833  
**Yuen Long – Yoho**  
Shop G011, Ground Level and Mezzanine Level,  
Yoho Mall 1, No. 9 Yuen Lung Street,  
Yuen Long, N.T.  
**Tel:** 2392 8188  
**Email:** info@tutortime.com.hk  
**Website:** www.tutortime.com.hk  
**Year founded:** 2001

### Umah International Primary School

Fung Chi Tsuen, Wang Chau, Yuen Long, N.T.  
**Tel:** 2618 3172 / 2450 5401  
**Email:** umahdin@umahhk.com  
**Website:** umahhk.com  
**Year founded:** 1996  
**Curriculum:** Own

### Victoria Shanghai Academy

19 Shum Wan Road, Aberdeen  
**Tel:** 3402 1000  
**Email:** enquiries@vsa.edu.hk  
**Website:** www.vsa.edu.hk  
**Year founded:** 2004  
**Curriculum:** IBPYP, IBMYP, IBDP



### Victoria Education Organisation

**Belcher Campus**  
Podium of Level 3 (Kindergarten Area),  
The Westwood, 8 Belcher's Street, Hong Kong  
**Tel:** 2542 7001  
**Email:** bgvkoffc@victoria.edu.hk

**Harbour Green Campus**  
G/F, Harbour Green, 8 Sham Mong Road, Kowloon  
**Tel:** 2885 1928  
**Email:** hgvk@victoria.edu.hk

**Harbour Heights Campus**  
Ko Fung Court, Harbour Heights,  
5 Fook Yum Road, North Point, Hong Kong  
**Tel:** 2571 7888  
**Email:** hhvnoff2@victoria.edu.hk

**Homantin Campus**  
1/F, Carmel-on-the-Hill, 9 Carmel Village Street,  
Homatin, Kowloon  
**Tel:** 2762 9130  
**Email:** hmtoffc@victoria.edu.hk

**Lower Kornhill Campus**  
2-8 Hong On Street, Kornhill, Hong Kong  
**Tel:** 2885 3331  
**Email:** lkvkoffc@victoria.edu.hk

**Middle Kornhill Campus**  
2/F, No. 18 Hong On Street, Kornhill, Hong Kong  
**Tel:** 2885 1888  
**Email:** mkvkoffc@victoria.edu.hk

**South Horizons Campus**  
Phase II, Podium Level,  
South Horizons, Hong Kong  
**Tel:** 2580 8633  
**Email:** shvkoffc@victoria.edu.hk

**Upper Kornhill Campus**  
G/F, 14 Hong Yue Street, Kornhill, Hong Kong  
**Tel:** 2513 1208  
**Email:** ukoffc@victoria.edu.hk  
**Website:** www.victoria.edu.hk  
**Year founded:** 1965  
**Curriculum:** IBPYP, TCRWP

**Ocean Pride Campus**  
G36 – G37 & Kindergarten  
G/F, Ocean Pride Mall, 100 Tai Ho Road,  
Tsuen Wan West  
**Tel:** 2186 6222  
**Email:** opvk@victoria.edu.hk

### Wellborn International Pre-school

G/F, Nursery Block,  
Chevalier Garden, Ma On Shan  
**Tel:** 2642 6033  
**Website:** www.wellborn.edu.hk

### Wilderness International Kindergarten

Ground Floor, Po Tak Mansion,  
85 Smithfield Rd, Kennedy Town, Hong Kong  
**Tel:** 2595 9066  
**Email:** admissions@wilderness.asia  
**Website:** www.wilderness.asia  
**Year founded:** 2016

### Wycombe Abbey School Hong Kong

17 Tin Wan Street, Aberdeen, Hong Kong  
**Tel:** 2129 7128  
**Email:** admissions@was.edu.hk  
**Website:** www.was.edu.hk  
**Year Founded:** 2019  
**Curriculum:** National Curriculum for England



### Yew Chung International School (YCIS)

**Secondary Section**  
3 To Fuk Road, Kowloon Tong  
**Primary Section (3 campuses)**  
• 2 Kent Road, Kowloon Tong  
• 11 Kent Road, Kowloon Tong  
• 22 Somerset Road, Kowloon Tong  
**Early Childhood Education (5 campuses)**  
• 29 Kent Road, Kowloon Tong  
• 151 Waterloo Road, Kowloon Tong  
• 3 Somerset Road, Kowloon Tong  
• 20 Somerset Road, Kowloon Tong  
• Savannah Place, 3 Chi Shin Street, Tseung Kwan O  
**Tel:** 2338 7106  
**Email:** admissions@ycef.com  
**Website:** www.ycis-hk.com  
**Year founded:** 1932  
**Curriculum:** International curriculum, IGCSE,  
IB Diploma Programme

### YMCA Christian Academy

70 Bridges Street, Sheung Wan, Hong Kong  
**Tel:** 2537 2552  
**Email:** admission@yca.edu.hk  
**Website:** www.ymca.org.hk

### YMCA of Hong Kong Christian College

2 Chung Yat Street, Tung Chung, Lantau  
**Tel:** 2988 8123  
**Email:** info@yhkcc.edu.hk  
**Website:** www.yhkcc.edu.hk  
**Year founded:** 2003  
**Curriculum:** HKDSE, IGCSE, A-Levels

### YMCA of Hong Kong Christian International Kindergarten

LG/F, 373 Po On Road, Cheung Sha Wan, Kowloon  
**Tel:** 2281 6089  
**Email:** christianikgw@ymcahk.org.hk  
**Website:** ymcahk.org.hk  
**Year founded:** 2003  
**Curriculum:** EYFS, Own

### York International Pre-School (Hong Kong)

1/F & 2/F, Tsui King Court,  
18 Water Street, Sai Ying Pun  
**Tel:** 2368 7038  
**Website:** www.york.edu.hk

### York International Kindergarten

51 Cumberland Road, Kowloon Tong  
**Tel:** 2336 1483  
**Website:** www.york.edu.hk  
**Year Founded:** 1979

### York International Pre-School

G/F & 1/F, 14 Stafford Road, Kowloon Tong  
**Tel:** 2339 0728  
**Website:** www.york.edu.hk  
**Year Founded:** 2012

### York Montessori International Pre-School (Yuen Long)

G/F, Commercial Accommodation,  
No. 18 Castle Peak Road Tam Mei,  
Kam Tin, Yuen Long  
**Tel:** 3485 9268  
**Website:** www.york.edu.hk

### Zebedee International Kindergarten & Nursery

G/F Yat Wing House,  
Yat Nga Court, Nam Wan Road, Tai Po  
**Tel:** 2650 3339  
**Email:** admin@zebedee.edu.hk  
**Website:** www.zebedee.edu.hk  
**Year founded:** 2008  
**Curriculum:** Early Years Foundation Stage

### Zenith Kindergarten (Kowloon Tong)

G/F & 1/F, No. 6 Kent Road, Kowloon Tong  
**Tel:** 2337 3818  
**Website:** www.zenith.edu.hk  
**Year Founded:** 2010

### Ace Academy

22 Essex Crescent, Kowloon Tong  
**Tel:** 2523 5533  
**Email:** info@AceAcademy.com  
**Website:** www.AceAcademy.com

### Aegis Advisors

16/F Vulcan House, 21-23 Leighton Road, Causeway Bay  
**Tel:** 8175 5687  
**Email:** inquiries@aegis-advisors.com  
**Website:** aegis-advisors.com

### Alliance Française de Hong Kong

1&2/F, 123 Hennessy Road, Wan Chai  
**Tel:** 2527 7825  
**Email:** wanchai@afhongkong.org  
**Website:** www.afhongkong.org

### British Council

3 Supreme Court Road, Admiralty  
**Tel:** 3913 5100  
**Email:** enquiries@britishcouncil.org.hk  
**Website:** www.britishcouncil.hk

### Camp Asia

25 Man Fuk Road, Ho Man Tin  
**Tel:** 3467 4567  
**Email:** info@campasia.hk

### Capstone Prep Education Center

**Secondary Section**  
2/F, One Hysan Avenue, Causeway Bay, Hong Kong  
**Tel:** 2893 6060  
**Email:** info@capstoneprep.com  
**Website:** www.capstoneprep.com

### Centre of Learning and Life Enhancement Hong Kong Y.W.C.A.

3/F No 1 MacDonnell Road, Central  
**Tel:** 3476 1345  
**Website:** http://clle.ywca.org.hk/  
**Facebook:** https://www.facebook.com/YWCA.CELE

### CICERO Study Solutions

**Tel:** 9850 4764  
**Email:** info@cicero.com.hk  
**Website:** www.cicero.com.hk

### Croatia Travel

**Tel:** 2370 1600/6037 8797  
**Email:** info@croatia.com.hk  
**Instagram:** croatiatravelhongkong  
**Website:** www.croatia.com.hk

### Encode Education

G26B, Monterey Place, 23 Tong Chun Street,  
Tseung Kwan O  
**Tel:** 2388 9985  
**Email:** info@encode-world.com  
**Website:** www.encode-world.com

### Eye Level Hong Kong

Unit 601, Island Place Tower,  
510 Kind's Road, North Point  
**Tel:** 2104 0188  
**Email:** hongkong@myeyelevel.com  
**Website:** www.myeyelevel.com

### Foundation Global Education

13/F, Chinachem Hollywood Centre,  
1 Hollywood Road, Central, Hong Kong  
**Tel:** 3107 8810  
**Email:** info@foundationge.com  
**Website:** www.foundationge.com

### GAPSK

Room 1803, 18/F, Hollywood Plaza,  
No. 610 Nathan Road, MongKok, Kowloon  
**Tel:** 3101 0800  
**Email:** info@gapsk.org  
**Website:** www.gapsk.org

### Genius Development Workshop and Sciencetech Future

Shop 401, 404, 406 & 412, Level 4, The Arcade,  
100 Cyberport Road, Hong Kong  
**Tel:** 2338 9877  
**WhatsApp:** 6351 8779

**Kowloon Tong Campus**  
No. 10 Somerset Road,  
Kowloon Tong, Hong Kong  
**Tel:** 2180 9249  
**WhatsApp:** 539 54669

**Redhill Campus**  
Shop G22, G/F, Redhill Plaza, No.3 Redhill Road,  
Tai Tam, Hong Kong  
**Tel:** 3169 0136  
**WhatsApp:** 6972 8275

**The Peak Campus**  
Shop 2, G/F, 2-4 Watford Road, The Peak, Hong Kong  
**Tel:** 2180 9249  
**WhatsApp:** 6979 8858  
**Email:** info@streams.hk  
**Websites:**  
<https://www.geniusdevelop.com/>  
<https://www.sciencetechfuture.com/>

### Goethe-Institut Hong Kong

14/F HK Arts Centre, 2 Harbour Road,  
Wanchai, Hong Kong  
**Tel:** 2802 0088  
**Email:** info-hongkong@goethe.de  
**Website:** goethe.de

### Hong Kong Golf & Tennis Academy

81 Tai Chung Hau, Sai Kung  
**Tel:** 3187 8900  
**Email:** enquiry@hkgta.com  
**Website:** www.hkgta.com/

### InNordics

Shop 111, Savannah Place, 3 Chi Shin Street,  
Tseung Kwan O, Hong Kong  
**Tel:** 6083 3531  
**Email:** info@innordics.com  
**Website:** www.innordics.com



**K-Academy Learning Centre**  
Aberdeen Centre  
Shop 3A, 1/F, Site 1, Aberdeen Centre  
Aberdeen  
**Tel:** 2355 7557

**Koding Kingdom**  
Unit 817, 8/F, Data Technology Hub,  
Tseung Kwan O Industrial Estate,  
5 Chun Cheong Street, Tseung Kwan O  
**Tel/Whatsapp:** 9224 6986  
**Email:** info@kodingkingdom.com  
**Website:** www.kodingkingdom.com

**KUMON Education Centre**  
Room 3403-3408, 34/F, Chubb Tower, Windsor  
House, 311 Gloucester Road, Hong Kong  
**Tel:** 2890 6533  
**Email:** info@kumon.com.hk  
**Website:** kumon.com.hk

**Lee Educational Consulting**  
Unit 705, 7th Floor, Star House,  
No. 3 Salisbury Road, Tsim Sha Tsui  
**Mobile:** 9416 0798  
**Wechat:** ljasonkh  
**Website:** www.leeeducation.com

**Mathconcept Learning Center**  
Park Central Shopping Arcade,  
Tseung Kwan O  
**Tel:** 2796 3399  
**WhatsApp:** 2788 1188  
**Website:** www.mathconcept.com

**Michelle Painted Art Studio**  
Room 9C, 9/F Keader Centre,  
129 Yuen Long On Lok Road, Yuen Long, N.T.  
**Tel:** 6531 2750  
**Email:** catfung49@gmail.com  
**Facebook:** Michelle Painted Art (藝與禪)  
**Instagram:** facepainter\_michelle

**Mini Mandarins Learning Centre**  
Causeway Bay Centre  
7/F, Capital Commercial Building,  
26 Leighton Road, Causeway Bay  
**Tel:** 2320 1128  
**Email:** info@minimandarins.com  
Central Centre  
Room 1703 17/F Universal Trade Centre,  
No. 3-5A Arbuthnot Road, Hong Kong  
**Tel:** 2320 5208  
**Email:** central@minimandarins.com  
**Website:** www.minimandarins.com  
**Year founded:** 2014

**Monkey Tree English Learning Center**  
(Head Office)  
Room 2801, 28/F Citicorp Centre,  
18 Whitfield Road, Hong Kong  
**Tel:** 3563 6771  
**Email:** enquiry@monkeytree.com.hk  
**Website:** www.monkeytree.com.hk

**Novalearn**  
Unit 3, 16/F, W50,  
50 Wong Chuk Hang Road, Wong Chuk Hang  
**Tel:** 2268 0084  
**Email:** hello@novalearn.org  
**Website:** www.novalearn.org

**NTK Academic Group**  
Main Campus  
3-5/F & 7/F (Front office),  
Lee Garden Five, 18 Hysan Avenue, Causeway Bay  
**Tel:** 2577 7844  
**Email:** enquiry@ntk.edu.hk  
Kowloon Campus  
2/F, the Avery, 16 Hau Wong Road, Kowloon City  
**Tel:** 2718 3000  
**Email:** enquiry@ntk.edu.hk  
**Website:** www.ntk.edu.hk  
**Year founded:** 1996  
**Curriculum:** SAT, AP, TOEFL, IB, IELTS

**Spanish World Leading Language Group**  
404, 4/F Lap Fai Building,  
6-8 Pottinger Street, Central, Hong Kong  
**Tel:** 2526 9927  
**Email:** hk@spanishworldgroup.com  
**Website:** www.spanishworld.hk

**The Edge Learning Center**  
Causeway Bay  
2F, Zoroastrian Building,  
101 Leighton Road, Causeway Bay  
**Tel:** 2972 2555  
**Email:** info@theedge.com.hk  
**Website:** www.theedge.com.hk

**The Genius Workshop**  
Happy Valley Center  
Unit B, 1/F, Southern Pearl Court,  
151 Wong Nai Chung Road,  
Happy Valley, Hong Kong  
**Tel:** 2591 0100  
Taikoo Center  
Unit 1001, Podium, Hang Sing Mansion,  
3 Tai Wing Avenue,  
Quarry Bay, Hong Kong  
**Tel:** 2591 0009  
Whampoa Center  
Shop 25, G/F, Site 12, The Whampoa,  
Hung Hom, Kowloon  
**Tel:** 3526 0701  
**Whatsapp:** 6211 1968  
**Email:** info@g-workshop.com  
**Website:** http://www.g-workshop.com/



**YLPSK**  
Suite 2611, L26, Office Tower, Langham Place,  
8 Argyle Street, Mong Kok, Kowloon  
**Tel:** 3977 1577  
**Email:** info@ylpsk.org  
**Website:** www.ylpsk.org

**YWCA International Kids Club**  
3/F, No. 1 Macdonnell Road, Mid-Levels, HK  
**Tel:** +852 3476 1340  
**Email:** clle@ywca.org.hk  
**Website:** clle.ywca.org.hk



**SAI WAN HO**  
5 minute walk from  
the MTR station

CAMPUS

#WEAREKIS

# BRITISH CURRICULUM ACADEMIC EXCELLENCE SINCE 1994

ALL THROUGH SCHOOL | RECEPTION TO YEAR 13 | AGES 4-18



Academic  
Excellence



International  
Environment



Innovative  
Teaching  
Methods



Extra-Curricular  
Activities



Supportive  
Learning  
Environment



Competitive  
Tuition Fees

NO CAPITAL LEVY OR COMPULSORY DEBENTURES



KOREAN INTERNATIONAL SCHOOL

find **PASSION** foster **VISION** encourage **ACTION**

**ADMISSIONS  
APPLY NOW**

**ADMISSIONS FEE  
WAIVED  
FOR RECEPTION &  
YEAR 1**

For enquiries, please email: [enquiry@kis.edu.hk](mailto:enquiry@kis.edu.hk), call +852 2569 5500 or visit our website: [www.kis.edu.hk](http://www.kis.edu.hk)





WYCOMBE ABBEY SCHOOL  
HONG KONG

# Premier British Prep School

Your Gateway  
to Prestigious Boarding Schools  
in the United Kingdom and  
Top Secondary Schools in Hong Kong



Excellent Mandarin and  
Cultural Curriculum



Bespoke Secondary School  
Guidance Programme



Cutting-edge  
iSTEAM Syllabus

## Where Our Graduates Go



- ↘ Wycombe Abbey UK
- ↘ Abingdon School
- ↘ Badminton School
- ↘ Benenden School
- ↘ Caterham School
- ↘ Cheltenham Ladies' College
- ↘ Lancing College
- ↘ Roedean School
- ↘ Rugby School
- ↘ Sherborne Girls
- ↘ Woldingham School
- ↘ Westonbirt

Admissions Open from Aged 5 – 13