

International Schools Guide





NORD ANGLIA
INTERNATIONAL SCHOOL
HONG KONG

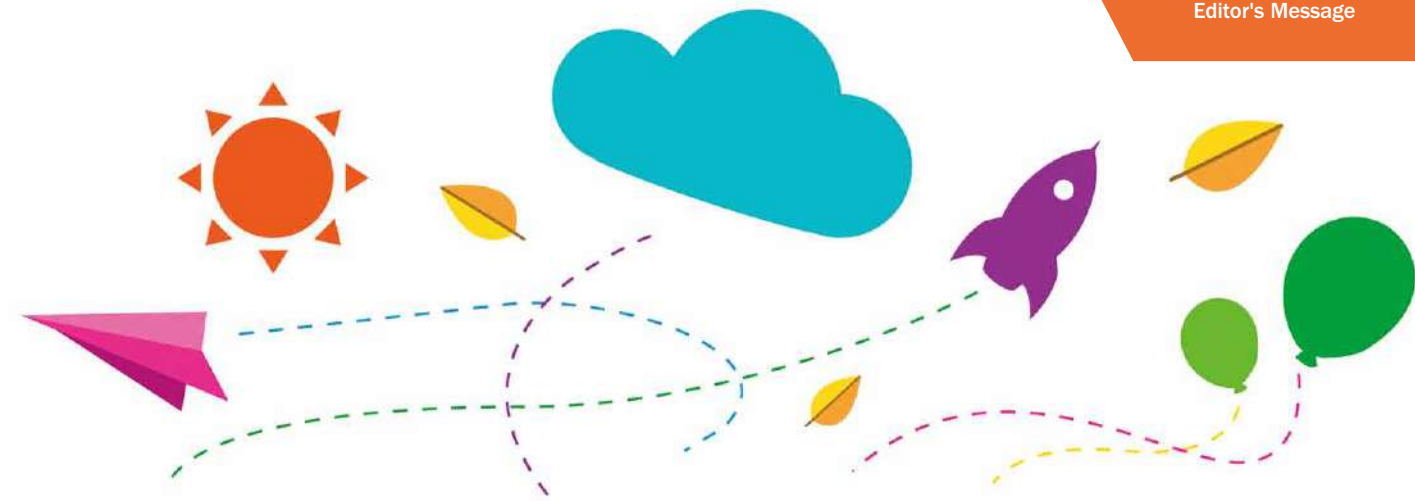
G
R
E
A
T
T
H
I
N
K
E
R
S

*Where great thinkers
are made*

At NAIS Hong Kong, we educate your child for the future. We bring a new approach to the interdisciplinary subjects of STEAM (science, technology, engineering, arts, and mathematics), putting your child at the forefront of developing skills for the 21st century.

Our two Early Years campuses and one Primary & Secondary campus, in well-appointed locations across the city, provide children from 3 to 18 years with a highly personalised and progressive education.

Find out how your child can succeed inside and beyond the classroom at NAIS.hk



International schools tick the boxes

It is a widely acknowledged fact that a holistic education is more effective in nurturing children to become intelligent, all-rounded whole persons who can realize their full potentials.

Parents' general dissatisfaction with the mainstream education system is reflected vividly in the growing popularity of international schools where the emphasis is on quality as opposed to quantity in both teaching and learning. While traditional schools concentrate on dishing out information en masse to complete a demanding syllabus, international schools provide the facilities, the environment, and the support for students to seek the knowledge and answers for themselves.

International schools offer a welcome alternative because of their broader curriculum and well-researched teaching methodology. In addition to academic pursuits, their students learn to expand their perspective, hone

their communication skills with people of different backgrounds, and develop into creative and independent problem-solvers, as well as caring global citizens.

The results are plain for all to see. The language proficiency, self-confidence, and reasoning power of international school children stand them in good stead for further education whether locally or overseas, and for their long-term development and advancement in society.

This guidebook contains the most updated information on international schools, and provides answers to a comprehensive range of questions to help you make the optimum choice for your children.

Andy
Features Editor



Fostering personal growth and development through the arts

Expressive Arts is a popular discipline of helping and healing that uses the arts as the basis for discovery and change. This non-verbal approach has proven to have a positive impact on students' well-being, especially for children with language difficulties.

All too often, introverted students or those with special educational needs (SEN) will find it hard to adapt to the school environment and get along with their peers, as they lack the skills to express themselves.

In this regard, the presence of expressive arts programs and activities at school has proven to be the key to boost the efficacy of communication among students and teachers, as well as creating an inclusive learning environment.

Acting as a bridge of communication, expressive arts combines visual arts, movement, music, drama, writing and other creative processes to foster better personal growth and development.

The art of communication

Expression through a variety of creative media such as storytelling, drama, and creative movement helps children explore their thoughts and emotions. It also helps them release complicated feelings more positively and naturally, thereby boosting their communication and self-regulation skills.

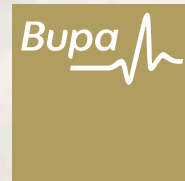
Recent research in Hong Kong shows that children had higher social competency scores after taking part in the

expressive arts programmes, suggesting that they felt more confident around other children and were more willing to interact with others.

Titled 'Jockey Club Expressive Arts Programme for Children', the research is funded by The Hong Kong Jockey Club Charities Trust and took place from July 2017 to January 2021.

"Through this programme, we've witnessed the enormous benefits that expressive arts can have on the vital relationships between children and their caregivers and teachers," says Tiffany Pinkstone, Managing Director of The Sovereign Art Foundation

"We hope by sharing these results and testimonials, we can help promote a wider understanding of the importance of art as a tool for communication and the importance of a holistic education for our children," she adds.



WITH YOU AT EVERY TURN

Bupa Global Health Plan Protecting you now and beyond

- Rest easy knowing your children will enjoy the same level of cover at no extra cost*
- Enjoy the reassurance of day-to-day protection and preventive health checks

Call **+852 2531 8560**
bupaglobal.com/hk



* Subject to underwriting

Terms and conditions apply, please visit bupaglobal.com for full details on the insurance plans. The plans are insured by Bupa (Asia) Limited and administered by Bupa Global. Bupa Global is a trading name adopted by Bupa (Asia) Limited in relation to its portfolio of International Private Medical Insurance products and services. Bupa (Asia) Limited is authorised and regulated by the Hong Kong Insurance Authority. This material shall not be construed as an offer to sell or solicitation to buy or provision of any insurance product outside Hong Kong.

Learning through the arts

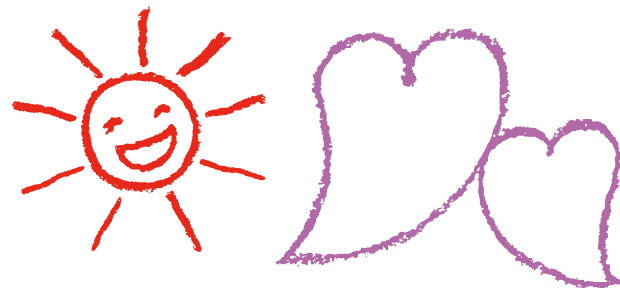
More than a form of entertainment or a hobby, art is also a powerful tool for education. Whichever art form is being utilized, deep thinking and strong senses are often required.

Both art and play offer information from the right brain, which holds the holistic, intuitive, visual and affect-derived intelligence, in contrast to the left brain that holds more linear, linguistic and mathematical intelligence.

Thus, learning arts can foster children's creative development and assist in advancing and refining core skills like imagination. Furthermore, arts can help develop children's cognitive and critical thinking abilities, including thinking, reasoning, understanding, learning, and remembering.

Taking an example of performing arts like dance and drama, students are given chances to learn valuable skills that are hard to acquire in everyday studies, such as public speaking, verbal skills and emotional intelligence.

Additionally, this also provides a chance for physical engagement which can improve student's concentration in the classroom, especially for students at the elementary level. What's more, students can achieve a sense of accomplishment through performance, thereby boosting their self-confidence.



Development of social skills

Good social skills are critical to achieving a successful life as they can influence school performance, peer relationship and even future job prospects. Arts have a powerful way of bringing people together, as many of the activities can be practised in groups. This gives children the opportunity to interact with different people and learn how to appreciate the difference between people.

As children have to work and collaborate as a team, they will able to learn how to share and accept responsibility when interacting with others, which contributes to the development of social skills as well as encouraging relationship and trust.

In addition to social skills, arts also build students' empathy. Recognized as a core life skill, empathy refers to the ability to imagine what someone else might be thinking or feeling.

The expressive arts allow students to see things via the eyes of others in a play, book or film, putting themselves in others' shoes to gain a better understanding of people's emotions and experiences. It has been proven that for those who are empathic, they are able to cope with conflict and difficult social situations, and less likely to engage in bullying behaviours.



KOREAN INTERNATIONAL SCHOOL
International Section

- Diversity
- Teamwork
- Excel



APPLICATIONS
OPEN

Why choose Korean International School?

- COZY FAMILY ATMOSPHERE
- LOW STUDENT-TO-TEACHER RATIO
- HAPPY CHILDREN
- MULTICULTURAL ENVIRONMENT
- BUILDING LEADERS OF TOMORROW

FOR MORE INFORMATION
PLEASE CALL US (852) 2569 5500

55 Lei King Road, Sai Wan Ho, Hong Kong
www.kis.edu.hk



Contents

1

Editor's Message
International schools tick the boxes

2

Feature
Fostering personal growth and development through the arts

11

Yew Chung International School
An Evolving Curriculum: YCIS empowers students to lead in learning communities

12

Yew Chung International School
What is an Emergent Curriculum?

14

Top Schools
Debentures 101

16

Malvern College Hong Kong
An education of heart and mind

18

Hong Kong Academy
Bringing out the best in every child

20

Nord Anglia International School Hong Kong
Thinking beyond traditional education to transform learning

22

MAGART International Kindergarten
Academic scholarships: embracing multiculturalism and supporting children's wellbeing

24

American School Hong Kong
Providing a holistic American education



APPLICATIONS OPEN

Spaces available for August 2021 start date

Rigorous International Education

HKA is one of only seven fully authorised IB World Schools in Hong Kong. Most of our students graduate with three Diploma credentials and successfully secure international university qualifications and employment in a wide range of professions.

Pathways to Individual Excellence

Our highly engaged faculty nurture the interests, strengths and ambitions of every HKA student. We challenge our learners to explore new perspectives and build a strong sense of purpose as global citizens.

Captivating Learning Environment

The award winning campus and exceptional virtual spaces are designed as a sustainable learning lab to stimulate innovation, inspire curiosity and promote community wellbeing.

Dynamic Learning Community

HKA cultivates a multicultural, caring and diverse community. We offer means tested financial assistance and welcome year round applications and enrolment.



Contents

26

Bloom KKCA Academy
Bloom KKCA Academy:
A bilingual school of innovation

28

Christian Alliance International School
An IB World School preparing students for
overseas education

30

Fairchild Junior Academy / Fairchild Kindergarten
Happiness blooms at Fairchild

32

Christian Alliance P.C. Lau Memorial International School
Cultivate our Learners with the 3Rs - Relational,
Rigorous and Relevant

34

German Swiss International School
An education in the German
International Stream at GSIS

36

Invictus School Hong Kong
Your child's secondary education
begins here

38

The ISF Academy
Cultivating critical thinkers with
the passion to learn

40

Korean International School – International Section
Learning health and wellness from a young age



Malvern's Five Centres of Excellence

Nurturing global citizens from Prep 1 to Upper Sixth

- British-style Pastoral Care
- Enhanced Learning
- Entrepreneurial Education
- Outdoor and Environmental Education
- Global Network

Admissions office:

Tel: 3898 4688 | Email: admissions@malverncollege.org.hk
Address: 3 Fo Chun Raod, Pak Shek Kok, New Territories
www.malverncollege.org.hk

Admissions
overview



Contents

42

Maple Bear Canadian International Kindergarten Hong Kong
The best of Canadian education for a global future

44

Mount Kelly Hong Kong
Laying the foundation for a global British education

46

Oxbridge School
The future is super intelligent

48

Shrewsbury International School Hong Kong
The best primary education in Hong Kong

50

Stamford American School Hong Kong
A milestone year ahead for Stamford American School Hong Kong

52

Woodland Pre-Schools
Welcome to the Woodland Journey

54

Wycombe Abbey School Hong Kong
Building confidence for life

56

YLPSK & GAPSK
Building a solid foundation for learning Chinese Mandarin at home

59

Directory

An Evolving Curriculum: YCIS Empowers Students to Lead in Learning Communities

The new model of 'Learning Communities' is an integral part of Yew Chung International School's (YCIS) educational philosophy. It is a shift away from traditional pedagogies that promote hierarchical relationships between teachers and students. For Murray Forrest, Western Co-Principal of YCIS Primary, visualising the school as a community can empower and inspire students to move the curriculum in exciting and unexpected directions. "It's a fairly revolutionary step. You are essentially putting the curriculum in the hands of the students," he says.

Citing a current Year Five project on refugees and displacement, Forrest explains, "Many years ago, the same project was on the theme of exploration, mostly about the journeys made by Renaissance explorers from the West. Over time, students became more interested in the movement of peoples and teachers responded to their changing interests by moving the curriculum towards more current issues." Since then, the project is now informed by the United Nations' Sustainable Development Goals and prepares students to be more globally competent and compassionate actors in their community. The Year Fives have had the opportunity to learn about the situation of refugees locally and globally, contact charities and fundraise for them together in groups.

As the school curriculum encourages Project-Based Learning, students are guided by teachers to marshal knowledge from different fields to explore an overarching question for several weeks. STEM is not taught in discrete lessons but is incorporated into each and every lesson. "For their fundraising projects, the Year Fives had to conduct



▲ The Primary campus' Flexible Learning Spaces, which are open-plan and equipped with an eclectic range of movable furniture.

research on migration, design their own websites and create eye-grabbing posters to attract funding. Similarly, the Year Fours, who have been involved in a project themed around chocolates, had to design and engineer their own chocolate mould. The project ended with a physical product."

Under the new model of Learning Communities, the flexibility to move around the school is crucial. The Primary campus' newly renovated Flexible Learning Spaces are open-plan and equipped with an eclectic range of movable furniture to encourage students to move around and learn from their peers, teachers and even those who are in other classes. "In the model of Learning Communities, you have the opportunity to collaborate with who you know is going to help you best," Forrest explains, "Our model of Learning Communities emphasises enjoyment and curiosity. Children are willing to learn when the curriculum is student-driven. The teachers are there to support students on their individual learning paths according to their own pace."

Forrest believes that it is ultimately the pedagogy and philosophy that is liberating for students.



▲ Students are encouraged to take ownership of their own learning by approaching and collaborating with different students and teachers.

Yew Chung International School

Tel: 2338 7106

Email: admissions@ycef.com

Website: www.ycis-hk.com

Join YCIS Info Sessions



What is an Emergent Curriculum?

Written by Rachel Blois, Yew Chung International School (YCIS) Educator

“Emergent Curriculum begins with an openness to what children are doing, thinking, and saying.” (Stacey, 2009). At Yew Chung International School (YCIS), each child is treated as a unique individual, ‘with innate talents and gifts that should be nurtured to the fullest potential’. In Early Childhood Education, YCIS educators spend a long time discovering how to carefully curate a supportive, warm and holistic environment for each child.

Why is an Emergent Curriculum important?

In each YCIS classroom, there is a unique group of learners, each with their own interests, passions and curiosities. One child might be fascinated by insects, big and small. Another might want to sit and paint for some time each day. While another builds imaginatively with construction toys. An Emergent Curriculum allows children to choose their own activities and resources. This child-centred approach allows children to explore, develop and grow at their own pace.

At YCIS, teachers observe the child and notice what he or she is doing in the environment. This is a complex process as the teachers have to go beyond the obvious to observe the underlying meaning behind their play. Before responding, the teachers will reflect on what they have seen as a teaching team and engage in a reflective discussion on how they can extend the learning playing out within their own classrooms. Teachers will also talk to parents about their observations of what their child has been engaging with at home. At YCIS,



▲ Children explore various loose parts and classroom resources to extend and solidify their learning.



▲ The child-centred approach offers opportunities for children to explore, develop and grow at their own pace.

parent perspectives are always welcomed as it helps to give the teachers a deeper insight into the learning that is happening.

From there, the teachers respond in a way that provides opportunities to support and extend the learning. This could be a conversation with the children to find out more, adding new resources to scaffold the children’s development or creating a provocation to explore something new.

What do teachers do in class?

Each class has Co-Teachers who are able to support children by speaking English, Cantonese or Mandarin. The first priority in the class is to make every child feel safe and welcome. Relationships play a critical role within our teaching and learning (Lee, Carr & Green, 2001). YCIS teachers spend extended amounts of time observing children as they play, engaging in dialogue with them and supporting them as their relationships develop. As the teachers get to know the students and their families, they learn more about what interests the children and create learning experiences specifically for each child.

How do I know my child is learning?

A common question the teachers might be asked is “How will my child learn the alphabet if he’s only playing with trains?” YCIS teachers seek to observe a range of learning areas within children’s play, including social and emotional development, problem-solving, resilience and confidence. The development of these skills is essential in becoming a competent learner, and they start in the early years!



▲ Our Co-Teachers engage with children’s interests as a way to strengthen their relationships with them.

YCIS teachers will take observations, guided by the seven learning areas within the Early Years Foundation Stages (EYFS). This helps them ensure each child is developing holistically, and identify areas where a child might need extra support. The teachers are creative in how they observe as children have so many ways of exploring, creating and developing their knowledge. These observations may take place as they play with their friends, or in conversations with teachers. YCIS believes that each child learns at their own pace and the teachers work to provide holistic learning opportunities which cover all the learning areas within a child’s current interest and play.

YCIS teachers want to involve the parents, as much as possible in this process. As a parent, you are your child’s first teacher. You know your child the best, what makes your child excited, what frustrates your child and what their interests are at home. At YCIS, teachers will share the child’s progress as they make regular weekly contact with the parents as well as through Portfolios, Learning Journeys, Parent Teacher Conferences and Reports. YCIS values a strong Home-School Partnership and the relationships the teachers build with families.

References

Lee, W., Carr, M., & Green, P. (2001). *Documentation of Learning Stories : a Powerful Assessment Tool for Early Childhood*, 1–26.
Stacey, S. (2009). *Emergent Curriculum in Early Childhood Settings: From Theory to Practice*. Redleaf Press.



▲ An Emergent Curriculum allows children to choose their own activities and resources.

★ Parenting Tips

How can I support my child at home using an emergent approach to learning?

YCIS teachers’ advice is to start slow! There are so many ways to develop your child’s emergent play at home, so take some time to figure out what might work for your family. Rather than buying specific toy sets or models, you can buy or collect ‘open-ended’ materials. Open-ended toys and resources are objects which may have many uses and are not bound to one form of play.

For example, plastic food items, such as fruits and vegetables, have one function – to be pretend fruits and vegetables. However, a resource such as pom-poms could be used for role-play, dramatic play, sensory play or creative play. They stimulate your child’s imagination and creativity. There are lots of open-ended materials that you can find within your home as well as in nature.

Yew Chung International School

Tel: 2338 7106

Email: admissions@ycef.com

Website: www.ycis-hk.com



Join YCIS Info Sessions



Debentures 101

When looking for a school, parents will need to know the cost of school fees .. and debentures are not common in countries outside of Hong Kong.

What are they? How much are they? Are they necessary and are they legal?

Do we need a debenture ?

Most definitely not. As admissions experts, we believe that professional management of an application can usually substitute the need for an expensive debenture.

The reverse is also true - and very common. Debentures are a substitute for expert management of applications. Where parents are managing applications alone, it's very easy (although expensive!) to rely on a debenture to do the work for you.

We can advise on where a debenture may be useful and offer security, as well as associated costs. Fewer than 2% of our 150+ placements every year are done with a priority debenture.

We want all parents to think very carefully before spending hundreds of thousands of dollars.

So, to the technical part:

What is a debenture?

A debenture is the traditional name given to a loan agreement where the borrower is an institutional borrower. For our purposes, the institution is a school. The money raised by the debentures becomes a part of the school's capital structure, and the school may use the funds raised through debentures in any way it chooses.

Schools issue different types of debentures at different prices. Corporate debentures are the most expensive. Debentures of all types are issued in batches, in limited numbers.

For Hong Kong schools, debentures are sometimes called:

1. Capital Notes
2. Nomination Rights
3. Capital Contribution/Levy

...and others, but they are essentially still debentures.

While not all schools have debentures, some schools offer a variety of debentures.

How do schools use Debentures?

Most schools state that the fees are generally set at a level which covers most if not all of the school's running costs, but not its capital costs. So, debentures are how parents of students contribute to the long-term funding of the School.

While most schools (even some pre-schools!) in Hong Kong require that the parents of new students pay a debenture on admission, parents can sometimes buy a debenture before beginning the admissions process and earn some priority in the selection system.

What kind of debenture do I need?

Schools issue different types of debentures at different prices. Corporate debentures are the most expensive. Debentures of all types are issued in batches, in limited numbers. The most common types are:

1. Individual/Corporate
2. Refundable/non-refundable or depreciating

Individual/Corporate

Some schools have one type of debenture that may be used by families and corporations alike. Or, a company may opt to buy a personal debenture for the family (although that may come with complications). An individual debenture applies to one child in a family and cannot normally be transferred. A corporate debenture is held by a corporation and can be used for a child of an employee.

Refundable/Non-refundable/Depreciating

Some schools will refund the full amount of the debenture, without interest and less any transfer fees/penalties, to the parents once the child leaves the school.

In some schools, the debentures depreciate over a certain number of years; sometimes to zero. In a few schools, the debenture depreciates to zero in just seven years.



How much is a debenture?

They range from \$25,000 for ESF (known as a 'Non-refundable Capital Levy (NCL)') to \$10M for the top international schools for each child.

You may also be able to buy a debenture on the 'second-hand market'. This means that the school has 'sold out' and existing holders can transfer them to others. The price of this transfer may be set by market demands or the school may cap it. The school may also take a cut of the sale price.

Most schools do not have mandatory debentures and offer parents the option of paying an annual levy instead of a debenture. This is different from a debenture in that it is paid yearly and is not refundable. It may amount to the same or more than the debenture over the course of the child's schooling.

And finally...

It's certainly a confusing system and it can be difficult to talk about debentures in a general way as the schools really do vary in what they call them, how they charge for them and how they use them. Be sure to speak with someone in the finance or admissions office of the schools you are considering to ensure that you fully understand their system and how it operates

Recently, the schools have been criticised for charging fees which were previously unapproved and an Ombudsman investigation is ongoing. Our best advice is to seek advice. We are generally not in favour of debentures and use our expertise to save parents money where possible.



Take a look at our school budgeting guide

If you have questions about debentures or about school admissions in general, please book a complimentary call with one of our consultants.

www.topschools.asia
hello@topschools.com.hk
 Call us +852 3565 5866



An Education of Heart and Mind

*Malvern College Hong Kong (MCHK) is an IB World School offering the Primary Years Programme (PYP) and Middle Years Programme (MYP) for its culturally diverse pupil body. Its state-of-the-art campus is located in Pak Shek Kok, New Territories, adjacent to the Hong Kong Science Park. Following its successful launch in August 2018, the school will see its first cohort of Sixth Form students commence the two-year Diploma Programme in 2021/22.**

MCHK draws upon the rich heritage and ethos of Malvern College UK, a co-educational day and boarding school founded in 1865. Thanks to its academic rigour, scientific heritage and the pursuit of holistic education, Malvern College UK has acquired an enviable reputation for being one of the most highly regarded independent schools in the United Kingdom.



Five Centres of Excellence

Malvern's unique educational ethos is built around the "Five Centres of Excellence": British-style pastoral care, enhanced learning, entrepreneurial education, outdoor and environmental education, and a global network of Malvern schools around the world. Pupils are nurtured to become truly open-minded, global citizens who are respectful of other cultures and views whilst being capable of collaboration and building consensus.

Personalised Learning & Pastoral Care

Small class sizes give teachers the chance to engage with all pupils individually and differentiate according to ability, skill set and need within lessons. Dedicated tutor-time and a genuine concern for the individual are additional key features. The school's strong pastoral care builds upon an active house system where a sense of community is fostered through house events like sports or performing arts competitions as well as community dining.

Co-curricular Activities and Enrichment Programmes

Strongly committed to holistic education, Malvern offers an extensive co-curricular activities programme to pupils across all year groups. A wide variety of enrichment programmes like the Forest-Beach School Programme, Gifted & Talented Mentorship and Leadership Development Programme provide further opportunities for academic and personal growth.

**Malvern College Hong Kong is an authorised IB World School for the Primary Years Programme (PYP) and Middle Years Programme (MYP) and a candidate school for the Diploma Programme (DP).*

Malvern College Hong Kong

3 Fo Chun Road, Pak Shek Kok, New Territories

Tel: 3898 4688

Email: admissions@malverncollege.org.hk

Website: www.malverncollege.org.hk

Bringing out the best in every child

Founded in 2000, Hong Kong Academy has been empowering students to achieve their full potential with an individualized and holistic education approach for 20 years

At Hong Kong Academy (HKA), students from 3 years old to Grade 12 are encouraged to pursue their individual pathways through the wide range of learning experiences and co-curricular activities on offer. True to its mission, the school is a joyful, dynamic learning community that provides a rigorous international education characterized by mutual benefit and support.

“We recognize individual excellence and seek to bring out that unique strength in each child,” says Teresa Tung, the Secondary School Principal at HKA. “It’s all part and parcel of the whole child learning process.”

Comprehensive diploma pathways

At the core of the HKA education is a unique programme which culminates in students obtaining up to 3 different diploma credentials. All the graduates earn an HKA Diploma. This is an academic-focused, American-style high school diploma offering a breadth of subjects plus electives.

Students must also complete the Global Citizenship Diploma (GCD), a portfolio-based programme focused on global citizenship. Through the GCD, students are supported



to seek out authentic and relevant opportunities to make positive contributions to their communities and grow as individuals.

The third is the IB Diploma. HKA is one of the only 7 international schools in Hong Kong to offer the IB Primary Years Programme (PYP) – Middle Years Programme (MYP) – Diploma Programme (DP) pathway. The IBDP, designed to challenge students academically and prepare them for post-secondary studies, maintains a breadth of learning with an in-depth focus in each discipline.

“What students may want to pursue after graduation spans a range of interests, and getting these 3 diploma credentials opens doors for opportunities the world over,” says Tung. “It gives them a thoughtful self-knowledge that is integral to life-long learning.”



It helps that students have access to a purpose-built, award-winning campus with all-round physical and digital spaces designed to provide an enabling environment in which one can think, reflect and explore.

Within the design facilities, for instance, students can explore everything from textile to digital-based innovation. In the performance art space, there are amenities dedicated to theatre, drama, dance, and production. And in the outdoor space, students partake in an incredible range of sports and experiential learning.

Dedicated pastoral care

Wellbeing is an essential focus in the school’s programme and it provides daily opportunities for students to nurture a healthy and balanced lifestyle. “It’s paramount for students to have space and time to think about their own needs as adolescents and all that comes with growing into adulthood, as well as how they can appropriately react to their increased independence and maturity,” explains Tung.

The programme is taught by specialist wellbeing faculty, who deliver a programme which focuses on students learning skills such as managing interpersonal relationships, developing resilience, and communicating with peers and parents. Students begin each day in advisory, where they check in with their advisor in a small peer group of up to 10, proactively delving into developmentally appropriate issues.

“Our goal is for every student to leave HKA as a well-rounded and knowledgeable global citizen who knows who



they are, what they care about and where they are heading next,” Tung notes.

A learning community

A strong home-school partnership is key to educating the whole child, especially in current times, says Tung. “We work closely with parents to understand each child and develop the most suitable pathway for them that aligns with their current interest and future goals.” HKA offers interactive workshops for parents and students, hosts university information sessions and meets with families on a regular basis to ensure that every student is prepared to pursue their ambitions after graduating from the school.

“Our supportive faculty knows each child well and cares for them deeply,” Tung concludes. “As a community of learners, we will continue to innovate, adapt and evolve to provide the best educational experience for all our students.”



Teresa Tung, the Secondary School Principal at HKA

Hong Kong Academy

33 Wai Man Road, Sai Kung, New Territories, Hong Kong

Tel: 2655 1111

Website: hkacademy.edu.hk



Thinking beyond traditional education to transform learning

You want the best for your child. So do we. Nord Anglia International School Hong Kong (NAIS HK) educates your child for the future, enhancing learning through collaborations with the world's best organisations. Our individual approach to each child enables them to achieve outstanding academic results whilst developing the skills and mind-set to thrive in an ever-changing world.

NAIS HK offers an all-through education for students aged 3-18, with specialist teachers in Music, Art, Drama, PE and Mandarin from the very start of a child's educational journey with us. Our sole focus is on the success of each and every child. We want them to be the best they can be and we encourage them to "Be Ambitious", reflecting our school's philosophy. This means we support each student to progress further than they thought possible, achieving more academically, personally and socially – all of which are equally important.

At the heart of the school's success and excellent reputation, is the very high quality of teaching and learning

delivered by our exceptional staff. Our teachers create an atmosphere of curiosity, passion and enjoyment for learning in all students. We are proud to attract the best specialist teachers who are committed to nurturing and inspiring every child they care for. We support them to do this through world-class professional development, amplified by the sharing of international best practice. Nord Anglia Education (NAE) offers our staff the opportunity to study for a fully-funded Master's degree from King's College London, underscoring our commitment to the career progression of each teacher. Teachers here teach children, not classes, so the focus is always on the child as an individual. We bring a new



approach to the interdisciplinary subjects of STEAM (science, technology, engineering, arts, and mathematics), putting your child at the forefront of developing skills for the 21st century.

With over 40 nationalities represented in our own school, everyone learns to respect others regardless of differences in opinion, religion, race or ethnicity. All major festivals are celebrated and our annual International Day event is a culmination of the recognition that rich diversity is a strength. At NAIS Hong Kong, every day is an 'international day' as our pupils are part of the greater Nord Anglia Education family, with 73 schools in 30 countries, linked by our Global Campus. This allows students to co-operate with each other on projects and learning across the world, making them internationally-minded, effective global citizens of the future.

At NAIS Hong Kong, we offer the IGCSEs and IB Diploma Programme. This curricula provides the greatest success for the largest number of students. With our individualised

approach to each child's learning, outstanding teachers and collaborations, and unique opportunities inside and outside the classroom, we promise to nurture your child to love learning and help them to achieve more than they ever thought possible.

We would love to welcome your family to become a valued member of our vibrant and growing global community. Join Nord Anglia International School Hong Kong today and give your child the very best education.

Apply now!

Nord Anglia International School Hong Kong

Tel: 3958 1428

Email: admissions@nais.hk

Website: www.nais.hk



Academic scholarships: embracing multiculturalism and supporting children's wellbeing

MAGART International Kindergarten ensures children grow up to be truly global citizens equipped with bilingual excellence, life skills, etiquette, and manners whilst embracing multiculturalism and international mindedness.

International environment: over 20 different nationalities

Language development is an important indicator for mental and emotional wellbeing in young children, and as an international school in Hong Kong, MAGART takes the role of bilingual education very seriously.

Children learn language from the moment they are born, and between the ages of 2 - 4, children are learning how to use and explore language. Having staff who can plan and adapt to these adversities is a core part of the MAGART approach. MAGART is home to a diverse student and staff body (over 60% non-Chinese speaking students) and this diversity creates a wonderful microcosm of the makeup of Hong Kong. MAGART students are given multiple opportunities to communicate and bridge their knowledge of the world in the school.

"Language learning is an active, cognitive process, and should be taught holistically and through frequent interactions. Learning languages through rote memorisation has limits, but learning through exploration and experience is practically limitless." says Mr Liam Murphy, Director of Learning & Development for MAGART. This idea encapsulates the learning process at MAGART International Kindergarten; education that is authentic and constructed with the best possible practice in mind. In language development, as with all education, a consistent approach is key, with schools and families working together to ensure the best outcomes for students.

Community carer: academic scholarships initiation

Every family has been resilient during these tough times and has had to adapt to unimaginable feats in order to achieve some normality not only in their own lives, but in the lives of their children as well.



MAGART recognises the need to support the community and considers itself a Community Carer. Quality education is essential for development during the early years and MAGART International Kindergarten wants to support this within all communities. As such, MAGART will be offering a series of Academic Scholarships to help students return to school. The scholarships will support both half day and full day classes, with scholarships being offered up to 25% of the course fees.

MAGART Academic Scholarships (up to \$16,425) apply to the following:

- ▶ Transfer Students
- ▶ Joint Applicants (two or more families applying together)
- ▶ Full Day Programme Applicants

Mr. Liam Murphy, Director of Learning & Development looks forward to exploring MAGART's approaches to wellbeing in bilingual environments at The Standard International Schools Fair on 10th April.

MAGART International Kindergarten

Whampoa Campus

Shop G3A, Site 7, Whampoa Garden, 9 Tak On Street, Hong Kong

Tel: 2786 9314 / 2788 0788

Whatsapp: 9879 1509

Email: info.wp@magartedu.com

Taikoo Campus

Shop B, UG/F, Park Vale, No. 1060 King's Road, Hong Kong

Tel: 2786 9152 / 2786 9189

Whatsapp: 6717 3175

Email: info.tk@magartedu.com

Fanling Campus

G/F, Phase 1, Fanling Centre, New Territories, Hong Kong

Tel: 2677 8109

Whatsapp: 9445 8322

Email: info.fl@magartedu.com

Website: magartedu.com

PIONEERS OF THE
STORYTELLING IMAGE

venture
studios

CREATING MEMORIES



CALL NOW! 2885 6262

LONDON • HONG KONG • NEW YORK



Find us on:
facebook



Venture Studios Hong Kong



Venturephotography.com/hk



venturestudioshk



+852 5304 7363



**AMERICAN
SCHOOL
HONG KONG**

www.ashk.edu.hk



Providing A Holistic American Education

American School Hong Kong (ASHK) is a kindergarten (KG2) to Grade 12, non-profit, college preparatory program located in the Tai Po community. With a rigorous American and international program, the inquiry and concept-based approach to teaching and learning at ASHK promotes the development of 21st century skills for students. The US Common Core, Next Generation Science Standards (NGSS), and American Education Reaches Out (AERO) Social Studies Standards provide the framework for learning with English serving as the language of instruction and communication.

At ASHK, students experience a culture of creativity and innovation through the STEAM program. Students are guided through the Engineering Design Process (Ask, Imagine, Plan, Create, and Improve) to encourage innovation and creativity. Students learn how to ask critical questions, research the problem, develop possible solutions, build prototypes, test and evaluate their designs, and then redesign as need. The STEAM program equips students with the necessary skills to succeed in a global economy, such as critical thinking, problem solving and collaboration skills.

While intellectual development is of paramount importance, significant emphasis is placed on the social, physical, emotional, and creative domains to provide a holistic supportive experience for the development of the whole child. ASHK provides service opportunities and field trips for students to broaden their horizons, allowing them to become internationally-minded global citizens.

Fully Accredited by the Western Association of Schools and Colleges and the Middle States Association of Schools and Colleges, American School Hong Kong is owned and



operated by Esol Education, the world's largest operator of international American schools. Esol Education currently operates 10 high quality international schools across three continents with more than 10,000 students registered. Graduates from Esol schools are now attending leading universities worldwide, including Stanford University, Massachusetts Institute of Technology (MIT), Yale University, Columbia University, University of Toronto, and the London School of Economics.

A rolling admissions scheme is currently in place at ASHK, allowing for new student applications any time throughout the academic year. The ASHK scholarship program also provides students with an equal opportunity to enjoy this amazing educational experience, with financial assistance available.

American School Hong Kong

6 Ma Chung Road, Tai Po, N.T.

Tel: 3919 4111

Email: admissions@ashk.edu.hk

Website: www.ashk.edu.hk



NOW ACCEPTING APPLICATIONS FOR STUDENTS AGED 4 - 16

School Tours & Information Sessions Available



Bloom KKCA Academy: A Bilingual School of Innovation



Sweeping technological changes have reshaped our children's brains, future careers, the way they play, and the way they learn. It has made a lot of skills irrelevant and others essential. So what should innovative education look like?

Innovative schools that are excellent require a balance between structure and choice, between traditional and pioneering practices, decisions that take professional expertise, continuous negotiation, and genuine concern for students as individuals.

"It is with this understanding that our team takes on the challenge of building a one-of-a-kind learning community in Hong Kong that fulfills the promise of preparing students for purposeful work and meaningful lives," said Renée Boey, Founder and Head of School.

Future-Oriented Innovation Program

Bloom's curriculum has an eye toward the future. We teach innovation as a commitment to see possibilities through to realities, to imagine beyond the status quo, and to create fresh value. Our project-based learning modules examine human history through interdisciplinary lens, and each cumulates in students creating a product of positive change. The program develops enduring competencies and the disposition to embrace the open-ended nature of design problems. We take risks, learn from mistakes, and have the discipline to reflect and improve – together.

"Every student has a unique and interesting perspective on our world and can solve an impossible problem – if they ask meaningful questions and are supported by robust skills that set them up for a successful future," said Mei Chen, a former NASA engineer who is currently Bloom's STEM Director.

Bilingualism and Dual Language Pathways

Our dual language program thoughtfully balances positive education with the academic demands of becoming biliterate in Mandarin and English. The 50/50 split reinforces our respect for both languages and different cultures and gives our students ample opportunity to function comfortably, competently, and confidently in both languages.

Positive Education

Education should be inherently positive, yet unfortunately, schools often lose sight of the real reason they exist – the students. Through explicit and implicit focus on positive education we aim to build on and enhance each child's strengths and create a community of compassionate learners. Daily campfires as well as low student-teacher ratios allow us to focus on the whole child.

City as Campus: Weekly Field Trips

Our campus extends far beyond the classroom. Bloom students embark on weekly field trips, from visits to organic farms to science experiments at the Aberdeen Reservoirs. Students make sense of what they have learned in the classroom out in the real world and bring back questions, observations, and ideas that motivate them to pursue learning within the classroom. These regular interactions with the community also allow for positive values to be translated into caring actions.

We invite you and your children to join us and experience what educator Dave Perkins calls a "Future Wise" education.

Bloom KKCA Academy

7 Pui Tak Street, Shek Kip Mei
 Tel: 2110 4788
 Email: admissions@bnb.edu.hk
 Website: www.bloom.edu.hk



JOIN OUR NEXT
INFO SESSION



*Registration License Pending EDB Approval

Bloom is built with
an eye toward the future.

Founded by educators,
entrepreneurs, and engineers,
Bloom KKCA Academy provides
an innovative G1-6 bilingual,
project-based education.
From a NASA engineer to a
forest educator, our teachers
are what make Bloom special.



Bilingual/Multicultural
雙語/多元文化

Project-Based Learning
專題式創意學習



Future-Oriented STEM
啟迪未來的理工課程

Weekly Field Trips
每週實地考察



An IB World School preparing students for overseas education

Cultivating the next generations of innovators and changemakers, through a Christian-based education

Christian Alliance International School (CAIS) is an IB World School, offering the International Baccalaureate Diploma Programme (IBDP). It is also accredited to provide the Alberta Curriculum and offers Advanced Placement® courses.

Led by Richard Vanderpyl, CAIS sits just a stone's throw away from the business district in Lai Chi Kok. Vanderpyl is championing the vision of the school with a diverse faculty, empowering students to make a positive impact on society for the benefit of others through Christian education.

Quick Facts



Chinese Studies

CAIS offers an in-depth oral (Mandarin) and written Chinese programme (simplified and traditional scripts), providing support across all levels from native speakers to beginners



Through-train school

CAIS is a through-train school, providing Christian education, primary to secondary schooling



Nurturing a global perspective

We equip students to positively impacting the world through a series of local and international community engagement initiatives



Unique location

Centrally located in Hong Kong, only 15-17 minutes away from key residential areas

The IB advantages

The program encourages students to think critically and challenge assumption which is also what CAIS has been doing. The IB learner profile has been incorporated into the



CAIS DNA which assists every student to achieve beyond academic success.

CAIS strives to assist its students to be inquirers, to be knowledgeable, to be thinkers and communicators as they share the International Baccalaureate's overall aim to create a better and more peaceful world through the understanding and respect of different nationalities and cultures.

The Alberta advantages

The Alberta curriculum is globally recognized as one of the best learning systems in the world, with students consistently placing in the top tier of international rankings.

CAIS students not only attain outstanding results in the annual Provincial Achievement Tests, those graduated with the globally recognized Alberta Diploma have also continued to secure admission to leading universities and colleges around the globe.

While nurturing students' competencies, it accords top priority to training them to become critical thinkers, and equipping them with an entrepreneurial spirit to make the world a better place for all.

Campus expansion

With its new campus building set to open doors to serve more aspiring students, CAIS is determined to fit in and stand out in the international school scene in Hong Kong, as reflected in its mission statement "to cultivate learners with knowledge, skills, integrity and discernment, growing in love for God and service to humanity".

Christian Alliance International School

33 King Lam Street, Lai Chi Kok, Kowloon, Hong Kong

Tel: 3699 3862 / 3699 3863 / 3699 3866

Email: admissions@caisbv.edu.hk

Website: www.caisbv.edu.hk

[f](https://www.facebook.com/CAIS.HK) CAIS.HK [i](https://www.instagram.com/caisbv) caisbv



A SCHOOL THAT PREPARES YOUR CHILD FOR LIFE



CHRISTIAN ALLIANCE
INTERNATIONAL SCHOOL
宣道國際學校

ENQUIRE TODAY!

33 King Lam Street · Lai Chi Kok · Kowloon · Hong Kong

☎ (852) 3699 3862 · 3699 3863 · 3699 3866

✉ admissions@caisbv.edu.hk www.caisbv.edu.hk

Accreditations:



Advanced Placement® and AP® are registered trademarks of the College Board and the National Merit Scholarship Corporation, which were not involved in the production of, and does not endorse, this publication.



DOWNLOAD
OUR PROSPECTUS

Happiness Blooms at Fairchild

Each week passes quickly at Fairchild. Our experienced and nurturing Educators provide many engaging hands-on learning experiences that allow happiness to bloom. The Reggio Emilia approach is all about having children seen as competent, resourceful, curious, imaginative, inventive and to possess a desire to interact and communicate with others.

Our Reggio-inspired environment, often referred to as 'the third teacher', is thoughtfully designed and arranged in a way that engages and informs children beyond the direction a teacher provides. Our goal is to create an atmosphere that fosters creative exploration, demonstrates respect for children's work, while encouraging encounters, communication, and relationships.

Elegant simplicity and learning through the joy of discovery are at the heart of Fairchild. By enabling learning through play, the children discover nature through their senses. They have been eager to get hands on with our mealworms during our free play time.

The mealworms helped the children be aware of the word 'brave' as they choose whether to touch them, or have one crawling on their hands. They discovered courage doesn't always feel like courage. From the outside, courage can look impressive and powerful and self-assured. It might look reckless or thrilling. From the inside though, it can feel frightening or unpredictable. It can feel like

anxiety, or fear, or rolling self-doubt. Courage often looks different from the outside to the way you would expect it to feel on the inside. Courage and fear always exist together. If there is no fear, there is no need for courage.

Courage is something magical that happens inside us to make us push through fear, self-doubt, anxiety, and do the things that feel hard, risky or frightening. Sometimes, courage only has to happen for seconds at a time – just long enough to be brave. Courage comes in the way of grand gestures, super heroic feats, or actions of dragon slayers. The truth is, our children are slaying their own dragons, every day. Our children are heroes, every one of them. The key is helping them realise it so they can use it to push through when they feel scared or confused. Happiness is the key, and something we have in abundance at Fairchild.

Fairchild Kindergarten

G/F & 1/F Kong Chian Tower, Block 1,
351 Des Voeux Road West, Sai Ying Pun, Hong Kong
Tel: 2803 2638

Fairchild Junior Academy

22/F, Park Commercial Centre,
180 Tung Lo Wan Road, Tin Hau, Hong Kong
Tel: 2898 1611



FAIRCHILD
canadian academy



**OPEN FOR
ADMISSION
2021/22**

**International Class
Bilingual Class
(English & Mandarin)**

- PLAYGROUP
- PRE-NURSERY
- K1-K3

CREATIVITY

CURIOSITY

CONFIDENCE

At Fairchild, the process of inquiry-based learning through play, is inspired by the Reggio Emilia approach which recognises and values each child's potential. Fairchild brings 'the outdoors in' in an urban setting, providing great learning opportunities in natural environments that promote a child's innate instinct to play, inquire and learn. Contact us at info@fairchild.edu.hk (Sai Ying Pun) / info@fairchild.academy (Tin Hau) to book a school tour now.

Fairchild Junior Academy 📍 Tin Hau ☎ 2898 1611 🏠 www.fairchild.academy

Fairchild Kindergarten 📍 Sai Ying Pun ☎ 2803 2638 📷 [fairchild_hongkong](https://www.instagram.com/fairchild_hongkong)



The 10 Most Valuable
Pre-Schools
in Hong Kong 2019/20

Cultivate our Learners with the 3Rs - Relational, Rigorous and Relevant

Christian Alliance P.C. Lau Memorial International School (CAPCL), founded in 1992, was the first international school set up by the Kowloon Tong Church of the Chinese Christian and Missionary Alliance. Its campus in Kowloon City was closed down in 2017 for renovation, and it has been re-opened since August 2020. The enhanced campus focuses on early childhood and primary education. Over the years, CAPCL has nurtured numerous leaders for Hong Kong and the world, and the School will be celebrating its 30th anniversary in the academic year of 2021-2022.

The school's vision is to equip faithful and fruitful disciples who will grow in wisdom and stature, in favour with God and men, and thereby extending God's kingdom. Biblical principles and values are integrated into the daily experiences in the school. CAPCL students are intelligent, diligent learners with the enthusiasm to serve others. They are Christ ambassadors who set an example in speech, behaviour, love, faith, and purity.

Learning and teaching at CAPCL are relational, relevant and rigorous. Two teachers - one specializing in English and the other in Chinese - look after a small class size of around 22 students. Together they develop trusting and healthy relationships. In a warm and welcoming environment, children learn to cultivate their ideas, self-awareness, and respect for one another. The School offers the bilingual Canadian-Alberta Curriculum, which emphasizes equal proficiency in English and Chinese. The instruction medium



is approximately 65% English and 35% Chinese (Mandarin, traditional script). In addition to becoming bi-literate in English and Chinese, research shows that bilingual education benefits children in developing their divergent thinking skills, deepening their memory ability, and enhancing their attention span. CAPCL learners strive to be responsible global citizens with an understanding and appreciation of western and eastern cultures. As a community of learners, we discover, develop, and apply our learning to serve one another.

At CAPCL, students engage in their learning. They are encouraged to try their best, and they are supported to be successful. We believe that the combination of Christian Education, Character Development, Canadian Curriculum, and Bilingual Instruction Model form the four tenets of our school where our learners grow to be engaged thinkers and ethical citizens with entrepreneurial spirits.

Christian Alliance P.C. Lau Memorial International School

2 Fu Ning Street, Kowloon, Hong Kong

Tel: 2713 3733

Email: info@capcl.edu.hk

Website: www.capcl.edu.hk



Christian Alliance P.C. Lau Memorial
International School
宣道會劉平齋紀念國際學校

Founded in 1992



Welcoming Admissions

Learn and Grow in God's Love
Serve and Flourish in God's Grace
學習成長在神愛 服事綻放沐恩光



Rejuvenated school campus



Canadian curriculum – Alberta English-Chinese bilingual program
(65% English and 35% Chinese-Mandarin & traditional script)



Christian ethos – cultivate students' character development and servant leadership



Small learning community – develop an engaging learning journey

Enrollment for
Preparatory to Grade 4
2021-2022
academic year

Apply Now!

<https://www.capcl.edu.hk/admissions>



An education in the German International Stream at GSIS

GSIS prides itself on delivering a unique, academic and multicultural education whilst continually evolving to meet the needs of 21st century learners. An education at this top flight international school is especially international by nature and opens doors to the finest universities around the world.

An education in the German International Stream is not only an investment in your child's academic life and professional future, it is also an investment in his or her future success. From early childhood onwards, the education GSIS offers is broad-ranging and holistic, and creates a pathway leading to the top universities around the world. The German International Abitur (DIA) is an internationally-acclaimed and highly regarded diploma that provides an academically exceptional and culturally rich bilingual education to students of all nationalities. The robust curriculum of languages, sciences, maths and arts is studied and the DIA is awarded after completing three written and two oral examinations in both German and English, as well as accumulated grades from most subjects covered in the final two years showing a students' particular understanding of covered subject matter.



GSIS's bilingual approach is also reflected in its unique Fast Track Programme in K06 (Y07) at its Peak Campus which is an accelerated language programme with intensive language support for students new to the German language and has been designed for the needs of international students, regardless of the language spoken at home. Students will be part of the GSIS dual-stream community where academic excellence is valued highly, as is hard work and personal achievement. Ms Grit Cichon, Deputy Principal and Head of the German International Stream said "The most suitable students are those who are motivated to tackle the challenge of an intensive language-learning experience and are able to demonstrate above average academic achievement and ability". Ms Wiebke Langer, Head of the German Secondary Department said "The German International Stream is a small stream with a big heart. Being smaller means that our students can connect with each other and allows their teachers to use individual concepts and resources to suit each child's needs".

German Swiss International School

Main Campus

11 Guildford Road, The Peak

Tel: 2849 6216

Pok Fu Lam Campus (Kindergarten & Lower Primary)

162 Pok Fu Lam Road, Pok Fu Lam, Hong Kong

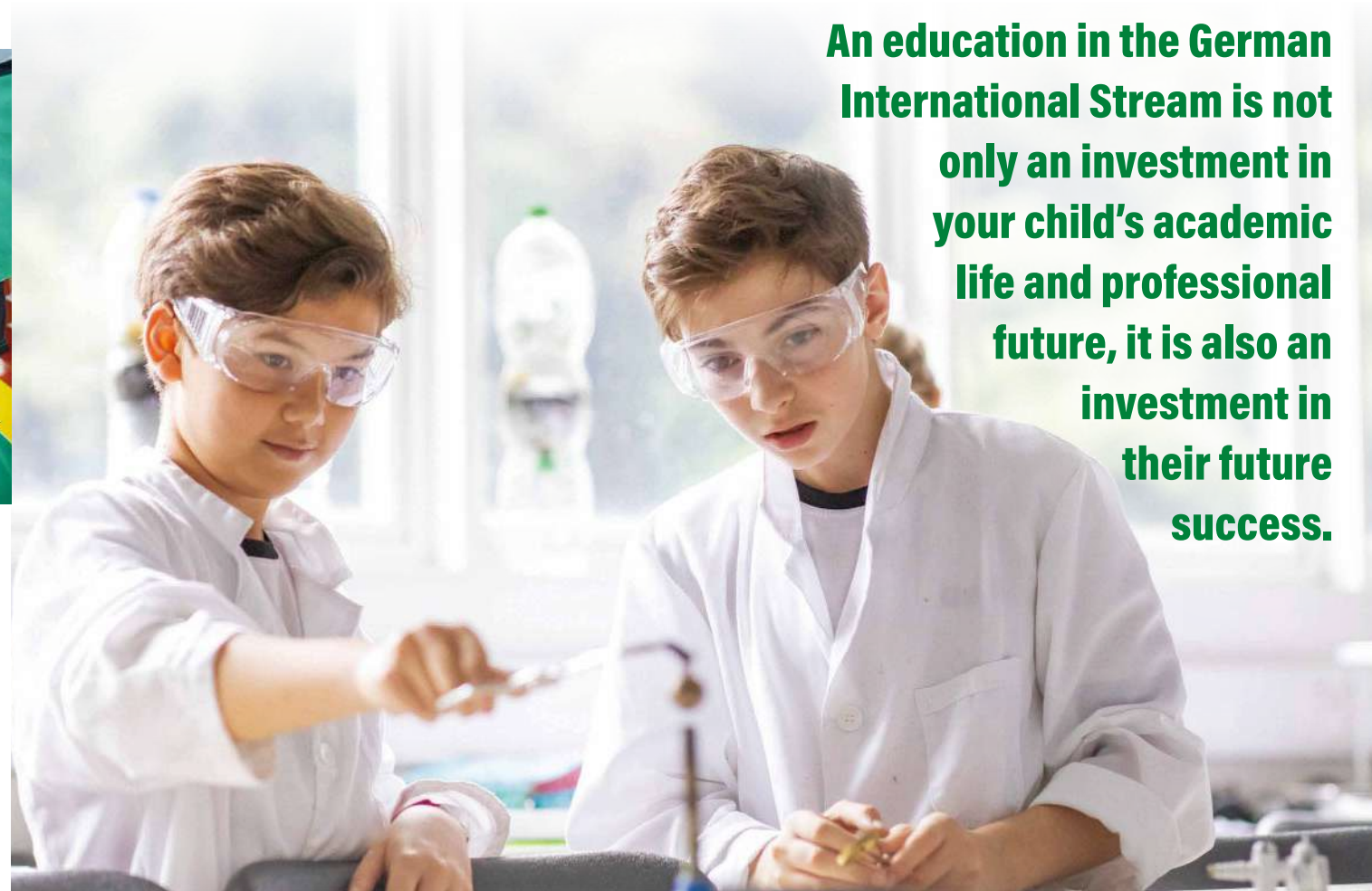
Tel: 2849 6217

Email: info@gsis.edu.hk

Website: www.gsis.edu.hk

CHALLENGE!

An education in the German International Stream is not only an investment in your child's academic life and professional future, it is also an investment in their future success.



GERMAN INTERNATIONAL STREAM

FAST TRACK PROGRAMME

An accelerated language programme with intensive support for students new to the German language



GERMAN SWISS INTERNATIONAL SCHOOL

CRITICAL THINKERS • REFLECTIVE •
GLOBAL CITIZENS • INNOVATIVE •
OPEN-MINDED

**11 GUILDFORD ROAD,
THE PEAK, HONG KONG**

☎ 2849-6216

☎ Admissions: 2180-0511



Your Child's Secondary Education Begins Here

Invictus Secondary School offers a through-school education from the Invictus kindergarten and primary schools in Hong Kong. Its curriculum is based on the well-established Cambridge Curriculum, providing both IGCSE and A-Levels. The newly renovated campus on the well-known Tai Tam Road in Chai Wan features well-equipped classrooms, two specialised science laboratories along with many other modern learning facilities. The school also uses local sports facilities and provides an ECA/CCA programme, all at an accessible rate.

Founded in Singapore

Invictus School in Hong Kong is part of the Invictus family of international schools, initially founded in Singapore in 2015, which has grown from 40 students and 15 staff to over 1,000 students and 300 staff across campuses in Singapore, Cambodia and Hong Kong. The Invictus mission is 'To provide accessible and quality education' and the opening of a secondary school campus in Chai Wan is another step in its vision to become a leading, educational institution in the Asia Pacific region.

Experienced Educators

Every Invictus school is headed by a seasoned principal with vast experience in international school education leadership. Our principals are supported by a team of board members, many of whom headed renowned schools and held various senior leadership roles in Singapore's Ministry of Education (MOE).



Comprehensive Academic Programme

Invictus believes in supporting every student's choice and this is offered through a comprehensive Cambridge IGCSE and A-level programme. With over 70 subject choices, the Cambridge IGCSE programme is one of the most well-known curricula around the world. The A-Levels provide students either with a general, wide-ranging education programme or a more focused programme in an area of their choice which helps to prepare students for the next step in their learning journey.

A Holistic Education

At Invictus, academic excellence, discipline and character development are the foundations on which the programme is developed. Its rigorous, in-depth curriculum is formulated to challenge each student, and experienced educators work to personalise the learning process for each child. This ensures that the learning is enjoyable and students go on to develop a joyous, lifelong love for learning.

Invictus School Hong Kong

Tseung Kwan O Campus (Primary school and Kindergarten)
G27 Monterey Place, 23 Tong Chun St, Tseung Kwan O
Tel: 3643 1868
Email: admissions@invictusschool.hk

Chai Wan Campus (Secondary school)
Level 4, 5, & 6, 188 Tai Tam Road,
Hing Man Shopping Complex, Chai Wan
Tel: 6483 3506
Email: admissions.secondary@invictusschool.hk
Website: www.invictus.edu.hk



INVICTUS
SCHOOL HONG KONG
茵維特(香港)學校



Cambridge Assessment International Education
Cambridge International School



Your Child's Education Journey Begins Here

Invictus School provides quality accessible education from Kindergarten through Year 13 (ages 3-18), utilising rigorous internationally-recognised curricula and providing immersive classroom experiences with skilled educators who help each child develop a spirit of innovation, lifelong learning and excellence.



Accessible Premium Education



Seamless Transfer To Overseas Invictus Schools

*Subject to government visa approval.



Convenient Location



No Debt or Levy



Conducive Learning Environment



Robust Curriculum

IEYC • IPC • Cambridge Lower Secondary • IGCSE • A-levels

TKO campus (Bilingual Education for Kindergarten & Primary)

G27 Monterey Place, 23 Tong Chun Street, Tseung Kwan O

✉ tko@invictus.edu.hk ☎ +852 36431868

Chai Wan campus (Secondary)

Level 4, 5, & 6, 188 Tai Tam Road, Hing Man Shopping Complex, Chai Wan

✉ chaiwan@invictus.edu.hk ☎ +852 64833506

Cultivating critical thinkers with the passion to learn

Scholarships and Financial Aid Available

The Independent Schools Foundation Academy (The ISF Academy) is a non-profit private independent primary and secondary school providing a unique inquiry-based Putonghua and English bilingual immersion education. We are a Chinese school with a global perspective.

We believe that learning is the active construction of knowledge best experienced through meaningful activities that foster exploration and creativity. An ISF education emphasizes probing discussions, passionate debates, and critical thinking. As cheerful high achievers, ISF learners exude a joy of learning that drives the development of culturally agile and confident communicators who possess the social, creative, and analytical thinking skills necessary to succeed and thrive in a complex world.

We are a strong proponent of learning by doing. Our hallmark Experiential Learning Program features unfamiliar settings and novel challenges that build character and confidence. An ISF learner is at home building dormitories in Laos, researching ancient texts in Cambridge, or exploring



the rich history of the Silk Road.

We are an accredited International Baccalaureate (IB) World school. Our Diploma results place us in the top tier of Hong Kong IB schools. Each year 100% of our IB Diploma students receive the IB Diploma and at least two thirds of them obtain the even higher accolade of the Bilingual IB Diploma. We are proud of our graduates who receive offers from the world's most prestigious universities.



Small Class Size

ISF Academy students benefit from small class sizes which range from 5 to 22 students per class. The overall student teacher ratio for all grades is 7:1.

Personalized University Counseling

Our systematic and personalized university guidance and careers program spans from Grade 9 to 12 and allows our students to make informed decisions for their DP subject choices and subsequent university applications.

Bilingual Diploma and Bilingual Theory of Knowledge

We offer both English and Chinese as first language options (Group 1). Students also receive Theory of Knowledge instruction in both English and Chinese, and may choose either language for their written paper.



忠 孝 仁 愛 禮 義 和 平 智

Independent

Chinese

Global

The Admissions Office

☎ 2202 2028
 ✉ admissions@isf.edu.hk
 🏠 1 Kong Sin Wan Road, Pokfulam, Hong Kong
 🌐 academy.isf.edu.hk



University offers received in the last three years include:

- Canada:** McGill University, The University of British Columbia, University of Toronto
- Hong Kong:** Hong Kong University of Science and Technology, The Chinese University of Hong Kong, The University of Hong Kong,
- U.K.:** Durham University, Imperial College London, London School of Economics and Political Science, University of Cambridge, University of Oxford, University of St Andrews
- U.S.A.:** Brown University, Cornell University, Dartmouth College, Harvard College, Princeton University, Stanford University, University of California, Berkeley, University of California, Los Angeles, University of Pennsylvania

Learning health and wellness from a young age

The holistic health and wellness initiative at Korean International School Hong Kong helps children develop skills that they can later leverage in their adult years.

The most crucial period in a child's educational life is the time spent in school building a solid foundation in lifelong health and wellness. Although this aspect of education is often overlooked in the Hong Kong system, Korean International School Hong Kong (KIS) is seeking to be at the forefront of a quiet revolution.

"We go beyond the physical notion of health to encompass what's appropriate for students to learn about holistic well-being," says Andrew Lin, Primary PE Coordinator at KIS. The approach leads the school to consider the whole person and how children interact with the environment.

A holistic approach

A through-train school offering two separate streams – the International Section and the Korean Section – KIS accommodates students from Reception to Year 13, and the emphasis on holistic wellness is demonstrated throughout the progression.



The school is teaching all students how to get the most of their PE lessons, by using creative, non-contact games like rock paper scissors, jumping jacks and equipment like hula hoops to enforce compliance with social-distancing rules.

Lin points to the special setups and procedures in the Physical Education (PE) lessons to ensure hygiene and the well-being of children and staff. "There is a limited amount of equipment accessible only by staff, and they are thoroughly sanitised before use. There's no physical contact and everyone has to keep their masks on during the classes."

In addition to training up the body, belly breathing is taught to prepare children as they return to their classrooms after the PE lessons, says Ni Si Nixon, a PE Teacher at KIS. The school addresses the need for upper secondary students to exercise by providing workout sessions that focuses on a wider concept of health, like guided meditation that directs the focus on different senses so that children become more aware of themselves and their surroundings.

"Learning how to manage oneself is especially important in the context of Hong Kong, taking into account the distress that arises in the community due to the social unrest – there is a new level of stress in addition to home life and studies," explains Lin. "What we're doing is teaching kids to be self-reliant in terms of health."

Stretching the definitions of PE, the school has promoted a number of initiatives within the school community, with themes ranging from yoga, mindfulness, dancing, cooking to nutrition. "They allow children to go out of the classroom and learn about the importance of being physically active.



The experience equips them with the skills and tools that are useful for life," says Nixon.

Promoting socio-emotional balance

Given the rise in stress amidst Covid-19, students' emotional health is another major concern in the school's wellness initiative. "We empower children to communicate their emotions to their peers, teachers and parents, so that they are aware of how they feel in different situations," says Anson Lam, Head of Counselling at KIS.

The school's counselling sessions, Lam says, apply positive psychology and encourage kids to help others in need. "We want KIS to be a happy and healthy school, and the counselling department, which is newly established, is committed to this goal."

The focus on wellness extends to everyone in the school community, including parents and staff. There are future plans

to invite external clinical psychologists to provide workshops for parents on topics such as parental burnout.

"With Covid-19, many parents are struggling to work, what with children staying at home most of the time, so we teach them to reclaim some 'me' time. With staff, we provide personal development, workshops and a variety of support," explains Lam.

Christopher Chadwick, the Principal of the International Section at KIS, says the school is strengthening its communications with parents amidst the pandemic via weekly updates and online events such as the "Parent's Information Evening". Parents are constantly updated on how the school is moving forward through the crisis and gain a better understanding of the school philosophy through these sessions.

Chadwick expresses the hope of establishing KIS as a school in Hong Kong that others look on as an example. "It's important to help everyone as much as possible in this testing time. For our children, we aim to be a lighthouse that leads their way out of the fog, so that they can embark on a bright and sunny future."



Korean International School – International Section

55 Lei King Road, Sai Wan Ho, Hong Kong

Tel: 2569 5500

Website: www.kis.edu.hk/is

The best of Canadian education for a global future

Maple Bear Canadian International Kindergarten brings the best of Canadian education to students around the world by offering high-quality early childhood education to prepare young learners to succeed in life.

With over 447 Maple Bear schools in 20 countries around the world, we operate in conformity by offering an international experience to every local school, while still providing educational experiences personalized to each community's unique needs. Maple Bear Hong Kong campus is located in Tseung Kwan O.

The Maple Bear Kindergarten Curriculum is designed by our own team of Canadian expert educators, the Maple Bear Faculty. Faculty members continually update the preschool material to reflect the latest in research and Canadian educational practices. Every year the Maple Bear Global Schools team of educators also go out in the field to Maple Bear locations around the world as trainers to help teachers deliver the program, and as Quality Assurance evaluators to ensure that schools are meeting standards.

Alongside the English immersion program developed by the Canadian faculty members, Maple Bear Kindergarten Hong Kong students' learning experiences are enriched by a locally developed Chinese curriculum. Students begin learning both English and Chinese using a student-focused immersion learning system based on Canadian educational pedagogy and best practices. Students study all academic subjects in both English and Chinese to ensure a bilingual immersive learning experience.

Maple Bear Kindergarten students don't just memorize vocabulary in the classroom. This is a key difference between the Kindergarten programs offered at Maple Bear and the ESL training offered at other Kindergartens claiming to offer a bilingual education.



Maple Bear Hong Kong provides Canadian education and bilingual curriculum from the age of 18 months to 6 years old; for toddlers between 12 to 24 months, we organise Bear Care infant care and English playgroup classes. These English enrichment classes are modelled upon current Canadian early childhood practices. The fun-filled program is designed to educate the child in a wholesome manner: physically, cognitively, intellectually, emotionally, and socially. Bear Care provides a secure and stimulating environment where risk-taking is encouraged, and where children perceive themselves as capable and competent learners.

Maple Bear Canadian International Kindergarten Hong Kong

Shop 7, G/F Alto Residences, 29 Tong Yin Street, Tseung Kwan O

Tel: 2813 4887

Email: admissions@maplebear.hk

Whatsapp: 6848 1264

MAPLE BEAR HONG KONG

Maple Bear Canadian International Kindergarten

The best of Canadian education for a global future.
REGISTRATION NOW OPEN

☎ 2813 4887 **📞 6848 1264**

Shop 7, G/F Alto Residences,
29 Tong Yin Street, Tsueng Kwan O

✉ admissions@maplebear.hk

🌐 maplebear.hk



Laying The Foundation For A Global British Education

Mount Kelly is an all-through international British school, providing a seamless education path in Hong Kong from early years to pre-university level through personalised learning in small class sizes. We also have a strong and flexible English as an Additional Language (EAL) programme, Chinese (Mandarin) and Maths curriculums, and a unique leadership programme.

Our students not only grow to meet the highest standards in education but also acquire our KELLY values: Kindness, Enthusiasm, Love of Learning, Leadership, and Celebrating You. This creates a strong learning environment that enhances academic achievement and develops students' social and relationship skills that last throughout their lives.

At Mount Kelly International Preschool and Nursery School there is not a choice between 'Play' and 'Academics'. Play is the foundation of intellectual development and the catalyst for solid academic achievement. When a child is engrossed in play, whether it is free play, guided play, adventure play or social play, they learn about themselves and the world around them. By engaging with their environment, their peers and their teachers, children will develop social and cognitive skills, become emotionally mature, and gain the self-confidence required to engage in new experiences.

During the primary years, students are encouraged to be inquisitive, question learning and grow a love for learning. Lessons are tailor-made, focusing on the needs of the students in an engaging environment.



DISCOVERING THE UNIQUE POTENTIAL IN EVERY CHILD



Our small class settings with a tailored British curriculum help our students reach their full potential inside and outside the classroom.



Students are placed in small class groups receiving a personalised learning where teachers ensure all students reach their true potential and encourage children to go beyond expectations.

Mount Kelly Secondary students prepare for their IGCSE examinations in Years 9 to 11. The Mount Kelly Hong Kong IGCSE programme teaches our students to be independent, passionate, responsible and confident in their preparation for their examinations as well as later on in life. Our IGCSE programme offers a wide variety of subjects and multiple pathways for our students, catering to different English language proficiency levels. The programme is taught in a small class setting and has a high level of personalisation, thereby ensuring all students receive the needed attention to thrive in their examinations.

Mount Kelly Hong Kong

152 Austin Road, Tsim Sha Tsui
Tel: 2157 9557
Website: www.mountkelly.edu.hk



Apply Now

Mount Kelly Hong Kong
(+852) 2157 9557
admissions@mountkelly.edu.hk
www.mountkelly.edu.hk

152 Austin Road, Tsim Sha Tsui,
Kowloon, Hong Kong



Since 1877
The Gateway to British Excellence



The future is super intelligent

Nowadays, we are surrounded by TV news, publications, and conversations that suggest that the world will be run by computers before we know it, and you can't help but wonder what that means for the future jobs and careers of students about to enroll in Year 1 - who will graduate from university in the 2030s and have a working life that will continue until the 2070s. Artificial intelligence is fast taking over from humans in its ability to retain knowledge and recall facts and answers to any questions asked within a matter of seconds.....just ask Siri.

Facts and knowledge often referred to as Academic Intelligence, plays a large part in the current school curriculum and education of students, and a crucial one at that. But now, in addition to academic intelligence, schools must develop and adapt their curriculum to ensure that students graduate with a wealth of different skills on top of their academics. The future is not just AI, but a combination of AI and HI... that being, a synergy of artificial intelligence and human intelligence which will lead to a future of super intelligence.

As educators, we must evolve and ensure that the skills taught today are the ones needed for tomorrow. In doing this, we need to add to our current knowledge-based curriculum, with an intelligence-based curriculum. There are key areas that humans will always remain superior in, such as emotional intelligence, critical thinking, creativity, strategy, and problem-solving, and these are the skills and qualities that will stand our students apart in an increasingly automated world.

For budding engineers, inventors, and entrepreneurs, for example, building problem-solving skills, critical thinking, and using their imagination is key to creating, developing, and exploring new opportunities and ways of doing things. Or let us take emotional intelligence: technology is a long way from recognising, never mind responding to human emotions appropriately, and as the saying goes 'people do business with people, so empathy, communication, instinct,

and that gut feeling is all going to play a crucial role in the jobs of the future, and something that school's need to help students embrace and develop.

Much of business and marketing is becoming automated, - you can set up a million emails to go out at once, or send a tweet a minute if you like at the touch of a button, but someone still needs to decide on whether these are the right actions and that's where strategy comes into play and understanding human reactions, combined with sound business acumen and decision making.

Recognising our own emotions, our capabilities, and our motivations also allows us to make informed decisions, not only informed by data, but by our social knowledge, our emotional knowledge, and by being creative and working in collaboration with others. All this together is what is important in the careers of the future. Students must build a broad range of skills on top of their academic success, and this is what will enable them to succeed in the future, as well as the ability to work with artificial intelligence, to take advantage of a world of automation and knowledge and bringing in skills that support and complement it.

At Oxbridge School, we want to prepare our students for their futures by taking a holistic approach to education and ensuring that they leave us not only with strong academics but with the ability to thrive and prosper in the new world of super intelligence.



Oxbridge School

G/F B & 1F, Star Ruby, 1 San Wai Street, Hung Hom, Kowloon
Tel: 2612 1888
Email: admissions@oxbridgeschool.hk
Website: www.oxbridgeschool.hk

Oxbridge School

+852 2612 1888



ADMISSIONS OPEN NOW!

Come & Visit Us

Why Oxbridge?

- Deliberately small classes (Max 15 students)
- No Capital Levy or Debenture
- 'Intelligently British' Curriculum
- Special Support for ESL
- Gifted & Special Needs provision

Applications are now accepted for our August 2021 entry. Visit us to find out more about our 'Intelligently British' education for students aged from 5 to 11 years old.

Please use your mobile phone to scan the QR code and select a time slot for your personal tour.



The best primary education in Hong Kong

Shrewsbury International School Hong Kong draws directly upon the heritage of one of Britain's most outstanding independent schools. Founded by Royal Charter in 1552, Shrewsbury School has an exceptional track record for broad study and academic excellence, and the two schools share aspiration, ideology and a commitment to the cultivation of confident, articulate and independent learners.

Offering an inspirational learning programme for young learners founded upon the English National Curriculum and designed to nurture creativity and confidence, Shrewsbury is just 30 minutes from Central.

"We are a Primary School and the vast majority of benefits our students enjoy stem from this critical distinction: they are the sole occupants of our beautiful campus and the most significant consideration of school leaders and governors." Mr Ben Keeling, Principal

Able to offer a unique range of experiences and opportunities to students and their families, children begin their journey at Shrewsbury in the Early Years at the age of 3. Learning in this phase nurtures creativity, inspires connection and broadens understanding - activities centre upon the development of core social, physical and intellectual skills. Catering for children from the age of 5, learning in the Primary phase grows in complexity as students develop their ability to independently access, interpret and then respond to a series of increasingly sophisticated engagements designed to challenge, engage and inspire.

All students benefit from access to an incredible range of learning spaces designed for young learners and a thematically arranged curriculum that encourages interconnectivity and both critical and creative thinking.

Learning at Shrewsbury is enhanced through the regular engagement of a specialist teaching team and a broad programme of Co-curricular activity. Chinese Language, Physical Education,



Music and Performing Arts lessons are all delivered by teachers offering subject specific expertise. Extra Curricular Activity, After School Aquatics and the Instrumental Music Programme act to complement, personalise and extend their programme of study. The Co-curricular programme has been designed to support the development of social and leadership skills, perseverance and determination. It also acts to support positive dialogue centred upon personal preferences, motivations and ambitions.

'Our commitment to curriculum enrichment is a commitment to the aspirations of every student. The experiences on offer at Shrewsbury provide each of our students with the attributes to thrive both within their primary years and beyond.' Mr Ben Keeling, Principal.

Shrewsbury International School Hong Kong

10 Shek Kok Road, Tseung Kwan O

Tel: 2480 1500

Fax: 2480 1231

Email: admissions@shrewsbury.edu.hk

Website: www.shrewsbury.edu.hk



**SHREWSBURY
INTERNATIONAL
SCHOOL**
HONG KONG

**PRIMARY EDUCATION
WITHOUT COMPROMISE**



Shrewsbury International School Hong Kong nurtures creativity, confidence and a life-long love of learning for children aged between 3 and 11. Offering a programme of study connected to the English National curriculum, we offer outstanding opportunities through primary education and beyond.

Digital Tour on 15 April at 10 am via Zoom

Twilight Tour on 29 April at 5:30 pm via Zoom



2480 1500



www.shrewsbury.edu.hk



admissions@shrewsbury.edu.hk



Exceptional People • Outstanding Opportunities • Academic Excellence



A Milestone Year Ahead for Stamford American School Hong Kong

2021 is a year full of excitement for Stamford as the school celebrates significant milestones, including new campus expansion and receipt of the internationally-recognized Council of International Schools (CIS) accreditation.

CIS Accreditation Achieved in 3.5 Years

Stamford is proud to announce that the school has recently been awarded full accreditation from the Council of International Schools (CIS), a rare achievement for a school only in operation for 3.5 years. CIS is a global school accreditor and membership community that provides one of the most acclaimed and rigorous evaluations and accreditation. The CIS accreditation is widely recognized by ministries and universities around the world as a demonstration of a school's commitment to high-quality international education.

A Bright Future Ahead with Campus Upgrade

The Stamford campus has increased by 50% in size with new facility additions tailor-made for its broad and balanced curriculum and empowering every child through a personalized learning approach to their unique greatness.

The newly-built diverse range of learning spaces include:

- ▶ A design and technology workshop
- ▶ Art studios
- ▶ Science laboratories
- ▶ Outdoor activity facilities
- ▶ An impressive library that spans an entire floor of the extension

Turning the Page with New School Logo

Nothing signifies the growth of an institute more than adopting a new logo and welcomes the next phase of development. The lion has been an iconic part of Stamford's



image and culture since the school first opened its doors in Hong Kong in 2017. The new school logo continues to celebrate the Stamford lion's proud heritage, paying tribute to the school's caring and strong community while offering a high-quality and personalized education modeled on the demands of an interconnected world.

Stamford American School Hong Kong

25 Man Fuk Road, Ho Man Tin, Hong Kong

Tel: 2500 8688

Email: admissions@sais.edu.hk

Website: www.sais.edu.hk



APPLY NOW FOR AUGUST 2021/22

Stamford's vision is to create an inspiring world of education, building self-belief and empowering individuals to succeed. Come and tour our current and new facilities expansion, and find out how our innovative approach to learning will inspire your child.

- Through-train education for students aged 5 to 18
- Inquiry-based approach combined with rigorous American standards
- World-class STEMinn program
- Development of the whole child through the growth of social, physical, and emotional skills
- 50+ Co-Curricular Activities



Library



New Innovation Center



Science Labs

Stamford American School Hong Kong

25 Man Fuk Road, Ho Man Tin, Kowloon, Hong Kong

+852 2500 8688

admissions@sais.edu.hk

www.sais.edu.hk

Come and see now!





Welcome to the Woodland Journey

Since 1978, Woodland Pre-Schools have prepared more than 60,000 children for successful primary school education by giving them the best start on their developmental journey. Following the English Early Years Foundation Stage with English, Bilingual and Mandarin options, our approach is to encourage children to learn through discovery, inspiring each child to fulfil their unique potential. With eight distinctive campuses, families have so many options to choose from – you and your little one can go along to see for yourselves!

Accompanied Programmes (6 months – 2 years 4 months)

Rollers | Wrigglers | Playgroup

Every experience leads our babies and toddlers to new discoveries about their immediate world and themselves. Our caring educators will guide you and your child to learn, discover and enhance their natural tendencies. Our programmes emphasis language and motor skill development to enhance muscle memory through play, repetition and fun, helping our little ones prepare for unaccompanied classes. To support our children’s language development, a Mandarin specialist leads a portion of the class, so our children become familiar to the language and sounds.



Join us on The Woodland Journey

1. Rollers
From 6 months to 12 months

2. Wrigglers
From 12 months to 18 months

3. Playgroup
From 18 months to 2 years 4 months

4. Stepping Stones
From 2 years to 3 years

5. Pre-Schools
From 2 years 8 months to 6 years

6. Prep for Primary
5 years +



Unaccompanied Programmes (2 years – 6 years)

Stepping Stones | Pre-School | Prep for Primary

Following the English Early Years Foundation Stage (EYFS) with English, Bilingual and Mandarin options, our approach is to encourage children to learn through discovery, inspiring each child to fulfil their unique potential. Through a play-based approach, children develop social relationships, build their independence, self-esteem and resilience. A strong emphasis is put on physical development and developing inquiry to prepare children for future academic learning.



Bilingual Education

Language learning supports children to become internationally minded and be fully active global citizens. As early as 6 months, our youngest children will enjoy a dedicated amount of immersive Mandarin in each class. As they progress, the duration of Mandarin exposure will extend to the whole class with a Mandarin teaching assistant or teacher. Our Mandarin sessions are aligned with the curriculum providing children a rich language learning experience and opportunities to practice the four major language skills – listening, speaking, reading and writing.

Woodland Pre-Schools

Mid-Levels | Aberdeen | Happy Valley | Kennedy Town | Pokfulam | Repulse Bay Beachside | Repulse Bay Montessori | Sai Kung

Tel: 2526 9478

Email: enquiry@woodlandschools.com

Website: www.woodlandschools.com

For over 40 years, Woodland Pre-Schools have been creating memories for children 6 months to 6 years old. By building the foundations of independent learning step by step, the Woodland Journey prepares children for a successful transition into primary school. With eight distinctive campuses, parents can pick a community best suited for their family. Woodland have rolling admissions throughout the year with no admission interview, making it easy to join us anytime!



Book a School Tour



Bilingual Option

6-6
Months Years

EYFS
Curriculum



Apply Now

www.woodlandschools.com | T. +852 2526 9478 | E. enquiry@woodlandschools.com

Mid-Levels | Aberdeen | Happy Valley | Kennedy Town
Pokfulam | Repulse Bay Beachside | Repulse Bay Montessori | Sai Kung

Building Confidence for Life

Based on the well-established heritage and academic excellence of Wycombe Abbey School in England, our curriculum is drawn from the British National Curriculum. We offer a rigorous Chinese language program, accompanied by strong Chinese cultural immersion. Our unique educational model combines the best of East & West.

Wycombe Abbey School Hong Kong offers a quintessentially British Prep School education for children 5 to 13 years old. The school provides a proven holistic education which is complemented by an exceptional Chinese language syllabus. This dynamic combination prepares our pupils to excel in the finest secondary schools around the world.

We emphasize our commitment to a broad education including 14 Primary Subjects and learning outside of conventional classroom settings - Drama, Music, Art, Science, Physical Education, iSTEAM and a wide range of carefully selected extracurricular enrichment activities to widen our pupils' curiosity and interests. Our school campus is equipped with state-of-the-art facilities, which includes 24 general purpose classrooms and dedicated classrooms for our specialty subjects. A four-storey indoor rock-climbing wall stands in the middle of our school atrium, and a 20,000 square foot outdoor rooftop garden with an artificial turf play area and an exercise track has been newly constructed.

Our teaching methods, experience and heritage enable us to offer an education for each individual pupil that balances academic rigour with an integrated focus on mental and physical well-being. Providing our pupils with an immersive



academic environment encouraging critical thinking through project-based applications, we work on the belief that well-balanced and confident pupils prove to enjoy successful careers in later life.

Several programmes are offered to support our pupils' transition to the top secondary schools around the world, including our Secondary & Boarding School Guidance Programme and Intensive English Programme.

Wycombe Abbey School Hong Kong is part of the Wycombe Abbey School International Network, which includes Wycombe Abbey School UK and Wycombe Abbey School Changzhou. Wycombe Abbey School Hangzhou and Nanjing will open in August 2021, and a secondary campus is currently under development for Hong Kong.

Wycombe Abbey School Hong Kong is currently open for Year 1 – Year 8 applications for August 2021 entry. Limited spaces available.

Wycombe Abbey School Hong Kong

17 Tin Wan Street, Aberdeen, Hong Kong

Tel: 2129 7100

Email: admissions@was.edu.hk

Website: www.was.edu.hk



WYCOMBE
ABBEY
SCHOOL
HONG KONG

The Premium British
Prep School in Hong Kong



Apply Now for Year 1 to Year 8*

*Year 7 & 8 to start in August 2021

A holistic approach based on the British National Curriculum, with a strong focus on Chinese language

Over 40 exciting extracurricular activities for our pupils to choose from

A proven track record in guiding children to the top boarding schools in the UK



www.was.edu.hk

(852) 6360 7378

admissions@was.edu.hk

(852) 2129 7100

Book Your
School Tour
Here



Building a solid foundation for learning Chinese Mandarin at home

Childhood is considered to be the golden age to second language learning, especially for kids age two to seven. However, children have been deprived of opportunities to learn at school under the outbreak of covid-19. With its emphasis on enhancing students' acquisition of Chinese Mandarin, GAPSK A.Inspire helps students to build a strong language learning foundation at home.

Since 2004, the Institute of Chinese Language Education of Peking University has developed GAPSK (General Aptitude Putonghua Shuiping Kaoshi) and YLPSK (Tests of Chinese for Young Learners) to provide comprehensive Chinese Mandarin proficiency assessment for different levels of students.

Integrating the professional knowledge in Chinese Mandarin with Artificial intelligence (AI), GAPSK A.Inspire has three different levels: beginner, intermediate, and advanced, catering for children between the ages of two to seven. In addition, GAPSK 5A upgraded teaching method allows students to learn Mandarin through an array of ways, including interactive AI APP, enlightenment and training tools and one-to-one tutoring.



▲ (Left) Principal Leung Siu-tong, Honorary Chairman of HK Aided Primary School Heads Association; (Middle) Professor Zhang Dan, researcher of The Women's Studies Center of Peking University



Parent testimonial

“I am very glad that my children can enter to La Salle Primary School and Po Leung Kuk Choi Kai Yau School. GAPSK A.Inspire strengthens their foundation for learning Chinese Mandarin which covered the inadequate teaching in kindergarten.”

– Cheung, full-time mother

“Students often face difficulties in learning Chinese Mandarin when transiting from kindergarten to primary school. As a result, they may have a sense of failure when falling behind with the study. Thanks to GAPSK A.Inspire, my daughter's language proficiency had improved a lot and successfully passed the admission interview of her dream school.”

– Suki Chui Suk-Man, Hong Kong actress and mother of three



YLPSK & GAPSK

Tel: (852) 3101 0800 / 3977 1577

Email: info@gapsk.org / info@ylpsk.org

Website: www.gapsk.org / www.ylpsk.org

GAPSK
AI 啟蒙學習系統

為2-7歲的孩子提供最高效方式學習中文和普通話，全面提升孩子在語言黃金期的學習效率，力求孩子在中文、語言、認知、思維上的進步，促進孩子的全人發展。



系統功能及特色



AI 互動視頻
AI Interactive Video



專業啟蒙導師
Certified Tutor 1 on 1
Teaching



私人課程顧問
Dedicated Course
Consultant



伸延學習練習冊
Extended Learning
Workbooks



主題融合工具
Thematic Learning Tools



互動繪本及圖卡
Interactive Picture
Books and Cards



AI 評估及學習規劃
Assessment and
Personalized Learning Path



音樂啟蒙
Music Enlightenment

GAPSK 教學發展委員會

✉ info@gapsktraining.org

🌐 www.GAPSK.com

☎ 3977 1550

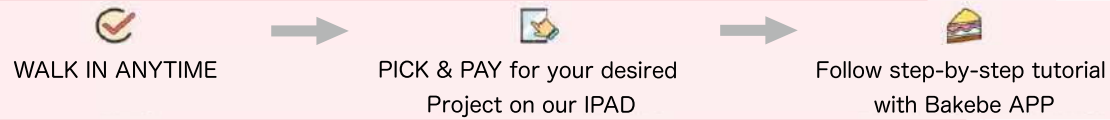
📞 6991 2202

預約評估
及體驗
Explore More

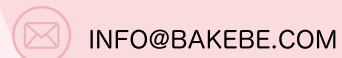
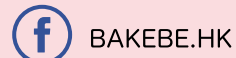




Bakebe is Hong Kong's First & Only Co-Baking Studio that teaches you to Bake with an App



Everyone can Bake like a pro



Address: 118-130 Nathan Road, Mira Place 2
 Shop 170, L1, Tsim Sha Tsui
 Tel : 3165 8279

Address: Shop No. 605, 6/F, Times Square,
 1 Matheson St, Causeway Bay
 Tel : 3793 4998

Directory

Discovery Bay International School

Discovery Bay, Lantau Island
Tel: 2914 2142 (Kindergarten) / 2987 7331 (Primary / Secondary)
Email: dbis@dbis.edu.hk
Website: www.dbis.edu.hk
Year founded: 1983
Curriculum: British National Curriculum and International Primary Curriculum

Discovery Mind Kindergarten/ International Play Centre

Discovery Bay Campus
 401, Marina Commercial Centre, G/F,
 2-8 Coastline Villa, Peninsula Village, Discovery Bay
Tel: 2987 8088
Email: dmk@discoverymind.edu.hk
Tung Chung Campus
 G/F, Seaview Crescent,
 No. 8 Waterfront Road, Tung Chung
Tel: 2987 8070
Email: dmtc@discoverymind.edu.hk

Discovery Mind Primary School

Discovery Bay Campus
 1/F, Shop 102, 92 Siena Avenue,
 North Plaza, Discovery Bay
Tel: 2914 2202
Email: admission_db@discoverymind.edu.hk
Tung Chung Campus
 G/F, Shop A-D Seaview Crescent,
 No. 8 Waterfront Road, Tung Chung
Tel: 2915 0666
Email: admission_tc@discoverymind.edu.hk
Website: www.discoverymind.edu.hk
Year founded: 2012
Curriculum: IPC

Discovery Montessori Academy

Block 1, 92 Siena Ave, Discovery Bay,
 Lantau Island, Hong Kong
Tel: 2812 9206
Email: primary@dms.edu.hk
Website: www.dms.edu.hk
Year founded: 2015
Curriculum: Montessori

Discovery Montessori School

Discovery Bay Campus
 Shop 101, 1/F, 92 Siena Avenue,
 Discovery Bay, Lantau Island, Hong Kong
Tel: 2987 1201
Email: enquiry@discoverymontessori.info
Central Campus
 3/F, Mandarin Building, 34-43 Bonham Strand,
 Central, Hong Kong
Tel: 2850 8006
Email: enquiry@dms.edu.hk
Website: www.dms.edu.hk
Year founded: 2010
Curriculum: Montessori

EIS International Preschool

No.1 San Wai Tsuen, San Tin, Yuen Long
Tel: 2889 7680 / 2889 7681
Fax: 2889 7331
Email: info@eminent-education.org
Website: www.emient-education.org
IG/Facebook: theeminenteducation
Year founded: 2020
Curriculum: EYFS, Nature-based Preschool

Elsa High School, Carmel School Association

460 Shau Kei Wan Road, Shau Kei Wan
Tel: 3665 5388
Email: elsahighschool@carmel.edu.hk
Website: www.carmel.edu.hk
Year founded: Carmel School Association was founded in 1991 and Elsa High School was established in 2009
Curriculum: International Baccalaureate

English Schools Foundation

25/F, 1063 King's Road, Quarry Bay, Hong Kong
Tel: 2574 2351
Email: info@esfcentre.edu.hk
Website: www.esf.edu.hk
Year founded: 1967

ESF Abacus International Kindergarten

1A Mang Kung Uk Road, Clearwater Bay
Tel: 2719 5712
Email: kinder@abacus.edu.hk
Website: www.abacus.edu.hk
Year founded: 2002
School Type: Private
Curriculum: IB Primary Years Programme

ESF Beacon Hill School

23 Ede Road, Kowloon Tong
Tel: 2336 5221
Email: bhs@bhs.edu.hk
Website: www.beaconhill.edu.hk
Year founded: 1967
School Type: ESF
Curriculum: IB Primary Years Programme

ESF Bradbury School

43C Stubbs Road, Happy Vally
Tel: 2574 8249
Email: enquiries@bradbury.edu.hk
Website: www.bradbury.edu.hk
Year founded: 1992
School Type: ESF
Curriculum: IB Primary Years Programme

ESF Clearwater Bay School

DD 229, Lot 235, Clearwater Bay Road, Clearwater Bay
Tel: 2358 3221
Email: info@cwbs.edu.hk
Website: www.cwbs.edu.hk
Year founded: 1980
School Type: ESF
Curriculum: IB Primary Years Programme

ESF Discovery College

38 Siena Avenue, Discovery Bay, Lantau Island
Tel: 3969 1000
Email: office@dc.edu.hk
Website: www.discovery.edu.hk
Year founded: 2007
School Type: Private
Curriculum: IB Primary Years Programme, IB Diploma

ESF Glenealy School

7 Hornsey Road, Mid Levels
Tel: 2522 1919
Email: enquiry@glenealy.edu.hk
Website: www.glenealy.edu.hk
Year founded: 1959
School Type: ESF
Curriculum: IB Primary Years Programme

ESF Hillside International Kindergarten

43B Stubbs Road, Mid-Levels East
Tel: 2540 0066
Email: kinder@hillside.edu.hk
Website: www.hillside.edu.hk
Year founded: 1999
School Type: Private
Curriculum: IB Primary Years Programme

ESF Island School

20 Borrett Road, Mid Levels
 (permanent campus currently under redevelopment)
Temporary campuses:
Island School Sha Tin Wai (Years 7, 8, 12, 13)
 Pok Hong Estate, Area 5A, Sha Tin, New Territories
Island School Tai Wai (Years 9, 10, 11)
 Estate Secondary School No. 2, Sun Chui Estate, Sha Tin
Tel: 2524 7135
Email: school@online.island.edu.hk
Website: www.island.edu.hk
Year founded: 1967
School Type: ESF
Curriculum: GCSE/IGCSEs, IB Diploma, Applied Learning Programme (BTEC qualifications)

ESF Jockey Club Sarah Roe School

2B Tin Kwong Road, Homantin
Tel: 2761 9893
Email: info@jcsrs.edu.hk
Website: www.jcsrs.edu.hk
Year founded: 1985
School Type: ESF
Curriculum: Primary Learning Programme, ASDAN Award Programme, Transition Challenge Programme, Towards Independence Challenge

ESF Kennedy School

19 Sha Wan Drive, Pokfulam
Tel: 2579 5600
Email: admissions@kennedy.edu.hk
Website: www.kennedy.edu.hk
Year founded: 1961
School Type: ESF
Curriculum: IB Primary Years

ESF King George V School

2 Tin Kwong Road, Homantin
Tel: 2711 3029
Email: office@kgv.edu.hk
Website: www.kgv.edu.hk
Year founded: 1902
School Type: ESF
Curriculum: GCSE/IGCSEs, IB Diploma, Applied Learning Programme (BTEC qualifications)

ESF Kowloon Junior School

20 Perth Street, Homantin, Kowloon, Hong Kong
Tel: 3765 8700
Email: office@kjs.edu.hk
Website: www.kjs.edu.hk
Year founded: 1902
School Type: ESF
Curriculum: IB Primary Years Programme

ESF Peak School

20 Plunketts Road, The Peak
Tel: 2849 7211
Email: office@peakschool.net
Website: www.ps.edu.hk
Year founded: 1911
School Type: ESF
Curriculum: IB Primary Years Programme

ESF Quarry Bay School

6 Hau Yuen Path, Braemar Hill, North Point
Tel: 2566 4242
Email: office@qbs.edu.hk
Website: www.qbs.edu.hk
Year founded: 1926
School Type: ESF
Curriculum: IB Primary Years Programme

ESF Sha Tin College

3 Lai Wo Lane, Fo Tan, Sha Tin
Tel: 2699 1811
Email: info@shatincollege.edu.hk
Website: www.shatincollege.edu.hk
Year founded: 1982
School Type: ESF
Curriculum: IGCSE, IB Diploma

ESF Sha Tin Junior School

3A Lai Wo Lane, Fo Tan, Sha Tin, New Territories
Tel: 2692 2721
Email: info@sjs.esf.edu.hk
Website: www.sjs.edu.hk
Year founded: 1988
School Type: ESF
Curriculum: IB Primary Years Programme

ESF South Island School

50 Nam Fung Road, Aberdeen, Hong Kong
Tel: 2555 9313
Email: sis@sis.edu.hk
Website: www.sis.edu.hk
Year founded: 1977
School Type: ESF
Curriculum: GCSE/IGCSEs, IB Diploma, IB Career-related Programme, Applied Learning Programme (BTEC qualifications)

ESF Tsing Yi International Kindergarten

Maritime Square, 33 Tsing King Road, Tsing Yi
Tel: 2436 3355
Email: admissions@tyk.edu.hk
Website: www.esf.edu.hk
Year founded: 1999
School Type: Private
Curriculum: IB Primary Years Programme

ESF Tung Chung International Kindergarten

1/F, Commercial Accommodation, The Visionary,
 1 Ying Hong Street, Tung Chung, Lantau, N.T.
Tel: 3742 3500
Email: kinder@tc.esf.org.hk
Website: www.tck.edu.hk
Year founded: 2016
School Type: Private
Curriculum: IB Primary Years Programme

ESF West Island School

250 Victoria Road, Pok Fu Lam, Hong Kong
Tel: 2819 1962
Email: wis@wis.edu.hk
Website: www.wis.edu.hk
Year founded: 1991
School Type: ESF
Curriculum: GCSE/IGCSEs, IB Diploma, Applied Learning Programme (BTEC qualifications)

ESF Wu Kai Sha International Kindergarten

Level 1, Lake Silver Tower, 599 Sai Sha Road, Ma On Shan
Tel: 2435 5291
Email: kinder@wksk.edu.hk
Website: www.wksk.edu.hk
Year founded: 2009
School Type: Private
Curriculum: IB Primary Years Programme

EtonHouse International Pre-School

LG/F Kindergarten, Mayfair By The Sea I,
 23 Fo Chun Road, Tai Po
Tel: 2780 5700
Email: enquiry@etonhouse.com.hk
Website: www.etonhouse.com.hk
Year founded: 1995
Curriculum: Inquiry based Reggio Emilia inspired curriculum

Fairchild Junior Academy

22/F, Park Commercial Centre,
 180 Tung Lo Wan Road, Tin Hau, Hong Kong
Tel: 2898 1611
Email: info@fairchild.academy
Website: www.fairchild.academy
Year founded: 2016
Curriculum: Canadian Early Learning Framework

**Fairchild Kindergarten**

G/F & 1/F, Kong Chian Tower, Block 1,
 351 Des Voeux Road West, Sai Ying Pun, Hong Kong
Tel: 2803 2638
Email: info@fairchild.edu.hk
Website: www.fairchild.edu.hk
Year founded: 2017
Curriculum: Canadian Early Learning Framework and Hong Kong Kindergarten Education Curriculum Guide

Forest House Waldorf School

Commercial Development Floral Villas,
 18 Tso Wo Road, Sai Kung
Tel: 2792 6055
Email: info@foresthouse.edu.hk
Website: www.waldorf.edu.hk
Year founded: 2014
Curriculum: Waldorf

French International School

Blue Pool Road Campus
 165 Blue Pool Road, Happy Valley
Chai Wan Campus
 1 Cheung Man Road, Chai Wan, Hong Kong
Jardine's Lookout Campus
 34 Price Road, Jardine's Lookout, Hong Kong
Tseung Kwan O Campus
 28 Tong Yin Street, Tseung Kwan O, N.T.
Tel: 2577 6217
Email: info@lfs.edu.hk
Website: www.fis.edu.hk
Year founded: 1963
Curriculum: English National Curriculum to IGCSE then IBDP; French National Curriculum

Gailee International School – Kindergarten & Nursery

1/F Peace Garden, 2 Peace Avenue, Ho Man Tin, Kowloon
Tel: 2390 3000
Email: gis@gis.edu.hk
Website: www.gis.edu.hk
Year founded: 2014
Curriculum: International Baccalaureate (Primary Years Programme)

Garden House Pre-school and Playgroup

G/F, Silverstrand Shopping Centre,
 7 Silverstrand Beach Road, Clearwater Bay
Tel: 2358 1177
Email: info@gardenhouse.edu.hk
Website: www.gardenhouse.edu.hk
Year founded: 2008
Curriculum: Waldorf

German Swiss International School

Main Campus (Primary & Secondary)
 11 Guildford Road, The Peak
Tel: 2849 6216
Pok Fu Lam Campus (Kindergarten & Lower Primary)
 162 Pok Fu Lam Road, Pok Fu Lam, Hong Kong
Tel: 2849 6217
Email: info@gsis.edu.hk
Website: www.gsis.edu.hk
Year founded: 1969
Curriculum: GSIS is a multi-language through-train school, from Kindergarten to Secondary, operating two parallel streams - the German International Stream and the English International Stream - following curricula that respectively lead to the German International Abitur Diploma and the International Baccalaureate (IB) Diploma following IGCSE examinations in Year 11



Gigamind English Primary School

Block A, 9 Tin Lung Road, Phase 6, Maywood Court, Kingswood Villas, Tin Shui Wai, N.T.
Tel: 2446 9883
Email: info@gigamind.edu.hk

Gigamind Kindergarten & Children's House

Block B, 9 Tin Lung Road, Phase 6, Maywood Court, Kingswood Villas, Tin Shui Wai, N.T.
Tel: 2446 9210
Email: kginfo@gigamind.edu.hk
Website: www.gigamind.edu.hk
Year founded: 2001
Curriculum: Own

Good Time Play School

Fanling Centre
 G/F Block A & B, Fanling Centre Phase 1, 33 San Wan Road, Fanling
Tel: 2677 8109
Website: www.goodtime.edu.hk
Sha Tin Plaza
 Level 4, Block C & D, Sha Tin Plaza, Sha Tin
Tel: 2601 3278
Website: www.goodtime.edu.hk
Year Founded: 1986

Grace Garden International Nursery and Kindergarten

Shop GA 12B – 14, G/F, Site A, 55 Tai Hong Street, Lei King Wan, Sai Wan Ho (MTR Station Exit A)
Tel: 2702 9778
Whatsapp: 6100 8339
Email: enquiry@gracegarden.edu.hk
Website: www.gracegarden.edu.hk
Year founded: 2015
Curriculum: Early Years Foundation Stage

Greenfield English (International) Kindergarten

The Long Beach
 Unit 1 Kindergarten Area UG/F, 8 Hoi Fai Road, The Long Beach, West Kowloon
Tel: 3514 8081
Website: www.greenfield.edu.hk
Year Founded: 2011
Tung Chung
 Podium, 1/F, Caribbean Bazaar, Caribbean Coast, 1 Kin Tung Road, Tung Chung, Lantau Island
Tel: 2162 5538
Website: www.greenfield.edu.hk
Lohas Park
 Kindergarten Site, Hemera, Lohas Park III, Tseung Kwan O
Tel: 2246 4801
Website: www.greenfield.edu.hk
Year Founded: 2016
Sheung Ning Road
 Shop A-B, G/F & 1/F, The Kindergarten Building, On Ning Garden, 10 Sheung Ning Road, Tseung Kwan O
Tel: 2701 2808
Website: www.greenfield.ed.hk
Mont Vert
 The Kindergarten, Mont Vert, 9 Fung Yuen Road, Tai Po
Tel: 3907 0178
Website: www.greenfield.edu.hk

Guidepost Montessori

Kennedy Town Campus
 1-2/F, 554 – 560 Queen's Road West, Sai Wan, Hong Kong
Tel: 3619 1136
Email: kennedytown@guidepostmontessori.com
Chai Wan Campus
 Harmony Garden, 9 Siu Wai Wan Road, Siu Wai Wan, Hong Kong
Tel: 2866 8260
Email: chaiwan@guidepostmontessori.com

Hamilton Hill International Kindergarten

UG/F, Ching Wah Mansion, No. 1-3 Ching Wah Street, North Point
Tel: 3461 9750
Email: admissions@hhik.edu.hk
Website: www.hhik.edu.hk
Year founded: 2015
Curriculum: International

Han Academy

G/F-2/F, 33-35 Wong Chuk Hang Road, Aberdeen
Tel: 3998 6300
Email: admission@hanacademy.edu.hk
Website: www.hanacademy.edu.hk
Year Founded: 2017
Curriculum: Cambridge (Primary, Secondary, IGCSE, A Level), IBDP (candidate school)

Harrow International School Hong Kong

38 Tsing Ying Road, Tuen Mun
Tel: 2824 9099
Email: admissions@harrowschool.hk
Website: www.harrowschool.hk
Year founded: 2012
Curriculum: International

Highgate House School

2/F, 100 Peak Road, The Peak
Tel: 2849 6336
Website: www.highgatehouse.edu.hk
Year founded: 1992
Curriculum: Waldorf

HKCA Po Leung Kuk School

62 Tin Hau Temple Road, Hong Kong
Tel: 3465 8400
Email: info@plkis.edu.hk
Website: www.plkis.edu.hk
Year Founded: 2017
Curriculum: IBPYP

Hong Kong Academy

33 Wai Man Road, Sai Kung
Tel: 2655 1111
Email: admissions@hkacademy.edu.hk
Website: www.hkacademy.edu.hk
Year founded: 2000
Curriculum: IBPYP, IBMYP, IBDP

**Hong Kong Adventist Academy**

1111 Clear Water Bay Road, Sai Kung
Tel: 2623 0034
Email: info@hkaa.edu.hk
Website: www.hkaa.edu.hk
Year founded: 2011
Curriculum: Local curriculum with electives from the American curriculum

Hong Kong Chinese Christian Churches Union Logos Academy

Campus I
 No. 5, Ling Kwong Street, Tseung Kwan O, N.T.
Tel: 2337 2126
Campus II
 No. 1, Kan Hok Lane, Tseung Kwan O, N.T.
Tel: 2337 2123
Email: info@logosacademy.edu.hk
Website: www.logosacademy.edu.hk
Year founded: 2011
Curriculum: HKDSE, IBDP

Hong Kong International Learning Academy

Unit 7 & 8G Office Block One, North Plaza, 92 Siena Avenue, Discovery Bay
Tel: 2416 3198
Email: hkilacademy@gmail.com
Website: https://www.studyhkila.com

Hong Kong International School

Tai Tam Campus
 1 Red Hill Road, Tai Tam
Tel: 3149 7000
Repulse Bay Campus
 23 South Bay Close, Hong Kong
Tel: 2812 5000
Email: admissions@hkis.edu.hk
Website: www.hkis.edu.hk
Year founded: 1966
Curriculum: American with Advanced Placement courses offered in High School

Hong Kong Man Sang Kindergarten Western District

Shop A, G/F & 1/F, Nice Garden, 513-519 Queen's Road West
Tel: 2336 3232
Website: www.mansangkg.edu.hk
Year Founded: 2016
North Point
 2/F Foo Yet Kai Building, 52-60 Java Road, North Point
Tel: 2578 6763
Website: www.mansangkg.edu.hk
Year Founded: 1969
Email: admission@mansangkg.edu.hk

Hong Kong Nobel Preschool

G/F-2/F, 65 Waterloo Road, Kowloon
Tel: 2338 7899
Website: www.nobelpreschool.org
Year Founded: 2015

International Christian School

Shek Mun Campus
 1 On Muk Lane, Shek Mun
Tel: 3920 0000
Ma On Shan Campus (International Kindergarten)
 G/F, Kam Ho House (Block H), Kam Fung Court, Ma On Shan, Shatin, N.T.
Email: ics@ics.edu.hk
Website: www.ics.edu.hk
Year founded: 1991
Curriculum: American, AP

International College Hong Kong (Secondary)

60 Sha Tau Kok Road, Shek Chung Au, Sha Tau Kok
Tel: 2655 9018
Email: info@ichk.edu.hk
Website: www.ichk.edu.hk
Year founded: 1984
Curriculum: IBPYP, English, IGCSE, IBDP

International College Hong Kong Hong Lok Yuen (Kindergarten & Primary)

3, Twentieth Street, Hong Lok Yuen, Tai Po
Tel: 3955 3000
Email: info@ichkhly.edu.hk
Website: www.ichk.edu.hk
Year founded: 1984
Curriculum: IBPYP, English, IGCSE, IBDP

Invictus School Hong Kong

Tseung Kwan O Campus (Primary school and Kindergarten)
 G27 Monterey Place, 23 Tong Chun St, Tseung Kwan O
Tel: 3643 1868
Email: admissions@invictusschool.hk
Chai Wan Campus (Secondary school)
 Level 4, 5, & 6, 188 Tai Tam Road, Hing Man Shopping Complex, Chai Wan
Tel: 6483 3506
Email: admissions.secondary@invictusschool.hk
Website: www.invictus.edu.hk

**Island Children's Montessori Kindergarten Tin Hau Campus**

Units B & C, LG/F & UG/F, 16 Tin Hau Temple Road, Tin Hau
Lei King Wan Campus
 Shop GC 19-21 Site C, Tai Hong Street, Lei King Wan
Tel: 3421 9100
Email: admissions@icms.edu.hk

Island Christian Academy

70 Bridges Street, Sheung Wan
Tel: 2537 2552
Email: office@islandca.edu.hk
Website: www.islandca.edu.hk
Year founded: 2012
Curriculum: IPC

Island Montessori International Kindergarten

North Point Campus
 Commercial Unit, G/F, Bedford Gardens, 151-173 Tin Hau Temple Road, North Point, HK
Tel: 3427 9100
Email: info@icms.edu.hk
Website: www.icms.edu.hk
Year founded: 2010
Curriculum: Montessori
Lei King Wan Campus
 Shop GC 19-21, G/F, Lei King Wan, Site C, 35 Tai Hong Street, Sai Wan Ho
Tel: 2562 8500
Website: http://icms.edu.hk
Year Founded: 2012

Island Waldorf School of Hong Kong

G/F 71-77 Smithfield, Kennedy Town, Hong Kong
Tel: 5114 1451
Email: info@iwshk.org
Website: www.iwshk.org
Year Founded: 2017
Curriculum: Waldorf

Italian International Kindergarten

Podium Level 1, Block 4, Phase 1, South Horizons, Ap Lei Chau, Hong Kong
Tel: 2662 3066
Email: info@iikg.edu.hk
Website: www.iikg.edu.hk
Year Founded: 2019

Japanese International School (International Section)

4663 Tai Po Road, Tai Po
Tel: 2634 3531
Email: esinfo@jis.edu.hk
Website: es.jis.edu.hk
Year founded: 1997
Curriculum: IB Primary Years Programme

Kellett School Kowloon Bay Preparatory and Senior Campus

7 Lam Hing Street, Kowloon Bay
Po Fu Lam Preparatory Campus
 2 Wah Lok Path, Wah Fu, Pok Fu Lam, Hong Kong
Tel: 3120 0700
Email: admissions@kellettschool.com
Website: www.kellettschool.com
Year founded: 1976
Curriculum: English National Curriculum including IGCSE and A-level

Kendall International Preschool

G/F, Residence 228, 228 Fuk Wing Street, Cheung Sha Wan, West Kowloon, Hong Kong
Tel: 2328 8223
Email: info@kendallpreschool.edu.hk
Website: www.kendall.edu.hk/
Year Founded: 2017
Curriculum: Own

Kiangsu & Chekiang Primary School & Kiangsu-Chekiang College (International Section)

Lower School
 30 Ching Wah Street, North Point, Hong Kong
Tel: 2570 4594
Upper School
 20 Braemar Hill Road, North Point
Tel: 2570 1281
Email: inter@kcis.edu.hk (Primary)
Email: inter2@kcis.edu.hk (Secondary)
Website: www.kcis.edu.hk
Year founded: 1993
Curriculum: Early Years Foundation Stage (EYFS); British National Curriculum; IB Diploma

Kingston International Kindergarten and Children Centre

G/F & 1/F, 12-14 Cumberland Road, Kowloon Tong
Tel: 2337 9049
Email: enquiry@kingston.edu.hk
Website: www.kingston.edu.hk
Curriculum: IB Primary Years Programme

Kingston International School

Lower Primary Campus
 113 Waterloo Road, Kowloon Tong, Kowloon
Tel: 2337 9031
Upper Primary Campus
 105 Waterloo Road, Kowloon Tong, Kowloon
Tel: 2337 9012
Email: enquiry@kingston.edu.hk
Website: www.kingston.edu.hk
Curriculum: IB Primary Years Programme

Kohitsuji Kindergarten

Shop 1, G/F, Site 10, Whampoa Garden, Hung Hom
Tel: 2330 6677
Website: www.kohitsujiyouchien.com
Year Founded: 2013

Kornhill International Nursery (Kornhill Anglo Chinese Kindergarten)

G/F 16 Hong Shing Street, Kornhill, Quarry Bay, HK
Tel: 2884 4186
Email: admin@kornhill-edu.com
Website: www.kornhill-edu.com
Year Founded: 1986
Curriculum: Teaching Strategies. The Creative Curriculum for Preschool

Korean International School

55 Lei King Road, Sai Wan Ho, Hong Kong
Tel: 2569 5500
Email: admissions@kis.edu.hk
Website: www.kis.edu.hk
Curriculum: IPC, UK, IGCSE, A-Levels, Korean



Kowloon Baptist Church Kindergarten

2/F, 300 Junction Road, Kowloon Tong, Kowloon
Tel: 2336 6213
Email: kbck@netvigator.com
Website: www.kbck.edu.hk
Year founded: 1975
Curriculum: Own

Kowloon Cannan Anglo-Chinese Kindergarten

G/F, 28B Grampian Road, Kowloon Tong
Tel: 2336 2096
Website: www.cannan.edu.hk
Year Founded: 1983

Lantau International School

Cheung Sha Campus
No. 22, Upper Cheung Sha Village, Lantau Island, Hong Kong
Tel: 2984 0302
Tong Fuk Campus
House 113, Tong Fuk Village, Lantau, Hong Kong
Tel: 2980 3676
Pui O Campus
No. 17-19, Lo Wai Tsuen, Pui O, Lantau Island, Hong Kong
Tel: 2984 0302
Email: lisadmin@lis.edu.hk
Website: www.lis.edu.hk
Year founded: 1995
Curriculum: British Curriculum

La Petite Enfance Kindergarten

Units 5, 6 & 8, LG/F, Office Block One, 92 Siena Avenue, Discovery Bay, Lantau Island
Tel: 8191 0813
Website: www.ecole-discovery.com

Leapfrog Kindergarten and Playgroup

11 Pak Tam Chung Village, Sai Kung Country Park, Sai Kung
Tel: 2791 1540
Email: admim@leapfrogkindergarten.org
Website: www.leapfrogkindergarten.org
Year founded: 1992
Curriculum: EYFS

Learning Habitat Kindergarten

Hampton Loft Campus
Shop 2, 5/F Hampton Loft, 11 Hoi Fan Road, Tai Kok Tsui
Tel: 2501 5105
Website: www.learninghabitat.org
Year Founded: 2005
Papillons LP Campus
Shop 12, 15 & 16, G/F Papillons Square, 21 Tong Chun Street, Tseung Kwan O
Tel: 2363 3005
Website: www.learninghabitat.org
Year Founded: 2010

Les Petits Lascars – Maternelle Française Hong Kong Kids Academy Int'l Preschool

Central Campus
2 & 3/F, Wellington Plaza, 56-58 Wellington Street, Central
Tseung Kwan O Campus
G01, Capri Place, 33 Tong Yin Street, Tseung Kwan O
Wong Chuk Hang Campus
Units 306-307, 3/F, One Island South, 2 Hung Yip Road, Wong Chuk Hang
Tel: 2526 8666
Email: admissions@petitslascars.com
Website: hk.kidsacademy.edu.hk/les-petits-lascars
Year founded: 2006
Curriculum: French

Li Po Chun United World College

10 Lok Wo Sha Lane, Sai Sha Road, Shatin
Tel: 2640 0441
Email: office@lpcuwc.edu.hk
Website: www.lpcuwc.edu.hk
Year founded: 1992
Curriculum: IBDP

Little Dalton Kindergarten

Hong Kong Island Campus
KG01, Wah Sin House, Wah Kwai Estate, Pok Fu Lam
Tel: 2792 2566
Email: info@littledalton.com
West Kowloon Campus
G/F, Imperial Cullinan, 10 Hoi Fai Road, Kowloon
Tel: 3612 5760
Email: info@littledalton.com
Website: www.littledalton.com
Year founded: 2013
Curriculum: Own

Little Lantau Montessori Kindergarten

Unit 12 & 13, G/F, Silverview Centre, 8 Ngan Kwong Wan Road, Mui Wo, Lantau Island
Tel: 3689 7033

Lou Pichoun French International Preschool Hong Kong

Tseung Kwan O Campus
1A-2A, G/F, Alto Residences, 29 Tong Yin Street, Tseung Kwan O
Tel: 2813 4277 / 6304 1021
Website: www.loupichoun.com
Lou Pichoun Stanley Campus
1/F, 5 Stanley New Street, Stanley, Hong Kong
Tel: 2813 2456
Happy Valley Campus
G/F Door C, 22 Fung Fai Terrace, Hong Kong
Tel: 2813 2456
Email: info@loupichoun.com
Website: www.loupichoun.com
Year founded: 1997
Curriculum: French, Own

Ludus Kindergarten

2/F, Le Billionnaire, 46 Sa Po Road, Kowloon City
Tel: 2382 0061
Website: www.ludus.edu.hk
Year Founded: 2015

MAGART International Kindergarten

Whampoa Campus
Shop G3A, Site 7, Whampoa Garden, 9 Tak On Street, Hong Kong
Tel: 2786 9314 / 2788 0788
WhatsApp: 9879 1509
Email: info.wp@magartedu.com
Tai Koo Campus
Shop B, UG/F, Park Vale, No. 1060 King's Road, Hong Kong
Tel: 2786 9152 / 2786 9189
WhatsApp: 6717 3175
Email: info.tk@magartedu.com
Fanling Campus
G/F, Phase 1, Fanling Centre, New Territories, Hong Kong
Tel: 2677 8109
WhatsApp: 9445 8322
Email: info.fl@magartedu.com
Year Founded: 2018
Curriculum: Enhanced EYFS, Reggio Emilia and inquiry approach



Malvern College Hong Kong

3 Fo Chun Road, Pak Shek Kok, New Territories
Tel: 3898 4688
Email: admissions@malverncollege.org.hk
Website: www.malverncollege.org.hk
Year founded: 2018
Curriculum: IB



Malvern College Pre-School Hong Kong Island West

G/F & 1/F Viking Court, 165-166 Connaught Road West, Sai Ying Pun, Hong Kong
Tel: 3898 4670
E-mail: iw-office@malvernpreschool.hk
Coronation Circle
Units 9-12, Coronation Circle, 1 Yau Cheung Road, Southwest Kowloon
Tel: 3898 4660
E-mail: office@malvernpreschool.hk
Website: www.malvernpreschool.hk

Maple Bear Canadian International Kindergarten Hong Kong

Shop 7, G/F, Alto Residences, 29 Tong Yin Street, Tseung Kwan O
Tel: 2813 4887 / 6848 1264
Email: admissions@maplebear.hk
Website: www.maplebear.hk



MASS International Preschool

Shop 2, G/F & LG/F, Lai Tak Plaza, Tai Hang Road, Causeway Bay
Tel: 3955 1588
Email: info@masspreschool.edu.hk
Website: www.masspreschool.com
Year founded: 2012
Curriculum: Other

Mighty Oaks Nursery & Kindergarten

1/F, Lungga Mansion, 46A Belcher's Street, Kennedy Town, Hong Kong
Tel: 2806 8383
Email: info@mightyoaks.edu.hk
Website: www.mightyoaks.edu.hk
Year founded: 2015
Curriculum: Early Years Foundation Stage

Ming Wai International Kindergarten

Flat A & B, G/F & 1/F, Alice Court, 10-12 Tsat Tsz Mui Road, North Point
Tel: 2561 5008
Website: www.mingwai.edu.hk
Year Founded: 1982
North Point Branch
Shop 1 G/F & 1/F, Fairview Court, 5-13 Tsat Tsz Mui Road, North Point
Prince Edward Branch
Shop 6 of G/F & Flat 1-5 of 1/F, Kenwood Mansion, 15 Playing Field Road, Prince Edward
Tel: 2522 2688

Mills International Preschool

The Spectacle, 8 Cho Yuen Street, Yau Tong, Kowloon, Hong Kong
Tel: 2717 6336
Email: preschool@millsinternational.edu.hk
Website: www.millsinternational.edu.hk
Year founded: 2013
Curriculum: Early Years Foundation Stage

Mink International Pre-School

Level 1, Sun Hing Garden, Tai Po, New Territories
Tel: 2665 4333
Website: www.mink.edu.hk
Year Founded: 1986

Montessori for Children

House A, Phoenix Garden, RBL 1033 Tai Tam Village, Stanley, Hong Kong
Tel: 2813 9589
Email: hongkong@montessori.edu.sg
Website: www.montessori.edu.sg
Year founded: 1986
Curriculum: Montessori

Mori Lisa International Kindergarten

Level 5 Flat Roof, Block 7, Greenwood Terrace, Chai Wan
Tel: 3176 1236
Email: info@morilisa.hk
Website: www.morilisa.hk
Year founded: 2014
Curriculum: Early Years Foundation Stage

Morningstar Preschool and Kindergarten

Block 2, G/F, Chi Fu Fa Yuen, Pok Fu Lam
Tel: 6993 7157
Email: hello@morningstarschools.com
Website: www.morningstarpreschool.com.hk
Year founded: 2011
Curriculum: International

Mount Kelly Hong Kong Babies and Toddlers Centre

38 Kwun Chung Street, Jordan, Kowloon, Hong Kong
Tel: 2317 8881
Email: admissions@mountkelly.edu.hk
Website: www.mountkellytoddlers.com.hk
Mount Kelly International Preschool and Nursery School
38 Kwun Chung Street, Kowloon, Hong Kong
Preschool Phone No.: 2736 0800
Nursery School Phone No.: 2736 8688
Email: admissions@mountkelly.edu.hk
Website: www.mountkellypreschool.edu.hk
Mount Kelly Hong Kong (Primary and Secondary)
152 Austin Road, Tsim Sha Tsui, Kowloon, Hong Kong
Tel: 2157 9557

Email: admissions@mountkelly.edu.hk
Website: www.mountkellyprep.edu.hk
Year Founded: 2017
Curriculum: Early Years Foundation Stage For Nursery School and Preschool/English National Programme for Primary & Secondary



Mui Wo OWLS School & Kindergarten

1/F, Unit A, Silver Centre Building, Mui Wo Ferry Pier Road, Mui Wo, Lantau
Tel: 2984 0006
Email: office@muiwoowlsschool.edu.hk
Website: www.muiwoowlsschool.edu.hk
Year founded: 2010
Curriculum: English

Mulberry House Mandarin House

Studio 2403, Universal Trade Center, 17-19 Caine Road, Central (Parking on Arbuthnot Road)
Tel: 5598 0509
Website: www.mulberryhouseasia.com

Munsang College Kindergarten

G/F-1/F, Block A & G/F-2/F, Block F, 8 Dumbarton Road, Kowloon City
Tel: 3655 3500
Website: www.munsang.edu.hk
Year Founded: 1926

Mynors International Kindergarten

Portion A, Commercial Unit, Shop 1-11, 1/F Belair Monte Shopping Centre, 3 Ma Sik Road, Fanling
Tel: 2355 7500
Website: www.mynors.hk

Nord Anglia International School Hong Kong

Primary & Secondary Campus
11 On Tin Street, Lam Tin, Kowloon
Pre-school
Red Hill Plaza, Red Hill Road, Tai Tam, Hong Kong
Pre-school
285 Hong Kin Road, Tui Min Hoi, Sai Kung, N.T.
Tel: 3958 1428
Email: admissions@nais.hk
Website: www.nais.hk
Year founded: 2014
Curriculum: English, IGCSE, IBDP



Norwegian International School Kindergarten Campus

175 Kwong Fuk Road, Tai Po
Tel: 2638 0269
Email: kinder@nis.edu.hk
Primary School Campus
170 Kam Shan Road, Kam Shan Village, Tai Po
Tel: 2658 0341
Email: office@nis.edu.hk
Website: nis.edu.hk
Year founded: 1984
Curriculum: IPC, UK Literacy Curriculum, Australian Mathematics Curriculum

Oisca Japanese Kindergarten

G/F Ming Yuen Mansion, 26-48 Peacock Road, North Point
Tel: 2775 5899
Website: www.oisca-youchien.ne
Year Founded: 1986

Oxbridge School

G/F B & 1F, Star Ruby, 1 San Wai Street, Hung Hom, Kowloon
Tel: 2612 1888
Email: admissions@oxbridgeschool.hk
Website: www.oxbridgeschool.hk



Parkview International Pre-School Hong Kong Island Campus

Tower 18, Parkview,
88 Tai Tam Reservoir Road, Hong Kong
Tel: 2812 6023
Email: pipsinfo@pips.edu.hk
Year founded: 1989

Curriculum: International Baccalaureate (IB) Kowloon Campus

Podium Level, Kowloon Station,
1 Austin Road West, Kowloon
Tel: 2812 6801
Email: pipsinfo-klm@pips.edu.hk
Website: www.pips.edu.hk
Year founded: 2007
Curriculum: International Baccalaureate (IB)

Parkview Rhine Garden Preschool

Tower 1, 1st Floor, Rhine Garden,
38 Castle Peak Road, Sham Tseng, N.T.
Tel: 2491 1082
Email: school@pipsrg.edu.hk
Year founded: 1994

Parkview-Rhine Garden International Nursery

Tower 5, 1st Podium Level 2, Rhine Garden,
38 Castle Peak Road, Sham Tseng, N.T.
Tel: 2496 2080
Email: school@pipsrg.edu.hk
Website: pipsrg.edu.hk
Year founded: 1994

Po Leung Kuk Choi Kai Yau School

6 Caldecott Road, Piper's Hill, Kowloon
Tel: 2148 2052
Email: info@cky.edu.hk
Website: www.cky.edu.hk
Year founded: 2002
Curriculum: Own, IGCSE, IBDP

Pods Kindergrten & Preschool Tin Hau Campus

11 Tin Hau Temple Road, Tin Hau, Hong Kong
Tel: 3460 3560
Harbour Heights Campus
G01B & 1/F, Harbour Heights,
1 Fook Yum Road, North Point, Hong Kong
Tel: 2242 2261
Email: info@pods.com.hk
Website: www.pods.com.hk
Year founded: 2013
Curriculum: Own

Renaissance College ESF

5 Hang Ming Street, Ma On Shan
Tel: 3556 3556
Email: admissions@rchk.edu.hk
Website: www.rchk.edu.hk
Year founded: 2006
School Type: Private
Curriculum: IB Primary Years Programme,
IB Middle Years Programme, IB Diploma,
IB Career-related Programme

Rightmind International Nursery & Kindergarten

Shum Wan Campus
G/F, Broadview Court, No. 11 Shum Wan Road, Hong Kong
Tel: 2795 1018
South Horizons Campus

UG/F, Tower 26-28, South Horizons, Phase 4, Ap Lei Chau
Tel: 2875 0452
Email: parentservice@kinderu.org
Website: www.rmkg.org
Year founded: 1980
Curriculum: Other

Rosebud Primary School

UG 28-37 Waterside Plaza, 38 Wing Shun Street, Tsuen Wan
Tel: 2406 7300
Email: info@rosebud.edu.hk
Website: www.rosebud.edu.hk
Year Founded: 2004
Curriculum: IPC

Safari Kid International Kindergarten

Happy Valley Campus
16 Min Fat Street, Happy Valley, Hong Kong
Tel: 2177 0001
Email: happyvalley@safarikidasia.com
Pok Fu Lam Campus
L101 Chi Fu Landmark, Chi Fu Fa Yuen, Pok Fu Lam
Tel: 2177 0001
Email: infohk@safarikidasia.com
Website: www.safarikidasia.com
Year founded: 2005
Curriculum: Other

Sai Kung International Pre-school

159 Che Keng Tuk Road, Sai Kung
Tel: 2791 7354
Email: skip@skip.edu.hk
Website: skip.edu.hk
Year founded: 1989
Curriculum: Early Years Foundation Stage

Sai Kung Montessori

Unit SB, 787 Tan Cheung, Po Tung Road, Sai Kung
Tel: 5369 8587
Email: info@saikungmontessori.com
Website: www.saikungmontessori.com
Year Founded: 2017
Curriculum: Montessori

Saint Bright International Kindergarten

G/F & 1/F, Cameron Mansion,
29-31 Lion Rock Road, Kowloon City
Tel: 2337 5255
Website: www.stbrigt.edu.hk
Year Founded: 2014

Sear Rogers International School

15 Tong Yam Street, Tai Hang Tung, Kowloon
Tel: 2547 5479
Email: enquiry@srishk.com
Website: www.srishk.com
Year founded: 1982
Curriculum: English, IGCSE, A-Levels

SDM-Chatsworth International Kindergarten & Nursery

166 Boundary Street, Kowloon Tong
Tel: 2560 3322
Email: info@sdm-chatsworth.hk
Website: www.sdm-chatsworth.hk
Year Founded: 2017
Curriculum: Singapore-based curriculum

Shrewsbury International School Hong Kong

10 Shek Kok Road, Tseung Kwan O, New Territories
Tel: 2480 1500
Email: admissions@shrewsbury.edu.hk
Website: www.shrewsbury.edu.hk
Year founded: 2018
Curriculum: English National Curriculum



Singapore International School Preparatory Years and Primary Section

23 Nam Long Shan Road, Aberdeen
Tel: 2872 0266
Email: general@singapore.edu.hk
Secondary Section
2 Police School Road, Wong Chuk Hang, Hong Kong
Tel: 2919 6966
Email: secondary@singapore.edu.hk
Website: www.singapore.edu.hk
Year founded: 1991
Curriculum: Singapore curriculum, IGCSE, IBDP

Small World Christian Kindergarten

10 Borrett Road, Mid-Levels
Tel: 2525 0922
Email: office@smallworld.edu.hk
Website: smallworld.edu.hk
Year founded: 1986
Curriculum: International

Spanish Primary School

130 Shuen Wan Chan Uk Tai Po, N.T., Hong Kong
Tel: 3955 1588
Email: info@spis.com.hk
Website: www.spis.com.hk

St. Catherine's International Kindergarten Campus 1

1 Essex Crescent, Kowloon Tong
Tel: 2337 7273
Website: www.stcatherines.edu.hk
Year Founded: 1970

Campus 2

4 & 6 Norfolk Road, Kowloon Tong
Tel: 2337 7344 / 2337 7680
Website: www.stcatherines.edu.hk
Year Founded: 1970

St. Catherine's Kindergarten (Harbour Place)

1/F Harbour Place, 8 Oi King Street, Hung Hom
Tel: 2670 6600
Website: www.stcatherines.edu.hk
Year Founded: 2011

St. Paul's Covent School (Secondary Section)

140 Leighton Road, Causeway Bay, Hong Kong
Tel: 2576 0601
Website : www.spcs.edu.hk
Year founded: 1854
Curriculum: HKDSE, IGCSE, A-Levels

St. Stephen's College

22 Tung Tau Wan Road, Stanley, Hong Kong
Tel: 2813 0360
Email: sschk@ssc.edu.hk
Website: www.ssc.edu.hk
Year founded: 1903
Curriculum: IBDP, HKDSE

Stamford American School Hong Kong

25 Man Fuk Road, Ho Man Tin
Tel: 2500 8688
Email: admissions@sais.edu.hk
Website: www.sais.edu.hk
Year founded: 2017
Curriculum: Inquiry-based American
Curriculum with AERO and Common Core Plus Standards

Sunshine House International Pre-school Chi Fu Campus

G/F, Block 1, Fu Lai Yuen, Chi Fu Fa Yuen,
1 Chi Fu Road, Pok Fu Lam
Tel: 2551 3781
Email: chifu@sunshinehouse.com.hk

Clearwater Bay Campus

Level 7, Silverstrand Mart,
No. 2 Silver Cape Road, Clearwater Bay, Sai Kung
Tel: 2358 3803

Email: clearwaterbay@sunshinehouse.com.hk

Discovery Bay Campus

Shop 106, 1/F, Blk 6, Discovery Bay North Development,
Discovery Bay, Lantau Island
Tel: 2259 4066

Email: dbay@sunshinehouse.com.hk

Pok Fu Lam Campus

Commercial Development Block A, Pok Fu Lam Gardens
Tel: 2551 3213

Email: pokfulam@sunshinehouse.com.hk

Tung Chung Campus

No. 2 Mei Tung Street,
Tung Chung Crescent, Lantau Island
Tel: 2109 3873
Email: tungchung@sunshinehouse.com.hk
Website: www.sunshinehouse.com.hk

Year founded: 1990

Curriculum: Other

The Harbour School

Harbour Village (Kindergarten Campus)
23 Belcher's Street,
2/F Kennedy Town Center, Kennedy Town
The Grove (Primary Campus)
332 Ap Lei Chau Bridge Road, Ap Lei Chau
The Garden (Secondary Campus)
138 Lee Chi Road, Ap Lei Chau
Tel: 3612 1090
Email: admissions@ths.edu.hk
Website: www.ths.edu.hk
Year founded: 2007
Curriculum: American

The International Montessori School of Hong Kong

Aldrich Bay Campus

G/F, i-UniQ Grand, 155 Shau Kei Wan Road,
Shau Kei Wan, Hong Kong
Tel: 2156 9033
Email: admin.ab@ims.edu.hk

Mid-Level Campus

Mezzanine Entrance, Tung Fai Gardens,
17 Po Yan Street, Sheung Wan, Hong Kong
Tel: 2857 7007

Email: admin.ml@ims.edu.hk

South Horizons Campus

G/F, Blocks 23 to 23A, South Horizons,
Phase III, Ap Lei Chau, Hong Kong
Tel: 2861 0339

Email: admin.sh@ims.edu.hk

Stanley Campus

Phase III, Ma Hang Estate,
Stanley (off Stanley Plaza), Hong Kong
Tel: 2566 7196

Email: admin.st@ims.edu.hk

Website: www.ims.edu.hk

Year founded: 2002

Curriculum: Montessori

The ISF Academy

1 Kong Sin Wan Road, Pokfulam, Hong Kong
Tel: 2202 2028
Email: admissions@isf.edu.hk
Website: academy.isf.edu.hk

Year founded: 2003

Curriculum: Own, IBMYP, IBDP



The ISF Pre-School

Shop G01, G/F, 97 Belcher's Street,
Kennedy Town, Hong Kong
Tel: 2559 8518
Email: psenquiry@isf.edu.hk
Website: preschool.isf.edu.hk
Year founded: 2015
Curriculum: Other

The Woodland Montessori Academy (Caine Road)

G/F -3/F, On Fung Building,
110-118 Caine Road, Mid-Levels
Tel: 2549 1211
Email: montessoricr@woodlandschools.com

The Woodland Pre-School Repulse Bay Montessori Campus

Shop G118-G119, G/F,
The Repulse Bay, 109 Repulse Bay Road
Tel: 2803 1885
Email: montessoribr@woodlandschools.com

Beachside (Repulse Bay) Campus

35 Beach Road, Repulse Bay
Tel: 2812 0274
Email: beachside@woodlandschools.com

Kennedy Town Campus

G/F, 1/F & 2/F, Hau Wo Building,
3C Davis Street, Kennedy Town
Tel: 2817 2011
Email: kennedytown@woodlandschools.com

Pokfulam Campus

Shop 29, G/F, Commercial Complex,
Wah Fu Estate II, Pokfulam
Tel: 2551 7177
Email: pokfulam@woodlandschools.com

Harbourside Campus

G/F, Ocean Court, 3 Aberdeen Praya Road, Aberdeen
Tel: 2559 1377
Email: whs@woodlandschools.com

Happy Valley Campus

G/F, 2 Hawthorn Road, Happy Valley
Tel: 2575 0042
Email: happyvalley@woodlandschools.com

Sai Kung Campus

Shop D, G/F, Marina Cove Shopping Centre,
Sai Kung, New Territories
Tel: 2813 0290
Email: saikung@woodlandschools.com

Website: www.woodlandschools.com

Year Founded: 1978

Curriculum: Early Years Foundation Stage of the British National Curriculum and Montessori learning approaches

Think International Academy

11 Kwong Lee Road, Cheung Sha Wan
Tel: 2157 2111
Email: think_ta@think.edu.hk
Website: www.think.edu.hk
Year founded: 2016
Curriculum: IBPYP, Cambridge CIE Secondary 1 & 2, IBDP

Think International School

117 Boundary Street, Kowloon Tong, Kowloon
Tel: 2338 3949
Email: think_tis@think.edu.hk

Ace Academy

1305 Universal Trade Center, 3 Arbuthnot Road, Central
Tel: 2523 5533
Email: info@AceAcademy.com
Website: www.AceAcademy.com

Aegis Advisors

16/F Vulcan House, 21-23 Leighton Road, Causeway Bay
Tel: 8175 5687
Email: inquiries@aegis-advisors.com
Website: aegis-advisors.com

Aria Academy of Music (AAM)

2402-03, 24/F, Keen Hung Commercial Building,
 80 Queen's Road East, Admiralty
Tel: 2622 2033
Email: aam@ariamusic.com.hk
Website: www.ariamusic.com.hk
Curriculum: Classical singing, musical theatre,
 piano, musicianship training, music theory
Year Groups: Ages 3-16, and above

Ars Mathematica Education Centre

Shop 835A, Level 8, Fortune Metropolis,
 6 Metropolis Drive, Hunghom
Tel: 9243 0550
Email: admin@artofmath.edu.hk
Website: www.artofmath.edu.hk
Year Founded: 2017

Baby Steps

25/F, 2501-2502 Universal Trade Centre
Entrance 1: 3-5A Arbuthnot Road, Central, HK
Entrance 2: 17-19 Caine Road, Central
Tel: 2887 7585
Email: enquiries@babysteps.com.hk
Website: www.babysteps.com.hk

Bebegarten Education Centre

Unit 301-305, Level 3,
 One Island South, 2 Heung Yip Road, Wong Chuk Hang
Tel: 3487 2255
Email: info@bebegarten.com
Website: www.bebegarten.com
Year Founded: 2013
Curriculum: Other

Capstone Prep Education Center

Primary Section
 5-6/F, 111 Leighton Road, Causeway Bay, Hong Kong
Tel: 2893 6067
Secondary Section
 2/F, One Hysan Avenue, Causeway Bay, Hong Kong
Tel: 2893 6060
Email: info@capstoneprep.com
Website: www.capstoneprep.com
Year founded: 2003

City Kids Preschool & Playgroup

2nd Floor, East Wing, 12 Borrett Road, Mid Levels, Hong Kong
Tel: 2522 4446
Email: officemanager@citykidshk.org
Website: www.citykidshk.org
Year founded: 1984
Curriculum: Early Years Foundation Stage

De la mano Spanish

Tel: 9317 7006
Email: info@delamanospanish.com
Website: www.delamanospanish.com

Eye Level Hong Kong

Unit 601, Island Place Tower,
 510 Kind's Road, North Point, HK
Tel: 2104 0188
Email: hongkong@myeyelevel.com
Website: www.myeyelevel.com

First Code Academy

5/F, Gee Tuck Building,
 16-20 Bonham Strand, Sheung Wan
 (Opening June 25, 2018)
Tel: 2772 2108
Email: hello@firstcodeacademy.com
Website: www.firstcodeacademy.com
Year Founded: 2013
Year groups: Tinker: Age 6-8; Explorer: Age 9-11;
 Creator: Age 12-14; App Entrepreneur: 15+

Foundation Global Education

13/F, Chinachem Hollywood Centre,
 1 Hollywood Road, Central, Hong Kong
Tel: 3107 8810
Email: info@foundationge.com
Website: www.foundationge.com

Goethe-Institut Hong Kong

14/F HK Arts Centre, 2 Harbour Road,
 Wanchai, Hong Kong
Tel: 2802 0088
Email: info@hongkong.goethe.org
Website: goethe.de

Groots Education Centre

Shop No. 33, 1/F Corinthia By The Sea,
 23 Tong Yin Street, Tseung Kwan O
Tel: 2566 9928
Email: contact@grooteducation.com

Kip McGrath Education Centre

Shop B, G/F, Caineway Mansion,
 132 Caine Road, Mid-levels, HK
Tel: 2291 6188
Email: enquiries@kipmcgrath.com.hk
Website: kipmcgrath.com.hk
Year founded: 1989

Le Club des cinq French Learning Centre

2F King Dao Building,
 14 Burrows Street, Wanchai
Tel: 2575 4555 / 9773 7941
Email: contact@clubdes5.hk

Lee Educational Consulting

1625A, 16th Floor, Star House,
 No. 3 Salisbury Road, Tsim Sha Tsui, Hong Kong
Mobile: 9416 0798
Wechat: ljasonkh
Website: www.leeeducation.com

Monkey Tree English Learning Center (Head Office)

Room 2801, 28/F Citicorp Centre,
 18 Whitfield Road, Hong Kong
Tel: 3563 6771
Email: enquiry@monkeytree.com.hk
Website: www.monkeytree.com.hk

Mini Mandarins Learning Centre Causeway Bay Centre

7/F, Capital Commercial Building,
 26 Leighton Road, Causeway Bay
Tel: 2320 1128
Email: info@minimandarins.com
Central Centre

Room 1703 17/F Universal Trade Centre,
 No. 3-5A Arbuthnot Road, Hong Kong
Tel: 2320 5208
Email: central@minimandarins.com
Website: www.minimandarins.com
Year founded: 2014

NTK Academic Group

Main Campus
 3-5/F & 7/F (Front office),
 Lee Garden Five, 18 Hysan Avenue, Causeway Bay
Tel: 2577 7844
Email: enquiry@ntk.edu.hk

Kowloon Campus

2/F, the Avery, 16 Hau Wong Road, Kowloon City
Tel: 2718 3000
Email: enquiry@ntk.edu.hk
Website: www.ntk.edu.hk
Year founded: 1996
Curriculum: SAT, AP, TOEFL, IB, IELTS

Spanish World Leading Language Group

701, 7/F Lap Fei Building,
 6-8 Pottinger Street, Central, Hong Kong
Tel: 2526 9927
Email: hk@spanishworldgroup.com
Website: www.spanishworld.hk

The Edge Learning Center Causeway Bay

2F, Zoroastrian Building,
 101 Leighton Road, Causeway Bay
Tel: 2972 2555
Mong Kok
 Unit A, 2/F, Silvercorp International Tower
 707-713 Nathan Road, Mong Kok
Tel: 2783 7100
Email: info@theedge.com.hk
Website: www.theedge.com.hk

YLPSK & GAPSK

Room 1601, 16/F, Chow Tai Fook Centre,
 No. 580A-F Nathan Road,
 MongKok, Kowloon, Hong Kong
Tel: 3101 0800
Email: info@ylpsk.org
Email: info@gapsk.org
Website: www.ylpsk.org
Website: www.gapsk.org



Back to
SCHOOL
 with
Walch

Kills
99.9%
 of Germs*



Walch Wet Wipes 10s

Walch Hand Sanitizer
20ml Original
with silicone keychainWalch Hand Sanitizer
20ml Chamomile
with silicone keychain



瑪歌瑞特國際幼稚園
MAGART INTERNATIONAL KINDERGARTEN



瑪歌瑞特學習發展獎學金

ACADEMIC SCHOLARSHIP

(up to \$16,425)

- ✓ Transfer Students
- ✓ Joint Applicants
- ✓ Full Day Students



崇禮尚教 全人發展
Character Education & Academic Excellence



英國 EYFS 課程
UK EYFS Curriculum



中華儒家文化
Confucian Culture



MAGART Learning Path - Natural Transitions from 6 months to 6 years old

Curious Crawlers
(6-12 mos)

Little Explorers
(1-2 yrs)

Young Discoverers
(2-3 yrs)

Pre-Nursery
(2-3 yrs)

Nursery
(3-4 yrs)

Lower Kinder
(4-5 yrs)

Upper Kinder
(5-6 yrs)

Whampoa

Shop G3A, Site 7, Whampoa Garden, 9 Tak On Street, Whampoa (Whampoa MTR Exit D2)

T: 2786 9314 9879 1509
E: info.wp@magartedu.com

Tai Koo

Shop B, UG/F, Park Vale, No. 1060 King's Road, Tai Koo (Tai Koo MTR Exit B)

T: 2786 9189 6717 3175
E: info.tk@magartedu.com

Fanling

G/F, Phase 1, Fanling Centre, New Territories (Fanling Station Exit A)

T: 2677 8109 9445 8322
E: info.fl@magartedu.com