

Novel derivatives of eugenol as potent anti-inflammatory agents via PPAR γ agonism: Rational design, synthesis, analysis, PPAR γ protein binding assay, and computational studies

Noor Fathima Anjum^a, Dhivya Shanmugarajan^b, Vasanth Kumar Shivaraju,^c Syed Faizan^b,
Namburu Lalitha Naishima^b, Prashantha Kumar BR^b, Saleem Javid^a, Madhusudan N.
Purohit^{b*}

^a*Department of Pharmaceutical Chemistry, Farooqia College of Pharmacy, Mysuru 570 015, India.*

^b*Department of Pharmaceutical Chemistry, JSS College of Pharmacy, Mysuru 570 015, India. JSS Academy of Higher Education & Research, Mysuru 570 015, India.*

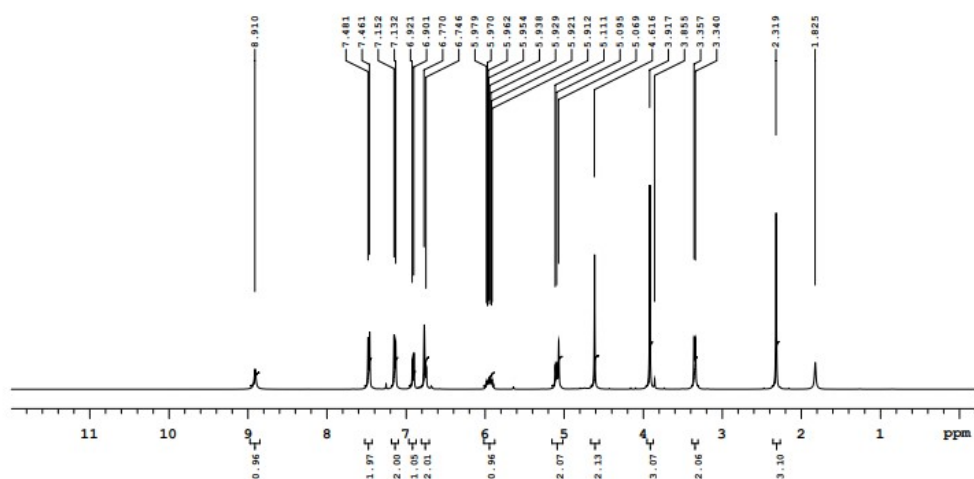
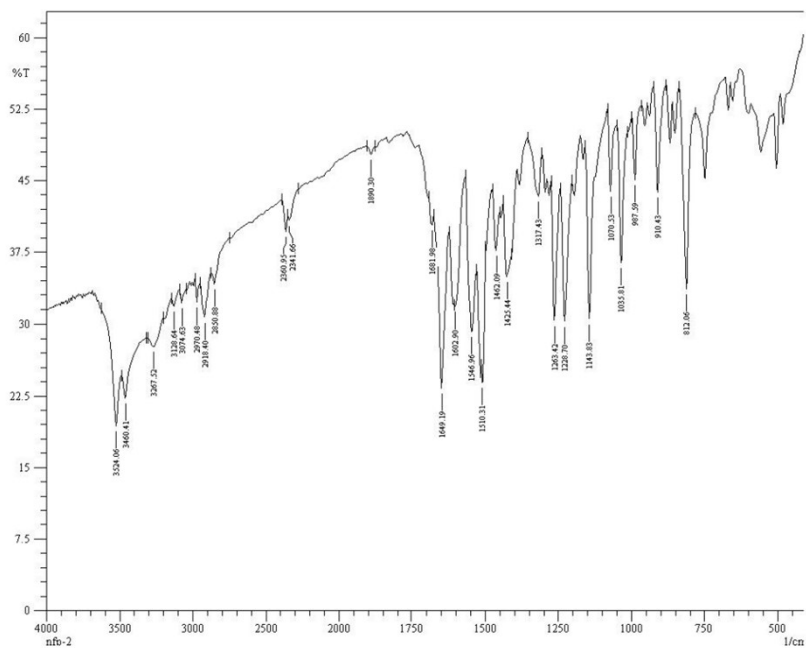
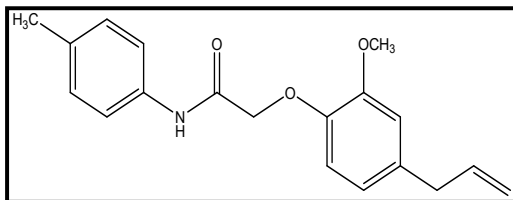
^c*DOS in Chemistry, Karnataka State Open University, Mukthagangothri, Mysuru 570 006, India.*

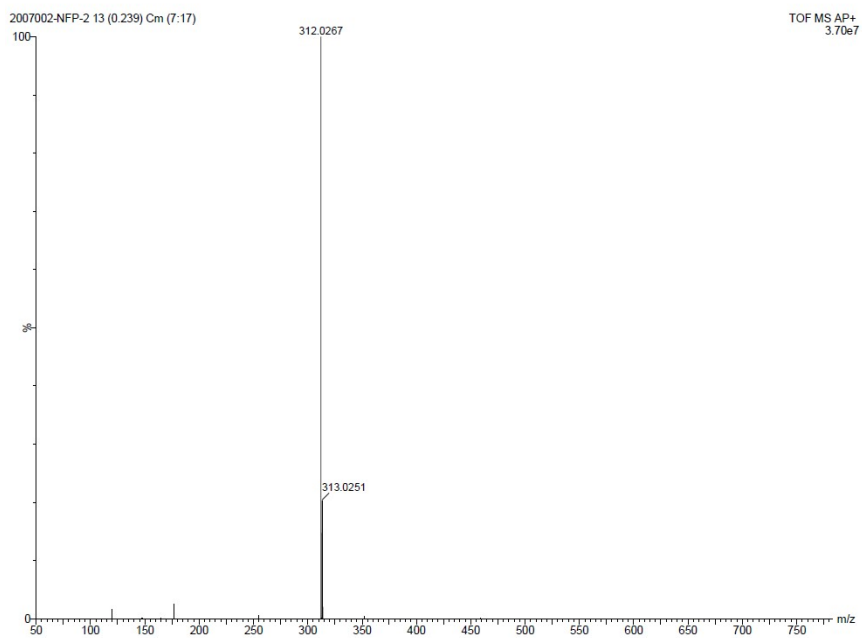
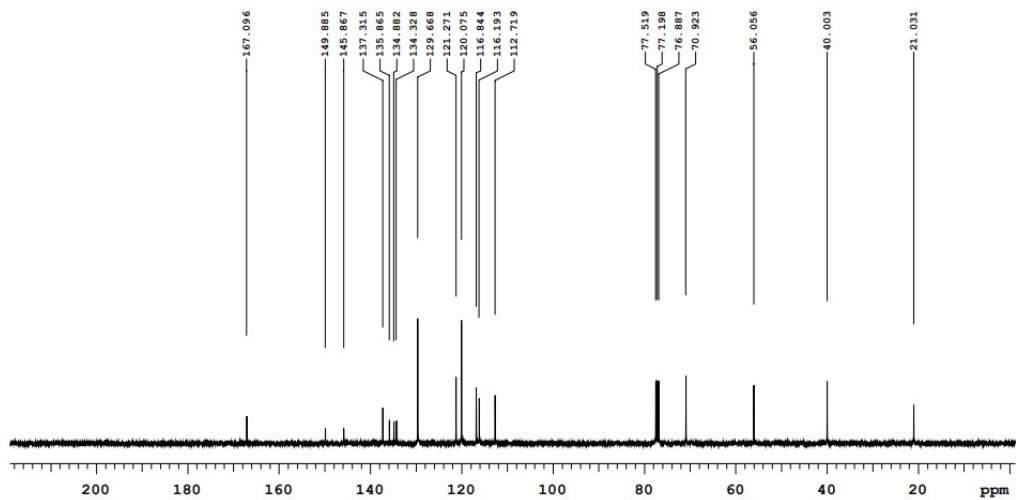
Supplementary Material

CONTENTS	Page No.
1. Spectra.....	2-9
2. TR-FRET Assay.....	10-11

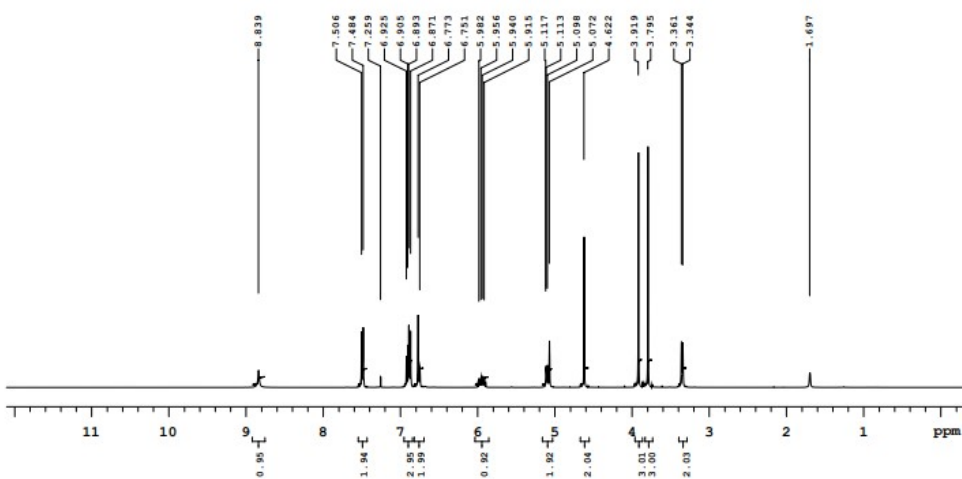
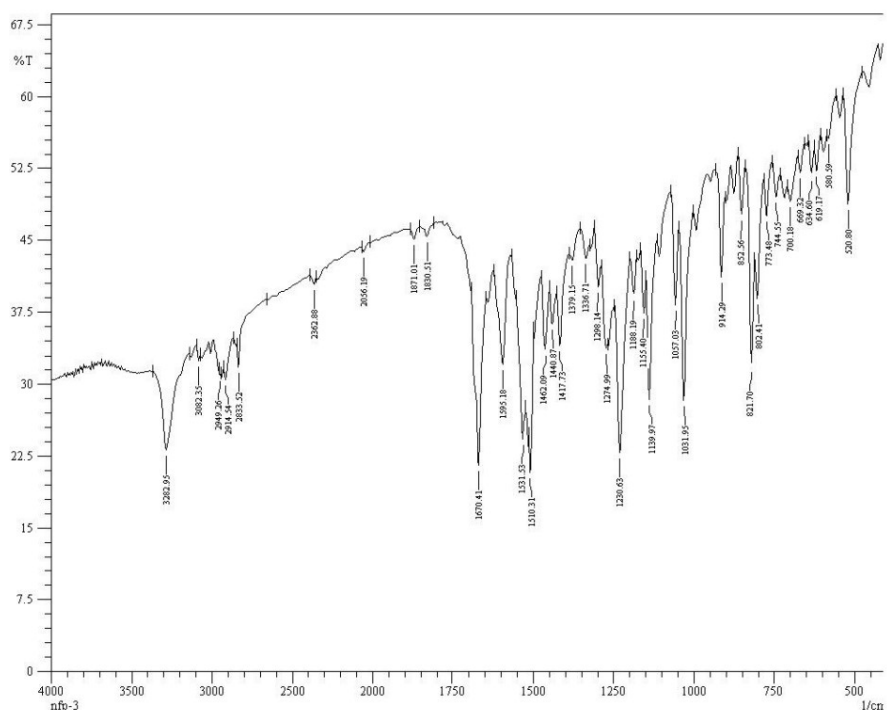
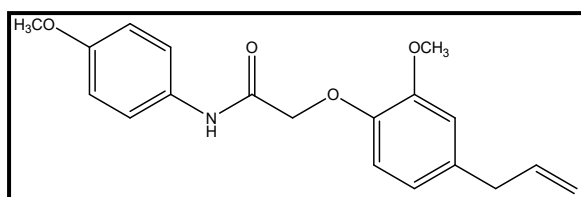
Spectra of synthesized compounds

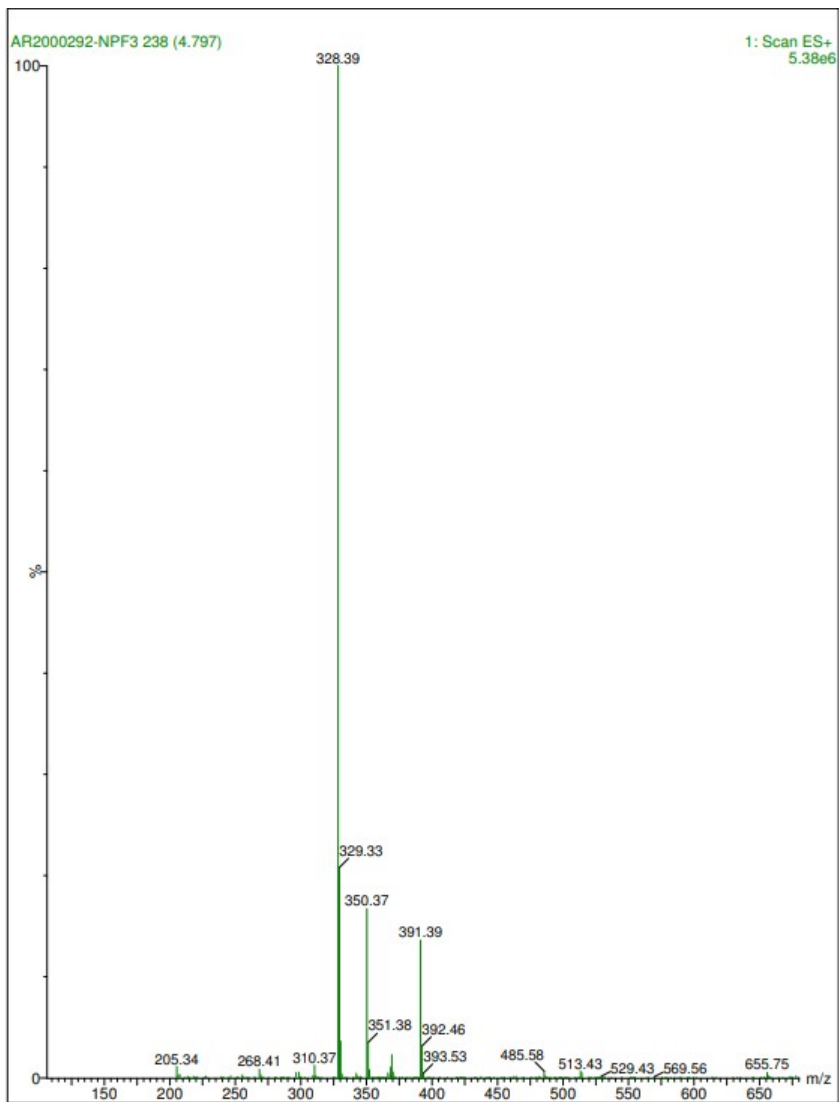
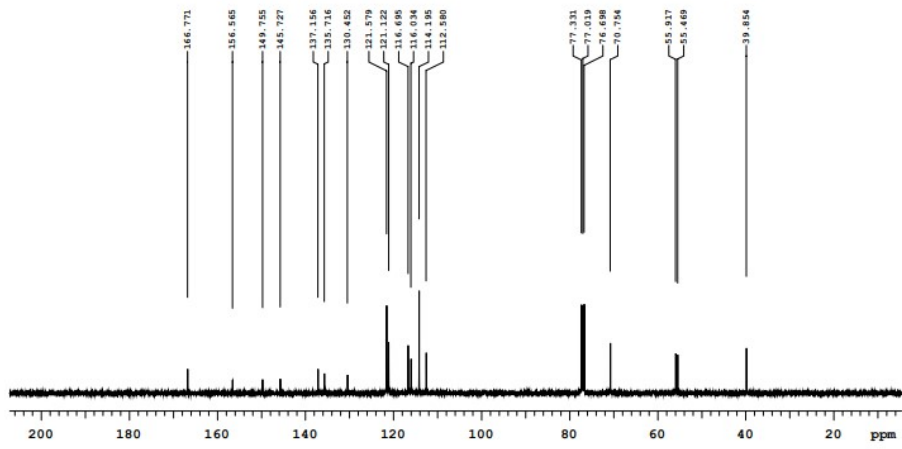
1. IR, ^1H NMR, ^{13}C NMR & Mass Spectra of compound 1A



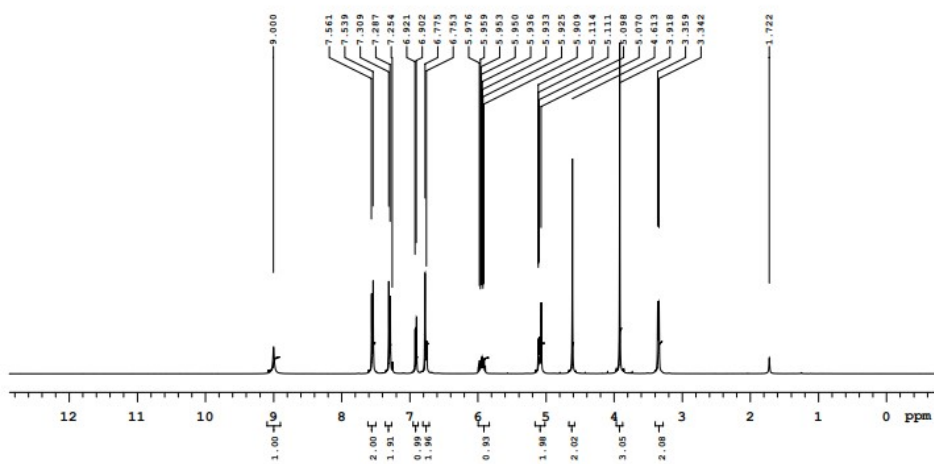
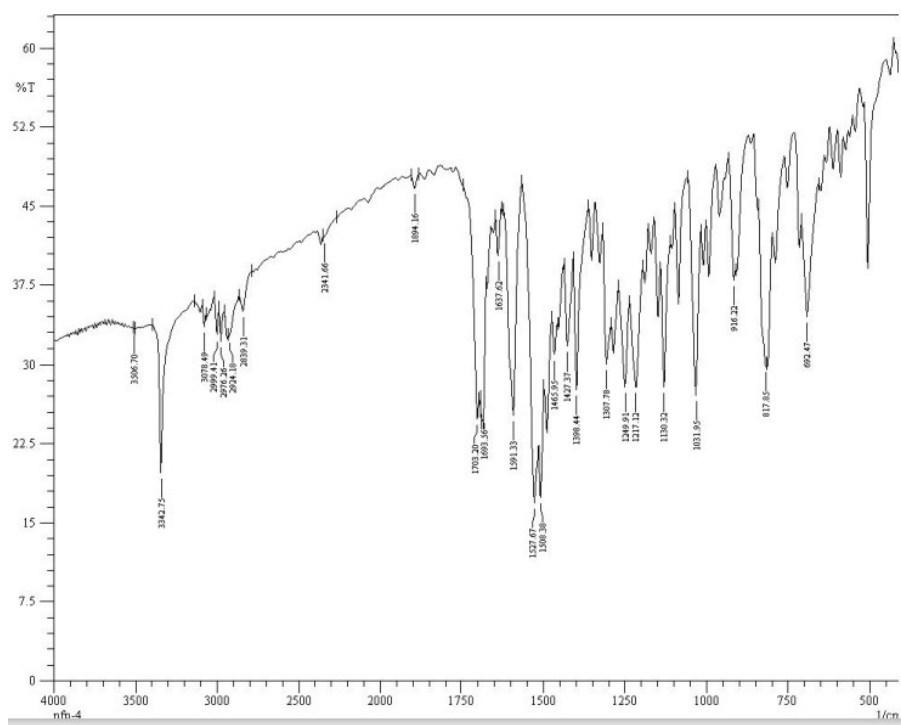
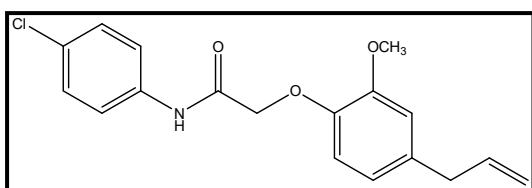


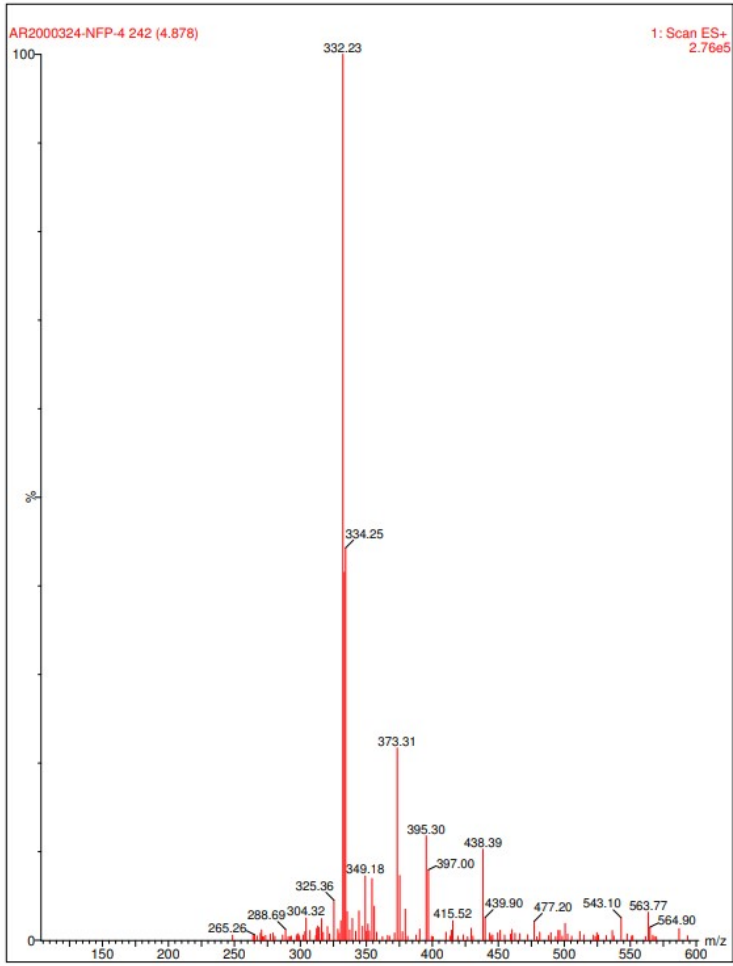
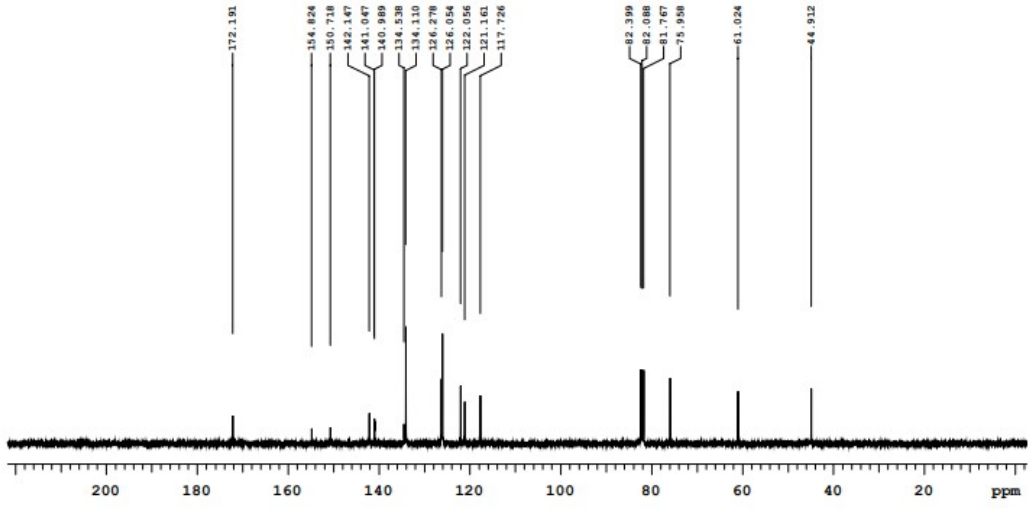
2. IR, ¹H NMR, ¹³C NMR & Mass Spectra of compound 1B



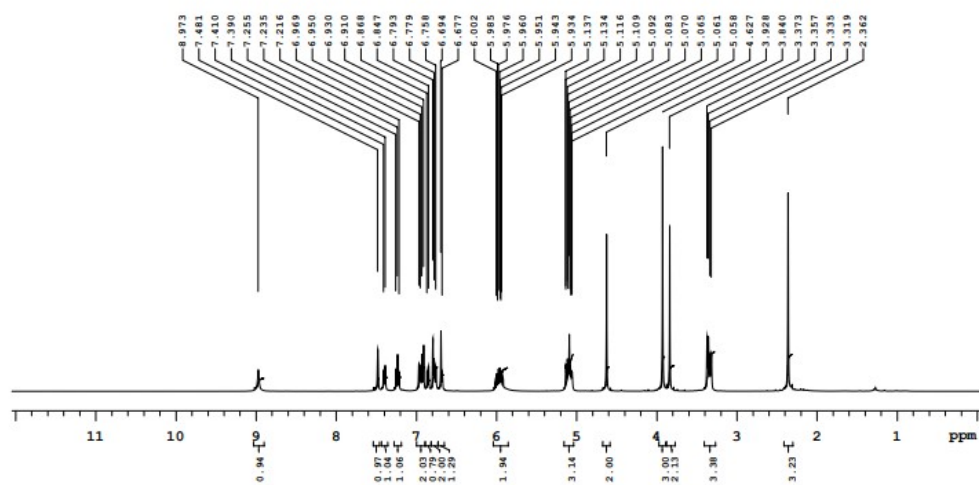
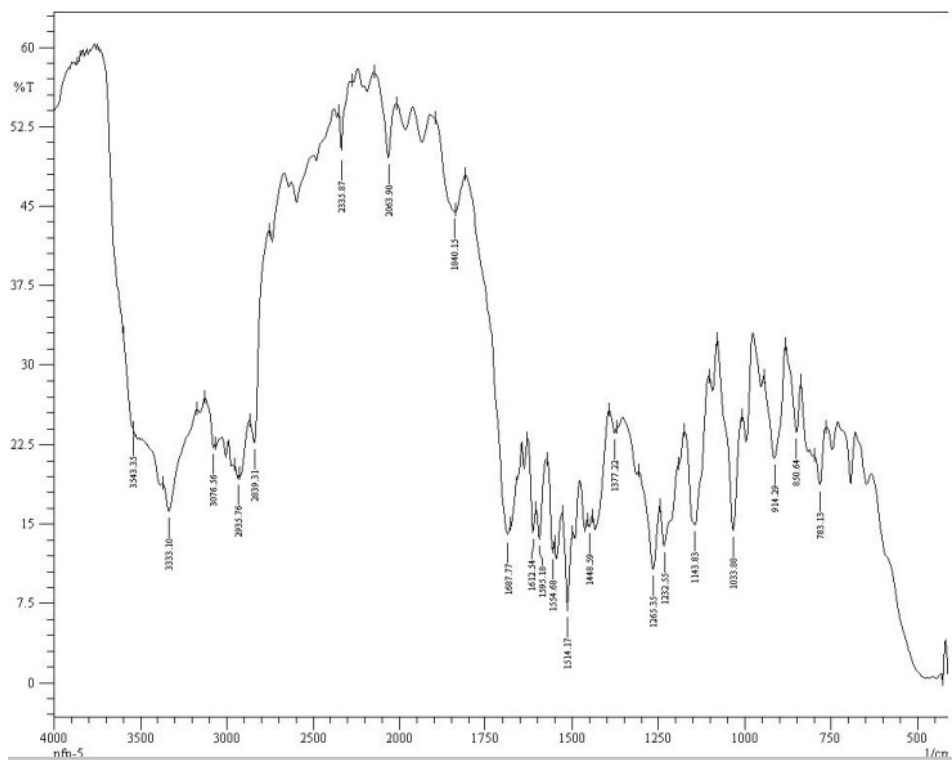
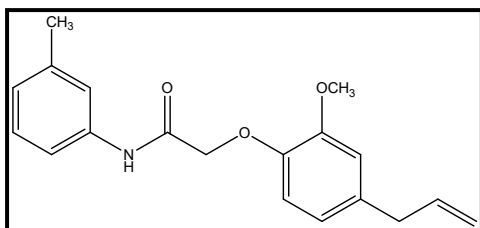


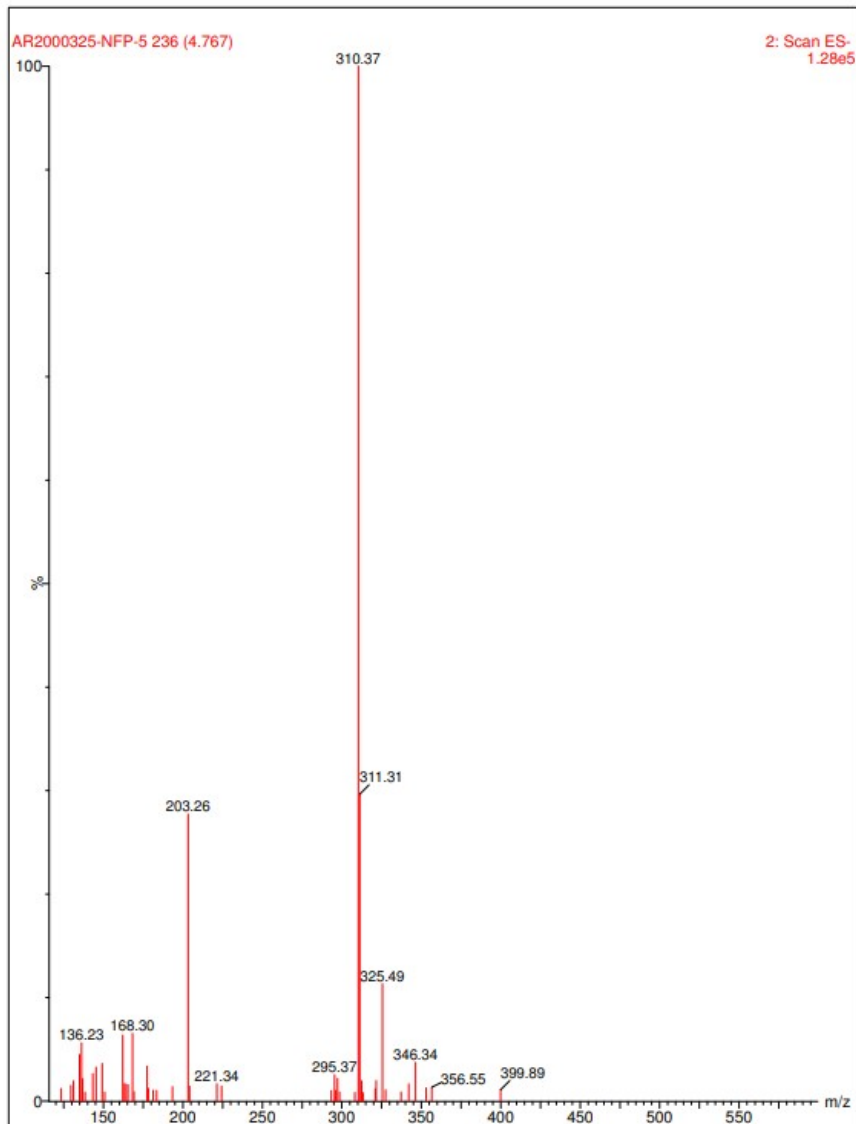
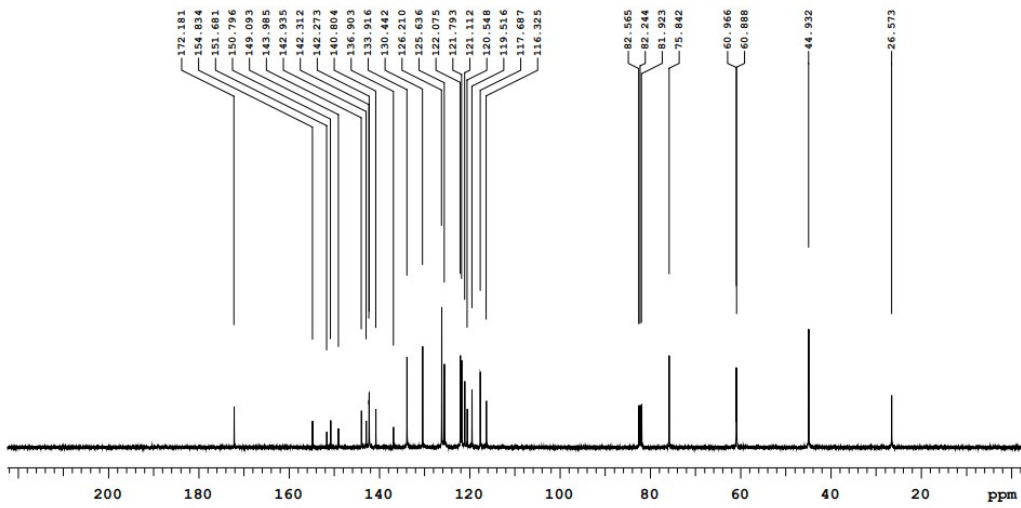
3. IR, ^1H NMR, ^{13}C NMR & Mass Spectra of compound 1C





3. IR, ^1H NMR, ^{13}C NMR & Mass Spectra of compound 1D





TR-FRET Assay:**Compound 1A**

SL No.	1A (Concentration (μM))	Raw Data (RLU)	Raw Data - Background (RLU)
1	100	0.54	0.300619419
2	20	1.07	0.839901744
3	4	1.57	1.33177375
4	0.8	1.99	1.754049283
5	0.16	1.95	1.715545715
6	0.032	2.00	1.760204347
7	0.0064	1.92	1.687764768
8	0.00128	2.02	1.787422152
9	0.000256	2.10	1.861679618
10	0.0000512	2.07	1.839505412

Compound 1B

SL No.	1B Concentration (μM)	Raw Data (RLU)	Raw Data - Background (RLU)
1	100	0.534	0.298879758
2	20	1.280	1.04507794
3	4	1.855	1.619466248
4	0.8	2.002	1.767370589
5	0.16	1.960	1.724473418
6	0.032	1.913	1.678017542
7	0.0064	1.913	1.678286208
8	0.00128	1.965	1.73005786
9	0.000256	1.990	1.754676693
10	0.0000512	2.024	1.788731767

Compound 1C

SL No.	1C Concentration (μM)	Raw Data (RLU)	Raw Data - Background (RLU)
1	100	0.951	0.716
2	20	1.058	0.823
3	4	1.761	1.526
4	0.8	1.922	1.687
5	0.16	1.921	1.686
6	0.032	1.989	1.754
7	0.0064	1.934	1.699
8	0.00128	1.907	1.672
9	0.000256	1.896	1.660
10	0.0000512	2.069	1.834

Compoundd 1D

SL No.	1D (Concentration (μM))	Raw Data (RLU)	Raw Data - Background (RLU)
1	100	1.40	1.17
2	20	1.91	1.67
3	4	1.91	1.67
4	0.8	1.91	1.68
5	0.16	1.87	1.64
6	0.032	1.93	1.70
7	0.0064	2.07	1.83
8	0.00128	1.85	1.61
9	0.000256	1.95	1.72
10	0.0000512	1.92	1.69