

Supplementary information

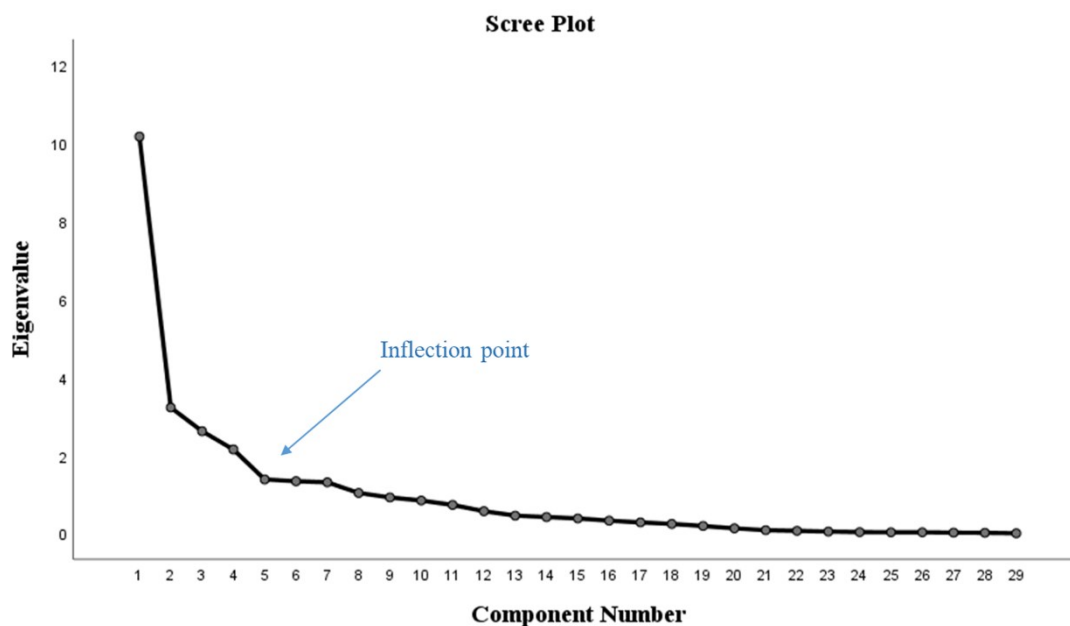


Fig. 1 Scree plot of eigenvalues for the 29 different types of fatty acids based on principal component analysis with varimax rotation.

Components with an eigenvalue >2 were retained.

Table 1 Rotated component matrix among the different fatty acid patterns

Fatty acid	Score coefficient			
	Pattern 1	Pattern 2	Pattern 3	Pattern 4
C4:0	0.358	0.058	0.106	0.828
C6:0	0.199	0.051	0.710	0.060
C8:0	0.325	0.075	0.872	-0.082
C10:0	0.712	0.035	0.462	-0.046
C12:0	0.563	0.050	0.744	-0.073
C14:0	0.881	0.135	0.335	0.027
C16:0	0.861	0.223	0.182	0.206

C18:0	0.897	0.265	0.094	0.104
C20:0	0.437	0.696	0.192	0.123
C22:0	0.201	0.850	0.059	0.042
C24:0	0.308	0.544	-0.228	-0.191
C14:1	0.583	-0.063	0.371	0.001
C16:1	0.764	0.176	0.248	0.179
C18:1	0.841	0.348	0.213	0.144
C20:1	0.270	0.884	0.147	0.065
C22:1	-0.129	0.738	0.535	0.012
C24:1	0.240	0.490	-0.347	-0.135
C16:2	0.534	0.117	-0.053	-0.062
C18:2	0.815	0.023	0.052	0.137
C18:3	0.495	0.552	0.132	0.022
C18:4	0.192	-0.003	-0.142	-0.221
C20:2	0.146	0.284	0.736	0.089
C20:3	0.363	0.056	0.095	0.825
C20:4	0.627	0.197	0.094	0.353
C20:5	0.262	-0.400	-0.116	0.045
C22:3	-0.060	-0.045	0.003	0.277
C22:4	0.216	-0.031	0.030	0.801
C22:5	0.096	-0.086	-0.001	0.725
C22:6	-0.052	0.087	-0.172	0.334
