

Towards personalized medicine: Chemosensitivity assays of patient lung cancer cell spheroids in a perfused microfluidic platform[†]

Received Xth XXXXXXXXXXXX 20XX, Accepted Xth XXXXXXXXXXXX 20XX

First published on the web Xth XXXXXXXXXXXX 200X

DOI: 10.1039/b000000x

Supplementary Figures

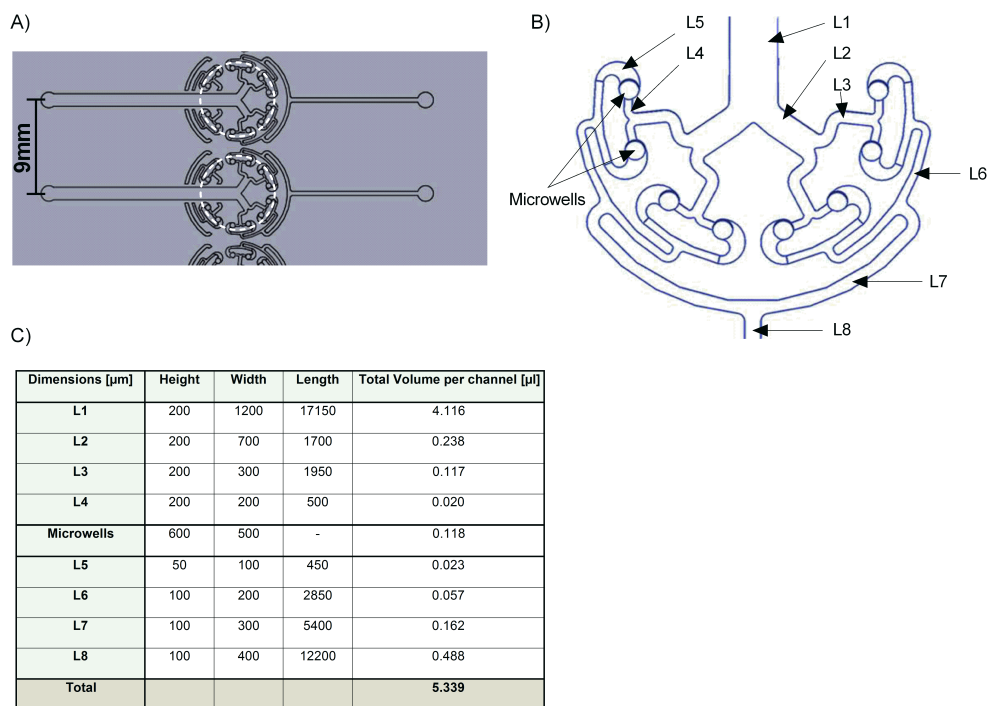


Fig. 1 S1: A) Overall view of the microfluidic design. The virtual line (white) represents the diameter of a well in a 96-well plate. B) Close up of the microfluidic branching. C) Table showing the dimensions of microfluidic system.

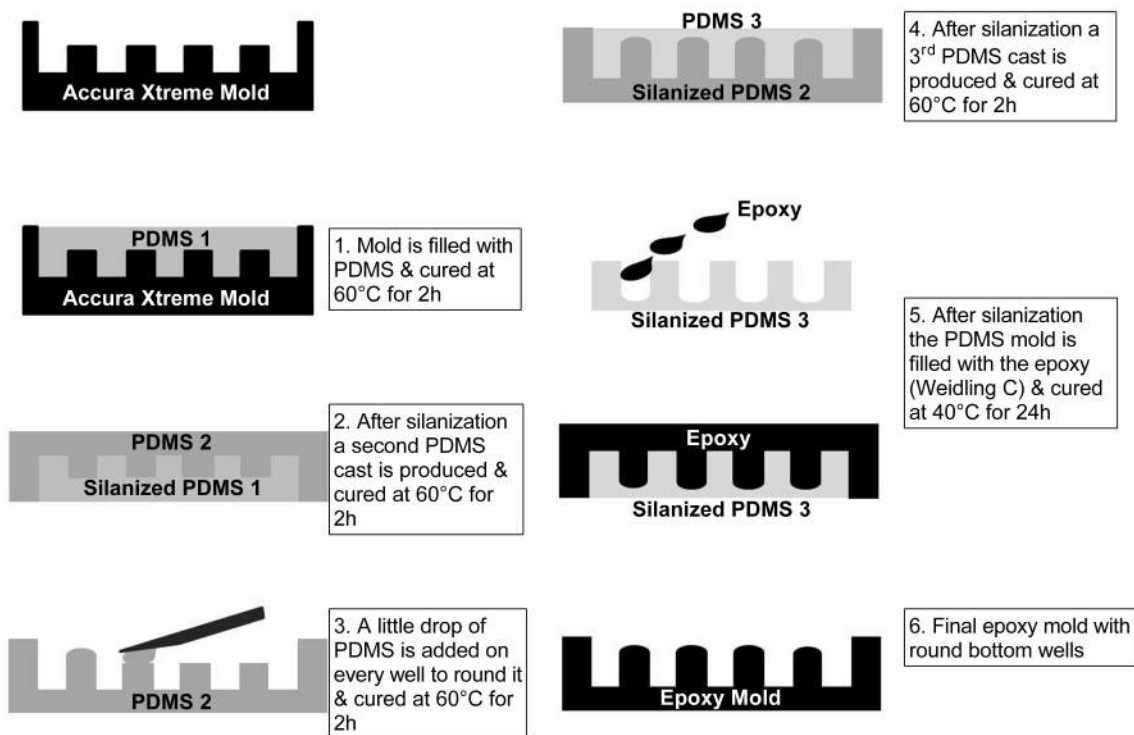


Fig. 2 S2: Fabrication processes of round bottom microwells.

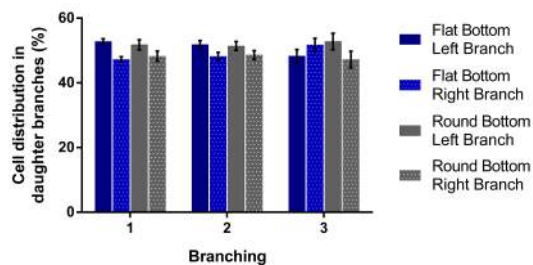


Fig. 3 S3: Graph showing the distribution of cells at the three branching points (1, 2 and 3). Data are presented as means \pm SEM. N=8

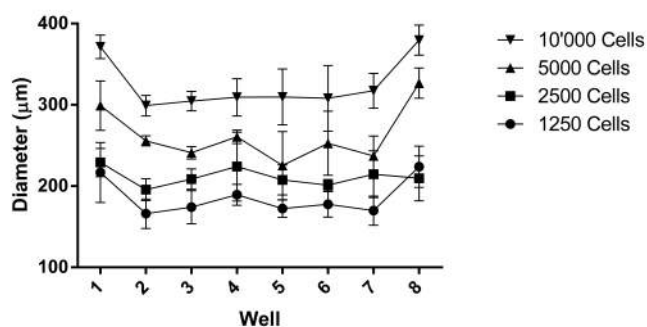


Fig. 4 S4: Spheroid diameter in function of the microwell position (three days after seeding). Data are presented as means \pm SD. N=4

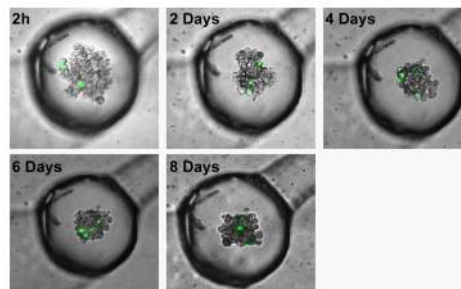


Fig. 5 S5: Proliferation of two CFSE stained cells within a small spheroid containing 150 cells. Scale bar corresponds to 250 μ m.

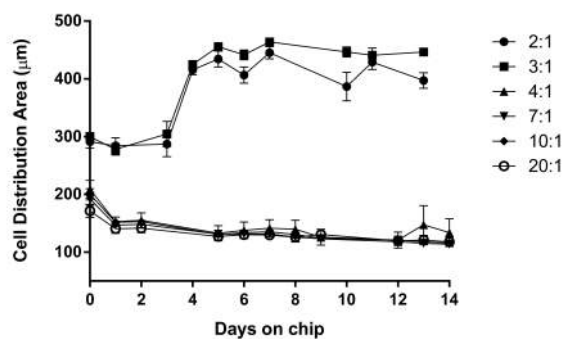


Fig. 6 S6: Graph showing the different ratio of PLETcs and PCs tested on chip over a time period of 2 weeks.