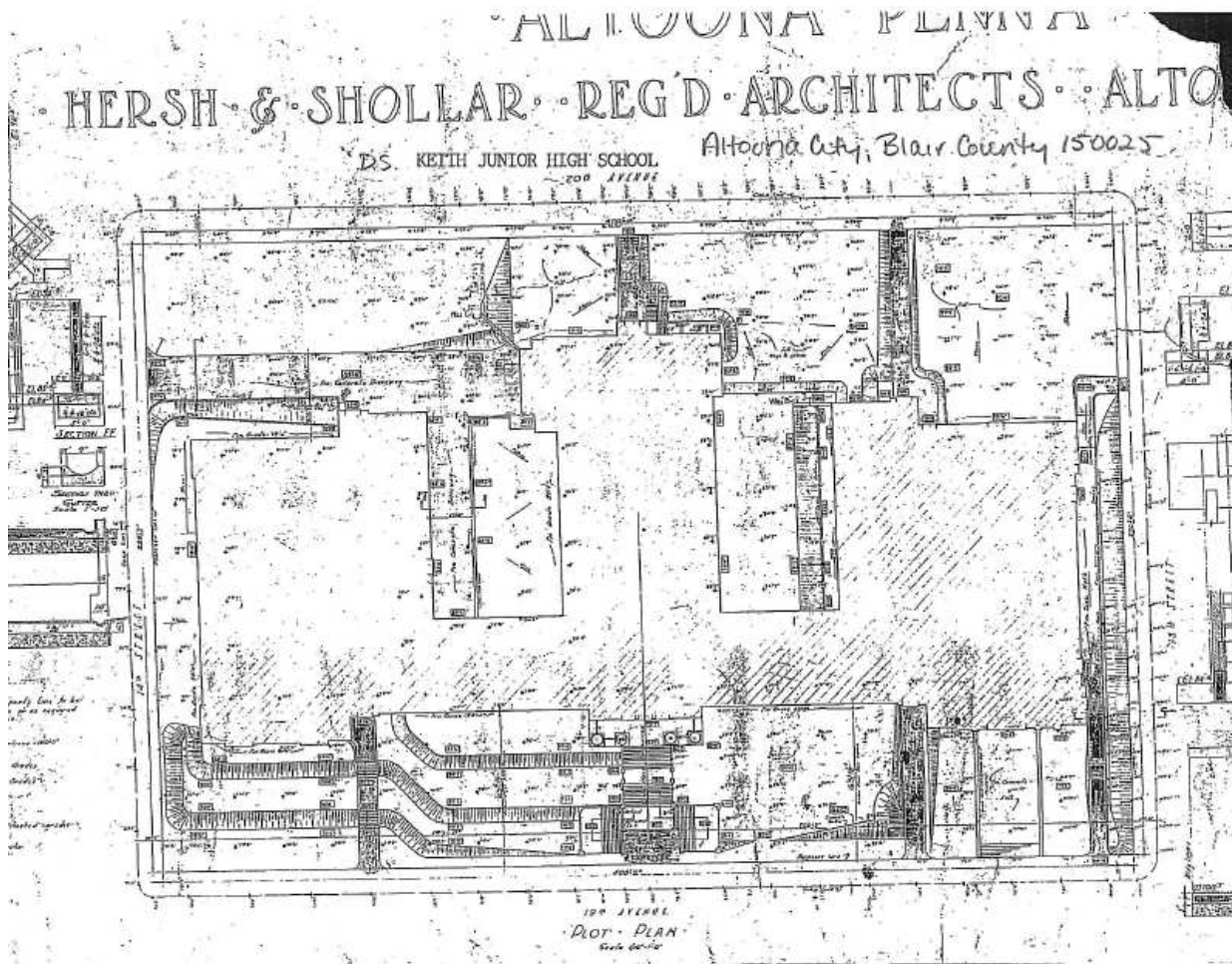


# 150025 – D. S. Keith Junior High School

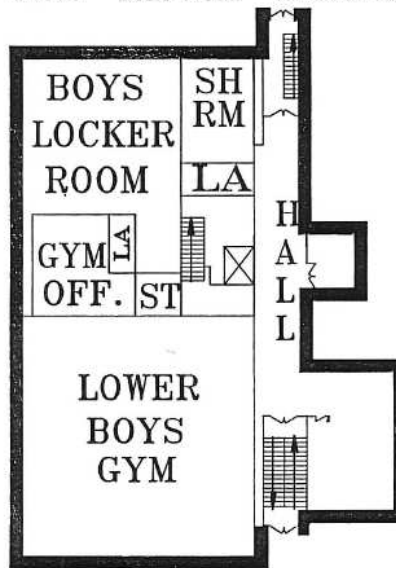




*Site Plan of D. S. Keith Junior High*

**D.S. KEITH JR. HIGH SCHOOL**

Altoona City,  
Blair County  
150025



**SUB BASEMENT**

*Floor Plan of D. S. Keith Junior High*

150025; D.S. Keith Junior High School. This school is located at 1318 19<sup>th</sup> Avenue, Altoona, Pennsylvania, in the City of Altoona, Blair County. It is part of the Altoona Area School District. The 1930 school is centrally located on a city block bounded by 19<sup>th</sup> and 20<sup>th</sup> Avenues and 13<sup>th</sup> and 14<sup>th</sup> Streets. The lot is edged by wide concrete sidewalks. The building is set above the surrounding community on a slope. A narrow terraced lawn with mature trees and bushes, and concrete walkways separate the school's southeast, front, façade from the sidewalk and 19<sup>th</sup> Avenue roadway. Northeast of the school, along 13<sup>th</sup> Street, is a narrow strip of grass and concrete walkway, separated from the sidewalk above by a retaining wall. A small paved parking lot at the north corner of the property replaced a lawn. Small lawns with mature trees and shrubs and a small paved parking lot are located on the northwestern side of the school. Situated within the two open areas between the three legs of the school building are a landscaped garden courtyard and a small paved parking area. Another small parking lot is located at the western corner of the property. A paved strip of parking separates the southwest side of the school from the sidewalk. Off-site parking is located on a separate lot at the north corner of 13<sup>th</sup> Street and 20<sup>th</sup> Avenue. A ca. 1949 athletic field associated with the school is located well off-site, at the southern corner of 13<sup>th</sup> Street and 28<sup>th</sup> Avenue. The off-site area contains a football field and track facilities.

The 1930 Classical Revival school building is arranged in an E-plan with the "spine" of the E forming the front of the building. An athletic wing with two gymnasiums, as well as a cafeteria, is located at the southwest end of the building. A music wing with an auditorium is located at the northeast end of the school. A library is located in the center wing. Classrooms are located mainly along linear hallways along the front "spine" and interior linear hallways in the center wing. The three-story school also includes a basement and a partial sub-basement. The Flemish-bond brick structure sits on a stone foundation. The building features numerous decorative details including molded cast stone denticulated cornices, medallions, panels with swags, pilasters, and elaborate main and auditorium entrances. The flat roof is covered with rubber membrane. The roof features a parapet. The building has an interior brick chimney. The main entrance, centered on the southeast façade, contains three sets of metal-frame glass double doors with arched transoms (replaced in 1980) sheltered by a three-story pedimented portico with Classical elements. The portico and the multi-tiered walled sets of stairs accessing the entrance were re-built ca. 1978. The walkway accessing the auditorium entrances was also re-built at that time. The building is lit by sliding windows installed in 1980. Sections of each window bay were closed with solid panels.

The main entrance accesses a wide staircase leading to a lobby on the first floor. The entryway features a stone tile floor with granite borders, plaster walls with granite panels set between granite chair rails and baseboards, a plaster ceiling with crown molding, and fluorescent lights. Water fountains in the hallways feature decorative tile backsplashes. Classroom doors are pane-and-panel. A vault is located in the office. The girls gymnasium, accessed on the first floor, features brick and plaster walls, wood floors, wall-mounted basketball hoops, acoustic ceiling tiles, and hanging light fixtures. The boys gymnasium, accessed at the sub-basement level, features a concrete balcony

of bleachers. The auditorium features concrete floors with carpeted aisles, wood seats, concrete block walls, a plaster ceiling with decorative crown molding, hanging light fixtures, a proscenium stage, and a balcony. The cafeteria has linoleum floor tiles, plaster walls, acoustic ceiling tile, and fluorescent lights. The library features carpeting, a dropped ceiling with acoustic tiles, and fluorescent lights. A music room features tiered levels. Specialized classrooms include, or have included, traditional shops, a music room, a mechanical drawing classroom, family and consumer science classrooms, special education, and technology labs (converted from shops).

D.S. Keith Junior High School was constructed in 1930 by the Altoona School District to supplement the Roosevelt Junior High School opened in Altoona City just six years before. In 1926 this site on the west side of the city was chosen for the new school building. Designed by the architectural firm of Hersh and Shollar, the school was named for David S. Keith, the second and longest-in-office superintendent of the Altoona School District. An athletic field associated with the school was constructed off-site ca. 1949. Renovations in 1972 included the installation of dropped ceilings, new heating, electrical, and lighting systems, and new carpeting in large instructional spaces. Renovation of the main portico and access stairs, and a new electrical system in the auditorium occurred ca. 1978. Windows were replaced in 1980. Both D.S. Keith and Roosevelt Junior High Schools will be replaced ca. 2008 with a single junior high school currently being constructed. It is anticipated that D.S. Keith Junior High School will be sold to a developer who plans to convert the building into luxury apartments.

#### Anonymous

n.d. *The History and Facts of the School on the Hill; D.S. Keith Junior High School*. Select pages provided by D.S. Keith Junior High School.

#### United States Department of Agriculture

1938 Aerial Photograph AQH-90-79. Created on December 16, 1938. On file at the Pennsylvania State Archives, Record Group 31, Records of the Department of Commerce, State Planning Board Collection.

#### United States Geological Survey

1993 *Altoona SE, PA Aerial Photograph*. USGS Reference Number 40078-E4-03-PHT. Created on April 8, 1993.

1998 *Altoona, PA Quadrangle*. 7.5 minute series. Topography compiled 1962. Planimetry derived from imagery taken 1988 and other sources. Photoinspected using imagery dated 1993. Survey control current as of 1963. Boundaries, other than corporate, revised 1998. Denver, CO.



*Aerial View of D. S. Keith Junior High*

More Photos of D. S. Keith Junior High School

