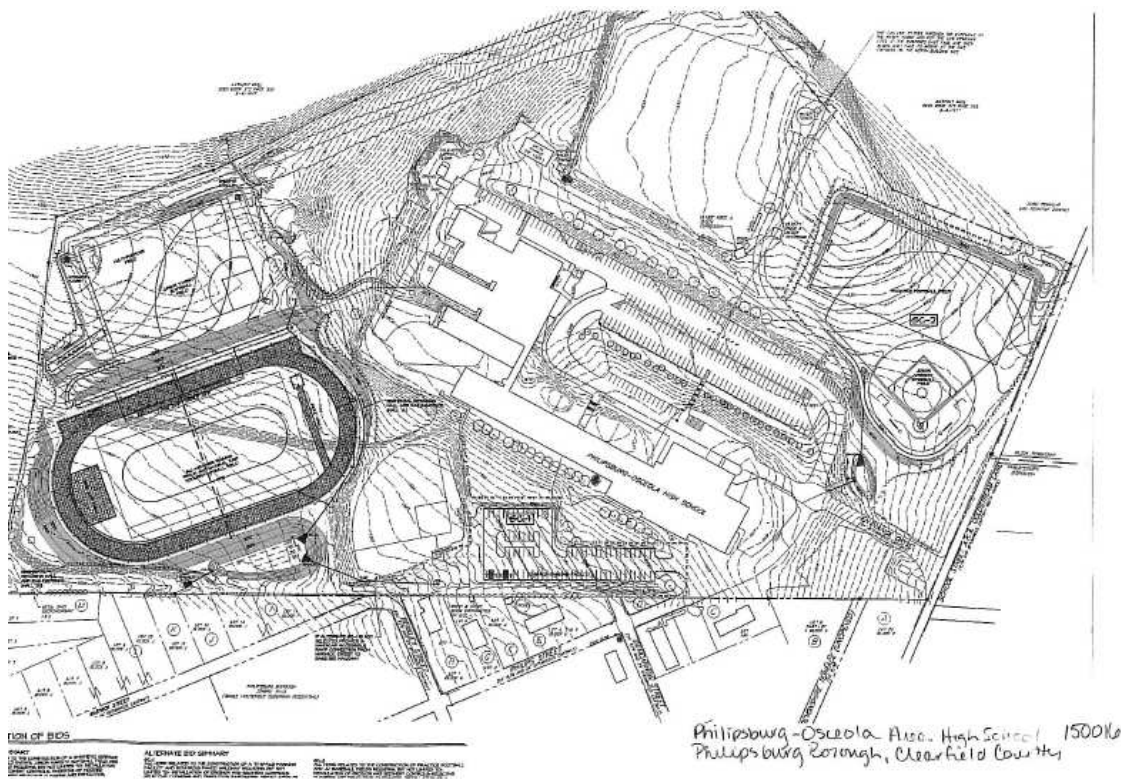
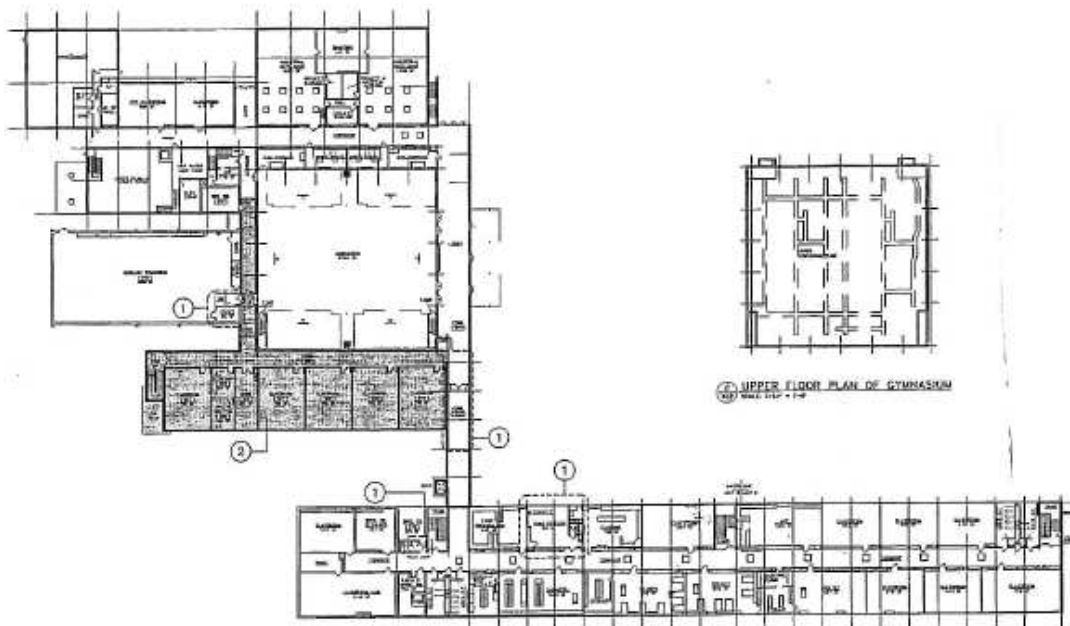


150016 – Philipsburg-Osceola High School





Site Plan of Philipsburg-Osceola Senior High



Philipsburg-Osceola Area High School
 Philipsburg Borough, Clearfield County
 150016

Floor Plan of Philipsburg-Osceola Senior High School

150016; Philipsburg-Osceola Area High School. This school is located at 502 Philips Street, Philipsburg, Pennsylvania in Philipsburg Borough, Centre County. It is part of the Philipsburg-Osceola Area School District. The 1955 school building is centrally located on a large hilly property at the end of Philips Street, at the edge of a residential neighborhood of the borough. A new main entry drive accesses the property off of School Street (Coldstream Lane). Paved driveways from both roadways access two large paved parking areas. One lot is located on the west side of the school. A larger two-tiered lot is located on the east side of the school with a circular driveway. Between the two tiers is a sloping lawn with a set of stairs and scattered trees. A large baseball field with dugouts, concession stand, and bathrooms, is located east of the school and large parking lot. New sports fields (football practice and baseball fields) are located south of the original baseball field. Additional new sports fields northwest of the school building include a football, track, and soccer fields, and softball fields. Some of these new fields were unfinished at the time of the survey. The property features bleachers, a retaining wall, scattered trees and bushes, and several large modern maintenance sheds.

The 1955 L-plan school building is arranged in two wings. The main wing has an interior linear hallway flanked on both sides by classrooms and offices. A library, cafeteria, auditorium, and associated music rooms are located at the southern end of this wing. The library and cafeteria were widened in 1998. A two-story enclosed hallway connects the main wing of the building to the short leg, or wing, of the L. The hallway then partly runs along the outside edge of the wing, which is more rectangular in form than linear. The short wing primarily contains a gymnasium and associated spaces. Also located in this wing are industrial shops and an art room. An auxiliary gymnasium was constructed at the northern end of the original gymnasium between 1968 and 1993. A two-story addition containing a weight room and classrooms was appended to the western side of the gymnasium in 2001. The one-to-two-story building is a steel structure with brick and porcelain enameled steel curtain walls. It sits on a concrete foundation. Rubber membrane covers the flat roof of most of the building. Built-up tar covers the roof of the auditorium. The roof of the gymnasium is rounded. The school has a brick interior chimney. The main entrance, replaced in 1998, contains a pair of metal-frame glass double doors surrounded by fixed windows. A flat-roof steel portico shelters the entrance, then extends to the sidewalk in front of the school structure, and continues around to shelter entrances to the auditorium lobby located south of the main entryway. Picture and hopper windows installed in 1998 light the building. Some windows were replaced with insulated solid panels.

The entryway of the school features a terrazzo tile floor, "popcorn" material on the ceiling, and fluorescent lighting. The auditorium features partially tiled cement floors, "popcorn" material on the walls, "high-hat" lights, upholstered seating, and a proscenium stage. The cafeteria features tile floors, dropped ceiling with acoustic tiles, fluorescent lights, painted concrete-block walls, and skylights. The gymnasium features wood floors, painted concrete-block walls, suspended

basketball hoops, acoustic ceiling tiles, fluorescent lights, and plastic and metal roll-away bleachers. The library features carpeting, concrete-block walls, dropped ceiling with acoustic ceiling tiles and suspended fluorescent lights. Specialized classrooms include, or have included, a music room, art classrooms, industrial art shops, home economics classrooms, and specialized science classrooms.

Philipsburg-Osceola Area High School was the second high school built in Philipsburg. A previous high school had been constructed in 1930. In 1950, the Philipsburg school system joined seven other area school systems and, in 1954, merged with the Osceola Mills School District to form the Philipsburg-Osceola Area School District. This new high school was built shortly thereafter, in 1955, for an expanded school-age population. An auxiliary gymnasium was constructed between 1968 and 1993. Alterations to the school in 1998 include expansion of the library and cafeteria and replacement of windows and doors. In 2001 an addition of classrooms and a weight room was constructed. Landscape changes, including the construction of new sports fields, were on-going in 2006.

Kerstetter, Rich

n.d. *An Education about Education*. Centre Daily Newspaper article provided by the school.

United States Department of Agriculture

1968 Aerial Photograph APP-2JJ-11. Created on August 21, 1968. On file at the Pennsylvania Geological Survey Library, Middletown, Pennsylvania.

United States Geological Survey

1993 *Philipsburg SW, PA Aerial Photograph*. USGS Reference Number 40078-H2-04-PHT. Created on April 18, 1993.

1997 *Philipsburg, PA Quadrangle*. Topography compiled 1957. Planimetry derived from imagery taken 1988. Photoinspected using imagery dated 1994. Survey control current as of 1959. Boundaries, other than corporate, revised 1997. Denver, CO.



Aerial View of Philipsburg-Osceola Senior High

More Photos of Philipsburg-Osceola Senior High School

