

Systemic SARS-CoV-2-specific antibody responses to infection and to COVID-19 and BCG vaccination

Authors:

Juana Claus MSc¹ (<https://orcid.org/0000-0002-2258-3900>)
Thijs ten Doesschate PhD^{1,2} (<https://orcid.org/0000-0002-2965-9998>)
Esther Taks MD³
Priya Debisarun MD³ (<https://orcid.org/0000-0003-3171-3903>)
Gaby Smits MSc⁴
Rob van Binnendijk PhD⁴ (<https://orcid.org/0000-0002-5808-1443>)
Fiona van der Klis PhD⁴ (<https://orcid.org/0000-0002-6759-3539>)
Lilly M. Verhagen PhD^{5,6} (<https://orcid.org/0000-0002-3451-9201>)
Marien I. de Jonge PhD⁶ (<https://orcid.org/0000-0003-2812-5895>)
Marc J.M. Bonten PhD¹ (<https://orcid.org/0000-0002-9095-9201>)
Mihai G. Netea PhD^{3,7} (<https://orcid.org/0000-0003-2421-6052>)
Janneke H. H. M. van de Wijgert PhD^{1,4*} (<https://orcid.org/0000-0003-2728-4560>), corresponding author

Affiliations:

1. Julius Center for Health Sciences and Primary Care, University Medical Center Utrecht, Utrecht University, Utrecht, Netherlands
2. Current affiliation: Department of Internal Medicine, Jeroen Bosch Ziekenhuis, 's Hertogenbosch, Netherlands
3. Department of Medicine and Radboud Center for Infectious Diseases, Radboud University Medical Center, Nijmegen, the Netherlands
4. National Institute of Public Health and the Environment, Bilthoven, Netherlands
5. Department of Paediatric Infectious Diseases and Immunology, Amalia Children's Hospital, Radboud University Medical Center, Nijmegen, Netherlands
6. Department of Laboratory Medicine, Laboratory of Medical Immunology, Radboud Center for Infectious Diseases, Radboud University Medical Center, Nijmegen, Netherlands
7. Department for Genomics & Immunoregulation, Life and Medical Sciences Institute, University of Bonn, Germany

*Corresponding Author:

Janneke van de Wijgert
Julius Center for Health Sciences and Primary Care
University Medical Center Utrecht
Universiteitsweg 100, 3584 CG Utrecht
Email: j.h.h.vandewijgert@umcutrecht.nl

Keywords: SARS-CoV-2, COVID-19, serology, infection, vaccination, BCG

Word counts:

Abstract/Summary: 196
Main text: 4017
References: 40
Number of tables and figures: 5
Supplements: 1

1 **Summary**

2 SARS-CoV-2 infections elicit antibodies against the viral spike (S) and nucleocapsid (N) proteins;
3 COVID-19 vaccines against the S-protein only. The BCG-Corona trial, initiated in March 2020 in SARS-
4 CoV-2-naïve Dutch healthcare workers, captured several epidemic peaks and the introduction of
5 COVID-19 vaccines during the one-year follow-up. We assessed determinants of systemic anti-S1 and
6 anti-N immunoglobulin type G (IgG) responses using trial data. Participants were randomized to BCG
7 or placebo vaccination, reported daily symptoms, SARS-CoV-2 test results, and COVID-19
8 vaccinations, and donated blood for SARS-CoV-2 serology at two time points. In the 970 participants,
9 anti-S1 geometric mean antibody concentrations (GMCs) were much higher than anti-N GMCs. Anti-
10 S1 GMCs significantly increased with increasing number of immune events (SARS-CoV-2 infection or
11 COVID-19 vaccination): 104.7 international units (IU)/ml, 955.0 IU/ml, and 2290.9 IU/ml for one, two,
12 and three immune events, respectively ($p < 0.001$). In adjusted multivariable linear regression models,
13 anti-S1 and anti-N \log_{10} concentrations were significantly associated with infection severity, and anti-
14 S1 \log_{10} concentration with COVID-19 vaccine type/dose. In univariable models, anti-N \log_{10}
15 concentration was also significantly associated with acute infection duration, and severity and
16 duration of individual symptoms. Antibody concentrations were not associated with Long COVID or
17 long-term loss of smell/taste.

18 Introduction

19 The systemic humoral immune response to SARS-CoV-2 is characterized by antigen-specific
20 antibodies, which play a crucial role in host defence and protection against re-infection. Following an
21 infection, systemic immunoglobulins type G (IgG) specific to SARS-CoV-2, including antibodies against
22 the viral spike (S) and nucleocapsid (N) proteins, are detected in the majority of patients within two
23 weeks, with peak concentrations at around three weeks after symptom onset [1–3]. While natural
24 infection typically gives rise to both anti-S and anti-N antibodies, the COVID-19 vaccines that were
25 authorized in the European Union within the first two years of the epidemic (mRNA [4, 5] and viral
26 vector vaccines[6, 7]) were engineered to elicit an anti-S immune response only [3]. The presence of
27 anti-S antibodies is a more sensitive and specific marker for the presence of a SARS-CoV-2 infection
28 than the presence of anti-N antibodies[8], with a reported sensitivity of 91.3-97.1% (depending on
29 infection severity) and specificity of 98.1% [9]. Anti-N sensitivities are estimated to be 85% for mild
30 infections and 67% for asymptomatic infections, and specificity 97% (96%-98%) [10].

31

32 The S-protein, containing the S1 subunit with the receptor binding domain, is abundant and readily
33 accessible on the viral surface. Conversely, the N-protein resides within the core of the viral structure
34 and is less exposed to the host immune system [3]. Furthermore, the N-protein is highly conserved
35 among the different coronaviruses, including some common cold-causing coronaviruses that
36 circulate widely, and existing immunity to anti-N is therefore present in most populations [11, 12].
37 However, anti-N is the only biomarker currently available to detect recent natural infections in a
38 vaccinated population [10].

39

40 Studies have suggested that antibody concentrations over time likely vary by numbers, types, and
41 combinations of immune events (SARS-CoV-2 infections or COVID-19 vaccinations), disease severity,
42 and other virus, host, and vaccine characteristics [13–16]. However, asymptomatic and very mild
43 cases in relatively healthy hosts were underrepresented in studies thus far, with most research

44 focused on the broad WHO-defined mild, moderate, and severe infections [17]. We therefore used
45 data from our previously published BCG-Corona trial in healthy healthcare workers [18, 19] to assess
46 systemic anti-S1 IgG and anti-N IgG responses at the end of the first year of the SARS-CoV-2 epidemic
47 in the Netherlands. Previous BCG-Corona trial analyses found that baseline BCG vaccination did not
48 reduce SARS-CoV-2 infection incidence, duration, or severity, nor SARS-CoV-2 antibody responses, in
49 the first year after vaccination [19]. In this paper, our aim was to assess whether numbers, types, and
50 combinations of immune events, SARS-CoV-2 infection severity and duration, and participant
51 characteristics (including having received BCG or placebo vaccination at baseline) were associated
52 with systemic SARS-CoV-2-specific antibody concentrations after one year of follow-up. The strengths
53 of these analyses include coverage of the first year of the epidemic when participants were still
54 immunologically naïve for SARS-CoV-2 and the completeness of the dataset. BCG-Corona study
55 participants reported symptoms daily, and positive SARS-CoV-2 test results, healthcare seeking
56 behaviour, and vaccinations weekly, and donated blood samples for serology twice in one year. This
57 comprehensive data enabled us to characterize infections, including asymptomatic and very mild
58 infections, in great detail.

59

60 **Methods**

61 *Study design and participants*

62 The BCG-Corona trial was a multi-centre, double-blind, placebo-controlled randomized trial. The study
63 protocol was approved by the institutional review board of the University Medical Center Utrecht, the
64 Netherlands, and, registered at clinicaltrials.gov (identifier: NCT04328441).[20] The trial protocol and
65 primary results of the trial have been published [18, 19]. Healthcare workers from nine Dutch hospitals
66 who were expected to be in direct contact with COVID-19 patients were vaccinated with BCG or
67 placebo vaccine (1:1) during the first SARS-CoV-2 epidemic wave in March/April 2020 and followed up
68 for about one year. The participating study sites were categorized into core hospitals (N=3) that
69 implemented on-site venepuncture sampling, and other hospitals (N=6) that implemented at-home

70 fingerprick sampling (full eligibility criteria and sampling procedures in Supplementary Material,
71 available on the Cambridge Core website).

72

73 *Data collection and seroconversion periods*

74 Participants were invited to donate a blood sample at two time points during follow-up. This divided
75 the follow-up time into two potential seroconversion periods. The first seroconversion period started
76 on the date of randomisation until the date of the first sampling round, about three months (M3)
77 following BCG/placebo vaccination for the core hospitals and about six months (M6) for the other
78 hospitals. The second seroconversion period was between the first sampling round and the second
79 sampling round, approximately 12 months (M12) after BCG/placebo vaccination for all hospitals.

80 Total follow-up time for each participant was the number of days between randomisation and the
81 date of M12 sampling. Baseline characteristics were entered into an online questionnaire by study
82 staff at the time of randomisation (Research Online, Julius Center, UMC Utrecht, the Netherlands).

83 Participants were instructed to report daily symptoms including their severity using a smartphone
84 diary application (Research Follow App, Your Research BV, Huizen, Netherlands) as well as the dates
85 and results of any SARS-CoV-2 test, any other healthcare seeking behaviour, and any vaccination
86 (Supplementary Methods).

87

88 *COVID-19 vaccinations*

89 COVID-19 vaccine roll-out in the Netherlands began on 6 January 2021, and the diary app was
90 updated with weekly questions about the date(s) and types of COVID-19 vaccinations at this time.

91 The COVID-19 vaccines available during the study period were the mRNA vaccines Spikevax
92 (Moderna Biotech, Cambridge, MA, USA) and Comirnaty (Pfizer/BioNTech, New York, NY, USA), and
93 the vector vaccines Vaxzevria (AstraZeneca AB, Sodertalje, Sweden) and Jcovden (Janssen Vaccines,
94 Leiden, Netherlands). By the time the M12 blood sampling was completed in June 2021, healthcare
95 workers could have received zero, one or two doses of only one vaccine type.

96

97 *Antibody measurements*

98 All systemic antibody testing was conducted by the Center for Immunology of Infections and
99 Vaccines at the National Institute for Public Health and the Environment in Bilthoven, the
100 Netherlands. In the first seroconversion period, prior to the start of the COVID-19 vaccination
101 campaign, only anti-S1 IgG antibodies were assessed. At M12, both anti-S1 and anti-N IgG antibodies
102 were assessed to enable differentiation between natural infections and vaccine-induced antibodies.
103 Anti-S1 and anti-N concentrations were measured using an in-house magnetic immunoassay on a
104 Luminex platform, with reported sensitivities of 91.3-97.1% and 67-85% (depending on infection
105 severity) for anti-S1 and anti-N respectively, and specificities of 98.1% and 97%, respectively [9, 10].
106 Anti-S1 and anti-N concentrations were measured simultaneously if applicable. The concentrations
107 were subsequently calibrated against the international standard for human anti-SARS-CoV-2
108 immunoglobulin (20/136 NIBSC standard [21]) and expressed as international units per mL
109 (IU/mL)[10, 22]. The threshold for seropositivity was set to 10.1 IU/mL for anti-S1 and 14.3 IU/mL for
110 anti-N. Samples that were below these thresholds were considered to have concentrations of zero.
111 The anti-S1 and anti-N concentrations displayed gamma distributions and were \log_{10} transformed
112 after adding a pseudocount of +1 to each value to eliminate zero values (Figure S1). We focused the
113 analyses on the M12 antibody concentrations, because most immune events took place between the
114 first (M3/M6) and second (M12) sampling rounds.

115

116 *Definitions of antibody concentration determinants*

117 A single immune event was defined as one SARS-CoV-2 infection episode or one dose of a COVID-19
118 vaccine. An infection episode was defined as a positive test (PCR or rapid antigen test) reported by
119 the participant and/or evidence of seroconversion (for anti-S1 in the first seroconversion period and
120 anti-S1 plus anti-N in the second seroconversion period). We also categorized participants by the
121 vaccination types and doses that they received, and immunity type: natural immunity, vaccine

122 immunity (after one or two doses), or hybrid immunity (a combination of natural infection and one
123 or two vaccine doses).

124

125 To determine infection severity, we matched each infection episode with corresponding self-
126 reported symptoms and healthcare seeking behaviour information (Supplementary Methods). We
127 subsequently categorized each infection episode in accordance with World Health Organisation
128 (WHO) severity categories of asymptomatic, mild, moderate and severe [17]. However, only three
129 BCG-Corona participants were hospitalized (WHO moderate category), and all other symptomatic
130 episodes qualified as WHO mild. We therefore further subdivided the WHO mild category into very
131 mild and mild subcategories (Supplementary Methods): mild episodes were accompanied by more
132 severe respiratory symptoms and/or fever, and lasted longer, compared to very mild episodes. The
133 duration of the acute phase of the infection episode was defined as the number of consecutive days
134 during which the participant reported symptoms, not including standalone loss of smell/taste. Long-
135 term loss of smell/taste and Long COVID (lingering symptoms other than standalone loss of
136 smell/taste) were defined as continuing to report the respective symptoms for at least 60 days after
137 the end of the acute infection episode. Duration of episodes that were ongoing at the end of follow-
138 up were coded as unknown. Chronic symptoms that were reported regularly throughout follow-up
139 were ignored.

140

141 *Statistical analyses*

142 Statistical analyses were performed in R version 4.2.2 (PBC, Boston, MA, USA). Participants were
143 excluded from the analysis population if they did not donate a M12 sample, their infection status was
144 unsure, or their sample was taken in a seroconversion window after infection or vaccination.
145 Infection status was considered unsure if a participant never reported a positive test but had
146 completed less than 80% of diary entries, or had anti-N but no anti-S1 antibodies at M12. The
147 seroconversion window was defined as 14 days, but sensitivity analyses were conducted using 7 and

148 0 days. Participants who were in the seroconversion window for the second dose of a COVID-19
149 vaccine were included as having received only one dose.

150

151 Characteristics between groups were compared using Chi-squared test for categorical variables and
152 Wilcoxon rank sum test for continuous variables. The antilog 10^x of mean concentrations was taken
153 to obtain geometric mean concentrations (GMCs). Mean log₁₀-transformed antibody concentrations
154 between groups were compared using Kruskal-Wallis tests. Associations between covariates (with
155 categorical variables analysed as indicator variables) and log₁₀-transformed anti-S1 and anti-N
156 concentrations at M12 were assessed using linear regression models. BCG versus placebo vaccination
157 at baseline, age, and sex were forced into each multivariable model. Other covariates were
158 considered for inclusion in multivariable models based on statistical significance in univariable linear
159 regression, using $p < 0.05$ as the cut-off value. To avoid multicollinearity, we included combination
160 variables for COVID-19 vaccination (number of doses received plus vaccine product if at least one
161 dose received) and overall infection severity (whether an infection took place and if yes, its overall
162 severity based on both symptom severity and duration), but not number of immune events, overall
163 acute infection episode duration, or severity/duration of individual symptoms.

164

165 **Results**

166 *Participant characteristics*

167 The analysis population consisted of 970 of the 1511 randomized participants (Figure 1). Baseline
168 characteristics were comparable between the two populations, and between the BCG and placebo
169 groups within each population (Table 1A) [19]. The majority of the participants (74.7%) were female,
170 with a mean age of 42.5 years (range 18-67), and had high (60%) to medium risk (24.7%) of work-
171 related SARS-CoV-2 exposure (Supplementary Methods). The prevalence of chronic comorbidities
172 other than hay fever was low. As expected, immune event-related characteristics during follow-up
173 differed between the analysis and randomized populations (Table 1B) because application of the 14-

174 day seroconversion window resulted in the removal of some immune events from the analysis
175 population (Figure S2; Table S1).
176
177 *M12 anti-S1 and anti-N IgG GMCs by immune events*
178 The M12 anti-S1 and anti-N GMCs did not differ between the BCG and placebo groups (Table 2,
179 Figures 2A-B), also not after stratification by number of immune events or immunity type (Figure S3).
180 About half of the participants (517; 53.3%) experienced an immune event during follow up: 187
181 (19.3%) experienced one, 260 (26.8%) two, and 70 (7.2%) three immune events (Table 1B). About
182 two thirds (65.8%) of the participants who experienced one immune event had an infection and
183 34.2% received one dose of a COVID-19 vaccine; 11.5% of the participants who experienced two
184 immune events had an infection plus received one dose of a COVID-19 vaccine, while 88.5% received
185 two doses of a COVID-19 vaccine. All participants with three immune events had an infection plus
186 received two doses of a COVID-19 vaccine. M12 anti-S1 GMCs were higher with increasing number of
187 immune events: 104.7 IU/ml (standard deviation (SD)=7.2) for one, 955.0 IU/ml (SD=4.1) for two, and
188 2290.9 IU/ml (SD=2.6) for three immune events ($p<0.001$; Table 2, Figures 2C+E). The M12 anti-S1
189 GMC was higher after one COVID-19 vaccine dose compared to after one infection: 177.8 IU/ml
190 (SD=7.59) and 79.4 IU/ml (SD=6.61), respectively ($p=0.010$). The M12 anti-N GMC increased after
191 infection but not after vaccination(s) as expected (Table 2, Figures 2D+F), and was lower than the
192 anti-S1 GMC after infection: 26.3 IU/ml (SD=4.5) compared to 79.4 IU/ml (SD=6.6), respectively
193 ($p<0.001$). M12 anti-S1 and anti-N \log_{10} concentrations by time since an immune event showed
194 considerable inter-individual variability but not a general downward trend, suggesting the follow-up
195 period was not long enough for antibody waning (Figure S4).

196

197 *M12 anti-S1 and anti-N IgG GMCs by COVID-19 vaccinations*

198 Of the 394/970 (40.6%) participants who received COVID-19 vaccination during follow-up, 94/970
199 (9.7%) received one dose and 300/970 (30.9%) received two doses. The majority (355/394; 90.1%)

200 received an mRNA vaccine (305 Comirnaty, 49 Spikevax, and one an experimental vaccine by CureVac
201 N.V. in a clinical trial setting), 36/394 (9.1%) received a viral vector vaccine (32 Vaxzevria and 4
202 Jcovden), and for three (0.8%) information on the vaccine type was missing (Table 1B). It should be
203 noted that all participants who received two vaccine doses received mRNA vaccines, while those who
204 received one dose received either a first dose of a mRNA vaccine (58.5%), a first or only dose of a
205 vector vaccine (38.3%), or unknown vaccine type (3.2%). When excluding all participants who
206 experienced an infection, M12 anti-S1 GMCs were significantly higher in participants who had
207 received one dose of a mRNA vaccine (467.7 IU/ml; SD=5.8) compared to one dose of a viral vector
208 vaccine (63.1 IU/ml; SD=5.0; $p<0.001$; Table 2, Figures 2G-I). Two doses of a mRNA vaccine resulted in
209 a higher anti-S1 GMC than one (Table 2). M12 anti-S1 concentrations were higher in the Spikevax
210 compared to the Comirnaty group; 562.3 IU/ml (SD=5.6) and 120.2 IU/ml (SD=4.6) for a single dose of
211 Spikevax and Comirnaty, respectively ($p=0.165$), and 1230.2 IU/ml (SD=2.1) and 794.33 IU/ml
212 (SD=3.5) for two doses of Spikevax and Comirnaty, respectively ($p=0.583$; Table S2). M12 anti-S1
213 GMCs were highest in participants who had an infection and also received one or two COVID-19
214 vaccinations: 3981.07 IU/ml (SD=5.37) and 2290.87 IU/ml (SD=2.63), respectively (Table 2).

215

216 *M12 anti-S1 and anti-N IgG GMCs by SARS-CoV-2 infections*

217 A total of 223 first infections occurred in the analysis population during follow-up: 33 (14.8%) were
218 asymptomatic, 120 (53.8%) very mild, 44 (19.7%) mild, 2 (0.90%) moderate, and 24 (10.8%) of
219 unknown severity. Among those who experienced an infection during follow-up, 30/223 (13.5%)
220 received one COVID-19 vaccine dose and 70/223 (31.4%) received two doses. The M12 anti-S1 GMCs
221 did not statistically significantly differ by overall infection severity when analysed as an ordinal
222 variable ($p=0.566$), and this remained the case after stratifying by the number of COVID-19 vaccine
223 doses received (Table 2, Figures 2J-K). In contrast, the M12 anti-N GMCs significantly increased with
224 increasing overall infection severity: 13.8 IU/ml (SD=3.1) for asymptomatic, 22.9 IU/ml (SD=4.6) for
225 very mild, 44.7 IU/ml (SD=3.3) for mild, and 45.7 IU/ml (SD=25.7) for moderate infections ($p=0.002$;

226 Table 2, Figures 2L-M). The M12 anti-S1 and anti-N GMCs were not associated with increasing acute
227 episode duration, Long COVID or long-term loss of smell/taste (Table 2, Figures S5A-F). M12 anti-S1
228 GMCs were not associated with the severity or duration of specific individual symptoms (analysed as
229 ordinal variables) either. In contrast, M12 anti-N GMCs were higher with higher severity and longer
230 duration of respiratory symptoms excluding dyspnoea, with the presence and duration of fever, and
231 with the severity of non-respiratory symptoms other than fever (Table 2, Figures S5G-T). Of note, the
232 severity and duration of dyspnoea were not associated with either M12 anti-S1 or M12 anti-N GMCs
233 (Table 2, Figure S5G-J).

234

235 The M12 anti-S1 and anti-N GMCs of participant who experienced an infection were correlated at the
236 individual level: participants with a higher M12 anti-S1 GMC also had a higher M12 anti-N GMC
237 (Figure S6). This correlation was most pronounced for those who never received a COVID-19 vaccine
238 during follow-up (Spearman's $\rho=0.69$; $p<0.001$) and weakened in participants who had received one
239 ($\rho=0.54$; $p=0.003$) or two vaccinations ($\rho=0.32$; $p=0.006$) that boosted anti-S1 GMCs only.

240

241 *Linear regression models of M12 anti-S1 and anti-N concentrations*

242 In univariable models including the entire analysis population (N=970), the number of immune
243 events, immune event type, overall infection severity (analysed as an indicator variable), and work-
244 related exposure risk were statistically significantly associated with both M12 anti-S1 and anti-N \log_{10}
245 concentrations (Table S3A). Vaccine doses and types (combined into one variable) were only
246 associated with M12 anti-S1 \log_{10} concentration, while hypertensive medication use and history of
247 pulmonary disease other than asthma and hay fever were only associated with M12 anti-N \log_{10}
248 concentrations. BCG/placebo vaccination at baseline, age, sex, smoking, history of BCG vaccination,
249 influenza vaccination during follow-up, recent respiratory tract infections, and the comorbidities that
250 were not already mentioned were not associated with M12 anti-S1 or anti-N \log_{10} concentrations
251 (Table S3A). In univariable subgroup analyses limited to participants who experienced an infection

252 (n=223), overall infection severity, overall acute episode duration, and specific symptom severity and
253 duration, with the exception of dyspnoea, were significantly associated with M12 anti-N \log_{10}
254 concentrations (all as indicator variables; Table S3B). Long COVID and long-term loss of smell/taste
255 were not associated with M12 anti-S1 or anti-N \log_{10} concentrations in individuals who had
256 experienced an infection.

257

258 The final multivariable models with M12 anti-S1 or anti-N \log_{10} concentrations as the outcomes and
259 BCG/placebo vaccination at baseline, age, and sex forced into the models are shown in Table 3. Age,
260 vaccine type plus dose (indicator variable), and overall infection severity (indicator variable) were
261 statistically significantly associated with M12 anti-S1 \log_{10} concentration. Sex and overall infection
262 severity (indicator variable) were associated with M12 anti-N \log_{10} concentration. Current use of
263 hypertensive medication was associated with M12 anti-N \log_{10} concentration in univariable analysis
264 but was no longer significant in the multivariable model. Sensitivity analyses adding more covariates
265 (Figure S7), or reducing the seroconversion windows to 7 and 0 days (Table S4), produced similar
266 results with two exceptions. The positive associations between M12 anti-S1 \log_{10} concentration and
267 mild or moderate infection severity (compared to no infection) and having received one dose of a
268 mRNA or vector vaccine (compared to no vaccination) changed in magnitude, but remained
269 statistically significant, when the seroconversion period was reduced to 7 or 0 days (Table S4;
270 Supplementary Results).

271

272 Discussion

273 SARS-CoV-2 anti-S1 and anti-N GMCs approximately one year after the start of the Dutch SARS-CoV-2
274 epidemic were associated with the number of immune events, and overall infection severity when an
275 infection took place, but not with having had or having Long COVID or long-term loss of smell/taste.
276 Anti-S1 GMCs were also associated with COVID-19 vaccination, and anti-N GMCs with specific
277 symptom severity and duration except for dyspnoea. Anti-S1 GMCs were higher after one vaccination

278 than one infection, and after one mRNA than one vector vaccination, and highest after a combination
279 of infection and vaccination(s).

280

281 Our finding of higher anti-S1 GMCs with an increasing number of immune events, and after
282 vaccination with mRNA compared to vector vaccines, is in agreement with the published literature
283 [23–25]. However, published reports for infection versus vaccination are inconsistent [26]. Important
284 variables in that context are the severity and duration of infections, waning antibody concentrations
285 over time, and the timing of boosting events. We were able to investigate the former, but not the
286 latter. We did not detect a downward trend of antibody GMCs by time period between the last
287 immune event and M12 sampling, but we could not evaluate antibody concentrations longitudinally
288 for individual participants due to the low number of immune events in the first seroconversion
289 period. The COVID-19 vaccination campaign in the Netherlands began eight months after the start of
290 the study and SARS-CoV-2 infections took place throughout follow-up. Our finding of higher anti-S1
291 GMC after one vaccination than after one infection could therefore be explained by the timing of
292 immune events and subsequent waning antibody concentrations over time. However, the follow-up
293 time was short with little opportunity for waning, and our findings were robust after applying
294 seroconversion windows of 14, 7 or 0 days. Another potential explanation is lower antigen exposure
295 during a mild infection than after vaccination. Participants with hybrid immunity due to infection plus
296 vaccination(s) had higher anti-S1 GMCs than those with infection or vaccination (one or two doses)
297 immunity only. This is also in agreement with the published literature [25, 27, 28]. Studies have
298 shown that within the hybrid immunity group, concentrations depend on the type(s) of vaccine(s)
299 used, the number of doses, and the severity of the infection [28–30].

300

301 As we had already shown earlier, BCG vaccination administered in the beginning of the study did not
302 influence SARS-CoV-2 specific antibody concentrations approximately one year later. This is in
303 agreement with most other BCG trials conducted during the COVID-19 epidemic failing to

304 demonstrate benefits of BCG vaccination on COVID-19-related endpoints [18, 19, 31–33].
305
306 Overall infection severity was associated with M12 anti-S1 (when analysed as an indicator variable
307 but not as an ordinal variable) and anti-N GMCs (when analysed as an indicator or ordinal variable),
308 and individual symptom severity and durations with M12 anti-N GMCs only. However, the latter
309 associations did show non-statistical trends in the same direction for M12 anti-S1 GMCs. The
310 somewhat inconsistent findings for higher M12 anti-S1 GMCs with increasing infection severity could
311 be explained by the fact that this increase was non-linear, with GMCs starting out higher than anti-N
312 GMCs (likely because the host immune system is highly exposed to the viral S1-protein and less so
313 the N-protein)[3] and reaching a plateau more easily. Several other studies have reported increasing
314 anti-S1 and anti-N antibody concentrations with increasing infection severity [1, 13, 34], but some
315 studies did not find this association [35, 36]. Many of these studies, however, compared WHO-
316 defined mild, moderate and severe infections (with the latter two requiring hospitalisation). Our
317 study was conducted in a generally healthy population below the age of 65, and the detailed and
318 comprehensive diary data allowed us to also include asymptomatic infections and to subdivide the
319 WHO-defined mild category into very mild and mild subcategories. Even within this range of
320 asymptomatic to mild infections differences in impact on antibody responses were measurable.
321
322 Our analyses did not reveal associations between M12 antibody concentrations and having had or
323 having Long COVID or long-term loss of smell/taste, but the analysis population included only 19
324 Long COVID cases. Several other studies reported weaker SARS-CoV-2-specific antibody responses
325 following an infection in Long COVID cases [37–39]. However, one study reported similar anti-S1 and
326 anti-N concentrations between fully recovered and Long COVID patients after infection but aberrant
327 immune responses in Long COVID patients following COVID-19 vaccination [40]. The potential
328 associations between immune responses and development of Long COVID requires further study.
329

330 The main strengths of the study were that we captured the entire first year of the Dutch COVID-19
331 epidemic and had detailed and comprehensive data, allowing us to identify asymptomatic infections
332 and to subdivide WHO mild infections into very mild and mild. A main limitation was that we could
333 not account for antibody waning at the individual participant level, but we think that follow-up time
334 after most immune events was too short for waning to have influenced results significantly. Other
335 limitations include the use of two different blood sampling methods (venepuncture and fingerprick
336 sampling) and the suboptimal sensitivity of the anti-N assay for detecting asymptomatic infections
337 (67%) [9]. We may therefore have missed some asymptomatic infections and overestimated the M12
338 anti-N GMC in the asymptomatic group.

339

340 *Conclusions*

341 Our study confirmed that anti-S1 and anti-N GMCs were associated with overall infection severity,
342 but additionally showed that this was the case even in infections ranging from asymptomatic to mild
343 in an otherwise healthy population. Anti-S1 GMCs were also associated with numbers and types of
344 COVID-19 vaccinations, with the combination of infection and vaccination(s) eliciting the greatest
345 response. Anti-S1 and anti-N GMCs were not associated with having had or having Long COVID or
346 long-term loss of smell/taste.

347 **Acknowledgments**

348 We thank the healthcare workers for their participation, and colleagues in the UMC Utrecht and
349 participating hospitals and laboratories who implemented the BCG-Corona trial during the Dutch
350 COVID-19 epidemic.

351

352 **Financial Support**

353 The original BCG-Corona trial was not externally funded. The additional work included in this
354 publication is part of the project “BCG vaccination to minimize COVID-19 disease severity and
355 duration” with project number 10430 01 201 0026 of the research programme COVID-19 which is
356 financed by the Netherlands Organization for Health Research and Development (ZonMw). MN was
357 also funded by an ERC Advanced Grant (grant number 833247) and Spinoza grant of the Netherlands
358 Organization for Scientific Research (NWO). LV was also funded by a Hypatia Tenure Track grant of
359 the Radboud University Medical Center (Nijmegen). The funders did not have any role in the
360 collection, analysis, and interpretation of data; in the writing of the report; and in the decision to
361 submit the paper for publication.

362

363 **Author contributions**

364 JW, TD, MB and MN designed and obtained funding for the study. TD and JW supervised the clinical
365 data collection, and JW supervised the analyses and paper-writing. GS, RB, and FK conducted the
366 antibody testing and MJ and LV provided additional immunological expertise. JC contributed to the
367 clinical data collection, conducted the analyses, and wrote the first draft of the paper. All authors
368 read and approved the final version. JC and JW have full access to all data and take responsibility for
369 the integrity of the data and the accuracy of the data analyses.

370

371 **Data Availability Statement**

372 Individual participant data that underlie the results reported in this article will be made available
373 after deidentification to investigators whose proposed use of the data has been approved by an
374 independent review committee up to 5 years following publication. The study protocol will be
375 available to anyone during this same time frame. Information regarding submitting proposals and
376 accessing data may be found on <https://dataverse.nl/>.

377

378 **Declaration of Conflicts of Interests**

379 LV reports consulting fees from MSD in the last 36 months (unrelated to the work in this manuscript,
380 payments to institution). MB reports research grants from Janssen Vaccines, Novartis, CureVac, and
381 Merck, Advisory Board memberships of Spherycydes, Pfizer, MSD, Novartis and AstraZeneca, and
382 DSMB membership of Sanofi, in the last 36 months (unrelated to the work in this manuscript,
383 payments to institution). MN is scientific founder and scientific advisory board member of Trained
384 Therapeutix Discovery (TTxD) and scientific founder of Lemba Therapeutics, has obtained research
385 grants from GSK Biologicals, TTxD, and Ono Pharma, and consultancy fees from TTxD. JW reports
386 payments for meeting attendance from the Dutch Ministry of Health and Sports and the Netherlands
387 Organization for Health Research and Development (ZonMw) in the last 36 months (unrelated to the
388 work in this manuscript, payments to institution). All other authors declare no competing interests.

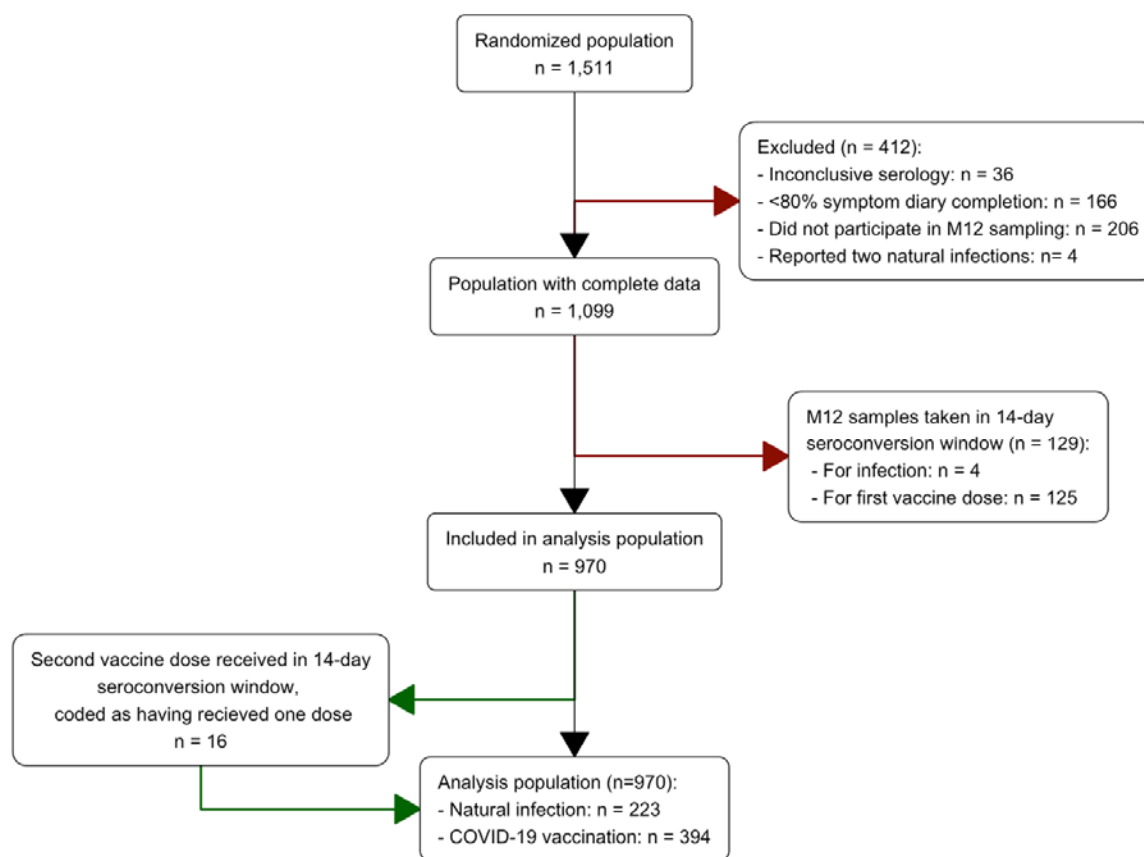
References

1. **Munitz A, et al.** (2021) Rapid seroconversion and persistent functional IgG antibodies in severe COVID-19 patients correlates with an IL-12p70 and IL-33 signature. *Scientific Reports*; **11**:3461
2. **McAndrews KM, et al.** (2020) Heterogeneous antibodies against SARS-CoV-2 spike receptor binding domain and nucleocapsid with implications for COVID-19 immunity. *Journal of Clinical Investigation Insight*; **5**:e142386, 142386
3. **Yang H, Rao Z** (2021) Structural biology of SARS-CoV-2 and implications for therapeutic development. *Nature Reviews Microbiology*; **19**:685–700
4. **Walsh EE, et al.** (2020) Safety and immunogenicity of two RNA-based Covid-19 vaccine candidates. *The New England Journal of Medicine*; **383**:2439–2450
5. **Baden LR, et al.** (2021) Efficacy and safety of the mRNA-1273 SARS-CoV-2 vaccine. *The New England Journal of Medicine*; **384**:403–416
6. **Sadoff J, et al.** (2021) Safety and efficacy of single-dose Ad26.COV2.S vaccine against covid-19. *The New England Journal of Medicine*; **384**:2187–2201
7. **Barrett JR, et al.** (2021) Phase 1/2 trial of SARS-CoV-2 vaccine ChAdOx1 nCoV-19 with a booster dose induces multifunctional antibody responses. *Nature Medicine*; **27**:279–288
8. **Solastie A, et al.** (2021) A highly sensitive and specific SARS-CoV-2 spike- and nucleoprotein-based fluorescent multiplex immunoassay (FMIA) to measure IgG, IgA, and IgM class antibodies. *Microbiology Spectrum*; **9**:e01131-21
9. **den Hartog G, et al.** (2020) SARS-CoV-2–specific antibody detection for seroepidemiology: A multiplex analysis approach accounting for accurate seroprevalence. *The Journal of Infectious Diseases*; **222**:1452–1461
10. **van den Hoogen LL, et al.** (2022) Seropositivity to Nucleoprotein to detect mild and asymptomatic SARS-CoV-2 infections: A complementary tool to detect breakthrough infections after COVID-19 vaccination? *Vaccine*; **40**:2251–2257
11. **Tilocca B, et al.** (2020) Comparative computational analysis of SARS-CoV-2 nucleocapsid protein epitopes in taxonomically related coronaviruses. *Microbes and Infection*; **22**:188–194
12. **Tan Y-J, et al.** (2004) Profiles of antibody responses against severe acute respiratory syndrome coronavirus recombinant proteins and their potential use as diagnostic markers. *Clinical and Diagnostic Laboratory Immunology*; **11**:362–371
13. **Cervia C, et al.** (2021) Systemic and mucosal antibody responses specific to SARS-CoV-2 during mild versus severe COVID-19. *Journal of Allergy and Clinical Immunology*; **147**:545-557.e9
14. **Lou B, et al.** (2020) Serology characteristics of SARS-CoV-2 infection since exposure and post symptom onset. *European Respiratory Journal*; 2000763
15. **Zervou FN et al.** (2021) SARS-CoV-2 antibodies: IgA correlates with severity of disease in early COVID-19 infection. *Journal of Medical Virology*; **93**:5409–5415

16. **Wölfel R, et al.** (2020) Virological assessment of hospitalized patients with COVID-2019. *Nature* **581**:465–469
17. **WHO Working Group on the Clinical Characterisation and Management of COVID-19 infection.** (2020) A minimal common outcome measure set for COVID-19 clinical research. *The Lancet Infectious Diseases*; **20**:e192–e197
18. **Ten Doesschate T, et al.** (2022) Bacillus Calmette-Guérin vaccine to reduce healthcare worker absenteeism in COVID-19 pandemic, a randomized controlled trial. *Clinical Microbiology and Infection*; **28**:1278–1285
19. **Claus J, et al.** (2023) BCG vaccination of health care workers does not reduce SARS-CoV-2 infections nor infection severity or duration: a randomized placebo-controlled trial. *mBio*. <https://doi.org/10.1128/mbio.00356-23>
20. **ten Doesschate T, et al.** (2020) Two Randomized Controlled Trials of Bacillus Calmette-Guérin Vaccination to reduce absenteeism among health care workers and hospital admission by elderly persons during the COVID-19 pandemic: A structured summary of the study protocols for two randomised controlled trials. *Trials*; **21**:481
21. World Health Organization (2020) First WHO international standard for anti-SARS-CoV-2 immunoglobulin (human).
22. **Vos ERA, et al.** (2021) Associations between measures of social distancing and severe acute respiratory syndrome coronavirus 2 seropositivity: A nationwide population-based study in the Netherlands. *Clinical Infectious Diseases: An Official Publication of the Infectious Diseases Society of America*; **73**:2318–2321
23. **van den Hoogen LL, et al.** (2022) SARS-CoV-2 Spike S1-specific IgG kinetic profiles following mRNA or vector-based vaccination in the general Dutch population show distinct kinetics. *Scientific Reports*; **12**:5935
24. **Wei J, et al.** (2021) Antibody responses to SARS-CoV-2 vaccines in 45,965 adults from the general population of the United Kingdom. *Nature Microbiology*; **6**:1140–1149
25. **Eyre DW, et al.** (2021) Quantitative SARS-CoV-2 anti-spike responses to Pfizer–BioNTech and Oxford–AstraZeneca vaccines by previous infection status. *Clinical Microbiology and Infection*; **27**:1516.e7-1516.e14
26. **Pooley N, et al.** (2023) Durability of vaccine-induced and natural immunity against COVID-19: A narrative review. *Infectious Diseases and Therapy*; **12**:367–387
27. **Hall V, et al.** (2022) Protection against SARS-CoV-2 after Covid-19 vaccination and previous infection. *The New England Journal of Medicine*; NEJMoa2118691
28. **Bobrovitz N, et al.** (2023) Protective effectiveness of previous SARS-CoV-2 infection and hybrid immunity against the omicron variant and severe disease: a systematic review and meta-regression. *The Lancet Infectious Diseases*; **23**:556–567
29. **Legros V, et al.** (2021) A longitudinal study of SARS-CoV-2-infected patients reveals a high correlation between neutralizing antibodies and COVID-19 severity. *Cellular and Molecular Immunology*; **18**:318–327

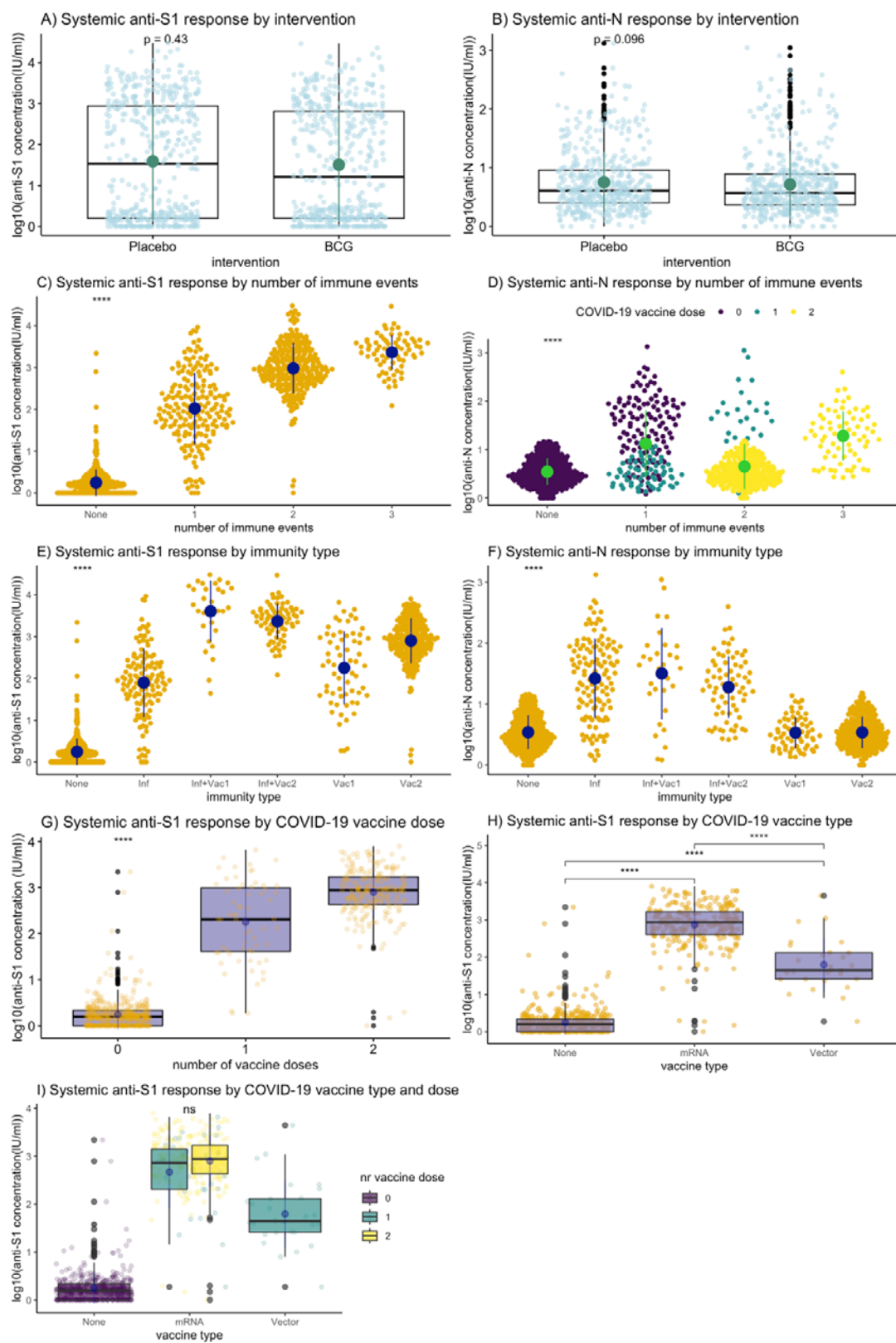
30. **Shrotri M, et al.** (2021) Spike-antibody waning after second dose of BNT162b2 or ChAdOx1. *Lancet*; **398**:385–387
31. **Koekenbier EL, et al.** (2023) Bacillus Calmette-Guérin vaccine for prevention of COVID-19 and other respiratory tract infections in older adults with comorbidities: a randomized controlled trial. *Clinical Microbiology and Infection*; **29**:781–788
32. **Moorlag SJCFM, et al.** (2022) Efficacy of BCG vaccination against respiratory tract infections in older adults during the coronavirus disease 2019 pandemic. *Clinical Infectious Diseases: An Official Publication of the Infectious Diseases Society of America*; **75**:e938–e946
33. **Pittet LF, et al.** (2023) Randomized trial of BCG vaccine to protect against Covid-19 in health care workers. *The New England Journal of Medicine*; **388**:1582–1596
34. **Patil HP, et al.** (2021) Antibody (IgA, IgG, and IgG subtype) responses to SARS-CoV-2 in severe and nonsevere COVID-19 patients. *Viral Immunology*; **34**:201–209
35. **To KK-W, et al.** (2020) Temporal profiles of viral load in posterior oropharyngeal saliva samples and serum antibody responses during infection by SARS-CoV-2: an observational cohort study. *The Lancet Infectious Diseases*; **20**:565–574
36. **Takita M, et al.** (2022) Low SARS-CoV-2 antibody titers may be associated with poor clinical outcomes for patients with severe COVID-19. *Scientific Reports*; **12**:9147
37. **García-Abellán J, et al.** (2021) Antibody response to SARS-CoV-2 is associated with long-term clinical outcome in patients with COVID-19: a longitudinal study. *Journal of Clinical Immunology*; **41**:1490–1501
38. **Cervia C, et al.** (2022) Immunoglobulin signature predicts risk of post-acute COVID-19 syndrome. *Nature Communications*; **13**:446
39. **Augustin M, et al.** (2021) Post-COVID syndrome in non-hospitalised patients with COVID-19: a longitudinal prospective cohort study. *The Lancet Regional Health-Europe*; **6**:100122
40. **Joung S, et al.** (2023) Serological response to vaccination in post-acute sequelae of COVID. *BMC Infectious Diseases*; **23**:97

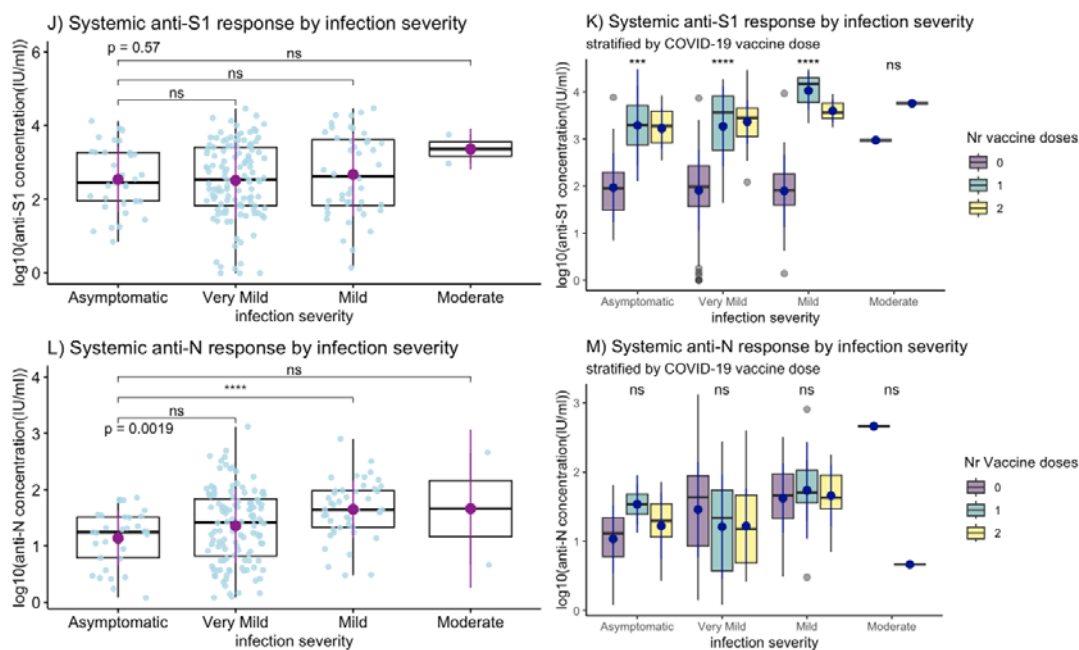
Figure 1: Population and study flow



Participants who did not have evidence of a SARS-CoV-2 infection and less than 80% diary app completion (n=166) were excluded because the probability of having missed infections in that group is high. We also excluded participants with inconclusive serology at M12 (n=36, seroconverted for anti-N but not anti-S1) and those who did not donate a blood sample at M12 (n=206): 114 in the BCG group and 92 in the placebo group (p=0.237). The 4 participants who reported more than one infection during follow-up (two infections in all cases) were excluded because that group was too small to generate meaningful results. In the main analyses, the seroconversion window was considered to be from 14 days before the M12 sampling date until the date of sampling; in sensitivity analyses, we also considered seroconversion windows of 7 and 0 days (Supplementary Methods and Results).

Figure 2: M12 anti-S1 and anti-N log₁₀ concentrations by number and type of immune events





Abbreviations: BCG=Bacillus Calmette-Guérin vaccine; Inf=infection; Inf+Vac1=infection and one dose of a COVID-19 vaccine; Inf+Vac2=infection and two doses of a COVID-19 vaccine; Vac1=one dose of a COVID-19 vaccine; Vac2=two doses of a COVID-19 vaccine. Kruskal-Wallis for overall statistical testing of mean log₁₀ transformed M12 antibody concentrations and Wilcoxon sum rank test for within group.

A-B: Analysis population: denominator N=970. The green point range indicates the mean and standard deviation.

C-F: Analysis population: denominator N=970. The point range shows the mean and standard deviation.

G-I: Participants with an infection were excluded; denominator N=747.

J-M: Only participants with an infection included; denominator N=199; 24/223 participants with unknown severity were excluded. The point range indicates the mean and standard deviation.

Table 1: Participant baseline characteristics and immune events during follow-up

| A. Baseline characteristics Cells contain n (% of N) unless stated otherwise | | Analysis population | | | | Randomised population | |
|---|------------------------|---------------------|---------------|------------------|-------------------|-----------------------|------------------|
| | | Placebo N=480 | BCG N=490 | p ^{1,2} | Overall N=970 | Overall N=1,511 | p ^{1,3} |
| Age in years, mean (SD) | | 43.0 (12.6) | 42.0 (12.6) | 0.208 | 42.5 (12.6) | 42.0 (12.7) | 0.366 |
| Female | | 355 (74.0) | 369 (72.3) | 0.683 | 724 (74.7) | 1122 (74.3) | 0.868 |
| Smoking status | Current | 31 (6.5) | 34 (6.9) | 0.143 | 65 (6.7) | 123 (8.1) | 0.258 |
| | Former | 136 (28.3) | 166 (33.9) | | 302 (31.1) | 436 (28.9) | |
| | Never | 313 (65.2) | 290 (59.2) | | 603 (62.2) | 952 (63.0) | |
| Work-related exposure ⁴ | Low | 72 (15.0) | 76 (15.5) | 0.936 | 148 (15.3) | 213 (14.1) | 0.492 |
| | Medium | 121 (25.2) | 119 (24.3) | | 240 (24.7) | 356 (23.6) | |
| | High | 287 (59.8) | 295 (60.2) | | 582 (60.0) | 942 (62.3) | |
| History of BCG vaccination | | 83 (17.3) | 91 (18.6) | 0.663 | 174 (17.9) | 256 (16.9) | 0.559 |
| Past TB test results ⁵ | Tested negative | 320 (66.7) | 320 (66.7) | 0.135 | 640 (66.0) | 1016 (67.2) | 0.491 |
| | Tested positive | 49 (10.2) | 45 (9.2) | | 94 (9.7) | 136 (9.0) | |
| | Never tested | 109 (22.7) | 115 (23.5) | | 224 (23.1) | 347 (23.0) | |
| | Unknown | 2 (0.4) | 10 (2.0) | | 12 (1.2) | 12 (0.8) | |
| Respiratory infection in winter 2019-2020 | No | 349 (72.7) | 364 (74.3) | 0.310 | 713 (73.5) | 1090 (72.1) | 0.748 |
| | Yes, with fever | 35 (7.3) | 44 (9.0) | | 79 (8.1) | 127 (8.4) | |
| | Yes, without fever | 96 (20.0) | 82 (16.7) | | 178 (18.3) | 294 (19.5) | |
| Influenza vaccination in winter 2020-2021 ⁶ | Yes | 273 (56.9) | 255 (52.0) | 0.239 | 528 (54.4) | 697 (46.1) | <0.001 |
| | No | 142 (29.6) | 169 (34.5) | | 311 (32.1) | 428 (28.3) | |
| | Missing | 65 (13.5) | 66 (13.5) | | 131 (13.5) | 386 (25.5) | |
| | | | | | | | |
| Influenza vaccination prior to follow-up | | 278 (57.9) | 282 (57.6) | 0.960 | 560 (57.7) | 872 (57.7) | 1.000 |
| Any other vaccination in past year ⁷ | | 51 (10.6) | 54 (11.0) | 0.924 | 105 (10.8) | 162 (10.7) | 0.988 |
| Current use of anti-hypertensive medication | | 33 (6.9) | 28 (5.7) | 0.540 | 61 (6.3) | 99 (6.6) | 0.860 |
| History of cardiovascular disease | | 14 (2.9) | 9 (1.8) | 0.371 | 23 (2.4) | 34 (2.3) | 0.953 |
| Current use of anti-diabetic medication | | 2 (0.4) | 3 (0.6) | 1.000 | 5 (0.5) | 9 (0.6) | 1.000 |
| History of asthma | | 35 (7.3) | 34 (6.9) | 0.929 | 69 (7.1) | 101 (6.7) | 0.740 |
| History of hay fever | | 130 (27.1) | 158 (32.2) | 0.091 | 288 (29.7) | 441 (29.2) | 0.823 |
| History of other pulmonary disease | | 12 (2.5) | 11 (2.2) | 0.960 | 23 (2.4) | 32 (2.1) | 0.781 |
| Any lung disease (previous three combine d) | | 154 (32.1) | 175 (35.7) | 0.260 | 329 (33.9) | 497 (32.9) | 0.628 |
| B. Immune events Cells contain n (% of N) unless stated otherwise | | Analysis population | | | | Randomised population | |
| | | Placebo N= 480 | BCG N= 490 | p ^{1,2} | Overall N= 970 | Overall N=1,511 | p ^{1,3} |
| # Immune events ⁸ | 0 | 218 (45.4) | 235 (48.0) | 0.323 | 453 (46.7) | 679 (46.0) | <0.001 |
| | 1 | 93 (19.4) | 94 (19.2) | | 187 (19.3) | 487 (33.0) | |
| | 2 | 127 (26.5) | 133 (27.1) | | 260 (26.8) | 216 (14.6) | |
| | 3 | 42 (8.8) | 28 (5.7) | | 70 (7.2) | 94 (6.4) | |
| Immune event type | None | 218 (45.4) | 235 (48.0) | 0.614 | 453 (46.7) | 680 (45.0) | <0.001 |
| | Infection ⁹ | 62 (12.9) | 61 (12.4) | | 123 (12.7) | 158 (10.5) | |
| | Vaccine 1 dose | 31 (6.5) | 33 (6.7) | | 64 (6.6) | 177 (11.7) | |
| | Vaccine 2 doses | 112 (23.3) | 118 (24.1) | | 230 (23.7) | 320 (21.2) | |
| | Infection + 1 dose | 15 (3.1) | 15 (3.1) | | 30 (3.1) | 54 (3.6) | |
| | Infection + 2 doses | 42 (8.8) | 28 (5.7) | | 70 (7.2) | 86 (5.7) | |
| COVID-19 vaccine product and dose ¹⁰ | None | 280 (58.3) | 296 (60.4) | 0.148 | 576 (59.4) | 868 (57.4) | 0.002 |
| | mRNA 1 dose | 30 (6.2) | 25 (5.1) | | 55 (5.7) | 125 (8.3) | |
| | mRNA 2 doses | 154 (32.1) | 146 (29.8) | | 300 (30.9) | 416 (27.5) | |
| | Vector 1 dose | 13 (2.7) | 23 (4.7) | | 36 (3.7) | 86 (5.7) | |
| | Vector 2 doses | 0 (0.0) | (0.0) | | (0.0) | 7 (0.5) | |
| | Unknown 1 dose | 3 (0.6) | 0 (0.0) | | 3 (0.3) | 9 (0.6) | |
| Had SARS-CoV-2 infection during follow-up ¹¹ | | 119 (24.8) | 104 (21.2) | 0.214 | 223 (21.2) | 298 (19.7) | 0.109 |
| Infection severity ¹² | No infection | 361 (75.2) | 386 (78.8) | 0.727 | 747 (77.0) | 1213 (77.9) | 0.541 |
| | Asymptomatic | 15 (3.1) | 18 (3.7) | | 33 (3.4) | 42 (2.8) | |
| | Very Mild | 65 (13.5) | 55 (11.2) | | 120 (12.4) | 163 (10.8) | |
| | Mild | 25 (5.2) | 19 (3.9) | | 44 (4.5) | 61 (4.0) | |
| | Moderate | 1 (0.2) | 1 (0.2) | | 2 (0.2) | 3 (0.2) | |
| | Unknown | 13 (2.7) | 11 (2.2) | | 24 (2.5) | 29 (1.9) | |
| Acute duration of infection ¹³ | 0 days/no infection | 377 (78.5) | 405 (82.7) | 0.401 | 782 (80.6) | 1251 (82.8) | 0.908 |
| | 0-1 weeks | 20 (4.2) | 9 (1.8) | | 29 (3.0) | 44 (2.9) | |
| | 1-2 weeks | 22 (4.6) | 23 (4.7) | | 45 (4.6) | 61 (4.0) | |
| | 2-3 weeks | 17 (3.5) | 15 (3.1) | | 32 (3.3) | 42 (2.8) | |

| | | | | | | | |
|--------------------------------------|-------------|------------|-----------|-------|------------|------------|-------|
| | 3-4 weeks | 9 (1.9) | 8 (1.6) | | 17 (1.8) | 20 (1.3) | |
| | 4+ weeks | 10 (2.1) | 5 (1.0) | | 15 (1.5) | 18 (1.2) | |
| | Lingering | 10 (2.1) | 12 (2.4) | | 22 (2.3) | 34 (2.3) | |
| | Ongoing/UNK | 15 (3.1) | 13 (2.7) | | 28 (2.9) | 41 (2.7) | |
| Long COVID | No | 106 (89.1) | 87 (83.7) | 0.489 | 193 (86.5) | 256 (85.9) | 0.975 |
| | Yes | 8 (6.7) | 11 (10.6) | | 19 (8.5) | 27 (5.0) | |
| | Unknown | 5 (4.2) | 6 (5.8) | | 11 (4.9) | 15 (9.1) | |
| Long term loss of smell/taste | No | 112 (94.1) | 99 (95.2) | 0.208 | 211 (94.6) | 278 (93.3) | 0.711 |
| | Yes | 5 (4.2) | 1 (1.0) | | 6 (2.7) | 12 (4.0) | |
| | Unknown | 2 (1.7) | 4 (3.8) | | 6 (2.7) | 8 (2.7) | |

Abbreviations: BCG=Bacillus Calmette-Guérin vaccine; M=month; SD=standard deviation; TB=tuberculosis.

1. Chi-squared tests for categorical variables and Wilcoxon rank sum test for continuous variables.
2. Statistical test comparing baseline characteristics between the BCG and placebo group in the analysis population.
3. Statistical test comparing baseline characteristics between the analysis (N=970) and randomised populations (N=1,511).
4. Work related exposure is a combination of participants expected to work in a COVID-19 ward and the percentage of work hours with direct patient contact (Supplementary Methods).
5. Tuberculosis tests include the Mantoux and/or TB QuantiFERON tests. A person who tested positive could have tested positive on either or both tests.
6. Only the missing category is statistically significantly different between the randomised and analysis populations.
7. Includes DTaP-IPV, hepatitis A, hepatitis B, yellow fever, typhoid, rabies, mumps-measles-rubella, meningococcal, pneumococcal, *Haemophilus influenzae* type B, Ebola, tick-borne encephalitis, human papillomavirus, and unknown.
8. An immune event is considered to be either one natural infection or one dose of a COVID-19 vaccine.
9. No-one in the analysis population, and four persons in the randomised population, experienced more than one infection (two each).
10. COVID-19 vaccines available in the Netherlands during the study period are listed in the methods. In addition, one person received an experimental mRNA vaccine by CureVac N.V. in a clinical trial setting. That vaccine was never marketed due to insufficient efficacy, but the person was included in the mRNA vaccines group.
11. A natural infection was defined as a reported positive test (by the participants through the diary app) or identified by serology (evidence of anti-S1 at sampling round 1 or both anti-S1 and anti-N at sampling round 2). None of the participants in the analysis population reported a positive PCR test prior to follow-up at baseline.
12. Participants with an unsure infection status at M12 (never reported a positive test and/or seropositive for anti-N but not anti-S1 at M12; n=36) were considered as never having had an infection during follow-up in the randomised population and were removed from the analysis population.
13. Participants who never had an infection during follow-up are included in the 0 days/no infection category.

Table 2: M12 anti-S1 and anti-N geometric mean concentrations by numbers and types of immune events

| Cells contain mean (SD) | | M12 anti-S1 | | | M12 anti-N | | |
|--|---------------------------------|--------------------------------|--------------------------|----------------|--------------------------------|--------------------------|----------------|
| | | Log ₁₀ conc (IU/ml) | GMC ¹ (IU/ml) | p ² | Log ₁₀ conc (IU/ml) | GMC ¹ (IU/ml) | p ² |
| Overall mean | | 1.55 (1.39) | 35.48 (24.55) | | 0.73 (0.52) | 5.37 (3.31) | |
| Intervention | BCG | 1.51 (1.36) | 32.36 (22.91) | 0.431 | 0.71 (0.53) | 5.13 (3.38) | 0.096 |
| | Placebo | 1.59 (1.41) | 38.90 (25.70) | | 0.75 (0.52) | 5.62 (3.31) | |
| Immune event³ | 0 | 0.25 (0.32) | 1.78 (2.09) | <0.001 | 0.54 (0.28) | 3.47 (1.91) | <0.001 |
| | 1 | 2.02 (0.86) | 104.71 (7.24) | | 1.12 (0.70) | 13.18 (5.01) | |
| | 2 | 2.98 (0.61) | 954.99 (4.07) | | 0.65 (0.47) | 4.47 (2.95) | |
| | 3 | 3.36 (0.42) | 2290.87 (2.63) | | 1.28 (0.51) | 19.05 (3.23) | |
| Immunity type | None | 0.25 (0.32) | 1.78 (2.09) | <0.001 | 0.54 (0.28) | 3.47 (1.91) | <0.001 |
| | Infection only ⁴ | 1.90 (0.82) | 79.43 (6.61) | | 1.42 (0.65) | 26.30 (4.47) | |
| | Vaccine 1 dose | 2.25 (0.88) | 177.83 (7.59) | | 0.53 (0.26) | 3.39 (1.82) | |
| | Vaccine 2 doses | 2.90 (0.54) | 794.33 (3.47) | | 0.54 (0.26) | 3.47 (1.82) | |
| | Infection + 1 dose | 3.60 (0.73) | 3981.07 (5.37) | | 1.50 (0.75) | 31.62 (5.62) | |
| | Infection + 2 doses | 3.36 (0.42) | 2290.87 (2.63) | | 1.28 (0.51) | 19.05 (3.24) | |
| COVID-19 vaccine product and dose⁵ | None | 0.25 (0.32) | 1.78 (2.09) | <0.001 | 0.54 (0.28) | 3.47 (1.91) | 0.956 |
| | mRNA 1 dose | 2.67 (0.76) | 467.73 (5.75) | | 0.56 (0.28) | 3.36 (1.91) | |
| | mRNA 2 doses | 2.90 (0.54) | 794.33 (3.47) | | 0.54 (0.26) | 3.47 (1.82) | |
| | Vector 1 dose | 1.80 (0.70) | 63.10 (5.01) | | 0.51 (0.23) | 3.24 (1.70) | |
| Infection severity⁶ | Asymptomatic | 2.54 (0.90) | 346.74 (7.94) | 0.566 | 1.14 (0.49) | 13.80 (3.09) | 0.002 |
| | Very mild | 2.52 (1.03) | 331.13 (10.72) | | 1.36 (0.66) | 22.91 (4.57) | |
| | Mild | 2.67 (1.13) | 467.73 (13.49) | | 1.65 (0.52) | 44.67 (3.31) | |
| | Moderate | 3.36 (0.56) | 2290.87 (3.63) | | 1.66 (1.41) | 45.71 (25.70) | |
| Acute episode duration⁷ | 0 days/no infection | 2.53 (0.92) | 33.84 (8.32) | 0.755 | 1.13 (0.48) | 13.49 (3.02) | 0.128 |
| | 0-1 weeks | 2.45 (1.11) | 281.84 (12.88) | | 1.37 (0.65) | 23.44 (4.47) | |
| | 1-2 weeks | 2.49 (1.04) | 309.03 (10.96) | | 1.32 (0.64) | 20.89 (4.37) | |
| | 2-3 weeks | 2.80 (0.91) | 630.96 (8.13) | | 1.56 (0.69) | 36.31 (4.90) | |
| | 3-4 weeks | 2.38 (0.97) | 239.88 (9.33) | | 1.37 (0.67) | 23.44 (4.68) | |
| | 4+ weeks | 2.61 (1.28) | 407.38 (19.05) | | 1.57 (0.53) | 37.15 (3.39) | |
| | Lingering | 2.80 (1.07) | 630.96 (11.75) | | 1.49 (0.62) | 30.90 (4.17) | |
| | Ongoing/UNK | 2.63 (1.22) | 426.58 (16.60) | | 1.46 (0.66) | 28.84 (4.57) | |
| | Long COVID^{7,8} | No | 2.59 (1.03) | | 389.05 (10.72) | 0.973 | |
| Yes | | 2.57 (1.25) | 371.54 (17.78) | 1.53 (0.66) | 33.88 (4.57) | | |
| Unknown | | 2.55 (1.07) | 354.81 (11.75) | 1.63 (0.54) | 42.66 (3.47) | | |
| LT loss taste/smell^{7,9} | No | 2.57 (1.04) | 371.54 (10.96) | 0.572 | 1.38 (0.63) | 23.99 (4.27) | 0.541 |
| | Yes | 3.06 (1.11) | 1148.15 (12.88) | | 1.30 (0.49) | 19.95 (3.09) | |
| | Unknown | 2.56 (1.25) | 363.08 (17.78) | | 1.62 (0.74) | 41.69 (5.50) | |
| Dyspnea severity^{10,11} | 0 | 2.57 (1.07) | 371.54 (11.75) | 0.938 | 1.35 (0.61) | 22.39 (4.07) | 0.239 |
| | 1-3 | 2.63 (0.99) | 426.58 (9.77) | | 1.42 (0.68) | 26.30 (4.79) | |
| | 4-5 | 2.55 (0.99) | 354.81 (9.77) | | 1.54 (0.60) | 34.67 (3.98) | |
| Dyspnea duration (days)¹¹ | 0 | 2.59 (1.08) | 389.05 (12.02) | 0.373 | 1.36 (0.62) | 22.91 (4.17) | 0.280 |
| | 1-3 | 2.72 (0.94) | 524.81 (8.71) | | 1.28 (0.58) | 19.05 (3.80) | |
| | 4-7 | 2.32 (0.96) | 208.93 (9.12) | | 1.38 (0.73) | 23.99 (5.37) | |
| | Week+ | 2.84 (0.94) | 691.83 (8.71) | | 1.62 (0.54) | 41.69 (3.47) | |
| Resp symptoms severity^{10,12,13} | 0 | 2.48 (0.97) | 302.00 (9.33) | 0.240 | 1.12 (0.55) | 13.18 (3.55) | 0.003 |
| | 1-3 | 2.42 (1.11) | 263.03 (12.88) | | 1.38 (0.65) | 23.99 (4.47) | |
| | 4-5 | 2.73 (0.97) | 537.03 (9.33) | | 1.54 (0.61) | 34.67 (4.07) | |
| Resp symptoms duration (days)^{12,14} | 0 | 2.46 (0.96) | 288.40 (9.12) | 0.641 | 1.12 (0.55) | 13.18 (3.55) | 0.006 |
| | 1-3 | 2.56 (1.13) | 363.08 (13.49) | | 1.42 (0.62) | 26.30 (4.17) | |
| | 4-7 | 2.37 (1.15) | 234.42 (14.13) | | 1.29 (0.68) | 19.50 (4.79) | |
| | Week+ | 2.65 (1.02) | 446.68 (10.47) | | 1.52 (0.62) | 33.11 (4.17) | |
| Fever^{10,15} | No | 2.57 (1.06) | 371.54 (11.48) | 0.845 | 1.31 (0.61) | 20.42 (4.07) | 0.029 |
| | Yes | 2.60 (1.01) | 398.11 (10.23) | | 1.50 (0.63) | 31.62 (4.27) | |
| Fever duration (days)^{10,15} | 0 | 2.57 (1.06) | 371.54 (11.48) | 0.781 | 1.31 (0.61) | 20.42 (4.07) | 0.024 |
| | 1-3 | 2.63 (1.09) | 426.58 (12.03) | | 1.29 (0.53) | 19.50 (3.39) | |
| | 4-7 | 2.48 (0.93) | 302.00 (8.51) | | 1.51 (0.68) | 32.36 (4.79) | |
| | Week+ | 2.74 (1.07) | 549.54 (11.75) | | 1.69 (0.60) | 48.98 (3.98) | |
| Non-resp symptoms severity^{10,16,17} | 0 | 2.35 (1.07) | 223.87 (11.75) | 0.225 | 1.13 (0.54) | 13.48 (3.47) | 0.002 |
| | 1-3 | 2.73 (0.95) | 537.03 (8.91) | | 1.38 (0.59) | 23.99 (3.89) | |
| | 4-5 | 2.55 (1.05) | 354.81 (11.22) | | 1.50 (0.65) | 31.62 (4.47) | |

Abbreviations: BCG=Bacillus Calmette-Guerin; conc=concentration; GMC=geometric mean concentration; IU=International units; LT=long-term; M=Month; resp=respiratory; SD=standard deviation.

1. Antilog 10^x of the log₁₀ transformed mean concentration.
2. Kruskal-Wallis p-values for comparisons of mean log₁₀-transformed concentrations in IU/ml after adding a pseudo-count of 1.
3. One immune event (N=187): 123 (65.8%) had an infection and 64 (34.2%) received one dose of a COVID-19 vaccine. Two immune events (N=260): 30 (11.5%) had an infection and received one dose of a COVID-19 vaccine, while 230 (88.5%) received two doses of a COVID-19 vaccine. All participants with three immune events (N=70) had an infection and received two COVID-19 vaccine doses. No-one in this dataset experienced more than one infection.
4. Denominator is 747 because participants with infections were excluded as well as an additional participant due to missing vaccine type. The number of COVID-19 vaccine doses was calculated as the total number of doses received by the participant during follow-up regardless of whether the primary vaccination series consisted of one or two doses. The COVID-19 vaccines available during the study period in the Netherlands are listed in the methods.
5. Denominator is 199 because only participants who experienced an infection were included and 24 participants with unknown infection severity were removed. We also performed Jonckheere's tests for trend with an *a priori* ordering of infection severity for mean anti-S1 log₁₀-transformed concentrations (p-value=0.367) and mean anti-N log₁₀-transformed concentrations (p-value<0.001).
6. Denominator is 223 because only participants who experienced an infection were included.
7. Long COVID was defined as continuing to report symptoms other than standalone loss of smell/taste for at least 60 days after the end of the acute infection episode. "Unknown" includes participants who were reporting symptoms past the end of acute infection episode but had not yet reached 60 days at the time the diary app was discontinued. There were 23 cases but 4 were excluded from the analysis population for being in the seroconversion window of the first COVID-19 vaccine dose. Of the remaining 19 cases, 5 had the infection in the first period and 14 in the second period; 8 received at least one COVID-19 vaccine dose in the first period and 11 were never vaccinated.
8. Long-term loss of smell/taste was defined as continuing to report standalone loss of smell/taste for at least 60 days after the end of the acute infection episode. "Unknown" includes participants who were reporting loss of smell/taste past the end of acute infection episode but had not reached 60 days at the time the diary app was discontinued. There were 9 cases but three were excluded from the analysis population for being in the seroconversion window of the first COVID-19 vaccine dose. When excluding the unknown category from the analysis, p=0.290.
9. Symptoms were reported on a scale of 0-5: 0 for not present and 1-5 present with increasing severity. Fever was reported as present or not and was defined as having a temperature above 38°C.
10. Denominator is 218 because only participants who experienced an infection were included and 5 additional participants were removed due to unknown dyspnea severity and/or duration.
11. Respiratory symptoms exclude dyspnoea. Most participants reported more than one type of respiratory symptom during an infection episode; we took the highest severity reported for any respiratory symptom. The duration was calculated from the day on which the first respiratory symptom was reported until the day a respiratory symptom was reported.
12. Denominator is 205 because only participants who experienced an infection were included and 18 additional participants were removed due to unknown respiratory symptom severity.
13. Denominator is 200 because only participants who experienced an infection were included and 23 additional participants were removed due to unknown or ongoing respiratory symptom duration.
14. Denominator is 217 because only participants who experienced an infection were included and 6 additional participants were removed due to unknown presence of fever or unknown fever duration.
15. Non-respiratory symptoms exclude fever. Most participants reported more than one type of non-respiratory symptom during an infection episode; we took the highest severity reported for any non-respiratory symptom. The duration was calculated from the day on which the first non-respiratory symptom was reported until the last day a non-respiratory symptom was reported.
16. Denominator is 205 because only participants who experienced an infection were included and 18 additional participants were removed due to unknown non-respiratory symptom severity.

Table 3: Multivariable models with M12 anti-S1 and anti-N log₁₀ concentrations as outcome

| Covariate | Estimate; (95% CI) | Exp ⁴ (estimate); (95% CI) | p | VIF ⁵ | | |
|---|-------------------------|---------------------------------------|--------------|------------------|--|--|
| | | | | | | |
| Model: M12 Anti-S1^{6,7} | | | | | | |
| Model intercept ¹ | 0.50; (0.36, 0.64) | 3.02; (2.19, 4.17) | <0.001 | | | |
| BCG vs placebo ² | 0.02; (-0.05, 0.09) | 1.05; (0.89, 1.23) | 0.585 | 1.01 | | |
| Age (per year) | -0.004; (-0.01, -0.007) | 0.99; (0.98, 0.99) | 0.008 | 1.04 | | |
| Male sex | -0.04; (-0.12, 0.04) | 0.91; (0.76, 1.10) | 0.311 | 1.01 | | |
| All the below compared to participants who never had an infection or vaccination during follow-up: | | | | | | |
| Asymptomatic | 1.14; (0.95, 1.34) | 14.13; (8.91, 21.88) | <0.001 | 1.01 | | |
| Very mild | 1.19; (1.08, 1.30) | 16.22; (12.59, 20.42) | <0.001 | 1.02 | | |
| Mild | 1.39; (1.22, 1.56) | 25.12; (16.98, 38.02) | <0.001 | 1.02 | | |
| Moderate | 1.89 (1.12, 2.66) | 74.13; (12.30, 446.68) | <0.001 | 1.01 | | |
| Unknown severity | 1.01; (0.78, 1.24) | 10.96; (6.46, 18.62) | <0.001 | 1.02 | | |
| mRNA 1 dose | 2.31; (2.15, 2.46) | 112.20; (47.86, 263.03) | <0.001 | 1.06 | | |
| mRNA 2 doses | 2.40; (2.32, 2.47) | 245.47; (204.17, 295.12) | <0.001 | 1.06 | | |
| Vector 1 dose | 1.49; (1.31, 1.68) | 223.87; (151.36, 331.13) | <0.001 | 1.06 | | |
| Model: M12 Anti-N^{8,9} | | | | | | |
| Model intercept ³ | 0.48; (0.39, 0.57) | 2.95; (2.40, 3.63) | <0.001 | | | |
| BCG vs placebo ² | -0.003; (-0.05, 0.04) | 0.99; (0.89, 1.10) | 0.901 | 1.01 | | |
| Age (per year) | 0.001; (-0.007, 0.003) | 1.00; (0.98, 1.01) | 0.312 | 1.06 | | |
| Male sex | 0.06; (0.005, 0.11) | 1.15; (1.01, 1.29) | 0.040 | 1.01 | | |
| Hypertension med | 0.06; (-0.04, 0.16) | 1.15; (0.91, 1.44) | 0.222 | 1.07 | | |
| All the below compared to participants who never had an infection or vaccination during follow-up: | | | | | | |
| Asymptomatic | 0.60; (0.47, 0.74) | 4.07; (2.95, 5.50) | <0.001 | 1.01 | | |
| Very mild | 0.82; (0.74, 0.89) | 6.61; (5.62, 7.94) | <0.001 | 1.04 | | |
| Mild | 1.11; (1.00, 1.23) | 13.18; (10.0, 16.98) | <0.001 | 1.01 | | |
| Moderate | 1.11; (0.58, 1.63) | 13.48; (4.07, 45.71) | <0.001 | 1.01 | | |
| Unknown severity | 0.86; (0.71, 1.02) | 7.24; (5.13, 10.23) | <0.001 | 1.01 | | |

Abbreviations: BCG=Bacillus Calmette-Guérin vaccine; CI=Confidence Interval; M=month; VIF= Variance of Inflation Factor.

Indicator variables were created, and model building is described in more detail in supplementary methods.

- The reference is an individual in the placebo group, zero years old, who never had a SARS-CoV2 infection and was never vaccinated for COVID-19.
- Baseline BCG or placebo vaccination was forced into the models to take the original randomisation into account. Age and sex were forced into the models because of their well-documented effects on immune responses.
- The reference is a female individual in the placebo group, zero years old, who never experienced a SARS-CoV-2 infection.
- Antilog 10⁴ of the model estimates.
- The VIF values for this model are all less than 5, which means that there was no evidence of multicollinearity.
- The model includes N=967 participants (three participants with unknown vaccine types dropped out of the model).
- Therefore, the linear equation is: $\text{Log}_{10}(\text{anti-S1 concentration M12}) = 0.50 + 0.02 \cdot \text{BCG} + 1.14 \cdot \text{Asymptomatic infection} + 1.19 \cdot \text{Very mild infection} + 1.39 \cdot \text{Mild infection} + 1.89 \cdot \text{Moderate infection} + 1.01 \cdot \text{infection with unknown severity} + 2.31 \cdot \text{One dose of mRNA} + 2.40 \cdot \text{Two doses of mRNA} + 1.49 \cdot \text{One dose of vector} - 0.004 \cdot \text{per year of age} - 0.04 \cdot \text{Male}$.
- The model includes N=970 participants.
- Therefore, the linear equation is: $\text{Log}_{10}(\text{anti-N concentration M12}) = 0.48 - 0.003 \cdot \text{BCG} + 0.60 \cdot \text{Asymptomatic Infection} + 0.82 \cdot \text{Very mild infection} + 1.11 \cdot \text{Mild infection} + 1.11 \cdot \text{Moderate infection} + 0.86 \cdot \text{Infection with unknown severity} + 0.06 \cdot \text{Male} + 0.001 \cdot \text{per year of age} + 0.06 \cdot \text{Use of anti-hypertensive medication}$.