

1

2

3

4 **Sex hormone and metabolic dysregulations are associated with critical**  
5 **illness in male Covid-19 patients**

6

7 Maria Schroeder<sup>1\*</sup>, Berfin Schaumburg<sup>2\*</sup>, Zacharias Müller<sup>2</sup>, Ann Parplys<sup>2</sup>, Dominik Jarczak<sup>1</sup>, Axel  
8 Nierhaus<sup>1</sup>, Andreas Kloetgen<sup>3</sup>, Bettina Schneider<sup>4</sup>, Manuela Peschka<sup>5</sup>, Fabian Stoll<sup>2</sup>, Tian Bai<sup>2</sup>,  
9 Henning Jacobsen<sup>2</sup>, Martin Zickler<sup>2</sup>, Stephanie Stanelle-Bertram<sup>2</sup>, Geraldine de Heer<sup>1</sup>, Thomas  
10 Renné<sup>5</sup>, Andreas Meinhardt<sup>6</sup>, Joerg Heeren<sup>7</sup>, Jens Aberle<sup>8</sup>, Alice C. McHardy<sup>3,9</sup>, Hartmut Schlüter<sup>5</sup>,  
11 Jens Hiller<sup>10</sup>, Sven Peine<sup>10</sup>, Lothar Kreienbrock<sup>4</sup>, Karin Klingel<sup>11</sup>, Stefan Kluge<sup>1§</sup>, Gülsah  
12 Gabriel<sup>2,9,12§</sup>

13

14 <sup>1</sup>Department of Intensive Care Medicine, University Medical Center Hamburg-Eppendorf, Germany; <sup>2</sup>Department for Viral Zoonoses-  
15 One Health, Heinrich Pette Institute, Leibniz Institute for Experimental Virology, Hamburg, Germany; <sup>3</sup>Computational Biology of  
16 Infection Research, Helmholtz Centre for Infection Research, Braunschweig, Germany; <sup>4</sup>Department of Biometry, Epidemiology and  
17 Information Processing, University of Veterinary Medicine Hannover, Germany; <sup>5</sup>Institut für Klinische Chemie und Laboratoriums-  
18 Medizin, University Medical Center Hamburg-Eppendorf, Germany; <sup>6</sup>Institute of Anatomy and Cell Biology, Justus-Liebig  
19 University of Giessen, Germany; <sup>7</sup>Institute for Biochemistry and Molecular Cell Biology, University Medical Center Hamburg-  
20 Eppendorf, Germany; <sup>8</sup>Department of Endocrinology, Diabetology, Obesity and Lipids, University Medical Center Hamburg-  
21 Eppendorf, Germany; <sup>9</sup>German Center for Infection Research (DZIF), Germany; <sup>10</sup>Institute for Transfusion Medicine, University  
22 Medical Center Hamburg-Eppendorf, Germany; <sup>11</sup>Institute for Pathology and Neuropathology, University Hospital Tuebingen,  
23 Germany; <sup>12</sup>Institute for Virology, University for Veterinary Medicine Hannover, Germany;

24

25

26 \*shared first authorship; § shared last authorship

27 correspondence to: [guelsah.gabriel@leibniz-hpi.de](mailto:guelsah.gabriel@leibniz-hpi.de)

28

29 **Summary**

30

31 Males develop more severe SARS-CoV-2 infection related disease outcome than females. Herein,  
32 sex hormones were repeatedly proposed to play an important role in Covid-19 pathophysiology and  
33 immunity. However, it is yet unclear whether sex hormones are associated with Covid-19 outcome in  
34 males and females. In this study, we analyzed sex hormones, cytokine and chemokine responses as  
35 well as performed a large profile analysis of 600 metabolites in critically-ill male and female Covid-  
36 19 patients in comparison to healthy controls and patients with coronary heart diseases as a prime  
37 Covid-19 comorbidity. We here show that dysregulated sex hormones, IFN- $\gamma$  levels and unique  
38 metabolic signatures are associated with critical illness in Covid-19 patients. Both, male and female  
39 Covid-19 patients, present elevated estradiol levels which positively correlates with IFN- $\gamma$  levels.  
40 Male Covid-19 patients additionally display severe testosterone and triglyceride deficiencies as  
41 compared to female patients and healthy controls. Our results suggest that male Covid-19 patients  
42 suffer from multiple metabolic disorders, which may lead to higher risk for fatal outcome. These  
43 findings will help to understand molecular pathways involved in Covid-19 pathophysiology.

## 44 **Introduction**

45

46 The current SARS-CoV-2 pandemic continues taking its toll on human health with currently 1.61  
47 million lives lost worldwide (as of 14<sup>th</sup> December 2020). SARS-CoV-2 was first reported in humans  
48 in December 2019 in Wuhan, China <sup>1</sup>. On February 11<sup>th</sup> 2020, the World Health Organization  
49 (WHO) named the disease caused by SARS-CoV-2, COVID-19 (coronavirus disease 2019). One  
50 month later, on 11<sup>th</sup> March 2020, the WHO declared COVID-19 as a pandemic. The clinical  
51 spectrum of SARS-CoV-2 infection is broad, ranging from mild upper respiratory illnesses to severe  
52 primary pneumonia with respiratory failure, multi-organ failure and death <sup>2</sup>. Retrospective cohort  
53 studies revealed risk factors associated with disease severity and death. A study from Wuhan, China,  
54 which enrolled 191 inpatients on hospital admission since its first occurrence in China in December  
55 2019, reported that older age and comorbidities, such as hypertension, diabetes and coronary heart  
56 diseases being among the top three, present poor prognostic markers at an early stage <sup>2</sup>. Another  
57 study from the UK linked 10,926 COVID-19-related deaths pseudonymously to primary care records  
58 of 17 million individuals, identifying being male, older age, diabetes, asthma, obesity as well as  
59 chronic heart diseases among the comorbidities associated with Covid-19 related death <sup>3</sup>.

60

61 Thus, there is increasing evidence that being male constitutes a major risk factor associated with  
62 SARS-CoV-2 fatality. However, the underlying factors of sex disparity observed in Covid-19 remain  
63 unclear yet. We have recently shown using the golden hamster model, that SARS-CoV-2 infection  
64 attacks the reproductive organs and causes massive dysregulation of sex hormones in infected male  
65 and female animals <sup>4</sup>. In the young and lean golden hamsters without comorbidities, the males had  
66 reduced plasma testosterone levels combined with elevated plasma estradiol levels, unlike females  
67 who showed reduced plasma estradiol levels upon SARS-CoV-2 infection <sup>4</sup>. Thus, we wanted to  
68 study whether the observed dysregulation in sex hormones upon SARS-CoV-2 infection is also  
69 present in Covid-19 patients and poses a risk factor for disease severity.

70

71 Therefore, we herein analyzed sex hormones, cytokine responses and more than 600 metabolites in  
72 critically-ill male and female Covid-19 patients in comparison to healthy controls and patients with  
73 coronary heart diseases as one of the top comorbidities present in Covid-19 patients.

74

75

76

77 **Results**

78

79 **More male patients with Covid-19 required intensive care than women.**

80 A total of  $n=136$  SARS-CoV-2 PCR-positive patients were admitted to the Clinic for Intensive Care  
81 Medicine, at the University Medical Center Hamburg-Eppendorf within the period 9<sup>th</sup> March to 9<sup>th</sup>  
82 December 2020. Of these,  $n=88$  (65%) were male and  $n=48$  (35%) were female. A total of  $n=41$   
83 (30%) patients died, of which  $n=25$  (61%) were male and  $n=16$  (39%) were female (**Figure 1**).

84

85 **Severe Covid-19 in men is associated with reduced androgen and increased estrogen levels.**

86 First, we wanted to assess whether SARS-CoV-2 infection mediated alterations in sex hormone  
87 levels proposed before in an animal model <sup>4</sup> are also observed in Covid-19 patients and pose a risk  
88 factor for severe outcome. Therefore, we recruited male and female Covid-19 patients ( $n=50$ ) who  
89 were admitted to an intensive care unit (**Table 1** and **Table S1**). The median age in Covid-19 patients  
90 was comparable between males (63 years, interquartile range (IQR) 15 years) and females (67 years,  
91 IQR 8.5 years), respectively. All patients presented at least one comorbidity with coronary heart  
92 diseases (CHD), diabetes type II and obesity being among the most frequent (**Table S1**). However,  
93 diabetes type II ( $P=1.0$ ) and obesity ( $P=1.0$ ) showed same frequencies in male and female Covid-19  
94 patients. Albeit statistically not significant ( $P=0.6$ ), more coronary heart diseases (CHD) patients  
95 were present in the male compared to the female Covid-19 cohort, which might reflect extended  
96 frequency of CHD in men <sup>5</sup>. Since obesity and type II diabetes were evenly distributed between male  
97 and female Covid-19 patients, sex hormone analysis might be shifted due to this unbalance of CHD  
98 presence. Therefore, we recruited age- and sex-matched male and female SARS-CoV-2 negative  
99 CHD patients ( $n=39$ ) as an internal control. As an additional healthy control, we recruited age-and  
100 sex-matched SARS-CoV-2 negative male and female blood donors (HC) ( $n=50$ ) (**Table 1**). We then  
101 measured major sex hormones (testosterone, dihydrotestosterone, estradiol and estrone) in Covid-19  
102 patients and the respective control cohorts.

103

104 Testosterone levels were reduced in the plasma of male CHD patients compared to male HC  
105 ( $P<0.0001$ ) (**Figure 2a**). This is in line with previous reports on reduced testosterone levels in male  
106 patients with cardiovascular diseases <sup>6</sup>. Of note, plasma testosterone levels were strongly reduced in  
107 male Covid-19 patients as compared to HC and CHD cohorts ( $P<0.0001$  and  $P=0.0399$ ,  
108 respectively). Most Covid-19 males had testosterone levels far below clinical reference values <sup>7,8</sup>  
109 suggesting severe testosterone consumption and/or synthesis. In females, plasma testosterone levels  
110 were comparable within the HC, CHD and Covid-19 cohorts without significant changes (**Figure**



111 **2b).** Within the measured testosterone levels, a statistical significant interaction between sex and  
112 Covid-19 and CHD cohort appears ( $P<0.0001$  and  $P<0.0163$ , respectively) (**Figure 2c**) further  
113 confirming testosterone deficiency in males. Testosterone is further metabolized to  
114 dihydrotestosterone by 5- $\alpha$  reductase. Dihydrotestosterone also acts as an androgen and plays a key  
115 role in activating the transcription of various genes and activation of various immune cells similar to  
116 testosterone<sup>9</sup>. Thus, we wanted to assess whether alterations in testosterone levels detected in Covid-  
117 19 patients are also reflected in its most potent metabolite. In male Covid-19 patients,  
118 dihydrotestosterone levels were significantly reduced compared to HC males ( $P<0.0001$ ) (**Figure**  
119 **2d**). In line, a substantial proportion of plasma dihydrotestosterone levels in Covid-19 males were  
120 even below the lowest reference range, confirming dihydrotestosterone deficiency in men. In  
121 contrast, dihydrotestosterone levels were comparable between female Covid-19 and HC cohorts  
122 within clinical references ( $P=0.9568$ ) (**Figure 2e**). Further statistical significant interaction validates  
123 dihydrotestosterone deficiency in Covid-19 males ( $P<0.0001$ ) (**Figure 2f**).

124

125 Estradiol levels were comparable in the plasma between HC and CHD males ( $P=0.6802$ ). However,  
126 plasma estradiol levels were significantly increased in Covid-19 male patients unlike HC and CHD  
127 cohorts ( $P=0.0017$  and  $P=0.0007$ , respectively) (**Figure 2g**). In females, plasma estradiol levels were  
128 comparable between HC and CHD groups ( $P=0.9764$ ). In Covid-19 females, however, plasma  
129 estradiol levels were significantly increased as compared to the HC controls and CHD patients  
130 ( $P=0.0222$  and  $P=0.0309$ , respectively) (**Figure 2h**). These statistical significance of elevated  
131 estradiol levels in Covid-19 males and females was shown in a simultaneous analysis (**Figure 2i**). To  
132 assess whether the increase in estradiol levels is attributed to a general increase in estrogens, we next  
133 measured estrone concentrations. Estrone levels in the plasma of Covid-19 males were significantly  
134 higher compared to HC males ( $P<0.0001$ ) (**Figure 2j**). Similarly, estrone levels were significantly  
135 elevated in the plasma of female Covid-19 patients unlike HC females ( $P=0.0009$ ) (**Figure 2k**).  
136 There was no statistical significant interaction between sex and cohort observed further validating  
137 the sex-independent increase in estrone levels (**Figure 2l**).

138

139 Collectively, these findings show that male and female Covid-19 patients present increased estrogen  
140 levels (estradiol and estrone). However, male Covid-19 patients additionally suffer from a severe  
141 androgen (testosterone and dihydrotestosterone) deficiency.

142

143

144

145 **Male Covid-19 patients present primary and secondary hypogonadism.**

146 To shed light on the origin of severe testosterone deficiency in male COVID-19 patients observed in  
147 this study, we further analyzed related hormones (**Table 2**). Free testosterone levels were reduced in  
148 66.7% of male Covid-19 patients compared to reference values. Conversely, 54.5% of female Covid-  
149 19 patients presented elevated levels of free testosterone. Thus, changes in total testosterone levels  
150 reported above correlate with levels of free bioavailable testosterone levels in the respective sex. We  
151 then measured levels of the sex hormone-binding globulin (SHBG) since the majority (98%) of total  
152 testosterone is bound to SHBG and only 2% is in its free, bioavailable form. Thus, in some cases,  
153 testosterone deficiencies might be masked by elevated SHBG levels. In 28.2% of male COVID-19  
154 patients, SHBG levels were elevated, which might suggest masked testosterone deficiencies in some  
155 patients. Luteinizing hormone (LH) levels were elevated in 30.8% of male COVID-19 patients, while  
156 being within the normal range in all female patients. Interestingly, 7 out of the 28 male patients with  
157 low total testosterone levels presented elevated LH levels at the same time (data not shown),  
158 suggesting impairment of Leydig cell steroidogenesis in 25.0% of the male patients. Follicle  
159 stimulating hormone (FSH) levels were elevated in 12.8% of male patients. Elevated FSH levels in  
160 these male patients were combined with elevated LH levels. In 45.5% of female patients, FSH levels  
161 were reduced, which may indicate loss of ovarian function. This would be in line with the  
162 postmenopausal status of the 10 out of 11 Covid-19 females in our cohort. Other hormones, such as  
163 thyroid stimulating hormone (TSH) and T4 were within normal ranges in the majority of male and  
164 female patients. Cortisol levels were elevated in 56.4% of male and 81.8% of female COVID-19  
165 patients.

166

167 These findings suggest that in 25% of the male COVID-19 patients with low total testosterone levels,  
168 testosterone deficiency is likely of testicular origin. Thus, in 75% of male patients, the origin of  
169 testosterone deficiency remains unclear.

170

171

172 **Disease severity in male Covid-19 patients correlates with elevated cytokine and chemokine**  
173 **responses.**

174 Next, we compared cytokine and chemokine patterns in male and female Covid-19 patients.  
175 Therefore, we analyzed a panel of 27 different cytokines and chemokines in the plasma of Covid-19  
176 patients and correlated to disease severity as assessed by the Sequential Organ Failure Assessment  
177 Score (SOFA). In general, cytokine and chemokine responses increased with increasing disease  
178 severity in male and female patients with the exception of IL-12 in males (**Figure 3**). In male Covid-

179 19 patients, particularly IFN- $\gamma$  ( $P=0.0301$ ), IL-1RA ( $P=0.0160$ ), IL-6 ( $P=0.0145$ ), MCP-1  
180 ( $P=0.0052$ ) and MIP-1 $\alpha$  ( $P=0.0134$ ) levels were significantly elevated in those with higher SOFA  
181 scores (8-11) compared to those with lower SOFA scores (2-3) (**Figure 3a-e**). In female patients,  
182 TNF- $\alpha$  levels were significantly higher in those with high SOFA scores compared to those with low  
183 SOFA scores ( $P=0.0476$ ) (**Figure 3o**). Albeit statistically not significant, IFN- $\gamma$ , IL-1RA and IL-6  
184 levels were also elevated by trend in female Covid-19 patients with high SOFA scores compared to  
185 those with low SOFA scores (**Figure 3i-k**).

186

187 These findings show that cytokine and chemokine responses, particularly IFN- $\gamma$ , IL-1RA, IL-6,  
188 MCP-1 and MIP-1 $\alpha$  are generally elevated in dependency of disease severity.

189

190

#### 191 **Sex hormone levels correlate with IFN- $\gamma$ levels in Covid-19 patients.**

192 We next addressed the question whether changes in cytokine and chemokine responses in Covid-19  
193 patients might correlate with their respective sex hormone levels given that most immune cells  
194 possess androgen and estrogen receptors<sup>9-11</sup>. Performing linear regression analysis between all 27  
195 cytokine and chemokines assessed, only IFN- $\gamma$  presented a significant correlation to estradiol  
196 ( $R^2=0.216$ ,  $P=0.009$ ; **Figure 4a**). Testosterone levels did not significantly correlate with changes in  
197 IFN- $\gamma$  levels ( $R^2=0.133$ ,  $P=0.3111$ ; **Figure 4b**).

198

199 These findings are in line with the estradiol-controlled transcription of IFN- $\gamma$  since it possesses an  
200 estrogen responsive element (ERE) in its promoter region<sup>12-14</sup>. IFN- $\gamma$  is a key activator of  
201 macrophages<sup>14,15</sup> and macrophage activation was repeatedly reported as a hallmark of Covid-19  
202 severity<sup>16</sup>.

203

204

#### 205 **Estradiol levels are associated with disease severity in male Covid-19 patients.**

206 Next, we analyzed whether sex hormone levels correlate with an increased risk for severe disease  
207 outcome as assessed by SOFA scores or the requirement for extracorporeal membrane oxygenation  
208 (ECMO) later during their ICU stay. Estradiol levels were elevated with increasing disease severity  
209 in male Covid-19 patients ( $P=0.0245$  and  $P=0.0273$ ) (**Figure 5a**). In female Covid-19 patients,  
210 estradiol levels also slightly increased with increasing disease severity, albeit statistically not  
211 significant likely due to the low sample size (**Figure 5b**). Male Covid-19 patients requiring ECMO  
212 treatment later during their ICU stay presented statistical significant higher estradiol levels than those

213 not requiring ECMO during their later stay ( $P=0.0307$ ) (**Figure 5c**). Testosterone levels did not show  
214 statistical significant changes comparing groups with different disease severity or requiring ECMO  
215 treatment in male or female patients (**Figure 5d-f**). In males, this is likely due to the fact that most  
216 male patients presented low testosterone levels below clinical references<sup>7,8</sup>. Within the female  
217 Covid-19 cohort only 1 patient required ECMO treatment; thus, not allowing statistical analysis. As  
218 an additional parameter for disease severity, we analyzed endothelial lipase levels (EL) as a marker  
219 for endothelial activation. EL is a phospholipid hydrolyzing plasma lipase that is secreted by  
220 vascular endothelial cells and is involved in adhesion of monocytes to the endothelial cell surface  
221 under inflammatory conditions<sup>17</sup> and thus contributing to endothelial inflammation<sup>18</sup>. In both, male  
222 and female Covid-19 patients, EL levels were significantly elevated compared to healthy controls  
223 (both  $P<0.0001$ ) (**Figure 5g and h**). However, EL levels did not correlate with testosterone or  
224 estradiol levels (data not shown). Interestingly, levels of adiponectin, which is involved in the  
225 inhibition of EL secretion from activated endothelial cells<sup>18</sup>, were not altered in male or female  
226 Covid-19 patients compared to the healthy cohort (**Figure 5 i and j**).

227

228 These data suggest that increased levels of estradiol and EL are associated with Covid-19 in both  
229 sexes.

230

231

### 232 **Metabolic profiling of Covid-19 patients reveals triglyceride depletion in males.**

233 Next, we wanted to study whether Covid-19 is also associated with alterations in metabolite profiles  
234<sup>19</sup> besides the herein shown changes in steroid metabolism. Therefore, we measured 630 metabolites  
235 from 26 biochemical classes in male and female Covid-19 patients compared to healthy controls.  
236 Bioinformatics revealed distinct metabolite signatures in males and females, separating male from  
237 female in an unsupervised PCA analysis (**Figure 6a**). Mainly, significantly differentially regulated  
238 metabolites were identified in both directions in male compared to female Covid-19 patients (**Figure**  
239 **6b and c**). These involved various pathways, such as primary bile acid biosynthesis, linoleic acid  
240 metabolism and glycerophospholipid metabolism (**Figure 6d**). However, in male patients,  
241 metabolites involved in primary bile acid biosynthesis and taurine and hypotaurine metabolism were  
242 up-regulated compared to female patients (**Figure 6e**). In contrast, metabolites involved in linoleic  
243 acid metabolism, alpha-linoleic acid metabolism, glycerolipid metabolism and sphingolipid  
244 metabolism are strongly down-regulated in male compared to female Covid-19 patients (**Figure 6f**).  
245 Herein, particularly 14 of the overall 21 down-regulated metabolites in male Covid-19 patients were  
246 triglycerides (**Figure 6g**).

247

248 These findings reveal strongly reduced triglyceride levels in male Covid-19 patients compared to  
249 female Covid-19 patients as a unique metabolic signature.

250

251

252 **Discussion**

253

254 Metabolic and steroid hormone analysis of critically-ill Covid-19 patients in comparison to age- and  
255 sex-matched patients with coronary heart diseases (CHD) -as a male-biased top comorbidity in our  
256 Covid-19 cohort- as well as healthy controls revealed unique metabolic signatures.

257 First, we detected severely reduced testosterone levels in Covid-19 males compared to HC or CHD  
258 patients. Estradiol levels were not changed in male healthy controls or male CHD patients analyzed  
259 herein but were strongly elevated in Covid-19 males. The vast majority (95%) of testosterone is  
260 produced in Leydig cells of the testes depending on stimulation by luteinizing hormone (LH). Only  
261 small amounts (5%) are produced in the adrenal glands. Low levels of testosterone may either be of  
262 testicular origin (primary hypogonadism), of hypothalamic-pituitary origin (secondary  
263 hypogonadism) or a combination of both, which is predominantly found in the aging male population  
264 as late onset hypogonadism<sup>20,21</sup>. Hypogonadism with and without elevated estradiol levels was  
265 reported before in patients with cardiovascular diseases as a risk factor for increased mortality in  
266 men<sup>6,22,23</sup>. Thus, extrapolating from these reports on hypogonadism in males with cardiovascular  
267 diseases, the more severely reduced testosterone levels in the male Covid-19 cohort identified herein,  
268 further highlights the high risk for males. Furthermore, it is tempting to speculate whether an initial  
269 comorbidity-driven hit with respect to low testosterone levels (also reported for patients with obesity  
270 and type II diabetes<sup>24,25</sup>, all top Covid-19 comorbidities) might put males at higher risk to develop  
271 severe Covid-19. This hypothesis is strengthened by recent findings in the golden hamster model  
272 showing that SARS-CoV-2 replicates in the reproductive system (testes, ovaries and uterus) of male  
273 and female animals. As a result, male animals present reduced testosterone and elevated estradiol  
274 levels<sup>4</sup>. This is fully in line with our findings in the Covid-19 male cohort, which present reduced  
275 testosterone levels combined with elevated estradiol levels. Whether this is due to increased  
276 aromatase CYP19A1 (converts testosterone-to-estradiol) mRNA levels in the lung as suggested in  
277 the pre-clinical animal model<sup>4</sup>, is unclear and requires further investigation. Noteworthy, the herein  
278 identified reduced testosterone levels were of testicular origin only in 25% of all male Covid-19  
279 cases. Thus, future investigations regarding the impact of non-gonadal organs, such as the lung, in  
280 testosterone-to-estradiol aromatization in Covid-19 patients are required. We furthermore observed  
281 that some female Covid-19 patients also presented elevated testosterone levels albeit statistically not  
282 significant. In our female Covid-19 cohort, all except one patient, were postmenopausal. However,  
283 the low female Covid-19 cohort size in our study is a potential limitation with respect to conclusions  
284 on female Covid-19 outcome. This was due to the fact that more men than women were admitted to

285 the ICU in the time period of recruitment further highlighting the importance of sex on critical  
286 Covid-19 outcome. Despite these limitations in the female Covid-19 cohort, other postulated an  
287 elevated Covid-19 risk for women with polycystic ovary syndrome (PCOS), a condition  
288 characterized by increased androgen levels <sup>26</sup>. This highlights the need for further investigations to  
289 understand the impact of elevated testosterone levels in women in the context of Covid-19.

290 Second, we found that similar to males, female Covid-19 patients also present elevated estradiol  
291 levels. This is in contrast to the findings in the female SARS-CoV-2 golden hamster model using  
292 young, lean and comorbidity-free animals <sup>4</sup>. Thus, future in depth investigations are required to  
293 understand the role of estradiol in postmenopausal Covid-19 patients. One possible investigation line  
294 might be to analyze whether elevated female testosterone levels might provide a substrate for the  
295 CYP19A1 aromatase resulting in elevated estradiol levels in at-risk postmenopausal women upon  
296 SARS-CoV-2 infection. However, elevated estradiol levels seem to be a risk factor for severe Covid-  
297 19 outcome in male and female patients. Male Covid-19 patients on the other hand, additionally  
298 suffer from severely depleted testosterone and dihydrotestosterone levels, which might present an  
299 additional hit putting them at increased risk compared to females.

300 Third, by analyzing 27 different cytokines/chemokines and correlating their levels to testosterone or  
301 estradiol levels using regression analysis, we identified interferon- $\gamma$  (IFN- $\gamma$ ) as a key cytokine that  
302 positively correlated with estradiol levels. This finding is of highest importance given that IFN- $\gamma$  is  
303 the key cytokine responsible for macrophage activation <sup>14,15</sup>. IFN- $\gamma$  primes macrophages that are  
304 activated by external TLR stimuli, such as viral infections and then secrete higher level of pro-  
305 inflammatory but lower level of anti-inflammatory cytokines <sup>27</sup>. Macrophage activation in the lung  
306 upon SARS-CoV-2 infection was repeatedly reported to be a hallmark of fatal Covid-19 outcome <sup>16</sup>.  
307 Macrophages contain membrane-bound as well as nuclear androgen- and estrogen-receptors. Thus, it  
308 will be of high interest to dissect the role of sex hormones and IFN- $\gamma$  in orchestrating e.g.  
309 macrophage activation, cytokine storm and endothelial activation pathways in future studies (**Figure**  
310 **S1**).

311 Fourth, analyzing over 600 metabolites representing various biochemical pathways, we identified  
312 lower triglycerides as a unique feature in critically-ill Covid-19 patients. Triglycerides are usually  
313 elevated in patients with sepsis. Inflammation-related inhibition of lipoprotein lipase due to  
314 hyperglycaemia and hyperinsulinaemia produces upregulated hepatic triglyceride production. In  
315 addition, disturbances of the mitochondrial fatty acid  $\beta$ -oxidation also lead to higher levels of  
316 triglycerides <sup>28</sup>. The underlying cause of reduced triglycerides and altered bile acid profiles in male

317 Covid-19 males is not clear but indicate an involvement of the liver, which is the responsible organ  
318 for the secretion of triglyceride-rich lipoproteins and bile acids <sup>29</sup>. In future, the disturbed lipid  
319 metabolism need particular attention given that comorbidities, such as obesity are usually associated  
320 with elevated triglyceride levels <sup>24</sup>. Interestingly, some of these species have a key role in regulating  
321 macrophage functions <sup>30</sup>, as lipids are not only a source of energy for macrophages but they are  
322 especially important to provide precursors for bioactive lipids. Altered plasma concentrations of  
323 those lipid species indicate a dysregulated lipid metabolism that could impact macrophage functions  
324 and thus severity of infectious diseases including Covid-19 <sup>30</sup>. Thus, future studies are needed to  
325 understand the complex cross-talk between lipid metabolism, endothelial cell and macrophage  
326 activation in male Covid-19 patients.

327 Collectively, our findings herein highlight that metabolic dysregulations pose a hallmark of severe  
328 Covid-19 outcome. In particular, monitoring sex hormone and triglyceride levels might offer new  
329 diagnostic opportunities for patient management and mitigation of early intervention strategies.



330 **Table 1: Patient Demographics**

<b>Characteristics</b>	<b>HC (n=50)</b>	<b>CHD (n=39)</b>	<b>COVID-19 (n=50)</b>
<b>Sex, No (%)</b>			
Male	30 (60)	25 (64)	39 (78)
Female	20 (40)	14 (36)	11 (22)
<b>Age, mean (CV), y</b>			
Male	58.5 (12.3)	65.7 (16.9)	63.0 (19.7)
Female	55.7 (17)	64.6 (21.6)	65.8 (16.7)

339

340

341

342 **Table 2: Hormone Levels in Covid-19 Patients**

Hormone Levels	Covid-19 Males (n=39)	Covid-19 Females (n=11)
<b>Free testosterone</b>		
Normal males: 20-39 yr: 7-22.7 pg/ml 40-60 yr: 6.3-17.8 pg/ml ≥61 yr: 2.5-17.8 nMol/l	13 (33.3%)	
Low (all age groups, below reference)	26 (66.7%)	
Normal females 40-60 yr: ≤2.3 pg/ml ≥61 yr: ≤2.1 pg/ml		5 (45.5%)
High (all age groups, above reference)		6 (54.5%)
<b>Sex hormone-binding globulin</b>		
Normal males: 10-40 nMol/l	27 (69.2%)	
Low: <10 nMol/l	1 (2.6%)	
High: 41-100 nMol/l	7 (17.9%)	
Very High: ≥101 nMol/l	4 (10.3%)	
Normal females: 26-110 nMol/l		7 (63.6%)
High: ≥110 nMol/l		1 (9.1%)
Low: <26 nMol/l		3 (27.3%)
<b>Luteinizing hormone</b>		
Normal males: 0-8.6 mIU/ml	27 (69.2%)	
High: ≥8.7 mIU/ml	12 (30.8%)	
Normal females: <58.5 mIU/ml		11 (100%)
<b>Follicle stimulating hormone</b>		
Normal males: 1.5-12.4 mIU/ml	32 (82.1%)	
High: 12.5-25 mIU/ml	5 (12.8%)	
Low: <1.5 mIU/ml	2 (5.1%)	
Normal females: 25.8-134.8 mIU/ml		6 (54.5%)
Low: 10-25.7 mIU/ml		5 (45.5%)
<b>Thyroid stimulating hormone</b>		
Normal: 0.27-4.2 μU/ml	30 (76.9%)	7 (63.6%)
High: >4.2 μU/ml	2 (5.1%)	1 (9.1%)
Low: <0.27 μU/ml	7 (18.0%)	3 (27.3%)
<b>Free T4</b>		
Normal: 8-17 ng/dl	38 (97.4%)	11 (100%)
High: >17 ng/dl	1 (2.6%)	
<b>Cortisol</b>		
Normal: 2.5-19.5 μg/dl	16 (40.0 %)	2 (18.2%)
High: 23-30 μg/dl	22 (56.4%)	9 (81.8%)
Low: <23 μg/dl	1 (2.6%)	

343 **Table S1: Covid-19 Comorbidities**

<b>Characteristics</b>	<b>Males (n=39)</b>	<b>Females (n=11)</b>	<b>P value</b>
<b>Comorbidities (%)</b>			
Coronary Heart Diseases (CHD)	8 (20.5)	1 (9.1)	0.6
Diabetes mellitus type II	12 (30.8)	3 (27.3)	1.0
Obesity (BMI>30)	12 (30.8)	3 (27.3)	1.0

344

345

346 **Methods**

347

348 **Ethics statement**

349 Sampling from laboratory-confirmed Covid-19 patients was reviewed and approved by the ethics  
350 committee at the Hamburg State Chamber of Physicians (registration no.: WF-053/20). The need for  
351 an informed consent for healthy blood donors (HC) and patients with coronary heart diseases (CHD)  
352 was waived by the ethics committee because data were retrieved retrospectively from electronic  
353 health records.

354

355 **Study design, setting and participants**

356 This retrospective cohort study included plasma samples collected from the first 50 laboratory-  
357 confirmed COVID-19 patients who were admitted to the ICU at the University Medical Center  
358 Hamburg-Eppendorf from March 8<sup>th</sup> to April 29<sup>th</sup>, 2020. A total of 39 male and 11 female patients  
359 were included in this study. The University Medical Center Hamburg-Eppendorf is a tertiary care  
360 hospital with 1,738 hospital beds. The Department of Intensive Care Medicine includes 12  
361 multidisciplinary ICUs with a total of 140 ICU beds, regularly. During the SARS CoV-2 pandemic, 3  
362 intensive care units were initially designated as dedicated units for the treatment of COVID-19  
363 patients. Up to 30 patients suffering from COVID-19 are currently being treated here. A further ward  
364 treated critically-ill patients with suspected COVID-19 until laboratory confirmation of SARS-CoV-  
365 2. The in-house crisis management team has developed a step-by-step plan for this purpose.  
366 Normally, the Department of Intensive Care Medicine has units for the care of all specialties,  
367 including specialized units for the treatment of acute respiratory distress syndrome (ARDS), which  
368 routinely use extracorporeal membrane oxygenation (ECMO). All samples, including plasma  
369 samples from 34 male and 11 female patients as well as serum samples from 5 male and one female  
370 patients, were collected from COVID-19 patients on the day of admission (except one sample, which  
371 was collected 1 day later) and stored at -80°C until further analyses. Methods were validated for  
372 serum samples by analyzing plasma and serum samples obtained from the same patients. Plasma  
373 samples from healthy donors were collected from the blood donation center of the transfusion  
374 medicine at the University Medical Center Hamburg-Eppendorf. Coronary heart disease patient  
375 plasma samples were collected at the University Hospital in Tübingen.

376

377 **Data collection**

378 The following demographic and clinical variables were collected retrospectively from the electronic  
379 patient data management system (PDMS) (ICM, Dräger, Lübeck, Germany): age, sex, body mass

380 index, comorbidities, Simplified Acute Physiology Score II (SAPS II) on admission, Sequential  
381 Organ Failure Assessment Score (SOFA) on admission, and classification of Acute Respiratory  
382 Distress Syndrome (ARDS) using the Berlin definition<sup>9</sup>. Additionally, we recorded antiviral  
383 treatment, supportive and experimental COVID-19 therapies, the need for mechanical ventilation and  
384 extracorporeal membrane oxygenation<sup>10</sup>. Furthermore, we followed the course of the patients and  
385 recorded discharge or death.

386

### 387 **Hormone quantification**

388 A panel of 13 hormones was measured in plasma samples of COVID-19 patients (total testosterone,  
389 free testosterone, dihydrotestosterone, androstenedione, 17- $\beta$ -estradiol, estrone, sex hormone-binding  
390 globulin, thyroid-stimulating hormone, free triiodothyronine (T3), free thyroxine (T4), luteinizing  
391 hormone, follicle-stimulating hormone and cortisol), as well as testosterone, dihydrotestosterone,  
392 estradiol and estrone levels of healthy donor samples, by an external laboratory accredited for  
393 measurements of human samples (Labor Lademannbogen, Hamburg, Germany). Cortisol, TSH, T4,  
394 LH, FSH, TT, E2 and SHBG were analyzed by electro-chemiluminescence immunoassay (ECLIA).  
395 Free TT was analyzed by enzyme-linked immunosorbent assay and DHY-TT was measured by  
396 liquid chromatography–mass spectrometry (LC-MS/MS). Estrone levels were measured by a  
397 radioimmunoassay (RIA).

398

399 Testosterone plasma levels of coronary heart disease patients were measured in a custom-made  
400 MILLIPLEX MAP Multi-Species Hormone Magnetic Bead Panel (Merck), according to the  
401 manufacturer's instructions in a Bio-Plex 200 System with high-throughput fluidics (HTF; Bio-Rad).  
402 Estradiol (Hözel Diagnostika) plasma levels of coronary heart disease patients were analyzed by  
403 ELISA following the manufacturer's instructions and measured on an ELISA microplate reader  
404 (Saphire2, Tecan).

405

### 406 **Measurement of adiponectin and endothelial lipase levels**

407 Adiponectin (Sigma-Aldrich) and endothelial lipase (IBL international) levels in plasma samples  
408 were evaluated by ELISA following the manufacturer's instructions. For adiponectin analysis,  
409 samples were diluted 1:500. All ELISAs were measured on a Saphire2 ELISA microplate reader  
410 (Tecan) and evaluated using a four parameter logistic regression (MyAssays).

411

412

### 413 **Cytokine and chemokine measurement**

414 A panel of 27 cytokines and chemokines (eotaxin, fibroblast growth factor (FGF), granulocyte-  
415 colony stimulating factor (G-CSF), interferon- $\gamma$  (IFN- $\gamma$ ), interferon  $\gamma$ -induced protein (IP-10),  
416 interleukin-2 (IL-2), interleukin-4 (IL-4), interleukin-5 (IL-5), interleukin-6 (IL-6), interleukin-7 (IL-  
417 7), interleukin-8 (IL-8), interleukin-9 (IL-9), interleukin-10 (IL-10), interleukin-12 (IL-12),  
418 interleukin-13 (IL-13), interleukin-15 (IL-15), interleukin-17 (IL-17), interleukin-1 $\beta$  (IL-1 $\beta$ ),  
419 interleukin 1 receptor antagonist (IL-1RA), monocyte chemoattractant protein-1 (MCP-1), platelet-  
420 derived growth factor-BB (PDGF-BB), regulated upon activation, normal T-cell expressed and  
421 presumably secreted chemokine (RANTES), tumor necrosis factor- $\alpha$  (TNF- $\alpha$ ), and vascular  
422 endothelial growth factor (VEGF)) was measured in plasma samples of COVID-19 patients.  
423 Cytokine and chemokine levels were measured using a Bio-Plex Pro<sup>TM</sup> multiplex assay  
424 (#M500KCAF0Y, Bio-Rad, Feldkirchen, Germany) according to the manufacturer's instructions in a  
425 Bio-Plex 200 System with high-throughput fluidics (HTF; Bio-Rad, Feldkirchen, Germany).

426

### 427 **Metabolic Profiling**

428 Before shipment, serum samples were inactivated by adding ethanol at a sample-solvent ratio of 1:2  
429 (v:v). For sample processing the MxP® Quant 500 Kit (BIOCRATES Life Sciences AG, Innsbruck,  
430 Austria) was applied following the protocol of the manufacturer. Briefly, 30  $\mu$ L of inactivated serum  
431 sample, 10  $\mu$ L of each calibration standard (n = 7) and control sample (n = 7) were transferred onto a  
432 filter containing internal standards for internal standard calibration. The filters were dried under a  
433 stream of nitrogen using a pressure manifold (Waters, Eschborn, Germany). Afterwards, the  
434 derivatization reagent phenyl isocyanate was added to each sample and incubated for 60 min. After  
435 drying under nitrogen, analytes were extracted with 5 mmol/L ammonium acetate in pure methanol  
436 and the eluate was further diluted for the LC-MS/MS analysis. The targeted analysis covered 630  
437 metabolites from several biochemical classes (amino acids, amino acid metabolites, cholesterol  
438 esters, bile acids, biogenic amines, carboxylic acids, fatty acid, acylcarnitines, glycerophospholipids,  
439 sphingolipids, and triglycerides), which were detected by tandem mass spectrometry (MS/MS) after  
440 ultra-high pressure liquid chromatographic (UHPLC) separation and flow injection analysis (FIA),  
441 respectively. Each sample measurement required two UHPLC runs and three FIA runs to cover all  
442 metabolites. All analyses were performed on an UPLC system (ACQUITY UPLC I-Class, Waters)  
443 coupled to a triple quadrupole mass spectrometer (Xevo TQ-S, Waters). Chromatographic  
444 separation was accomplished using a reversed phase column (C18, BIOCRATES) with 0.2 % formic  
445 acid in water (solvent A) and 0.2 % formic acid in acetonitrile (solvent B) as eluent system. The

446 gradient profile was in accordance with the protocol of the manufacturer. FIA solvent was methanol  
447 with a modifier, which was provided by the kit manufacturer. Data analysis of the UHPLC results  
448 was based on a seven-point curve or one-point calibration and internal standard normalization.

449

450 The bioinformatics analysis of the raw metabolite quantifications was done mostly in concordance  
451 with the Metaboanalyst pipeline <sup>31</sup> and performed in R version 4.0.2. First, missing values were  
452 replaced with minimum inferred values. Then, filtering was performed considering quality control  
453 samples with the relative standard deviation option with a cut-off of 25. Normalization of  
454 quantifications was performed using quantile-normalization followed by log-transformation. In order  
455 to eliminate any gender-specific variation of baseline metabolite levels between male and female, we  
456 first subtracted normalized log-transformed average metabolite values of either female or male  
457 healthy controls from each respective female or male Covid-19 sample and metabolite; these values  
458 are referred to as “scaled” throughout this article. Differential analysis between male and female  
459 Covid-19 samples was done using the aforementioned scaled values, applying an unpaired two-sided  
460 t-test followed by multiple testing correction (false-discovery rate or FDR). Pathway analysis was  
461 done using the KEGG database as provided by the Metaboanalyst implementation, using a  
462 hypergeometric test.

463

#### 464 **Statistical analysis**

465 Statistical evaluation for quantitative data was performed with two-way-ANOVA including the  
466 cohort and sex as independent variable as well as its interaction. For non-normal data unpaired  
467 Mann-Whitney or Kruskal-Wallis test ignoring any multiple comparisons were used. Statistical  
468 significance was defined as  $P < 0.05$  (\*  $P < 0.05$ , \*\*  $P < 0.01$  and \*\*\*  $P < 0.001$ ).

469 All statistical evaluations mentioned above were performed with SAS®, version 9.4 TS level 1M5  
470 (SAS Institute Inc., Cary, NC, United States). Graphical representation of the data was performed via  
471 GraphPad Prism 8 v. 8.4.2 (GraphPad Software, Inc.).

472

#### 473 **Author contributions**

474 GG conceived the study. SK, MS, DJ and AN were responsible for COVID-19 patient management  
475 and recruitment. GG, SK, MS and BS (Berfin Schaumburg) designed and overviewed the study  
476 design. BS, HJ, MZ and SSB conducted the cytokine and chemokine assays. ZK and BS performed  
477 hormone assays. MP performed the metabolome analysis. GG, BS, MS, AK and TB analyzed data  
478 and developed the figures. LK, BetS (Bettina Schneider) and FS conducted ANOVA models and

479 statistical tests. JA, AM, TB, JH, HS critically reviewed the manuscript and were involved in study  
480 design. GG wrote the manuscript. All authors revised the manuscript.

481

#### 482 **Acknowledgment**

483 This study was supported by a rapid response grant from the Federal Ministry of Health (BMG) to  
484 G.G.

485

#### 486 **Role of funding source**

487 The study funder had no role in study design, data collection, data analysis, data interpretation, or  
488 writing of the report. The corresponding author had full access to all the data in the study and had  
489 final responsibility for the decision to submit for publication. MS receives funding from the Medical  
490 Faculty of the University of Hamburg for clinical leave.

491

#### 492 **Declaration of Interests**

493 All authors declare no competing interests.

494



495 **Figure Legends**

496

497 **Figure 1**

498 **Covid-19 patients in the intensive care unit**

499 Shown are Covid-19 patient numbers at the Clinic for Intensive Care Medicine, at the University  
500 Medical Center Hamburg-Eppendorf within the period 9<sup>th</sup> March- 9<sup>th</sup> Decemebr 2020. Patients were  
501 further subdivided in surviving (males,  $n=63$ ; females,  $n=32$ ) and deceased (males,  $n=25$ ; females,  
502  $n=16$ ) patients.

503

504 **Figure 2**

505 **Sex hormone levels in Covid-19 patients, healthy controls and patients with coronary heart**  
506 **diseases.**

507 Testosterone (a-c), dihydrotestosterone (d-f), estradiol (g-i) and estrone (j-l) levels were measured in  
508 plasma obtained from COVID-19 patients, aged-matched healthy donors (HD) and coronary heart  
509 disease patients (CHD). Blue dots represent males (HD,  $n=30$ ; CHD,  $n=25$ ; COVID-19,  $n=30$ ) and  
510 red dots represent females (HD,  $n=20$ ; CHD,  $n=14$ ; COVID-19,  $n=11$ ) (a-l). Values are shown as  
511 median. The laboratory assessed hormone reference ranges are indicated in grey. Statistical  
512 significance was assessed via Two-Way-ANOVA.

513

514 **Figure 3**

515 **Chemokine and cytokine responses in Covid-19 patients.**

516 Shown are cytokine and chemokine levels of male and female COVID-19 patients in dependency of  
517 disease severity as assessed by SOFA scores (2-3; 4-7; 8-11). Blue dots represent males (SOFA 2-3,  
518  $n=7$ ; SOFA 4-7,  $n=15$ ; SOFA 8-11,  $n=16$ ) and pink dots represent females (SOFA 4-7,  $n=6$ ; SOFA  
519 8-11,  $n=4$ ). Cytokine and chemokines were measured in plasma obtained from COVID-19 patients  
520 by using a 27-plex immunoassay. Here, those with significant differences are shown: IFN- $\gamma$  (a,i), IL-  
521 1RA (b,j), IL-6 (c,k), MCP-1 (d,l), MIP-1 $\alpha$  (e,m), IL-10 (f,n), TNF- $\alpha$  (g,o), IL-12 (h,p). Statistical  
522 significance in males was assessed by non-parametric tests (Kruskal-Wallis test and Dunn's test for  
523 multiple comparisons). Statistical significance in females was evaluated by unpaired, two-tailed non-  
524 parametric Student's  $t$ -test (Mann-Whitney test). Statistical significance was defined as  $P \leq 0.05$   
525 (\*  $P \leq 0.05$ , \*\*  $P \leq 0.01$ ). Values are shown as median and interquartile range.

526

527

528

529 **Figure 4**

530 **Correlation of IFN- $\gamma$  levels in male and female COVID-19 patients to sex hormone levels.**

531 Testosterone and estrogen levels were measured in plasma of COVID-19 male ( $n=39$ ) and female  
532 ( $n=11$ ) patients and were plotted over the expression levels of all assessed cytokines and  
533 chemokines. Here, only IFN- $\gamma$  is displayed, which showed significant correlations in regression  
534 analysis with estradiol (a) but not testosterone (b) levels among 27 different cytokines and  
535 chemokines assessed. Statistical significance was assessed by generalized linear regression.

536

537 **Figure 5**

538 **Sex hormone levels in COVID-19 patients in dependency of disease severity.**

539 Testosterone (a-c) and estradiol (d-f) levels were measured in plasma obtained from COVID-19  
540 patients and are displayed in dependency of disease severity as assessed by SOFA scores (2-3; 4-7;  
541 8-11). Blue dots represent males (SOFA 2-3,  $n=7$ ; SOFA 4-7,  $n=15$ ; SOFA 8-11,  $n=16$ ) and pink  
542 dots represent females (SOFA 4-7,  $n=6$ ; SOFA 8-11,  $n=4$ ). Male COVID-19 patients were further  
543 subdivided into patients requiring connection to an ECMO (+ECMO,  $n=5$ ) and patients not being  
544 placed on ECMO (-ECMO,  $n=34$ ) (c,f). The laboratory assessed hormone reference ranges are  
545 indicated in grey. Statistical significance was assessed by Student's  $t$ -test (\*  $P \leq 0.05$ ,  
546 \*\*\*  $P \leq 0.001$ ). Endothelial lipase (g,h) and adiponectin (i,j) levels were measured in the plasma  
547 from COVID-19 patients and aged-matched healthy donors. Blue dots represent males (HD,  $n=30$ ;  
548 COVID-19,  $n=30$ ) and red dots represent females (HD,  $n=20$ ; COVID-19,  $n=11$ ). Values are shown  
549 as median. Statistical significance was assessed via Two-Way-ANOVA.

550

551 **Figure 6**

552 **Metabolome profiling in male and female Covid-19 patients.**

553 PCA analysis (a) of metabolome profiles for male (blue;  $n=39$ ) and female (red;  $n=11$ ) Covid-19  
554 patients using scaled normalized values (after subtracting gender-specific healthy control  
555 metabolome profiles). Differential analysis (b,c) between male and female Covid-19 patients;  
556 unpaired two-sided  $t$ -test followed by multiple testing correction was performed. Significant outliers  
557 are highlighted as blue or red in (b) or shown in (c) if  $FDR < 0.1$  and  $\Delta \text{male} - \text{female} < -0.1699$   
558 or  $\Delta \text{male} - \text{female} > 0.1699$  (reflecting a 12.5% difference). Pathway analysis was performed for  
559 all differential metabolites (d), only upregulated in male versus female (e) or only downregulated in  
560 male versus female (f); hypergeometric test was performed against the KEGG metabolite database<sup>32</sup>

561 and all pathways with  $P < 0.1$  are shown. Differential analysis showing specifically all analyzed  
562 triglycerides (g); analysis performed as in (b).

563

564

565 **Figure S1**

566 **Model: Sex hormones triggered activation of immune pathways in Covid-19 males.**

567 Critically-ill men diagnosed with Covid-19 present reduced testosterone and increased estradiol  
568 levels. Regression analysis revealed that among 27 cytokines and chemokines analyzed, only IFN- $\gamma$   
569 levels showed significant correlation to sex hormone levels. Estradiol levels positively associated  
570 with IFN- $\gamma$  levels. IFN- $\gamma$  was repeatedly reported before to have an estrogen responsive element  
571 (ERE) in its promoter region <sup>12,13,33</sup> further highlighting the role of estradiol in particular in  
572 regulating IFN- $\gamma$  transcription. Macrophages contain membrane-bound as well as nuclear acting  
573 androgen and estrogen receptors. Macrophages also contain an IFN- $\gamma$  receptor. IFN- $\gamma$  poses a major  
574 cytokine that primes macrophages for the secretion of inflammatory cytokines upon external TLR  
575 stimuli, such as viral infections <sup>27</sup>. Macrophage activation was proposed to play a key role in Covid-  
576 19 pathogenesis <sup>14-16</sup>. We further identified elevated endothelial lipase levels as a potential marker of  
577 endothelial activation in Covid-19 patients. Collectively, we herein propose that sex hormones and  
578 IFN- $\gamma$  play key roles in macrophage-mediated activation and endothelial damage in Covid-19  
579 patients.

## 580 References

581

- 582 1 Phelan, A. L., Katz, R. & Gostin, L. O. The Novel Coronavirus Originating in Wuhan, China: Challenges  
583 for Global Health Governance. *JAMA*, doi:10.1001/jama.2020.1097 (2020).
- 584 2 Zhou, F. *et al.* Clinical course and risk factors for mortality of adult inpatients with COVID-19 in  
585 Wuhan, China: a retrospective cohort study. *Lancet* **395**, 1054-1062, doi:10.1016/S0140-  
586 6736(20)30566-3 (2020).
- 587 3 Williamson, E. J. *et al.* Factors associated with COVID-19-related death using OpenSAFELY. *Nature*  
588 **584**, 430-436, doi:10.1038/s41586-020-2521-4 (2020).
- 589 4 Stanelle-Bertram, S. *et al.* SARS-CoV-2 induced CYP19A1 expression in the lung correlates with  
590 increased aromatization of testosterone-to-estradiol in male golden hamsters. *Research Square*  
591 *Preprint*, doi:10.21203/rs.3.rs-107474/v1 (2020).
- 592 5 Barrett-Connor, E. Sex differences in coronary heart disease. Why are women so superior? The 1995  
593 Ancel Keys Lecture. *Circulation* **95**, 252-264, doi:10.1161/01.cir.95.1.252 (1997).
- 594 6 Corona, G. *et al.* Hypogonadism as a risk factor for cardiovascular mortality in men: a meta-analytic  
595 study. *Eur J Endocrinol* **165**, 687-701, doi:10.1530/EJE-11-0447 (2011).
- 596 7 Yeap, B. B. *et al.* Reference ranges and determinants of testosterone, dihydrotestosterone, and  
597 estradiol levels measured using liquid chromatography-tandem mass spectrometry in a population-  
598 based cohort of older men. *J Clin Endocrinol Metab* **97**, 4030-4039, doi:10.1210/jc.2012-2265 (2012).
- 599 8 Bhasin, S. *et al.* Reference ranges for testosterone in men generated using liquid chromatography  
600 tandem mass spectrometry in a community-based sample of healthy nonobese young men in the  
601 Framingham Heart Study and applied to three geographically distinct cohorts. *J Clin Endocrinol*  
602 *Metab* **96**, 2430-2439, doi:10.1210/jc.2010-3012 (2011).
- 603 9 Gubbels Bupp, M. R. & Jorgensen, T. N. Androgen-Induced Immunosuppression. *Front Immunol* **9**,  
604 794, doi:10.3389/fimmu.2018.00794 (2018).
- 605 10 Moulton, V. R. Sex Hormones in Acquired Immunity and Autoimmune Disease. *Front Immunol* **9**,  
606 2279, doi:10.3389/fimmu.2018.02279 (2018).
- 607 11 Bereshchenko, O., Bruscoli, S. & Riccardi, C. Glucocorticoids, Sex Hormones, and Immunity. *Front*  
608 *Immunol* **9**, 1332, doi:10.3389/fimmu.2018.01332 (2018).
- 609 12 Fox, H. S., Bond, B. L. & Parslow, T. G. Estrogen regulates the IFN-gamma promoter. *J Immunol* **146**,  
610 4362-4367 (1991).
- 611 13 Nakaya, M., Tachibana, H. & Yamada, K. Effect of estrogens on the interferon-gamma producing cell  
612 population of mouse splenocytes. *Biosci Biotechnol Biochem* **70**, 47-53, doi:10.1271/bbb.70.47  
613 (2006).
- 614 14 Schroder, K., Hertzog, P. J., Ravasi, T. & Hume, D. A. Interferon-gamma: an overview of signals,  
615 mechanisms and functions. *J Leukoc Biol* **75**, 163-189, doi:10.1189/jlb.0603252 (2004).
- 616 15 Hu, X., Chakravarty, S. D. & Ivashkiv, L. B. Regulation of interferon and Toll-like receptor signaling  
617 during macrophage activation by opposing feedforward and feedback inhibition mechanisms.  
618 *Immunol Rev* **226**, 41-56, doi:10.1111/j.1600-065X.2008.00707.x (2008).
- 619 16 Merad, M. & Martin, J. C. Pathological inflammation in patients with COVID-19: a key role for  
620 monocytes and macrophages. *Nat Rev Immunol* **20**, 355-362, doi:10.1038/s41577-020-0331-4  
621 (2020).
- 622 17 Yu, J. E., Han, S. Y., Wolfson, B. & Zhou, Q. The role of endothelial lipase in lipid metabolism,  
623 inflammation, and cancer. *Histol Histopathol* **33**, 1-10, doi:10.14670/HH-11-905 (2018).
- 624 18 Badellino, K. O., Wolfe, M. L., Reilly, M. P. & Rader, D. J. Endothelial lipase is increased in vivo by  
625 inflammation in humans. *Circulation* **117**, 678-685, doi:10.1161/CIRCULATIONAHA.107.707349  
626 (2008).
- 627 19 Rauschert, S. *et al.* Sex differences in the association of phospholipids with components of the  
628 metabolic syndrome in young adults. *Biol Sex Differ* **8**, 10, doi:10.1186/s13293-017-0131-0 (2017).
- 629 20 Carnegie, C. Diagnosis of hypogonadism: clinical assessments and laboratory tests. *Rev Urol* **6 Suppl**  
630 **6**, S3-8 (2004).

- 631 21 Ross, A. & Bhasin, S. Hypogonadism: Its Prevalence and Diagnosis. *Urol Clin North Am* **43**, 163-176,  
632 doi:10.1016/j.ucl.2016.01.002 (2016).
- 633 22 Morris, P. D. & Channer, K. S. Testosterone and cardiovascular disease in men. *Asian J Androl* **14**,  
634 428-435, doi:10.1038/aja.2012.21 (2012).
- 635 23 Malkin, C. J. *et al.* Low serum testosterone and increased mortality in men with coronary heart  
636 disease. *Heart* **96**, 1821-1825, doi:10.1136/hrt.2010.195412 (2010).
- 637 24 Kelly, D. M. & Jones, T. H. Testosterone: a metabolic hormone in health and disease. *J Endocrinol*  
638 **217**, R25-45, doi:10.1530/JOE-12-0455 (2013).
- 639 25 Dhindsa, S. *et al.* Low estradiol concentrations in men with subnormal testosterone concentrations  
640 and type 2 diabetes. *Diabetes Care* **34**, 1854-1859, doi:10.2337/dc11-0208 (2011).
- 641 26 Kyrou, I. *et al.* Polycystic ovary syndrome (PCOS) and COVID-19: an overlooked female patient  
642 population at potentially higher risk during the COVID-19 pandemic. *BMC Med* **18**, 220,  
643 doi:10.1186/s12916-020-01697-5 (2020).
- 644 27 Wu, C. *et al.* IFN-gamma primes macrophage activation by increasing phosphatase and tensin  
645 homolog via downregulation of miR-3473b. *J Immunol* **193**, 3036-3044,  
646 doi:10.4049/jimmunol.1302379 (2014).
- 647 28 Green, P., Theilla, M. & Singer, P. Lipid metabolism in critical illness. *Curr Opin Clin Nutr Metab Care*  
648 **19**, 111-115, doi:10.1097/MCO.000000000000253 (2016).
- 649 29 Scheja, L. & Heeren, J. Metabolic interplay between white, beige, brown adipocytes and the liver. *J*  
650 *Hepatol* **64**, 1176-1186, doi:10.1016/j.jhep.2016.01.025 (2016).
- 651 30 Yan, J. & Horng, T. Lipid Metabolism in Regulation of Macrophage Functions. *Trends Cell Biol* **30**, 979-  
652 989, doi:10.1016/j.tcb.2020.09.006 (2020).
- 653 31 Pang, Z., Chong, J., Li, S. & Xia, J. MetaboAnalystR 3.0: Toward an Optimized Workflow for Global  
654 Metabolomics. *Metabolites* **10**, doi:10.3390/metabo10050186 (2020).
- 655 32 Kanehisa, M. & Goto, S. KEGG: kyoto encyclopedia of genes and genomes. *Nucleic Acids Res* **28**, 27-  
656 30, doi:10.1093/nar/28.1.27 (2000).
- 657 33 Karpuzoglu-Sahin, E., Hissong, B. D. & Ansar Ahmed, S. Interferon-gamma levels are upregulated by  
658 17-beta-estradiol and diethylstilbestrol. *J Reprod Immunol* **52**, 113-127, doi:10.1016/s0165-  
659 0378(01)00117-6 (2001).

660

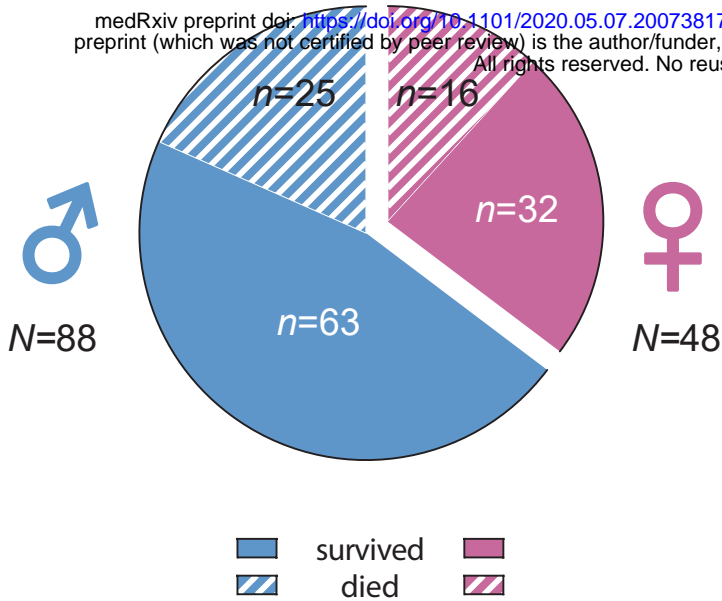


Figure 1

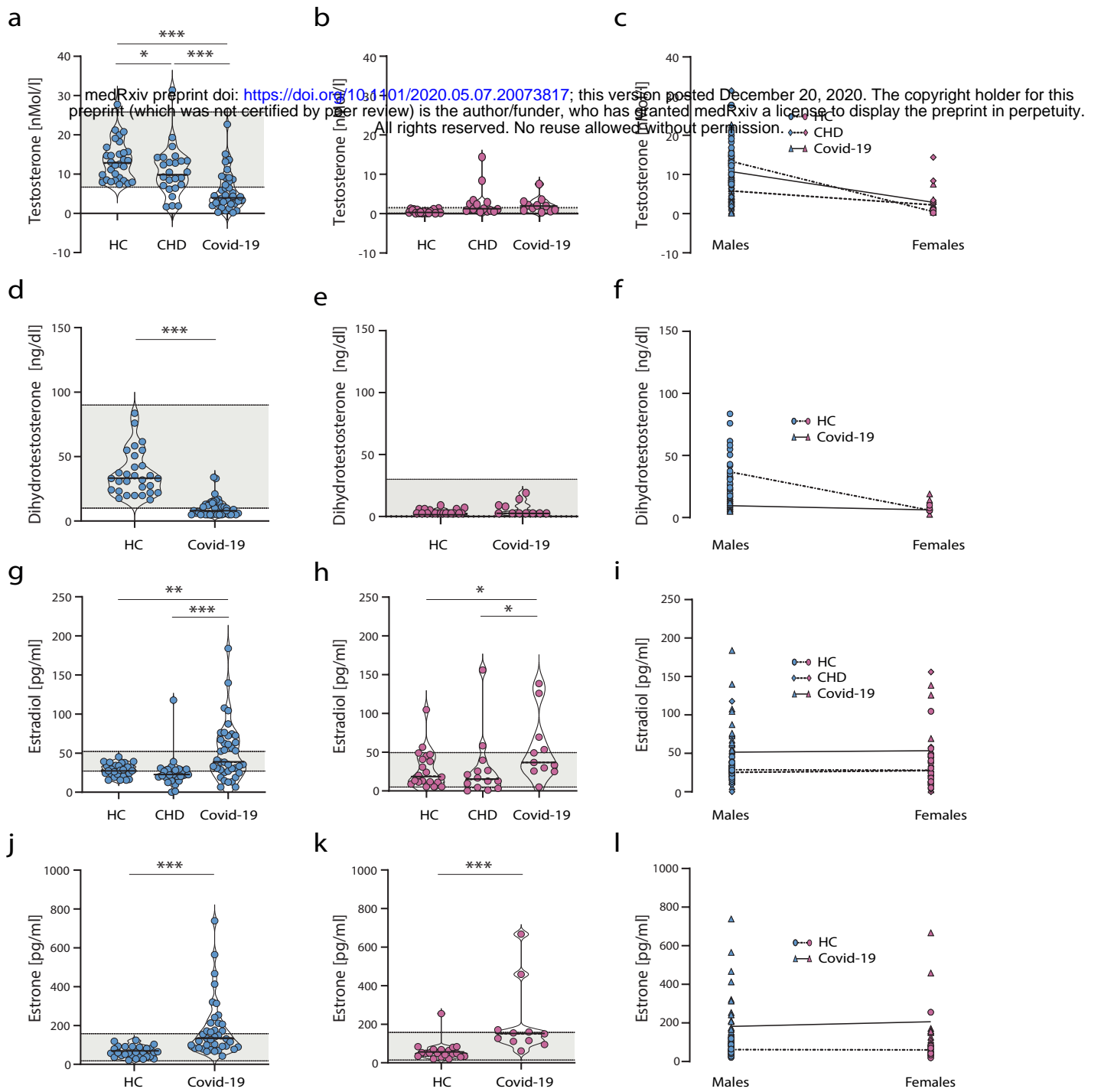


Figure 2

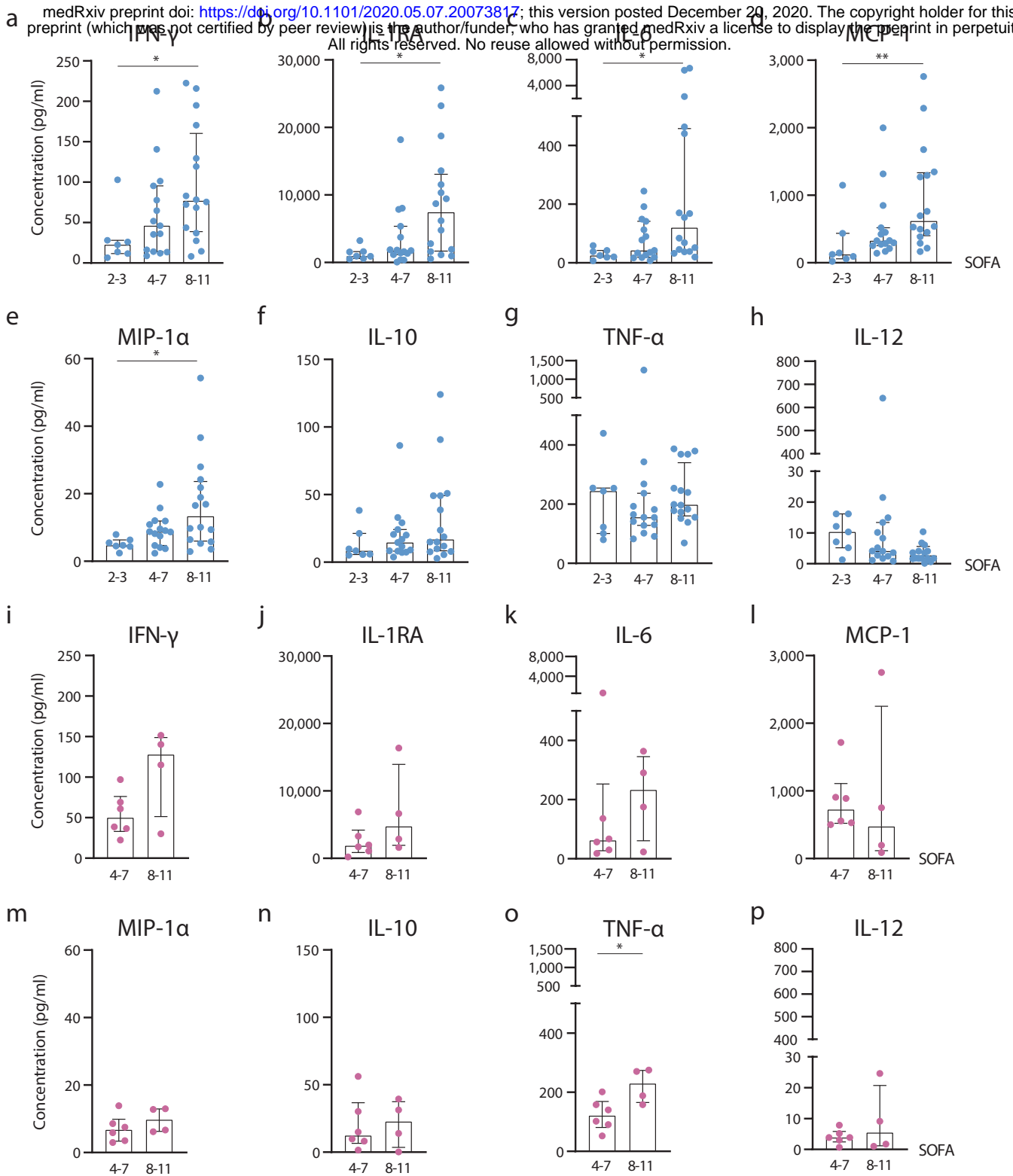
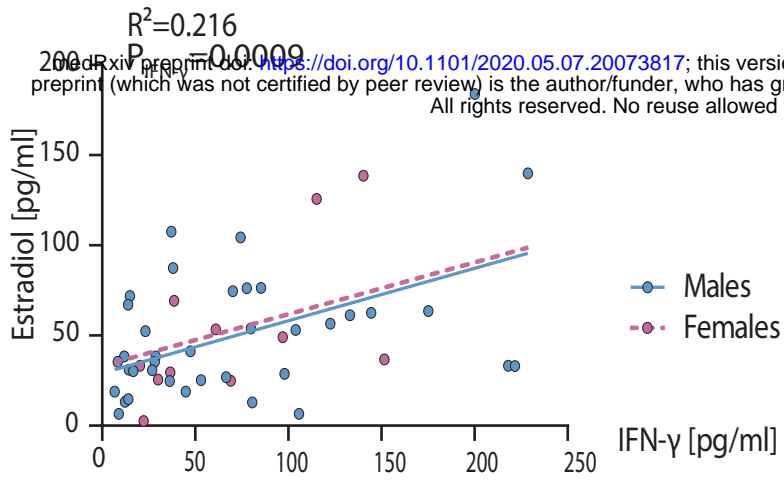


Figure 3



a



b

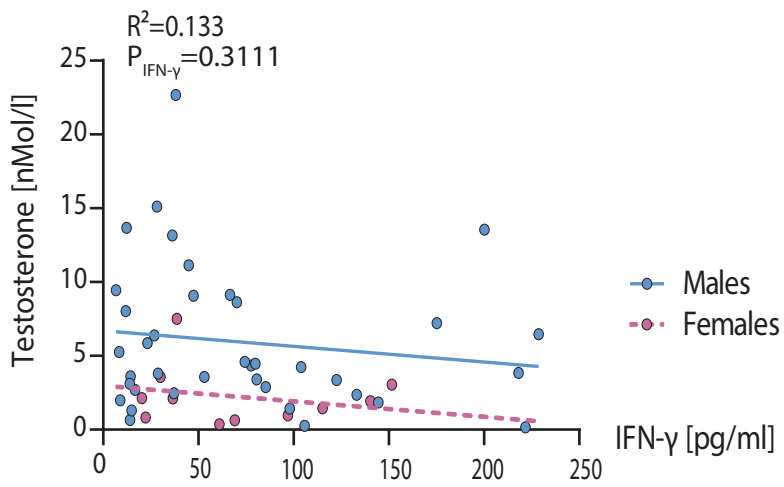


Figure 4

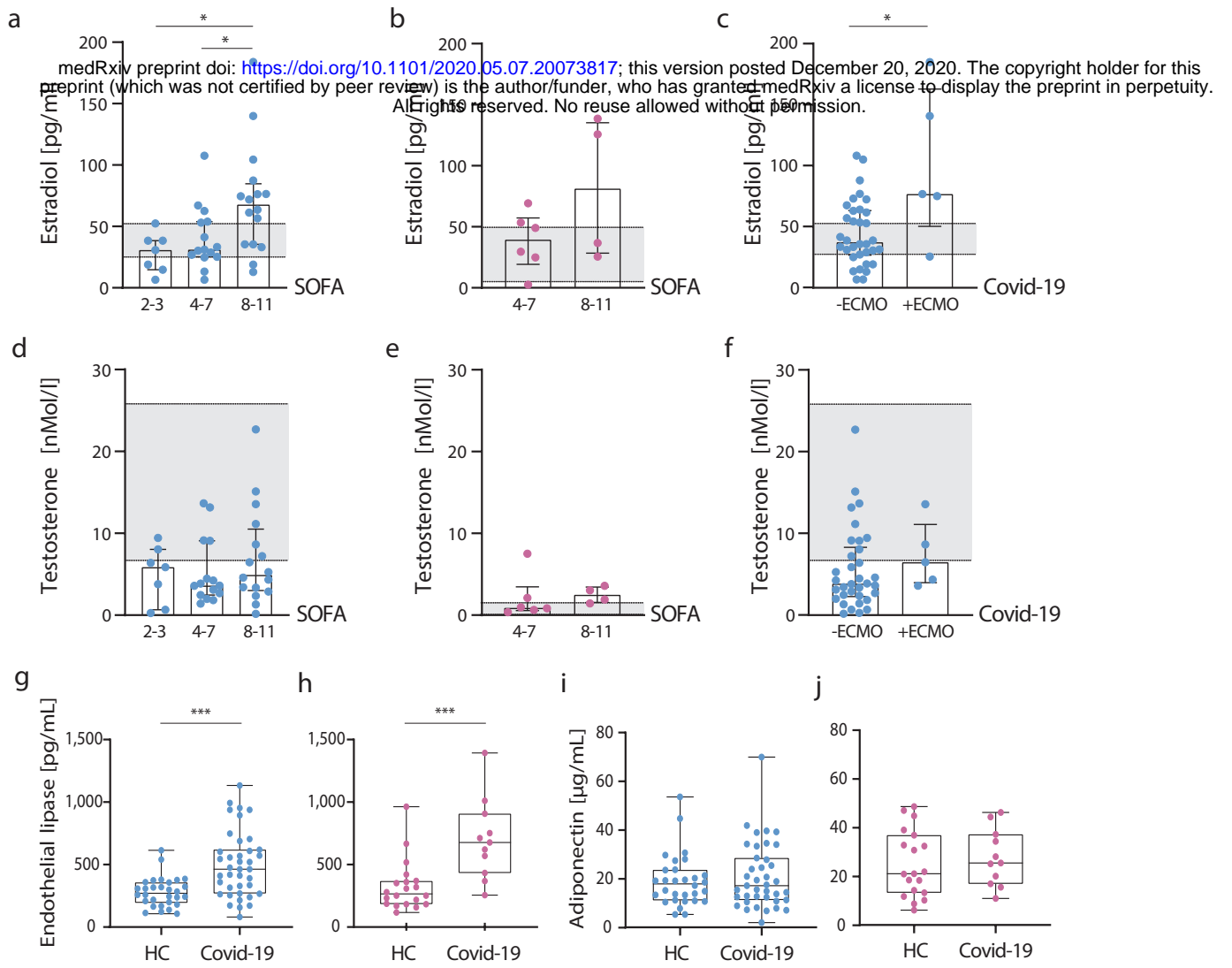


Figure 5

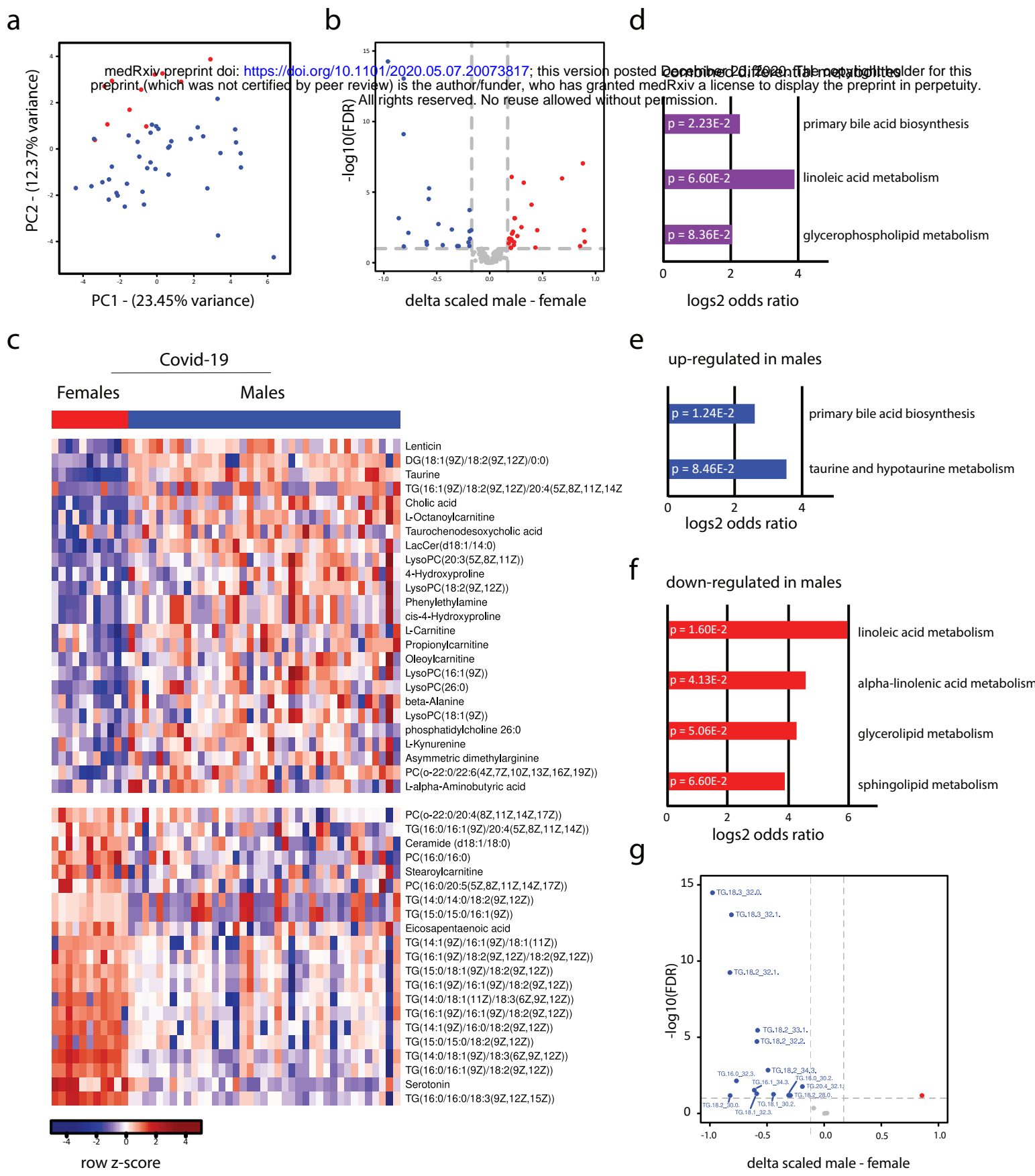


Figure 6

# Covid-19

medRxiv preprint doi: <https://doi.org/10.1101/2020.05.07.20073817>; this version posted December 20, 2020. The copyright holder for this preprint (which was not certified by peer review) is the author/funder, who has granted medRxiv a license to display the preprint in perpetuity. All rights reserved. No reuse allowed without permission.

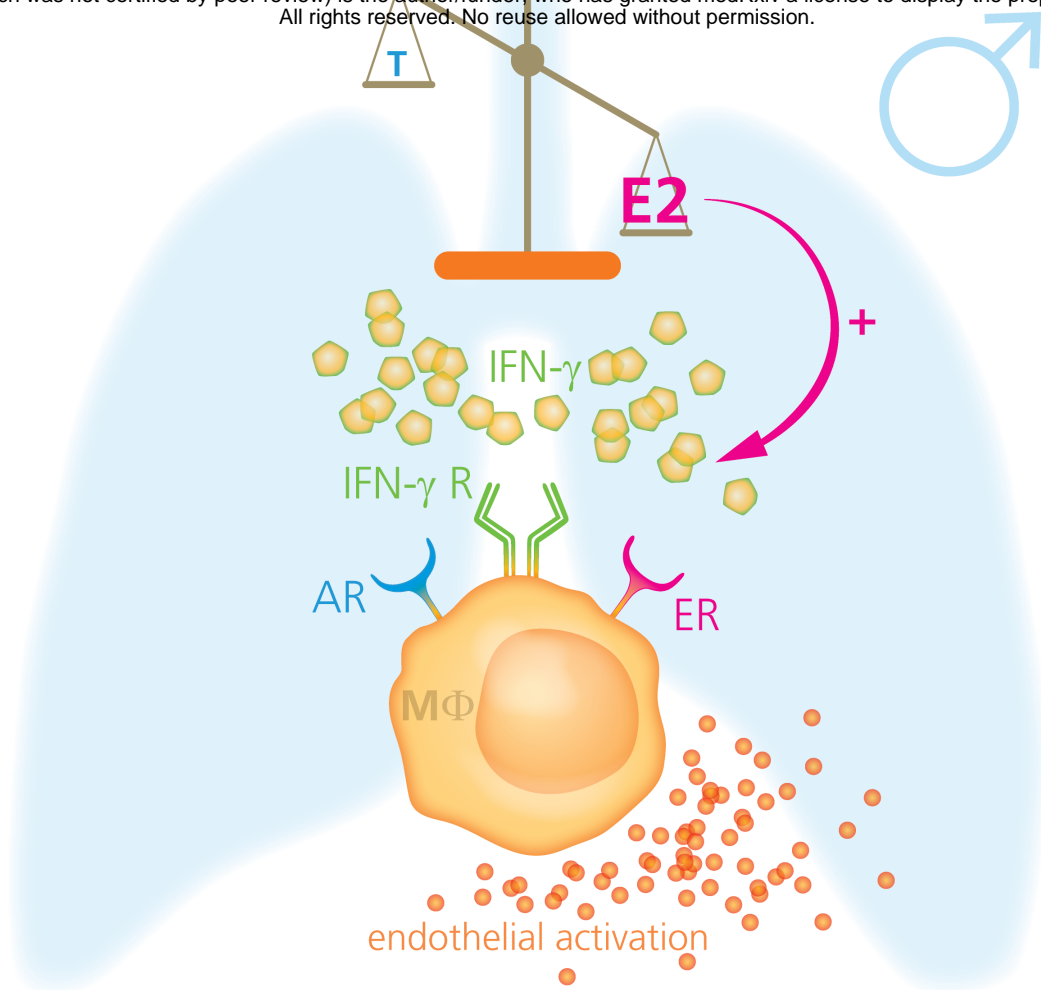


Figure S1