

CORONASTEP Report 153 (2023 - Weeks 08 and 09) SARS-CoV-2 Sewage Surveillance in Luxembourg

Summary

This report 153 presents the results of SARS-CoV-2 contamination of wastewater at the entrance of the 13 wastewater treatment plants (WWTPs) analysed during the weeks 08 and 09 of 2023. All WWTPs were tested on a weekly basis during this period.

The SARS-CoV-2 RNA flux measured in WWTPs during weeks 08 and 09 of 2023 shows a still high national prevalence of the virus, with a SARS-CoV-2 flux of between and 8×10^{11} and 3×10^{12} RNA copies per day per 100,000 population equivalents. At national level, the value observed last during the week 8 was very similar to those observed during the past two months, but **an important increase was observed this week (9)**. At the local level, this increase is almost general, but particularly marked in the influent WWTPs of Beggen, Petange, Bettembourg, MERsch and Bleesbruck and Grevenmacher.

Table 1 – National level of SARS-CoV-2 contamination of wastewaters in Luxembourg.



Dark green: negative samples for SARS-CoV-2 gene E (-), Green to red: positive samples for SARS-CoV-2 gene E. The intensity of the color is related to the national SARS-CoV-2 flux (RNA copies / day / 100 000 equivalent inhabitants).

2020	
National SARS-CoV-2 Level	Week
Dark Green	Week 3
Dark Green	Week 7
Dark Green	Week 9
Dark Green	Week 11
Light Green	Week 14
Light Green	Week 15
Light Green	Week 16
Light Green	Week 17
Light Green	Week 18
Light Green	Week 19
Light Green	Week 20
Light Green	Week 21
Light Green	Week 22
Light Green	Week 23
Light Green	Week 24
Light Green	Week 25
Light Green	Week 26
Light Green	Week 27
Light Green	Week 28
Light Green	Week 29
Light Green	Week 30
Light Green	Week 31
Light Green	Week 32
Light Green	Week 33
Light Green	Week 34
Light Green	Week 35
Light Green	Week 36
Light Green	Week 37
Light Green	Week 38
Light Green	Week 39
Light Green	Week 40
Light Green	Week 41
Light Green	Week 42
Light Green	Week 43
Light Green	Week 44-1
Light Green	Week 44-2
Light Green	Week 45-1
Light Green	Week 45-2
Light Green	Week 45-3
Light Green	Week 46-1
Light Green	Week 46-2
Light Green	Week 46-3
Light Green	Week 47-1
Light Green	Week 47-2
Light Green	Week 48-1
Light Green	Week 48-2
Light Green	Week 48-3
Light Green	Week 49-1
Light Green	Week 49-2
Light Green	Week 50-1
Light Green	Week 51-1
Light Green	Week 51-2
Light Green	Week 52
Light Green	Week 53

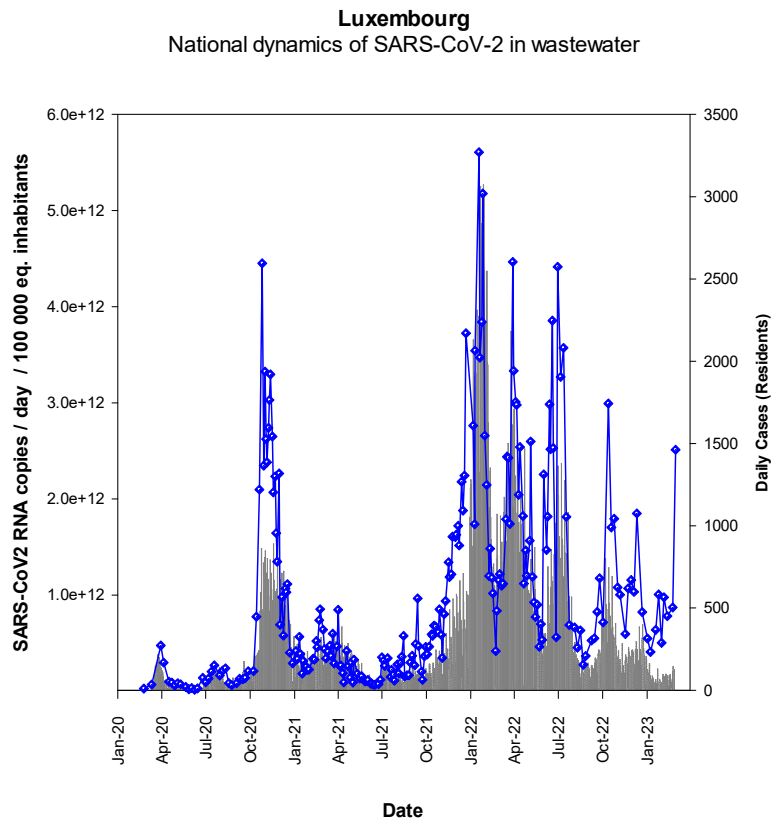
2021	
National SARS-CoV-2 Level	Week
Light Green	Week 01-1
Light Green	Week 01-2
Light Green	Week 02-1
Light Green	Week 02-2
Light Green	Week 03-1
Light Green	Week 03-2
Light Green	Week 04-1
Light Green	Week 04-2
Light Green	Week 05-1
Light Green	Week 06-1
Light Green	Week 06-2
Light Green	Week 07-1
Light Green	Week 07-2
Light Green	Week 08-1
Light Green	Week 08-2
Light Green	Week 09-1
Light Green	Week 09-2
Light Green	Week 10-1
Light Green	Week 10-2
Light Green	Week 11-1
Light Green	Week 11-2
Light Green	Week 12-1
Light Green	Week 12-2
Light Green	Week 13-1
Light Green	Week 13-2
Light Green	Week 14-1
Light Green	Week 14-2
Light Green	Week 15-1
Light Green	Week 15-2
Light Green	Week 16-1
Light Green	Week 16-2
Light Green	Week 17-1
Light Green	Week 17-2
Light Green	Week 18-1
Light Green	Week 18-2
Light Green	Week 19
Light Green	Week 20-1
Light Green	Week 20-2
Light Green	Week 21
Light Green	Week 22-1
Light Green	Week 22-2
Light Green	Week 23-1
Light Green	Week 23-2
Light Green	Week 24-1
Light Green	Week 24-2
Light Green	Week 25
Light Green	Week 26-1
Light Green	Week 26-2
Light Green	Week 27-1
Light Green	Week 27-2
Light Green	Week 28-1
Light Green	Week 29-1
Light Green	Week 29-2
Light Green	Week 30-1
Light Green	Week 30-2

2021		2022	
National SARS-CoV-2 Level	Week	National SARS-CoV-2 Level	Week
Light Green	Week 31-1	Light Green	Week 01
Light Green	Week 31-2	Light Green	Week 02-1
Light Green	Week 32-1	Light Green	Week 02-2
Light Green	Week 32-2	Light Green	Week 03-1
Light Green	Week 33-1	Light Green	Week 03-2
Light Green	Week 34-1	Light Green	Week 04-1
Light Green	Week 34-2	Light Green	Week 04-2
Light Green	Week 35-1	Light Green	Week 05-1
Light Green	Week 35-2	Light Green	Week 05-2
Light Green	Week 36-1	Light Green	Week 06-1
Light Green	Week 36-2	Light Green	Week 06-2
Light Green	Week 37-1	Light Green	Week 07-1
Light Green	Week 37-2	Light Green	Week 07-2
Light Green	Week 38-1	Light Green	Week 08-1
Light Green	Week 38-2	Light Green	Week 08-2
Light Green	Week 39-1	Light Green	Week 09-1
Light Green	Week 39-2	Light Green	Week 09-2
Light Green	Week 40-1	Light Green	Week 10-1
Light Green	Week 40-2	Light Green	Week 10-2
Light Green	Week 41-1	Light Green	Week 11-1
Light Green	Week 41-2	Light Green	Week 11-2
Light Green	Week 42-1	Light Green	Week 12-1
Light Green	Week 42-2	Light Green	Week 12-2
Light Green	Week 43-1	Light Green	Week 13-1
Light Green	Week 43-2	Light Green	Week 13-2
Light Green	Week 44-1	Light Green	Week 14-1
Light Green	Week 44-2	Light Green	Week 14-2
Light Green	Week 45-1	Light Green	Week 15-1
Light Green	Week 45-2	Light Green	Week 15-2
Light Green	Week 46-1	Light Green	Week 16-1
Light Green	Week 46-2	Light Green	Week 16-2
Light Green	Week 47-1	Light Green	Week 17-1
Light Green	Week 47-2	Light Green	Week 17-2
Light Green	Week 48-1	Light Green	Week 18-1
Light Green	Week 48-2	Light Green	Week 18-2
Light Green	Week 49-1	Light Green	Week 19-1
Light Green	Week 49-2	Light Green	Week 19-2
Light Green	Week 50-1	Light Green	Week 20-1
Light Green	Week 50-2	Light Green	Week 20-2
Light Green	Week 51-1	Light Green	Week 21-1
Light Green	Week 51-2	Light Green	Week 21-2
Light Green	Week 01	Light Green	Week 22-1
Light Green	Week 02-1	Light Green	Week 22-2
Light Green	Week 02-2	Light Green	Week 23-1
Light Green	Week 03-1	Light Green	Week 23-2
Light Green	Week 03-2	Light Green	Week 24-1
Light Green	Week 04-1	Light Green	Week 24-2
Light Green	Week 04-2	Light Green	Week 25-1
Light Green	Week 05-1	Light Green	Week 25-2
Light Green	Week 05-2	Light Green	Week 26-1
Light Green	Week 06-1	Light Green	Week 26-2
Light Green	Week 06-2	Light Green	Week 27
Light Green	Week 07-1	Light Green	Week 28
Light Green	Week 07-2	Light Green	Week 29

2022	
National SARS-CoV-2 Level	Week
Light Green	Week 08-1
Light Green	Week 08-2
Light Green	Week 09-1
Light Green	Week 09-2
Light Green	Week 10-1
Light Green	Week 10-2
Light Green	Week 11-1
Light Green	Week 11-2
Light Green	Week 12-1
Light Green	Week 12-2
Light Green	Week 13-1
Light Green	Week 13-2
Light Green	Week 14-1
Light Green	Week 14-2
Light Green	Week 15-1
Light Green	Week 15-2
Light Green	Week 16-1
Light Green	Week 16-2
Light Green	Week 17-1
Light Green	Week 17-2
Light Green	Week 18-1
Light Green	Week 18-2
Light Green	Week 19-1
Light Green	Week 19-2
Light Green	Week 20-1
Light Green	Week 20-2
Light Green	Week 21-1
Light Green	Week 21-2
Light Green	Week 22-1
Light Green	Week 22-2
Light Green	Week 23-1
Light Green	Week 23-2
Light Green	Week 24-1
Light Green	Week 24-2
Light Green	Week 25-1
Light Green	Week 25-2
Light Green	Week 26-1
Light Green	Week 26-2
Light Green	Week 27
Light Green	Week 28
Light Green	Week 29
Light Green	Week 30
Light Green	Week 31
Light Green	Week 32
Light Green	Week 33
Light Green	Week 34
Light Green	Week 35
Light Green	Week 36
Light Green	Week 37
Light Green	Week 38
Light Green	Week 39
Light Green	Week 40
Light Green	Week 41
Light Green	Week 42
Light Green	Week 43

Figure 1 – RT-qPCR quantification time-course monitoring of SARS-CoV-2 (*E* gene) in Luxembourgish wastewater samples from December 2019 to March 2023. Grey squares: daily confirmed cases for Luxembourgish residents (<https://data.public.lu/fr/datasets/donnees-covid19/>), Blue dots: cumulative SARS-CoV-2 flux (RNA copies / day / 100 000 equivalent inhabitants).

a) Linear scale



b) Log_{10} scale

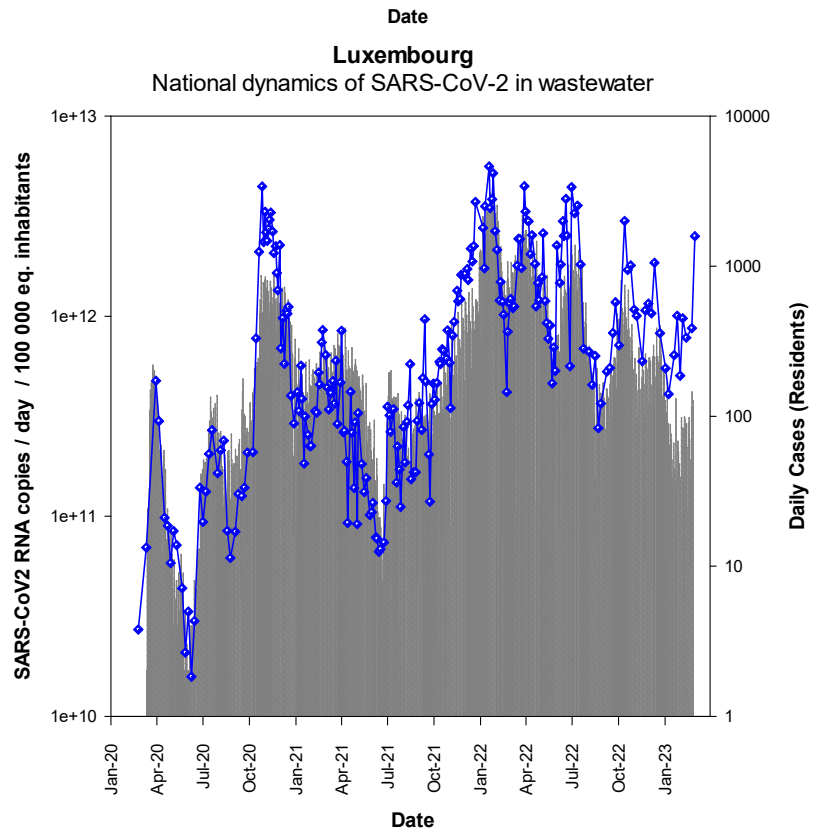


Figure 2a – RT-qPCR quantification time-course monitoring of SARS-CoV-2 (E gene) in the four most impacted wastewater treatment plants from March 2020 to March 2023. Grey squares: daily confirmed cases for the contributory area of each wastewater treatment plant, dots: SARS-CoV-2 flux (RNA copies / day / 10 000 equivalent inhabitants).

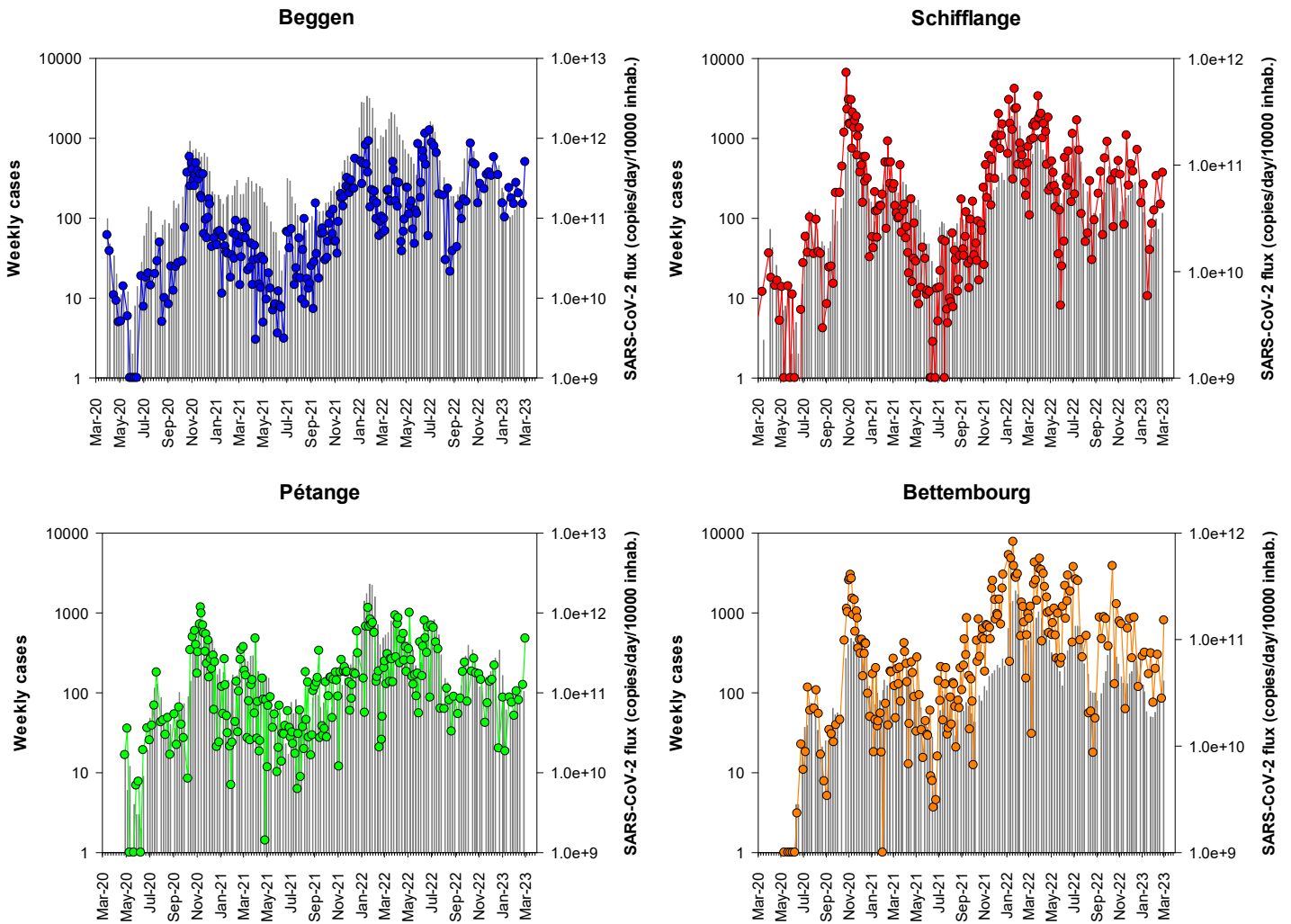


Figure 2b – Close-up of Figure 2a showing results from June 1st, 2021 on.

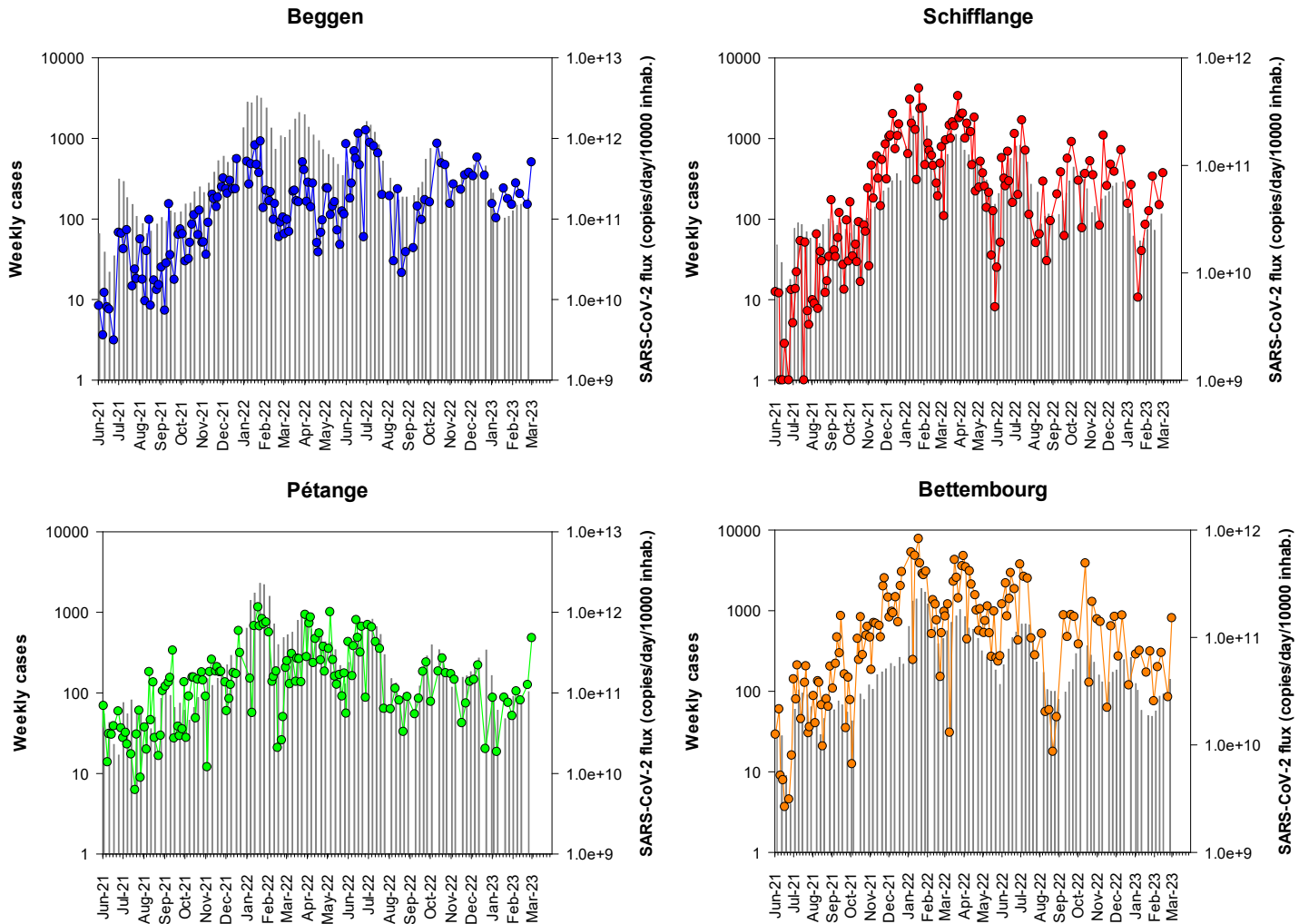


Figure 3a – RT-qPCR quantification time-course monitoring of SARS-CoV-2 (*E* gene) in Hesperange, Mersch and Boevange-sur-Attert wastewater treatment plants from May 2020 to March 2023. Grey squares: daily confirmed cases for the contributory area of each wastewater treatment plant, dots: SARS-CoV-2 flux (RNA copies / day / 10 000 equivalent inhabitants).

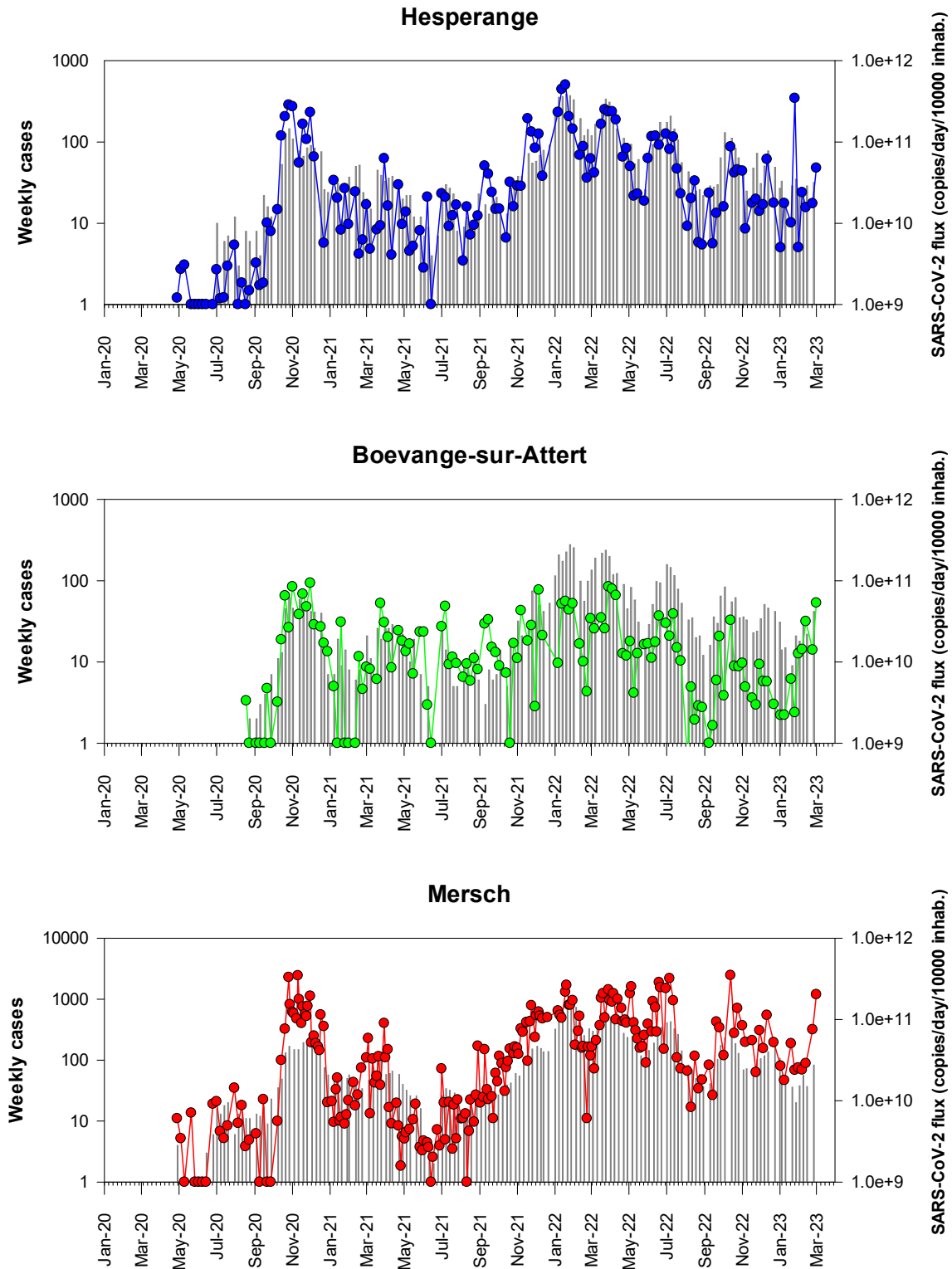


Figure 3b – Close-up of Figure 3a showing results from June 1st, 2021 on.

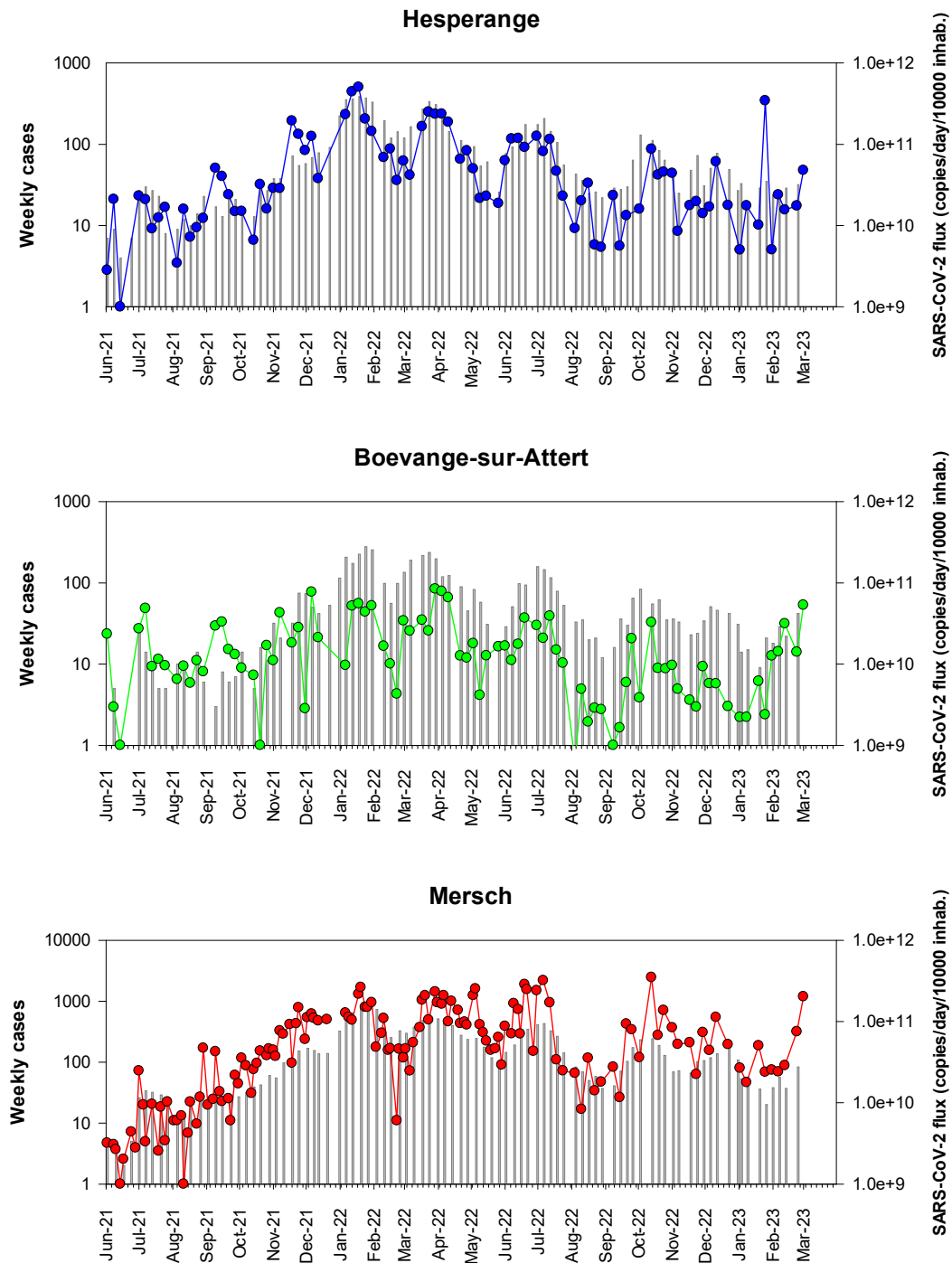


Figure 4a – RT-qPCR quantification time-course monitoring of SARS-CoV-2 (E gene) in SIDEST wastewater treatment plants from May 2020 to March 2023. Grey squares: daily confirmed cases for the contributory area of each wastewater treatment plant, dots: SARS-CoV-2 flux (RNA copies / day / 10 000 equivalent inhabitants).

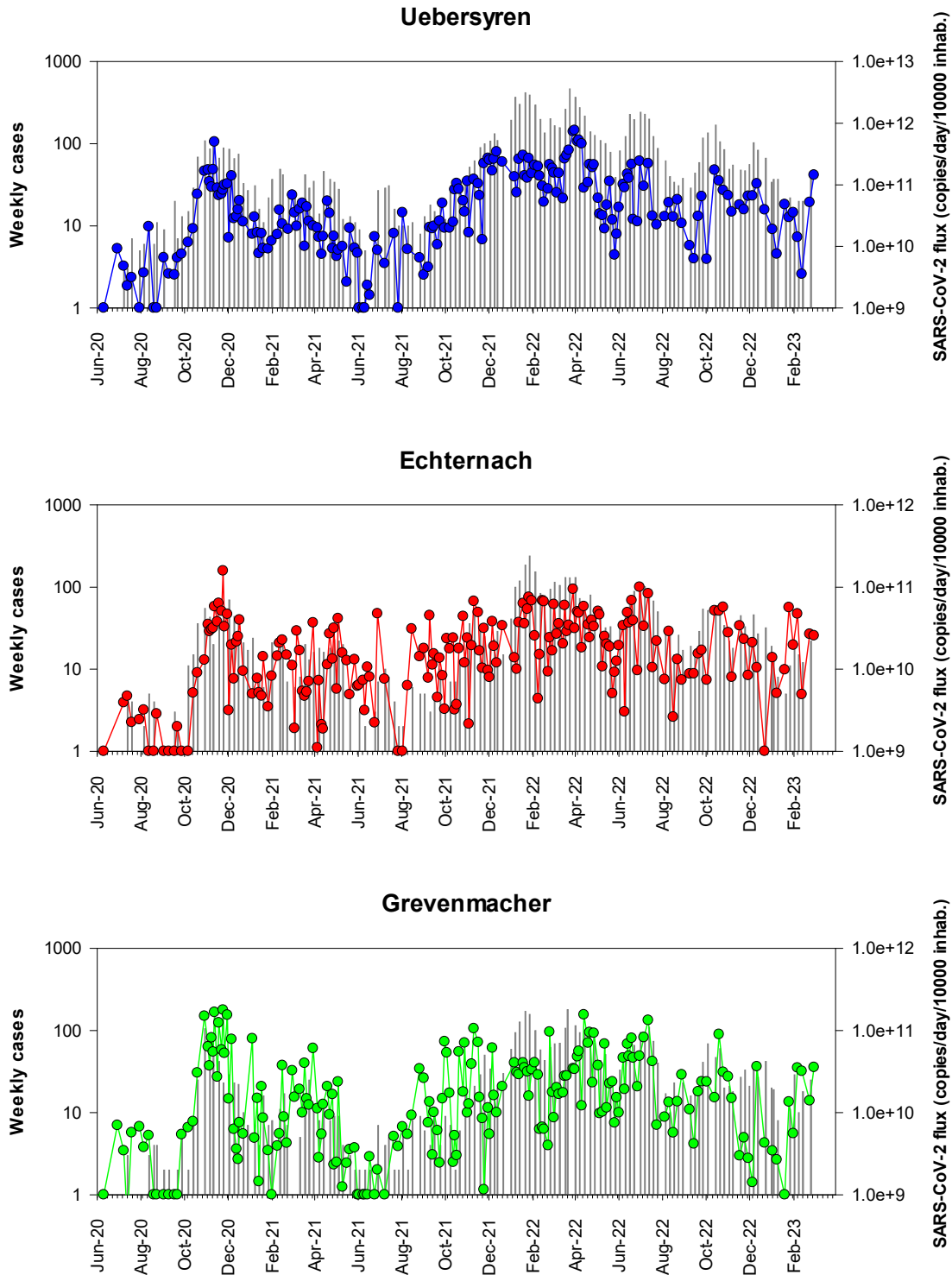


Figure 4b – Close-up of Figure 4a showing results from June 1st, 2021 on.

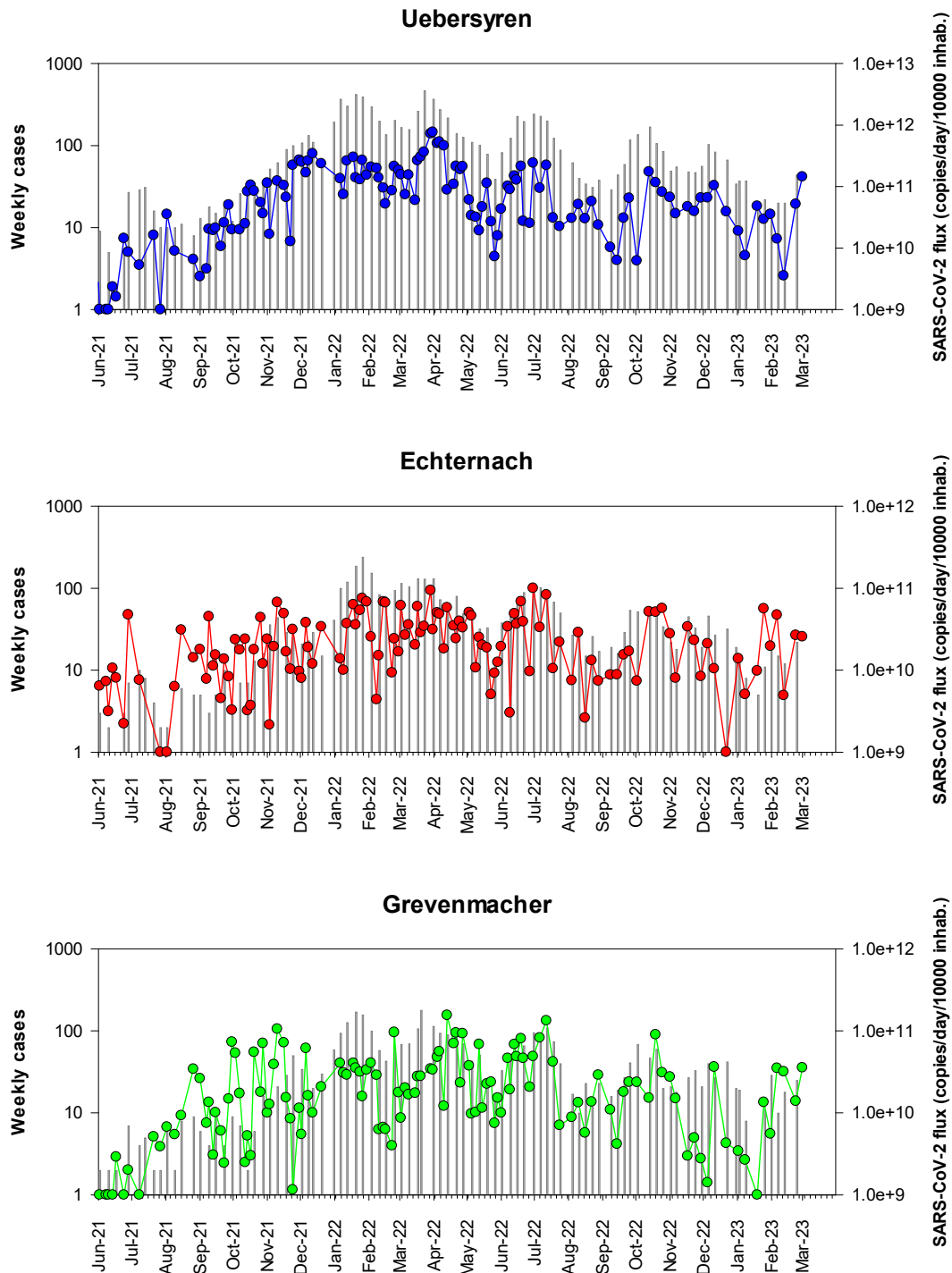


Figure 5a – RT-qPCR quantification time-course monitoring of SARS-CoV-2 (E gene) in SIDEN wastewater treatment plants from May 2020 to March 2023. Grey squares: daily confirmed cases for the contributory area of each wastewater treatment plant, dots: SARS-CoV-2 flux (RNA copies / day / 10 000 equivalent inhabitants).

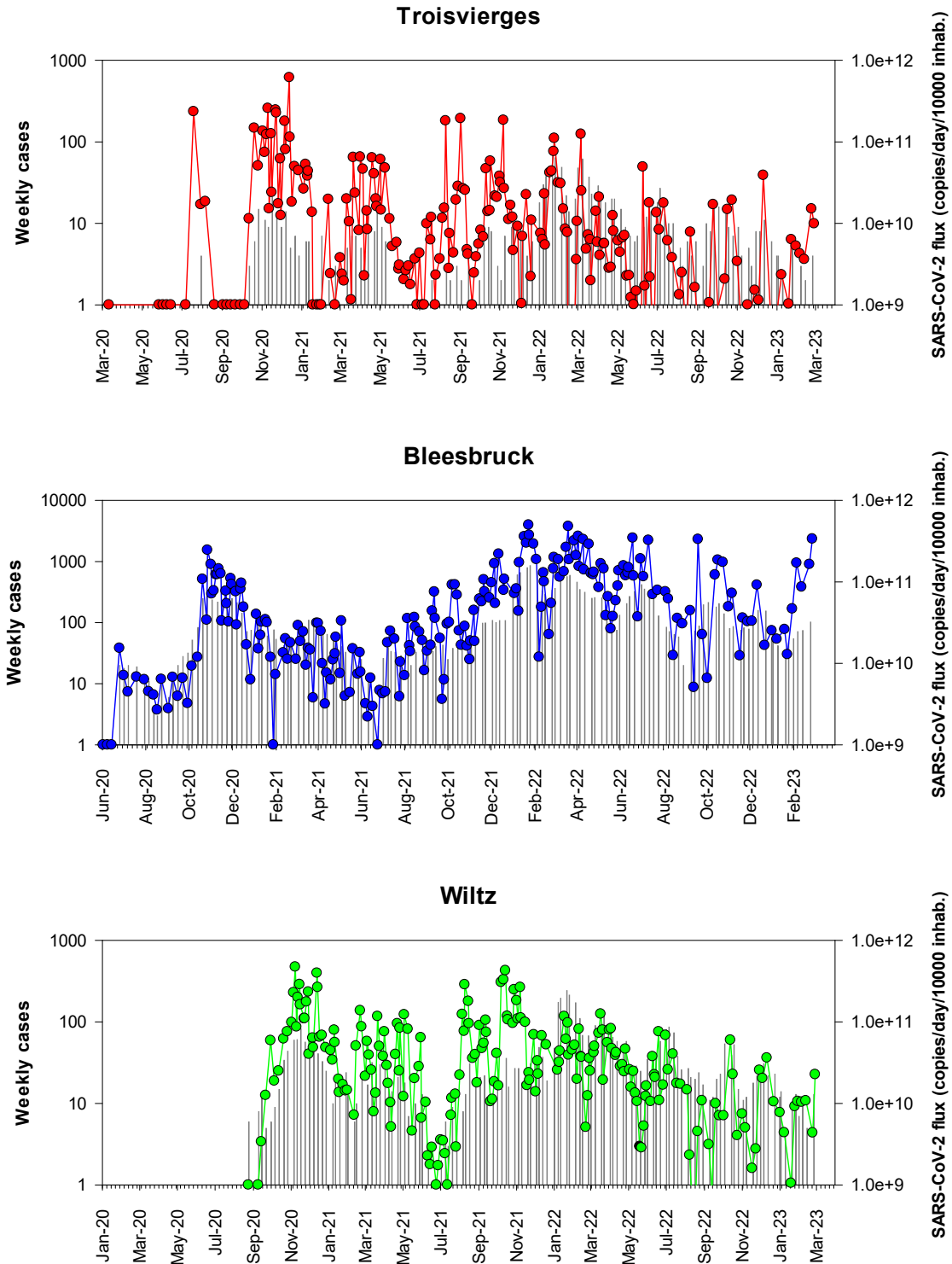


Figure 5b – Close-up of Figure 5a showing results from September 1st, 2020 on.

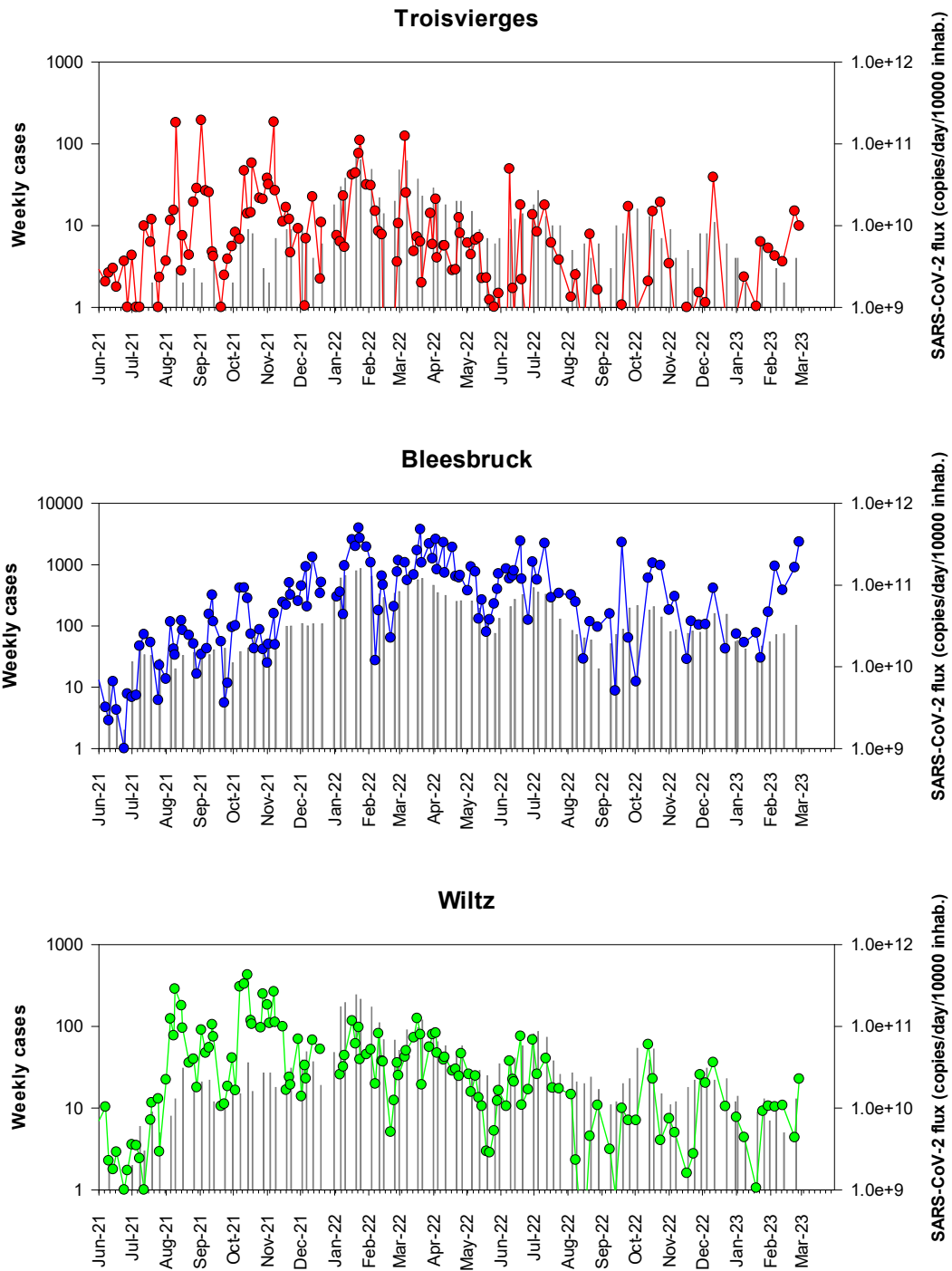


Table 3- Sewage sampling since the beginning of the CORONASTEP study

WWTP	2019	2020	2021	2022	2023	Total
Beggen		52	92	77	9	230
Bettembourg		45	91	75	9	220
Schifflange	4	56	96	76	9	241
Bleesbrück		44	92	77	9	222
Mersch		47	91	77	9	224
Pétange	4	51	96	77	9	237
Hespérange		35	48	50	9	142
Echternach		36	79	77	9	201
Uebersyren		38	78	77	9	202
Grevenmacher		38	81	76	9	204
Troisvierges		38	92	77	9	216
Boevange sur Attert		20	48	51	9	128
Wiltz		28	92	77	9	206
Total	8	528	1076	944	117	2673

Materials and Methods

Sewage samples

From March 2020 to March 2023, up to thirteen wastewater treatment plants (WWTPs) were sampled at their inlet according to the planning presented in Table 3. The operators of the WWTPs collected a 24-h composite sample according to their routine sampling procedure. Composite sample was stored at 4°C until sample processing.

Sample processing

The samples were transported to the laboratory at 4°C and viral RNA was isolated on the day of sampling. Larger particles (debris, bacteria) were removed from the samples by centrifugation at 2,400 x g for 20 min at 4°C. A volume of 120 mL of supernatant was filtered through Amicon® Plus-15 centrifugal ultrafilter with a cut-off of 10 kDa (Millipore) by centrifugation at 3,220 x g for 25 min at 4°C. The resulting concentrate was collected and 140 µL of each concentrate was then processed to extract viral RNA using the QIAamp Viral RNA mini kit (Qiagen) according to the manufacturer's protocol. Elution of RNA was done in 60 µL of elution buffer.

Real-time One-Step RT-PCR

Samples were screened for the presence of *Sarbecovirus* (*Coronaviridae*, *Betacoronaviruses*) and/or SARS-CoV-2 virus RNA by two distinct real-time one-step RT-PCR assays, targeting the E gene (Envelope small membrane protein) and the N gene (nucleoprotein). The E gene real-time RT-PCR can detect *Sarbecoviruses*, i.e. SARS-CoV, SARS-CoV-2 and closely related bat viruses. In the context of the COVID19 pandemic, it can be assumed that only SARS-CoV-2 strains will be detected by this assay given that SARS-CoV virus has been eradicated and other bat viruses do not commonly circulate in the human population. The E gene assay is adapted from Corman et al. [17]. The N gene real-time RT-PCR assay (N1 assay) specifically detects SARS-CoV-2 virus. It is adapted from the CDC protocol¹. The two primers/probe sets are presented in Table 3. The RT-qPCR protocols and reagents were all provided by the LIH.

Table 4 – RT-qPCR primer-probe sets

Target	Primer name	Primer sequence (5' to 3')	References
E gene	E_Sarbeco_F1	5-ACAGGTACGTTAATAGTTAATAGCGT-3	Corman et al., 2020
	E_Sarbeco_R2	5-ATATTGCAGCAGTACGCACACA-3	
	E_Sarbeco_P1	5'-FAM-ACACTAGCCATCCTTACTGCGCTTCG-BHQ1	
N gene	2019-nCoV_N1_Fw	5'-GAC CCC AAA ATC AGC GAA AT-3'	CDC, 2019
	2019-nCoV_N1_Rv	5'-TCT GGT TAC TGC CAG TTG AAT CTG-3'	
	2019-nCoV_N1 Probe	5'-FAM-ACC CCG CAT TAC GTT TGG TGG ACC-BHQ1-3'	

Each reaction contained 5 µL of RNA template, 5 µL of TaqPath 1-step RT-qPCR MasterMix (A15299, Life Technologies), 0.5 µL of each primer (20 µM) and probe (5 µM) and the reaction volume was adjusted to a final volume of 20 µL with molecular biology grade water. Thermal cycling reactions were carried out at 50 °C for 15 min, followed by 95 °C for 2 min and 45 cycles of 95 °C for 3 sec and 58°C (E gene) or 55°C (N gene) for 30 sec using a Vii7 Real-Time PCR Detection System (Life Technologies). Reactions were considered positive (limit of detection – LOD) if the cycle threshold (Ct value) was below 40 cycles.

¹ <https://www.cdc.gov/coronavirus/2019-ncov/downloads/rt-pcr-panel-primer-probes.pdf>

Controls

A non-target RNA fragment commercially available (VetMAX™ Xeno™ IPC and VetMAX™ Xeno™ IPC Assay, ThermoFischer Scientific) was added to the viral RNA extract from sewage concentrates as an internal positive control (IPC). This IPC-RNA is used to control the performance of the RT-qPCR (E gene) and to detect the presence of RT-qPCR inhibitors.

Viral RNA copies quantification of both targeting genes in wastewater samples was performed using RT-qPCR standard curves generated using EDX SARS-CoV-2 Standard (Biorad). This standard is manufactured with synthetic RNA transcripts containing 5 targets (E, N, S, ORF1a, and RdRP genes of SARS-CoV-2, 200,000 copies/mL each). Using such a standard, the limits of quantification (LOQ) of both RT-qPCR assays were estimated to 1 RNA copy per reaction (Figure 6).

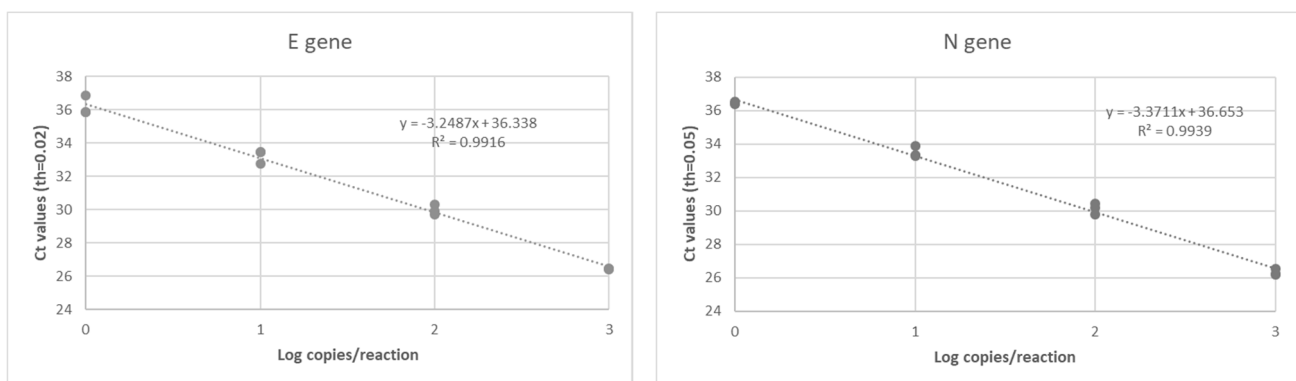


Figure 6 – RT-qPCR standard curves established for both target genes (E gene and N gene) of SARS-CoV-2 using a commercially available standard (Biorad).

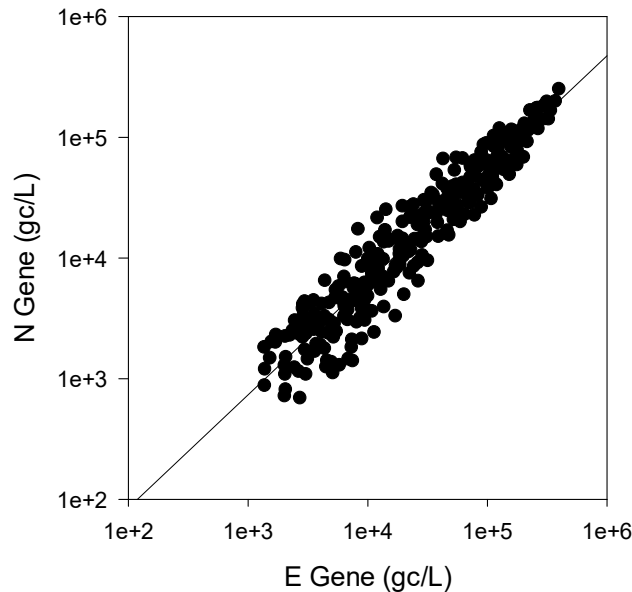
Data interpretation

A sample is declared positive for the presence of SARS-CoV-2 if both targets (E and N gene) are detected with Ct values less than or equal to the LOQ. If only one target is detected or if target genes are detected with Ct values between the LOD and the LOQ, samples are reported as presumptive positive (+/-). A sample is declared negative when no target genes are detected (Ct values superior to the LOD).

In case of presumptive positive, sample is tested again using another RT-qPCR detection assay (Allplex 2019-nCoV Assay, Seegene). This commercially available detection kit is a multiplex real-time RT-PCR assay for simultaneous detection of three target genes of SARS-CoV-2 in a single tube. The assay is designed to detect RdRP and N genes specific for SARS-CoV-2, and E gene specific for all *Sarbecovirus* including SARS-CoV-2.

As shown in Figure 7, a highly significant correlation (Pearson Correlation, $R^2=0.964$, $p = 5.979 \cdot 10^{-24}$) was obtained between the SARS-CoV-2 RNA concentrations estimated using the E gene and the N gene, respectively. Therefore, only the E gene results were presented in this report.

Figure 7 - Relationship between the SARS-CoV-2 RNA concentration (RNA copies / L of wastewater) estimated by the both distinct RT-qPCR systems targeting the E and N gene, respectively (n=415),



Acknowledgments

This work is supported by the Fond National de la Recherche (FNR) under project 14806023 - CORONASTEP+ and is conducted in collaboration with the Luxembourg Institute of Health (LIH), the “Laboratoire National de Santé” (LNS) and the University of Luxembourg (LCSB).

In addition, the authors of this report would like to thank all the wastewater syndicates (SIACH, SIVEC, STEP, SIDERO, SIDEN and SIDEST), the “Ville du Luxembourg”, the Hesperange city as well as the “Administration de la Gestion de l’Eau” (AGE) for their kind and valuable assistance in the sample collection, the acquisition of wastewater parameters and the collection of demographic data. The authors would also like to thank the Ministry of Health and the Inspection Sanitaire for their valuable contribution in providing the COVID-19 data at the national and regional scale.