

## WINDWARD



Incredible views are framed throughout this updated beach cottage. The floor plan has been carefully designed with simple geometry to maximize exposure to sea breezes. Each bedroom boasts direct access to a private deck, encouraging interaction with nature, and blurring the borders between inside and out.

## WINDWARD

architect: Christopher Rose

landscape architects:

Sheila Wertimer & Cindy Cline

heated square feet: 2,868

total square feet: 4,215

### GROUND LEVEL

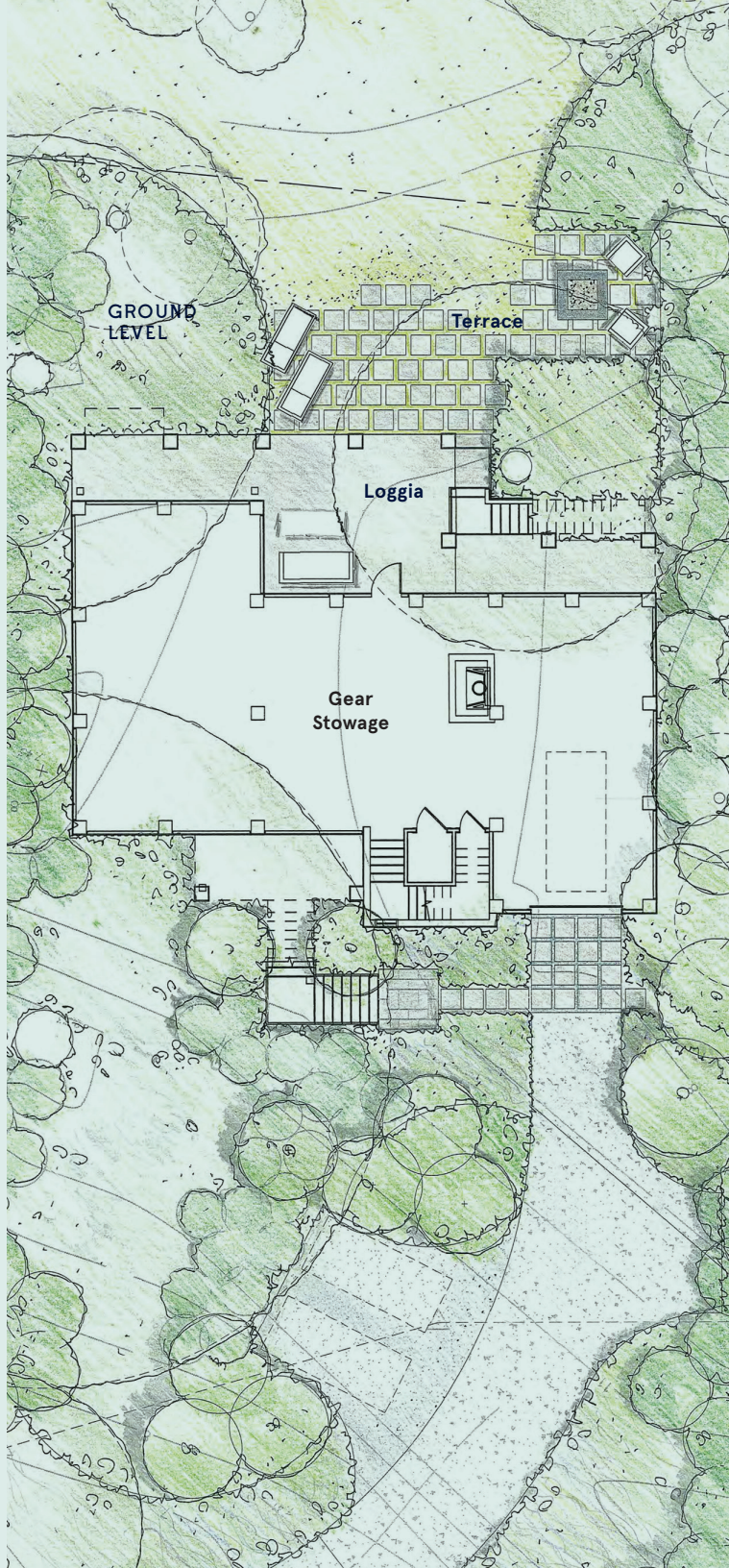
Loggia	19' x 16'
Terrace	20' x 16'
Gear Stowage	23' x 12'

### FIRST FLOOR

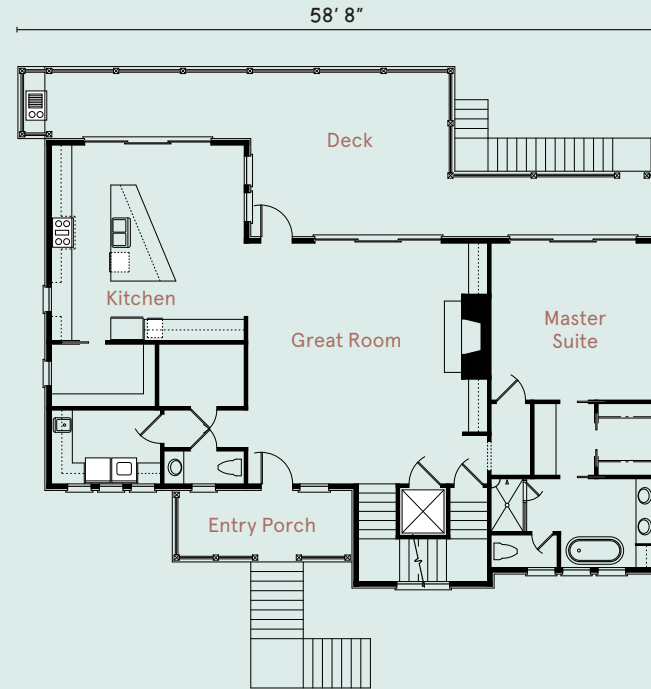
Entry Porch	17' x 7'
Great Room	23' x 23'
Kitchen	19' x 19'
Master Bedroom	15' x 16'
Deck	58' x 16'

### SECOND FLOOR

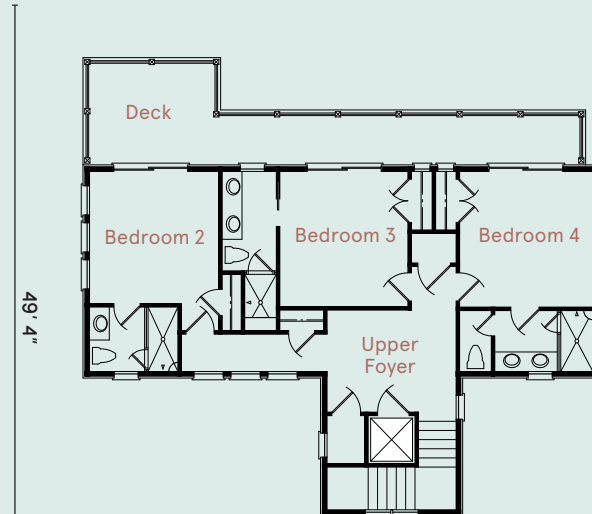
Upper Foyer	12' x 10'
Bedroom 2	12' x 13'
Bedroom 3	12' x 13'
Bedroom 4	12' x 13'
Deck	13' x 10'

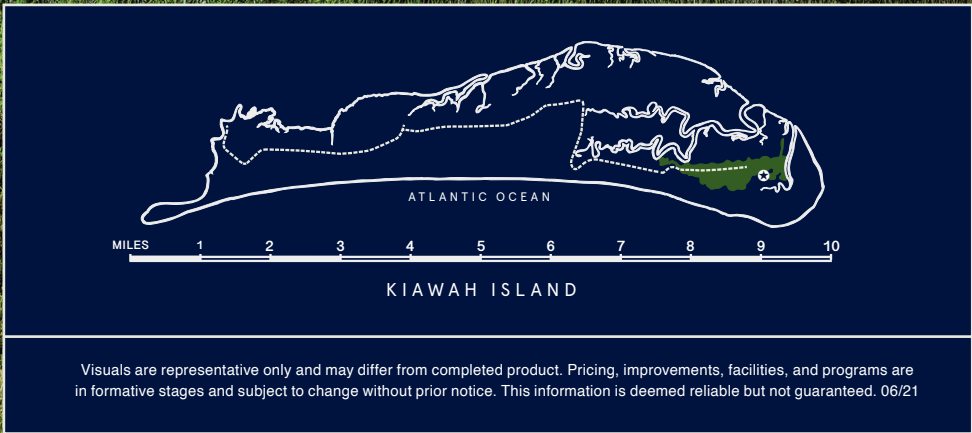


### FIRST FLOOR



### SECOND FLOOR





Visuals are representative only and may differ from completed product. Pricing, improvements, facilities, and programs are in formative stages and subject to change without prior notice. This information is deemed reliable but not guaranteed. 06/21

