



The ingenious floor plan was designed around an expandable main living space for entertaining large groups while still feeling manageable and intimate for everyday use by residents. Tall ceilings accessorized by great expanses of glass allow light to flood the interior. Operating the glass allows inhabitants to channel the exceptional sea breezes that sweep across Marsh Walk.



# SAVANNA

architects: Robbie & Abby Lesslie

landscape architects:

Sheila Wertimer & Cindy Cline

heated square feet: 3,180

total square feet: 4,423

## GROUND LEVEL

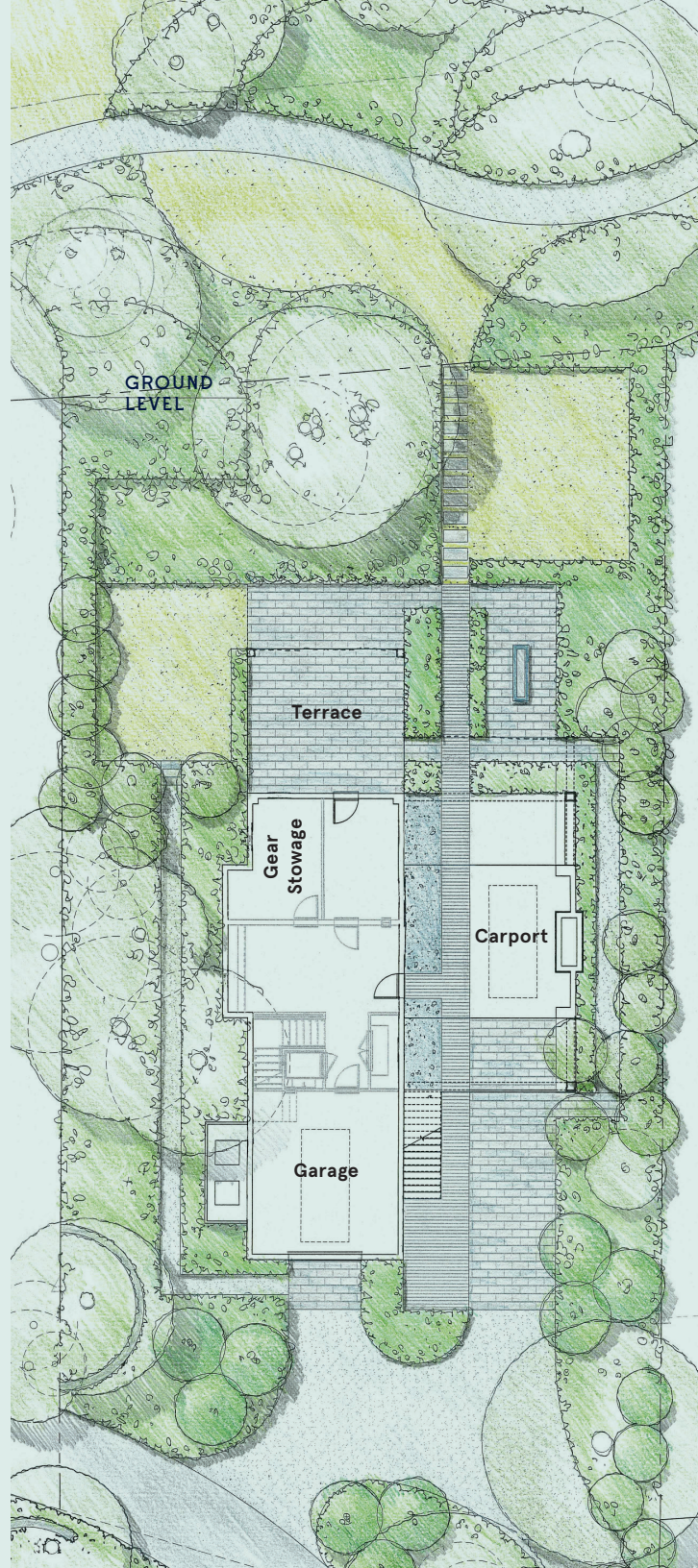
Garage	18' x 20'
Carport	11' x 19'
Gear Storage	10' x 15'
Terrace	18' x 18'

## FIRST FLOOR

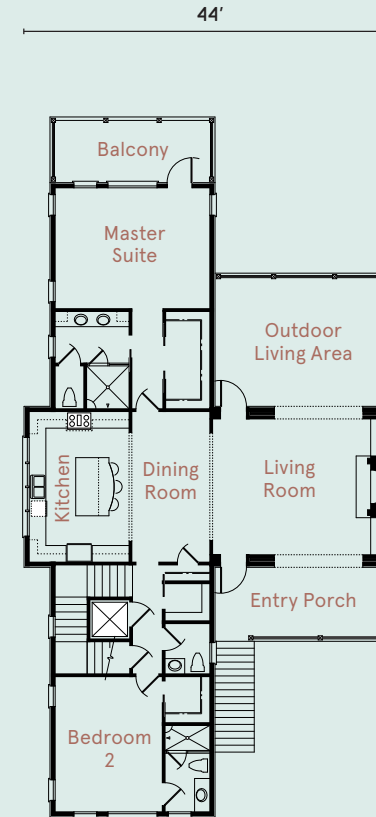
Entry Porch	22' x 9'
Living Room	21' x 16'
Dining Room	9' x 18'
Kitchen	12' x 18'
Outdoor Living Area	22' x 16'
Master Bedroom	19' x 15'
Balcony	20' x 8'
Bedroom 2	16' x 13'

## SECOND FLOOR

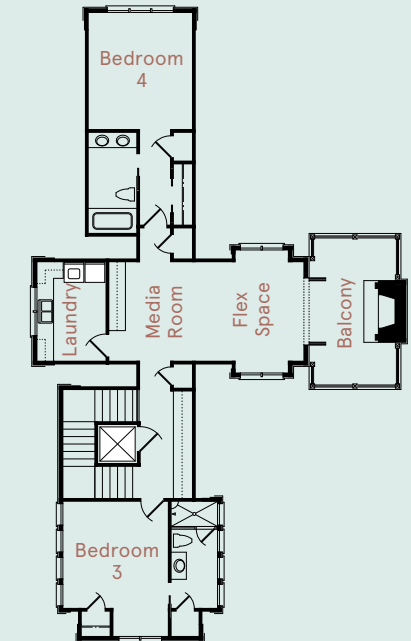
Bedroom 3	13' x 13'
Media Room	12' x 13'
Flex Space	15' x 15'
Balcony	11' x 19'
Bedroom 4	13' x 14'
Laundry	8' x 13'



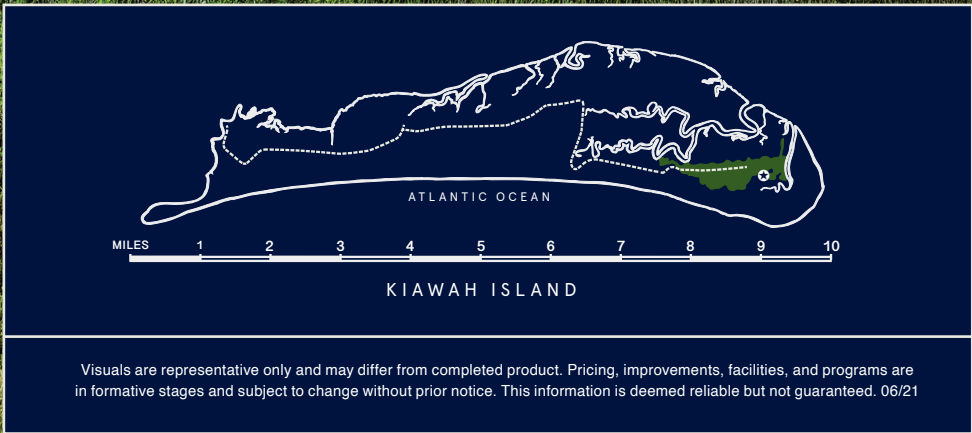
## FIRST FLOOR



## SECOND FLOOR







Visuals are representative only and may differ from completed product. Pricing, improvements, facilities, and programs are in formative stages and subject to change without prior notice. This information is deemed reliable but not guaranteed. 06/21

**Marsh Walk**  
OCEAN PARK