

PERIWINKLE



A variety of living spaces make Periwinkle ideal for multiple generations and for maximum indoor/outdoor enjoyment. The open floor plan's vaulted living space and large expanses of glass optimize views into the courtyard or the beauty of the surrounding marsh, as do a duet of master suites, one positioned on each floor.

PERIWINKLE

architect: Heather Wilson

landscape architect: Josh Dunn

heated square feet: 4,431

total square feet: 5,589

GROUND LEVEL

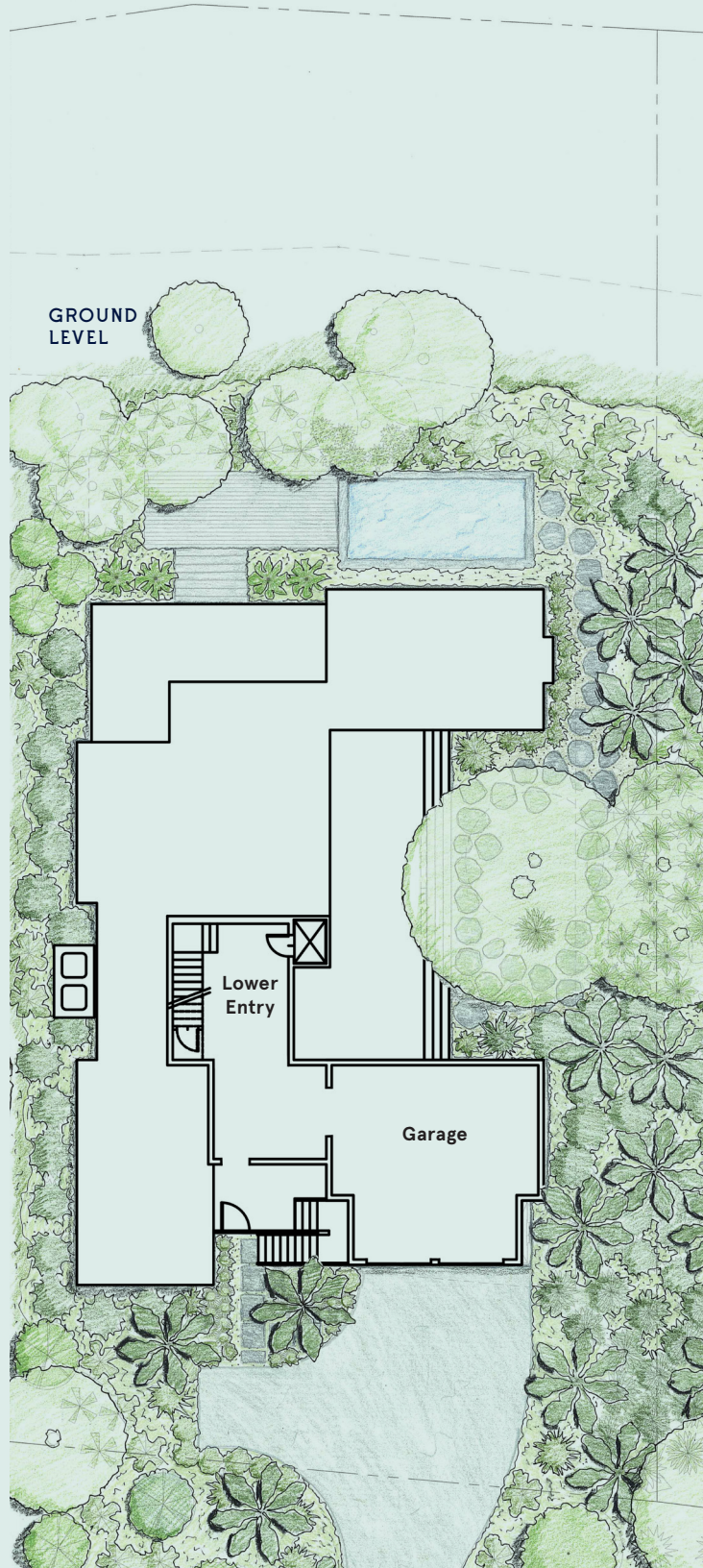
Garage 25' x 25'
Lower Entry 15' x 30'

FIRST FLOOR

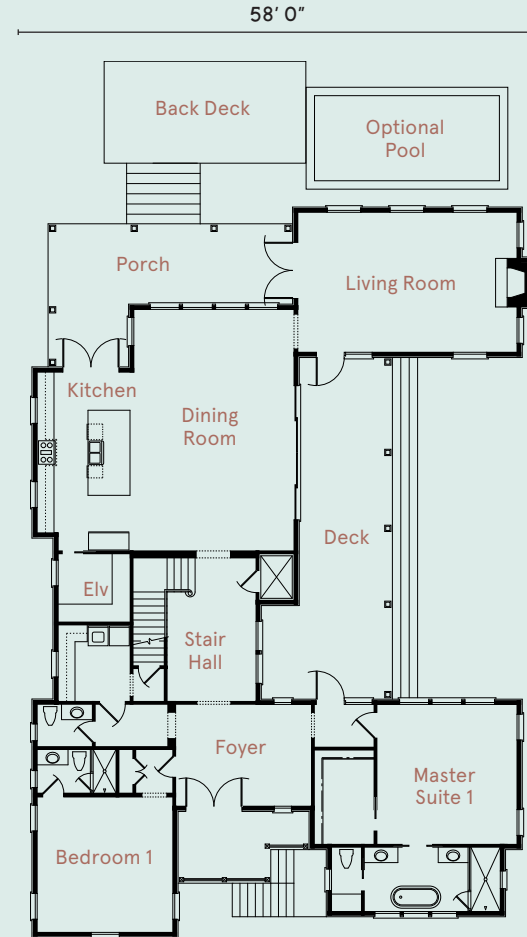
Living Room 17' x 26'
Deck 41' x 11'
Kitchen 21' x 12'
Dining Room 29' x 19'
Porch 9' x 29'
Back Deck 24' x 12'
Stair Hall 17' x 11'
Foyer 12' x 16'
Bedroom 1 16' x 16'
Master Suite 1 17' x 17'

SECOND FLOOR

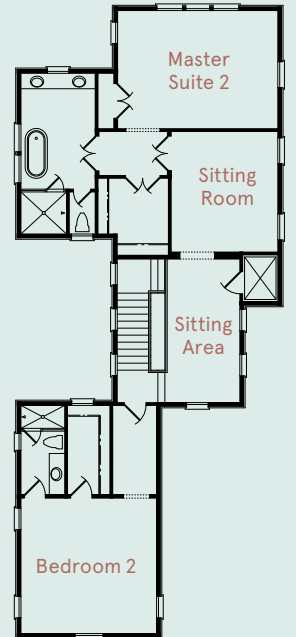
Master Suite 2 14' x 19'
Bedroom 2 16' x 16'
Sitting Room 14' x 13'
Sitting Area 17' x 9'

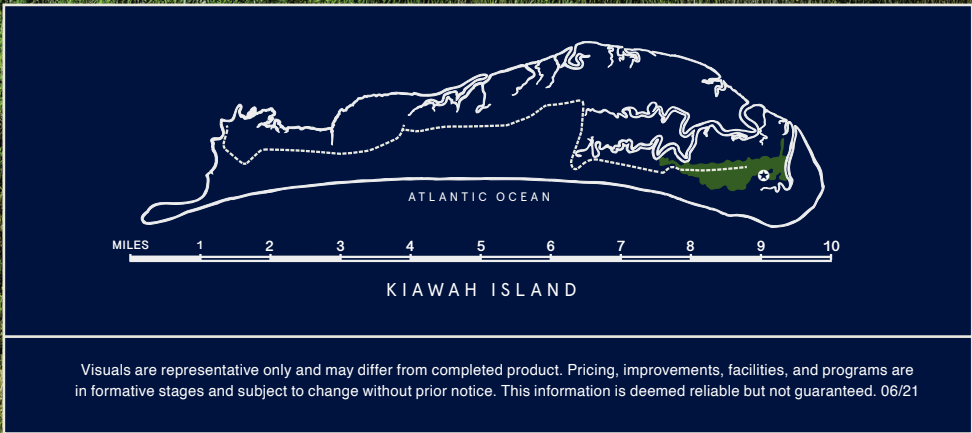


FIRST FLOOR



SECOND FLOOR





Visuals are representative only and may differ from completed product. Pricing, improvements, facilities, and programs are in formative stages and subject to change without prior notice. This information is deemed reliable but not guaranteed. 06/21