



HEATHER WILSON  
Heather A. Wilson,  
Architect

"I designed the Peregrine using simple but classic regional forms to embrace the remarkable topography of the site. The glassy central living room creates a connection between the courtyard entry and the private outdoor space, so the line between inside and out becomes blurred and the homeowner can be truly immersed in the environment. In all the living spaces, the architecture is about framing the views while quietly settling into the landscape."

# PEREGRINE

architect: Heather Wilson  
 landscape architects:  
 Sheila Wertimer & Cindy Cline  
 heated square feet: 3,202  
 total square feet: 3,962

## GROUND LEVEL

Porch 22' x 15'  
 Gear Stowage 14' x 12'

## FIRST FLOOR

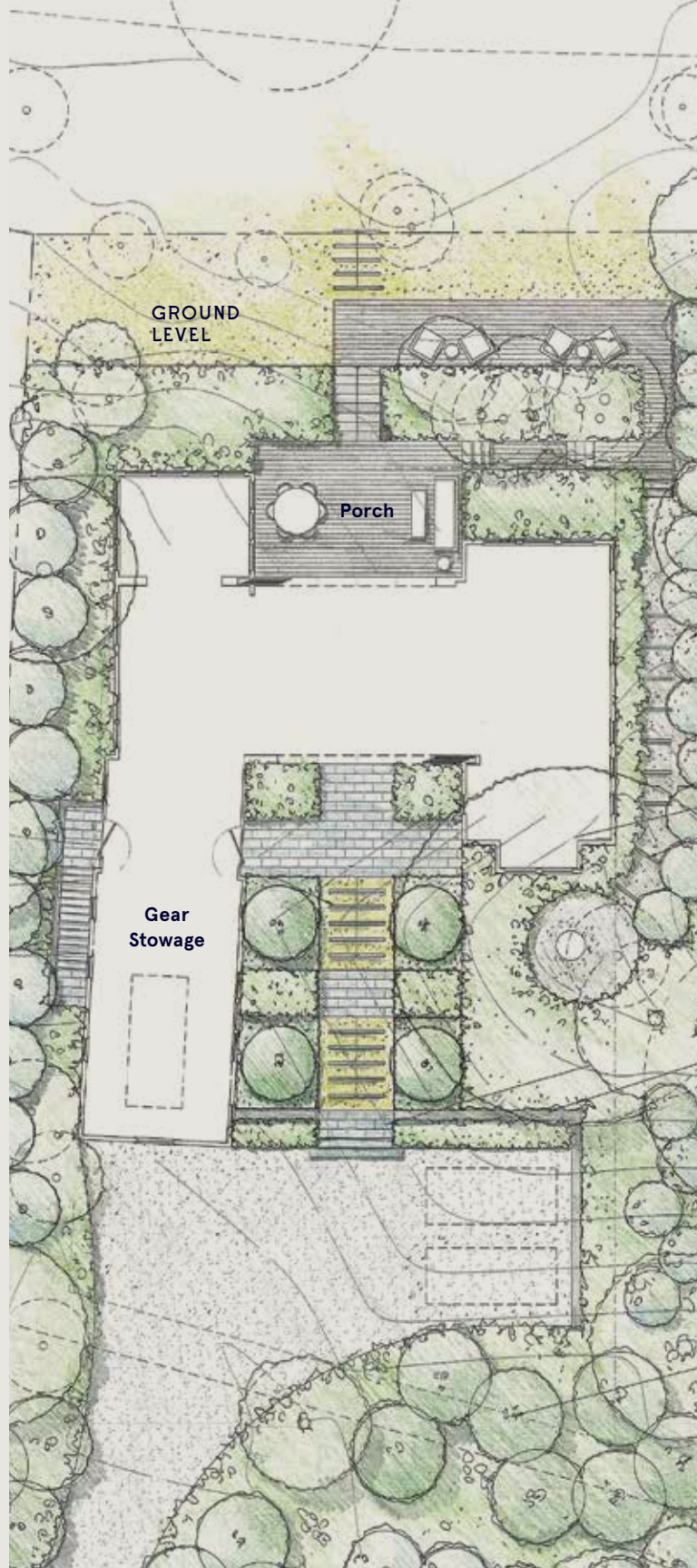
Foyer 15' x 12'  
 Kitchen 15' x 18'  
 Dining Room 14' x 11'  
 Living Room 21' x 17'  
 Master Bedroom 16' x 14'  
 Bedroom 2 16' x 13'

## SECOND FLOOR

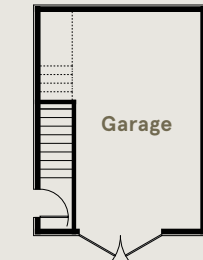
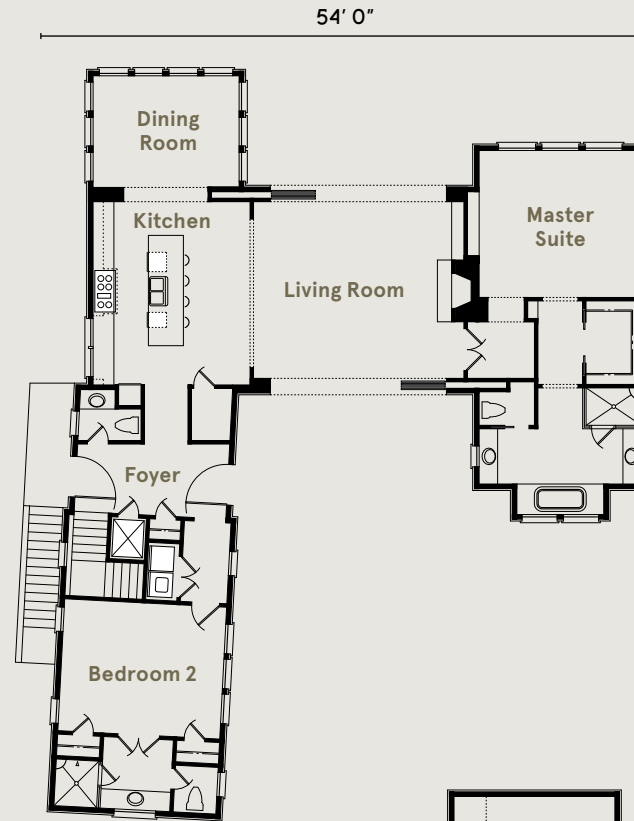
Bedroom 3 16' x 13'  
 Sitting Room 10' x 14'  
 Recreation Room 14' x 13'  
 Deck 14' x 11'

## GARAGE (optional)

(Garage) 16' x 21'  
 (Guest Room) 16' x 12'

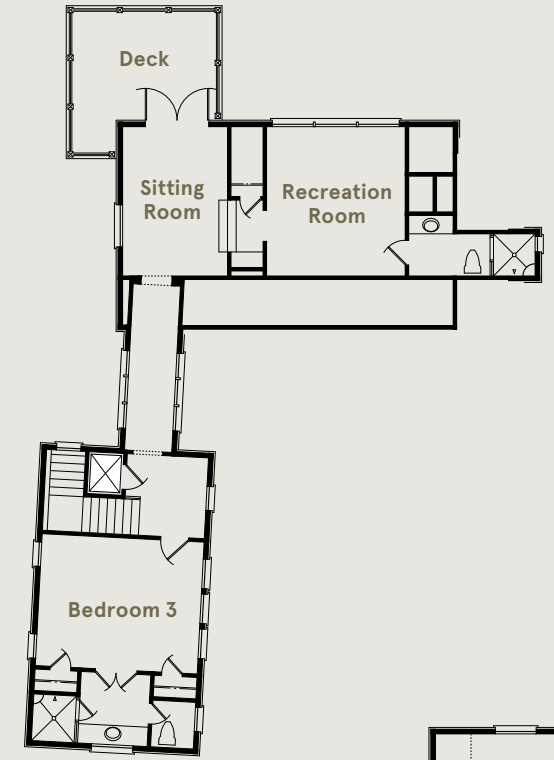


## FIRST FLOOR



OPTIONAL GARAGE  
first floor

## SECOND FLOOR



OPTIONAL GARAGE  
second floor