

HIGH MARSH



A masterfully designed transparent bridge connects two sides of the home. Within it, a spacious living area extends between a kitchen/dining wing and a bedroom wing. Upstairs, directly above the bridge, a gracious roof terrace showcases the magnificent surrounding vistas.

HIGH MARSH

architect: Jim Thomas

landscape architects:

Sheila Wertimer & Cindy Cline

heated square feet: 3,968

total square feet: 5,039

GROUND LEVEL

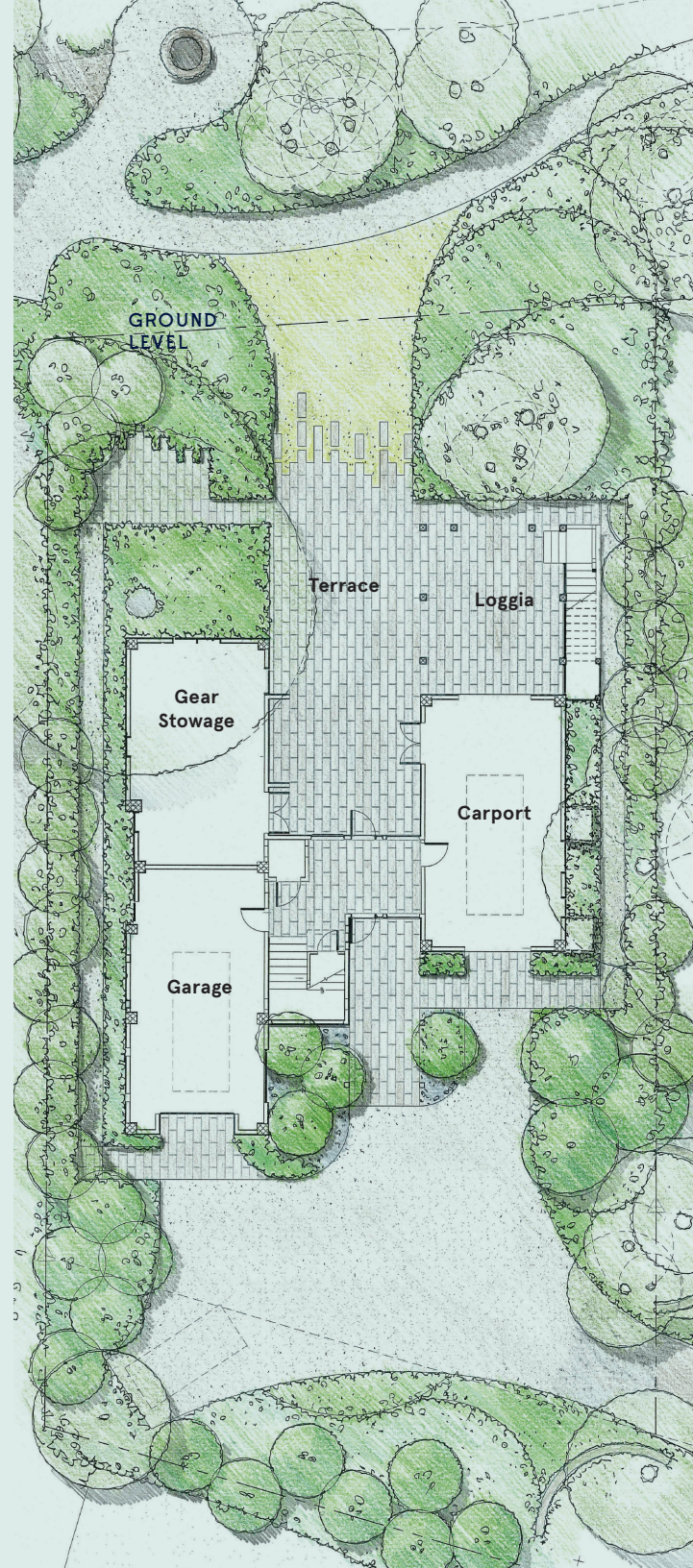
Garage	16' x 32'
Gear Stowage	16' x 27'
Carport	16' x 30'
Terrace	18' x 24'
Loggia	17' x 20'

FIRST FLOOR

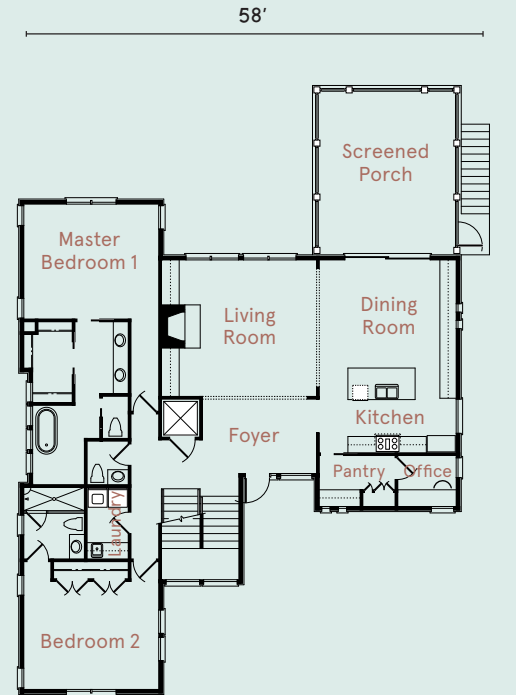
Foyer	14' x 10'
Living Room	19' x 17'
Dining Room	13' x 17'
Kitchen	17' x 10'
Pantry	9' x 6'
Office	7' x 6'
Screened Porch	17' x 20'
Master Bedroom 1	16' x 14'
Bedroom 2	16' x 14'

SECOND FLOOR

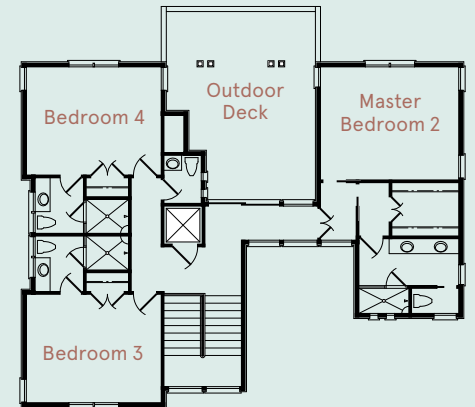
Bedroom 3	16' x 14'
Bedroom 4	16' x 14'
Outdoor Deck	17' x 23'
Master Bedroom 2	17' x 14'

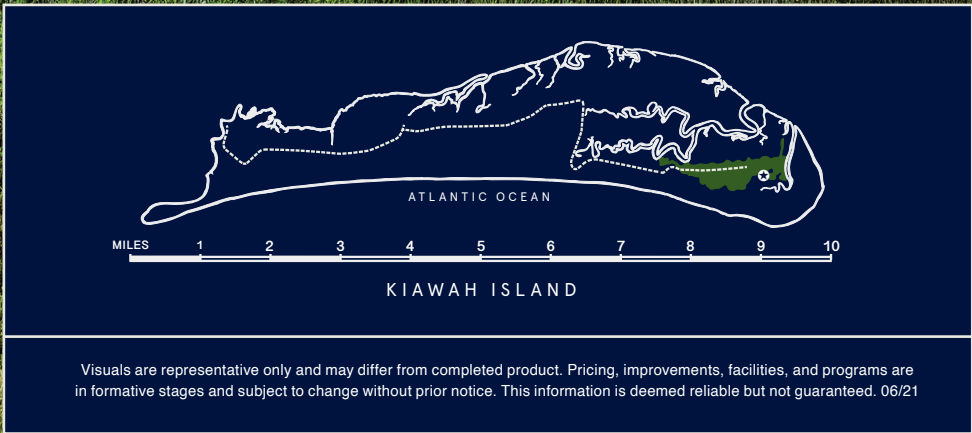


FIRST FLOOR



SECOND FLOOR





Visuals are representative only and may differ from completed product. Pricing, improvements, facilities, and programs are in formative stages and subject to change without prior notice. This information is deemed reliable but not guaranteed. 06/21

Marsh Walk
OCEAN PARK