



Chinaberry's flowing, open floor plan is designed for entertaining. A gracious wraparound porch promises family and friends exquisite marsh and courtyard views. And the masterful courtyard layout connects interior and exterior with a vast expanse of glass. Additionally, a master suite on the main level features a private balcony opening onto a courtyard while a second master upstairs frames inspiring views of the surrounding marsh.

CHINABERRY

architect: Heather Wilson

landscape architect: Josh Dunn

heated square feet: 3,939

total square feet: 4,742

GROUND LEVEL

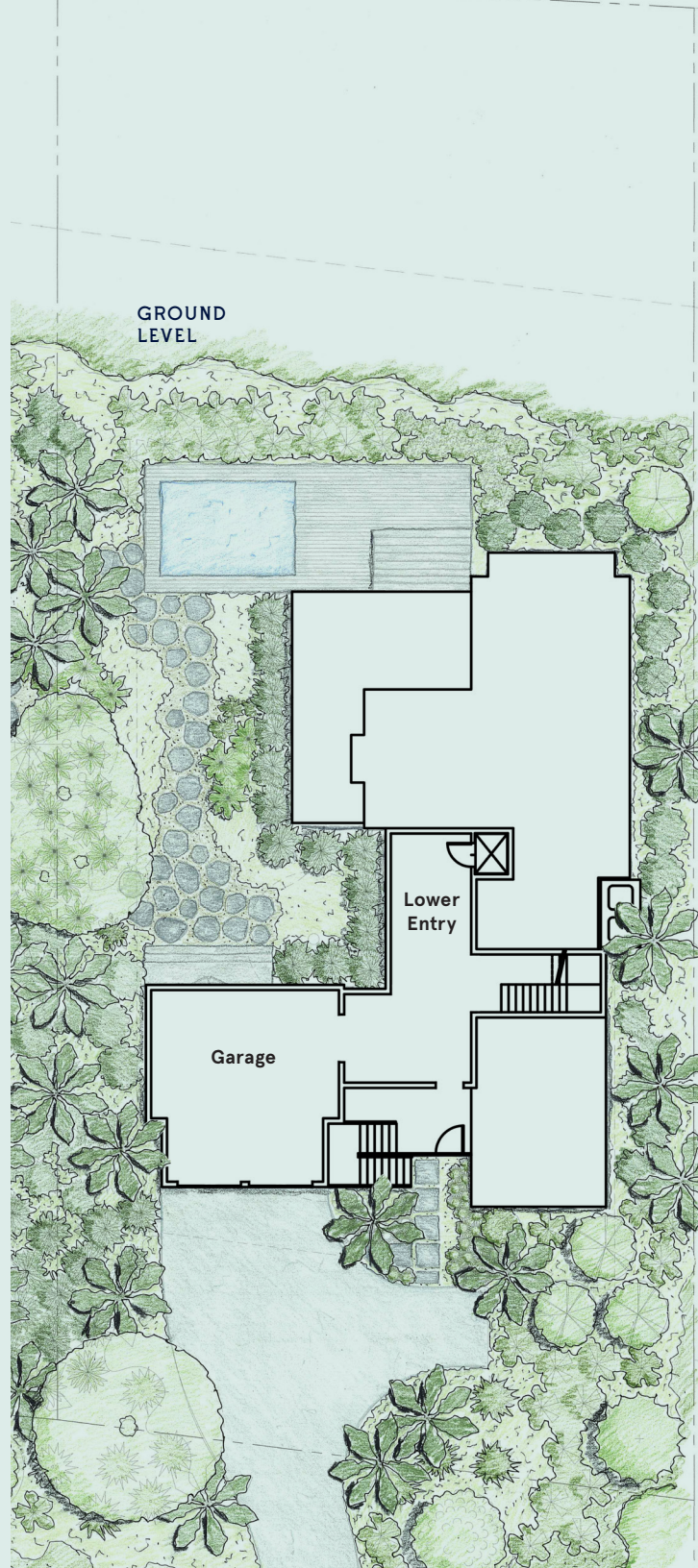
Garage 25' x 25'
 Lower Entry 10' x 30'

FIRST FLOOR

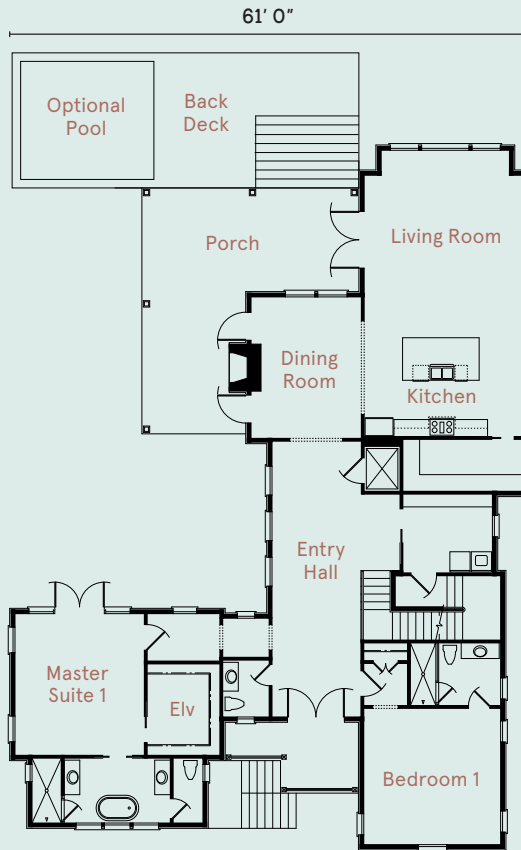
Living Room 22' x 19'
 Kitchen 12' x 19'
 Dining Room 17' x 13'
 Master Suite 1 16' x 16'
 Bedroom 1 17' x 15'
 Entry Hall 32' x 15'
 Porch 28' x 26'
 Back Deck 22' x 16'

SECOND FLOOR

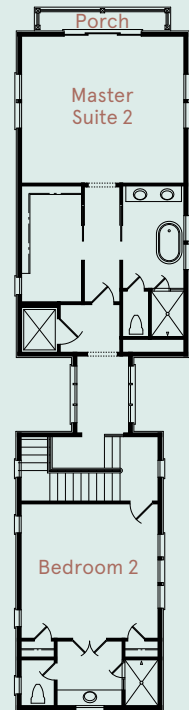
Master Suite 2 17' x 19'
 Bedroom 2 16' x 16'
 Porch 3' x 15'

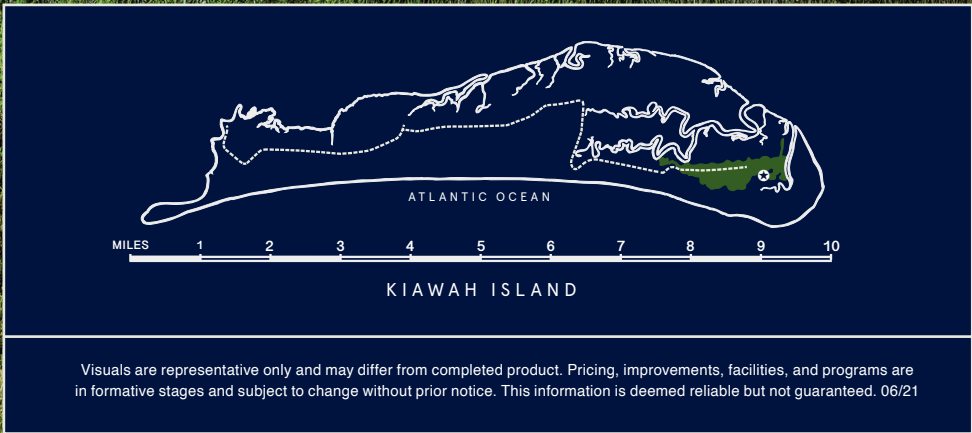


FIRST FLOOR



SECOND FLOOR





Marsh Walk
OCEAN PARK

Visuals are representative only and may differ from completed product. Pricing, improvements, facilities, and programs are in formative stages and subject to change without prior notice. This information is deemed reliable but not guaranteed. 06/21