



CADRE HARMONISÉ







IPC 
Integrated Food Security Phase Classification
Evidence and Standards for Better Food Security and Nutrition Decisions





THE CH-IPC PARTNERSHIP

Enhanced Comparability for Greater Coverage

OBJECTIVES

-  Harmonization of CH and IPC protocols
-  Comparable processes
-  Cross-learning
-  Greater coverage: 43 countries (18 by the CH and 25 by the IPC)

ACHIEVEMENTS

-  Launch of harmonized CH Technical Manual Version 2.0 and IPC Technical Manual Version 3.0
-  CH analyses published on the IPC website

GOVERNANCE & PARTNERSHIP

Both the CH and the IPC are multi-partner initiatives with many common partners including Action Against Hunger, CILSS, FAO, FEWS NET, the Joint Research Centre of the European Commission (JRC), Oxfam, Save the Children, UNICEF and WFP. Similarly to the IPC, the Cadre Harmonisé aims to inform decision makers and guide action and response within the Region. Both the CH and IPC are guided by Steering Committees and supported by technical bodies, with mutual representation in both initiatives.

CONTEXT

Since 1999, the Permanent Interstate Committee for Drought Control in the Sahel (*Comité permanent Inter-Etats de Lutte contre la Sécheresse dans le Sahel*, CILSS) along with ECOWAS, UEMOA, United Nations agencies (FAO, WFP and UNICEF), non-governmental organizations (Action Against Hunger, IFRC, Oxfam and Save the Children) and other international organisations such as FEWS NET, JRC and the *Réseau Billital Maroobé* (RBM), have been engaged in the development and implementation of the *Cadre Harmonisé* for the analysis and identification of areas at risk and populations affected by food and nutrition insecurity in the Sahel and West Africa.

Within national and regional food crisis prevention and management systems, the *Cadre Harmonisé* (CH) is a comprehensive analytical framework that takes into account various indicators of food and nutrition security outcomes and the inference of contributing factors. In addition, the CH improves the understanding of concepts, enhances the process for estimating vulnerable populations, and strengthens the framework for synergy among local agents in different countries and at regional level for more effective food crisis management. Using the CH helps strengthen the technical skills of national officials and other actors in multidimensional analyses of food and nutrition security. Similarly to the Integrated Food Security Phase Classification (IPC), the strength of the CH is to rely on the existing food security and nutrition information systems already in place in most Sahel countries since 1985, and in other coastal countries of West Africa.

Based on a joint roadmap developed in 2017 and updated annually, CH and IPC partners have strengthened their collaboration and pursued cross-learning and mutual support in various areas of work, including technical development, capacity development, roll-out of Acute Malnutrition analyses, quality assurance and communication. Enhanced collaboration for the technical development of tools and procedures has led to increased similarities and convergence between the initiatives. These efforts have resulted in comparable analysis findings in more than 40 countries (i.e. 18 countries using the CH scale and 25 countries using the IPC).

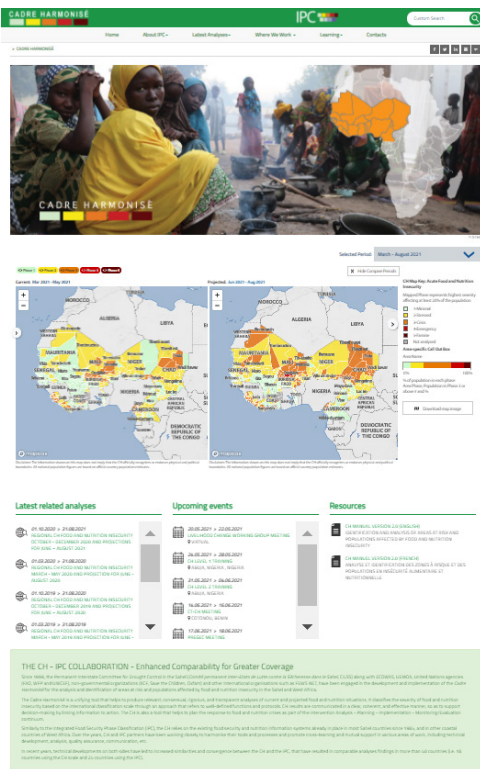
PUBLISHING CH ANALYSES ON THE IPC WEBSITE

In its continued endeavour to make food insecurity data as accessible as possible, in 2020, the IPC initiative launched a tool that would help users visualise, customise and download maps and data of countries covered by the IPC. This year, the IPC is publishing the data from CH analyses on the IPC mapping tool, increasing the number of countries covered from 25 to 43.

All information is freely available online at www.ipcinfo.org, featuring the latest food security data hosted in an open databank. Anyone can access the data and use it for their own analysis and decisions needs.

ACCESSING CADRE HARMONISE MAPS FROM THE IPC WEBSITE

The Cadre Harmonise maps can be accessed from the IPC website's homepage, which links to a page that has been especially set up for the CH's analyses: <http://www.ipcinfo.org/ch>. Here, one can visualise, customise and download maps, as well as access the CH's calendar of events, analysis reports and technical manual.



VISUALISE

Visualise food security maps on the tool for both the current and the projected period in a single interface. Hover your mouse over the area you are seeking data for to see the number of people facing high levels of acute food insecurity (CH Phase 3 or above).

CUSTOMISE

The mapping tool allows you to tailor your map by CH Phase through the buttons on the top left-hand corner. You can compare maps for both the current and projected periods or switch to one period or the other by clicking on the 'Hide Compare' button on the top right-hand corner. Using the arrow on the left-hand side of the tool, you can also customise elements of the maps, mainly size of country and analysis area labels, settlement points and CH Phase boundaries.

DOWNLOAD

Once you have visualised and customised the map you seek, the mapping tool allows you to download maps in "Portable Graphics Format" or PNG format.

For feedback and clarifications, please reach us on ipc@fao.org. For more information on CH data, please refer to the CILSS website.

CH Global Partners



CH Funding Partners



IPC Global Partners



IPC Funding Partners

