

A group of young girls in a classroom, some holding up their hands and others reading books. The girls are wearing headscarves and are looking towards the camera. The background shows a classroom setting with a wooden ceiling and other students.

**DEFENDING
OUR VALUES**
ANNUAL
REPORT 2018

**HUMAN
RIGHTS
WATCH**

People gather outside the Eloy Detention Center in Arizona to defend immigrant rights. In December 2017, Human Rights Watch reported on the devastating impact of new US deportation policies. Advocacy by rights groups, including Human Rights Watch, contributed to Congress passing new measures to increase public information about immigration detention operations.
© 2017 Max Herman/NurPhoto via Getty Images

HUMAN
RIGHTS
WATCH



ANNUAL REPORT 2018

Dear Friends,

In 2018, Human Rights Watch celebrates 40 years as an organization, while the Universal Declaration of Human Rights turns 70. But this year of anniversaries is hardly a moment for complacency. Hard-won progress is being eroded as populist leaders demonize vulnerable minorities, promote discrimination and hate, and once in power, seek to undermine the checks and balances on their power.

Yet we have found time and again that with your help we can resist and turn back these anti-democratic forces. Human Rights Watch is proud to play a leading role in a strong and emboldened global movement that is fighting to protect human rights and defend the principles that underpin them.

Our success today requires that we enlist innovative tools to expose abuse and engage the public and policymakers. When governments try to hide their atrocities by barring access for our researchers, we can deploy satellite imagery and other remote sensing tools, alongside our traditional refugee testimony, to overcome their obstructionism.

For example, when the Burmese military ethnically cleansed the Rohingya population, forcing 700,000 refugees to Bangladesh, and denied their accounts of murder, rape and arson,

we corroborated their testimony with satellite imagery to show the burning of some 350 Rohingya villages. Our evidence was broadcast worldwide. We rallied a powerful response, including targeted sanctions against Burmese military commanders and the initiation of a new United Nations mechanism to collect evidence and build cases for future prosecutions.

It is critically important in the current climate that we expand public support for human rights values. We must reach not just audiences already committed to our cause, but those that can be persuaded by our message. New digital tools are helping us to be heard, and to make a persuasive case, amid the clamor of competition for attention.

In these difficult times, we need your partnership. Our movement depends on like-minded people who value a world built on truth, justice, and equality. Together, we can overcome our adversaries and safeguard our shared values.

Thank you for standing with us to confront today's challenges.


Hassan Elmasry
Board Co-Chair


Bob Kissane
Board Co-Chair


Kenneth Roth
Executive Director



HOW WE WORK INVESTIGATE EXPOSE CHANGE

**For 40 years,
Human Rights Watch
has defended people
at risk of abuse.**

We practice a powerful, proven methodology: **investigate** abuses scrupulously, **expose** the facts widely, and relentlessly press those in power for **change** that respects rights.

Yulia Gorbunova, Europe and Central Asia researcher, inspects the remains of a destroyed school in eastern Ukraine. In October 2017, following years of our research and advocacy in Ukraine to protect children's education and schools from attack and military use, Ukrainian officials announced support for the international Safe Schools Declaration. © 2015 Human Rights Watch



Abdul Joynal Haoulader from Bangladesh's Balia village has been suffering from arsenic-related health conditions for some 20 years. Human Rights Watch's investigations of polluted drinking water in Bangladesh as a right-to-health issue helped move the government to commit to fixing some 5,000 arsenic-contaminated wells. © 2016 Atish Saha for Human Rights Watch

HOW WE WORK INVESTIGATE EXPOSE CHANGE

We are expert investigators.

Deep and careful research lies at the core of our ability to influence public debate and champion human rights. We stake our credibility on the facts we report, devoting great effort to ensuring the accuracy and fairness of every word we publish. Our researchers go to the site of human rights violations to interview victims and witnesses, to examine physical evidence, to identify those responsible, and to develop the most effective interventions.



Protesters in Manila hold candles as they call for an end to drug-related summary executions in the Philippines. Human Rights Watch found that President Rodrigo Duterte's murderous "war on drugs" against suspected users and dealers is effectively a war on the poor that could amount to crimes against humanity. © 2017 Jes Aznar/Getty Images

HOW WE WORK INVESTIGATE EXPOSE CHANGE

We are effective communicators.

Human Rights Watch exposes wrongdoing through all available media, often as events unfold. We empower victims to tell their stories and be heard. Personal accounts of suffering, infused with humanity and urgency, are often the key to overcome complacency and compel positive action.



Demonstrators welcome Chile's move to lift the country's strict abortion ban. Human Rights Watch joined in advocacy with local groups to end the ban. © 2016 REUTERS/Rodrigo Garrido

CHANGE

EXPOSE

INVESTIGATE

HOW WE WORK

We are determined advocates.

Our ability to access policymakers and influence the public, while offering concrete ways to stem violations, often secures results. Regularly backed by strong media coverage, we meet face-to-face with those who have the power to act on the realistic steps we recommend. Combining our watertight investigations with human stories of the consequence of abuse is a proven formula to secure improvements.



What Our People Do

Frontline investigations by expert researchers lie at the heart of Human Rights Watch's work.

Our researchers examine situations in some 90 countries around the world. They function as investigators, journalists, and advocates.

Mausi Segun (right), Africa executive director, interviews a witness to abuses in a camp for displaced persons in Maiduguri, Nigeria. Our research revealed that women and girls displaced by the Boko Haram conflict suffer sexual abuse and exploitation by security forces and other government officials. © 2015 Human Rights Watch



Being on the front line

Leidy Cordova, 37, with four of her five children at their home in Cumana, Venezuela, June 16, 2016. Their broken refrigerator held the only food in the house: a bag of corn flour and a bottle of vinegar. © 2016 Meredith Kohut

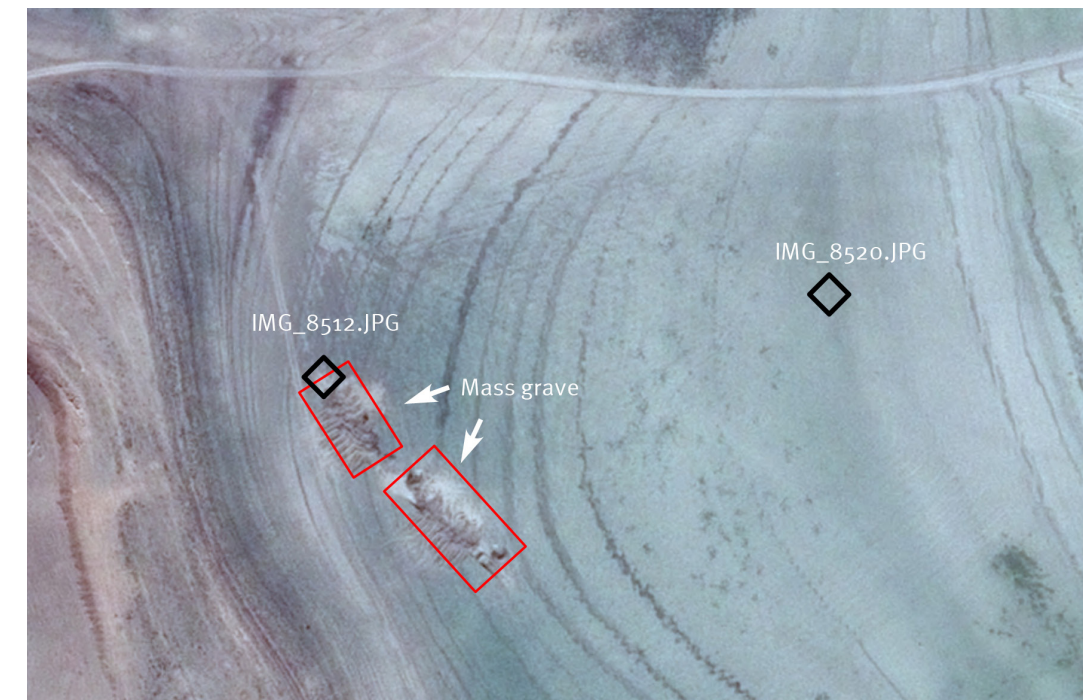
Our researchers go to the scene of atrocities to interview victims, witnesses, local activists, and government officials. They gather credible, first-hand information, whether in war zones, sites of repression, or other hostile environments.

Checking and cross-checking facts

Our researchers visit victims and witnesses wherever they can be reached, including refugee camps and prisons. They examine records and data from hospitals, morgues, courts, and the military. They use photos, video, forensic tools, statistical analysis, and satellite imagery—everything they can to piece together as complete and accurate a picture as possible.

Top: A satellite image shows digging activity near Bardiya, Iraq. Through video and satellite imagery analysis, Human Rights Watch discovered a mass grave and evidence of mass executions in Iraq. © CNES 2018 - Airbus DS 2018

Bottom: “Standing here, I can actually smell the stench of bodies underneath the ground.” Senior Iraq researcher, Belkis Wille, at the site of a mass grave in Iraq that Human Rights Watch located through satellite imagery analysis. © 2018 Human Rights Watch



Partnering with local activists and human rights groups

Our researchers immerse themselves in the communities where they work. They often live in-country, speak local languages, and partner with domestic organizations. They build networks of trust that can be relied on in a crisis to guide us in safely gathering reliable facts. They help to ensure that the concerns of local groups are heard by those with the power to make a difference.



Exposing evidence of abuses



Wangu Kanja, who launched a foundation to support survivors of sexual violence in Kenya. In partnership with her foundation and other local groups, Human Rights Watch raised the alarm about widespread sexual violence during Kenya's 2017 elections. © 2017 YASUYOSHI CHIBA/AFP/Getty Images



Our researchers shine a spotlight on wrongdoing by writing reports, news releases, and opinion pieces, supplemented by original photographs and video. We distribute these materials through traditional and social media to shape public debate and to ensure that policymakers learn of our findings and feel pressure to heed our recommendations for change.

Top: La Win, a 61-year-old farmer from Myanmar, said a company seized his 35 acres of land in 2004. He received no compensation and filed numerous claims to no avail. The impact of land confiscation on farmers in Myanmar rarely makes headlines. In reports in 2017 and 2018, Human Rights Watch exposed this issue and pushed for reforms to protect the rights of small landowners like La Win. © 2017 Patrick Brown for Human Rights Watch

Bottom: Phil Robertson, deputy Asia director at Human Rights Watch, at a press briefing in Yangon, Myanmar discussing the impact of land confiscation on small farmers. © 2018 AP Photo/Thein Zaw

Convincing key decision-makers to act

Our researchers share their findings not only with the target government but also with other governments and international institutions with clout. We ask (and sometimes demand) that they use their influence to help curb human rights abuses.

Top: Joined by Human Rights Watch researcher Margaret Wurth (left), two former child farm workers (right) recount their experiences harvesting tobacco in North Carolina at a congressional briefing in Washington, DC. Following Human Rights Watch's groundbreaking report highlighting the risks of child labor in US tobacco fields, most of the world's largest tobacco companies explicitly banned children under 18 from handling green tobacco. © 2014 Chip Somodevilla/Getty Images

Bottom: A woman picks cotton during the 2015 cotton harvest in Uzbekistan. Three months after Human Rights Watch reported on forced labor in Uzbekistan's cotton sector, the World Bank president, citing our data, met with the Uzbek president. The president then instructed his government to act, and within days, an estimated 200,000 people were released from forced labor. © 2015 Simon Buxton/Anti-Slavery International



Omar Shakir, Israel and Palestine director, in his office in the occupied West Bank. An Israeli court upheld in April 2019 a government order to deport Shakir over our human rights advocacy. International and local voices spoke out against Israel's measure to muzzle Human Rights Watch. We have appealed the decision to Israel's Supreme Court. © 2018 ABBAS MOMANI/AFP/Getty Images

Providing expertise

Our researchers respond to growing demands for on-the-ground, credible information from journalists, political leaders, and policymakers. Sometimes we share our work quietly, other times through the media, at government hearings, or even as expert witnesses in criminal trials.



A girl with an intellectual disability in India who was raped at age 13 by her brother's tutor. After her story was featured in our report and video, she received the compensation that was promised to her. The video also catalyzed compensation to 22 other survivors of sexual violence. © 2017 Abhishek Kumar Mehan/Human Rights Watch

Staying the course

Our researchers stay with an issue until they get results. They recognize that some problems are entrenched, and their solution requires long-term resolve.

“In dangerous times, in times of fear,
we must speak up for one another.”

Mausi Segun

Executive Director
Africa Division



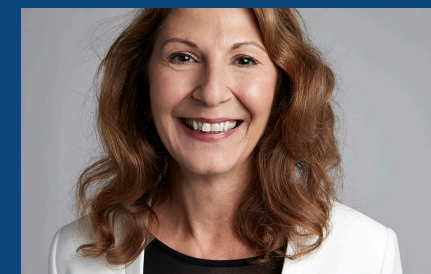
Girls study outdoors at their primary school in Migori county, western Kenya. © 2018 Smitta Sharma for Human Rights Watch

Thank You

Our organization and the human rights movement face immense challenges. Extremists demonize marginalized communities, reject women's rights, and return refugees to grave danger. But in this trying time, Human Rights Watch is determined to defend the fundamental values of justice, dignity, and equality on which human rights are based. Together with global partners, courageous activists, and donors, we continue to build on our 40 years of expertise to combat injustice worldwide.

Human Rights Watch is an independent, nongovernmental organization that does not accept any government funding. To conduct our work, we rely entirely on the generous contributions of our committed community of supporters, listed in the following pages.

Thank you for being a part of our cause.



Michele Alexander

Michele Alexander

Deputy Executive Director

Development & Global Initiatives

Hassan Elmasry
Co-Chair
Partner & Lead Portfolio Manager
Independent Franchise Partners, LLP

Robert Kissane
Co-Chair
Chairman
CCS

Michael G. Fisch
Vice Chair & Treasurer
President & Chief Executive Officer
American Securities, LLC

Oki Matsumoto
Vice Chair
Chairman & Chief Executive Officer
Monex Group, Inc.

Amy Rao
Vice Chair
Founder & Chief Executive Officer
Integrated Archive Systems

Amy Towers
Vice Chair
Founder
Nduna Foundation

Catherine Zennström
Vice Chair
Co-Founder
Zennström Philanthropies

Bruce Rabb
Secretary
Legal Adviser to Nonprofit Organizations

Karen Herskovitz Ackman
Landscape Architect

Akwasi Aidoo
Executive Director
TrustAfrica
Senior Fellow
Humanity United

Jorge Castañeda
Professor
New York University
Former Foreign Minister of Mexico

George Coelho
Founding Partner
Quadia Ventures

Natasha Dolby
Co-Founder
Freedom FWD

Kimberly Marteau Emerson
Principal
KME Consulting

Lawton Fitt
Investment Banker

Leslie Gilbert-Lurie
Writer, Lawyer, Human Rights Advocate

Paul Gray
Managing Director
Richard Gray Gallery

Caitlin Heising
Vice Chair
Heising-Simons Foundation

Susan Kane
Lawyer

Betsy Karel
Photographer
Chair
Trellis Fund

David Lakhdir
Partner
Paul, Weiss, Rifkind, Wharton
& Garrison LLP

Louisa Lee-Reizes
Luxury Brand Consultant

Alicia Miñana
Lawyer
Law Offices of Alicia Miñana

Joan R. Platt
Human Rights Activist

Neil Rimer
Co-Founder & General Partner
Index Ventures

Shelley Frost Rubin
Co-Founder
The Rubin Museum of Art

Ambassador Robin Sanders
FE3DS, LLC

Jean-Louis Servan-Schreiber
Editor & Publisher
CLÉS Magazines

Sidney Sheinberg
Partner
The Bubble Factory
Former Chief Operating Officer
MCA/Universal

Bruce Simpson
Director
McKinsey & Company

Joseph Skrzynski
Co-Chairman & Co-Founding Partner
CHAMP Private Equity

Donna Slaight
Human Rights Activist

Siri Stolt-Nielsen
Artist

Darian W. Swig
Human Rights Advocate
Founder & President
Article 3 Advisors

Makoto Takano
Chief Executive Officer
atomixmedia, inc.
Publisher & Editor-In-Chief
Forbes Japan

Marie M. Warburg
Director
US and German Friends of
the Jewish Museum
Director
Roland Berger Foundation
Director
ACLIREs Holding Ltd.

Board Members Emeriti

Joel Motley
Former Board Chair, 2013-2016
Managing Director
Public Capital Advisors, LLC

James F. Hoge, Jr.
Former Board Chair, 2010-2013
Former Editor
Foreign Affairs

Jane Olson
Former Board Chair, 2004-2010
Chair
Landmine Survivors
Network 1998-2010
Board Member
Pacific Council on
International Policy

Jonathan F. Fanton
Former Board Chair, 1998-2003
Former President
John D. and Catherine T.
MacArthur Foundation
Franklin D. Roosevelt
Visiting Fellow
Hunter College, CUNY

Robert L. Bernstein
Founding Chair, 1978-1998
Former Chairman & President,
1966-1990
Random House

Lisa Anderson
Former President
American University in Cairo

David M. Brown
Penobscot Management, LLC

William D. Carmichael
Human Rights Activist
Retired
Ford Foundation

Michael E. Gellert
General Partner
Windcrest Partners

Vartan Gregorian
President
Carnegie Corporation
of New York

Alice H. Henkin
Director Emerita, Justice and
Society Program
The Aspen Institute

Stephen L. Kass
Partner & Co-Director,
Environmental Practice Group
Carter, Ledyard & Milburn
Adjunct Professor of Law
Brooklyn Law School

Marina Pinto Kaufman
Human Rights Activist

Wendy Keys
Filmmaker
Former Executive Producer
of Programming
Film Society of Lincoln Center

Bruce J. Klatsky
Former Chair & Chief Executive
Officer
Phillips-Van Heusen

Joanne Leedom-Ackerman
Author
Vice President & Former
International Secretary
International PEN

Joshua Mailman
Joshua Mailman Foundation

Susan Manilow
Human Rights Activist

Samuel K. Murumba
Professor of Law
Brooklyn Law School

Peter Osnos
Founder & Editor at Large
PublicAffairs

Kathleen Peratis
Senior Partner
Outten and Golden

Sigrid Rausing
Sigrid Rausing Trust

Victoria Riskin
Human Rights Activist
Writer-Producer
Former President
Writers Guild of America

Kevin P. Ryan
Chairman and Founder
MongoDB, Zola, Workframe,
and Nomad Health

Orville Schell
Director
Center on US-China Relations
Asia Society
Former Dean of Graduate
School of Journalism
UC Berkeley

Gary Sick
Senior Research Scholar &
Adjunct Professor of Middle
East Politics
Columbia University

Malcolm B. Smith
Senior Consultant
General American
Investors Company, Inc.

John J. Studzinski CBE
Vice Chairman
Blackstone

Non-Board Members of Board Committees

Audit Committee

Richard W. Fields
Shari Leinwand
Richard M. Zuckerman

Communications Committee

Carroll Bogert
Theo Forbath
Jay Harris
David Keller
Edward Klaris
Andrew E. Lewin
Michael Moran
Jessica Morris
Lynn Povich
Deborah S. Ramo
Rica Rodman
Laura Silber
Peter Spielmann

Council Steering Committee

Cristina E. Bechtler
Elizabeth Cicchelli
Kristen Durkin
Barbara Fry Henchoz
Karen Roth
Adla El Sayegh
Pascaline Servan-Schreiber
Evelyne Sevin

Development and Outreach Committee

Janneke Dreesmann-
Beerkens
Marty Krasney
Margo O'Brien

Investment Committee

Todd Corbin
William von Mueffling
Isabelle de Wismes

Policy Committee

Fareda Banda
Philip Bentley
Paul Chevigny
Lori Damrosch
Gara LaMarche
William F. Mahoney
Minna Schrag
Steven R. Shapiro
Domna Stanton

The Legacies for Justice Society recognizes and thanks supporters who have made estate plans or established life-income gifts to benefit Human Rights Watch. Membership in the Legacies for Justice Society is bestowed without regard to gift level, as each commitment represents a lifetime pledge to Human Rights Watch that expresses both the desire for a world that is just and the future of what is possible through philanthropy.

Robert and Kerstin Adams
Frances Beatty Adler
Kathleen L. Agena
Joy and Jon Alferness
Nelson Almodovar
Freddy Andrade
Anonymous (58)
Linda Artiaga
María Lúcia Bateza
Donna Batson
Katherine Beckman
Kathleen Begala and
Yves-André Istel
Carol Bellamy
Miriam Ben-Shalom
Douglas J. Bender
Donna Bergman
Miriam Berkley
Jeremy Best
Christine Blackburn
Patricia A. Blackmore
Jill Blaske
Carroll Bogert
Elijah Bowen
Michele Bo Bramsen
Betty Brendel
Linda K. Brooks
Sondra Brooks
Gary Brown
Grace Brown
Melvin and Muriel Brownstein
Robert Buesing
Kenneth H. Burrows
Edgar Cardenas
Jim Case
Ketlen Celestin
Ilan Chachami
Tsun Wa Chan
Fandra Chang
Jessalyne L. Charles
Naina Chhotalal
Genie S. and A. Niel
Christiansen
Diana and Simon Clark
Mary C. Clarke
Fay Clayton
George Coelho and
Margo O'Brien
Warren I. Cohen
Rob and Mary Anne Cook
Mary Cottrell
Patricia Cravens
Barbara Crook
Cheney Crow
Adam Cabbage
John A. Cushing
Nancy Cushing-Jones
Alice Dahle

Gilbert and Patricia Davis
Nancy Davis and
Robert Robinson
Barbara W. Deméré
Karen DeMoss and
Steve Preskill
John A. Dickinson
Kathryn A. Donahoe
Philip Dorrington
Michael A. Draper
Sally Dricks
Carol F. Drisko
Ellen Carol DuBois
Jimmy Dunne
Mary Ann Eddy
Peter Ehrenhaus
Edward Eitches
Kimberly Marteau and
John Emerson
Lisbeth Eng
Wilemina Esenwein
Helen L. Evans
Jean-Claude Faby
David L. Fain
Jonathan F. and Cynthia
G. Fanton
Donald and Martha Farley
Louise Farrell
Gemma Fastiggi
Nancy Fifer
Janet R. Fink
Edward and Marianne Fisher
Mary L. Flannery
Patricia and William
Flumenbaum
Jeffrey Fraenkel
Cynthia A. Freeman
Peter L. Freeman
Francis Frellick
Helen Fried
Robert G. Frieze
Robert and Virginia Gaines
Hali and Dorothy Giessler
Joan Gilford
Amelie Gille
Raymond G. Godshall
Cindy Goldberg
Jeffrey Goldstein
Jan V. Golinski
John Golovach
Elisabeth Grace
Gary Gralton
Josh Gravens
Ruth A. Green
Cheryl Greenberg
and Dan Lloyd
Jim and Zoe Griffith
Donald Guateri

Fred Guggenheim
Kato Guggenheim
Karen Guma
Cleó E. Hagen
Gregory Hall
Henry K. Hall
Larry Hall
Anne Hammond
Kathleen S. Hanold
Daniel A. Harris
Jasmine Herlt
Daniel Heuer and Meredith Jean
Harvey Hill
Christa Meyer Hinckley
Donna J. Horn
Robert Hungate
Alissa James
Sheldon Johnson
Dr. William M. and
Marlene E. Johnson
Amanda and Greg Jones
Carl Jones
Margaret S. Jones
Tineke Kalk
Jackie Kaplan-Perkins and
Ann Kaplan-Perkins
Cathy Kean
Elaine and Herbert Kendall
Laura Kerr and Gus Garmel
Carolyn Kidder
Jaleila King
Robert Kissane
Peter Klosterman
Wayne Klug
Kathleen Knepper
John Neugebauer
Philip Koenig
Dolly Koler
Michael Koutstaal
Marty Krasney
Stanley Krippner
Steve Kuo
Barbara Lachant
Lisa Lagar
Linda and David Lakhdhir
Kathryn Lass
Trella A. Laughlin
Jan Lecklikner
Jean Lecuyer
Kotik Lee
Sheila Leete
Paul F. and Eileen M. LeFort
Shari Leinwand
David Leon
Anne Loftis
George and Karen Longstreth
Jack Love
Terri Luchsinger

Carol Lutz
Dorothy J. MacKay
Elizabeth A. Mann
Monte R. Mansir
Carli Maranek
Stephanie Marin
Patricia Marlatt
Iliani Matisse
Oki Matumoto
Anne M. McEvoy
Cheryl and Sam McFarland
Amy McGranahan
Laura McIlhennon
Donald McKeating
Sherry Melchiore, Ph.D.
Matilda Melnick
Bernice Mennis
Caroline Ramsay Merriam
Susan F. Messinger
Sharon D. Metro
Susan E. Meyer
Barbara C. Meyers
Linda Miller
Polly U. Miller
William Morris
Sheila A. Mott
Colleen Murphy
Sharon Murphy
Miriam Muscarolas and
Grant Abramson
Hermine Muskat
Steven Nachman
Shirley T. Nelsen
Joseph M. Nelson
Julie Nelson
John Neugebauer
Peter P. Nghiem
Sheila M. Nitze
George R. Oleyer
Jane and Ron Olson
Noel G. Olson
Jean Oppenheimer
Jay Owens and Penny
J. Applegate
Morton D. Paley
Meline Papazian
David Parees
Elaine Paris
Noel E. Parmentel
Radha Patel
Anne and Nick Patterson
Curt F. Pawlisch
Ridvana and Crispin Perdue
Al A. Peuster
Marianne Phelan
Judith A. Pier
Sophie H. Pirie
Anne Powell

Ellen R. Price-Maloy
Stephen Prior
Bernice and Richard Rabin
Juliane Rael
Chris Ramberg
George Ramos
Amy Rao and Harry Plant
Bertram Raphael
Elizabeth J. Rappaport
Ingeborg Reichenbach
Michael A. Replogle
Jennifer Revicki
Roland Riemers
Victoria Riskin and
David W. Rintels
Bettina and Peter Rosenblatt
Clare S. Rosenfield
Donald J. Ross
Keith I. Ross
Pepi Ross
Elizabeth Rowell
Rochelle Rubinstein
Jillian Ruiz Duke
Fleming Rutledge
Stacy Ryals
Key S. Ryang
Melvyn A. Sacks
DeWitt Sage
R. A. Sanger
Anita Savio
Jerome Scanlan
William A. Scanlon
Alice Schaffer Smith
Anne Schifferle
James and Nancy Schumacher
Butch Schuman
Joseph E. Schwartzberg
Daniel J. Scott
Kevin Segall
Julie Segedy
Carol Selman
Miriam E. Sexton
Parichehr Sharifkashani
Lorraine and Sid Sheinberg
Fumiko Shido
Mark Shlim
Barbara Silberbusch
Carol and Arthur F. Silbergeld
Stephen M. Silberstein
Maury Silver
Brandy R. Sinco
Connie J. Smith
Patricia Smith
Josephine Sokolski
M. J. Sommer
Susan M. Spaven
Phyllis Springer
June C. Starck
Joyce L. Steier
James and Lorene Steinberg
Evelyn Stern
Leonard Sussman
James Sutton
Shari W. Swanson

Catherine A. Swilley
Mumen Tageldin
Earlene Thom
Lorraine Tillrock
Paul Vincelli
Heather M. Wade
M. Nawaz Wahla
Elizabeth M. Walsh
Ray Warner
David Watt
J. D. Wayman
Gila Wdowinski
Judith Wechsler
John C. Weiser
Daniel Weiss
Alicia White
Thomas J. White
Cheryl Wilfong
Jean Wilhelm
Raymond Will
Brian Williams
John Williamson
Ed and January Woods
Judith Yahna
Barbara Zaring and
Stephen J. Rose
Fred Zimmerman
Katie J. Zoglin
Joelle Adlerblum*
Cameron Ainsworth*
Roland Algrant*
Jerome A. Anderson*
Anonymous* (2)
Gregory Ashe*
Christina Asher*
Brenda Barca*
Sandra L. Bartky*
Barbara Baumgardner*
Sara B. Berenson*
Mitzi Bland*
Margaret C. Blaker*
Peter Blank*
Martin Blumenthal*
Gladys S. Borrus*
Sara Caroline Roth Branton*
Linda Chase Broda*
Richard J. Broderick*
Christopher W. Canino*
Franklin Chace*
Berenice Cohen*
Harry Cohen*
Isidore Cohen*
Judith H. Cohen*
Robert Coords*
Eugene Cotton*
Stuart P. Coxhead*
Mary Cross*
Thomas M. Dannenfelser*
Daniele Doctorow*
Richard E. Dwyer*
S.W. Ela*
Stanley Engelstein*
Albert Ertel*
Barbara D. Finberg*

Elsa First*
John Fludas*
David A. Ford*
Louise K. Gabel*
Sue Anne Gershenson*
Louis Gersten*
Jerome and Dolores
Zukerman Gewirtz*
Rebekah Gisnet and
Maurice Mandell*
Margaret B. Gloster*
Stuart Glucksman*
Thomas K. Goldstick*
Merrill Goldwyn*
Patricia Gordon*
Louise Hafen*
Lisa Hagstrand*
Michel Halpérin*
Dorothy Hammer*
Gloria Harootunian*
Philip R. Harper*
D. Heersink*
Helmut Friedrich Heetzsch*
Christopher L. Henley*
Dorothy S. Hines*
H. M. Wichers Hoeth*
Thomas S. Holman*
Alan D. Hunter*
Leah Ice*
Elgin Jenison*
Dorothy B. Jones*
Roy Kaufman*
Eve Kingsland*
Wendy Klodt*
Evelyn Knapp*
Dolly Koler*
Rose L. Kraft*
David P. Kramer*
Pamela Krasney*
Betty Kronskey*
Bernard Landis*
Ruth F. Lax*
Virginia Leary*
David and Norma Lewis*
George Lidback*
Helen Lieber*
Catherine Lynch*
Melissa Mathison*
Dorothy Parker Maloff*
Manfred McArthur*
Lyle McCormick*
Margot S. McInerney*
Jack Mezirow*
Clare Millikan*
Janet Mistroff*
James A. Mitchell*
Eleanore Moore*
Hadassah Brooks Morgan*
Elizabeth Nelson*
Susan K. Nelson*
Irene Nevil*
James A. Nieburger*
Arend C. van Noortwijk*
Verna Norman*

Margaret E. Oakley*
Joan Palevsky*
Janice Paneth*
Cissy Patterson*
Donald A. Pels*
Leroy H. Pelton*
Margaret Quinn*
John H. Randall*
Joyce Reed Rosenberg*
Ronald L. Rich*
Margaret L. Riley*
Melvin Ringel*
Kate Rinzler*
Merrill Goldwyn*
Richard S. Rosenkranz*
Marguerite Rosenthal*
Warren D. Samet*
R.A. Sanger*
Ann Schafer*
George M. Schauz*
Robert L. Schiesel*
Andreas von Schulthess*
Diane Serber*
Julie P. Shattuck*
Betty and Stanley K.
Sheinbaum*
Pat K. Shepard*
Abner Shimony*
Kent Shoemaker*
Albert L. Shostack*
Harriet J. Smith*
William Smith*
Margaret R. Spanel*
Allan J. Taylor*
Carl Terwilliger*
Anne E. Thomas*
Kenneth W. Toebe*
Jean M. Trubey*
James Tysoe*
Ronald A. Urquhart*
Sergio Valle*
Henry J. Vandenberg*
David Vickers*
Ann L. Walter*
Judith Weinstein*
Alma Weisberg*
Robert Wells*
Frances Werner*
Nathaniel Weyl*
Mardys Whiteman*
Irving N. Wolfson*
John P. Wood*
Carl B. Zuckerman*

* Denotes Legacies for Justice Society members who have passed away. We honor their memory.

Americas

Lloyd Axworthy, Chair
Marina Pinto Kaufman, Vice-Chair
 Roberto Alvarez
 Cynthia Arnson
 Marcelo Bronstein
 Paul Chevigny
 John Dinges
 Denise Dresser
 Nancy Englander
 Tom J. Farer
 Alejandro Garro
 Peter Hakim
 Ronald G. Hellman
 Stephen L. Kass
 Andrew Kaufman
 Susana Leval
 Kenneth Maxwell
 Jocelyn McCalla
 Bruce Rabb
 Michael Shifter
 George Soros
 Rose B. Styron
 Javier Timerman
 Horacio Verbitsky
 George Vickers
 Alex Wilde

Asia

David Lakhdhir, Chair
Orville Schell, Vice-Chair
 Maureen Aung-Thwin
 Edward J. Baker
 Robert L. Bernstein
 Jerome A. Cohen
 John Despres
 Mallika Dutt
 Kek Galabru
 Merle Goldman
 Jonathan Hecht
 Sharon Hom
 Rounaq Jahan
 Ayesha Jalal
 Robert G. James
 Joanne Leedom-Ackerman
 Perry Link
 Krishen Mehta
 Colleen Murphy
 Andrew J. Nathan
 Yuri Orlov
 Xiao Qiang
 Bruce Rabb
 Balakrishnan Rajagopal
 Ahmed Rashid
 Victoria Riskin
 James Scott
 Mark Sidel

Eric Stover
 Ko-Yung Tung
 Francesc Vendrell
 Tuong Vu

Children's Rights

Robert G. Schwartz, Chair
Bernardine Dohrn, Vice-Chair
 Goldie Alfasi-Siffert
 Ishmael Beah
 Mark A. Belsey
 Rachel Brett
 Pam Bruns
 Dana Burde
 Gilles Concordel
 Marie Concordel
 Joanne Csete
 Dina Said Dwyer
 Loubna Freih
 Judy Gaynor
 Michael Gibbons
 Leslie Gilbert-Lurie
 Alice H. Henkin
 Janet Kagan
 Rhoda Karpatkin
 Miriam Lyons
 Sarah Martin
 Joy Moser
 Elena Nightingale
 Bruce Rabb
 Dalia Said
 Elizabeth Scott
 Wendy S. Meyer
 Anne Studzinski
 Ramona Sunderwirth
 Tony Tate
 Veronica Yates

Disability Rights

Marca Bristo, Co-Chair
Connie Laurin-Bowie, Co-Chair
 Wendy Brooks
 Bhargavi Davar
 Katherine Fürstenberg-Raettig
 Caroline Greenhalgh
 Betsy Karel
 Jenny Nilsson
 Richard Quinn, Emeritus Member
 Bruce Rabb
 Amy Rao
 Kim Samuel
 Shalini Sharma
 Bruce Simpson
 Tracy Simpson
 John R. Taylor
 Michelle Yee
 Catherine Zennström

Environment and Human Rights

Susan M. Kath, Co-Chair
Daniel Magraw, Co-Chair
 Marcel Brenninkmeijer
 Ellen Dorsey
 Stephanie Farrior
 Anjali Nayar
 Victoria Riskin
 John Steed
 Catherine Zennström

Europe & Central Asia

Catherine Zennström, Chair
Jean-Paul Marthoz, Vice-Chair
 Henri J. Barkey
 Gerhart R. Baum
 Rudolf Bindig
 Alexander Cooley
 Stephen J. Del Rosso
 Kimberly Marteau Emerson
 Jonathan F. Fanton
 Felice Gaer
 Michael E. Gellert
 Mark von Hagen
 Alice H. Henkin
 Jeri Laber
 Masha Lipman
 Helena Luczywo
 William von Mueffling
 Glenda Nühn-Morris
 Jane Olson
 László J. Orsós
 Arjan Overwater
 Can Paker
 Lucy Pereira
 Yves Robert-Charrue
 Colette Shulman
 Leon Sigal
 Malcolm B. Smith
 Joanna Weschler
 Isabelle de Wismes
 Tana de Zulueta

Health & Human Rights

Victoria Riskin, Chair
 Chris Beyrer
 Scott Burris
 Allan Clear
 Kathleen Foley
 Françoise Girard
 Susan M. Kath
 Charles J. Lyons
 Daniel B. Magraw
 Darin Portnoy
 Hannah Skvarla
 John Steed
 Katherine Todrys

Lesbian, Gay, Bisexual
& Transgender Rights

Alice M. Miller, Co-Chair
Bruce Rabb, Co-Chair
 Stewart L. Adelson
 Tamara Adrián
 Ise Bosch
 Mauro I. Cabral
 Randall Chamberlain
 Daniel J. Costello
 Julie Dorf
 Susana Fried
 Matthew Hart
 Allison Jernow
 Pieter Ligthart
 Wanja Muguongo
 Sebastian Naidoo
 Arvind Narrain
 Andrew Park
 Graham Robeson
 Cynthia Rothschild
 Sid Sheinberg
 John R. Taylor
 Maxim Thorne
 Reid Williams
 Masakazu Yanagisawa

Middle East & North Africa

Asli Bâli, Co-Chair
Kathleen Peratis, Co-Chair
Bruce Rabb, Vice-Chair
Gary Sick, Vice-Chair
 Fouad Abdelmoumni
 Gamal Abou Ali
 Yasser Akkaoui
 Hala Al-Dosari
 Salah Al-Hejailan
 Abdul-Ghani Al-Iryani
 Ahmed Al-Mukhaini
 Ghanim Al-Najjar
 Lisa Anderson
 Shaul Bakhash
 David Bernstein
 Robert L. Bernstein
 Nathan Brown
 Paul Chevigny
 Hanaa Edwar
 Bahey El Din Hassan
 Hassan Elmasry
 Mansour Farhang
 Loubna Freih
 Aeyal M. Gross
 Amr Hamzawy
 Asos Hardi
 Shawan Jabarin
 Marina Pinto Kaufman
 Youssef Khlat

Marc Lynch
 Ahmed Mansoor
 Stephen P. Marks
 Abdelaziz Nouaydi
 Nabeel Rajab
 Victoria Riskin
 Charles Shamas
 Sid Sheinberg
 Sussan Tahmasebi
 Christophe Tanghe
 Mustapha Tlili

United States

Darian W. Swig, Chair
 Karen Herskovitz Ackman
 Elizabeth Cicchelli
 Kristen Durkin
 Carla Emil
 Will Fitzpatrick
 Glen Galaich
 Caitlin Heising
 Thomas Higgins
 Susan Kane
 David Keller
 Joel Motley
 Joan R. Platt
 Megan Quitkin
 Vicki Riskin

Women's Rights

Betsy Karel, Chair
Kathleen Peratis, Chair Emeritus
 Karen Herskovitz Ackman
 Mahnaz Afkhami
 Ellen Stone Belic
 Helen Bernstein
 David M. Brown
 Charlotte Bunch
 Ellen Chesler
 Nagin Cox
 Yasmine Ergas
 Lawton Fitt
 Judy Gaynor
 Kate Gellert
 Dedrea Gray
 Marina Pinto Kaufman
 Hollis Kurman
 Hillary Thomas Lake
 Lenora Lapidus
 Stephen Lewis
 Samuel Murumba
 Sylvia Neil
 Susan Osnos
 Lynn Povich
 Bruce Rabb
 Amy Rao
 Honorable Susan Rose

Pascaline Servan-Schreiber
 Lorraine Sheinberg
 Donna Slaight
 Domna Stanton
 Ellen Susman
 Rita Warner
 Sarah Zeid

Beirut Committee

Yasser Akkaoui, Chair
Lama Sioufi, Director
 Mohamed Alem
 Marc Audi
 Maria Audi
 Farid Chedid
 Youssef Dib
 Rami El-Nimer
 Ali Ghandour
 Marwan Kaddoura
 Emile Khoury
 Chadia El Meouchi
 Rima Nasser
 Jean Riachi
 Dalia Rishani

Belgium Committee

Janneke Dreesmann-Beerkens, Co-Chair
Christophe Tanghe, Co-Chair
Caroline Ceska, Senior Director
 Christophe d'Ansembourg
 Gina d'Ansembourg
 Fabienne Bertrand
 Luc Bertrand
 Clotilde Boël
 Harold Boël
 Axelle Cavens
 Dirk Cavens
 Christian Cigrang
 Cristina Cigrang
 Marc Dreesmann
 Michael J. Gardner
 Miene Gillion
 Philippe Gillion
 Jacques Halpérin
 Nancy Leysen
 Thomas Leysen
 Frank Monstrey
 Petra Noé
 Caroline de Spoelberch
 Rodolphe de Spoelberch
 Patricia Tanghe
 Alexandra Van Campenhout
 Xavier Van Campenhout
 Griet Vandendriessche
 Johan Vandendriessche
 Axel Vervoordt

Boris Vervoordt
 May Vervoordt

Berlin Committee

Louisa Lee-Reizes, Co-Chair
Melissa Schneider-Sickert, Co-Chair
Antonia Josten, Vice-Chair
Nesrin Thomsen, Director
 Edna Dumas
 Kimberly Marteau
 Emerson
 Tessa Fanelas
 Ursula Karven
 Carolina Mojto
 Margarete von Portatius
 Karen Roth
 Katrin Sandmann
 Clemens Schick
 Marie M. Warburg
 Jessica von Wrede

Canada Committee

Donna Slaight, Canada Chair
Jacques Frémont, Ottawa Chair
Susan Guichon, Vice-Chair
Michelle Meneley, Vice-Chair
Brenda Dinnick, Founding Co-Chair
Wendy Keys, Founding Co-Chair
Helga Stephenson, Founding Co-Chair
Jasmine Herlt, Managing Director
Farida Deif, Director
Alison Thornton, Associate Director
 Suresh Bhalla
 Lindsay Blakely
 Beth Burgess
 Matt Cammaert
 Amanda Carling
 Sean Carter
 Meredith Cartwright
 Michael Charles
 Deane Collinson
 Judy Collinson
 Kathryn Cottingham

Paul Dewar
 Sarah Dinnick
 Jennifer Eggsgard
 Helen Graham
 Daniel Guttman
 Nancy Hamm
 Donna Ivey
 Mary Johnston
 Raja Khouri
 Elizabeth Levitt
 Louise Levitt
 Sheena Macdonald
 Michael MacMillan
 Renu Mandhane
 Margaret McCuaig-Johnston
 Judy McLean
 Warda Shazadi Meighen
 Errol Mendes
 Sarah Milroy
 Lyndsay Morrison
 Samer Muscati
 John F. Packer
 Jennifer Pagnutti
 Lucie Pal
 Erna Paris
 Penny Pepperell
 Robert Peterson
 Chip Pitfield
 Andrea Russell
 Caitlin Sainsbury
 Kim Samuel
 Vinay Sarin
 Bruce Simpson
 Heather Spinks

Chicago Committee

Terri Abruzzo, Co-Chair
Shalini Sharma, Co-Chair
Judy Gaynor, Founding Co-Chair
Susan Manilow, Founding Co-Chair
William F. Mahoney, Chair Emeritus
Ellen Alberding, Chair Emerita
Margaret Duncan, Chair Emerita
Carolyn Grisko, Chair Emerita
Grace Newton, Chair Emerita
Elizabeth Cicchelli, Co-Chair Emerita

Dedrea Gray, Co-Chair Emerita
Jackie Kaplan-Perkins, Director
 Lucy Ascoli
 Jeanne Atkinson
 Edgar H. Bachrach
 Austin Baidas
 Snjezana Barrack
 Ellen Stone Belic
 Marjorie Benton
 Susan Berkowitz
 Ryan Blitstein
 David K. Callahan
 Russell Cass
 Fay Clayton
 Mitchell Cobey
 Linda Burns Coleman
 Howard R. Conant, Jr.
 Dolores Connolly
 Judy Cottle
 Susan Crown
 Karen C. Ehlers
 Janice Feinberg
 Mimi Frankel
 Maya Friedler
 Clare Gallagher
 Kevin Gallagher
 Julia Harris Garg
 Jill Garling
 Monica George
 Paul Gray
 Susan Gzesh
 Terence Halliday
 Tracy Hannan
 Anne Geraghty Helms
 Rhona Hoffman
 Monica Lee Hughson
 Paul Ingersoll
 Deone Jackman
 Mike Koldyke
 Missy D. Lavender
 John A. Lee
 Liz K. Lefkofsky
 Julie Lepri
 Rosemarie Lizarraga
 Rakesh Madhava
 Amalia Mahoney
 Ashley F.T. McCall
 Maaria Mozaffar
 Colleen Murphy
 Clark Pellett
 Jennifer Pope
 Mary Pounder
 Dorothy M. Press
 Carol Prins
 Sheridan Prior

Zora Ristanovic
 Sheila Roche
 Esther Saks
 Jane M. Saks
 Karen Salmon
 Smita Shah
 Cindy Soper
 Julia Stasch
 Cathy Stein
 Anne Studzinski
 Jeanne Sullivan
 Simon Taylor
 Dia S. Weil
 G. Marc Whitehead
 Judy Wise
 Rachel Stevens
 Zakaria

Frankfurt Committee

Ulrike von Waitz, Chair
Nesrin Thomsen, Director
Jörg Fleckenstein, Associate Director
 Sibylle Balzer-Kuna
 Konrad v. Bethmann
 Heike Eichhorn
 Dagmar Hesse-Kreindler
 Andreas Kehl
 Ulrike Klinke-Kobale
 Cäcilie Klüber
 Dorothée Mettenheimer
 Sybille Sternagel-Kohlhas
 Elisabeth Strobl-Haarmann
 Thomas Wiegand
 Uwe Zöllner

Geneva Committee

Neil Rimer, Vice-Chair
Loubna Freih, Vice-Chair
Armelle Armstrong, Senior Director
Aurore Sajhau, Associate Director
 Dani Bach
 Kristin Hamilton
 Becnel
 Helena Bjäringer
 Leda Braga
 Meagan Carnahan
 Suzan Craig
 Angela de Oliveira

Magali Deconinck
 Claude Demole
 Paula Dupraz-Dobias
 Dina Said Dwyer
 Adla El Sayegh
 Helena Frick
 Keyvan Ghavami
 Laura Ghazzaoui
 Philip Grant
 Nadège Hentsch
 Denis Houllès
 Caitlin Kraft-Buchman
 John H. McCall MacBain
 Marcy McCall MacBain
 Pierre G. Mirabaud
 Atalanti Moquette
 Fergal J. Mullen
 Sibylle Pastré
 Marina de Planta
 Renaud de Planta
 Camille Prezioso
 Amal Brihi Riachi
 Elianna Moquette Sabbag
 Adam Said
 Dalia Said
 Walter Stresemann
 Dimitri Theofilides
 Olivier Vodoz
 Philippa Layland Vogel
 Stephanie Rada Zocco

Germany Executive Committee

Kimberly Marteau
 Emerson
 Marina Kayser-Eichberg
 Uli Langenscheidt
 Louisa Lee-Reizes
 Melissa Schneider-Sickert
 Karen Roth
 Marie M. Warburg

London Committee

David Lakhdir, Chair
Angela Sharma, Director
Helen Olszowska, Associate Director
 Christiane Altenburg
 Fiona Andersson Bauer
 Dietrich Becker
 Beth Blood
 Robin Brooks

Lisa Cirenza
 Jenny Dearden
 Tony Elliott
 Henry Fajemirokun
 Caroline Greenhalgh
 Louis Greig
 Michelle Crowe Hernandez
 Julie Hoegh
 Nina Hirji Kheraj
 Youssef Khlat
 Sarah Martin
 Yossi Mekelberg
 Patricia Mirrlees
 Lois Moore
 Laura Mosedale
 Elizabeth Passey
 Cristina Perez-Hernandez
 Sophie de Picciotto
 Gerhard Plasonig
 Barbara Prideaux
 Olfa Rambourg
 Sunaina Sinha
 Ottoline J. Spearman
 Isabelle de Wismes
 Joanne Yates
 Catherine Zennström

Los Angeles Committee

Leslie Gilbert-Lurie, Co-Chair
Rica Rodman, Co-Chair
Jonathan Feldman, Vice-Chair
Kimberly Marteau Emerson, Co-Chair Emerita
Mike Farrell, Co-Chair Emeritus
Shari Leinwand, Co-Chair Emerita
Victoria Riskin, Co-Chair Emerita
Sid Sheinberg, Co-Chair Emeritus
William D. Temko, Co-Chair Emeritus
Jane Olson, Co-Founder
Justin Connolly, Senior Director
Perrine Vaillant, Associate Director
 Robert Abernethy
 Aileen Adams

Patricia Artigas
 Susi Bahat
 Joan Willens Beerman
 Peter Blake
 Terree A. Bowers
 Sarah Bowman
 Pam Bruns
 Kristin Ceva
 Tamar R. Chafets
 Melanie Chapman
 Maren Christensen
 Dena Cook
 Geoffrey Cowan
 Nancy Cushing-Jones
 Gary Dartnall OBE
 George Davis
 Kelly Davis
 Ellen Carol DuBois
 John Eisendrath
 Patricia Flumenbaum
 William Flumenbaum
 Laura Fox
 Seth Freeman
 Mary Garvey
 Frank Gehry
 Heather Grandy
 Rick Grandy
 Jane Gutman
 Ahmos Hassan
 Paul L. Hoffman
 Kathy Hoss
 Jihee Huh
 Peter Huh
 Elia Infascelli
 Jordan Infascelli
 David Johnson
 Claudia Kahn
 Richard Kendall
 Ken Kim
 Jeff Korchek
 James Lawson
 Jennifer Levin
 Ron Lushing
 Steve Marenberg
 Vicki Marmorstein
 Brian Matthews
 Barry Meyer
 Wendy S. Meyer
 Alicia Miñana
 Miriam Muscarolas
 Stanley Newman
 David Ondaatje
 Liz Ondaatje
 Jean Oppenheimer
 Bradley S. Phillips
 Tom Pollock
 Zazi Pope

Sandy Pressman
 Deborah Ramo
 Jim Ramo
 Jason Rapp
 Dan Reid
 Bill Resnick
 Seth Ribner
 David W. Rintels
 Ramona Ripston
 Alexis Roach
 Karen Roth
 Erica Rothschild
 Harley Rouda Jr.
 Kaira Sturdivant Rouda
 Benjamin Rubinfeld
 Butch Schuman
 Marc M. Seltzer
 Robert W. Shaffer
 Jon Sheinberg
 Lorraine Sheinberg
 Barbara Silberbusch
 Arthur F. Silbergeld
 Carol Silbergeld
 Hannah Skvarla
 Marcus Spiegel
 Garry Spire
 Ramyne Khan Spire
 Michael J. Stubbs
 Brigitte Suhr
 Janet Unterman
 Thomas Unterman
 Marysol Velamoor
 Liza Wachter
 Bob Wagman
 Julie Waxman
 Alison Whalen
 Patricia Williams
 Chic Wolk
 Edward Woods
 January Woods
 Noah Wyle
 Emily Zipperstein
 Pardis Zomorodi

Melbourne Committee

Wendy Brooks, Chair
Elaine Pearson, Director
Georgie Bright, Associate Director
 Sue Beecher
 John W.H. Denton
 Kate Durham
 Peter Falvey
 Diana Georgeff
 Damien Green

Dianne Lucas
 Fiona Mason
 Fiona Nixon
 Jennifer Price
 Kristin Stegley

Munich Committee

Haldis Engelhardt, Co-Chair
Uli Langenscheidt, Co-Chair
Nesrin Thomsen, Director
 Marleen Bartels
 Minu Bockelbrink
 Susanna Bruglacher
 Andrea Karg
 Marina Kayser-Eichberg
 Eva-Maria Klunker
 Harald Kosch
 Ruth Krafft
 Barbara Nonnenmacher
 Shahpar Oschmann
 Stephanie Rechenberg
 Irina Revina-Hofmann
 Gabriele Scheidt
 Christoph Schwingenstein
 Dorothee Wahl
 Chiona Xanthopoulou-Schwarz

The Netherlands Committee

Rob van den Bergh, Co-Chair
Glenda Nühn-Morris, Co-Chair
Françoise van Rappard, Vice-Chair
Marjan Sax, Vice-Chair
Tammy Parrish, Associate Director
Katrien van de Linde, Senior Associate Director
 Zaina Ahmed-Karim
 Bernard Bot
 Max Christern
 Karin Doeksen-Kleykamp
 Janneke Dreesmann-Beerkens
 Geesje Hamming
 Ernst Hirsch Ballin

Gert Jan Hubers
Imogen Koster-
Burbidge
Herman Lammerts
van Bueren
Frank L. Leijdesdorff
Pieter Ligthart
Fred Matsler
Bart Meuter
Willemijn Milders
Ernst Nijkerk
Derk Sauer, Founding
Chair Emeritus
Pieter Scheltema
Anna Timmerman
Inge van Verschuer
Janet Visbeen
Erik Westerink
Liesbeth Zegveld

New York Committee

Kristen Durkin,
Co-Chair
Susan M. Kath,
Co-Chair
Amy Towers,
Chair Emerita
Michael G. Fisch,
Chair Emeritus
Kevin P. Ryan,
Chair Emeritus
Angela Deane,
Senior Director
Donna Leonard,
Associate Director
Allen R. Adler
Lishan Aklog
Kathleen Begala
Elizabeth Bentley
Philip Bentley
Juliette Brody
Lisa Cohen
Dana Conroy
Beth Ann Day
Paul DeNoon
Patrick Durkin
Jess Fardella
Maria Goreth Fidalgo
Laura Fisch
Kate Gellert
Ann Brady Gorran
Pamela Grace
Simonne Hewett
Christa Meyer Hinckley
Donald Huber
Sanae Ishikawa
EJ Jacobs

Robert G. James
Neene Jenkins
Mo Kamaly
Susan Kane
Farah Kathwari
Andrew Kaufman
Suzanne Kennedy
Wendy Keys
Kim Killion
Claire Williams
Martinez
Adla Massoud
Terence Meehan
Sam Scott Miller
Alejandro Moreno
Colleen Murphy
Takashi Oyagi
Andrew Pataki
Anne Prentice
Megan Quitkin
Bruce Rabb
Ahna Rao
James Rasteh
Ricki Roer
Jim Rosenfield
Shana Ward Ryzowy
Rosemary Sagar
Supriya Saxena
Steven R. Schindler
Pascaline Servan-
Schreiber
Susan L. Sommer
Milton Speid
Charlotte Strick
John J. Studzinski CBE
Vikram Suresh
Phoebe Taubman
Win Thin
Katherine Todrys
Stephen A. Warnke
Richard M. Zuckerman

Oslo Committee

Siri Stolt-Nielsen,
Co-Chair
Martin Traaseth,
Co-Chair
Helena Lamb, Director
Charlotte S.
Champalimaud
Erlend W. Holstrøm
Nicolette Horn
Ingrid Indahl
Erik Langaker
Henrik Mjøen Hafstad
Alexander Munch-
Thore

Clementine
Munch-Thore
Elaine Riddervold
Theresa Sinding
Katinka Traaseth
Kristina Wilhelmsen
Bettina Syberg Winje

Paris Committee

Mercedes Erra,
Co-Chair
Virginie Morgon,
Co-Chair
**Jean-Louis Servan-
Schreiber,** Founding
Chair Emeritus
Robert Badinter,
Honorary Chair
Valérie Lombard,
Senior Director
Mireille Delmas Marty
Françoise Gaspard
Costa Gavras
Christine Ockrent
David de Rothschild
Jean-Christophe Rufin
Anne Sinclair
Abderrahmane
Sissako

Tahar Ben Jelloun
Constance Borde
William Bourdon
Gérard Brémond
Vincent Catherine
Catherine Clément
Miranda Dunbar
Johnson
Catherine Emprin
Réjane Lacoste
Valérie Lafarge-
Sarkozy
Danièle Kapel
Marcovici
Nadia Marik-Descoings
Didier G. Martin
Christopher Mesnooh
Olfa Rambourg
Marie-Laure Sauty
de Chalon
Perla Servan-Schreiber
Evelyne Sevin
Inge van Verschuer
Thierry Wellhoff
Catherine Zennström

San Francisco Committee

Joy L. Alferness, Chair
Herbert M. Sandler,
Honorary Chair
David Keller, Chair
Emeritus
Lore H. McGovern,
Chair Emerita
Nancy J. Parrish,
Chair Emerita
Amy Rao, Chair
Emerita
Orville Schell,
Chair Emeritus
Darian W. Swig,
Chair Emerita
Jen Haile, Director
Tina A. Burgelman,
Associate Director
Leslie Berriman
Alden H. Blair
Margaret H. Blair
Tina Bou-Saba
Christine Bouckaert
Joseph Bouckaert
James Brosnahan
Mark Buell
Susie Tompkins Buell
Shashi Buluswar
Ipek Burnett
Aneesha Capur
Stefanie Coyote
Nora Diab
Connor Diemand-
Yauman
Natasha Dolby
Becky Draper
Shefali Razdan Duggal
Carla Emil
Andrea Fitandis
Glen Galaich
Mark R. Grace
Nonie Greene
Melinda Griffith
Jane Gruber
Linda W. Gruber
Wyatt Gruber
Alyssa Harper
Caitlin Heising
Syed Hoda
Ambassador James
C. Hormel
Spencer Hosie
Kathleen Kelly Janus
Steve Jensen
Renita Kaushal

Edmond Kavounas
Peggy Kavounas
Kim Keller
Danielle Kraaijvanger
Marty Krasney
Stephen A. Mansfield
Nion McEvoy
Linda McKenzie
Christopher Mesnooh
Whitney Miller
Belinda Muñoz
John O'Farrell
Julie Parish
John Pellegrini
JaMel Perkins
Tom Perkins
Joan R. Platt
Gloria Principe
Amy Rao
Diane L. Rice
Stuart Russell
Aenor Sawyer
Demi Seguritan
Fred Seguritan
Shardul Shah
Loy Sheflott
Stephen M. Silberstein
Andrea D. Steele
Eric Stover
Salima Taplin
Mindy Uhrlaub
Kathryn and
Robert Vizas
Alexis Wagener
Lucinda Watson
Leigha Weinberg
Alex Mallick Williams
Marsha Garces
Williams
Katie J. Zoglin

Santa Barbara Committee

Gwyn Lurie, Co-Chair
Fiona Stone, Co-Chair
Rita Moya, Vice-Chair
John Steed, Vice-Chair
Elisabeth Leader,
Associate Director
Bruce Anticouni
Judy Anticouni
Richard P. Appelbaum
Marc Appleton
Evan Aptaker
Pat Aptaker
Laurie Ashton
Roman Baratiak

Pascale Beale
Mary Becker
Arnold Bellowe
Jill Bellowe
Ashish Bhutani
Leslie Bhutani
Nancy B. Brown
Lalla Brutoco
Rinaldo Brutoco
Laura Burton Capps
Benjamin J. Cohen
John Mike Cohen
Marcia Cohen
Barbara Delaune
Warren
Kathryn M. Downing
Judy Egenolf
Rob Egenolf
Nancy Englander
Larry Feinberg
Bill Felstiner
Christine Fletcher
William Fletcher
Elisabeth Fowler
Carole Fox
Ron Fox
Martha Gabbert
Pamela Gann
Diane Giles
Mike Giles
Daniel Goldstein
Kathie Gordon
Mike Gordon
Kerrilee Gore
Martin Gore
Tipper Gore
Ken Grand
David W. Hardee
Judith Hopkinson
Mer James
Lucille Janssen
Richard Janssen
Sharyn Johnson
Cheryl Justice
Junemarie Justus
Thomas Justus
Rebecca Kaye
Barry Kemp
Margaret Kemp
Elaine Kendall
Herbert Kendall
Thomas Kenny
Joanna Kerns
Dorothy Largay
Kathleen Lavidge
Vivienne Leebosh
Mark Leffert

Nancy Leffert
Nancy Lessner
Peter Lewis
Gretchen Loeff
Robert Loeff
Leatrice Luria
Elliott MacDougall
Naila Mathis
Brett Matthews
Alecia Mayrock
Elliot Mayrock
Sara Miller McCune
Donna-Christine
McGuire
Michael McGuire
Michelle Mcintosh
David McKeever
Edward J. McKinley
Pamela McLean
Susan McMillan
Sherry Melchiorre
Sara Miller McCune
Kathleen Minck
Rassa Montaser
Graciela Montgomery
Steve Moya
Betsy Newman
Charles Newman
Adrienne O'Donnell
Jane Olson
Thomas R. Parker
Lynn Pearl
Melvin Pearl
Tom Piozet
Maxine Prisyon
Ron Pulice
Stacy Pulice
Diana Raab
Simon Raab
James Read
Wendy Read
David W. Rintels
Victoria Riskin
Justine Roddick
Regina Roney
Rick Roney
Honorable Susan Rose
Sybil Rosen
Ginger Salazar
Heather Salzman
Jim Salzman
Lynn Sarko
Tina Schlieske
Lynn Shafer
Starr Siegele
Connie J. Smith
Fredric E. Steck

Suzanne Steed
Ralph Thomas
Leslie Dennis Tolan
D. William Wagner
Sue Aldrich Wagner
Milton Warshaw
Susan Washing
Taylor Washing
Thomas Washing
Judi Weisbart
Dan Williams
Diane Zipperstein
Steve Zipperstein

Silicon Valley Committee

**Sofie Vercruysse-
Vandeputte,** Chair
Amy Rao, Chair
Emerita
Gina Maya, Director
Dana Fenwick
Barbara Hugli-Jones
Susie Hwang
Keith Jantzen
Amanda Jones
Barbara E. Jones
Frances Hall
Kieschnick
Joan R. Platt
Gloria Principe
Beth Van Schaack
Marie Vought

Anne Avis
Greg Avis
Brandee Barker
Beth Bartlett
Paul Bartlett
Scott Beth
Jan Birenbaum
Larry Birenbaum
Emily Bosworth
Richard Capelouto
Carole Carney
Noha Carrington
Katharine Carroll
Fran Codispoti
Camelia Coupal
Nancy Coupal
Simone Otus Coxé
Tench Coxé
Peggy Dalal
Yogen Dalal
Ann Doerr
Mary deBree
Barbara W. Deméré

Douglas Edwards
Kristen Edwards
Judith Estrin
Anne Frahn
Buzz Frahn
Catharine F. Garber
Aart de Geus
Loren Gordon
Michael Gordon
Andrew Guggenhime
Shari Guggenhime
Germaine Yokoyama
Heiliger
Jonathan Heiliger
Mark W. Heising
Esther M. John
Nanci Kauffman
Scott Kauffman
Michael Kieschnick
Marty Krasney
Terri Luchsinger
Mary Jane Marcus
Andrew Moley
Cathy Crane Moley
Armand Neukermans
Eliane Neukermans
John O'Farrell
Harry K. Plant
Susie H. Richardson
Alison Rosenthal
Deborah Rennels
Salkind
Alice Schaffer Smith
David Scheible
Jean Scheible
Wendy Schmidt
Jane Shaw
Liz Simons
Sarah Speakman
Mary Speiser
Michael Speiser
Ward Vercruysse
Katie J. Zoglin

Stockholm Committee

Björn Nilsson, Chair
Måns Molander,
Director
Sara Löfberg, Manager
Daniel Andersson
Nalini Bonnier
Claes Cronstedt
Saeid Esmaeilzadeh
Karin Forseke
Sebastian Knutsson
Therese Kuylenstierna

Ulrika Laurin
Jeanette Mix
Anna Orring
Susanne Rönne
Mattsson
Nina Siemiatkowski
John Tandberg
Cecilia af Trolle
Magnus Tyreman
Shori Zand
Catherine Zennström
Niklas Zennström
Ami Åström

Sydney Committee

Penny Gerstle, Chair
Elaine Pearson,
Director
Georgie Bright,
Associate Director
Thomas Calma
Monique Corah
Lyndell Droga
Maria Farmer
Andrew Kaldor
Julian Knights
Roanne McGinley Knox
Amanda Laing
Jane Marquard
James McMurdo
Christian Nicks
Brendan O'Flynn
Dean Parkin
Lenore Robertson
Joseph Skrzynski
Malcolm Spry
Laura Thomas

Tokyo Committee

Oki Matsumoto, Chair
Takashi Murata,
Vice-Chair
Tomas Olsson,
Vice-Chair
Makoto Takano,
Vice-Chair
Mamoru Taniya,
Vice-Chair
**Masakazu
Yanagisawa,**
Vice-Chair
Jungmi Cho, Director
Basa Koga, Acting
Associate Director
Yasushi Ando
Masashi Hamanaka
Nobuyuki Idei

Mika Ikenobo
Koichi Ito
Daisuke Iwase
Yoshimitsu Kaji
Kenji Kasahara
Fumiko Kato
Naonori Kimura
Masahiro Koshiba
Kiyoshi Kurokawa
Hiromichi Mizuno
Haruo Nakamura
Amane Nakashima
Taro Otsuka
Quinn Riordan
Rika Riordan
Haruki Satomi
Ken Shibusawa
Parker Simes
Shizuko Simes
Koichi Tateno
Toshiro Ueyanagi
Hidetoshi Watabe
Sakiko Yamada
Kotaro Yamagishi
Kimiya Yamamoto
Seiji Yasubuchi

Zürich Committee

Cristina E. Bechtler,
Co-Chair
Mariel Hoch, Co-Chair
Manuel Ebner,
Vice-Chair
Jean-Jacques Henchoz,
Vice-Chair
Thomas Bechtler,
Chair Emeritus
Brigitte Schmid,
Senior Director
Raymond Bär
Franziska Bark Hagen
Ruedi Bechtler
Filippo Beck
Doris Berchtold
Walter Berchtold
Paolo Bernasconi
Martin Bölsterli
Edward
Brenninkmeijer
Eva Brenninkmeijer
Ghislaine
Brenninkmeijer
Marcel Brenninkmeijer
Stanley Buchthal
Nadia Chatti-Beck
George Coelho

Claudia Coninx-
Kaczynski
Kim Diethelm
Markus Diethelm
Susi Ebner
Peter Forstmoser
Barbara Fry Henchoz
Dieter Gericke
Rebecca Gericke
Oliver Hagen
Maja Hoffmann
Gitti Hug
Dominik Keller
Walter Kielholz
Peter Kilchmann
Thomas Koerfer
Regula Kunz Bechtler
Inès Lombard
Négar Marazzi
Renato Marazzi
Gaby Nahmani
Richard Nahmani
Margo O'Brien
Albert Oehlen
Esther Oehlen
Regina Ogorek
Alessandro Parenti
Sabine Parenti
Eva Presenhuber
Ellen Ringier
Yves Robert-Charrue
Urs Rohner
Manuel Rybach
Peter Schindler
Irene Staehelin
Daniel Stauffacher
Denise von Stockar
Urs von Stockar
David Syz
Mathias Thielen
Silvia Thielen
Daniel Thürer
Martina Vondruska
Joseph Walters
Franz Wassmer
Barbara Wiedmann
Urs Wietlisbach
Thomas Wyss

Ambassadors

Mohamed Bouamatou
Andrea de Botton
Dreesmann
Hina Jilani
Julie de Luxembourg
Olfa Rambourg
Victoria Riskin

Eric Sarasin
Javier Solana
Siri Stolt-Nielsen

Global Circle of Friends

Emad J. Al-Hejailan

Basel Circle of Friends

Eric Sarasin,
Ambassador
Brigitte Schmid,
Senior Director
Rolando Benedick
Christine Cerletti-
Sarasin
Jana Kirchhofer
Thomas Kirchhofer
Leslie Koechlin
Tom Koechlin
Hans Landolt
Nicole Miescher
Andreas Nidecker
Wendy Olum Roth
Rudolf Roth
Anthony Vischer
Peter Andreas Zahn

Copenhagen Circle of Friends

**Christian Riis-
Hansen**, Chair
Måns Molander,
Director
**Anne Sofie
Christensen Bau**,
Associate Director
Anette Ahm
Gritt Basse
Kristoffer Basse
Jeanette Duus
Lars Dybkjær
Pernille Dybkjær
Jeanne von Haller
Grønbæk
Martin von Haller
Grønbæk
Morten Hummelose
Nanna Hummelose
Lars Jensen
Henrik Poulsen
Mikkel Rasmussen
Julie Riis-Hansen
Julie Rovsing
Helena Sand
Kåre Sand

Anna Søndergaard
Christian Tang-
Jespersen
Jeanett Tang-Péronard
Paola Uggla
Sasja van Vechgel

India Circle of Friends

Meenakshi Ganguly,
Director
Anu Aga
Rati Forbes
Cyrus Guzder
Luis Miranda
Cyrus Poonawalla
Abhijit Raha
Kavita Raha

Miami Circle of Friends

Carine Chehab,
Director
Ashley Melisse Abess
Jeffrey Akin
Lisa Schejola Akin
Norman Aynbinder
Didi Bertrand-Farmer
Jorge Castañeda
Manny A. Diaz
Richard W. Fields
Joy Stampler Fishman
Julio Frenk
Cindy Goldberg
Deborah Hoffman
Felicia Marie Knaul
David Lawrence Jr.
Bonnie Levin
Aleida Martinez-
Molina
Alicia Miñana
James W. Nickel
Alex Niemeyer
Takashi Oyagi
Eduardo J. Padrón
Patricia M. Papper
Susan Pernick
Soledad Picón
Beatrice Rangel
Gloria Reiss
Lida Rodriguez-Taseff
Shelley Frost Rubin
Linda Schejola
John J. Sicilian
Katy Sorenson
Matthew Vander Werff
Susan Werth

Patricia D. White
George Zuber

São Paulo Circle of Friends

Maria Laura Canineu,
Director
Carolina Cooper,
Senior Manager
Carlos Pires e
Albuquerque
Augusto de Arruda
Botelho
Brasília de Arruda
Botelho
Luciana Garcia
Capobianco
Flavia Ribeiro
de Castro
Rafael Coelho
Alexandra Loras
Álvaro Novaes
Jairo Okret
Rodrigo Luis
Shiromoto

New Council Presences

Seoul

Judy Kwon, Director

Executive Management

Kenneth Roth
Executive Director

Michele Alexander
Development &
Global Initiatives

Nic Dawes
Media

Liesl Gerntholtz
Women's Rights/Program

Iain Levine
Program

Chuck Lustig
Operations

Bruno Stagno Ugarte
Advocacy

Management

Walid Ayoub
Information Technology

Pierre Bairin
Multimedia

Laura Boardman
Development & Outreach

David Bragg
Administration &
Operational Initiatives

Matthew Collins-Gibson
Development & Outreach

Emma Daly
Communications

Alan S. Feldstein
General Counsel, Operations

Jasmine Herlt
Development & Outreach

Miriam Mahlow
Development & Outreach

John Mix
Marketing

Stephen Northfield
Digital

Babatunde Olugboji
Deputy Program

Barbara Pirto
Finance

Dinah PoKempner
General Counsel

Tom Porteous
Deputy Program

James Ross
Legal and Policy

Joseph Saunders
Deputy Program

Frances Sinha
Global Human Resources

Seamus Tuohy
Information Security

Program Directors

Brad Adams
Asia

Nicole Austin-Hillery
United States

Shantha Rau Barriga
Disability Rights

Peter Bouckaert
Emergencies

Zama Neff
Children's Rights

Richard Dicker
International Justice

Bill Frelick
Refugees

Arvind Ganesan
Business & Human Rights

Liesl Gerntholtz
Women's Rights

Steve Goose
Arms

Nadim Houry
Terrorism / CounterTerrorism

Diederik Lohman
Health & Human Rights

Marcos Orellana
Environment & Human Rights

Alison Parker
United States

Graeme Reid
Lesbian, Gay, Bisexual &
Transgender Rights

Mausi Segun
Africa

José Miguel Vivanco
Americas

Sarah Leah Whitson
Middle East & North Africa

Hugh Williamson
Europe & Central Asia

Daniel Wilkinson
Americas

Advocacy Directors

Philippe Bolopion
Deputy Advocacy Director

Maria Laura Canineu
Brazil

Louis Charbonneau
United Nations, New York

Farida Deif
Canada

Kanae Doi
Japan

John Fisher
United Nations, Geneva

Meenakshi Ganguly
South Asia

Bénédicte Jeannerod
France

Lotte Leicht
European Union

Sarah Margon
United States

David Mephram
United Kingdom

Wenzel Michalski
Germany

Måns Molander
Sweden, Denmark

Elaine Pearson
Australia

11th Hour Project
 Adessium Foundation
 Allen R. Adler and Frances Beatty
The Annenberg Foundation
 Anonymous (22)
 Christophe and Gina d'Ansembourg
The Arah Foundation
 Arcus Foundation
 Henry H. Arnhold
 The Atlantic Philanthropies
 Rémy and Verena Best
Martin and Helena Bjäringer
Beth and David Blood
 BMO Financial Group
Leda Braga
 Bridgeway Foundation
Devon and Pete Briger
 Brook Foundation
 David M. Brown
 Susie Tompkins Buell and Mark Buell
 Carnegie Corporation of New York
 Clifford Chance LLP
 Conant Family Foundation
 Gilles and Marie Concordel
The Destina Foundation
The Diller-von Furstenberg Family Foundation
 The Dolby Family
 Don Quixote Foundation
 Dutch Postcode Lottery
 Fondation pour l'Egalité des Chances en Afrique / Mohamed Bouamatou
 Epstein Teicher Philanthropies
 Susan and Stefan Findel

Laura and Michael G. Fisch
 Goldman Sachs Gives at the recommendation of Lawton W. Fitt
 FJC Philanthropic Funds
 The Ford Foundation
 Fred Foundation
 Frey Charitable Foundation
 Mary and Michael E. Gellert
Aart de Geus and Esther M. John Gill Foundation
Dedrea and Paul Gray
 Gruber Family Foundation
 Hamburger Stiftung zur Förderung von Wissenschaft und Kultur
 The Heising-Simons Foundation
 Nadège and Christophe Hentsch
 Fondation Hoffmann
 Goldman Sachs Gives at the recommendation of Hidehiro Imatsu
 International Campaign to Ban Landmines
 The Joan and Irwin Jacobs Fund of the Jewish Community Foundation
 JK Stichting
Barbara E. Jones
 Susan Kane
 Kendeda Fund
 Robert and Angela Kissane
 Masahiro Koshiba
 Réjane and Michel Lacoste
 Linda and David Lakhdhir
 Jeanne D. and Kenneth Levy-Church
 Lodz
 The Henry Luce Foundation
 Luma Foundation

The John D. and Catherine T. MacArthur Foundation
 Rasha Mansouri and Hassan Elmasry
 Oki Matsumoto
 Wendy and Barry Meyer
 Sara Miller McCune / Sage Publishing
 Alicia Miñana and Rob Lovelace
Jennifer Moores Family and Change for Justice
 William and Clemence von Mueffling
 Takashi Murata
Colleen Murphy
 R. Bruce Nicklas
 Oak Foundation
 The Omidyar Group
 The Open Society Foundations
 Panaphil and Uphill Foundation
 Donald A. Pels Charitable Trust
People's Postcode Lottery
Lucy Pereira
 Planet Wheeler Foundation
Renaud and Marina de Planta
 Joan R. Platt
Sheridan Prior and Michael Bender
 Public Welfare Foundation
 Amy Rao and Harry Plant
 Louisa Lee-Reizes and Justin Reizes
 Neil and Touli Rimer
 Dalia and Ramzi Rishani
 Victoria Riskin and David W. Rintels
 Shelley Frost Rubin and Donald Rubin
 Rural India Supporting Trust
 Samuel Centre for Social Connectedness (SCSC)

The Samuel Family Foundation
 Sandler Foundation
 The Satter Foundation
Jacques and Iman de Saussure
 Wendy Schmidt
 Lorraine and Sid Sheinberg
 Stephen M. Silberstein
 Bruce and Tracy Simpson
 Sky Foundation (Skrzynski Family)
 Donna and Gary Slaight
 Rodolphe and Caroline de Spoelberch
 Irene Staehelin
 Stardust Foundation
 Siri Stolt-Nielsen
 John J. Studzinski CBE/The Genesis Foundation
 Swedish Postcode Lottery
 Makoto Takano
 Jeffrey and Amy Towers
 Trellis Fund
 Julie-Anne Uggla
Stiftung Usine
 Vital Projects Fund, Inc.
 Joe Walkush
 Marva Warnock
Lucinda Watson
 Wietlisbach Foundation
 Zennström Philanthropies

Bolded names represent new supporters who contributed a gift of 100,000+ USD in FY18

\$25,000 - \$99,999

Terri Abruzzo and David Callahan
 Karen Herskovitz Ackman
 Dr. Lishan Aklog and Maria Goreth Fidalgo
 Isabel Allende Foundation
 Yasushi Ando
 Anonymous (24)
 Bank Australia
 Barclays
 Brandee Barker
 Phyllis and Aaron Beck
 Kathleen Begala and Yves-André Istel/Y.A. Istel Foundation
 Philip Bentley and Michele Ferenz
 Walter and Doris Berchtold
 Konrad v. Bethmann
 Jan and Larry Birenbaum
 BloombergSen
 Investment Partners
 Bouamatou
 Fondation Privée
 Breen Mills Foundation
 Edward and Ghislaine Brenninkmeijer
 Brighter Vision Foundation
 Broadway Cares/Equity Fights AIDS
 Beth and Andy Burgess
 Capital Group Companies
 Katharine Carroll and Alison Rosenthal
 Elizabeth and Richard Cashin
 Jean-Christophe Castelli and Lisa Silver
 Polly G. Cherner
 Cineplex Media
 Clifford Chance LLP
 George Coelho and Margo O'Brien
 Lisa Cohen and Win Thin
 Community Counselling Services
 Kathryn and David Cottingham
 Simone and Tench Coxe
 craigslist Charitable Fund
 Theodor Dalenson
 Kelly and George Davis
 The Dillon Fund
 Ann and John Doerr
 Marc and Janneke Dreesmann-Beerrens

Pieter and Olga Dreesmann
 Edwards Family Fund, an advised fund of Silicon Valley Community Foundation
 Eiendomsspar AS
 Kimberly Marteau
 Emerson and John Emerson
 Carla Emil and Rich Silverstein
 Judith Estrin
 Eurazeo
 Marianna and David Fisher
 Joy Fishman
 Fondation de bienfaisance du groupe Pictet
 Foux Foundation
 Fraenkel Gallery
 Luis and Angela Freitas de Oliveira
 Anke Beck-Friedrich and Jürgen Friedrich, JAF Foundation
 Olivier and Nathalie Fulconis
 Gieskes-Strijbis Fonds
 Jill Garling and Tom Wilson
 Leslie and Cliff Gilbert-Lurie
 Cindy Goldberg
 Google Matching
 Gifts Program
 Ann Brady Gorran and Scott Gorran
 Mark R. Grace and Steve Jensen
 Anthony and Helen Graham
 Dedrea and Paul Gray
 John S. and James L. Knight Foundation
 Susan and Greg Guichon
 Richard and Nancy Hamm
 The Harman Family Foundation
 Alyssa Harper
 Havas / Mercedes Erra
 Germaine Yokoyama
 Heiliger and Jonathan Heiliger
 The Wilhelm Helmut Trust
 Jean-Jacques Henchoz and Barbara Fry Henchoz

Highland Europe (Geneva) Sarl
 Hitz Foundation
 Irina and Volker Karl Hofmann
 Jihee and Peter Huh
 The Hunter-White Foundation
 Charles Hutchins
 J Leon Group
 Charitable Fund
 Alfredo Jaar
 Philippe and Zaza Jabre
 Robert and Ardis James Foundation
 Suzanne and David Johnson
 Barbara Hugli-Jones and Christopher Jones
 The Peter T. Joseph Foundation
 Anish Kapoor
 Kenji Kasahara
 Irfan Kathwari
 Foundation, Inc.
 Marilyn and Jeffrey Katzenberg
 Peggy and Ed Kavounas
 Ric and Suzanne Kayne
 Kayser-Eichberg Family
 Elaine and Herbert Kendall
 Nina Hirji Kheraj and Naguib Kheraj
 Walter Kielholz
 Frances and Michael Hall Kieschnick
 Ken and Johanna Kim
 Mark Kingdon
 Daisuke Kitta
 Lizanne and Julian Knights
 Goldman Sachs Gives at the recommendation of Etsuko Kobayashi
 Kramer Levin Naftalis & Frankel LLP
 Marty Krasney
 François Laffanour
 Galerie Downtown
 LaureL Foundation
 John S. Latsis Public Benefit Foundation
 Didac Lee
 Tom Lehrer
 The Leibowitz and Greenway Family
 Charitable Foundation
 John M. Lloyd Foundation
 Lodestar Fund
 Lillian P. Lovelace
 Terri Luchsinger

Robert and Julie de Luxembourg
 Stephen J. Lynton
 MAC AIDS Fund
 Ute Magis
 William F. and Amalia Perea Mahoney
 Akinori Matsui
 Gina Maya and Richard Capelouto
 McCall MacBain Foundation
 The McMurdo Family
 Sherry Melchiorre, Ph.D.
 Ian Melrose
 Stichting Message in a Photo
 Sam Scott Miller
 Thomas and Sarah Milroy
 Yves Mirabaud
 Richard and Myriam Misrach
 Boudewijn Molenaar
 Alejandro Moreno
 Virginie Morgon and Marc Abelin
 The Morrison & Foerster Foundation
 Richard Mosse
 Miriam Muscarolas and Grant Abramson & Weingart Foundation
 Andy Nahas
 New York University School of Law
 Grace Newton and David Weinberg
 The Niner Foundation
 Sander van't Noordende
 Normandie Foundation
 Adriaan and Glenda Nühn-Morris
 Patrick Odier
 Albert and Esther Oehlen
 John O'Farrell and Gloria Principe
 Jane and Ron Olson
 Tomas Olsson
 The Bernard Osher Foundation
 Anne and Nick Patterson
 Skip Paul and Van Fletcher
 Pecunia AS
 Kathleen Peratis
 JaMel and Tom Perkins
 Rosemary Phelan
 Polak-Mainz Foundation
 Posel Foundation
 Prime Finance

Pro Victimis Foundation
 RAJA SA/ Danièle Kapel-Marcovici
 Geoff and Andrea Ralston
 The Rambourg Foundation/Olfa and Guillaume Rambourg
 Paula and Mike Rantz
 RBC
 Ribbink Van den Hoek
 Familiestichting
 Susie Richardson
 Alfred Richterich
 Stiftung
 David and Mehr-Afarin Rimer
 Robertson Foundation
 Stichting Robin
 Karen Roth
 RPIA
 Stichting Run for Human Rights Watch
 The Said Family
 Sebastião Salgado
 Haruki Satomi
 The Schaffner Family
 Foundation
 Carlo & Micòl Schejola
 Foundation
 Gerd Schepers and Martina Vondruska
 Steven R. Schindler
 and Susan M. Kath Schindler
 Cohen & Hochman LLP
 Linda and Ted Schlein
 Julien Schoenlaub / XBG
 Consulting Partners
 Butch Schuman
 Scotiabank
 The Scott Foundation
 Pascaline Servan-Schreiber and Kevin P. Ryan
 Richard Sharp
 John J. Sicilian
 Filip Sirovy
 Willem Sijthoff
 Amaury and Myriam de Solages
 Stanford University
 Walter and Claire-Françoise Stresemann
 Darian and Rick Swig
 Swiss Re Foundation
 Makoto Takano
 Christophe and Patricia Tanghe
 The Taylor Family
 Ursula den Tex
 TOBAM

Eric and Katherine Todrys
 Goldman Sachs Gives at the recommendation of Eiji Ueda
 UK Gift Aid
 Xavier and Alexandra Van Campenhout
 Bart and Tereza Van Malderen
 Anonymous
 Katy and Nick Vetch
 Janet Visbeen
 The von Waitz Family
 Wasserman Foundation
 Weil, Gotshal and Manges LLP
 Whispering Bells
 Whitman-Carlyon Foundation
 Anders and Kristin Wilhelmsen
 The Winston Foundation, Inc.
 Judy Wise and Sheldon Baskin
 Akio Yamashita
 Vanguard Charitable on behalf of Ms. Peg Yorkin
 Zegar Family Foundation
 The Rada Zocco Foundation
 Evrard and Juliette van Zuylen van Nyevelt

\$5,000 - \$24,999

Robert Abernethy
 Ackermans & van Haaren
 Aileen Adams and Geoffrey Cowan & Weingart Foundation
 Ken Adams
 Shar Adams and Reg Bryson
 Paul-Emmanuel Aerts
 A.J. Agarwal
 Antoine and Emily van Agtmael
 Ainslie Foundation
 Aird & Berlis LLP
 Airlie Foundation
 AJG Foundation
 Akershus Eiendom
 Ryo Akima
 Akin Gump Strauss Hauer & Feld LLP
 Hesham Al-Alusi
 Joy and Jonathan Alfernss
 Allen & Overy
 Patricia D. Allen

Allmann Sattler Wappner Architekten
 Alphawood Foundation
 Altor Equity Partners AB
 Sharman and David Altshuler
 George Alvarez-Correa
 America's Best Charities
 H. van Ameringen Foundation
 Marie-Axelle Annicchiarico
 Anonymous (56)
 Judy and Bruce Anticouni
 The Apatow-Mann Family Foundation, Inc
 Apple Matching Gift Program
 Aqueduct Foundation - Savoy Pitfield Family Fund
 Arctic Securities ASA
 Léopold d'Arenberg
 ARIA Foundation
 Ars Vivendi
 Patricia Artigas
 Sabina von Arx
 ASBZ Advogado
 Lucy and Peter Ascoli
 Laurie Ashton and Lynn Sarko
 Ami Åström
 Jeanne and George Atkinson
 John Atwater
 Megan and Mark Aubrey
 Maria Audi
 Matthias Auer
 Aufeminin.com
 aventron AG
 Anne and Greg Avis
 Norman Aynbinder and Elan Nissenboim
 Mercedes and Gaston Azcarraga
 David Azéma
 Agnès B
 The Susan A. and Donald P. Babson Charitable Foundation
 Kent Bach
 Salah Bachir
 Bank Julius Baer & Co. Ltd.
 Neal Baer, MD
 Baggins AS
 Austin Baidas
 Sibylle Balzer-Kuna
 Toru Bando
 Lars Bane
 Banque privée BCP (Suisse) SA

Monique Bär and Lynn Blattmann
 Barclays Canada
 Tim and Kathryn Barefield
 Michael and Andrea Barrack
 The Barrington Foundation, Inc.
 Bartram Lawyers
 BDO AG
 Ruedi Bechtler and Regula Kunz Bechtler
 Thomas and Cristina Bechtler
 Filippo Beck and Nadia Chatti-Beck
 Carolin and Dietrich Becker
 Mary and Gary Becker
 William and Debbie Becker
 Beecher Family Charitable Fund
 Maarten Beek
 Ellen Stone Belic
 Bell Media
 Colleen and Bradley Bell
 Rolando Benedick
 Steve and Elizabeth Bentley
 Jacques de la Béraudière
 Berg Family Foundation
 Rob van den Bergh
 Berghain OstGut GmbH
 Susan Berkowitz and Marc O. Beem
 Susan Berlow
 Frances Bermanzohn
 Markus Berni
 Luc and Fabienne Bertrand
 BETC / Mercedes Erra
 Stefaan and Isabelle Bettens
 Bhalla Family
 Leslie and Ashish Bhutani
 Thomas Biland and Jon Cordova
 Babette Binder
 Steven Birnbaum
 Stefan von Bismarck
 Bitove Foundation
 Bjäringber Charitable Foundation
 Andrew Black
 Alden H. Blair
 Jennifer Blakely
 Lindsay Blakely and Anthony Hammill

BlueCrest Capital Management at the recommendation of Costin Bontas
 Bockus Brown Family Foundation
 Harold and Clotilde Boël
 Olivia Boersma-Koster
 Annabel and Dietrich von Boetticher
 James Bohnen
 Martin Bölkerli
 Bonnier Family
 Robert Boorstin
 Antoine and Isabelle Bosteels
 The Boston Consulting Group
 Tina and Joe Bou-Saba
 Sarah Bowman and William D. Temko & Munger, Tolles, & Olson LLP
 John Bowman
 Teresa Cristina Botelho Bracher
 Cheryl and Kenneth Branson
 Egmond and Sarah Brenninkmeijer
 Barend and Vera Brenninkmeyer
 Robert Brews and Kenneth Brown
 Arthur Bright
 Laurel Bright
 Anaïs Brodard-Droux
 Kiki Brölmann and Janne Nijman
 Robin and Diana Brooks
 Wendy and Rod Brooks
 Eliza Brown and Hal Candee
 Pam and Bill Bruns
 Lalla and Rinaldo Brutoco
 Ruth M. Buczynski
 Burgundy Asset Management
 Burnett Fund
 Luciana and Luigi Buttiglione
 The Calamus Foundation
 Campana & Schott
 Canaccord Genuity Group Inc.
 Canadian Film Centre
 Lindsey Canossa
 Aneesha Capur and Tom Kelly
 Carole Carney
 Marcy Carsey

Alan and Janan Carter
 Chris Carter
 Louise Cartledge and Peter Little
 Meredith Cartwright
 John and Mary Cassaday
 John and Nancy Cassidy
 Castilleja School
 Vincent Catherine and Raphaëlle Mathieu
 Frank J. Caufield
 Dirk and Axelle Cavens
 CBB Fund
 Christine Cerletti-Sarasin
 Kristino and Juan Ceva
 Bettina Chandler
 Earl M and Margery C Chapman Foundation
 Bruce and Gail Chizen
 Maren Christensen
 Stelios Christodoulou
 Elizabeth Cicchelli and Robert Buono
 Christian and Cristina Cigrang
 Michel and Virginie Cigrang
 Caroline and James Clark
 Fay Clayton and Lowell Sackhoff
 Cleary Gottlieb Steen & Hamilton LLP
 Andrew and Jane Clifford
 Mitchell Cobey and Janet Reali
 Fran Codispoti
 Caroline Cohen and Jean-Michel Bonamy
 Marcia and John Mike Cohen
 Cole Foundation
 Prentiss Cole
 Linda Burns Coleman
 Fondation Collatrice
 Simon Collins
 Deane and Judy Collinson
 Comcast | NBCUniversal
 Comer Family Foundation
 Claudia Coninx-Kaczynski
 Dolores Connolly and Daniel Casey
 Dana Conroy and Jim Rosenfield
 Suzanne Ivey Cook
 Dena Cook
 Tami and George Cope
 Monique and Simon Corah

David Coriat Corrs Chambers Westgarth SK and YY Cheung Family Foundation Judy and Bill Cottle Steven A. Cox Julie Coyne and Gary Dartnall OBE Suzan Craig The Craignish Trust Cravath, Swaine & Moore LLP Arnold and Odette Croiset van Uchelen- Matheijssen Theodore Cross Family Charitable Foundation CVC Capital Partners Christian Dahlberg Peggy and Yogen Dalal Jill and Bruce Dallas Georgios Damtsas The Danielson Foundation Henry D'Auria Georgina and Bernard David Beth Ann Day and Ben Rinzler De Rode Olifant Magali and Bart Deconinck Patrick and Leila Delarive Barbara Delaune Warren Deloitte Holding B.V. Barbara W. Deméré Stichting Democratie en Media The DeNoon Family Céline and Olivier Diaz Elizabeth Dibbs Dennis Dijkstra Sarah Dinnick and Colin Webster Wilf and Brenda Dinnick Vincent Dirckx SPRL DLA Piper LLP Bob Dorrance and Gail Drummond Kathryn M. Downing DQ&A Media Group Becky Draper William and Phyllis Draper III Lyndell and Daniel Droga Ellen Carol DuBois Ann Dugan and Paul Knight Carolyn and Michiel van Duijvendijk	Edna Dumas Margaret Duncan and John Bisbikis Annie and Peter Duncan dunkel.foundation Yarrow Durbin Kristen and Patrick Durkin Stichting DUX Manuel and Susi Ebner ECN Capital Corp. Aristotle Economon and Hanneke Faber Edlis-Neeson Foundation NFP Elissa Efrogmson and Adnaan Hamid Egeria Barbara Egli Sébastien Eisinger Fares and Adla El Sayegh Frederick Elghanayan The Elizabeth Foundation Rami El-Nimer Gustaf Enbladh Pablo Escobar Lise Evans Ewing Morris & Co. Investment Partners Ltd. Stiftung Exekias Sandra Faire and Ivan Fecan Elizabeth Faraut Jess and Marcia Fardella Marcia Fardella Joseph and Bessie Feinberg Foundation Daniel C. Feldt Dana and Anthony Fenwick Ferring International Center SA Bill Ferris Richard W. Fields and Joanna Shepherd Randi and Bob Fisher Renée B. Fisher Foundation, an advised fund of Silicon Valley Community Foundation Five Arrows Manager Christine and William Fletcher Gerhard Florin Patricia and William Flumenbaum Fondation Edelem Jim Forbes	Robert and Julia Foster Laura Fox and Ben Van de Bunt Anne and Buzz Frahn John B. Frank Louise and James Frankel Mimi and Bud Frankel Franzoli Catering Jim Fraser Kathryn G. Freed Loubna Freih Helena Frick and Patrick Dodd The Robert and Michelle Friend Foundation FThree Foundation Francine and Matthew Gaasenbeek Martha Gabbert Clare Gallagher Sanford and Linda Gallanter Gang, Tyre, Ramer & Brown, Inc. Pamela Gann and David W. Hardee Julia Harris Garg and Sunil Garg Bronwyn Garrity and Scott Woolley Mary and George Garvey La Fondation Emmanuelle Gattuso Sophie Gautié Christa Gebert-Marty Priscilla and Keith Geeslin The David Geffen Foundation Kate Gellert Michael Gendler and Jessica Teich Generation Capital Ltd. David Gengler Meredith C. George Diana and Michael Georgeff The Gerbic Family Foundation Marc Gerdisch Dieter and Rebecca Gericke Nancy and Charles Geschke Yasmine Geukens & Marie-Paule De Vil Gilbert + Tobin Danny and Kathleen Gilbert Gilde Buy Out Partners BV Diane and Mike Giles	Philippe and Miene Gillion Jean Gitlin Gluskin Sheff and Associates Inc. GodEI Sverige AB Rolf Goetze Andrew J. Goffe and Jeff Levin Goldman Sachs & Co. Goldman Sachs Gives Emily Goldner and Mike Humphries The Michael and Leila Gompertz Founders Fund Goodmans LLP Loren and Mike Gordon Kerilee and Martin Gore Mary Gore Antony Gormley Andrew Grabowski Mike and Pilar de Graffenried Richard and Mary L. Gray Damien Green and Tania Romanin-Green Mike and Jacquie Green The Green Family Foundation Nonie Greene and Todd Werby Caroline and Scott Greenhalgh Lisa Gregg and Randy Mitchell Stefan Grieder and Angelo Caltagirone GRIMM Gallery Gerrit Groen Grossman Family Foundation Alex Groth Growth Mantra Richard A. Gruen Lois and Richard Gunther Shanika and Niraj Gupta Oscar Gyllenhammar Jan and Michelle Hagemeier Fund Felix Hagnö Kathryn Haller Olivier Halley Jacques Halpérin Beth and Peter Hammack Wouter & Hendrikje Han-Creolder The Hand Up Foundation (Gerstle Family)	Collier Hands Barbara Haroldson Ann and Matthew Harren The Joan and Clifford Hatch Foundation Serena and Francis W. Hatch Hidehiko Hayashi Carole Shorestein Hays and Jeff Hays Dan Heath Hein Knaapen Management & Advies HEINEKEN International Caitlin Heising and Liz Simons Patrick de Heney Thomas Hermanns Michelle Crowe Hernandez and Christian Hernandez Hesta Services AG Phil Hetteema Simonne and Wayne Hewett Paul and Josefín Hilal David D. Hiller Ulrika and Per Hillström Motomi Hiratsuka Ken Hirsch and Becky Long Toshihiko Hiura Genevieve Hoberman Mariel Hoch and Joseph Walters Syed Hoda Julie and Thomas Høegh Deborah and Larry Hoffman Joseph Holtzman and Carl Skoggard Jenny Holzer Tamisie Honey Judith Hopkinson Ambassador James C. Hormel Cindy and Alan Horn Nicolette Horn Denis Houlès and Elif Aktug Amy L. Hubbard Donald Huber and Mark Fontaine Hans Huber Gitti Hug The Hughes and Day Families Timothy Hughes The Humanist Fund Valeria and Agustin Huneus William Hurt	Susie Hwang and Matt Glickman Susan and Joel Hyatt Nobuyuki Idei Ingrid Indahl Independent Franchise Partners LLP Index Ventures ING Bank N.V. Paul and Mariana Ingersoll Intact Financial Corporation Irell & Manella LLP Mary J. Irwin The Audrey Irmias Foundation for Social Justice Sanae Ishikawa and Richard Georgi Masafumi Ito Richard and Donna Ivey Deone Jackman Philippe-Loïc Jacob Mary and Dan James Todd James Sébastien and Stephanie Janssen Ken C. Janssens Justine Jarvinen and David Heard JEC Foundation Jenner & Block's Content, Media & Entertainment Practice Jill Jensen The Norman and Margaret Jewison Charitable Foundation Johnson Charitable Gift Fund Richard an Catherine Johnson Carter Jones Wolfgang Joop Antonia Josten Cornelia Josten Joy O'Farrell Fellowship Geir Julsvoll Andrew Kaufman and Danielle Truscott-Kaufman Roswitha Keppler-Junius Cheryl and Gary Justice Dawid J. Justus Thomas and Junemarie Justus Eleanor Kagan Andrew Kahn Claudia Kahn and The Help Company	Andrew and Renata Kaldor Mo Kamaly Daisuke Kan Anne Kanard Claude Kandiyoti and Carolyn H. Drake Norbert Karcher Andrea Karg Oliver Karlin Karuna Foundation The Katcher Family Foundation Marina Pinto Kaufman and Stephen Kaufman Arnold & Porter Kaye Scholer LLP Jakob Keel Keker Van Nest & Peters LLP Anita and David Keller Kelley Drye & Warren LLP John W. Kelly Margaret and Barry Kemp Kendall Brill & Kelly LLP Adam Kendall Kevin and Jeanette Kennedy Kering Kristin and Peter Kerman The Key Foundation Morten Kielland Kim Killion and Thomas Schiels Jon Kim Helen L. Kimmel Naonori Kimura Lisa Roberts and Patrick King Patty and Tony King KingSett Capital Man Kinoshita Goldman Sachs Gives at the recommendation of Hideki Kinuhata Thomas and Jana Kirchhofer Michele and Steven Kirsch William H. and Patricia M. Kleh Charles and Jane Klein Herbert G. Kloiber Cécilia and Achim Klüber KMK BETEILIGUNGS- STIFTUNGEN The Knights Family Jabula Foundation	Roanne McGinley Knox and John Knox Katja Knupfer Tom and Leslie Koechlin Martin de Koning Galerie Kornfeld Berlin Danielle and Paul Kraajvanger Ruth Krafft Caitlin Kraft-Buchman Jürgen and Nathalie Krebs Camilla Krefting Dagmar Hesse-Kreindler and Richard Kreindler Joan Kreiss The Jeannette and H. Peter Kriendler Charitable Trust Annette Kroeber-Riel Mark Krueger Kuehlthau Family Foundation Anil and Minnie Kumar Yojiro Kunitomo Hollis Kurman and Gert Jan van der Hoeven Michael La Roche Laurie Kraus Lacob Valérie Lafarge-Sarkozy Alessandro and Ulrica Lanaro The Edith Lando Charitable Foundation Hans Landolt Erik Langaker and Clementine Munch Thore Cathy Langdon and Nick Williams Nancy Langsan Dorothy Largay and Wayne Rosing Ulrika Laurin Missy D. Lavender Eric Lax and Karen Sulzberger LDIC Inc. Lisa Y. Lee and Adam Bush Laurent and Amélie Legein Frank Leijdesdorff and Simone Brummelhuis Shari Leinwand Rob Lengacher Lenz et Staehelin Leo Model Foundation Julie and Robert Lepri Tom Levine Elizabeth Levitt Naila and Peter Lewis	Thomas and Nancy Leysen Susan and Bernard Liautaud Robert Lieff Pieter Lighthart and Mark Paauw The Liman Foundation Wolfgang and Martine de Limburg Stirum Jacqueline Lion-Cachet Lobo & DeRizzo Advogados Hans-Dieter Lochmann Inès Lombard Tougane Loumeau and Didier G. Martin Loyens & Loeff N.V. Anonymous Leatrice Luria Ron Lushing and Dan Reid Helen Lynch and Helen Bauer M Thorviks Rederi AS Sheena Macdonald and Phil Schmitt Elliott MacDougall Pierre and Caroline Macharis Michael MacMillan and Cathy Spoel Nicolas Macquin Anne Nacey Maggioncalda and Jeffrey Maggioncalda Bruno Mancica and Franziska Bodmer Mancica Susan and Lewis Manilow Renato and Négar Marazzi Danièle Kapel Marcovici Marcus Family Foundation Steve Marenberg and Alison Whalen Marietta and Andrew Romay Foundation Jane Marquard and Dennis Karp Jonathan Marshall Sarah and Charles Martin Claire Williams Martinez and Eric Martinez Patrick and Siska Maselis Fiona Mason and James Kelly Alex and Adla Massoud	Mastercard International Susanne and Sven Mattsson Mayer Brown Services MBP Solutions Ltd Wendy and Tim McAdam Martha McCain Ashley F.T. McCall and Avery McCall Cheryl and Sam McFarland Linda McKenzie McKinsey & Co. McKinsey & Co. Canada McKinsey Australia and New Zealand McLean Smits Family Foundation Mark and Judy McLean Michele and John McNellis Tara Meehan Terence Meehan Eric Mégevand Gordana Mégevand Toni and Marina Meggle Warda Shazadi Meighen and Hugh Meighen Patrick and Michelle Meneley Adelaide de Menil Richard Merkin Christopher Mesnooh Patrick and Ondine Mestdagh Dorothee and Konstantin Mettenheimer Pierre Meyer Charles F. Michaels Nicole Miescher MIG Verwaltungs AG, Michael Motschmann Christopher D. Miller Walter E.D. Miller James Mintz and Deborah Stewart Misereor e.V. Harald and Jeanette Mix M J Chelsea Fund LLC Moby Dick II SA Robert A. Moeser Louise Mohn Carolina Mojto and Ulrich Wilhelm Cathy Crane Moley and Andrew Moley John Molloy Jessica Moment Frank and Petra Monstrey
-----------------------------------------------------------------------------------------------------------------------------------------------------------------------------------------------------------------------------------------------------------------------------------------------------------------------------------------------------------------------------------------------------------------------------------------------------------------------------------------------------------------------------------------------------------------------------------------------------------------------------------------------------------------------------------------------------------------------------------------------------------------------------------------------------------------------------------------------------------------------------------------------------------------------------------------------------------------------------------------------------------------------------------------------------------------------------------------------------------------------------------------------------------------------------------------------------------------------------------------------------------------------	-----------------------------------------------------------------------------------------------------------------------------------------------------------------------------------------------------------------------------------------------------------------------------------------------------------------------------------------------------------------------------------------------------------------------------------------------------------------------------------------------------------------------------------------------------------------------------------------------------------------------------------------------------------------------------------------------------------------------------------------------------------------------------------------------------------------------------------------------------------------------------------------------------------------------------------------------------------------------------------------------------------------------------------------------------------------------------------------------------------------------------------------------------------------------------------------------------------------	----------------------------------------------------------------------------------------------------------------------------------------------------------------------------------------------------------------------------------------------------------------------------------------------------------------------------------------------------------------------------------------------------------------------------------------------------------------------------------------------------------------------------------------------------------------------------------------------------------------------------------------------------------------------------------------------------------------------------------------------------------------------------------------------------------------------------------------------------------------------------------------------------------------------------------------------------------------------------------------------------------------------------------------------------------------------------------------------------------------------------------------------------------------------------------------------------------------------------------------	------------------------------------------------------------------------------------------------------------------------------------------------------------------------------------------------------------------------------------------------------------------------------------------------------------------------------------------------------------------------------------------------------------------------------------------------------------------------------------------------------------------------------------------------------------------------------------------------------------------------------------------------------------------------------------------------------------------------------------------------------------------------------------------------------------------------------------------------------------------------------------------------------------------------------------------------------------------------------------------------------------------------------------------------------------------------------------------------------------------------------------------------------------------------------------------------------	---------------------------------------------------------------------------------------------------------------------------------------------------------------------------------------------------------------------------------------------------------------------------------------------------------------------------------------------------------------------------------------------------------------------------------------------------------------------------------------------------------------------------------------------------------------------------------------------------------------------------------------------------------------------------------------------------------------------------------------------------------------------------------------------------------------------------------------------------------------------------------------------------------------------------------------------------------------------------------------------------------------------------------------------------------------------------------------------------------------------------------------------------------------------------------------------------------------	------------------------------------------------------------------------------------------------------------------------------------------------------------------------------------------------------------------------------------------------------------------------------------------------------------------------------------------------------------------------------------------------------------------------------------------------------------------------------------------------------------------------------------------------------------------------------------------------------------------------------------------------------------------------------------------------------------------------------------------------------------------------------------------------------------------------------------------------------------------------------------------------------------------------------------------------------------------------------------------------------------------------------------------------------------------------------------------------------------------------------------------------------------------------------------------------------------------	-----------------------------------------------------------------------------------------------------------------------------------------------------------------------------------------------------------------------------------------------------------------------------------------------------------------------------------------------------------------------------------------------------------------------------------------------------------------------------------------------------------------------------------------------------------------------------------------------------------------------------------------------------------------------------------------------------------------------------------------------------------------------------------------------------------------------------------------------------------------------------------------------------------------------------------------------------------------------------------------------------------------------------------------------------------------------------------------------------------------------------------------------------------------------------	------------------------------------------------------------------------------------------------------------------------------------------------------------------------------------------------------------------------------------------------------------------------------------------------------------------------------------------------------------------------------------------------------------------------------------------------------------------------------------------------------------------------------------------------------------------------------------------------------------------------------------------------------------------------------------------------------------------------------------------------------------------------------------------------------------------------------------------------------------------------------------------------------------------------------------------------------------------------------------------------------------------------------------------------------------------------------------------------------------------------------------------------------------------------------------------------------------------------------------------------------------------------	-----------------------------------------------------------------------------------------------------------------------------------------------------------------------------------------------------------------------------------------------------------------------------------------------------------------------------------------------------------------------------------------------------------------------------------------------------------------------------------------------------------------------------------------------------------------------------------------------------------------------------------------------------------------------------------------------------------------------------------------------------------------------------------------------------------------------------------------------------------------------------------------------------------------------------------------------------------------------------------------------------------------------------------------------------------------------------------------------------------------------------------------------------------------------------------------------------------	---------------------------------------------------------------------------------------------------------------------------------------------------------------------------------------------------------------------------------------------------------------------------------------------------------------------------------------------------------------------------------------------------------------------------------------------------------------------------------------------------------------------------------------------------------------------------------------------------------------------------------------------------------------------------------------------------------------------------------------------------------------------------------------------------------------------------------------------------------------------------------------------------------------------------------------------------------------------------------------------------------------------------------------------------------------------------------------------------------------------------------------------------------------------------------------------------------------------------------------

Bernard and Sarah Moortgat	Susan Okie Bush O'Melveny & Myers LLP	Richard and Ann Pozen Family Fund	Rosenberry Charitable Term Trust	Marc M. Seltzer / Susman Godfrey L.L.P.	Sony Music Entertainment Canada Inc.	Yoshikazu Tanaka	Inge and Philip van Verschuer	Julia West and Richard Wernham	Philippe and Roxane Ziegler
Michael and Atalanti Moquette	Liz and David Ondaatje and Family	Abby Pratt	Bettina and Peter Rosenblatt	Nancy and Greg Serrurier	Cindy and Nathaniel Soper	John and Gisela Tandberg	Axel Vervoordt NV	Debra Wetherby	Ziffren Brittenham LLP
Akira Morikawa	Jean Oppenheimer	Elissa Preheim	Ann Rosewater	Jean-Louis and Perla Servan-Schreiber	Mamoru Taniya	Mamorou Taniya	VII Photo Agency LLC	Mark Wetzels and Brieke Hillen	Maria and Ralph Ziman
Kiyomitsu Moroto	L'Oréal	PricewaterhouseCoopers / Philippe Degonzague	Rudolf Roth and Wendy Olum Roth	Evelyne Sevin and Pascal Macioce	Salima Taplin and Riaz Taplin	Salima Taplin and Riaz Taplin	The Viola Fund	Jason and Robyn Wheeler	Uwe Zöllner
Isolde and Joel Motley	Natalie Orfalea and Lou Buglioli	Carol Prins and John Hart	Steven Rothenberg	Henri Seydoux	Koichi Tateno	Koichi Tateno	Anthony Vischer	G. Marc and Tracy Whitehead	
Maryanne Mott	Anna and Johan Orring	The Promise Institute for Human Rights at UCLA School of Law	Aude Rotman	Shardul Shah	Phoebe Taubman and Craig Nerenberg	Phoebe Taubman and Craig Nerenberg	Bernhard H.L. Vischer	Franklin A. Thomas and Kate R. Whitney	
Gary and Donna Naftalis	William M. Osborne	Stichting Promising Young People	Thomas Rottner and Cecilie Astrup	Donna E. Shalala	Simon and Lea Taylor	Simon and Lea Taylor	Enzo Viscusi	Barbara Wiedmann	
Thomas Nagel	Niklas Östberg	Publicis Groupe Services	Harley Rouda Jr. and Kaira Sturdivant	David Shapiro and Liz Lange	TD Bank Group	TD Bank Group	Kathryn and Robert Vizias	Thomas Wiegand and Christine Klaiber-Wiegand	
Wibecke Nagell-Erichsen	Taro Otsuka	Stacy and Ron Pulice	Rouda	Isaac Shapiro	Tedworth Charitable Trust	Tedworth Charitable Trust	Isabell und Dr. Friedrich Vogel-Stiftung	Malcolm Hewitt	
Richard and Gaby Nahmani	Pace Family Foundation	David and Leslie Puth	RTL Belgium	Shalini Sharma and Pradip Patiath	Mathias and Silvia Thielen	Mathias and Silvia Thielen	Richard and Philippa Vogel	Wiener Foundation	
Haruo Nakamura	Sibylle Pacher-Theinburg	Quinn Emanuel Urquhart Oliver & Hedges, LLP	RTL Nederland	Dewey K. Shay and Carolyn Shook	Guy and Marina Thouin	Guy and Marina Thouin	Stichting Vogelgezang	Wikborg, Rein & Co. Advokatfirma	
Naho Nakashima	Jennifer and Lou Pagnutti	Megan Quitkin	Nancy and Miles Rubin	Loy Sheflott and Stuart Russell	The Three Sisters Foundation	The Three Sisters Foundation	Michael J. Volkovitsch	Patricia Williams and Kenneth Turan	
Natembea Foundation	Lucie and Joe Pal	Alex Rao	Sally Hechinger Rudoy	Romita Shetty and Nasser Ahmad Foundation, Inc.	Darren Throop	Darren Throop	Paul E. Von Kuster	Michael and Prue Williams	
Bruno Nauer	Joe Palca and Kathy Hudson	Ahna Rao	Franck Ruimy	Shum Yourkoutiotis Fund at the Toronto Foundation	Leslie Dennis Tolan	Leslie Dennis Tolan	Peter Vonarburg and Daniel Hossli	Barbara and Edward Wilson	
Sandra van Neerbos	Pangea Property Partners AS	Marguerite and Pradeep Rao	Cris Russell and Ben Heineman	Maria Sainz	Kelli and Steffan Tomlinson	Kelli and Steffan Tomlinson	Peter van der Vorst and Sander Schreurs	Winmar AS	
Sylvia Neil	Patricia Papper	Jason and Eva Rapp	Justin and Joanna Ryan	Shibley and Tony Salewski	James Tong	James Tong	Lucas Vos	Raoul Witteveen	
Tracy Neistadt and Mike Schonenberg	Paramount Pictures	Hiroko Rawald	Manuel Rybach	Shabnum and Sunil Sanghvi	Torkap AS	Torkap AS	Marie and Craig Vought	Wolff Family Foundation	
Shirley Nelsen	Parcom Capital Management BV	Felice Rebol and John Koval	Shana Ward Ryzowy	Philippe and Hélène Sanlaville	Frederick Towfigh	Frederick Towfigh	Jayson Vowles	Andrew E. Wolff	
Eliane and Armand Neukermans	Alessandro and Sabine Parenti	Bill Resnick and Michael J. Stubbs	Sybille Sabet	Philippe and Hëlène Sanlaville	Veena Trehan	Veena Trehan	Liza and Paul Wachter	Frances L. Wolff	
New Latitude Capital	Julie and William Parish	Eric and Esme Sarasin	Hideya Sadanaga	Eric and Esme Sarasin	Trion, a Marsh & McLennan Agency, LLC	Trion, a Marsh & McLennan Agency, LLC	Isabelle and David P. Wagener	Wood, Smith, Henning, & Berman LLP	
Stanley Newman and Dr. Brian Rosenthal	Parrot SA	Hideki Sato	Maria Sainz	Hideki Sato	Eric Tripp and Maria Smith	Eric Tripp and Maria Smith	Sue Aldrich Wagner and D. William Wagner	The Woods and Gil Family Foundation	
Newman's Own Foundation	Andrew Pataki	Patrick Sayer	Shibley and Tony Salewski	Patrick Sayer	Cecilia af Trolle and Adam Lewis	Cecilia af Trolle and Adam Lewis	Takeshi Wakamatsu	Ed and January Woods	
Craig Newmark	G. Scott and Sarah Paterson	Jerome Scanlan	Shabnum and Sunil Sanghvi	Jerome Scanlan	Jack Tull	Jack Tull	Walde & Partner Immobilien	Laure L. Woods	
Philanthropies	Berniece and Pat Patterson	Jean and David Scheible	Sunil Sanghvi	Jean and David Scheible	Turenne Foundation	Turenne Foundation	Julianne and Scott Wagner	Chiona Xanthopoulou-Schwarz	
James W. Nickel	Elizabeth R. Patterson	Charles Scheidt	Philippe and Hëlène Sanlaville	Charles Scheidt	Twig Foundation, Inc	Twig Foundation, Inc	Sue Aldrich Wagner and D. William Wagner	Sakiko Yamada	
Andreas Nidecker	PAX	Peter Schindler	Eric and Esme Sarasin	Peter Schindler	UBS SA	UBS SA	D. William Wagner	Kotaro Yamagishi	
The Niemeyer Family Foundation	Payden & Rygel	Sabrina und Udo Schloemer	Hideki Sato	Sabrina und Udo Schloemer	Shigeki Uchiyama	Shigeki Uchiyama	William Wagner	Seiichiro Yamamoto	
Kristiaan Nieuwenburg	Pedrazzini Yacht- und Bootswerft	Christian Franz Schmitz	Patrick Sayer	Christian Franz Schmitz	Toshiro Ueyanagi	Toshiro Ueyanagi	Julianne and Scott Wagner	Shinichi Yamamoto	
Ernst Nijkerk	John and Julie Pellegrini	Melissa and Christian Schneider-Sickert	Eric and Esme Sarasin	Melissa and Christian Schneider-Sickert	Mindy and Kirk Uhrlaub	Mindy and Kirk Uhrlaub	Sue Aldrich Wagner and D. William Wagner	Masakazu Yanagisawa	
Björn and Sandra Nilsson	Clark Pellett and Robert Kohl	Waltraud and Gerrit van Schoonhoven	Hideki Sato	Waltraud and Gerrit van Schoonhoven	William D. Unger	William D. Unger	Sue Aldrich Wagner and D. William Wagner	Seiji Yasubuchi	
Amer Nimr	Robert Kohl	Chara Schreyer and Gordon Freund	Patrick Sayer	Chara Schreyer and Gordon Freund	Union Gruppen AS	Union Gruppen AS	Sue Aldrich Wagner and D. William Wagner	Josh and Jo Yeldham	
Daniel L Nir and Jill E Braufman Family Foundation Inc	Pepperell	Ulrik Schulze and Natascha Schill Schulze	Eric and Esme Sarasin	Ulrik Schulze and Natascha Schill Schulze	Universal Music Canada	Universal Music Canada	Sue Aldrich Wagner and D. William Wagner	Naoto Yotsugi	
Frank Noël-Vandenbergh	Cesar Perez	Jos Schut and Aart van Rooij	Eric and Esme Sarasin	Jos Schut and Aart van Rooij	Tom and Janet Unterman	Tom and Janet Unterman	Sue Aldrich Wagner and D. William Wagner	Dr. Lawrence You	
Nommontu Foundation	Cristina Perez-Hernandez	Maria Seferian	Eric and Esme Sarasin	Maria Seferian	Masato Uruma	Masato Uruma	Sue Aldrich Wagner and D. William Wagner	Kelle Young and Arvind Rajan	
Barbara and Rolf Nonnenmacher	Susan Pernick	Segal McCambridge Singer & Mahoney, Ltd.	Eric and Esme Sarasin	Segal McCambridge Singer & Mahoney, Ltd.	Utting Research	Utting Research	Sue Aldrich Wagner and D. William Wagner	Donald J. Zack	
Elisabeth Nothmann Stiftung	David Pierce-Jones	Georg and Patsy von Segesser	Eric and Esme Sarasin	Georg and Patsy von Segesser	Valkyrie Corporate Advisory Partners Pty Limited	Valkyrie Corporate Advisory Partners Pty Limited	Sue Aldrich Wagner and D. William Wagner	Peter Andreas Zahn	
Jacqueline Novogratz	Foundation of the Jewish Community Federation		Eric and Esme Sarasin		Van Doorne Advocaten Notarissen Fiscalisten	Van Doorne Advocaten Notarissen Fiscalisten	Sue Aldrich Wagner and D. William Wagner	Arshad Zakaria	
Stasia Ann Obremskey	Marc and Margot Pinto		Eric and Esme Sarasin		Beth Van Schaack and Brent Lang	Beth Van Schaack and Brent Lang	Sue Aldrich Wagner and D. William Wagner	Fareed Zakaria	
Hans Oerlemans	PointNorth Capital		Eric and Esme Sarasin		Johan and Griet Vandendriessche	Johan and Griet Vandendriessche	Sue Aldrich Wagner and D. William Wagner	Rachel and Mansoor Zakaria	
Off Piste AS	Peter and Alicia Pond		Eric and Esme Sarasin		Dianne and Daniel Vapnek	Dianne and Daniel Vapnek	Sue Aldrich Wagner and D. William Wagner	Olivia Zappala	
Brendan O'Flynn and Angie Murphy	Leah Pope		Eric and Esme Sarasin		Piet van der Slikke and Sandra Swelheim	Piet van der Slikke and Sandra Swelheim	Sue Aldrich Wagner and D. William Wagner	Anna Zara and Robert M. English	
Doug Ogden	Postcode Lotterie		Eric and Esme Sarasin		Rebecca C. Swan	Rebecca C. Swan	Sue Aldrich Wagner and D. William Wagner	Zac and Amanda Zeitlin	
Ralph E. Ogden Foundation	DT gGmbH		Eric and Esme Sarasin		Piet van der Slikke and Sandra Swelheim	Piet van der Slikke and Sandra Swelheim	Sue Aldrich Wagner and D. William Wagner	DIE ZEIT	
OHRPAX GmbH	Brenda R. Potter		Eric and Esme Sarasin		Reena and Harit Talwar	Reena and Harit Talwar	Sue Aldrich Wagner and D. William Wagner	Kristin Zethren and Chic Wolk	
Takaaki Ohta	Lynn Povich		Eric and Esme Sarasin		Hitoshi Tanaka	Hitoshi Tanaka	Sue Aldrich Wagner and D. William Wagner		
Mari Okada			Eric and Esme Sarasin				Sue Aldrich Wagner and D. William Wagner		

STATEMENT OF ACTIVITIES

For the fiscal year ended 30 June 2018

	USD			UNAUDITED € (1.19)*		
	UNRESTRICTED	TEMPORARILY RESTRICTED	2018 FY TOTALS	UNRESTRICTED	TEMPORARILY RESTRICTED	2018 FY TOTALS
PUBLIC SUPPORT AND REVENUE						
Public Support						
Contributions and grants	16,207,689	45,437,935	61,645,624	13,604,656	38,140,384	51,745,040
Special events	19,521,882	(3,272)	19,518,610	16,386,573	(2,746)	16,383,827
Less: direct cost of special events	(2,522,819)	(68,513)	(2,591,331)	(2,117,642)	(57,509)	(2,175,151)
Total Public Support	33,206,752	45,366,150	78,572,902	27,873,588	38,080,128	65,953,716
Revenue						
Net investment income (loss)	1,817,643	11,559,795	13,377,437	1,525,721	9,703,236	11,228,957
Publications	24,786	—	24,786	20,805	—	20,805
Other	133,151	12,849	146,000	111,767	10,785	122,552
Total Revenue	1,975,580	11,572,644	13,548,224	1,658,292	9,714,021	11,372,314
Net assets released from restrictions	44,412,289	(44,412,289)	—	37,279,462	(37,279,462)	—
Total Public Support and Revenue	79,594,621	12,526,505	92,121,126	66,811,342	10,514,688	77,326,030
EXPENSES						
Program Services						
Africa	6,704,531	—	6,704,531	5,627,751	—	5,627,751
Americas	2,876,085	—	2,876,085	2,414,172	—	2,414,172
Asia	7,415,540	—	7,415,540	6,224,568	—	6,224,568
Europe and Central Asia	5,254,719	—	5,254,719	4,410,786	—	4,410,786
Middle East and North Africa	6,320,774	—	6,320,774	5,305,627	—	5,305,627
United States	2,789,401	—	2,789,401	2,341,410	—	2,341,410
Children's Rights	3,019,293	—	3,019,293	2,534,380	—	2,534,380
LGBT	1,838,718	—	1,838,718	1,543,411	—	1,543,411
International Justice	1,798,232	—	1,798,232	1,509,428	—	1,509,428
Women's Rights	3,341,676	—	3,341,676	2,804,987	—	2,804,987
Other Programs	16,379,198	—	16,379,198	13,748,620	—	13,748,620
Total Program Services	57,738,169	—	57,738,169	48,465,142	—	48,465,142
Supporting Services						
Management and general	7,506,313	—	7,506,313	6,300,763	—	6,300,763
Fundraising	16,404,424	—	16,404,424	13,769,794	—	13,769,794
Total Supporting Services	23,910,737	—	23,910,737	20,070,558	—	20,070,558
Total Expenses	81,648,906	—	81,648,906	68,535,699	—	68,535,699
Change in Net Assets before foreign currency translation (loss) gain	(2,054,286)	12,526,505	10,472,219	(1,724,357)	10,514,688	8,790,331
Cummulative Translation Adjustment	(459,883)	366,719	(93,164)	(386,024)	307,822	(78,201)
Net Assets:						
Beginning of Year	21,417,659	191,636,666	213,054,325	17,977,880	160,858,895	178,836,775
End of Year	18,903,490	204,529,890	223,433,380	15,867,499	171,681,406	187,548,905

STATEMENT OF FINANCIAL POSITION

For the fiscal year ended 30 June 2018

	USD		€ (1.17)*	
	2018 FY		2018 FY	
ASSETS				
Cash and cash equivalents	37,490,107		32,042,826	
Investments	157,199,860		134,358,855	
Contributions receivable, net	29,541,204		25,248,893	
Prepaid expenses and other assets	2,615,088		2,235,118	
Fixed assets, net	5,789,370		4,948,180	
Total Assets	232,635,629		198,833,871	
Liabilities and Net Assets				
Liabilities				
Accounts payable and accrued expenses	7,336,520		6,270,530	
Deferred rent	1,865,728		1,594,639	
Total Liabilities	9,202,248		7,865,169	
Commitments and contingencies				
Net Assets				
Unrestricted	18,903,490		16,156,829	
Temporarily restricted	204,529,890		174,811,872	
Total Net Assets	223,433,380		190,968,701	
Total Liabilities and Net Assets	232,635,628		198,833,870	

A complete version of the Human Rights Watch financial statements for the fiscal year ended 30 June 2018 is available at: [HRW.org/financials](http://hrw.org/financials)

*Financial statements for the year ended 30 June 2018 were translated to Euros using a blended rate derived by Human Rights Watch. This method is not in accordance with US GAAP and has not been audited.

Cover Photo:

Girls receive lessons in a tent at a government school in Kabul, Afghanistan. According to the most optimistic statistics, only slightly more than half of Afghan girls are in school; by the time they reach 15, only a third remain. © 2017 Paula Bronstein for Human Rights Watch

Michele Alexander, Deputy Executive Director, Development & Global Initiatives

John Mix, Senior Director, Marketing

Nicholas Ruiz, Senior Creative Manager

Nicole Vloeimans, Senior Grantwriter

Donor Recognition Team:

Howard Marmorstein

Nadine Swibenko

Translation Team:

Cecile Avena

Jungmi Cho

Gen Hidari

Sophie Hilal

Basa Koga

Valérie Lombard

Léa Pernot

Nesrin Thomsen

Agnes Tkotz

Esther Witt

Jeff Zimmerman Design, Designer

The Graphic Arts Studio, Printer

350 Fifth Avenue, 34th Floor

New York, NY 10118-3299

Human Rights Watch Annual Report 2018 is inclusive of the organization's work and reflective of its supporters from 1 July 2017 to 30 June 2018.



Human Rights Watch
meets all standards of the
Better Business Bureau
Wise Giving Alliance

Addendum to Annual Report for Fiscal Year Ended June 2018 | January 2019

Human Rights Watch earned a reputation as a leading human rights organization because of our ability to respond quickly and effectively to a broad spectrum of rights concerns—from discrimination to crimes against humanity. Our researchers and advocates act as sentinels for rights abuses in more than 90 countries. Informed by the priorities of our local partners, we investigate rights violations and publish our findings through our unrivaled media networks. To build pressure for change, we forge strategic coalitions to maximize our impact and leverage the collective might of our voices.

This methodology yields significant impact. Examples of accomplishments from July 2017 through June 2018 include the following:

- When 700,000 **Rohingya** fled Myanmar to escape ethnic cleansing, the Myanmar government tried to dismiss as untrustworthy their accounts of atrocities. We corroborated refugees' testimony in neighboring Bangladesh with satellite imagery to show the burning and subsequent bulldozing of some 350 Rohingya villages. Largely as a result of this work by Human Rights Watch and our partners, the United Nations launched an investigation and Western governments imposed targeted sanctions on some of the army generals responsible. In September 2018, our sustained advocacy persuaded the UN Human Rights Council to create an investigative mechanism to collect evidence and build cases for future prosecutions.
- In September 2017, we built decisive momentum for the creation of an international inquiry into all sides' abuses in the war that has produced a grave humanitarian crisis in **Yemen**. We organized support and published a joint letter with 67 global, regional, and Yemeni organizations, which ultimately led the UN Human Rights Council to authorize an independent investigation, in the face of fierce opposition from Saudi Arabia, which led the coalition that has carried out scores of unlawful airstrikes in Yemen. In September 2018, the Saudi-led coalition sought to block the renewal of the investigation's mandate. As the Council debated the renewal, we worked closely with our partners to brief governments and coordinate the release of relevant materials. This joint effort helped ensure the Council stood up to Saudi pressure and renewed the international investigation's mandate.
- In **Uzbekistan**, our report on forced labor in the cotton sector helped prompt the release of some 200,000 workers throughout the country. A day after the president of the World Bank cited our research in a meeting with the president of Uzbekistan, the Uzbek government ordered officials to end the practice of forcing students, educators, and medical workers to pick cotton.
- Our December 2017 report and January 2018 digital campaign—aided by our first-ever use of a drone—focused on the health impacts of burning garbage dumps in **Lebanon**. We helped move Lebanon's parliament to adopt a national solid waste management law banning open burning. Lebanon's cabinet also released US\$20 million to support the closing or rehabilitation of open dumps.

HUMAN
RIGHTS
WATCH

HRW.org