	GLOBAL STANDARD	Page 1 of 7
	SUPPORT FOR POLE MOUNTED SWITCH-DISCONNECTOR AND SELF PROTECTED VOLTAGE TRANSFORMER	GSCS006 Rev. 1 31/05/2016


SUPPORT FOR POLE MOUNTED SWITCH-DISCONNECTOR AND SELF PROTECTED VOLTAGE TRANSFORMER

Countries' I&N	Elaborated by
Brazil	V. Carvalho Robadey
Chile	H. Herrera Sepúlveda
Colombia	L. Vargas Rodriguez
Iberia	J. Gonzalez Cortizo
Italy	L. Foddai
Peru	R. Sánchez
Romania	M. Domnicu / F. Dobre

	Elaborated by	Verified by	Approved by
Solution Development Center	L. Foddai	R. Emma	I. Gentilini
Global I&N – NT/NCS	-	N. Cammalleri G. Egea Brufau	F. Giammanco


This document is intellectual property of Enel Spa; reproduction or distribution of its contents in any way or by any means whatsoever is subject to the prior approval of the above mentioned company which will safeguard its rights under the civil and penal codes. This document is for Internal Use.

Revision	Data	List of modifications
00	22-01-2016	First emission.
1	31-05-2016	Revision of the dimensions of the reinforcing plates and the distance between the sleepers.

	GLOBAL STANDARD	Page 2 of 7
	SUPPORT FOR POLE MOUNTED SWITCH-DISCONNECTOR AND SELF PROTECTED VOLTAGE TRANSFORMER	GSCS006 Rev. 1 31/05/2016

Contents

1	SCOPE	3
2	FIELD OF APPLICATION	3
3	REFERENCE LAWS AND STANDARDS	3
3.1	International standards	3
4	TYPE OF STEEL	3
5	UNIT OF MEASURE	3
6	COMPONENTS	4
7	TESTS	7
7.1	GENERAL	7
7.2	TYPE TESTS	7
7.3	ACCEPTANCE TESTS	7

	GLOBAL STANDARD	Page 3 of 7
	SUPPORT FOR POLE MOUNTED SWITCH-DISCONNECTOR AND SELF PROTECTED VOLTAGE TRANSFORMER	GSCS006 Rev. 1 31/05/2016

1 SCOPE

This Global Standard applies to the support of the following equipments to be installed on pole: MV SF6 insulated switch-disconnectors and outdoor MV voltage transformers to power supply auxiliary services.

This Global Standard applies to the Distribution Companies of Enel Group listed below:

- Brazil
- Chile
- Colombia
- Perù
- Iberia
- Italy
- Romania

2 FIELD OF APPLICATION

These requirements apply to the support for equipment pole of MV overhead lines

3 REFERENCE LAWS AND STANDARDS

3.1 International standards

Unless otherwise specified the following standards applies:

- EN 10025 for the steel
- ISO 1461:2009 for hot dip galvanized
- ISO 3834 for the welding
- ISO 6892
- ISO 2859


4 TYPE OF STEEL

S235JR for the profiled steel

Austenitic stainless steel for the band and buckles

5 UNIT OF MEASURE

Number of pieces

	GLOBAL STANDARD	Page 4 of 7
	SUPPORT FOR POLE MOUNTED SWITCH- DISCONNECTOR AND SELF PROTECTED VOLTAGE TRANSFORMER	GSCS006 Rev. 1 31/05/2016

6 COMPONENTS

All the dimensions are in mm

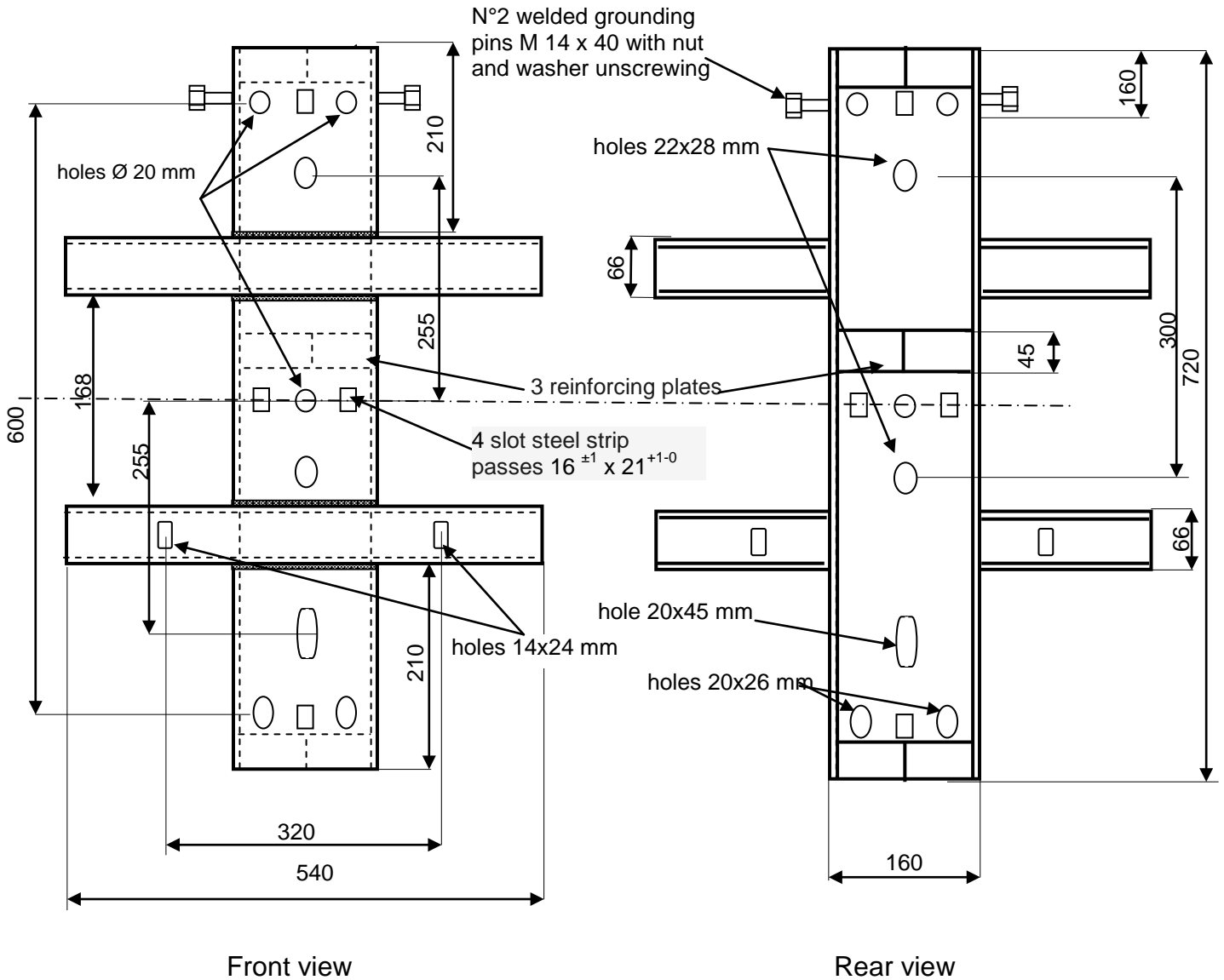
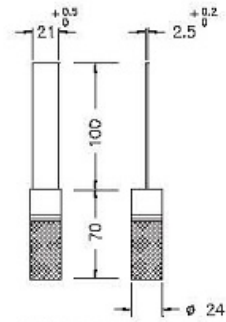


Plate thickness of the profiles : 4 mm
S235JR steel galvanized according to UNI EN ISO 1461: 2009

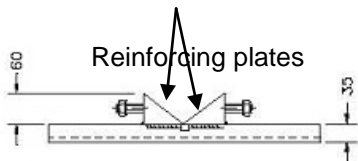


SUPPORT FOR POLE MOUNTED SWITCH-DISCONNECTOR AND SELF PROTECTED VOLTAGE TRANSFORMER

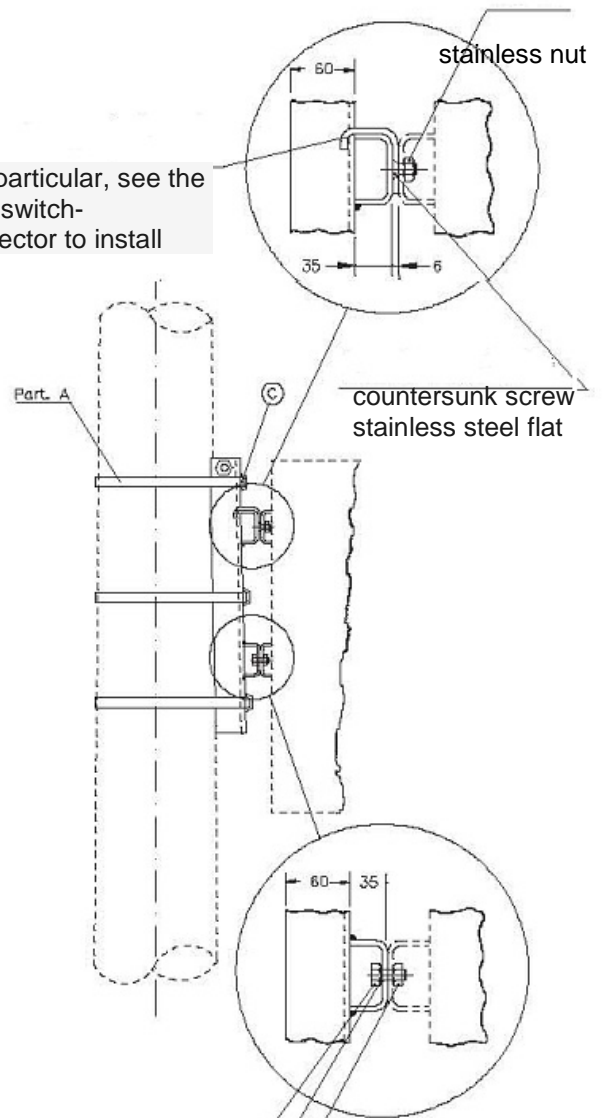
GSCS006
Rev. 1
31/05/2016



Caliber for slot steel strip passes




for this particular, see the table of switch-disconnector to install



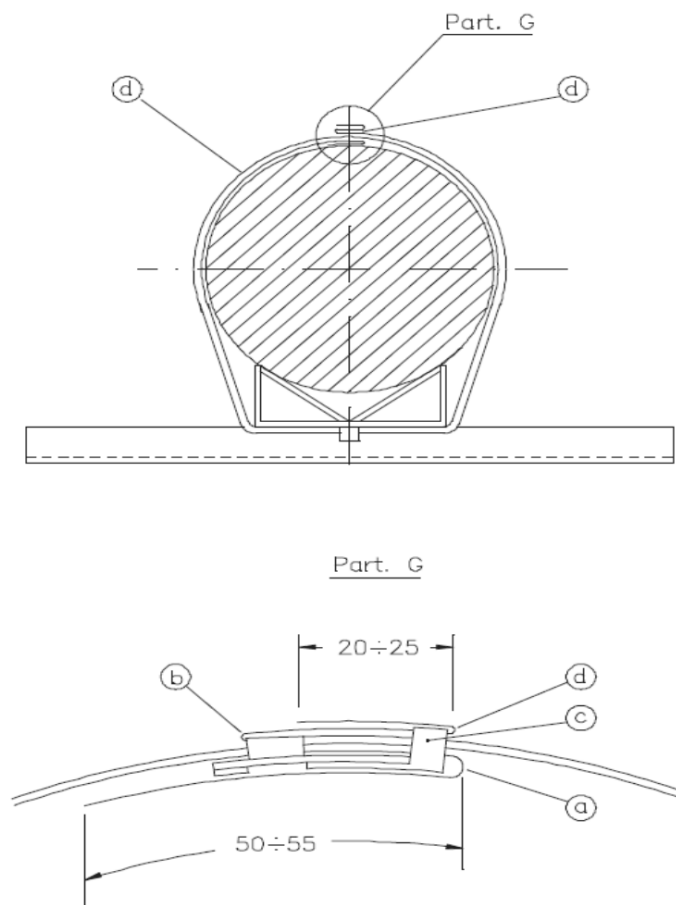
hexagon bolt M 12x30
stainless steel for hole Ø 14

flat washer stainless steel
thickness 4 mm Ø 12,5 mm

Nut M12 stainless steel

	GLOBAL STANDARD	Page 6 of 7
	SUPPORT FOR POLE MOUNTED SWITCH-DISCONNECTOR AND SELF PROTECTED VOLTAGE TRANSFORMER	GSCS006 Rev. 1 31/05/2016


Part. A : fastening buckles



Materials: stainless steel band DS3230/2 ; buckle for stainless steel band DS3240/2

N.B. the buckle is to be mounted on the opposite side of the support (as shown in the figure)

1. Bending to 180° to perform with pliers tight strong. Avoid hammering in order not to damage material.
2. Bending to 180° to be performed with the use of only tool tensioner. Avoid hammering may damage the material. During this operation, gradually loosen the traction during bending of the strip to avoid excessive engravings.
3. flap
4. Bending to 180° to be performed with forceps and lightweight hammering

	GLOBAL STANDARD	Page 7 of 7
	SUPPORT FOR POLE MOUNTED SWITCH- DISCONNECTOR AND SELF PROTECTED VOLTAGE TRANSFORMER	GSCS006 Rev. 0 09/11/2015

7 TESTS

7.1 GENERAL

Tests are classified into:

- Type tests
- Acceptance tests

7.2 TYPE TESTS

1. **Visual inspection** : checking erroneous characteristics of the support; not allowed sharp corners, points and malformations and welding should be performed with continuous welding bead and minimum thickness not less than the thinnest of the elements to be connected according to ISO 3834.
2. **Checking dimensions** : Check if tolerances are no exceed, direct verification by means tools of the support dimensions.
3. **Check of the thickness of the galvanizing** :in according to ISO 1461:2009
4. **Material testing**: It must verify that the materials used shall be those contained in this specific.

For all tests negative results are not allowed.

7.3 ACCEPTANCE TESTS

1. **Visual inspection** : checking erroneous characteristics of the support; not allowed sharp corners, points and malformations and welding should be performed with continuous seam welding and minimum thickness not less than the slim of the elements to be connected according to ISO 3834
2. **Checking dimensions** : Check if tolerances are no exceed, direct verification by means tools of the support dimensions.
3. **Check of the thickness of the galvanizing** : in according to ISO 1461:2009
4. **Material testing**: It must be verified that the materials used shall be those contained in this specific through mechanical tensile test according to ISO 6892-1:2009.

All acceptance tests must verify in according to ISO 2859 "Sampling procedures for inspection by attributes.

For all tests negative results are not allowed.