

School Realities

Published January 2020
ISBN: 978-1-4315-3360-2
Enquiries: 012 357 3676

In 2019, there were 13 041 198 learners in ordinary public and independent schools (hereinafter collectively referred to as ordinary schools) in South Africa, who attended 24 998 schools and were served by 444 857 educators (see Tables 2 and 3). These data are from databases uploaded on Learner Unit Record Information and Tracking System (LURITS) and Provincial Data Warehouses as at August 2019. Approximately 99.9% of functional ordinary schools were uploaded. No imputation was done on the data. The figures in this publication are preliminary, and the final figures will be published in the more comprehensive Education Statistics in South Africa 2019.

Table 1: List of abbreviations

| | | | |
|------------|--------------------------------|------------|------------------------|
| ECD | Early Childhood Development | LER | Learner-Educator Ratio |
| ESR | Educator-School Ratio | LSR | Learner-School Ratio |
| FET | Further Education and Training | SGB | School Governing Body |
| GET | General Education and Training | SNE | Special Need Education |

Table 2: Number of learners, educators and schools in the ordinary school sector, by province, in 2019

| Province | Public | | | Independent | | | Public and Independent | | | | | |
|---------------|------------|-----------|---------|-------------|-----------|---------|------------------------|------------------------|-----------|------------------------|---------|------------------------|
| | Learners | Educators | Schools | Learners | Educators | Schools | Learners | As % of National Total | Educators | As % of National Total | Schools | As % of National Total |
| Eastern Cape | 1 770 289 | 60 462 | 5 205 | 73 525 | 3 811 | 225 | 1 843 814 | 14.1 | 64 273 | 14.4 | 5 430 | 21.7 |
| Free State | 697 334 | 22 978 | 1 085 | 18 746 | 1 049 | 71 | 716 080 | 5.5 | 24 027 | 5.4 | 1 156 | 4.6 |
| Gauteng | 2 151 095 | 70 344 | 2 071 | 296 282 | 17 384 | 742 | 2 447 377 | 18.8 | 87 728 | 19.7 | 2 813 | 11.3 |
| KwaZulu-Natal | 2 784 917 | 93 648 | 5 821 | 59 847 | 3 915 | 215 | 2 844 764 | 21.8 | 97 563 | 21.9 | 6 036 | 24.1 |
| Limpopo | 1 687 376 | 50 916 | 3 773 | 66 443 | 3 103 | 158 | 1 753 819 | 13.4 | 54 019 | 12.1 | 3 931 | 15.7 |
| Mpumalanga | 1 067 583 | 35 316 | 1 679 | 27 358 | 1 663 | 116 | 1 094 941 | 8.4 | 36 979 | 8.3 | 1 795 | 7.2 |
| Northern Cape | 293 315 | 10 185 | 546 | 5 573 | 468 | 37 | 298 888 | 2.3 | 10 653 | 2.4 | 583 | 2.3 |
| North West | 829 336 | 26 564 | 1 451 | 23 253 | 1 448 | 85 | 852 589 | 6.5 | 28 012 | 6.3 | 1 536 | 6.1 |
| Western Cape | 1 127 510 | 36 588 | 1 445 | 61 416 | 5 015 | 273 | 1 188 926 | 9.1 | 41 603 | 9.4 | 1 718 | 6.9 |
| South Africa | 12 408 755 | 407 001 | 23 076 | 632 443 | 37 856 | 1 922 | 13 041 198 | 100. | 444 857 | 100. | 24 998 | 100.0 |

Table 2 shows the number of ordinary public and independent schools, learners and educators there were in 2019. It further shows that the highest and lowest percentages of learners, educators and schools in the ordinary school sector occurred in KwaZulu-Natal and the Northern Cape, respectively. Majority of independent schools were situated in Gauteng (742) followed by the Western Cape with 273 schools.

Table 3: Number of learners, educators and schools in the ordinary school sector, by province, from 2017 to 2019

| Province | Learners | | | Educators | | | Schools | | |
|---------------|------------|------------|------------|-----------|---------|---------|---------|--------|--------|
| | 2017 | 2018 | 2019 | 2017 | 2018 | 2019 | 2017 | 2018 | 2019 |
| Eastern Cape | 1 795 563 | 1 840 780 | 1 843 814 | 63 459 | 61 613 | 64 273 | 5 569 | 5 409 | 5 430 |
| Free State | 701 487 | 707 166 | 716 080 | 23 590 | 23 741 | 24 027 | 1 255 | 1 187 | 1 156 |
| Gauteng | 2 413 225 | 2 402 576 | 2 447 377 | 88 599 | 89 242 | 87 728 | 3 067 | 2 836 | 2 813 |
| KwaZulu-Natal | 2 863 316 | 2 821 221 | 2 844 764 | 93 340 | 93 878 | 97 563 | 6 099 | 6 038 | 6 036 |
| Limpopo | 1 776 467 | 1 724 791 | 1 753 819 | 53 736 | 54 729 | 54 019 | 4 025 | 4 006 | 3 931 |
| Mpumalanga | 1 096 428 | 1 045 972 | 1 094 941 | 34 546 | 34 825 | 36 979 | 1 836 | 1 863 | 1 795 |
| Northern Cape | 292 377 | 295 339 | 298 888 | 10 233 | 10 603 | 10 653 | 579 | 582 | 583 |
| North West | 825 776 | 840 640 | 852 589 | 28 232 | 27 352 | 28 012 | 1 556 | 1 523 | 1 536 |
| Western Cape | 1 127 634 | 1 141 057 | 1 188 926 | 37 586 | 40 466 | 41 603 | 1 776 | 1 710 | 1 718 |
| South Africa | 12 892 273 | 12 819 542 | 13 041 198 | 433 321 | 436 449 | 444 857 | 25 762 | 25 154 | 24 998 |

Sources:

2017/18: As published in School Realities 2017 and 2018

From the figures reflected in Table 3 it can be deduced that, from 2017 to 2019, the number of learners increased by 1.2% nationally, and the number of educators increased by 2.7%, while the number of schools decreased by 3%

EMIS

www.education.gov.za

Click EMIS on the left menu, then STATISTICAL PUBLICATIONS



basic education

Department:
Basic Education
REPUBLIC OF SOUTH AFRICA



E M I S

Table 4: Number of learners in ordinary schools, by province, sector, gender and grade, in 2019

| Province | Sector | Gender | Pre-Grade R | GET Band | | | | | | | | | | | | GET Band | |
|---------------|-------------|--------------|----------------|------------------|----------------|----------------|----------------|----------------|--------------------|----------------|----------------|----------------|----------------|----------------|----------------|------------------|-----------|
| | | | | Foundation Phase | | | | | Intermediate Phase | | | | Senior Phase | | | | |
| | | | | Gr. R | Gr. 1 | Gr. 2 | Gr. 3 | Total | Gr. 4 | Gr. 5 | Gr. 6 | Total | Gr. 7 | Gr. 8 | Gr. 9 | | Total |
| EASTERN CAPE | INDEPENDENT | Female | 485 | 2 546 | 3 665 | 3 718 | 3 587 | 13 516 | 3 528 | 3 241 | 2 814 | 3 528 | 3 241 | 2 814 | 2 204 | 7 648 | 30 747 |
| | | Total | 982 | 5 141 | 7 508 | 7 632 | 7 236 | 27 517 | 7 183 | 6 406 | 5 717 | 7 183 | 6 406 | 5 717 | 4 270 | 15 029 | 61 852 |
| | PUBLIC | Female | 753 | 58 947 | 72 205 | 73 266 | 70 685 | 275 103 | 72 443 | 71 811 | 71 338 | 72 443 | 71 811 | 71 338 | 62 786 | 201 813 | 692 508 |
| | | Total | 1 402 | 120 356 | 155 372 | 154 148 | 148 783 | 578 659 | 158 040 | 150 189 | 146 400 | 158 040 | 150 189 | 146 400 | 123 441 | 410 579 | 1 443 867 |
| | BOTH | Female | 1 238 | 61 493 | 75 870 | 76 984 | 74 272 | 288 619 | 75 971 | 75 052 | 74 152 | 75 971 | 75 052 | 74 152 | 64 990 | 209 461 | 723 255 |
| | | Total | 1 146 | 64 004 | 87 010 | 84 796 | 81 747 | 317 557 | 89 252 | 81 543 | 77 965 | 89 252 | 81 543 | 77 965 | 62 721 | 216 147 | 782 464 |
| Total | | 2 384 | 125 497 | 162 880 | 161 780 | 156 019 | 606 176 | 165 223 | 156 595 | 152 117 | 165 223 | 156 595 | 152 117 | 127 711 | 425 608 | 1 505 719 | |
| FREE STATE | INDEPENDENT | Female | 191 | 645 | 1 001 | 948 | 863 | 3 457 | 824 | 724 | 705 | 824 | 724 | 705 | 691 | 2 119 | 7 829 |
| | | Total | 371 | 1 283 | 1 967 | 1 847 | 1 740 | 6 837 | 1 721 | 1 461 | 1 340 | 1 721 | 1 461 | 1 340 | 1 285 | 4 125 | 15 484 |
| | PUBLIC | Female | 674 | 19 498 | 29 391 | 28 178 | 28 333 | 105 400 | 29 679 | 28 388 | 27 424 | 29 679 | 28 388 | 27 424 | 25 444 | 83 965 | 274 856 |
| | | Total | 1 289 | 39 173 | 61 510 | 58 121 | 57 420 | 216 224 | 63 129 | 58 453 | 55 482 | 63 129 | 58 453 | 55 482 | 49 550 | 169 975 | 563 263 |
| | BOTH | Female | 865 | 20 143 | 30 392 | 29 126 | 29 196 | 108 857 | 30 503 | 29 112 | 28 129 | 30 503 | 29 112 | 28 129 | 26 135 | 86 084 | 282 685 |
| | | Total | 795 | 20 313 | 33 085 | 30 842 | 29 964 | 114 204 | 34 347 | 30 802 | 28 693 | 34 347 | 30 802 | 28 693 | 24 700 | 88 016 | 296 062 |
| Total | | 1 660 | 40 456 | 63 477 | 59 968 | 59 160 | 223 061 | 64 850 | 59 914 | 56 822 | 64 850 | 59 914 | 56 822 | 50 835 | 174 100 | 578 747 | |
| GAUTENG | INDEPENDENT | Female | 2 293 | 7 638 | 15 023 | 14 637 | 13 763 | 51 061 | 13 040 | 11 919 | 10 671 | 13 040 | 11 919 | 10 671 | 10 527 | 32 122 | 118 813 |
| | | Total | 4 518 | 15 613 | 30 598 | 29 535 | 27 692 | 103 438 | 26 094 | 23 934 | 21 305 | 26 094 | 23 934 | 21 305 | 20 658 | 63 829 | 238 600 |
| | PUBLIC | Female | 1 208 | 53 759 | 94 745 | 93 284 | 92 329 | 334 117 | 93 676 | 91 994 | 88 328 | 93 676 | 91 994 | 88 328 | 78 888 | 249 135 | 857 250 |
| | | Total | 2 455 | 108 231 | 198 024 | 191 959 | 187 815 | 686 029 | 193 869 | 184 745 | 176 407 | 193 869 | 184 745 | 176 407 | 153 782 | 499 232 | 1 740 282 |
| | BOTH | Female | 3 501 | 61 397 | 109 768 | 107 921 | 106 092 | 385 178 | 106 716 | 103 913 | 98 999 | 106 716 | 103 913 | 98 999 | 89 415 | 281 257 | 976 063 |
| | | Total | 3 472 | 62 447 | 118 854 | 113 573 | 109 415 | 404 289 | 113 247 | 104 766 | 98 713 | 113 247 | 104 766 | 98 713 | 85 025 | 283 804 | 1 002 819 |
| Total | | 6 973 | 123 844 | 228 622 | 221 494 | 215 507 | 789 467 | 119 963 | 208 679 | 197 712 | 219 963 | 208 679 | 197 712 | 174 440 | 561 801 | 1 978 882 | |
| KWAZULU NATAL | INDEPENDENT | Female | 835 | 2 148 | 2 972 | 2 785 | 2 701 | 10 606 | 2 464 | 2 290 | 2 244 | 2 464 | 2 290 | 2 244 | 2 221 | 6 867 | 24 471 |
| | | Total | 1 623 | 4 348 | 5 856 | 5 478 | 5 304 | 20 986 | 4 900 | 4 574 | 4 224 | 4 900 | 4 574 | 4 224 | 3 913 | 12 565 | 47 249 |
| | PUBLIC | Female | 998 | 91 376 | 111 145 | 109 426 | 107 669 | 419 616 | 109 642 | 109 498 | 106 490 | 109 642 | 109 498 | 106 490 | 102 696 | 317 637 | 1 062 883 |
| | | Total | 2 041 | 184 223 | 234 077 | 226 537 | 223 199 | 868 036 | 232 873 | 225 139 | 217 876 | 232 873 | 225 139 | 217 876 | 207 407 | 652 527 | 2 196 451 |
| | BOTH | Female | 1 833 | 93 524 | 114 117 | 112 211 | 110 370 | 430 222 | 112 106 | 111 788 | 108 734 | 112 106 | 111 788 | 108 734 | 104 917 | 324 504 | 1 087 354 |
| | | Total | 1 831 | 95 047 | 125 816 | 119 804 | 118 133 | 458 800 | 125 667 | 117 925 | 113 366 | 125 667 | 117 925 | 113 366 | 106 403 | 340 588 | 1 156 346 |
| Total | | 3 664 | 188 571 | 239 933 | 232 015 | 228 503 | 889 022 | 237 773 | 229 713 | 222 100 | 237 773 | 229 713 | 222 100 | 211 320 | 665 092 | 2 243 700 | |
| LIMPOPO | INDEPENDENT | Female | 389 | 2 729 | 3 524 | 3 317 | 3 148 | 12 718 | 2 961 | 2 820 | 2 503 | 8 284 | 2 389 | 2 381 | 2 155 | 6 925 | 27 927 |
| | | Total | 790 | 5 294 | 7 034 | 6 618 | 6 230 | 25 176 | 5 998 | 5 513 | 5 027 | 16 538 | 4 638 | 4 577 | 4 155 | 13 370 | 55 084 |
| | PUBLIC | Female | 93 | 60 030 | 67 534 | 66 918 | 64 810 | 259 292 | 66 637 | 64 626 | 62 136 | 193 399 | 60 735 | 63 314 | 58 418 | 182 467 | 635 158 |
| | | Total | 190 | 120 862 | 140 143 | 139 563 | 134 891 | 535 459 | 144 308 | 133 865 | 126 645 | 404 818 | 123 471 | 135 151 | 120 826 | 379 448 | 1 319 725 |
| | BOTH | Female | 482 | 62 759 | 71 058 | 70 235 | 67 958 | 272 010 | 69 598 | 67 446 | 64 639 | 201 683 | 63 124 | 65 695 | 60 573 | 189 392 | 663 085 |
| | | Total | 498 | 63 397 | 76 119 | 75 946 | 73 163 | 288 625 | 80 708 | 71 932 | 67 033 | 219 673 | 64 985 | 74 033 | 64 408 | 203 426 | 711 724 |
| Total | | 980 | 126 156 | 147 177 | 146 181 | 141 121 | 560 635 | 150 306 | 139 378 | 131 672 | 421 356 | 128 109 | 139 728 | 124 981 | 392 818 | 1 374 809 | |
| MPUMALANGA | INDEPENDENT | Female | 61 | 919 | 1 607 | 1 488 | 1 337 | 5 351 | 1 206 | 1 101 | 964 | 3 271 | 828 | 616 | 553 | 1 997 | 10 619 |
| | | Total | 124 | 1 819 | 3 248 | 2 923 | 2 778 | 10 768 | 2 521 | 2 295 | 1 933 | 6 749 | 1 741 | 1 378 | 1 245 | 4 364 | 21 881 |
| | PUBLIC | Female | 98 | 31 854 | 43 969 | 43 769 | 41 425 | 161 017 | 42 827 | 42 167 | 41 294 | 126 288 | 40 238 | 41 228 | 38 822 | 120 288 | 407 593 |
| | | Total | 179 | 64 387 | 92 259 | 89 774 | 86 427 | 332 847 | 90 976 | 86 898 | 84 711 | 262 585 | 82 860 | 86 734 | 78 327 | 247 921 | 843 353 |
| | BOTH | Female | 159 | 32 773 | 45 576 | 45 257 | 42 762 | 166 368 | 44 033 | 43 268 | 42 258 | 129 559 | 41 066 | 41 844 | 39 375 | 122 285 | 418 212 |
| | | Total | 144 | 33 433 | 49 931 | 47 440 | 46 443 | 177 247 | 49 464 | 45 925 | 44 386 | 139 775 | 43 535 | 46 268 | 40 197 | 130 000 | 447 022 |
| Total | | 303 | 66 206 | 95 507 | 92 697 | 89 205 | 343 615 | 93 497 | 89 193 | 86 644 | 269 334 | 84 601 | 88 112 | 79 572 | 252 285 | 865 234 | |
| NORTHERN CAPE | INDEPENDENT | Female | 218 | 252 | 245 | 211 | 241 | 949 | 177 | 171 | 143 | 491 | 134 | 275 | 213 | 622 | 2 062 |
| | | Total | 418 | 492 | 556 | 496 | 450 | 1 994 | 414 | 360 | 301 | 1 075 | 260 | 472 | 374 | 1 106 | 4 175 |
| | PUBLIC | Female | 197 | 9 974 | 13 386 | 12 402 | 12 173 | 47 935 | 12 942 | 12 250 | 11 659 | 36 851 | 11 739 | 11 503 | 10 393 | 33 635 | 118 421 |
| | | Total | 377 | 19 905 | 27 984 | 25 605 | 25 213 | 98 707 | 27 873 | 25 131 | 23 341 | 76 345 | 24 246 | 23 145 | 20 041 | 67 432 | 242 484 |
| | BOTH | Female | 415 | 10 226 | 13 631 | 12 613 | 12 414 | 48 884 | 13 119 | 12 421 | 11 802 | 37 342 | 11 873 | 11 778 | 10 606 | 34 257 | 120 483 |
| | | Total | 380 | 10 171 | 14 909 | 13 488 | 13 249 | 51 817 | 15 168 | 13 070 | 11 840 | 40 078 | 12 633 | 11 839 | 9 809 | 34 281 | 126 176 |
| Total | | 795 | 20 397 | 28 540 | 26 101 | 25 663 | 100 701 | 28 287 | 25 491 | 23 642 | 77 420 | 24 506 | 23 617 | 20 415 | 68 538 | 246 659 | |
| NORTH WEST | INDEPENDENT | Female | 36 | 918 | 1 297 | 1 263 | 1 177 | 4 655 | 1 180 | 983 | 896 | 3 059 | 842 | 736 | 651 | 2 229 | 9 943 |
| | | Total | 71 | 1 862 | 2 578 | 2 624 | 2 412 | 9 476 | 2 363 | 1 961 | 1 854 | 6 178 | 1 628 | 1 552 | 1 277 | 4 457 | 20 111 |
| | PUBLIC | Female | 63 | 26 237 | 34 781 | 35 071 | 34 163 | 130 252 | 36 080 | 34 963 | 32 979 | 104 022 | 32 060 | 34 171 | 29 781 | 96 012 | 330 286 |
| | | Total | 125 | 52 605 | 72 405 | 72 789 | 70 867 | 268 666 | 78 024 | 71 490 | 66 132 | 215 646 | 64 642 | 70 844 | 58 833 | 194 319 | 678 631 |
| | BOTH | Female | 99 | 27 155 | 36 078 | 36 334 | 35 340 | 134 907 | 37 260 | 35 946 | 33 875 | 107 081 | 32 902 | 34 907 | 30 432 | 98 241 | 340 229 |
| | | Total | 97 | 27 312 | 38 905 | 39 079 | 37 939 | 143 235 | 43 127 | 37 505 | 34 111 | 114 743 | 33 368 | 37 489 | 29 678 | 100 535 | 358 513 |
| Total | | 196 | 54 467 | 74 983 | 75 413 | 73 279 | 278 142 | 80 387 | 73 451 | 67 986 | 221 824 | 66 270 | 72 396 | 60 110 | 198 776 | 698 742 | |
| WESTERN CAPE | INDEPENDENT | Female | 635 | 1 891 | 2 793 | 2 888 | 2 666 | 10 238 | 2 548 | 2 455 | 2 169 | 7 172 | 2 061 | 2 201 | 2 091 | 6 353 | 23 763 |
| | | Total | 1 462 | 3 816 | 5 679 | 5 814 | 5 414 | 20 723 | 5 130 | 4 881 | 4 437 | 14 448 | 4 222 | 4 496 | 4 234 | 12 9 | |

E M I S

Table 4: Number of learners in ordinary schools, by province, sector, gender and grade, in 2019 (concluded)

| Province | Sector | Gender | FET band | | | | Other | Total Primary (Gr1-7) | Total Secondary (Gr8-12) | Total (Gr1-12) | Grand Total |
|---------------|-------------|----------------|----------------|----------------|----------------|------------|------------------|-----------------------|--------------------------|------------------|-------------|
| | | | Gr. 10 | Gr. 11 | Gr. 12 | Total | | | | | |
| EASTERN CAPE | INDEPENDENT | Female | 1 927 | 1 699 | 2 129 | 5 755 | 4 | 23 309 | 10 647 | 33 956 | 36 991 |
| | | Total | 3 668 | 3 191 | 3 812 | 10 671 | 20 | 47 209 | 20 173 | 67 382 | 73 525 |
| | PUBLIC | Female | 70 018 | 58 747 | 44 198 | 172 963 | 0 | 501 783 | 304 741 | 806 524 | 866 224 |
| | | Total | 137 268 | 107 938 | 79 814 | 325 020 | 0 | 1 057 721 | 590 810 | 1 648 531 | 1 770 289 |
| | BOTH | Female | 71 945 | 60 446 | 46 327 | 178 718 | 4 | 525 092 | 315 388 | 840 480 | 903 215 |
| | | Male | 68 991 | 50 683 | 37 299 | 156 973 | 16 | 579 838 | 295 595 | 875 433 | 940 599 |
| | Total | 140 936 | 111 129 | 83 626 | 335 691 | 20 | 1 104 930 | 610 983 | 1 715 913 | 1 843 814 | |
| FREE STATE | INDEPENDENT | Female | 610 | 537 | 412 | 1 559 | 0 | 5 685 | 3 058 | 8 743 | 9 579 |
| | | Total | 1 145 | 993 | 753 | 2 891 | 0 | 11 326 | 5 766 | 17 092 | 18 746 |
| | PUBLIC | Female | 30 418 | 21 820 | 18 469 | 70 707 | 0 | 199 640 | 126 425 | 326 065 | 346 237 |
| | | Total | 59 792 | 39 925 | 33 065 | 132 782 | 0 | 412 733 | 244 139 | 656 872 | 697 334 |
| | BOTH | Female | 31 028 | 22 357 | 18 881 | 72 266 | 0 | 205 325 | 129 483 | 334 808 | 355 816 |
| | | Male | 29 909 | 18 561 | 14 937 | 63 407 | 0 | 218 734 | 120 422 | 339 156 | 360 264 |
| | Total | 60 937 | 40 918 | 33 818 | 135 673 | 0 | 424 059 | 249 905 | 673 964 | 716 080 | |
| GAUTENG | INDEPENDENT | Female | 9 842 | 9 340 | 8 252 | 27 434 | 2 | 88 997 | 49 612 | 138 609 | 148 542 |
| | | Total | 19 540 | 18 141 | 15 470 | 53 151 | 13 | 179 189 | 96 949 | 276 138 | 296 282 |
| | PUBLIC | Female | 86 823 | 73 778 | 55 181 | 215 782 | 72 | 640 583 | 378 690 | 1 019 273 | 1 074 312 |
| | | Total | 172 943 | 135 371 | 99 798 | 408 112 | 246 | 1 304 439 | 735 624 | 2 040 163 | 2 151 095 |
| | BOTH | Female | 96 665 | 83 118 | 63 433 | 243 216 | 74 | 729 580 | 428 302 | 1 157 882 | 1 222 854 |
| | | Male | 95 818 | 70 394 | 51 835 | 218 047 | 185 | 754 048 | 404 371 | 1 158 419 | 1 224 523 |
| | Total | 192 483 | 153 512 | 115 268 | 461 263 | 259 | 1 483 628 | 832 673 | 2 316 301 | 2 447 577 | |
| KWAZULU-NATAL | INDEPENDENT | Female | 2 041 | 1 946 | 2 305 | 6 292 | 10 | 17 554 | 11 061 | 28 615 | 31 608 |
| | | Total | 3 595 | 3 480 | 3 880 | 10 955 | 20 | 34 420 | 19 436 | 53 856 | 59 847 |
| | PUBLIC | Female | 111 707 | 111 648 | 81 489 | 304 844 | 0 | 759 088 | 517 263 | 1 276 351 | 1 368 725 |
| | | Total | 230 346 | 208 987 | 147 092 | 586 425 | 0 | 1 573 554 | 1 025 099 | 2 598 653 | 2 784 917 |
| | BOTH | Female | 113 748 | 113 594 | 83 794 | 311 136 | 10 | 776 642 | 528 324 | 1 304 966 | 1 400 333 |
| | | Male | 120 193 | 98 873 | 67 178 | 286 244 | 10 | 831 332 | 516 211 | 1 347 543 | 1 444 431 |
| | Total | 233 941 | 212 467 | 150 972 | 597 380 | 20 | 1 607 974 | 1 044 535 | 2 652 509 | 2 844 764 | |
| LIMPOPO | INDEPENDENT | Female | 2 013 | 1 880 | 1 833 | 5 726 | 0 | 20 662 | 10 262 | 30 924 | 34 042 |
| | | Total | 3 741 | 3 511 | 3 317 | 10 569 | 0 | 41 058 | 19 301 | 60 359 | 66 443 |
| | PUBLIC | Female | 71 766 | 63 835 | 51 439 | 187 040 | 0 | 453 396 | 308 772 | 762 168 | 822 291 |
| | | Total | 150 255 | 121 810 | 95 396 | 367 461 | 0 | 942 886 | 623 438 | 1 566 324 | 1 687 376 |
| | BOTH | Female | 73 779 | 65 715 | 53 272 | 192 766 | 0 | 474 058 | 319 034 | 793 092 | 856 333 |
| | | Male | 80 217 | 59 606 | 45 441 | 185 264 | 0 | 509 886 | 323 705 | 833 591 | 897 486 |
| | Total | 153 996 | 125 321 | 98 713 | 378 030 | 0 | 983 944 | 642 739 | 1 626 683 | 1 753 819 | |
| MPUMALANGA | INDEPENDENT | Female | 609 | 714 | 1 302 | 2 625 | 0 | 8 531 | 3 794 | 12 325 | 13 305 |
| | | Total | 1 293 | 1 584 | 2 476 | 5 353 | 0 | 17 439 | 7 976 | 25 415 | 27 358 |
| | PUBLIC | Female | 43 512 | 42 591 | 30 996 | 117 099 | 9 | 295 689 | 197 149 | 492 838 | 524 799 |
| | | Total | 88 267 | 79 912 | 55 841 | 224 020 | 31 | 613 905 | 389 081 | 1 002 986 | 1 067 583 |
| | BOTH | Female | 44 121 | 43 305 | 32 298 | 119 724 | 9 | 304 220 | 200 943 | 505 163 | 538 104 |
| | | Male | 45 439 | 38 191 | 26 019 | 109 649 | 22 | 327 124 | 196 114 | 523 238 | 556 837 |
| | Total | 89 560 | 81 496 | 58 317 | 229 373 | 31 | 631 344 | 397 057 | 1 028 401 | 1 094 941 | |
| NORTHERN CAPE | INDEPENDENT | Female | 191 | 213 | 152 | 556 | 0 | 1 322 | 1 044 | 2 366 | 2 836 |
| | | Total | 368 | 346 | 266 | 980 | 0 | 2 837 | 1 826 | 4 663 | 5 573 |
| | PUBLIC | Female | 11 609 | 8 898 | 6 397 | 26 904 | 0 | 86 551 | 48 800 | 135 351 | 145 522 |
| | | Total | 22 655 | 16 266 | 11 533 | 50 454 | 0 | 179 393 | 93 640 | 273 033 | 293 315 |
| | BOTH | Female | 11 800 | 9 111 | 6 549 | 27 460 | 0 | 87 873 | 49 844 | 137 717 | 148 358 |
| | | Male | 11 223 | 7 501 | 5 250 | 23 974 | 0 | 94 357 | 45 622 | 139 979 | 150 530 |
| | Total | 23 023 | 16 612 | 11 799 | 51 434 | 0 | 182 230 | 95 466 | 277 696 | 298 888 | |
| NORTH WEST | INDEPENDENT | Female | 617 | 518 | 438 | 1 573 | 9 | 7 638 | 2 960 | 10 598 | 11 561 |
| | | Total | 1 215 | 1 042 | 796 | 3 053 | 18 | 15 420 | 5 882 | 21 302 | 23 253 |
| | PUBLIC | Female | 33 859 | 27 484 | 17 753 | 79 096 | 0 | 240 097 | 143 048 | 383 145 | 409 445 |
| | | Total | 67 300 | 50 666 | 32 614 | 150 580 | 0 | 496 349 | 280 257 | 776 606 | 829 336 |
| | BOTH | Female | 34 476 | 28 002 | 18 191 | 80 669 | 9 | 247 735 | 146 008 | 393 743 | 421 006 |
| | | Male | 34 039 | 23 706 | 15 219 | 72 964 | 9 | 264 034 | 140 131 | 404 165 | 431 589 |
| | Total | 68 515 | 51 708 | 33 410 | 153 633 | 18 | 511 769 | 286 139 | 797 908 | 852 589 | |
| WESTERN CAPE | INDEPENDENT | Female | 2 017 | 1 935 | 1 790 | 5 742 | 0 | 17 580 | 10 034 | 27 614 | 30 140 |
| | | Total | 4 150 | 3 945 | 3 736 | 11 831 | 0 | 35 577 | 20 561 | 56 138 | 61 416 |
| | PUBLIC | Female | 36 182 | 28 223 | 22 294 | 86 699 | 0 | 356 567 | 164 116 | 520 683 | 554 927 |
| | | Total | 77 883 | 63 927 | 51 055 | 192 865 | 0 | 703 795 | 355 715 | 1 059 510 | 1 127 510 |
| | BOTH | Female | 38 199 | 30 158 | 24 084 | 92 441 | 0 | 374 147 | 174 150 | 548 297 | 585 067 |
| | | Male | 43 834 | 37 714 | 30 707 | 112 255 | 0 | 365 225 | 202 126 | 567 351 | 603 859 |
| | Total | 82 033 | 67 872 | 54 791 | 204 696 | 0 | 739 372 | 376 276 | 1 115 648 | 1 188 926 | |
| SOUTH AFRICA | INDEPENDENT | Female | 19 867 | 18 782 | 18 613 | 57 262 | 25 | 191 278 | 102 472 | 293 750 | 318 604 |
| | | Male | 18 848 | 17 451 | 15 893 | 52 192 | 46 | 193 197 | 95 398 | 288 595 | 313 839 |
| | | Total | 38 715 | 36 233 | 34 506 | 109 454 | 71 | 384 475 | 197 870 | 582 345 | 632 443 |
| | PUBLIC | Female | 495 894 | 437 024 | 328 216 | 1 261 134 | 81 | 3 533 394 | 2 189 004 | 5 722 398 | 6 112 482 |
| | | Male | 510 815 | 387 778 | 277 992 | 1 176 585 | 196 | 3 751 381 | 2 148 899 | 5 900 280 | 6 296 273 |
| | | Total | 1 006 709 | 824 802 | 606 208 | 2 437 719 | 277 | 7 284 775 | 4 337 903 | 11 622 678 | 12 408 755 |
| | BOTH | Female | 515 761 | 455 806 | 346 829 | 1 318 396 | 106 | 3 724 672 | 2 291 476 | 6 016 148 | 6 431 086 |
| | | Male | 529 663 | 405 229 | 293 885 | 1 228 777 | 242 | 3 944 578 | 2 244 297 | 6 188 875 | 6 610 112 |
| | | Total | 1 045 424 | 861 035 | 640 714 | 2 547 173 | 348 | 7 669 250 | 4 535 773 | 12 205 023 | 13 041 198 |

Note 1: Data exclude learners at stand-alone ECD sites and special schools.

Note 2: Owing to a shortage of space in the table, the male enrolment figures for ordinary public and independent schools are intentionally omitted in the provincial data, but are included in the national data.

1) Learners not grouped in any of the grades provided

Figure 1: Percentage distribution of learners in ordinary schools, by phase, in 2019

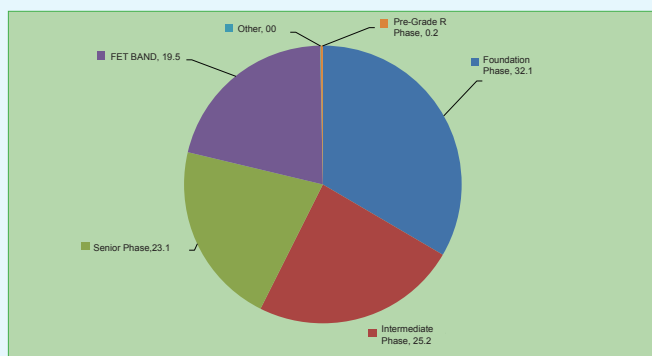


Figure 1 reveals that the highest proportion of learners in ordinary schools nationally was located in the foundation phase (32.1%) followed by the intermediate phase and the senior phase with 25.2% and 23.1%.

Figure 2: Percentage distribution of female learners in ordinary schools, by grade, in 2019

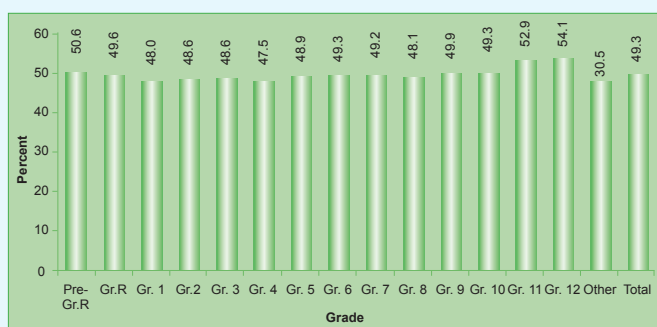


Figure 2 shows that, in the schooling system, there were more male than female (49.3%) learners. The lowest percentage of female learners in ordinary schools nationally was in Grades 1 and 4 (48.0 and 47.5% respectively) and the highest percentage was in Grades 11 and 12 (52.9 and 54.1% respectively).

Figure 3: Percentage distribution of learners in ordinary schools, by grade, in 2019

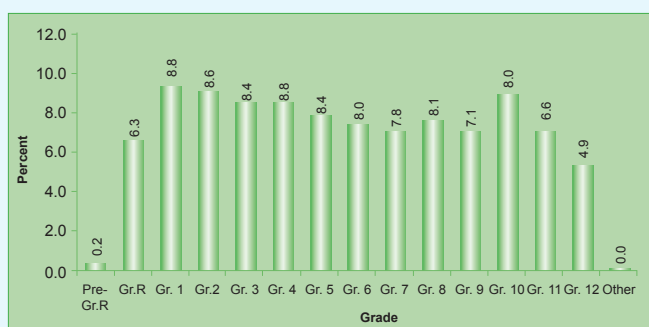


Figure 3 indicates that enrolment is generally very high in Grades 1 and 4 (8.8%) and declines as learners move to higher grades within the schooling system with 4.9% in Grade 12.

Table 5 reflects the following indicators:

(a) When counting all educators, the LER for ordinary public schools nationally was 30.8, while, when counting only state-paid educators in these schools, the LER increased to 34.3.

Table 5: Indicators for ordinary PUBLIC schools, by province, in 2019

| Province | LER | | LSR | ESR |
|---------------|-----------------------------------|------------------------------------|------|------|
| | State-paid and SGB-paid Educators | State-Paid Educators ¹⁾ | | |
| Eastern Cape | 29.3 | 33.4 | 340 | 11.6 |
| Free State | 30.3 | 33.8 | 643 | 21.2 |
| Gauteng | 30.6 | 35.9 | 1039 | 34.0 |
| KwaZulu-Natal | 30.4 | 32.8 | 489 | 16.1 |
| Limpopo | 33.1 | 34.3 | 447 | 13.5 |
| Mpumalanga | 30.2 | 32.5 | 636 | 21.0 |
| Northern Cape | 28.8 | 32.1 | 537 | 18.7 |
| North West | 31.2 | 33.9 | 572 | 18.3 |
| Western Cape | 30.8 | 40.8 | 823 | 25.3 |
| South Africa | 30.8 | 34.3 | 543 | 17.6 |

1) Underlying data not shown in the publication.

(b) The LSR for ordinary public schools nationally was 543, with six provinces (Free State, Gauteng, Mpumalanga, the Northern Cape, North West and the Western Cape) higher than the national average.

(c) The ESR for ordinary public schools nationally was 17.6, with six provinces (the Free State, Gauteng, Mpumalanga, the Northern Cape, North West and the Western Cape) higher than the national average.

Figure 4: Frequency distribution of learners in ordinary PUBLIC schools in 2019



Figure 4, a histogram, shows that the highest number of ordinary public schools nationally (6 549, or 28.4%) was in the 101 to 300 learner interval. Furthermore, there were 2 310 schools (10%) and 616 schools (2.7%) in, respectively, the 100 and below learner interval and the above 1 500 learner interval.

Figure 5: Frequency distribution of LER in ordinary PUBLIC schools in 2019

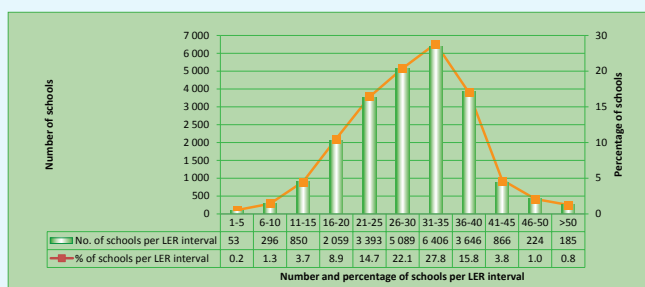


Figure 5, a histogram, reflects that the highest number of ordinary public schools nationally (6 406, or 27.8%) was in the 31 to 35 LER interval. Furthermore, there were 53 schools (0.2%) and 185 schools (0.8) in, respectively, the one to five LER interval and the above 50 LER interval.