



CHOICES FOR YOUTH

ANNUAL REPORT | 2017 - 2018



TOGETHER, WE CAN END YOUTH HOMELESSNESS.

Through innovative programming and social enterprises we help at-risk youth secure stable housing, education, and employment, while working toward family stability and better health.



A YEAR IN NUMBERS

5,351

HOUSING
actions taken to
support youth.

1,432

EMPLOYMENT
actions taken to
support youth.

5,997

MENTAL & PHYSICAL HEALTH
actions taken to
support youth.

3,733

FAMILY
actions taken to
support youth.

1,519

YOUTH SERVED
in the last year.

21,816

MEALS
served to
youth.

25,562

HOURS
of youth employment
created.

110,771

KILOMETRES
driven in support
of youth.

3,039

VISITS
to youth
at home.

4,256

HOURS
contributed by
volunteers.

909

DONATIONS
made in support
of CFY.

51,001

VISITS
to the CFY
website.

8,953

MEMBERS
of our online
community.

LEADERSHIP TEAM

Sheldon Pollett
Executive Director

Chelsey MacNeil
Director of Social Enterprise

Wendy Daniels
Director of Finance & Administration

Ally Jamieson
Manager of Research & Evaluation

Jonathan Moore
Manager of Financial Reporting

Angela Picco
Fund Development & Communications Coordinator

Joshua Smee
Provincial Expansion Coordinator

Ayon Shahed
Director of Strategic Development

Kris Kelly
Director of Programs & Operations

Adam Hiscock
Manager of Social Enterprise

Jill Doyle
Manager of Family Programming & Support Services

Paula Soper
Manager of Supportive Housing & Employment Programs

Jenelle Fitzpatrick
Human Resource Specialist

Steve Power
Board Chair
Partner,
Grant Thornton

Chris King
Board Member
Partner,
McInnes Cooper

Dr. Jill Allison
Board Member
Faculty of Medicine,
Memorial University Newfoundland

Nicole Parsons
Board Member
Human Resources Professional,
Nalcor Energy

Andrew Woodland
Board Secretary
Legal Counsel,
City of St. John's

Chris Peddigrew
Board Member
Partner,
Wadden Peddigrew Hogan

Dr. Kimberly St. John
Board Member
Chair of Psychiatry,
Janeway Hospital

Ross Reid
Board Member
Consultant

Lynn Zurel
Board Treasurer
Chartered Accountant,
Stonebridge Capital Inc.

Colin Krulicki
Board Member
Regional Vice President,
Royal Bank of Canada

Geoff Davis
Board Member
Partner,
Deloitte

TABLE OF CONTENTS

2	Message: From the Youth Leadership Council
3	Message: From the Premier of Newfoundland and Labrador
4	Message: From the Chair of the Board & the Executive Director
5-6	Housing
7	Featured Client: Liam
8	From Boats to Bowls
9-10	Employment
11-12	Provincial Expansion
13-14	Family
15	Coldest Night of the Year
16	Featured Client: Charlie
17-18	Health
19	Leading the Way
20	Social Buying Symposium
21	Bell Let's Talk Community Grant
22	Home Depot Orange Door Campaign
23-24	Our Partners

A MESSAGE FROM:

THE YOUTH LEADERSHIP COUNCIL

A focus on internal growth this year in the YLC has centered on advanced leadership development, event planning, and strategies for using our voice to communicate strength in advocacy. We have empowered our external advocacy through developing human rights trainings, contributions to education system reform, and participation in Provincial and National initiatives.

Each meeting starts with an emphasis on peer support then moves into issues that hold personal and group interests for transferring meaningful supports into the community. Our Mental Health First Aid and Naloxone training has been a part of keeping each other safe, and helps us serve our community better. This year's Point-in-Time Count was the second year we put together a magnet event, helping the national effort to track homelessness.

The YLC has grown in numbers and continues to exercise leadership to improve experiences for youth throughout the city, province, and country.

Sincerely,

Youth Leadership Council



Ask Spirest

Cody Byrne

Colton Purchase

Emi Eagles

Emily Wadden

Grace Cox

Isaiah Hagerman

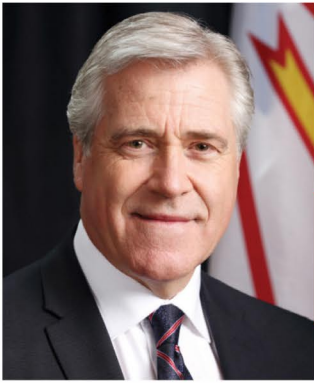
Jesse Sharpe

Mike Bishop

Nick Ings

Ocean-Dawn Gale

Randy Walsh



MESSAGE FROM THE PREMIER

Congratulations to Choices for Youth on another successful year. This last year has been an exciting one for the organization as it has explored ways to expand its services to areas across the province.

The Government of Newfoundland and Labrador values the relationship it has with Choices for Youth. Your dedication and commitment to helping at-risk and homeless youth ensures that they always have a voice. Your work recognizes the strengths and needs of each youth and you engage with them and others to help these youth achieve their goals. Through your work with youth, you are contributing to a brighter future for Newfoundland and Labrador.

All of your success would not be possible without the staff, volunteers and Board of Directors of Choices for Youth. Your leadership has resulted in an engaging, respectful and inclusive environment which has helped countless young people in our province. Our government is pleased to work with Choices for Youth and we look forward to a continued partnership as we work towards developing solutions for vulnerable youth. This collaboration supports commitments in The Way Forward to deliver better services and better outcomes for residents in our province.

Best wishes to Choices for Youth for the coming year as you build upon the foundation you have laid over 2017-18.

A handwritten signature in blue ink, appearing to read "D. Ball". The signature is stylized and cursive.

Hon. Dwight Ball
Premier

A MESSAGE FROM:

STEVE POWER
CHAIR OF THE BOARD

&

SHELDON POLLETT
EXECUTIVE DIRECTOR

To our valued supporters,

It is with great pride that we release Choices for Youth's 2017-18 Annual Report to acknowledge and celebrate the tremendous resilience and accomplishments of youth over the past twelve months. Along with our focus on youth, this report is yet another testament to what is possible when you have staff, board and partners who commit to changing lives on a daily basis.

As has been the story since 2008, the number of youth coming through our doors continues to rise at an alarming rate. A substantial part of that growth is attributable to new resources being made available in areas such as Family Reconnect programming, additional social enterprise opportunities, and increased capacity in our Momma Moments and employment supports programming.

Although we remain an organization steeped in a culture of solution focused innovation, the truth remains that 1519 youth in the province of Newfoundland and Labrador needing the services of Choices is 1519 too many. For this reason, Choices continues to be an active partner and founding board member of A Way Home Canada, a national coalition leading a substantial effort to prevent and end youth homelessness in Canada.

In addition to our day to day support to youth, our team has been working diligently both on a provincial and national level to research, evaluate, and analyze the work we are doing. These efforts will also help us partner with communities across our province to meet the needs of youth by expanding our services to at least six communities in the next two years.

Our belief in young people and their potential is the foundation for the work we do each day at CFY. You will see this translated through the many statistics, stories, and updates found throughout this report. We will continue to build on this progress as we move into the next phase of our expansion process, and hope you will follow along online, through our newsletter, or on social media as we work to end youth homelessness in Newfoundland and Labrador.

Sincerely,



Steve Power
CHAIR OF THE BOARD

A handwritten signature of Steve Power in blue ink.



Sheldon Pollett
EXECUTIVE DIRECTOR

A handwritten signature of Sheldon Pollett in blue ink.

Safe, stable housing is the first step for youth to find stability and work towards healthy lives. As we help youth through this process, our aim is to make sure they find housing that reflects their needs. Choices for Youth offers a wide range of housing options focused on creating supportive spaces for youth to call home.

MORE THAN SHELTER

Once a young person arrives at the Choice Shelter, the goal is to get them rehoused as soon as possible while giving them the support they need to address challenges and get back on their feet. During a resident's stay, staff work with youth to look for alternative housing options, which can include bedsitters, returning to family, connecting with a friend for support, or moving into one of our own housing units. In addition to the immediate housing support, providing referrals, advocating for youth, writing letters of support, and ensuring they have necessary documentation are all critical pieces in setting youth up for success, and is a large part of the planning that staff and young people take on together during a shelter stay.

SHELTER STATS

118

Individuals

2,810

Nights Stayed

86%

Occupancy Rate

CONNECTIONS AND COMPANIONS

Youth living at The Lilly work with staff to develop individualized support plans, highlighting their strengths and identifying challenges they want to overcome. Youth strive for greater self-determination, while building new skills and a sense of community while living at The Lilly. As young people transition out of The Lilly and into independent living, staff help them through the process and continue to provide support to help them maintain housing stability in their new place.

This year, The Lilly also welcomed a therapy dog, Miki, into their space. This service has had an incredible impact on residents. One youth facing mental health challenges has become more engaged since Miki's visits. When Miki is around, the young person is more social, interactive, and they are proud to show their closeness with the dog.

THE LILLY STATS

26

Youth Housed

7

Attended High School

7

Maintained Employment



CHOICES

PROGRAMMING THAT WORKS

This year, the former Moving Forward and RallyHaven programs merged to become the RallyForward program, offering a combination of intensive case management and supportive housing to participants. The program is now able to accommodate 26 young people, with 16 youth living in RallyForward housing units throughout the city and 10 youth with housing in the private rental market.

The RallyForward program gives young people the opportunity to build skills and work towards independence in a supportive environment. When youth find they are ready to transition to a more independent lifestyle, RallyForward staff are with them every step of the way to help them find housing and ensure they are setting themselves up for success. This year, 2 youth transitioned from supportive housing units and secured their own apartments after residing in the RallyForward program for 4 years. Both young people have secured part-time employment, are continuing to access support for their needs, and are working hard as they continue to move forward.

RALLYFORWARD STATS

34

Youth
Housed

42

Group
Cooking Classes

50

Group
Recreation Sessions

MORE OPTIONS FOR SUPPORT

Choices for Youth and Stella's Circle operate the Front Step program which provides housing and supports to individuals experiencing the longest and most frequent episodes of homelessness in our community. Choices for Youth also collaborates with End Homelessness St. John's to operate the Homelessness Prevention and Rapid Rehousing program, which aims to provide targeted, timely support services for individuals experiencing homelessness, to help them quickly exit emergency shelters and then retain housing.

FRONT STEP

68

Active Clients

58

Housed

RAPID REHOUSING

28

Referrals

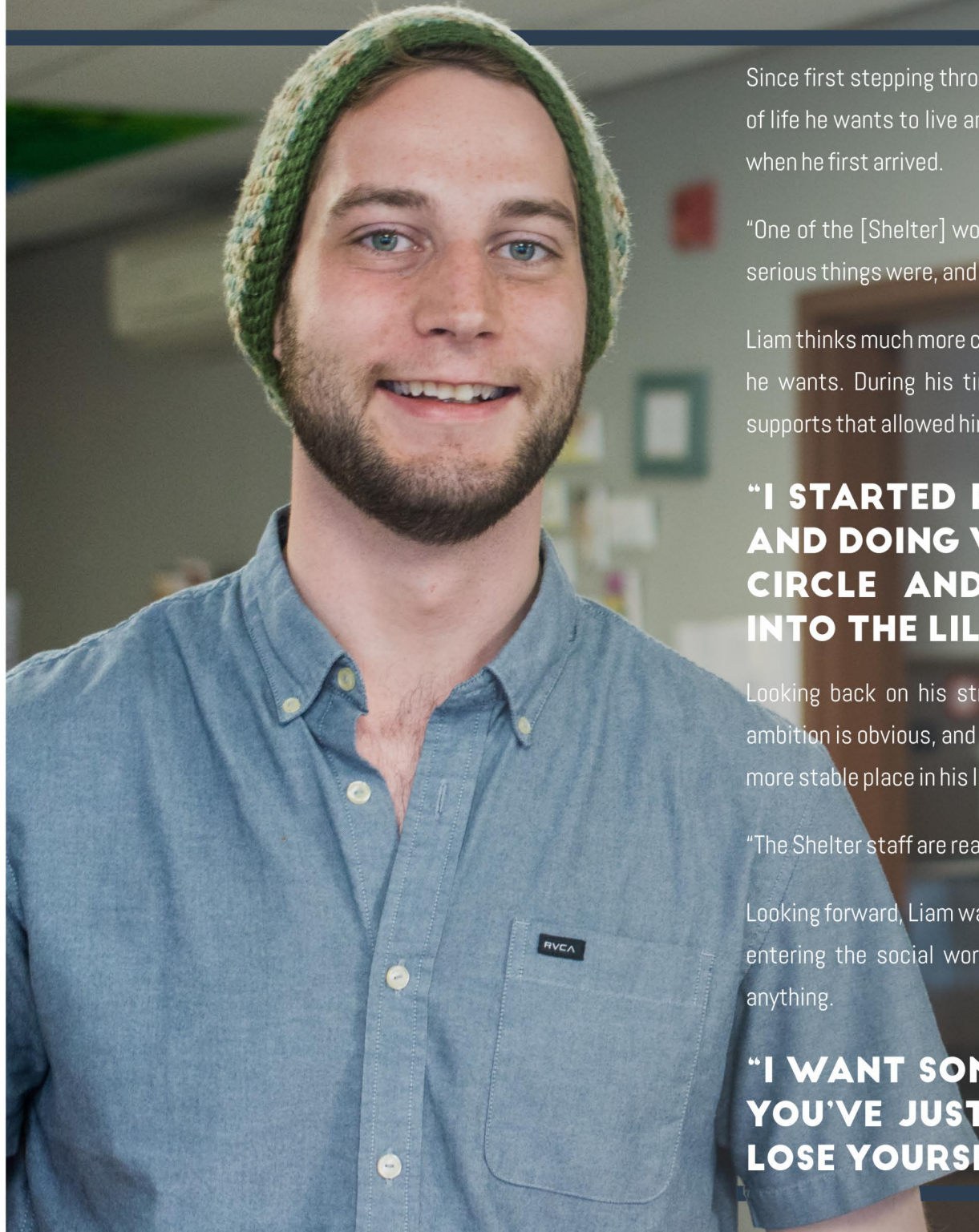
19

Rehoused



LIAM

YOUTH PROFILE



Since first stepping through the Shelter doors, Liam has taken time to reflect on what kind of life he wants to live and how he intends to live it. His outlook now is quite different than when he first arrived.

“One of the [Shelter] workers really gave me a kick in the butt, and it woke me up to how serious things were, and how much I needed to change.”

Liam thinks much more clearly about the future now, and is taking steps to build the life that he wants. During his time at the Shelter he worked with staff to access a variety of supports that allowed him to move forward in some key ways.

“I STARTED RECONNECTING WITH MY FAMILY, AND DOING WORK PROGRAMS WITH STELLA’S CIRCLE AND CFY, AND EVENTUALLY I GOT INTO THE LILLY.”

Looking back on his struggles, Liam is proud of where he is today. His optimism and ambition is obvious, and he’s appreciative of the role that CFY played in helping him get to a more stable place in his life.

“The Shelter staff are really supportive...There’s a lot of care that goes on around here.”

Looking forward, Liam wants to go back to school and has aspirations of becoming a chef or entering the social work profession. He knows that with the right support, he can do anything.

“I WANT SOMETHING BIGGER...A CLEAN SLATE. YOU’VE JUST GOT TO MAKE SURE YOU DON’T LOSE YOURSELF.”



FROM BOATS TO BOWLS

In September 2017, our Momma Moments program partnered with Fishing for Success and Mallard Cottage to offer young, at-risk moms the opportunity to learn and participate in the traditional practice of hand line fishing, processing their catch, and producing gourmet fish stock from fish by-product. With a focus on sustainability and connection to the province's fishing heritage, this pilot project gave youth a chance to develop tangible employment skills and create a premium product that could be purchased by restaurants & customers alike.

5

Moms

40

Hours of
Experiential Learning

25

Hours of
Culinary Training



The ability to access employment is a key part of helping young people succeed and build independence. Whether they want to work at a CFY social enterprise or in the private job market, it's our job to give young people the support, resources, and training they need to meet their employment goals.

A YEAR OF GROWTH

Our Centralized Employment Support Program (CESP) had its first full year of operation in 2017-2018, and ended the year having supported 95 clients. CESP helps young people to identify what type of employment they want, then prepares them for entering the job market through pre-employment workshops, training, and wrap-around supports. By helping youth connect to their aspirations and build new skills—and by creating safe and supportive spaces to grow—the team helps young people overcome setbacks and challenges to find success in the workplace and take pride in their accomplishments.

SOCIAL ENTERPRISE TAKES OFF

Social enterprise has become a critical part of the youth employment strategy at Choices for Youth. Working closely with CESP, our social enterprises offer transitional employment opportunities in a range of sectors. This past year, we opened the doors to our newly expanded social enterprise production facility, allowing for a more streamlined and efficient approach to manufacturing, assembly, and fulfillment. In addition to the fulfillment of Project Succeed orders, we're excited to add food production, textile recycling, and prototyping the assembly of SmartICE sensors to our existing social enterprise roster, expanding the sustainable employment opportunities we can offer our youth.

Social enterprise and the CESP program act as a stepping stone for young people to move from a supportive work environment, to a more independent life. A full-time employment opportunity with CFY's social enterprise production facility enabled one young person to break the cycle of reliance on financial aid. This young person was able to transition away from income support and rely solely on their employment income from social enterprise. Through continued support they've now found employment within the private workforce.



Jumpstart Program Graduation 2017

ST. JOHN'S AND BEYOND

Our largest social enterprise, Impact Construction (IC) also had a big year, completing its first project outside the St. John's metro area. IC completed a full asbestos abatement job in Argentia and employed 12 young people full-time for 12 weeks as part of the project. This is major step for Impact Construction as we look to expand our social enterprise activities and youth support services into other regions across the province.

“STAFF ARE HERE TO SUPPORT YOUTH, TO TEACH THEM—BUT IT’S UP TO THEM TO DO THE WORK, AND YOU CAN SEE THEY’RE PROUD WHEN THEY’VE COMPLETED THE JOB.” -Corey Foley, Team Lead for Centralized Employment Support Program



Impact Construction Renovates
the New Family Reconnect Office

YOUTH EMPLOYED	EMPLOYMENT HOURS	REVENUE
35	22,772	\$1.183 M
7	2,190	\$106,068
7	599	\$3,151

PROVINCIAL EXPANSION

Impacting every region of Newfoundland and Labrador, youth homelessness is an issue with well documented solutions and best practices. By bringing together community stakeholders and making strategic use of coordinated and combined efforts for prevention, support, and intervention, our provincial expansion work tackles youth homelessness head on.

Through the summer and fall of 2017, and into the spring of 2018, staff from CFY hosted conversations throughout the province to better inform our commitment to bring programming to regions outside of St. John's. Our consultations revealed one key point: At-risk and homeless youth are better served by earlier support, services, and interventions closer to home. By the time an at-risk or homeless young person makes their way to St. John's, they have likely been struggling for some time with the unique challenges and lack of resources available to them in a rural setting.

LEGEND

-  Community Forum Locations
-  Meetings with Service Providers
-  Youth Focus Groups

OUR CONSULTATIONS INCLUDED

26
Communities

201
Attendees

150
One-on-Ones

65
Youth



“YOUTH IN OUR REGION HAVE EXPERIENCED MUCH TRAUMA...FINDING A PATH OUT OF THIS CYCLE REQUIRES APPROPRIATE HELP AND SUPPORT.”

- Service Provider, Central Labrador

Tapping into the knowledge of youth, service providers, governments, and businesses across the province, our goal is to build new partnerships to expand services and programs into 6 communities across the province within the next 2 years.

Through collaboration, we can overcome geographic challenges and offer services for youth that are closer to home, broadening the delivery of programs beyond the Avalon Peninsula. We are ready for this exciting next step, and to work together with partners and youth to bring CFY services to regions across the province, meeting the challenge of crisis-driven lifestyles and ongoing cycles of unstable housing at their source.

To read the full We Are Ready report detailing what we heard about services, supports, and opportunities for at-risk youth outside of St. John's, visit choicesforyouth.ca/expansion.



Strengthening families and connecting them with the support they need to create healthy homes and a stable future for their kids is vital to building thriving communities. We know that by keeping young people connected to family, and children to young parents, we can create positive outcomes for all family members.

According to the most recent report from the Office of the Child and Youth Advocate, of all the families in NL who are experiencing extremely low income:

4,448

Are Female-Led Single Parent Families

2,530

Are Couples with Children

2,320

Are Couples without Children

BUILDING AND STRENGTHENING CONNECTIONS

Reconnecting young people to family, when safe and appropriate to do so, creates a more positive life trajectory for youth. Our Family Reconnect Program was established in early 2017. It gives participants access to individual and family based counselling, mental health support, coping skills, and art therapy. This has proven to be invaluable as many families do not have access to counselling and additional support other than that offered at CFY.

"OUR FAMILY BASED PROGRAMS ARE SUCCESSFUL BECAUSE OF THE STRENGTH, COURAGE, AND RESILIENCY OF YOUNG PEOPLE AND THEIR WILLINGNESS TO LEARN FROM OTHERS."

-Jeannie Piercey, Momma Moments Program Coordinator

Reconnecting to family could mean reaching out to parents, siblings, aunts, uncles, or even grandparents. The goal is to help strengthen connections to a natural support network.

Family based therapy sessions play a vital role for many clients in the Family Reconnect program. In some cases, for parents struggling with their own mental illness, attending therapy to support the reconnection process becomes a key part in coping with their mental health while also rebuilding the relationship with their child.

FAMILY



GROWING UP

This year, the Momma Moments program added an additional weekly group session in St. John's, bringing the total to 3 groups: 2 in St. John's and 1 in Conception Bay South. All of our groups are at capacity, providing individualized wrap-around supports paired with a peer-to-peer and empowerment model. This gives young moms the opportunity to build new networks of support and build relationships with other moms who have faced many of the same struggles. By supporting young parents and their children, we are building strong families and breaking intergenerational cycles of poverty and homelessness.

IT TAKES A VILLAGE

Our programs partnered with many generous community supporters this year to give families the opportunity to better their own mental and physical well-being. One local dental office provided support to the Momma Moments program, including fitting one young mom with a new denture plate. The smile that was lost for this young woman has since been found, and on top of the long-term benefits to her physical health, has had an incredibly positive impact on her mental health, as well.

Our Momma Moments program was also the beneficiary of a partnership with The Maggie Davis Legacy Foundation. This local foundation recognized the importance of providing books and reading materials for at-risk, young families in our community, and started a book library for all 3 groups. This contribution has helped the group work towards their literacy goals and has given the moms and kids access to a variety of books, magazines, and educational games.

MOMMA
MOMENTS

62

Moms

90

Kids

We include child minding as part of our program model to reduce barriers to participation and make sure kids are supported too.

Moms and Kids Take a Break During the 2017 Learn to Camp Session



COLDEST NIGHT OF THE YEAR

This year, Choices for Youth partnered with local businesses, community groups, young people, and supporters to bundle up for its 5th Annual Coldest Night of the Year walk! This event raises awareness and dollars to support young people facing homelessness in our community. Thank you to all of this year's participants!

47	325	42,577
Teams	Walkers	Dollars



Charlie grew up in a rural NL community and found himself facing tough situations and limited options. Knowing that he couldn't return to his family home after seeking some treatment, he connected with CFY. After a short stay at the Shelter he joined the RallyForward Program.

“THE PEOPLE I HAVE AROUND ME ARE SO SUPPORTIVE...THEY'RE MY SECOND FAMILY. THEY'VE HELPED ME SO MUCH. WITH A SUPPORTIVE GROUP AROUND YOU...IT DOESN'T MATTER HOW BAD IT GETS, YOU CAN COME OUT OF IT.”

With the ongoing support of Outreach and RallyForward program staff, Charlie has reached some important milestones, including getting his driver's license. He's focused on taking care of himself mentally and physically, and has been working on rebuilding parts of his life that had broken down.

“I TAKE CARE OF MYSELF, WORK OUT OFTEN, EAT WELL EVERY DAY. YOU HAVE TO PUT IN WHAT YOU WANT TO GET OUT OF IT. THAT'S WHY I'M DOING SO WELL. I'M DOING IT FOR ME.”

Charlie has been actively looking for employment and is confident that things can only get better from here. The future looks bright for Charlie, and he is interested in becoming a motivational speaker and sharing his story and experiences to inspire others to make positive changes in their lives.



The Outreach and Youth Engagement Centre is the front door of Choices for Youth. It is a place where young people can have a hot meal, feel safe, and build trusting relationships. The Centre offers a broad array of programming and services, with a big focus on mental and physical health support.

For many of the young people who come to the Outreach Centre for a warm meal, to talk to a support worker, to discuss housing options or to just relax in a safe space, the on-site Public Health Nurse is often their only touchpoint with the healthcare system. Giving young people the opportunity to receive information or treatment in a safe and stigma-free setting, and from a provider they trust, is critical to addressing their primary care needs.

**ON-SITE PUBLIC
HEALTH NURSE**

916
Engagements

EMERGENCY RESPONSE

The instances of opioid overdoses in the St. John's metro region, and across Newfoundland and Labrador, have been rising in recent years. In response, a community taskforce was created to help educate the general population on the realities of opioid use—including the distribution of take-home Naloxone kits. Choices for Youth is a part of this partnership and distributes kits on-site at our Outreach Centre, which also offers training to spot the signs of an opioid overdose, using the emergency Naloxone injector, and effectively responding in overdose situations. The taskforce also hosted pop-ups at popular community events throughout the year, including the George Street Festival and St. John's Regatta, helping to raise awareness about opioid use in our community. Thanks to our partners at The Telegram, we were also able to share information with the entire community through newspaper advertisements on what to do and how to get help in an overdose emergency.

**TAKE HOME
NALOXONE KITS**

35

Kits Distributed

91

Individuals Trained



Take Home Naloxone Kits
Distributed by CFY

SAFE WORKS ACCESS PROGRAM

In the absence of perfect choices, we help youth to make the safest choice. This harm reduction principal guides all services and support programs at CFY. Partnering with the Safe Works Access Program (SWAP) has been a vital component to harm reduction at Choices for Youth. Through SWAP, young people are able to dispose of needles and have access to new, clean needles. Individuals accessing SWAP also receive information and resources from a CFY staff member to support them through any challenges or struggles that they identify.

**SWAP
ENGAGEMENTS**

300+

HEALTHY BODIES AND HEALTHY MINDS

From indoor wall climbing to snowshoeing, and magic card tournaments to canoeing, the team at Outreach helped young people participate in a variety of sports and activities that helped their bodies and their minds. Giving young people the opportunity to try new things is an important part of building healthy, social lives, and many young people find new hobbies, talents and passions as a result of the program. We are so appreciative of the many small businesses, local organizations, coaches and experts who supported the recreation program through the summer and winter months!

RECREATION
AT OUTREACH

20

Activities

84

Young People

With the support of the United Way of Newfoundland and Labrador, 7 young people and 2 youth mentors participated in the Artful therapeutic art program last year, completing 20 weekly sessions of guided art in a peer-to-peer support setting. Youth were able to learn to use watercolors, paint sugar skulls, create tie-dye shirts, sketch and so much more. Artful has helped build confidence, empower youth through creation, and give a cathartic outlet for young people to cope with their own mental health challenges.

“ART IS A HUGE RELEASE. IT’S IMPORTANT TO HAVE A RELEASE, AN OUTLET, A POSITIVE WAY OF EXPRESSING YOURSELF WHEN YOU’RE GOING THROUGH SOMETHING. WHEN I’M HAVING A BAD DAY, I JUST LET IT OUT THROUGH MY ART.”

-Tiffany, Artful Participant

Outreach Visits the
Wallnuts Climbing Centre



LEADING THE WAY

Supporting young people with transformative programs and services requires a commitment to collaboration and building innovative partnerships. At CFY, we are a part of multiple national coalitions and organizations that are sharing knowledge, best practices, and experiences that help inform the work we do every day to support vulnerable youth in our community.

HOUSING ON THE HILL DAY

In October 2017, Choices for Youth joined the Canadian Housing & Renewal Association and the Canadian Alliance to End Homelessness in Ottawa, along with leading community agencies across Canada to meet with Members of Parliament. Together, we worked towards the development of a comprehensive National Housing Strategy that prioritizes the needs of Canada's most vulnerable individuals, and contains commitments specifically to support urban, rural and northern Indigenous populations. We continue to play an important role in these conversations with a critical focus on ending and preventing homelessness.



INVESTING IN PROGRAM EVALUATION AND RESEARCH

Our programs hold a high bar on what it means to do great work. We focus on the needs of the individual and fundamentally start with an unwavering belief that with the right set of supports, young people can achieve just about anything.

In the past year, we created for the first time a role dedicated to research, evaluation and data analysis. We are proud to take this step as a commitment to continued excellence across all of our programs.

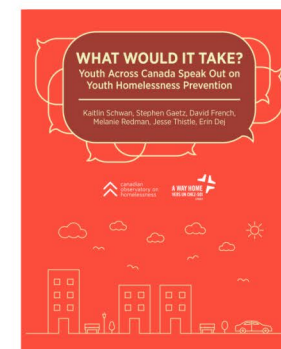
“Combining research & evaluation is the best way to ensure that supports we are offering to young people are the supports that they need, and that we can adapt to meaningful changes as they happen.”

- Ally Jamieson, Manager of Research & Evaluation

WHAT WOULD IT TAKE?

Choices for Youth, A Way Home Canada, and the Canadian Observatory on Homelessness came together to amplify the voices, insights and wisdom of youth in order to drive changes in policy and practices across Canada. The perspectives of youth in St. John's are included in this report which represents 12 communities across 7 provinces and territories. The report dives into their perspectives on delivering policies and practice that address 3 critical drivers of youth homelessness: Structural Factors, System Failures, and Individual and Relational Factors.

You can review all of the youth recommendations by downloading the report at: awayhome.ca



SOCIAL BUYING SYMPOSIUM

In January 2018, Choices for Youth partnered with Stella's Circle and Buy Social Canada to bring together community agencies, business leaders, and policy makers to collaboratively explore how Newfoundland and Labrador can leverage the incredible opportunities afforded by social enterprise development and social procurement policies.

"Social enterprise harnesses the power of opportunity. It allows youth to access fair and supportive employment designed to meet the needs and challenges of young people."

- Chelsey MacNeil
Director of Social Enterprise
Choices for Youth

Chelsey MacNeil on the
Social Buying Symposium
Panel Discussion



The event also launched *Untapped Potential: Social Enterprise as a Tool to Stimulate Economic Development*, co-authored by members of CFY's senior leadership team. *Untapped Potential* analyzes the current national social enterprise landscape, and the social and economic value of social enterprise, while providing key recommendations to build a thriving social enterprise ecosystem in our province. To read the report, visit: choicesforyouth.ca/untapped-potential.



BELL LET'S TALK

CHOICES
YOUTH
KEEPING AT-RISK YOUTH SECURE
THROUGH HOUSING, EDUCATION AND
EMPLOYMENT FOR
OVER 20 YEARS

BELL LET'S TALK COMMUNITY GRANT

This year Choices for Youth received its first Bell Let's Talk Community Grant. This grant gave us the resources to start a mental health peer support program for male identifying and gender non-conforming youth who have mental health or substance abuse challenges. This is the first group of its kind in our community that is youth-focused with specific mental wellness outcomes.

22,000

Dollars

16

Sessions

112

Participants

"The Men's Support Group means so much to me. It is a healthy, safe place to express how I am feeling, and to be listened to and heard in a non-judgemental way."

-Randy, Youth Facilitator

Andrew Harvey Speaks at the
Bell Let's Talk Funding Announcement



HOME DEPOT ORANGE DOOR CAMPAIGN

In 2014, the Home Depot Canada Foundation started a campaign to benefit organizations that directly support individuals facing homelessness throughout Canada. The Orange Door Campaign gives Home Depot customers the opportunity to donate while making a purchase in-store. Each Home Depot location has a local charity that it supports, so the dollars donated at each store directly help people in need in each community. We are proud to partner with the local Home Depot in St. John's who continue to believe in the young people we serve, offering employment opportunities and continuing to educate their employees and customers both about the challenges facing young people in our province and how housing and support can unlock their potential.

1

Store

5

Years

28,226

Dollars



THANK YOU TO

Canada

Newfoundland
Labrador



MEDAVIE
HEALTH FOUNDATION



The Telegram



VERAFIN



ST. JOHN'S





Crosbie Salamis Ltd.

Killick Capital

Jillian Penney

Freedom Foods

Body Quest

Steers Insurance Social Club

David Fong

Wadden Peddigrew Hogan

Martek Morgan Finch

Rotary International
(Naturals Group of Rotary)

Trades NL

Roebathan,
Mckay, & Marshall

Rogers Rogers Moyse

Subsea Inc., Frontier

Transcore

Glendenning Golf



OUR PARTNERS



CHOICES FOR YOUTH



choicesforyouth.ca



info@choicesforyouth.ca



[/choicesforyouth](https://www.facebook.com/choicesforyouth)



[@choicesforyouth](https://twitter.com/choicesforyouth)



[/choices-for-youth](https://www.linkedin.com/company/choices-for-youth)

MAIN OFFICE

261 Duckworth Street
St. John's, NL A1C 1G9
P: 709.754.0446
F: 709.726.3125

OUTREACH & YOUTH ENGAGEMENT

12-16 Carter's Hill Place
St. John's, NL A1C 6N5
P: 709.754.3047
F: 709.754.6102

THE CHOICES SHELTER

12-16 Carter's Hill Place
St. John's, NL A1C 6N5
P: 709.757.3050
F: 709.757.3051

THE LILLY

52-58 Bond Street
St. John's, NL A1C 1S8
P: 709.739.1019
F: 709.739.1091

SOCIAL ENTERPRISE AND EMPLOYMENT CENTRE

117 Ropewalk Lane
St. John's, NL A1E 3C9