

# **Skin Notation (SK) Profile**

## **Morpholine**

**[CAS No. 110-91-8]**

**Department of Health and Human Services**  
Centers for Disease Control and Prevention  
National Institute for Occupational Safety and Health

## Disclaimer

Mention of any company or product does not constitute endorsement by the National Institute for Occupational Safety and Health (NIOSH). In addition, citations to Web sites external to NIOSH do not constitute NIOSH endorsement of the sponsoring organizations or their programs or products. Furthermore, NIOSH is not responsible for the content of these Web sites.

## Ordering Information

To receive this document or information about other occupational safety and health topics, contact NIOSH:

Telephone: 1-800-CDC-INFO (1-800-232-4636)

TTY: 1-888-232-6348

E-mail: [cdcinfo@cdc.gov](mailto:cdcinfo@cdc.gov)

Or visit the NIOSH Web site: [www.cdc.gov/niosh](http://www.cdc.gov/niosh)

For a monthly update on news at NIOSH, subscribe to *NIOSH eNews* by visiting [www.cdc.gov/niosh/eNews](http://www.cdc.gov/niosh/eNews).

## Suggested Citation

NIOSH [20XX]. NIOSH skin notation profile: Morpholine. By Hudson NL, Dotson GS. Cincinnati, OH: U.S. Department of Health and Human Services, Centers for Disease Control and Prevention, National Institute for Occupational Safety and Health, DHHS (NIOSH) Publication No. XXX

DHHS (NIOSH) Publication No. XXX

## Foreword

As the largest organ of the body, the skin performs multiple critical functions, such as serving as the primary barrier to the external environment. For this reason, the skin is often exposed to potentially hazardous agents, including chemicals, which may contribute to the onset of a spectrum of adverse health effects ranging from localized damage (e.g., irritant contact dermatitis and corrosion) to induction of immune-mediated responses (e.g., allergic contact dermatitis and pulmonary responses), or systemic toxicity (e.g., neurotoxicity and hepatotoxicity). Understanding the hazards related to skin contact with chemicals is a critical component of modern occupational safety and health programs.

In 2009, the National Institute for Occupational Safety and Health (NIOSH) published *Current Intelligence Bulletin (CIB) 61 – A Strategy for Assigning New NIOSH Skin Notations* [NIOSH 2009-147]. This document provides the scientific rationale and framework for the assignment of multiple hazard-specific skin notations (SK) that clearly distinguish between the systemic effects, direct (localized) effects, and immune-mediated responses caused by skin contact with chemicals. The key step within assignment of the hazard-specific SK is the determination of the hazard potential of the substance, or its potential for causing adverse health effects as a result of skin exposure. This determination entails a health hazard identification process that involves use of the following:

- Scientific data on the physicochemical properties of a chemical
- Data on human exposures and health effects
- Empirical data from *in vivo* and *in vitro* laboratory testing
- Computational techniques, including predictive algorithms and mathematical models that describe a selected process (e.g., skin permeation) by means of analytical or numerical methods.

This *Skin Notation Profile* provides the SK assignments and supportive data for morpholine. In particular, this document evaluates and summarizes the literature describing the hazard potential of the substance and its assessment according to the scientific rationale and framework outlined in CIB 61. In meeting this objective, this *Skin Notation Profile* intends to inform the audience—mostly occupational health practitioners, researchers, policy- and decision-makers, employers, and workers in potentially hazardous workplaces—so that improved risk-management practices may be developed to better protect workers from the risks of skin contact with the chemicals of interest.

John Howard, M.D.  
Director  
National Institute for Occupational Safety and Health  
Centers for Disease Control and Prevention

# Contents

<a href="#">Foreword</a> .....	iii
<a href="#">Abbreviations</a> .....	v
<a href="#">Glossary</a> .....	vii
<a href="#">Acknowledgments</a> .....	viii
<a href="#">1.0 Introduction</a> .....	1
<a href="#">1.1 General Substance Information</a> .....	1
<a href="#">1.2 Purpose</a> .....	1
<a href="#">1.3 Overview of SK Assignment</a> .....	1
<a href="#">2.0 Systemic Toxicity from Skin Exposure (SK: SYS)</a> .....	2
<a href="#">3.0 Direct Effects on Skin (SK: DIR)</a> .....	3
<a href="#">4.0 Immune-mediated Responses (SK: SEN)</a> .....	4
<a href="#">5.0 Summary</a> .....	4
<a href="#">References</a> .....	6
<a href="#">Appendix: Calculation of the SI Ratio for Morpholine</a> .....	8
<a href="#">Overview</a> .....	8
<a href="#">Calculation</a> .....	10
<a href="#">Appendix References</a> .....	11

*This information is distributed solely for the purpose of pre-dissemination peer review under applicable information quality guidelines. It has not been formally disseminated by the National Institute for Occupational Safety and Health. It does not represent and should not be construed to represent any agency determination or policy.*

## Abbreviations

ACGIH	American Conference of Governmental Industrial Hygienists
ATSDR	Agency for Toxic Substances and Disease Registry
CIB	Current Intelligence Bulletin
cm <sup>2</sup>	squared centimeter(s)
cm/hr	centimeter(s) per hour
cm/s	centimeter(s) per second
DEREK	Deductive Estimation of Risk from Existing Knowledge
DIR	skin notation indicating the potential for direct effects to the skin following contact with a chemical
EC	European Commission
g	gram(s)
g/L	gram(s)/liter
GHS	Globally Harmonized System for Classification and Labelling of Chemicals
GPMT	guinea pig maximization test
hr	hour(s)
IARC	International Agency for Research on Cancer
IPCS	International Program for Chemical Safety
(IRR)	subnotation of SK: DIR indicating the potential for a chemical to be a skin irritant following exposure to the skin
$k_{aq}$	coefficient in the watery epidermal layer
$k_p$	skin permeation coefficient
$k_{pol}$	coefficient in the protein fraction of the stratum corneum
$k_{psc}$	permeation coefficient in the lipid fraction of the stratum corneum
LD <sub>50</sub>	dose resulting in 50% mortality in the exposed population
LD <sub>Lo</sub>	dermal lethal dose
LLNA	local lymph node assay
LOAEL	lowest-observed-adverse-effect level
log $K_{OW}$	base-10 logarithm of a substance's octanol–water partition
$M$	molarity
m <sup>3</sup>	cubic meter(s)
mg	milligram(s)
mg/cm <sup>2</sup> /hr	milligram(s) per square centimeter per hour
mg/kg	milligram(s) per kilogram body weight
mg/m <sup>3</sup>	milligram(s) per cubic meter
mL	milliliter(s)
mL/kg	milliliter(s) per kilogram body weight
MW	molecular weight
NIOSH	National Institute for Occupational Safety and Health
NOAEL	no-observed-adverse-effect level

*This information is distributed solely for the purpose of pre-dissemination peer review under applicable information quality guidelines. It has not been formally disseminated by the National Institute for Occupational Safety and Health. It does not represent and should not be construed to represent any agency determination or policy.*

NTP	National Toxicology Program
OEL	occupational exposure limit
OSHA	Occupational Safety and Health Administration
ppm	parts per million
REL	recommended exposure limit
RF	retention factor
SEN	skin notation indicating the potential for immune-mediated reactions following exposure of the skin
SI ratio	ratio of skin dose to inhalation dose
SK	skin notation
$S_w$	solubility in water
SYS	skin notation indicating the potential for systemic toxicity following exposure of the skin
USEPA	United States Environmental Protection Agency
$\mu\text{g}$	microgram(s)
$\mu\text{g}/\text{cm}^2$	microgram(s) per square centimeter
$\mu\text{g}/\text{cm}^2/\text{hr}$	microgram(s) per square centimeter per hour
$\mu\text{L}$	microliter(s)
$\mu\text{mol}$	micromole(s)

## Glossary

**Absorption**—The transport of a chemical from the outer surface of the skin into both the skin and systemic circulation (including penetration, permeation, and resorption).

**Acute exposure**—Contact with a chemical that occurs once or for only a short period of time.

**Cancer**—Any one of a group of diseases that occurs when cells in the body become abnormal and grow or multiply out of control.

**Contaminant**—A chemical that is (1) unintentionally present within a neat substance or mixture at a concentration less than 1.0% or (2) recognized as a potential carcinogen and present within a neat substance or mixture at a concentration less than 0.1%.

**Cutaneous (or percutaneous)**—Referring to the skin (or through the skin).

**Dermal**—Referring to the skin.

**Dermal contact**—Contact with (touching) the skin.

**Direct effects**—Localized, non-immune-mediated adverse health effects on the skin, including corrosion, primary irritation, changes in skin pigmentation, and reduction/disruption of the skin barrier integrity, occurring at or near the point of contact with chemicals.

**Immune-mediated responses**—Responses mediated by the immune system, including allergic responses.

**Sensitization**—A specific immune-mediated response that develops following exposure to a chemical, which, upon re-exposure, can lead to allergic contact dermatitis (ACD) or other immune-mediated diseases such as asthma, depending on the site and route of re-exposure.

**Substance**—A chemical.

**Systemic effects**—Systemic toxicity associated with skin absorption of chemicals after exposure of the skin.

## Acknowledgments

This document was developed by the Education and Information Division (Paul Schulte, Ph.D., Director). G. Scott Dotson, Ph.D., was the project officer for this document, assisted in great part by Naomi Hudson, Dr.P.H., MPH, Todd Niemeier, M.Sc., and Berran Yucesoy, Ph.D. The basis for this document was a report (*Toxicology Excellence for Risk Assessment [TERA]*) contracted by NIOSH and prepared by Bernard Gadagbui, Ph.D., and Andrew Maier, Ph.D.

For their contribution to the technical content and review of this document, special acknowledgment is given to the following NIOSH personnel:

### **Denver Field Office**

Eric Esswein, M.Sc.

### **Division of Applied Research and Technology**

Clayton B'Hymer, Ph.D.

John Snawder, Ph.D.

Mark Toraason, Ph.D.

### **Division of Respiratory Disease Studies**

Gregory A. Day, Ph.D.

Aleksander Stefaniak, Ph.D.

### **Division of Surveillance, Hazard Evaluations, and Field Studies**

Matt Dahm, M.Sc.

Aaron Sussell, Ph.D.

Loren Tapp, M.D.

### **Education and Information Division**

Devin Baker, M.Ed.

Charles L. Geraci, Ph.D.

Thomas J. Lentz, Ph.D.

Richard Niemeier, Ph.D.

Ralph Zumwalde, M.Sc.

### **Health Effects Laboratory Division**

Stacey Anderson, Ph.D.

H. Fredrick Frasch, Ph.D.

Michael Luster, Ph.D.

Anna Shvedova, Ph.D.

Paul Siegel, Ph.D.



## **National Personal Protective Technology Laboratory**

Heinz Ahlers, J.D., M.Sc.

Angie Shepherd

For their contribution to the technical content and review of this document, special acknowledgment is given to the following CDC personnel:

## **Office of Surveillance, Epidemiology and Laboratory Services/Epidemiology and Analysis Program Office**

Barbara Landreth, M.A.

In addition, special appreciation is expressed to the following individuals for serving as independent, external reviewers and providing comments that contributed to the development or improvement of this document:

- G. Frank Gerberick, Ph.D., The Procter and Gamble Company, Cincinnati, OH
- Dori Germolec, Ph.D., National Toxicology Program, National Institute for Environmental Health Sciences, Research Triangle, NC
- Ben Hayes, M.D., Ph.D., Division of Dermatology, Vanderbilt School of Medicine, Nashville, TN
- Jennifer Sahmel, M.Sc., CIH, ChemRisk, Boulder, CO
- James Taylor, M.D., Industrial Dermatology, The Cleveland Clinic, Cleveland, OH

*This information is distributed solely for the purpose of pre-dissemination peer review under applicable information quality guidelines. It has not been formally disseminated by the National Institute for Occupational Safety and Health. It does not represent and should not be construed to represent any agency determination or policy.*

# 1.0 Introduction

## 1.1 General Substance Information

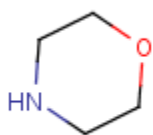
**Chemical:** Morpholine

**CAS No:** 110-91-8

**Molecular weight (MW):** 87.1

**Molecular formula:** C<sub>4</sub>H<sub>9</sub>ON

**Structural formula:**



**Synonyms:** Diethylene imidoxide; Diethylene oximide; Tetrahydro-1,4-oxazine; Tetrahydro-p-oxazine

**Uses:** Morpholine is used primarily as a rubber accelerator, boiler water additive, and solvents; an estimated 44 million pounds of the chemical was used in 1992 [HSDB 2014].

## 1.2 Purpose

This skin notation profile presents (1) a brief summary of epidemiological and toxicological data associated with skin contact with morpholine and (2) the rationale behind the hazard-specific skin notation (SK) assignment for morpholine. The SK assignment is based on the scientific rationale and logic outlined in the *Current Intelligence Bulletin (CIB) 61: A Strategy for Assigning New NIOSH Skin Notations* [NIOSH 2009]. The summarized information and health hazard assessment are limited to an evaluation of the potential health effects of dermal exposure to morpholine. A literature search was conducted through February 2013 to identify information on morpholine, including but not limited to data relating to its toxicokinetics, acute toxicity, repeated-dose systemic toxicity, carcinogenicity, biological system/function-specific effects (including reproductive and developmental effects and immunotoxicity), irritation, and sensitization. Information was considered from studies of humans, animals, or appropriate modeling systems that are relevant to assessing the effects of dermal exposure to morpholine.

## 1.3 Overview of SK Assignment

Morpholine is potentially capable of causing numerous adverse health effects following skin contact. A critical review of available data has resulted in the following SK assignment for morpholine: **SK: SYS-DIR (COR)**. Table 1 provides an overview of the critical effects and data used to develop the SK assignment for morpholine.

*This information is distributed solely for the purpose of pre-dissemination peer review under applicable information quality guidelines. It has not been formally disseminated by the National Institute for Occupational Safety and Health. It does not represent and should not be construed to represent any agency determination or policy.*

**Table 1. Summary of the SK Assignment for morpholine**

<b>Skin Notation</b>	<b>Critical Effect</b>	<b>Available Data</b>
SK: SYS	Liver, kidney, spleen	Sufficient animal data
SK: DIR (COR)	Skin corrosivity	Sufficient animal data

## **2.0 Systemic Toxicity from Skin Exposure (SK: SYS)**

No toxicokinetic data following dermal exposure to morpholine were identified. The potential of morpholine to pose a skin absorption hazard was also evaluated, with use of a predictive algorithm for estimating and evaluating the health hazards of dermal exposure to substances [NIOSH 2009]. The evaluation method compares an estimated dose accumulated in the body from skin absorption and an estimated dose from respiratory absorption associated with a reference occupational exposure limit. On the basis of this algorithm, a ratio of the skin dose to the inhalation dose (SI ratio) of 1.76 was calculated for morpholine. An SI ratio of  $\geq 0.1$  indicates that skin absorption may significantly contribute to the overall body burden of a substance [NIOSH 2009]; therefore, morpholine is considered to be absorbed through the skin following dermal exposure. Additional information on the SI ratio and the variables used in its calculation are included in the appendix.

No human dermal lethal dose ( $LD_{Lo}$ ) estimates were identified. A minimum lethal dose of 0.9 grams per kilogram body weight [g/kg; 900 milligrams per kilogram body weight (mg/kg)] was reported in guinea pigs [Shea 1939]. The reported dermal  $LD_{50}$  value (the dose resulting in 50% mortality in the exposed animals) was 0.5 milliliters per kilogram (mL/kg) [corresponding to 503.5 mg/kg] in the rabbit [Smyth et al. 1954]. Because the reported acute dermal  $LD_{50}$  value for rats and the minimum lethal dose for guinea pigs were lower than the critical dermal  $LD_{50}$  value of 2,000 mg/kg that identifies chemical substances with the potential for acute toxicity [NIOSH 2009], morpholine is considered acutely toxic following dermal exposure.

No epidemiological studies or human case reports or repeated-dose, sub-chronic, or chronic dermal toxicity studies in animals were identified. However, Shea [1939] reported a dermal toxicity study in rabbits and guinea pigs exposed to morpholine for up to 2 weeks to 900 mg/kg-day of diluted (aqueous) (rabbits) or undiluted (guinea pigs). In this study, all animals died before the eleventh (rabbits) or thirteenth (guinea pigs) dose. Morpholine at this dose caused necrosis of the liver and kidney tubules (rabbits and guinea pigs) and congestion of the spleen (rabbits). Although prolonged dermal exposure studies were not identified, the Shea [1939] study suggests the potential for effects at doses lower than the critical dermal No-Observed-Adverse-Effect-Level (NOAEL) value of 1000 mg/kg for repeat-dose toxicity that identifies chemical substances with the potential for repeated-dose dermal toxicity [NIOSH 2009]. Therefore, morpholine is considered to be systemically toxic, causing liver, kidney and spleen effects, following repeated dermal exposure.

No standard toxicity or specialty studies were identified that evaluated biological system/function specific effects (including reproductive and developmental effects and immunotoxicity) following dermal exposure to morpholine. No studies were identified that evaluated the potential of morpholine to be a carcinogen in humans or animals following dermal exposure. Table 2 summarizes carcinogenic designations of multiple governmental and nongovernmental organizations for morpholine.

**Table 2. Summary of the carcinogenic designations\* for morpholine by numerous governmental and nongovernmental organizations**

<b>Organization</b>	<b>Carcinogenic designation</b>
NIOSH [2005]	No designation
NTP [2014]	No designation
USEPA [2015]	No designation
European Parliament [2008]	No GHS designation
IARC [2012]	Group 3: Not classifiable as to its carcinogenicity to humans
EC [2013] <sup>†</sup>	No designation
ACGIH [2001]	A4: Not classifiable as carcinogenic to humans

ACGIH = American Conference of Governmental Industrial Hygienists; EC = European Commission, Joint Research, Institute for Health and Consumer Protection; GHS = Globally Harmonized System for Classification and Labelling of Chemicals; IARC = International Agency for Research on Cancer; NIOSH = National Institute for Occupational Safety and Health; NTP = National Toxicology Program; USEPA = United States Environmental Protection Agency.

\* The listed cancer designations were based on data from nondermal (such as oral or inhalation) exposure since studies using the dermal route of exposure were unavailable.

<sup>†</sup>Date accessed.

Although no toxicokinetic data were identified to evaluate the potential of morpholine to be absorbed through the skin, data from acute dermal toxicity study in rabbits [**Smyth et al. 1954**]<sup>1</sup> and a short-term dermal toxicity study in guinea pigs and rabbits [**Shea 1939**] are sufficient to suggest that that morpholine can be absorbed by the skin, systemically available, and toxic, with the potential to cause liver, kidney and spleen effects following repeated exposure. Therefore, on the basis of the data for this assessment, morpholine is assigned the SK: SYS notation.

### 3.0 Direct Effects on Skin (SK: DIR)

Only one study was identified that reported the potential of morpholine to have direct effects on human skin. Shea [1939] reported that undiluted morpholine applied to the human fingertip caused cracking of the cuticle and epithelium of the nail bed and burning sensations. Evidence of skin corrosivity of morpholine is well-documented in experimental animals. Occluded topical application of 900 mg/kg of the undiluted or un-neutralized morpholine as a single dose or same dose of diluted morpholine applied daily for up to two weeks caused necrosis of the skin, inflammation, edema, and severe burning in rabbits [Shea 1939]. Guinea pigs receiving occluded, daily topical application of 900 mg/kg undiluted morpholine for up two weeks also exhibited edema and necrosis of the skin [Shea 1939]. Smyth [1954]

<sup>1</sup>References in **bold** text indicate studies that serve as the basis of the SK assignments.

reported that topical application of 0.001 mL of undiluted morpholine [corresponding to 1 mg] resulted in skin necrosis in rabbits within 24 hours. Wang and Suskind [1988] reported 0.1 g applications of 0.5, 2, 5 and 10% morpholine concentrations produced no irritation when applied to 1.5 squared centimeter (cm<sup>2</sup>) of the shaved skin of guinea pigs under occlusive conditions.

Evidence of direct skin effects of morpholine in humans and animals are also provided by *in vitro* studies. Gay et al. [1992] applied morpholine to living skin equivalent (LSE), collagen-fibroblast lattice from which human epidermal keratinocytes forms a stratified epidermis. Concentrations greater than 1% morpholine (by weight) were required to produce inflammation, indicative of irritation in both rabbit and human LSE. In a similar study conducted by van de Sandt and Rutten [1995], rabbit cell cultures administered 5% morpholine solution exhibited no changes. The structure-activity relationship model, Deductive Estimation of Risk from Existing Knowledge (*DEREK*) for Windows, predicted morpholine to be negative for skin irritation.

Based on the results of the studies that evaluated the direct effects of undiluted morpholine in animals [Shea 1939; Smyth 1954], there is sufficient information that suggests that morpholine is corrosive to the skin. Therefore, on the basis of the data for this assessment, morpholine is assigned the SK: DIR (COR) notation.

#### 4.0 Immune-mediated Responses (SK: SEN)

No evidence was identified in human studies to suggest that morpholine has the potential to produce skin sensitization. Animal data was limited to a single study. In a modified Buehler test [Wang and Suskind 1988], 10 guinea pigs were administered 0.1 g morpholine in 5% petrolatum under occlusion on clipped napes for 1 hour for 3 days/week for 2 weeks. Two weeks after the final dose, the guinea pigs were challenged with 0.1, 0.5, and 2 % morpholine concentrations, and no sensitization was observed; however, Wang and Suskind [1988] reported cross-sensitization reactions when animals were initially sensitized with 4,4-dithiodimorpholine (DTDM) or morpholinyl-mercaptobenzothiazole (MMBT) and then challenged with morpholine. The structure activity relationship model, *DEREK* for Windows, predicted morpholine to be negative for skin sensitization.

The modified Buehler test identified suggests that morpholine is not a skin sensitizer, but can cross-react with structurally similar chemicals. However, this information is considered insufficient as the basis for assigning a SK-SYS notation for morpholine. Therefore, on the basis of the data for this assessment, morpholine is not assigned the SK: SEN notation.

#### 5.0 Summary

No toxicokinetic data were identified to evaluate the potential of morpholine to be absorbed through the skin. However, data from acute dermal toxicity study in rabbits [Smyth et al. 1954] and a short-term dermal toxicity study in guinea pigs and rabbits [Shea 1939] are sufficient to indicate that morpholine has the potential to be absorbed through the skin, be systemically available and toxic, with the potential to cause liver, kidney and spleen effects following repeated exposure. Available studies in animals

indicate that undiluted morpholine is corrosive to the skin [Shea 1939; Smyth 1954]. Results from a modified Buehler test suggest that morpholine is not likely to cause skin sensitization, but can cross-react with structurally similar chemicals. Therefore, on the basis of these assessments, morpholine is assigned a composite skin notation of **SK: SYS-DIR (COR)**.

Table 3 summarizes the skin hazard designations for morpholine previously issued by NIOSH and other organizations. The equivalent dermal designation for morpholine, according to the Global Harmonization System (GHS) of Classification and Labelling of Chemicals, is Acute Toxicity Category 4 (Harmful in contact with the skin) and Skin Corrosion Category 1B (Causes severe skin burns and eye damage) [European Parliament 2008].

**Table 3. Summary of previous skin hazard designations for morpholine**

<b>Organization</b>	<b>Skin hazard designation</b>
NIOSH [2005]	[skin]: Potential for dermal absorption
OSHA [2015]*	[skin]: Potential for dermal absorption
ACGIH [2001]	[skin]: Based on report of human dermal penetration and a dermal LD <sub>50</sub> for 24-hour skin contact of 0.5 mL/kg in rats
EC [2013]*	R21: Harmful if in contact with skin R34: Causes burns

ACGIH = American Conference of Governmental Industrial Hygienists; EC = European Commission, Joint Research, Institute for Health and Consumer Protection; NIOSH = National Institute for Occupational Safety and Health; OSHA = Occupational Safety and Health Administration.

\*Date accessed.

## References

**Note:** Asterisks (\*) denote sources cited in text; daggers (†) denote additional resources.

\*ACGIH [2001]. Morpholine. In: Documentation of threshold limit values and biological exposure indices 7th ed., Vol. 2. Cincinnati, OH: American Conference of Governmental Industrial Hygienists.

\*EC (European Commission) [ND]. Morpholine. In: EINICS (European Inventory of Existing Commercial Chemical Substances), <http://esis.jrc.ec.europa.eu/>. Accessed: 05-14-13.

\*European Parliament, Council of the European Union [2008]. Regulation (EC) No 1272/2008 of the European Parliament and of the Council of 16 December 2008 on classification, labelling and packaging of substances and mixtures, amending and repealing Directives 67/548/EEC and 1999/45/EC, and amending Regulation (EC) No 1907/2006. OJEU, Off J Eur Union L353:1–1355, <http://eur-lex.europa.eu/LexUriServ/LexUriServ.do?uri=OJ:L:2008:353:0001:1355:EN:PDF>. Accessed: 01-28-15.

†Fisher AA. [1978]. Reports from the Second International Contact Dermatitis Symposium. Part III [proceedings]. *Cutis* 22: 272-289.

\*Gay R, Swiderek M, Nelson D, Ernesti A. [1992]. The living skin equivalent as a model in vitro for ranking the toxic potential of dermal irritants. *Toxic in Vitro* 6(4): 303-315.

†Harbison RD, Marino DJ, Conaway CC, Rubin LF, Gandy J. [1989]. Chronic morpholine exposure of rats. *Fund. Appl. Toxicol.* 12:491–507.

\*HSDB (Hazardous Substances Data Bank) [2014]. Morpholine. In: HSDB (Hazardous Substances Data Bank), <http://toxnet.nlm.nih.gov/cgi-bin/sis/search2/f?./temp/~iHMM77:1>. Accessed: 01-28-15.

\*IARC (International Agency for Research on Cancer) [2012]. Agents reviewed by the IARC monographs. In: IARC monographs on the evaluation of carcinogenic risks to humans, <http://monographs.iarc.fr/ENG/Monographs/PDFs/index.php>. Accessed: 01-28-15.

\*NIOSH [2005]. NIOSH pocket guide to chemical hazards. Cincinnati, OH: U.S. Department of Health and Human Services, Centers for Disease Control and Prevention, National Institute for Occupational Safety and Health, DHHS (NIOSH) Publication No. 2005-149, <http://www.cdc.gov/niosh/npg/npgd0211.html>. Accessed: 01-28-15.

\*NIOSH [2009]. Current intelligence bulletin 61: a strategy for assigning new NIOSH skin notations. Cincinnati, OH: U.S. Department of Health and Human Services, Centers for Disease Control and Prevention, National Institute for Occupational Safety and Health, DHHS (NIOSH) Publication No. 2009-147 [<http://www.cdc.gov/niosh/docs/2009-147/pdfs/2009-147.pdf>]. Accessed 01-28-15.

\*NTP [2014]. Report on Carcinogens. Thirteenth Edition; U.S. Department of Health and Human Services, Public Health Service. National Toxicology Program, <http://ntp.niehs.nih.gov/pubhealth/roc/roc13/index.html>. Accessed: 01-28-15.

\*OSHA [ND]. Morpholine. In: OSHA occupational chemical database, <http://www.osha.gov/chemicaldata/chemResult.html?recNo=120>. Accessed: 01-28-15.

\*Shea TE [1939]. The acute and sub-acute toxicity of morpholine. *J. Ind. Hyg. Toxicol.*, 21(7): 236-245.

\*Smyth Jr. HF, Carpenter CP, Weil CS, Pozzani UC [1954]. Range-Finding Toxicity Data. List V. *Arch. Ind. Hyg. Occup. Med.* 10:61–68.

†UNECE (United Nations Economic Commission for Europe) [2007]. Part 3: health hazards. In: Globally harmonized system of classification and labeling of chemical (GHS): third revised edition, [http://www.unece.org/trans/danger/publi/ghs/ghs\\_rev02/English/03e\\_part3.pdf](http://www.unece.org/trans/danger/publi/ghs/ghs_rev02/English/03e_part3.pdf). Accessed: 01-28-15.

\*USEPA [2015]. Morpholine. In: Integrated Risk Information System, <http://www.epa.gov/iris/>. Accessed: 01-28-15.

\*Van De Sandt JJM, Rutten AAJJL [1995]. Differential effects of chemical irritants in rabbit and human skin organ cultures. *Toxic in Vitro* 9(2): 157-168.

\*Wang X, Suskind RR. [1988]. Comparative Studies of the Sensitization Potential of Morpholine, 2-Mercaptobenzothiazole and 2 of Their Derivatives in Guinea Pigs. *Contact Dermatitis* 19 (1): 11-5.



## Appendix: Calculation of the SI Ratio for Morpholine

This appendix presents an overview of the SI ratio and a summary of the calculation of the SI ratio for morpholine. Although the SI ratio is considered in the determination of a substance's hazard potential following skin contact, it is intended only to serve as supportive data during the assignment of the NIOSH SK. An in-depth discussion on the rationale and calculation of the SI ratio can be found in Appendix B of the *Current Intelligence Bulletin (CIB) 61: A Strategy for Assigning New NIOSH Skin Notations* [NIOSH 2009].

### Overview

The SI ratio is a predictive algorithm for estimating and evaluating the health hazards of skin exposure to substances. The algorithm is designed to evaluate the potential for a substance to penetrate the skin and induce systemic toxicity [NIOSH 2009]. The goals for incorporating this algorithm into the proposed strategy for assigning SYS notation are as follows:

- (1) Provide an alternative method to evaluate substances for which no clinical reports or animal toxicity studies exist or for which empirical data are insufficient to determine systemic effects.
- (2) Use the algorithm evaluation results to determine whether a substance poses a skin absorption hazard and should be labeled with the SYS notation.

The algorithm evaluation includes three steps:

- (1) determining a skin permeation coefficient ( $k_p$ ) for the substance of interest,
- (2) estimating substance uptake by the skin and respiratory absorption routes, and
- (3) evaluating whether the substance poses a skin exposure hazard.

The algorithm is flexible in the data requirement and can operate entirely on the basis of the physicochemical properties of a substance and the relevant exposure parameters. Thus, the algorithm is independent of the need for biologic data. Alternatively, it can function with both the physicochemical properties and the experimentally determined permeation coefficient when such data are available and appropriate for use.

The first step in the evaluation is to determine the  $k_p$  for the substance to describe the transdermal penetration rate of the substance [NIOSH 2009]. The  $k_p$ , which represents the overall diffusion of the substance through the stratum corneum and into the blood capillaries of the dermis, is estimated from the compound's molecular weight ( $MW$ ) and base-10 logarithm of its octanol–water partition coefficient ( $\log K_{ow}$ ). In this example,  $k_p$  is determined for a substance with use of Equation 1. A self-consistent set of units must be used, such as centimeters per hour (cm/hr), outlined in Table A1. Other model-based estimates of  $k_p$  may also be used [NIOSH 2009].

### Equation 1: Calculation of Skin Permeation Coefficient ( $k_p$ )

$$k_p = \frac{1}{\frac{1}{k_{psc} + k_{pol}} + \frac{1}{k_{aq}}}$$

where  $k_{psc}$  is the permeation coefficient in the lipid fraction of the stratum corneum,  $k_{pol}$  is the coefficient in the protein fraction of the stratum corneum, and  $k_{aq}$  is the coefficient in the watery epidermal layer. These components are individually estimated by

$$\begin{aligned}\log k_{psc} &= -1.326 + 0.6097 \times \log K_{ow} - 0.1786 \times MW^{0.5} \\ k_{pol} &= 0.0001519 \times MW^{-0.5} \\ k_{aq} &= 2.5 \times MW^{-0.5}\end{aligned}$$

The second step is to calculate the biologic mass uptake of the substance from skin absorption (skin dose) and inhalation (inhalation dose) during the same period of exposure. The skin dose is calculated as a mathematical product of the  $k_p$ , the water solubility ( $S_w$ ) of the substance, the exposed skin surface area, and the duration of exposure. Its units are milligrams (mg). Assume that the skin exposure continues for 8 hours to unprotected skin on the palms of both hands (a surface area of 360 squared centimeters [ $\text{cm}^2$ ]).

### Equation 2: Determination of Skin Dose

$$\begin{aligned}\text{Skin dose} &= k_p \times S_w \times \text{Exposed skin surface area} \times \text{Exposure time} \\ &= k_p(\text{cm/hr}) \times S_w(\text{mg/cm}^3) \times 360 \text{ cm}^2 \times 8 \text{ hr}\end{aligned}$$

The inhalation dose (in mg) is derived on the basis of the occupational exposure limit (OEL) of the substance—if the OEL is developed to prevent the occurrence of systemic effects rather than sensory/irritant effects or direct effects on the respiratory tract. Assume a continuous exposure of 8 hours, an inhalation volume of 10 cubic meters ( $\text{m}^3$ ) inhaled air in 8 hours, and a factor of 75% for retention of the airborne substance in the lungs during respiration (retention factor, or RF).

### Equation 3: Determination of Inhalation Dose

$$\begin{aligned}\text{Inhalation dose} &= \text{OEL} \times \text{Inhalation volume} \times \text{RF} \\ &= \text{OEL}(\text{mg/m}^3) \times 10 \text{ m}^3 \times 0.75\end{aligned}$$

The final step is to compare the calculated skin and inhalation doses and to present the result as a ratio of skin dose to inhalation dose (the SI ratio). This ratio quantitatively indicates (1) the significance of dermal absorption as a route of occupational exposure to the substance and (2) the contribution of dermal uptake to systemic toxicity. If a substance has an SI ratio greater than or equal to 0.1, it is considered a skin absorption hazard.

## Calculation

Table A1 summarizes the data applied in the previously described equations to determine the SI ratio for morpholine. The calculated SI ratio was 1.76. On the basis of these results, morpholine is predicted to represent a skin absorption hazard.

**Table A1. Summary of Data used to Calculate the SI Ratio for Morpholine**

Variables Used in Calculation	Units	Value
<b>Skin permeation coefficient</b>		
Permeation coefficient of stratum corneum lipid path ( $k_{psc}$ )	cm/hr	0.0003
Permeation coefficient of the protein fraction of the stratum corneum ( $k_{poi}$ )	cm/hr	$1.628 \times 10^{-5}$
Permeation coefficient of the watery epidermal layer ( $k_{aq}$ )	cm/hr	0.2679
Molecular weight ( $MW$ ) <sup>*</sup>	amu	87.1
Base-10 logarithm of its octanol–water partition coefficient ( $\text{Log } K_{ow}$ )	None	-0.86
Calculated skin permeation coefficient ( $k_p$ )	cm/hr	0.0003
<b>Skin dose</b>		
Water solubility ( $S_w$ ) <sup>*</sup>	mg/cm <sup>3</sup>	1000
Calculated skin permeation coefficient ( $k_p$ )	cm/hr	0.0003
Estimated skin surface area (palms of hand)	cm <sup>2</sup>	360
Exposure time	hr	8
Calculated skin dose	mg	921.2
<b>Inhalation Dose</b>		
Occupational exposure limit (OEL) <sup>†</sup>	mg/m <sup>3</sup>	70
Inhalation volume	m <sup>3</sup>	10
Retention factor (RF)	None	0.75
Inhalation dose	mg	525
<b>Skin dose–to–inhalation dose (SI) ratio</b>	None	1.755

<sup>\*</sup>Variables identified from SRC [ND].

<sup>†</sup>The OEL used in calculation of the SI ratio for morpholine was the NIOSH recommended exposure limit (REL) [NIOSH 2005].

## **Appendix References**

NIOSH [2005]. NIOSH pocket guide to chemical hazards. Cincinnati, OH: U.S. Department of Health and Human Services, Centers for Disease Control and Prevention, National Institute for Occupational Safety and Health, DHHS (NIOSH) Publication No. 2005-149, <http://www.cdc.gov/niosh/npg/>. Accessed: 01-28-15.

NIOSH [2009]. Current intelligence bulletin 61: a strategy for assigning new NIOSH skin notations. Cincinnati, OH: U.S. Department of Health and Human Services, Centers for Disease Control and Prevention, National Institute for Occupational Safety and Health, DHHS (NIOSH) Publication No. 2009-147, <http://www.cdc.gov/niosh/docs/2009-147/pdfs/2009-147.pdf>. Accessed: 01-28-15.

SRC [2009]. Interactive PhysProp database demo, <http://esc.syrres.com/fatepointer/webprop.asp?CAS=110918>. Accessed: 01-28-15.

DRAFT