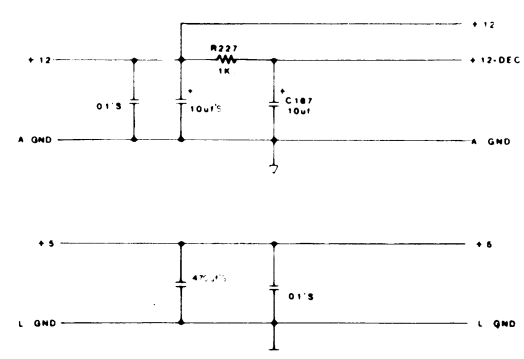


- 2 X 24 PIN RIBBON CABLE
- 1-12,3-L GND
 - 1-4,5-B +5
 - 1-7,8-NOT USED
 - 1-10-BU00
 - 1-11-BU01
 - 1-12-BU02
 - 1-13-BU03
 - 1-14-BU04
 - 1-15-BU05
 - 1-16-BU06
 - 1-17-BU07
 - 1-18-NOT USED
 - 1-19-FLIP1
 - 1-20-VRESET
 - 1-21,22,23,24-NOT USED
- 2 X 24 PIN RIBBON CABLE
- 2-1,2-A GND
 - 2-3-BU07
 - 2-4-BU08
 - 2-5-BU05
 - 2-6-BU04
 - 2-7-BU03
 - 2-8-BU02
 - 2-9-BU01
 - 2-10-BU00
 - 2-11,12-B GND
 - 2-13-WAIT
 - 2-14-BU00
 - 2-15-NOT USED
 - 2-16-BU00
 - 2-17-BU00
 - 2-18-NOT USED
 - 2-19,20,21-B +5
 - 2-22,23,24-L GND
- 72 PIN TEST CONN
- 1 - JNC
 - 2 +5
 - 3 - JNC
 - 4 +5
 - 5 +12
 - 6 - JNC
 - 7 +12
 - 8 - NOT USED
 - 9 - BU00
 - 10 - BU01
 - 11 - BU02
 - 12 - BU03
 - 13 - BU04
 - 14 - BU05
 - 15 - BU06
 - 16 - BU07
 - 17 - S00
 - 18 - S01
 - 19 - S02
 - 20 - S03
 - 21 - S04
 - 22 - S05
 - 23 - S06
 - 24 - S07
 - 25 - BU00
 - 26 - BU01
 - 27 - BU02
 - 28 - BU03
 - 29 - BU04
 - 30 - BU05
 - 31 - BU06
 - 32 - BU07
 - 33 - SA0
 - 34 - SA1
 - 35 - SA2
 - 36 - SA3
 - 37 - SA4
 - 38 - SA5
 - 39 - SA6
 - 40 - SA7
 - 41 - SA8
 - 42 - SA9
 - 43 - SA10
 - 44 - SA11
 - 45 - SA12
 - 46 - SA13
 - 47 - SA14
 - 48 - SA15
 - 49 - SW00
 - 50 - SW01
 - 51 - SW1
 - 52 - SWBACK
 - 53 - BU00
 - 54 - BU01
 - 55 - VRESET
 - 56 - TR
 - 57 - CLKCTL
 - 58 - SW0
 - 59 - SWR
 - 60 - BU00
 - 61 - BU00
 - 62 - BU00
 - 63 - BU00
 - 64 - SW SW
 - 65 - L GND
 - 66 - SWAIT
 - 67 - L GND
 - 68 - SWAIT
 - 69 - NOT USED
 - 70 - +5
 - 71 - JNC
 - 72 - +5



NOTE
 R - RESISTOR
 EPROM ROM
 2532 COMPAT. 11
 2532 COMPAT. 11

DRAWING VALID & "L" VERSION

PROJ ENG CARY MEDNICK

DISCS OF TRON

MIDWAY MFG. CO.

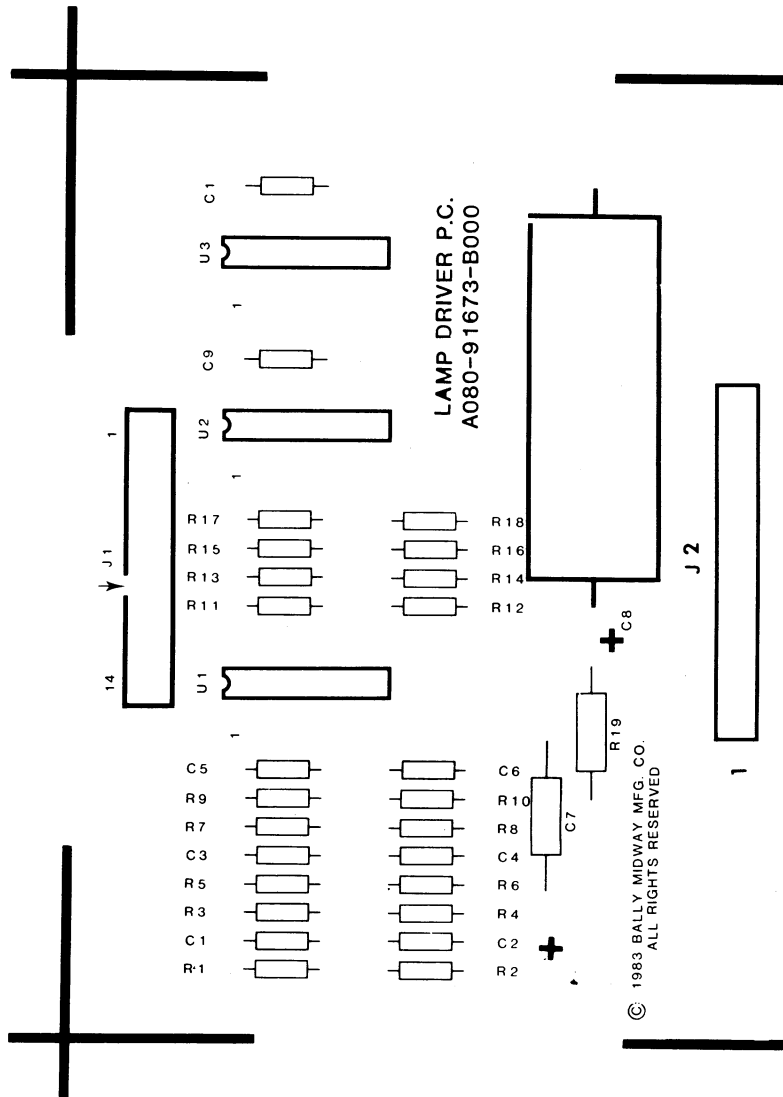
FULL SCHEMATIC SOUND I/O W/ PANNING A084-91657-A000

08/11/83

M051-00982-A035

DESIGNATION LIST

<u>DESIGNATION NO.</u>	<u>DESCRIPTION</u>
C1-C4	100 PF 50V AX CER
C5	.01 UF 50V AX CER
C6	100 PF 50V AX CER
C7	10 UF 16V AX ELECT
C8	4700 UF 25V AX ELECT
C9, C10	.01 UF 50V AX CER
R1	10K OHM 1/4W 5%
R2	100K OHM 1/4W 5%
R3	10K OHM 1/4W 5%
R4	100K OHM 1/4W 5%
R5	10K OHM 1/4W 5%
R6	100K OHM 1/4W 5%
R7	10K OHM 1/4W 5%
R8	100K OHM 1/4W 5%
R9	10K OHM 1/4W 5%
R10	100K OHM 1/4W 5%
R11-R18	100K OHM 1/4W 5%
R19	2.2 OHM 1W 5%
U1	4099
U2, U3	2068B
J1	.025 SQ PIN
J2	.045 SQ PIN
PCMH1-PCMH4	SPACER #8
P.C. BOARD	A080-91673-A000



PROJECT ENG: J. BOYDSTON	
COORDINATOR	
ALL DIMENSIONS UNLESS OTHERWISE SPECIFIED ARE IN INCHES DECIMALS ARE TO 0.005 FRACTIONS ARE TO 1/32 HOLE DIA. IS TO 0.002 HOLE DIA. IS TO 0.002	DRN <i>ted</i> CKD. DATE 10/28/3

CROSS REFERENCE LIST

<u>DESCRIPTION</u>	<u>QTY</u>	<u>DESIGNATION NO.</u>	<u>PART NOS.</u>
100 PF 50V AX CER	5	C1-C4,C6	0639-00800-0003
.01 UF 50V AX CER	3	C5,C9,C10	0628-00800-0100
10 MF 16V AX ELECT	1	C7	0628-00800-0300
4700 UF 25V AX ELECT	1	C8	0383-00800-0006
2.2 OHM 1W 5%	1	R19	100E-00007-0003
10K OHM 1/4W 5%	5	R1,R3,R5,R7,R9	100E-00005-0088
100K OHM 1/4W 5%	13	R2,R4,R6,R8,R10 R11-R18	100E-00005-0115
2068B	2	U2,U3	0307-00803-0003
4099	1	U1	0307-00803-0004
.025 SQ PIN	13	J1	0017-00033-0479
.045 SQ PIN	10	J2	0017-00033-0480
SPACER #8	4	PCMH1-PCMH4	0017-00042-0320
P.C. BOARD	1		A080-91673-A000

REVISIONS	

ON		USED ON		<i>Balt.</i> / MIDRAY MFG. CO. FRANKLIN PK ILL.
HEAT TREAT	SCALE	FULL	NO REQ'D I PER	
MAT'L	ASSEMBLY DWG			PART NO.
FINISH	LAMP DRIVER P.C.			M051 - 00114 - B094
8/33	A080-91673-B000			