

GALAGA

SOLDER/F

PARTS/F

SMALL BOARD

DIP SW A

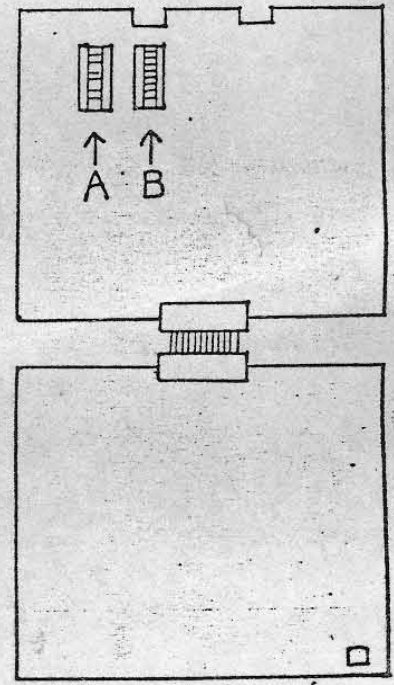
GND	A 1	GND
GND	B 2	GND
+ 5	C 3	+ 5
+ 5	D 4	+ 5
+ 12	E 5	+ 12
SOUND	F 6	
	G 7	
	H 8	
	I 9	
	J 10	
	K 11	
	L 12	COIN SW
2P SELECT	M 13	1P SELECT
2P FIRE	N 14	1P FIRE
2P LEFT	O 15	1P LEFT
2P RIGHT	P 16	1P RIGHT
	Q 17	
	R 18	
+ 5	S 19	+ 5
+ 5	T 20	+ 5
GND	U 21	GND
GND	V 22	GND

GND	1
SYNC	2
B	3
G	4
R	5
0	0
GND	+ 5

	1	2	3	4	5	6	7	8
Free Play	ON	ON	ON					
4Coin 1Credit	ON	ON	OFF					
3 " 1 "	ON	OFF	ON					
2 " 1 "	ON	OFF	OFF					
2 " 3 "	OFF	ON	ON					
1 " 3 "	OFF	ON	OFF					
1 " 2 "	OFF	OFF	ON					
1 " 1 "	OFF	OFF	OFF					
Bonus Points								
Number of Fighters								
2, 3, 4 FIGHTERS			5 FIGHTERS					
1st	2nd		1st	2nd	ON ON OFF			
20,000	40,000		30,000	100,000	ON OFF ON			
20,000	70,000		30,000	120,000	ON OFF OFF			
20,000	80,000		30,000	160,000	OFF ON ON			
30,000	100,000		30,000	100,000	OFF ON OFF			
30,000	120,000		30,000	120,000	OFF OFF ON			
20,000	60,000		30,000	160,000	OFF OFF OFF			
30,000	80,000		30,000	100,000	ON ON ON			
Number of Fighters								
2 Planes					ON ON			
3 "					ON OFF			
4 "					OFF ON			
5 "					OFF OFF			

DIP SW B

		1	2	3	4	5	6	7	8
SOUND					ON OFF				
PICTURE						ON OFF			
STAGE							ON OFF		
		OFF	OFF	OFF					OFF



M

Bestückungsseite

Lötseite

	1	TV Synchron
	2	TV GRÜN
	3	TV BLAU
TV ROT	4	LINKS
TASTER 1	5	RECHTS
2 P START	6	1 P START
	7	
GND	8	
	9	Münze EIN
+ 5V	10	
+ 5V	11	
	12	
	13	+ 12V
Lautsprecher (+)	14	Lautsprecher (-)
	15	
GND	16	
GND	17	
GND	18	
	19	
	20	
	21	
	22	
	23	
	24	
	25	
	26	
	27	
	28	

Galaga

DIP SWITCH B

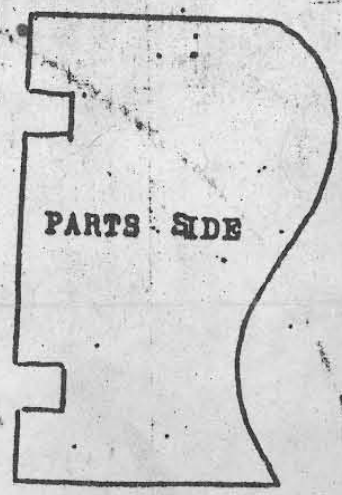
DIP SW B	1	2	3	4	5	6	7	8
Attract Sound	ON		ON					
	OFF		OFF					
Scene	STOP			ON				
	NORMAL			OFF				
Slection of Stage	STAGE PROCESS					ON		
	NORMAL					OFF		
Rank	ON	ON	A					
	ON	OFF	B					
	OFF	ON	C					
	OFF	OFF	D					
Coin Switch A	1 COIN 1PLAY				ON	ON		
	1 COIN 2PLAYS				ON	OFF		
	2 COINS 1PLAY				OFF	ON		
	2 COINS 3PLAYS				OFF	OFF		

center

Solder Side Parts Side *open* TV (Small Printed Circuit Board)

✓ GND	[A 1) GND
		B 2	
+5	[C 3]+5
		D 4	
+12	[E 5]+12
✓ Sound		F 6	✓ SYNC
		H 7	✓ B
		J 8	✓ G
		K 9	✓ R
		L 10	
		M 11	
		N 12	Coin SW A ✓
		P 13	1P Select ✓
		R 14	1P Shoot ✓
		S 15	1P Left ✓
		T 16	1P Right ✓
		U 17	
		V 18	
+5	[W 19]+5
		X 20	
GND	[Y 21) GND
		Z 22	

GND	5
SYNO	4
B	3
Q	2
R	1



- ✓ Coin SW B
- ✓ 2P Select
- ✓ 2P Shoot
- ✓ 2P Left
- ✓ 2P Right

In case of Cocktail Type, connect the connector U to GND.

Galape

No. 1.

CONNECTOR

WIRERING

Parts Side		Solder Side
GND	1	GND
SPEAKER	2	SPEAKER
	3	COINCOUNTER 1
	4	
+12V	5	+12V
+5V	6	+5V
	7	
	8	
COIN 1	9	COIN 2
1 Play Select	10	2 Play Select
1 " Trriger	11	2 " Trriger
1 " Left	12	2 " Left
	13	
1 Play Right	14	2 Play Right
	15	
	16	
	17	
TV Green	18	TV Blue
TV Red	19	TV SYNC
	20	
COINCOUNTER 2	21	Table Use (GND)
GND	22	GND

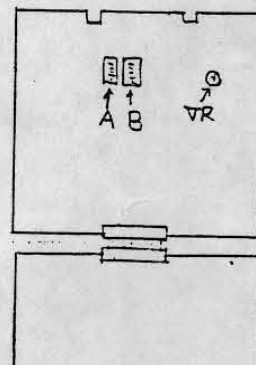
DIP · SW

SW A

1	2	3	4	5	6	7	8	
OFF	OFF	OFF						1 COIN / CREDIT
		ON						1 * 2 "
		ON						1 * 3 "
		ON ON						2 COINS "
	ON							2 " / "
	ON	ON						3 " / "
	ON	ON						4 " / "
	ON	ON ON						FREE PLAY (SERVIS SW)
			ON	ON				1st BONUS 20000 pts, 2nd BONUS 60000 pts.
			ON ON					" 20000 " 60000 , and EVERY 60000 pts
			ON ON					" 20000 " 70000 " 70000
			ON					" 20000 " 80000 " 80000
			OFF OFF OFF					" 30000 " 80000
			ON ON					" 30000 " 100000 , and EVERY 100000 pts
			ON					" 30000 " 120000 " 120000 "
			ON ON ON					BONUS NOTHING
			ON ON					1st BONUS 30000 pts, 2nd BONUS 100000 pts.
			ON					" " " 120000 "
			ON					" " " 150000 " and EVERY 100000 pts
			ON ON					" " " 100000 " 120000 "
			ON ON					" " " 120000 " 120000 "
			ON					" " " 150000 " 150000 "
			OFF OFF OFF					" " " "
			ON ON ON					BONUS NOTHING
				OFF OFF				5 SHIPS
				ON ON				4 "
				ON ON				3 "
				ON ON				2 "

SW B

1	2	3	4	5	6	7	8	
OFF	OFF	OFF	OFF	OFF	OFF	OFF	OFF	GAME RANK A
ON	ON							" B
		ON						" C
		ON						" D
			ON					
			OFF					



GALAGA II

1	2	3	4	5
GND	SYN C	BLUE	GREEN	RED

GND + + + + +
 DND 5V 5V 12V
~~EN~~
 SYN C
 GREEN
 BLUE
 COIN
 START
 AP FIRE
 AP LEFT
 AP RIGHT
 N C
 N C 5V 5V
 GND
 GND

Bestückungsreihe

1	2	3	4	5	6	7	8	9	10	11	12	13	14	15	16	17	18	19	20	21	22
A	B	C	D	E	F	H	J	K	L	M	N	P	R	S	T	U	V	W	X	Y	Z

GND + + + + +
 DND 5V 5V 12V
 SPEAKER
 EN
 SYN C
 GREEN
 BLUE
 COIN
 START
 AP FIRE
 AP LEFT
 AP RIGHT
 N C
 N C 5V 5V
 GND
 GND

