

# FLEET Management

An integrated, vendor-agnostic Fleet Management solution for modern data management

## Quick Summary

**Fleet Management simplifies telemetry data collection by automating agent deployment and configuration, providing insights into the real-time health and performance of your sprawling agent infrastructure. With centralized control, you can run a more stable infrastructure, and eliminate config drift.**

## Transforming Telemetry with Fleet Data Management

**Fleet Data Management** upgrades traditional telemetry from a static system to a dynamic, adaptable solution tailored to your specific operational requirements. It offers a sophisticated approach to data collection, focusing on efficiency and flexibility.

Challenges with static data collection:

- **Inefficiency**

Static data collection methods are outdated in today's fast-paced digital environment. They lack the agility required to respond to rapid changes, leading to delays and missed opportunities for optimization.

- **High Costs**

Collecting data indiscriminately can lead to excessive and unnecessary expenses. Without a targeted approach, resources are wasted on gathering and storing irrelevant data.

- **Rigid Configuration**

## Key Benefits

### Diverse Agent Support

A wide range of agents, such as OpenTelemetry Collector, Fluent-bit, Telegraf, and others, to avoid vendor lock-in and fully support OpenTelemetry standards.

### Hybrid Agent Management

The BYOA (Bring Your Own Agent) strategy ensures smooth integration across various agent types.

### Centralized Control

Streamline the setup, updating, and maintenance of telemetry agents for top-notch security and efficiency.

### Eliminate Configuration Drift

Deploy configurations consistently with tools to correct any discrepancies, boosting system dependability and performance.

Traditional telemetry systems often lack the flexibility needed to adapt to different operational contexts. This rigidity can lead to configuration errors and reduced system performance.

- **Vendor Lock-In**

Relying on specific telemetry solutions can limit your options and hinder your ability to switch to more efficient or cost-effective alternatives. This dependency can stifle innovation and adaptability.

## Integrations

Apica's Fleet Data Management approach supports a broad spectrum of open-source agents, such as OpenTelemetry, Telegraf, Logstash, and Fluent-bit, with a unified interface for easy agent configuration management, and adapts swiftly to changing needs without requiring deep technical knowledge.

## The Fleet Data Management Process

### Deploying Agent Managers

Automates the application of new configurations, keeping agents up to date.

### Creating Custom Configs

Customize data collection strategies for all supported agents, enhancing effectiveness and precision.

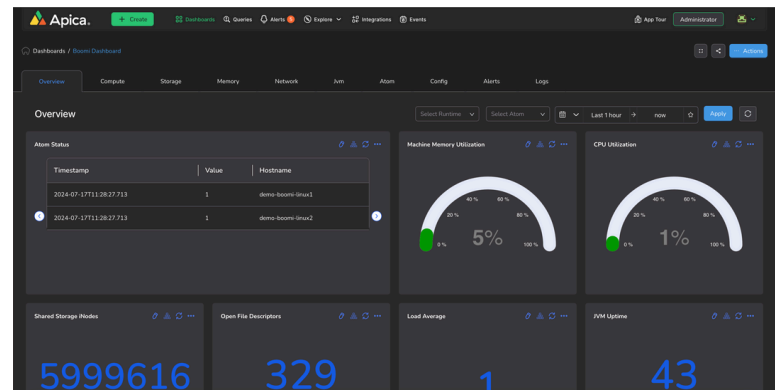
## Streamline your Telemetry Pipeline with Fleet Management

### Dynamic Scalability

Automatically scales data collection efforts up or down based on real-time environmental factors, ensuring optimal use of resources. This means that during peak usage times, the system can increase data collection to capture all necessary telemetry while scaling back during quieter periods to save on resources and costs.

## Effortless Configuration Management

Provides an intuitive interface for managing agent configurations, reducing the likelihood of errors and enhancing overall system adaptability. This simplification allows IT teams to quickly adjust settings as needed without extensive training or risk of misconfiguration, leading to more reliable performance.



## Lifecycle Integration

Enables centralized control over agent configurations and software versions, making it easy to roll out updates, patches, or new features. This integration streamlines the maintenance process, ensuring all agents are up-to-date and operating efficiently without the need for manual intervention on each agent.

Take control of your telemetry with point-and-click ease, and redefine your observability strategy with Fleet Data Management today.

## Product Features

- Management of large numbers of telemetry collection agents.
- Deployment and installation of agents and agent plug-in packages.
- Agent configuration repository.
- Rules based assignment of agent configurations.
- Agent configuration templates.
- Integration with external alerting and monitoring systems.
- REST API's, CLI for automation

## Architecture

- Run on any cloud environment, public or private.
- REST API to access any Fleet functions.
- Manage multiple agents at the same time in a single server.
- OpenTelemetry Open Agent Management Protocol (OpAMP) compatible.

## Administration

- Consumer-grade user-interface.
- Remote agent control: Restart, Start, Stop, Delete.
- Centralized Agent inventory
- Installation and deployment of agents on Linux and Windows
- Agent health check.
- Configuration management and assignment of configurations to agents.
- Audit trail of config changes.

## Security

- Zero-Trust architecture means no host passwords are needed.
- Communication between agents and the Fleet system is done via TLS encrypted connections.
- Agent access can be fully controlled and managed from within Fleet
- Role-based access control for Fleet functions.

## Data Types

- Logs, Metrics and Traces
- Agents
- Configurations
- Managers
- Packages
- Rules
- External Alerts

## Integrations

- OpenTelemetry Collector
- Fluent-bit
- Telegraf
- Logstash
- Vector
- Filebeats
- Custom agents
- Other popular open-source agents

## Working with Data

- On-demand update configurations for telemetry agents from a single UI
- Annotate, tag log, metric, and trace data on changing real-world conditions.
- Change sampling frequency or detail level of data collected by applying different configurations
- Control volume of data being collected and transmitted.
- Apply consistent policy to all monitoring data.

## Open-Source Support

- Built-in support for OpenTelemetry collector, Fluent-bit, Telegraf, and other open-source agents.
- Extensible and compatible with a wide range of observability platforms, due to support for open-source protocols and technologies.

## OpenTelemetry Support

- Both core and contrib OpenTelemetry collector distributions are supported.
- Support for custom collector builds.
- Open Agent Management Protocol (OpAMP) is a core technology.
- Compatible with future development and expansion of OpAMP.
- Pre-built configs for OpenTelemetry collector that can provide out-of-the-box host metrics with pre-built dashboards.



**CLOUD NATIVE  
COMPUTING FOUNDATION**



**Contact us** today to schedule a demo. Or reach out to **[sales@apica.io](mailto:sales@apica.io)**