



Pipeline Transportation of Ammonia  
Helping to Bridge the Gap to a Carbon Free Future  
November 9, 2021

# Background on NuStar

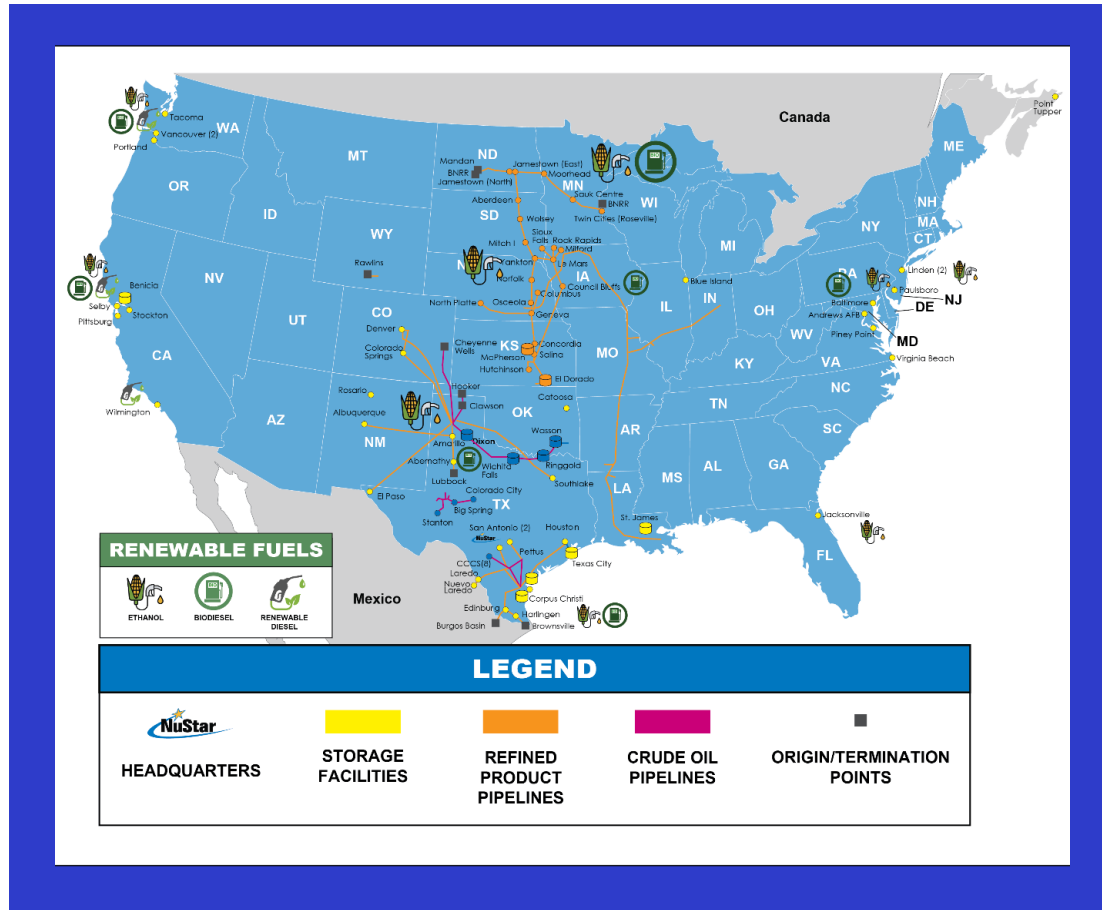
NuStar Transports and Stores Crude Oil, Petroleum Products, Ammonia and Renewable Fuels in Markets Across North America

## Pipelines:

10,000  
pipeline miles

645 MM  
barrels transported  
in 2020

1.8  
MMbpd  
average daily  
volume in 2020



## Terminals

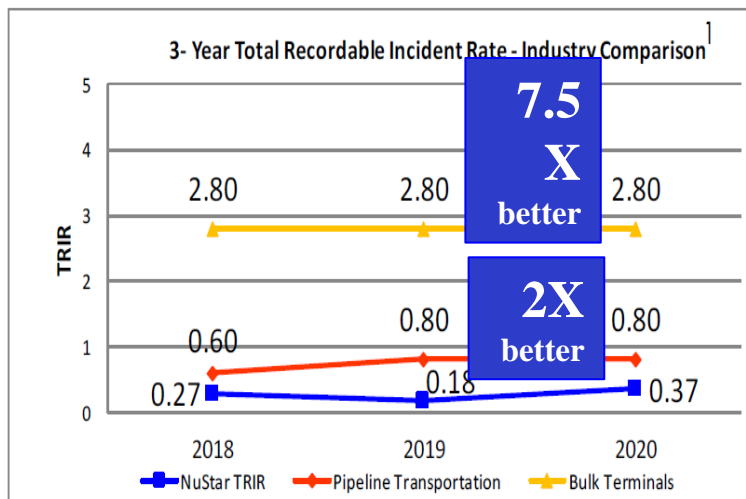
73  
terminal facilities

72 MM  
barrels of storage  
capacity

172 MM  
barrels  
throughput in  
2020

# Our #1 Priority: Health and Safety of our Workforce and Our Communities

- Excellent health and safety record
  - ✓ Over **7.5 times better** than the Bureau of Labor Statistics (BLS) comparison data for the **Bulk Terminals** Industry
  - ✓ And **2 times better** than the BLS data for the **Pipeline Transportation** Industry
- NuStar has received the International Liquids Terminals Association’s (ILTA) Safety Excellence Award **10 times**, which is awarded based in part on OSHA safety reports
- We participate in the OSHA Voluntary Protection Program (VPP), which promotes effective worksite safety and health
  - ✓ **85%** of our eligible U.S. terminals are VPP-certified
- We work every day of every year to prevent any product releases



1 – Industry averages derived from 2018-2019 Bureau of Labor Statistics (BLS) Data. 2019 averages carried forward to 2020 for illustration purposes.

**ILTA 10-time recipient**

**85%** of eligible facilities

**811**

**VPP** Voluntary Protection Programs



# NuStar's Support of Each Other and Our Communities

## We Invest in Our Communities: Partnering With Local Organizations and Helping to Build Safe, Vibrant Communities

- Our employees take great pride in giving back and building a brighter future for our neighbors by contributing time, talent, money and other resources to hundreds of community initiatives each year
- NuStar maintains local volunteer councils in each community in which we operate to contribute to the charitable and civic causes unique to that local community
- When disasters strike our community, NuStar is there to help employees and their families recover

Over 80  
board positions  
held by NuStar  
employees on  
non-profit boards



99.9%  
United Way  
participation  
in 2020



# NuStar's Ammonia Pipeline System



- The Ammonia Pipeline System is a common carrier pipeline system
- Approximately 2,000 miles long, completed in 1971, consisting of 4", 6", 8" and 10" pipe
- Transports Anhydrous Ammonia for third parties, in liquid form, from Louisiana and other various points to the Corn Belt region
- Serves both agricultural and industrial customers
- Transports approximately 1.5 million tons of anhydrous ammonia per year
- The construction and operation is regulated by DOT - PHMSA (Pipeline Hazardous Materials Safety Administration)

# Pipeline Transportation Advantages

## Pipeline Transportation

- Safe
- Cost Effective
- Efficient
- Low Carbon Footprint



## Fungible

- Source Independent
  - Green
  - Blue
  - Grey



## Ammonia Acceptance Specifications

Temperature:	Not less than 35 degrees Fahrenheit, nor more than 85 degrees Fahrenheit
Ammonia (NH <sub>3</sub> ) Content:	99.5 % minimum by weight
Water Content:	0.2 % minimum by weight
Oil Content by Weight:	5 parts per million maximum
Inerts:	0.5cc per gram maximum

# Liquid vs. Gas Pipeline Infrastructure



- Natural Gas Transmission Pipeline sizes range from 16 to 40 inches in diameter and are equipped with compressors rather than pumps
- Liquids pipelines more typically range from 6 to 16 inches in diameter and are usually equipped with centrifugal pumps

Pipe Size	Capacity (Barrels/Day)	Capacity (Tons/Day)	Linefill/mile (BBLs)	Linefill/mile (Tons)
6 inch	24,000	2,600	184	20
10 inch	60,000	6,600	512	56
16 inch	240,000	26,300	1,313	144



24 inch



10 Inch

- NuStar owns approximately 75,000 tons of linefill

# Repurpose vs. New Build

- **Idle or Abandoned Liquid Pipelines**

- ROW (might be specific)
- Integrity (Inline Inspection/Hydrotest)
- Replacement of Soft Goods
- Cleaning/Drying
- Lateral extensions to Origins and Delivery points
- Cost range can be wide

- **New Build**

- ROW Acquisition
- Construction
- Commissioning
- \$1-3 million/mile





---

*Thank You!*

Questions???