

 abba Madrid hotel  
\*\*\*\*\*

Madrid  
*is vibrant, cultural  
and succulent*





# abba Madrid hotel

---

01 Location

---

02 Hotel

---

03 Rooms

---

04 Services

---

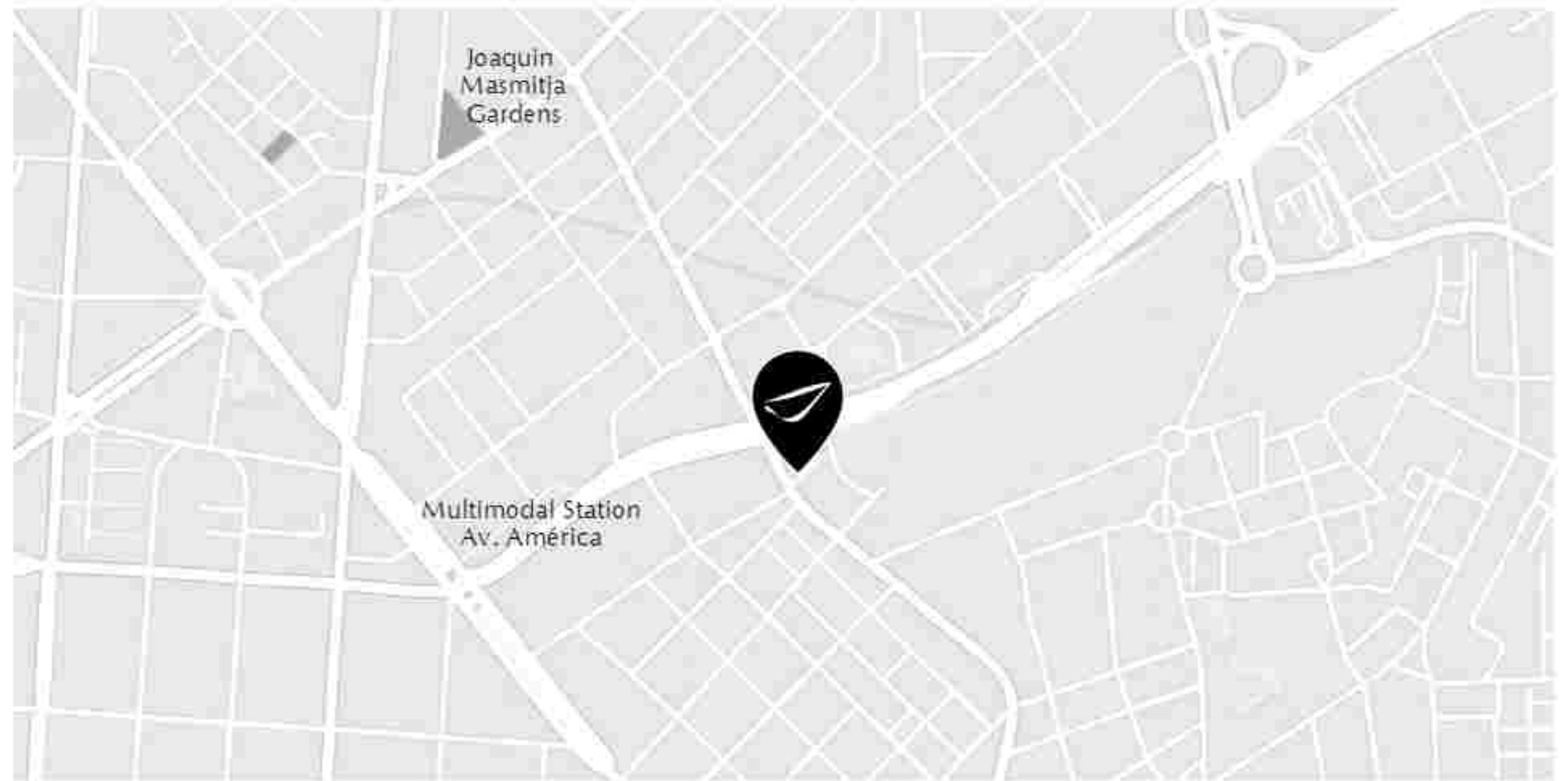




01

# Location

In the iconic Salamanca neighborhood



abba Madrid hotel has a privileged location. In the emblematic district of Salamanca in Madrid, at the same time is very well-connected with the Adolfo Suárez Madrid Barajas airport, the IFEMA Fairgrounds, the National Music Auditorium and the Wizink Center, among other attractions.

Its location in the business center of the Spanish capital and in one of the areas with the greatest business activity, makes abba Madrid hotel a great choice for business trips. In the same way, having this enviable location, it is also the ideal accommodation for those who want to enjoy Madrid and its wonderful leisure and cultural offer.

Thanks to its strategic location, you will be able to access both the airport and the most emblematic points of the city in a comfortable and simple way.

The capital of the country is one of the most visited cities in Spain. It offers a multitude of tourist options and activities for all interests: culture, heritage, gastronomy, wine tourism, nature, outdoor activities, architecture, shopping, leisure, etc. Without a doubt, Madrid is always the perfect choice for a complete getaway.



02

# Hotel

The Hotel is located in a fully glazed building that allows natural light at all times, making it a very bright hotel with natural light.





03

# Rooms

The hotel has a total of 205 rooms of different types. All of them are cared for down to the smallest detail, decorated in a modern style and with quality finishes. Comfort and rest are guaranteed. All rooms are exterior with natural light, warm colors and marble bathrooms.

## TPOLOGY

---

abba

---

---

abba Marriage

---

---

abba Premium

---

---

Junior Suite

---

---

Suite

---

---

abba Family 3

---

---

abba Family 4

---



# abba

## Capacity for 1-2 people

All abba rooms are designed in a modern and up-to-date style, offering everything necessary to ensure the comfort and rest of our guests, as well as all the facilities to work on business trips and enjoy the days of leisure.

They have a minibar, tea service, safe, fully equipped bathroom with amenities, hair dryer, magnifying mirror, and the best WIFI connection to cover all work needs.



1/2 people



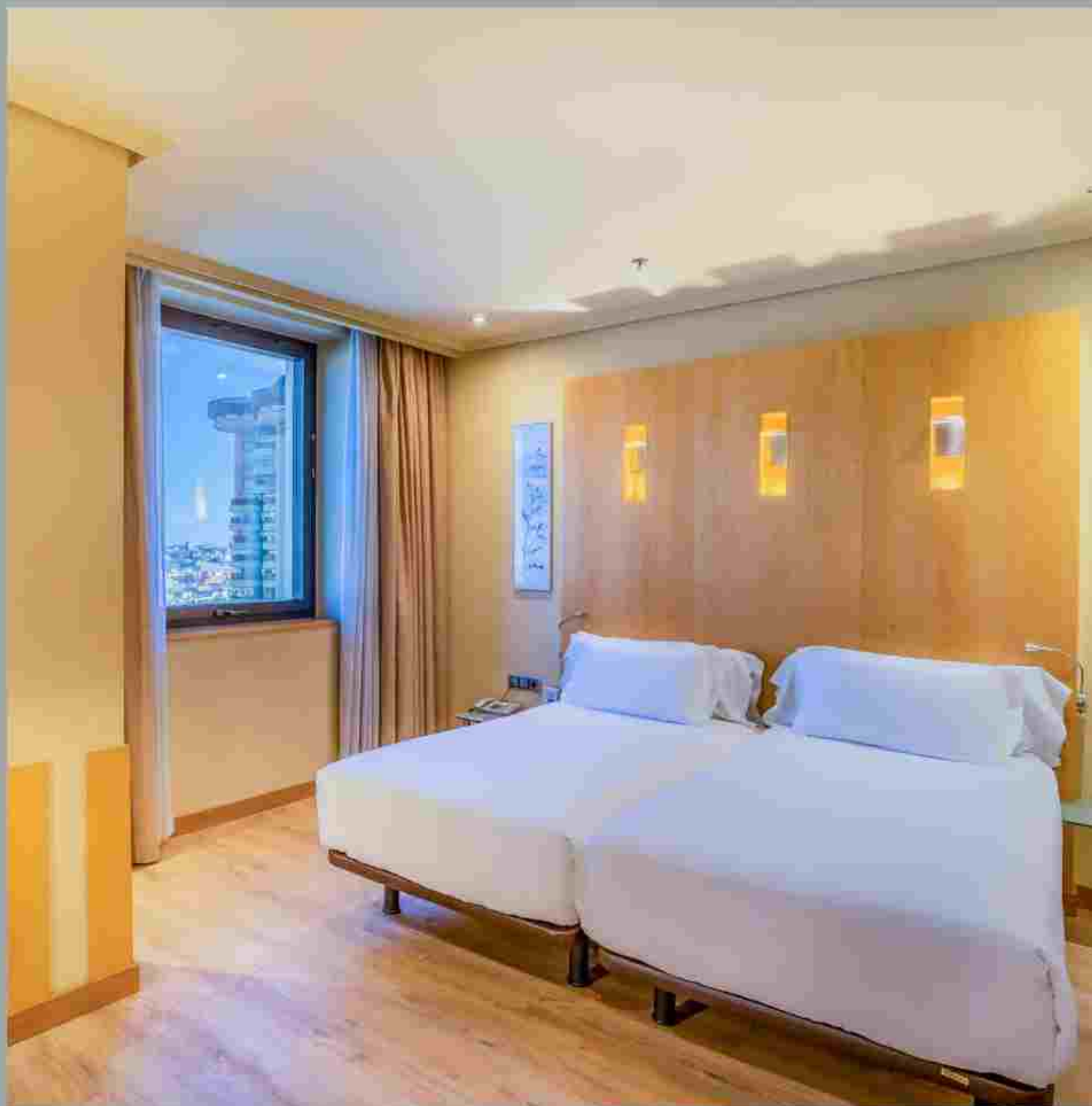
24 m<sup>2</sup>



### Bedroom

Two single beds of 1.05 m x 2 m.  
Extra: Possibility of adding a cot at no additional cost, upon request and availability of the hotel.

---





# abba Marriage

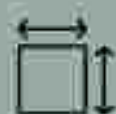
## Capacity for 1-2 people

All abba rooms are designed in a modern and up-to-date style, offering everything necessary to ensure the comfort and rest of our guests, as well as all the facilities to work on their business trips and enjoy the days of leisure.

Equipped with minibar, tea service, safe, fully equipped bathroom with amenities, hair dryer, magnifying mirror, and the best WIFI connection to cover all work needs.



1/2 people



24 m<sup>2</sup>



### Bedroom

1.50 m x 2 m or 1.80 m x 2 m bed.  
Extra: Possibility of adding a cot at no additional cost, upon request and availability of the hotel.

---





# abba Premium

## Capacity for 1-2 people

abba Premium rooms are designed to offer a distinctive experience to the most demanding guest. These are larger rooms that have an outdoor table with two armchairs, offer a modern style and cover all the needs to enjoy a Premium experience, both for stays aimed at business trips and leisure.

They have a minibar, tea service, safe, fully equipped bathroom with amenities, bathrobe and slippers, hair dryer, magnifying mirror, and the best WIFI connection to cover all work needs.



1/2 people

---



33 m<sup>2</sup>

---

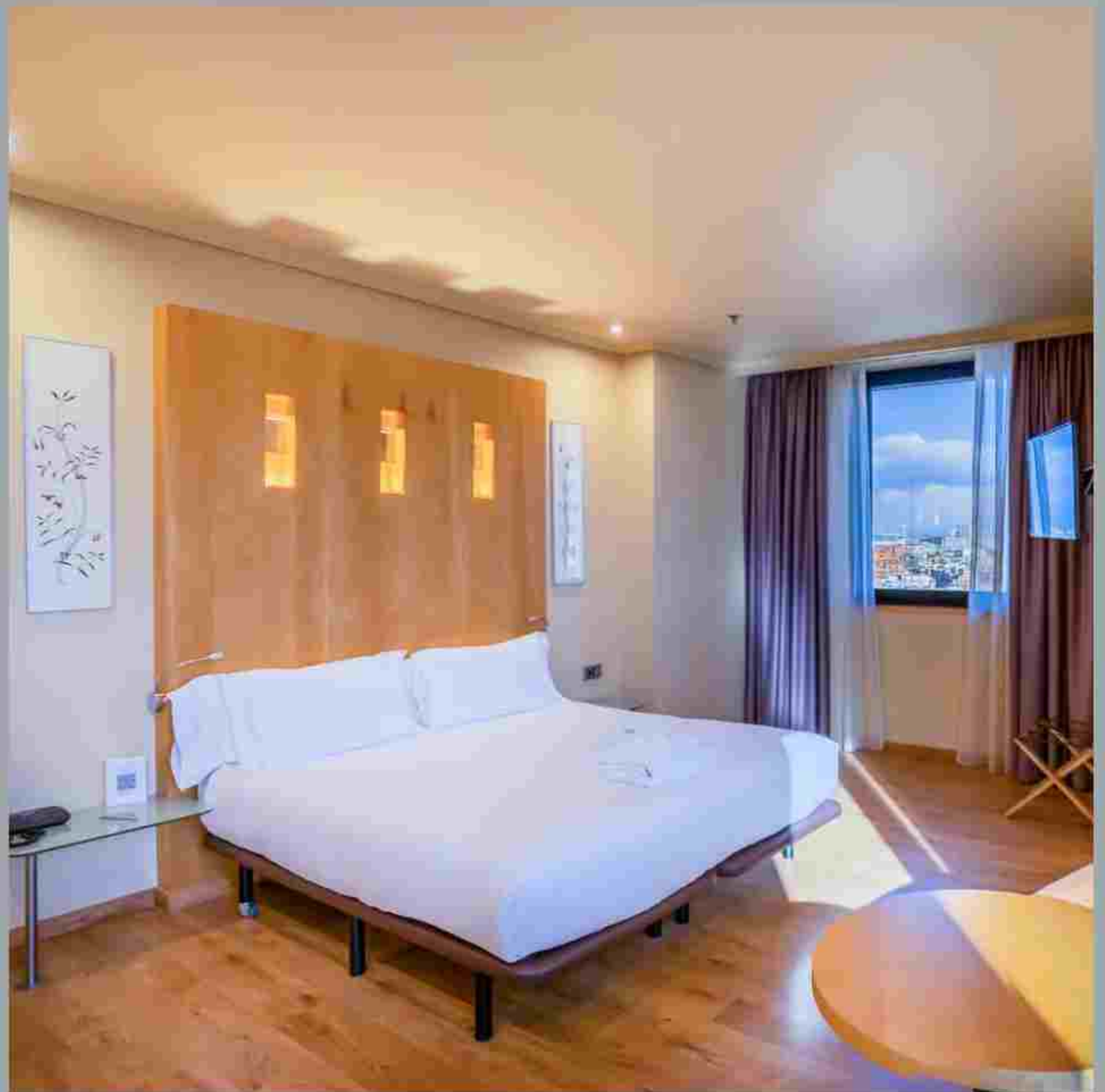


### Bedroom

One 1.8 m x 2 m bed or two 1.05 m x 2 m single beds.

Extra: Possibility of adding a cot at no extra cost, upon request and hotel availability of the hotel.

---





# Junior Suite

## Capacity for 1-2 people

Junior Suite rooms have a terrace and spectacular views of Madrid. They are designed to offer a differentiating experience to the most demanding guest. These are larger rooms that offer a contemporary style and cover all the necessities to enjoy a Premium experience, both for stays aimed at business and leisure trips.

They have a minibar, tea service with infusions, Nespresso, safe, fully equipped bathroom with special amenities, hydromassage bathtub, bathrobe and slippers, hairdryer, magnifying mirror, and the best WIFI connection to cover all your work needs.



1/2 people



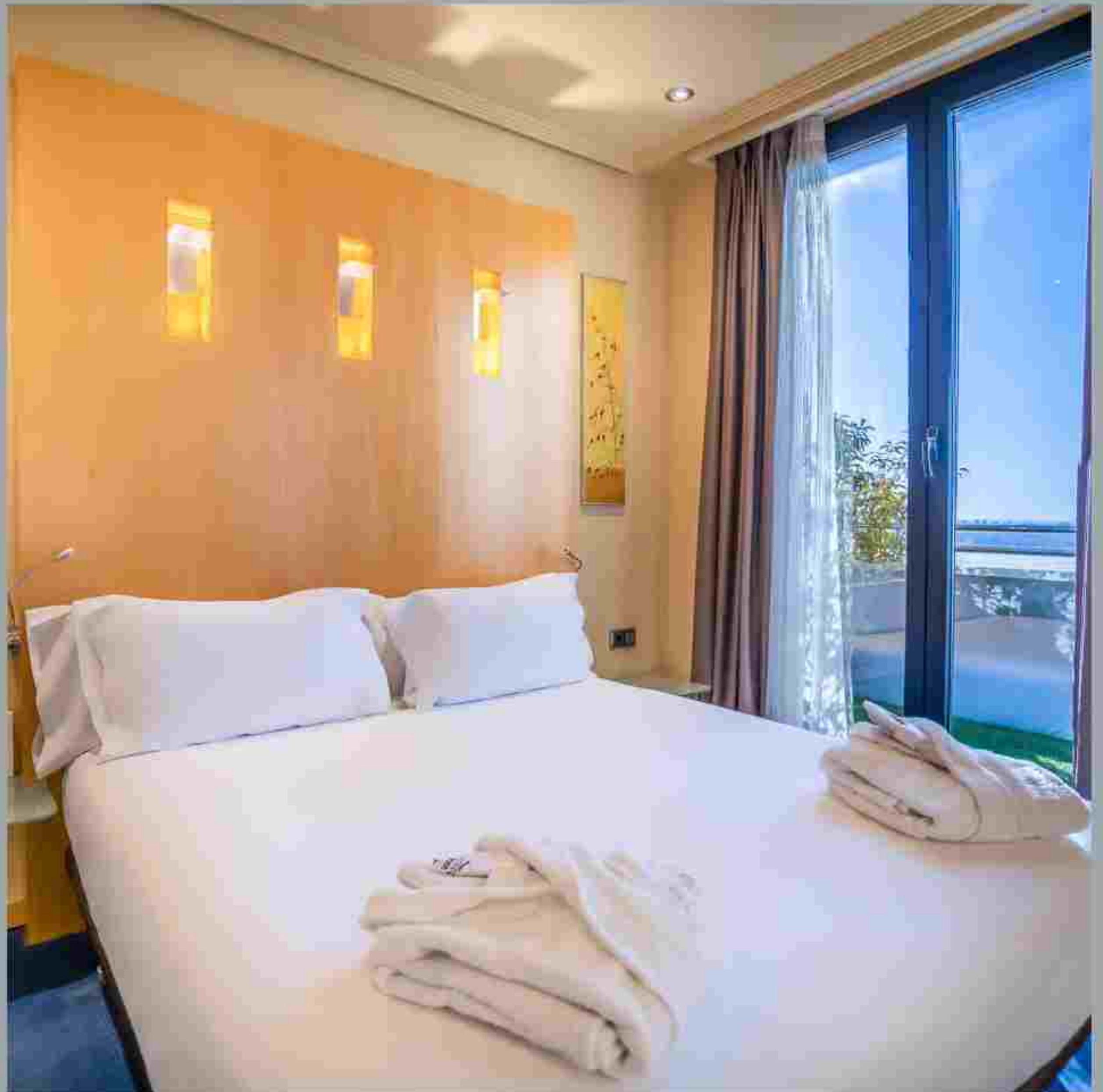
46 - 51 m<sup>2</sup>



### Bedroom

A double bed of 1.8 m x 2 m  
Extra: Possibility of adding a cot at no additional cost, upon request and availability of the hotel.

---





# Suite

## Capacity for 1-2 people

Suite rooms have a terrace and spectacular views of Madrid. Designed to offer a differentiating experience to the most demanding guest. These are larger rooms that have a separate living room and bedroom, offer a modern style and cover all the needs to enjoy a Premium experience, both for stays aimed at business trips and leisure.

With minibar, tea service with infusions, Nespresso, safe, fully equipped bathroom with special amenities, hydromassage bathtub, bathrobe and slippers, hairdryer, magnifying mirror, and the best WIFI connection to cover all your work needs.



1/2 people

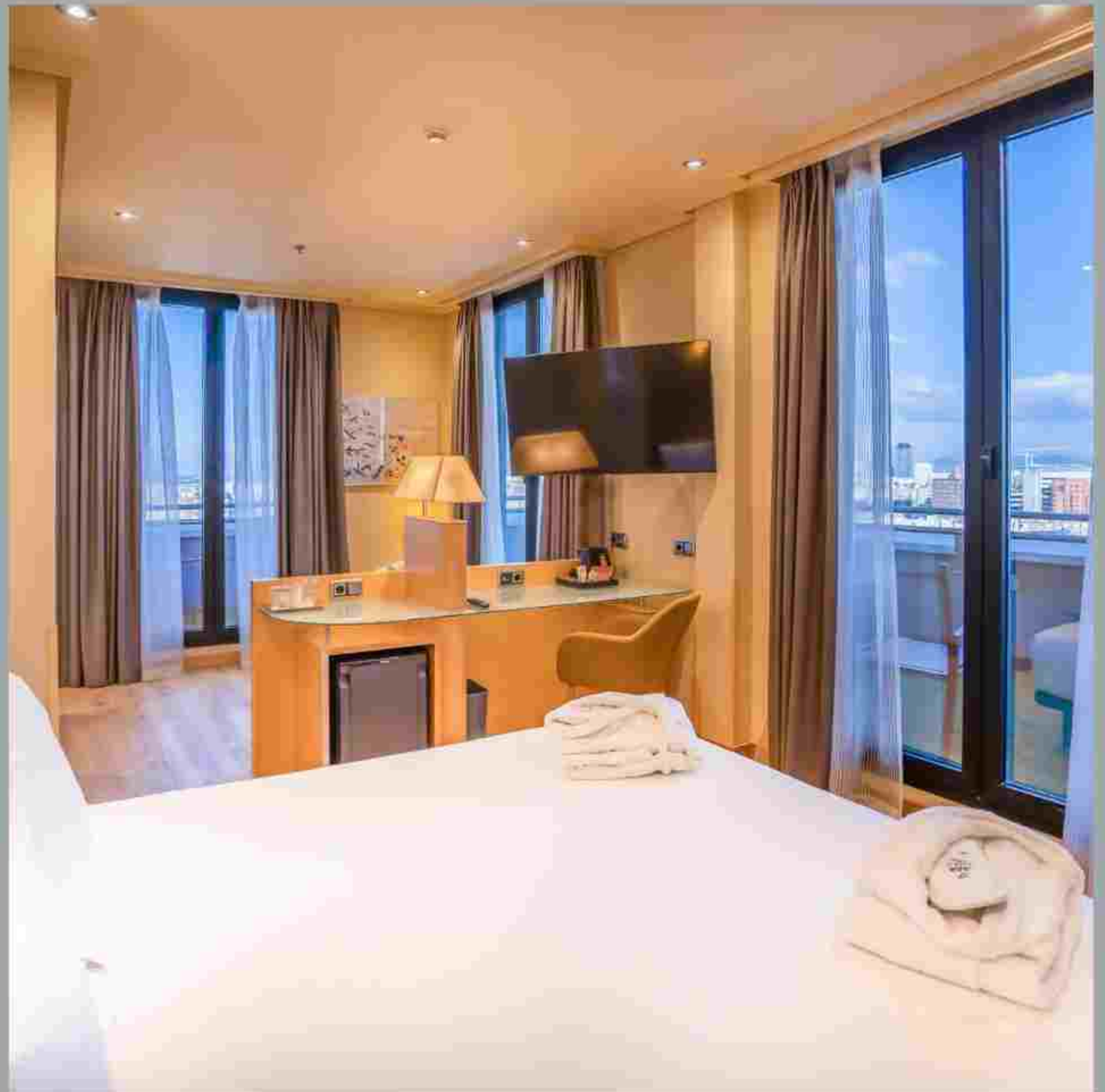


46 - 51 m<sup>2</sup>



### Bedroom

A double bed of 1.8 m x 2 m.





# abba Family 3

## Capacity for 3 people

abba Family 3 rooms are designed to offer maximum comfort and all the details to families during their stay at our hotel. These are larger rooms that have an outdoor table with two armchairs. They have a minibar, tea service, safe, fully equipped bathroom with amenities, hair dryer, magnifying mirror, and the best WIFI connection to cover all work needs.



3 people



33 m<sup>2</sup>



### Bedroom

Two beds of 1.05 m x 2 m + extra bed or 1.80 m x 2 m + extra bed.

Extra: Possibility of adding a cot at no additional cost, upon request and availability of the hotel.





# abba Family 4

## *Capacity for 4 people*

abba Family 4 rooms are designed to offer maximum comfort and all the details to families during their stay at our hotel. They are 2 independent rooms joined by a door, granting the independence of 2 bedrooms (with their own bathroom each) but the tranquility of being connected by a private door.

They have a minibar, tea service, safe, fully equipped bathroom with amenities, hair dryer, magnifying mirror, and the best WIFI connection to cover all work needs.



4 people



48 m<sup>2</sup>



### **Bedroom**

Two beds of 1.05 m x 2 m + two extra beds or 1 bed 1.80 m x 2 m.

Extra: Possibility of adding a cot at no additional cost, upon request and availability of the hotel.

---





# Services

At abba Madrid hotel we take care of our guests and offer them the best services and facilities so that they enjoy a stay that exceeds their expectations, full of comfort and personalized attention.



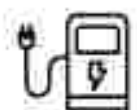
**Reception open 24 hours**  
With multilingual staff



**Bar**  
With a great offer of cocktails and drinks, as well as sweet and salty snacks



**Breakfast buffet**  
Cold and hot. Sweet and salty. Offers options for gluten and lactose intolerances.



**Charging point for electric car**



**Gym**  
Open all year, ideal to disconnect while you get a fit body and mind



**Parking**  
Subject to availability



**Free Wi-Fi connection**  
Browse without limits



**For early birds**  
Our self-service coffee and tea service is available free of charge at the hotel lobby.





## Event Rooms

*abba Madrid hotel has rooms with the perfect space for any event with a capacity of up to 100 people.*

We have all kinds of services from projection screens to flip charts and set-ups. In addition, our team of professionals will personalize your event and advise you in each situation.

We are specialists in corporate events, celebrations and communions and baptisms.





## abba Mía Restaurant

*abba Madrid hotel offers,  
inside, a spectacular restau-  
rant with its own recipes.*

Specialized in Mediterranean cuisine, you can enjoy surprisingly imaginative cuisine and varied flavors. Offer a daily menu.







Metropolis Building





Fountain of Cybele





**abba Madrid hotel**

Avenida de América, 32  
28028 Madrid

**T** (+34) 912 12 50 00

**W** [www.abbahoteles.com](http://www.abbahoteles.com)

**E** [reservas-madrid@abbahoteles.com](mailto:reservas-madrid@abbahoteles.com)

*See you soon  
at abba*

**June 2023**