

Get better at Math.
Get better at
everything.



Come experience the Cuemath methodology and ensure your child stays ahead at math this summer.



**Adaptive
Platform**



**Interactive Visual
Simulations**



**Personalized
Attention**

For Grades 1 - 10



LIVE online classes
by trained and
certified experts.

Get the Cuemath advantage

Book a FREE trial class

Division Worksheet-4

- 1) Find the quotient by long division: $94627 \div 29$
- 2) Find the smallest 5 digit number divisible by 23.
- 3) Calculate the remainder after long division and verify your answer.
 $4462 \div 16$
- 4) A rope of length 4213 m is to cut into small pieces of length 27 m per piece. Find out the total number of pieces of ropes that are equal.
- 5) 22,352 lbs of rice has been packed in 88 bags. What is the quantity of rice in each bag?



- 6) What is the value of the whole number 'n' such that on dividing $500+n$, the answer obtained is not a whole number?
 - a) 1
 - b) 2
 - c) 3
 - d) 4
- 7) Find the value of $72 \div \frac{8}{9}$
- 8) Filicia was making garlands by using 108 beads per garland. If there are 34244 beads. Find out the total number of garlands she will make if 136 beads were found defective.
- 9) Fill in the blank

$$2,972 \div \dots\dots = 172$$

10) A school is planning an excursion with about 225 students. Each bus can accommodate 45 students. Find the number of busses required to take all the students.



**When you learn math
in an interesting way,
you never forget.**



25 Million

Math classes &
counting

100K+

Students learning
Math the right way

20+ Countries

Present across USA, UK,
Singapore, India, UAE & more.

Why choose Cuemath?

"Cuemath is a valuable addition to our family. We love solving puzzle cards. My daughter is now visualizing maths and solving problems effectively!"

- Gary Schwartz

"Cuemath is great because my son has a one-on-one interaction with the teacher. The instructor has developed his confidence and I can see progress in his work. One-on-one interaction is perfect and a great bonus."

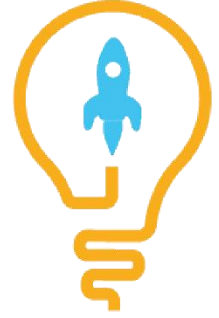
- Kirk Riley

"I appreciate the effort that miss Nitya puts in to help my daughter understand the best methods and to explain why she got a problem incorrect. She is extremely patient and generous with Miranda."

- Barbara Cabrera

Get the Cuemath advantage

Book a FREE trial class

**ANSWERS**

1)	3,263
2)	11,109
3)	14
4)	156 pieces
5)	254
6)	c) 3
7)	81
8)	315 garlands
9)	17.279
10)	5

FUN FACT

1. Multiplication and Division are inverse operations.
2. The oblique bar '/' used to denote division was introduced in 1845 by De Morgan, a British Mathematician.
3. A number that exactly divides a given number is a factor of that number.

