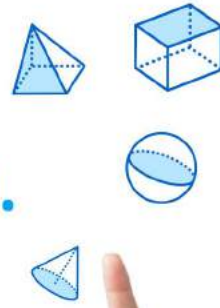


Get better at Math.
Get better at
everything.



Come experience the Cuemath methodology and ensure your child stays ahead at math this summer.



**Adaptive
Platform**



**Interactive Visual
Simulations**



**Personalized
Attention**

For Grades 1 - 10



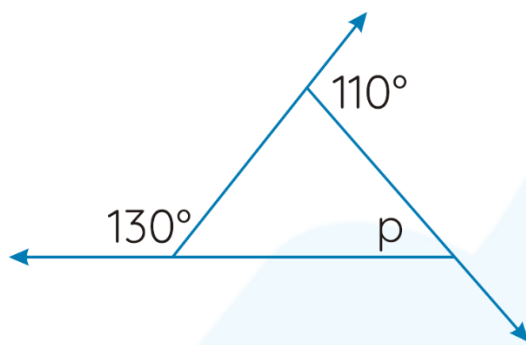
LIVE online classes
by trained and
certified experts.

Get the Cuemath advantage

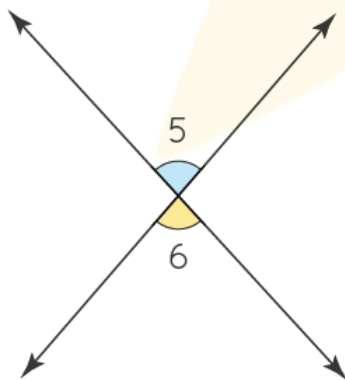
Book a FREE trial class

Angles Worksheet 4

- 1) The measure of a pair of supplementary angles is _____.
- 2) Write a pair of complementary angles such that one angle is half of the other angle.
- 3) Find the value of p in the given figure.



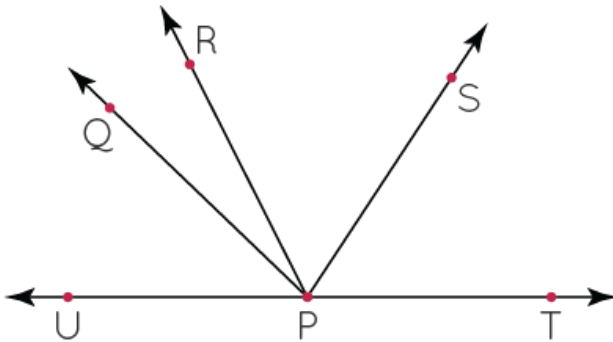
- 4) $\angle 1$ and $\angle 2$ form a linear pair. If the measure of $\angle 2$ is 60° then what is the value of $\angle 1$?
- 5) Find the missing angle 6 for the angle 5 = 83 degrees



6) Write a pair of equal angles which are:

- i) complementary
- ii) supplementary

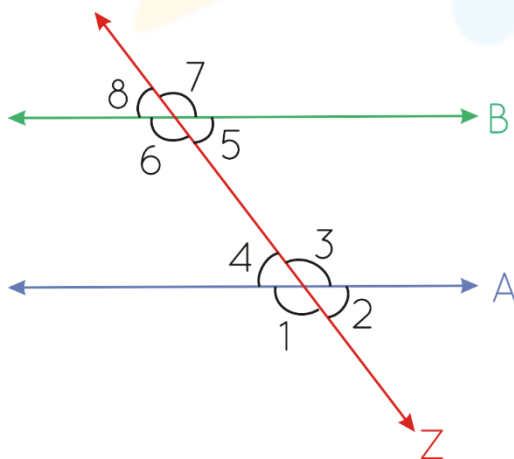
7) Name all the angles that are adjacent to $\angle SPT$.



8) Fill in the blanks.

- i) The exterior angles of a polygon always add up to _____.
- ii) The interior angles of a triangle always add up to _____.
- iii) Each internal angle of a regular quadrilateral is _____.
- iv) Sum of all the exterior angles of an irregular hexagon is _____.

9) Check whether the given lines are parallel or not if the sum of measure of angle 7 and angle 2 is 180 degrees.



- 10) State whether true or false.
- i) All right angles are equal.
 - ii) A triangle can have two right angles.
 - iii) The interior and exterior angle of a polygon across a vertex are complementary.
 - iv) Vertically opposite angles are equal.



**When you learn math
in an interesting way,
you never forget.**



25 Million

Math classes &
counting

100K+

Students learning
Math the right way

20+ Countries

Present across USA, UK,
Singapore, India, UAE & more.

Why choose Cuemath?

"Cuemath is a valuable addition to our family. We love solving puzzle cards. My daughter is now visualizing maths and solving problems effectively!"

- Gary Schwartz

"Cuemath is great because my son has a one-on-one interaction with the teacher. The instructor has developed his confidence and I can see progress in his work. One-on-one interaction is perfect and a great bonus."

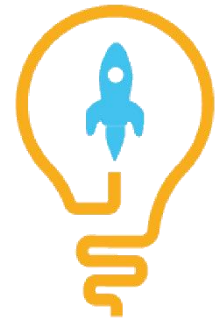
- Kirk Riley

"I appreciate the effort that miss Nitya puts in to help my daughter understand the best methods and to explain why she got a problem incorrect. She is extremely patient and generous with Miranda."

- Barbara Cabrera

Get the Cuemath advantage

Book a FREE trial class

**ANSWERS**

1) 180°	6) i) complementary: 45° and 45° ii) supplementary: 90° and 90°
2) 30° and 60°	7) $\angle SPR$, $\angle QPS$, $\angle UPS$
3) 120°	8) i) 360° ii) 180° iii) 90° iv) 360°
4) 120°	9) Line A and B are parallel because angle 7 and angle 2 are supplementary.
5) 83°	10) i) True ii) False iii) False iv) True

FUN FACT

1. Every letter in the alphabet series sets an example of angles being formed.
2. Did you know walking on a straight road forms a 180° angle?
3. When two lines do not meet each other, they never form angles.

