

Get better at Math.
Get better at
everything.



Come experience the Cuemath methodology and ensure your child stays ahead at math this summer.



**Adaptive
Platform**



**Interactive Visual
Simulations**



**Personalized
Attention**

For Grades 1 - 10



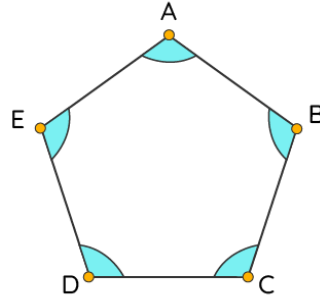
LIVE online classes
by trained and
certified experts.

Get the Cuemath advantage

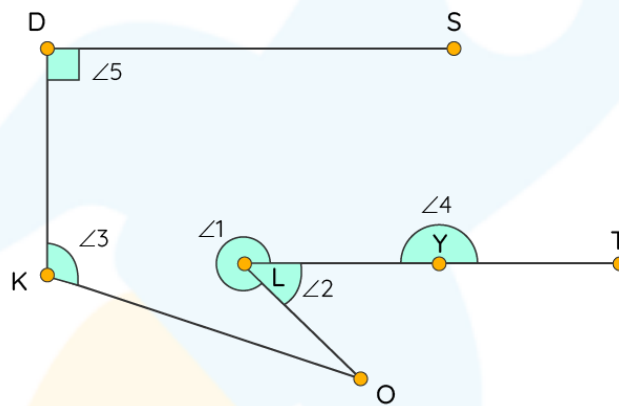
Book a FREE trial class

ACUTE RIGHT AND OBTUSE ANGLES WORKSHEET III

1) Name the types of angles seen in the following figure:



Based on the figure shown below, answer the following questions.



2) $\angle 3$ is an _____ angle.

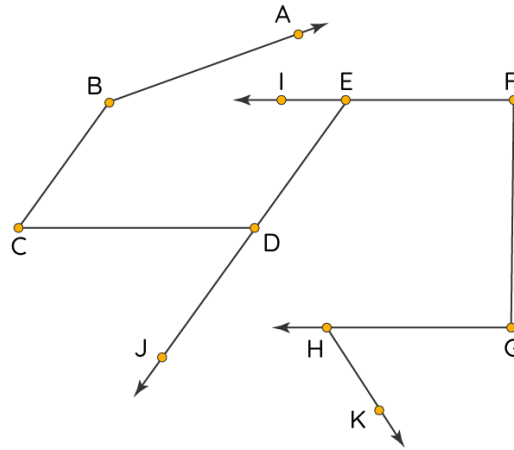
3) State whether the given statement is true or false:
 $\angle 2$ is a right angle.

4) Choose the correct option:

- a) $\angle 3 > \angle 2$
- b) $\angle 2 > \angle 3$
- c) $\angle 3 < \angle 5$
- d) None of the above.

5) Which angle is a right angle?

Answer the following questions (6-10) based on the information given in the image shown below:



6) $\angle ABC$ represents _____ angle.

7) $\angle ABC > \angle BCD$
a) True b) False

8) $\angle EFG$ is:
a) Acute angle b) Right angle c) Obtuse angle

9) Arrange the following in descending order.
 $\angle ABC$, $\angle IED$, $\angle HGF$

10) Name all the right angles in the image shown above.

**When you learn math
in an interesting way,
you never forget.**



25 Million

Math classes &
counting

100K+

Students learning
Math the right way

20+ Countries

Present across USA, UK,
Singapore, India, UAE & more.

Why choose Cuemath?

"Cuemath is a valuable addition to our family. We love solving puzzle cards. My daughter is now visualizing maths and solving problems effectively!"

- Gary Schwartz

"Cuemath is great because my son has a one-on-one interaction with the teacher. The instructor has developed his confidence and I can see progress in his work. One-on-one interaction is perfect and a great bonus."

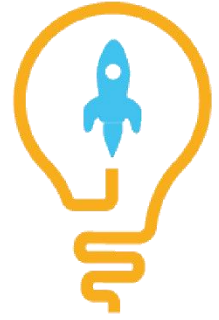
- Kirk Riley

"I appreciate the effort that miss Nitya puts in to help my daughter understand the best methods and to explain why she got a problem incorrect. She is extremely patient and generous with Miranda."

- Barbara Cabrera

Get the Cuemath advantage

Book a FREE trial class

**ANSWERS**

1)	Obtuse Angle
2)	Obtuse Angle
3)	False
4)	a)
5)	$\angle 5$
6)	Obtuse
7)	True
8)	Right Angle
9)	$\angle ABC$, $\angle HGF$, $\angle IED$
10)	$\angle HGF$, $\angle GFE$

FUN FACT

The letter 'L' forms a 90° between its standing and sleeping line.

All our body parts are aligned in such a way that there are different angles formed between our body parts.

The word complementary comes from Latin completum (meaning completed) because the right angle is thought of as a complete angle.

