

Libya | Recent floods



Rainfall accumulation (mm) over 9-11 September
Source: NASA GPM



- Collapsed dam
- Main dam
- Measured rainfall value
Source: WMO, LNMK
- Inaccessible place
Source: UN OCHA
- GDACS Red alert
- Built-up
Source: JRC-GHSL
- River/stream (wadi)
- Main road
- District limit

EU response
As of 13 September, 18:00 UTC

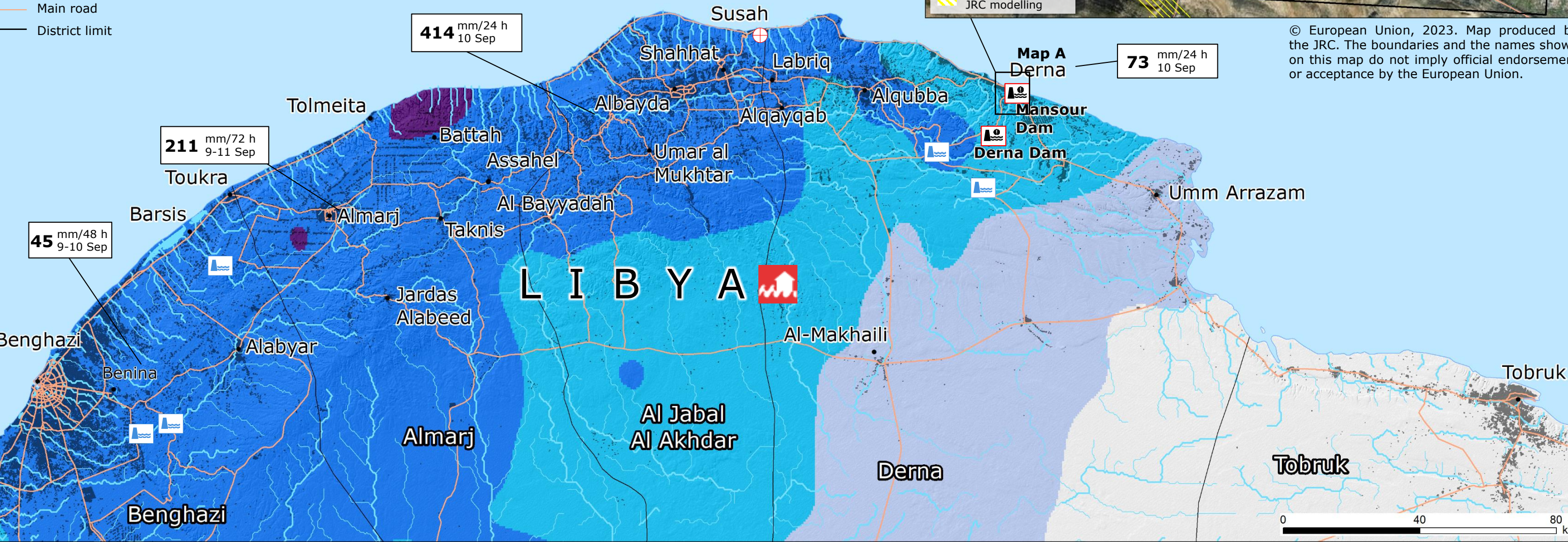
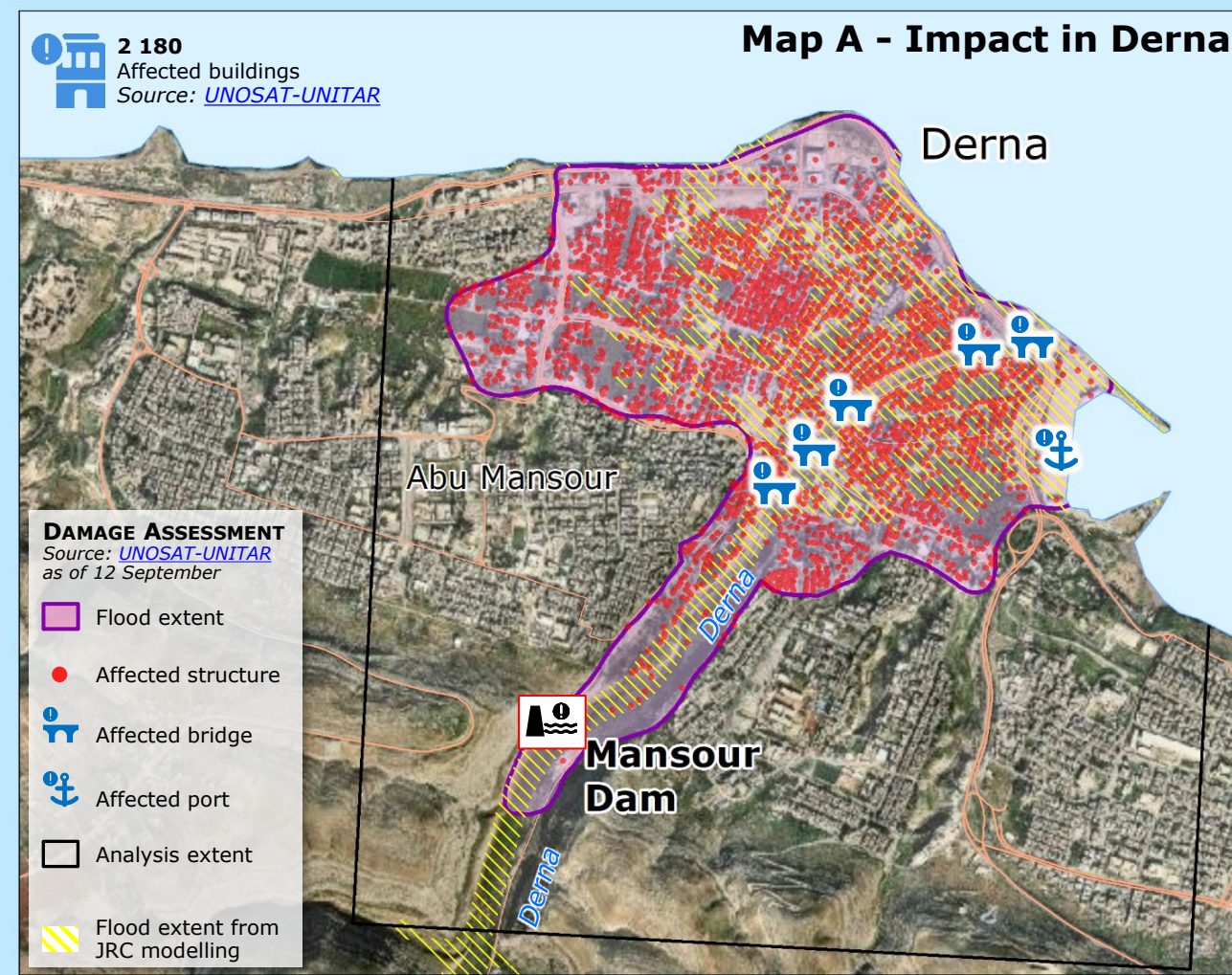
Libya requested assistance in the evening of 12 September. So far EUR 500 000 in emergency funding was allocated and 5 EU member states (DE, FI, FR, IT, NL, RO) offered:

80 generators	4 truck/machine	10 Hydro pumps
> 4 500 Food/water items	> 23 000 Shelter items	2 Helicopters
1 Emergency Medical Team (EMT2)	1 Technical Assistance Support Team (TAST)	1 Diving Team
1 500 Search and rescue items		

IMPACT OVERVIEW*
as of 13 September
Source: UN OCHA

- > 2 000** Fatalities
- ~ 5 000** Missing people
- ~ 30 000** Displaced people

*Emergency interventions are on-going and numbers are likely to increase



© European Union, 2023. Map produced by the JRC. The boundaries and the names shown on this map do not imply official endorsement or acceptance by the European Union.