

# Fiji, Tonga | Tropical Cyclone GITA

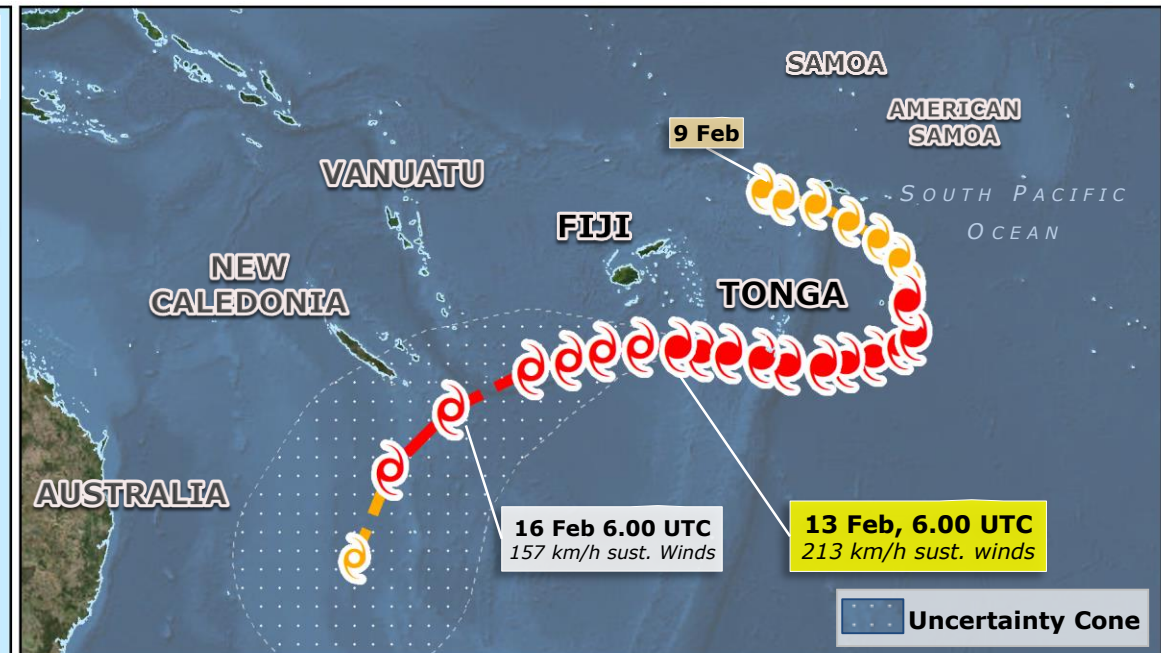
**SITUATION OVERVIEW**  
13 FEB MORNING

- 4 000 people evacuated in 48 evacuation centers
- > 1000 houses damaged
- 33 people injured (Media)

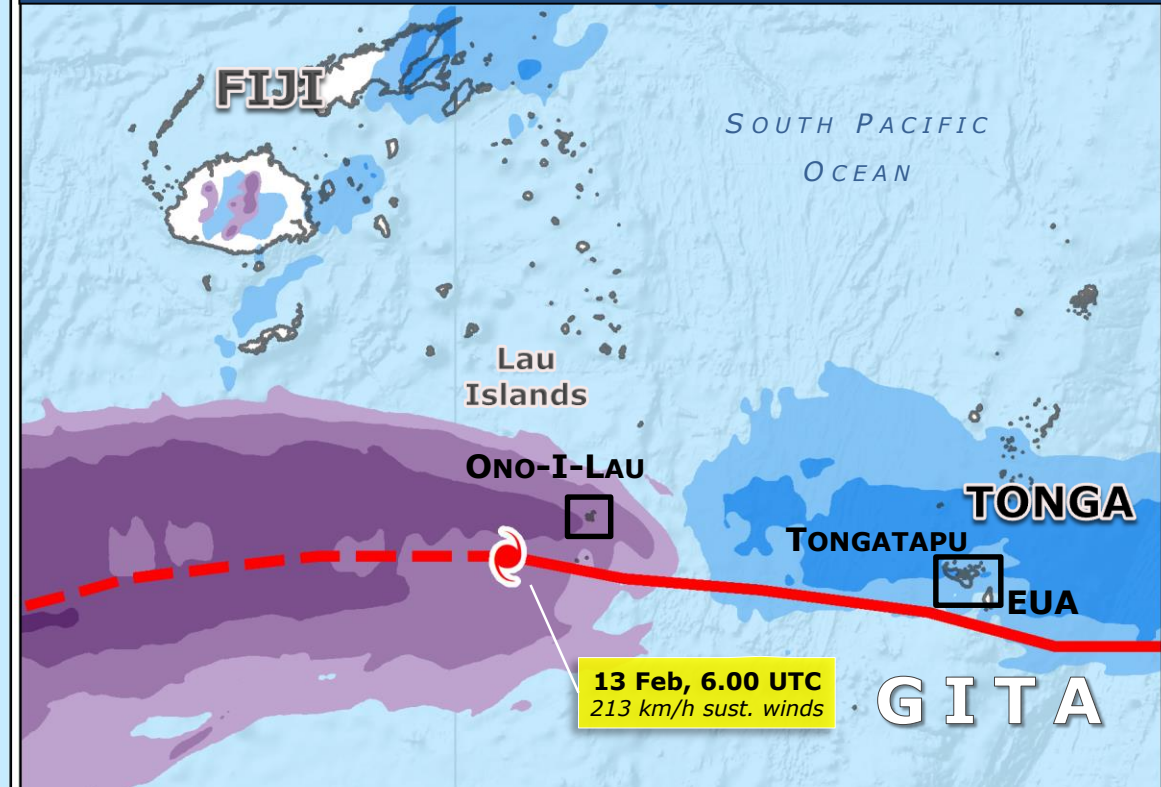


## TONGA

(Pop. 100 651)



### RAINFALL ACCUMULATION (PAST & FORECAST)



### FIJI - PASSAGE OF TC GITA ON 13 FEBRUARY



Wind	Rainfall	Storm surge
Forecast: up to 200 km/h (Cat 3, SSHS)	230 mm (forecasted), 210 mm (measured)	< 1 m (JRC calculations)

## Tropical Cyclone GITA

**GDACS RED ALERT**



### TONGA – PASSAGE OF TC GITA ON 12 FEBRUARY

Wind	Rainfall	Storm surge
Up to 230 km/h (Cat 4, SSHS)	Up to 260 mm	1 m (measured)

**TROPICAL CYCLONE**

- Observed position
- Forecast position

**INTENSITY**

- > 118 km/h
- 63 - 118 km/h
- GDACS Red Alert Potential severe disaster

**PAST RAINFALL**  
over 6-12 Feb  
NASA-GPM

- > 500 mm
- 250-500 mm
- 100-250 mm
- 50-100 mm

**RAINFALL FORECAST**  
over 13-18 Feb  
NOAA-HWRF

- > 500 mm
- 250-500 mm
- 100-250 mm
- 50-100 mm

**Legend:**

- Copernicus EMS activation (EMSR269) covered area
- UNOSAT TC20180209TON covered area
- Health facilities
- Airport
- Port
- Houses damaged

**Totally** **Partially**

Source: GDACS, JTWC, Virtual OSOCC, NOAA, NASA, Media