

Central America, The Caribbean | Tropical Cyclone ETA



TROPICAL CYCLONE
Source: [GDACS](#), [NOAA](#)

MAX WIND SPEED
31 Oct – 10 Nov
Source: [JRC](#), [NOAA-NHC](#)

- Past track
- - - Forecast track
- (D) < 63 km/h (Tropical depression)
- 6 63-118 km/h (Tropical storm)
- 9 119-240 km/h (Cat. 1-4 hurricane)

5-DAY RAINFALL FORECAST
(Source: [NOAA-HWRF](#))

25-75 75-150 150-300 >300

STORM SURGE CALCULATION (m)
Source: [NOAA-HWRF](#)

- 0.2-1
- 1-2

5-DAY RAINFALL FORECAST
(Source: [NOAA-HWRF](#))

25-75 75-150 150-300 >300

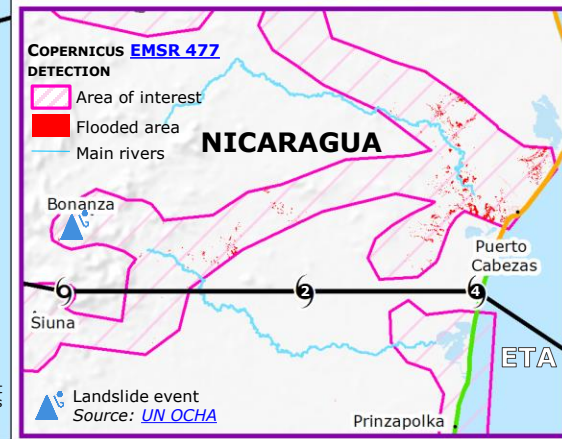
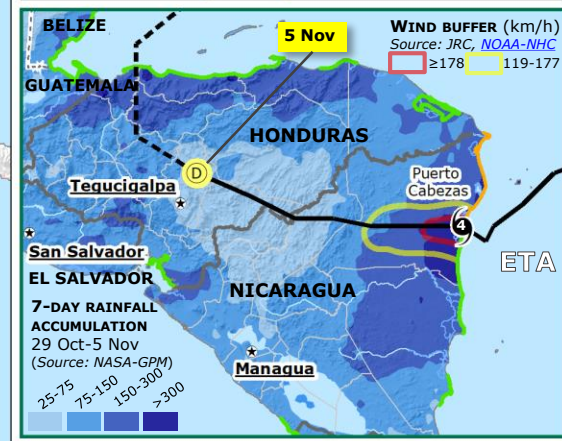
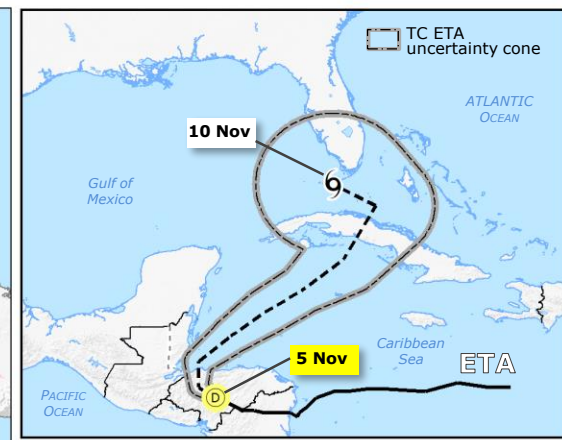
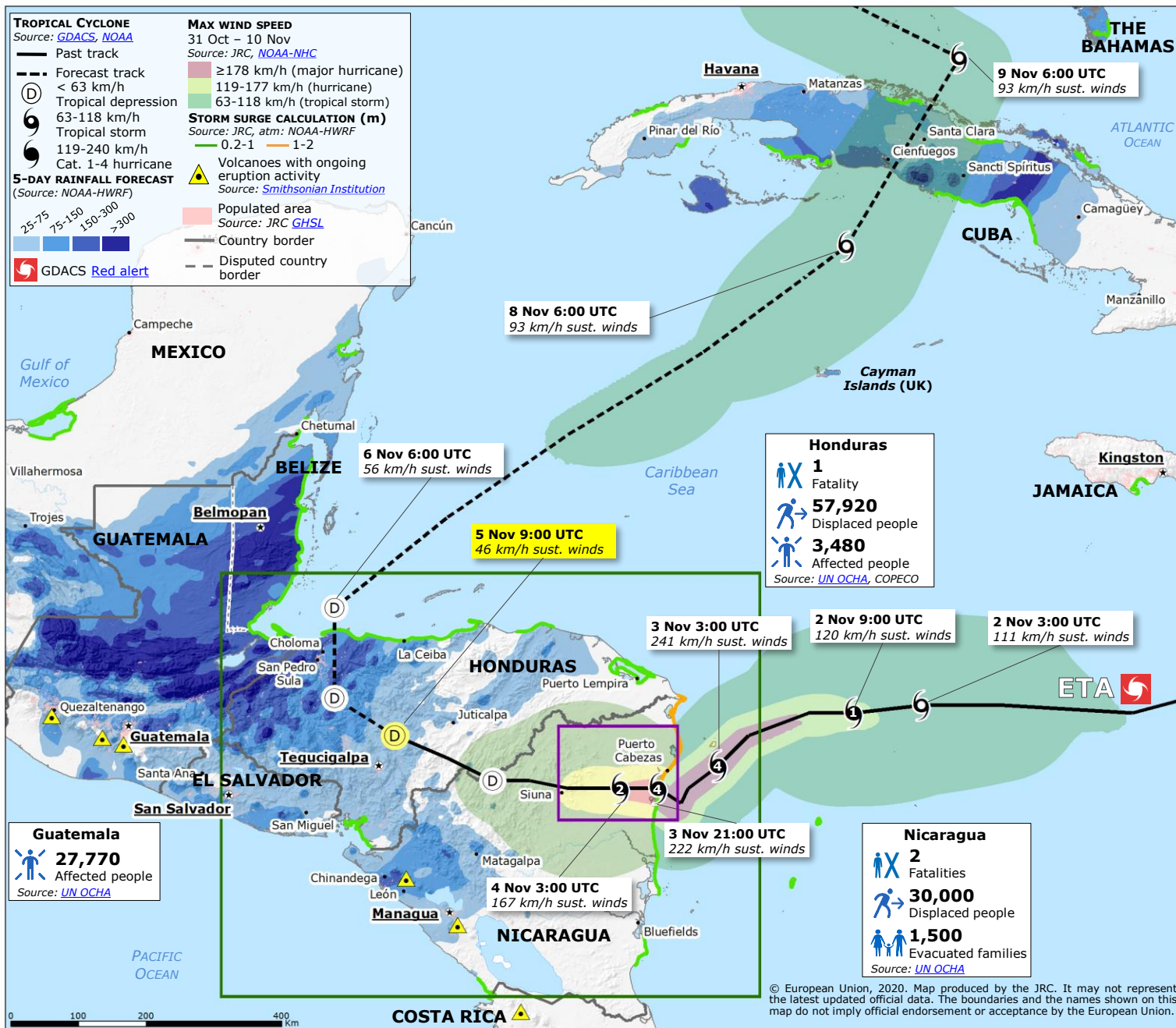
GDACS Red alert

Volcanoes with ongoing eruption activity
Source: [Smithsonian Institution](#)

Populated area
Source: [JRC](#) [GHSL](#)

Country border

Disputed country border



© European Union, 2020. Map produced by the JRC. It may not represent the latest updated official data. The boundaries and the names shown on this map do not imply official endorsement or acceptance by the European Union.