

Journal name: *AMB Express*

Manuscript Title: Characteristics and influencing factors of amyloid fibers in *S.mutans* biofilm

Dongru Chen, Yina Cao, Lixia Yu, Ye Tao, Yan Zhou, Qinghui Zhi, Huancai Lin\*

Department of Preventive dentistry , Guanghua School of Stomatology, Guangdong Provincial Key Laboratory of Stomatology, Sun Yat-sen University, Guangzhou, Guangdong, China

\*Corresponding author: Huancai Lin, email: [linhc@mail.sysu.edu.cn](mailto:linhc@mail.sysu.edu.cn); Tel: 020-83744816

Figure S1

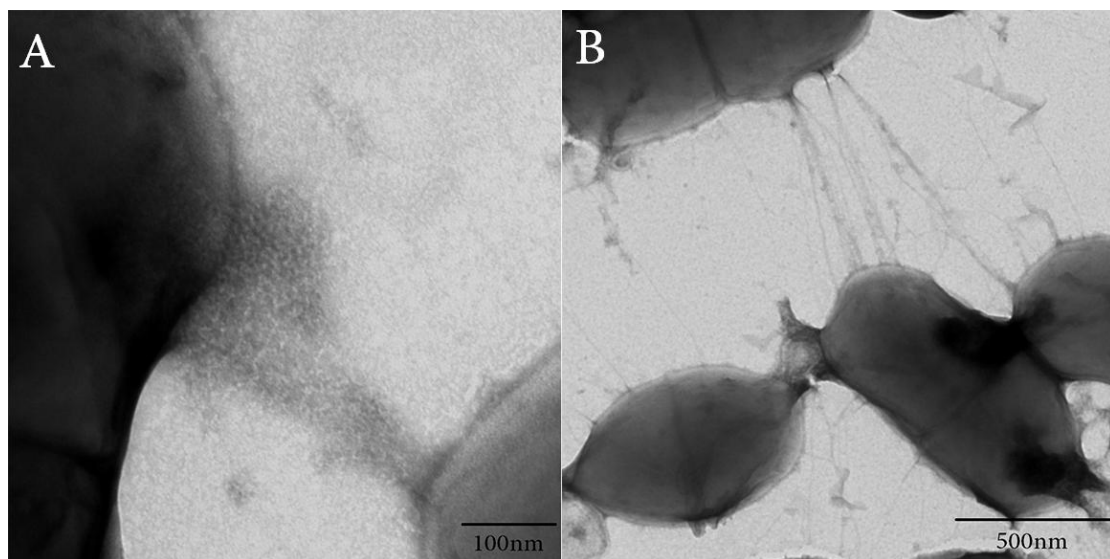
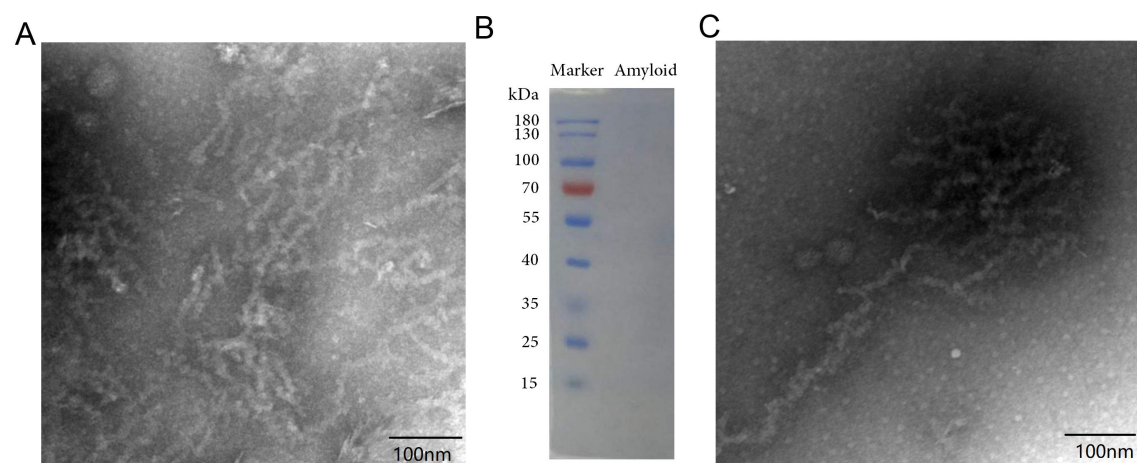


Figure S2



**Supplementary Figure legends:**

Figure S1: A: Amyloid fibers could also be observed in planktonic state, but with small amount. B: The main connection structures in planktonic *S.mutans*.

Figure S2: Characteristics of the extracted amyloid fibers. A: TEM image showed the successful isolation of amyloid fibers. B: The isolated amyloid fibers without any treatment were run by SDS-page, and no bands could be seen. C: TEM image of the extracted amyloid fibers after treated by protease K, DNase I and RNase.