

Supplementary materials

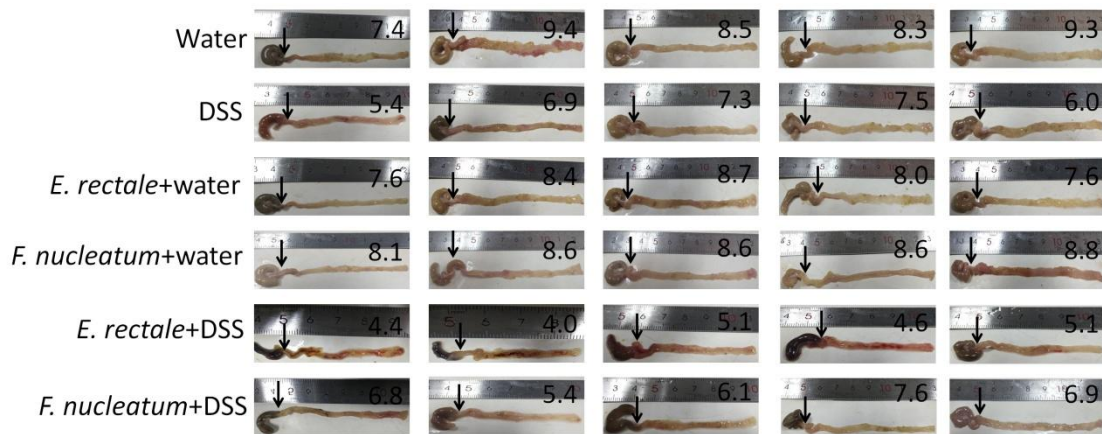


Figure S1. Gross images and measurements of mouse colons with cecums still attached. Arrows indicate the colon-cecum junction as a landmark for colon length measurement. The left column of numbers represents group numbers which were defined in section 2.5. Numbers in each small picture represents colon length (cm).

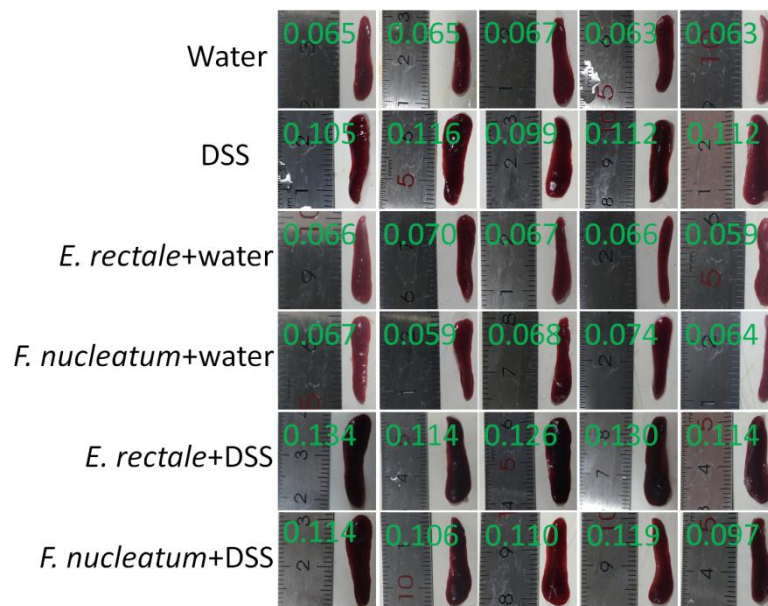


Figure S2. All gross images and measurements of mouse spleen. The left column of numbers represents group numbers which were defined in section 2.5. Numbers in each small picture represents spleen weights (g).

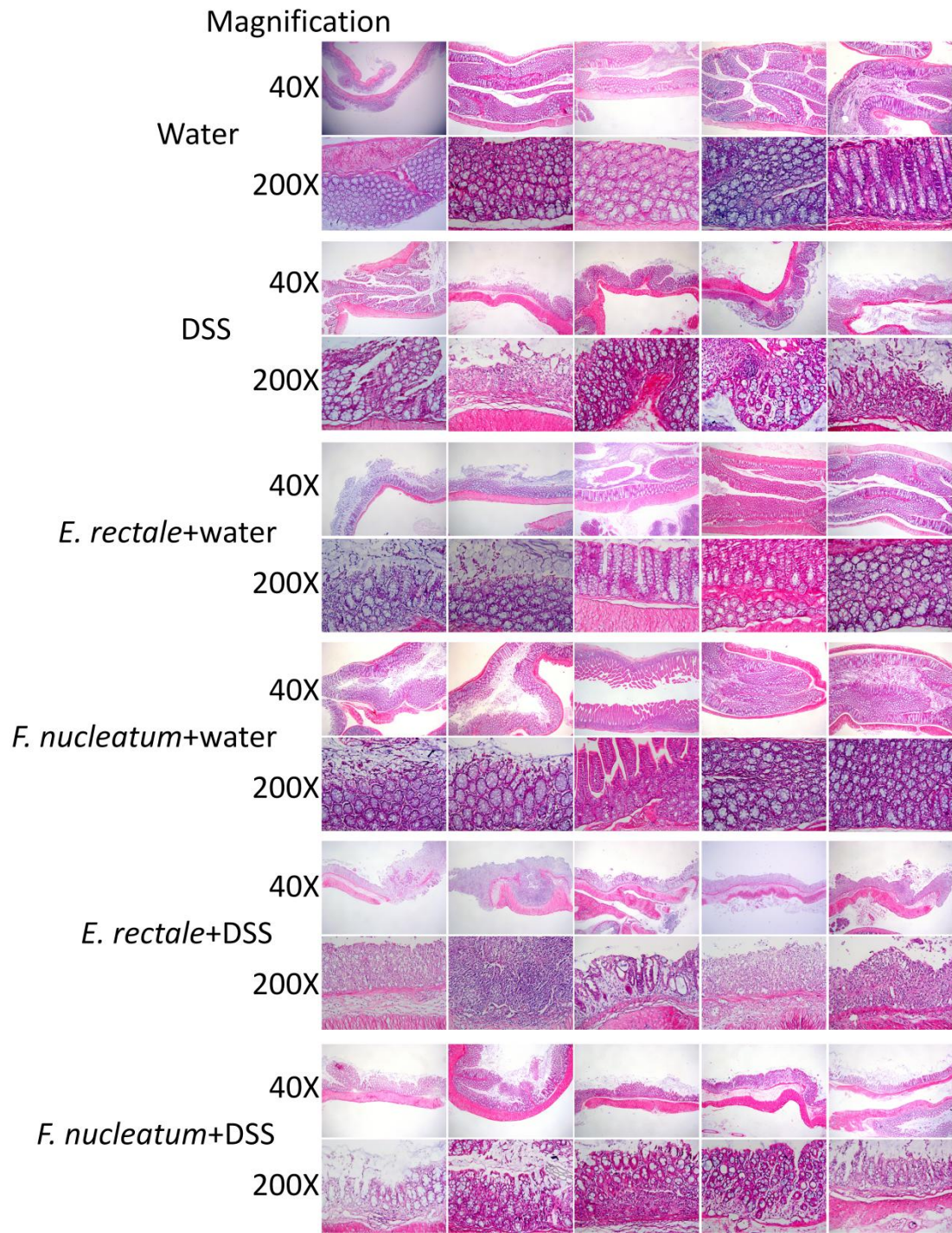


Figure S3. All H&E staining results.

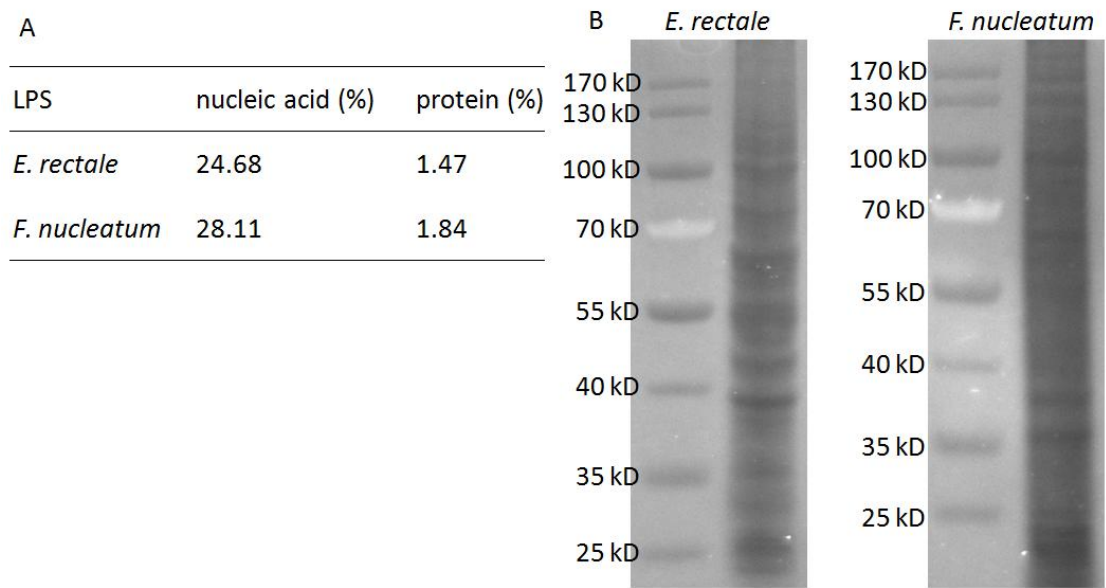


Figure S4. Measurement of phenol extraction (LPS). (A) The content of nucleic acid and protein in LPS of phenol extraction. (B) 30 μ g LPS was separated by SDS-PAGE.

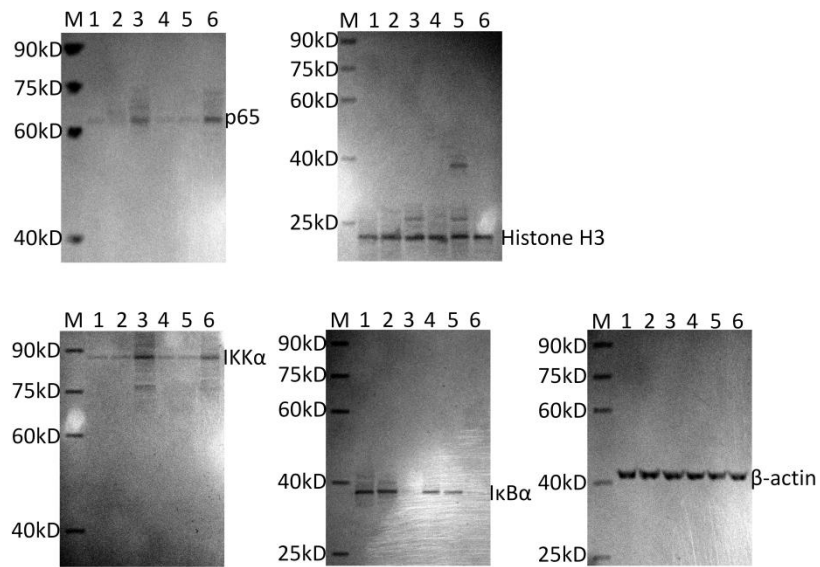


Figure S5. Full length blots of Figure 5.