

Supplementary Information

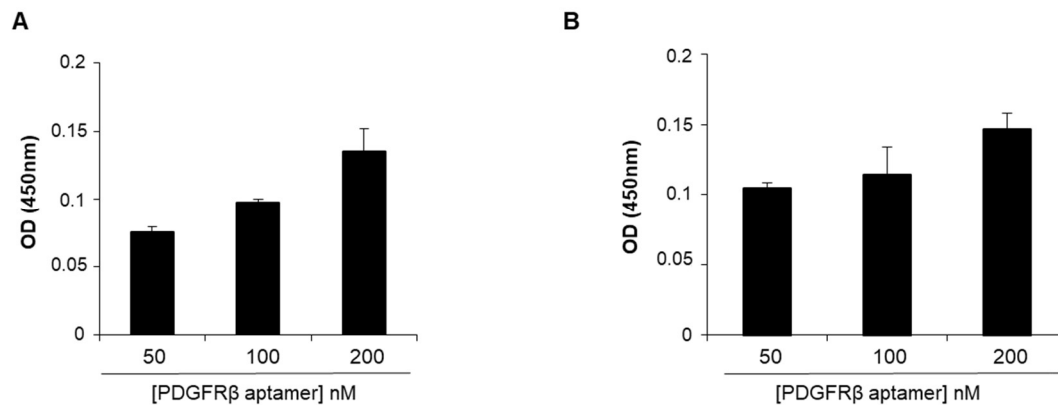


Figure S1. PDGFR β Gint4.T aptamer specifically binds to human and mouse lymphocytes. Cell-ELISA assays on activated human (A) and mouse (B) lymphocytes with 5'-biotinylated PDGFR β Gint4.T aptamer at the indicated concentrations. The background binding value for 5'-biotinylated Scr aptamer was subtracted from each data point. Data shown are mean \pm SD (n=3).

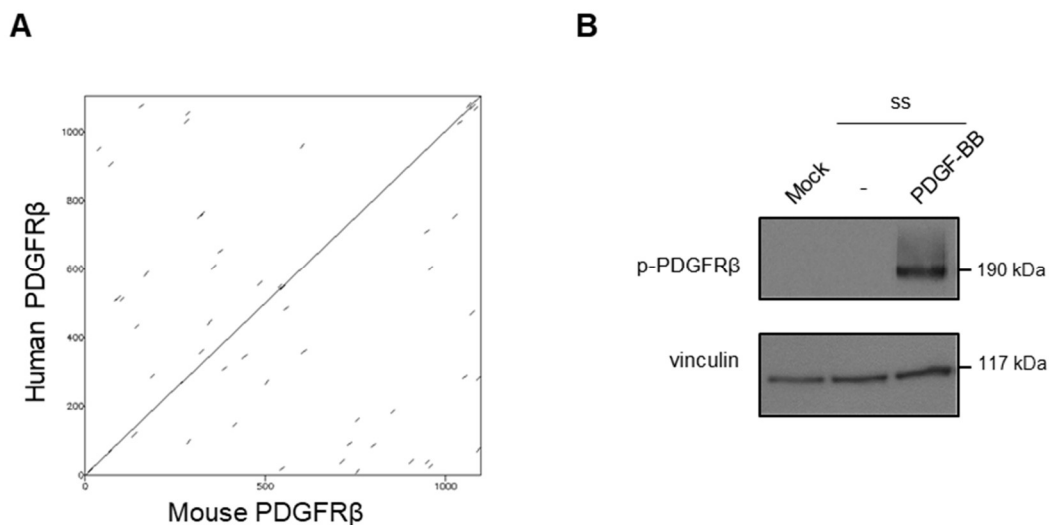


Figure S2. Similarity of human and mouse PDGFR β . (A) The dotplot matrix shows the sequence similarity between human and mouse PDGFR β protein obtained by using Dotmatcher tool (EMBOSS) with a scoring matrix Blosum 62 and a threshold line of 13. (B) NIH3T3 cells were mock-treated or serum-starved (ss) and then left untreated (-) or stimulated with PDGF-BB, as indicated. Cell lysates were immunoblotted with the indicated antibodies. Molecular weights of indicated proteins are reported.

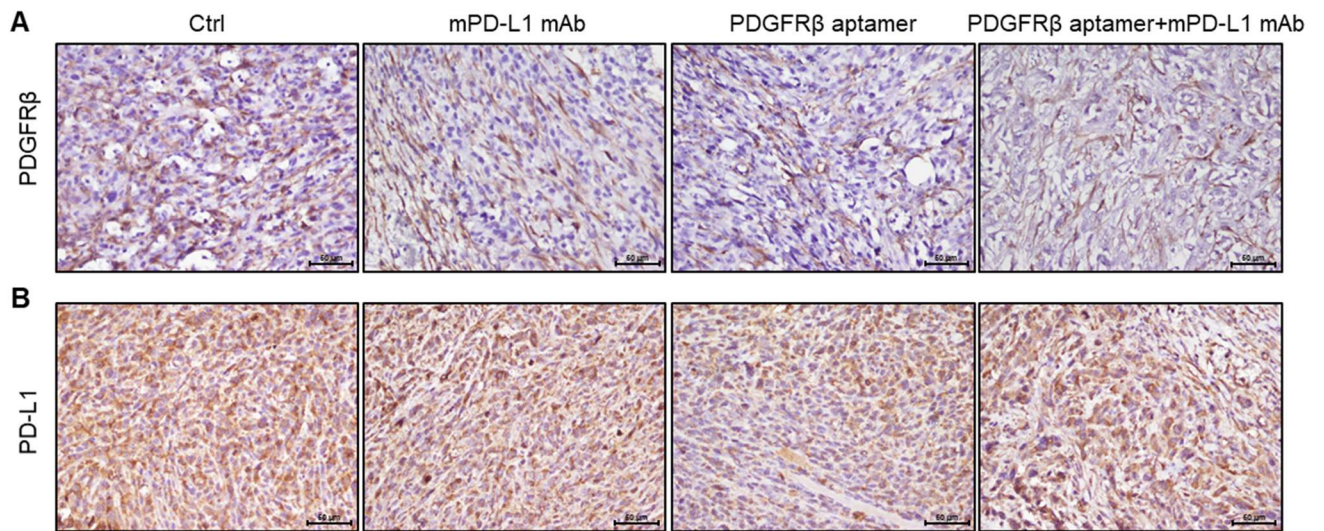


Figure S3. PDGFR β and PD-L1 immunohistochemical expression. Shown are images from one representative tumor for each treatment group immunostained with anti-PDGFR β (A) and anti-PD-L1 (B) antibodies. Magnification 40 \times , scale bar = 50 μ m.