

Additional file 8: Supplementary information about qPCR and co-localization studies

qPCR studies

Pre-designed TaqMan® Gene Expression Assays:

FN1 Hs00365058_m1

TLN1 Hs00196775_m1

HPRT1 Hs01003267_m1

Sequences of self-designed qPCR primers:

SYT1 F: TGCATAAAATTCCATTGCCACCG

 R: AAAAGCAGCAGGTCAGGACT

CLCX8 F: TCTGTGTGAAGGTGCAGTTTTG

 R: TGGGGTGGAAAGGTTTGGAGT

HPRT1 F: CCCTGGCGTCGTGATTAGT

 R: CACCCTTTCCAAATCCTCAGC

Colocalization studies

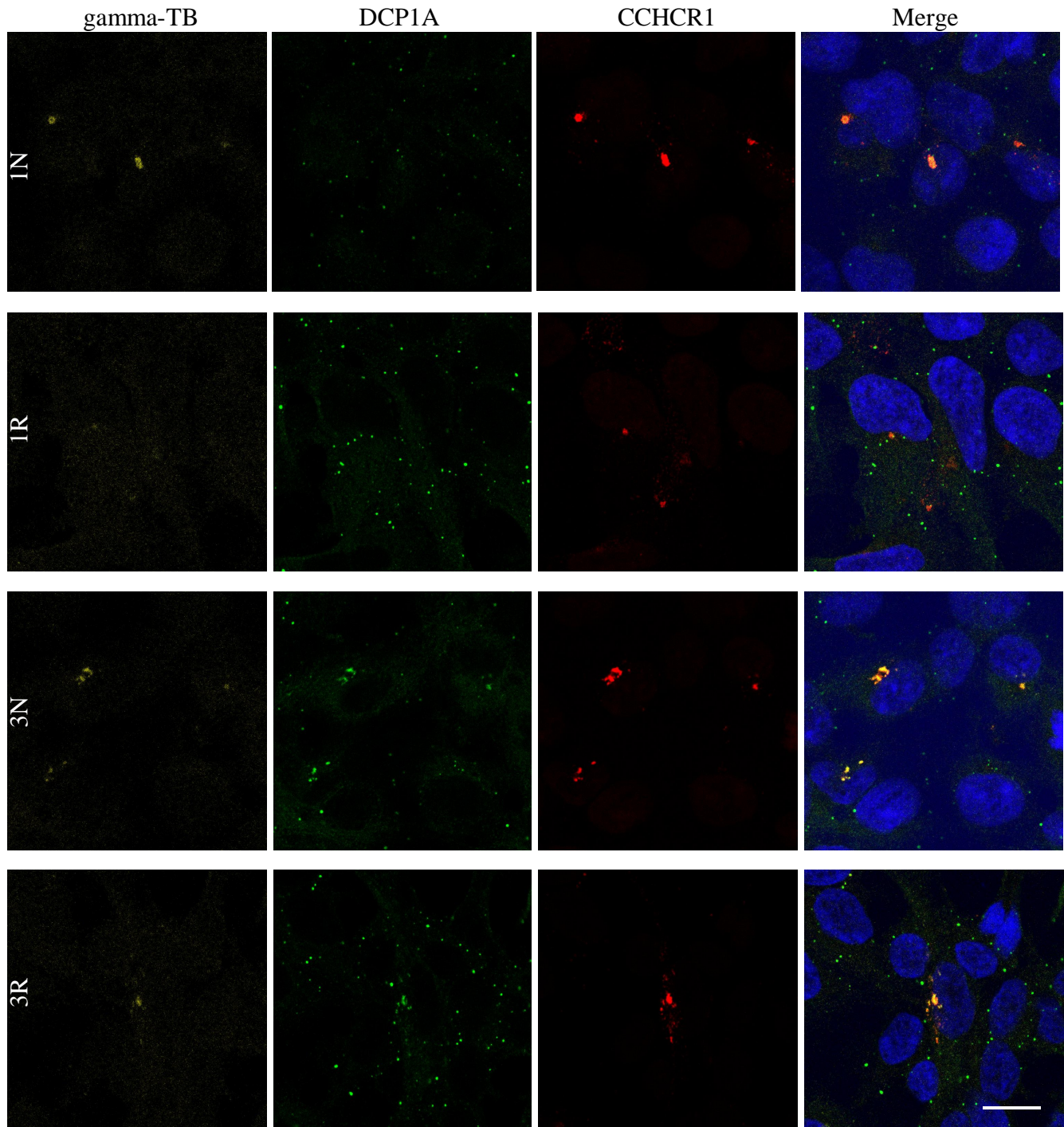


Figure S2. Colocalization of CCHCR1 with P-body and centrosome markers. Differences in localization of CCHCR1 isoforms Iso1Non-risk (1N), Iso1Risk (1R), Iso3Non-risk (3N), and Iso3Risk (3R) with centrosomal P-bodies were determined by counting colocalized (orange) staining of CCHCR1 (red) and DCP1A (green) in each CCHCR1-overexpressing cell line. Here shown the centrosome staining (gamma-tubulin, yellow). Nuclei are stained with DAPI (blue): Scale bar 10 nm.

Counting the colocalization of CCHCR1 with P-body markers in the CCHCR1 cell lines and calculation of p-values for the comparison between cell lines:

1N	1R	3N	3R		
1	0	2	2		
0	1	1	2		
0	1	2	2		
0	1	2	2		
1	0	2	2		
0	0	2	1		
0	2	2	1		
0	1	1	2		
0	0	1	1		
0	0	2	2		
0	0	2	2		
0	0	2	2		
0	0	2	2		
0	1	2	2		
0	0	2	1		
0	0	2	2		
0	0	2	1		
0	0	1	2		
	0.1			1N vs 1R	p-value
		2.8E-13	3.5E-12	1N vs 3N and 3R	
		4.3E-08	1.3E-07	1R vs 3N and 3R	
			0.7	3N vs 3R	
		3.9E-19		Iso1 vs Iso3	

0 = no colocalization with CCHCR1, 1 = faint, 2 = strong. Iso1Non-risk (1N), Iso1Risk (1R), Iso3Non-risk (3N), Iso3Risk (3R).