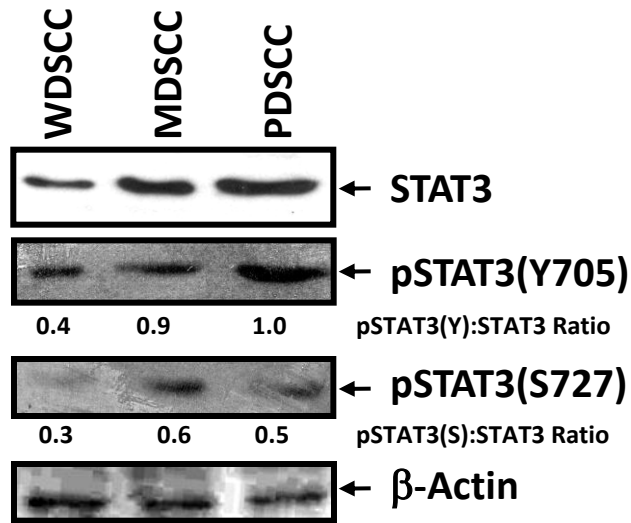
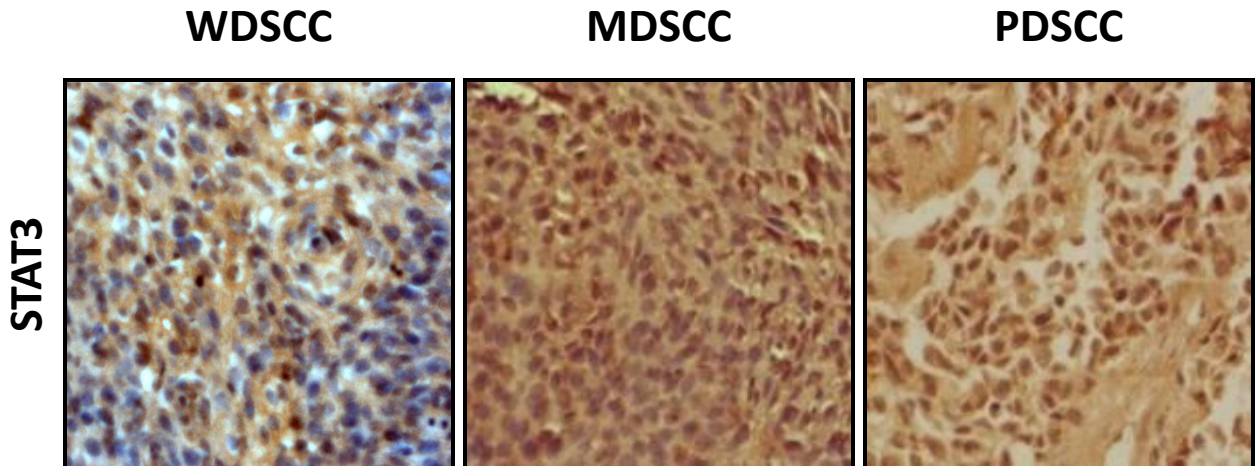


A**B****C**

	WDSCC (n = 22)	MDSCC (n = 17)	PDSCC (n = 6)
STAT3 over-expression¹	45% (10/22)	77% ^a (13/17)	100% ^{a,b} (6/6)
% Nuclear positivity² (\pm SD)	53 \pm 6	78 \pm 4 ^c	88 \pm 3 ^{c,d}