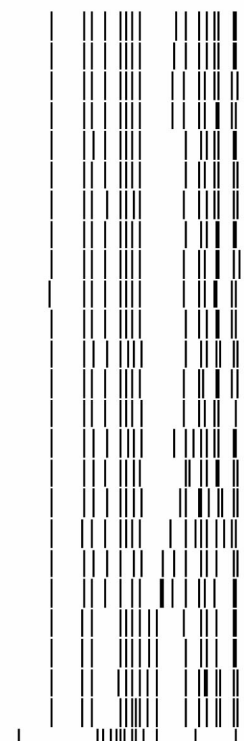
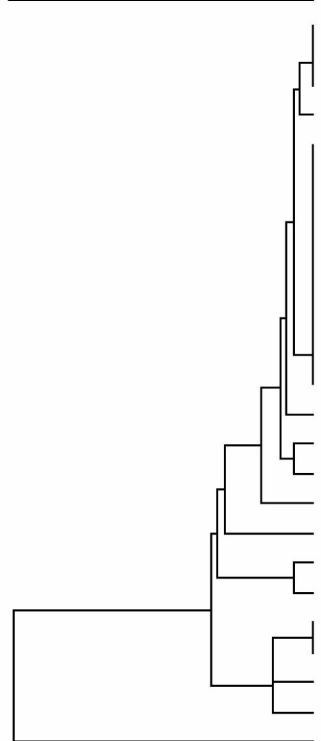


40 50 60 70 80 90 100



| Strain   | Source           | Year | PFGE        |
|----------|------------------|------|-------------|
| 02-4660  | Human-stool      | 2002 | SHEXAI.0142 |
| 03-0845  | Human-stool      | 2003 | SHEXAI.0011 |
| 04-1511  | Human-stool      | 2004 | SHEXAI.0011 |
| 05-4354  | Porcine-passive  | 2004 | SHEXAI.0011 |
| 02-2339R | Human-stool      | 2002 | SHEXAI.0001 |
| 03-7402  | Human-blood      | 2003 | SHEXAI.0001 |
| 04-3194  | Human-blood      | 2004 | SHEXAI.0001 |
| 05-4272  | Chicken-retail   | 2003 | SHEXAI.0001 |
| 05-4277  | Chicken-retail   | 2003 | SHEXAI.0001 |
| 05-4287  | Chicken-abattoir | 2003 | SHEXAI.0001 |
| 05-4294  | Chicken-retail   | 2004 | SHEXAI.0001 |
| 05-4316  | Bovine-passive   | 2004 | SHEXAI.0001 |
| 05-4355  | Porcine-passive  | 2004 | SHEXAI.0001 |
| 04-5511  | Human-stool      | 2004 | SHEXAI.0001 |
| 01-7169  | Human-stool      | 2001 | SHEXAI.0137 |
| 05-4299  | Chicken-abattoir | 2004 | SHEXAI.0002 |
| 05-4262  | Chicken-passive  | 2001 | SHEXAI.0122 |
| 05-4264  | Bovine-passive   | 2002 | SHEXAI.0155 |
| 02-0102  | Human-stool      | 2001 | SHEXAI.0006 |
| 02-5785  | Human-stool      | 2002 | SHEXAI.0006 |
| 05-4263  | Chicken-passive  | 2001 | SENXAI.0015 |
| 05-4269  | Turkey-passive   | 2003 | SENXAI.0015 |
| 03-4690  | Human-stool      | 2003 | SHEXAI.0116 |
| 05-4275  | Chicken-retail   | 2003 | SHEXAI.0116 |
| 05-4260  | Bovine-passive   | 2001 | SHEXAI.0150 |