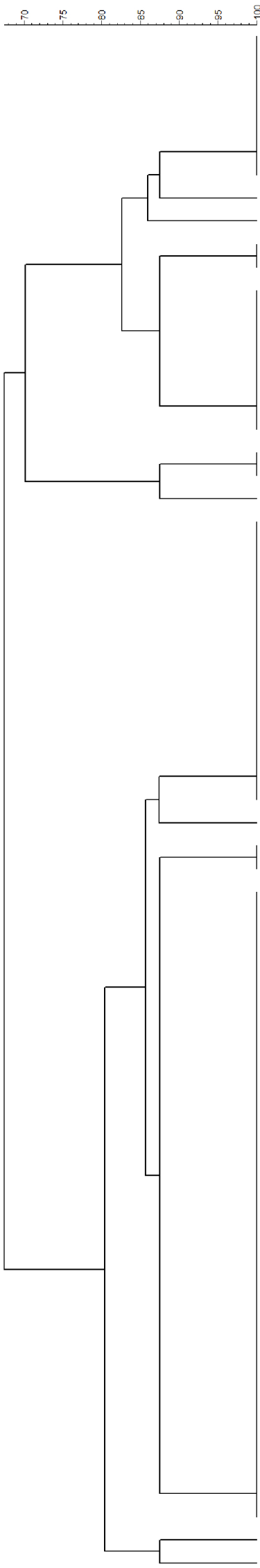


MLVA *M. avium*

Isolate no.

Sample



292	X3	25	47	3	7	10	32	Isolate no.	Sample
2	5	3	2	1	1	2	8	2012-01-8358-20A	Peat
2	5	3	2	1	1	2	8	2013-01-1168-14	Jejunal lymph node
2	5	3	2	1	1	2	8	2013-01-1390-13A	Mandibular lymph node
2	5	3	2	1	1	2	8	2013-01-1659-17	Mandibular lymph node
2	5	3	2	1	1	2	8	2013-01-1659-21	Mandibular lymph node
2	5	3	2	1	1	2	8	2013-01-1659-8	Mandibular lymph node
2	5	3	2	1	1	2	8	2013-01-1660-23	Jejunal lymph node
2	5	2	2	1	1	2	8	2013-01-1167-4	Mandibular lymph node
2	5	3	2	1	1	1	8	2013-01-1029-2B	Mandibular lymph node
0	5	2	2	1	1	2	8	2012-01-8358-4B	Peat
0	5	2	2	1	1	2	8	2013-01-1034-9	Jejunal lymph node
0	5	3	2	1	1	2	8	2012-01-7266-142	Faeces 8 weeks
0	5	3	2	1	1	2	8	2012-01-8358-17A	Peat
0	5	3	2	1	1	2	8	2013-01-1029-11A	Mandibular lymph node
0	5	3	2	1	1	2	8	2013-01-1167-25A	Mandibular lymph node
0	5	3	2	1	1	2	8	2013-01-1168-21	Jejunal lymph node
0	5	3	2	1	1	2	8	2013-01-1168-36	Jejunal lymph node
0	5	3	2	1	1	2	8	2013-01-1659-14	Mandibular lymph node
0	4	3	3	1	1	2	8	2012-01-8358-18A	Peat
0	4	3	3	1	1	2	8	2013-01-1029-26A	Mandibular lymph node
0	4	3	2	1	1	2	8	2012-01-8358-15A	Peat
2	4	2	2	1	1	2	8	2012-01-7266-17A	Faeces 8 weeks
2	4	2	2	1	1	2	8	2012-01-7266-73	Faeces 8 weeks
2	4	2	2	1	1	2	8	2013-01-1029-36	Mandibular lymph node
2	4	2	2	1	1	2	8	2013-01-1034-26	Jejunal lymph node
2	4	2	2	1	1	2	8	2013-01-1034-32	Jejunal lymph node
2	4	2	2	1	1	2	8	2013-01-1167-17A	Mandibular lymph node
2	4	2	2	1	1	2	8	2013-01-1168-28	Jejunal lymph node
2	4	2	2	1	1	2	8	2013-01-1168-4	Jejunal lymph node
2	4	2	2	1	1	2	8	2013-01-1390-2	Mandibular lymph node
2	4	2	2	1	1	2	8	2013-01-1659-11B	Mandibular lymph node
2	4	2	2	1	1	2	8	2013-01-1660-12	Jejunal lymph node
2	4	2	2	1	1	2	8	2013-01-1660-2	Jejunal lymph node
2	4	2	2	1	1	2	8	2013-01-1660-9	Jejunal lymph node
0	4	2	2	1	1	2	8	2013-01-1167-43	Mandibular lymph node
2	2	2	2	1	1	2	9	2012-01-7016-122	Faeces 6 weeks
2	2	2	2	1	1	2	9	2012-01-7266-24A	Faeces 8 weeks
2	2	2	2	1	1	2	8	2012-01-7016-121	Faeces 6 weeks
2	2	2	2	1	1	2	8	2012-01-7266-2	Faeces 8 weeks
2	2	2	2	1	1	2	8	2012-01-8358-1	Peat
2	2	2	2	1	1	2	8	2012-01-8358-10A	Peat
2	2	2	2	1	1	2	8	2012-01-8358-11	Peat
2	2	2	2	1	1	2	8	2012-01-8358-12A	Peat
2	2	2	2	1	1	2	8	2012-01-8358-15B	Peat
2	2	2	2	1	1	2	8	2012-01-8358-17B	Peat
2	2	2	2	1	1	2	8	2012-01-8358-20C	Peat
2	2	2	2	1	1	2	8	2012-01-8358-8A	Peat
2	2	2	2	1	1	2	8	2013-01-1029-18	Mandibular lymph node
2	2	2	2	1	1	2	8	2013-01-1029-32A	Mandibular lymph node
2	2	2	2	1	1	2	8	2013-01-1029-8	Mandibular lymph node
2	2	2	2	1	1	2	8	2013-01-1034-21	Jejunal lymph node
2	2	2	2	1	1	2	8	2013-01-1167-13	Mandibular lymph node
2	2	2	2	1	1	2	8	2013-01-1167-34	Mandibular lymph node
2	2	2	2	1	1	2	8	2013-01-1167-38	Mandibular lymph node
2	2	2	2	1	1	2	8	2013-01-1167-8	Mandibular lymph node
2	2	2	2	1	1	2	8	2013-01-1168-39A	Jejunal lymph node
2	2	2	2	1	1	2	8	2013-01-1168-46	Jejunal lymph node
2	2	2	2	1	1	2	8	2013-01-1390-8A	Mandibular lymph node
2	2	2	2	1	1	2	8	2013-01-1391-13	Jejunal lymph node
2	2	2	2	1	1	2	8	2013-01-1391-2	Jejunal lymph node
2	2	2	2	1	1	2	8	2013-01-1391-7	Jejunal lymph node
2	2	2	2	1	1	2	8	2013-01-1659-4A	Mandibular lymph node
2	2	2	2	1	1	2	8	2013-01-1660-15A	Jejunal lymph node
2	2	2	2	1	1	2	8	2013-01-1660-20A	Jejunal lymph node
2	2	2	2	1	1	2	8	2013-01-1660-5	Jejunal lymph node
2	2	2	3	1	1	2	8	2013-01-1029-21	Mandibular lymph node
2	4	2	3	1	1	2	8	2013-01-1167-23A	Mandibular lymph node